

GET SMART

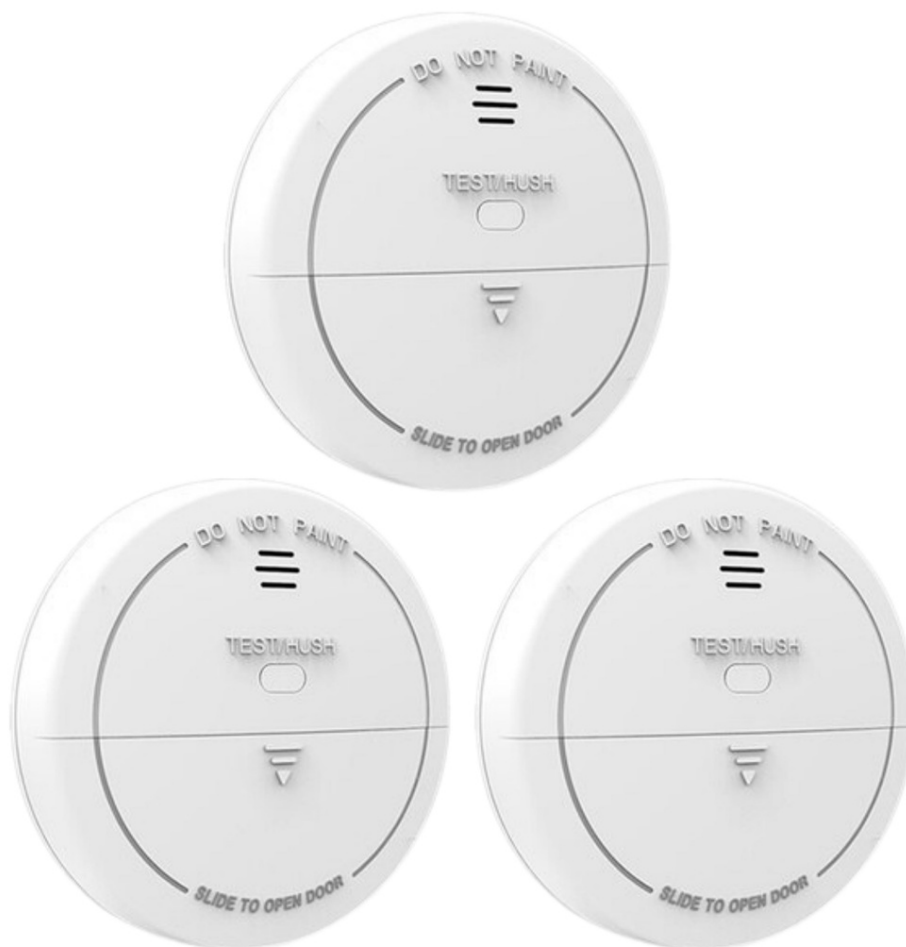
# THE C<sup>o</sup>NNECTED SHOP



## Smart Smoke Detector USER MANUAL

SLIDE TO OPEN

Welcome to the Smart Smoke Detector User Manual. Your easy, step-by-step guide to set up and connect your Smart Smoke Detector. The device is designed to be convenient and user-friendly for everyone.



# SUMMARY

---

## I. Device Set Up



1. Set-up Guide
  - a) Set-up Video

## II. Device Functions



2. Remote Functions
  - a) Activate Device

## III. Mobile App Connection



3. Registering on the Mobile App
  - a) Downloading the Mobile App
  - b) Adding Devices

## PACKAGING DETAILS

---

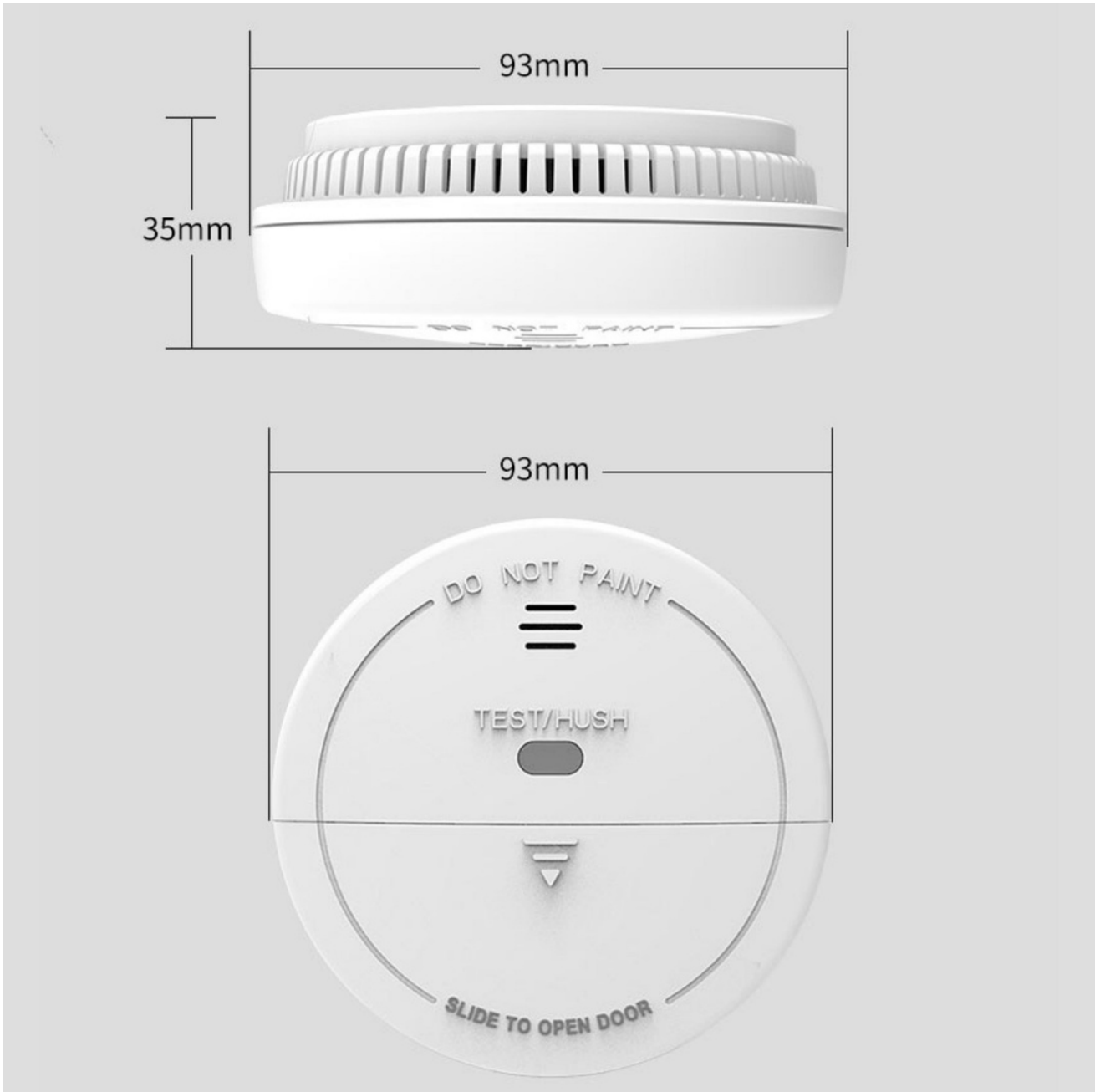


1 Smart Smoke Detector

2 Mounting Screws

## STEP-BY-STEP SET-UP GUIDE

---



## 1. SET UP



- a. Remove all items from its original box
- b. Open the battery compartment found on the device and insert two (2) AAA batteries
- c. Reset the device first prior to usage by long-pressing the button for at least 10 seconds or until a red light flashes
- d. Proceed to the following videos and steps on how to set up the device via the mobile app
- e. Make sure to test the sensor afterwards

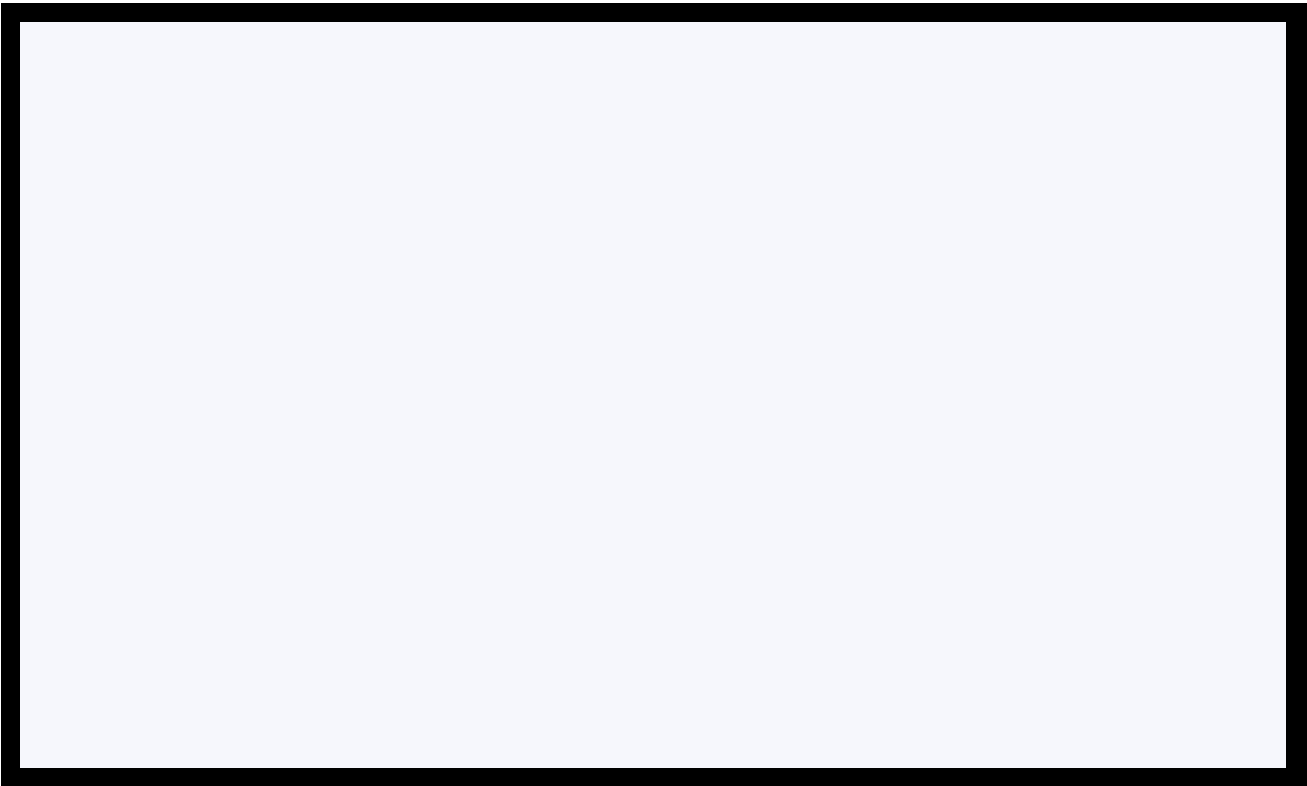


## 2. FUNCTIONS



### a) Activate Device

- The device will automatically activate or its alarm will go off once it detects smoke
- It will also notify you on your mobile phone
- To manage it, go to the mobile app and select the device
- You will be able to view historical records and manage its settings



### 3. MOBILE APP CONNECTION



#### a) Downloading the App

Download the application on the Google Play Store or Apple AppStore by searching “Tuya Smart” or by scanning the QR code below



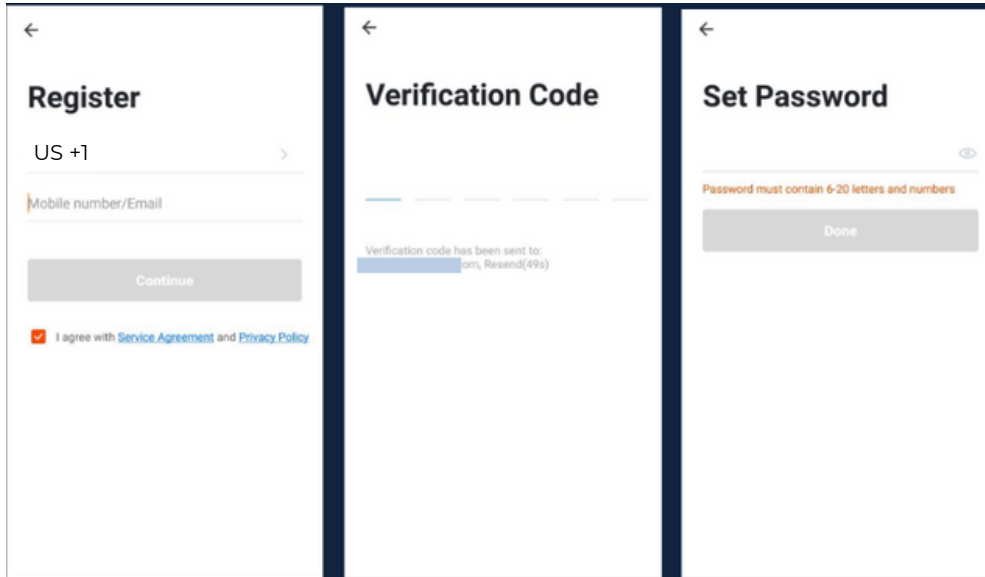
#### b) Logging in and Registering

##### After Downloading the App

- Select the country from which you will be using the device, usually the app will prompt it automatically
- You will be redirected to register via email where a verification code will be sent and proceed to enter it on the app in the allotted time limit
- Once the verification code has been entered into the app, you will be asked to set your password
- You will then have full access to the Tuya Smart Platform



### 3. MOBILE APP CONNECTION

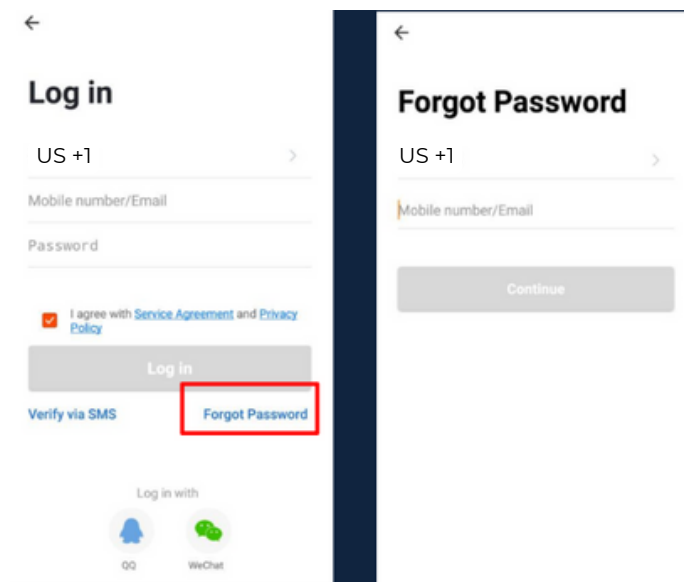


Should you be an existing user to the Tuya Smart Platform, log in using your email and password from the login page.

#### c) Resetting your Password

In case you have forgotten your password and need to reset it, please follow the steps below:

- On the Login Page, when prompted for your email & password, click “Forgot Password” button located below the “Login” button
- Select the country from which you will be using the device, usually the app will prompt it automatically




### 3. MOBILE APP CONNECTION



#### Verification Code

Verification code has been sent to: 86-15219500857,  
Resend(57s)

#### Set Password



Password must contain 6-20 letters and numbers

Done

- You will be prompted to enter the email where a verification code will be sent and proceed to enter it on the app in the allotted time limit
- Once the verification code has been entered into the app, you will be asked to set your new password
- You will then have full access to the Tuya Smart Platform

In the case that you would like to change your password from the app, please follow the steps below:

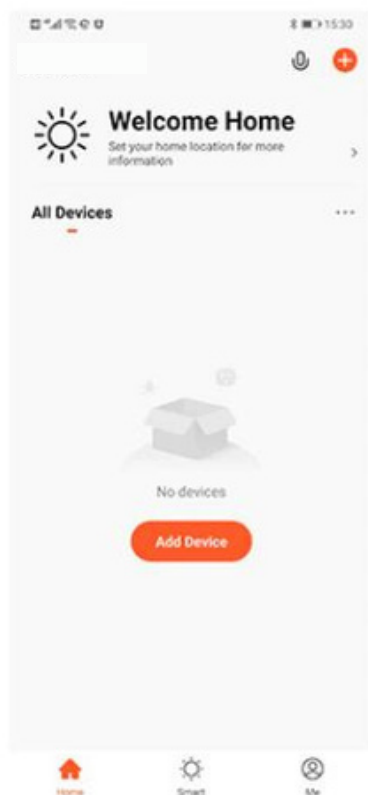
- Tap the 'Me' tab on the bottom right hand corner of your screen
- Click 'Change Login Password'
- You will be taken to the 'Account Verification' page and then tap 'Get Verification Code' button
- This will send a verification to your registered email
- Enter the code in the app
- Proceed to enter the new password

### 3. MOBILE APP CONNECTION



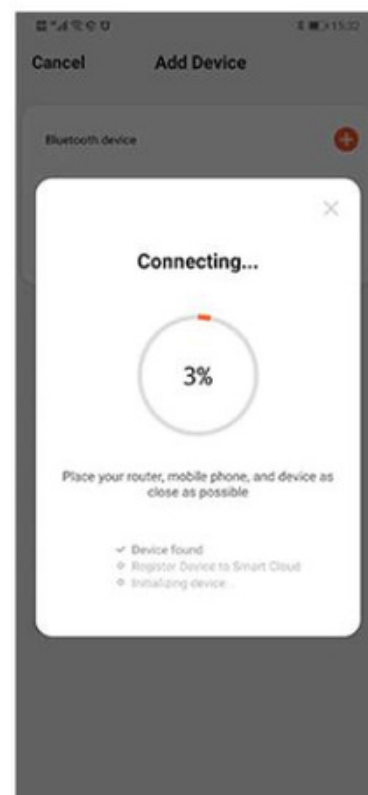
#### d) Adding Devices

To add devices on the app, please follow the instructions below. Your devices and phone must be connected to the same 2.4 GHz Wi-Fi network in order for this to work.



- To add a device, click the 'Add Device' or tap the 'Plus' button on the top-right corner of your screen and select 'Add Device'
- Enable Bluetooth and phone location to proceed
- The app will automatically detect a nearby device. Select it when it pops up on the screen

- Wait for the app to finish searching for the device
- Finish adding your device. Once this has been done successfully, you can go on to change the name of your device and control its functions



## Congratulations!

You have successfully set up your very own Smart Smoke Detector.  
Thank you for being a valued customer of The Connected Shop.

[www.theconnectedshop.com](http://www.theconnectedshop.com)





# THE CONNECTED SHOP