


ECHTHAAR PERÜCKEN · HUMAN HAIR WIGS · PERRUQUES CHEVEUX NATURELS · PELUCAS DE CABELLO NATURAL · PARRUCHE CAPELLI NATURALI

Belle Madame[®]

Natural Hair Line



by DENING HAIR 

Human Hair
Cheveux Naturels
Echthaar
Cabello Natural
Capelli Naturali

Thank you

for 56 Years

VOLLENDETE HAARE FÜR HÖCHSTE ANSPRÜCHE

PERFECT HAIR TO MEET THE HIGHEST DEMANDS

DES CHEVEUX PARFAITS A LA HAUTEUR DES EXIGENCES LES PLUS STRICTES

CABELLOS PERFECTOS PARA LAS MÁS ALTAS EXIGENCIAS

CAPELLI PERFETTI PER LE MASSIME ESIGENZE

*Liebe Kundinnen,
liebe Kunden,*

die neue BELLE MADAME
NATURAL HAIR LINE ist
Echthaar in Perfektion.

Die BELLE MADAME
NATURAL HAIR LINE
Echthaarmodelle sind von
unserer über 50-jährigen
Firmenphilosophie geprägt,
stets den höchsten
Ansprüchen in Bezug auf
Qualität und Optik gerecht
zu werden. Die Kollektion
besticht durch aparte
Frisuren und Designs
sowie durch ihre
einzigartige Farbvielfalt
und hochwertigste Haare
und Materialien.

Entdecken Sie die Welt der
BELLE MADAME NATURAL
HAIR LINE und freuen Sie
sich auf eine Kollektion der
Superlative.

*Ihr
Alexander Dening & Team*

Dear clients,

the new BELLE MADAME
NATURAL HAIR LINE is
human hair in perfection.

Our BELLE MADAME
NATURAL HAIR LINE
styles in human hair
reflect our over 50 years
old corporate philosophy
of always delivering the
highest standards in
quality and looks. This
collection features a
compelling range of
distinctive hairstyles
and designs as well as a
unique variety of colours
as well as highest quality
hair and materials.

Explore the world of
BELLE MADAME
NATURAL HAIR LINE in
anticipation of a collection
of the superlative.

*Yours
Alexander Dening & Team*

*Chères clientes,
chers clients,*

la nouvelle COLLECTION
NATURAL HAIR LINE de
BELLE MADAME représente
des cheveux naturels à la
perfection.

NATURAL HAIR LINE de
BELLE MADAME est une
gamme de modèles en
cheveux naturels qui reflète
notre philosophie d'entreprise
de plus de 50 années et vous
offre les exigences les plus
strictes en matière de qualité
et d'esthétique. La collection
séduit par le choix de coiffures
aux stylismes variés, par son
exceptionnelle diversité de
couleurs et par ses cheveux et
matériaux de haute qualité.

Découvrez le monde
NATURAL HAIR LINE de
BELLE MADAME et profitez
d'une collection digne de
tous les superlatifs.

*Alexander Dening
et son équipe*

*Estimadas clientas,
estamados clientes,*

la nueva COLECCIÓN
BELLE MADAME
NATURAL HAIR LINE es
sinónimo de un perfecto
cabello natural.

Los modelos de cabello
natural de BELLE MADAME
NATURAL HAIR LINE están
impregnados de nuestra
filosofía empresarial tras
más de 50 años haciendo
frente siempre a las máximas
expectativas con respecto
a la calidad y al aspecto. La
colección convence por sus
cortes y diseños especiales,
así como por su exclusiva
diversidad de colores y sus
cabellos y materiales de
máxima calidad.

Descubra el mundo de
BELLE MADAME NATURAL
HAIR LINE y disfrute de una
excelente colección.

Alexander Dening & Equipo

Gentili clienti,

la nuova COLLEZIONE
BELLE MADAME
NATURAL HAIR LINE e
sinonimo di capelli naturali
alla perfezione.

I modelli realizzati con capelli
naturali di BELLE MADAME
NATURAL HAIR LINE carat-
terizzano la nostra filosofia
aziendale da oltre 50 anni, e
vanno costantemente incon-
tro alle massime esigenze
in fatto di qualità ed estetica.
La collezione seduce con
favolosi tagli e acconciature
nonché con la straordinaria
varietà di colori e capelli e
materiali pregiatissimi.

Scoprite il mondo di
BELLE MADAME
NATURAL HAIR LINE e
lasciatevi conquistare da
una collezione superlativa.

*Il Vostro
Alexander Dening & team*

Belle Madame®
Natural Hair Line

by DENING HAIR

EASY-TO-WEAR STYLES 6-35

ZITA RH	6
ADRIANA RH	8
ARABELLA RH	10
ANASTASIA RH	12
MUSETTA RH	14
EVITA RH	16
REBECCA RH	18
LUCIA RH	20
GISELLE RH	22
ANASTASIA LONG RH	24
TRAVIATA RH	28
ELEKTRA RH	30

LARGE STYLES 32

ARABELLA LARGE RH	32
ANASTASIA LONG LARGE RH	33
MUSETTA LARGE RH	33

CHILDREN STYLES 34

GILDA RH	34
----------	----

MASTER STYLES 36-41

AIDA MEDIUM	36
AIDA LONG	36
TOSCA	38
TOSCA LARGE	38
DERMA-SOFT-200	40
CONNY	41

EUROPEAN HAIR LINE 42-53

VERONA	44
FERRARA	46
RAPUNZEL	50

HAIR PIECES HUMAN HAIR HAARTEILE ECHTHAAR 54-69

EXTENSIONS 70-73

KERATIN-EXTENSIONS	71
TAPE-EXTENSIONS	71
BEL-HAIR-SET	73
BEL-HAIR-WEFT	73
CLIP-HAIR	73

CARE PRODUCTS AND ACCESSORIES PFLEGEPRODUKTE UND ZUBEHÖR 74-75

OVERVIEW HAIR COLOURS ÜBERSICHT HAARFARBEN 76

INDEX 79



EASY-TO-WEAR

Styles

ZITA RH
Cherry-Root

ZITA RH

●●●●○ < 5 (52-54cm)

SUPER-FRONT

HAARLÄNGE / HAIR LENGTH 7,5-15cm

HAARDICHTE / HAIR VOLUME 115%

leicht-mittel / light-medium

BROWN COLOURS

Espresso (2),
Dark-Mocca (4),
Dark-Mocca-Mix (4/8),
Mocca-Mix (6/10-6),
Chocolate (8/12/30)

BLOND COLOURS

Caramel-Root (12/27/22H+Root10),
Honey-Toast (12/15/25-12),
Danish-Blond-Root (20R/19+Root12),
Vanilla-Mix-Root (20/12A/23A+Root10/12A),
Champagne-Root (20R/23+Root10),
Swedish-Blond-Root (23A/26+Root16)**

RED COLOURS

Terracotta-Gold (30/8/27R-8),
Cherry-Root (33/130+Root4)

360°

ZITA RH
Cherry-Root



CREATIVE STYLING

ZITA RH
Caramel-Root

** Enthält 5% hitzbeständiges Synthetikaar.
Contains 5% heat-resistant synthetic hair.

EASY-TO-WEAR *Styles*

7



ADRIANA RH
Dark-Mocca

ADRIANA RH
Dark-Mocca

Adriana

ADRIANA RH

●●●●● ◀ S (52-54 cm)
SUPER-FRONT

HAARLÄNGE / HAIR LENGTH 7,5-15 cm

HAARDICHTE / HAIR VOLUME 115%

leicht-mittel / light-medium

BROWN COLOURS

Dark-Mocca (4),

Mocca-Mix (6/10-6),

Chocolate (8/12/30)

BLOND COLOURS

Chocolate/Cream-Root (10/27/20R+Root8),

Honey-Toast (12/15/25-12),

Vanilla-Root (14/26+Root14),

Danish-Blond-Root (20R/19+Root12),

Champagne-Root (20R/23+Root10),

Swedish-Blond-Root (23A/26+Root16)**

RED COLOURS

Dark-Red-Mix (30/6/27-6),

Dark-Auburn-Mix (33/30),

Terracotta-Mix-Root (30/27+Root4)

** Enthält 5% hitzbeständiges Synthetikkaar.
Contains 5% heat-resistant synthetic hair.

EASY-TO-WEAR *Styles*

Arabella

ARABELLA RH
Danish-Blond-Root

ARABELLA RH

●●●●●● ◀ S/M (53-55cm)

SUPER-FRONT

HAARLÄNGE / HAIR LENGTH 8-20cm

HAARDICHTE / HAIR VOLUME 115%

leicht-mittel / light-medium

BROWN COLOURS

Espresso (2),
Dark-Mocca-Mix (4/8),
Mocca-Mix (6/10-6),
Chocolate-Mix (8/10/27/20),
Medium-Ash-Blond (10/12)

BLOND COLOURS

Chocolate/Cream-Root (10/27/20R+Root8),
Honey-Toast (12/15/25-12),
Danish-Blond-Root (20R/19+Root12),
Champagne-Root (20R/23+Root10),
Swedish-Blond-Root (23A/26+Root16)**

RED COLOURS

Dark-Red-Mix (30/6/27-6),
Ruby-Mix (33/32B/135/29)

GREY COLOURS

Salt & Pepper (44/51/60)*,
45-36-39*, 56/53-39*

↶ Seite 32 / Page 32

ARABELLA LARGE RH

●●●●●● ◀ L (56-58cm)

SUPER-FRONT

HAARLÄNGE / HAIR LENGTH 8-20cm

HAARDICHTE / HAIR VOLUME 115%

leicht-mittel / light-medium

BROWN COLOURS

Dark-Mocca (4),
Mocca-Mix (6/10-6),
Chocolate-Mix (8/10/27/20)

BLOND COLOURS

Chocolate/Cream-Root (10/27/20R+Root8),
Honey-Mix-Root (12A/25R/28+Root10/12),
Vanilla-Mix-Root (20/12A/23A+Root10/12A),
Swedish-Blond-Root (23A/26+Root16)**

RED COLOURS

Dark-Red-Mix (30/6/27-6)

* Weißanteil aus hitzebeständigem Synthetik.
White hair made of heat-resistant synthetic fibre.

** Enthält 5% hitzebeständiges Synthetikhaar.
Contains 5% heat-resistant synthetic hair.

ARABELLA RH
Danish-Blond-Root

Anastasia

ANASTASIA RH
Swedish-Blond-Root

ANASTASIA RH

●●●●●●●● < S (52-54cm)

SUPER-FRONT

HAARLÄNGE / HAIR LENGTH 10-17,5cm

HAARDICHTE / HAIR VOLUME 100%

leicht / light

BROWN COLOURS

Dark-Mocca (4),
Mocca-Mix (6/10-6),
Chocolate (8/12/30),
Medium-Ash-Blond (10/12)

BLOND COLOURS

Chocolate/Cream-Root (10/27/20R+Root8),
Honey-Toast (12/15/25-12),
Vanilla-Root (14/26+Root14),
Light-Blond-Mix (15/20/23+Root11),
Danish-Blond-Root (20R/19+Root12),
Champagne-Root (20R/23+Root10),
Swedish-Blond-Root (23A/26+Root16)**

RED COLOURS

Dark-Red-Mix (30/6/27-6),
Dark-Auburn-Mix (33/30),
Terracotta-Mix-Root (30/27+Root4)

ANASTASIA RH

Swedish-Blond-Root

** Enthält 5% hitzbeständiges Synthetikkaar.
Contains 5% heat-resistant synthetic hair.

MUSETTA RH
Danish-Blond-Root

CREATIVE STYLING

Musetta



MUSETTA RH
Chocolate/Cream-Root

MUSETTA RH

●●●●● < S/M (53-55 cm)

SUPER-FRONT

HAARLÄNGE / HAIR LENGTH 15-22,5 cm

HAARDICHTE / HAIR VOLUME 115%

leicht-mittel / light-medium

BROWN COLOURS

Espresso (2),
Dark-Mocca-Mix (4/8),
Mocca-Mix (6/10-6),
Chocolate-Mix (8/10/27/20),
Medium-Ash-Blond (10/12)

BLOND COLOURS

Chocolate/Cream-Root (10/27/20R+Root8),
Honey-Mix (12A/25R/28),
Light-Blond-Mix (15/20/23+Root11),
Danish-Blond-Root (20R/19+Root12),
Champagne-Root (20R/23+Root10),
Swedish-Blond-Mix (25R/22H-20+Root16),
Swedish-Blond-Root (23A/26+Root16)**

RED COLOURS

Terracotta-Gold (30/8/27R-8),
Dark-Auburn-Mix (33/30),
Ruby-Mix (33/32B/135/29)

GREY COLOURS

Salt & Pepper (44/51/60)*,
45-36-39*, 56/53-39*

Seite 33 / Page 33

MUSETTA LARGE RH

●●●●● < L/XL (57-59 cm)

SUPER-FRONT

HAARLÄNGE / HAIR LENGTH 20,5-28 cm

HAARDICHTE / HAIR VOLUME 115%

leicht-mittel / light-medium

BROWN COLOURS

Espresso (2), Dark-Mocca-Mix (4/8),
Mocca-Mix (6/10-6), Chocolate-Mix (8/10/27/20),
Medium-Ash-Blond (10/12)

BLOND COLOURS

Chocolate/Cream-Root (10/27/20R+Root8),
Honey-Mix (12A/25R/28),
Light-Blond-Mix (15/20/23+Root11),
Danish-Blond-Root (20R/19+Root12),
Champagne-Root (20R/23+Root10),
Swedish-Blond-Root (23A/26+Root16)**

RED COLOURS

Terracotta-Gold (30/8/27R-8),
Dark-Auburn-Mix (33/30),
Ruby-Mix (33/32B/135/29)

* Weißanteil aus hitzebeständigem Synthetik.
White hair made of heat-resistant synthetic fibre.

** Enthält 5% hitzbeständiges Synthetikhaar.
Contains 5% heat-resistant synthetic hair.



Evita

EVITA RH
Chocolate-Mix

EVITA RH

●●●●● M (54-56 cm)

SUPER-FRONT

HAARLÄNGE / HAIR LENGTH 22,5-30 cm

HAARDICHTE / HAIR VOLUME 115 - 130%

leicht-mittel bis mittel / light-medium to medium

BROWN COLOURS

Espresso (2),
Dark-Mocca-Mix (4/8),
Mocca-Mix (6/10-6),
Chocolate-Mix (8/10/27/20),
Medium-Ash-Blond (10/12)

BLOND COLOURS

Chocolate/Cream-Root (10/27/20R+Root8),
Chocolate/Honey-Ombre
(8/10/27/20-12A/25R/28),
Honey-Mix (12A/25R/28),
Light-Blond-Mix (15/20/23+Root11),
Danish-Blond-Root (20R/19+Root12),
Champagne-Root (20R/23+Root10),
Swedish-Blond-Mix (25R/22H-20+Root16),
Swedish-Blond-Root (23A/26+Root16)**

RED COLOURS

Terracotta-Gold (30/8/27R-8),
Dark-Auburn-Mix (33/30),
Ruby-Mix (33/32B/135/29)

GREY COLOURS

Salt & Pepper (44/51/60)*,
45-36-39*, 56/53-39*

OMBRE COLOURS

Chocolate/Honey-Ombre
(8/10/27/20-12A/25R/28)

CREATIVE STYLING

EVITA RH
Chocolate-Mix



* Weißanteil aus hitzebeständigem Synthetik.
White hair made of heat-resistant synthetic fibre.

** Enthält 5% hitzebeständiges Synthetikhaar.
Contains 5% heat-resistant synthetic hair.

Rebecca

REBECCA RH
Light-Blond-Mix

CREATIVE STYLING

REBECCA RH Light-Copper-Mix



REBECCA RH

●●●●●● M (54-56 cm)

PU-FRONT

HAARLÄNGE / HAIR LENGTH 25-35 cm

HAARDICHTE / HAIR VOLUME 115-130%

leicht-mittel bis mittel / light-medium to medium

BROWN COLOURS

- Espresso-Mix (2/4),
- Dark-Mocca-Mix (4/8),
- Mocca-Mix (6/10-6),
- Chocolate-Mix (8/10/27/20)

BLOND COLOURS

- Caramel-Root (12/27/22H+Root10),
- Honey-Mix (12A/25R/28),
- Light-Blond-Mix (15/20/23+Root11),
- Champagne-Root (20R/23+Root10),
- Swedish-Blond-Mix (25R/22H-20+Root16)

RED COLOURS

- Light-Copper-Mix (30/27)

360°

REBECCA RH
Light-Blond-Mix





LUCIA RH
Dark-Brown/Copper-Ombre

Lucia



LUCIA RH
Dark-Brown/Copper-Ombre

360°



LUCIA RH

●●●●● M (54-56 cm)
SUPER-FRONT

HAARLÄNGE / HAIR LENGTH lockig/curly 22,5-35 cm
HAARDICHTE / HAIR VOLUME 115 - 130%
leicht-mittel bis mittel / light-medium to medium

BROWN COLOURS

Espresso (2),
Dark-Mocca-Mix (4/8),
Mocca-Mix (6/10-6),
Chocolate-Mix (8/10/27/20),
Medium-Ash-Blond (10/12)

BLOND COLOURS

Chocolate/Cream-Root (10/27/20R+Root8),
Chocolate/Honey-Ombre
(8/10/27/20-12A/25R/28),
Honey-Mix (12A/25R/28),
Danish-Blond-Root (20R/19+Root12),
Champagne-Root (20R/23+Root10),
Swedish-Blond-Root (23A/26+Root16)**

RED COLOURS

Dark-Brown/Copper-Ombre (8-27R/29),
Terracotta-Gold (30/8/27R-8),
Dark-Auburn-Mix (33/30)

OMBRE COLOURS

Dark-Brown/Copper-Ombre (8-27R/29),
Chocolate/Honey-Ombre
(8/10/27/20-12A/25R/28)



LUCIA RH
Terracotta-Gold

** Enthält 5% hitzbeständiges Synthetikaar.
Contains 5% heat-resistant synthetic hair.



Giselle

GISELLE RH

●●●●○◀ S/M (53-55cm)

SUPER-FRONT

HAARLÄNGE / HAIR LENGTH 30-35cm

HAARDICHTE / HAIR VOLUME 115-130%

leicht-mittel bis mittel / light-medium to medium

BROWN COLOURS

Espresso (2),
Dark-Mocca (4),
Dark-Mocca-Mix (4/8),
Mocca-Mix (6/10-6),
Chocolate (8/12/30)

BLOND COLOURS

Caramel-Root (12/27/22H+Root10),
Chestnut/Blond-Ombre (30/31-28),
Honey-Mix (12A/25R/28),
Danish-Blond-Root (20R/19+Root12),
Vanilla-Mix-Root (20/12A/23A+Root10/12A),
Champagne-Root (20R/23+Root10),
Swedish-Blond-Root (23A/26+Root16)**

RED COLOURS

Terracotta-Gold (30/8/27R-8),
Cherry-Root (33/130+Root4)

OMBRE COLOURS

Chestnut/Blond-Ombre (30/31-28)

GISELLE RH
Honey-Mix

CREATIVE STYLING

** Enthält 5% hitzbeständiges Synthetikkaar.
Contains 5% heat-resistant synthetic hair.



360° GISELLE RH
Caramel-Root

Anastasia



ANASTASIA LONG RH
Vanilla-Mix-Root



ANASTASIA LONG RH
Chocolate

ANASTASIA LONG RH

●●●●● < 5 (52-54 cm)

SUPER-FRONT

HAARLÄNGE / HAIR LENGTH 35-40 cm

HAARDICHTE / HAIR VOLUME 100%

leicht / light

BROWN COLOURS

Espresso (2),
Dark-Mocca (4),
Mocca-Mix (6/10-6),
Chocolate (8/12/30),
Chocolate-Mix (8/10/27/20),
Medium-Ash-Blond (10/12)

BLOND COLOURS

Chocolate/Cream-Root (10/27/20R+Root8),
Chocolate/Honey-Ombre
(8/10/27/20-12A/25R/28),
Chestnut/Blond-Ombre (30/31-28),
Honey-Mix-Root (12A/25R/28+Root10/12),
Honey-Mix (12A/25R/28),
Light-Blond-Mix (15/20/23+Root11),
Danish-Blond-Root (20R/19+Root12),
Danish-Blond (19/20R),
Vanilla-Mix-Root (20/12A/23A+Root10/12A),
Champagne-Root (20R/23+Root10),
Swedish-Blond-Mix (25R/22H-20+Root16),
Swedish-Blond-Root (23A/26+Root16)**

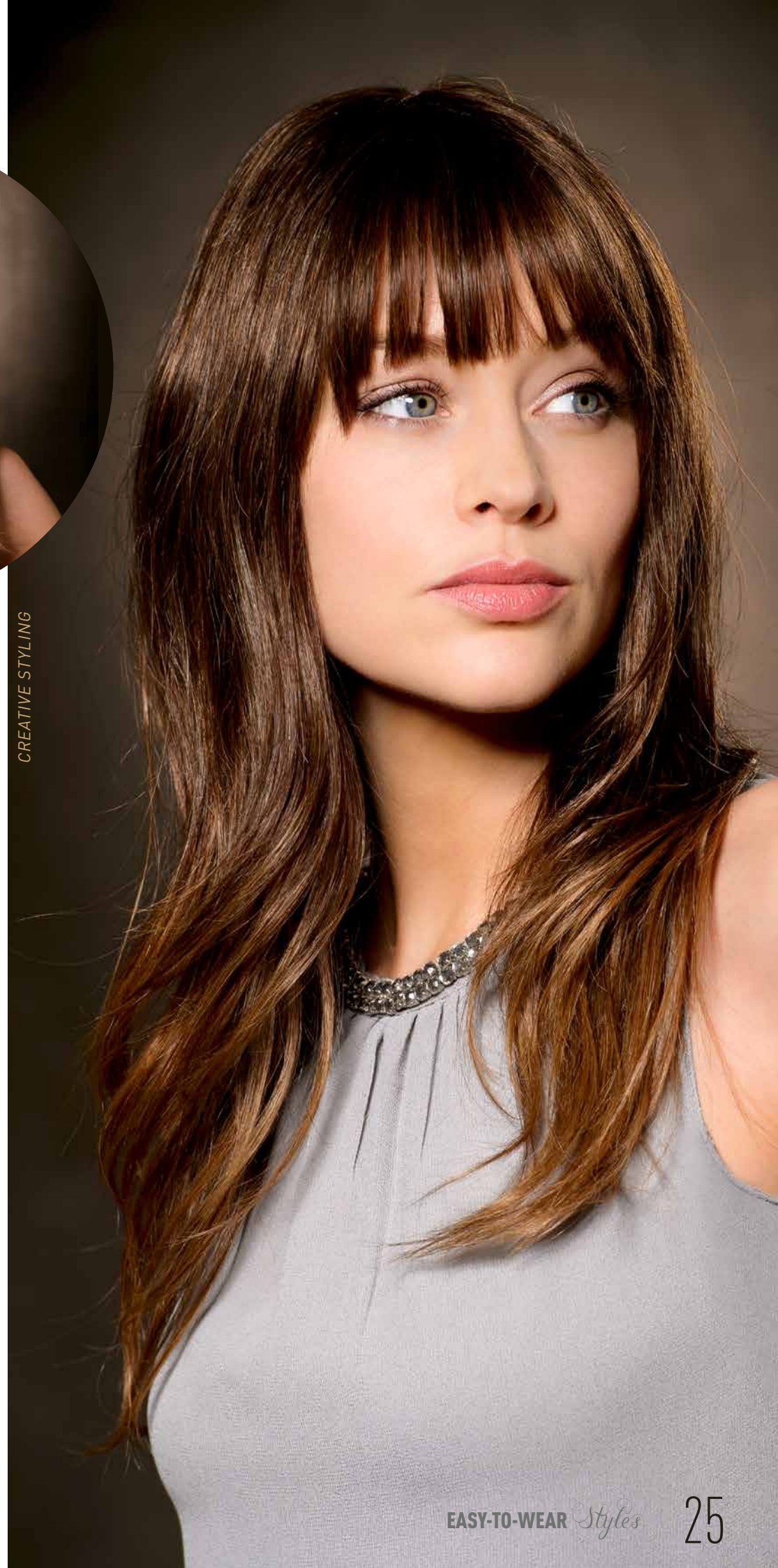
RED COLOURS

Dark-Auburn-Mix (33/30),
Terracotta-Mix-Root (30/27+Root4)

OMBRE COLOURS

Chocolate/Honey-Ombre
(8/10/27/20-12A/25R/28),
Chestnut/Blond-Ombre (30/31-28)

CREATIVE STYLING



mehr / more ANASTASIA LONG RH ➔ nächste Seite / next page

** Enthält 5% hitzbeständiges Synthetikkaar.
Contains 5% heat-resistant synthetic hair.

EASY-TO-WEAR *Styles*

Anastasia

ANASTASIA LONG RH
Chocolate/Honey-Ombre



ANASTASIA LONG RH

●●●●● < S (52-54 cm)

SUPER-FRONT

HAARLÄNGE / HAIR LENGTH 35-40 cm

HAARDICHTE / HAIR VOLUME 100%

leicht / light

BROWN COLOURS

Espresso (2), Dark-Mocca (4), Mocca-Mix (6/10-6),
Chocolate (8/12/30), Chocolate-Mix (8/10/27/20),
Medium-Ash-Blond (10/12)

BLOND COLOURS

Chocolate/Cream-Root (10/27/20R+Root8),
Chocolate/Honey-Ombre (8/10/27/20-12A/25R/28),
Chestnut/Blond-Ombre (30/31-28),
Honey-Mix-Root (12A/25R/28+Root10/12),
Honey-Mix (12A/25R/28),
Light-Blond-Mix (15/20/23+Root11),
Danish-Blond-Root (20R/19+Root12),
Danish-Blond (19/20R),
Vanilla-Mix-Root (20/12A/23A+Root10/12A),
Champagne-Root (20R/23+Root10),
Swedish-Blond-Mix (25R/22H-20+Root16),
Swedish-Blond-Root (23A/26+Root16)**

RED COLOURS

Dark-Auburn-Mix (33/30),
Terracotta-Mix-Root (30/27+Root4)

OMBRE COLOURS

Chocolate/Honey-Ombre (8/10/27/20-12A/25R/28),
Chestnut/Blond-Ombre (30/31-28)

CREATIVE STYLING

360°

ANASTASIA LONG RH
Chestnut/Blond-Ombre

mehr / more ANASTASIA LONG RH  vorherige Seite / previous page



 Seite 33 / Page 33

ANASTASIA LONG LARGE RH

●●●●● < L (56-58 cm)

SUPER-FRONT

HAARLÄNGE / HAIR LENGTH 35-40 cm

HAARDICHTE / HAIR VOLUME 115 - 130%

leicht-mittel bis mittel / light-medium to medium

BROWN COLOURS

Dark-Mocca (4),
Mocca-Mix (6/10-6),
Chocolate (8/12/30)

BLOND COLOURS

Chocolate/Cream-Root (10/27/20R+Root8),
Chocolate/Honey-Ombre (8/10/27/20-12A/25R/28),
Honey-Mix-Root (12A/25R/28+Root10/12),
Light-Blond-Mix (15/20/23+Root11),
Vanilla-Mix-Root (20/12A/23A+Root10/12A),
Swedish-Blond-Root (23A/26+Root16)**

RED COLOURS

Dark-Auburn-Mix (33/30)

OMBRE COLOURS

Chocolate/Honey-Ombre (8/10/27/20-12A/25R/28)

** Enthält 5% hitzbeständiges Synthetikaar.
Contains 5% heat-resistant synthetic hair.

EASY-TO-WEAR *Styles*

Belle Madame®

Natural Hair Line

Traviata

TRAVIATA RH
Mocca-Mix

TRAVIATA RH

●●●●● < S/M (53-55 cm)

SUPER-FRONT

MONTUR/NETZ MIT SILIKON BESCHICHTET

CAP/NET COATED WITH SILICONE

HAARLÄNGE / HAIR LENGTH 35-40 cm

HAARDICHTE / HAIR VOLUME 150%

mittel-voll / medium-full

BROWN COLOURS

Espresso (2),

Dark-Mocca (4),

Mocca-Mix (6/10-6),

Chocolate (8/12/30),

Chocolate-Mix (8/10/27/20)

BLOND COLOURS

Chocolate/Cream-Root (10/27/20R+Root8),

Chocolate/Honey-Ombre

(8/10/27/20-12A/25R/28),

Honey-Mix (12A/25R/28),

Danish-Blond-Root (20R/19+Root12),

Champagne-Root (20R/23+Root10),

Swedish-Blond-Root (23A/26+Root16)**

RED COLOURS

Terracotta-Gold (30/8/27R-8)

OMBRE COLOURS

Chocolate/Honey-Ombre

(8/10/27/20-12A/25R/28)

TRAVIATA RH
Mocca-Mix

360°

TRAVIATA RH
Mocca-Mix



** Enthält 5% hitzbeständiges Synthetikkaar.
Contains 5% heat-resistant synthetic hair.

EASY-TO-WEAR *Styles*

29



ELEKTRA RH

●●●●● < M (54-56 cm)

SUPER-FRONT

HAARLÄNGE / HAIR LENGTH 43-50 cm

HAARDICHTE / HAIR VOLUME 115-130 %

leicht-mittel bis mittel / light-medium to medium

BROWN COLOURS

Espresso (2),
Dark-Mocca-Mix (4/8),
Mocca-Mix (6/10-6),
Chocolate-Mix (8/10/27/20)

BLOND COLOURS

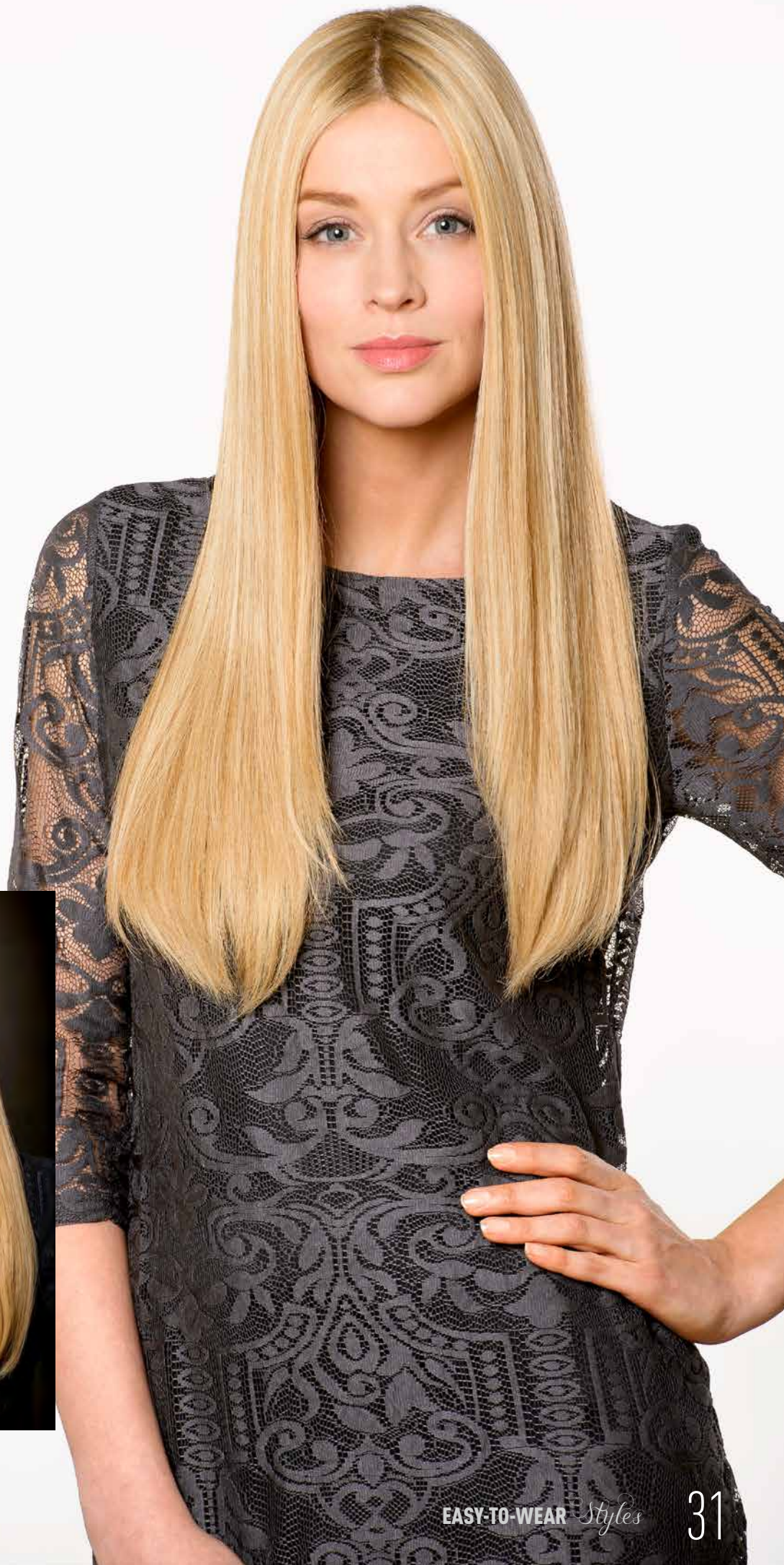
Chocolate/Cream-Root (10/27/20R+Root8),
Honey-Mix-Root (12A/25R/28+Root10/12),
Honey-Mix (12A/25R/28),
Danish-Blond-Root (20R/19+Root12),
Champagne-Root (20R/23+Root10),
Swedish-Blond-Mix (25R/22H-20+Root16),
Swedish-Blond-Root (23A/26+Root16)**

RED COLOURS

Terracotta-Gold (30/8/27R-8),
Dark-Auburn-Mix (33/30)

Elektra

ELEKTRA RH
Danish-Blond-Root



** Enthält 5% hitzbeständiges Synthetikkaar.
Contains 5% heat-resistant synthetic hair.

EASY-TO-WEAR *Styles*

Arabella

EASY-TO-WEAR
LARGE *Styles*

ARABELLA LARGE RH
Chocolate-Mix

ANASTASIA LONG LARGE RH

●●●●●● < L (56-58 cm)

SUPER-FRONT

HAARLÄNGE / HAIR LENGTH 35-40 cm

HAARDICHTE / HAIR VOLUME 115 - 130%

leicht-mittel bis mittel / light-medium to medium

BROWN COLOURS

Dark-Mocca (4), Mocca-Mix (6/10-6),
Chocolate (8/12/30)

BLOND COLOURS

Chocolate/Cream-Root (10/27/20R+Root8),
Chocolate/Honey-Ombre (8/10/27/20-12A/25R/28),
Honey-Mix-Root (12A/25R/28+Root10/12),
Light-Blond-Mix (15/20/23+Root11),
Vanilla-Mix-Root (20/12A/23A+Root10/12A),
Swedish-Blond-Root (23A/26+Root16)**

RED COLOURS

Dark-Auburn-Mix (33/30)

OMBRE COLOURS

Chocolate/Honey-Ombre (8/10/27/20-12A/25R/28)



ARABELLA LARGE RH

●●●●●● < L (56-58 cm)

SUPER-FRONT

HAARLÄNGE / HAIR LENGTH 8-20 cm

HAARDICHTE / HAIR VOLUME 115%

leicht-mittel / light-medium

BROWN COLOURS

Dark-Mocca (4),
Mocca-Mix (6/10-6),
Chocolate-Mix (8/10/27/20)

BLOND COLOURS

Chocolate/Cream-Root (10/27/20R+Root8),
Honey-Mix-Root (12A/25R/28+Root10/12),
Vanilla-Mix-Root (20/12A/23A+Root10/12A),
Swedish-Blond-Root (23A/26+Root16)**

RED COLOURS

Dark-Red-Mix (30/6/27-6)

CREATIVE STYLING

MUSETTA LARGE RH
Chocolate/Cream-Root

MUSETTA LARGE RH

●●●●●● < L/XL (57-59 cm)

SUPER-FRONT

HAARLÄNGE / HAIR LENGTH 20,5-28 cm

HAARDICHTE / HAIR VOLUME 115%

leicht-mittel / light-medium

BROWN COLOURS

Espresso (2), Dark-Mocca-Mix (4/8),
Mocca-Mix (6/10-6), Chocolate-Mix (8/10/27/20),
Medium-Ash-Blond (10/12)

BLOND COLOURS

Chocolate/Cream-Root (10/27/20R+Root8),
Honey-Mix (12A/25R/28),
Light-Blond-Mix (15/20/23+Root11),
Danish-Blond-Root (20R/19+Root12),
Champagne-Root (20R/23+Root10),
Swedish-Blond-Root (23A/26+Root16)**

RED COLOURS

Terracotta-Gold (30/8/27R-8),
Dark-Auburn-Mix (33/30),
Ruby-Mix (33/32B/135/29)



** Enthält 5% hitzbeständiges Synthetikkaar.
Contains 5% heat-resistant synthetic hair.



GILDA RH
Champagne

Gilda

GILDA RH

●●●●● < XS (49-51 cm)

SUPER-FRONT

HAARLÄNGE / HAIR LENGTH 30-35 cm

HAARDICHTE / HAIR VOLUME 100%

leicht / light

BROWN COLOURS

Dark-Mocca (4),

Mocca-Mix (6/10-6),

Chocolate-Mix (8/10/27/20),

Medium-Ash-Blond (10/12)

BLOND COLOURS

Chocolate/Cream-Root (10/27/20R+Root8),

Chocolate/Honey-Ombre

(8/10/27/20-12A/25R/28),

Honey-Mix (12A/25R/28),

Champagne-Root (20R/23+Root10),

Champagne (20R/23),

Swedish-Blond-Root (23A/26+Root16)**

RED COLOURS

Dark-Auburn-Mix (33/30)

OMBRE COLOURS

Chocolate/Honey-Ombre

(8/10/27/20-12A/25R/28)



GILDA RH
Champagne-Root



GILDA RH
Champagne

** Enthält 5% hitzbeständiges Synthetikkaar.
Contains 5% heat-resistant synthetic hair.

Belle Madame®

Natural Hair Line



AIDA MEDIUM
Chocolate/Cream-Root

AIDA LONG
8



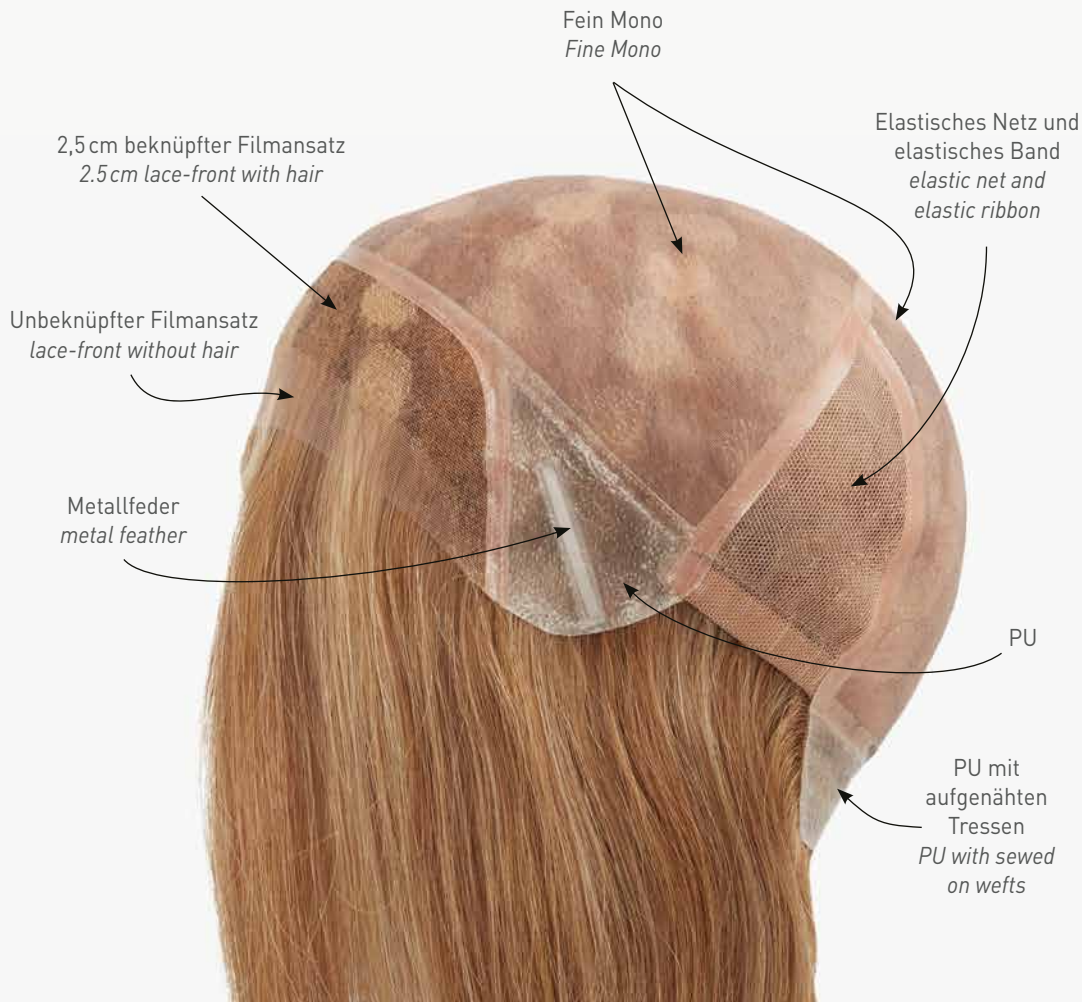
AIDA MEDIUM
Chocolate/Cream-Root



CREATIVE STYLING



AIDA MEDIUM
AIDA LONG



AIDA STYLES	AIDA MEDIUM	AIDA LONG
VERARBEITUNG / QUALITY	●●●●● ◀	●●●●● ◀
MONTUR / CAP	Voll-Mono / Full-Mono	
HAARQUALITÄT / HAIR QUALITY	Elegant Remy Hair (Indo-Special)	
GRÖSSE / SIZE	S/M (53-54 cm)	M (54-55 cm)
HAARLÄNGE / HAIR LENGTH	25-30cm	40cm
HAARDICHTE / HAIR VOLUME	100-115% leicht bis leicht-mittel light to light-medium	
BROWN COLOURS	2, 4, 6, 6/30, 8, 10	4, 6/30, 8, 10
BLOND COLOURS	Chocolate/Cream-Root (10/27/20R+Root8), 12, Honey-Mix (12A/25R/28), 14/26, 20-R, Champagne-Root (20R/23+Root10), 23A/26	Chocolate/Cream-Root (10/27/20R+Root8), 12, Honey-Mix (12A/25R/28), 14, Vanilla-Root (14/26+Root14), 14/26, 20-R, Champagne-Root (20R/23+Root10), 23A/26
RED COLOURS	6/30, 33, 33/27R, 30	6/30, 33, 30/27
	* Weißanteil aus Synthetik White hair made of synthetic fibre.	

AIDA *Styles*

BelleMadame®

Natural Hair Line



TOSCA
Honey-Toast



CREATIVE STYLING



TOSCA
Honey-Toast

TOSCA
Honey-Toast

CREATIVE STYLING



TOSCA TOSCA LARGE

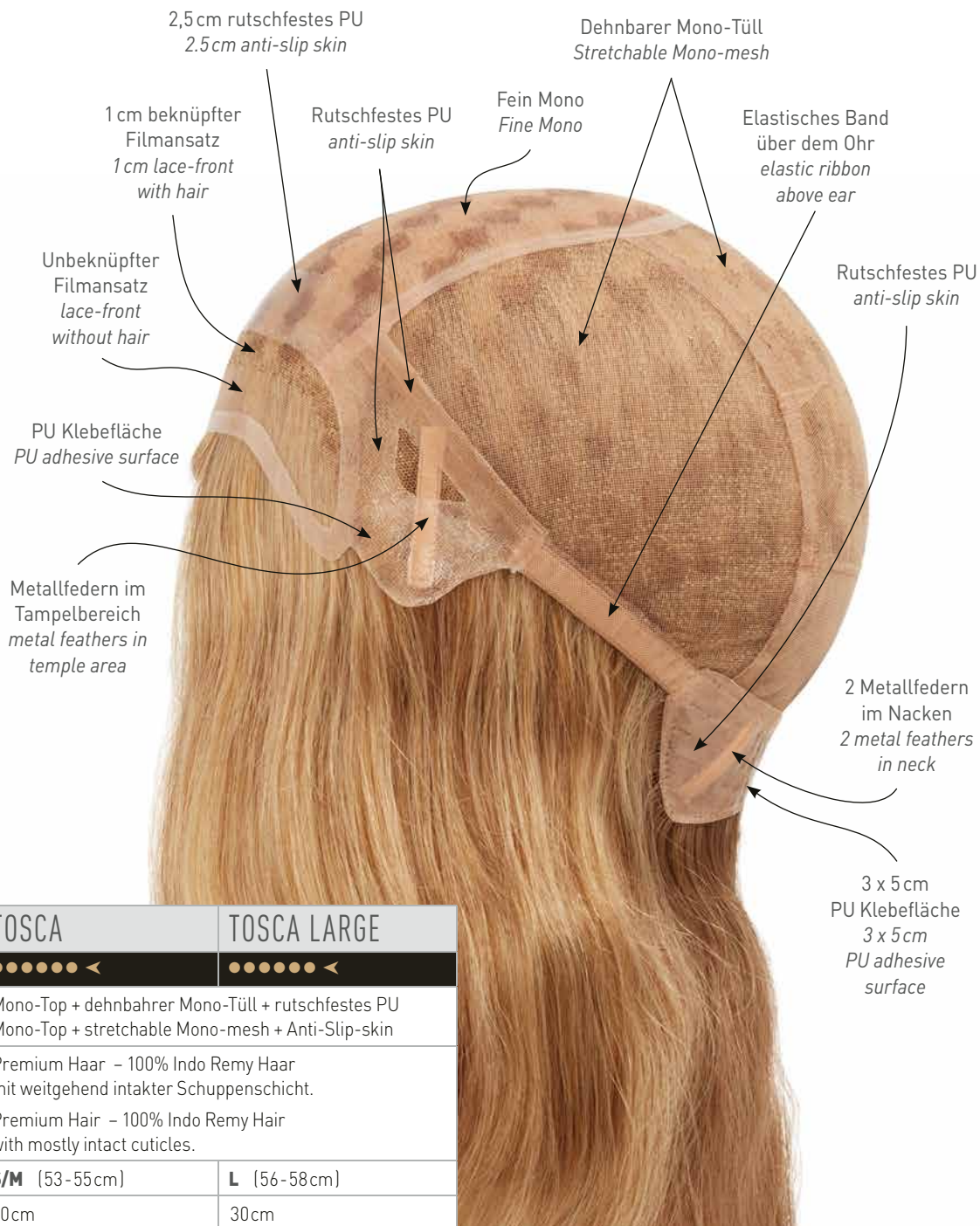
Haarqualität: Premium Haar, 100% Indo Remy Haar mit weitgehend intakter Schuppenschicht.

Hair Quality: Premium Hair, 100 % Indo Remy Hair with mostly intact cuticles.

Qualité de cheveux: Cheveux Supérieurs, 100 % Cheveux Remy indiens avec des écailles largement intactes.

Calidad del cabello: Cabello premium, 100% cabello Indo Remy con capa cobertiza amplia e intacta.

Qualità dei capelli: qualità superiore, capelli Indo Remy al 100% con cuticola pressoché intatta.



TOSCA STYLES	TOSCA	TOSCA LARGE
VERARBEITUNG / QUALITY	●●●●● ◀	●●●●● ◀
MONTUR / CAP	Mono-Top + dehnbarer Mono-Tüll + rutschfestes PU Mono-Top + stretchable Mono-mesh + Anti-Slip-skin	
HAARQUALITÄT / HAIR QUALITY	Premium Haar – 100% Indo Remy Haar mit weitgehend intakter Schuppenschicht. Premium Hair – 100% Indo Remy Hair with mostly intact cuticles.	
GRÖSSE / SIZE	S/M (53-55cm)	L (56-58cm)
HAARLÄNGE / HAIR LENGTH	30cm	30cm
HAARDICHTE / HAIR VOLUME	100-115% leicht bis leicht-mittel light to light-medium	
BROWN COLOURS	2, 4, 6/30, 8, 8/11, 8/29, 10	2, 4, 6/30, 8, 10
BLOND COLOURS	Chocolate/Cream-Root (10/27/20R+Root8), 12, Honey-Toast (12/15/25-12), Honey-Mix (12A/25R/28), Vanilla-Root (14/26+Root14), 20-R, Champagne-Root (20R/23+Root10), 23A/26	12, Honey-Mix (12A/25R/28), 14/26, 20-R, Champagne-Root (20R/23+Root10), 23A/26
RED COLOURS	6/30, 33/30, 33/32B, 30/27	6/30, 33, 33/32B, 30/27
GREY COLOURS	36', 38'	36', 38'
	* Weißanteil aus Synthetik White hair made of synthetic fibre.	

TOSCA

Styles



DERMA-SOFT-200
23A/26

DERMA-SOFT-200
23A/26

CREATIVE STYLING



DERMA-SOFT-200
23A/26

CREATIVE STYLING

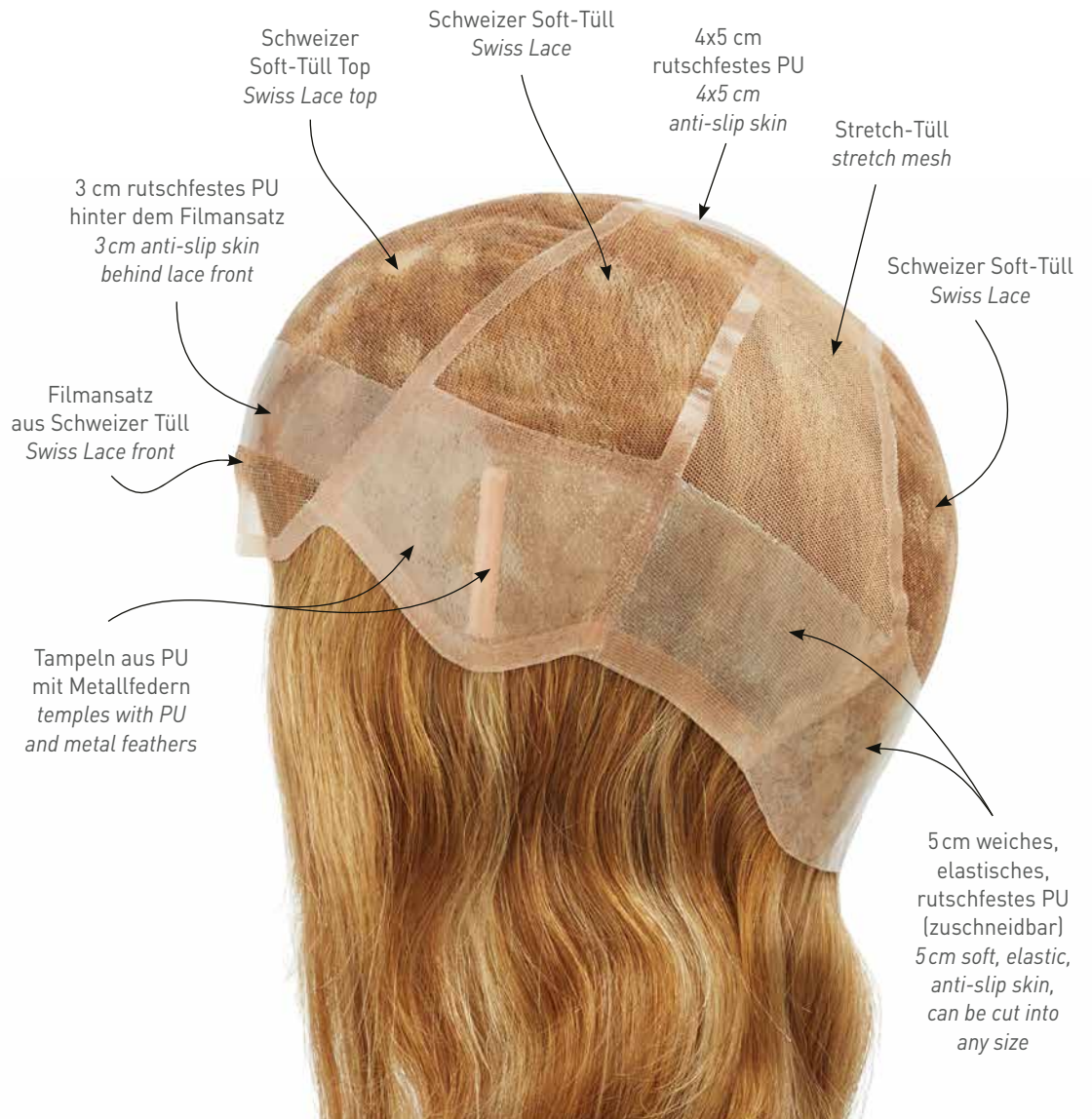


	STYLE	DERMA-SOFT-200	CONNY
VERARBEITUNG / QUALITY	●●●●● <		●●●●●
GRÖSSE / SIZE		M (54-55 cm)	L (56-58 cm)
HAARLÄNGE / HAIR LENGTH		25-35 cm	25-35 cm
HAARDICHTE / HAIR VOLUME		100-115% leicht bis leicht-mittel light to light-medium	130-150% mittel bis mittel-voll medium to medium-heavy
BROWN COLOURS		4, 6/30, 8	1-B, 4, 6, 8, 10
BLOND COLOURS		Chocolate/Cream-Root (10/27/20R+Root8), Honey-Mix (12A/25R/28), Vanilla-Root (14/26+Root14), 20-R, Danish-Blond-Root (20R/19+Root12), Champagne-Root (20R/23+Root10), 23A/26	12, 14, 18/22, 20-R, 23A/26, 26
RED COLOURS		6/30, 33/30	33, 33/32B
GREY COLOURS			56*

* Weißanteil aus Synthetik
White hair made of synthetic fibre.

DERMA-SOFT-200

- Weiche Montur aus Schweizer Soft-Tüll. 5cm weiches, elastisches PU von Tempel zu Tempel. Filmansatz mit PU.
- Hochwertiges Indohaar, Elegant Remy Haar Qualität.
- Soft cap made of Swiss soft-lace. 5cm soft, elastic PU from temple to temple. Lace-front with PU.
- High-quality Indo hair, Elegant Remy Hair.
- Bonnet doux en tulle suisse. 5 cm PU doux et élastique de tempe à tempe. Bordure invisible devant avec PU.
- Cheveux Hindous de qualité supérieure, Elegant Remy Hair.
- Montura blanda de suave tul suizo. Con 5cm de suave y elástico PU de sien a sien Bordados frontales con PU.
- Con la alta calidad del cabello Indo y la elegancia del cabello Remy.
- Base morbida in morbida tulla svizzera. PU elastico e morbido di 5 cm, da tempia a tempia. Innesto su pellicola con PU.
- Capello indo di qualità superiore, Elegant Remy Hair.



DERMA-SOFT-200

CONNY

- Echthaarklassiker – Indohaar.
- Mono+handgeknüpft+PU-Ansatz.
- Classic Human Hair Style.
- Mono+ hand-tied+PU-front.
- Style Classique Cheveux Naturels.
- Mono+implanté main+PU devant.
- Cabello natural clásico – Cabello Indo.
- Mono + anudadas a mano + raíces PU.
- Stile classico in capelli naturali.
- Mono + annodate a mano + innesto in PU.



CONNY 41

**Die EUROPEAN HAIR LINE
setzt neue Maßstäbe
in Bezug auf Hochwertigkeit!**

Die Perücken sind aus unbehandeltem
oder schonend präpariertem
europäischen Echthaar gefertigt
und sind die luxuriöseste Linie
im hochwertigen Sofortprogramm.

Belle  Madamé[®]
European Hair Line

**The EUROPEAN HAIR LINE
sets new standards
in terms of high quality!**

The wigs are made of untreated
or carefully processed
European human hair and are
the most luxurious line in the
high-quality ex stock program.



VERONA
Champagne-Mix

SEITE
PAGE

44

VERONA



FERRARA-33
Medium-Blond-Mix

46

FERRARA

VERONA und FERRARA Perücken sind aus EURO-REMY-HAAR – einem erstklassig präparierten Europäischen Echthaar. Das Haar wird schonend veredelt und maximal bis zu zwei Farbstufen verändert. Die schonende Präparation realisiert gleichbleibende Haarfarben und Haarlängen.

VERONA and FERRARA wigs are made from EURO-REMY-HAIR – a first-class processed European Human Hair. The hair is gently refined and the hair colour is changed up to a maximum of two grades. The gentle preparation realizes consistent hair colours and hair lengths.



RAPUNZEL-25
Dark-Blond

50

RAPUNZEL

RAPUNZEL Perücken sind aus EURO-ROH-SCHNITTHAAR – einem unbehandelten und nicht gefärbten Europäischen Echthaar. Das Haar stammt aus der Charity-Aktion „RAPUNZEL“ des Bundesverbandes der Zweithaar-Spezialisten e.V. und daher vorwiegend aus Deutschland.

RAPUNZEL wigs are made from EURO-RAW-HAIR – an untreated and not coloured European Human Hair. The hair comes from the charity campaign "RAPUNZEL" of the German Association of Alternative Hair Specialists e.V. and therefore mainly from Germany.

Es erfolgt eine Direktverarbeitung der ersteigerten Haarzöpfe. Die Haarfarben und Haarlängen unterliegen somit natürlichen Variationen. Jede Perücke ist ein Unikat.

The auctioned hair braids are processed directly. The hair colours and hair lengths are therefore subject to natural variations. Every wig is unique.

Verona

VERONA
Champagne-Mix

VERONA

●●●●●● < S/M (53-55cm)

SUPER-FRONT

HAARLÄNGEN / HAIR LENGTHS 10 - 24 cm

MONTUR / CAP Anastasia RH 2

GRÖSSE / SIZE 53.5 cm

HAARDICHTE / HAIR VOLUME 100%

leicht / light

BROWN COLOURS

Medium-Brown (4/6),

Mocca-Mix (8/10/6-6),

Light-Brown (8/10),

Chocolate-Mix (8/10/27/20)

BLOND COLOURS

Medium-Blond-Mix (11/15/27),

Ash-Blond-Root (14/16/25+Root10),

Gold-Blond-Mix (19/23A),

Champagne-Mix (20/26),

Light-Blond (23A/25R)

RED COLOURS

Red-Mix (33/30/27R)

360°

VERONA
Champagne-Mix



VERONA
Champagne-Mix



FERRARA-25
Light-Brown

FERRARA

●●●●●●●● < M (54-56 cm)

HAARLÄNGEN / HAIR LENGTHS

FERRARA - 15	15 cm
FERRARA - 25	25 cm
FERRARA - 33	33 cm

HAARDICHTE / HAIR VOLUME 115 - 130%
leicht-mittel bis mittel / light-medium to medium

BROWN COLOURS

Medium-Brown (4/6),
Mocca-Mix (8/10/6-6),
Light-Brown (8/10),
Chocolate-Mix (8/10/27/20)

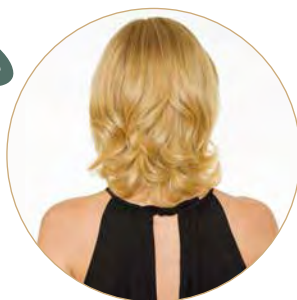
BLOND COLOURS

Medium-Blond-Mix (11/15/27),
Ash-Blond-Root (14/16/25+Root10),
Gold-Blond-Mix (19/23A),
Champagne-Mix (20/26),
Light-Blond (23A/25R)

RED COLOURS

Irish-Blond-Root (27R/28+Root27R),
Red-Mix (33/30/27R)

Ferrara



FERRARA-15
Gold-Blond-Mix



FERRARA-25
Light-Brown



FERRARA-33
Medium-Blond-Mix

FERRARA-15
Gold-Blond-Mix



FERRARA-33
Medium-Blond-Mix





FERRARA VERONA

FERRARA und VERONA Perücken sind aus EURO-REMY-HAAR – einem erstklassig präparierten Europäischen Echthaar. Das Haar wird schonend veredelt und maximal bis zu zwei Farbstufen verändert.

FERRARA and VERONA wigs are made with EURO-REMY-HAIR – a first class processed European Human Hair. The hair is gently refined and the hair colour is changed up to a maximum of two grades.

HAARLÄNGEN HAIR LENGTHS

Ferrara - 15	15 - 17 cm
Ferrara - 25	25 - 27 cm
Ferrara - 33	33 - 35 cm
Verona	10 - 24 cm

FERRARA-FARBRING

Farbring mit 11 Farben aus EURO-REMY-HAAR für Modelle Ferrara, Verona, Pisa und Ascona

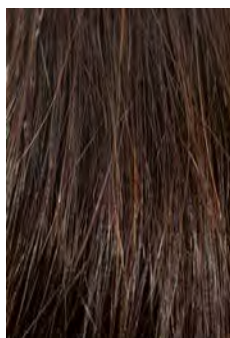
FERRARA-COLOUR-RING

Colour ring with 11 colours made from EURO-REMY-HAAR for styles Ferrara, Verona, Pisa and Ascona

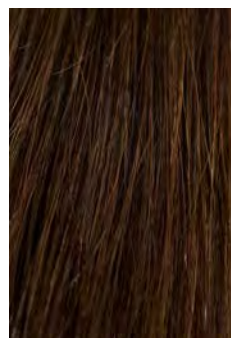
FARBÜBERSICHT COLOUR CHART

EUROPÄISCHES ECHTHAAR
EUROPEAN HUMAN HAIR

BROWN COLOURS



Medium-Brown
(4/6)



Mocca-Mix
(8/10/6-6)



Light-Brown
(8/10)

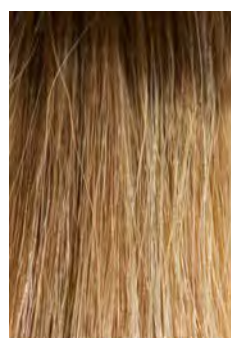


Chocolate-Mix
(8/10/27/20)

BLOND COLOURS



Medium-Blond-Mix
(11/15/27)



Ash-Blond-Root
(14/16/25+Root10)



Gold-Blond-Mix
(19/23A)



Champagne-Mix
(20/26)



Light-Blond
(23A/25R)

RED COLOURS



Irish-Blond-Root
(27R/28+Root27R)



Red-Mix
(33/30/27R)

European Hair Line



RAPUNZEL-25
Dark-Blond

RAPUNZEL

●●●●● ◀ M (53-55cm)
SUPER-FRONT

HAARLÄNGEN / HAIR LENGTHS

RAPUNZEL-15	15-20cm
RAPUNZEL-20	20-25cm
RAPUNZEL-25	25-30cm
RAPUNZEL-30	30-35cm
RAPUNZEL-35	35-40cm
RAPUNZEL-40	40-45cm
MONTUR / CAP	Anastasia RH 2

HAARDICHTE / HAIR VOLUME 100-115%
leicht bis leicht-mittel / light to light-medium

BROWN COLOURS

Dark-Brown (2/4),
Medium-Brown (4/6),
Medium-Light-Brown (6/8/30),
Light-Brown-Mix (8/10/30)

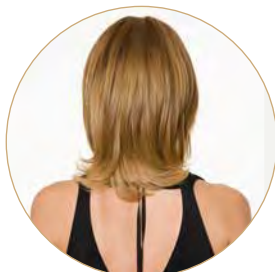
BLOND COLOURS

Dark-Blond (10/12),
Medium-Blond (11/12/15),
Medium-Blond-Mix (11/12/15/20),
Blond-Mix (15/20R/25),
Light-Blond-Mix (19/20R/25),
Light-Light-Blond (23A/25R/26)

Rapunzel



RAPUNZEL-15
Blond-Mix



RAPUNZEL-25
Dark-Blond



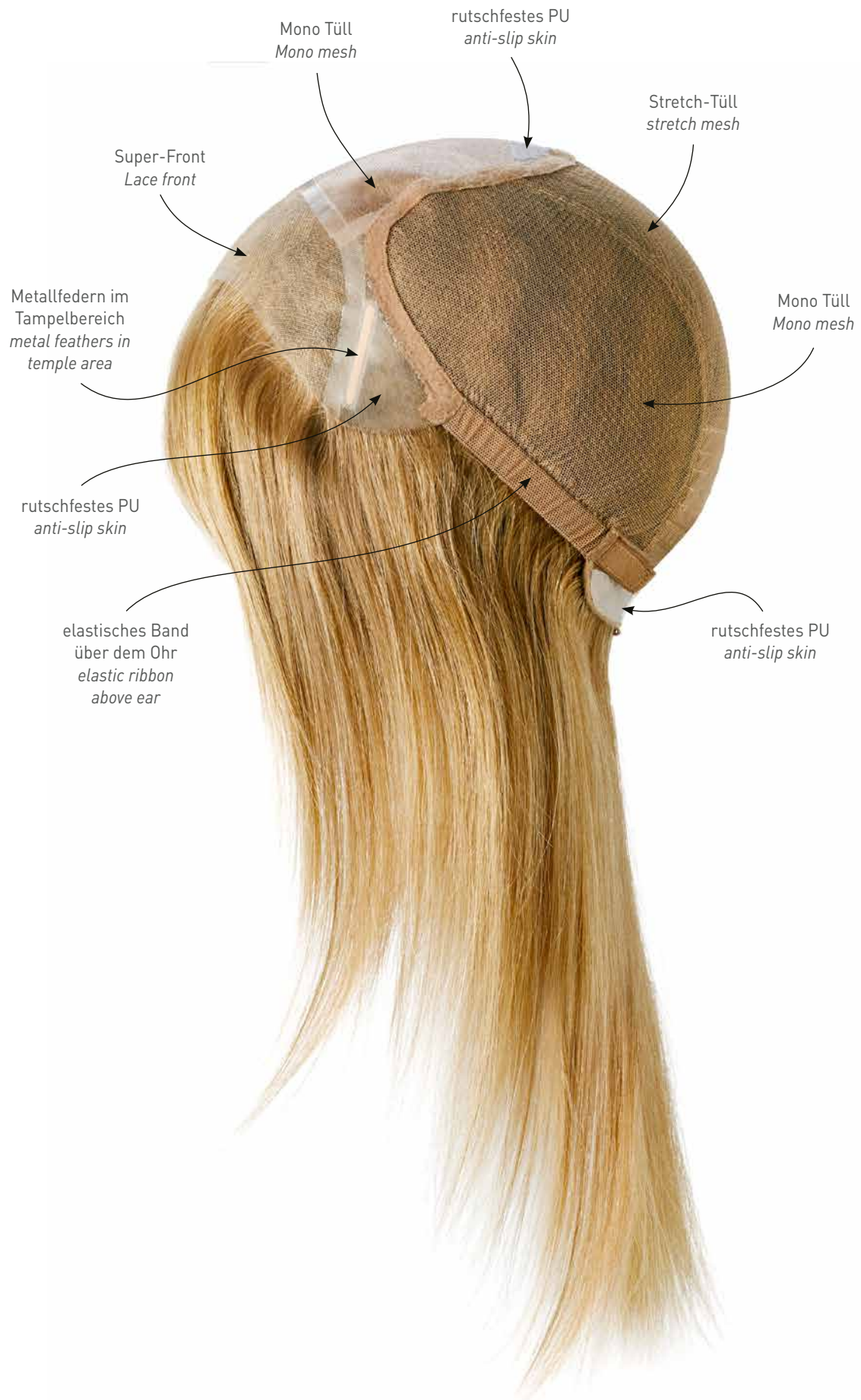
RAPUNZEL-40
Light-Brown-Mix

RAPUNZEL-15
Blond-Mix



RAPUNZEL-40
Light-Brown-Mix





Rapunzel

RAPUNZEL-20
Light-Blond-Mix

RAPUNZEL

RAPUNZEL Perücken sind aus EURO-ROH-SCHNITTHAAR – einem unbehandelten nicht präparierten Europäischen Echthaar (auch „Virgin-Hair“).

Die Charity-Aktion „RAPUNZEL“ des Bundesverbandes der Zweithaar-Spezialisten e.V. sammelt seit vielen Jahren Haarspenden, die für einen guten Zweck versteigert werden.

Das Haar der RAPUNZEL Perücken stammt aus diesen Versteigerungen. Das Haar wird nach Längen und Farben sortiert und ohne Farbänderungen verarbeitet. Jede Perücke ist ein Unikat! Die Farbbezeichnungen haben einen beschreibenden Charakter. Haarfarben, Haarlängen und Haarfall unterliegen natürlichen Variationen.

RAPUNZEL wigs are made with EURO-RAW-HAIR – an untreated and not processed European human hair (also named “Virgin-Hair”).

The charity campaign „Rapunzel“ is run by the German Association of Hair-Specialists e.V. since many years. Hair donations are collected and then auctioned for a good cause.

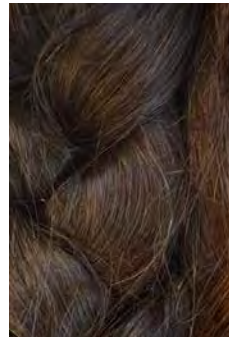
The hair of the RAPUNZEL wigs comes from these auctions. The hair is sorted by lengths and colours and used without colour changes. Every wig is unique! The colour names have a descriptive character. Hair colours, hair lengths and hair fall are subject to natural variations.

HAARLÄNGEN HAIR LENGTHS

Rapunzel - 15	15 - 20 cm
Rapunzel - 20	20 - 25 cm
Rapunzel - 25	25 - 30 cm
Rapunzel - 30	30 - 35 cm
Rapunzel - 35	35 - 40 cm
Rapunzel - 40	40 - 45 cm

FARBÜBERSICHT RAPUNZEL ECHTHAAR COLOUR CHART RAPUNZEL HUMAN HAIR

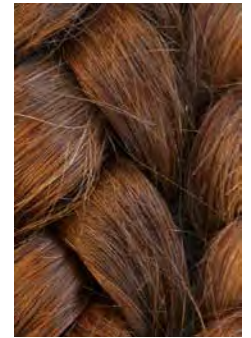
BROWN COLOURS



Medium-Brown
(4/6)



Medium-Light-Brown
(6/8/30)



Light-Brown-Mix
(8/10/30)

BLOND COLOURS



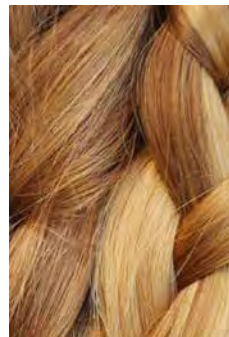
Dark-Blond
(10/12)



Medium-Blond
(11/12/15)



Medium-Blond-Mix
(11/12/15/20)



Blond-Mix
(15/20R/25)



Light-Blond-Mix
(19/20R/25)



Light-Light-Blond
(23A/25R/26)

A woman with long, wavy brown hair and blue eyes is wearing a white, long-sleeved blouse and a white skirt. She is standing against a plain white background. The text 'HAARTEILE' is in a bold, green, sans-serif font, and 'Echthaar' is in a green, cursive font, both positioned over the lower part of her torso.

HAARTEILE *Echthaar*

HAARTEILE ECHTHAAR
 HAIR PIECES HUMAN HAIR
 POSTICHES EN CHEVEUX NATURELS
 PIEZAS DE CABELLO NATURAL
 POSTICCI IN CAPELLI NATURALI

Belle Madame®
Natural Hair Line



PARIS

GRÖSSE / SIZE 14x7cm
 HAARLÄNGE / HAIR LENGTH 30cm

Mittel-Mono-Scheitel mit 4 Clipsen,
 dünnem transparenten PU-Rand
 und Film-Ansatz.

Welded-Mono-Parting with 4 clips,
 thin transparent PU-edge
 and Lace-Front.

Raie en Monofilament moyen avec 4 clips,
 bordure en PU fin et transparent
 et bordure invisible devant.

Cubierta de monofilamento con 4 clips,
 delgados y transparentes bordes PU
 y bordados frontales.

Calotta mono media con 4 clip,
 bordo sottile e trasparente in PU
 e innesto su pellicola.

BROWN COLOURS

2, 4, 4/8, 6/30, 8, 10/12

BLOND COLOURS

Chocolate/Cream-Root (10/27/20R+Root8),
 11/15, Honey-Mix (12A/25R/28),
 Vanilla-Root (14/26+Root14),
 14/26, 20R,
 Champagne-Root (20R/23+Root10),
 23A/26

RED COLOURS

6/30, 33/30, 30/27



PARIS LARGE

GRÖSSE / SIZE 16x10cm
 HAARLÄNGE / HAIR LENGTH 40cm

Mittel-Mono-Scheitel mit 4 Clipsen,
 dünnem transparenten PU-Rand
 und Film-Ansatz.

Welded-Mono-Parting with 4 clips,
 thin transparent PU-edge
 and Lace-Front.

Raie en Monofilament moyen avec 4 clips,
 bordure en PU fin et transparent
 et bordure invisible devant.

Cubierta de monofilamento con 4 clips,
 delgados y transparentes bordes PU
 y bordados frontales.

Calotta mono media con 4 clip,
 bordo sottile e trasparente in PU
 e innesto su pellicola.

BROWN COLOURS

2, 4, 4/8, Mocca-Mix (8/10/6-6),
 6/30, 8, Chocolate (8/12/30),
 Chocolate-Mix (8/10/27/20), 10/12

BLOND COLOURS

Chocolate/Cream-Root (10/27/20R+Root8),
 11/15, Honey-Toast (12/15/25-12),
 Honey-Mix (12A/25R/28),
 Vanilla-Root (14/26+Root14),
 Danish-Blond-Root (20R/19+Root12),
 Champagne-Root (20R/23+Root10),
 23A/26

RED COLOURS

6/30, 33/30, 30/27





Nigga Large



NIZZA RH

GRÖSSE / SIZE 13x8cm
HAARLÄNGE / HAIR LENGTH 35cm

Fein-Mittel-Mono-Scheitel
mit 4 Clipsen und Film-Ansatz.

Fine-Welded-Mono-Parting
with 4 clips and Lace-Front.

Raie en Monofilament fin avec
4 clips et bordure invisible devant.

Cubierta fina de monofilamento
con 4 clips y bordados frontales.

Calotta mono medio sottile
con 4 clip e innesto su pellicola.

BROWN COLOURS

Espresso (2),
Dark-Mocca-Mix (4/8),
Mocca-Mix (6/10-6),
Brown-Red-Mix (6/30),
Chocolate-Mix (8/10/27/20),
Medium-Ash-Blond (10/12)

BLOND COLOURS

Chocolate/Cream-Root (10/27/20R+Root8),
Honey-Mix (12A/25R/28),
Vanilla-Root (14/26+Root14),
Light-Blond-Mix (15/20/23+Root11),
Danish-Blond-Root (20R/19+Root12),
Champagne-Root (20R/23+Root10),
Swedish-Blond-Root (23A/26+Root16)**

RED COLOURS

Brown-Red-Mix (6/30),
Dark-Auburn-Mix (33/30),
Light-Copper-Mix (30/27)

GREY COLOURS

Salt & Pepper (44/51/60)*, 56/53*

* Weißanteil aus hitzebeständigem Synthetik.
White hair made of heat-resistant synthetic fibre.



NIZZA LARGE RH

GRÖSSE / SIZE 17x12cm
HAARLÄNGE / HAIR LENGTH 35cm

Fein-Mittel-Mono-Scheitel
mit 4 Clipsen und Film-Ansatz.

Fine-Welded-Mono-Parting
with 4 clips and Lace-Front.

Raie en Monofilament fin avec
4 clips et bordure invisible devant.

Cubierta fina de monofilamento
con 4 clips y bordados frontales.

Calotta mono medio sottile
con 4 clip e innesto su pellicola.

BROWN COLOURS

Espresso (2), Dark-Mocca-Mix (4/8),
Mocca-Mix (6/10-6), Chocolate (8/12/30),
Chocolate-Mix (8/10/27/20),
Medium-Ash-Blond (10/12)

BLOND COLOURS

Chocolate/Cream-Root (10/27/20R+Root8),
Honey-Mix (12A/25R/28),
Vanilla-Root (14/26+Root14),
Light-Blond-Mix (15/20/23+Root11),
Danish-Blond-Root (20R/19+Root12),
Champagne-Root (20R/23+Root10),
Swedish-Blond-Root (23A/26+Root16)**

RED COLOURS

Dark-Cherry (4/133/32B),
Terracotta-Gold (30/8/27R-8),
Dark-Auburn-Mix (33/30)

GREY COLOURS

38/39*, Salt & Pepper (44/51/60)*, 56/53*,
Blond-Grey-Root (17/101+Root18)*

** Enthält 5% hitzebeständiges Synthetikkaar.
Contains 5% heat-resistant synthetic hair.



NIZZA LONG RH

GRÖSSE / SIZE 17x12cm
HAARLÄNGE / HAIR LENGTH 45cm

Fein-Mittel-Mono-Scheitel
mit 4 Clipsen und Film-Ansatz.

Fine-Welded-Mono-Parting
with 4 clips and Lace-Front.

Raie en Monofilament fin avec
4 clips et bordure invisible devant.

Cubierta fina de monofilamento
con 4 clips y bordados frontales.

Calotta mono medio sottile
con 4 clip e innesto su pellicola.

BROWN COLOURS

Espresso (2),
Dark-Mocca-Mix (4/8),
Mocca-Mix (6/10-6),
Brown-Red-Mix (6/30),
Chocolate (8/12/30),
Chocolate-Mix (8/10/27/20),
Medium-Ash-Blond (10/12)

BLOND COLOURS

Chocolate/Cream-Root (10/27/20R+Root8),
Honey-Mix (12A/25R/28),
Vanilla-Root (14/26+Root14),
Light-Blond-Mix (15/20/23+Root11),
Champagne-Root (20R/23+Root10),
Swedish-Blond-Root (23A/26+Root16)**

RED COLOURS

Brown-Red-Mix (6/30),
Dark-Auburn-Mix (33/30)



V-PART RH
Light-Blond-Mix

HAARTEILE ECHTHAAR
HAIR PIECES HUMAN HAIR
POSTICHES EN CHEVEUX NATURELS
PIEZAS DE CABELLO NATURAL
POSTICCI IN CAPELLI NATURALI

V-part





V-PART RH

GRÖSSE / SIZE 9-12x15,5cm
HAARLÄNGE / HAIR LENGTH 45cm

Mono-Haarteil
mit 4 Clipsen und PU-Rand.

Mono hair piece
with 4 clips and PU edge.

Postiche en Monofilament
avec 4 clips et bordure en PU.

Monofilamento postizo
con 4 clips y borde de PU.

Posticcio mono
con 4 clip e bordo in PU.

BROWN COLOURS

Espresso-Mix (2/4),
Dark-Mocca-Mix (4/8),
Mocca-Mix (6/10-6),
Chocolate (8/12/30)

BLOND COLOURS

Chocolate/Cream-Root (10/27/20R+Root8),
Light-Blond-Mix (15/20/23+Root11),
Champagne-Root (20R/23+Root10),
Swedish-Blond-Root (23A/26+Root16)**

RED COLOURS

Light-Copper-Mix (30/27)



ALMERIA RH

GRÖSSE / SIZE 15x12,5cm
HAARLÄNGE / HAIR LENGTH 20-25cm

Flexibles, weiches Polyesternetz mit
schmalem PU-Rand und 4 Clipsen.

Flexible, soft polyester net with
narrow PU edge and 4 clips.

Filet en Polyèstre souple et doux avec
bordure étroite en PU et 4 clips.

Red de poliéster flexible y suave con
borde estrecho de PU y 4 clips.

Morbida rete flessibile in poliestere con
sottile bordo in PU e 4 clips.

BROWN COLOURS

Espresso (2), Dark-Mocca-Mix (4/8),
Mocca-Mix (6/10-6), Chocolate (8/12/30),
Chocolate-Mix (8/10/27/20),
Medium-Ash-Blond (10/12)

BLOND COLOURS

Chocolate/Cream-Root (10/27/20R+Root8),
Honey-Mix (12A/25R/28),
Vanilla-Root (14/26+Root14),
Danish-Blond-Root (20R/19+Root12),
Champagne-Root (20R/23+Root10),
Swedish-Blond-Root (23A/26+Root16)**

RED COLOURS

Dark-Cherry (4/133/32B),
Terracotta-Gold (30/8/27R-8),
Dark-Auburn-Mix (33/30)

GREY COLOURS

38/39*, Salt & Pepper (44/51/60)*, 56/53*,
Blond-Grey-Root (17/101+Root18)*



** Enthält 5% hitzbeständiges Synthetikkaar.
Contains 5% heat-resistant synthetic hair.

* Weißanteil aus hitzbeständigem Synthetik.
White hair made of heat-resistant synthetic fibre.



POLY-LINE *Styles*

POLY-LINE-200



Belle Madame[®]
Natural Hair Line

HAARTEILE ECHTHAAR
 HAIR PIECES HUMAN HAIR
 POSTICHES EN CHEVEUX NATURELS
 PIEZAS DE CABELLO NATURAL
 POSTICCI IN CAPELLI NATURALI

Belle Madame®
Natural Hair Line



POLY-LINE-100

GRÖSSE / SIZE 19x16 cm
 HAARLÄNGE / HAIR LENGTH 30 cm
 WABENGRÖSSE / NET SIZE 6 mm²

Fein-Mono Haarteil mit Polyester-Netz,
 3 Clipsen und PU-Ansatz.
 Fine-Mono hair piece with Polyester-Net,
 3 clips and PU-Front.
 Postiche avec Monofilament fin et filet en
 Polyèstre, 3 clips et PU devant.
 Pieza de cabello con monofilamento fino
 y red de poliéster, 3 clips y PU frontal.
 Posticcio mono sottile con rete in
 poliestere, 3 clip e innesto in PU.

BROWN COLOURS

2, 4, 4/8, 6/30, 8, 10/12

BLOND COLOURS

Chocolate/Cream-Root (10/27/20R+Root8),
 Honey-Mix (12A/25R/28),
 Vanilla-Root (14/26+Root14),
 20-R,
 Danish-Blond-Root (20R/19+Root12),
 Champagne-Root (20R/23+Root10),
 23A/26

RED COLOURS

6/30, 6/32B, 33/30, 30/27



POLY-LINE-200

GRÖSSE / SIZE 16x14 cm
 HAARLÄNGE / HAIR LENGTH 30 cm
 WABENGRÖSSE / NET SIZE 6 mm²

Fein-Mono Haarteil mit Polyester-Netz,
 4 Clipsen und PU-Ansatz.
 Fine-Mono hair piece with
 Polyester-Net, 4 clips and PU-Front.
 Postiche avec Monofilament fin et filet
 en Polyèstre, 4 clips et PU devant.
 Pieza de cabello en monofilamento fino
 y red de poliéster, 4 clips y PU frontal.
 Posticcio mono sottile con rete in
 poliestere, 4 clip e innesto in PU.

BROWN COLOURS

2, 4, 4/8, 6/30, 8, 10/12

BLOND COLOURS

Chocolate/Cream-Root (10/27/20R+Root8),
 11/15,
 Honey-Toast (12/15/25-12),
 Honey-Mix (12A/25R/28),
 14/26, 20-R,
 Champagne-Root (20R/23+Root10),
 23A/26

RED COLOURS

6/30, 33/30, 30/27

GREY COLOURS

38*, 44*, 45*



SOFT-LINE 3.5

GRÖSSE / SIZE 19x17 cm
 HAARLÄNGE / HAIR LENGTH 35 cm
 WABENGRÖSSE / NET SIZE 3,5 mm²

Fein-Mono Haarteil mit weichem
 stabilen Nylon-Netz,
 4 Clipsen und Film/PU-Ansatz.
 Fine-Mono hair piece with
 soft stable nylon-net,
 4 clips and Lace/PU-Front.
 Postiche en Monofilament fin avec
 doux filet de nylon résistant,
 4 clips et PU/bordure invisible devant.
 Pieza de cabello de monofilamento fino
 con red de nylon blanda y estable con
 4 clips, bordados frontales y bordes PU.
 Posticcio mono sottile con
 morbida rete di nylon stabile,
 4 clip e innesto in PU/su pellicola.

BROWN COLOURS

2, 4, 4/8, 6/30, 8, 10/12

BLOND COLOURS

Chocolate/Cream-Root (10/27/20R+Root8),
 Honey-Mix (12A/25R/28),
 14/26, 20-R,
 Champagne-Root (20R/23+Root10),
 23A/26

RED COLOURS

6/30, 33/30, 30/27

* Weißanteil aus Synthetik.
 White hair made of synthetic fibre.



NYLON-LINE-75

INDIAN-CHINESE-MIX-HAIR

GRÖSSE / SIZE	16x12cm
HAARLÄNGE / HAIR LENGTH	30cm
WABENGRÖSSE / NET SIZE	5mm ²

Feines Nylon Netz Haarteil mit 4 Clipsen.

Fine nylon-net hair piece with 4 clips.

Postiche avec filet fin en nylon et avec 4 clips.

Pieza de cabello con red fina de nylon y 4 clips.

Posticcio con rete sottile in nylon con 4 clip

BROWN COLOURS

2, 4, 4/8,
Mocca-Mix (8/10-6-6),
6/30,
Chocolate (8/12/30),
Chocolate-Mix (8/10/27/20),
10/12

BLOND COLOURS

Chocolate/Cream-Root (10/27/20R+Root8),
Honey-Mix (12A/25R/28),
14/26,
Champagne-Root (20R/23+Root10),
23A/26

RED COLOURS

6/30, 33/30



NYLON-LINE-150

INDIAN-CHINESE-MIX-HAIR

GRÖSSE / SIZE	19x16cm
HAARLÄNGE / HAIR LENGTH	30cm
WABENGRÖSSE / NET SIZE	5mm ²

Fein-Mono Haarteil mit Nylon-Netz, 4 Clipsen und Lace-Front.

Fine-Mono hair piece with nylon-net, 4 clips and lace-front.

Postiche avec Monofilament fin et filet en nylon, 4 clips et bordure invisible devant.

Pieza de cabello en monofilamento fino red y de nylon, 4 clips y bordados frontales.

Posticcio mono sottile con rete in nylon, 4 clip e innesto su pellicola.

BROWN COLOURS

2, 4, 4/8,
Mocca-Mix (8/10/6-6),
6/30,
Chocolate (8/12/30),
Chocolate-Mix (8/10/27/20),
10/12

BLOND COLOURS

Chocolate/Cream-Root (10/27/20R+Root8),
Honey-Mix (12A/25R/28),
14/26,
Champagne-Root (20R/23+Root10),
23A/26

RED COLOURS

6/30, 33/30

GREY COLOURS

39-38*, 45-36*

HAARTEILE ECHTHAAR
 HAIR PIECES HUMAN HAIR
 POSTICHES EN CHEVEUX NATURELS
 PIEZAS DE CABELLO NATURAL
 POSTICCI IN CAPELLI NATURALI



NYLON-LINE-250

INDIAN-CHINESE-MIX-HAIR

GRÖSSE / SIZE	20x20cm
HAARLÄNGE / HAIR LENGTH	30cm
WABENGRÖSSE / NET SIZE	5mm ²

Fein-Mono Haarteil mit Nylon-Netz,
4 Clipsen und Lace-Front.

Fine-Mono hair piece with nylon-net,
4 clips and lace-front.

Postiche avec Monofilament fin et filet en
nylon, 4 clips et bordure invisible devant.

Pieza de cabello en monofilamento fino red
y de nylon, 4 clips y bordados frontales.

Posticcio mono sottile con rete in nylon,
4 clip e innesto su pellicola.

BROWN COLOURS

4,
Mocca-Mix (8/10/6-6),
Chocolate-Mix (8/10/27/20)

BLOND COLOURS

Chocolate/Cream-Root (10/27/20R+Root8),
Honey-Mix (12A/25R/28),
23A/26

RED COLOURS

33/30



NYLON-LINE-300

INDIAN-CHINESE-MIX-HAIR

GRÖSSE / SIZE	19x16cm
HAARLÄNGE / HAIR LENGTH	30cm
WABENGRÖSSE / NET SIZE	5mm ²

Nylon-Netz Haarteil
mit 4 Clipsen.

Nylon-net hair piece
with 4 clips.

Postiche avec filet en nylon
et avec 4 clips.

Pieza de cabello con red de nylon
y 4 clips.

Posticcio con rete in nylon
con 4 clip

BROWN COLOURS

2, 4, 4/8,
Mocca-Mix (8/10/6-6), 6/30,
Chocolate (8/12/30),
Chocolate-Mix (8/10/27/20),
10/12

BLOND COLOURS

Chocolate/Cream-Root (10/27/20R+Root8),
Honey-Mix (12A/25R/28), 14/26,
Champagne-Root (20R/23+Root10),
23A/26

RED COLOURS

6/30, 33/30

Nylon-Line



BARCELONA RH
Chocolate-Mix

Barcelona

HAARTEILE ECHTHAAR
HAIR PIECES HUMAN HAIR
POSTICHES EN CHEVEUX NATURELS
PIEZAS DE CABELLO NATURAL
POSTICCI IN CAPELLI NATURALI



BARCELONA LARGE RH

SUPER-FRONT

GRÖSSE / SIZE 28x24 cm

HAARLÄNGE / HAIR LENGTH 23-28 cm

Halbperücke: Monofilament + handgeknüpft mit 4 Clipsen und Super-Front.

Half-wig: Monofilament + hand-tied with 4 clips and Super-Front.

Demi-Perruque: Monofilament + implanté main avec 4 clips et Super-Front.

Media-Peluca: Monofilamento + anudada a mano con 4 clips y Super-Front.

Mezza-Parrucche: Monofilamento + annodata a mano con 4 clip e Super-Front.

BROWN COLOURS

Espresso (2),
Dark-Mocca-Mix (4/8),
Mocca-Mix (6/10-6),
Brown-Red-Mix (6/30),
Chocolate (8/12/30),
Chocolate-Mix (8/10/27/20),
Medium-Ash-Blond (10/12)

BLOND COLOURS

Chocolate/Cream-Root (10/27/20R+Root8),
Honey-Mix (12A/25R/28),
Light-Blond-Mix (15/20/23+Root11),
Vanilla-Mix-Root (20/12A/23A+Root10/12A),
Swedish-Blond-Root (23A/26+Root16)**

RED COLOURS

Brown-Red-Mix (6/30),
Dark-Auburn-Mix (33/30)

GREY COLOURS

Salt & Pepper (44/51/60)*,
56/53*,
Blond-Grey-Root (17/101+Root18)*



BARCELONA RH

SUPER-FRONT
GRÖSSE / SIZE 22x22cm
HAARLÄNGE / HAIR LENGTH 18-23cm

- Halbperücke: Monofilament + handgeknüpft mit 4 Clipsen und Super-Front.
Half-wig: Monofilament + hand-tied with 4 clips and Super-Front.
Demi-Perruque: Monofilament + implanté main avec 4 clips et Super-Front.
Media-Peluca: Monofilamento + anudada a mano con 4 clips y Super-Front.
Mezza-Parrucche: Monofilamento + annodata a mano con 4 clip e Super-Front.

BROWN COLOURS

Espresso (2), Dark-Mocca (4), Dark-Mocca-Mix (4/8), Mocca-Mix (6/10-6), Chocolate (8/12/30), Chocolate-Mix (8/10/27/20), Medium-Ash-Blond (10/12)

BLOND COLOURS

Caramel-Root (12/27/22H+Root10), Honey-Toast (12/15/25-12), Danish-Blond-Root (20R/19+Root12), Vanilla-Mix-Root (20/12A/23A+Root10/12A), Light-Blond-Mix (15/20/23+Root11), Champagne-Root (20R/23+Root10), Swedish-Blond-Root (23A/26+Root16)**

RED COLOURS

Terracotta-Gold (30/8/27R-8), Dark-Auburn-Mix (33/30)

GREY COLOURS

Salt & Pepper (44/51/60)*, 45-36-39*, 56/53-39*

** Enthält 5% hitzbeständiges Synthetikaar.
Contains 5% heat-resistant synthetic hair.



GRANADA RH

GRÖSSE / SIZE 17,5x17cm
HAARLÄNGE / HAIR LENGTH 11,5-15cm

- Mono Haarteil mit 4 Clipsen, PU-Ansatz und Tressen von Tempel-zu-Tempel.
Mono hair piece with 4 clips, PU-Front and wefts from temple-to-temple.
Postiche en Monofilament avec 4 clips, PU devant et des bandes de tempé à tempé.
Pieza de cabello en monofilamento con 4 clips, PU frontal y tramas de sien a sien.
Posticcio mono con 4 clip, innesto in PU e fasce da tempia a tempia.

BROWN COLOURS

Espresso (2), Dark-Mocca-Mix (4/8), Brown-Red-Mix (6/30), Light-Brown (8), Medium-Ash-Blond (10/12)

BLOND COLOURS

Chocolate/Cream-Root (10/27/20R+Root8), 11/15, Honey-Toast (12/15/25-12), Honey-Mix (12A/25R/28), Vanilla-Root (14/26+Root14), Cognac-Root (15/20R/25+Root12), Danish-Blond (19/20R), Champagne-Root (20R/23+Root10), 23A/26

RED COLOURS

Brown-Red-Mix (6/30), Dark-Auburn-Mix (33/30), Light-Copper-Mix (30/27)

GREY COLOURS

Salt & Pepper (44/51/60)*, 45*, 56/53*

* Weißanteil aus hitzbeständigem Synthetik.
White hair made of heat-resistant synthetic fibre.

VALENCIA RH

GRÖSSE / SIZE 18x18cm
HAARLÄNGE / HAIR LENGTH 25cm

- Fein-Mono Haarteil mit 4 Clipsen, PU-Ringen zum Zuschneiden und Film-Ansatz.
Fine-Mono hair piece with 4 clips, PU-rings for base cutting and Lace-Front.
Postiche en Monofilament fin avec 4 clips, des anneaux de PU pour découper et de la bordure invisible devant.
Pieza de cabello en monofilamento fino con 4 clips, anillo PU para el corte de base y bordados frontales.
Posticcio mono sottile con 4 clip, anelli in PU da tagliare e innesto su pellicola.

BROWN COLOURS

Espresso (2), Dark-Mocca-Mix (4/8), Brown-Red-Mix (6/30), Light-Brown (8), Medium-Ash-Blond (10/12)

BLOND COLOURS

Chocolate/Cream-Root (10/27/20R+Root8), Honey-Toast (12/15/25-12), Honey-Mix (12A/25R/28), Vanilla-Root (14/26+Root14), Danish-Blond (19/20R), Champagne-Root (20R/23+Root10), 23A/26

RED COLOURS

Brown-Red-Mix (6/30), Dark-Auburn-Mix (33/30), Light-Copper-Mix (30/27)

GREY COLOURS

45*



MALAGA RH
Danish-Blond-Root

HAARTEILE ECHTHAAR
HAIR PIECES HUMAN HAIR
POSTICHES EN CHEVEUX NATURELS
PIEZAS DE CABELLO NATURAL
POSTICCI IN CAPELLI NATURALI



MALAGA RH
Danish-Blond-Root

Malaga



66





MALAGA RH

GRÖSSE / SIZE 17x16 cm
HAARLÄNGE / HAIR LENGTH 35 cm

Mono-Haarteil mit 4 Clipsen, Film-Ansatz im Stirnbereich, Mono-Scheitel und Tressen von Tempel-zu-Tempel.

Mono hair piece with 4 clips, Lace-Front, Mono-Parting and wefts from temple-to-temple.

Postiche en Monofilament avec 4 clips, Bordure invisible devant, mono-sommet et des bandes de tempe à tempe.

Monofilamento postizo con 4 clips, Película invisible en la zona de la frente, mono-partidura y tejido de sien a sien.

Posticcio mono con 4 clip, Lavorazione a innesto su pellicola nella zona frontale, mono-riga e fasce da tempia a tempia.

BROWN COLOURS

Espresso (2), Dark-Mocca (4), Dark-Mocca-Mix (4/8), Mocca-Mix (6/10-6), Chocolate (8/12/30), Chocolate-Mix (8/10/27/20), Medium-Ash-Blond (10/12)

BLOND COLOURS

Caramel-Root (12/27/22H+Root10), Honey-Toast (12/15/25-12), Danish-Blond-Root (20R/19+Root12), Vanilla-Mix-Root (20/12A/23A+Root10/12A), Champagne-Root (20R/23+Root10), Swedish-Blond-Root (23A/26+Root16)**

RED COLOURS

Terracotta-Gold (30/8/27R-8), Dark-Auburn-Mix (33/30)



GRANADA LONG RH
Terracotta-Gold



GRANADA LONG RH

GRÖSSE / SIZE 17,5x17 cm
HAARLÄNGE / HAIR LENGTH 22,5-40 cm

Mono Haarteil mit 4 Clipsen, PU/Film-Ansatz und Tressen von Tempel-zu-Tempel.

Mono hair piece with 4 clips, PU/Lace-Front and wefts from temple-to-temple.

Postiche en Monofilament avec 4 clips, PU/bordure invisible devant et des bandes de tempe à tempe.

Pieza de cabello en monofilamento con 4 clips, PU/bordados frontales y tramas de sien a sien.

Posticcio mono con 4 clip, innesto in PU/su pellicola e fasce da tempia a tempia.

BROWN COLOURS

Espresso (2), Dark-Mocca-Mix (4/8), Mocca-Mix (6/10-6), Brown-Red-Mix (6/30), Chocolate-Mix (8/10/27/20), Medium-Ash-Blond (10/12)

BLOND COLOURS

Chocolate/Cream-Root (10/27/20R+Root8), Honey-Mix (12A/25R/28), Light-Blond-Mix (15/20/23+Root11), Danish-Blond-Root (20R/19+Root12), Vanilla-Mix-Root (20/12A/23A+Root10/12A), Champagne-Root (20R/23+Root10), Swedish-Blond-Root (23A/26+Root16)**

RED COLOURS

Brown-Red-Mix (6/30), Terracotta-Gold (30/8/27R), Dark-Auburn-Mix (33/30)

GREY COLOURS

Salt & Pepper (44/51/60)*, 56/53*

** Enthält 5% hitzbeständiges Synthetikhaar.
Contains 5% heat-resistant synthetic hair.

* Weißanteil aus hitzbeständigem Synthetik.
White hair made of heat-resistant synthetic fibre.



PISA

EUROPEAN REMY HAIR

GRÖSSE / SIZE	19x16cm
HAARLÄNGE / HAIR LENGTH	30cm
HAARDICHTE / HAIR VOLUME	115%

leicht-mittel / light-medium

Haarteil aus EURO-REMY-HAAR – einem erstklassig präparierten Europäischen Echthaar. Das Eurohaar wird schonend veredelt und maximal bis zu zwei Farbstufen verändert.

Haarteil aus feinem Mittel-Mono mit 4 Clipsen, PU-Ansatz und Tressen am Hinterkopf.

Hair piece with EURO-REMY-HAAR – a first class processed European Hair.

The Eurohair is gently refined and the hair colour is changed up to maximum two grades.

Hair piece with fine Welded-Mono, 4 clips, PU-Front and wefts in back.

FERRARA-FARBRING / COLOUR-RING

BROWN COLOURS

Medium-Brown (4/6),
Mocca-Mix (8/10/6-6),
Light-Brown (8/10),
Chocolate-Mix (8/10/27/20)

BLOND COLOURS

Medium-Blond-Mix (11/15/27),
Gold-Blond-Mix (19/23A),
Champagne-Mix (20/26),
Light-Blond (23A/25R)

RED COLOURS

Red-Mix (33/30/27R)



ASCONA

EUROPEAN REMY HAIR

GRÖSSE / SIZE	20x17,5cm
HAARLÄNGE / HAIR LENGTH	30cm
HAARDICHTE / HAIR VOLUME	115 - 130%

leicht-mittel bis mittel / light-medium to medium

Haarteil aus EURO-REMY-HAAR – einem erstklassig präparierten Europäischen Echthaar. Das Eurohaar wird schonend veredelt und maximal bis zu zwei Farbstufen verändert.

Tressen in Kreisen auf Nylon-Netz genäht mit 3 Clipsen, PU-Ansatz und Mono-Scheitel.

Hair piece with EURO-REMY-HAAR – a first class processed European Hair.

The Eurohair is gently refined and the hair colour is changed up to maximum two grades.

Wefts sewn in circles on nylon-net with 3 clips, PU-front and mono-parting.

FERRARA-FARBRING / COLOUR-RING

BROWN COLOURS

Medium-Brown (4/6),
Mocca-Mix (8/10/6-6),
Light-Brown (8/10),
Chocolate-Mix (8/10/27/20)

BLOND COLOURS

Medium-Blond-Mix (11/15/27),
Gold-Blond-Mix (19/23A),
Champagne-Mix (20/26),
Light-Blond (23A/25R)

RED COLOURS

Red-Mix (33/30/27R)



MILANO

INDIAN-CHINESE-MIX-HAIR

GRÖSSE / SIZE	19x17cm
HAARLÄNGE / HAIR LENGTH	30cm
WABENGRÖSSE / NET SIZE	7mm²

Fein-Mono Scheitel mit PU-Ansatz und Waben-Bändermontur aus Polyester-Mono mit 4 Clipsen.

Fine-Mono Parting with PU-Front and honeycomb ribbon cap made of polyester-mono with 4 clips.

Raie en Monofilament fin avec PU devant et bonnet de rubans en nid d'abeilles de polyester-monofilament avec 4 clips.

Monofilamento fino en la coronilla con PU frontal y cintas -panal de abeja de poliéster-monofilamento, cinta en montura con 4 clips.

Calotta mono sottile con innesto in PU e cinte a nido d'ape in poliesteremono con 4 clip.

BROWN COLOURS

2, 4, 4/8, Mocca-Mix (8/10/6-6), 6/30, 8,
Chocolate (8/12/30),
Chocolate-Mix (8/10/27/20), 10/12

BLOND COLOURS

Chocolate/Cream-Root (10/27/20R+Root8),
11/15,
Honey-Toast (12/15/25-12),
Vanilla-Root (14/26+Root14),
Danish-Blond-Root (20R/19+Root12),
Champagne-Root (20R/23+Root10),
23A/26

RED COLOURS

6/30, 33/30, 30/27



MONACO

GRÖSSE / SIZE 19x16 cm
HAARLÄNGE / HAIR LENGTH 40 cm
WABENGRÖSSE / NET SIZE 10 mm²

Fein-Mono Haarteil mit Waben-Bändern, 4 Clipsen und PU-Ansatz.
Fine-Mono hair piece with honeycomb ribbons, 4 clips and PU-Front.

Postiche en Monofilament fin avec rubans en nid d'abeilles, 4 clips et PU devant.

Pieza de cabello de monofilamento fino con cintas-panal de abejas, 4 clips y PU frontal.

Posticcio mono sottile con nastri a nido d'ape, 4 clip e innesto in PU.

BROWN COLOURS
1-B, 4, 6/30, 8, 10

BLOND COLOURS
Chocolate/Cream-Root (10/27/20R+Root8),
12, Honey-Mix (12A/25R/28),
Vanilla-Root (14/26+Root14),
14/26, 18/22, 20, 23A/26, 26

RED COLOURS
6/30, 33, 33/32B, 33/27R

GREY COLOURS
36*



CONSTANCE

GRÖSSE / SIZE 16x14 cm
HAARLÄNGE / HAIR LENGTH 50 cm

Halbperücke. Tressen auf Tüll.

Half-wig. Wefts onto mesh.
Demi-perruque. Bandes en tulle.

Media peluca. Tramas en tul.
Semiparrucca. Fasce su tulle.

BROWN COLOURS
1-B, 4, 6, 8, 10

BLOND COLOURS
12, 16, 18/22, 20, 23A/26, 26

RED COLOURS
33

GREY COLOURS
36*

HAARTEILE ECHTHAAR
HAIR PIECES HUMAN HAIR
POSTICHES EN CHEVEUX NATURELS
PIEZAS DE CABELLO NATURAL
POSTICCI IN CAPELLI NATURALI



BORDEAUX

GRÖSSE / SIZE 17x16 cm
HAARLÄNGE / HAIR LENGTH 25 cm
WABENGRÖSSE / NET SIZE 10 mm²

Fein-Mono Haarteil mit Waben-Bändern, 4 Clipsen und PU-Ansatz.
Fine-Mono hair piece with honeycomb ribbons, 4 clips and PU-Front.

Postiche en Monofilament fin avec rubans en nid d'abeilles, 4 clips et PU devant.

Pieza de cabello de monofilamento fino con cintas-panal de abejas, 4 clips y PU frontal.

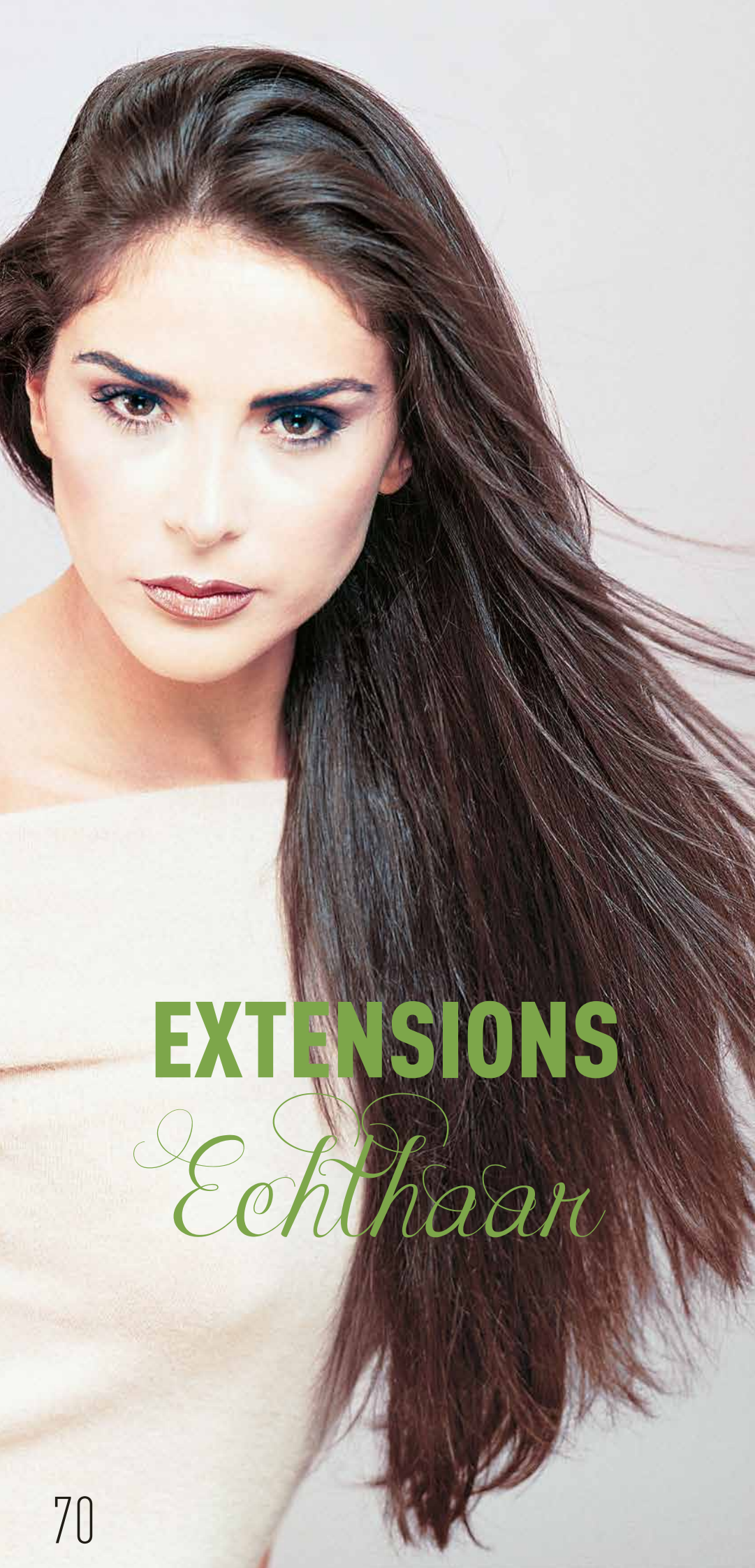
Posticcio mono sottile con nastri a nido d'ape, 4 clip e innesto in PU.

BROWN COLOURS
1-B, 4, 6, 8, 10

BLOND COLOURS
Chocolate/Cream-Root (10/27/20R+Root8),
12, Honey-Mix (12A/25R/28),
14, Vanilla-Root (14/26+Root14),
18/22, 20, 22, 23A/26, 26

RED COLOURS
33

GREY COLOURS
36*, 38*, 39*, 43*, 45*, 51*



EXTENSIONS

Echthaar

HAARVERLÄNGERUNGEN ECHTHAAR

Der seit Jahrzehnten eingeführte Markenname BELLE MADAME bürgt für die erstklassige Qualität dieser Haarverlängerungen. Es wird ausschließlich hochwertiges indisches Haar schonend veredelt.

KERATIN-EXTENSIONS sind Haarsträhnen mit Keratin-Bonding. Die Bondings werden mit Wärme aufgeweicht und ins Eigenhaar modelliert. Das Keratin-Bonding ist lang haltend und entspricht der Haarfarbe. Die V-Form ermöglicht zügiges präzises Verarbeiten und flache Bondings.

TAPE-EXTENSIONS sind Haarsträhnen in einem PU-Haarträger mit Klebestreifen. TAPE-EXTENSIONS zeichnen sich durch ihre einfache Handhabung aus. Das Eigenhaar wird zwischen zwei TAPE-EXTENSIONS ohne zusätzliche Wärme geklebt. Zudem ist der Klebestreifen austauschbar, wodurch die Strähnen mehrfach verwendet werden können.

22 Farbtöne in je zwei Haarlängen sind sofort ab Lager lieferbar.

HAIR EXTENSIONS HUMAN HAIR

Since decades the trademark BELLE MADAME acts as guarantor for first-class products which is also valid in respect of hair extensions. Only high-grade human hair of Indian provenience is treated with care.

KERATIN-EXTENSIONS are hair strands with keratin-bondings. The bondings are melted with heat and modulated into clients' hair. The keratin-bondings are long lasting and have colour identical to hair-colour. The V-shape allows quick and precise application and flat bondings.

TAPE-EXTENSIONS are hair strands in a PU-base with adhesive tape. TAPE-EXTENSIONS are characterized by their easy handling. The clients' hair is taped between two TAPE-EXTENSIONS without extra heat. In addition, the adhesive tape is interchangeable, whereby the strands can be used several times.

22 colours in two hair lengths are available directly ex stock.



KERATIN-EXTENSIONS

30cm
50cm

Lieferbar in 30cm und 50cm Haarlänge.
25 Stück pro Packung.
Available in 30cm and 50cm hair length.
25 pieces per package.

BROWN COLOURS

1-B, 2, 4, 6, 6/30, 8, 10, 12, 14

BLOND COLOURS

20, 24, 26, 1001, DB2, DB4

RED COLOURS

6/30, 17, 27, 30, 32, 33, 35, 130, 530



TAPE-EXTENSIONS

40cm
50cm

Lieferbar in 40cm und 50cm Haarlänge.
Tape-Größe 0,8cm x 4,0cm. 6 Stück pro Packung.
Available in 40cm and 50cm hair length.
Tape-size 0,8cm x 4,0cm. 6 pieces per package.

BROWN COLOURS

1-B, 2, 4, 6, 8, 10, 12, 14

BLOND COLOURS

20, 24, 26, 1001, DB2, DB4

RED COLOURS

17, 27, 30, 32, 33, 35, 130, 530



FARBÜBERSICHT EXTENSIONS COLOUR CHART EXTENSIONS

BROWN COLOURS		
	1-B	2
	4	6
8	10	
12	14	
BLOND COLOURS		
	20	24
	26	1001
DB2	DB4	
RED COLOURS		
	17	27
	30	32
33	35	
130	530	

ZUBEHÖR
ACCESSORIES

KERATIN-EXTENSIONS

EXTENSIONS MASCHINE #1
Art. Nr. 6003



EXTENSIONS MASCHINE #1
für Keratin-Extensions
EXTENSIONS MACHINE #1
for Keratin-Extensions
Art. Nr. 6003

MONTIER-ZANGE
Art. Nr. 6005



MONTIER-ZANGE
für Keratin-Extensions
ASSEMBLY PLIERS
for Keratin-Extensions
Art. Nr. 6005

REMOVER-ZANGE
Art. Nr. 6006



REMOVER-ZANGE
für Keratin-Extensions
REMOVER PLIERS
for Keratin-Extensions
Art. Nr. 6006

ENTFERNER-LÖSUNG
für Keratin-Extensions
REMOVER-SOLVENT
for Keratin-Extensions
Art. Nr. 6016

KERATIN-BONDING
24 Stück
schwarz, braun, beige, transparent
KERATIN-BONDING
24 pieces
black, brown, beige, transparent
Art. Nr. 6017



BÜRSTE / BRUSH
Art. Nr. 6015

TAPE-EXTENSIONS

EXTENSIONS-TAPE-WHITE
Art. Nr. 6050



EXTENSIONS-TAPE-WHITE
60 Stück
Ersatz tapes für Tape-Extensions
EXTENSIONS-TAPE-WHITE
60 pieces
Spare tapes for Tape-Extensions
Art. Nr. 6050

MONTIER-ZANGE
Art. Nr. 6008



MONTIER-ZANGE
für Tape-Extensions
ASSEMBLY PLIERS
for Tape-Extensions
Art. Nr. 6008

ENTFERNER-LÖSUNG
für Tape-Extensions
REMOVER-SOLVENT
for Tape-Extensions
Art. Nr. 6019

BELLE MADAME EXTENSIONS
FARBING / COLOUR-RING
22 Farben/ 22 Colours
Art. Nr. 6007

BELLE MADAME EXTENSIONS
BÜRSTE / BRUSH
Art. Nr. 6015

TAPE-EXTENSIONS
ANWENDUNG
APPLICATION



VERLÄNGERUNGEN ECHTHAAR
 EXTENSIONS HUMAN HAIR
 EXTENSIONS EN CHEVEUX NATURELS
 EXTENSIONES DE CABELLO NATURAL
 ALLUNGAMENTI IN CAPELLI NATURALI

Belle Madame®
 EXTENSIONS



BEL-HAIR-SET

Set: 11 Tressen / 11 wefts / 11 bandes / 11 fasce
 BREITE / WIDTH 20cm + 16cm + 14cm + 4x8cm + 4x2cm
 HAARLÄNGE / HAIR LENGTH 45cm

Echthaarverlängerung,
 hochwertiges indisches Haar,
 Tressen mit Clips.

Human Hair Extension,
 high-quality Indian hair,
 with wefts and clips.

Extensions cheveux naturels,
 cheveux hindous de meilleure qualité,
 avec bandes et clips.

Extensión de cabello natural,
 de calidad superior del cabello indio,
 tramas con clips.

Allungamento in capelli naturali,
 capello indo di ottima qualità,
 fasce con clip.

BROWN COLOURS
 2, 6, 6/30, 8, 10

BLOND COLOURS
 12,

Honey-Mix (12A/25R/28),
 14, 20-R, 23A/26, 26

RED COLOURS
 6/30, 27, 30, 32-B, 33, 33/32B



BEL-HAIR-WEFT

BREITE / WIDTH 100cm
 HAARLÄNGE / HAIR LENGTH 40cm

Echthaarverlängerung,
 hochwertiges indisches Haar,
 nur Tresse.

Human Hair Extension,
 high-quality Indian hair,
 only weft.

Extensions cheveux naturels,
 cheveux hindous de meilleure qualité,
 seulement des bandes.

Extensión de cabello natural,
 de calidad superior del cabello indio,
 solamente trama.

Allungamento in capelli naturali,
 capello indo di ottima qualità,
 solo fascia.

BROWN COLOURS
 2, 4, 6/30, 8, 10

BLOND COLOURS
 11/15,
 Honey-Mix (12A/25R/28),
 20R, 23A/26, 26

RED COLOURS
 6/30, 30/27, 33/30, 33/32B



CLIP-HAIR

BREITE / WIDTH 20cm
 HAARLÄNGE / HAIR LENGTH 40cm

Echthaarverlängerung,
 hochwertiges indisches Haar,
 Tressen mit 3 Clips.

Human Hair Extension,
 high-quality Indian hair,
 with wefts and 3 clips.

Extensions cheveux naturels,
 cheveux hindous de meilleure qualité,
 avec bandes et 3 clips.

Extensión de cabello natural,
 de calidad superior del cabello indio,
 tramas con 3 clips.

Allungamento in capelli naturali,
 capello indo di ottima qualità,
 fasce con 3 clip.

BROWN COLOURS
 2, 4, 6/30, 8, 10

BLOND COLOURS
 11/15,
 Honey-Mix (12A/25R/28),
 20-R, 23A/26, 26

RED COLOURS
 6/30, 30/27, 33/32B

natural HAIR CARE



EXTREM WIRKSAM
MIT SHEABUTTER UND JOJOBA-ÖL

EXTREMELY EFFECTIVE
WITH SHEA BUTTER AND JOJOBA OIL

INTENSIVE PFLEGE FÜR COLORIERTES ECHTHAAR

Durch die regelmäßige Behandlung mit BELLE MADAME Pflegeprodukten verliert die Zweitfrisur nicht ihre Form und behält für lange Zeit ihren seidigen Glanz und natürlichen Halt.

Die Pflegeprodukte der VITAL-Serie bestechen durch eine außergewöhnlich intensive Pflegeformel, in der Sheabutter mit Jojoba-Öl hochwirksam miteinander kombiniert sind. Sie stärken beanspruchtes Haar nachhaltig und geben ihm natürliche Geschmeidigkeit und seidigen Glanz.

INTENSIVE CARE FOR COLOUR TREATED HUMAN HAIR

When using BELLE MADAME care products regularly, the wig will last longer and keep its silky shine and natural hold.

The VITAL care products stand out with their exceptionally intensive care formula, which is based on a highly effective combination of shea butter and jojoba oil. They strengthen damaged hair sustainably and give naturally silky softness and shine.

SOIN INTENSIF POUR CHEVEUX NATURELS COLORES

Par l'usage régulier de BELLE MADAME produits d'entretien la perruque ne perdra pas sa forme et tiendra sa brillance et sa silhouette naturelle pour longtemps.

Les produits de soin VITAL care se démarquent avec leur formule de soin exceptionnellement intensive, qui est basée sur une combinaison hautement efficace de beurre de Karité et d'huile de Jojoba. Ils renforcent durablement les cheveux abîmés et les rendent naturellement doux soyeux et brillants.

CUIDADOS INTENSIVOS PARA CABELLOS NATURALES TINTURADOS

Usar regularmente los productos BELLE MADAME harán que su peluca de cabello natural mantenga por largo tiempo su forma, su brillo sedoso y aspecto natural.

Los productos de cuidado de la serie VITAL disponen de una fórmula de cuidado intensivo, la manera de caridad y aceite de jojoba, los cuales combinan excepcionalmente entre sí. Fortalecen el cabello dañado dando una suavidad natural duradera y brillo sedoso.

TRATTAMENTO INTENSIVO PER CAPELLI NATURALI COLORATI

Grazie al trattamento regolare con BELLE MADAME prodotti di cura speciali, la parrucca non perde la sua forma e mantiene per lungo tempo il suo setoso splendore e la sua naturale tenuta.

I prodotti per la cura della serie VITAL dispongono di una formula di cura particolarmente intensiva che combina l'efficacia del burro di karité con olio di jojoba. Questi rafforzano i capelli danneggiati e conferiscono una sostenuta naturale morbidezza e una lucentezza setosa.



BELLE MADAME
VITAL SHAMPOO
SHAMPOOING
Art. 6060

Pflegendes Shampoo. Spendet Feuchtigkeit und sorgt für leichte Kämmbarkeit. Verleiht dem Haar Geschmeidigkeit und Glanz.

Nourishing shampoo. Moisturizes and makes hair easy to comb. Gives hair softness and shine.

Shampooing soignant. Hydrate et facilite le démêlage. Rend les cheveux souples et éclatants.

Champú nutritivo. Hidrata proporcionalmente un fácil peinado. Deja el cabello suave y brillante.

Shampoo trattante. Idrata e garantisce una facile trattabilità, donando ai capelli morbidezza e splendore.



BELLE MADAME
VITAL BALSAM
BALM · BAUME
Art. 6061

Pflegender und reparierender Balsam. Glättet die Haarstruktur und gibt dem Haar natürliche Feuchtigkeit.

Nourishing and repairing balm. Smooths the hair structure and gives the hair natural moisture.

Baume soignant et régénérant. Lisse la structure capillaire et hydrate naturellement les cheveux.

Bálsamo nutritivo y reparador. Suaviza la estructura del cabello y le da la humedad natural del cabello.

Balsamo trattante rigenerante. Liscia la struttura del capello, itratandola in maniera naturale.



BELLE MADAME
LEAVE-IN
CONDITIONER
Art. 6062

Intensiv pflegender Leave-In Conditioner. Sorgt für geschmeidiges und glattes Haar, schützt vor Austrocknung und verbessert die Kämmbarkeit.

Intensive nourishing leave-in conditioner. Ensures smooth and straight hair, protects against drying out and makes hair easy to comb.

Leave-in conditioner pour soins intensifs. Assouplit et lisse les cheveux, les protège contre le dessèchement et facilite le démêlage.

Acondicionador intensivo sin enjuague. Mantiene el cabello sedoso y liso, lo protege contra la sequedad y facilita el peinado.

Leave-in conditioner ad azione trattante intensiva. Rende i capelli setosi e lisci, li protegge dalla disidratazione e ne migliora la pettinabilità.



BELLE MADAME
SOFT
SPRAY
Art. 5073

Der Silikon-Pflegekomplex versiegelt das Haar, glättet spröde Spitzen, verleiht dem Haar Geschmeidigkeit und Glanz und macht es leicht kämmbar.

The silicone conditioning complex seals the hair, smoothes brittle ends, gives the hair softness and shine and makes it easy to comb.

Le complexe de silicone lustre les cheveux, lisse les pointes cassantes, confère aux cheveux souplesse et brillance et les rend facile à démêler.

La silicona sella el cabello, suaviza las puntas quebradizas dandole brillo facilitando el peinado.

Il complesso di silicone crea uno scudo sui capelli, liscia le punte sfibrate e conferisce ai capelli morbidezza e splendore, rendendoli facilmente districabili.



BELLE MADAME
VITAL
MASK
Art. 6063

Regenerierende Pflegemaske mit Tiefenwirkung. Revitalisiert die Haarstruktur und sorgt für geschmeidiges, seidig glänzendes Haar.

Regenerating mask with depth effect. Revitalizes the hair structure and makes hair glossy and smooth.

Masque de soins régénérant avec effet en profondeur. Révitalise la structure capillaire et apporte une chevelure souple et brillante comme de la soie.

Máscara intensiva regeneradora. Revitaliza la estructura del cabello y proporciona un cabello suave, sedoso y brillante.

Maschera trattante e rigenerante ad azione profonda. Rivitalizza la struttura dei capelli e li rende morbidi e setosi.

PROFESSIONAL HAIR CARE



BELLE MADAME
HAIR SHINE
+ UV-PROTECTION
Art. 5063

Glanz- und Frisierspray mit Provitamin B5 und UV-Schutz. Spendet Feuchtigkeit, ohne das Haar zu belasten.

Shine and styling spray with provitamin B5 and UV-protection. Gently moistening without overburdening the hair.

Spray pour une coiffure brillante avec provitamine B5 et protection UV. Hydrate les cheveux sans les alourdir.

Spray de brillo de peinado con provitamina B5 y protección UV. Ptoporciona humedad sin cargar el cabello.

Spray splendente e fissante con provitamina B5 e protezione UV. Idrata, senza appesantire il capello.



BELLE MADAME
HAIR SPRAY
HAARSPRAY
Art. 5062

Haarspray für perfekten Halt und natürlichen Glanz

Hair spray for a perfect hold and natural shine.

Laque pour tenue parfaite et brillance naturelle.

Laca para una fijación perfecta y un brillo natural.

Lacca per capelli per tenuta perfetta e splendore naturale.



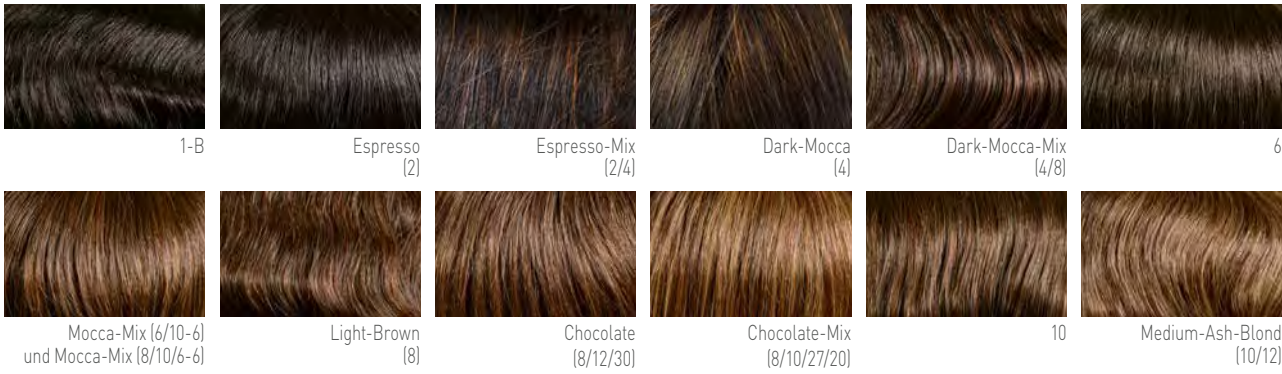
BELLE MADAME
PFLEGESET
CARE SET
Art. 6066

VITAL SHAMPOO
+
VITAL BALSAM
VITAL BALM
+
LEAVE-IN
CONDITIONER
+
HOLZBÜRSTE
WOODEN BRUSH

FARBÜBERSICHT ECHTHAAR

COLOUR CHART HUMAN HAIR

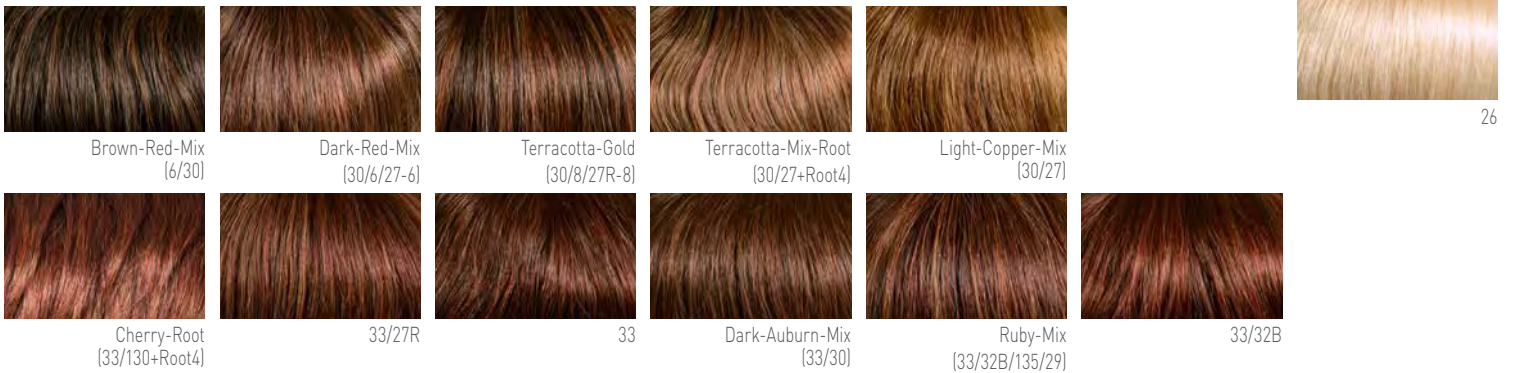
BROWN COLOURS



BLOND COLOURS



RED COLOURS



GREY COLOURS



OMBRE COLOURS



*Weißanteil aus Synthetik.
White hair made of synthetic fibre.

**Enthält 5% hitzbeständiges Synthetikhaar.
Contains 5% heat-resistant synthetic hair.

BEDEUTUNG DER FARBNUMMERN

/ Schrägstriche zwischen zwei Farbnummern: die Farben sind gemischt.

- Bindestrich zwischen zwei Farbnummern: von einer Farbe in die andere Farbe übergehend.

Leichte Farbabweichungen sind möglich, bitte zusätzlich BELLE MADAME FARBRING verwenden.

MEANING OF COLOUR NUMBERS

/ Diagonal mark between two colour numbers: colours are mixed.

- Hyphen between two colour numbers: gradual transition from one colour to the other.

Slight deviations of colour might occur. In addition please use BELLE MADAME COLOUR RING.

SIGNIFICATION DES CODES COULEURS

/ Barre oblique entre deux numéros de couleur: Les couleurs sont mélangées.

- Trait d'union entre deux numéros de couleur: passage d'une couleur à l'autre.

De légères variations de couleur sont possibles. Prière d'utiliser en addition le MÉCHIER BELLE MADAME.

SIGNIFICADO DE CODIGO DE COLORES

/ La diagonal entre dos números de colores: los colores están mezclados.

- El guión entre dos números de colores: transición gradual de un color a otro.

Son posibles ligeras variaciones cromáticas. Utilizar adicionalmente por favor, el ANILLO DE COLORES BELLE MADAME.

SIGNIFICATO DEI CODICI COLORI

/ Barre oblique tra due codici colori: i colori sono mescolati.

- Trattino tra due codici colori: da un colore all'altro.

Sono possibili lievi variazioni di colore. Utilizzare anche il CAMPIONARIO COLORI DI BELLE MADAME.

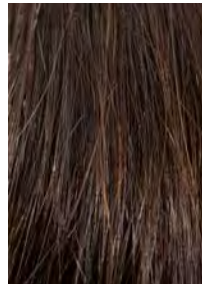
FARBÜBERSICHT COLOUR CHART

EUROPÄISCHES ECHTHAAR
EUROPEAN HUMAN HAIR

Belle Madame
European Hair Line

FERRARA

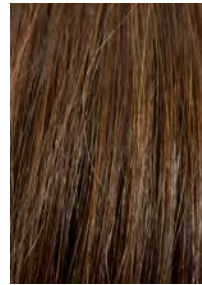
BROWN COLOURS



Medium-Brown
(4/6)



Mocca-Mix
(8/10/6-6)



Light-Brown
(8/10)



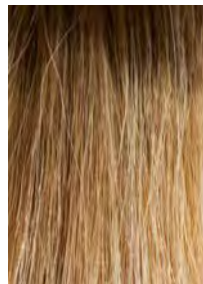
Chocolate-Mix
(8/10/27/20)

i FERRARA-FARBRING für Modelle Ferrara, Verona, Pisa und Ascona
FERRARA-COLOUR-RING for styles Ferrara, Verona, Pisa and Ascona

BLOND COLOURS



Medium-Blond-Mix
(11/15/27)



Ash-Blond-Root
(14/16/25+Root10)



Gold-Blond-Mix
(19/23A)



Champagne-Mix
(20/26)



Light-Blond
(23A/25R)

RED COLOURS



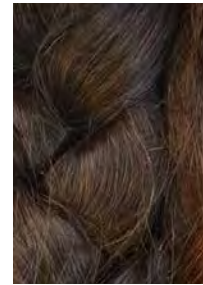
Irish-Blond-Root
(27R/28+Root27R)



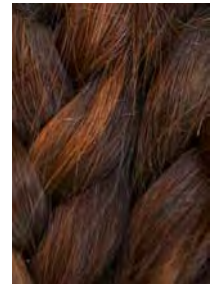
Red-Mix
(33/30/27R)

RAPUNZEL

BROWN COLOURS



Medium-Brown
(4/6)



Medium-Light-Brown
(6/8/30)

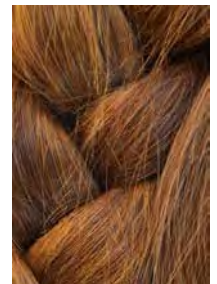


Light-Brown-Mix
(8/10/30)

BLOND COLOURS



Dark-Blond
(10/12)



Medium-Blond
(11/12/15)



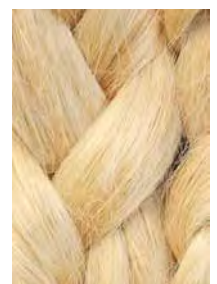
Medium-Blond-Mix
(11/12/15/20)



Blond-Mix
(15/20R/25)



Light-Blond-Mix
(19/20R/25)



Light-Light-Blond
(23A/25R/26)



BEDEUTUNG DER FARBNUMMERN

/ Schrägstriche zwischen zwei Farbnummern: die Farben sind gemischt.

- Bindestrich zwischen zwei Farbnummern: von einer Farbe in die andere Farbe übergehend.

Leichte Farbabweichungen sind möglich, bitte zusätzlich BELLE MADAME FARBRING verwenden.

MEANING OF COLOUR NUMBERS

/ Diagonal mark between two colour numbers: colours are mixed.

- Hyphen between two colour numbers: gradual transition from one colour to the other.

Slight deviations of colour might occur. In addition please use BELLE MADAME COLOUR RING.

SIGNIFICATION DES CODES COULEURS

/ Barre oblique entre deux numéros de couleur: Les couleurs sont mélangées.

- Trait d'union entre deux numéros de couleur: passage d'une couleur à l'autre.

De légères variations de couleur sont possibles. Prière d'utiliser en addition le MÉCHIER BELLE MADAME.

SIGNIFICADO DE CODIGO DE COLORES

/ La diagonal entre dos números de colores: los colores están mezclados.

- El guión entre dos números de colores: transición gradual de un color a otro.

Son posibles ligeras variaciones cromáticas. Utilizar adicionalmente por favor, el ANILLO DE COLORES BELLE MADAME.

SIGNIFICATO DEI CODICI COLORI

/ Barre oblique tra due codici colori: i colori sono mescolati.

- Trattino tra due codici colori: da un colore all'altro.

Sono possibili lievi variazioni di colore. Utilizzare anche il CAMPIONARIO COLORI DI BELLE MADAME.

VERARBEITUNG + GRÖSSEN QUALITY + SIZES QUALITE + TAILLES ELABORACIÓN + TAMAÑOS LAVORAZIONE + MISURE

SUPER-FRONT SF Neueste Ansatztechnik: großer Filmansatz kombiniert mit feinsten Knüpfung, ermöglicht stirnfreie Frisuren.

Newest hairline technique: large lace-front combined with finest knotting, enables fringeless (forehead-revealing) hairstyles.

La plus nouvelle technique de bordure devant: grande bordure invisible devant liée très finement, permettant coiffures sans frange.

Modernísima técnica de colocación: película grande combinada con un anudado finísimo que permite cortes de pelo que no se van a la frente.

Nuovissima tecnica d'innesto: grande lavorazione a innesto su pellicola combinata con annodamento raffinato, consente pettinature senza frangia.

●●●●●● Monofilament + handgeknüpft
Monofilament + hand-tied
Monofilament + implanté main
Monofilamento + anudadas a mano
Monofilamento + annodata a mano

●●●●○○ Monofilament + Tresse
Monofilament + wefts
Monofilament + bandes
Monofilamento + trama
Monofilamento + fascette

◀ Film-Ansatz im Stirnbereich
Lace-Front
Bordure invisible devant
Película en la zona de la frente
Lavorazione a innesto su pellicola nella zona frontale

INDEX *index*

PERÜCKEN ECHTHAAR WIGS HUMAN HAIR

ADRIANA RH	8
AIDA MEDIUM	36
AIDA LONG	36
ANASTASIA RH	12
ANASTASIA LONG RH	24
ANASTASIA LONG LARGE RH	33
ARABELLA RH	10
ARABELLA LARGE RH	32
CONNYY	41
DERMA-SOFT-200	40
ELEKTRA RH	30
EVITA RH	16
FERRARA	46
GILDA RH	34
GISELLE RH	22
LUCIA RH	20
MUSETTA RH	14
MUSETTA LARGE RH	33
RAPUNZEL	50
REBECCA RH	18
TOSCA	38
TOSCA LARGE	38
TRAVIATA RH	28
VERONA	44
ZITA RH	6

HAARTEILE ECHTHAAR HAIR PIECES HUMAN HAIR

ALMERIA RH	59
ASCONA	68
BARCELONA RH	65
BARCELONA LARGE RH	64
BORDEAUX	69
CONSTANCE	69
GRANADA RH	65
GRANADA LONG RH	67
MALAGA RH	66
MILANO	68
MONACO	69
NIZZA RH	57
NIZZA LONG RH	57
NIZZA LARGE RH	57
NYLON-LINE-75	62
NYLON-LINE-150	62
NYLON-LINE-250	63
NYLON-LINE-300	63
PARIS	55
PARIS LARGE	55
PISA	68
POLY-LINE-100	61
POLY-LINE-200	60
SOFT-LINE 3.5	61
VALENCIA RH	65
V-PART RH	58

VERLÄNGERUNGEN ECHTHAAR EXTENSIONS HUMAN HAIR

BEL-HAIR-SET	73
BEL-HAIR-WEFT	73
CLIP-HAIR	73
KERATIN-EXTENSIONS	71
TAPE-EXTENSIONS	71


Belle  Madame®

European Hair Line

by DENING HAIR 



FERRARA-25

 Seite 46 / Page 46

© DENING HAIR GmbH, Hamburg
www.dening.de | 05.2021