

MERDEKA & MALAYSIA DAY SPECIAL!

1 August - 30 September 2024

Hatsuyuki



HC-S32A

Ice Cube Shaver
Size (mm): 306x402x429
Power: 220V, 220W
Ice Hopper Cap (3cm Cube Ice): 35pcs
Shaving Cap (kg per min): 1.4

~~RM4,920~~ **RM3,980**

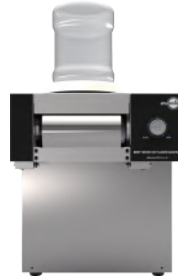
BINGSU

빙수

(korean ice shave dessert)



afterNOON



With **FREE** Mystery Gift!

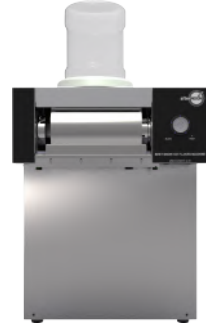
DIM-300NW

Korean Bingsu Machine

Size WxDxH (mm): 330x480x380
Power: 220V, 50/60 Hz, 1300W
Max output: 250kg/day

~~RM18,030~~ **RM16,100**

afterNOON



With **FREE** Mystery Gift!

DIM-400NW

Korean Bingsu Machine

Size WxDxH (mm): 450x560x655
Power: 220V, 50/60 Hz, 1600W
Max output: 350kg/day

~~RM21,960~~ **RM20,290**

PASTRY & BAKERY



EKF 423 NM

Electric Convection Oven with Multifunction
Size (mm): 590x695x590
Power: 220/230V, 2600W
Capacity: N°4 trays (42.9x34.5cm)
Temperature: 50 - 260 °C

~~RM4,680~~ **RM4,360**



EKF 423 NTUD

Touch Screen Convection Oven with Steam
Size (mm): 590x709x589
Power: 220/230V, 3150W
Capacity: N°4 trays (42.9x34.5cm)
Temperature: 30 - 260 °C

~~RM7,110~~ **RM6,600**



EKF 464 NTUD

Digital Electric Convection Oven with Steam
Size (mm): 784x770x637
Power: 380/400V, 6400W
Capacity: N°4 trays/grids (60x40cm)
Temperature: 50 - 270 °C

~~RM11,400~~ **RM10,600**



Panasonic

NU SC300

30L Big Cubie Oven

Size (mm): 494x476x375 H
Capacity: 30L
Temp.: 3 level - 120/150/190 °C
Function: Steam, Grill, Healthy Fry, Bake, Stew, Ferment

~~RM2,999~~ **RM2,699**



XpressChef

JET514V

High Speed Oven

Size (mm): 490 x 671 x 461
Power: 230/240V, 2900W
Usable Cavity Space: 34 L
Temp. Range: 95°-250°C (200°-475°F)

~~RM29,470~~ **RM25,000**



Cookingpro

B7B

Planetary Mixer

Agitator Speeds (RPM): 126/252/545
Voltage: 220V
Bowl Capacity: 7lt

~~RM2,520~~ **RM2,170**

LAST UNIT



Cookingpro

BX10

10L Planetary Mixer

Agitator Speeds (RPM): 108-272
Voltage: 220V/50-60Hz
Bowl Capacity: 10lt

~~RM3,030~~ **RM2,600**

LAST UNIT



FOOD PREPARATION



OPTION
50+
DISCS
AVAILABLE

robot coupe
CL50E
Cutters & Vegetable Slicers

~~RM9,510~~
RM8,000

Meal prep: 50-400 pax
Process/hr: 500 kg
Voltage: Single phase
Power: 550 Watts
One Speed: 375 rpm
Size (LxWxH): 380 x 305 x 595 mm



robot coupe
R301UD
Food Processor

~~RM9,570~~
RM9,100

Meal prep: 1-100 pax
Power: 650 Watts
Voltage: Single phase
One Speed: 1500 rpm
Size (LxWxH): 355 x 305 x 570 mm

MERDEKA & MALAYSIA DAY SPECIAL!

1 August - 30 September 2024

GCE061C

Combi Oven with Analog Control

~~RM21,070~~
RM17,544

Size(mm): 800x715x822 h
Power: 380-415V, 7800W
Tray Capacity: 6 GN1/1



LAST UNIT



*EXTERNAL HAND SHOWER INCLUDED

GCE061DW

Combi Oven with Electronic Control Panel

~~RM31,170~~
RM25,959

Size(mm): 800x715x822 h
Power: 380-415V, 7950W
Tray Capacity: 6 GN1/1



LAST UNIT



*ECOWASH + 1 POINT CORE PROBE + EXTERNAL HAND SHOWER INCLUDED

COOKING

GCE061T

Combi Oven with Touch Control Panel

~~RM35,080~~
RM29,215

Size(mm): 800x715x822 h
Power: 380-415V, 7950W
Tray Capacity: 6 GN1/1



LAST UNIT



*ECOWASH+ MULTIPOINT CORE PROBE + EXTERNAL HAND SHOWER INCLUDED

GCE101C

Combi Oven with Analog Control

~~RM25,460~~
RM21,207

Size(mm): 800x715x1062 h
Power: 380-415V, 15500W
Tray Capacity: 10 GN1/1



LAST UNIT



*EXTERNAL HAND SHOWER INCLUDED

GCE101DW

Combi Oven with Electronic Control Panel

~~RM38,740~~
RM32,266

Size(mm): 800x715x1062 h
Power: 380-415V, 15700W
Tray Capacity: 10 GN1/1



LAST UNIT



*ECOWASH + 1 POINT CORE PROBE + EXTERNAL HAND SHOWER INCLUDED

GCE101T

Combi Oven with Touch Control Panel

~~RM43,760~~
RM36,448

Size(mm): 800x715x1062 h
Power: 380-415V, 15700W
Tray Capacity: 10 GN1/1



LAST UNIT



*ECOWASH+ MULTIPOINT CORE PROBE + EXTERNAL HAND SHOWER INCLUDED



HWD-5

Electric Hot Water Dispenser/ Boiler

Capacity: 18.9L
Power: 240V, 1700W
Size (mm) : 760 Hx 240x 480

~~RM6,830~~ **RM5,580**

COMENDA
TO CLEAN. WITH CARE.



FREE Gift!
Dish rack

RB34

Undercounter Glasswasher

Washing Cycles : 90/120 sec
Rack size: 400 x 400 mm
Output: 30 - 40 racks/hr
Dimension(mm): 460 x 521 x 670H

~~RM8,950~~ **RM6,800**

COMENDA
TO CLEAN. WITH CARE.



RC07-9

Hood Type Dishwasher

Washing Cycles : 90/120 sec
Rack size: 500 x 500 mm
Output: 30 - 40 racks/hr
Dimension(mm): 625 x 720 x 1460H

~~RM18,440~~ **RM16,000**

FREE Gift!
Dish rack & Cambro Camshelving



COMENDA
TO CLEAN. WITH CARE.



RT200-30R

Single Tank Conveyor Dishwasher

Rack Production: 200 rack/hr
Tank Capacity: 80L
Feeding direction:
Right to Left Total Length: 1150 mm

~~RM62,620~~ **RM56,640**

LAST UNIT

FREE Gift!
Dish rack & Cambro Camshelving

