

# FIS

## SCOTTISH AWARDS 2024 THE WINNERS

The FIS Scottish Awards Lunch, held at the Voco Grand Central Hotel, Glasgow, on 20 September, celebrated the outstanding projects completed by FIS members across Scotland - with the help of ex-footballer and Sky Sports pundit Chris Sutton as guest speaker.

[thefis.org](https://thefis.org)

**FIS**  
Olton Bridge  
245 Warwick Road  
Solihull  
West Midlands  
B92 7AH

+44(0)121 707 0077  
[info@thefis.org](mailto:info@thefis.org)

/ We are UK Focused /



Evolved from Armstrong Ceiling Solutions, our team can offer hands on expert support, product knowledge and environmental guidance. As the UK's only major ceilings manufacturer, we'll deliver your order the very next day - **anywhere in the UK!**\*

 **zentia** Above all, **you**

\*Order before 2pm

# JUDGES' COMMENTS

**“Yet again it was an absolute pleasure to visit and formally judge such a variety of projects in different sectors throughout Scotland. We have been highly impressed by the level of projects submitted for consideration and enjoyed meeting the membership companies, clients and architects involved.**

It was evident how much passion the companies had for the projects, their teams and their companies. An increased number of entrants and new members taking up the challenge of the awards enabled wider categories with silver and gold recognitions.

We noted an increased emphasis on new materials and techniques, along with a stronger focus on sustainability. We hope this will continue with materials, products, reuse, recycling and how sites are dealing with waste.

Also evident was a new focus on apprenticeships and dealing with the issue of continued skills shortages in many trades.

All entrants should be very proud of what they and their teams have achieved in delivering such excellent work in demanding projects. It is always difficult to pick winners – and scoring this year was tight. However, supported by the FIS team, judging worked well. Each project was scored, and comments noted on numerous aspects of the project from start to finish, followed by stiff discussions and final individual project assessments.

We hope that seeing these projects will encourage more of you to enter projects for next year's awards. This is a fabulous opportunity for you to demonstrate your quality to current and future clients and to celebrate what you can deliver.

In addition, we would like to commend materials suppliers and manufacturing members for their continuing development in quality, environmental and sustainability aspects, working with our contracting members and the architecture and design community in so many ways, from aesthetics, sound and fire to structure. Our contracting members need that support, which you readily give to them to meet project needs. Many thanks.”

STEVE NEILSON AND JAMES PARLOUR



**EASY TO DO  
BUSINESS WITH.**  
DIFFICULT TO  
LIVE WITHOUT.

Our local branches offer an extensive range from all the leading suppliers you trust. But a business is nothing without its people and we're no different. Our friendly knowledgeable team are ready to support you with even the most complex of projects, while our dedicated in-house technical team are on hand to provide assistance with building requirements. Enjoy a hassle-free trading experience with a distributor that genuinely talks your language. Now that's an easy choice.

[minsteronline.co.uk](http://minsteronline.co.uk)

**MINSTER**



**THERMAL  
INSULATION**



**DRY LINING**



**FIRE  
PROTECTION**



**CEILINGS**



**PARTITIONS**



**ACOUSTICS**



**ROOFING**

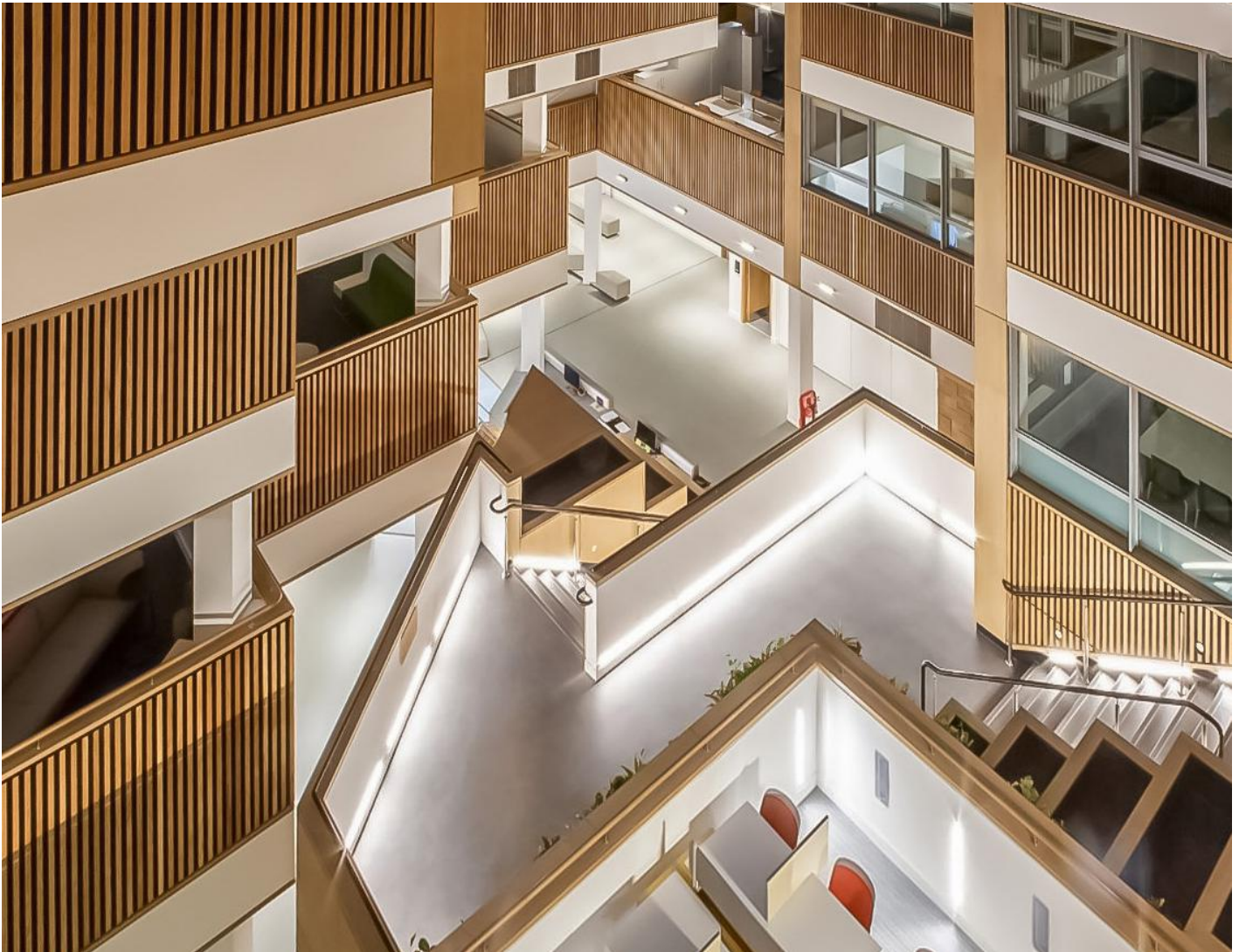


**EXTERNAL  
FAÇADES**



**FLOORING**

PROJECT OF THE YEAR  
**Roskel Contracts**



CONTRACT  
**Clarice Pears Building,  
University of Glasgow**

ARCHITECT  
**Atkins**

**THE JUDGES SAID:**

**Among all category-winning projects, the atrium work within the Clarice Pears Building by Roskel Contracts presented a particularly unique combination of challenges, high-level complexity, exceptional quality of finishes and a staggering overall impact.**

Succeeding in all areas, Roskel provides a benchmark for excellence in the delivery of construction elements that define and enhance the use, appeal and safety of users in this space.

See page 14 for full details.

CATEGORY  
SPONSOR



# INTERIOR FIT-OUT

## Scotwood Interiors



CONTRACT  
**Rabbie's Tours head office, Edinburgh**

ARCHITECT  
**Form Design Consultants**

**Scotwood completed this Cat B fit-out project on the fourth floor of 22 Rose Street, Edinburgh, in 10 weeks. The 6,000 sq ft office space includes extensive glazing, with breathtaking views of Edinburgh old town and the castle and an extensive private roof terrace.**

The programme involved the full fit-out of a recently completed Cat A fit-out – including M&E alterations, new glazed and drylined partitions to form meeting and breakout spaces, and bespoke joinery for a fully fitted kitchen, desking in open-plan offices and seating throughout.

Scotwood used Ocula Glazing for soundproofed, full-height glazing frontages to the newly formed meeting spaces. Existing services were adapted to allow for comfort cooling and ventilation to all enclosed areas, and feature lighting was added to various areas.

New full-height sound partitions required a significant amount of scribing to accommodate existing services in the ceilings.

Working with the client, digital prints, manifestation and neon signage were designed to create a full branding package. New flooring, decorations, curtains and blinds completed the fit-out.

The project was not without its challenges. The site was adjacent to a Premier Inn, which meant morning noise levels had to be kept to a minimum. And the client's furniture supplier went into administration days before the final install – but Scotwood worked with the client and design team to reprogramme the moving-in dates and final connections.

### THE JUDGES SAID:

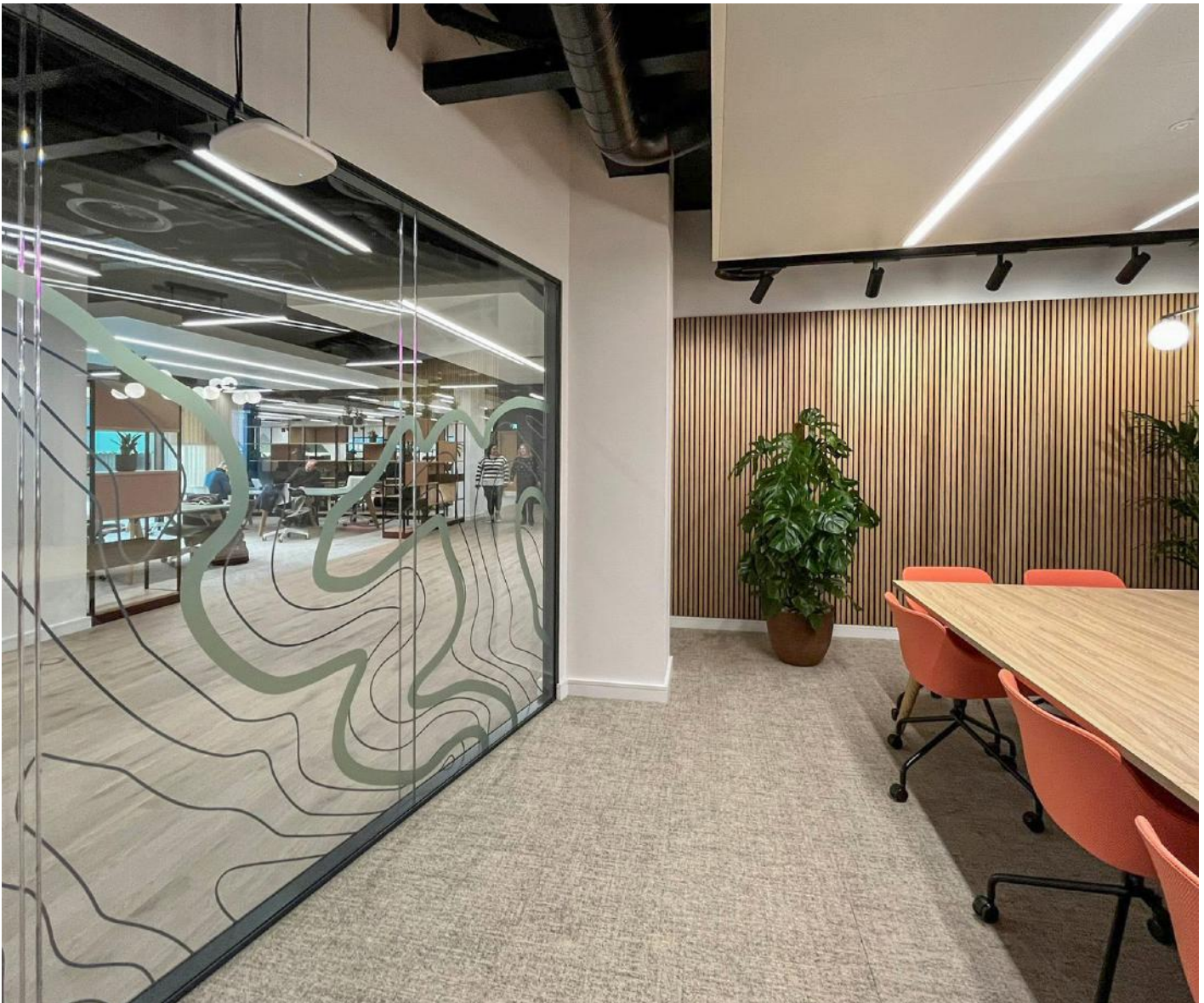
Scotwood expertly managed a group of subcontractors within a challenging programme and logistics environment to form a high-quality space that has dramatically improved the client's use of the premises.

CATEGORY  
SPONSOR



[scotwood.com](https://www.scotwood.com)

INTERIOR FIT-OUT  
**Scotwood Interiors**

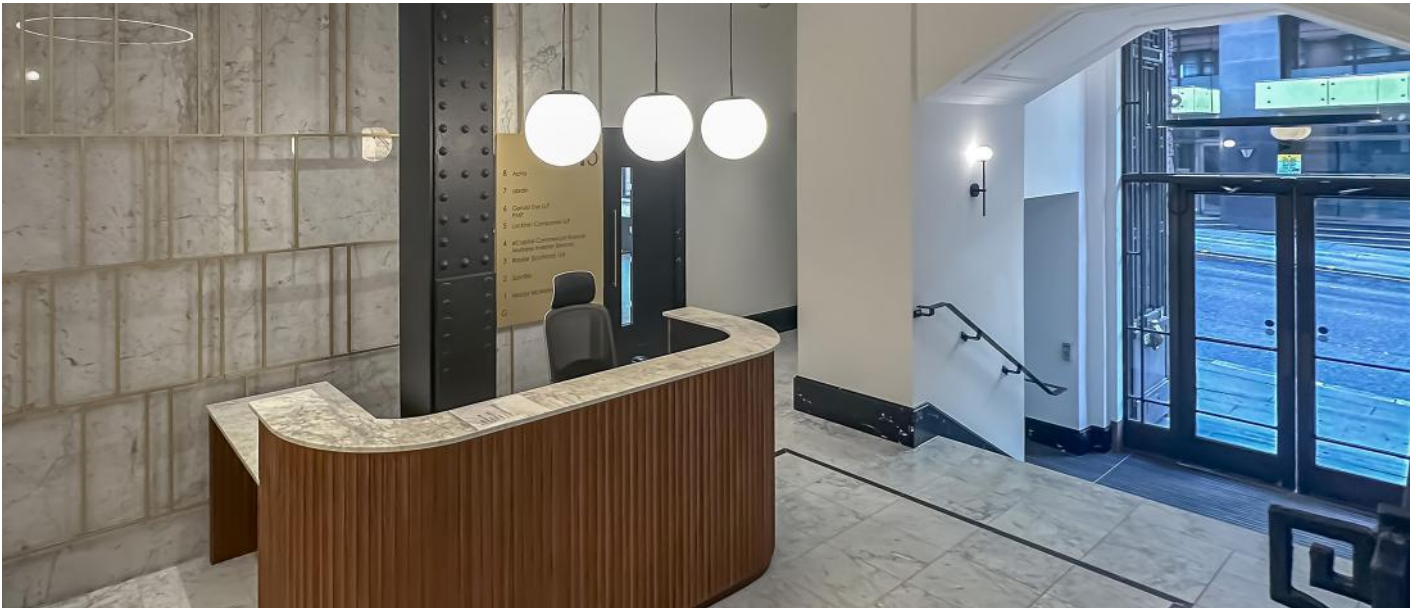




**CONSTRUCTION SHIELD**  
ASSURED

**INTERIOR FIT-OUT**  
**proud category sponsor**





CONTRACT  
**Foyer refurbishment,  
Glasgow**

**WMR was commissioned to undertake the refurbishment of the communal foyer of this eight-storey, B-listed office building in Glasgow's city centre, with a brief to complement the building's heritage.**

Works were undertaken over an initial six-week programme, but that was extended to eight weeks following variations. The contract involved the removal of internal partitions, ceilings and doorsets to construct an open-plan foyer. A new fire refuge zone was constructed and the existing fire detection system altered to suit the new layout.

The cladding to the existing column in the centre of the foyer was removed to reveal an original structural beam, which was extensively overhauled, including new passive fire protection, to leave exposed as a feature.

In addition, 20mm marble was imported from Italy to create a feature wall behind the reception, as well as a new marble floor, inlay and stairs. The recessed ceiling was constructed to mirror the marble inlay and create a sense of symmetry. The perimeter of the foyer was covered with contrasting black marble stair stringers, skirtings and facings. A new reception and a DDA (Disability Discrimination Act) compliant desk were constructed using Abodo cladding with marble desktops.

**THE JUDGES SAID:**

This refurbished foyer made great use of marble flooring, wall cladding and stairs. A new recessed ceiling, feature wall and reception desk were executed immaculately. The restoration work on an original steel column enabled a historic centrepiece to shine, tying the scheme together to create a clean, welcoming environment that showcases the heritage of the property.

CATEGORY  
SPONSOR



# Carter Ceilings



CONTRACT  
**Wallyford Learning  
Campus, East Lothian**

ARCHITECT  
**JM Architects**

**Rosehill High School on the Wallyford Learning Campus provides a broad range of services to the local community: library and learning resource centre, leisure facilities and multi-generational community and education spaces.**

Carter Ceilings was contracted by Morrison Construction to supply and install suspended ceilings, acoustic wall panelling, acoustic ceiling baffles and timber wall panelling packages.

Various plasterboard roof lights and perimeter margins within the corridors bordered coloured suspended ceilings throughout the building. Each area of the school was brought to life by the different colour schemes to provide an attractive work environment for students. Acoustic ceiling baffles were installed to large, open areas to minimise the transfer of sound throughout the building.

The project's complex installations provided many challenges. The installation of acoustic panels, baffles and rafts had to be aesthetically pleasing to the end user, so Carter worked with Morrison and JM Architects at each stage of the build to ensure the setting out of all trades met the design team's vision.

The transitions of the suspended grid ceilings, plasterboard linings, metal profile trims and timber panelling products provided by various manufacturers, combined with the integration of M&E services such as recessed linear lighting, also required a lot of pre-planning. And various elements required working at height over complex areas in the atrium, large assembly and learning spaces.

## THE JUDGES SAID:

The ceiling scheme comprised a vast number of suspended ceiling types, systems and colour variants and a variety of acoustic wall panelling and baffle types. Carter Ceilings delivered this scheme to an exceptionally high quality of finish and managed the technical challenge of the different installation methods with model competence management.

CATEGORY  
SPONSOR



SPECIALIST INSTALLATION - UNDER £1M  
**Carter Ceilings**



SPECIALIST INSTALLATION - UNDER £1M

# Glasgow Ceilings



CONTRACT  
**Newmains and St  
Brigid's Community Hub,  
Lanarkshire**

ARCHITECT  
**BDP**

**Newmains and St Brigid's Community Hub brings together Newmains Primary School, St Brigid's Primary School, a pre-school nursery and a range of community-focused facilities into a unified, sustainable campus.**

The theme of nature and nurture is used throughout, including a new treehouse. The timber tree is the focal point of the multispace area, with a slide wrapped around the trunk, and its branches and leaves incorporated into the timber ceiling that runs perpendicular to the main timber ceiling.

The ceiling is cut into sections of 75mm wide 18mm birch plywood, with the plywood fitted onto a T-bar section suspended from the roof. Glasgow Ceilings had to design the full system as there was no proprietary ceiling system to match the requirements of the design or budget.

The ceiling was installed on a slope, with each section of timber fixed down through the T-bar with four fixings every 600mm. The tree section was installed level from the above sloping ceiling. Access for the installation was challenging due to the stairs and the multi-use core section. Bespoke access hatches were made for the ceiling using timber slats, and sections of the timber slats were turned on their side for air flow and ventilation.

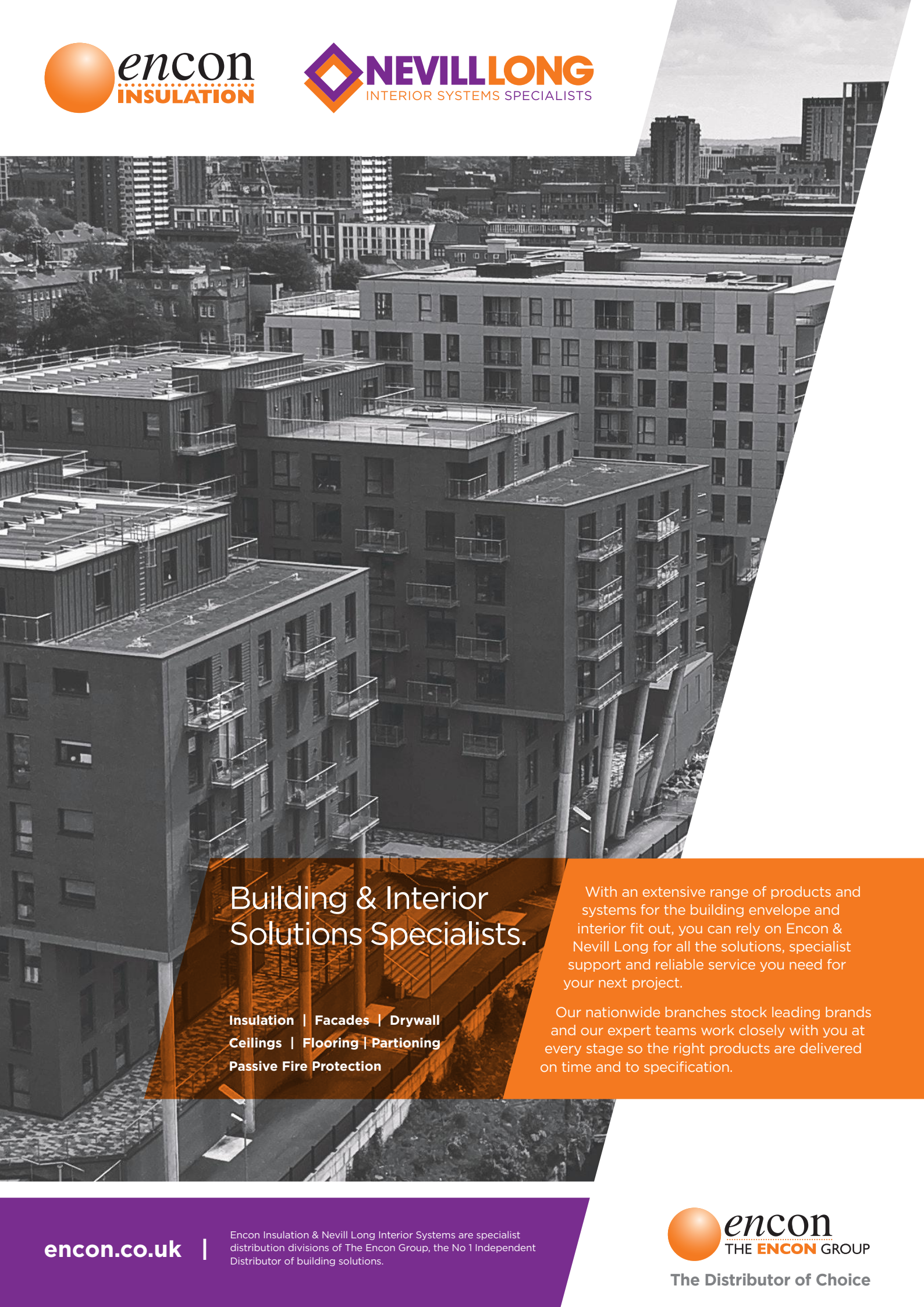
## THE JUDGES SAID:

The design of the central space demanded a fully bespoke approach to the ceilings. While standard ceiling solutions were used in the spur areas to great effect, the bulk of the ceilings were formed from a fully bespoke linear solution that enabled the large and impressive staggered central feature ceiling to meet specification.

CATEGORY  
SPONSOR



[glasgowceilings.com](http://glasgowceilings.com)



## Building & Interior Solutions Specialists.

Insulation | Facades | Drywall  
Ceilings | Flooring | Partioning  
Passive Fire Protection

With an extensive range of products and systems for the building envelope and interior fit out, you can rely on Encon & Nevill Long for all the solutions, specialist support and reliable service you need for your next project.

Our nationwide branches stock leading brands and our expert teams work closely with you at every stage so the right products are delivered on time and to specification.

[encon.co.uk](http://encon.co.uk) |

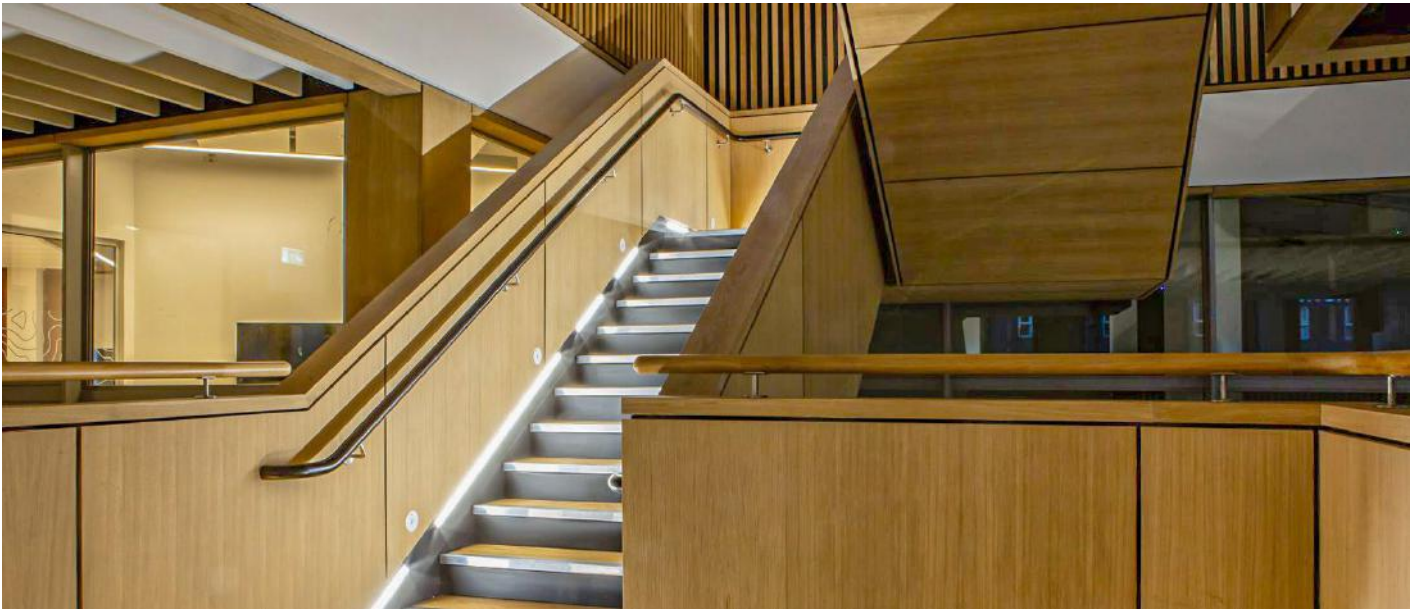
Encon Insulation & Nevill Long Interior Systems are specialist distribution divisions of The Encon Group, the No 1 Independent Distributor of building solutions.



The Distributor of Choice

SPECIALIST INSTALLATION - OVER £1M

# Roskel Contracts



CONTRACT  
**Clarice Pears Building,  
University of Glasgow**

ARCHITECT  
**Atkins**

**Part of a £4.8m project, this large package included the supply and installation of bespoke joinery works and supporting SFS within the central atrium of the new Clarice Pears Institute of Health and Wellbeing building in the University of Glasgow's Western Campus.**

It features acoustic infill panelling around the perimeters, forming bands and vertical arrangements on multiple floor levels, supported by designed Metsec SFS framing. Full-height column encasements in FR MDF American oak veneered panelling and solid oak edgings form break points at various corners, enhancing the appearance across the floors.

Balustrading of solid American oak sections and profiles provide further detailing, blending with the look of the atrium and culminating in a feature staircase lined with oak veneered panelling and handrails. The scope of works also included large planter details constructed from oak veneered panelling next to the main reception and living wall.

Installers in the central atrium used a complex birdcage scaffold, working between floors and close up to the installation, restricting their view of the area until the end. Work for multiple squads on the main support frame also proved challenging due to the irregularity and tolerances involved. And the atrium varied significantly on each floor, with overhangs, recesses and acute corners broken up by continuous vertical internal/external column encasements formed from a range of oak products but requiring a uniform finish.

## THE JUDGES SAID:

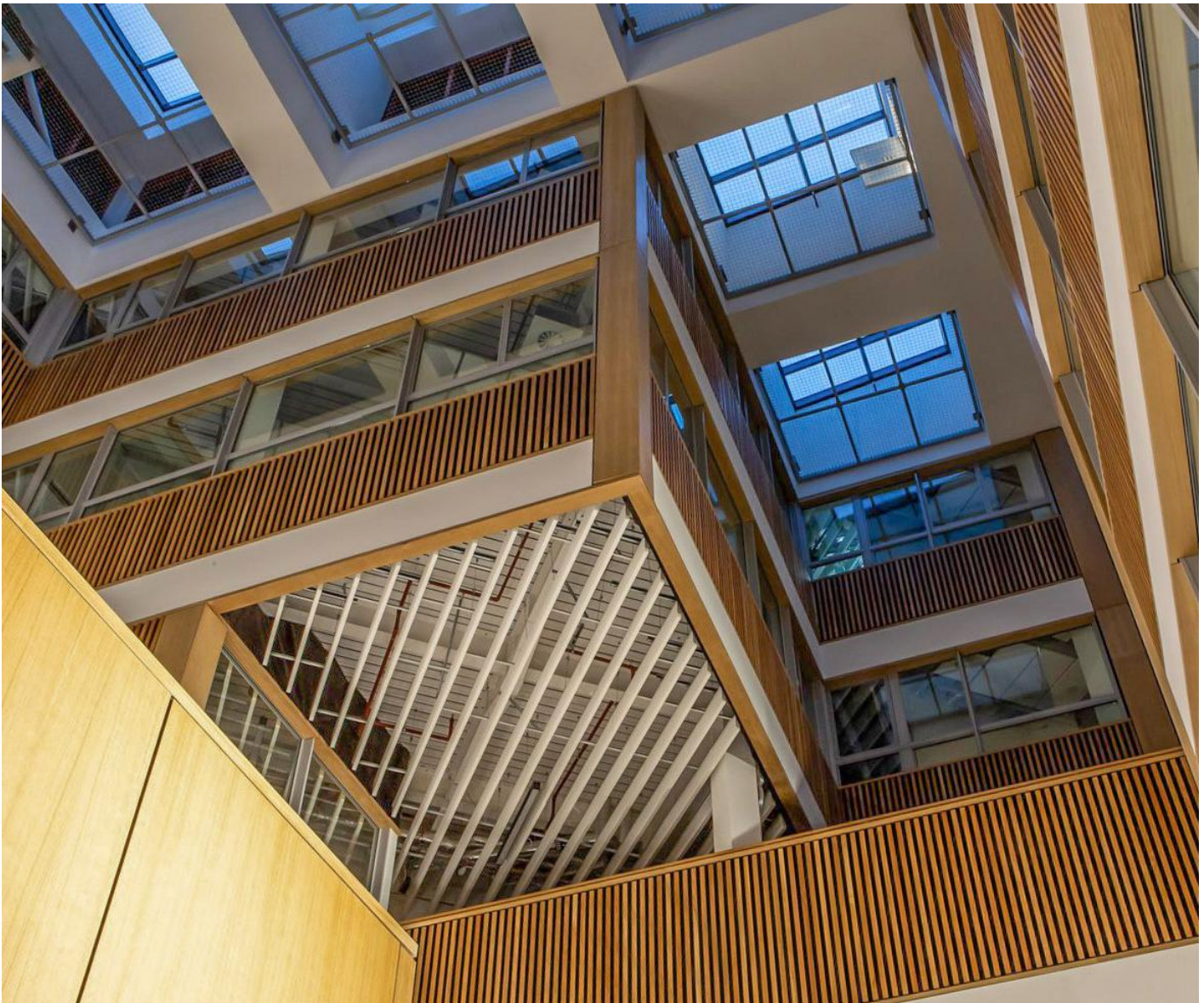
The stunning central atrium constitutes multiple overlapping and cantilevered breakout areas lined by SFS and with bespoke joinery. Installation involved design challenges for the cantilevered SFS, logistical challenges around removing the scaffold, and enormously complex alignments and tolerances between independently supported elements within the open space.

CATEGORY  
SPONSOR



[roskel.co.uk](http://roskel.co.uk)

SPECIALIST INSTALLATION - OVER £1M  
**Roskel Contracts**



SPECIALIST INSTALLATION - OVER £1M

# CCL Interiors



CONTRACT  
**PLATFORM\_ at  
Central Quay,  
Glasgow**

ARCHITECT  
**Keppie**

**CCL Interiors installed all the plasterboard partitions, suspended ceilings, fire beam encasements and soffit linings to this award-winning build-to-rent scheme developed by PLATFORM\_ and overseen by Graham Construction.**

The building, one of the tallest in Glasgow at 60m, has transformed derelict land into 498 new homes in four blocks ranging from six to 20 storeys.

The works were undertaken to the apartments, circulation areas, retail areas and amenities, providing residents with a gym, a cinema room, group dining rooms, roof terraces and a landscaped courtyard.

CCL adjusted the sequence on site by initially installing corridors to allow M&E contractors to carry out the corridor and core first fix ahead of the room sequencing. This benefited the programme for all parties on site, allowing works to progress in an organised manner.

To help maintain clear and safe site working conditions in a tight 48-week programme, CCL also used backshift labour patterns. To address loading issues on site, and working to one hoist, the CCL operations team worked closely with the main contractor and other subcontractors to accommodate the loading out and removal of waste from the floor plates.

## THE JUDGES SAID:

This extensive drylining, ceilings, column and beam encasements package was expertly delivered by CCL. Complex sequencing, logistics and performance requirements were deftly managed by a highly competent site team, allowing drylined elements to be handed over on time, to a high standard, within the regulatory strictures of a modern residential high rise.

CATEGORY  
SPONSOR



[ccl-interiors.com](http://ccl-interiors.com)



# New Entrants & Apprenticeships simplified for you



Are you interested in taking on a new trainee or apprentice, but unsure where to start?

Your local **CITB New Entrant Support Team** are here to help every step of the way.

## 1. Recruitment

We'll signpost you to useful employment resources and help advertise your apprenticeship vacancy on **apprenticeship.scot** to attract potential candidates and let them find you – all for free. We'll help you find the right candidate for the role.

## 2. CITB Funding

We'll make sure you're set up to receive CITB apprenticeship grants:

- Attendance grant: £2,500 (per year, per apprentice)
- Achievement grant: £3,500 (on successful completion of the apprenticeship).

## 3. Admin

We'll support you with your online Y-NET apprenticeship grant account.

## 4. Retention

On successful completion of the apprenticeship or training, we'll offer guidance that will support you to continue to upskill your newly qualified staff member.

From the  
NEST Team



Find out more:



Get in touch  
**newentrantsupport**  
**teamscotland**  
**@citb.co.uk**

# APPRENTICE OF THE YEAR

## Ethan Gandy



...Ethan is “polite and humble, acknowledging he is still in the apprentice stage of his career”.



ROLE  
**Apprentice ceiling installer**

EMPLOYER  
**Brian Hendry Interiors**

**Ethan joined Brian Hendry as a ceiling installer last September at the age of 26, having spent several years in the retail and food sector. Credited by colleagues for his “commitment to personal development and progression through his unwavering dedication to his work and college education”, Ethan is also applauded by the Glasgow Council work support programme overseeing him.**

Ethan has completed 12 training courses and has also recently been reviewing best practice guidelines for installation, maintenance and access into suspended ceilings. His line manager says: “Ethan is as steady as a rock, tackling his assignments with effortless determination. When given a task, he not only focuses on his own responsibilities but also seeks opportunities to assist others.”

His dedication is exemplified by an incident described by a colleague at a project launch elsewhere in the city: “Ethan voluntarily transported essential equipment from his site to the distant job site, then returned and resumed his duties without hesitation.”

Colleagues also say Ethan is “polite and humble, acknowledging he is still in the apprentice stage of his career”. His unique blend of personal qualities “truly set him apart from others”, they say, and “no matter where he’s assigned, Ethan consistently arrives on time”.

### THE JUDGES SAID:

Ethan did not follow the traditional route into construction, but he created opportunities to allow that pathway to open for him. Now he is becoming qualified, he is very much embracing his craft and going over and above – not just to learn his craft but to excel in it.

CATEGORY  
SPONSOR



# Ian Young



**“He stands out as a source of inspiration to a multitude of construction professionals.”**

**ROLE**  
**Installation School**  
**Manager**

**EMPLOYER**  
**Zentia**

**An all-round nice person, Ian leaves no question left unanswered, bestowing on all Installation School participants one-to-one attention and a wealth of industry knowledge. He is highly regarded and respected within the trade - a truly inspirational professional.**

Ian has worked in the ceilings sector for more than 40 years, starting with Armstrong (now Zentia) in 1984. He has had many responsibilities, from regional sales manager for Scotland and the North East to his current role as manager of Zentia's Installation School - a position he initially took on in 2014.

Ian retired in 2020, but returned to maintain continuity of training at the Installation School - earning Zentia an FIS award for excellence in training in November 2023.

Ian organises and delivers the highest standards of training to a varied audience, from office-based internal staff to the most proficient ceiling supervisors. Ian himself has trained thousands of built environment professionals over the years.

The many, many testimonials published online on LinkedIn and other networks speak volumes about Ian's professionalism. He stands out as a source of inspiration to a multitude of construction professionals.

# THE BEST BUSINESSES FOLLOW FIS BEST PRACTICE GUIDES



# FIS

FINISHES & INTERIORS SECTOR

Join FIS for access to all these guides and more!

[thefis.org/join-now](http://thefis.org/join-now)