

Kama'aina Kids

Hawaii's Non-Profit Enrichment & Education Professionals



Serving Kids Since 1987

After School Care • Preschool Programs
Infant & Toddler Programs • Intersession Programs • Day Camps



Board of Directors

Ralph Goto
Kathy Bryant
Stephanie Doughty
Sheila Anne Ebert
Becky Gustafson



Jennifer Herring
Kevin Matsuda
Tom McDonald
Dana Vela

Aloha from the Board!

At Kama'aina Kids we are committed to a process of constant improvement through training and accreditation of our employees and staff to provide the best curriculum to enrich the lives of Hawai'i's children and their families.

Throughout these pages, we will share more about the people, programs and places we serve. From infants to teens, from Hilo to Lihue, our ongoing education and enrichment programs serve nearly 7,000 children and families on a daily basis with dedication, safety and innovation.

MISSION STATEMENT

To serve children, families and our communities by providing ongoing quality education and enrichment programs to help build a sense of Self, Community and Environment.



Our President's Message



Our people, almost 700 of them, make the difference! From all walks of life, the one commitment that is universally shared is their commitment to the children we care for. Our programs are committed to excellence. Teaching from nationally recognized curriculums and setting the goal to accredit all of our programs sets the stage for a positive environment for all that we serve. Our places are unique and diverse. From free standing preschool buildings to beach walks along popular camping grounds, our classrooms and places allow children to learn by doing.

I invite you to learn more about Kama'aina Kids and what sets us apart!

VISION STATEMENT

WHAT WE DO

WHY WE DO IT

HOW WE DO IT

IMPACT
AND ENRICH
FAMILIES

TEACH A SENSE OF
SELF, COMMUNITY
AND EARTH

PEOPLE
PROGRAMS
PLACES

Our History



Kama'aina Kids began its humble beginning at He'eia State Park in 1987 with 45 children in an after school program. Ray Sanborn, the cofounder of Kama'aina Kids, created the beginning of a dream which was to provide recreational and environmental education programs for the children of Hawaii. For the next 5 years at He'eia State Park, both the number of children and the extent of the programs grew. Today Kama'aina Kids is a multi-site childcare company operating over 100 locations and serving over 6,000 families each day. With approximately 700 employees to help carry out our mission, Kama'aina Kids continues to provide positive experiences for children, support for their families and a reliable, consistent and professional place to work for its employees.

Our Community Partners

Kama'aina Kids works closely with many organizations and agencies within the state to provide a wide range of experiences for children.

- Aloha United Way
- Bishop Museum
- Childcare Business Coalition
- City & County of Honolulu
- Department of Education
- Department of Human Services
- Department of Land & Natural Resources
- Hawaii Visitors and Convention Bureau
- Wet 'N' Wild Hawaii
- Sea Life Park
- Paepae o He'eia
- Activities & Attractions Association of Hawaii
- Parents and Children Together
- Hawaii Children & Youth Day



Foundations that support our mission

Kama'aina Kids has been supported through the years by a variety of foundations, families and friends that believe in the importance of high quality programs for children. The foundations listed below have supported the company with money for capital improvements, the development of new programs, the purchase and training for our new curriculum and scholarships for tuition:

- Alexander & Baldwin Foundation
- Atherton Family Foundation
- Bank of Hawaii
- Combined Federal Campaign
- First Hawaiian Bank
- Fred Baldwin Foundation
- G. N. Wilcox Trust
- Harold K. L. Castle Foundation
- Harry & Jeanette Weinberg
- Hawaii Community Foundation
- Hawaiian Electric
- James & Abigail Campbell
- Kamehameha's Pauahi Keiki Scholars
- McInerny Foundation
- Samuel N. & Mary Castle Foundation
- Target
- Give Aloha, Foodland





Over 100
Locations Statewide
From Lihue to Hilo...

Preschool
School Age

We impact the lives of kids and
their families in your community



Preschool

Our People

Our people make the difference. Preschool teachers and support staff arrive each day ready to make a difference in the lives of our youngest members of Kama'aina Kids. Through the implementation of the nationally recognized Learning Beyond Paper, each classroom is arranged to allow the minds of children the opportunity to explore and investigate their surroundings. In addition, our people have made a commitment to pursue accreditation through the National Early Childhood Program Accreditation (NECPA) which is the ultimate seal of approval.

Our Programs

Understanding that children have varying needs based on their age and stage of development, the Preschool Division offers the following programs:

- Infant & Toddler (6 weeks to 24 months)
- Two Year Old
- Three To Five Year Old
- Partnership with PACT

Our Places

Kama'aina Kids offers preschool programs in a variety of settings in order to ensure that we are in the neighborhoods where parents work and live. This ease of finding the location that best meets a family's needs allows parents to maximize their time with their child. Some locations are far from the hub of downtown and others are close to the working communities we serve. Wherever we operate, our first goal is to build environments that are safe. Each site is licensed by the Department of Human Services and our stated goal is to exceed all regulations by providing quality programming with trained staff while pursuing accreditation at each facility.





Safe

Nurturing

Educational



School Age

Our People

Our school age staff are flexible, friendly and fun! Through numerous and diverse trainings, our people set out to support the children, schools and communities by providing experiential learning, homework time, educational and fitness needs and exciting opportunities! Making sure that these children are in an environment that is safe and enriching allows parents to finish their work day in peace. Our partnerships with both the Department of Education schools where we operate as well as the parents of the children we serve are the foundation for our programs. We pursue accreditation and staff development through the National Afterschool Alliance and the American Camp Association.

Our Programs

Recognizing that all children need a safe environment during out-of-school times, we offer the following programs which are based on the needs of both families and children:

Intersession Day Camps

A+

After School Care

After Summer School

Before School Care

Holiday Care

Summer Plus

Summer Day Camps



Our Places

The State of Hawai'i is our "classroom" for school-aged children. We can operate quality programs for school-aged children in a variety of places. We have beautiful beaches, coves and bays. We have sites to see and parks to explore. For a busy working parent, having Kama'aina Kids available to help their child explore life is a great benefit. For the child, having exciting and fun things to do while out of the structured school time builds friendships, dreams and the core foundation of a well adjusted youth. Our programs awaits the curious mind, and with the help of our staff, bring all these opportunities alive.



Safe
Exciting
Enriching



SUPPORTING THE COMMUNITY

Children & Youth Day

In 1994, the Hawai'i State Legislature and Governor established Children and Youth Day (CYD) in Hawai'i as the first Sunday of every October to celebrate and honor our children and youth and the special contributions they make to our community. After much community discussion, Act 30 of 1997 was passed to dedicate the entire month of October as Children and Youth Month in Hawai'i. As of 2016, Kama'aina Kids has served as the Administrator for CYD and oversees all administrative duties.



Culture that Promotes Volunteer Work

Kama'aina Kids promotes a culture that encourages volunteer work and giving back among our employees. This experience provides many opportunities for positive engagements in our communities that fosters a sense of self and environment.



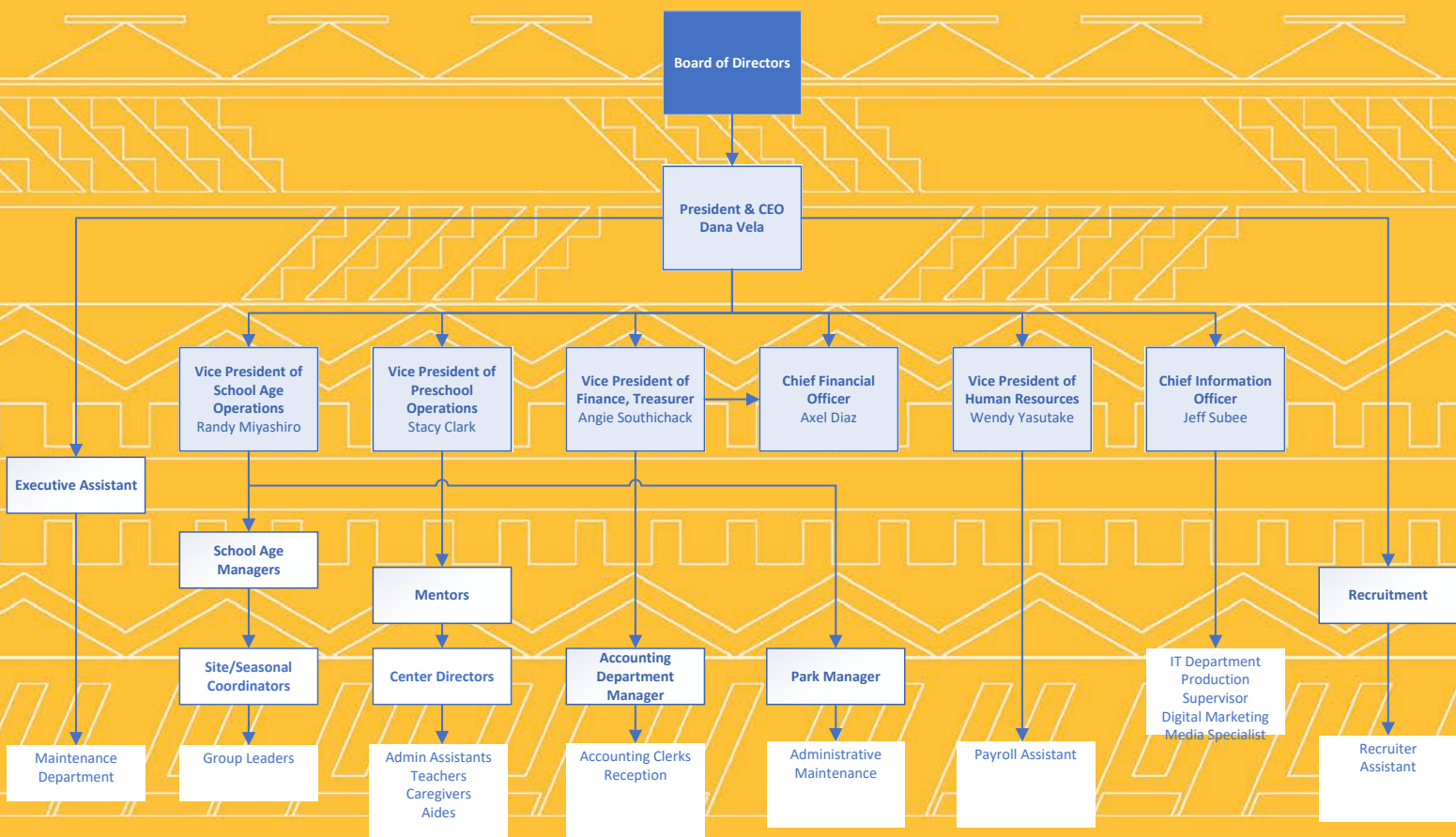
Kama'aina Kids Scholarships

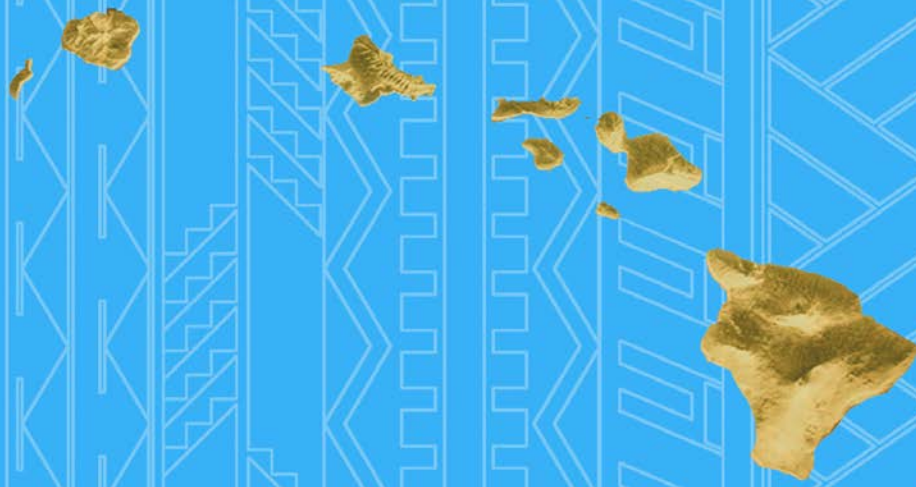
Kama'aina Kids is committed to providing opportunities for children to experience a quality program. We conduct various fundraisers to offer eligible families scholarships for a variety of our services, including infant and toddler, preschool, and day camps. By making scholarships available, we seek to supplement other financial assistance institutions to broaden the support families in need can find. Kama'aina Kids is able to support this aid by conducting fundraisers that directly support the keiki in our programs.



Kama'āina Kids

ORGANIZATIONAL CHART





Kama'aina Kids is honored to have been recognized as a "Top Workplace" in both the Regional and National listings for 2024. The list is based solely on employee feedback gathered through a third-party anonymous survey measuring several aspects of workplace culture, including alignment, execution, connection, leadership, values and communications.

KAUAI Afterschool Programs

- Eleele A+
- Hanalei A+
- Kalaheo A+
- Kapaa A+
- Kaumualii A+
- Kekaha A+
- Kilauea A+
- Koloa A+
- Wilcox A+

OAHU Preschools

- Aikahi
- Alewa Heights
- Enchanted Lake
- Ewa Preschool @ CFS
- Hawaii Kai
- Honolulu
- Judd Street
- Kalaeloa
- Kaneohe
- King Street
- Maili on St. John's Road
- Milliani Tech Park
- Moanalua
- Pearl City
- St. Mark's
- St. Timothy's

OAHU Afterschool Programs

- Aiea A+
- Ala Wai A+
- Ben Parker A+
- Enchanted Lake A+
- Heeia A+
- Hickam A+
- Hokulani A+
- Jefferson A+
- Iliahi A+
- Kahala A+
- Kahaluu A+

- Kainalu A+
- Kaleiopuu A+
- Kalihi A+
- Kalihi Uka A+
- Kamaile A+
- Kamakau PCS A+
- Kamiloiki A+
- Kaneohe A+
- Kanoelani A+
- Keoneula A+
- Koko Head A+
- Laie A+
- Liholiho A+
- Lunalilo A+
- Makalapa A+
- Mary Star of the Sea ASP
- Mokapu A+
- Nanaikapono A+
- Nanakuli A+
- Pearl Harbor A+
- Pearl Harbor Kai A+
- Pearl Ridge A+
- Salt Lake A+
- St. Louis ASP
- St. Theresa ASP
- Voyager A+
- Waikiki A+
- Waimalu A+
- Webling A+
- Wheeler A+

MAUI Preschools

- Kahului
- Lahaina Infant & Toddler Program
- Makawao
- Piilani

MAUI Afterschool Programs

- Kahului A+
- Kamalii A+
- King Kamehameha III A+
- Princess Nahienaena A+
- Paia A+
- Pukalani A+
- Waihee A+
- Wailuku A+

HAWAII Afterschool Programs

- Connections A+
- DeSilva A+
- Haaheo A+
- Hilo Union A+
- Holualoa A+
- Honaunau A+
- Hookena A+
- Ka Umeke Kaeo A+
- Kahakai A+
- Kalaniana'ole A+
- Kamehameha Hawaii ASP
- Kapiolani A+
- Keaukaha A+
- Keonepoko A+
- Konawaena A+
- Pahoa A+
- St. Joseph Hilo ASP
- Waiakea A+
- Waiakeawaena A+
- Waikoloa A+

