



Giant dugong sculpture & rockwork for Dreamtime Cultural Centre





Preserving and sharing cultural heritage

For the Torres Strait Islander complex at the Dreamtime Cultural Centre near Rockhampton, Natureworks designed and built an enormous dugong sculpture.

We also built artificial rockwork for the Centre, creating a natural experience in harmony with the environment.

About the Centre

The Dreamtime Cultural Centre is on land originally occupied by the Darambul Tribe. The centre was established in 1988, and a Torres Strait Islander Complex opened in 1992.

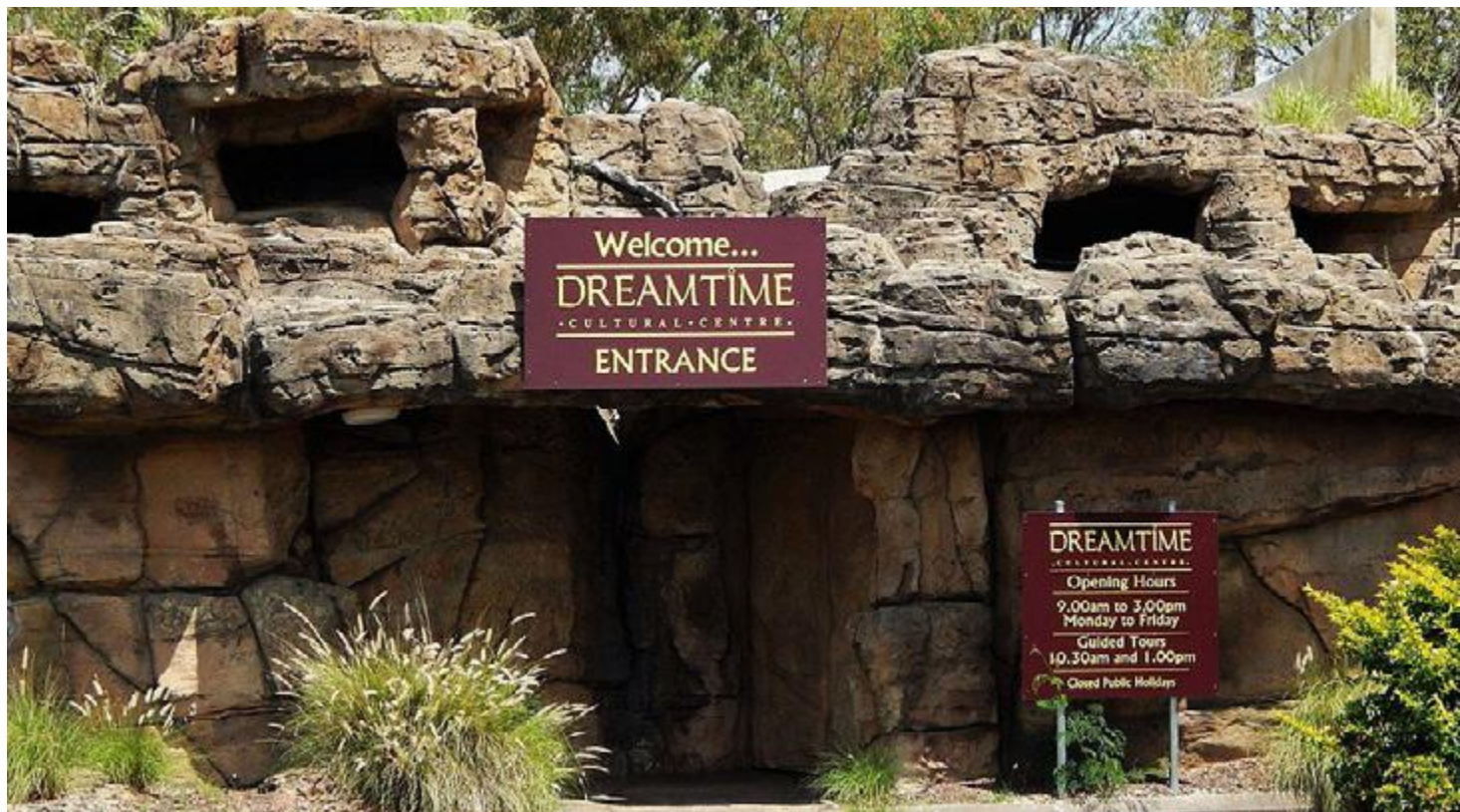
The complex includes huts, the dugong sculpture, and plants particular to the Torres Strait Islands. Attractively landscaped with native plants and a waterfall, the centre offers an interpretive walk, guided tours and cultural experiences.

Giant dugong sculpture

The solidly built giant sculpture of a dugong houses artefacts and educational displays highlighting the rich indigenous heritage of the area. Several Torres Strait Islander groups were involved in the creation and style of the sculpture and exhibit.

Throughout history, the dugong has been a mythological animal. A beautifully unique creature, it resembles a walrus or whale, but its closest relative is in fact the elephant.

The coastal indigenous tribes of Australia and the Torres Strait Islands regarded the dugong with a very high economic and social value as it provided a rare and nutritious source of meat.





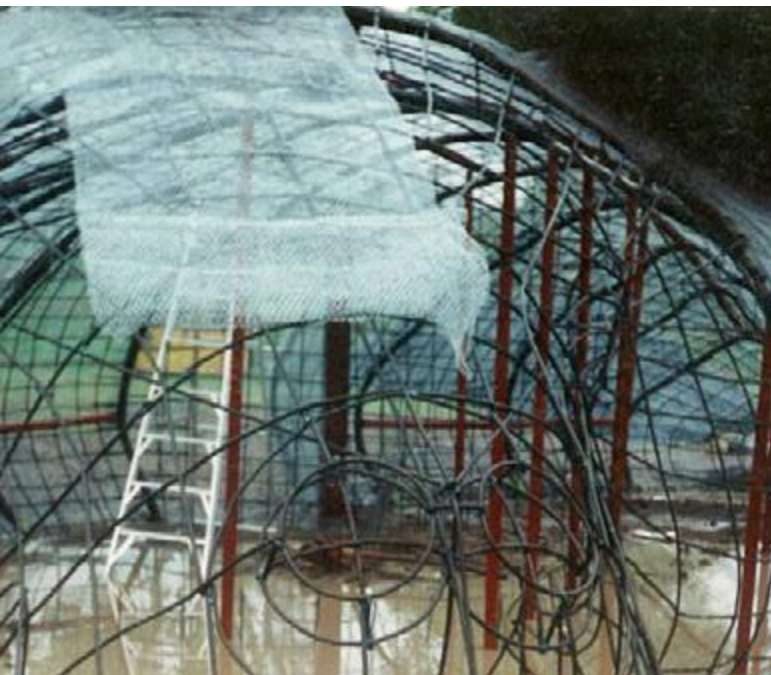
Building the dugong sculpture

The giant dugong sculpture is 22m long, 5m high and 12m wide. It was made by a team of sculptors, carpenters, and builders, using a combination of fibreglass and concrete over a steel frame.

The internal armature was made with bent 12mm steel bars. Wire mesh covered the frame to form a substrate for the sprayed concrete texture surface. Allowance was made for practical features like an air conditioner, entrance doorway, internal lighting and display areas. The sculpture was finished with realistic skin textures and colours.

The photos on these pages show the process of building the larger than life replica of this magnificent sea creature.

To find more BIG animals like this, see our Big Things Catalogue, or contact Natureworks.





Covering with wire mesh, raising off the ground slightly



Spraying internal mesh frame with concrete. Layering step by step



Spraying external mesh frame with concrete



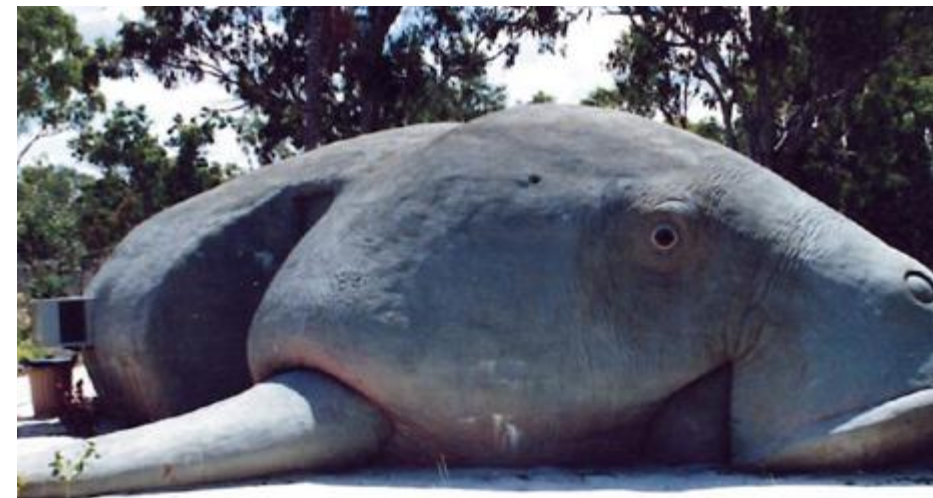
Steel armature with wire mesh



Entry with sprayed concrete before smoothing



Entrance to internal exhibits

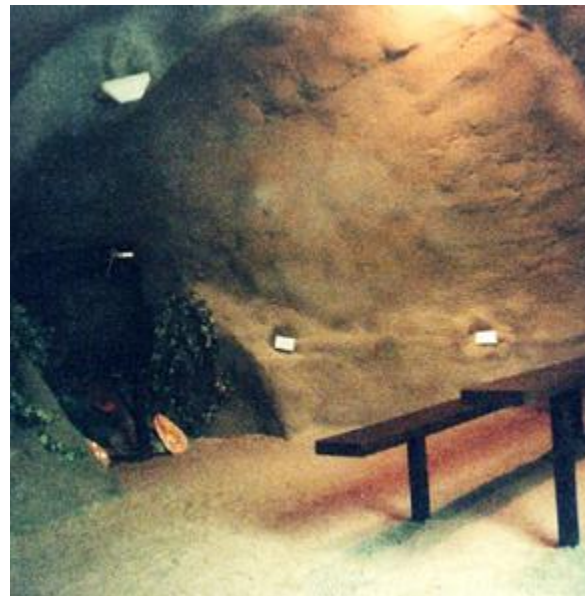


Front View of entry

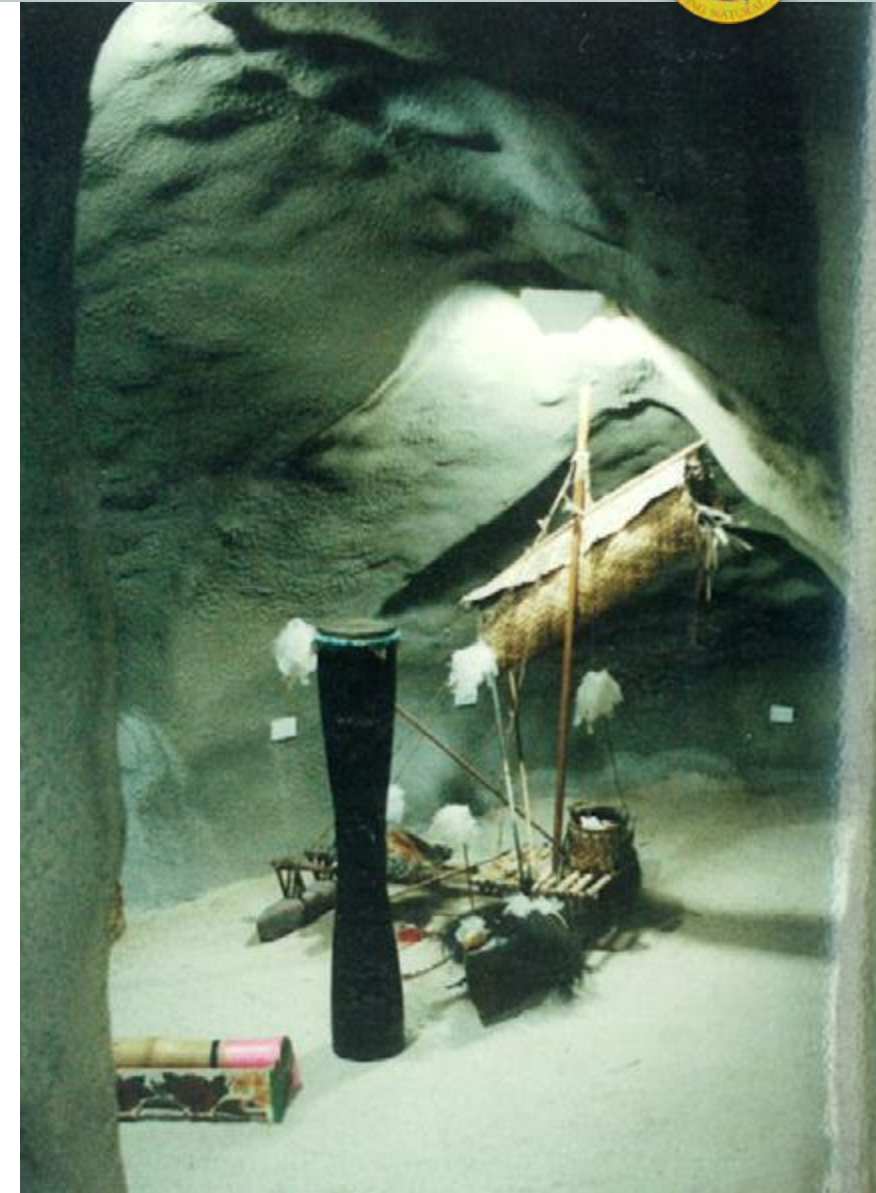




Indigenous Torres Strait Islanders endeavouring to preserve the stories of generations past and generations to come.



Internal theatrette



Cultural artefact exhibit inside the dugong sculpture



Entrance to the Centre, with rockwork by Natureworks



Dreamtime Cultural Centre



Rockhampton, QLD, Australia



1988-92

PROJECT CASE STUDY

Artificial rocks for the Centre

Natureworks contributed to the Centre's unique feel by building artificial rock structures designed to blend in with the local landscape. Through decades of experience we have mastered the art of mixing and matching synthetic and natural rock to create the ultimate rockscape.

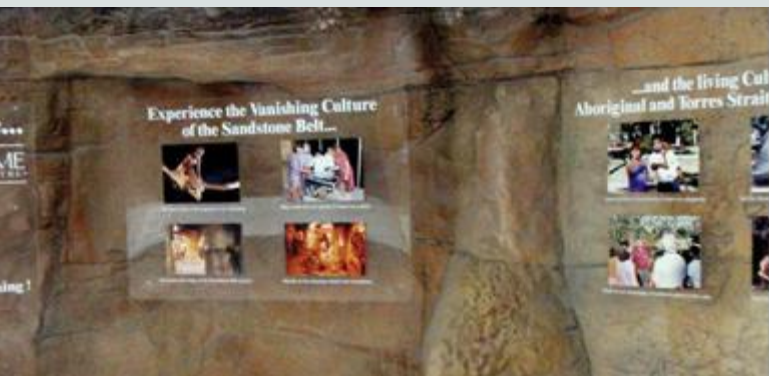
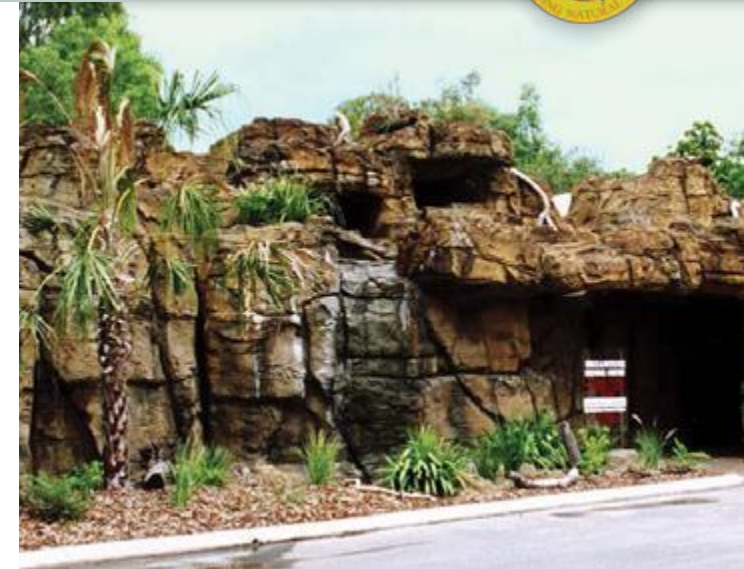
Artistically crafted with the finest of detail, our rocks are lightweight, sturdy, durable and capable of structural support. We can fabricate rocks to fit interior or exterior environments using a range of techniques.

Creating cultural experiences

Natureworks has been involved in numerous public education and cultural projects, which we have always developed with a sensitivity to cultural issues. We believe it is essential to ensure authenticity in communication and presentation. To do this, we conduct accurate research, collaborate with First Nations peoples and work with local communities.

If you would like to create a unique visitor experience for culture, education, tourism or business, Natureworks can help bring your vision to life. We manufacture high-quality components that can stand alone (such as the giant dugong sculpture) or combine to create total environments (such as the rockwork for the Dreamtime Centre).

Contact Natureworks to discuss ideas for your project.





Big things have big impact! Contact Natureworks to discuss ideas.