

GET SMART

THE CONNECTED SHOP



SMART DOOR LOCK
USER MANUAL

Welcome to the Mini Smart Door Lock User Manual. Your easy, step-by-step guide to install, set up, and connect your Mini Smart Door Lock. The device is designed to be easy-to-use and to replace all modern door knobs—be it on the main door, bedroom door knobs, and so on. The locks can also be utilized as a smart lock for a sliding door and traditional swing doors. Please follow this installation guide to get you set up. Should you need further instructions, you can always reach us by chat, phone or email.



SUMMARY

I. Device Installation



1. Installation Guide
 - a) Installation Video

II. Initialization



2. Initial State of your Smart Lock
 - a) Resetting the Smart Door Lock
 - b) Access Door Lock Settings
 - c) Add Administrator
 - d) Delete Administrator
 - e) Volume Adjustment
 - f) Language Setting

III. Mobile App Connection



3. Registering on the Mobile App
 - a) Downloading the Mobile App
 - b) Logging In & Registering
 - c) Resetting your Password
 - d) Adding Locations
 - e) Adding Devices
 - f) Adding Members

IV. Device Functions



4. Functions

- a) Remote Functions over Mobile App
- b) Dynamic Password
- c) Remote Unlock

V. Additional Information



5. Other Notes

PACKAGING DETAILS



1 Front Smart Lock Handle

7 Rubber Pads

2 Latch

8 Back Plate

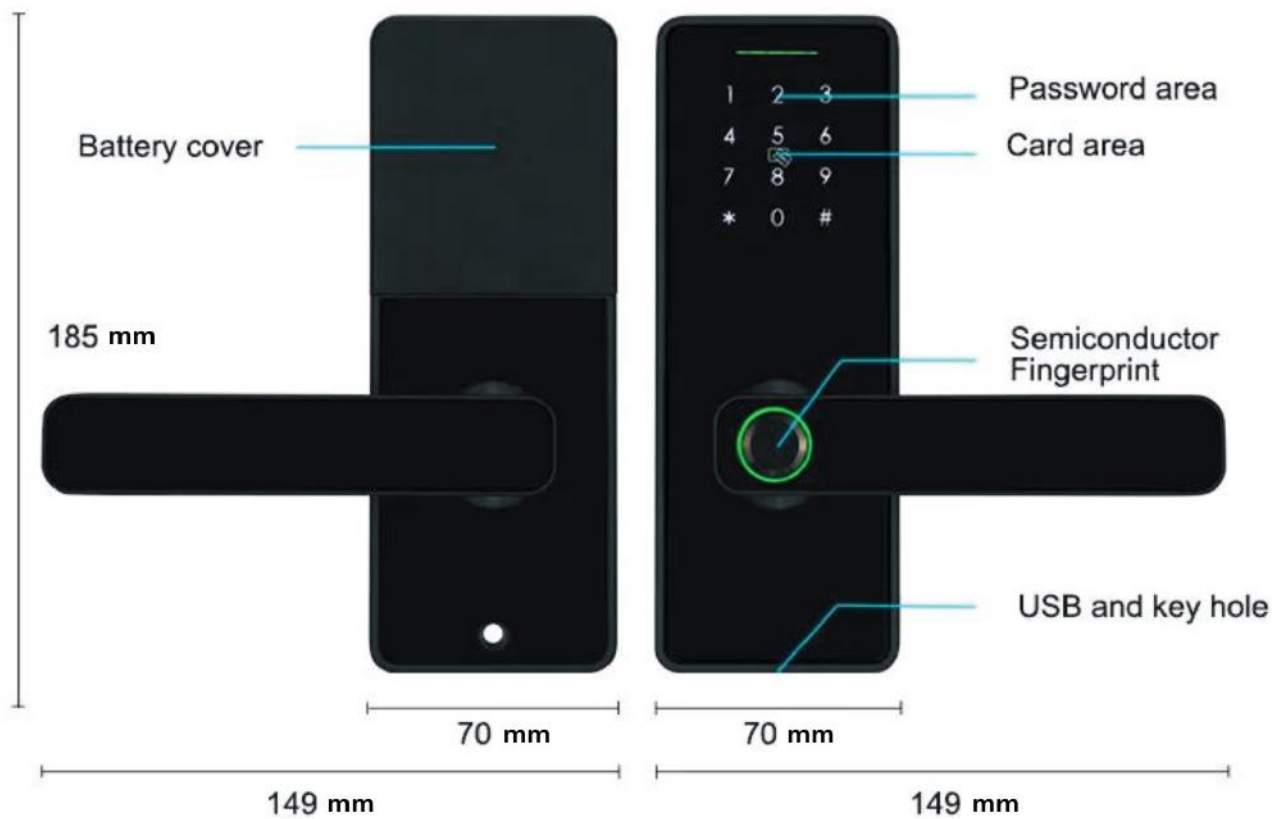
3 Metal Rod and Lock Screws

4 Back Smart Lock Handle

5 Mechanical Key

6 Keyfobs/cards

STEP BY STEP SMART LOCK INSTALLATION GUIDE



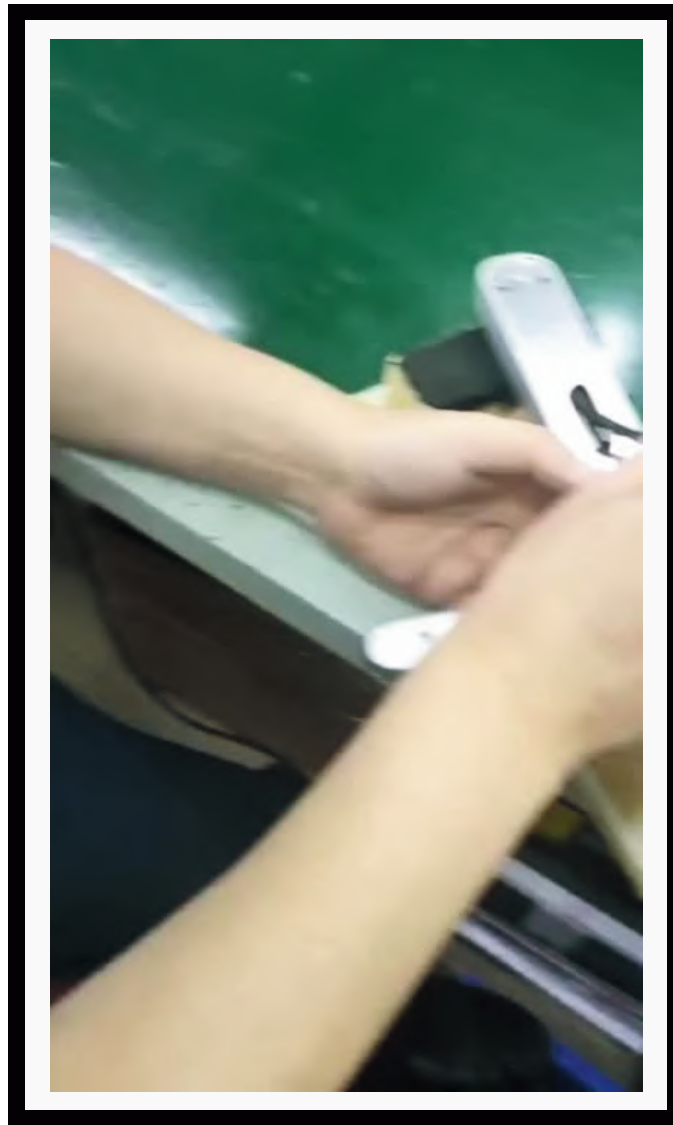
1. BEFORE INSTALLATION



A. Change Handle Direction (Optional)

Depending on what type of door opening or direction you will install the smart door locks, you will need to change the handle direction accordingly.

Please refer to the video below on how to change the handle direction:



Important Note:

Please make sure that when you adjust or change the handle direction, you will check if the handle is returned to its correct position before tightening the screws again because problems such as the handle will stay down when you push it down or it will not be used properly because it is loose.

1. BEFORE INSTALLATION

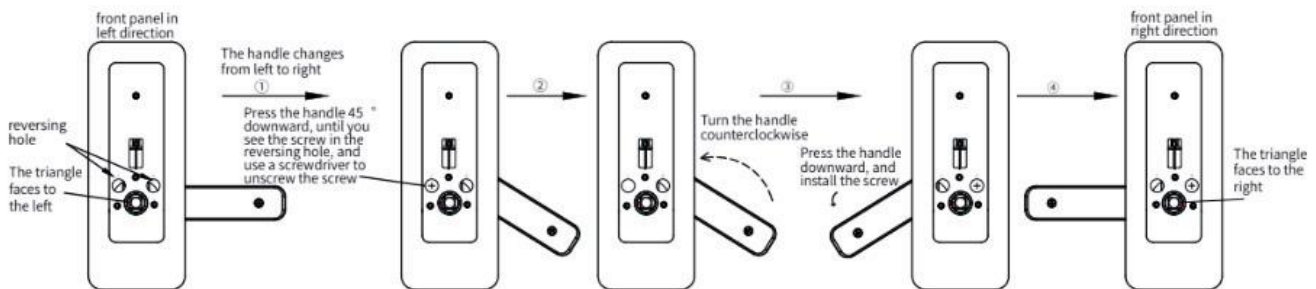


B. Change Clutch Direction (Required)

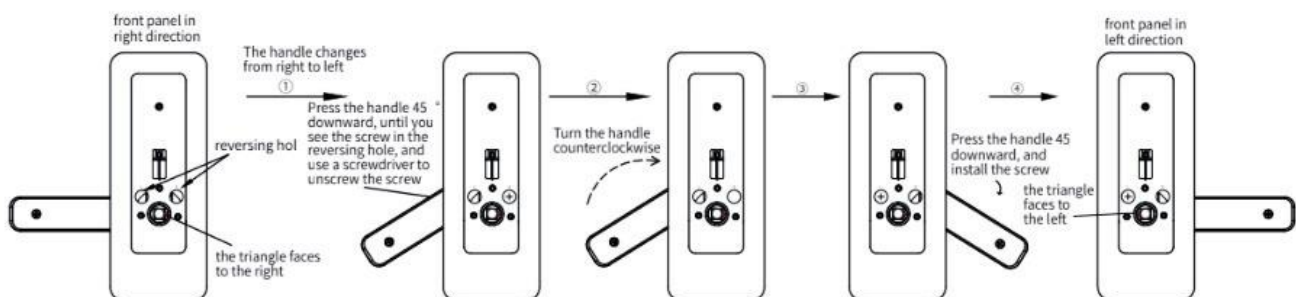
Before you install all the parts, you have to make sure that you **ADJUSTED THE CLUTCH DIRECTION** accordingly. The clutch is found at the back of the front/outside lock panel where the keypad is located.

This is to make sure that the smart lock will lock properly. It should be according to the direction of your front/outside door handle. If you have the door handle to the Left, then the L should be in the upward position pointed by the arrow and vice versa.

▼ Change direction of left door opening



▼ Change direction of right door opening

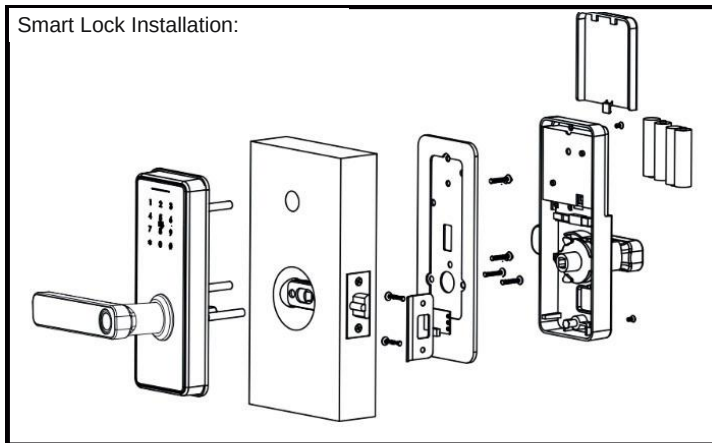


Important Notes:

If the clutch direction is not adjusted correctly, the smart lock will not lock properly even though it will say it is "locked".

To know that you have adjusted it correctly, the smart door lock cannot be opened when you push the handle downward from the outside unless you input a user information (i.e. fingerprint/passcode/card/wrist band).

1. INSTALLATION

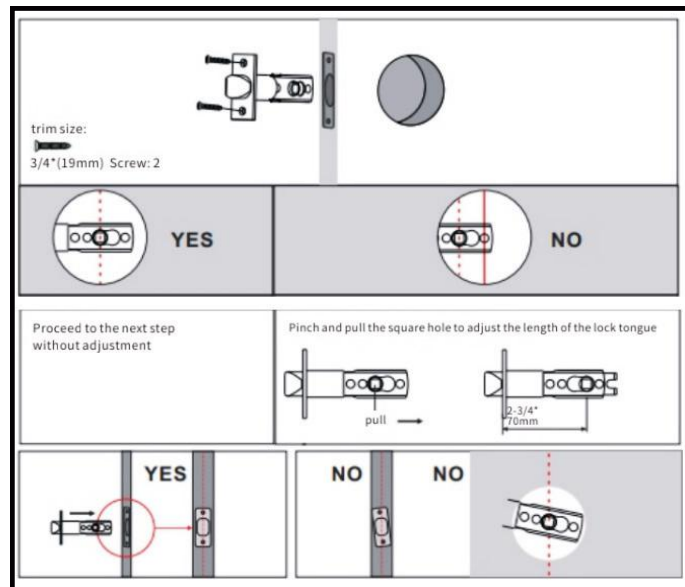


A. Start by removing your current lock. This is generally done by unscrewing the bolts and pulling out your current door knob.

B. Insert your new Latch and Strike Plate into the door frame. Tighten the Screws on the top and bottom sides.

C. Insert the Cylinder Lock with the Cylinder Fixing Screws as shown in the diagram on the right.

D. Make sure the keyhole is facing the exterior side of the door. Insert and rotate the keyhole to make sure the bolt is retracted smoothly, and then fix the screw.



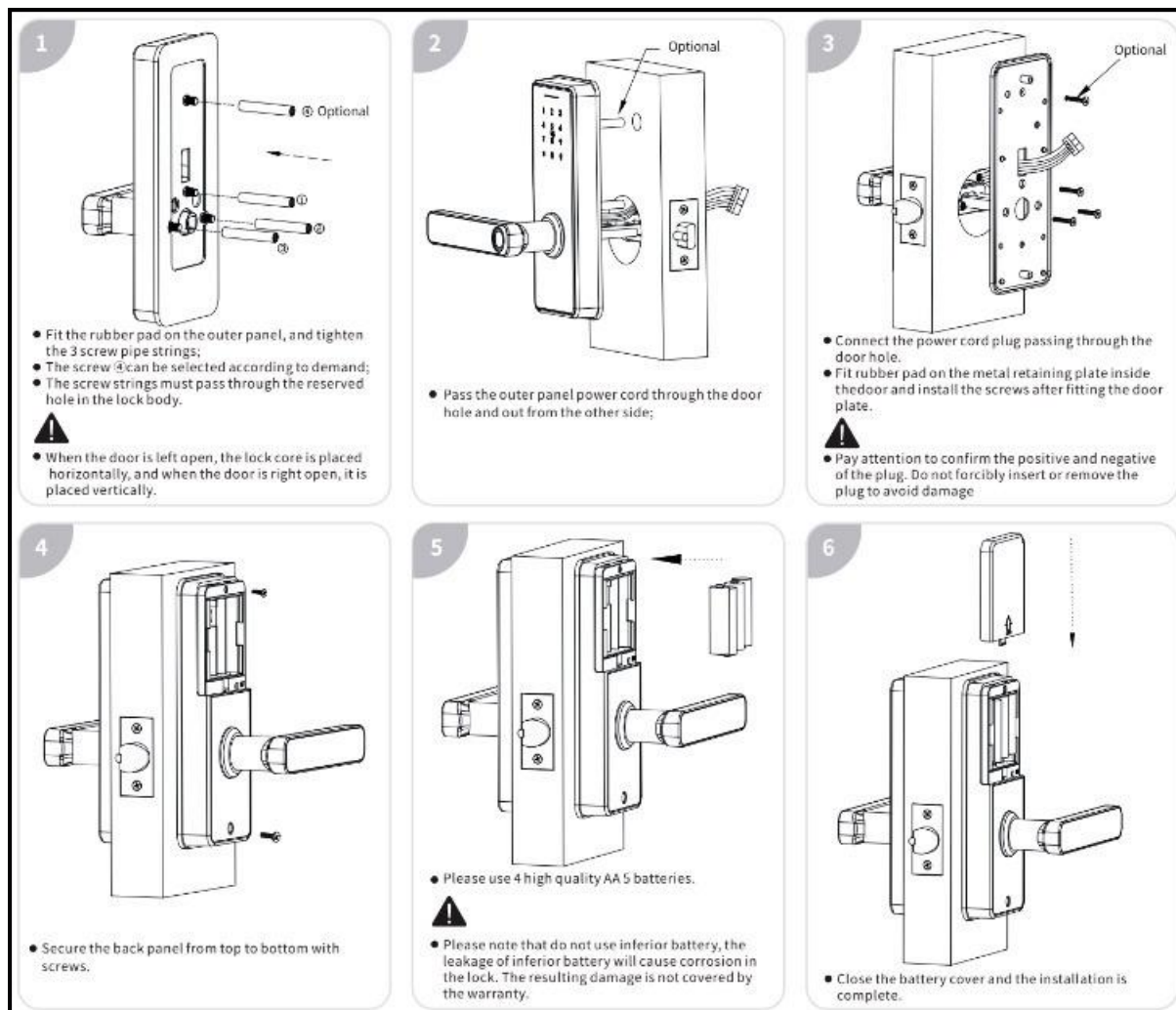
1. INSTALLATION



E. Affix the Front Door Handle to the door. Insert the Metal Rod into the middle hole behind the handle. The positioning pin will pop out and hold in place. Install the handle by passing the Metal Rod through the door with the use of the Lock Body Screws.

F. Insert the power cord of the Front Handle through the door to connect it to the Back Door Handle.

G. After both handles are fixed with Screws, install the batteries in its compartment. Place the cover on top and close it with the screws.



2. INITIAL STATE OF YOUR SMART LOCK



Legend:

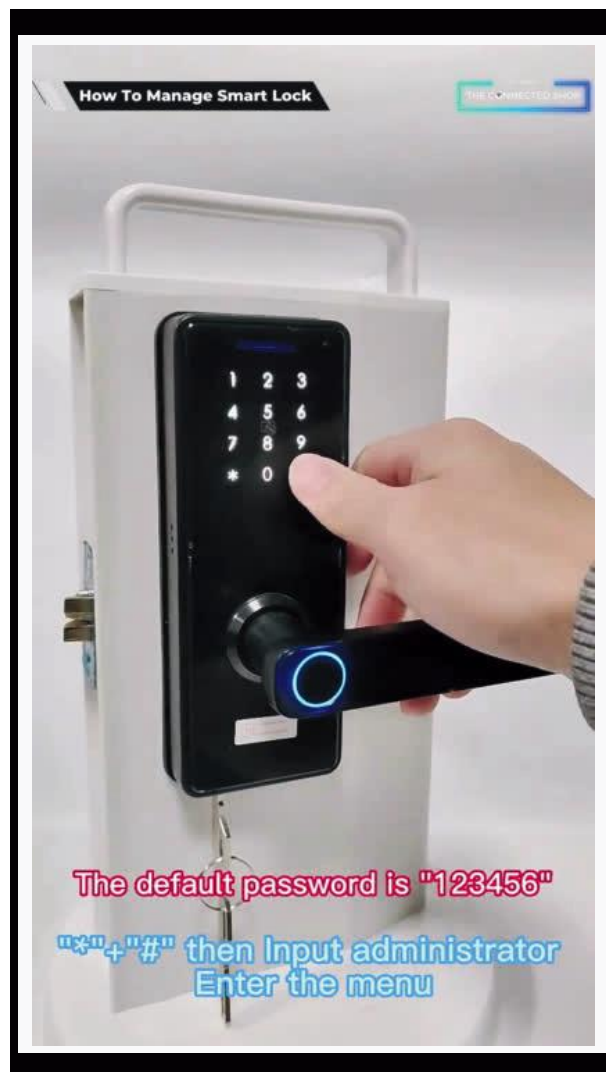
* = to go back or return.

= to enter or confirm everytime you input a code

123456 = the default administrator information.

Note:

Under the initial state, any fingerprint, keycard, and password can unlock or open the smart lock.



2. INITIAL STATE OF YOUR SMART LOCK



B.) Access Door Lock Settings (Step 1)

- Activate the smart lock and press * and # and it will have a voice prompt asking "Please enter Administrator Authorization"
- When no code/fingerprint/card is added yet, the default administrator authorization or information is 123456 then press # to enter/confirm.



2. INITIAL STATE OF YOUR SMART LOCK



C) Add Administrator

- To add an Administrator passcode for the first time, enter a 6-digit passcode and press # right after entering **123456# upon first use/initialization of the lock.**
- Alternatively, you can press 1 to add other users after inputting the administrator information.
- Then press * and 1 to input a fingerprint until the light sensor turns green.
- Tap a keycard once on the keypad to set it as the Administrator.
 - Input the intended fingerprint 4 times
 - Input a 6-digit password 2 times
 - Input an Keycard 1 time

2. INITIAL STATE OF YOUR SMART LOCK



D) Delete User

- To delete an administrator or user, activate the smart lock and press 2 after inputting the Administrator information.

2. INITIAL STATE OF YOUR SMART LOCK



E) Volume Adjustment

- Activate your Smart Lock (Press '*' and '#') and enter your Administrator Password
- Follow the voice command and press 4

2. INITIAL STATE OF YOUR SMART LOCK



F) Time Setting

- Activate your Smart Lock (Press '*' and '#') and enter your Administrator Password
- Follow the voice command and press 5
- Set the time and date as follows:
 - Example: August 22, 2024, 15:04:30. It should be written as 240822150430 and press # to confirm

3. MOBILE APP CONNECTION



a) Downloading the App

Download the application on the Google Play Store or Apple AppStore by searching “Tuya Smart” or by scanning the QR code below



b) Logging in and Registering

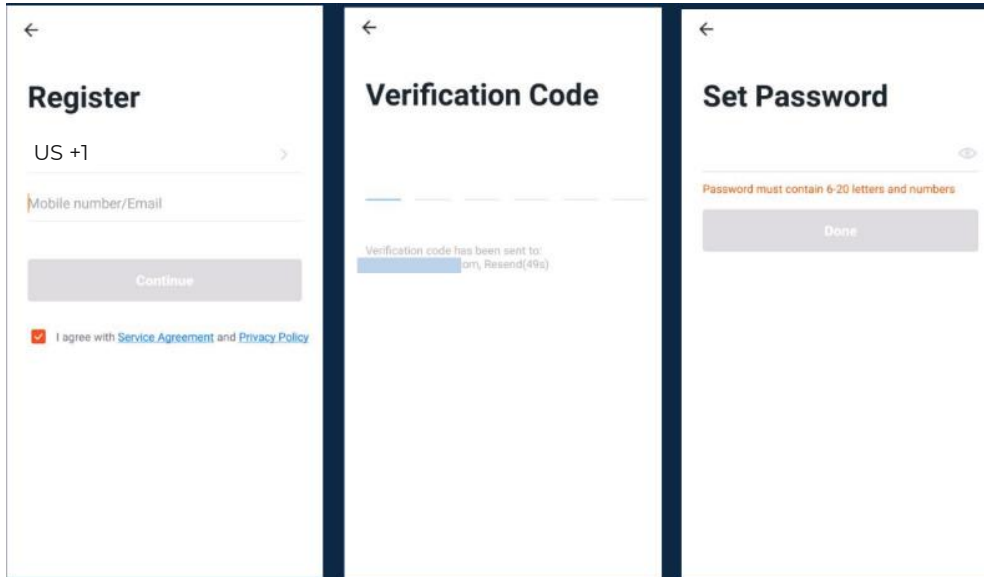
After Downloading the App

- Select the country from which you will be using the device, usually the app will prompt it automatically
- You will be redirected to register via email where a verification code will be sent and proceed to enter it on the app in the allotted time limit
- Once the verification code has been entered into the app, you will be asked to set your password
- You will then have full access to the Tuya Smart Platform

Tuya Smart Logo



3. MOBILE APP CONNECTION

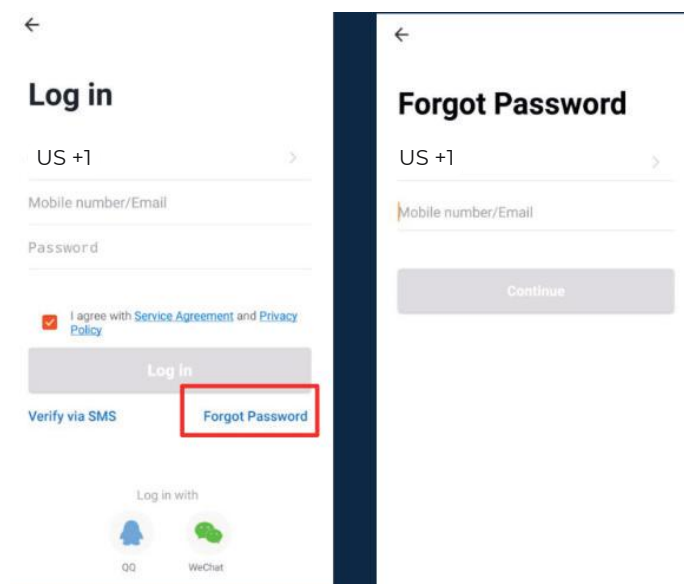


Should you be an existing user to the Tuya Smart Platform, log in using your email and password from the login page.

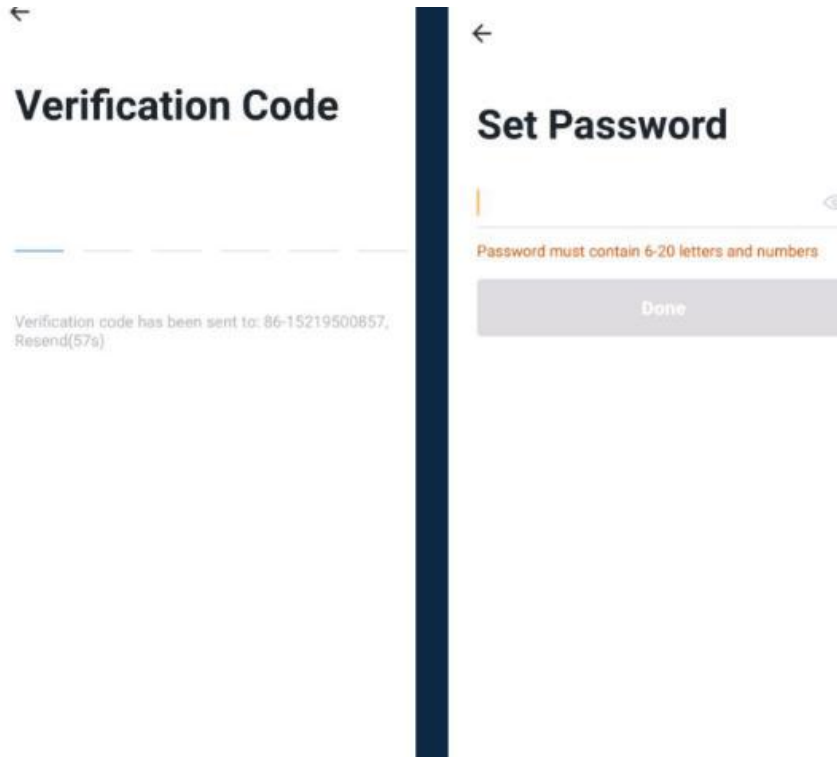
c) Resetting your Password

In case you have forgotten your password and need to reset it, please follow the steps below:

- On the Login Page, when prompted for your email & password, click “Forgot Password” button located below the “Login” button
- Select the country from which you will be using the device, usually the app will prompt it automatically



3. MOBILE APP CONNECTION

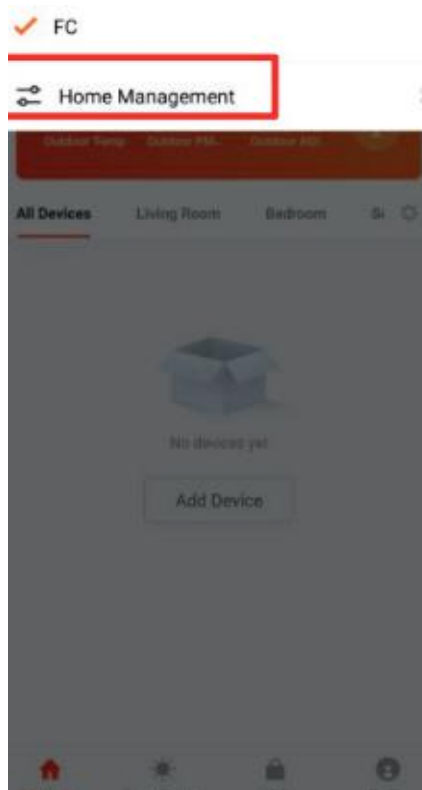


- You will be prompted to enter the email where a verification code will be sent and proceed to enter it on the app in the allotted time limit
- Once the verification code has been entered into the app, you will be asked to set your new password
- You will then have full access to the Tuya Smart Platform

In the case that you would like to change your password from the app, please follow the steps below:

- Tap the 'Me' tab on the bottom right hand corner of your screen
- Click 'Change Login Password'
- You will be taken to the 'Account Verification' page and then tap 'Get Verification Code' button
- This will send a verification to your registered email
- Enter the code in the app
- Proceed to enter the new password

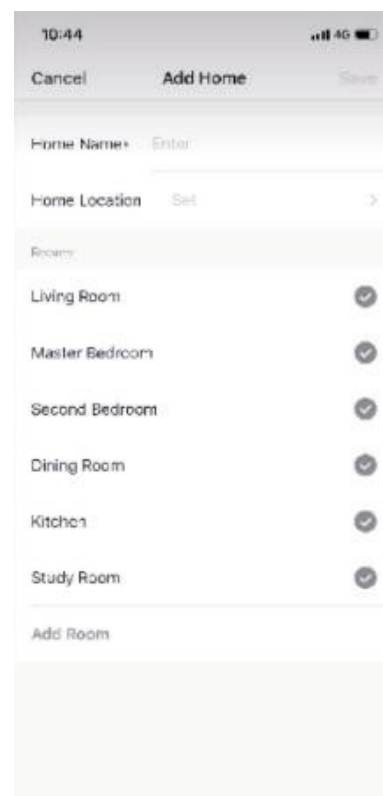
3. MOBILE APP CONNECTION



d) Adding Locations

- Tap the button on the top-left corner of the screen & select 'Home Management' from the dropdown list
 - One account can manage multiple locations at the same time. The user can operate multiple devices in a single location by selecting it from the drop-down menu

- If you already have a Home setup, simply click 'Join a Home'. Otherwise, click 'Create a home'
- Enter the details on the screen
- Click Confirm
 - Other Household members can also control the smart devices that are registered in this household, but will not be able to modify, add, or delete devices

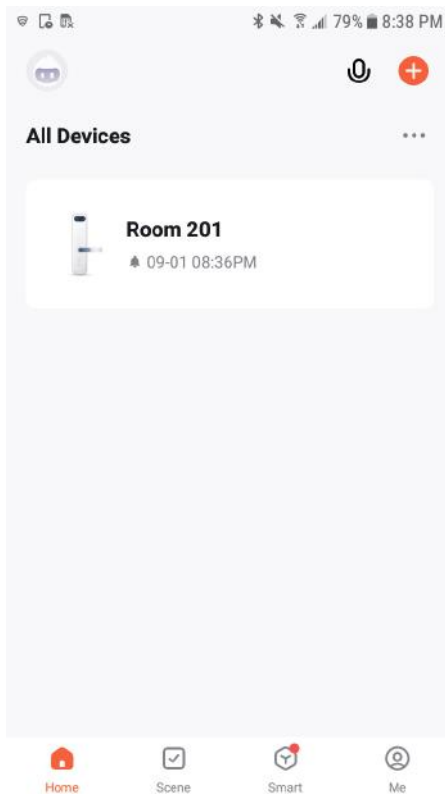


3. MOBILE APP CONNECTION



e) Adding Devices

To add devices on the app, please follow the instructions below. Your devices and phone must be connected to the same 2.4GHz Wi-Fi network in order for this to work.



- To connect it to the app, just touch anything on the keypad of the lock to light it up.
- Then, press "1" and "#" then it will ask for administrator information, the default admin when nothing's added yet is "123456" then press "#" to enter the code.
- Then the hotspot is now turned on. Then make sure you downloaded the Tuya Smart app.
- To add a device, click the 'Add Device' or tap the "Plus button" on the top-right corner of your screen and select 'Add Device'



- This will bring up a list of devices. Go to 'Camera & Lock' from the left side and then click 'Lock (Wi-Fi)' to select your Smart Lock device

3. MOBILE APP CONNECTION

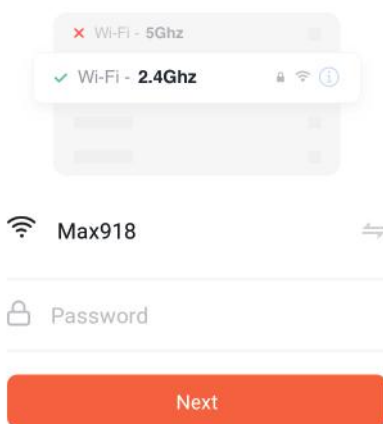


📶 🔒 🔋 78% 8:43 PM

✕

Select 2.4 GHz Wi-Fi Network and enter password.

If your Wi-Fi is 5GHz, please set it to be 2.4GHz.
[Common router setting method](#)

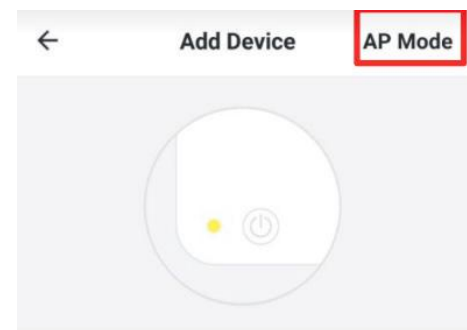


- You are going to be asked to connect it to your 2.4 GHz connection in your home WiFi then make sure you input the password correctly. Then choose AP mode then confirm the indicator is blinking while doing this make sure that the 0 is blinking on the keypad then you are prompted to go to your Phone Settings > WiFi > refresh the page and find the Smart Life xxx connection then connect to it.

Don't be worried if it will say "no internet" because that is the lock hotspot connection that will be connecting to your Home WiFi.

Note: Make sure also you are connected to the 2.4GHz connection of your WiFi and not 5G or other connections because it will not be able to add the lock to the app.

- Check if the light indicator is blinking.
- Once you've tapped the 'Confirmation' button, you will be asked to select the current status of the light indicator. Options are AP Mode ("Access Point mode" or by default, uses access points like a Wi-Fi Hotspot) or EZ Mode ("Easy-connect mode" which is most compatible if you will directly connect your phone to the Wi-Fi router)
 - Should you select the AP mode, you will have to connect your phone to the lock or device's hotspot before moving onto the next step



Power on the device and confirm that indicator light rapidly blinks

[How to make indicator rapidly blink](#)

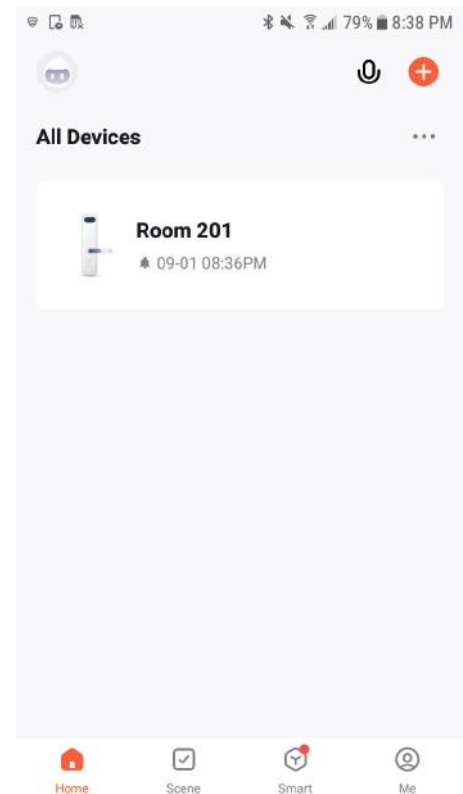
Confirm indicator rapidly blink

3. MOBILE APP CONNECTION



- Once you've completed these steps, make sure your phone and device are as close as possible. There will be a prompt from the lock and on the screen that pairing was a success

- Finish adding your device. Once this has been done successfully, you can go on to change the name of your device and control its functions

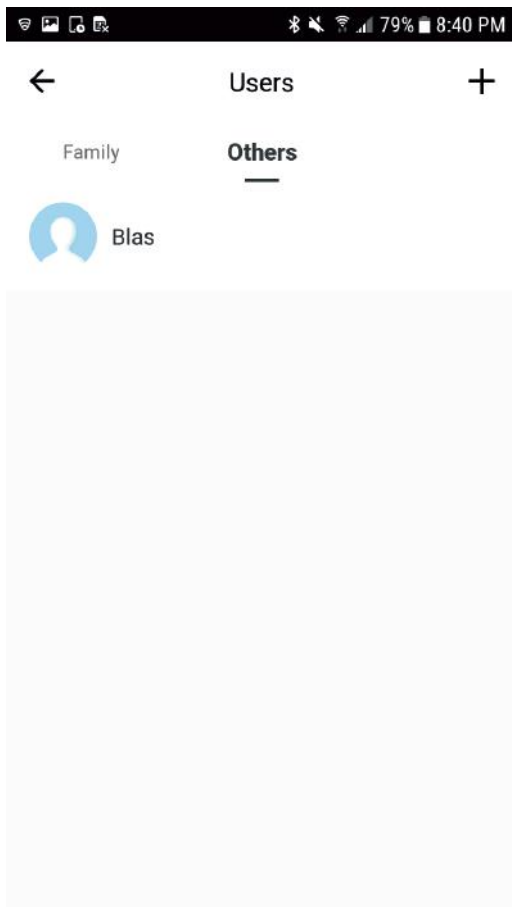


3. MOBILE APP CONNECTION



f) Adding Members

In order for others to gain access to a device, they will have to be added as members to the location/room.



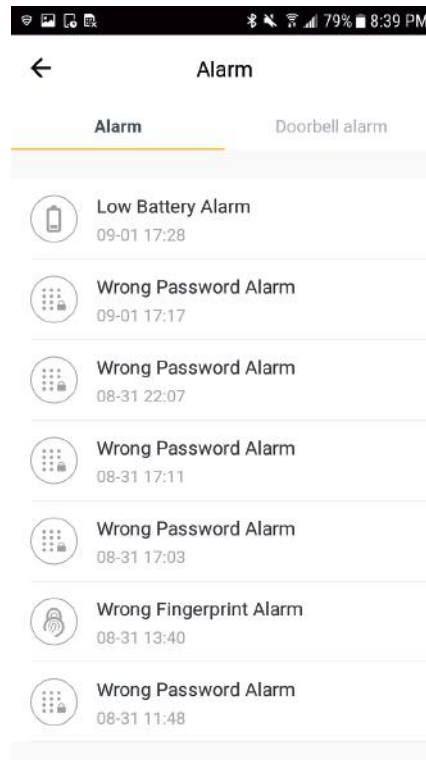
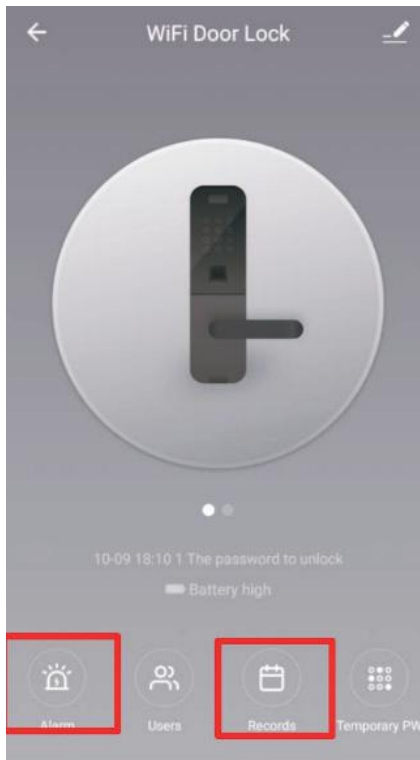
To add a member to the location, please follow the following steps:

- Tap the 'Me' tab at the bottom-right corner of your screen
- Click on 'Home Management'
- Select the location you would like to add the new member to
- Tap 'Add Member' and select how you would like to share the invitation to the new member

4. DEVICE FUNCTIONS

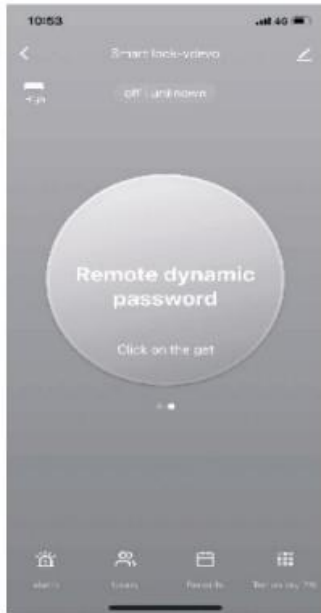


a) Remote Functions via The Mobile App



- Select the Smart Lock you would like to use from the Home Page
- Click 'Alarm' to check the battery state
- Click 'Records' to check the unlock records

4. DEVICE FUNCTIONS



b) Dynamic Password (optional)

- Click the 'Key' button on the phone screen to get your Dynamic Password (this is a short-term password that will last only for a few minutes)

- Enter the Dynamic Password to unlock the device

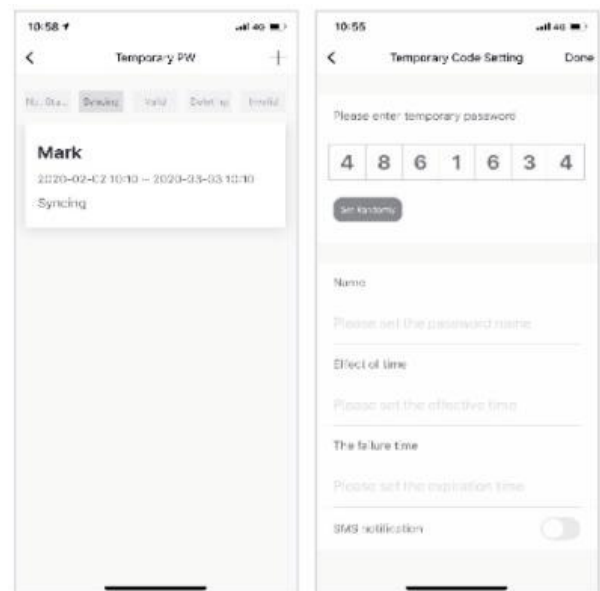
c) Temporary Password (optional)

- On the Lock Screen tap the bottom-right 'Temporary PW' button

- Click 'Add'. Set your own Temporary Password, name of user, and the start and end date time. Make sure that the time on your mobile app and lock are synchronized

- Click 'Done' on the top-right corner to complete the operation

- Activate the lock pad and enter the code you've put in to activate the temporary-lock function and press '#' to confirm



4. DEVICE FUNCTIONS



d) Remote Unlock

- To grant access to someone when you are away, instruct them to press '9' and '#' on the Lock Pad. This will prompt a message or request on your mobile app to confirm remote unlocking.

5. OTHER NOTES



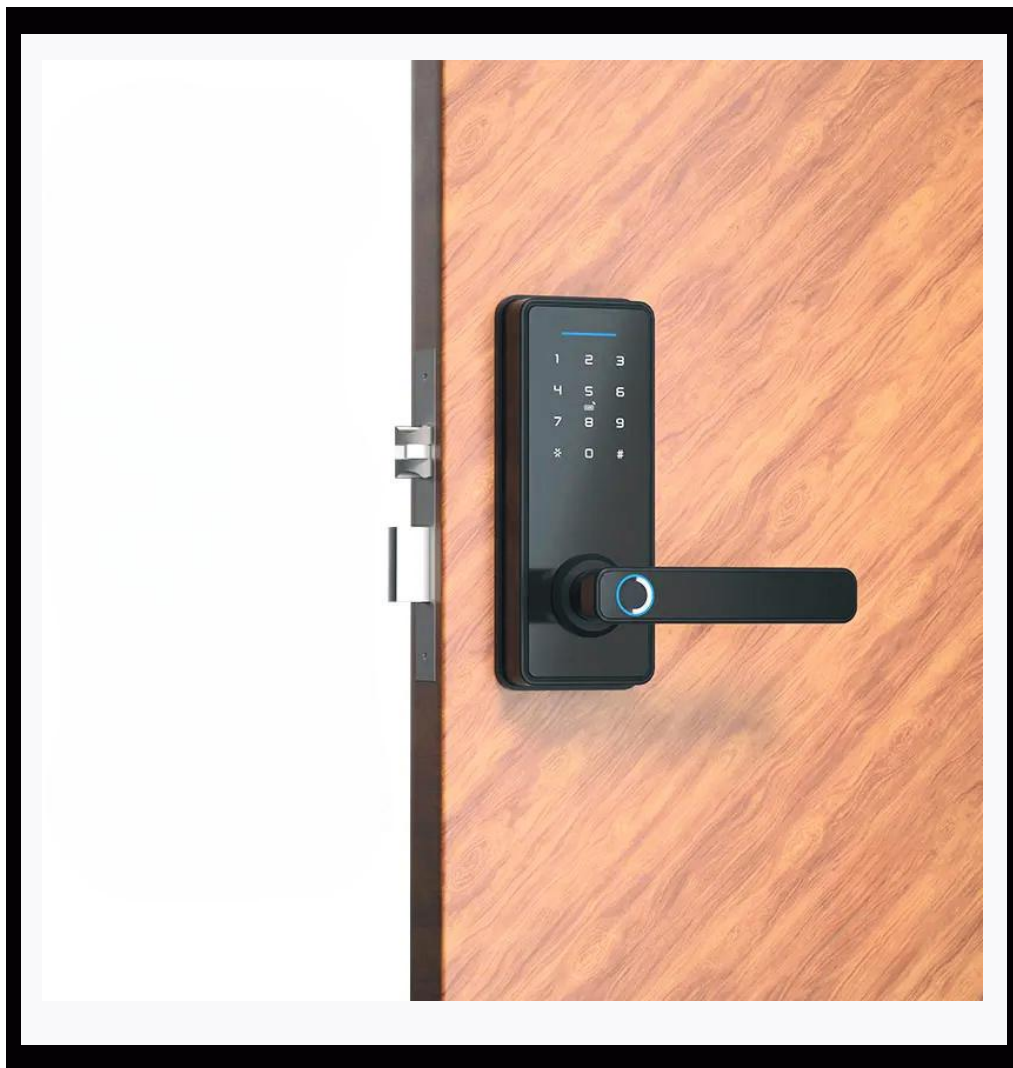
Created by Design Circle

- To set up your network: Activate the smart lock by entering your Administrator information. Press 6 and 2 successively. The device will then automatically search for the network. Keep the mobile app open and close to the device to ensure successful pairing. Wait for the loading screen on your phone to finish before exiting.
- To reset the lock, press the reset button found in the battery compartment.

Congratulations!

You have successfully installed your very own Mini Smart Door Lock.
Thank you for being a valued customer of The Connected Shop.

www.theconnectedshop.com



THE CONNECTED SHOP



THE CONNECTED SHOP