

Easy Concentration & Analysis of Maple Syrup by MonoTrap - Thermal Desorption

Protocol

Maple Syrup

Put 20 g into a 40 mL vial

 Head Space Sampling
 MonoTrap RGC18 TD X 1 pc

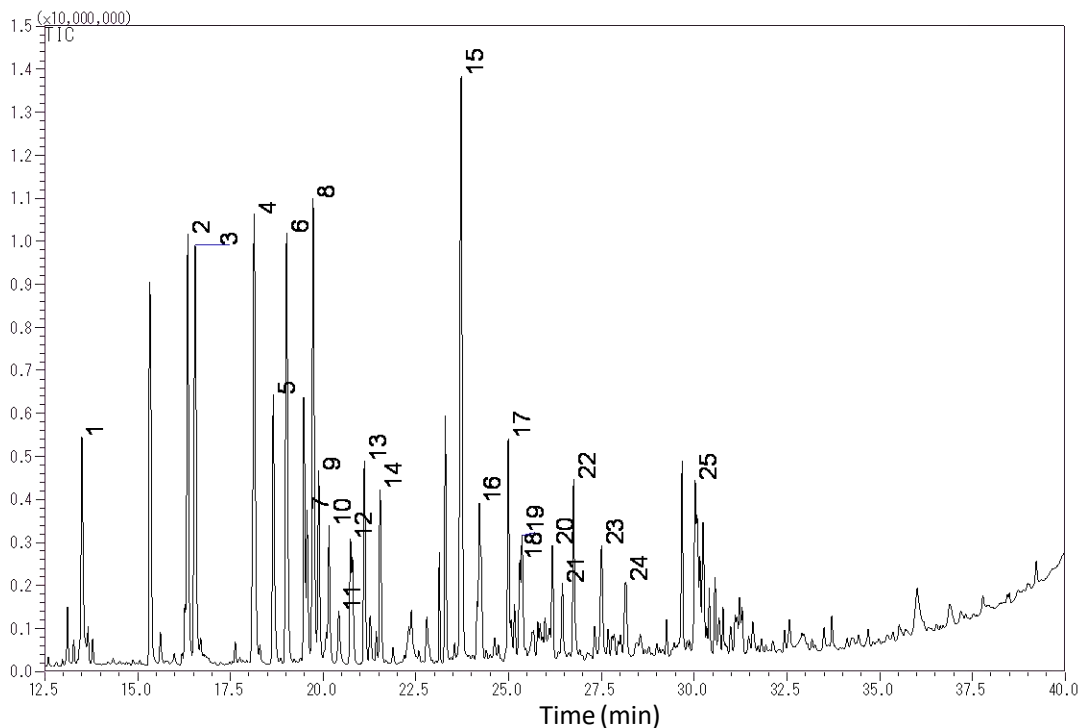
At 60 °C for 12 hours

TD/GC/MS

GC Conditions

System : GC/MS-Thermal Desorption (T-Dex II)
Column : InertCap Pure-WAX
 0.25 mm I.D. × 60 m, df = 0.25 μm
Col.Temp. : 40 °C (5 min) - 6 °C/min - 250 °C
Carrier Gas : He, 1 mL/min (constant flow)

Desorb Temp. : 200 °C
Time : 5 min
Flow : 5 mL/min
Split : 25 mL/min
Cryo Trapping : -150 °C
Injection Temp. : 250 °C
Detection : MS Scan (*m/z* 28.5 - 600)



- | | |
|-------------------------------|---|
| 1. Isobutyl alcohol | 14. Trimethylpyrazine |
| 2. D-Limonene | 15. 5-c-Acetyl-1,4-anhydro-2,6-dideoxy-1,4-dimethylhex-1-en-3-ulose |
| 3. Isopentyl alcohol | 16. Thymine |
| 4. Methylpyrazine | 17. 2,3-Butanediol |
| 5. Acetyl methyl carbinol | 18. Propylene Glycol |
| 6. Hydroxyacetone | 19. 3-Methylenedihydro-2(3H)-furanone |
| 7. Dimethylpyrazine | 20. <i>m</i> -Methoxytoluene |
| 8. Dimethylpyrazine | 21. 2-Acetyl-4-methylpyridine |
| 9. Ethylpyrazine | 22. 2-Furanmethanol |
| 10. Dimethylpyrazine | 23. 3-Ethyl-2-hydroxy-2-cyclopenten-1-one |
| 11. 2-Cyclopenten-1-one | 24. 3-Methyl-2(5H)-furanone |
| 12. 2-Methyl-2-cyclopentenone | 25. 2-Hydroxy-1-methylcyclopenten-3-one |
| 13. 2-Ethyl-6-methylpyrazine | |

*Data provided by Library Search

Products Line UP



MonoTrap-TD Glass Tube



1050-74201 1050-73201

MonoTrap-TD

1050-73201 RSC18TD (ODS,SilicaGel) 30 pcs

1050-74201 RGC18TD (Graphite Carbon contained) 30 pcs

MonoTrap-TD Glass Tube 1003 -75001

Linex -MT Tube

1003 -75002 TD20/TDex/ATD-MT Tube

Easy 3 Steps

1. Open the Ampoull



Ready-to-use and pre-conditioned MonoTrap TD are delivered in ampoules .

2. Sampling



Samples:
Flower, Food, Alcohol etc...

Hang the MonoTrap for TD in a tedlar bag or a vial to trap the target compounds. No need to use pumps.

3. Analysis



Inert MonoTrap into a glass tube and GC•GC/MS

● Head Space Sampling

● Stirring Sampling

● Passive Sampling



GL Sciences disclaims any and all responsibility for any injury or damage which may be caused by this data directly or indirectly. We reserve the right to amend this information or data at any time and without any prior announcement.

GL Sciences, Inc. Japan

22-1 Nishishinjuku 6-Chome
Shinjuku-ku, Tokyo,
163-1130, Japan
Phone: +81-3-5323-6620
Fax: +81-3-5323-6621
Email: world@glsc.co.jp
Web: www.glsciences.com

GL Sciences B.V.

De Sleutel 9
5652 AS Eindhoven
The Netherlands
Phone: +31 (0)40 254 95 31
Email: info@glsciences.eu
Web: www.glsciences.eu

GL Sciences (ShangHai) Ltd.

Tower B, Room 2003,
Far East International Plaza,
NO,317 Xianxia Road,
Changning District.
Shanghai, China P.C. 200032
Phone: +86 (0)21-6278-2272
Email: contact@glsciences.com.cn
Web: www.glsciences.com.cn

GL Sciences, Inc. USA

4733 Torrance Blvd. Suite 255
Torrance, CA 90503
Phone: 310-265-4424
Fax: 310-265-4425
Email: info@glsciencesinc.com
Web: www.glsciencesinc.com

International Distributors

Visit our Website at:
<https://www.glsciences.com/company/distributor.html>

