



# INTEGRATED REPORT 2025


---

Changing Lives Through Nature

---



NATURE CONNECT



*"For 25 years,  
we've grown roots  
in communities and  
wings in young  
people. The next  
25? We grow  
forests of change."*

# Table of contents

Executive Summary	4
Our Story	5
Meet the Board	7
Governance & Risk Management	9
Chairman's Letter	12
CEO's Report	14
Looking Forward	16
Financials	18
Stakeholder Map	24
Programme Reports	28
Strategic Collaborations	69
Donors and Partners	75

# Executive Summary

2025 was a year of transformation. From deepening our strategic roots to expanding our programme reach, Nature Connect made meaningful strides toward connecting people with nature. Across all three core programmes, our work reached over 15,000 participants, supported by a growing network of partners, funders, and passionate individuals.

While our programmes flourished; this year also marked a turning point in how we measure our success – moving from numbers alone to transformational change grounded in our Theory of Change. We saw young people choose environmental stewardship over short-term gain, teachers champion sustainability in classrooms, and job seekers build green careers against the odds.

Looking forward, our sights are set on scaling impact: deepening programme quality, expanding partnerships, and driving systemic change. This report tells that story – not just of where we've been, but where we're going.



## NATURE CONNECT

In 2026, Nature Connect proudly celebrates 25 years of *Changing Lives Through Nature*. Since 2001, we've empowered thousands of young South Africans through environmental education, skills training, and conservation initiatives. From schools to natural spaces, we've nurtured a generation of changemakers dedicated to protecting our planet.



### Our mission

Get people in Africa to love and protect nature



### Our vision

People in Africa are connected to nature and act as its stewards, benefiting from an expanding green economy

# OUR STORY



**N**ature Connect began in 2001 as the Zeekoevlei Environmental Education Programme, running 47 youth camps in its first year. By 2006, we had evolved into the Cape Town Environmental Education Trust (CTEET) and opened the False Bay Environmental Education Centre, laying the groundwork for deeper conservation work.

In 2007, the Nature Care Fund and Green Skills Development programme were launched, and by 2009 a partnership with the City of Cape Town placed eight conservation sites under our care.

The following years saw steady growth. In 2014, we launched the first accredited Nature Conservation Learnership, creating pathways for young professionals.

Awards and recognition followed, alongside pioneering initiatives such as the River Ambassadors project. In 2021, the Sustainable Schools programme expanded our reach nationally, taking environmental learning into classrooms across South Africa.

Recent milestones mark our continued impact. In 2022, we introduced accredited job-readiness training, and in 2023 we formally adopted the name Nature Connect while extending our work into biodiversity offsetting.

In 2024, we were honoured with three SANParks Kudu Awards, celebrating excellence in conservation education and partnerships.

The following year, 2025, we received the WESSA Award for Corporates, recognising our leadership in environmental sustainability.

***From humble beginnings at Zeekoevlei, Nature Connect has grown into a nationally recognised organisation that empowers communities, nurtures future conservation leaders, and connects people with nature in lasting ways.***

## THE BACKBONE OF IMPACT

*"Growing future leaders  
by connecting young  
minds to nature, one  
learning experience at a  
time."*

Nature Connect's operations team is the foundation that keeps every programme running. They manage financial systems, process payments, coordinate logistics, oversee media & communications, and prepare donor reports with accuracy and care. Their work ensures that conservation projects are delivered on time, within budget, and to the highest standard.

Operations covers a wide scope of responsibilities. From tracking vehicle usage for staff to ensuring compliance with donor requirements, this team provides the systems and support that make programmes possible. Every restoration project, every camp, every learner placement relies on this backbone.

The reach of operations goes beyond the office. It includes the cooks who prepare meals for camp participants, the drivers who transport equipment, and the coordinators who make sure supplies are ready when needed. These roles are essential to safety, efficiency, and the overall experience of those we serve.

## Operations Team



# MEET THE BOARD

Effective governance is central to Nature Connect's ability to deliver on its mission and create lasting value for our stakeholders. Our Board of Trustees provides strategic direction, oversight, and accountability, ensuring that our programmes are well-managed and aligned with best practice in the non-profit sector.



**Pavitray (Pavs) Pillay, trustee** Pavs has a BSc (Wits) in Zoology and Archaeology, an Honours and a MSC in Marine Biology from UCT. With a wealth of experience in marine science, education, training and communication, Pavs has worked in Namibia, Angola and SA on an UNDP/GEF-funded marine programme and at the Marine Research Institute (UCT) as the communication and scientific officer. In 2010, she was awarded the SANCOR science communicator of the year award and was featured in the *Mail & Guardian's* list of 100 Young South Africans to take to lunch.

Pavs was named International Ocean Witness in 2018 by WWF-Netherlands. She leads WWF-SA's Corporate Engagement and Behaviour Change, which drives initiatives related to sustainable consumption, plastics, food waste and market transformation with key corporate partners.



**Nicole Biondi, trustee** Nicole is an Independent Consultant, Leadership Coach, Facilitator and People Connector with expertise in non- and for-profit sectors. Her focus includes internal and external communications; business strategy and operations; and senior-level leadership, individual and team coaching.

Over the past 20 years, Nicole has held communications- focused roles across industries including tourism, conservation, early childhood development, social impact investing and organisational culture shaping. She has led large-scale strategic communications and marketing activities for Cape Town Tourism, SANParks and Innovation Edge. Her work has encompassed creating comprehensive communications, marketing and PR strategies; driving brand evolution; and utilising social and behaviour-change communication methodologies to execute impactful campaigns.



**David de Korte, chairman** David de Korte is one of the founding members of Nature Connect and has been with the organisation for nearly 25 years. David is currently working for the NPO Common Good as the Education Programme Coordinator. Previously he held the position of headmaster of Camps Bay High School. From his time as headmaster and now with Commongood, it is evident that David firmly believes in uplifting children from disadvantaged communities.



**Mike Gregor, trustee** Mike is the CEO of Rapula Farming, a business linked to several conservation initiatives across South Africa.

His business knowledge and acumen, coupled with an understanding of conservation challenges in South Africa, enables him to critically assess and guide intervention programmes that Nature Connect pursues.

For many years, Mike has served on several NPO boards involved in environmental education and community upliftment programmes.



**Stephen Granger, trustee** Stephen Granger holds degrees in land surveying and environmental studies from the University of Cape Town.

His 15-year tenure as head of the environmental management unit at Ninham Shand consulting engineers was followed by roles in the Cape Metropolitan Council, where he oversaw environmental strategy, climate policy, green infrastructure and partnerships.

Stephen is involved in distance-running journalism and trail-running administration in South Africa.

**We** are grateful to have our Board's insights and their deep understanding across multiple disciplinary areas. Their expertise in education, conservation, community development, governance, and media has helped shape our strategic direction and strengthen our programme delivery. Their ability to connect policy, practice, and public engagement has enriched our storytelling, guided our partnerships, and amplified our impact in the environmental sector.



## GOVERNANCE & RISK MANAGEMENT



Nature Connect's risk management approach is rooted in proactive identification, assessment, and mitigation of risks across financial, operational, governance, and people domains. This year's assessment draws on the latest 2025 risk register, with supporting insights from prior years, and incorporates sector best practices for adaptive management and resilience.

This past year has seen a massive increase in the use of AI and most sectors are feeling the impact of this. There is an opportunity to reduce staff workload and improve retention through the use of AI and advancing software but as AI becomes more entrenched in the way of work there is a risk of a dramatic rise in the financial cost of it.

An added concern is the instability caused by the new administration in the US which promises to create some challenges for us in developing nations and a close eye will need to be kept on this as it plays out so that we can ensure agility.

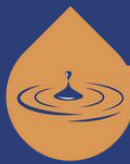




## RISK ASSESSMENT AND MITIGATION

Risk Area	Risk Factor	Mitigation
Staff	Skills	Match staff capacity (new and current) with job requirements through KPA review and alignment and regularly update personal improvement plan
	Organisational culture	Consistently engage with staff to include them in defining and taking ownership of the organisations culture - focussing on individual agency. Strong corporate culture around shared values, behaviours that reflect our ethos of caring for self and the environment
	Support	Put measures in place to support staff, institute training interventions and improve performance tracking to ensure optimal productivity and acknowledge employee contributions through recognition/reward
	Staff retention	Continuously review salaries to ensure competitiveness and institute appropriate rewards or incentives to aid staff retention such as professional development opportunities and performance-based bonuses.
	Gaps in internal communications	Foster open and transparent communication channels within the organisation, encourage ideas sharing and celebrating successes
Communications	Change management	Ensure top-down, and bottom-up communications for staff. Ensure timely, consistent, and transparent communication of changes to all stakeholders, using the most appropriate communication methods
	Stakeholder Engagement	Implement a communications strategy for internal and external stakeholders
	Reputational damage	Maintain the official communication process for all communications directed towards external stakeholders.
	Online presence	Strategically continue to increase reach and support through well-defined media and social media strategy Ensure the website unifies the programmes and showcases our complete Theory of Change.
Organizational Structure	Framework	Effectively absorb and adapt to internal and external changes and challenges, and accommodate significant growth when required
	Relevance	Engage with stakeholders to ensure that all our activities are relevant and in line with the Crèche-to-Career model Ongoing
	Strategy	Keep abreast of all global to local changes to ensure change management is well planned and managed
		Ensure effective governance to adapt and make fast decisions in the disruption and to assess opportunities and threats
		Engage in strategic planning processes that involve the board, staff, and key stakeholders to ensure unified resolve
Ensuring that those responsible for leading the change have the capabilities, authority, support and the capacity to do so		
Data	Data storage and access	Reinforce the importance of IP protection, enforce, and update a comprehensive data storage security plan for devices and online systems. Phase out all use of data storage outside of Nature Connect's Microsoft cloud
	POPIA compliance	Regularly audit data practices to ensure compliance with POPIA, and provide ongoing staff training to reinforce best practices
	Data protection	Setting of policies that that are simple, concise and practical utilising appropriate software for data protection. As far as possible, to ensure copyright/trademark with the relevant registrations.

Risk Area	Risk Factor	Mitigation
Finance	Sustainability	Identify and pursue new sources of income, with a particular focus on international donors, leveraging off our long history of good governance. Nominate a dedicated government liaison to maximise all potential local and national government funding and partnerships.
		Manage donors diligently, deliberately, thoroughly and continuously, ensuring accurate reporting and expenditure – encourage donors to act as advocates for the organization, promoting our mission and work.
		Build our fundraising strategy and increase our fundraising efforts. Take advantage of our weakening exchange rate.
		Shifting away from the donor-based dependency towards revenue generation. Ensure cost-recovery from projects where possible. Refine MOUs to clarify terms and ensure recovery of indirect costs.
		Forge local and international strategic partnerships with other NGOs, education institutions, the private and public sector – pooling resources and expertise to collectively address sustainability challenges.
		Continue to build the marketing and PR strategy to promote the Nature Connect brand and increase beneficiary awareness.
	Liabilities	Conduct a comprehensive review of vulnerabilities and exposure risks, ensuring the organization maintains appropriate and sufficient insurance coverage. Engage external experts for advice in areas such as IT, where rapid development increases risk.
	Financial Management	Ongoing review and engagement with external accounting firm with experience in NPO financial management and internal staff development. Continue to effectively manage the FINCOM meetings and outputs.
	Policy changes (governmental and private sector)	Maintain regular internal and external stakeholder engagement to apply adaptive management to rapidly adjust to uncertainty, volatility & regulatory changes eg: SARS S18A
		Seek to place Nature Connect as a leader in conservation policy development
Appoint or seek legal advice when necessary to ensure compliance		
Governance	Board Review	Consider board members or advisors with IT and legal expertise contribute to digital transformation, data privacy and regulatory compliance.
		Establish appropriate committees to assist management
	Senior Management	Succession planning and talent management. Increase mentoring and development of senior management team
	Policies and Procedures	Continue to develop and implement effective policies to provide a supportive environment for the organisation and minimising potential risks
	Liabilities	Review and update legal and registration obligations and MoUs



## CHAIRMAN'S LETTER

"In 2025, we find ourselves reaching the highest unemployment rate ever as a South African population. Sadly, most of the unemployed are young people. Against this backdrop, environmental education seems to be a lesser problem. I would say it's not less at all it's just less immediate.

Failure to look after our natural environment will have far reaching consequences for all our futures. Already in South Africa we are experiencing the effects of climate change and we see areas across the country that are running out of water.

In reality, environmental issues like these mentioned, with the additional loss of biodiversity and pollution affect everyone negatively eventually."



**DAVID DE KORTE**  
Board chair

**We** want active citizens that have agency and can make wise environmental decisions, but they need knowledge of environmental issues to be able to make informed decisions. Here is where our programmes are making their impact, literally changing lives through nature.

Our post-school programmes are enabling people not only to be informed, but to find employment in the green economy. However, I want to focus my attention in this report not so much on these programmes, but on our work that targets school-going children.

Early habits last a lifetime, so teaching children eco-friendly habits and behaviours sets them up to be environmentally-savvy adults who can make wise and informed decisions about environmental problems.

They need to be the innovators, problem solvers and environmental leaders of the future. With a focus on children, our Conservation Leadership, School Camping and Sustainable Schools programmes we are not only impacting these children but their families and communities too. Maybe even encouraging these youngsters to consider a career path into the green economy.

**I remain so excited about the work that we are doing in this space through all the Nature Connect work. Our team is ably led by Dr Anthony Roberts who has guided and directed our work for over 12 years. He is supported by an enthusiastic team who are committed to changing lives through nature.**

Our work has been made possible by our faithful and generous donors. We are so grateful to them for their ongoing support, and hope that in reading this report they are able see their contribution and to share in our joy as a team.

Finally, a word of thanks to our trustees who lead our work so faithfully. Your generous donation of time and expertise to leading and guiding Nature Connect is appreciated.

*I am sure you will all share my excitement as you read this report.*

*Nature Connect focuses on education through connecting people to nature and then transferring knowledge and skills that empower them to become stewards of nature*





## CEO'S REPORT



Dr Anthony Roberts  
CEO

As we accelerate towards our 25th anniversary it is important that we pause to reflect on our journey and to also consider the road ahead. In a time of global uncertainty we remain cautiously optimistic and steadfast in our aim of connecting people with nature and cultivating a generation of conservation stewards.

It has been a busy year for us. Our schools education programme saw over 10,000 children having a nature-based experience, over 186 teachers being capacitated in Education for Sustainable Development, and 226 environmental projects running in schools on our Sustainable Schools programme. The Sustainable Schools team ran provincial and national awards ceremonies to celebrate and acknowledge the incredible achievements of participating schools as well as our programme partners.

Our Green Skills training team conducted 64 training sessions amounting to 878 person days of training. The team also embraced the challenge of moving our accreditation from the SETAs to the QCTO.

Our continued financing of community based environmental organisations has helped eight organisations to deliver on their projects, greening the environment and building youth's passion for nature.

*This year saw us direct R1,146,000 of funds, raised through land transformation processes, directly into conservation projects in the Western Cape further strengthening our relationship with the City of Cape Town and CapeNature.*

This past year has seen an acceleration in the adoption of technology within the organisation capitalising off the suite of Microsoft products available at discounted rates to NGOs. We have benefited off this technology combined with the skills of our Media and Communications team to elevate our data capturing and analysis and communication of our impact to the public.

Whilst our work remains South Africa-focused for the time being we are guided by international resolutions such as those coming out of COP29 that underscored the urgency of climate finance, adaptation, and carbon market mechanisms. Giving rise to a Climate Unity Pact calling for \$1.3 trillion annually in climate finance by 2035, with a focus on resilience and equity.

Nature Connect aligns strongly with these outcomes, particularly the emphasis on local adaptation, youth empowerment, and nature-based solutions. Our community stewardship work and environmental education programmes directly support the global goal on adaptation and the non-market approaches outlined in Article 6.8 of the Paris Agreement.

***Our continued financing of community based environmental organisations has helped eight organisations to deliver on their projects, greening the environment and building youth's passion for nature.***

Financially, we remained disciplined. Revenue grew by over 20%, supported by diversified funding and renewed multi-year grants. Our donors remain the backbone of the organisation and their continued support is critical in enabling the work we do.

As we look ahead, we remain committed to scaling our programmes, deepening community partnerships, and contributing to global climate resilience. As Governments focus inwardly, global trade systems are upturned and fossil fuel use is perpetuated, the road to COP30 and beyond will demand bold collaboration, and Nature Connect is ready to lead with purpose.

To the Nature Connect team, trustees, partners, and donors - thank you. Your dedication fuels our mission and inspires our work. Together, we are shaping a future where nature thrives because people care.





## LOOKING FORWARD

### *Schools nature experiences ramped up*

Whilst we had the luxury of offering two facilities to our schools, Bokbaai Education Centre and the Rondevlei island campsite, for most of the year we needed to close Rondevlei Island for renovations. This has required us to ramp up the number of camps we conduct at Bokbaai and figuring out new systems that accommodate more frequent groups.

Although Rondevlei is unlikely to come back online till 2027 we are greatly appreciative and fortunate to have a world class facility at Bokbaai to continue exposing children to nature **(see page 28 for more)**.

### *Sustainable Schools embracing of tech*

This year has provided interesting challenges and steep learning curves for the team as they looked to improve the functionality and offerings of the online hub, requiring a total rebuild. This is in line with our desire to scale up the programme, to reach more teachers in South Africa and lay the foundation for expansion beyond our borders.

Tailoring our approach to our engagement with schools and partners whilst recognising the most effective way to offer support whilst scaling up with limited resources will continue to be an ongoing challenger. **(see page 39 for more)**.

### *Green Skills aims for nationwide partnerships*

This year saw our Green Skills Development training team placing interns at multiple sites in various provinces through South Africa. We plan on continuing to build on these newly established partnerships and expanding the rollout of our training courses beyond Cape Town.

**Our community stewardship work and environmental education programmes directly support the global goal on adaptation and the non-market approaches outlined in Article 6.8 of the Paris Agreement.**

Our challenge going forward is the ongoing development and implementation of training programmes that generate graduates with the skills and knowledge that the sector needs. **(see page 49 for more).**

*Nature Care Fund to establish more projects*

Critical to the sustainability of the work of Nature Care Fund is the expansion of our model of community-funded conservation activities – these take the form of City Improvement District (CID) agreements as well as conservation management agreements linked to property ownership.

In a city as biodiverse as Cape Town, with all its social and infrastructural challenges, innovative funding models are likely the most sustainable approach to urban conservation activities. Through sound, legal structures we will be looking to increase the number of contributing bodies in the coming year **(see page 58 for more).**



*“As we look ahead, we remain committed to scaling our programmes, deepening community partnerships, and contributing to global climate resilience.” - **Dr Anthony Roberts***





## FINANCIALS

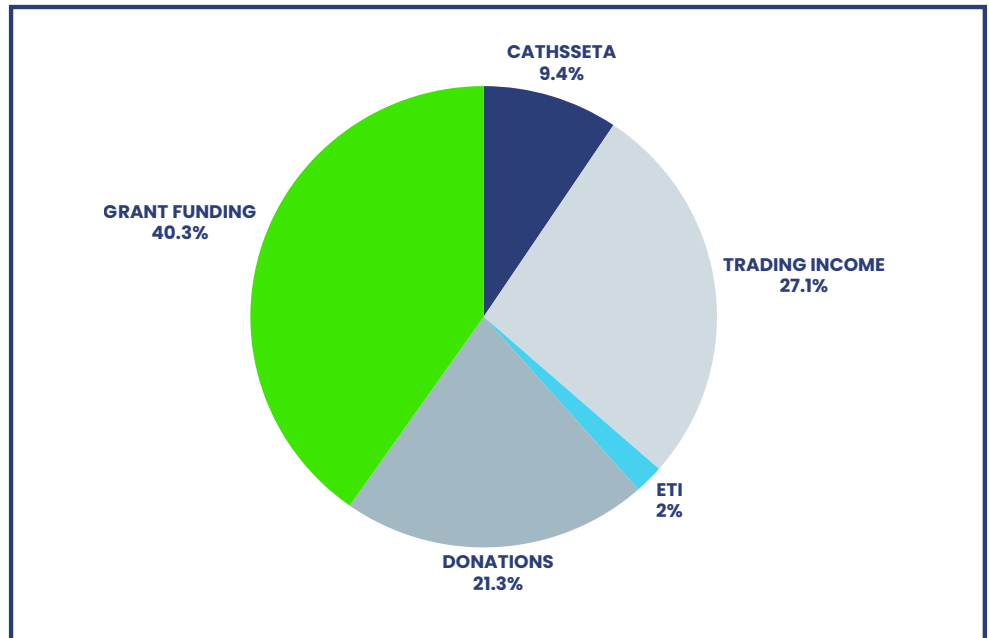
### Funding and sustainability

Nature Connect's financial year closed on 28 February, with the 2025 reporting cycle reflecting a full twelve months of activity. The income stream breakdown continues to show stability, with the majority of funding sourced from a consistent pool of regular donors, complemented by a 3.6% growth in trading income.

### Increasing donor income

This year saw 10 main donors contributing 56% of Nature Connect's income, mirroring the previous year's donor concentration. The weak Rand continues to offer opportunities to leverage smaller international donations, however the geopolitical instability and increasing demand for funding globally are significant challenges.

### BREAKDOWN OF ORGANISATIONAL INCOME STREAMS



## Increasing revenue-generating activities:

Trading income accounted for 27% of total income in 2025, reflecting a continued shift towards a social-enterprise mindset. Revenue was generated through fee-paying school camps, private landowners and developers for the Nature Care Fund and private companies and individuals for Green Skills training.

## Strategic Financial Overview:

In September 2024, Nature Connect convened its first FINCOM committee, chaired by Peter Magner of Iridium Business Solutions with board member Mike Gregor, CEO Anthony Roberts and Operations Manager Linda Wilson forming the rest of the committee.

This has been exceptionally valuable as the organisation continues to grow in both size and complexity, and important outcomes include real time expense tracking against budgets, expanded management accounts giving programme managers access to rich financial data, and comprehensive cashflow forecasting.

**From the AFS:** *Nature Connect (Registration number IT416/2001) Annual Financial Statements for the period ended 28 February 2025*

## OPINION

We have audited the financial statements of Nature Connect Trust set out on page 8 to 18, which comprise the statement of financial position as at 28 February 2025, statement of comprehensive income, statement of changes in funds and statement of cash flows for the year then ended, and the notes to the financial statements, including a summary of significant accounting policies.

In our opinion, except for the possible effect of the matter described in the basis for qualified opinion section of this report, the annual financial statements present fairly, in all material respects, the financial position of Nature Connect Trust as at 28 February 2025, and its financial performance and cash flows for the year then ended in accordance with the IFRS for SMEs Accounting Standard as issued by the International Accounting Standards Board and the requirements of the Trust Deed.

## BASIS FOR QUALIFIED OPINION

In common with similar organisations it is not feasible for the Trust to institute accounting control over cash collections from donations prior to initial entry of the collections in the accounting records. Accordingly, it is impractical for us to extend our examination beyond the receipts actually recorded.

We conducted our audit in accordance with International Standards on Auditing. Our responsibilities under those standards are further described in the Auditor's Responsibilities for the Audit of the Financial Statements section of our report. We are independent of the Trust in accordance with the Independent Regulatory Board for Auditors' Code of Professional Conduct for Registered Auditors (IRBA Code) and other independence requirements applicable to performing audits of financial statements in South Africa. We have fulfilled our other ethical responsibilities

In accordance with the IRBA Code and in accordance with other ethical requirements applicable to performing audits in South Africa. The IRBA Code is consistent with the corresponding sections of the International Ethics Standards Board for Accountants' International Code of Ethics for Professional Accountants (including International Independence Standards). We believe that the audit evidence we have obtained is sufficient and appropriate to provide a basis for our opinion.

## OTHER INFORMATION

The trustees are responsible for the other information. The other information comprises the Trustees' Report and the supplementary information as set out on pages 19 to 20, which we obtained prior to the date of this report.



The other information does not include the annual financial statements and our auditor's report thereon. Our opinion on the annual financial statements does not cover the other information and we do not express an audit opinion or any form of assurance conclusion thereon. In connection with our audit of the annual financial statements, our responsibility is to read the other information and, in doing so, to consider whether the other information is materially inconsistent with the annual financial statements or our knowledge obtained in the audit, or otherwise appears to be materially misstated. If, based on the work we have performed, we conclude that there is a material misstatement of this other information, we are required to report that fact. We have nothing to report in this regard.

### **RESPONSIBILITIES OF THE TRUSTEES FOR THE ANNUAL FINANCIAL STATEMENTS**

The trustees are responsible for the preparation and fair presentation of the annual financial statements in accordance with the International Financial Reporting Standard for Small and Medium-sized Entities and the requirements of the Trust Deed, and for such internal control as the trustees determine is necessary to enable the preparation of annual financial statements that are free from material misstatement, whether due to fraud or error.

*In preparing the annual financial statements, the managing agent engage with the trustees in assessing the Trust's ability to continue as a going concern, disclosing, as applicable matters related to going concern and using the going concern basis of accounting unless the trustees either intend to liquidate the Trust or to cease operations, or have no realistic alternative but to do so.*

### **AUDITOR'S RESPONSIBILITIES FOR THE AUDIT OF THE FINANCIAL STATEMENTS**

Our objectives are to obtain reasonable assurance about whether the annual financial statements as a whole are free from material misstatement, whether due to fraud or error, and to issue an auditor's report that includes our opinion. Reasonable assurance is a high level of assurance, but is not a guarantee that an audit conducted in accordance with International Standards on Auditing will always detect a material misstatement when it exists. Misstatements can arise from fraud or error and are considered material if, individually or in the aggregate, they could reasonably be expected to influence the economic decisions of users taken on the basis of these annual financial statements.

As part of an audit in accordance with International Standards on Auditing, we exercise professional judgement and maintain professional scepticism throughout the audit. We also:

- Identify and assess the risks of material misstatement of the annual financial statements, whether due to fraud or error, design and perform audit procedures responsive to those risks, and obtain audit evidence that is sufficient and appropriate to provide a basis for our opinion. The risk of not detecting a material misstatement resulting from fraud is higher than for one resulting from error, as fraud may involve collusion, forgery, intentional omissions, misrepresentations, or the override of internal control.

- Obtain an understanding of internal control relevant to the audit in order to design audit procedures that are appropriate in the circumstances, but not for the purpose of expressing an opinion on the effectiveness of the Trust's internal control.
- Evaluate the appropriateness of accounting policies used and the reasonableness of accounting estimates and related disclosures made by the trustees.
- Conclude on the appropriateness of the trustees' use of the going concern basis of accounting and based on the audit evidence obtained, whether a material uncertainty exists related to events or conditions that may cast significant doubt on the Trust's ability to continue as a going concern.
- If we conclude that a material uncertainty exists, we are required to draw attention in our auditor's report to the related disclosures in the annual financial statements or, if such disclosures are inadequate, to modify our opinion. Our conclusions are based on the audit evidence obtained up to the date of our auditor's report. However, future events or conditions may cause the Trust to cease to continue as a going concern.
- Evaluate the overall presentation, structure and content of the annual financial statements, including the disclosures, and whether the annual financial statements represent the underlying transactions and events in a manner that achieves fair presentation. We communicate with the trustees regarding, among other matters, the planned scope and timing of the audit and significant audit findings, including any significant deficiencies in internal control that we identify during our audit.

*LPH*  
LPH Chartered Accountants Inc.  
Registered Auditors  
Per: ER Livesey  
Director  
Chartered Accountant (SA)  
Registered Auditor





## EXPENSE MANAGEMENT

Operating and project expenses for the year totalled R18,471,972 (2024: R15,481,145 for 11 months). The increase in operating and project expenses from YE2024 to YE2025 is 9.4% after adjusting for the extra month, reflecting real growth in expenditure rather than just the longer reporting period.

This aligns with increased activity and inflation. The YE2024 provision for doubtful debt has been reversed as the debtor has been adhering to the payment schedule.

Nature Connect incurred a deficit of R201,764 for the year (2024: deficit of R142,276 for 11 months). The deficit is attributed to increased project and operating expenses aligned with organisational growth and strategic expansion.

STATEMENT OF COMPREHENSIVE INCOME	2025	2024 (11 months)
<b>Total Income</b>	<b>18 270 208</b>	<b>15 338 869</b>
Expenses	18 471 972	-15 481 145
<b>Total</b>	<b>-201 764</b>	<b>-142 276</b>
<b>ASSETS</b>		
<b>Non-current Assets</b>		
Property plant and equipment	968 875	1 320 499
<b>Current Assets</b>		
Trade and other receivables	3 075 094	3 559 162
Other financial assets	2 177 817	1 983 779
Cash and cash equivalent	4 053 356	5 648 934
<b>Total</b>	<b>10 275 142</b>	<b>12 512 374</b>
<b>FUNDS AND LIABILITIES</b>		
<b>Funds</b>		
Accumulated funds	612 974	463 115
Asset Fund	968 875	1 320 499
<b>Total</b>	<b>1 581 489</b>	<b>1 783 614</b>
Non-current liabilities	266 659	472 249
<b>Total</b>	<b>266 659</b>	<b>472 249</b>
<b>Current liabilities</b>		
Trade and other payables	146 294	252 865
Funds for long term projects	3 558 654	2 027 360
Deferred income	4 376 380	5 376 243
Provisions	345 303	2 600 043
<b>Total</b>	<b>8 426 631</b>	<b>10 256 511</b>
<b>TOTAL FUNDS AND LIABILITIES</b>	<b>10 275 139</b>	<b>12 512 374</b>



## PROGRAMME REPORTS

### **Connect to Nature:**

Urbanisation and screen time are disconnecting Cape Town's youth from nature, leading to Nature Deficit Disorder (NDD).

### **Sustainable Schools:**

Environmental education is essential, but teachers lack the resources and time to integrate it effectively.

### **Green Skills Development:**

Youth unemployment remains critically high, with financial barriers limiting access to further education and career pathways.

### **Nature Care Fund:**

The planet faces a biodiversity crisis, with mass species loss and rising temperatures requiring urgent conservation action.

Nature Connect's four core programmes respond to distinct environmental and social challenges:



Approximately 52% of children spend less than two hours per day playing outdoors, contributing to Nature Deficit Disorder.



Teachers face challenges in integrating environmental education due to a lack of resources and curriculum support.



Youth unemployment in South Africa stands at 44.6%, highlighting the need for skills development.



Human activities have led to significant biodiversity loss in Africa.

*Read on to see how our individual programmes address these problems, tackling urgent challenges in 2025, creating meaningful impact, and laying foundations for long-term sustainability.*



## STAKEHOLDER MAP



-  Greenskills
-  Nature Care Fund
-  Connect to Nature
-  Sustainable Schools

Nature Connect's stakeholder map spans eight provinces, with each of our four core programmes engaging communities in distinct ways. Sustainable Schools connects with educators through an Online Hub, workshops, and national competitions, with active school participation in the Western Cape, Gauteng, Limpopo, KwaZulu- Natal, Free State and Northern Cape. Connect to Nature delivers immersive nature experiences to learners through camps and excursions in the Western Cape. GreenSkills supports young adults with training in the Western Cape and internship placements in the Western Cape, KwaZulu-Natal, Gauteng, North-West Province, and Eastern Cape. Nature Care Fund works with landowners and community partners to support biodiversity stewardship and conservation action, particularly in the Western Cape and Northern Cape. This footprint reflects Nature Connect's commitment to locally rooted, nationally relevant impact.



## ENVIRONMENTAL & SOCIAL IMPACT

Nature Connect's mission aligns with the UN Sustainable Development Goals (SDGs) through four core programmes that drive local action with global relevance.

Together, these programmes form a pipeline that begins with early nature exposure, progresses through skills development, and leads to employment and stewardship.

This integrated approach drives Nature Connect's vision and contributes to South Africa's progress on the SDGs.

**Green Skills** addresses unemployment and skills shortages by offering accredited training and job placement for youth from underserved communities. It supports SDGs 1, 4, 8, 13, and 15.

**Nature Care Fund (NCF)** places trained youth in conservation roles across Cape Town. It strengthens urban biodiversity and ecosystem restoration, contributing to SDGs 11, 13, 15, and 17.

**Connect to Nature (C2N)** introduces children and youth to nature through camps and mentorship. It promotes wellness, inclusive access, and climate literacy, advancing SDGs 3, 4, 5, 10, 13, 15, and 17.

**Sustainable Schools** integrates sustainability into education, empowering learners and educators to act on water, energy, waste, and biodiversity challenges. It supports SDGs 3, 4, 6, 7, 11, 12, 13, 14, 15, and 17.





Goal 1: No Poverty

Goal 9: Innovation and infrastructure



Goal 2: Zero Hunger

Goal 10: Reduced inequalities



Goal 3: Good health and wellbeing

Goal 11: Sustainable cities and communities



Goal 4: Quality Education

Goal 12: Responsible consumption and production



Goal 5: Gender Equality

Goal 13: Climate Action



Goal 6: Clean water and sanitation

Goal 14: Life below water



Goal 7: Affordable and clean energy

Goal 15: Life on Land



Goal 8: Decent work and economic growth

Goal 16: Peace, justice and strong institutions



Goal 17: Partnerships for the goals





*"Growing future  
leaders by  
connecting young  
minds to nature,  
one learning  
experience at a  
time."*



**CONNECT TO NATURE**



## THE PROBLEM WE ADDRESS

Cape Town is known for its iconic UNESCO World Heritage Sites such as Table Mountain and Robben Island. Yet the region's rich biodiversity, especially the Cape Floristic Region with its many endemic plant species, receives far less attention.

Despite this natural abundance, many young people in urban areas grow up disconnected from the environment. This growing gap is referred to as Nature Deficit Disorder (NDD), a condition linked to excessive screen time, reduced outdoor play due to safety concerns, and limited access to nature.

NDD affects physical health, emotional wellbeing and behaviour. These impacts are especially severe in under-resourced communities, where children have fewer opportunities to explore, learn from, and connect with the natural world. Without these experiences, their sense of environmental responsibility and curiosity is diminished.

Addressing this disconnect is essential to building a generation that values nature and is equipped to protect it.

## HOW DO WE SOLVE THIS?

The Connect to Nature Programme tackles the growing problem of children becoming disconnected from nature, especially in under-resourced urban areas. Many young people in Cape Town have little access to green spaces or environmental education.

We rebuild that connection through meaningful, accessible experiences in nature. These include in-school lessons, day trips, overnight camps, and a long-term Conservation Leadership Project. Each step is curriculum-aligned, mentor-led, and focused on building ecological understanding and personal growth.

Learners progress from classroom activities to immersive outdoor experiences, applying what they learn in real life. Those who show deeper interest can join the seven-year leadership project to develop environmental knowledge, leadership, and social awareness.

We remove barriers by providing sponsored access, meals, and dedicated mentors. This ensures all learners can take part, regardless of background.

This approach inspires a lifelong connection to nature, helping raise a generation of environmentally conscious leaders.

***Learners progress from classroom activities to immersive outdoor experiences, applying what they learn in real life***

The past year, the programme has taken the following actions:



1 552 learners reached through overnight camp



8 453 learners reached through day programmes



Equity Focus: 86% of groups from under-resourced communities and schools



Conservation Leaders took part in 33 activities that built biodiversity awareness among 71 leaders

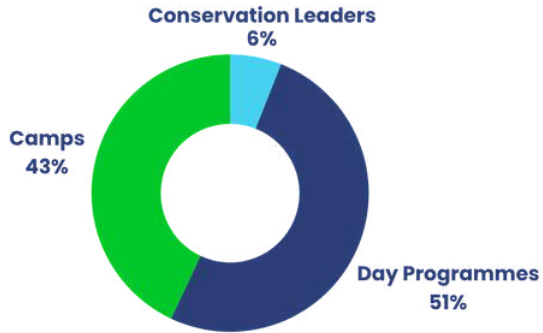


*Your support can help create life-changing outdoor experiences for learners, bringing nature to life through camps, adventures, and hands-on exploration.*

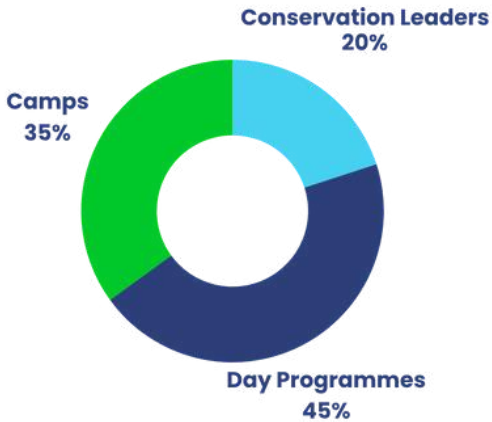
**African Penguin Awareness Day with Levana Primary School at Seaforth Beach**



### Percentage breakdown of 80753 educational impact hours



### Programme Interactions - Percentage breakdown of 141 interactions



*"Leadership in conservation is about creating spaces where nature thrives and people feel connected. It's a quiet strength that inspires action and builds a future rooted in care."*

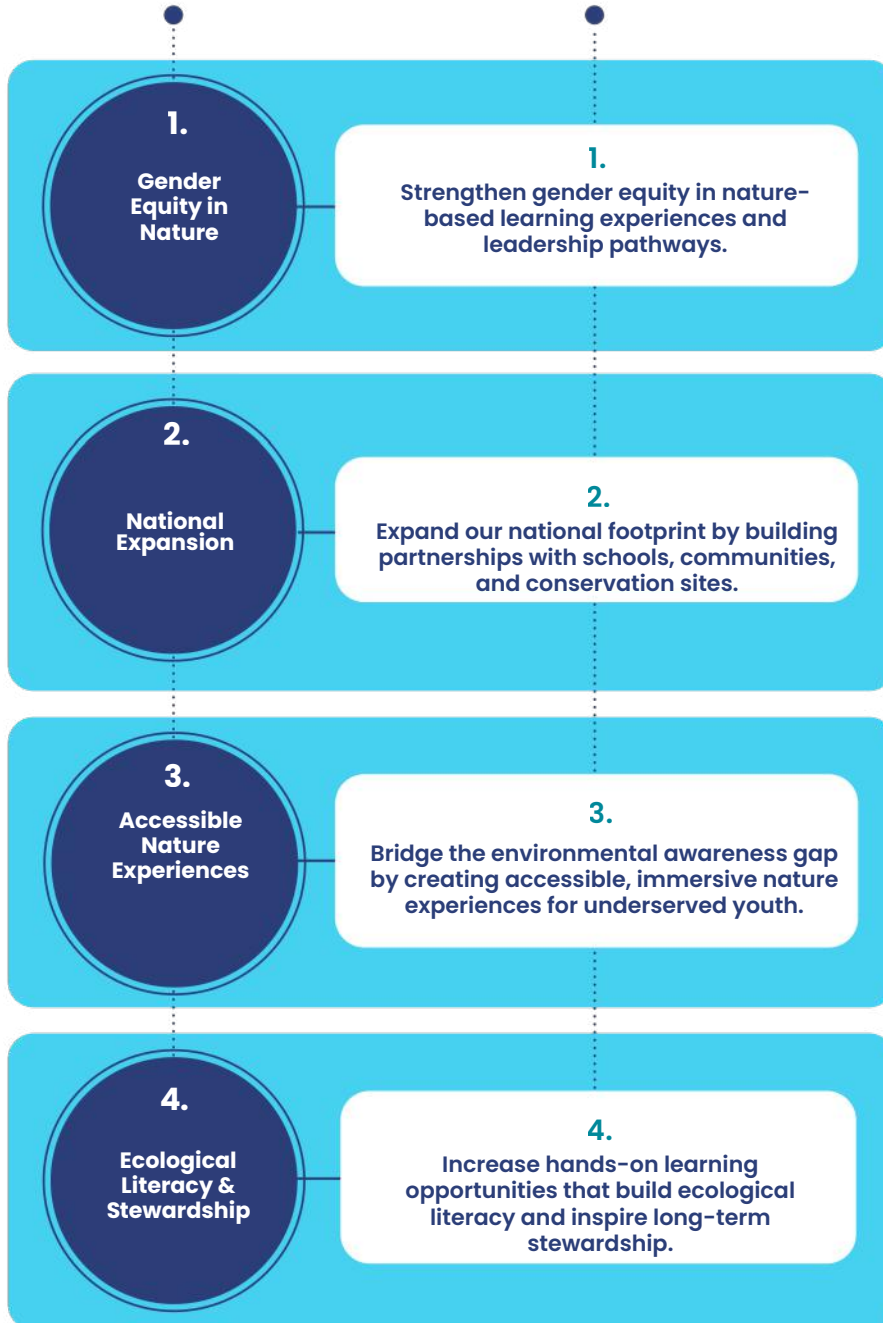
1443

THE NUMBER OF EDUCATIONAL HOURS WE'VE ACHIEVED THIS YEAR

# STRATEGIC TARGETS AND IMPACTS

## Strategic Targets

## Action and Impact





## PROJECT LEAD TESTIMONIAL

I'm incredibly proud of what our small but dedicated team has achieved. With limited resources and capacity, we've worked tirelessly to create meaningful opportunities for young people to connect with nature and grow as individuals.

Our overnight camps form the heart of the programme, but they're part of a much broader offering. Through day excursions, learners get to explore natural areas and engage in hands-on, experiential learning—often stepping into nature for the very first time. Our school-based lessons bring nature into the classroom, using practical activities to make environmental learning more accessible and relevant.

Our Conservation Leaders Project nurtures a deeper understanding of sustainability, leadership, and social responsibility. Watching learners grow year after year, developing both their environmental awareness and their confidence as young leaders, has been one of the most rewarding aspects of this work.

Despite the challenges, our team's passion and commitment have made it possible to reach thousands of learners and create real, lasting impact. I'm honoured to be part of a programme that is not only changing lives, but also planting the seeds of a more sustainable and hopeful future.

## FUTURE GOALS:



**Expand the programme to reach more schools and underserved communities across the Western Cape, where learners have limited access to nature-based education.**



**Expand the Conservation Leadership Project to more schools and increase annual intake numbers, offering this impactful opportunity to a broader group of learners**



**Increase capacity at our campsites, allowing us to host more learners at once and accommodate a wider variety of groups.**



**Align content with the national curriculum and boost programme relevance through interactive, hands-on learning tools and classroom resources.**



*Tammy - Lee Solomons  
Manager, Student Education*



## OVERNIGHT CAMPS – RECONNECTING YOUTH WITH NATURE

*Rocky Shores with Mamre Primary School at Bokbaai*



*Our camps provide an immersive, nature-based experience that reconnects youth with the outdoors—often for the first time. By reaching these learners, the programme opens up new worlds of discovery, learning, and growth.*

*These experiences not only foster a deeper appreciation for nature but also build confidence, hope, and a sense of environmental stewardship, offering young people a positive alternative to the challenges they face in their everyday lives.*

Our overnight camps offer a unique opportunity for youth to reconnect with nature through hands-on conservation experiences, outdoor exploration, and eco-friendly fun. These camps provide an ideal setting for outdoor and experiential learning, creating a diverse and educational experience that inspires curiosity and deepens understanding of the natural world.

Open to schools, universities, scouts, and community groups across Cape Town and surrounding areas, the programme aligns with the school curriculum, delivering relevant conservation knowledge that complements classroom learning.

These programmes address the growing disconnect between urbanised youth and the natural environment. Many young people in under-resourced areas have limited access to safe, green spaces and outdoor learning opportunities. Surrounded by daily social challenges such as poverty, crime, and limited recreational facilities, they are often cut off from nature and the life-changing experiences it can offer.

**These programmes address the growing disconnect between urbanised youth and the natural environment.**



*Bringing Lessons to Life with Levana Primary School*

Our approach combines hands-on conservation activities, outdoor learning, and engaging environmental education to cultivate a deep appreciation for nature. Each camp experience is designed not only to build environmental knowledge but also to support personal growth—encouraging confidence, teamwork, leadership, and a lasting sense of environmental stewardship.

**Over the past year, we conducted 50 overnight camps, reaching a total of 1,552 youths.**

The impact of our overnight camps has been both meaningful and far-reaching. Of the 50 camps held, 88% were with youths from under-resourced communities. 72% of participating groups rated the programme content as excellent, with a further 24% and 4% rating it as very good and good, respectively.

One of the key lessons is the importance of strong relationships and consistent communication with stakeholders. Building and maintaining partnerships with schools, educators, and programme sponsors has been essential to the successful planning and delivery of each camp. Another important takeaway is the need to strengthen our footprint within the WCED space.

Establishing closer ties with the WCED could help us align more closely with departmental priorities, gain greater recognition for the value of outdoor learning, and ultimately open the door for more schools

“

Amazing programme that inspired our learners to self-reflect and become more aware of their surroundings and the impact that they have on others and their environment. Food was amazing and delicious. Kitchen was clean and tidy.

Facilitators are all amazing and dynamic, each bringing their own special magic to our experience. The venue was clean, neat and accommodated our needs. Our gratitude to all the organisers and sponsors.

*Thank you for making our stay memorable and fun.*

**- AZ BERNAM PRIMARY SCHOOL, MITCHELLS PLAIN**

”



## **This Programme is made possible by:**

Mapula Trust, Leisure Charitable Trust, 476 Charitable Trust, Rolf-Stephan Nussbaum Foundation, Hans Hoheisen Charitable Trust, GrandWest, Chadwick School, Table Mountain Fund

### **Supporting the Connect to Nature Programme is an investment in the future of South Africa's youth and our environment.**



**We inspire environmental responsibility by helping learners understand challenges and adopt sustainable practices at school, home, and in their communities.**



**Equitable Access for All: Ensuring no child is left out due to financial limitations.**



**Hands-On Conservation Education: Learners don't just hear about the environment—they experience it.**



**We develop young leaders who are environmentally conscious and socially aware, ready to drive positive change in their communities and beyond.**



**Support holistic youth development through workshops and outdoor activities that build teamwork, leadership, problem-solving, and self-awareness.**



**Our 7-year Conservation Leadership Project provides long-term impact through sustained learning, mentorship, and leadership development.**

*We invite you to partner with us in growing this impactful programme. Your support can help more youth access these experiences*

## Meet our Connect to Nature Team





**"When sustainability becomes part of the school culture, every lesson matters."**



# **SUSTAINABLE SCHOOLS**



## THE PROBLEM OUR PROGRAMME ADDRESSES

South Africa faces urgent environmental challenges, worsened by unsustainable practices and limited public awareness. Building environmental literacy is essential, yet many schools struggle to integrate Environmental Education (EE) and Education for Sustainable Development (ESD) into the curriculum.

### Teachers face key barriers:

- Limited access to curriculum-aligned resources
- Inadequate training and support
- Pressure to focus on examinable content

**The Sustainable Schools Programme bridges this gap by equipping educators with tools, curriculum-aligned content, and ongoing support.**

It empowers teachers to embed EE and ESD into everyday learning, helping learners develop environmental awareness and the skills to lead change in their communities.

## HOW DO WE SOLVE THIS?

The Sustainable Schools Programme provides a practical, scalable approach to integrating Environmental Education (EE) and Education for Sustainable Development (ESD) into schools, equipping educators with the tools and support needed to embed sustainability into learning and school culture.

At the core of the programme is a hybrid model that combines a dynamic online platform with direct, personalised engagement, ensuring accessibility while remaining contextually relevant. The Sustainable Schools Hub serves as a centralised portal where teachers can find curriculum-aligned resources and structured sustainability planning through the School Environmental Management Plan (SEMP). The SEMP allows schools to plan, act, reflect, and adapt their sustainability efforts, ensuring continuous progress. This digital foundation is reinforced by School Coordinators, who provide tailored support, guide progress, and foster connections with local sustainability partners.

Beyond digital tools, the programme emphasises hands-on experiences that bring sustainability to life. Schools can engage with local partner organisations to facilitate lessons, excursions, and camps, enriching environmental learning. Additionally, SACE-endorsed teacher workshops, co-facilitated by these partners, provide educators with practical insights and applied learning, deepening their understanding of environmental challenges and solutions.

To sustain motivation and celebrate progress, the programme hosts annual rewards ceremonies that recognise outstanding schools for their sustainability achievements. In February 2025, ceremonies were held in KwaZulu-Natal and in a combined Limpopo/Gauteng regional event, celebrating schools that demonstrated exceptional commitment to sustainability in education. These gatherings foster a sense of pride and community engagement.

Through this holistic approach, the Sustainable Schools Programme not only equips educators with the means to integrate EE/ESD into learning but also empowers students to become environmentally literate and action-oriented citizens. By embedding sustainability into the school system, the programme lays the groundwork for systemic change, driving a future where environmental consciousness and responsible resource management are fundamental pillars of education.

The past year, the programme has taken the following actions:



**Over 518 Teachers trained** in environmental education workshops across South Africa.



**Over 670 Action Projects led by schools**, including permaculture, recycling, and water-saving initiatives.



**2513+ Educational Resource downloads** from the Sustainable Schools Hub.



**Partnered with 29 like-minded organisations**, growing our support network by 5 key partners.



## Recognition

In November 2024, the programme received the SANParks Kudu Award for Environmental Education, recognising its innovation, impact, and contribution to advancing sustainability in South African schools. This national accolade affirmed the value of our blended approach and the dedication of our team and partners across the country.

De La Salle Holy Cross College,  
Trashion Show



# 1 476

THE NUMBER OF EDUCATIONAL HOURS  
WE'VE ACHIEVED THIS YEAR



By investing in the education and empowerment of educators, we can ensure that environmental protection and sustainable development become integral parts of the educational system, driving positive change both in the short term and for future generations.



## PROJECT LEAD TESTIMONIAL

This year has been about clarifying and refining the Sustainable Schools strategy, and then putting it into practice. Drawing on lessons learned, the team crafted a forward-looking roadmap that lays the groundwork for our next phase of growth.

We immediately set those plans in motion: accelerating the redevelopment of the Sustainable Schools Hub and turning the long-imagined Regional Rewards Roadshow into reality.

Celebrating the achievements of outstanding Sustainable Schools nationwide has renewed our momentum, inspiring us to deliver even more impactful support for teachers and schools.

Watching the team go the extra mile, giving their all to the programme's success, has been my proudest moment.

With our strategy bedded down and early milestones achieved, I am more confident than ever that Sustainable Schools is positioned for lasting success.

## FUTURE GOALS:



**Upgrade the Sustainable Schools hub** with gamified challenges, structured learning, an enhanced resource library, and improved networking—driving engagement and national scale-up.



**Equip 360+ South African teachers** with SACE-endorsed training, online modules, and personalised coaching, advancing environmental and sustainability education.



**Support 180+ school-led sustainability projects** annually with coaching and community engagement, celebrating excellence at our national rewards ceremony to inspire further action.



**Expand school participation by 25%**, prioritizing underserved provinces through digital campaigns, direct outreach, and provincial support.



*Jocelyn Anderson: Manager,  
Sustainable Schools*



## Food Gardens: Cultivating Learning and Community

**Limpopo:** Ithuteng Lower Primary School's expanding vegetable plot now supplies the school's feeding scheme and generates income through the selling of surplus produce locally. The project has sparked a ripple effect: learners have begun home gardens that parents continue to grow, helping reduce household food costs. **Gauteng:** Ntokozweni Primary School's vegetable garden has grown to include three greenhouses.

**Harvests** supply the school feeding scheme, are sold to fund garden upkeep, and are donated to families in need.



*Ntokozweni Primary School's vegetable garden*

**KwaZulu-Natal:** Danville Park Girls' High Schools' Environmental monitors manage a medicinal garden and covered vegetable tunnel, handling watering and weeding alongside their studies.

**Produce** supplements the tuck-shop, and garden tasks feed into PE classes that promote healthy lifestyles. Danville's integrated approach to food, fitness and learning earned 1st prize for the Health & Well-being Focus Area (2024) and contributed to the school being crowned the region's Most Sustainable School 2024.



*Ntokozweni Primary School's learners and their harvest*



*Ithuteng Lower Primary School Learners Planting their garden*



## Water Wise Schools: Practical Innovation in Action

St James RC Primary School (**Western Cape**) placed water displacement bottles in toilet cisterns, reducing about a litre per flush, and links its weekly “Sea School” lessons and regular beach clean-ups to the wider message that freshwater conservation protects coastal ecosystems too.

Chumana Primary School in **Limpopo** re-engineered its hand-washing stations, so grey water irrigates lawns.

In **KwaZulu-Natal**, Corrie-Lynn Primary School has re-introduced Tippy Taps and now save an estimated 8 ½ JoJo tanks of water every year. Learner monitors collect usage data of their taps, ensuring the system runs efficiently and consistently.

Manor Gardens Primary School tackled high municipal bills by plumbing 19 JoJo tanks directly into bathroom cisterns.



*Corrie-Lynn Primary School Learners reminding each other to save water.*

“ The school also hosted World Water Week celebrations to engage learners and the community in water-saving initiatives. ”



*St James Primary School, learners engaging in lessons about the Ocean*



*Chumana Primary School celebrating world water week.*

**This Programme is made possible by the following donors:**

Allan & Gill Gray Philanthropies, Dower DCAP Advisory Fund, Mapula Trust,  
and Leisure Charitable Trust.

**We're looking for partners who can help scale impact through:**



**Co-hosting teacher workshops or offering expertise to build educator capacity in EE/ESD.**



**Sharing educational resources for the Online Hub and accessing quarterly usage data**



**Guiding school-based Action Projects by contributing physical resources or professional expertise.**



**Sponsoring school registration fees or contributing financially towards school's sustainability initiatives.**



**Delivering in-school experiences like lessons, assemblies, or career talks linked to sustainability.**



**Enabling nature-based learning through excursions, camps, Action Days, or by supporting our national Rewards Ceremonies.**

*Support the Sustainable Schools Programme and help equip educators with the tools and training they need to inspire the next generation of environmentally conscious leaders.*

## Meet our Sustainable Schools Team





**“Skills development  
is a bridge between  
environmental action  
and sustainable  
livelihoods.”**



# **GREEN SKILLS**

# **TRAINING & DEVELOPMENT**



## THE PROBLEM OUR PROGRAMME ADDRESSES

Youth unemployment in South Africa has reached crisis levels, with the official rate climbing to 46.1% in the first quarter of 2025.

Among the young jobseekers, unemployment has surged to 62.4% with over 3.5 million young people remaining disconnected from employment, education, or training (NEET), reflecting deep barriers to both learning and equitable work.

Access to affordable, quality education in the nature conservation and biodiversity field remains extremely limited. Many young South Africans who aspire to enter the green economy face prohibitive tuition costs, scarce training placements, and inadequate pathways from learning to employment. This education gap compounds unemployment, leaving talent untapped and communities underserved.

The biodiversity sector, is positioned to grow at an average of 10% per annum through to 2030, according to the National Biodiversity Economy Strategy but this requires a ready workforce skilled and experienced in conservation, and ecological infrastructure management.

Without targeted investment in accredited learnerships, internships, and industry-relevant training, the sector cannot meet its growth potential nor absorb the millions of unemployed youth eager to drive a greener tomorrow.

## HOW DO WE SOLVE THIS?

The Nature Connect's Green Skills Training and Development Programme streamlines entry into the green economy by offering year-long, fully accredited learnerships and graduate internship programmes as pathways into employment, education or further training.

In the past year, the Green Skills Team has conducted six learnership programmes and two graduate internship programmes.

The learnership programmes enrolled 65 participants; giving 52 unemployed and 13 employed learners access to nature conservation qualifications (NQF level 2 or level 4). The unemployed youth further received a suite of skills training courses, workplace mentorship and work-based experience at relevant host sites. Of the six learnership programmes offered: two were funded by CATHSSETA, three were run in partnership with Quemic Africa, and one, the River Warden programme, was an initiative with the City of Cape Town.

Nature Connect ran two graduate internship programmes – 19 interns funded by CATHSSETA and 10 through SANBI's Groen Sebenza initiative. All participants attended short skills training programmes, workplace mentorship, and received hands-on experience. Impressively, every Groen Sebenza intern secured employment post-programme, with three staying on at Nature Connect—two of them, Emma Langtry and Braden Ingram, now serving in the Green Skills team.

In the last financial year, Nature Connect launched four industry-informed short courses: Conflict Management, River Guard Water Safety Training, River Erosion Control Management and Nature Enthusiast Training—and rolled out two accredited qualifications: Contribute to the Suppression of Wildfires at Basic Firefighter Level and the National Certificate: Nature Conservation – Resource Guardianship (NQF 2). This expansion cements Nature Connect's accreditation with CATHSSETA, AGRISSETA and more recently, the Quality Council for Trades and Occupations (QCTO).

We are delighted to report that our direct training hours, totalling 22,750, have increased by 53% on the previous financial year. We also see increases in the environmental impact hours of 65,132 (24.4%) and educational impact hours of 28,256 (10%). This was achieved through the delivery of 39 individual short skills courses and five qualification programmes presented to 152 participants.

Through the accredited and industry-informed programmes, Nature Connect has directly bridged South Africa's green-skills gap and created clear pathways into conservation careers for youth facing the NEET crisis.

The past year, the programme has taken the following actions:



Over 152 youth trained in short courses

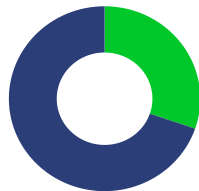


29 individuals placed on internships



65 individuals placed on Learnerships

#### TOTAL ENVIRONMENTAL & EDUCATIONAL IMPACT HOURS



Educational Impact Hours  
28257

Environmental Impact Hours  
65132

#### Chainsaw training with River Wardens



Help us scale this impact! Partner with us to fund learnerships, host interns, or provide industry mentorship.

# STRATEGIC TARGETS AND IMPACTS

## Strategic Targets

## Action and Impact

1.

Expand our national footprint and grow partnerships

1.

Programmes expanded to three new provinces: Eastern Cape, KwaZulu-Natal, Gauteng

2.

Increase capacity-training opportunities in the environmental sector for historically disadvantaged, unemployed youth

2.

39 individual short skills courses and five qualification programmes presented to 152 participants.

3.

Foster growth for biodiversity conservation by breaching the skills gap in the sector

3.

Rolled out two accredited qualifications: Contribute to the Suppression of Wildfires at Basic Firefighter Level and the National Certificate: Nature Conservation – Resource Guardianship (NQF 2)

4.

Grow gender equity in the conservation sector

4.

+50% female participation achieved in most courses



## PROJECT LEAD TESTIMONIAL

Green Skills has come a long way since its inception a few years ago.

From having a presence mainly in the Western Cape, we have now expanded our host site network to six different provinces and increased our number of available host sites to be able to take on more passionate graduates and learners from across our country.

The programme is poised to be a forerunner of skills development within the nature conservation sector offering industry relevant courses which have increased to now include River Erosion Management, People in Conservation and Herbicide applicator with a few more on the way!

Our focus for the next year would be to enhance our accredited offerings as well as expanding our reach further to provide opportunities to communities where we are able to make an impactful contribution.

## FUTURE GOALS:



**Secure QCTO accreditation for a variety of qualifications and skills programmes in 2026.**



**Access additional diverse funding streams, through public-private partnerships and sector-specific grants.**



**Increase our capacity to accommodate concurrent training outside of the Western Cape.**



**Build out a platform for online access of our courses in 2027.**



*José Ganess  
Acting Manager, Green Skills*



## From Graduate to Steward of Nature

Safiyyah began her conservation career as a Groen Sebenza intern, placed at Muizenberg East.

During her internship, she stood out for her leadership, fieldwork contributions, and ability to engage stakeholders meaningfully.

Her passion for biodiversity and community upliftment was evident in her work and interactions.

**In early 2025, Safiyyah was appointed Site Manager for the Muizenberg East Biodiversity Cluster.**

**Her responsibilities include coordinating conservation activities, managing field teams, and liaising with the City of Cape Town.**

**She leads ecological restoration efforts and supports community engagement initiatives.**



*Safiyyah Hattas, Site Manager Muizenberg East Biodiversity Cluster.*

Safiyyah's journey reflects the power of structured mentorship and real-world experience.

Her transition from intern to site manager showcases the success of programmes such as Groen Sebenza, a SANBI-coordinated graduate programme.

“Starting as an intern, I never imagined I'd be leading a site one day. The mentorship I received helped me grow not just professionally, but personally. Now, I get to guide others and create opportunities for the next generation of conservation champions.” — Safiyyah Hattas, Site Manager at Muizenberg East

## This Programme is made possible by:

CATHSSETA, Hans Hoheisen Charitable Trust, Nedbank Private Wealth, City of Cape Town (Environmental Management Department), Quemic Africa. Host site partners: Sharkspotters (Muizenberg), City of Cape Town Biodiversity Management Branch, SANParks, South African Association for Marine Biological Research, Southern African Foundation for the Conservation of Coastal Birds (SANCCOB), Two Oceans Aquarium Foundation, National Zoological Gardens Education Centre (SANBI), Centre for Rehabilitation of Wildlife (CROW), North West Parks and Tourism Board (Molopo Nature Reserve)

## Here are compelling reasons why a potential partner should get involved:



Many young people in the programme come from communities with limited job opportunities and unmet basic needs.



A vision to upskill more people to take action for the protection of nature.



We support equity, access, and long-term employability in the conservation sector.

*Support the Greenskills Programme and give young people the practical training they need to thrive in conservation and environmental careers.*

## Meet our Greenskills Team





***“Skills become powerful when they lead to purpose, and purpose begins with opportunity.”***



# NATURE CARE FUND



## THE PROBLEM OUR PROGRAMME ADDRESSES

***Cape Town, part of the world's smallest floral kingdom, is a global biodiversity hotspot.***

It is also known as the species extinction capital of the world, with at least 306 of its 3,400 indigenous plant species currently threatened.

Ongoing urban growth places enormous pressure on remaining natural habitats, making it increasingly difficult for the City to meet the global 30 by 30 biodiversity targets, which aim to protect 30 percent of the Cape Floristic Region by 2030.

Established in 2007, the Nature Care Fund programme works with public and private partners to channel funding from the private sector into conservation efforts on both public and private land.

The programme plays a vital role in protecting habitats, restoring biodiversity, and connecting communities to nature through inclusive and sustained action.

## HOW DO WE SOLVE THIS?

We have worked across 157 hectares to maintain or restore biodiversity this last year. This includes clearing invasive Rooikrans and Typha at Bokbaai Private Nature Reserve, and removing invasive bulrush in order to prevent flooding in Paarden Eiland in the Zoarvlei Section of Table Bay Nature Reserve. A species conservation highlight was the increased prevalence of the critically endangered *Psoralea glaucina* in the private conservation area in the heart of Muizenberg, and our research and innovation success includes exploring bat species identification across several sites in the city, along with ongoing efforts to secure Western Leopard Toad safety during mating season.

All partnerships remained strong, with the renewal of our partnership with the City of Cape Town Biodiversity Management Branch being a highlight. We also look forward to tracking the impact of a three-way partnership between Nature Connect, the City, and the National Lotteries Commission that resulted in the launch of the River Warden Programme – adding 45 staff to support restoration work across six city reserves.

Our sites continue to serve as outdoor classrooms, whilst our “Spring” and “Night” walks are growing in popularity, often fully booked. Newsletters keep residents informed about urban gems within the Cape Floristic Region, and our site managers also keep spaces safe and beautiful by addressing illegal squatting and litter issues.

***Winning the SANParks Kudu Award highlighted our grassroots impact, which was supported by the Table Mountain Fund's Small Grants Programme.***

Five site managers remain funded through long-term biodiversity compensation agreements, and one through a City Improvement District. This year, ~R1 million was also disbursed through biodiversity offsets to conservation projects in partnership with the City and CapeNature.

To date, the programme has taken the following actions:



**Supported the maintenance and/or rehabilitation of over 157 hectares of degraded land through alien clearing, indigenous planting, and erosion control.**



**Enabled ongoing monitoring of 71 threatened plant and animal species, supporting data-driven conservation action.**



**1054 person days of community outreach achieved as part of the Nature Care Fund programme**



*Help us scale this impact! Support the Nature Care Fund and help protect Cape Town's remaining natural habitats before they disappear.*

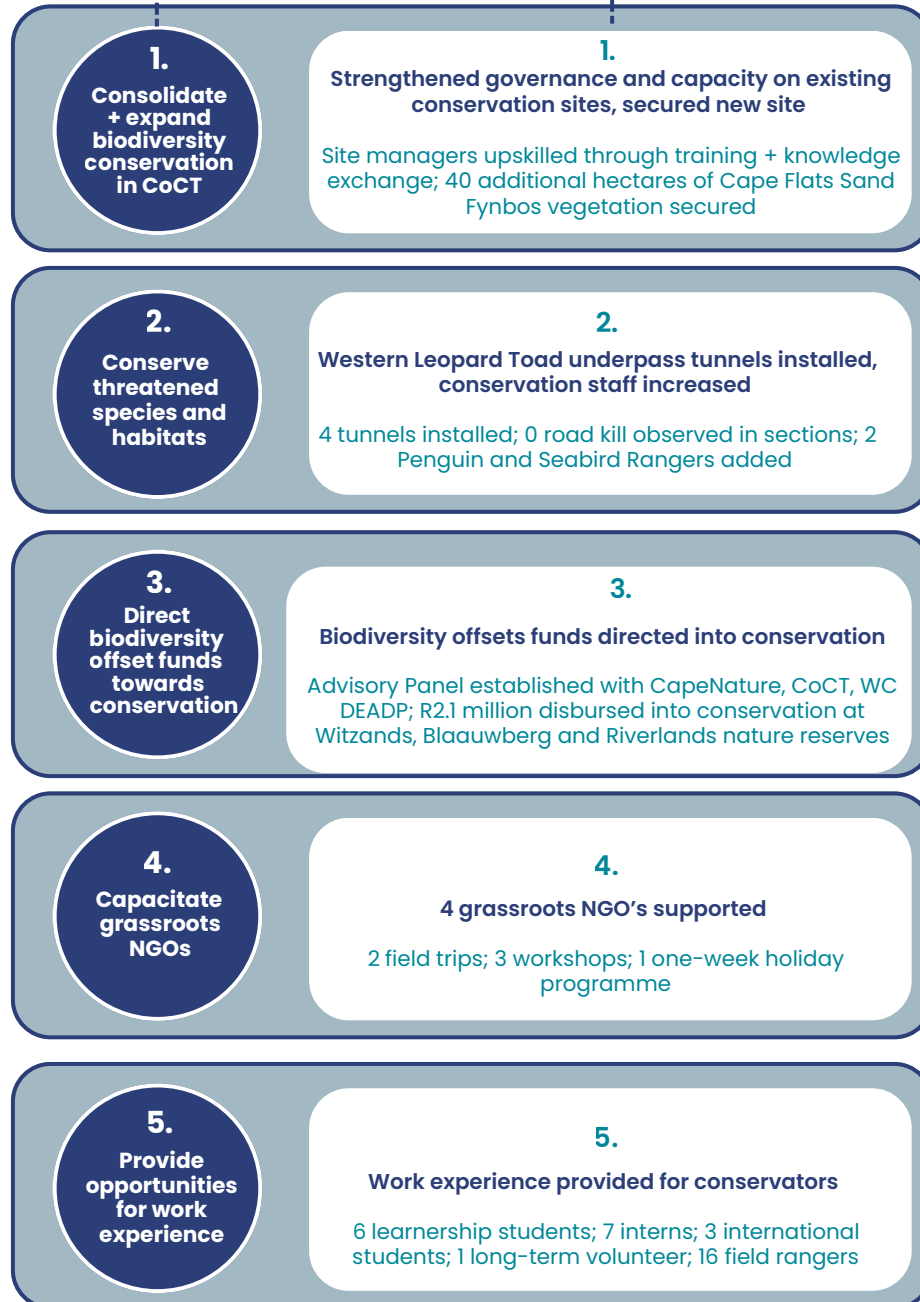
**Western Leopard Toad Underpass Project - Image by Jeremy Shelton**



# STRATEGIC TARGETS AND IMPACTS

## Strategic Targets

## Action and Impact





## Project Lead Testimonial

We have worked hard this year to identify what defines the Nature Care Fund programme, and how it fits into the organisation.

We have concluded that this programme is where the vision “people of Africa love and protect nature” can be realised.

The Nature Care Fund programme is where the value and benefits from nature are tangible:

- People can see nature and enjoy the sounds of nature on their doorstep – literally.
- Individuals, families and children can immerse their senses in nature.
- Everyone can learn about nature and how they depend on nature.

Neighbourhoods can benefit from higher property prices when they have site managers ensuring well-managed and safe open natural areas for recreation.

## FUTURE GOALS:



**Secure** more City Improvement Districts replacing “greening” with genuine ecological restoration of the Cape Floristic Region biodiversity.



**Acquire** more Master Property Owner Associations contributing towards rehabilitation and maintenance of local open space to create corridors for nature to thrive (or at least survive!) throughout the City



**Place** more conservation managers on conservation sites in the urban environment, so as to not only nurture nature, but also reach into the hearts and minds of the residents around the conservation sites.



**Secure** long-term funding for protecting threatened species and habitats.



*Lynette Munro, Manager: Nature Care Fund Programme*



## FOSTERING AWARENESS AND COMMUNITY ENGAGEMENT

### Milnerton Racecourse Conservation Area (MRCA)

The MRCA stands as a model for collaborative urban conservation, where Nature Connect, in partnership with the City of Cape Town, the Milnerton Racecourse Environmental Management Committee, and the Royal Ascot Master Property Owners Association, continues to steward 19 hectares of highly threatened Cape Flats Sand Fynbos habitat.



In 2024, targeted conservation action at MRCA focused on restoring ecological processes and biodiversity by:

***“Habitat restoration is slow, deliberate work. It’s clearing invasive plants so indigenous ones can return. It’s rebuilding wetlands so frogs and birds have a place to breed. It’s planting trees not for today, but for the shade they’ll give in thirty years. Every action is a step toward balance – not dramatic, but deeply necessary. And it’s only possible when people care enough to fund the quiet work of healing.”***

- Creating vegetation plots in a area that burned, in order to monitor the regeneration rates of plants and the effectiveness of different rehabilitation methods.
- Restoring a 200 sqm plot of degraded vegetation in the southern section of the reserve, specifically to encourage growth of the critically endangered *Serruria aemula*.
- Celebrating the observation of a Zitting cisticola (*Cisticola juncidis*) for the first time since 2015 on the site.





## MRCA CONTINUED...

**10 local and international volunteers contributed hands-on support.**



*Wetland view in the northern section of MRCA*



*Eco burn at MRCA southern section on 3 April 2024*

Education and outreach activities remained central to the work at MRCA, over the year:

- Full house (in terms of number of guests) for three frog night survey events. Guests comprised local residents and children from the local Scouts troop;
- Full house for the number of guests undertaking the two Spring walk events;
- Grade 4 learners from St. Theresa Primary visited the site for a guided educational outing with their teachers;
- Four editions of a digital newsletter were circulated to keep local residents informed and engaged.

In line with Nature Connect's commitment to assist conservators entering into the sector, the MRCA served as a vital learning platform last year hosting:

- Two Groen Sebenza interns and two early-career site managers acquiring 12 months practical experience in urban biodiversity management;
- Four Nature Conservation students completed their Work-Integrated Learning activities at the site;
- One NQF Level 4 learner participated in a structured learnership, developing technical skills in the field.



### Urban Waterways Conservation – River Warden Programme

The River Warden Programme, delivered in partnership with the City of Cape Town and funded by the National Lottery Commission and the City's Environmental Management Department, is a flagship example of ecological restoration meeting human capital development.

Designed as a two-year, holistic development pathway for unemployed youth, the programme bridges the urgent need to improve the ecological integrity of Cape Town's urban waterways whilst creating meaningful employment and training opportunities.

Launched in May 2024, the River Wardens began their journey with Nature Connect before transitioning to the City of Cape Town's Biodiversity Management Branch. Nature Connect continues to play a critical role in overseeing the programme's implementation and delivering its training interventions—ensuring that ecological outcomes are matched by real, lasting human development.



**The newly appointed River Wardens at the programme Induction**

### Succulent Karoo Conservaton – Youth in Nature Programme

The Youth in Nature Programme, a partnership between the Karoo Jeug Stigting (Karoo Youth Foundation) and Nature Connect with funding from Nedbank Private Wealth. This is a two-year initiative based in Calvinia, aimed at developing 14 young people under the age of 26 in one of South Africa's most ecologically unique regions—the Succulent Karoo.

The project is in its foundational phase, with the focus on planning and participant interviews with the official programme starting in April 2025.

As the programme gains momentum, we're excited to witness its growth and impact in restoring this fragile ecosystems whilst watching the local youth growing into stewards of their natural heritage.



**Youth in Nature interviewees preparing for the 'pack test' in Calvinia**

## This Programme is made possible by:

Soralia Village, Sunrise Villas, South Break, Muizenberg Master Property Owners Association, Cape Racing, Hollywood Bets, Paarden Eiland City Improvement District, Welgemoed City Improvement District, Royal Ascot Master Property Owners Association, Table Mountain Fund, Leisure Charitable Trust, Mapula Trust, Karoo Youth Foundation, City of Cape Town, Wildlife Acoustics, Lomas Wildlife Protection Trust, Forvia Foundation, Hensoldt, Southern African Foundation for the Conservation of Coastal Birds (SANCCOB), FynbosLIFE, Friends of Rondebosch Common, National Lotteries Commission

Supporting the work of the Nature Care Fund also means we can provide opportunities for more to take action towards loving and protecting nature.



**Increased habitat and species protection**



**Increased community environmental appreciation**



**Increased funding towards conservation through partnerships**



**Increased capacity and collaboration among grass-roots NGOs through a Small Grants Facility**

*Support the Nature Care Fund and help communities protect biodiversity through land stewardship, restoration, and conservation action.*

# Meet our Nature Care Fund Team



**“Conservation thrives when communities lead the way, stewarding land not just for today, but for generations to come.”**





## KEY COLLABORATIONS FOR THE YEAR



The Society for Ecological Restoration: Africa Chapter (SERAF) is the continental arm of the global Society for Ecological Restoration.

It advances the science, practice, and policy of ecological restoration to sustain biodiversity, bolster climate resilience, and re-establish a healthy relationship between nature and culture.

Nature Connect sits on SERAF's founding committee (established 2021) and actively facilitates its administration and communication. Our key contributions include:

- Engaging in the drafting of the five-year SERAF Strategy, focused on creating a certified pan-African network of restoration practitioners, researchers, and advocates
- Hosting webinars that amplify ecological restoration initiatives across the continent, aligned with the UN Decade on Ecosystem Restoration

### ← INTERNATIONAL FORA →



Nature Connect continues to engage actively with the Greening Education Partnership (GEP), an open global platform comprising Member States and a broad spectrum of stakeholders, including intergovernmental organizations, civil society, youth, academia, and the private sector.

The GEP network facilitates collaboration through four thematic working groups: Greening Schools, Greening Curriculum, Greening Teacher Training, and Greening Education Systems' Capacities and Communities.

In 2024/2025, we provided feedback on the Greening Curriculum Guidance documents and helped shape the Policy Discussion Framework for Teacher-Responsive, Climate-Smart Education Systems (working title) within the Greening Curriculum and Greening Teacher Training & Education Systems Capacities groups.



# NATIONAL FORA

## National Skills Development Planning Forum:

The National Skills Development Planning Forum (NSDPF) serves as a multi-stakeholder platform convened to strengthen South Africa's skills ecosystem through coordinated planning, and inclusive dialogue. It brings together representatives from government departments, SETAs, research institutions, civil society, and the private sector to align national skills development strategies and report on sector activities.

Nature Connect has participated in NSDPF engagements relevant to the conservation sector, contributing insights on capacity development and green skills pathways. These engagements complement our broader strategic collaborations in 2024/2025, reinforcing Nature Connect's commitment to sector-wide transformation and inclusion.

## EWT Ethics Committee:

The Endangered Wildlife Trust's Animal Ethics Committee (EWTEC) is a formal, independent body that convenes regularly to review and grant ethics clearance for all EWT projects involving animal and social welfare procedures. The committee ensures each project's design aligns with national legislation and ethical standards before any fieldwork or research commences. Nature Connect's involvement in EWTEC during 2024/2025 is achieved through representation by Louise Matschke, serving as one of the committee's project reviewers. Louise participates in scheduled EWTEC meetings to evaluate project protocols, assessing animal welfare measures and social safeguards to verify compliance with national guidelines and advising on project design adjustments to strengthen ethical rigour and community considerations.

## National Environmental Learning Forum:

The National Environmental Learning Forum (NELF) is dedicated to strengthening environmental learning for school-based learners and supporting educators across South Africa's schooling system to advance Environmental Education and Education for Sustainable Development (ESD) in the sector. Similar to the NSDPF, the NELF convenes various stakeholders from across the sector to align policy, share best practices, and co-create resources that enhance learner engagement, innovation and coherence in the sector.

Nature Connect's involvement in NELF has focused on advancing teacher support and system-level capacity for environmental learning through our Sustainable School Programme. Also contributing to the review of the national curriculum to ensure a stronger inclusion of the environment and sustainability across all school subjects.



## **Marine and Coastal Educators Network:**

The Marine and Coastal Educators Network (MCEN) operates under the South African Network for Coastal and Oceanic Research (SANCOR) as an informal, nationwide community of educators working along South Africa's 3 300 km coastline and teaching marine topics in classrooms across the country. MCEN's purpose is to identify emerging opportunities for marine education, collaboration among educators and support teaching activities, whilst bridging the gap between marine scientists, resource managers, and the public through annual conferences and ongoing dialogue.

Nature Connect's active involvement in MCEN is reflected in Louise Matschke's appointment as the Network's treasurer. Key contributions include:

- Overseeing financial planning and budget management for network activities and annual conferences
- Generating financial reports and ensuring transparent allocation of funds
- Coordinating resource mobilization for workshops and conferences.

## **E-NGO Collaboration:**

The Environmental NGOs Collaboration (E-NGO Collab), convened by Green Trust with the exultant being WildTrust, unites South African environmental NGOs to engage directly with government on policy development, implementation, and sector alignment. Its purpose is to coordinate civil-society advocacy, pool expertise across organisations, and strengthen dialogue channels with relevant government departments.

Nature Connect joined E-NGO Collab in early 2025 and attended our first meeting with the E-NGO Collab before the close of the 2024/2025 financial year. Nature Connect's involvement underscores our strategic intent to expand its advocacy footprint and deepen sector influence.



# REGIONAL FORA



## Conservation Advisory Committees:

Nature Connect holds advisory positions on the Nature Conservation Qualifications committees at the University of South Africa (UNISA) and the Cape Peninsula University of Technology (CPUT). These committees bring together academic leaders, industry practitioners, and sector experts to shape curriculum frameworks, set competency benchmarks, and ensure graduates are well-equipped to enter the sector.

Through these roles, we influence programme design and alignment between academic outcomes and conservation practice.

In addition to our higher-education advisory roles, Nature Connect has contributed to the development of the Environmental Education and Training Development Practitioner (EETDP) qualifications with the Education, Training and Development Practices SETA (ETDP SETA). We also serve on advisory committee for three nature conservation qualifications under the Culture, Arts, Tourism, Hospitality and Sport SETA (CATHSSETA). These engagements enable us to shape the occupational training standards across both education and conservation sectors, ensuring a cohesive pipeline of skilled practitioners. These engagements advance Nature Connect's 2024/2025 strategic priorities by strengthening sector capacity, extending our influence into higher-education and occupational training pathways.



## Western Cape Environmental Education Forum:

The Western Cape Environmental Education Friends/Forum (WCEEF) is a regional network of educators, NGOs, government and community partners dedicated to advancing and creating collaborations for environmental learning across the Western Cape. Over the past two years, Nature Connect has progressed from meeting attendance to a seat on the WCEEF Strategic Committee, contributing to the Forum's direction and governance. Furthermore, Nature Connect was involved in various WCEEF clusters (i.e. working groups), that co-developed several environmental learning initiatives, the flagship being the Big Biodiversity Challenge.



# LOCAL FORA

In mid-2024, EEASA Council - through Nature Connect - invited WCEEf to host the 2025 EEASA conference. Upon acceptance, Nature Connect joined the WCEEf-EEASA Local Organising Committee. The WCEEf EEASA LoC is responsible for overseeing the on-the-ground planning, coordination and delivery of a successful conference to be held in September 2025.

## Cape Floristic Region Partnership (CFRP):

The Cape Floristic Region Partnership (CFRP) extends across parts of the Northern, Western and Eastern Cape provinces, geographically defined by the globally unique "Cape Floristic Region" vegetation type. Building on the legacy of CAPE (Cape Action for People and the Environment), the CFRP convenes government, NGOs, landowners and research institutions in a multi-stakeholder platform dedicated to collaboration, advocacy, learning and communication for biodiversity conservation.

Nature Connect signed the CFRP Memorandum of Understanding on 31 May 2024 and serves on the 2024–2026 CFRP Committee. We contribute towards planning, knowledge exchange, and governance.



## The Western Cape Stewardship Reference Group:

The Western Cape Stewardship Reference Group, aligned to the UN Decade on Ecosystem Restoration and South Africa's national biodiversity goals, guides the implementation of the Western Cape Protected Areas Expansion Strategy and promotes stewardship as a cost-effective conservation tool where land acquisition is not feasible.

Although stewardship traditionally focuses on rural landscapes, the Reference Group integrates conservation into urban planning by identifying ecologically valuable areas within urban and peri-urban zones and ensuring these are considered in development decisions.

Nature Connect engages in the Reference Group to support landowners and municipalities, encouraging their commitment to biodiversity stewardship agreements or equivalent arrangements that protect green spaces and ecological corridors.

## The Western Leopard Toad Conservation Committee (WLTC):

The Western Leopard Toad Conservation Committee (WLTC), launched in 2008 under SANBI's leadership, is a multi-stakeholder alliance of conservation NGOs, municipal authorities, research institutions and local volunteers focused on safeguarding the endangered Western Leopard Toad in Cape Town and surrounds.

**Nature Connect represents on the WLTC, driving research and practical solutions to reduce road mortality through underpass tunnel installations.**

## CATCHMENT FORA:

Nature Connect is represented in the Zeekoe Catchment Management Forum (ZK-CMF) and the Sand River Catchment Forum, as well as the Diep River Estuary Management Forum. These were all launched by the City of Cape Town's Catchment, Stormwater and River Management branch. The Catchment Forum unites government, CSOs, businesses and communities to safeguard water quality, manage flooding, increase community engagement and bolster resilience across the two catchments. Nature Connect's involvement spans from catchment users to on-the-ground implementers, through our joint City of Cape Town River Warden programme and a number of other Nature Care Fund and Green Skills initiatives.

**Protected Area Advisory Committees (PAACs):** Nature Connect is represented on the Protected Area Advisory Committees (PAACs) for Table Bay Nature Reserve, Blaauwberg Nature Reserve, False Bay Nature Reserve and Zandvlei Nature Reserve. The PAACs are statutory bodies under the National Environmental Management: Protected Areas Act, linking reserve management with local communities, NGOs, user groups and other stakeholders. Since 2020, Nature Connect has been a formally constituted PAAC member, contributing to the strategic direction and community relevance of reserve management. The organisation seeks to enhance ecological connectivity by stewarding urban conservation sites that link fragmented habitats to support species movement and ecosystem function. It also promotes climate resilience by conserving urban wetlands, rivers and green belts to mitigate floods, fires and droughts.

**“Collaboration is where our impact begins—the forum is where ideas become action.”**

## PARTNERS

South African Education and Environment Project (SAEP),  
South African Environmental Observation Network (SAEON),  
Project 90 by 2030,  
Darling Outreach Foundation,  
Imbovane Outreach,  
SHAWCO,  
Periods for Hope,  
Natures Valley Trust,  
SANParks,  
CapeNature,  
Discover Eden,  
Fundisa for Change,  
SANBI,  
Working on Fire,  
Cape Town Science Centre,  
Green Matter,  
SOS Shark Educational Centre,  
Shark Spotters,  
Chadwick School,  
Sustainability Matters,  
Chrysalis Academy,  
Quemic,  
SANCCOB,  
SAAMBR,  
Friends of Zeekoevlei and Rondevlei,  
Cape Leopard Trust,  
Two Oceans Aquarium Foundation,  
ETDP SETA,  
CATHSSETA,  
WWF-SA,  
City of Cape Town,  
Cape Town Tourism,  
Code4Kids,  
Enviro Vito NPO,  
Groundwater Kids,  
Guardians of the Deep,  
I AM WATER,  
Lapalala Wilderness School,  
One Planet South Africa,  
Perridon Conservation College,  
Rand Water: Water Wise Education,  
Ingcungc,  
The Beach Co-op,  
Greenpop,  
Two Oceans Aquarium,  
Captain Fanplastic,  
Environmental Monitoring Group,  
Grootvaly Blesbokspruit Conservation Trust,  
Breteau Foundation,  
Society for Ecological Restoration,  
Wildlife Forensic Academy,  
Iridium Business Solutions



## DONORS



**Dower DCAP Advisory Fund**

**476 Charitable Trust**





**Join us. Act now. Let's  
change lives through nature.**



## Together, We Can Drive Lasting Change

The challenges we face, from biodiversity loss to environmental disconnection, require bold, collaborative action. Through programmes like Sustainable Schools, Greenskills Connect to Nature, and the Nature Care Fund, we are building a movement that empowers youth, supports educators, restores ecosystems, and strengthens community resilience.

### Help us scale this impact.



Partner with us to protect nature, invest in people, and shape a future where environmental responsibility is part of everyday life. Whether you're a donor, policymaker, educator, or advocate—your support fuels the transformation we need.





# NATURE CONNECT

---

---

## HEAD OFFICE



Unit 3B  
Tokai on Main Office park  
2 Burchell Street  
7966



021 100 5613 | 021 7068523



media@natureconnect.earth



<https://natureconnect.earth/>

**Sustainable Schools Programme:** [sustainableschools@natureconnect.earth](mailto:sustainableschools@natureconnect.earth)  
**Green Skills Development:** [greenskills@natureconnect.earth](mailto:greenskills@natureconnect.earth)  
**Nature Care Fund:** [naturecarefund@natureconnect.earth](mailto:naturecarefund@natureconnect.earth)

