



# RESTORATION ELEMENTS™

MDC YORK  
CONTRACT



RESTORATION  
ELEMENTS™

## ABOUT THE COLLECTION

The streamlined practicality of industrial design has created a new genre, renewed and restored with raw goods and minimalist décor. Committed to the preservation and appreciation of the work worn finishes and utilitarian goods of the industrial workspace.

## KEYWORDS

woodgrain, natural, weave, rustic,  
planks, parquet, sawmill, lodge,  
forestry, lumber





RESTORATION  
ELEMENTS™

## MILLWORK

### SPECIFICATIONS

Width: 54"  
Weight: 20 oz. TYPE II Vinyl  
Backing: Osnaburg  
Installation: Non-Reversible / Random Match

Class A Fire Rated / ASTM E84

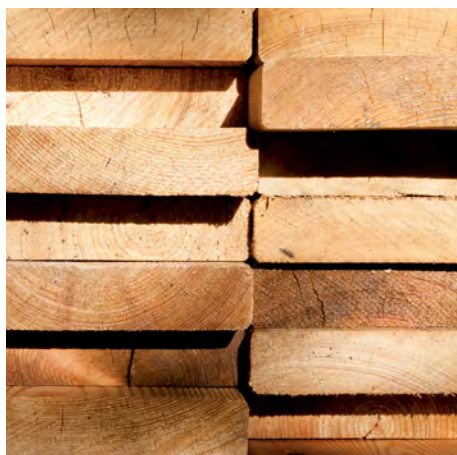
Additional information on:

- Product Specifications
- Environmental Attributes
- Moisture, Mold & Permeability
- Warranty

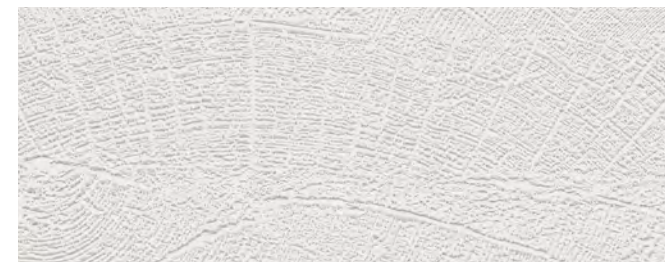


Visit: [mdcwall.com/RestorationElements](http://mdcwall.com/RestorationElements)

Manufactured & Designed in America



MRE1565 Timber



MRE1568 Optic White



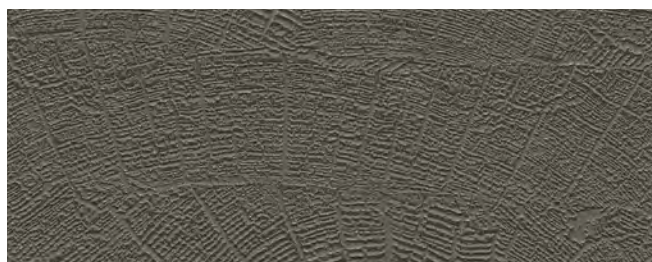
MRE1569 White Wash



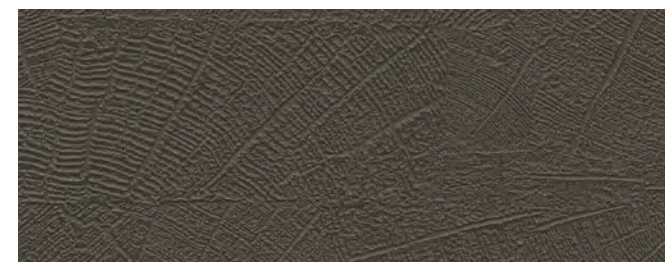
MRE1566 Haze



MRE1570 Sun Deck



MRE1567 Shadow



MRE1571 The Pier



## CARPENTRY

### SPECIFICATIONS

Width: 54"  
Weight: 20 oz. TYPE II Vinyl  
Backing: Non-Woven  
Installation: Non-Reversible / Straight Match  
Repeat: 25.25"

Class A Fire Rated / ASTM E84

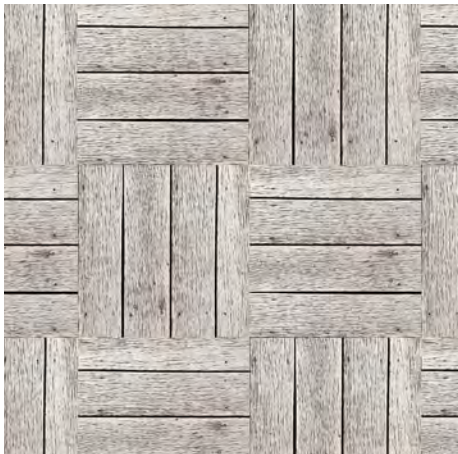
Additional information on:

- Product Specifications
- Environmental Attributes
- Moisture, Mold & Permeability
- Warranty



Visit: [mdcwall.com/RestorationElements](http://mdcwall.com/RestorationElements)

Manufactured & Designed in America



MRE1558 White Wash



MRE1560 Plank Slate



MRE1562 Driftwood



MRE1559 Timber



MRE1561 Sun Deck



MRE1563 The Pier



## PLANKS

### SPECIFICATIONS

Width: 54"  
Weight: 20 oz. TYPE II Vinyl  
Backing: Non-Woven  
Installation: Non-Reversible / Straight Match  
Repeat: 25.25"

Class A Fire Rated / ASTM E84

Additional information on:

- Product Specifications
- Environmental Attributes
- Moisture, Mold & Permeability
- Warranty



Visit: [mdcwall.com/RestorationElements](http://mdcwall.com/RestorationElements)

Manufactured & Designed in America



MRE1550 White Wash



MRE1552 Plank Slate



MRE1554 Haze



MRE1551 Timber



MRE1553 Sun Deck



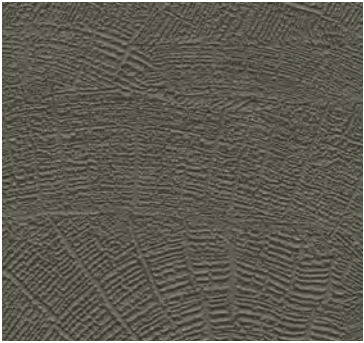
MRE1555 The Pier



# PRODUCTS

MDC YORK  
CONTRACT

RESTORATION  
ELEMENTS™



DOWNLOAD  
PRODUCT IMAGES



DOWNLOAD ROTATION  
AND SPEC SHEETS



DOWNLOAD  
ROOM SET IMAGES





Click to watch video. To download video, access file via link below.

DOWNLOAD VIDEO 



# MicroVent<sup>™</sup> YORK

York Contract is pleased to announce we can provide **perforation services for your commercial wallcovering.**

**MicroVent<sup>™</sup>  
YORK** offers the following benefits:

- Mitigates mold and mildew in humid conditions, while invisible to the eye
- Improves air flow allowing moisture to pass through tiny pinholes in the material
- Transforms wallcovering into a breathable material

Please submit all orders and inquiries to [contract@yorkwall.com](mailto:contract@yorkwall.com) or call (800) 455.9913

**YORK**  
C O N T R A C T