



PESONA PELUANG INVESTASI DI KABUPATEN MUNA BARAT

CHARMING INVESTMENT OPPORTUNITIES IN WEST MUNA REGENCY



#idaiaksultra



Pesona Peluang Investasi di Kabupaten Muna Barat



Profil Kepala Daerah *Profile of Regional Head*

Drs. LA ODE M RAJIUN TUMADA, M.Si.
Bupati Muna Barat
The Regent of West Muna

Beliau dilahirkan di Labongkuru pada tanggal 09 Maret 1970, memiliki hobi Olah Raga dan Motto: "Berangkat dengan keyakinan, berjalan penuh keikhlasan". Beliau menikahi Ibu Hj. Herlina Jie Zusilawati Madek dan telah memiliki seorang putri (Rachel Putri Shasabilla Tumada Wa Ode) dan sepasang kembar emas (La Ode Muhammad Rahmat Raihan Jie Rajiun Tumada dan Wa Ode Rahma Raiza Jie Rajiun Tumada).

Pendidikan dasar diikutinya di SD Negeri 3 Raha (1979-1984) dan dilanjutkan ke SMP Negeri 1 di Raha (1984 - 1987) dan terakhir di SGO Kendari (1987-1990). Sedangkan Pendidikan tingginya ditempuhnya di IKIP Manado (1990-1995) dan Pasca Sarjana Universitas Sam Ratulangi di Manado (2000-2002).

Kariernya diawali sebagai Kepala Seksi Ketentraman dan Ketertiban, Pemerintah Manado, Sulawesi Utara (2001-2005); Kepala Seksi Pent. Program Pengembangan Subdik, Ops Perindag, Pemerintah Kota Manado, Sulawesi Utara (2005-2006); Kepala Bidang Pembangunan Disiplin dan Pengembangan Kota Manado, Sulawesi Tenggara (2006-2008); Kepala Bidang Pemeriksaan dan Penyelidikan Satpol PP Provinsi Sulawesi Tenggara (2009-2011); Kepala Satuan Polisi Pamong Praja Sulawesi Tenggara (2011-2014); Pj. Bupati Muna Barat (2014-2016) dan terakhir terpilih sebagai Bupati Muna Barat periode 2017-2022.

Pengalaman Organisasinya adalah sebagai Wakil Ketua GP Ansor Sulawesi Tenggara (2011-2013); Wakil Ketua KNPI Sulawesi Tenggara (2009-2014); dan Wakil Ketua HMI Manado (1993-1994).

Baru-baru ini, 28 November 2019, Kabupaten Muna Barat melalui tangan dingin beliau, mendapatkan penghargaan Index Kelola 2019, dari Kementerian Keuangan melalui Katadata Insight Center (KIC) terkait dengan Kinerja dan Efektivitas Pengelolaan APBD pada Kategori Pencapaian Outcome Kesejahteraan. Kemudian pada tanggal 30 November 2019, Kabupaten Muna Barat kembali mendapatkan penghargaan yaitu Anugerah Dwija Praja Nugraha dari PB-PGRI, sebagai penghargaan atas perhatian dan komitmen tinggi yang dimiliki Bupati Muna Barat dalam pembangunan Pendidikan, Profesionalitas dan Kesejahteraan Guru serta PGRI.

He was born in Labongkuru on 9 March 1970, has a hobby of Sports and Motto: "Depart with Confidence, Walk full of Sincerity". He married Mrs. Hj. Herlina Jie Zusilawati Madek and has a daughter (Rachel Putri Shasabilla Tumada Wa Ode) and a pair of Golden Twins (La Ode Muhammad Rahmat Raihan Jie Rajiun Tumada and Wa Ode Rahma Raiza Jie Rajiun Tumada).

He attended basic education at State Elementary School 3 of Raha (1979-1984) and continued at State Junior High School 1 of Raha (1984-1987) and finally at SGO Kendari (1987-1990). While he attained his higher education at IKIP Manado (1990-1995) and Post-Graduate in Sam Ratulangi University of Manado (2000-2002).

His career began as Head of the Peace and Order Section, Government of Manado, North Sulawesi (2001-2005); Head of Pent. Subdik Development Program Section, Ops. Perindag, Manado Municipality Government, North Sulawesi (2005-2006); Head of Discipline and Development of Manado City Division, Southeast Sulawesi (2006-2008); Head of Inspection and Investigation Division of Satpol PP of Southeast Sulawesi Province (2009-2011); Head of the Southeast Sulawesi Civil Service Police Unit (2011-2014); Acting Regent of West Muna (2014-2016) and most recently elected as the Regent of West Muna period 2017-2022.

His organizational experiences were as Deputy Chairperson of the GP ANSOR of Southeast Sulawesi (2011-2013); Deputy Chairman of KNPI of Southeast Sulawesi (2009-2014); and Deputy Chairman of HMI of Manado (1993-1994).

Recently on 28 November 2019, West Muna Regency through his cold hand, was awarded the 2019 Manage Index, from the Ministry of Finance through the Katadata Insight Centre (KIC) related to the Performance and Effectiveness of Regional Budget Management in the Welfare Outcome Achievement Category. Then on 30 November 2019, West Muna Regency was again awarded the award Anugerah Dwija Praja Nugraha from PB-PGRI, as an award for the attention and high commitment of the Regent of West Muna in the development of Education, Professionalism and Teacher Welfare as well as PGRI.





Sambutan Kepala Dinas Penanaman Modal dan Pelayanan Terpadu Satu Pintu (DPMPTSP) Kabupaten Muna Barat

Foreword The Head of The Ones-Stop Office of Investment and Integrated Services of West Muna Regency

LIBER, S.Pt., M.Si.

Merupakan suatu anugerah Tuhan Yang Maha Esa, Kabupaten Muna Barat memiliki wilayah yang cukup luas dengan kekayaan alam yang cukup menjanjikan.

Pemerintah Kabupaten Muna Barat melalui DPMPTSP terus berusaha memberikan kemudahan pelayanan dan informasi bagi masyarakat yang ingin mengurus izin dalam kegiatan usahanya. Hal ini dilakukan agar minat para Investor untuk berpartisipasi membangun wilayah Kabupaten Muna Barat menjadi meningkat yang tujuannya adalah untuk memajukan wilayah ini sejajar dengan wilayah-wilayah lain di Nusantara. Mengingat pertimbangan bahwa Kabupaten Muna Barat memiliki pertumbuhan ekonomi yang terus meningkat dari tahun-ke-tahun.

Terima kasih kepada Bapak Bupati Muna Barat yang telah memberikan kepercayaan kepada kami untuk menyusun buku dengan judul "**Profile of The 10 Potential Regions for Investment in Indonesia**" ini. Buku ini berisikan informasi tentang potensi daerah dan peluang investasi di sektor-sektor unggulan Kabupaten Muna Barat. Juga terima kasih kepada semua pihak yang telah membantu penyusunan, penerbitan dan pendistribusian buku ini.

Semoga bermanfaat !!

It is a gift from GOD the Almighty that West Muna Regency has a wide area with quite promising natural resources.

The Government of West Muna Regency through DPMPTSP continues to strive to provide convenience services and information for people who want to take care of licenses in their business activities. This is done so that the interest of investors to participate in developing the area of West Muna Regency increases, the aim of which is to advance this region in line with other regions in the archipelago. Bearing in mind the consideration that West Muna Regency has economic growth that continues to increase year-on-year.

*Thank you to the Regent of West Muna for giving us the confidence to compile the book with the title "**Profile of The 10 Potential Regions for Investment in Indonesia**". The book contains information about regional potentials and investment opportunities in the leading sectors of West Muna Regency. Also, thanks to all those who have helped with the preparation, publishing and distribution of the book.*

May be useful !!





Pesona Peluang Investasi di Kabupaten Muna Barat

PESONA PELUANG INVESTASI DI KABUPATEN MUNA BARAT CHARMING INVESTMENT OPPORTUNITIES IN WEST MUNA REGENCY



VISI DAN MISI KABUPATEN MUNA BARAT (VISION AND MISSION OF WEST MUNA REGENCY)

VISI / VISION :

"Terwujudnya Masyarakat Muna Barat yang Sejahtera, Demokratis, Produktif, dan Berdaya Saing dengan Dilandasi oleh Nilai-Nilai Religius".

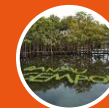
"The Reality of Prosperous, Democratic, Productive, and Competitive West Muna People based on Religious Values".

MISI :

1. Meningkatkan Kualitas Sumber Daya Manusia yang Kreatif, Sehat, Produktif, Inovatif, Berkarakter dan Berbudi Pekerti Luhur;
2. Meningkatkan Ketersediaan Infrastruktur Dasar Wilayah yang memadai dan berkualitas;
3. Mengembangkan Ekonomi Kerakyatan yang berbasis Agropolitan dan Minapolitan;
4. Mengembangkan Potensi Wisata, Lingkungan Hidup yang Lestari, dan Keragaman Budaya Daerah sesuai dengan Kearifan Lokal
5. Mewujudkan Tata Kelola Pemerintahan yang baik dan bersih melalui Penyelenggaraan Pemerintahan yang Aspiratif, Efektif, Partisipatif, Transparan dan Bermartabat.

MISSION :

1. *Increasing of Creative, Healthy, Productive, Innovative, Character and Noble Quality of Human Resources;*
2. *Increasing the Availability of Adequate and Quality Basic Regional Infrastructure;*
3. *Developing Populist Economy based on Agropolitan and Minapolitan;*
4. *Developing Tourism Potential, Sustainable Environment, and Diversity of Regional Cultural in accordance with Local Wisdom*
5. *Realizing Clean Government and Good Governance through the Aspirational, Effective, Participatory, Transparent and Dignified Governance.*



Charming Investment Opportunities in West Muna Regency



GAMBARAN UMUM DAERAH GENERAL DESCRIPTION OF THE REGION

Letak, Luas dan Batas Wilayah

Kabupaten Muna Barat terletak di Tenggara Pulau Sulawesi. Secara astronomis, Muna Barat terletak di bagian Selatan Garis Khatulistiwa memanjang dari Utara ke Selatan. Kabupaten Muna Barat merupakan pemekaran dari Kabupaten Muna, memiliki luas keseluruhan 1.022,89 km² atau 102.289 ha, dengan luas daratan ± 906,28 km² atau ± 90.628 ha. Berdasarkan posisi geografisnya, Kabupaten Muna Barat berbatasan dengan Selat Tiworo dan Kabupaten Konawe Selatan di sebelah Utara; berbatasan dengan Kabupaten Muna di sebelah Selatan dan Timur; dan berbatasan dengan Selat Muna dan Kabupaten Bombana di sebelah Barat. Kabupaten Muna Barat terdiri dari 11 Kecamatan yaitu Tiworo Kepulauan, Maginti, Tiworo Tengah, Tiworo Selatan, Tiworo Utara, Lawa, Sawerigadi, Barangka, Wadaga, Kusambi, dan Napano Kusambi; 81 desa dan 5 kelurahan.

Topografi

Secara garis besar, ketinggian daratan di Muna Barat bervariasi antara nol sampai lebih dari 1.000 m dpl (meter di atas permukaan laut). Namun sebagian besar dari luas daratan Kabupaten Muna Barat berada pada ketinggian 25 – 100 m dpl. Sedangkan luas daratan yang memiliki ketinggian > 1.000 m dpl hanya sekitar 0,02% dari seluruh daratan Muna Barat.

Iklim dan Kesesuaian Lahan

Kabupaten Muna Barat mempunyai iklim tropis seperti sebagian besar daerah di Indonesia, dengan suhu rata-rata sekitar 25,8°C–28,3°C. Demikian juga dengan musim, Kabupaten Muna Barat mengalami dua musim, yaitu Musim Hujan dan Musim Kemarau. Pada umumnya

Location, Area and Boundary

West Muna Regency is in the Southeast of Sulawesi Island. By astronomical, West Muna Regency is on the Southern Line of Equator extends from the North to the South. West Muna, as a division of Muna Regency, has an area of total 1,022.89 km² or 102,289 ha, with a land area of about 906.28 km² or about 90,628 ha. Based on its geographical position, West Muna Regency is bordered by the Tiworo Strait and South Konawe Regency in the North; Muna Regency in the South and the East; and bordered by the Muna Straits and Bombana Regency in the West. West Muna Regency consists of 11 Districts namely the Districts of Tiworo Islands, Maginti, Central Tiworo, South Tiworo, North Tiworo, Lawa, Sawerigadi, Barangka, Wadaga, Kusambi, and Napano Kusambi; 81 Villages and 5 Sub-Districts.

Topography

In the outline, the altitude of land in West Muna Regency varies from zero to more than 1,000 m above sea level (m asl). But most of the land area of Muna West is located at an altitude of 25-100 m asl. While the mainland area which has an altitude of > 1000 m asl is only about 0.02% of the entire land of West Muna.

Climate and Land Suitability

West Muna has a tropical climate like most of Indonesia Territory, with an average temperature of about 25.8°C - 28.3°C. Likewise, with the seasons, West Muna Regency has two seasons, the Rainy and the Dry Seasons. In general, the Rainy Season occurs in December to June





Pesona Peluang Investasi di Kabupaten Muna Barat

Musim Hujan terjadi pada bulan Desember sampai dengan Juni ketika angin yang mengandung banyak uap air bertiup dari Benua Asia dan Samudra Pasifik sehingga menyebabkan hujan. Sedangkan Musim Kemarau terjadi antara Juli sampai November, pada bulan ini angin bertiup dari Benua Australia yang sifatnya kering dan sedikit mengandung uap air. Banyaknya hari hujan pada tahun 2018 rata-rata mencapai 13,6 hari setiap bulannya dengan rata-rata curah hujan 214,8 mm³. Curah hujan tertinggi terjadi pada bulan Juni sebesar 477,0 mm³ dengan jumlah hari hujan sebesar 16 hari hujan. Kelembaban udara antara 76,0% dan 87,0%, tekanan udara antara 1011,2 mb dan 1015,0 mb, kecepatan angin berkisar 1,8 dan 3,5 knot, penyinaran matahari antara 40,7% dan 78,8%.

while wind contains a lot of moisture blowing from the continent of Asia and Pacific Ocean, causing rain. While the Dry Season occurs between July and November. In the months the wind blows from the Australian Continent which is dry and contains little moisture. The number of rainy days in the year 2018 was in average of 13.6 days/month with an average rainfall of 214.8 mm³. The highest rainfall occurred in June at 477.0 mm³ with 16 rainy days. Air humidity between 76.0% and 87.0%, air pressure was between 1,011.2 mb and 1,015.0 mb, wind speeds ranged from 1.8 and 3.5 knots, solar radiation was between 40.7% and 78.8%.



Demografi

Penduduk Kabupaten Muna Barat berdasarkan proyeksi penduduk tahun 2018 sebanyak 80.619 jiwa pada 17.743 rumah-tangga yang terdiri dari 39.258 laki-laki dan 41.361 perempuan (rasio: 94,90). Laju pertumbuhan sebesar 1,02%, Kepadatan Penduduk di Kabupaten Muna Barat tahun 2016 mencapai 89,00 jiwa/km².

Data Ketenagakerjaan Kabupaten Muna Barat Tahun 2018 diperoleh dari Survei Angkatan Kerja Nasional (SAKERNAS). Jumlah angkatan kerja di Muna Barat tahun 2018 mencapai 40.598 jiwa dalam rincian: 39.535 orang yang bekerja dan 1.063 orang pengangguran. Sedangkan non-Angkatan Kerja tercatat 11.344 orang dengan rincian: 3.163 orang bersekolah, 6.290 orang mengurus rumah-tangga dan 1.891 orang melakukan kegiatan lainnya. Tingkat Partisipasi Angkatan Kerja mencapai 78,16% dan Tingkat Pengangguran Terbuka (TPT) adalah: 2,62%.

Perekonomian

Pertumbuhan ekonomi Kabupaten Muna Barat tahun 2018 sebesar 6,63%. Pertumbuhan ekonomi tahun 2018 ditunjang oleh pertumbuhan semua Sektor Ekonomi. Sektor yang mengalami pertumbuhan paling besar adalah Sektor Konstruksi yang mengalami pertumbuhan sebesar 9,79% diikuti oleh Sektor Penyediaan

Demographics

West Muna resident based on the population projection of 2018 was 80,619 inhabitants in 17,743 households consisting of 39,258 men and 41,361 women (sex-ratio: 94.90). The growth rate was 1.0 to 2%; population density of West Muna Regency reached 78.8 inhabitants/km².

The Workforce Data of West Muna Regency in 2018 obtained from the National Labour Force Survey (SAKERNAS), the number of labour force in West Muna (2018) reached 40,598 people in the details: 39,535 people worked, and 1,063 people were unemployed. While non-Workforce with details recorded 11,344 people: 3,163 people attended schools, 6,290 people took care of households and 1,891 people did other activities. The Workforce Participation Rate reached 78.16% and the Open Unemployment Rate (TPT) was 2.62%.

Economy

The economic growth of West Muna Regency (2018) was 6.63%. Economic growth in 2018 was supported by the growth of all Economic Sectors. The greatest economic growth was the Construction Sector by 9.79% followed by the Provision of Accommodation and Food & Beverage Sector was of about 8.60%; the Wholesaler and Retail;



**Charming Investment Opportunities
in West Muna Regency**



Akomodasi dan Makan Minum sebesar 8,60%, Sektor Perdagangan Besar dan Eceran; Reparasi Mobil dan Sepeda Motor sebesar 6,98%, dan Sektor Informasi dan Komunikasi sebesar 6,92%. Sektor Pengadaan Air, Pengelolaan Sampah, Limbah dan Daur Ulang dan Sektor Industri Pengolahan merupakan 2 sektor dengan pertumbuhan ekonomi kecil yaitu di bawah 3%. Struktur PDRB Kabupaten Muna Barat tahun 2018 berdasarkan Harga Berlaku menunjukkan bahwa Sektor Pertanian masih mempunyai peranan tertinggi terhadap total PDRB Kabupaten Muna Barat, yaitu sebesar 38,30%, diikuti oleh Sektor Konstruksi sebesar 20,49% dan Sektor Pertambangan dan Penggalian sebesar 10,28%.

Car and Motorbike Repair Sector by 6.98%, and the Information and Communication Sector amounted to 6.92%. the Water Supply, Garbage, Waste and Recycling Management Sector and the Processing the Industry Sector were 2 Sectors with small economic growth (below 3%). The Gross Regional Domestic Product (GRDP) structure of West Muna Regency in 2018 by Current Price showed that the Agricultural Sector still had a high role against the total of GRDP of West Muna Regency by 38.30%, followed by the Construction Sector amounted to 20.49%; and the Mining and Quarrying Sector at 10.28%.

**SARANA DAN PRASARANA
FACILITIES AND INFRASTRUCTURE**

FACILITIES AND INFRASTRUCTURE	
AIRPORT	Sugimanuru Airport is an airport located on Muna Island, precisely in Kusambi District West Muna. The airport runway has a size of 1600×23 m. The distance from Raha City is about 26 km. IATA Code is RAQ and ICAO Code is WAWR . There were (2017) 254 aircraft departed (13,654 passengers) and 254 aircraft arrived (13,090 passengers).
PORT	Tondasi Seaport is a sea crossing port connecting West Muna Regency and Bombana Regency in Southeast Sulawesi Province and Bira Port in South Sulawesi Province., and the surrounding areas such as Dongkaka, Mawasangka and Kasipute; Pajala Seaport connects with cruise ship owned by PELNI, either to the eastern or to the western parts of Indonesia and would therefore be pursued in order to ships passing to stop by in Pajala Seaport. The Government of West Muna Regency through the Transportation Service will build three crossing ports, such as Tondasi Ferry Port in Central Tiworo District (the Port is the first ferry port which will be improved to Container Port as having a strategic location that connects Makassar with West Muna); Mamuntu Port in Maginti District and Kombikuno Port in Napano Kusambi District.
HIGHWAY	Transportation and communication Facilities are important factors in people's lives that can support the creation of a better life for the community. The road is a means of land transportation which is very important in economic acceleration activities among regions. Good road conditions will facilitate mobility of the population in carrying out economic activities and other social ones. The length of roads in West Muna in 2018 was 562.58 km consisting of 37.00 km of the State Roads; 8.00 km of the Provincial Roads; and 517.58 km of the Regency Roads. Road condition (2018) was 196.12 km in good condition; 38.08 km of medium condition; 328.38 km were damaged roads. While the road surface was recorded: 197.44 km was paved roads; 233.69 km of gravel; and 131.45 km of soil surface.
TRANSPORTATION	West Muna Regency is located on the mainland of the northern and western parts of Muna Island, as well as other nearby islands. The number of ship visits, the flow of goods and passengers recorded in Tondasi Seaport are as follows: ship visits anchored at Tondasi Seaport (2016) was 12 units with unloaded goods reaching 355 tons, while the loaded goods only reached 284 tons.
TELECOMMUNICATION	Post Office in West Muna District centralized at the Sub-Post Office found in Kambara Village of Tiworo Islands District; there was also a one Rural Mobile Post, 2 Rural Post Offices. In 2018 the Post Office & Giro of Kambara contained 2,877 kg Express/Overnight Delivery letters, were sent domestically and as many as 10,746 kg packages were received domestically.
BANKING	Bank Rakyat Indonesia (BRI) and Bank Regional Development (BPD) are the banks that serve the various financial activities of society of West Muna started from savings, deposits, loans, and business credit.
HEALTH FACILITY	Health facilities in West Muna Regency are as follow: one Hospital, 5 Maternity Hospital, 15 Public Health Centres (PHC/Puskesmas), 34 Sub-PHC (Pustu), 52 Clinics/Health Centres, 126 Integrated Service Posts (Posyandu); 9 Rural Maternity Posts (Polindes), 26 Family Planning Clinics (KKB), 86 Rural Family Planning Services (PPKBD) and 4 Pharmacies. While the medical personnel in West Muna Regency, namely: 11 Specialist Doctors (in the hospital), 24 General Practitioners (in hospitals and PHC), 11 Dentists (in hospitals and PHC), 72 Midwives, 40 Nurses, 4 Pharmacists and 26 Nutritionists.
EDUCATION	Education in West Muna Regency (2018) there were 84 Private Kindergartens (TK) and 1 Public TK; 5 Raudhatul RA (there in including the Early Childhood Education Program or PAUD); 95 State Elementary Schools (SD-N) and a Private SD; one Private Madrasah Ibtidaiyah (MI); 37 State Junior High School (SMP-N) and one Private SMP; 7 Private Madrasah Tsanawiyah (MTs); 11 State Senior High Schools (SMA-N); 4 State Vocational High Schools (SMK-N) and 3 Private SMK; and 4 Private Madrasah Aliyah (MA). There are also 6 Orphanages with 243 foster children.
PLACE OF WORSHIP	The Regency has 108 Mosque, 51 Small mosque (Mushola), 4 Protestant Churches, 9 Temples and 2 Viharas.





Pesona Peluang Investasi di Kabupaten Muna Barat

PELAYANAN TERPADU SATU PINTU (PTSP) ONE-STOP INTEGRATED SERVICE (PTSP)

Berdasarkan Peraturan Bupati Muna Barat Nomor 161 Tahun 2015, Bupati Muna Barat melimpahkan kewenangan kepada Dinas Penanaman Modal dan Pelayanan Terpadu Satu Pintu (DPMPTSP) Kabupaten Muna Barat dalam memproses pelayanan administrasi, menandatangani dan menerbitkan semua dokumen perizinan dan non perizinan, menangani pengaduan masyarakat, melaksanakan penilaian kinerja aparatur dan indeks kepuasan masyarakat di lingkungan Dinas Penanaman Modal dan Pelayanan Terpadu Satu Pintu dan Tim Teknis dalam Unit Pelayanan Terpadu.

Based on the Decree of the Regent of West Muna No. 161 of 2015, the Regent of West Muna delegates authority to the Head of the One-Stop Office of Investment and Integrated Services (DPMPTSP) of West Muna Regency in the process of administrative services, signs and publishes all licensing and non-licensing documents, handles public complaints, implements performance appraisal of personnel and community satisfaction index in the environment DPMPTSP and the Technical Team in the Integrated Services Unit.

Jenis-jenis Perizinan Types of Licensing

Sektor Penanaman Modal / Investment Sector	
1	Izin Pendaftaran Penanaman Modal / Investment Registration License
2	Izin Pendirian Lembaga Pelatihan Kerja / License for Establishment of Work
Sektor Perkebunan / Plantation Sector	
3	Surat Izin Pengeluaran Hasil Pertanian / Agricultural Product Release License
4	Surat Keterangan Kelayakan Benih/Bibit setiap Salur / Certificate of Feasibility of Seeds/Seedlings Ready for Distribution
5	Izin Usaha Perkebunan / Plantation Business License
Sektor Peternakan / Animal Husbandry Sector	
6	Izin Rumah Potong Hewan / Slaughtering House License
7	Izin Pengeluaran Kulit Sapi Segar dan Kulit Sapi Kering / Dry and Wet Cow Skin Release License
8	Izin Pengeluaran Hewan Hidup Sumbangan Pihak Ketiga / Release License of Live Animals of Third Party Donations
9	Surat Izin Operasional Pembelian Ternak Potong / Operational License to Purchase Beef Cattle
Sektor Ketenagakerjaan / Manpower Sector	
10	Izin Penyimpangan Waktu Kerja dan Waktu Istirahat / License for Deviation of Work Time and Rest Time
Sektor Lingkungan Hidup / Living Environment Sector	
11	Izin Gangguan (HO)/Surat Izin Tempat Usaha (SITU) / Disturbance License (HO) / Business Site License (SITU)
12	Izin Lingkungan / Environment License
13	Izin Pengendalian Dampak Lingkungan / Environment Impact Control License
Sektor Sosial / Social Sector	
14	Izin Operasional Panti Asuhan / Orphanage Operational License
Sektor Perindustrian dan Perdagangan / Industry and Trade Sector	
15	Surat Izin Usaha Perdagangan / Trade Business License (SIUP)
16	Izin Usaha Industri / Industrial Business License
17	Surat Izin Usaha Perdagangan Minuman Beralkohol / Alcoholic Beverage Trading Business License (SIUP-MB)
18	Izin Kawasan Industri / Industrial Estate License
19	Surat Izin Tempat Usaha / Business Site License
20	Izin Reklame / Advertisement License
Sektor Perikanan dan Kelautan / Marine Affairs and Fishery Sector	
21	Surat Izin Usaha Perikanan / Fishery Business License (SIUP)
22	Surat Izin Penangkapan Ikan / Capture Fishery License (SIPI)



**Charming Investment Opportunities
in West Muna Regency**



Sektor Kesehatan / Health Sector	
23	Izin Praktek Kedokteran / <i>Medical Practice License</i>
24	Izin Praktek Bidan / <i>Midwife Practice License</i>
25	Izin Praktek Perawat / <i>Nurse Practice License</i>
26	Izin Praktek Tenaga Teknis Kefarmasian / <i>Pharmaceutical Technical Worker Practice License</i>
27	Izin Penyelenggaraan Optikal / <i>License for Optical Operation</i>
a	Apotek / <i>Pharmacy</i>
b	Balai Pengobatan / <i>Medical Centre</i>
c	Pedagang Besar Farmasi / <i>Pharmaceutical Wholesaler (PBF)</i>
28	Izin Praktek Perawat Gigi / <i>Dental Nurse Practice License</i>
a	Apotek / <i>Pharmacy</i>
b	Toko Obat / <i>Drug Store</i>
c	Toko Alat Kesehatan / <i>Medical Device Store</i>
29	Izin Praktek Fisioterapis / <i>Physiotherapist Practice License</i>
30	Izin Praktek Refraksionis Optisien / <i>Optician Refraction Practice License</i>
31	Izin Praktek Terapis Wicara / <i>Speech Therapist Practice License</i>
32	Izin Praktek Radiografer / <i>Radiographer Practice License</i>
33	Izin Praktek Okupasi Terapi / <i>Occupational Therapy Practice License</i>
34	Izin Rumah Tangga Pangan / <i>Food Household License</i>
Sektor Pekerjaan Umum / Public Work Sector	
35	Izin Usaha Jasa Konstruksi / <i>Construction Service License (IUJK)</i>
36	Izin Mendirikan Bangunan / <i>Building Construction License (IMB)</i>
Sektor Pertambangan / Mining Sector	
37	Izin Usaha Pertambangan Umum / <i>General Mining Business License</i>
38	Izin Penimbunan Bahan Bakar / <i>Fuel Storehouse License (BBM)</i>
39	Izin Mendirikan Stasiun Pengisian Bahan Bakar / <i>Fuel Station Establishment License</i>
40	Izin Pangkalan Minyak Tanah / <i>Kerosene Station License</i>
41	Izin Tambang Golongan C / <i>C Group Mine License</i>
Sektor Perhubungan/LLAJ dan Infokom / Transportation/Highway Traffic and Infocom License	
42	Izin Trayek dan Perubahan Trayek / <i>Route and Route Change License</i>
43	Izin Operasional Angkutan Umum / <i>Public Transportation Operational License</i>
44	Izin Angkutan Barang / <i>Freight License</i>
45	Izin Insidentil (Penyimpangan Trayek) / <i>Incidental (Route Deviations) License</i>
46	Izin Trayek Pelayanan Rakyat / <i>People Shipping Route License</i>
47	Izin Penggunaan Jalan di luar Kepentingan Lalu Lintas / <i>License for Usage of Roads outside of Traffic Interests</i>
48	Izin Penggunaan Trotoar dan Bahu Jalan / <i>License for Usage of Sidewalks and Roadsides</i>
49	Izin Operasional Angkutan Taxi / <i>Taxi Transportation Operational License</i>
50	Izin Usaha Parkiran / <i>Parking Business License</i>
51	Izin Usaha Angkutan / <i>Transportation Business License</i>
52	Izin Pemasangan Jaringan Instalasi Bawah Tanah / <i>Underground Installation Network Installation License</i>
53	Izin Pemungutan Hasil Hutan Kayu dan Bukan Kayu pada Hutan Produksi Alam / <i>License for Collection of Timber and Non-Timber Forest Products in Natural Production Forests</i>





Pesona Peluang Investasi di Kabupaten Muna Barat

Sektor Kehutanan / Forestry Sector	
54	Izin Pemanfaatan Kayu / <i>Timber Utilization License</i>
55	Izin Usaha Pemanfaatan Hasil Hutan Non Kayu / <i>Non-Timber Forest Products Utilization License</i>
56	Izin Usaha Industri Primer Hasil Hutan Kayu / <i>Business License for Timber Forest Products Primary Industry</i>
57	Izin Perluasan Usaha Industri Hasil Hutan Kayu / <i>Business License for Expansion of Timber Forest Product Industry</i>
58	Izin Usaha Pembaharuan Industri Primer Hutan Kayu / <i>Business License for Renewal of Timber Forest Primary Industry</i>
59	Izin Usaha Pemanfaatan Kawasan / <i>Area Utilization Business License</i>
60	Izin Survei/Penyidikan Umum/ Eksplorasi Pertambangan di kawasan Hutan / <i>License for Survey/General Investigation/Mining Exploration in Forest Areas</i>
61	Izin Usaha Pemanfaatan Hasil Hutan Kayu pada Tanaman Rakyat / <i>Business License for the Utilization of Timber Forest Products in People's Plants (IUPHHK-HTR)</i>
Sektor Pendidikan / Educational Sector	
62	Izin Operasional Institusi Pendidikan / <i>Educational Institution Operational License</i>
63	Izin Pendirian Sekolah Swasta / <i>License for Private School Establishment</i>
64	Izin Pendidikan Mengemudi / <i>Driving Educational License</i>
65	Izin Perpanjangan Operasional Institusi Pendidikan / <i>License for Extension of Educational Institutions Operation</i>
66	Izin Pendirian Lembaga Pendidikan Non-Formal / <i>Non-Formal Educational Institution Establishment License</i>
67	Izin Pendirian Sanggar Kursus / <i>Establishment of Studio Course License</i>
Sektor Aset/Kekayaan Daerah / Regional Assets/Property Sector	
68	Izin Penggunaan Gedung Pemerintah / <i>Government Building Usage License</i>
69	Izin Penggunaan Gedung Alun-Alun / <i>Square Building Usage License</i>
70	Izin Penggunaan SOR / <i>Sport Facilities Usage License</i>
71	Izin Penggunaan Rumah Dinas / <i>Official Residence Usage License</i>
Sektor Kebudayaan dan Pariwisata / Cultural and Tourism Sector	
72	Izin Usaha Hotel / <i>Hotel Business License</i>
73	Izin Pemakaian Arena Pertunjukan / <i>Performing Arena Usage License</i>
74	Izin Pusat Kebugaran / <i>Fitness Centre License</i>

Jenis-jenis Non Perizinan *Types of Non Licensing*

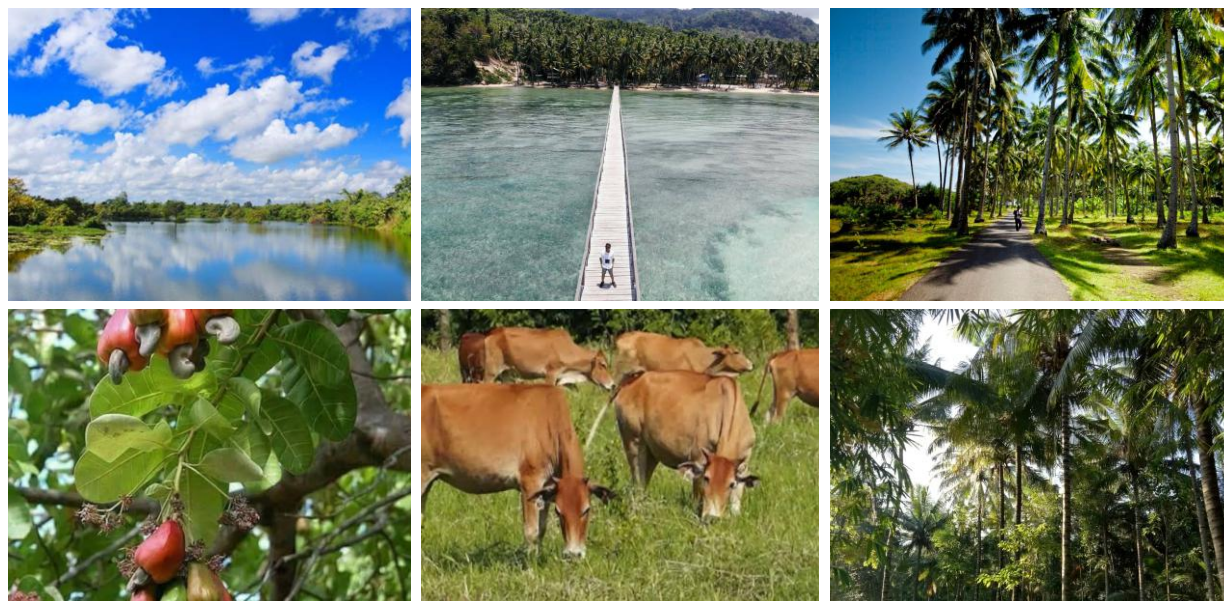
Sektor Perkebunan / Plantation Sector	
1	Surat Keterangan/Rekomendasi Berusaha / <i>Business Certificate/Recommendation</i>
2	Surat Keterangan Asal Hasil Pertanian / <i>Agricultural Product Certificate of Origin</i>
3	Surat Izin Usaha Setiap Komoditi Perkebunan dan Tanaman Pangan / <i>Business License for Every Plantation and Food Crop Commodity</i>
4	Rekomendasi Penggilingan Padi / <i>Rice Mill Recommendation</i>
5	Rekomendasi Penjualan Pestisida / <i>Sale of Pesticide Recommendation</i>
Sektor Ketenagakerjaan / Manpower Sector	
6	Rekomendasi Perpanjangan Izin Mempekerjakan Tenaga Kerja Asing / <i>Recommendation for License Extension to Employ Foreign Workers</i>
Sektor Perindustrian dan Perdagangan / Industrial and Trade Sector	
7	Tanda Daftar Perusahaan / <i>Company Registration Certificate</i>
8	Tanda Daftar Industri / <i>Industrial Registration Certificate</i>
9	Tanda Daftar Gudang / <i>Warehouse Registration Certificate</i>



**Charming Investment Opportunities
in West Muna Regency**



Sektor Pekerjaan Umum / Public Work Sector	
10	Sisa Kemampuan Nyata / <i>Real Ability Remaining</i>
11	Sewa Alat Berat / <i>Heavy Equipment Rental</i>
Sektor Perhubungan/LLAJ dan Infokom / Transportation/Highway Traffic and Infocom Sector	
12	Surat Registrasi Uji Kendaraan Bermotor Baru dan Bukan Baru / <i>New and Used Motor Vehicle Test Registration Letters</i>
13	Kartu Tanda Operasional Angkutan Barang dan Kartu Daftar Usaha Angkutan / <i>Goods Transport Operational Identity Card and Transportation Business Registration Card</i>
14	Rekomendasi Penghapusan Kendaraan Bermotor / <i>Motor Vehicle Deletion Recommendation (DEM)</i>
15	Rekomendasi Pembangunan Tower Base Transciver Station (BTS) / <i>Base Transciver Station Tower Establishment Recommendation</i>
16	Rekomendasi Pas Kecil Kapal / <i>Ship Small Pass Recommendation</i>
17	Kartu Pengawasan Angkutan Barang dan Angkutan Orang/Angkutan Pedesaan dan Perkotaan / <i>Goods and People/Rural and Urban Transportation Monitor Card</i>
Sektor Pariwisata / Tourism Sector	
18	Rekomendasi Persyaratan Dasar Penggolongan Kelas Hotel / <i>Recommendation for Basic Requirements of Classifying Hotels</i>
19	Sertifikat Penggolongan Restoran/Rumah Makan / <i>Restaurant/Dining House Classification Certificate</i>
Sektor Kehutanan / Forestry Sector	
20	Rekomendasi dalam rangka Izin Usaha Industri Primer Hasil Hutan Kayu / <i>Recommendation in the frame of a Timber Forest Product Primary Industry Business License</i>
21	Rekomendasi dalam rangka pinjam pakai kawasan Hutan / <i>Recommendation for Leasing Forest areas</i>
22	Rekomendasi Pencadangan Lahan untuk Kegiatan Non-Kehutanan / <i>Land Reserve Recommendation for Non-Forestry Activities</i>
23	Rekomendasi dalam rangka tukar menukar Kawasan hutan / <i>Recommendations for the Exchange of Forest Zones</i>





POTENSI DAN PELUANG INVESTASI POTENTIAL AND INVESTMENT OPPORTUNITIES

**Sektor Pertanian Tanaman Pangan dan Hortikultura,
Perkebunan dan Peternakan**



Penggunaan lahan untuk sawah tahun 2018 mencapai 4.891 ha yang terdiri dari 3.241 ha sawah irigasi dan 1.650 ha sawah non irigasi. Wilayah dengan lahan sawah irigasi terluas berada di Kecamatan Tiworo Kepulauan. Tanaman pangan yang diusahakan di Kabupaten Muna Barat yang utama yaitu; padi sawah, jagung, kacang tanah, kacang kedelai, ubi kayu, dan ubi jalar.

- **TANAMAN PANGAN:** Padi sawah berada pada 1.068 ha luas panen, produksi: 3.603 ton; jagung: 6.779 ha, 20.221 ton; ubi kayu: 252 ha, 8.076 ton; ubi jalar: 54 ha, 710 ton; kacang tanah: 1.596 ha, 748 ton; kacang kedelai: 93 ha, 748 ton; dan kacang hijau: 6 ha, 4 ton.
- **TANAMAN HORTIKUTURA:** Ragam tanaman hortikultura yang diusahakan di Kabupaten Muna Barat cukup bervariasi. Untuk tanaman sayuran terdapat cabai rawit, kacang panjang, kangkung, petsai/sawi, cabai besar, bawang daun, tomat, terung, ketimun, dan lainnya. Tanaman menghasilkan produksi yang paling besar adalah kacang Panjang (115 ha, 409 ton) dan tomat (77 ha, 373,1 ton). Tanaman buah-buahan seperti pepaya, pisang, jeruk siam, rambutan, dan mangga menjadi komoditas utama di Muna Barat. Produksi kelima komoditas buah-buahan tersebut masing-masing: 7.864 quintal, 41.931 quintal, 17.292 quintal, 13.134 quintal, dan 5.554 quintal.
- **PERKEBUNAN:** Luas areal tanaman perkebunan (2017) adalah: 3.112,5 ha; 1.102,6 ton (kelapa); 171,3 ha; 29,50 ton (kopi); 6.023 ha; 5.086,0 ton (kakao). Jambu mete menjadi komoditi perkebunan yang paling banyak diusahakan di Muna Barat. Tahun 2017 luas tanam jambu mete mencapai 9.068 ha dengan produksi 349,4 ton.

**The Sector of Food Crops and Horticulture,
Plantation and Animal Husbandry**



The use of land for paddy fields in 2018 reached 4,891 ha which consists of 3,241 ha of irrigated and 1,650 ha of non-irrigated paddy fields. The area with the largest irrigated paddy fields was in Tiworo Islands District. The main food crops cultivated in West Muna Regency are wetland paddy, maize, peanuts, soybeans, cassava, and sweet potatoes.

- **FOOD CROPS:** Wetland paddy was at 1,068 ha harvested area, production: 3,603 tons; maize: 6,779 ha, 20,221 tons; cassava: 252 ha, 8,076 tons; sweet potato: 54 ha, 710 tons; peanut: 1,596 ha, 748 tons; soybeans: 93 ha, 748 tons; and mungbeans: 6 ha, 4 tons.
- **HORTICUTURA PLANTS:** The types of horticultural crops cultivated in West Muna Regency is quite varied. For vegetable crops there are chilies, long beans, water cabbage (kangkong), Chinese cabbage/mustard green, large red pepper, leeks, tomatoes, eggplant, cucumbers, and others. The most produced plant was long beans (115 ha, 409 tons) and tomatoes (77 ha, 373.1 tons). Fruit plant like papaya, banana, citrus, rambutan, and mango become a major commodity in West Muna. The production of the five fruit trees are : 7,864 quintal, 41,931 quintal, 17,292 quintal, 13,134 quintal and 5,554 quintals respectively.
- **PLANTATION:** The total plantation plants area (2017) were 3,112.5 ha, production of 1,102.6 tons (coconut); 171.3 ha, 29.50 tons (coffee); 6,023 ha, 5,086.0 tons (cacao). Cashew nut is the most cultivated in West Muna. In 2017 the acreage of cashew reached 9,068 ha with production of 349.4 tons.



**Charming Investment Opportunities
in West Muna Regency**



- **PETERNAKAN:** Kabupaten ini memiliki 32.216 sapi potong, 180 kuda, 6.600 kambing dan 350 babi; serta 740.000 ayam buras; 25.000 ayam petelur; 90.000 ayam pedaging; 7.219 itik dan 200 itik Manila.

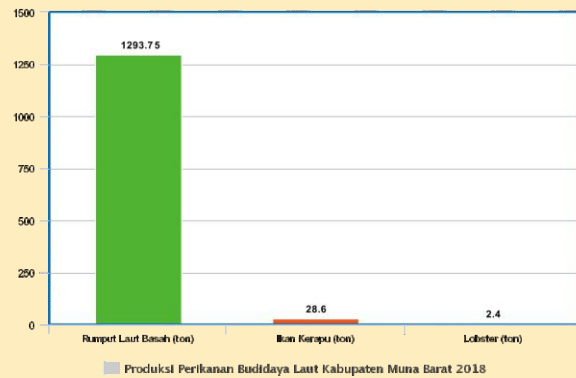


- **LIVESTOCK:** The Regency has 32,216 beef cattle, 180 horses, 6,600 goats and 350 pig; as well as 740,000 native chickens; 25,000 layers; 90,000 broilers; 7,219 ducks and 200 Manila ducks.



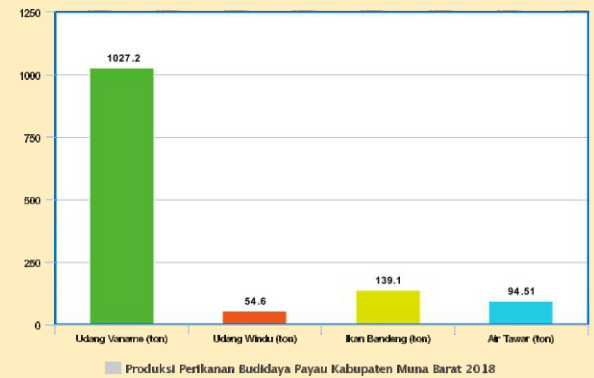
Sektor Perikanan dan Kelautan

Produksi perikanan di Kabupaten Muna Barat terdiri dari Perikanan Tangkap dan Perikanan Budidaya. Pada tahun 2018 Produksi Perikanan Tangkap mencapai 10.982 ton (laut: 10.911 ton dan perairan umum: 70,95 ton). Produksi Perikanan Budidaya Laut tercatat: 1.293,75 ton rumput laut basah; 28,60 ton ikan kerapu; 2,40 ton lobster. Perikanan Budidaya Air Payau: 1.027,20 ton udang Vaname; 54,6 ton udang Windu; 139,10 ton ikan Bandeng; sedangkan ikan Air Tawar tercatat 94,51 ton.



Fisheries and Maritime Sector

Fishery Production of West Muna Regency consists of Capture Fisheries and Aquaculture. In 2018 the production of Capture Fisheries reached 10,982 tons (from sea: 10,911 tons and from public waters: 70.95 tons). The production of Aquaculture was recorded: 1,293.75 tons of wet seaweed; 28.60 tons of grouper; 2.40 tons of lobster. Brackish Aquaculture Fisheries: 1,027.20 tons of Vaname shrimp; 54.6 tons of Jumbo Tiger Prawn; 139.10 tons of milkfish, while breams were about 94.51 tons.



Sektor Kehutanan

Hutan masih merupakan salah satu kawasan Kabupaten Muna Barat yang terbesar. Jenis kawasan hutan yang terluas di Kabupaten Muna Barat adalah hutan produksi, yaitu sebesar 18.667 ha atau 75,02% dari luas seluruh kawasan hutan di Kabupaten Muna Barat. Sedangkan kawasan hutan lindung di Kabupaten Muna Barat seluas 6.217 ha atau sekitar 24,98 % dari seluruh luas kawasan hutan di Kabupaten Muna Barat.

Forestry Sector

Forest is still one of the largest areas of West Muna Regency. The widest area of forest in West Muna is a Production Forest, which amounted to 18,667 ha or about 75.02% of total area of forest land in West Muna. While the Protected Forest areas in West Muna of about 6,217 ha, or approximately 24.98% of the entire forest area in West Muna Regency.





Pesona Peluang Investasi di Kabupaten Muna Barat

Sektor Industri

Pembangunan di Bidang Industri ditujukan untuk memperluas kesempatan kerja, meratakan kesempatan berusaha, meningkatkan ekspor, menunjang pembangunan daerah, serta memanfaatkan Sumber Daya Alam dan Sumber Daya Manusia. Berpijak dari amanat tersebut maka Pemerintah Daerah Kabupaten Muna Barat memberikan kesempatan seluas-luasnya kepada masyarakat untuk membuka berbagai macam kegiatan dalam Bidang Industri. Di Kabupaten Muna Barat tahun 2018 tercatat ada 142 Industri Kimia, Logam, dan Mesin (374 tenaga kerja; Rp. 6.518.950.000 nilai Investasi dan Rp. 79.761.390.000 nilai produksi); 411 Industri Aneka (1.334 tenaga kerja; Rp. 9.493.600.000; dan Rp. 70.760.490.000 nilai produksi); 51 Industri Hasil Pertanian dan Kehutanan (138 tenaga kerja; Rp. 3.018.150.000 nilai Investasi; dan Rp. 3.787.500.000 nilai Produksi). Menurut skala industri terdapat 3.439 industri terdiri dari: 8 Industri Sedang, 68 Industri Kecil dan 3.363 Industri Kerajinan Rumah Tangga. Industri paling banyak ada di Kecamatan Kusambi berjumlah 620 industri.

Industrial Sector

Development in the Industrial Field intended to expand the opportunities of work, equal business opportunity, increase exports, support regional development, as well as take advantage of Natural and Human Resources. Based on the mandate, the Regional Government of West Muna Regency provides the widest possible opportunity for the community to open various kinds of activities in the Industrial Sector. In West Muna Regency in 2018, there were 142 the Chemicals, Metals, and Engine Industries (374 workers; IDR 6,518,950,000 of investment value and IDR 79,761,390,000 the value of production); 411 Various Industries (1,334 workers; IDR 9,493,600,000 investment value; and IDR 70,760,490,000 value of production); 51 Agricultural and Forestry Production Industries (138 workers; IDR. 3,018,150,000 investment value; and IDR 3,787,500,000 production value). According to the industrial scale, there are 3,439 industries comprised of 8 Medium-, 68 Small- and 3,363 Home Industries. The most numbers are in Kusambi District with 620 industries.



Sektor Transportasi

Dinas Perhubungan juga mempunyai Perencanaan Pengembangan Infrastruktur Transportasi (Laut) sebagai berikut: Dermaga rakyat Latawe; akses jangkauan yang melayani angkutan penumpang dari Kota Kendari – Muna Barat atau sebaliknya dengan kapal cepat/speed boat; Dermaga Rakyat Pajala; akses jangkauan melayani angkutan penumpang dari Bombana – Muna Barat atau sebaliknya dengan kapal cepat/ speed boat; Dermaga Rakyat di pulau-pulau kawasan Selat Tiworo meliputi dermaga rakyat pulau Maginti, Pulau Balu, Pulau Gala, Pulau Santigi, Pulau Mandike, Pulau Tasipi, Pulau Katela, Pulau Bangko, dan dermaga Wisata Pualu Indo.

Transportation Sector

The Transportation Service also has a Planning for Marine Transportation Infrastructure Development as follows: Latawe People's Dock; the access reaches to serve passengers transportation from Kendari to West Muna or vice versa with fast boat/speed boat; Pajala People's Dock; the access reaches to serve passenger transportation from Bombana to West Muna or vice versa by fast boat/speed boat; People's docks on the islands of the Tiworo Strait region include the People's piers in the Islands of Maginti, Balu, Gala, Santigi, Mandike, Tasipi, Katela, Bangko, and Indo Island Tourism Pier.



Charming Investment Opportunities in West Muna Regency



Sektor Pariwisata

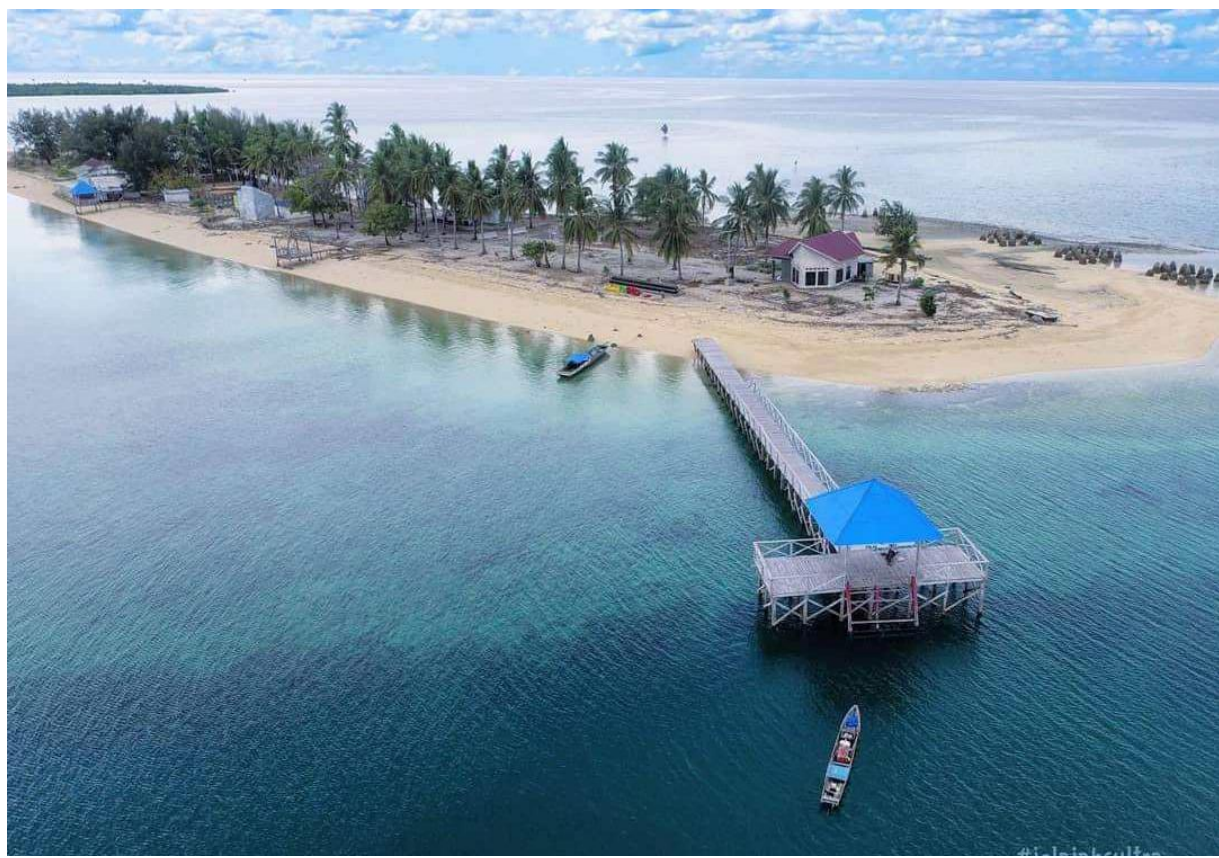
Di Kabupaten Muna Barat terdapat beberapa fasilitas akomodasi, seperti hotel, losmen, dan penginapan. Fasilitas penginapan ini, terpusat di Laworo ibukota Kabupaten Muna Barat. Jumlah hotel/losmen/penginapan yang ada di Kabupaten Muna Barat tahun 2018 berjumlah 1 (Dina Hotel di Desa Wapae). Jumlah kamar yang disewakan sebanyak 11 kamar dengan jumlah tempat tidur sebanyak 13 tempat tidur.

Beberapa Tempat Wisata yang sangat cantik dan mempesona di Kabupaten Muna Barat, adalah:

Tourism Sector

In West Muna Regency there are some accommodation facilities, such as hotels, inns and lodgings. The facilities are centrally in Laworo as the capital of West Muna. The number of hotels/inns/lodges in West Muna Regency in 2018 amounted to only 1 (Dina Hotel in Wapae Village). The number of rent rooms as many as 11 rooms with 13 beds.

Some of the very beautiful and enchanting tourism objects in West Muna Regency are:



- **PULAU INDO:** Pulau Indo terletak pada gugusan kepulauan tiworo, sebelah barat pulau muna, Sulawesi Tenggara. Pulau tak berpenghuni itu memang khusus hanya dijadikan sebagai destinasi wisata bahari Muna Barat. Di sepanjang Pulau Indo terbentang panorama pantai yang indah, birunya air laut yang jernih, serta pasirnya yang putih.
- **INDO ISLAND:** Indo Island is in the Tiworo Islands Cluster, in the western side of Muna Island of Southeast Sulawesi. The uninhabited island is indeed specifically only used as a Marine Tourism Destination in West Muna. Along the Indo Island there is a panoramic view of a beautiful beach, clear blue sea water and white sand.





Pesona Peluang Investasi di Kabupaten Muna Barat



- **DANAU GEMPOL:** mirip dengan wisata yang ada di Dusun Bambu, Lembang, Bandung Barat. Pengunjung akan disuguhkan pemandangan danau dengan air yang masih sangat jernih. Selain itu, pengunjung juga bisa menyusuri jalan di atas danau yang dibuat dari bambu, seperti ke dalam suasana pedesaan tempo dulu.
- **DESA AGRO WISATA 'ABADI JAYA':** Desa Agro Wisata adalah suatu wilayah yang dulunya merupakan kawasan transmigrasi. Sehingga penduduk Desa Agro Wisata berasal dari suku yang berbeda-beda. Meskipun demikian, tidak pernah ada gesekan antar warga di desa ini. Berkunjung ke sini, pengunjung akan menjumpai banyak area persawahan dengan pemandangan yang alami dan udara yang sejuk, kolam ikan dan beberapa perkebunan melon, coklat, hingga sayur-mayur.



- **PULAU APUNG "PULAU BANGKOK":** wilayah yang berada di atas laut dengan pemandangan yang cukup menyejukkan mata. Untuk bisa sampai ke tempat ini, pengunjung harus datang ke Pelabuhan speed boat yang ada di Desa Pajala, dan kemudian menyeberang dengan menggunakan perahu nelayan dengan biaya sewa yang cukup terjangkau. Pengunjung bisa berjalan menyusuri jalanan yang terapung di atas laut dan melihat rutinitas yang dilakukan oleh Suku Bajo di atas Pulau Apung.



- **LAKE GEMPOL:** is like a tour in the Bamboo Village of Lembang in West Bandung. In here visitors will be featured by a view of the lake with the very clear water. In addition, visitors can also go along the road above the lake made of bamboo as into a past rural atmosphere.
- **'ABADI JAYA' AGRO TOURISM VILLAGE:** the Agro-Tourism Village is an area that was once a transmigration area. So that the residents of the Agro-Tourism Village came from different tribes. Even so, there has never been any friction between residents in the Village. Visiting here, visitors will find many paddy fields with natural scenery and cool air, fishponds and several plantations of melons, cacao, to vegetables.



- **BANGKOK ISLAND, A "FLOAT ISLAND":** an area above the sea surface with a view that is quite soothing to the eye. To get to the place, visitors must come to the speed boat port in Pajala Village, and then cross by fishing boat with an affordable rental fee. Visitors can walk down the floating streets above the sea and see the routines carried out by the Bajo Tribe on the Floating Island.



**Charming Investment Opportunities
in West Muna Regency**



- **PULAU GALA:** Pulau ini hanya didiami oleh beberapa jiwa, dan kehidupan mereka jauh dari dunia luar. Banyak hal yang bisa dilakukan di sini, mulai dari memancing, diving, hingga mencoba masakan khas warga setempat.



- **PULAU GALA KECIL:** ukuran pulauanya yang lebih kecil ketimbang Pulau Gala, memiliki banyak hamparan pasir putih bersih dan bebatuan yang menambah keeksotisan. Berbeda dari Pulau Gala, Pulau Gala Kecil tidak berpenghuni, sehingga alam di sana dijamin masih 'perawan'.
- **PEMANCINGAN PARURA JAYA:** tempat memancing dengan suasana alam yang masih asri yang berada tepat di poros menuju ke SP-9.
- **PANTAI PAJALA:** Pantai Pajala menawarkan keindahan pesisirnya dan juga pulau-pulau yang ada di sekitarnya, cocok untuk dijadikan sebagai spot snorkling, dengan alam bawah lautnya yang sangat indah.
- **PEMANDIAN WAKANTE:** Keindahan (eksotisme) suasana permandian (objek wisata) Wakante, terletak di Desa Latugho, Kecamatan Lawa, Kabupaten Muna Barat (Mubar). Menjadi daya tarik bagi para Pengunjung atau Wisatawan, hingga menjadi salah satu pilihan wisata menarik di hari libur. Objek Wisata Wakante, selain memiliki nuansa alam yang cukup menarik dan sejuk. Juga lokasi permandian Wakante cukup gampang dijangkau oleh para Pengunjung atau Wisatawan. Yakni terletak sekitar 100 meter (m) dari ruas jalan poros Latugho, kompleks pemukiman warga.

- **GALA ISLAND:** The island is inhabited by only a few people, and their lives are far from the outside world. Many things can be done here, ranging from fishing, diving, up to trying local specialties.
- **GALA KECIL ISLAND:** smaller size than Gala Island, has a lot of clean white sand and rocks that add to the exoticism. Different from Gala Island, Gala Kecil Island is uninhabited, so nature is guaranteed to be still 'virgin'.



- **PARURA JAYA FISHING GROUND:** a fishing ground with a beautiful natural atmosphere which is right on the shaft leading to SP-9.
- **PAJALA BEACH:** Pajala Beach offers the beauty of its coast and the islands around it, suitable to be used as a snorkelling spot, with a very beautiful underwater world.



- **WAKANTE BATH:** The beauty (exoticism) atmosphere of Wakante Baths (tourism object), located in Latugho Village of Lawa District, being an attraction for visitors or tourists, to become one of the attractive tourism choices on holidays. Wakante Tourism Object, besides having quite interesting and cool natural feel, also the location of the Wakante bath is quite easy to reach by visitors or tourists. That is located about 100 m from the Latugho shaft road segment, in the residential complex.





Pesona Peluang Investasi di Kabupaten Muna Barat

Wisata Budaya dan Sejarah Cultural and Historical Tourism

- WISATA BUDAYA "POGIRAHA ADHARA" (PERKELAHIAN KUDA):** Perkelahian kuda merupakan salah satu atraksi budaya warisan para Raja-raja Muna yang sudah turun temurun dilakukan oleh masyarakat Muna Barat. Tradisi Adu Kuda ini hanya satu-satunya di Indonesia, yang dalam bahasa lokal disebut "Pogiraha Adhara" diadakan di Kecamatan Lawa dan rutin dilakukan hampir setiap bulan sebagai bagian dari hiburan rakyat, sekaligus wisatawan lokal maupun asing.
 - WISATA SEJARAH BENTENG TIWORO:** merupakan rekam jejak dan keberadaan Kerajaan Tiworo yang masih dapat disaksikan sampai saat ini, salah satunya Benteng Tiworo yang terletak di tepi Sungai Kambara. Lokasi tersebut menjadi pusat pemerintahan Kerajaan Tiworo, dan ditengah-tengahnya terdapat sebuah mesjid bernama Sangia Barakati.
 - LAYANG-LAYANG PRASEJARAH TERTUA DI DUNIA "KAGHATI KOLOPE":** Layangan (Kaghati) Kolope adalah budaya dari zaman prasejarah pulau Muna yang tidak hanya memiliki nilai sejarah yang tinggi tetapi juga karena layangan ini dibuat dari bahan alami oleh nenek moyang mereka. Penduduk setempat menyebut layangan tua ini dengan nama Kaghati Kolope. Layang-layang daun kolope berulang kali menjuarai Festival layang-layang internasional yang diikuti oleh LA ODE POMUSU yang berasal dari Kecamatan Lawa Kabupaten Muna Barat dan telah membuat pulau Muna terkenal di dunia. Layang-layang tradisional dari Pulau Muna ini terbuat dari lembaran daun kolope (daun gadung) yang telah kering.
- CULTURAL TOURISM OF "POGIRAHA ADHARA" (HORSE FIGHTING):** Horse fighting is one of the cultural attractions of the Muna Kings that has been passed down from generation to generation by the people of West Muna. The tradition of horse fighting is the only one in Indonesia, which in the local language is called "Pogiraha Adhara" is held in Lawa District and is routinely carried out almost every month as part of public entertainment, as well as local and foreign tourists.
 - TIWORO FORTRESS HISTORICAL TOURISM:** is a track record and the existence of the Kingdom of Tiworo which can still be witnessed until now, one of which is the Tiworo Fortress located on the banks of the Kambara River. The location is in the centre of Government of the Kingdom of Tiworo, and in the centre there is a mosque called Sangia Barakati.
 - THE OLDEST PREHISTORIC SITE IN THE WORLD, "KAGHATI KOLOPE":** Kite (Kaghati) Kolope is a culture from the prehistoric times of Muna Island which not only has a high historical value but also because the kite was made from natural ingredients by their ancestors. The locals call the old kite by the name of Kaghati Kolope. The Kolope leaf kite has repeatedly won the international kite festival, which was followed by LA ODE POMUSU from Lawa District, West Muna Regency and has made Muna Island as the World-Famous Area. The traditional kite from Muna Island is made from dried leaves of kolope (a kind of tuberous plants like yam).



*Charming Investment Opportunities
in West Muna Regency*



**DATA TABULATION
REGIONAL LEADING SECTOR OF WEST MUNA REGENCY
FOR ACTIVITIES OF FOREIGN DIRECT INVESTMENT (FDI/PMA) AND DOMESTIC INVESTMENT (DI/PMDN)**

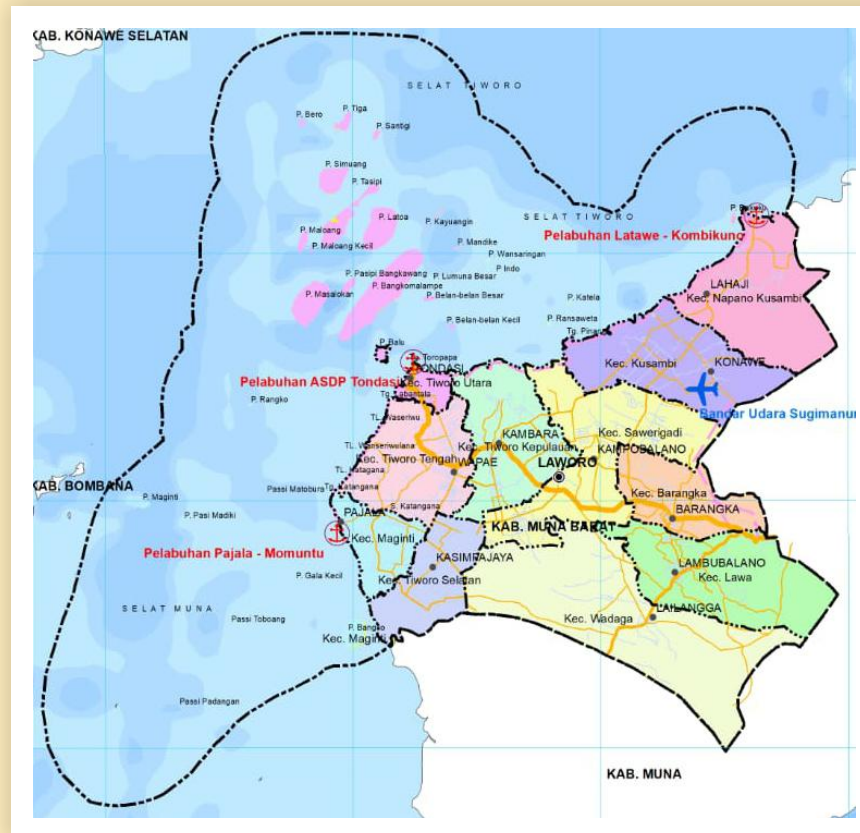
NO	SECTOR	INVESTMENT PROJECT	LOCATION	ORGANIZED
1	AGRICULTURE	Production Improvement of Food Crops, Horticulture, Plantation and Animal Husbandry.	West Muna Regency	Community
2	MARINE AND FISHERY	Production of Capture Fisheries and Aquaculture.	West Muna Regency	Community
3	ENERGY AND MINERAL RESOURCES	Development of Electricity and Clean Water Facilities and Infrastructure in meeting the needs of the Regency Area.	West Muna Regency	Local Government
4	FORESTRY	Utilization of Forest Products by Meeting Sustainable Principles.	West Muna Regency	Local Government
5	TRANSPORTATION	Development of Sea Transportation Infrastructure by building and upgrading ports.	West Muna Regency	Local Government
6	TOURISM	<ul style="list-style-type: none"> • Development of hospitality facilities, the Travel Industry or Travel Bureau. • Development of Tourism Support Facilities. • Development of Tourism Objects; and • Development of supporting facilities for accommodation (restaurants, cafes, salons and spas, sports facilities, etc.). 	West Muna Regency	Local Government and Community





**Pesona Peluang Investasi
di Kabupaten Muna Barat**

**PETA KABUPATEN MUNA BARAT
MAP OF WEST MUNA REGENCY**



KONTAK INVESTASI :



**Dinas Penanaman Modal dan Pelayanan Terpadu Satu Pintu
Kabupaten Muna Barat**
Kompleks Perkantoran Bumi Praja Laworo – Desa Wuna, Kab.Muna Barat, Provinsi
Sulawesi Tenggara
Email : dpmpspmubar01@gmail.com

Contact Person :
Bpk. Liber, S.Pt., M.Si. : Kadis Penanaman Modal Hp. 082292093013

