

# Video Security Solution for Buses



# Video Security Solution for Buses

Onboard Security

**HIKVISION**

Distributed by



## Headquarters

No.555 Qianmo Road, Binjiang District,  
Hangzhou 310051, China  
T +86-571-8807-5998  
overseasbusiness@hikvision.com

 Hikvision  hikvision  HikvisionHQ  HikvisionHQ  Hikvision\_Global  Hikvision Corporate Channel

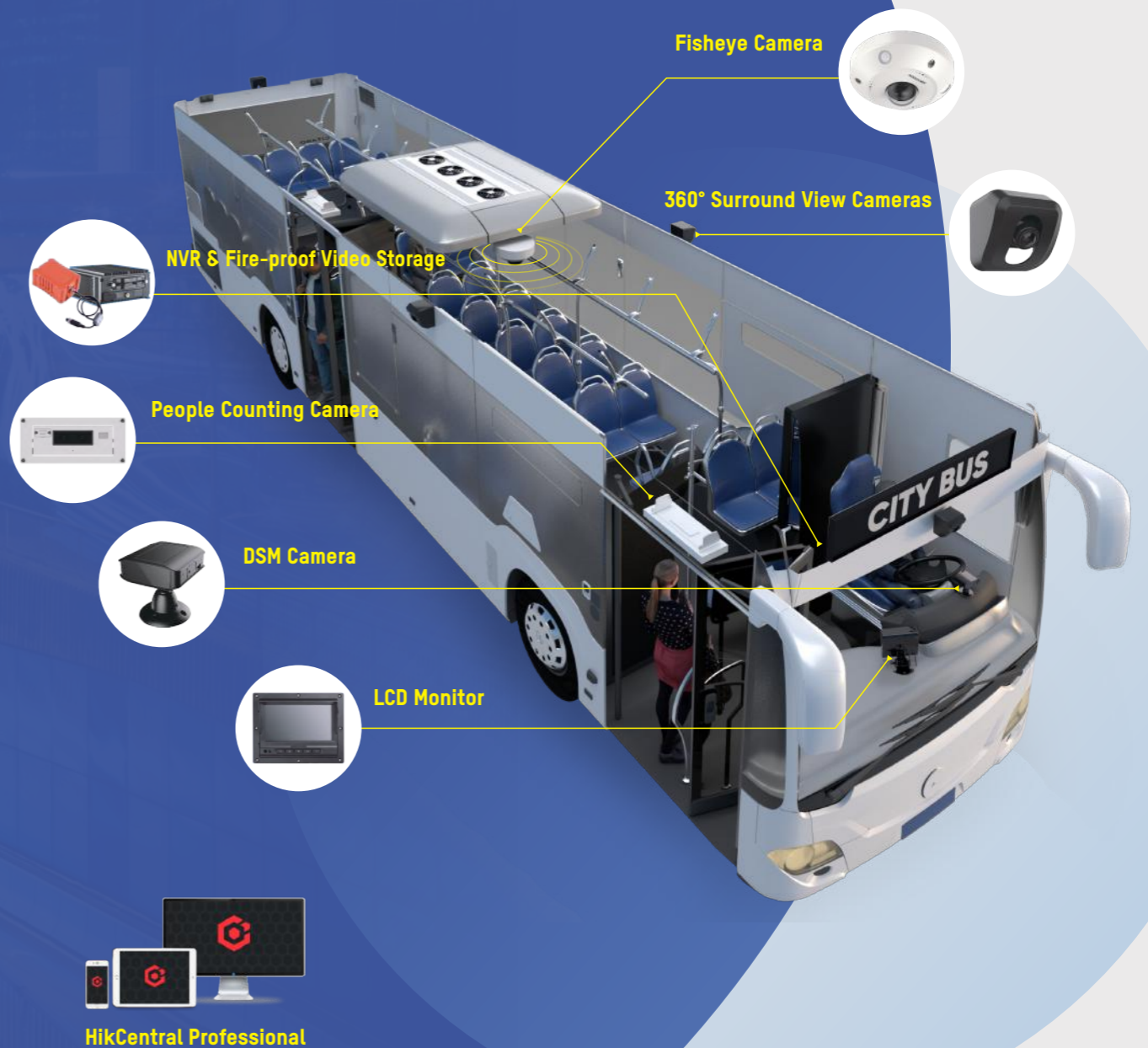
**HIKVISION**

# Video Security Solutions for Buses

Public buses are key elements in city life around the world. They reduce the number of private automobiles on the road and thereby improve transportation environments and reduce traffic pressures – not to mention providing essential transportation for millions of people every day, on every continent.

Security for system operators, passengers and drivers, however, must overcome a number of challenges to be effective, such as lack of evidence for traffic accidents, theft and other crimes on the bus, fatigued driving, fare dodging, and more. Nevertheless most of buses cannot provide high definition video monitoring and limited field of view to maintain a safe and effective operation. Lack of intelligent management, bus scheduling and congestion cannot be arranged properly.

But today, Hikvision offers the optimal video security solution for all kinds of bus systems and the people involved. Read on to find out more.

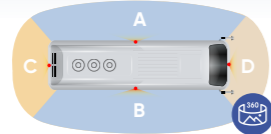


# Solution Structure

## 01 Video Security



The Video Security System provides **high-definition** indoor and outdoor monitoring for driving support and keeps records to provide evidence of incidents. **360° panoramic** camera with all round view offers a fundamental basis for safer driving. Moreover, **outdoor cameras** offer practical drive assistance to reinforce the driving safety.



## 02 People Counting

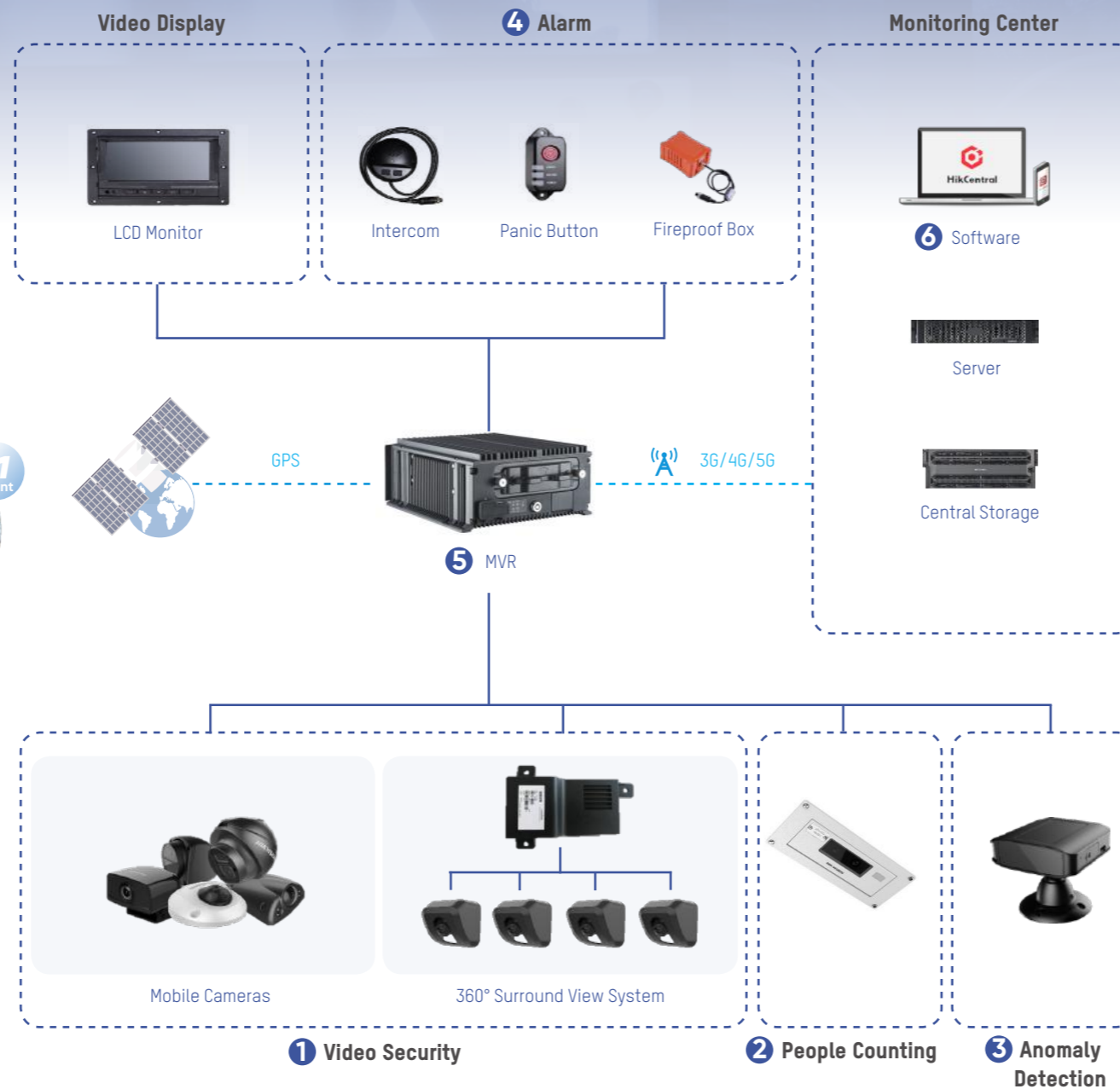
The People Counting Camera can intelligently count the number of passengers getting on and off, and distinguish children from adults by achieving accurate height measurements and head-to-shoulder ratios. After collecting passenger flow information, the data will be analyzed for better bus scheduling, fare checking, and further operational analysis.



## 03 Anomaly Detection



The DSM Camera can intelligently detect potential risks. By doing so, drivers can navigate prudently with prudent awareness.



## 04 Alarm Management

The Alarm System includes emergency, fence-crossing, safe driving, and deviation alarms. For emergencies, the driver can notify the platform through the alarm button or speak through a two-way intercom. For driving alarms, like deviation and fence-crossing, the platform can receive the real-time video and bus location to maintain the safe operation. Besides, anomaly detection will also provide prompt alarms for safe driving.



## 05 Transmission Network

The MVR communicates with the platform using a 3G/4G communication module. Also, the communication module now supports 5G connectivity, which ensures a faster and more stable connection. Along with that, the build-in GPS module is mounted on the vehicle for real-time positioning and video display.



\* Supports: 2.4G & 5GWi-Fi  
FDD LTE: B1/B2/B3/B4/B5/B7/B8/B20/B28, TDD LTE: B40

## 06 Management Platform

The whole system is managed by Hikcentral Professional, which conveniently provides functions like video monitoring, recording, playing back footage, real-time positioning, tracked playback, data statistics, and more. The operator can set up automatic video backup according to time and bus number.

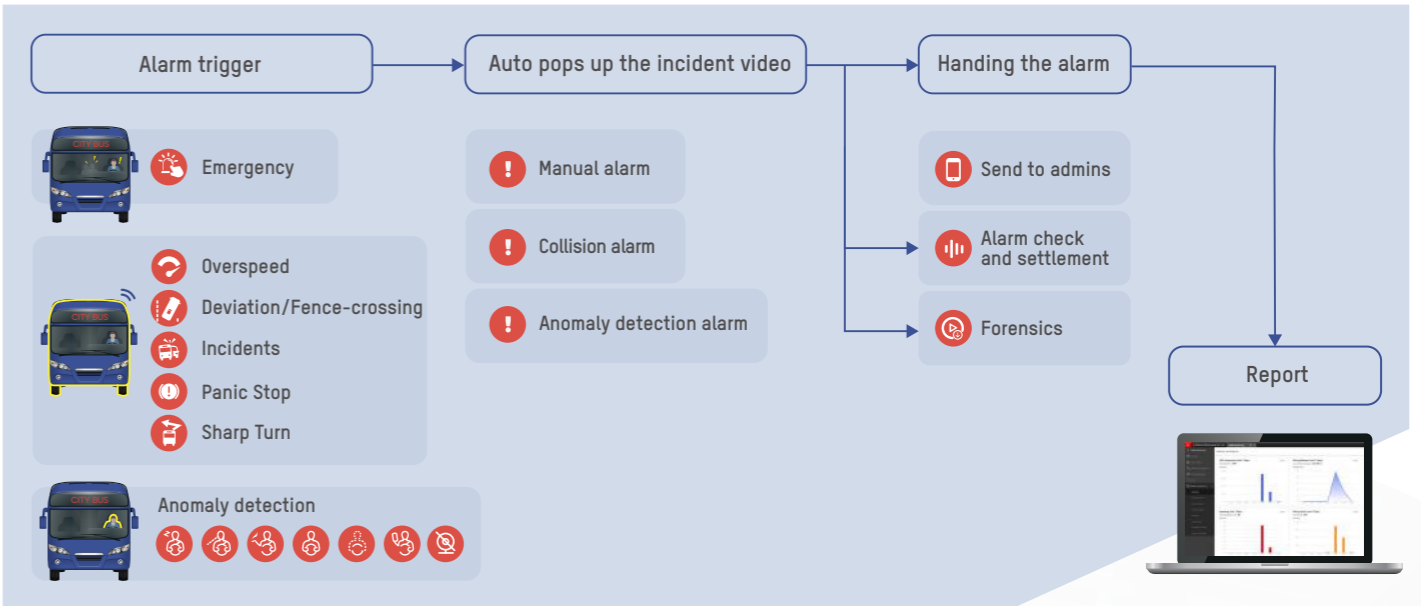




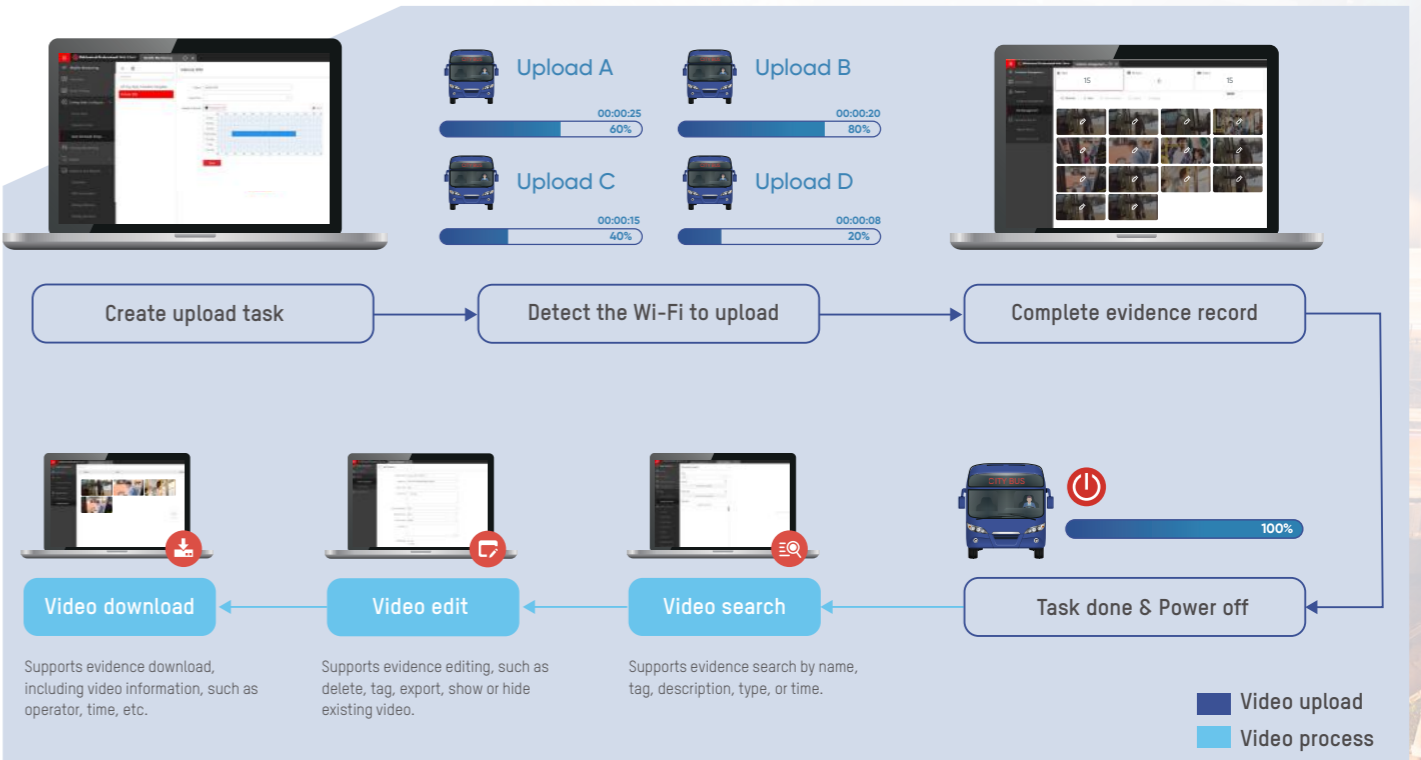
# System Function

This Bus Security Solution provides effective video monitoring and vehicle control. Video and audio data are collected by on-board cameras and audio perception. Audio and video data can be stored, backed up, and uploaded to the platform for viewing and playback. The operator can browse real-time video with the user-friendly mobile phone app. The GPS function pops up with real-time positioning, and route and fence-crossing detections, while facilitating vehicle control.

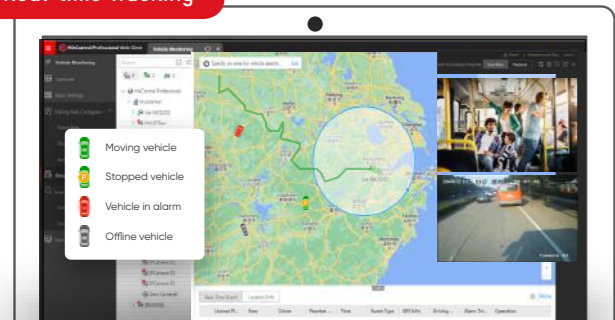
## Alarm Management



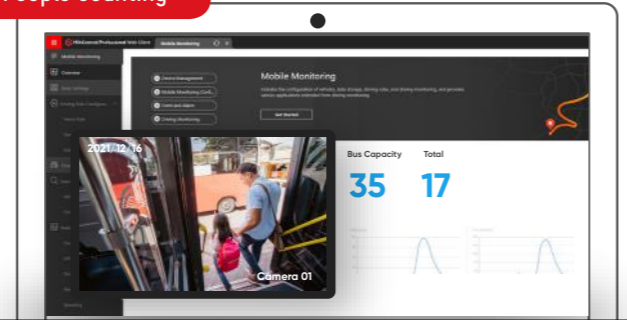
## Intelligent Video Management



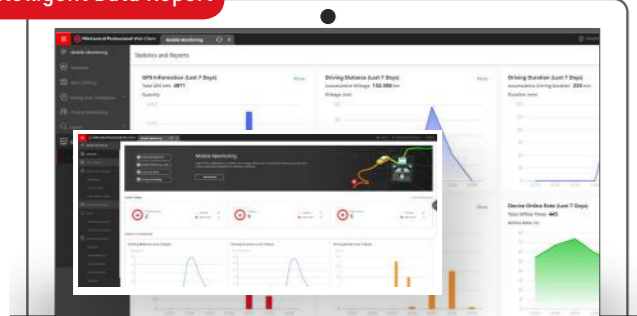
### Real-time Tracking



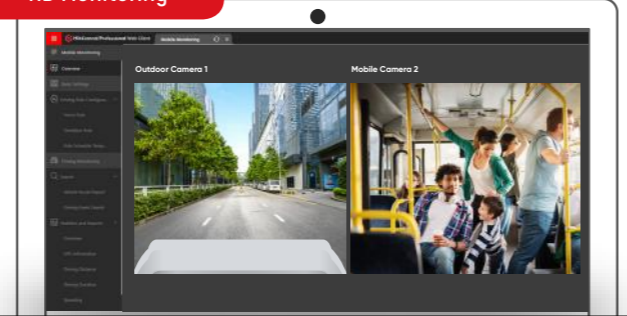
### People Counting



### Intelligent Data Report



### HD Monitoring



\* GPS Information Report, Driving Distance Report, Driving Duration Report, Speeding Report, Driving Event Report (including DSM), Device Online Rate Report, etc

# Product Features

## Mobile NVR/DVR



### Reliable Power Supply Design

- Power supply supports 8-36 VDC
- Electromagnetic immunity design conforms to the automobile ISO-7637 electromagnetic standard
- Suitable for all types of vehicles



### No Break Power Design

- First to be utilized in the industry
- Ensures video is written to the hard drive at the moment of power failure



### GPS Filtering

- Equipped with high-sensitivity antenna and GPS filtering algorithms, GPS Filtering resolves problems with fixed-point drift, velocity drift, and other abnormal data. Moreover, supporting data retransmission, the challenge of information loss without internet will be fixed properly.



### Rich Interfaces

- Highly-functional hardware interfaces – such as Standard M12-D Code, RJ45, and other signals – meet a multitude of application requirements and scenarios



### Anti-seismic Design

- Top-rated shockproof hard drives employed
- Patented metal air bag damping technology



### Perfect Video Recording

- Supports a variety of storage media
- Supports SD card redundancy recording when if hard drive is damaged
- Supports fire box storage / redundancy recording



### Aviation Gyroscope

- Built-in G-sensor & gyroscope sensor provide emergency response to collision and rollover accidents to restrict or eliminate dangerous driving habits such as rapid acceleration, deceleration, or braking, and turning too sharply



### Dual System Backup

- Dual system firmware is built in the vehicle host to ensure normal operation of the device after restarting



### IK10+ Impact Protection

- Protected against 20-joule impacts
- Equivalent to impact of a 5 kg mass
- Dropped from 400 mm above impacted surface



### IP68 Waterproof Rating

- Water pressure: 400 KPa
- Water flow: 100L/min
- Depth: 2.5 – 4 m
- Test duration: >3 mins

## Mobile Camera



### HD Video Security

- All-round cameras with high definition, including 2MP, 5MP, 6MP, and 12MP, can provide better recording, tracking, and deterrence



### Intelligent Heating Control

- Outdoor Cameras, like XM65 series, come up with heating module, which operate based on outdoor temperatures, and best in ambient temperatures from -40° to 70°C

## Certifications

All devices of Hikvision bus solution qualify for those certifications.

### EMC/LVD/RED



### Safety



### Environment



### E-MARK



### Flame retardant certification



EN45545

### Railway

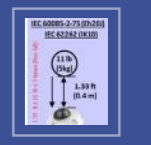


EN 50155-2017 and EN 50121-3-2

### Degrees of Protections

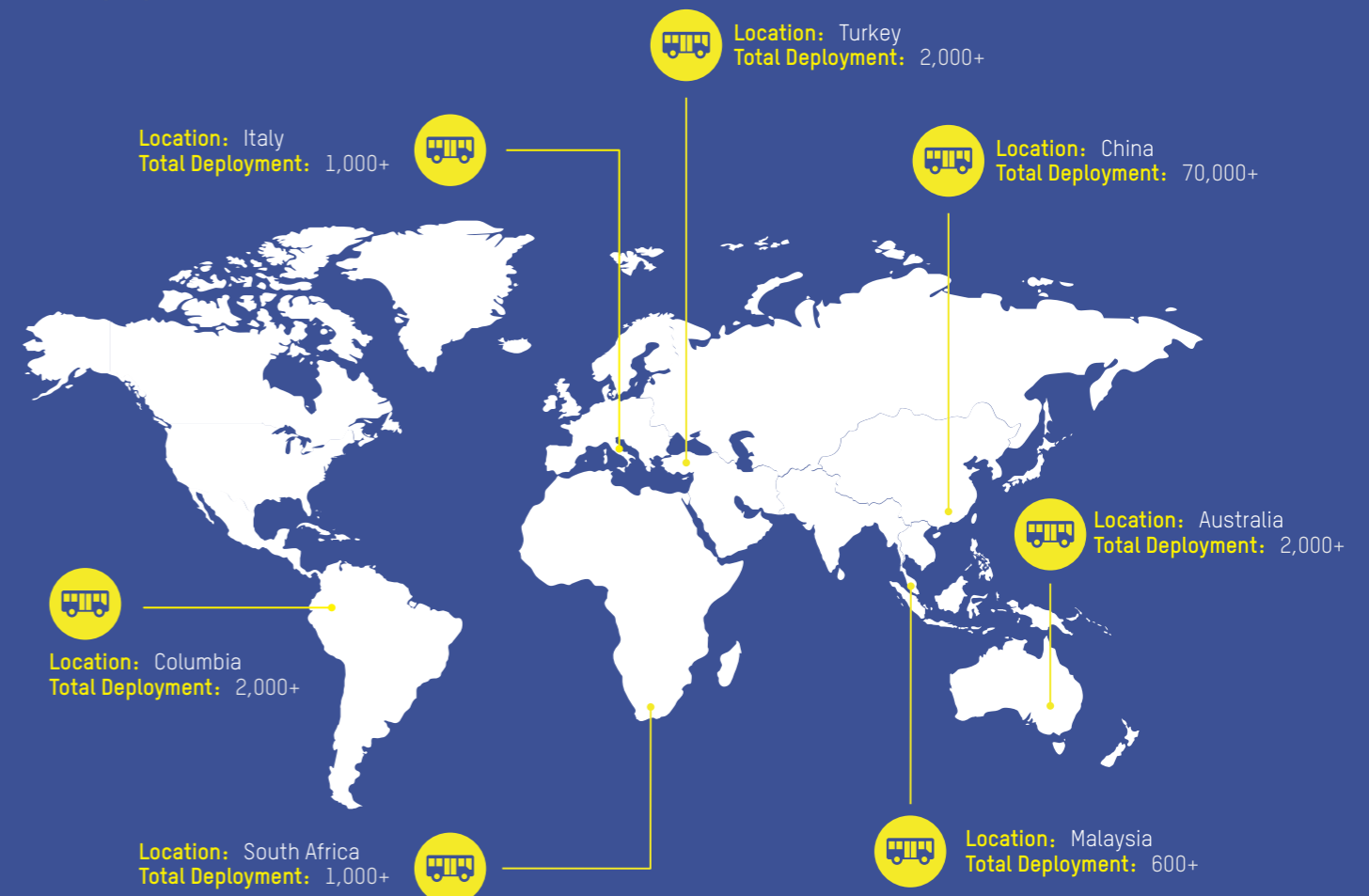


IP66, IP67, IP68



IK10

## Application Scale



# Product Introduction



## 4-Channel MVR

- 4-ch 4MP PoE IPC + 4-ch 6MP IPC via PoE switch
- Pluggable anti-vibration HDD box , 2\*2.5 inch HDD/SSD (2TB for each) ,1 x SD card
- 3G/4G, 5.8G WiFi, GPS, H.265
- Full load consumption ≤ 45 W
- 206 × 219 × 60 mm (8.1 × 8.62 × 2.36 inch)
- 1.6 kg (3.5 lb)
- CE, FCC, EN50155, EN45545, EN50121, E-mark, CB, RoHS, WEEE



## 8-Channel MVR

- 8-ch 8MP PoE IPC+8-ch 6MP IPC via PoE switch
- Pluggable anti-vibration HDD box , 2\*2.5 inch HDD/SSD( 2TB for each) , 1 x SD card
- 3G/4G, 5.8G WiFi, GPS, H.265
- Full load consumption ≤ 99 W
- 202 × 267.6 × 93.9 mm (7.95 × 10.5 × 3.7 inch)
- 3.66 kg (8.07 lb)
- CE, FCC, EN50155, EN45545, EN50121, E-mark, CB, RoHS, WEEE,MIL-STD 810G



DSM Camera

## AE-VC1B1I-ISF

- 720P@25fps
- 6 mm fixed lens
- 2 x 940nm LEDs
- Built in speaker
- 1 TF card, up to 256GB
- Consumption ≤ 7W
- Wide-range Input DC 9- 36V
- 92 x 90 x 106 mm (37.8 x 35.5 x 41.8 inch)



Fireproof Box

## DS-MP1431-64G

- Video mirror backup for data protection
- Fire resistance time:15 min@1100 °C, 20 min@950 °C, 120 min@260 °C
- Waterproof: 24 hour@100 m (10 ATM)
- High Speed Impact:100 Gs@50 ms
- Static Squeeze:100 KN@5 min
- Consumption ≤ 0.5W
- 122 x 88 x 57 mm (4.8 x 3.5 x 2.2 inch)
- Approx.0.97 kg (2.1 lb)



## DS-2XM6122G0

- 2MP resolution,1920 × 1080 @25fps
- 2mm/2.8mm/4mm/6mm fixed lens
- 1 Built-in microphone
- H.265+, IP66, IK08
- 24 VDC, 0.2 A, 5 W or PoE (802.3af, 36 V to 57 V), 0.2 A to 0.1 A, class 3
- Approx. 430 g (0.9 lb.)
- CE, FCC, UL, E-Mark, EN50155, EN45545, EN50121, KC, REACH, RoHS,R118,WEEE,BIS,IK,IP



## DS-2XM6222G0

- 2MP resolution, 1920 × 1080 @25fps
- 2.8mm/4mm/6mm fixed lens
- H.265+,IP67, IK10
- 24 VDC, 0.22 A, max. 5.2 W or PoE (802.3af, 36 V to 57 V), 0.14 A to 0.09 A, max. 5.2 W
- Approx. 330 g (0.7 lb.)
- CE, FCC, UL, E-Mark, EN50155, EN45545, EN50121, KC,RoHS,R118,WEEE,BIS,IK,IP



360° Surround View Monitor Host

## AE-VE242A-A

- Support 4 channels of 720P TVI cameras
- 3D panoramic splice the front, rear, left and right images of the vehicle body
- 4-way HDTVl input, 1-way HDTVl output
- Can Bus interface
- TF card slot x1
- Mini USB interface x1



360° Surround View Camera

## AE-VA133T-A

- Lens (metal shell): 0.9mm fisheye lens
- H (transverse): 190 ° / V (longitudinal): 116 °
- Sensor type: 1 / 4 "1.3 Mega CMOS
- Minimum illumination: 0.1 lux @ (f1.2, AGC on)
- Protection grade: IP68
- Interface: 4-core BMW head interface



## DS-2XM67 Series

- 2MP resolution,1920 × 1080 @25fps
- 5MP resolution,3072 × 1728 @ 20fps
- 2mm/2.8mm/4mm/6mm/8mm fixed lens
- 1 Built-in microphone
- H.265+, IP67, IK10
- 24 VDC, 0.3 A, max. 7.5 W or PoE (802.3af, 36V to 57V), 0.30 A to 0.20 A, max: 7.5W
- Approx. 460 g (1 lb.)
- CE, FCC, UL, E-Mark, EN50155, EN45545, EN50121, KC, REACH, RoHS,R118,WEEE,BIS,IK,IP



## DS-2XM6522G0

- 2MP resolution, 1920 × 1080 @25fps
- 2.8mm/4mm/6mm fixed lens
- 3-Axis adjustment
- H.265+, IP69K, IK10+
- 24 VDC, 0.36 A, max. 8.6 W or PoE (802.3af, 36 V to 57 V), 0.25 A to 0.15 A, max. 8.8 W
- Approx. 850 g (1.9 lb.)
- CE, FCC, UL, E-Mark, EN50155, EN45545, EN50121, KC,RoHS,R118,WEEE,BIS,IK,IP



## DS-2XM6825G0/C

- Dual lens, 1920 × 1200 @ 25fps
- 2 mm fixed lens
- 1 Built-in microphone
- Flash memory storing people counting data
- H.265+, IP66, IK08
- 24 VDC, 0.31 A, max. 7.4 W or PoE (802.3 af, 36 to 57 VDC), 0.22 A to 0.13 A, max. 7.8 W
- Approx. 640 g (1.4 lb.)
- CE, FCC, UL, E-Mark, EN50155, EN45545, EN50121, KC,RoHS,R118,BIS,IK,IP



## DS-2XM63 Series

- 6MP,3072 × 2048 @ 25fps,1.27 mm fixed lens
- 12MP, 4000 × 3000@20fps, 2 mm fixed lens
- 2 Built-in microphones
- H.265+, IP66, IK10
- 24 VDC, 0.40 A, max. 12 W or PoE( 802.3af, 36 to 57 VDC), 0.34 A to 0.22 A, max. 12 W
- Approx. 600 g (1.32 lb.)
- CE, FCC, UL, E-Mark, EN50155, EN45545, EN50121, KC,RoHS,R118,BIS,IK,IP

**Hikvision Australia**  
T +61-2-8599-4233  
salesau@hikvision.com

**Hikvision Azerbaijan**  
T +994 50 369 81 57  
Azerbaijan.CATC@hikvision.com

**Hikvision Brazil**  
T +55-11-3318-0050  
Latam.support@hikvision.com

**Hikvision Canada**  
T +1-866-200-6690  
sales.canada@hikvision.com

**Hikvision Colombia**  
sales.colombia@hikvision.com

**Hikvision Czech**  
T +420 29 6182640  
info.cz@hikvision.com

**Hikvision Egypt**  
T +20223066117  
sales.eg@hikvision.com

**Hikvision Europe**  
T +31 23 5542770  
sales.eu@hikvision.com

**Hikvision France**  
T +33(0)1 85 330 450  
info.fr@hikvision.com

**Hikvision Germany**  
sales.dach@hikvision.com

**Hikvision Hong Kong , China**  
sales.hk@hikvision.com

**Hikvision Hungary KFT**  
info.hu@hikvision.com

**Hikvision India**  
T +91-22-6855 9944  
sales@pramahikvision.com

**Hikvision Indonesia**  
T +6221 2933 9366  
Sales.Indonesia@hikvision.com

**Hikvision Israel**  
T +972 79 5555590  
sales.israel@hikvision.com

**Hikvision Italy**  
T +39 0438 6902  
info.it@hikvision.com

**Hikvision Kazakhstan**  
T +7 (727) 291-75-88  
support@hikvision.kz

**Hikvision Kenya**  
wangchengbin@hikvision.com

**Hikvision Korea**  
T +82-1661-8138  
sales.korea@hikvision.com

**Hikvision Malaysia**  
T +60327224000  
sales.my@hikvision.com

**Hikvision Mexico**  
T +52 55 2624 0110  
sales.mexico@hikvision.com

**Hikvision New Zealand**  
T 09 217 3127  
salesnz@hikvision.com

**Hikvision New Panama**  
Sales.centralamerica@hikvision.com

**Hikvision Pakistan**  
T +92-2135147526  
support.pk@hikvision.com

**Hikvision Philippines**  
support.ph@hikvision.com

**Hikvision Poland**  
T +48 22 460 01 50  
info.pl@hikvision.com

**Hikvision Russia**  
T +7-495-669-67-99  
saleru@hikvision.com

**Hikvision Romania**  
marketing.ro@hikvision.com

**Hikvision Singapore**  
T +65 6684 4718  
sg@hikvision.com

**Hikvision South Africa**  
T +27 877018113  
sale.africa@hikvision.com

**Hikvision Spain**  
T +34 91 737 16 55  
info.es@hikvision.com

**Hikvision Tashkent**  
T +99-87-1238-9438  
uzb@hikvision.ru

**Hikvision Thailand**  
sales.thailand@hikvision.com

**Hikvision Turkey**  
T +90 216 521 70 70  
support.tr@hikvision.com

**Hikvision UAE**  
T +971-4-4432090  
salesme@hikvision.com

**Hikvision UK & Ireland**  
T +44(0)1628 902 140  
info.uk@hikvision.com

**Hikvision Uzbekistan**  
T +998-71-233-55-50  
uzbekistan@hikvision.com

**Hikvision USA**  
T +1-909-895-0400  
sales.usa@hikvision.com

**Hikvision Vietnam**  
T +84 24 7300 7586  
sale.vn@hikvision.com