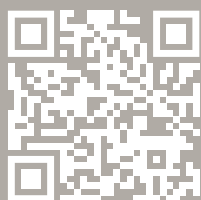




the
zenith
surfaces
collection



www.stoneambassador.com.au



Vitrified Compact Surfaces

Forward thinking, envrionmentally conscious design

Zenith Surfaces emerges as a paradigm shift in surface materials, leveraging a ground-breaking Vitrified Compact Surface (VCS) technology. An advanced manufacturing process helping Zenith Surfaces transcend conventional limitations, boasting exceptional strength, durability, scratch resistance, and heat resistance.

Containing up to 89% recycled materials

Using a unique recycled glass make-up and featuring up to 89% recycled materials, Zenith Surfaces is transforming design with a purpose. Helping to minimise environmental impact and promoting resource conservation at the same time.

Offering exceptional performance and strength

Zenith Surfaces exhibits excellent compressive and flexural strength, exceeding granite and marble benchmarks. Its resistance to scratches and stains simplifies maintenance, while its impressive thermal resistance renders it highly resistant to everyday kitchen heat.



Spill Resistant

Thanks to high spill resistance technology, cleaning up those small marks and stubborn spots is a breeze with Zenith Surfaces.



Stain Resistant

A near care-free surface that doesn't require any sealing or ongoing treatments making it ideal for any internal application.



Environmentally Friendly

With recycled ingredients and a sustainable design ethos, Zenith Surfaces truly is a decorative material with purpose.



Heat Resistant

High heat resistance mean Zenith Surfaces is ideal for internal applications like benchtops, splashbacks and higher heat areas.



Scratch Resistant

Unlike its natural counterparts, Zenith Surfaces contains impressive scratch resistant properties, perfect for whatever life can throw at it.



10 Year Warranty

Covered by our ten year warranty, you can rest assured that your Zenith Surfaces product will remain beautiful for many years to come.

Up to 89%
Recycled
Materials



10 Year
Warranty
Included



0%
Crystalline
Silica







Graphene

3200mm X 1600mm x 20mm

Premium



Signature

Bescato Bianco

3200mm X 1600mm x 20mm



Allure Blue

3200mm X 1600mm x 20mm



Deluxe

Mink Grey

3200mm X 1600mm x 20mm



Deluxe

Carbon Noir

3200mm X 1600mm x 20mm



Graphene

3200mm X 1600mm x 20mm

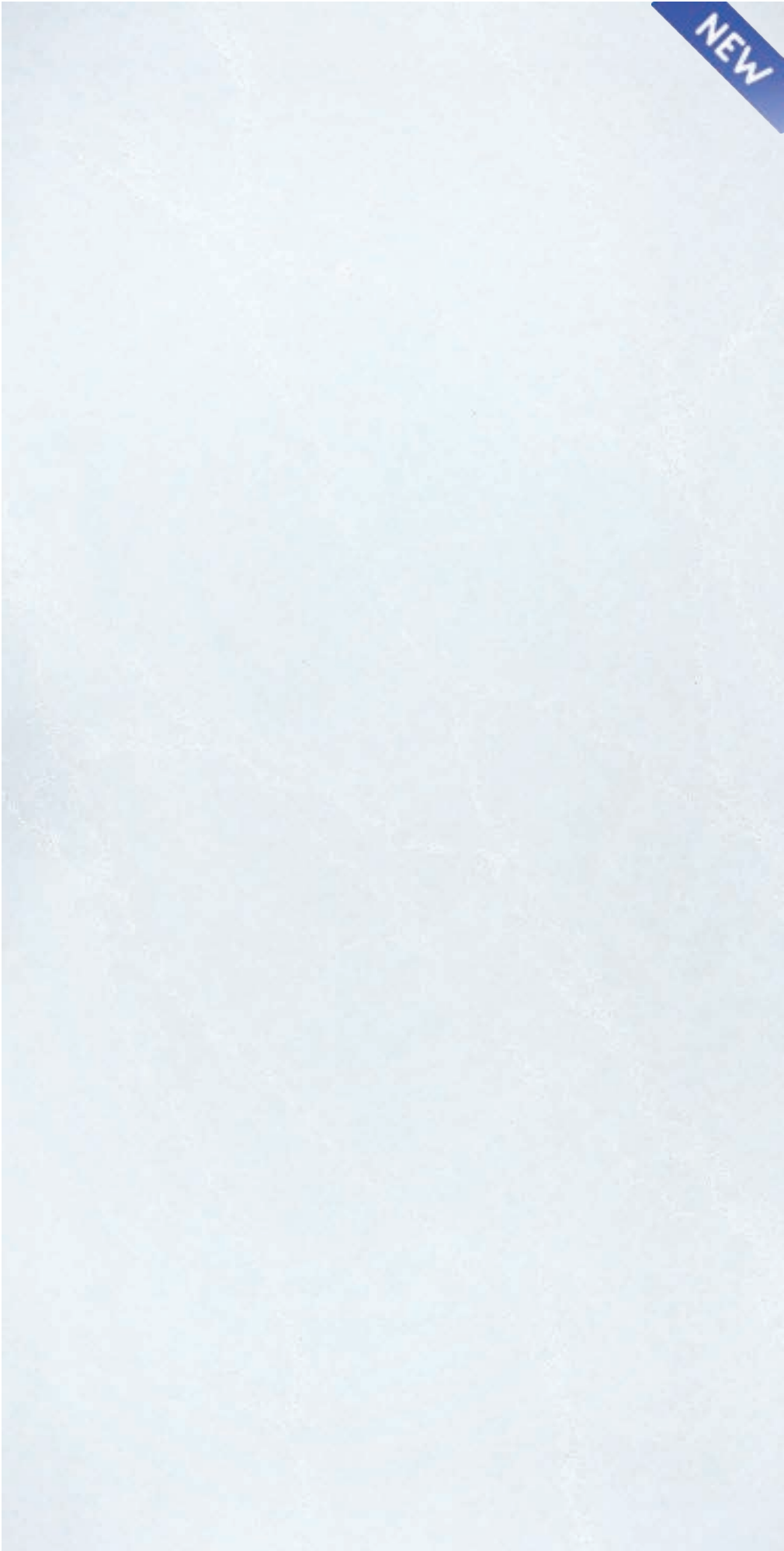
Premium



Marrakesh

3200mm X 1600mm x 20mm

Premium



Vanilla Sky

3200mm X 1600mm x 20mm

Prestige



Allure Blue

3200mm X 1600mm x 20mm

Prestige



Whisper White

3200mm X 1600mm x 20mm

Prestige



Greylac

3200mm X 1600mm x 20mm

Prestige



NEW

Signature

Bescato Bianco

3200mm X 1600mm x 20mm



NEW

Signature

Perla Venata

3200mm X 1600mm x 20mm



Perla Venata

3200mm X 1600mm x 20mm

Slab Specifications

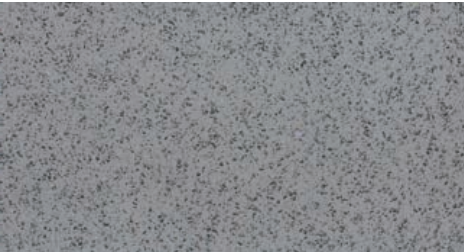
Slab Thickness: 20mm | Slab Dimension: 3200mm x 1600mm



Sugar Rush Essential



Dapple White Essential



Mottle Grey Essential



White Burst Essential



Pearl White Deluxe



Carbon Noir Deluxe

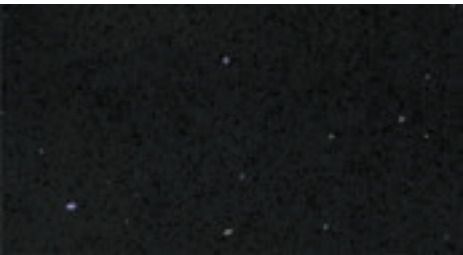
Slab Finishes

(All slabs polished unless stated otherwise.)

M: Matte | T: Textured | PM: Pattern Match



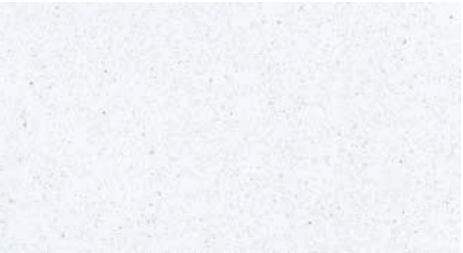
Sparkling White Essential



Platinum Black Essential



Savannah Essential



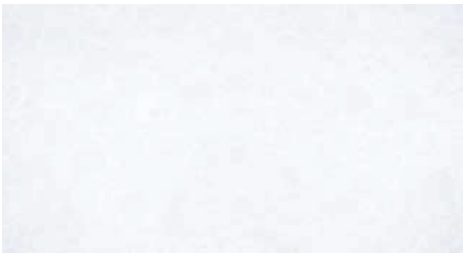
Crystal Essential



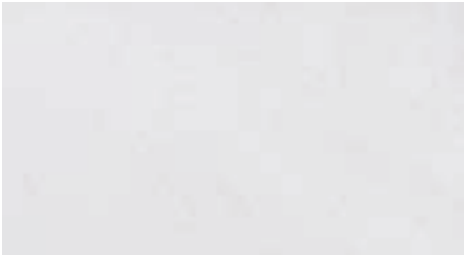
Mink Grey Deluxe



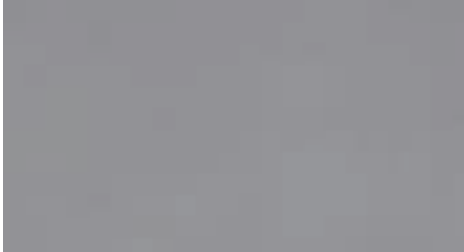
Fossil Deluxe



White Truffle Deluxe



Terazio Deluxe



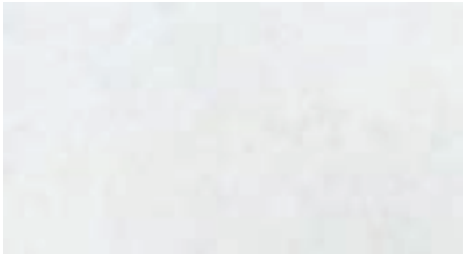
Beton M Deluxe



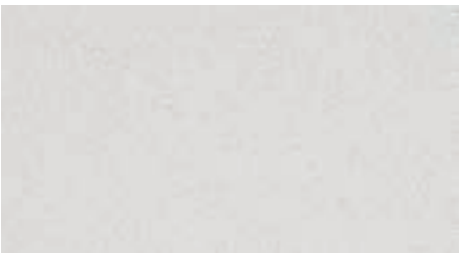
Lagos Grey Premium



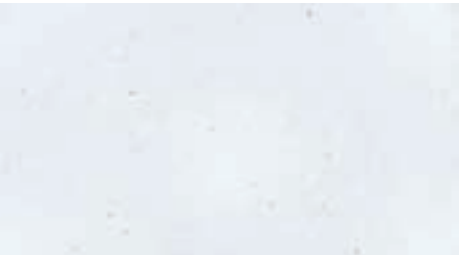
Graphene Premium



Firtina T Premium



Mero Deluxe



Kirec M Deluxe



Carrara Mist Premium



Casablanca Premium



Marrakesh Premium



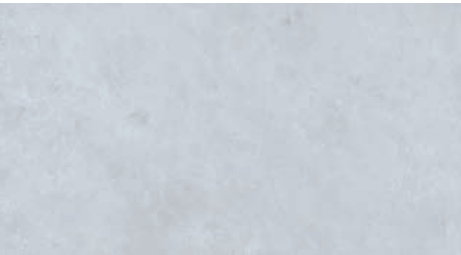
Valour T Premium

Slab Specifications

Slab Thickness: 20mm | Slab Dimension: 3200mm x 1600mm

Slab Finishes (All slabs polished unless stated otherwise.)

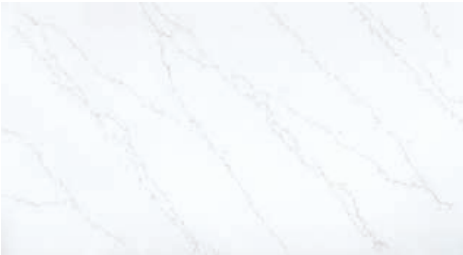
M: Matte | T: Textured | PM: Pattern Match



Element Grey T Premium



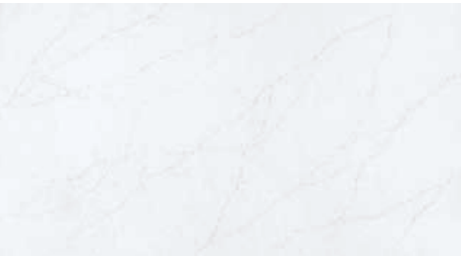
Calacatta Signature Prestige



Bluetta Signature



Gracious Grey Signature



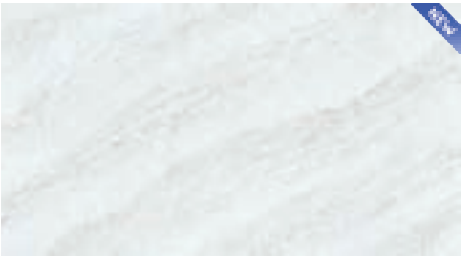
Marbella Prestige



Raiden Prestige



Bescato Bianco Signature



Perla Venata Signature



Vanilla Sky Prestige



Whisper White Prestige



Allure Blue Prestige



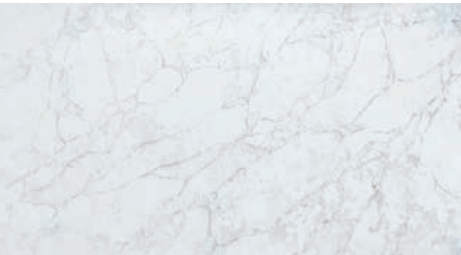
Greylac Prestige



Enchanted White T Prestige



Ottoman Grey Signature



Elysian White Signature



Zayan PM Signature



Marrakesh Premium

Marrakesh
3200mm X 1600mm x 20mm



Vanilla Sky
3200mm X 1600mm x 20mm


Prestige




Greylac
3200mm X 1600mm x 20mm

Luxury Surface Architecture


Helping Aussies create the space they have always wanted since 2012.




Easy Clean Surfaces




Durable Designs




Heat Resistance




Spill Resistance




Scratch Resistance



Australian Owned



Jumbo Sizing



Recycled Materials

Hard Wearing, Durable Designs

All of our surfaces are designed to be durable and suitable for a range of internal applications such as kitchens, bathrooms splashbacks and covered alfresco dining areas for you peace of mind.

Easy Clean Surfaces

Zenith Surfaces designs are made for easy cleaning with nothing more than warm soapy water and a simple microfiber cloth. For those more stubborn marks, try our dedicated cleaning solutions.

Thousands of Happy Homes

Stone Ambassador products have made their way into tens of thousands of homes all over Australia and we invite you to be the next happiness story. Our friendly staff are experts in all things surfaces and can't wait to help bring your project dreams to life.


The Zenith Surfaces Collection

Beautiful and sustainable surfaces for any space you can imagine


Essential	Deluxe	Premium	Prestige	Signature
Sugar Rush	Pearl White	Carrara Mist	Calacatta Signature	Ottoman Grey
Sparkling White	Mink Grey (New)	Lagos Grey	Marbella	Elysian White
Dapple White	Carbon Noir (New)	Casablanca	Raiden	Zayan
Platinum Black	Fossil	Graphene (New)	Vanilla Sky (New)	Bluetta
Mottle Grey	White Truffle	Marrakesh (New)	Whisper White (New)	Gracious Grey
Savannah	Mero	Firtina (T)	Allure Blue (New)	Bescato Bianco (New)
White Burst	Terazio	Valour (T)	Greylac (New)	Perla Venata (New)
Crystal	Kirec (M)	Element Grey (T)	Enchanted White (T)	
	Beton (M)			

Popular Edge Profile Styles

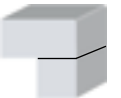
Ask our helpful team about your ideal edge profile type



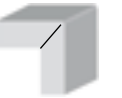
20mm Arris



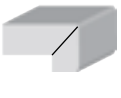
20mm Pencil Round



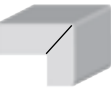
20mm stone with mitred edge (arris). Butt joint slab end panel



20mm stone (arris). Mitre joint slab end panel



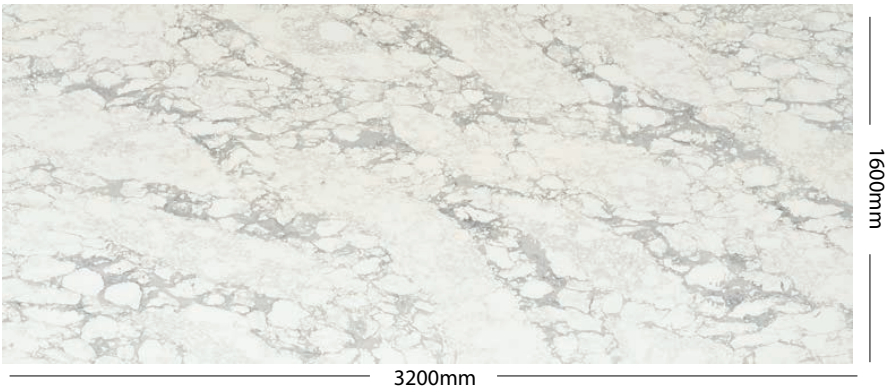
20 mm stone with 40mm mitred edge (arris)



20 mm stone with 60mm mitred edge (arris)

Zenith Surfaces Slab Sizing

Jumbo slab sizing to maximise your material usage



For more information, refer to the Stone Ambassador website - www.stoneambassador.com.au



10 Year Peace of Mind Warranty

Unlike natural marble, Zenith Surfaces does not require sealing or regular maintenance, making it a practical, durable and affordable solution for your home or project. Zenith Surfaces is not indestructible, but it is tough - with high durability against heat, scratching, chips and stains all Zenith Surfaces products come with our 10 year peace of mind warranty.

Care & Maintenance

Receiving your complimentary cleaning and care kit

Zenith Surfaces requires minimal maintenance to keep your surface looking as good as new. When you register your Zenith Surfaces product within 30 days, you will receive your complimentary cleaning and care kit. Using the contents contained within on a regular basis will help ensure the long lasting life of your Zenith Surfaces product.

How to care for your benchtop

Everyday polished and matte benchtop cleaning requires no more than soapy water and a clean microfiber cloth.

To manage those stubborn marks or spills on polished benchtops, do the following:


- With the contents of your care and maintenance box, wet and wash your microfiber cloth, ensuring it is clean and free of any debris.
- Place a small, twenty cent piece size drop of cream cleanser on your benchtop and wipe in small circular motions with your microfiber cloth and create a lather.
- Avoid heavy rubbing in the same area to prevent any etch or scuff marks appearing.
- Once the area is clean, wipe excess cleanser away with a wet and clean microfiber cloth or paper towel.

Cleaning your Zenith Surfaces matte or textured surfaces


- Clean using a non-scratch scouring pad and your inclued cream cleanser
- Wipe in a circular motion, avoiding any excess pressure.
- Wipe dry with a clean microfiber cloth.

General tips for using your Zenith Surfaces benchtops


- Always use a chopping board when chopping food to avoid any unwanted scratches.
- If your pots and pans are too hot to touch, they are too hot for your benchtop. Always use heat trivets or chopping boards to place any hot items directly on your benchtop surface.




Clean & damp Microfiber cloth




Wet the area to be cleaned




Apply 20c size drop of cleanser



Wipe in gentle circular motions



Wipe away any excess cleanser



Cleaning Video

Visit Your Local Stone Ambassador Showroom

We can help guide you to creating a space you will love for a lifetime



Victoria North (Head Office)
31 Burnett Street, Somerton, 3062
(03) 9333 8835

Victoria South
70-72 Nissan Drive, Dandenong South, 3175
(03) 9333 8834

Queensland
35 Telford Circuit, Yatala, 4207
(07) 3462 8500

South Australia
101 South Terrace, Wingfield, 5013
(08) 8423 0150

Western Australia
24 Creative Street, Wangara, 6065
(08) 6383 6558