



ALIAA M. DESIGN STUDIO

PORTFOLIO

INNOVATION . LUXURY . SERENITY

Aliaa M.



a journey towards
a



lifetime of memories

CONTENTS

interior



CONTENTS

interior

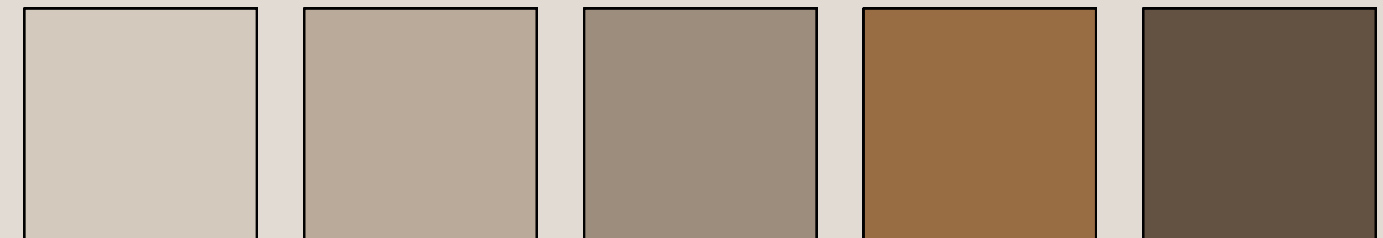
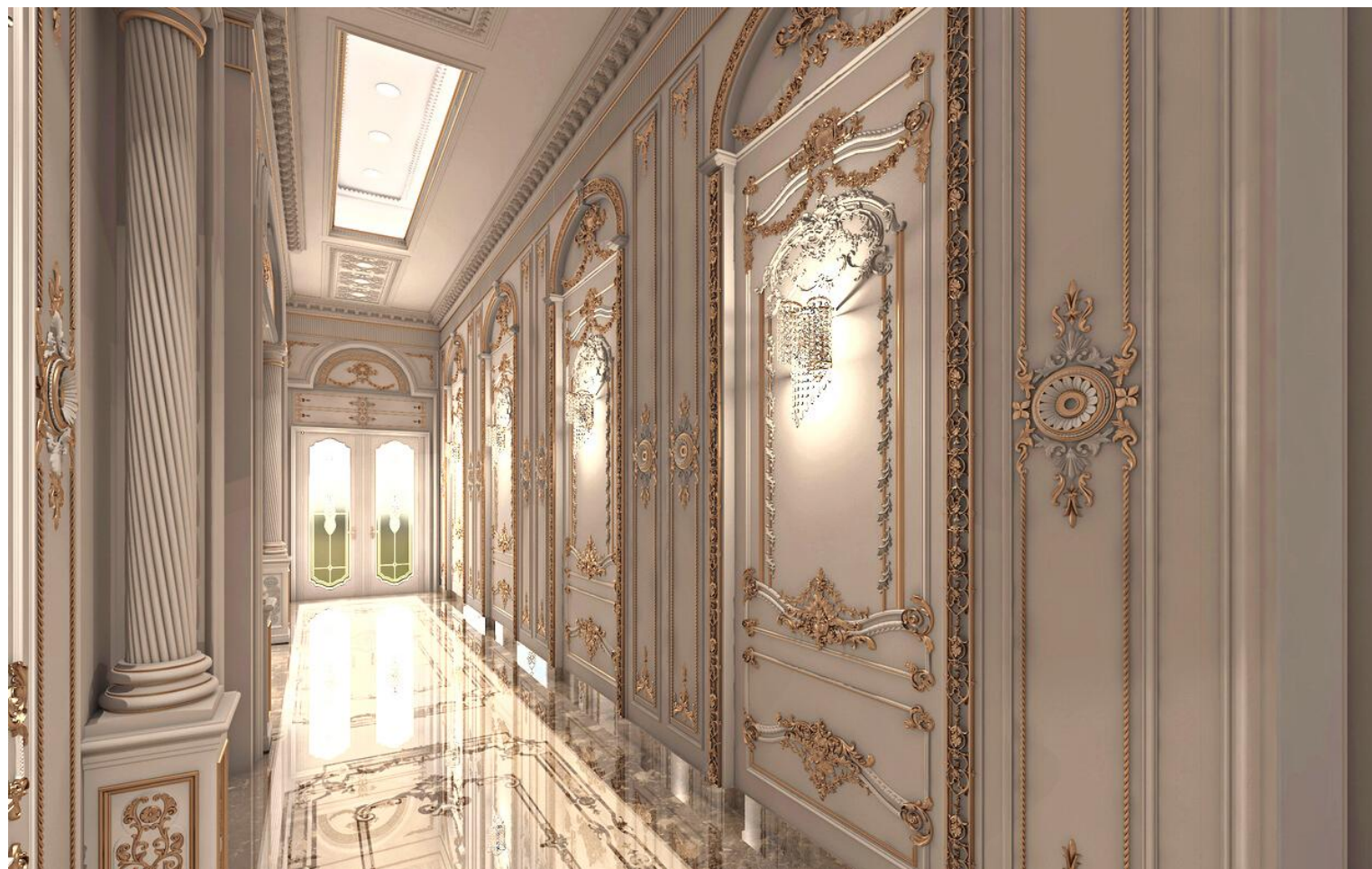






ENTRANCE HALL

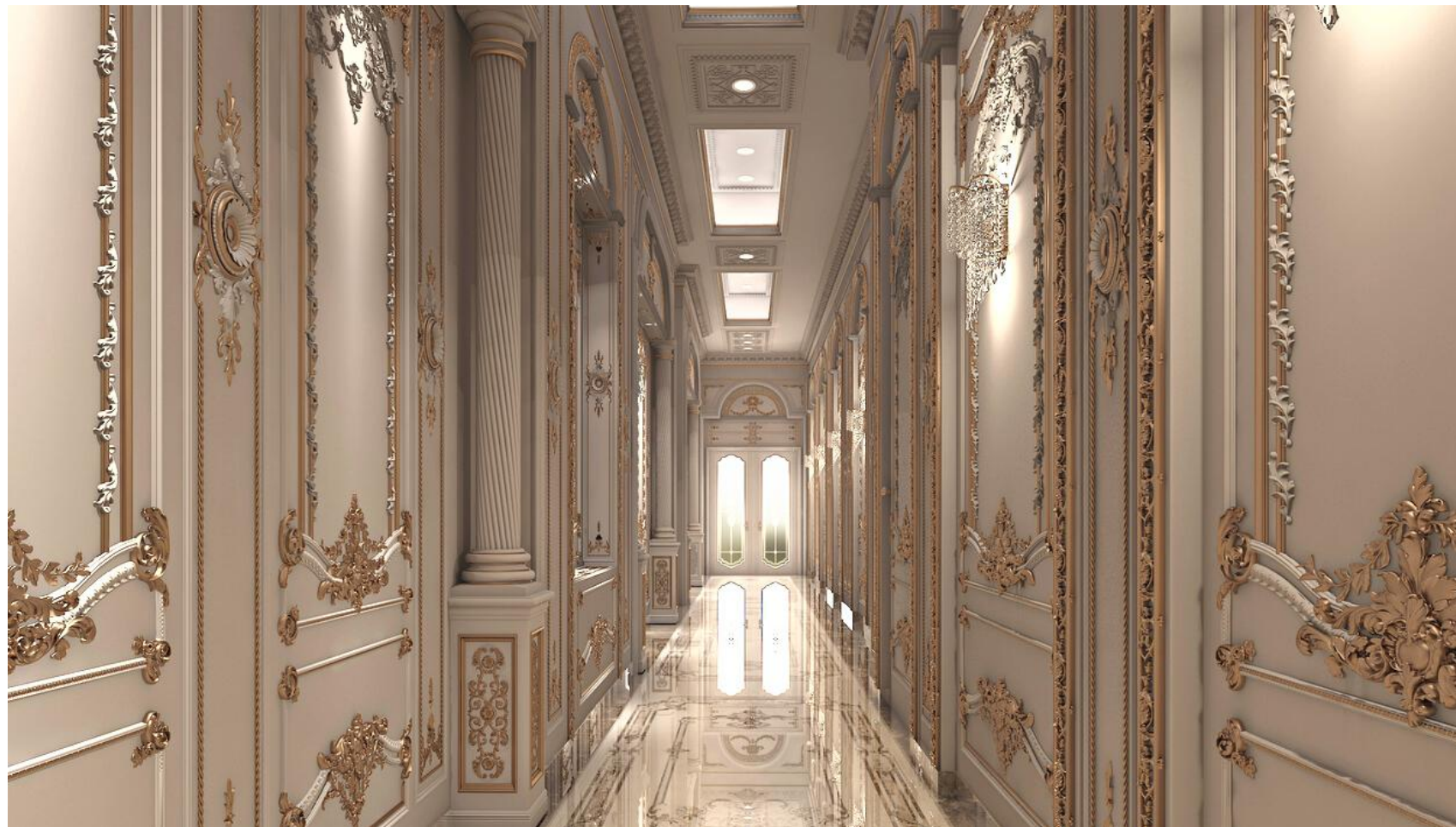
A classical entrance hall in off-white paint, accented with gold, and reflected in the hand designed marble floor. This hall is a lobby dividing the space into rooms and acting as a passage to each space. The corridors leading up to the back door is also designed to match the aesthetic of the space.



This space is designed with a monochromatic color pallet used to compliment the complexity of the design, help accentuate the details and makes them vivid.

MATERIALS

To create this divine classical entrance hall, we used gypsum to create all the details and ornaments, different shades of paint to reach the colors we require and gypsum board to create the levelling of the ceiling. lastly, a waterjet marble floor to reflect all the details and give an exquisite finish to the entire space.



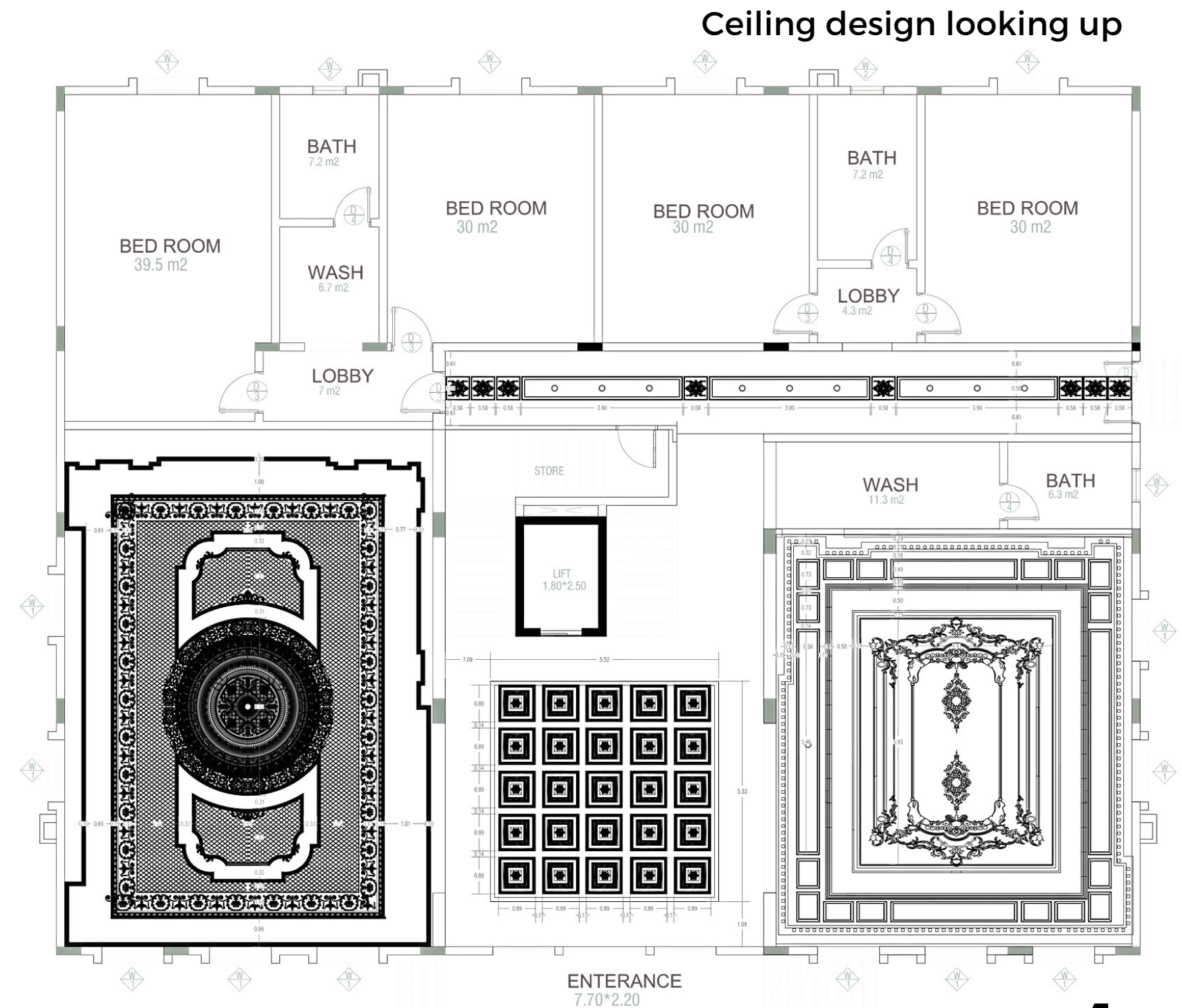
SHOP-DRAWING

we create shop-drawings to help bring your designs to life.

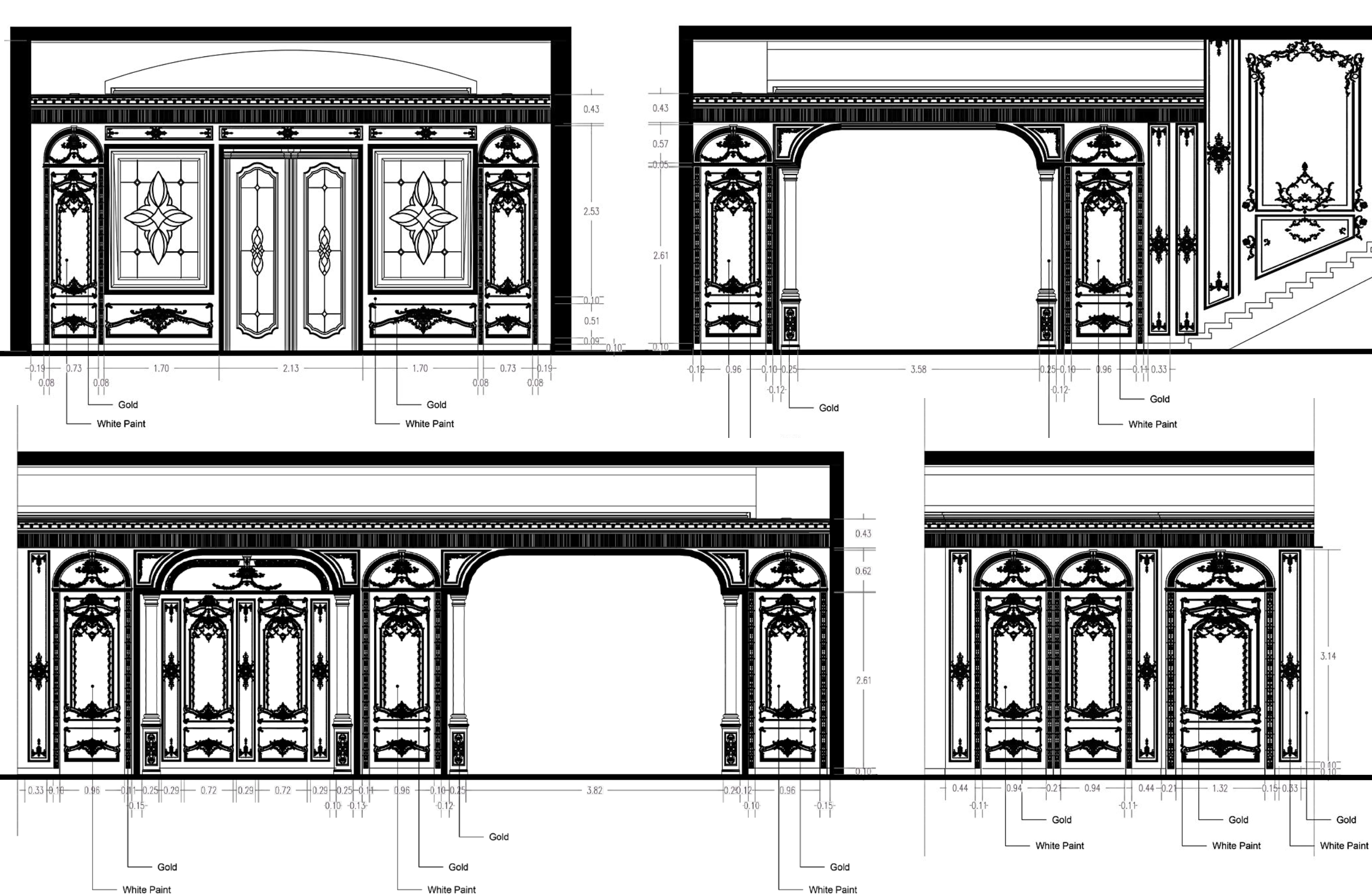
we provide drawings for each space both dimensional and electrical, in details. Here is a list of a sample of the drawings we provide:

- Area plan
- Room dimension plan
- Furniture plan
- Floor design plan
- Carpet plan
- Looking up and curtain box plan
- Gypsum wall plan
- Electrical plan
- Design sections
- electrical sections

This is a sample of the drawings we create, detailed to meet your needs, and help you get each and every space designed, implemented accurately. Firstly, a Ceiling design looking up.



DESIGN SECTIONS



Secondly, design sections in four different directions of the main hall showing the details of the walls, the gypsum, the glass doors and even the corniches all in details as per the design. The materials, colors and dimensions are also stated as guidance during implementation, all to produce an outcome that is the realistic version of the design.



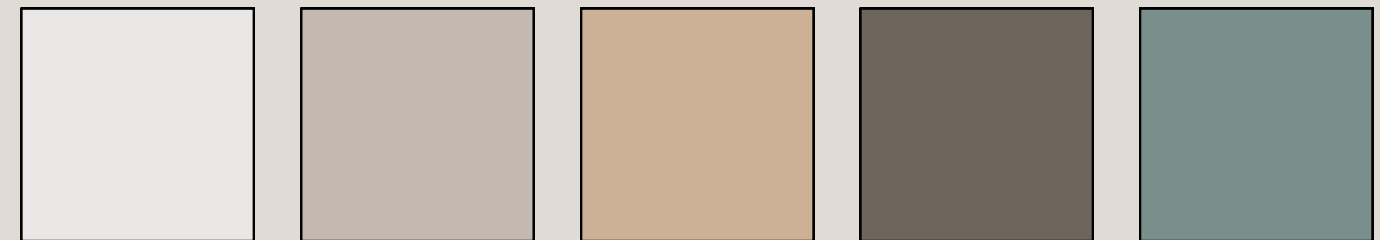
Thirdly, design sections in two different directions showing the details of the corridor walls, the gypsum design, and even the corniches of the ceiling all in details as per the design. The materials used and the different colors in the space are also shown to guide any implementer. We provide detailed drawings to create accurate outcomes.





LADIES MAJLIS

A neo-classical majlis surrounded with paint and wooden boards, accented with mirrors and champagne color details. The furniture is a combination between both classical and neo-classical design styles with two shades of the same tone, complimented with a shade of light blue. The classical carpet brings together the entire design and comes in coherence with the colors, styles and aesthetic.



We designed this majlis with a split complementary color scheme used to enhance the sophistication of the space, making it ever more elegant.

MATERIALS

The space is designed using wooden boards, paint and book-match porcelain slabs. The floor is the matching opposite color of the book-match wall slabs and the space is accented with champagne color metal. A complementing light blue color is used in accessories.



SHOP-DRAWING

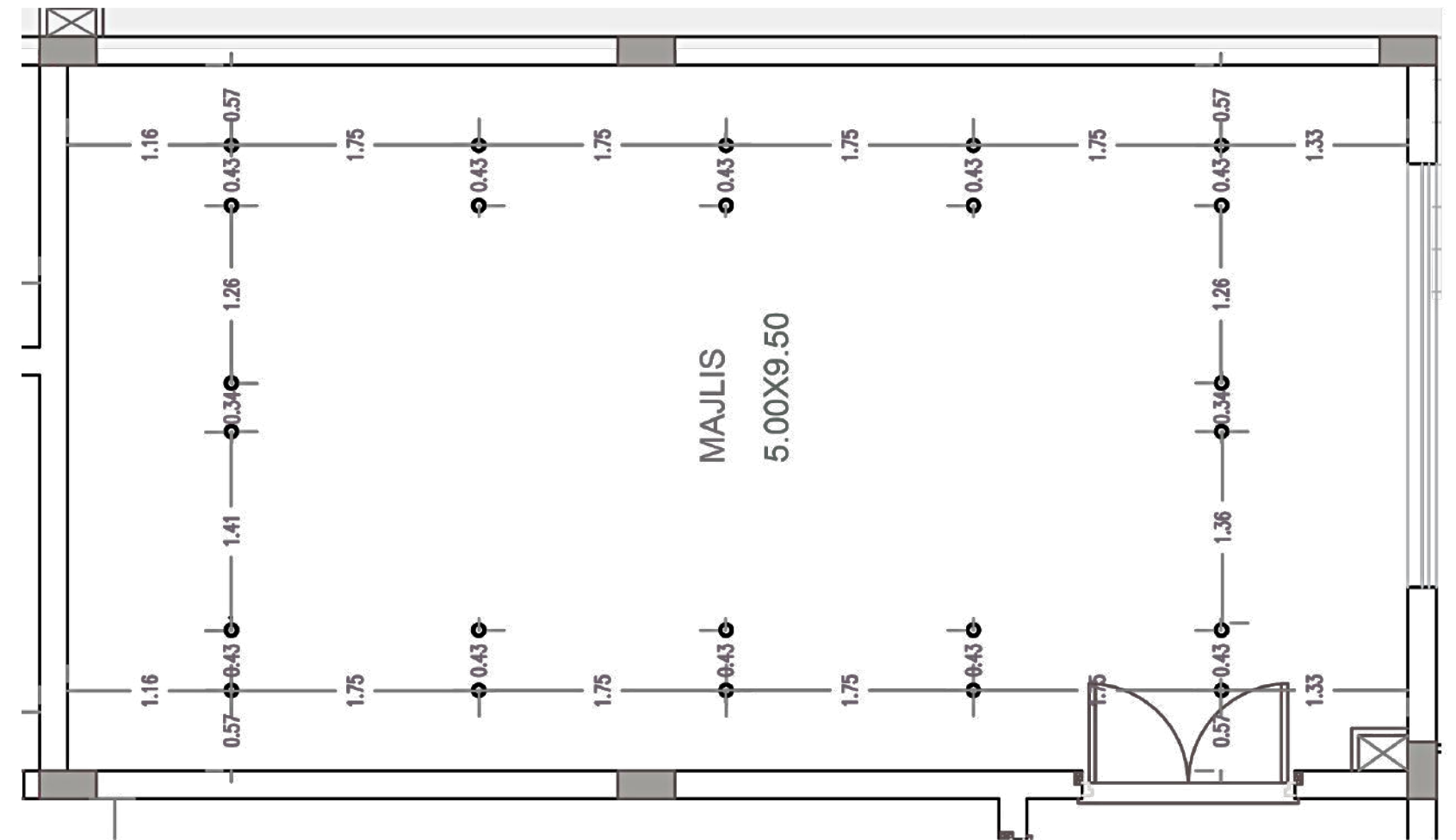
we create shop-drawings to help bring your designs to life.

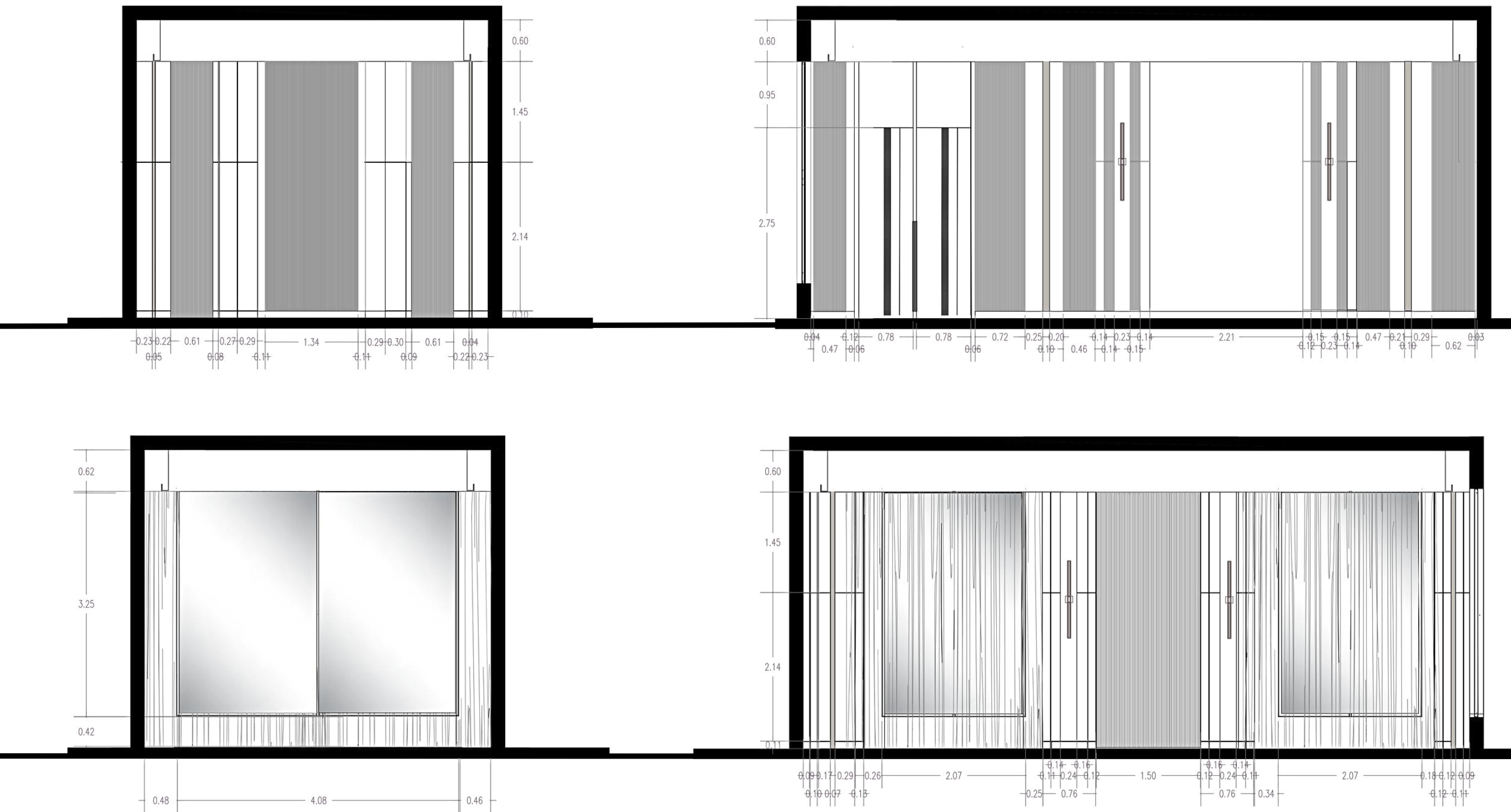
we provide drawings for each space both dimensional and electrical, in details. Here is a list of a sample of the drawings we provide:

- Area plan
- Room dimension plan
- Furniture plan
- Floor design plan
- Carpet plan
- Looking up and curtain box plan
- Gypsum wall plan
- Electrical plan
- Design sections
- electrical sections

This is a sample of the drawings we create, detailed to meet your needs, and help you get each and every space designed, implemented accurately. Firstly, ceiling electrical looking up.

Ceiling electrical looking up





Secondly, design sections in four different directions of the women majlis showing the details of the walls, with all of its material details as per the design. The curtain placement is also indicated to further detail the shop-drawing of the space. This is all to produce the desired outcome as accurately as possible.

VIDEO

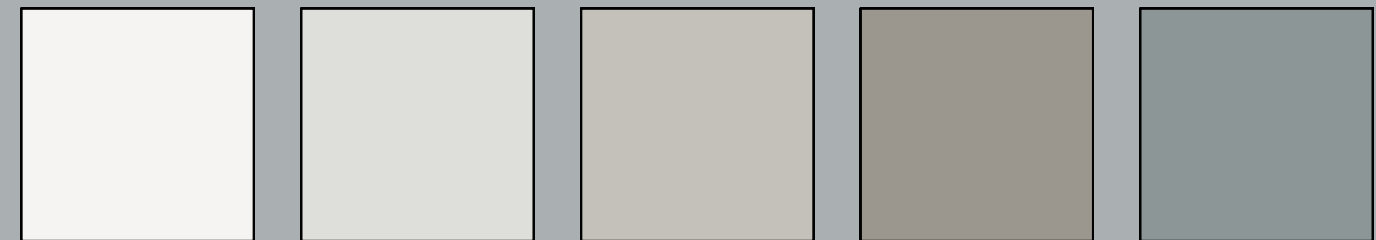
Lastly, a rendered video mimicking what the space would look like in reality, while giving you a tour in it.





KITCHEN AND BREAKFAST CORNER

This room is designed in country style. Paint and gypsum creates the arches and the serene wall color. The parquet floor and the white furniture mimicking the walls are what creates a homey feel to the space.



For this space we used a split complementary color scheme bring out the country style and create a space that looked as comfortable as it felt.

MATERIALS

Gypsum is used to create the arches surrounding the windows and shelves. Light blue paint is used to make the space cozy and a little more country. The parquet floor compliments the blue and makes it feel a tad like old homes. With a final touch of marble tops to reflect the beauty of the space. Yellow and blue accessories brighten up the place and makes it homey.



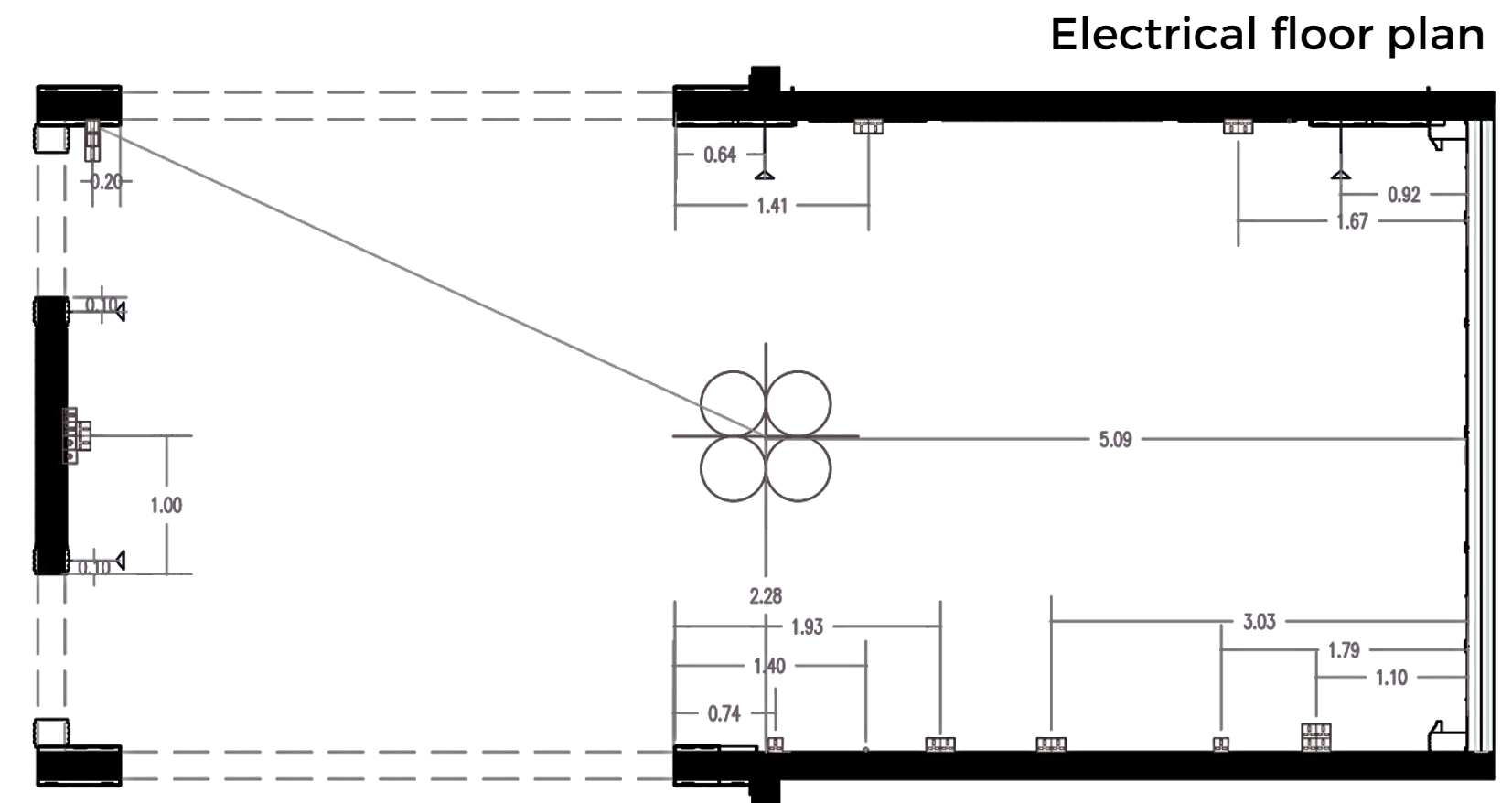
SHOP-DRAWING

we create shop-drawings to help bring your designs to life.

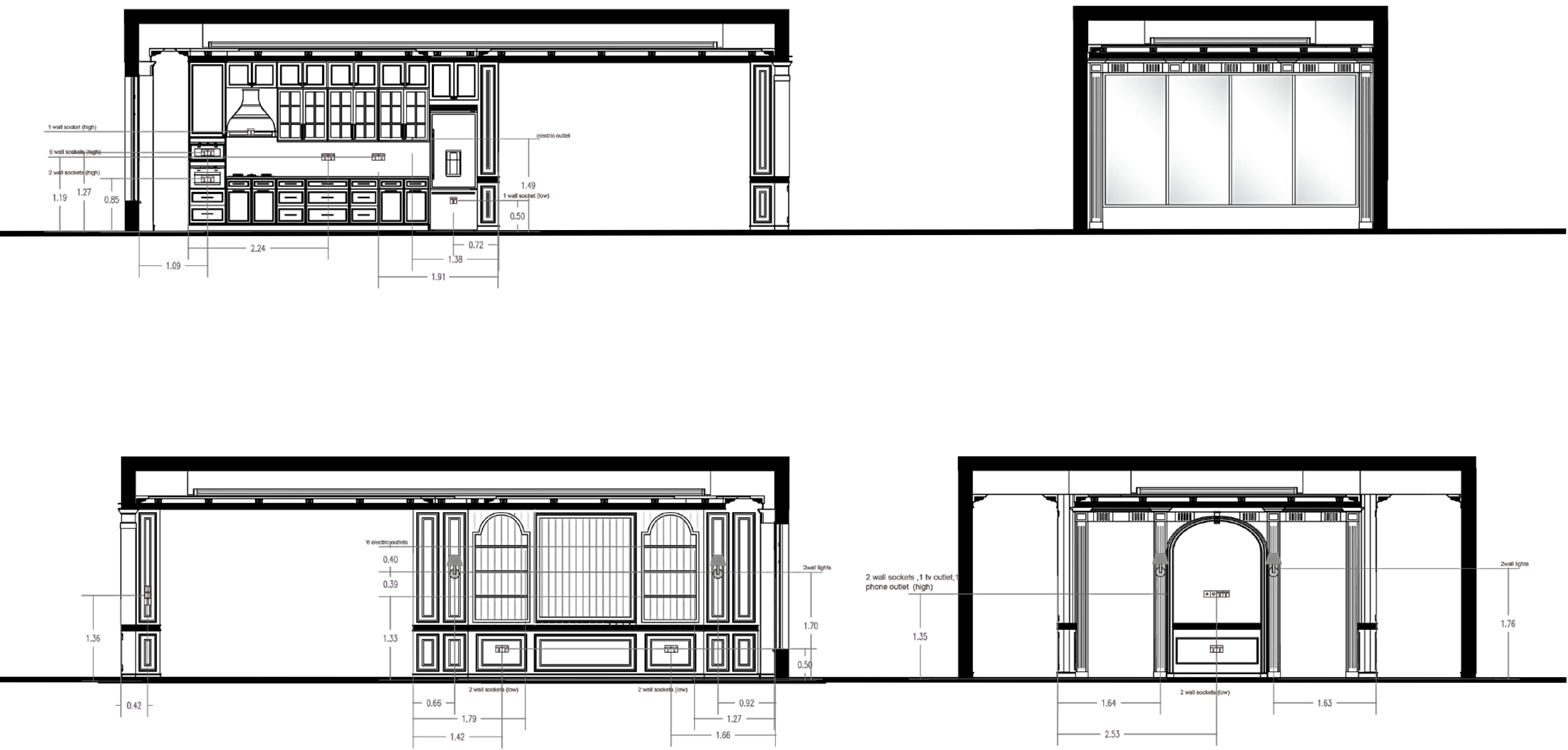
we provide drawings for each space both dimensional and electrical, in details. Here is a list of a sample of the drawings we provide:

- Area plan
- Room dimension plan
- Furniture plan
- Floor design plan
- Carpet plan
- Looking up and curtain box plan
- Gypsum wall plan
- Electrical plan
- Design sections
- electrical sections

This is a sample of the drawings we create, detailed to meet your needs, and help you get each and every space designed, implemented accurately. Firstly, a electrical floor plan.



DESIGN SECTIONS



Secondly, electrical sections in four different directions of the kitchen and breakfast corner showing the details of the wall lights, the LED strips the electrical appliances, sockets, switches and electrical outlets. The specifications of these items is also stated to help achieve the desired outcome.

VIDEO

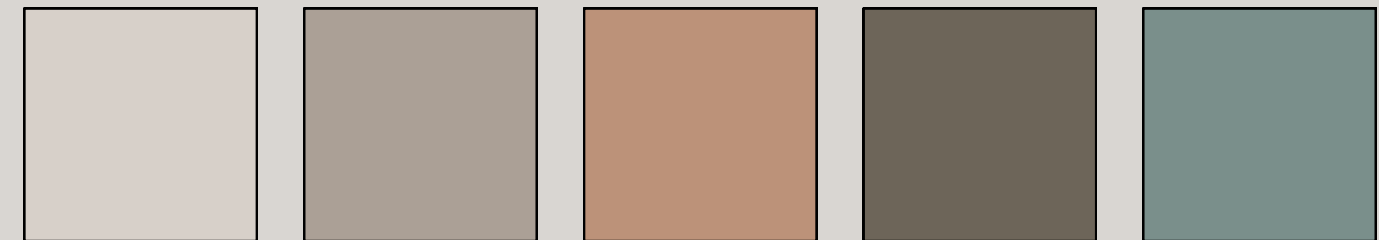
Lastly, a rendered video mimicking what the space would look like in reality, while giving you a tour in it.





MASTER SUITE

a modern design room in beautiful tone of light beige color. The walls articulated with panels and the floor in a beige and off-white marble to reflect and compliment the room. The furniture lined and decorated with champagne gold and rose-gold to accentuate the pieces.



This room is designed in a diluted complementary color scheme to help emphasize the details without it looking over bearing.

MATERIALS:

a marble slab on the wall, a textured velvet headboard , gold and rose-gold partitions and accessories. several marble pieces on the walls and a marble floor all reflecting the beauty of the design and creating more light in the room.



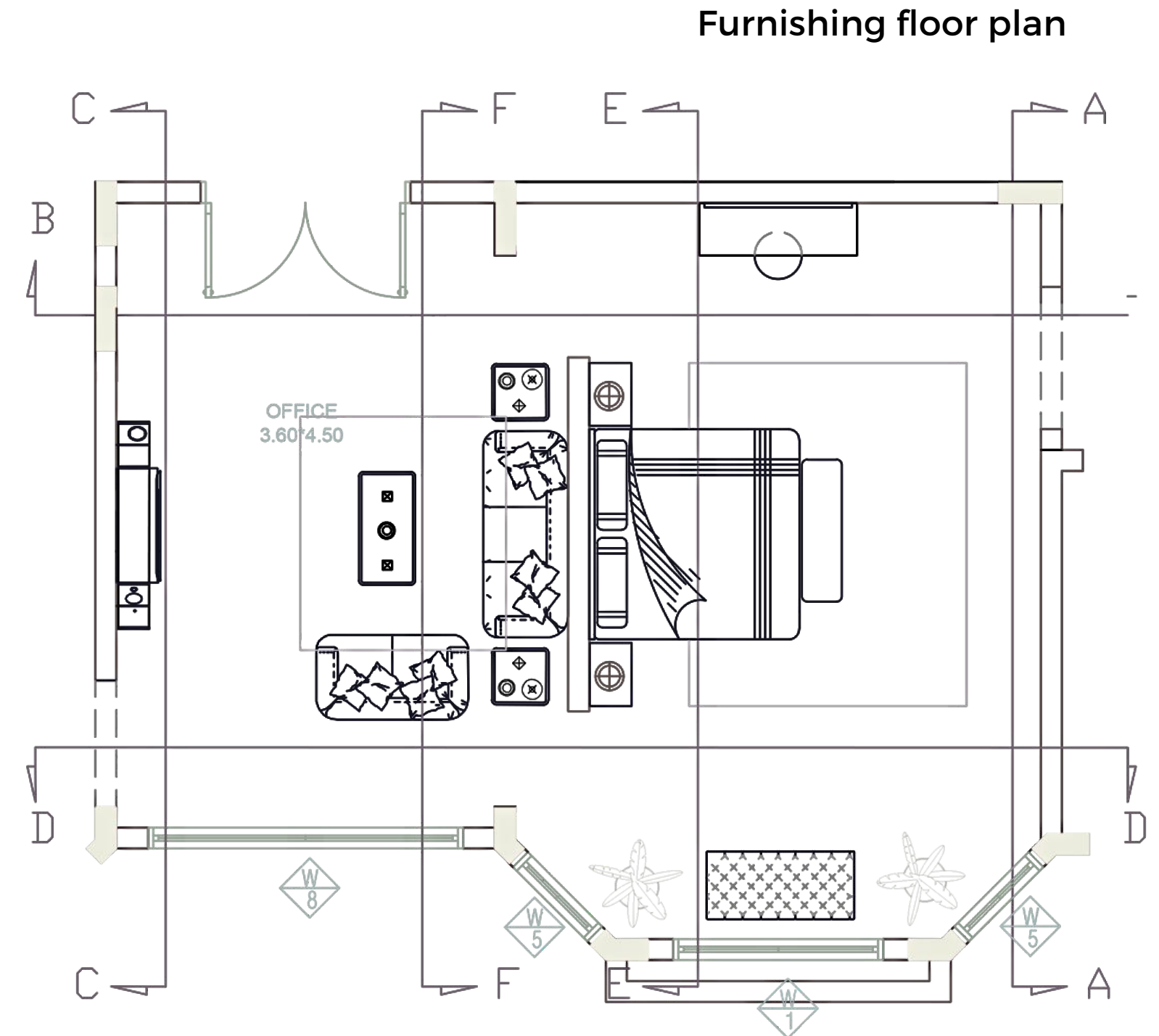
SHOP-DRAWING

we create shop-drawings to help bring your designs to life.

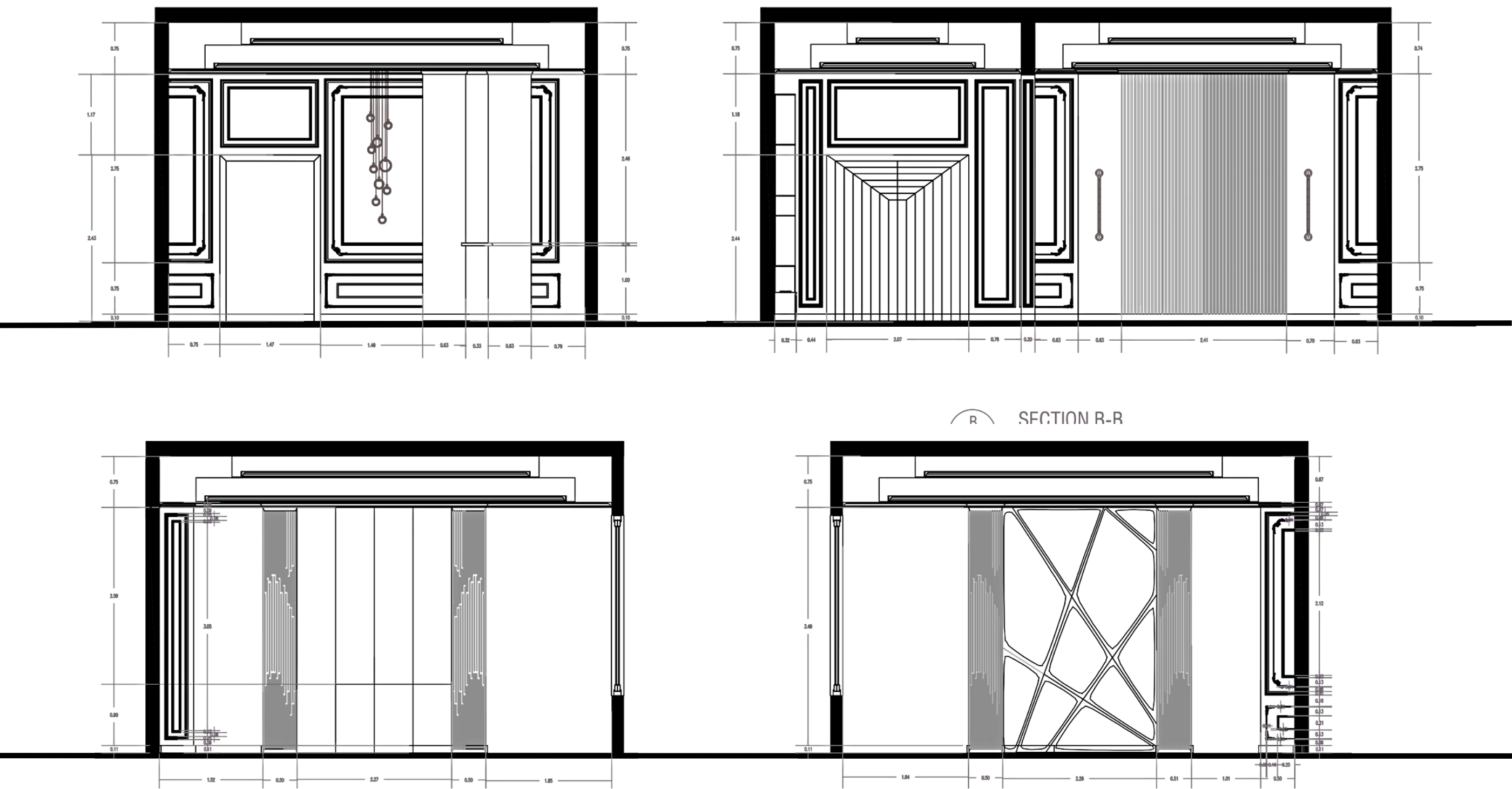
we provide drawings for each space both dimensional and electrical, in details. Here is a list of a sample of the drawings we provide:

- Area plan
- Room dimension plan
- Furniture plan
- Floor design plan
- Carpet plan
- Looking up and curtain box plan
- Gypsum wall plan
- Electrical plan
- Design sections
- electrical sections

This is a sample of the drawings we create, detailed to meet your needs, and help you get each and every space designed, implemented accurately. Firstly, a furnishing floor plan.



DESIGN SECTIONS



Secondly, design sections in four different directions of the bedroom showing the details of the walls, the panels, the cladding and the marble all in details as per the design. The dimensions are also indicated to further detail the shop-drawing of the space. This is all to produce the desired outcome.

VIDEO

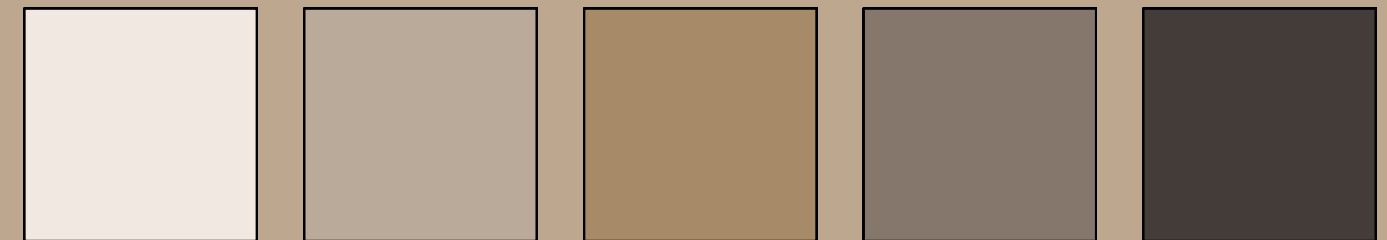
Lastly, a rendered video mimicking what the space would look like in reality, while giving you a tour in it.





HOME OFFICE

This home office is designed with a neo-classical design style, on the simpler side of it. the walls are decorated with panels of the same color and wooden boards are used to give color and life to the space. the accent of champagne gold and marble desk slab are acting as reflective surface to help widen the space and give it a more luxurious feel.



This home office is designed with a monochromatic color scheme to match the neo-classical design style and to help exaggerate and compliment the fine details without it over bearing.

MATERIALS

This place uses wood paneling painted in off-white and walls of the same color. It is brought to life with wooden boards to give it color and light grayish brown color in the furniture to compliment the boards. finally an accent of champagne gold is added to bring it all together.



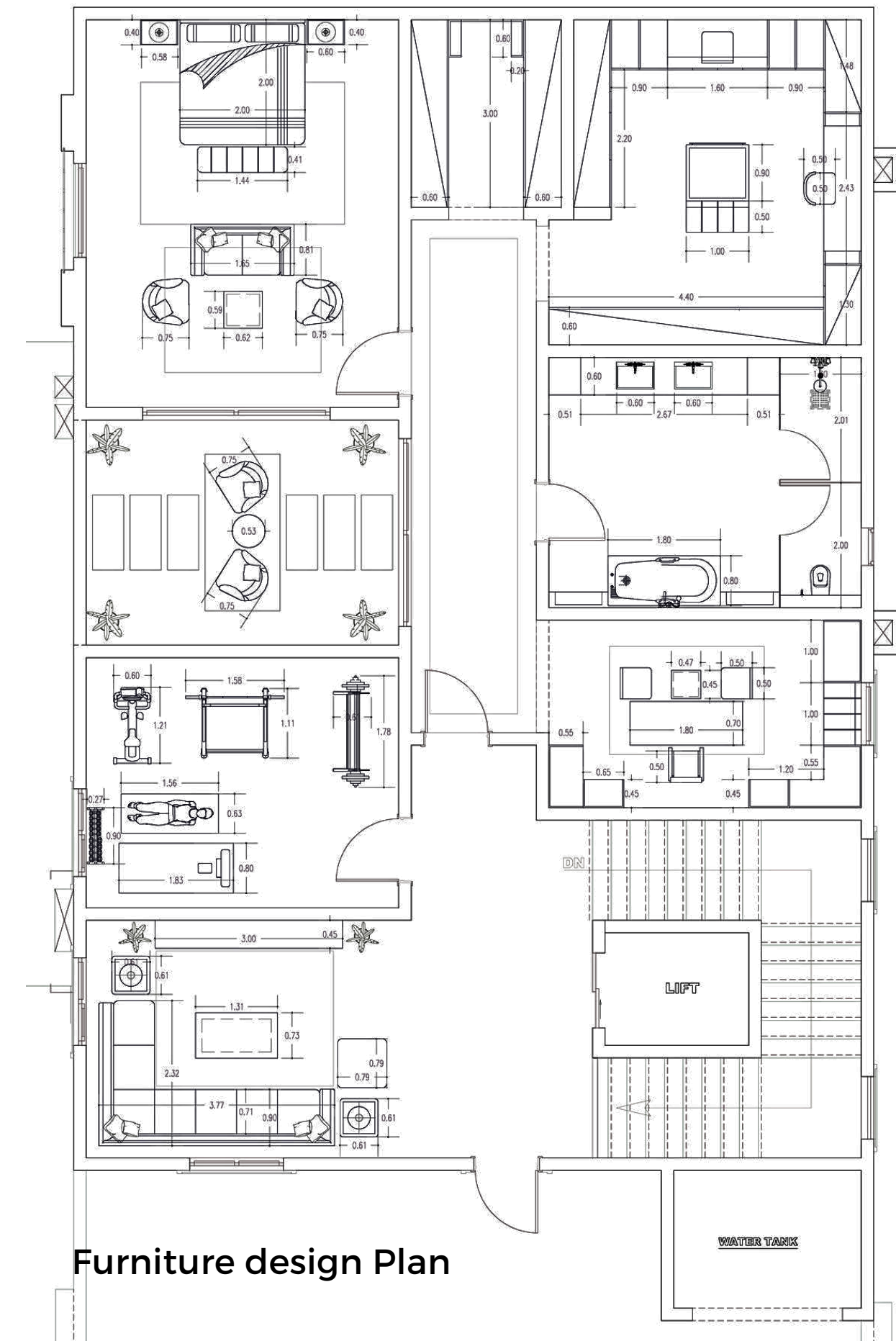
SHOP-DRAWING

we create shop-drawings to help bring your designs to life.

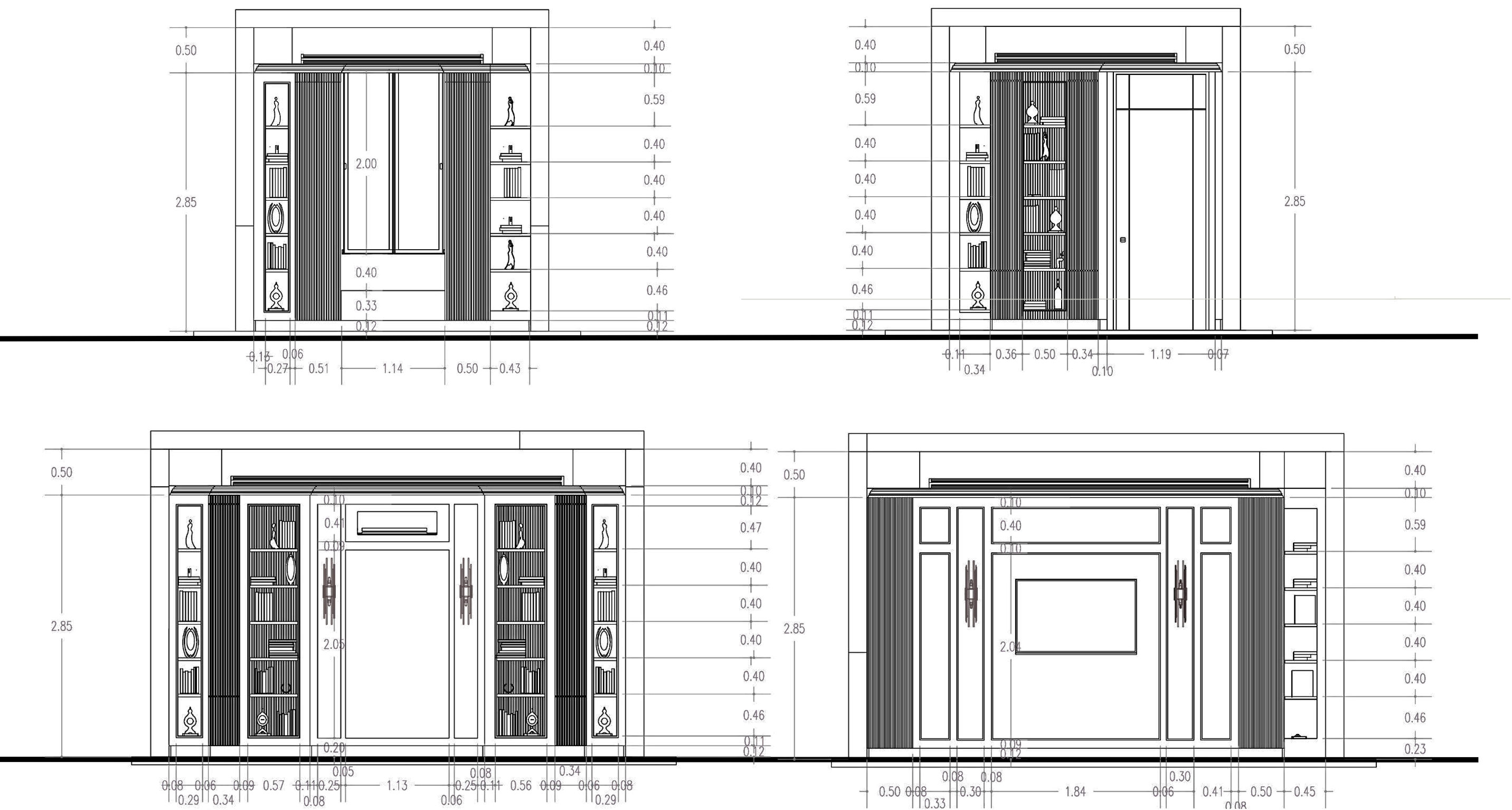
we provide drawings for each space both dimensional and electrical, in details. Here is a list of a sample of the drawings we provide:

- Area plan
- Room dimension plan
- Furniture plan
- Floor design plan
- Carpet plan
- Looking up and curtain box plan
- Gypsum wall plan
- Electrical plan
- Design sections
- electrical sections

This is a sample of the drawings we create, detailed to meet your needs, and help you get each and every space designed, implemented accurately. Firstly, a furniture design plan.



DESIGN SECTIONS



Secondly, design sections in four different directions of the home-office showing the details of the walls, the cladding, the wooden shelves and the wall panels as per the design. The materials, colors and dimensions are also stated as guidance during implementation, all to produce an outcome that is the realistic version of the design.



Thirdly, electrical sections in four different directions of the home-office showing the details of the LED light strips, the wall-lights, the sockets and switches and any electric outlet. The specifications of the items placed is also indicated on the drawings to allow for accuracy of implementation on site.

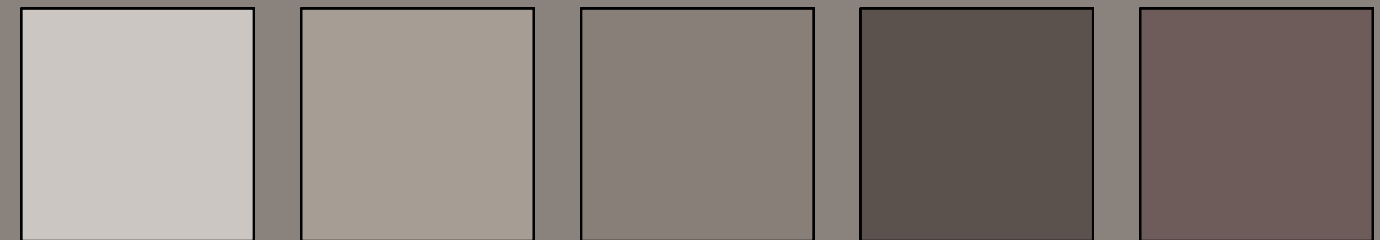


NETFLIX



ENTRANCE HALL & SEATING AREA

This entrance hall is made special with a small inner courtyard designed to add to the indoor space while being a state of art in itself. This design is using a neo-classical style depicted in the wall paneling the marble carpets and the statues used as accessories to help bring the space together.



This design is using complementary color scheme where yellow is toned down to off-white and darker shades of it and purple is toned to a lighter and softer shade.

MATERIALS

This space uses a wide range of materials varying from marble carpets to wall panels made with wood to paint covering the walls and panels, from wooden floors in the inner court to concrete slabs and tempered glass surrounding it. Plants wall art and curtains help bring the space to life.



SHOP-DRAWING

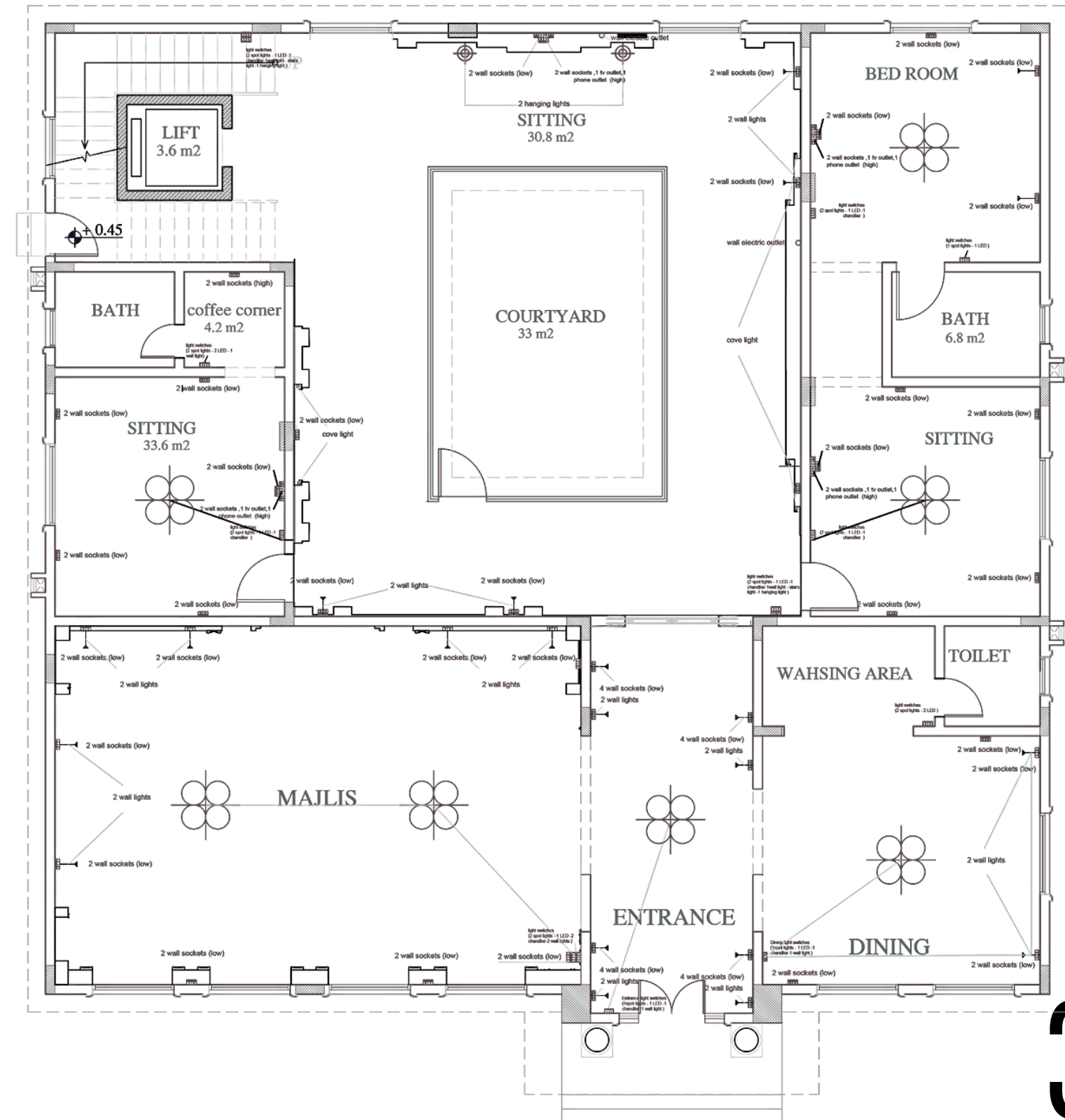
we create shop-drawings to help bring your designs to life.

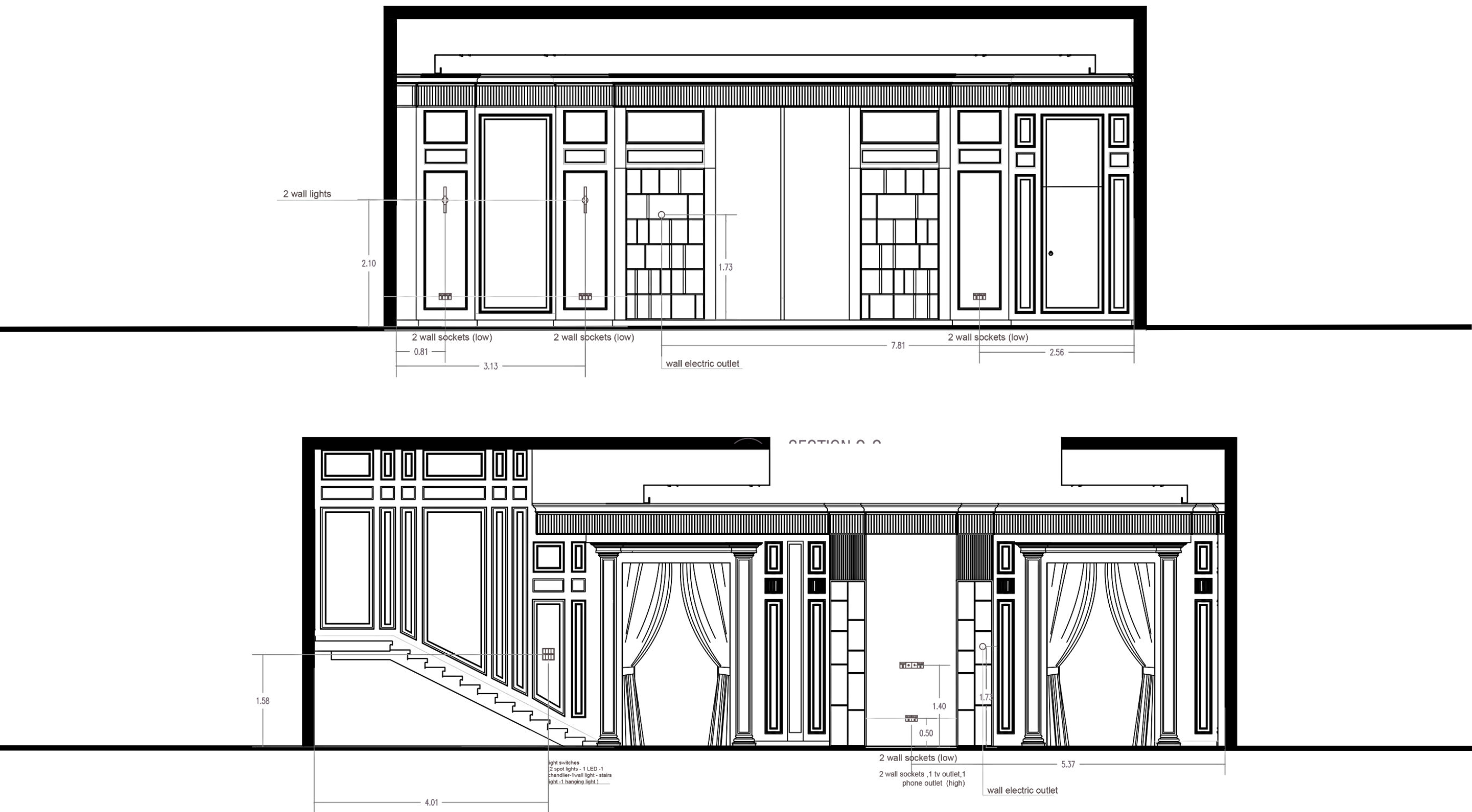
we provide drawings for each space both dimensional and electrical, in details. Here is a list of a sample of the drawings we provide:

- Area plan
- Room dimension plan
- Furniture plan
- Floor design plan
- Carpet plan
- Looking up and curtain box plan
- Gypsum wall plan
- Electrical plan
- Design sections
- electrical sections

This is a sample of the drawings we create, detailed to meet your needs, and help you get each and every space designed, implemented accurately. Firstly, an electrical floor plan.

Electrical floor plan





Secondly, electrical sections in two different directions of the Entrance hall with inner courtyard showing the details of the electrical outlets, the sockets and switches, the wall lights and the LED strips. These are all with indicated dimensions and specifications to allow for accurate implementation of the design.

VIDEO

Lastly, a rendered video mimicking what the space would look like in reality, while giving you a tour in it.





GENTLEMENS' MAJLIS

This gentlemen's majlis is designed to give a classical style with a touch of Arabic/Islamic design style. The floor seating is the way people sit to be comfortable and the chairs are a more formal way of seating. The guns and swords used as accessories on the walls are a piece of heritage brought to give the space its old and masculine vibe.



In this space we used a split complementary color scheme to keep the space from being over-crowded yet bring out the sophistication and details in it.

MATERIALS

This majlis uses a wide range of materials to achieve this magnitude of elegance. We used gypsum and wooden panels for the walls, as well as gypsum board to create the spotlight grooves. Wood CNC panels are used to create the Islamic design on walls. Book match marble is the aesthetically pleasing view between arches. marble reflective carpets as well as the accessories bring the space to this level of uniqueness.



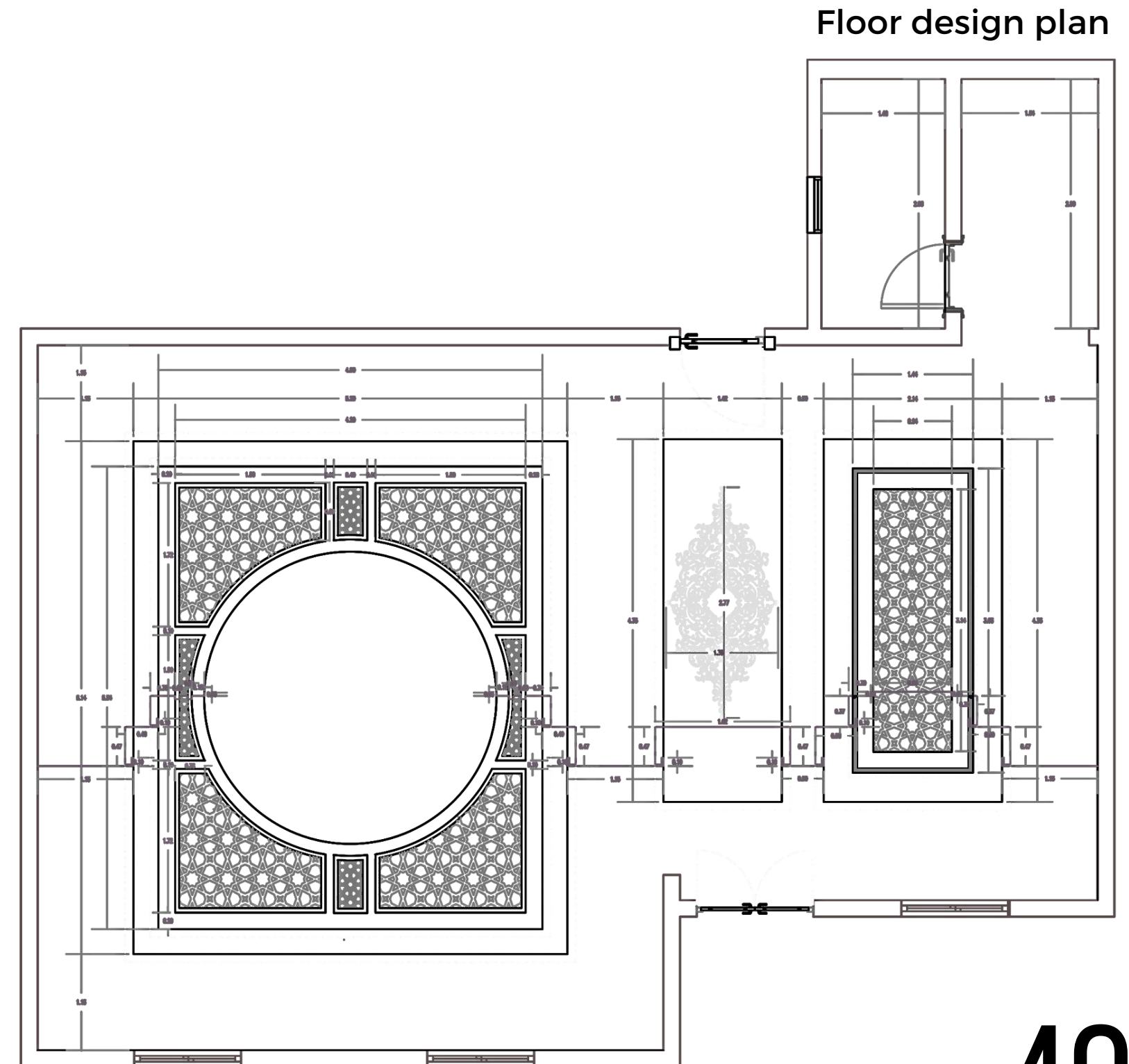
SHOP-DRAWING

we create shop-drawings to help bring your designs to life.

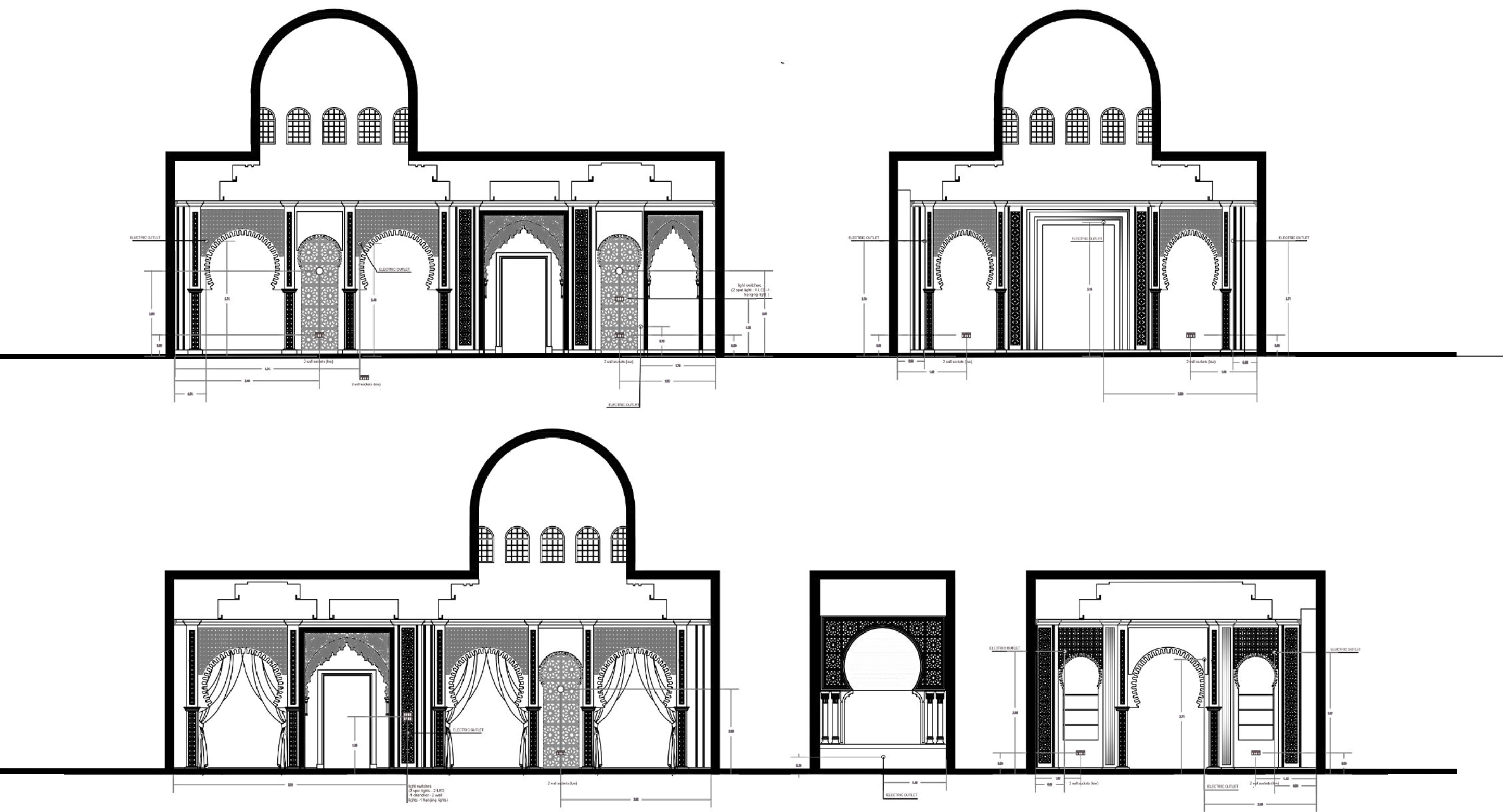
we provide drawings for each space both dimensional and electrical, in details. Here is a list of a sample of the drawings we provide:

- Area plan
- Room dimension plan
- Furniture plan
- Floor design plan
- Carpet plan
- Looking up and curtain box plan
- Gypsum wall plan
- Electrical plan
- Design sections
- electrical sections

This is a sample of the drawings we create, detailed to meet your needs, and help you get each and every space designed, implemented accurately. Firstly, a floor design plan.



DESIGN SECTIONS



Secondly, electrical sections in five different directions of the men majlis showing the details of the electrical outlets, the sockets and switches, the wall lights and the LED strips. These are all with indicated dimensions and specifications to allow for accurate implementation of the design.

VIDEO

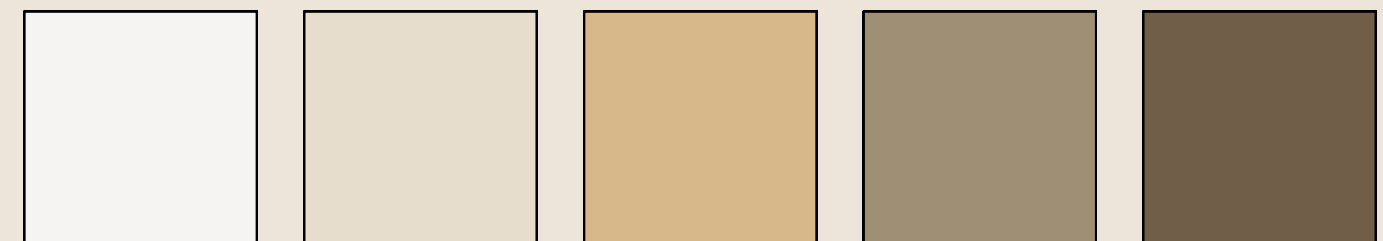
Lastly, a rendered video as a preview of what the place would look like in reality.





DINING ROOM

This dining area is designed in nep-classical design style. Its emphasis is on the wall paneling that compliments the choice of materials and the pieces of furniture creating the balance shown. With shades of yellow, an accent of gold and wood this place has come to its ultimate beauty.



The dining room uses a monochromatic color scheme where yellow is the main color and it is toned down or up to achieve the desired outcome.

MATERIALS

The dining hall uses wooden strips for the wall panels and paint to cover it and the walls with the desired off-white look. The gypsum board in the ceiling creates the leveling desired for the best lighting design. the marble is the highlight of the space reflecting all of the beauty and giving the place a sense of vastness and sophistication. the wood acts as a slight pop of color to make the place lively.



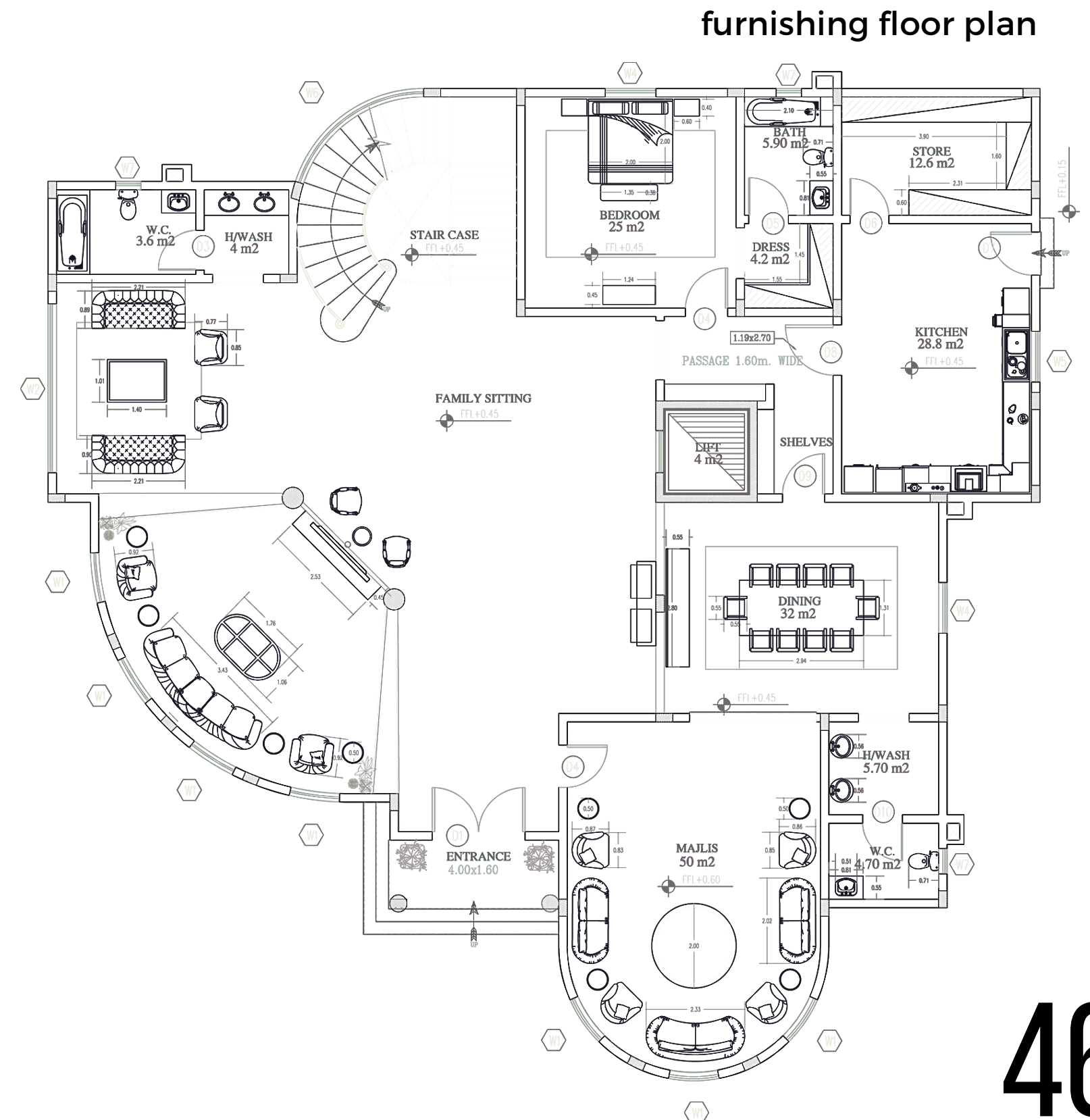
SHOP-DRAWING

we create shop-drawings to help bring your designs to life.

we provide drawings for each space both dimensional and electrical, in details. Here is a list of a sample of the drawings we provide:

- Area plan
- Room dimension plan
- Furniture plan
- Floor design plan
- Carpet plan
- Looking up and curtain box plan
- Gypsum wall plan
- Electrical plan
- Design sections
- electrical sections

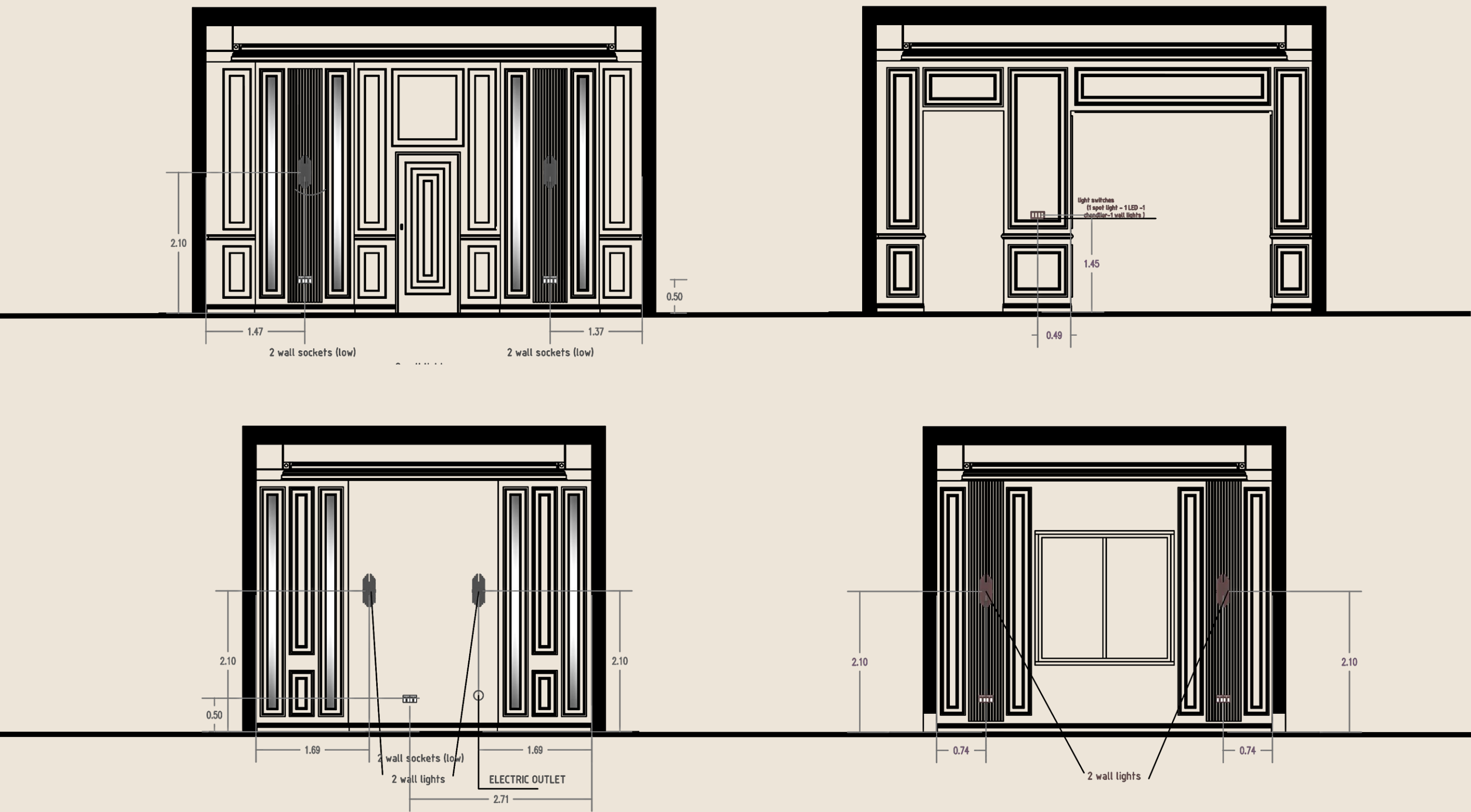
This is a sample of the drawings we create, detailed to meet your needs, and help you get each and every space designed, implemented accurately. Firstly, a furnishing floor plan.



DESIGN SECTIONS



Secondly, displayed here are the design section shop-drawings of the respective dining room. These sections show the dimensions of all the fixed items in the room, in this case, it is all the wall paneling in-terms of width, height and thickness, as well as the size of the door and its details.



Lastly, these are the electrical sections showing the placement of the wall lights, the LED strips, the sockets and switches as well as any electrical outlets. The dimensions are also indicated to help mark the correct places of each item. Specifications are written on each thing to make sure it is bought and placed correctly.

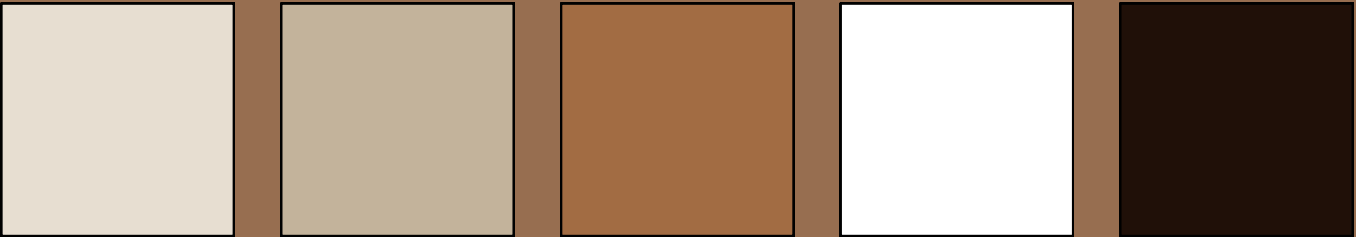


SHTRA | شترة



CONSTRUCTION CONTRACTING COMPANY OFFICE

Wooden boards and a connecting wall to ceiling gypsum board design are what make this space iconic, welcoming and sophisticated. With a display of projects on the side, the office isn't just appealing to clients but also a sales emphasis. The way it is designed to bring natural light to the entire space is mainly for natural light and to provide visual continuity to make the space feel vast.



This shop uses a monochromatic color scheme where yellow is the main color and it is made lighter or darker or toned up and down.

MATERIALS

This space uses wooden floor and wooden boards for the walls. It is designed to have achromatic tones in the paint and gypsum board to create leveling of the ceiling to provide an extra source of light with a special design. tempered glass is what is used to divide the space to make it visually wider and less congested.



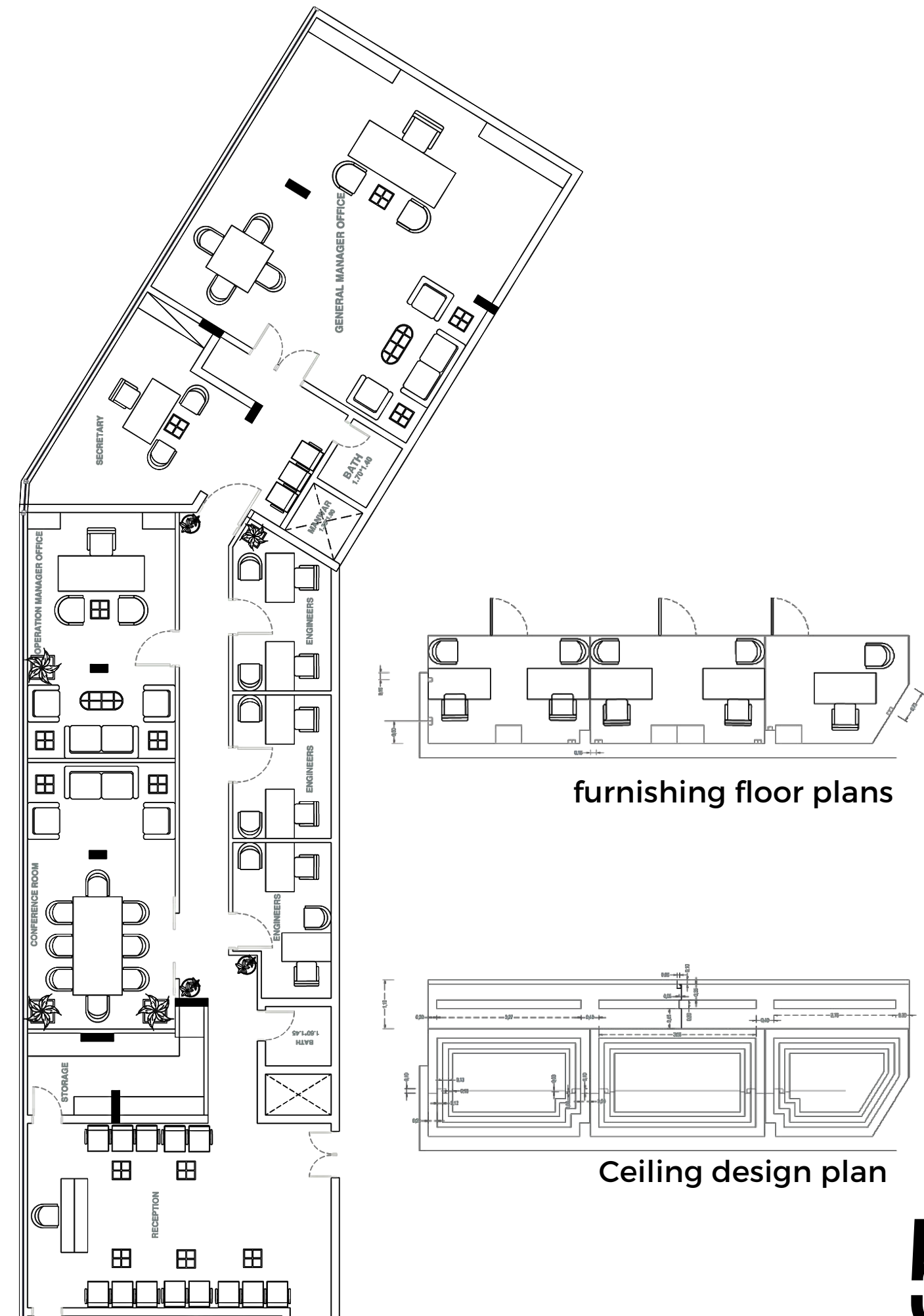
SHOP-DRAWING

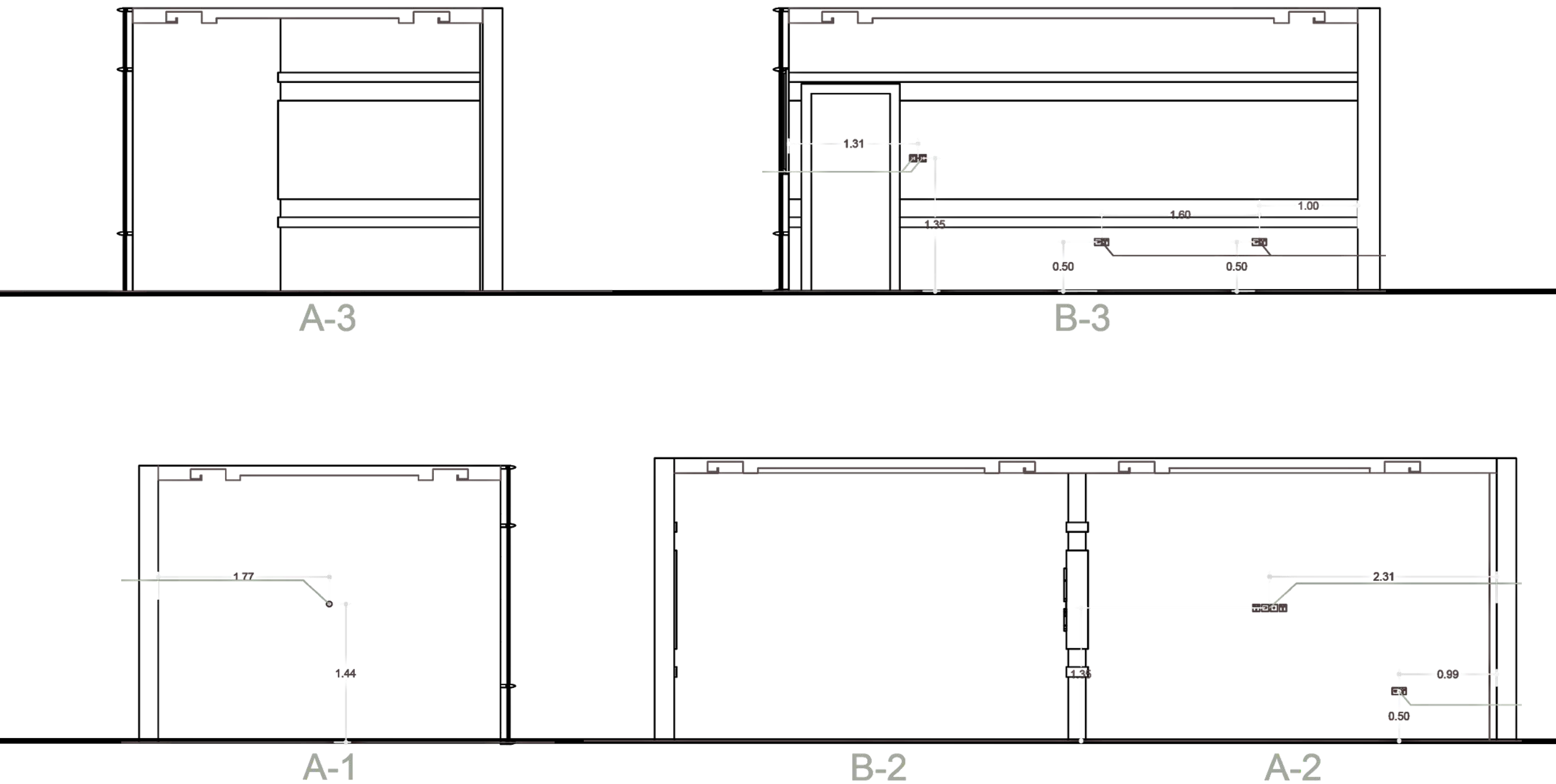
we create shop-drawings to help bring your designs to life.

we provide drawings for each space both dimensional and electrical, in details. Here is a list of a sample of the drawings we provide:

- Area plan
- Room dimension plan
- Furniture plan
- Floor design plan
- Carpet plan
- Looking up and curtain box plan
- Gypsum wall plan
- Electrical plan
- Design sections
- electrical sections

This is a sample of the drawings we create, detailed to meet your needs, and help you get each and every space designed, implemented accurately. Firstly, a furnishing floor plans and ceiling design plan.





Secondly, electrical sections in four different directions of the office showing the details of the electrical outlets, the sockets, the switches and LED strips as per the design. The dimensions are also stated as guidance during implementation, all to produce an outcome that is the realistic version of the design.

VIDEO

Lastly, a rendered video mimicking what the space would look like and another one in reality.

Render

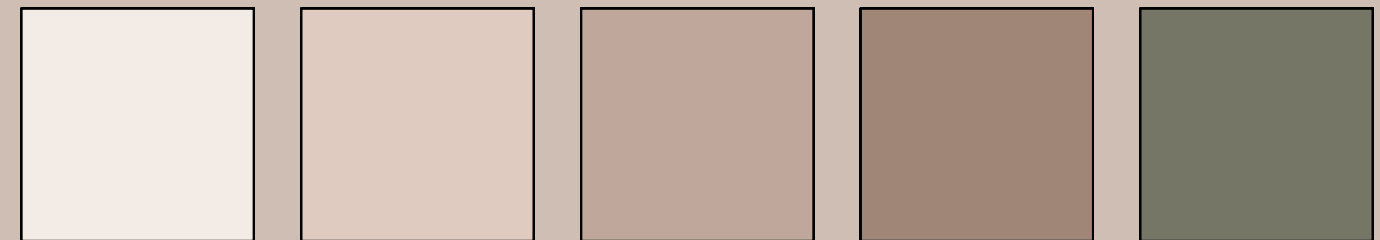
Reality





FLOWER SHOP

This shop is re-designed to be the simplest form of neo-classic. It is focused on previewing the products and accentuating the feel of luxury and beauty that the flowers bring. The softest shade of pink is used to help the flowers pop while giving the space a warm welcoming feel to it.



This shop uses a complementary color scheme. Where light pink is the main color and a touch of green to help compliment the green in the stems and leaves of the flowers.

MATERIALS

Gypsum board, wooden boards and panels as well as wooden floors and paint are the main materials used to create this serene feel to the flower shop. accents of black and gold are used to help pop the flower items displayed.



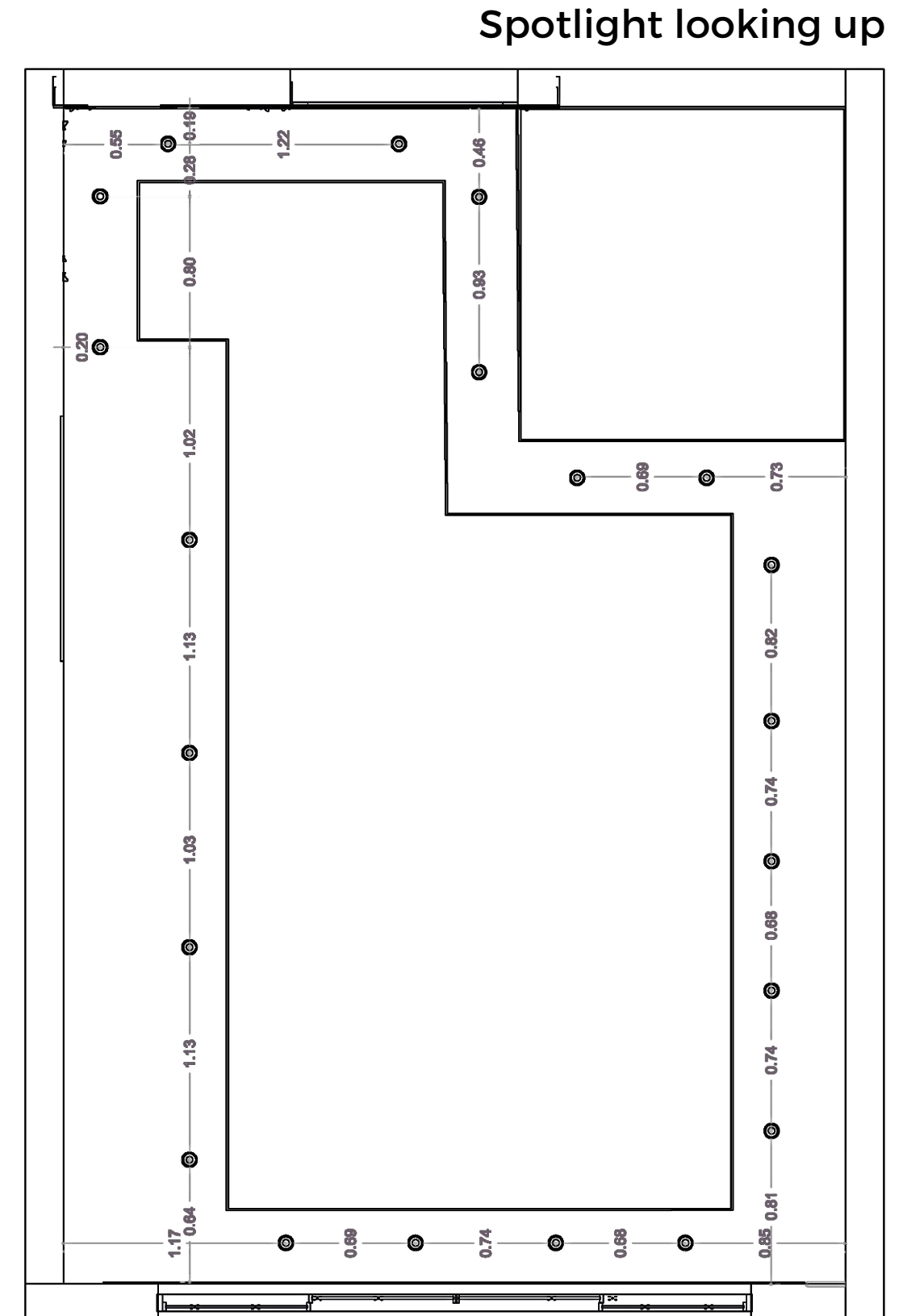
SHOP-DRAWING

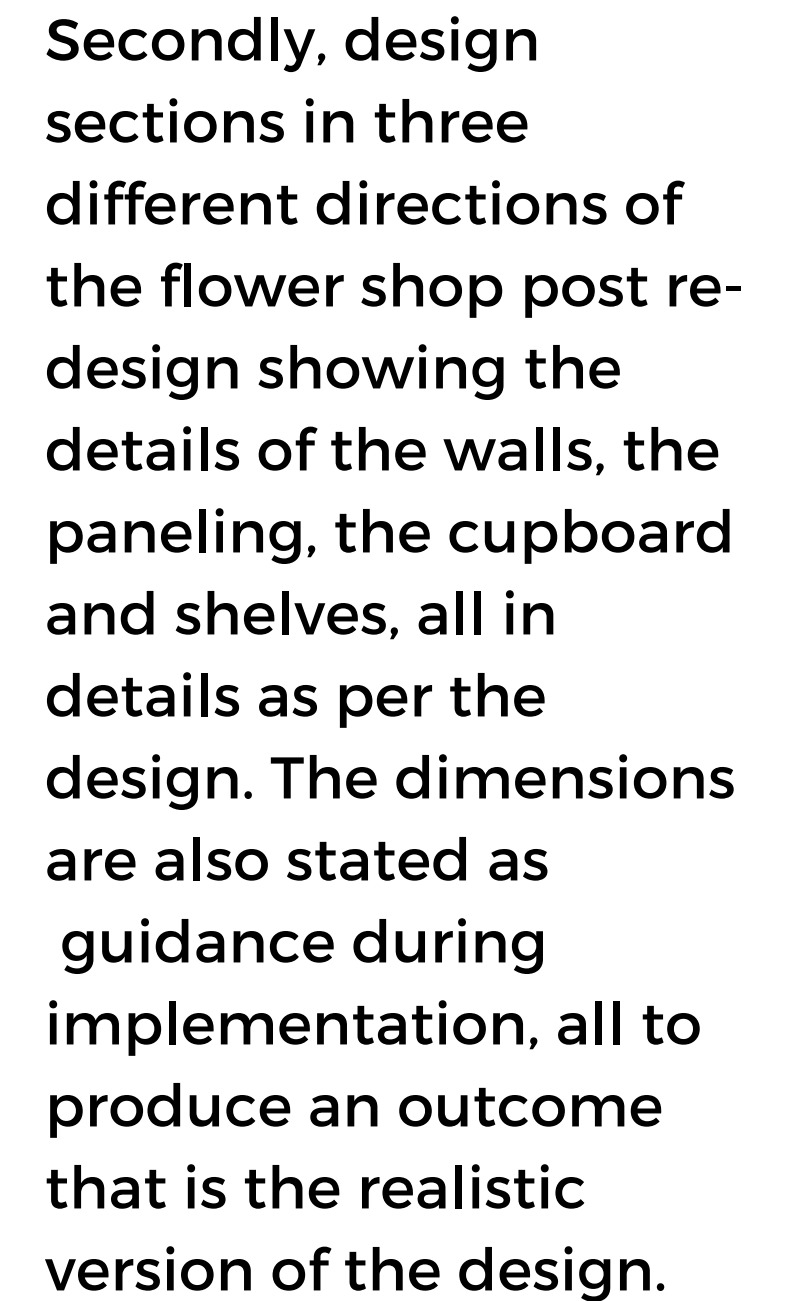
we create shop-drawings to help bring your designs to life.

we provide drawings for each space both dimensional and electrical, in details. Here is a list of a sample of the drawings we provide:

- Area plan
- Room dimension plan
- Furniture plan
- Floor design plan
- Carpet plan
- Looking up and curtain box plan
- Gypsum wall plan
- Electrical plan
- Design sections
- electrical sections

This is a sample of the drawings we create, detailed to meet your needs, and help you get each and every space designed, implemented accurately. Firstly, a spotlight distribution looking up.





VIDEO

Lastly, two videos showing pre and post design of the space in reality.

Reality Pre-design

Reality Post-design



THANK
Serving you is
"A picture is worth a thousand words,"



YOU
our pleasure

but a memory is priceless."

Fred R. Barnard



+97430120142



aliaa.mahmoud.interiors@gmail.com



@aliaa.m.design.studio



aaglan68