



COMPANY —

PRO-FILE

SERVICES
COMPILATION

BIRAWA ADHI PRATAMA
Manpower-Technical Services

TECHNICAL

ENGINEERING SERVICES

Safety
Quality
Integrity
Team Work

V.2 2023



“

HELLO

Vision Without Action
IS A DREAM

CORPORATE MISSION STATEMENT

PT. BIRAWA ADHI PRATAMA formed in February 2015. we consist of Experienced personnel in Oil and Gas Industries, Manufacturing, Pipelines, Construction, Fabrication.

PT. BIRAWA ADHI PRATAMA, combines the capabilities of its highly skilled workforce and experience to develop and deliver effective solutions to complex projects tailored to meet the current and future challenges of local and international clients.

COMPANY PROFILE

INDEX-

ABOUT OUR COMPANY	01
ROPE ACCESS SERVICE	03
MANPOWER SUPPLY	05
WELDING HABITAT	07
ONSITE-INSITU MACHINING-ENGINE OVERHAUL	09
PWHT - HEAT TREATMENT	11
HOT-TAPING - LINE STOP	13
FLANGE FACING	15
COLD CUTTING	16
BOLT TORQUE - TENSIONING	17
ONSITE CALIBRATION	18
WELDING PROCEDURE - WPS-PQR	19





03

ROPE ACCESS

WHAT IS ROPE ACCESS?

Industrial rope access is a method of work positioning that takes climbing and abseiling techniques to provide a cost effective access solution to areas which would be otherwise inaccessible, impractical or unsafe, without the use of scaffolding, cradles or an aerial work platform.

Easier access to awkward or narrow areas. Rope access technicians can get access to all areas which ensure the integrity of plant and equipment is maintained.

APPLICATION :

- ☑ NDT (NON DESTRUCTIVE TESTING)
- ☑ ROPE ACCESS WELDING-(WELDER)
- ☑ CONFINED SPACE INSPECTIONS
- ☑ CORROSION ASSESSMENT
- ☑ STRUCTURAL SURVEYS

- ☑ PAINTING -BLASTING - COATING
- ☑ WATERPROOFING
- ☑ FIREPROOFING
- ☑ INDUSTRIAL COATING

- ☑ REPAIR & MAINTENANCE
- ☑ HIGH RISE BUILDINGS
- ☑ FACTORY
- ☑ BRIDGES
- ☑ CLEANING
- ☑ ALUMINIUM COMPOSITE PANEL
- ☑ HIGH BUILDING EKSTERIOR MIRROR WALL

BIRAWA

info@birawa.co.id

www.birawa.co.id





05

MANPOWER SUPPLY

We have the ability to source both locally and overseas the most qualified personnel to fill in your future projects. Their abilities cover the fields of mechanical, piping, qualified welder, instrumentation or electrical.

Determined for Teamwork, Quality, Commitment to Safety, Competitiveness, We cater the demands and needs of oil & gas companies, whether upstream or downstream, onshore-offshore locations, that need the support of qualified manpower.

We are able to deal with documentation from Visa, Work Permit, Medical Checkup, prior Mobilization since our crew are experience to work abroad

SKILLED WORKER

ONSHORE-OFFSHORE CREW

- Welder 3G-6G-6GR
- Welder GTAW-SMAW-FCAW-GMAW
- Automatic Welder (Saturnax)
- Pipefitter - Structural Fitter
- Line up Operator
- Rigger - Signalman - Banksman
- Scaffolder - Scaffolder Accessor
- Painter-Blaster-Coating
- Electrician
- Instrumentation
- Insulator
- Crane Operator

- Project Supervisor
- Construction Supervisor
- QA-QC
- Welding Inspector
- Coating Inspector
- HSE Officer
- Safety Man

and more....Contact us for your project!

BIRAWA

info@birawa.co.id

www.birawa.co.id





07

WELDING HABITAT

Habitat is a tent made of flexible fire retardant panels designed to be enclosed over an area where hot work is performed in order to create an overpressure environment that acts as a barrier between an ignition source (hot work) and an explosive fire hazard (hydrocarbon). It is a portable and inflatable structure designed to facilitate hot work for use in hazardous areas.

It is a stand-alone system that does not require tie-in to vessel gas detection or control systems, or costly production shut downs. The fire retardant panels easily fit together to provide a pressurized environment, creating a safe enclosure when there is a requirement for hot work (welding, burning, cutting, grinding etc.) and electrical cabling in potentially hazardous areas.

APPLICATION :

- WELDING
- GRINDING
- CUTTING
- ABRASIVE BLASTING
- BRAZING
- SOLDERING

INDUSTRIES

Offshore Oil and Gas, Petrochemical, Refinery,

Floating, Production, Storage and Offloading, FPSO.

ALARM WARNING SYSTEM

- Temperature >42 °C
- Emergency Alarm Activated
- Equipment Malfunction



BIRAWA

info@birawa.co.id

www.birawa.co.id



Dynamic size, modular system can be adapted to the work area.
Standard size is: 4m x 4m 2m.



09

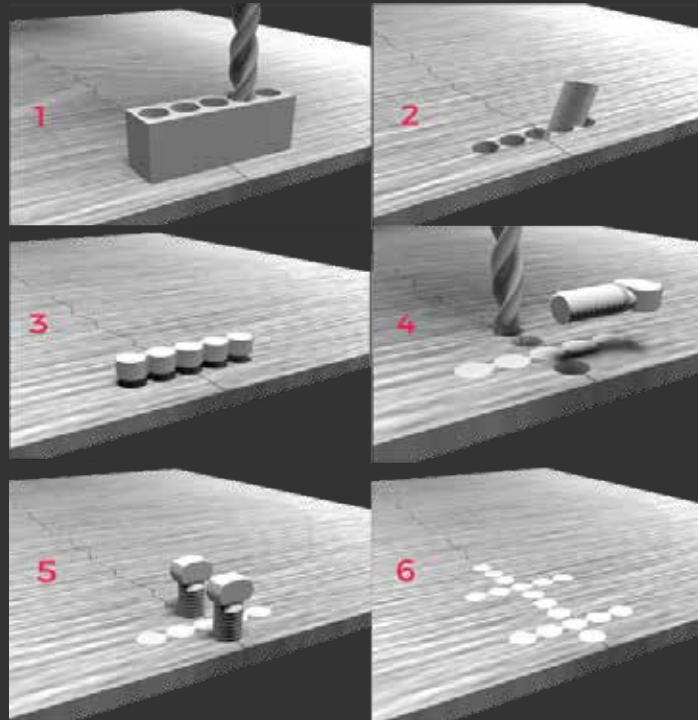
MACHINING

ONSITE-INSITU ENGINE-OVERHAUL

ONSITE-INSITU MACHINING

In Onsite Machining work, We are capable for the following works :

-METAL STICHING : Allow to Permanently repair Crack Blow out without Welding



Metal Stiching Is Ideal For Repairing:

- Frost damaged blocks and cylinder heads
- Stress fractures
- Holes in blocks
- Broken lugs and studs
- Fractured transmission and diff

-LINE BORING - GRINDING

Our team are capable to assembly custom portable machine required to do the On-site-in situ machining, by previously site visit and determined the appropriate method and machines type.

ENGINE-OVERHAUL

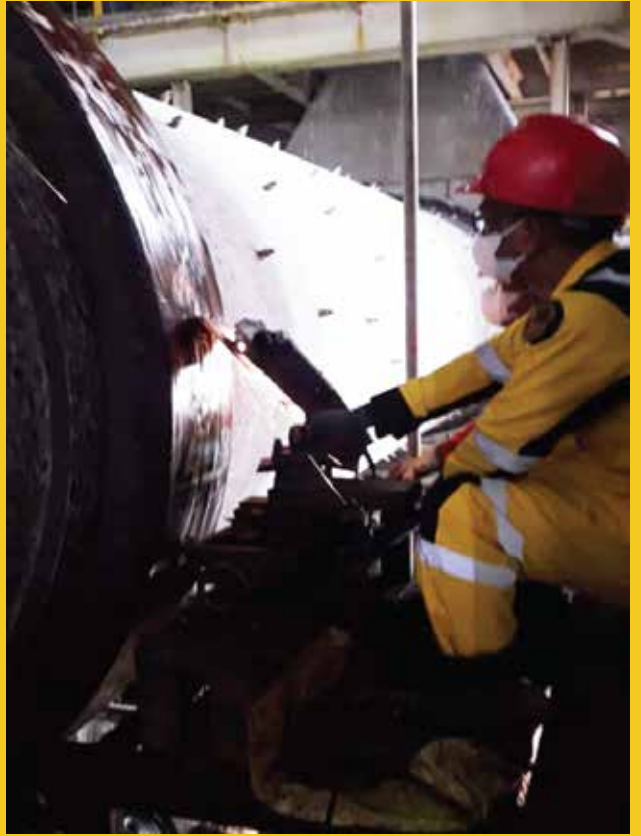
We offer Onsite Machining services for scheduled maintenance, construction, emergency repairs.

This Service is very suitable for our client who have large Equipment,Engine,workpiece and required heavy cost to be removed or unable to be removed

BIRAWA

info@birawa.co.id

www.birawa.co.id





PWHT-HEAT TREATMENT

PWHT is a controlled process in which a material that has been welded is reheated to a temperature below its lower critical transformation temperature, and then it is held at that temperature for a specified amount of time.

It is often referred to as being any heat treatment performed after welding; however, within the oil, gas, and petrochemical industries, it has a specific meaning. Industry codes, such as the ASME Pressure Vessel and Piping Codes, often require mandatory performance of PWHT on certain materials to ensure a safe design with optimal mechanical and metallurgical properties.

OUR SERVICES

- ☑ PRE HEATING
- ☑ STRESS RELIEVING
- ☑ DRY OUT
- ☑ PWHT ON PIPELINE
- ☑ PWHT ON SPHERICAL TANK
- ☑ PWHT ON STORAGE TANK
- ☑ TEMPERING
- ☑ SOLUTION ANNEALING
- ☑ INTERNAL-EXTERNAL GAS FIRING
- ☑ SOLUTION ANNEALING



BIRAWA offer a full range of on site heat treatment services, to the power industry, oil and gas, fabrication and casting industries.

Working safely and closely to meet the clients specific procedures and requirements, to enable a quality service at a competitive cost.

BIRAWA





13

HOTTAP-LINE STOP

Hot Tapping refers to attaching connections and associated equipment to pipelines while they remain operational and, or under stress, minimizing impact and the potential costly need to shut down existing services. Hot Tap can be done from any angles.

Line Stopping or line plugging is a means of isolating a piping system to provide a shut off where none exists. This process serves as a control, or temporary valve, that can be removed after permanent alterations or valve replacements-additions have been made. With a hot tap previously made on a line, a line stopper is attached to a temporary valve, and the valve is opened. The line stopper is hydraulically or mechanically pushed into the line to seal the pipe. The main is supported by the line stop sleeve. After performing the necessary service, the stop is removed, and a blind flange is installed on the sleeve

HOTTAP APPLICATION

- ☑ PREVENTING SHUTDOWN
- ☑ NEW CONSTRUCTION TIE-INS
- ☑ INSTALLATION OF BY-PASS PIPING SYSTEMS
- ☑ PRESSURE AND VACUUM INSTALLATIONS
- ☑ NEW PIPELINE CONSTRUCTION
- ☑ SIGHT GLASS INSTALLATION
- ☑ VALVE INSTALLATIONS
- ☑ THERMOWELL COUPLING INSTALLATION

COMMON USE

- ☑ NATURAL GAS
- ☑ CONDESATE
- ☑ COMPRESSED AIR
- ☑ PROCESS CHEMICALS
- ☑ CHILLED WATER
- ☑ RAW WATER
- ☑ PETROLEUM PRODUCTS



We provide Hot Tap Services ranging from 1/2 inches to 40 inches.

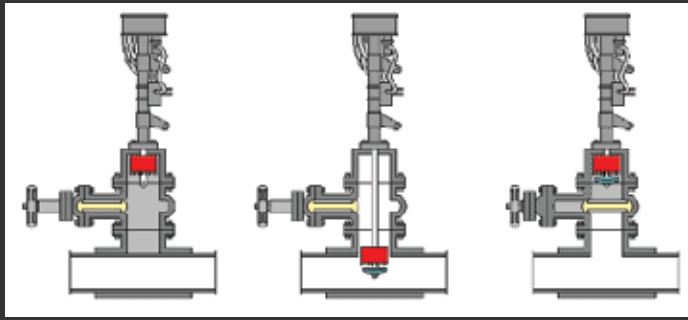


BIRAWA

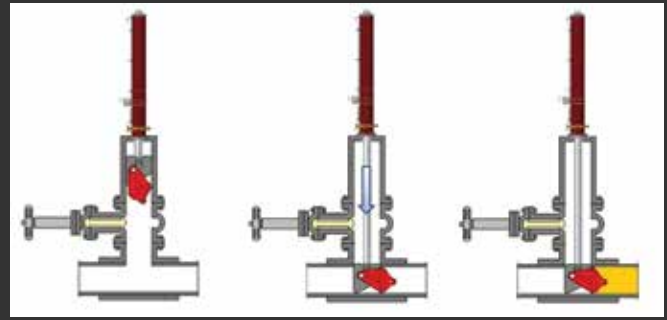
info@birawa.co.id

www.birawa.co.id

HOT-TAP PROCESS



LINE STOP PROCESS



INFLATABLE PLUGS

We capable to develop Hot Tapping procedure, with balloon plugs and successfully completed in our projects.



15

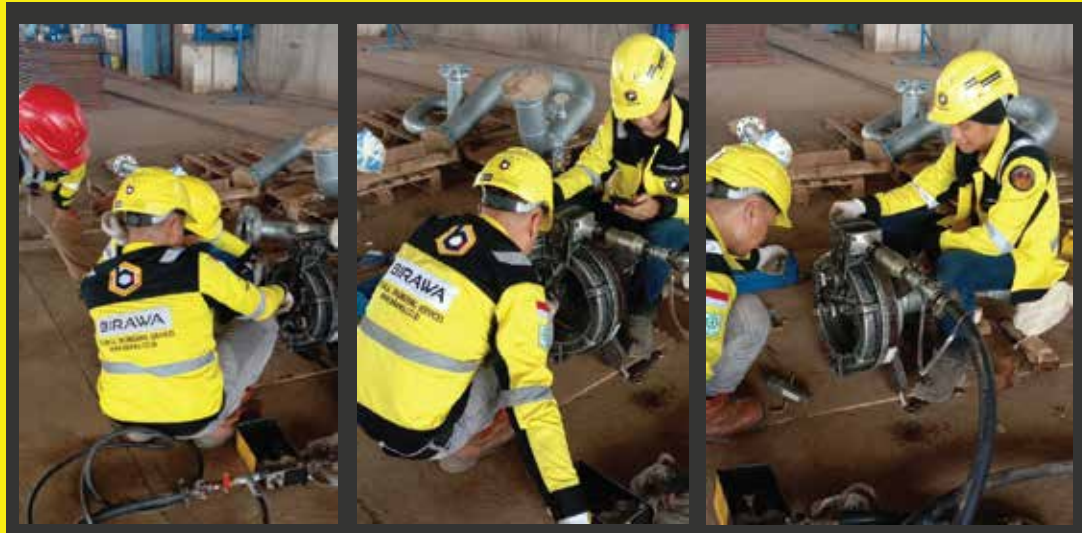
FLANGE-FACING

Flange facing is a machining maintenance service conducted on flange surfaces. Timely maintenance and repair of flanges help avoid leakages and corrosion. These services ensure old flanges continue to maintain joint integrity between them.

Our Flange Facing Equipment is able to perform:

- Flange range of 0-305mm (0" to 12").
- Flange range of 711 mm (28") to 1829 mm (72").
- It can mount inside flanges having 1219mm (48") bores and can machine out to over 3048mm (120") in diameter.

Mount equipment so no matter the flange we can machine it in place, and all work is done to industry standards and specifications.



info@birawa.co.id

BIRAWA

www.birawa.co.id



COLD-CUTTING

Cold cutting allows you to cut and chamfer your piping without generating flames or sparks in your system, which prevents any ignition of residual gases contained inside out-of-service lines.

Cold cutting machines allow us to cut and bevel pipe simultaneously. With our integrated services and versatile equipment, we can simply mount a different attachment in the field with minimal delays.

Cold Cutting Range Services
2" – 41"

Functions:
Cutting and Beveling

Materials:
Carbon steel, Stainless steel, Duplex, Inconel, others.

Power:
Pneumatic



BIRAWA



17

BOLT TORQUE-TENSIONING

PT. Birawa Adhi Pratama provide Hydraulic Bolt Tensioning and Torquing Service inclusive of Joint Integrity Management for upstream and downstream sectors including topside applications.



RANGE OF SERVICES

- ☑ Hydraulic Bolt Tensioning
- ☑ Hydraulic Fastening
- ☑ Pneumatic Fastening
- ☑ Electric Fastening
- ☑ Manual Fastening



The aim is to achieve **LEAK FREE** system prior start up. We have inventories of both bolt tensioning and toroung equipment's



BIRAWA

info@birawa.co.id



www.birawa.co.id



ONSITE-CALIBRATION

PT. Birawa Adhi Pratama provide calibration service aimed at detecting the inaccuracy and uncertainty of a measuring instrument or piece of equipment. In calibration, the device under test (DUT) is compared to a reference of known value to determine the deviation of the measurement from the true value. We also provide On site or Field Calibration for both onshore and offshore vessel, supported by personnel ready BOSIET and HUET training.

RANGE OF SERVICES

- ☑ Weight and Balance Calibration
- ☑ Dimensional Calibration
- ☑ Pressure Calibration
- ☑ Force Calibration
- ☑ Electrical Calibration
- ☑ Temperature Calibration
- ☑ Analytical Instrument Calibration
- ☑ Volumetric Calibration
- ☑ Other Calibration, which included :
 - Anemometer
 - Barometer
 - Flow Meter
 - NDT Equipment
 - Gas Detector
 - Sound Level Meter
 - Vibration Meter
 - Lux Meter



BIRAWA

info@birawa.co.id



WPS-PQR

Welding Procedure Specification (WPS) is the formal written document describing welding procedures, which provides direction to the welder or welding operators for making sound and quality production welds as per the code requirements .

The purpose of the document is to guide welders to the accepted procedures so that repeatable and trusted welding techniques are used. A WPS is developed for each material alloy and for each welding type used. Specific codes and/or engineering societies are often the driving force behind the development of a company's WPS.

A WPS is supported by a Procedure Qualification Record (PQR or WPQR). A PQR is a record of a test weld performed and tested (more rigorously) to ensure that the procedure will produce a good weld. Individual welders are certified with a qualification test documented in a Welder Qualification Test Record (WQTR) that shows they have the understanding and demonstrated ability to work within the specified WPS

“ Ensure Compliance to Various Welding Codes

We Provide for the following standard :

ASME - AWS - API - EN - DNV

Endorsed Regulator :

MIGAS - KEMENAKER - DNV GL, EBTKE

BIRAWA



PROJECT EXPERIENCES

1. Rope Access Services - Inspection - Jakarta International Crane Terminal - PT. Biro Klasifikasi Indonesia. - 2016.
2. Welder Performance Qualification for Kazakhstan Construction Project - Stangazstroy - 2016.
3. Rope Access Services - Inspection - Halliburton Rig - PT. Biro Klasifikasi Indonesia - 2017.
4. Rope Access Services - Cleaning Coal Bunker - PT. Tahta Laksana - 2018.
5. In-SITU Machining PITCH Ring Services - PT. Multi Nitrotama Kimia - 2018.
6. Well Head Control Panel Services - PT. Meindo Elang Indah - 2018.
7. Manpower Supply 32 Personnel- Offshore Pipeline 11.5Km SP Project (GMAW-FCAW) - PT. Meindo Elang Indah - 2018.
8. General Overhaul Deutz Engine - PT. Kaltim Methanol Industri - 2018.
9. Repair and Calibration of Injection Pumps and Turbo Chargers - PT. Kaltim Methanol Industri - 2018.
10. Post Weld Heat Treatment Services (PWHT) - PT. VH Boiler and Energy - 2018
11. Rope Access Services Wind Turbine Maintenance 1- Jeneponto Sulawesi - PT. Ale Heavy Lift - 2018
12. Rope Access Services Wind Turbine Maintenance 2- Jeneponto Sulawesi - SIEMENS Gamesa - 2018
13. Manpower Supply - CSTS Train 3 BP Tangguh - PT. Indotech Karya Mandiri - 2018-2019
14. Manpower Supply 32 Personnel - Offshore Pipeline 13Km PRRP Project (GMAW-FCAW) - PT. Meindo Elang Indah - 2018
15. Hottap Services 1-1/2" | 3/4" - PT. Eka Dwi Jaya - 2018.
16. Hottap Services 2" - 4", 3 Spot - PT. Kaltim Parna Industri - 2019
17. Manpower Supply 32 Personnel - Offshore Pipeline 12KM YY Project - PT. Meindo Elang Indah - 2019
18. Welding Habitat 3 Unit and Technician - YYA Project KLB Platform (GMAW-FCAW) - PT. Meindo Elang Indah - 2019
19. OnSite Calibration - Moment Motor Torque Engine Calibration - PT. Superior Energy Indonesia - 2019

PROJECT EXPERIENCES

20. Post Weld Heat Treatment Services (PWHT) Carbon Steel Pipe 12" SCH 120, Offshore KLB Platform - PT. Meindo Elang Indah - 2019

21. Manpower Supply - 72 Personnel (Welders,Fitter,Riggers,Scaffolder,Painter-blaster,Construction Supervisor) for Pipeline and Top Side Jacket Installation - KLD New Field Development Project - PHE ONWJ - 2020

22. Manpower Supply - 76 Personnel (Welders,Fitter,Riggers,Scaffolder,Field Joint Coating HSS-HDPUF) for Offshore Pipeline 16" GMAW-FCAW - JAWA-1 PLTGU - Cilamaya - PERTAMINA POWER - 2020

23. Manpower Supply - 96 Personnel (Welders,Fitter,Riggers,Scaffolder,Field Joint Coating HSS-HDPUF) for Offshore Pipeline 16" GMAW-FCAW & 6" FULL SMAW Downhill Pipeline Piggyback Welding (Dual Line) - Gresik-Lamongan - PGN SAKA - 2020

24. Fabrication Fit Up and Welding Service - Cilegon - PT. ASUKA ENGINEERING INDONESIA - 2020

25. Hottaping 6"x4" - 2 Spot - PT. Chandra Asri Petrochemical Tbk -2020

26. Hottaping 16" - 1 Spot Cilegon - PT. Chandra Asri Petrochemical Tbk - 2021

27. Onsite Machining Tire Predyer - PT. Multi Nitrotama Kimia - 2022

28. Flange Facing Services 0,5-6" 19 pcs - PT. Meindo Elang Indah - 2022

29. Onsite Calibration 15 pcs Flow Meter - PT. Amman Mineral Nusa Tenggara - 2023

☒ For Complete Experience List See our Website www.birawa.co.id ---About us ---Experience

OUR
CLIENTS



OUR
CLIENTS





ENERGY-EXCITEMENT-EXCELLENCE

WE DELIVER QUALITY SERVICE SOLUTION

IMPROVING INDUSTRIES ONE JOB AT A TIME



2023

INSIGNIA PERSONNEL



Technical Engineering Services
Manpower Supply



PT. BIRAWA ADHI PRATAMA



2023



Head Office:
Talavera office park, 28th Floor Jl.Tb.Simatupang
Kav.22-26, South Jakarta
Indonesia. 12430 | +62-021-7599-9962



Operation Office
Perkantoran Plaza Ciputat Mas Blok D/C
Jl. IR.H. Juanda Rempoa Ciputat
Tangerang Selatan

info@birawa.co.id

www.birawa.co.id