

E- CATALOGUE

Concierge Uniforms

Crestwell  Attire
Sustainable Designer Hotel Uniform

WWW.CRESTWELLATTIRE.COM



ABOUT US

Crestwell Attire (A division of Infinity Innovation) is at the intersection of digital innovation and eco-centric fashion, where 50 years of collective expertise shapes the future of uniforms. Our AI-driven cutting technology ensures precision and a personalized touch, while our vertical integration makes the process cost-effective and supremely flexible, keeping your branding sharp and on point.

Rooted in our DNA is a commitment to ESG principles; every piece we craft is born from recycled, antimicrobial (C-Force) and sustainable materials, and making our collection not just a choice but a statement of environmental dedication. We don't just create uniforms; we're sculpting a movement of responsible luxury, where every fiber represents our ethos for a greener earth.



Crestwell  Attire

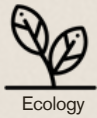
Sustainable Designer Hotel Uniform

Sustainable Fabric Options



○ BAMBOO

Soft, breathable, and moisture-wicking natural textile made from bamboo grass pulp. It's hypoallergenic, offers UV protection, and has antimicrobial properties. It's an eco-friendly choice, as bamboo is renewable, fast-growing, and requires fewer resources compared to other crops.



Ecology



Cool in Summer
Warm in Winter



Antibacterial

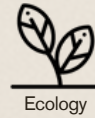


UV Protection

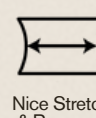


○ CORN (SORONA)

A renewable polymer derived from corn, offering eco-friendly production. It provides superior comfort, flexibility, and durability. With excellent shape retention and resistance to fading, pilling, and wrinkling, it's a sustainable and long-lasting choice for clothing.



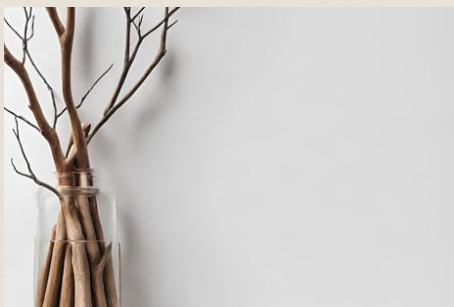
Ecology



Nice Stretch
& Recovery



Wrinkle Free



○ WOOD (LYOCELL)

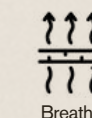
A soft, breathable fabric made from eucalyptus tree pulp. It's eco-friendly, with a closed-loop production system that recycles water and solvents. Biodegradable and compostable, lyocell is a sustainable choice for clothing and textiles.



Ecology



Silky Soft



Breathable



○ PLASTIC BOTTLE

Recycled polyester fabric is an eco-friendly alternative to traditional polyester. Made from recycled plastic bottles and post-consumer waste, it reduces landfill and ocean plastic while decreasing reliance on petroleum-based materials. Cost-effective and sustainable.



Recycle



Durable



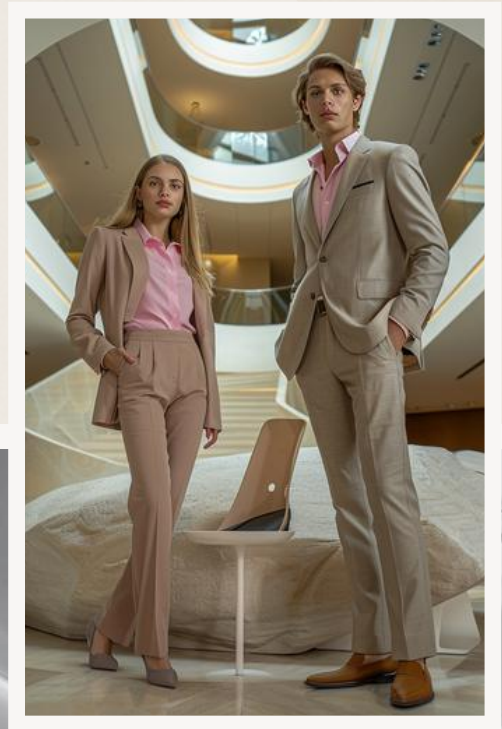
UPCYCLING FABRIC

from OLD GARMENT

The Billie System is an innovative solution that addresses the environmental impact of textile waste by utilizing a waterless recycling process. Unlike traditional methods, it does not consume water or produce chemical waste. The system collects old garments and upcycles them into yarn, which is then used to create new products. By repurposing textile waste, the Billie System promotes sustainability and reduces the need for virgin materials, contributing to a more environmentally friendly approach to textile recycling.



FUTURISTIC ELEGANCE





BOHEMIAN ECLECTIC



MINIMALIST ZEN



COASTAL RETREAT





ART DECO GLAMOUR





RETRO VINTAGE



URBAN JUNGLE





MODERN RUSTIC





SCANDINAVIAN SIMPLICITY

CONTACTS



@crestwell.attire



Crestwell Attire



Crestwell Attire



crestwell.attire@infinityinnovation.co



www.crestwellattire.com

