

Winchelsea



Price \$1
Star

Your Weekly Community Newspaper

Since 1977

Vol 46 Ed 3

Tuesday 31 January 2023

winchelseastar.org.au



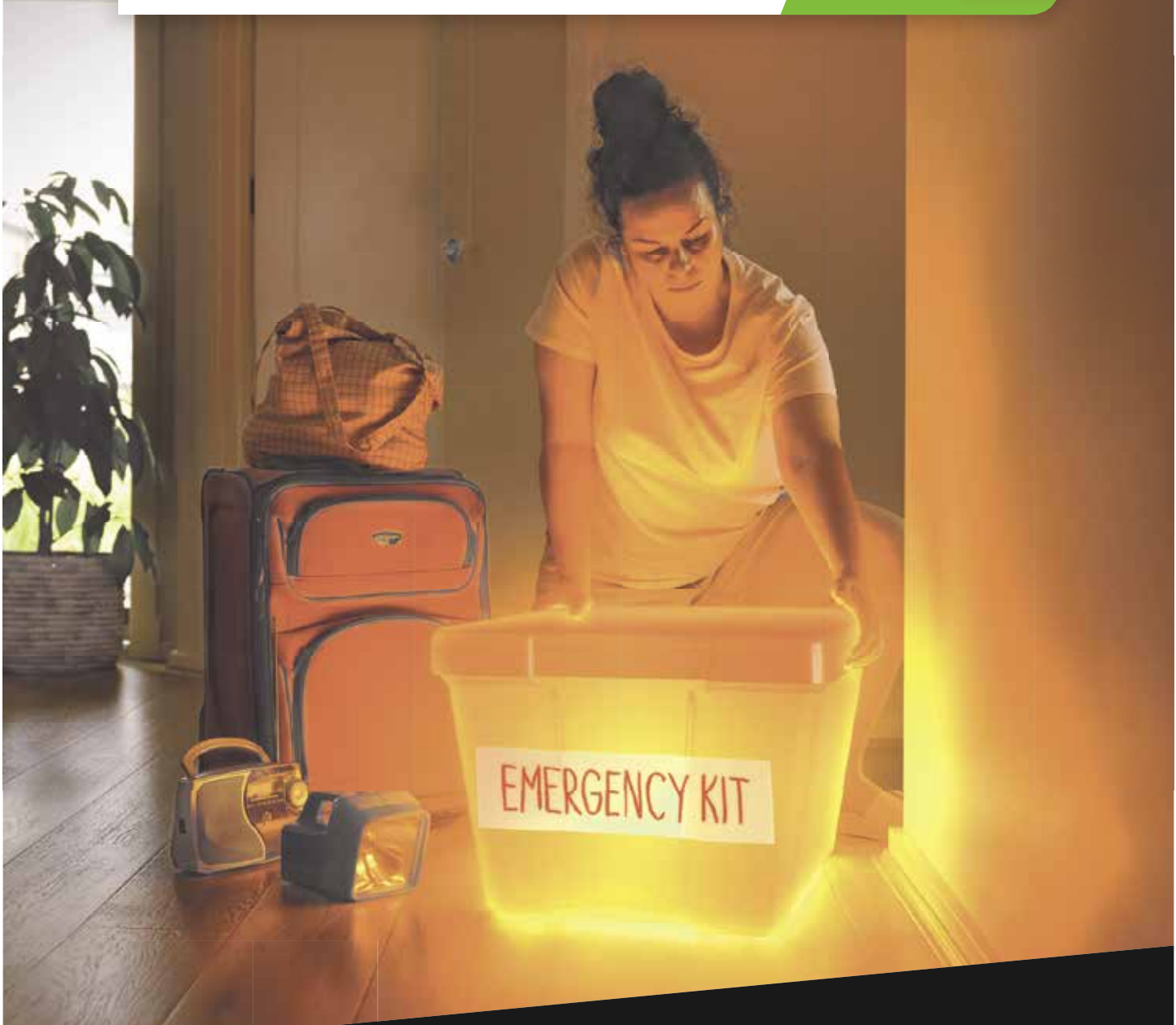
Community gathers for Pilk Purriyn truth-telling led by Wadawurrung Traditional Owners

More page 17



KNOW THE COLOURS

TAKE THE ACTIONS TO SURVIVE



Across Australia, the Fire Danger Rating system has changed. Using real-time scientific data, it now gives you a more accurate rating of the risk level if a fire was to start in your area. Each colour represents the actions you need to take to stay safe. If it's orange, the fire risk is Extreme, so you need to take action now and be ready to go. The safest option is to leave early.

Plan. Act. Survive.

For more information on the new simpler and smarter Fire Danger Ratings, search **Fire Danger Ratings**.

Authorised by the Victorian Government, 1 Treasury Place, Melbourne





Lions Australia Day

Winchelsea Lions celebrated Australia Day in fine old traditional Aussie style with egg and bacon rolls and wonderful entertainment by Don Fisher "The human jukebox"

It was a perfect morning and lots of Winchelsea folk came along to mark the occasion, many thanks to you all for your generous donations. It was lovely to see our councillor Heather Wellington looking so well and enjoying the festivities.

The only thing missing was the flag on the flagpole!!!! Can we blame the corellas????

Didn't matter because we brought our own. Once again thank you Winchelsea and see you next year.



Estia Health is a Residential Aged Care provider and has availability for both respite and permanent care at our homes in Bannockburn, Grovedale and Leopold. Call Gabby on 0419 336 841 if you would like to have a look at any of our wonderful homes and find out more details on Aged Care.





An eventful grants program set to open

Event organisers are invited to apply for Surf Coast Shire Council's Event Grants Program, with successful recipients to contribute to the positive impact of local events.

Grants are available for events to be held between 1 July 2023 and 30 June 2024. There are three categories:

- Community Events: grants up to \$3,000.
- Boutique, Creative and Special Focus Events: grants up to \$7,500.
- Tourism Events: grants up to \$10,000.

Councillor Libby Stapleton encouraged event organisers to consider applying for a grant.

"Whether your event is big or small, we know that funding assistance is welcomed," she said.

Applications open 1 February and close 28 February. All applicants must speak with a Council events officer prior to submitting an application. To arrange an appointment, please email eventgrants@surfcoast.vic.gov.au or call 03 5261 0600.

For more information, including the Event Grants Guidelines and online application form, visit surfcoastevents.com.au.

Below: Aireys as a Dark Sky Location is a previous event grant recipient. Image credit: MICHAEL VAN BERKEL



Winchelsea Hospital Auxiliary

Auxiliary members please note the February meeting has been cancelled

OP SHOP DONATIONS

Donations will be received at the Op Shop from the 1st weekend in February, on Saturdays and Mondays 10am till 2pm.

Please note: no furniture accepted and other goods will be accepted at the discretion of the Auxiliary as per Human Resources for Health guidelines.

The Hospital Auxiliary would like to thank the community for their ongoing support.

Ingrid Rowe (Sec)

Winchelsea Playground

BACK FOR 2023
ON
FEB 9TH FROM 10AM

ANGLICAN CHURCH,
CNR BARWON TCE &
HOPKINS STREET

\$5 PER FAMILY
BRING A PIECE OF FRUIT TO
SHARE

Memories of Haydn Shinnars

Over the years Haydn was involved in so many things, such as :

Probus Club of Winchelsea

Masonic Lodge

Meals on Wheels

Winchelsea Lions

Winchelsea Star

Visitor Information Centre

Morning Melodies

Church Vestry

Senior Citizens

Catering for Belmont Senior Citizens

Catering for St Thomas Cof E

Help caterers from Horticultural Society

Judge for Horticultural Society when required

Plant stall for Horticultural Society

Volunteer at Barwon Park and also catering for afternoon teas etc

Catering for Winchelsea Cricket Club

Catering for 28th Flight Air Training Corps events.

Wormbete's in house chef for years for the Blakely Family

Bottom Hotel for Lorna and Bob Stephens as the chef

In house chef at Murdeduke for years

In his younger days he was a shearers' cook in rural Victoria and outback NSW

In the very beginning he made biscuits for Darryl Lea in Geelong.

Thank you everyone who sent cards and phone calls. We the family feel the support of everyone. Thank you all so much.

Very grateful thanks to everyone who came to Seniors and gave plates of food etc. Also to the CWA girls who organised the kitchen and also prepared extra food and then the big clean up afterwards.

Dear Haydn was a much loved husband of Jean, father of Ben, grandfather of Katel and Logan. Brother to Eunice (dec) Max (dec) Geoff (dec) Cathie, Gary and Lynette.

We all miss you deeply.

This was Haydn's Grandchildrens beautiful eulogy at his funeral

What "Pop" meant to us

From the day we were born Nan and Pop shared in our upbringing.

Pop would wake early every morning to make our breakfast and prepare our school lunches whilst our parents went to work.

He or Nan would also drop us off and pick us up every day until my brother and I learnt to ride our bikes to school.

Logan and I would always look forward to sleeping over at Pop's to wake early for pikelets and then go to Sunday School while he went to Church.

Pop was a fantastic cook. On Sunday night he would make delicious roasts with all the trimmings.

Cauliflower and cheese, roast potatoes, pumpkin, peas and carrots mixed with honey and sesame seeds. We also loved his pavlovas and trifles.

Nothing was too much for him in the kitchen. He would use every pot, pan, knife, fork and spoon to make wonderful meals and always made sure to use the good dinner service.

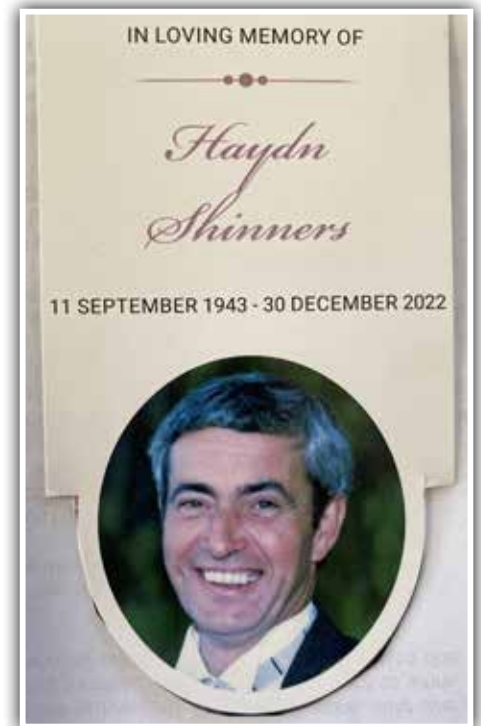
Of course Nan would have to do the dishes but we always laughed and had fun putting everything away.

After almost every dinner we would all participate in family games night. When we were young we played tiddly-winks or skip-bo, then as I got older Pop taught me games like cribbage, 500 and rummikub. Monopoly however was a game that always came to grief.

We even disagreed on the rules once and had to get a barrister to intervene but even he refused to give a ruling and therefore the game was banned for life. It is still a very sore point to this day.

One of Pop's favourite pastimes was his beloved Senior Citizens. Following in his Mother's footsteps he would faithfully go every Wednesday and Friday afternoon and play either carpet bowls or euchre.

He has been President of the Senior Citizens for 10 years or so and when he was well he would cook lunches on



Friday's for everyone. We just couldn't keep him out of the kitchen wherever he was.

From 1976 Pop became the Catering Manager at the Geelong Grammar School Timbertop Campus where he catered for 300 students and staff 3 times a day for 4 terms over a year.

"Shinnars Dinners" was the catchphrase the students would use. He Nan and Dad lived there for 15 years, you do the maths, how many meals would he have made in that time?

Lastly his greatest pride and joy was his garden and maintaining his Mother's rose garden, which currently looks better than it ever has.

In tribute to his hard work we have dried the rose petals from the garden for those coming to the graveside to disperse.

Pop was always generous with his time and his talents. He will be greatly missed by many.

We love you Pop.

Time to hang up your tea towel and enjoy your well earned rest.

Winchelsea Star

Articles are most welcome and must carry the name and address of the sender.

Weekly deadline is 5pm Friday.

Copy for sports results and weekend events is Sunday 6pm (4pm for hard-copy articles/results left at IGA) unless by prior arrangement.

Copy should be emailed to news@winchelseastar.org.au or left at IGA Supermarket.

The Winchelsea Star reserves the right to edit or not publish any article.

Views expressed are not necessarily those of the Winchelsea Star or its Committee.

500 online subscribers, 250 copies printed for outlets around Winchelsea.

Free subscription to digital version at winchelseastar.org.au

© Winchelsea Star Org. Inc.
All rights reserved.

Winchelsea Star Organisation Inc.
Reg. No. A1479, ABN: 57 207 411 958
winchelseastar.org.au
Po Box 5, Winchelsea, Vic, 3241

Editors:

Cerrie Fogan, Yvonne Stevens
Judy Cameron
editor@winchelseastar.org.au

Advertising:

Sasha Gauntlett and Neil McInnes
advertising@winchelseastar.org.au
0408 102 802

Layout/Sub Editors:

Susan Corby, Charles Corby
Stuart Fountain
production@winchelseastar.org.au

Committee

President: Mick O'Mara
president@winchelseastar.org.au

Treasurer: Cathy Cheadle
treasurer@winchelseastar.org.au

Secretary: Tony Phelps
secretary@winchelseastar.org.au

Committee Members:
Linda Carter

Printer: Mud Group
Website: Winch Websites





**WINCHELSEA
CONCRETING**

· Driveways · Sheds · Decorative Concrete · Raft Slabs

Robert Murphy
☎ 0438 235 237
✉ winchelseaconcreting@outlook.com





mde

2023

**DANCE
ENROLMENTS
NOW OPEN!**

Winchelsea dance
classes commence
1st February 2023

REGISTER NOW

www.melsdancecentral.com.au

Pre-School - Adults
Beginner - Advanced Levels

All About

Mowers & Chainsaws

Repairs to all makes and models of ride on mowers, domestic mowers, pumps, chainsaws, brushcutters and small engines.

Trading Hours: Mon - Fri 8am - 5pm Saturday 8am - 12 noon

5267 2266

Cnr Princes Hwy & Lennox St Winchelsea
www.allaboutmowers.com.au
accounts@allaboutmowers.com.au







One of Winchelsea's beautiful history periods

The Star has decided to publish an article that first appeared in *The Age* a couple of years back. It was written by Barney Zwartz, *The Age's* music journalist, and was about Mark Papworth. Mark arrived in Winchelsea with his family when his father, Ian, was appointed United Church minister for Winchelsea.

At that stage Winchelsea School had started a music program that included a concert band. Winch would have been one of an extremely small number of schools in Australia that ran a concert band for primary kids. The idea that a school the size of Winch could run a concert band program came from Brian Blackett. Brian had been a member of the Casterton brass band from a very early age and was convinced that he could get a concert band up and running using Middle and Senior Primary kids.

The first Bandfest we ran was simply magic. The Leisuretime Centre was simply packed. The Navy Band was superb. Our kids were great too. So many kids benefited from the band program and some, such as Mark Papworth, went on to become professional musicians.

However, all things come to an end. Brian was offered a senior music education position in Queensland, which he accepted. Without his leadership the Winchelsea band program gradually wound down and folded up.

It was a great pity!

April 2020

Wagner reinterpreted, bold as brass

Barney Zwartz has written an article in *The Age* and *SMH* about horn player Mark Papworth's Wagner project. *Siegfried's Story*, a CD of 12 scenes from the *Ring* adapted for the highly unusual combination of horn, tuba and piano, recording under the name *Bonza Brass*.

A Melbourne tram driver, Mark Papworth, has launched one of the most original and intriguing Wagner projects in years. Actually, although Papworth does drive trams for



financial security and because the hours suit his many projects, he is a highly accomplished musician who studied in Melbourne, Perth and the United States for years and is equally at home on three very different types of French horn: baroque, natural and modern.

Papworth fell in love with Wagner's four-opera Ring cycle at 16 when he heard Georg Solti's famous recordings, and "it's blown my mind ever since".

*In 2011, after studying at the University of Indiana, he returned to Melbourne and began adapting sections of the Ring for French horn and piano. In 2016, when he had eight pieces, tuba player Per Forsberg expressed an interest. So Papworth reworked all eight, giving the "meaty bass parts" to the tuba, and added four new movements. The fruit is *Siegfried's Story*, a CD of 12 scenes from the *Ring* adapted for the highly unusual combination of horn, tuba and piano (*Rosa Scaffidi*), recording under the name *Bonza Brass*.*

The biggest challenge, Papworth says, was working out how to fit parts written for one of the biggest orchestras ever into three instruments. "Eventually I decided to give all the crazy string writing to the piano, the melody to the horn and a nice strong bass line to the tuba. The piano was good for filling in all the blanks." But he ensures that the tuba has quite a few moments in the sun. Sometimes the combination is highly effective, such as the creation of the world in the prelude to the first opera, but

just occasionally one misses the heft that comes with an orchestra of 100. Still, it is always fascinating.

The trio wanted to record the performance for their own pleasure, and approached Melbourne-based classical label Move, where CEO Martin Wright was sufficiently intrigued that he offered to produce the CD and issue it. It came out earlier this year, and Papworth hopes it may be an accessible way in for newcomers to Wagner.

Papworth started playing the horn extraordinarily young. He went to one of the few state primary schools that had an orchestra and recalls coming home in tears in Grade 3 because he wanted to play the flute but the conductor insisted he had to learn the horn. "So my father went to his cupboard, pulled out an old instrument, and said 'this is a French horn and this is how you play it'. His aunty gave it to him when he was a teenager, and my father didn't believe in throwing out musical instruments, so he carried it around with him for 30 years," Papworth recalls. It turned out to be a Czech horn from the 1920s, itself now a historic instrument.

*Bonza Brass is now working on another CD of Papworth's Wagner arrangements – *Die Meistersinger*, *Parsifal* and the *Wesendonck Lieder*.*

*This article by Barney Zwartz was originally published in *The Age* and *Sydney Morning Herald* on 28 April 2020.*

Free Community Service Advertisements

Services and Activities in Winchelsea



TRAIN SERVICES

To Geelong

Mon - Fri

6:41 am, 7:59am, 11:34am,
2:01pm, 7:37pm

Sat and Sun

9:35am, 1:36pm, 7:18pm

To Warrnambool:

Mon - Fri

9:29am, 2:56pm, (to Colac
5:27pm), 6:45pm, 8:53pm

Sat and Sun

8:47am, 2:49pm, 8:37pm

Country Women's Association



7pm Second Wednesday of Month
Winchelsea Senior Citizens' Hall

Bus to the Hub

For reservations on the weekly bus
to the Eastern Reserve Hub,
please phone 52671202.

Surf Coast Mobile Library

Surf Coast Mobile Library
parked in Hesse Street
(outside Shire Hall) on Fridays
between 2:00 and 5:00pm
unless it is a Public Holiday.
Hesse St, Fridays, 2pm-5pm

Winchelsea Taxi

0429 672 888 or 5267 2888

Wheelchair accessible
10 seater bus available.

Winchelsea SES

Meeting and training
2nd Wednesday

Training 4th Wednesday

Visitors and inquiries welcome

0408 102 802

Winchelsea and District Combined Probus Club



Meets 1st Monday of the

month at 10am. Senior
Citizens Rooms, Harding
St, Winchelsea. New
members always
welcome.

Enquiries Linda 0439 817 263.

Body Therapy Classes

Yoga, Pilates, Qi Gung and Mindfulness Meditation Practices

Tuesdays 6.15pm \$13 Cash
Catholic Church Hall -School Term Only

Dr Haidee Benning, 0428 177 964

Winchelsea Playgroup

Every second Thursday 10am-12pm
St Thomas Anglican Church Hall
cnr Barwon Tce and Hopkins St, Winchelsea
Contact: Melissa 0456181268
Facebook - Winchelsea Playgroup 2019
New families welcome

Winchelsea Girl Guides

Our Unit meets at the Catholic Church
Hall, Harding St Winchelsea
each Monday 4.30pm-6pm
All girls 5yrs- 15yrs Welcome!
Contact Yvonne Orchard 0448 672 630
or Bonnie Stokes 0401 386 274

1st Modewarre and Winchelsea Scout Group

Joey's: Tuesdays of school term 5-6pm
Cubs: Mondays of school term 6:30-8pm
Scouts: Tuesdays of school term
6:30-8:30pm
All at Modewarre Hall, Cape Otway Rd
Venturers: Wed at Walton's Rd Venturer
Den
Contact Marie McPadden 0409 330147

Winchelsea Transfer Station

Opening Hours

Monday	Closed
Tuesday	2pm-4pm
Wednesday	Closed
Thursday	2pm - 4pm
Friday	Closed
Saturday	1.30pm - 3.30pm
Sunday	9.30am - 12.30pm

55 Cressy Road, Winchelsea.

Accepts household garbage,
mixed commercial and industrial waste,
mixed construction and demolition waste.
Accepts recyclable materials.
Accepts one recycle bin two waste bins.
Does NOT accept clean fill.

Royalist councillor supports reconciliation

As a former member of the Geelong and District Australia Day Committee I support celebrating Australia Day.

However given the disapproval of the 26th of January from different groups in society and principally from First

Nations People I am growing more sympathetic to the date being changed. The last Friday in January seems to be the most logical option and future Australia Day events would include a morning of acknowledgment and reflection of Aboriginal and Torres Strait Islander history.

I attended the Pilk Purriyn-Truth Telling event on the morning of Australia Day and a Citizenship ceremony at the Surf Coast Shire civic building which were both very moving.

Cr Adrian Schonfelder

Below: L-R: Cr Adrian Schonfelder, Corrina Eccles Wadawurrung Elder and Cr Rose Hodge



Plasterer & Painter

Daryl Hecker

Domestic & Commercial
Renovations & Repairs
Suspended Ceilings
Dustless Sanding
New Homes
Extensions



Ph 0419 194 799

Antique Repairs

By **Doug Burns** est. 1976

- All Furniture
- French polishing
- Carving
- Veneering
- Wood Turning
- Porcelain



Unusual Requests Welcome

180 Barwon Terrace, Winchelsea

0428 672 704

B & H Modifications

Bob Verity

55 Stephenson Road
Winchelsea 3241
Ph: 5267 2467
Mobile: 0411 610 678



Industrial Sewing Machine Work

Caravan Annexes, Trailer Covers,
Shade Sails, Alterations and
Repairs to
Camping and Tents.
Clear PVC Blinds
Repairs to CLEAN Horse Rugs
No Job Too Small
Email: bobverity@southernphone.com.au

Winchelsea Churches

Winchelsea Uniting Church

Hesse St, Winchelsea 3241
uca.winchelsea@gmail.com
0475 777 301
Services 9.30am Sundays

St John's Catholic Church

Harding St, Winchelsea 3241
Father Joseph Panackal
0404598558

St Thomas' Anglican Church

Barwon Tce, Winchelsea
Rev'd A. Lynne Clarke
stthomaswac@gmail.com
0477 672 042

All the churches of Winchelsea are happy to welcome any who would like to join them for worship.

St Thomas' Anglican Church

in Barwon Terrace.
St Thomas Anglican Church meets for worship at 10.00 am every Sunday
Phone Rev Lynne Clarke 0477 672 042
stthomaswac@gmail.com

Winchelsea Uniting Church

in Hesse Street meets at 9.30 am every Sunday morning.
Worship is followed by morning tea.
Phone 0475 777 301
uca.winchelsea@gmail.com

St John's Catholic Church

In Harding Street. Mass dates and times: Feb. 4,11,18,25 at 6pm – Feb 22 Ash Wed at 8am
Please contact Anita, 0409 432 833 or Father Joseph Panackal, 0404 598 558

Thought for the Week

"In the midst of suffering, trust that either your burden will lighten or you'll receive the strength to endure.

The way to get beyond suffering is to go through it with love in your heart, and God at your side."

John Bader
Accredited Lay Preacher

Knuckey's Winchelsea Ph: 5267 2011

Knuckey's have in stock a complete range of batteries to suit tractor, heavy machinery, cars, utes

The largest range of the best oil for your vehicles—**CASTROL**—*'when only the best will do'*

The largest range of V belts.
A, B, C, D M Sections
Bolts and nuts for all occasions
Steel cut to size

DownRyte Excavations

- Excavations
- Drilling and Piling
- Rock Placement
- Tree and Stump Removal



Sean Hunwick
Mobile: 0409 447 288
Email: downryte@activ8.net.au

**direct
TEMPORARY
FENCING**

FOR HIRE - SUPPLIED & ERECTED - 7 DAYS
GEELONG - BELLARINE - COLAC - SURF COAST
PHONE CAM 0417 310 800

AFS BOOKKEEPING

"Your local bookkeeper"



Bookkeeping
Administration
Payroll
BAS Services
Xero / Myob
Reckon / Quickbooks
Registered BAS Agent

Angelique Snetselaar
0456 077 485
info@afsbookkeeping.com.au
www.afsbookkeeping.com.au



Women's Workshop

Any ladies out there who are interested in learning some workshop and home maintenance skills?

The Winch Mens' Shed are running free workshops starting in August. Let us know what you would like to learn and what days and times are most suitable. We can tailor the workshop to cover what is most requested and on days that suit most.

If you are interested in attending please contact the Men's Shed on 0407839139 (Ray) or email winchmenshed@gmail.com



Pet Therapy

Christmas may be over and done for another year but these two little ponies, lil Stormy and Miss Milly, will bring a smile too your face, just as they did for Hesse Rural Health residents and Winchelsea Hospital adult activity group.

Tracey from Hollymist got her girls dressed and ready to spread some Christmas cheer and love amongst the residents and guests. They were so well behaved, gentle and patient. The smiles they bought to so many faces shows the benefits of pet therapy. Thankyou Tracey for sharing your girls, and your time and effort to make them shine. I know personally how much my dad loved meeting them and the snuggles they gave!



Streets of Winchelsea

Meyler Street



Henry Meyler born in 1825 Dublin, Ireland and was the Winchelsea doctor approx. 1858-1889 before Dr Eddie who was here from approximately 1899-1930.

Dr Meyler died in Winchelsea on 11/5/1889. He married Elizabeth Fender née Stirling in 1868.



Photos are from the Winchelsea Historical Society and we are happy to accept any donations of old local photos and family history.




Staircases | Feature Trusses | Tiling
New Homes | Extensions | Renovations

Call Adam on 0412 234 306




@sheoak_constructions
f Sheoak Constructions



One stop auto shop
17 Alsop Drive

- ❑ LOG BOOK SERVICE
- ❑ AUTO ELECTRICAL
- ❑ TOWING
- ❑ AIR CONDITIONING
- ❑ CLUTCH & BRAKES
- ❑ TYRES
- ❑ WHEEL ALIGNMENT
- ❑ BATTERIES

CAR, TRUCK REPAIRS & Roadworthys

PH: 5267 3001

Mob: 0417 137 457



R.A.K. DAVIS & SONS

CARTAGE CONTRACTORS

WINCHELSEA

SUPPLIER OF ALL QUARRY MATERIALS, TRUCK HIRE
CARTAGE OF GRAIN, LIME, GYPSUM & SUPER
LANDSCAPE & GARDEN SUPPLIES

56 WILLIS ST, WINCHELSEA
Ph – 5267 2094
Ryan – 0438 672 281
Email: rakdavis@bigpond.com



5234 6585 0417 385 984
For all your septic tank, grease traps
and interceptor pits servicing.
Locally owned and operated

Green Lead Electrical
Connecting you to a greener future
NSIC 23018

0467 097 101 

Servicing Geelong & the Surf Coast

Specialising in all residential
electrical work including:

- Switch board & lighting upgrades
- Outdoor lighting
- Electrical safety checks
- Energy efficient LED lighting
- Ceiling sweep fans & ventilation
- Energy saving advice

Phone Martin Wilkinson:
0467 097 101
greenlead@outlook.com

132268-OC18-14

Big on products. Big on service.

And big on local banking

Find out more. Call us on 5267 3189 or search Bendigo Bank Winchelsea & District.



BANK
LOCAL

B Bendigo Bank

Community Bank
Winchelsea & District



For Sale

2 roller blinds to fit windows
180 cm wide x 180 deep.
\$50 each. Ph 0439817263



Singing Group - Shire Hall

This is an invitation to anyone who wants to sing. Not just on your own, but with others.

Every Wednesday night (starting 1st February), 4.45 - 6.00pm

The cost is as follows:
10 weeks - \$70
concession - \$50 (10 weeks)
Children under 16 - free

You are also able to attend on a weekly basis - \$10 a session.

Email your registration to reception@winchhouse.org.au

This is an inclusive group that welcomes anyone who wants to experience the joy of singing

HESSE RURAL HEALTH ANNUAL GENERAL MEETING

Hesse Rural Health's 2022 Annual General Meeting will be held at The Hub, Eastern Reserve, Winchelsea and via Zoom on Tuesday 21st February, 2023 at 6pm.

Please contact Hesse on (03) 5267 1200 or reception@hesse.vic.gov.au to RSVP and receive the remote link invitation.

BUSINESS:

To receive the report of the Board of Directors and the audited Statements of Accounts for the year ended 30 June 2022.



Pixie Wash
Mobile Doggie Care
Dogs up to 20kg
Pixie Heath
0417 586 080

STORAGE KING

SIMPLE STORAGE SOLUTIONS

- Personal & Business Storage
- Boat, Caravan & Vehicle Storage
- High Security Premises
- Individually Alarmed Units
- Electric Gate Access
- 7 Day Access & CCTV

YOUR STORAGE PROBLEMS SOLVED

5267 3116
6 ALSOP DRIVE, WINCHELSEA 3241

LIONS CLUB OF WINCHELSEA

PAPER RECYCLING

Paper depot rear of Senior Citizens Rooms Harding Street
NEWSPAPERS, MAGAZINES, PHONE BOOKS WANTED

SHEEP POO FOR SALE

\$5 per bag.
Available at paper depot rear of Senior Citizens Rooms Harding Street
most mornings between 10 and 12
or contact David on 0410 029 857.

RAISING FUNDS FOR OUR TOWN & DISTRICT
5267 2011 or 0408 520 606

GREAT Bundle Deal on Bosch Hot Water... FROM ELGAS

Buy any Bosch Bluetooth continuous flow hot water model - 16Litre, 20Litre or 26Litre and **Receive \$100* in Elgas bonus LPG gas credits**

*For more details: www.elgas.com.au/appliances/bosch-optimflow-16-20-26-lpg-bundle-sale

AND... for new customers, an additional \$80 WORTH OF LPG GAS CREDITS when you open a new LPG Gas account with Elgas**

**Further details can be viewed at www.elgas.com.au

Ask about the Elgas Easy Payment Plan - 12 months interest free*** on selected LPG appliances
***Further details can be viewed at: www.elgas.com.au/epp

Automatic tanker gas bottle refill OR gas bottle exchange refill is available for home or business....
Call today or visit our website for our many customer benefits and latest offers

131 161
www.elgas.com.au

ELGAS

©2019 ELGAS LTD.

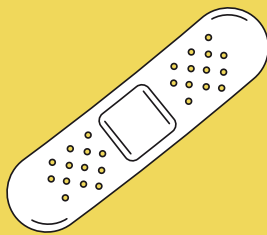
Scott McDonald
0423 413 829

S.J.R AUTOMOTIVE
ARN 942 483 848 397
13 ALSOP DRIVE, WINCHELSEA, VIC 3241



THIS SUMMER, IF WE DON'T GET COVID WE CAN'T SPREAD COVID.

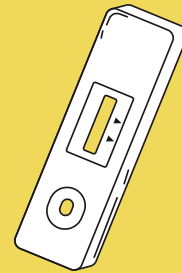
Staying well this summer can be as easy as



staying up to date with your booster vaccine.



talking to your doctor: if you are at risk of becoming unwell, you may be eligible for COVID medicines.



always testing with a RAT if you feel unwell.



staying home if you feel unwell.



catching up outdoors or in places with open doors and windows.



wearing a mask when it's crowded indoors.

[Q coronavirus.vic.gov.au](https://coronavirus.vic.gov.au)

STAY WELL THIS SUMMER

Know the three and survive at sea

Boaters and paddlers are being urged to Know the three when out at sea when out on the water this summer.

Safe Transport Victoria's latest boating safety campaign asks boaters and paddlers to follow three simple safety rules:

- Wear, maintain and service a lifejacket,
- carry at least two waterproof communications devices,
- and check the weather before and after setting out.

Wearing a correctly fitted lifejacket gives someone who falls into the water time to get back on board or call for help. A waterproof communications device is needed to raise the alarm once someone is in the water or if the boat capsizes. It's important to always keep an eye on the weather forecast as conditions can change quickly.

There were seven boating-related fatalities in Victoria between July 2021 and June 2022. Boating related fatalities recorded over the past decade were from a range of hazards, including drowning, fire, collisions, gas inhalation, and other boating accidents.

Over the past ten years, nearly four out of five people who drowned while boating did not wear a lifejacket or wore an incorrectly-fitted lifejacket.

Male boaters aged between 35 and 60 are the largest at-risk group and are the primary audience for the campaign.

To help spread the Know the three when out at sea message, Safe Transport Victoria will run boating safety workshops at high traffic areas in regional Victoria throughout summer and officers will engage with boaters at boat ramps

The Know the three when out at sea campaign will run on radio, social media and online throughout the summer.

Winchelsea Girl Guides are seeking female adult volunteers

Interested in joining an enthusiastic, self-motivated team working with girls, 5-15yrs in Winchelsea. Training provided free. Membership of a world

wide organisation, travel opportunities, and friendships. Help us to provide leadership development opportunities for girls and young women, as well as

promoting fun and friendship. Ready to commence in 1st Term 2023.

Phone Yvonne 0448 673 630 or Bonnie 0401 386 274



mainly music
est. 1990

Fun, Interactive music sessions for pre-school children (0-4 y.o.) and parents/caregivers

When: Mondays from 10 to 11 am (runs during school terms)

**Where: St Thomas' Hall
25 Barwon Tce.**

To Enquire ring: 0407838256



2023 is our 80th year!!

New members are welcome –
Actors, directors, back stage, make-up artists, publicity

to present humorous Australian drama 'Cosi' in May this year at COPACC

Read 'Cosi' with us: Wed 8 Feb at 7pm

Auditions: Sunday 12 Feb from 2pm and Monday 13 Feb from 6pm

Book your spot with Ros ph: 0417 597 186

The Colac Players Shed: 30 Wilson St, Colac

Water Delivery

WAZZA'S WATER CARTAGE

Stainless Tanker Up to 22,000 ltr loads
Barwon Water Registered

Domestic & Rural Water Supplies

Call Wazza
Mob: 0428 877 260
Email: wazza@wazzas.com.au Web: wazzaswater.com



Kyeema Rural Fencing Pty. Ltd.


Jason Armstrong & Jay Hawker

1080 Prices Lane, Ombesley, Victoria, 3241

0419 565085 (Jason)
0416 585817 (Jay)

kyeemaliam@kyeemaliam.com.au

Also incorporating domestic and rural tree trimming services.



Café La Hoot

have you tried 'owl' coffee?

1 willis st cafelahoot@gmail.com 0407 528 999



MRP Steelworx
 Matthew Partridge
 p 0418 672 334
 e mrpsteelworx@yahoo.com.au

Welding Service

- Onsite welding
- Farm maintenance
- Farm machinery & equipment repairs
- Cattle & sheep yards
- Custom built trailers
- Supply & install gates

NO MATTER WHAT YOUR PROBLEM, DODDS ELECTRIX CAN DEFUSE THE SITUATION.

RURAL, INDUSTRIAL, COMMERCIAL. DOMESTIC
 PHONE 0438 887 360
 EMAIL: DODDSY@FASTMAIL.FM
 PO BOX 36 BIRREGURRA, VICTORIA 324
 REC: 17520 ABN: 64 581 250 880



5234 6585 0417 385 984
 For all your domestic & stock water.
 Also available for road and civil construction
 Local owned and operated.

OZ TREES NURSERY & TREE PLANTING SERVICES

- Affordable seedlings—over 200 species
- Complete plantation service—farm forestry, shelter, aesthetics
- Deep ripping & mound ploughing. Rotary bed forming
- Our experienced staff will help you select species for your site conditions and needs


Also available—tree planting tools, milk cartons, plastic tree guards & bamboo stakes

569 Warrowie Rd. Colac
 P: 5233 6280 F: 5233 6393
 E: info@oztrees.com.au
 W: www.oztrees.com.au
 Open Monday—Friday
 9am—4:30pm



Phone OzTrees for professional advice,

TRENCHES & HOLES PTY LTD.



PHILLIP ROBERTSON
 ☎ 0427 672 945
WINCHELSEA

- General Earth Works
- Driveways
- Trencher
- Kanga Loader
- Grader
- Excavator Work (3.5 & 6.5 Tonne)
- Tip Truck
- Rock Breaker
- Post Holes & Shed Footings

A.B.N 74006896898



WEBSITES

GROW business
 INCREASE reach
 SAVE time



Find out what a website could do for you
winchwebsites.com.au
 04 887766 20

CONCRETER
 Alister Aitken

No job to big or small

- Driveways - Carports - Crossovers - Footpaths - Sheds Slabs - Colored Concrete - Concrete sealing - Exposed Aggregate - & more -

Call or text for a no obligation free quote

Servicing our local Winchelsea & Surrounding Areas

alaitken.aa@gmail.com or Alister - 0411 871 950
 A.B.N 47 228 574 460



St Vincent de Paul Society
good works

Covering Meredith, Bannockburn, Anakie, Lethbridge, Inverleigh, Teesdale, Shelford, Elaine and Winchelsea

52219170

Monday - Friday 9am to 2 pm
<http://www.vinnies.org.au>

A caring Catholic organisation offering "a hand up" to all people in need.

Community gathers for Pilk Purriyn truth-telling led by Wadawurrung Traditional Owners

Up to 2,000 people gathered at Cosy Corner in Torquay on Wadawurrung Country at sunrise on Thursday 26 January for the inaugural Pilk Purriyn truth-telling event.

Meaning 'sunrise' in Wadawurrung language, Pilk Purriyn was hosted by Wadawurrung Traditional Owners Aboriginal Corporation in collaboration with the Surf Coast Shire Council.

The event started with a traditional Welcome to Country, and Smoking and Dancing Ceremonies, followed by Wadawurrung Traditional Owners addressing the gathering about the meaning of 26 January for First Nations people. Then, with the rising of the sun on the water, it concluded with a response from State Member for Geelong Christine Couzens, and Surf Coast Shire Council Mayor Cr Liz Pattison.

With four generations of Wadawurrung people present, Pilk Purriyn was an opportunity for members of all communities to come together, gather, deeply listen and reflect on the Country that they are living on.

The event aimed to support the First Nations community by acknowledging the trauma and harm to the First Peoples through colonisation, by recognising the survival, resilience of their people and culture that continues today.

Wadawurrung woman Corrina Eccles said: "As a Wadawurrung woman it was very brave to hold this event knowing this is something not all people support but if we are going to move forward we need a voice today that our ancestors and Elders were denied."

"For thousands of years Wadawurrung people started their day with the rising of the sun and today we continue that as we conquer a day that is felt heavily

in heart and spirit. It gave us the opportunity for Traditional Owners to stand on our Country to share ceremony and truth-telling with those who choose to not celebrate this day."

"Seeing up to 2,000 people offer their respect and support this morning shows us that people want to see change and are here to listen."

Surf Coast Shire Council Mayor Liz Pattison said: "Pilk Purriyn was an incredibly moving event held on Wadawurrung Country, which helped deepen my understanding of First Nations culture and experience."

"As the Surf Coast Shire Council continues a journey towards Reconciliation with First Nations People, we recognise past wrongs and seek truth, understanding and healing. We want to support Traditional Owners and First Nations People in our community in the spirit of respect, recognition and compassion."



DAVIC AG
CONTRACTING AND EARTHMOVING
 For all your harvesting needs
 Mowing, raking, round bailing, paddock prepping, spreading and sowing
 Call Dave on **0417 579 973** Bambra

52672192 R & K Creative Framing
 for all your framing needs
 free quotes pension discount Ray & Kim Jansen
 specialist in Age & Disability Modifications 10 Witcombe st Winchelsea 3241
 Ray The Home Maintenance HANDYMAN
 abn 47528623482 **0414672192**



Winchelsea Community Facebook pages

What's on in Winchelsea

FLYERS, LOCAL EVENTS, SMALL BUSINESS, PROMOTING WINCHELSEA

facebook.com/WhatsoninWinchelsea

Winchelsea FREE

FREE ONLY

facebook.com/groups/winchelseafree

Winchelsea Community Information AUSTRALIA

POSITIVE DISCUSSION

facebook.com/
groups/207538644446972

Winchelsea Classifieds 3241

FOR SALE ONLY

facebook.com/
groups/216942861684082

Winchelsea Lost and Found

LOST PETS

facebook.com/
groups/768187693217518

Winchelsea Op Shop

facebook.com/
HospitalAuxiliaryOpShopWinchelsea

Winchelsea Tea Rooms (Community Centre)

facebook.com/WinchelseaTeaRooms

Winchelsea Community House

facebook.com/
winchelseacommunityhouse

Winchelsea Coronavirus Community Support Group

facebook.com/
groups/2676957719207927/

The Green Winchelsea Residents

facebook.com/
groups/515322772623126

Growing Winchelsea Inc

facebook.com/growingwinch

Winchelsea Star

winchelseastar.org.au/step/subscribe/

Winchelsea Movie Club

facebook.com/winchelseamovies

Winchelsea Community Market

facebook.com/
winchelseacommunitymarket

Winchelsea Land and River Care Group

facebook.com/envirowinchelsea/

Upper Barwon Landcare Network

facebook.com/UpperBarwonLandcare

Winchelsea & District Historical Society Inc.

facebook.com/
Winchelseaanddistricthistoricalsociety/

Winchelsea Wildlife Shelter

www.winchelseawildlifeshester.com/

SCARS - Surf Coast Animal Rescue Service

facebook.com/
groups/415211698950674

Winchelsea Gardeners

facebook.com/
groups/779878518703025

Winchelsea & District Historical Society

facebook.com/
Winchelseaanddistricthistoricalsociety/

Winchelsea Repertory Society Inc

facebook.com/winchrep/

Winchelsea Globe Theatre

facebook.com/Winchelsea-Globe-
Theatre-164790897641678

Winchelsea Uniting Church

facebook.com/winchelseaunitingchurch

St Thomas' Anglican Church

facebook.com/StThomasWinchelsea

St John the Baptist Catholic Church

facebook.com/pages/Winchelsea-
Catholic-Church/101775670163180

Winchelsea Mainly Music

facebook.com/
groups/668500343953191/

Winchelsea Health Club

facebook.com/WinchelseaHealthClub

Winchelsea Playgroup 2019

facebook.com/
groups/551663435367031

Winchelsea Girl Guides

www.guidesvic.org.au/

Winchelsea/Modewarre Scouts

facebook.com/1stModewarreScouts

Winchelsea Fire Brigade

facebook.com/winchelseafirebrigade/

Winchelsea SES

facebook.com/groups/WinchSES

Country Women's Association - CWA Winchelsea Branch

facebook.com/pg/CWAWinchelsea/

Winchelsea Bowls Club

facebook.com/Winchelsea-Bowls-
Club-533783333344345/

Winchelsea Blues Cricket Club

facebook.com/groups/8999049476/

Winchelsea Blues FC

facebook.com/WinchelseaFNC/

Mel's Dance Studio

facebook.com/melsdancecentral

Winchelsea Golf Club

facebook.com/winchelseagc/
facebook.com/
groups/1324943804676697

Winchelsea Kyokushin Karate Club

facebook.com/winchelseakyokushin

WYLD Winchelsea Youth Leisure and Drop in

facebook.com/
groups/569737570027065/

Lions Club of Winchelsea

facebook.com/LionsWinchelsea

Winchelsea Probus

10am 1st Mon month at Sen Citz Hall

Winchelsea Bowls Club

By Kitty 'n Jack

Saturday Pennant Results

January 21st Saturday Divi 1 were def by Apollo Bay away, winning 1 rink 70/108.

January 27th night match under the dome at Colac Winch Divi 1 def Camperdown, winning 2 rinks 103/80. Ladder position 4th.

January 21st Saturday Divi 3 Winchelsea def Colac away, winning 3 rinks 96/70.

January 28th Divi 3 def Lorne away, winning 2 rinks 88/74. Ladder position 1st.

January 21st Saturday Divi 4 Winchelsea were def by Skipton away, 22/60.

January 28th Divi 4 were narrowly def by Derrinallum at home, winning 1 rink 52/60. Ladder position 8th.

Midweek results

January 17th Midweek Division 1 Winchelsea were def by Colac City away 36/42. Unfortunately the match was called off due to extreme heat, however we won 1 rink and drew another. It was a shame we could not complete the full number of ends as the result may have been better.

January 24th Winchelsea 1 def Simpson away winning 1 rink, 68/51.

Ladder position 2nd by percentage only. The top 5 are Colac 120 points, Winchelsea 119 points, Camperdown Golf 119 points, Colac Central 119 points, Colac City 109 points. As we have to play Camperdown Golf at home this week and Colac away the following final round our eventual placing appears to be somewhat challenging.

January 17th Winchelsea 3 def Lorne at home, winning 2 rinks 54/44.

January 24th Winchelsea 3 def Derrinallum away, winning 1 rink 77/69. Winchelsea 3 play their final game at home this week as their last round is a bye. Ladder position 5th.

Around the Green

Unfortunately both Erin Baulch and Rhys Jeffs were defeated in their second round matches of the Champion of Champions Singles last Sunday at Colac. On Sunday 5th February Jason Armstrong will play at City against the Western Region winner of the State Men's Singles and if successful will play on against the Far Western Region winner the same day. Julie Johnson will play against the Western Region winner of the over 60's State Singles on the 16th of February at Camperdown Golf and if successful will go on to play the Far Western Region winner the same day. Erin Baulch and Jason Armstrong will play the finals of the State Mixed Pairs on 26th February, order of play and venue still to be advised. We wish all the players the very best for these matches.

At Winchelsea the Men's Pairs are still in the process of being finalized. Congratulations to Julie Johnson winner of the Ladies Consistency Singles, Runner Up Annie Walker. We are certainly nearing the end of the Pennant matches so to everyone, may the bowls be with you!!

Electoral structure review begins for Surf Coast Shire Council

Throughout 2023–24, 39 Victorian local councils will undergo electoral structure reviews, with round one reviews for 12 rural shire councils kicking off next week.

The Local Government Act 2020 (the Act) introduced several changes, including that all small and large rural shire councils must now have electoral structures that are either unsubdivided, subdivided with single-councillor wards, or multi-councillor wards with an equal number of councillors per ward.

The reviews will be conducted by independent electoral representation advisory panels.

Under the Act, the Electoral Commissioner (or delegate) must be a member of a panel.

The Victorian Electoral Commission (VEC) will provide technical and administrative support to the panels.

The 12 councils in round one have been divided into 3 groups.

For each group of councils, there will be 2 public information sessions to announce the start of the reviews, explain the processes, and open the submissions period. Surf Coast Shire is in Group 2 – 1 February to 1 May with preliminary submissions opening Wednesday 1 February

The VEC encourages all Victorians, particularly those in the local council areas under review, to contribute to the review process and have their say.

People interested in making a submission can map their proposed electoral structure online using the public submission tool available on the VEC website at vec.vic.gov.au/electoral-boundaries/council-reviews/electoral-structure-reviews from Wednesday 25 January.



Winchelsea
Supermarket

Trading Hours

Monday to Saturday

8.30am to 7.30pm

Sunday

10am to 7pm

Ph: 5267 2676

29 Main St, Winchelsea

WINCHELSEA CRICKET CLUB
presents

BACK to 80's Party

SATURDAY 4TH FEB
AT EASTERN RESERVE
DRESS IN YOUR BEST 80'S OUTFIT
PRIZES TO BE WON!

DOORS OPEN AT 6.30 PM
\$10 PER PERSON FOR ENTRY
NIBBLES & PARTY FOOD PROVIDED
DRINKS AT BAR PRICES

FOR MORE INFORMATION & TO PRE-BOOK TICKETS CONTACT:
JACINTA 0458 315 546

Winchelsea
Community Market

Shire Hall
9am - 1pm



MARKET dates for 2023

1 st January	2 nd July
5 th February	6 th August
5 th March	3 rd September
2 nd April	8 th October
7 th May	5 th November
4 th June	3 rd December



St Vincent de Paul Society
good works

Covering Meredith, Bannockburn, Anakie, Lethbridge, Inverleigh, Teesdale, Shelford, Elaine and Winchelsea

52219170

Monday - Friday 9am to 2 pm
<http://www.vinnies.org.au>

A caring Catholic organisation offering "a hand up" to all people in need.

Simco Plumbing and Gasfitting
24/7 Emergency service Ph:0400643976

- All General Plumbing and Gasfitting
- Roof and Gutters, Hot Water service changeover
- Split Systems, Air Conditioning and Wood Heaters
- Irrigation, Septic and Treatment plants
- Excavation, Bobcat and Tipper
- Rain water Tank installation
- Renovations and Extensions
- Gas conversions and servicing

Simon McGillivray
Lic:109610. Free quotes, Fast and friendly service

Winchelsea Men's Shed



For The Community
51 Hesse Street
Every Wednesday from 9:30am
New members always welcome

For more detail contact:
Ray Atkinson (Co-ordinator)
0407 839 139
or
winchmensed@gmail.com

Need a job done?
Woodworking jobs,
furniture repairs, small jobs.
Drop in and talk to us.



Breeze Health and Wellness, Exercise Physiology
32-34 Main Street, Winchelsea (old post office)
 Chronic disease? Injured? Wanting improved athletic performance?
 We can help you manage, rehabilitate and prevent many common ailments through movement.
 Speak with your GP about a referral for a care plan.
 Private health accepted - no referral needed.
 Call Brenton on 0428 790 023 to discuss or email breezehealthandwellness@gmail.com
 Exercise is Medicine, Motion is Lotion. Move with Ease at Breeze.

STS ACCOUNTING GROUP
Your Taxation & Superannuation Specialists.
 Winchelsea
5267 2673
www.surftax.com.au

Water Supply Specialists
WATER SOLUTIONS
 74 Dennis Street, Colac
 5231 1861
 ALL THINGS WATER:
 - PUMPS - PIPES
 - FITTINGS - TANKS
 - POOL CHEMICALS
 - IRRIGATION
 - WATER PURIFICATION
 - SOLAR - REPAIR

- Domestic and Commercial hire equipment
- Industrial welding gas
- Digging and Earthmoving equipment
- New trailers and trailer repairs
- Firewood
- Stockists of Royal Oil Lubricants products
- LPG for domestic and commercial requirements

Give Chris and the Team a call on **5232 1177** or email info@colachire.com.au
www.colachire.com.au
101 Wallace St Colac 3250

M & L DRAYTON
PLUMBING SERVICES
 REG No 24356 C/A No C02594

- Domestic and Rural Plumbing
- Roofing
- Sewerage & Septic
- LPG & Natural Gas Connections
- Motorised Drain Cleaning
- Backhoe Hire

Phone Mark 5288 7244
PO BOX 98 WINCHELSEA 3241
Mobile 0428 520 142

Winchelsea Taxis is now Surfcoast Taxis
 Our fleet of vehicles are growing to all late models and we are covering an extended area including Winchelsea, Colac, Bannockburn, Inverleigh, Great Ocean Road and Geelong.
 We have a fleet of 10 seater Maxi Vans, all with capacity to carry wheelchairs.

Surfcoast Taxis Pty Ltd
All Bookings: 0408 325 992
Fax: 5267 2699
Email: bannotaxis@gmail.com
 (Admin or Stan 0429 672 888)
 66A Batson Street
 Winchelsea 3241

Accounts NDIS provider. TAC, DVA etc
 NDIS provider number 4050001044
 NDIS provider number 4050001048

Commercial | Industrial | Domestic

HAMILTONS
Truck & Bobcat Hire
Give Aaron a Call
0438 438 623

SOUTHERN GRAIN STORAGE PTY. LTD.
 AG SUPPLIES FERTILISER GRAIN STORAGE SEED CLEANING
(03) 5267 2351



Volunteers Required

- Bus Driver & Outings Assistant
- Resident Visitor
- Events and Activities Assistant
- Group Wheelchair Walks Assistant
- Appointments Escort
- Social Support Activities
- Gardening - Winchelsea

Volunteers are essential to our aged care system, supporting the wellbeing of older people in their homes and in residential settings.

For more information please contact Jessica Culhane, Communications and Community Partnership Officer via phone on [03152671200](tel:03152671200) or via email jculhane@hesse.vic.gov.au

Funeral Planning

Working out what is best for you.

Prepaid Funerals, Funeral Bonds, Pay-by instalments...

There are many options and its important to make the right choice.

Alyson Burchell will be available by appointment to answer any questions about funerals and planning ahead.

For more information or to make an appointment contact Sue on 5221 4788

Tuckers Community Office,
Surf Coast Taxation Services, 22 Willis Street,
Winchelsea

First Tuesday of the Month,
by appointment 10.00am - 12.00pm

Caring for families since 1883

5221 4788

www.tuckers.com.au

HF RICHARDSON

PROPERTY

Servicing all your real estate needs

Ken McDonald **0418 524 150**

Residential | Rural Lifestyle | Agricultural Farms

rma network. Accredited Member

Charles Stewart & Company are leading livestock and real estate service providers covering Victoria's south west

Office
56 Bromfield Street, Colac
www.charlesstewart.com.au

LIVESTOCK	
Jamie McConachy	0418 522879
Peter McConachy	0408 522878
Matt Nelson	0428 315400
Gerard Bohan	0400 005541
Lachie Barclay	0438 346291
John Thornton	0408 526367
Dougal McIntyre	0439 575612
Ross Spitty	0419 539717

REAL ESTATE	
Michael Stewart	0418 520467
Daryl Osborne	0419 388341
Anthony McDonald	0418 593597
Gerard Bohan	0400 005541
Stephen Lugg	0417 556098
Josh Lamanna	0417 586032

Wightons Lawyers

Dispute Resolution & Litigation

Debt Collection

Property Law

Wills & Estates

Powers of Attorney

Business Law

Family Law

By appointment only

22 Willis Street, Winchelsea

ph. 5221 8777

www.wightons.com.au

MGT BUILDING & CONSTRUCTION

NEW HOMES | EXTENSIONS | RENOVATIONS

Ph: 0409 433 687



Chiropractic - Remedial Massage - Myotherapy - Sound Healing - Breathwork



Chiropractic care for:

Stress & Anxiety	Pain Management
Body Aches & Tension	Family Wellbeing
Poor Sleep	Health Longevity

03 5267 2240 Shop 4/21 Hesse St Winchelsea   <https://onebodychiropractic.com.au/>



Winchelsea
**Medical
Clinic**

Located at 36 Main Street, Winchelsea 3241

For any enquires or bookings please contact the clinic on 5292 8028.
Or visit our website: www.winchmc.com.au

Opening Hours:
Monday - Friday 8:00am - 5.00pm
(Monday Evening Clinics available and selected Saturdays)





Our clinic accepts online bookings via the app called HotDoc.
Download the app on the App Store or Google Play or head to our website.



**Transforming Your Health
Through the Healing Power of Nature**

NATUROPATHIC MEDICINE • HERBAL MEDICINE
NUTRITIONAL MEDICINE • HOMOEOPATHY
REMEDIAL MASSAGE

www.aquafirehealing.com
Ph: 0415 530 276

NATURAL GAS CONNECTIONS

**M. & L DRAYTON
PLUMBING SERVICES**

YOUR LOCAL LICENSED

- PLUMBERS (24356)
- GAS FITTERS
- GAS CONVERTERS
- CARBON MONOXIDE TESTING

MARK 0428 520 142



Moriac Veterinary Clinic
0447 781 089
PHONE 24 HOURS
784 Hendy Main Road Moriac
info@moriacvet.com
www.moriacvetclinic.com.au
HOURS // Monday - Friday: 8am - 5pm

Lupton BUILDERS

SPECIALISING IN QUALITY




REGISTERED Building Practitioner

• NEW HOMES	• EXTENSIONS	• RENOVATIONS
• ALTERATIONS	• DECKS	• PERGOLAS
• GARPORTS	• VERANDAHS	• RE-GLADS
• BATHROOMS	• WINDOW REPLACEMENTS	

LEIGH LUPTON
0438 840 104

CHRIS LUPTON
0407 681 514

LEIGHLUPTON17@GMAIL.COM EST. 1977



Pet Grooming

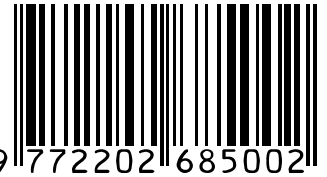
RONNIE.
Winchelsea's
pet groomer.
For appointments
0436 008 989
tangopetgrooming@gmail.com



Winchelsea Towing
24 Hour Accident and Breakdown Towing
0418 535 402



ISSN 2202-6851



**From peek-a-boo
to prep, we are
here every step
of the way.**

→ www.journey.edu.au | 03 9005 4650

JOURNEY
Early Learning

