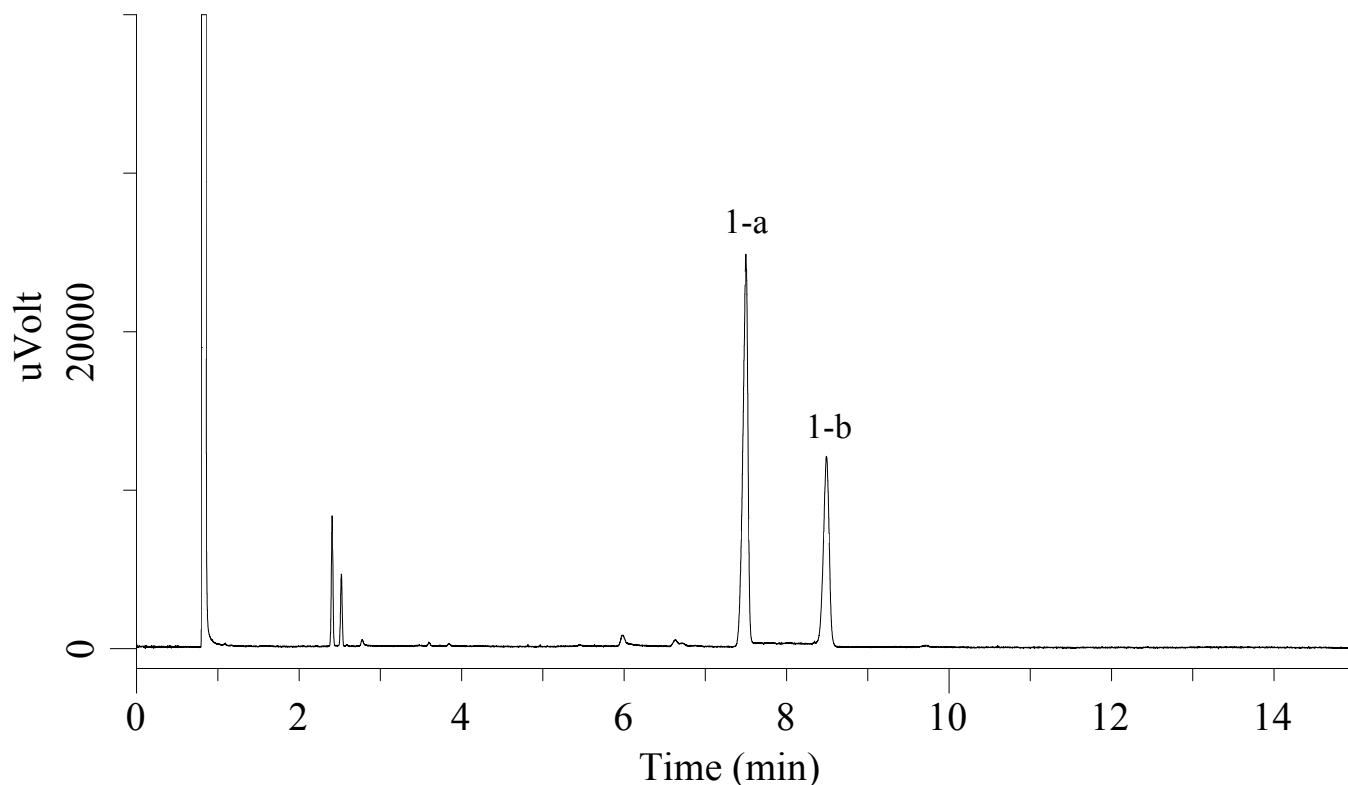


# InertSearch™ for GC

InertCap® Applications

## Analysis of Clomifene Citrate (Under the Condition of Japanese Pharmacopoeia 16)

Data No. GA244-0644



### Conditions

**System** : GC-FID  
**Column** : InertCap 1  
0.25 mm I.D. x 15 m df = 0.10  $\mu$ m  
**Col. Cat. No.** : 1010-11120  
**Col. Temp.** : 230 °C  
**Carrier Gas** : He 85 kPa  
**Injection** : Split flow 50 mL/min  
270 °C  
**Detection** : FID Range 10<sup>0</sup>  
300 °C  
**Sample Size** : 1  $\mu$ L  
**Sample** : Standard

### Analyte

1. Clomifene Citrate 1000 mg/L  
Resolution (a, b) : 8.3 ( $\geq$  5)  
RSD of the peak  
area ratio of  
b/(a+b) (n=6) : 0.38 ( $\leq$  1.0)