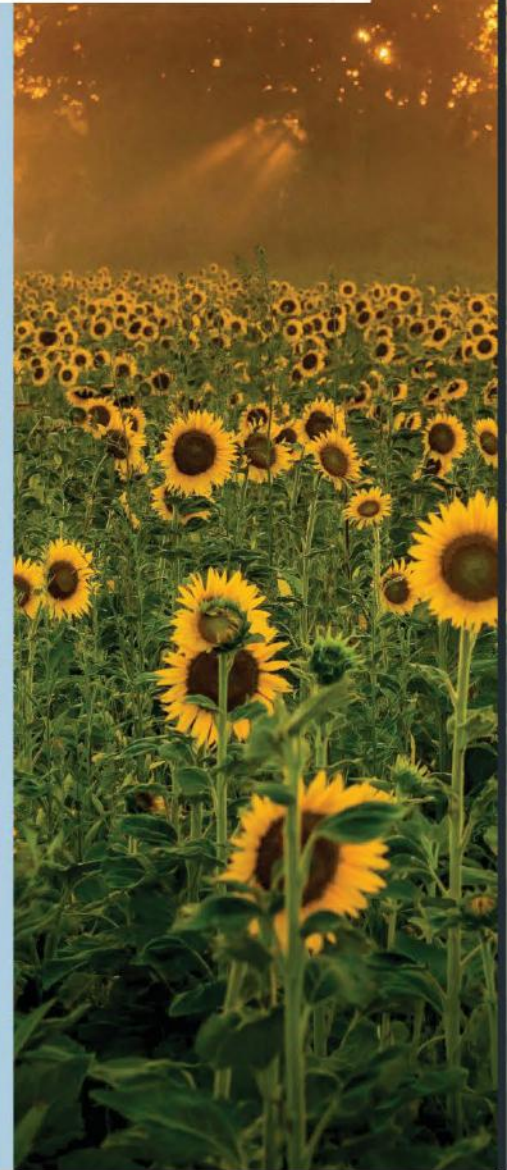
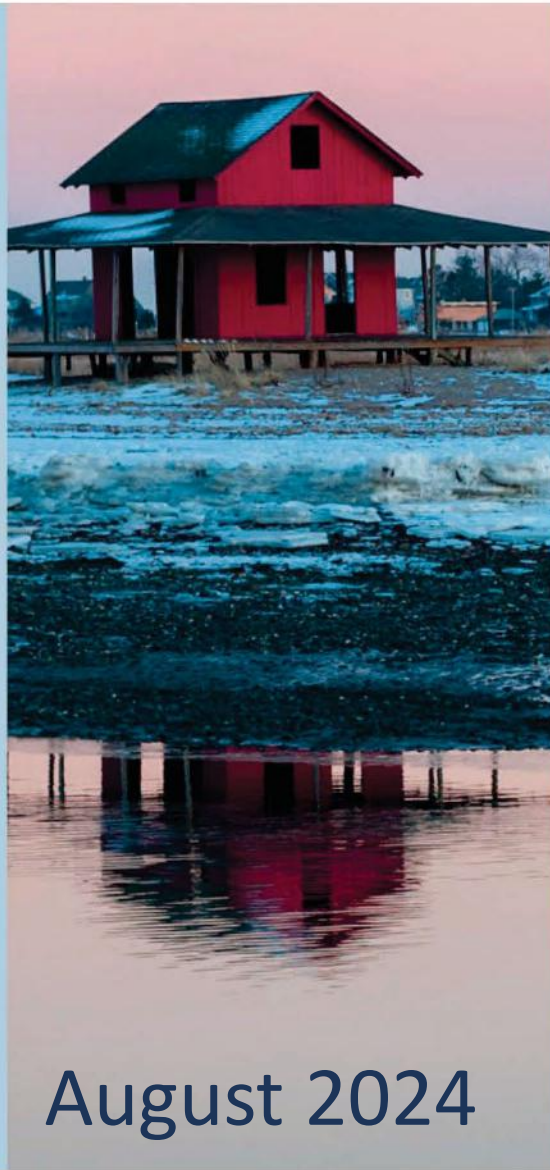


SHORELINE CONNECTIONS

A Magazine About Events, Businesses and
People Along the Shoreline

Branford, Guilford, North Branford



August 2024

 SHORELINE
CHAMBER

WWW.SHORELINECHAMBERCT.COM

SHORELINE CONNECTIONS

Shoreline Chamber Board of Directors

Chair: Denise Daviau – SARAH Inc.
Vice-Chair: Chad Edgar – Edgar Law LLC
Treasurer: Matt Laprino – Soundview Family YMCA
Secretary: Kristen Sibley – GSB

Directors

Erica Briggs – East River Energy	Rob Oman – Stone Insurance Agency
Karen Brown - Canción Ultra-Premium Tequila	Deanah O'Donnell – DeCaprio & Assoc
José Cuapio – FloorCraze	Francine Piscitelli – Allusions Salon & Boutique
Karen Delvecchio – Munger Construction	
Eric Emanuelson – Emanuelson Law Firm	Ex-Officio Directors
Jim Fennell – American Solutions for Business	Perry Maresca - EDC Branford
Susan Ganci – Edward Jones	Rory Burke – Asst. Town Mgr. North Branford
Marcia LaFemina – Penn Globe	Dee Jacob – President, Shoreline Chamber
	John Tarutis -EDC Guilford

Table of Contents

Table of Contents
Area Map
Community Calendar
History of the Shoreline: The Guilford Fair
Mixing the Perfect Portfolio –Expert Article
Welcome New Members
2024 Women of Excellence
Meet Our Members
Ribbon Cuttings
Understanding Dementia in the Context of Health – Expert Article
Lobster BASH
Board Member Spotlight
Member Recognition and Milestones
Meet Our Members
Safety Tip: Implementing Small Lighting Systems -Expert Article
Meet Our Members

www.shorelinechamberct.com



SHORELINE CONNECTIONS

Our Towns



**GRAB YOUR LAWN CHAIR, SHUT THE FRONT DOOR
& MEET US ON PORCHES DOWNTOWN FOR**

GUILFORD PORCHFEST

**SATURDAY, SEPTEMBER 7, 2024
NOON TO 5 PM**



**40+
PERFORMERS
ON 20+
PORCHES!**

RAIN DATE: SUNDAY, SEPTEMBER 8

FEATURING FREE PERFORMANCES BY GUILFORD'S OWN:

**ALI + NATE • A.P.B. II • BOB MILLER BAND • BREAKWATER BAND • CHRIS KIERTZ
CLARE BYRNE & THE CELESTIALS • CLOSE ENOUGH • CRESCENDO MUSIC LOFT STAFF & STUDENTS
CROSSROAD CROOKS • DAVE SWEET • DAVID ALPERT • DUDLEY FARM STRING BAND • FINDING FIFTHS
FRANK YANTORNO • GEORGE W. BRAVO • GHS JAZZ COMBO • GOODNIGHT BLUE MOON
HARLEY AND THE OG'S • HARVEY MARTIN • JIM NELSON • JOHNNY AND THE NOLFTONES
LAURA CLAPP • LAURIE KENNEY WITH BUMPY CHIMES • LIVING WITH ROBOTS • MEMBERS OF MAX CREEK
PATRICK GAZDA • PHIL ROSENTHAL • PICNIC ON THE 4TH OF JULY • REMY ADAIR • RON JOHNSON
RONAN FARRELL • SEAN O'REILLY • SETH AND ZACK • SHORELINE RINGERS • SHOVEL READY STRING BAND
THE BEANSTERS • THE MOONRISE CARTEL • THE NOSMO KINGS • THE OTHER FOUR
THE ODD COUPLE & FRIENDS • TOMCAT BOB • TROLLEY CREEK • WEIRD FISHES • WORK IN PROGRESS**



**SCAN FOR
LOCATIONS &
SET SCHEDULES!**



COMMUNITY EVENTS CALENDAR

Chamber events are highlighted in Green

SEPTEMBER 4, WEDNESDAY	ADAPT Virtual Divorce Workshop	6:00PM - 8:30PM	Women & Family Life Center	details
SEPTEMBER 5-8, THURS-SUNDAY	Friends of Hammonasset 11th Annual Mum & Pumpkin Sale	9:00PM - 5:00PM	Hammonasset Beach State Park	details
SEPTEMBER 5, THURSDAY	Farmers Market at the Guilford Fairgrounds	4:00PM - 7:00PM	Guilford Fairgrounds	details
SEPTEMBER 11, WEDNESDAY	RESTART Divorce Support Group at Women & Family Life Center	6:00PM - 8:30PM	Women & Family Life Center	details
SEPTEMBER 12, THURSDAY	Farmers Market at the Guilford Fairgrounds	4:00PM - 7:00PM	Guilford Fairgrounds	details
SEPTEMBER 12-15, THURS-SUNDAY	Friends of Hammonasset 11th Annual Mum & Pumpkin Sale	9:00PM - 5:00PM	Hammonasset Beach State Park	details
SEPTEMBER 17, TUESDAY	NET90 at Nite hosted by Holiday Inn Express in Branford	5:30PM - 7:30PM	Solstice Senior Living in Guilford	details
SEPTEMBER 13, FRIDAY	Cancion Tequila Tasting at the Grey Goat Farmtique	6:00PM - 8:00PM	Grey Goat Farmtique	details
SEPTEMBER 19, THURSDAY	Farmers Market at the Guilford Fairgrounds	4:00PM - 7:00PM	Guilford Fairgrounds	details
SEPTEMBER 19-22, THURS-SUN	Friends of the Blackstone Library Fall Book Sale	5:00PM - 7:00PM	Blackstone Library in Branford	details
SEPTEMBER 19-22, THURS-SUNDAY	Friends of Hammonasset 11th Annual Mum & Pumpkin Sale	9:00PM - 5:00PM	Hammonasset Beach State Park	details
SEPTEMBER 20-22, FRI-SUN	The Guilford Fair	see details	Guilford Fairgrounds	details
SEPTEMBER 24, TUESDAY	Business After Hours hosted by Outdoor Design & Living	5:30PM - 7:30PM	Outdoor Design & Living in Guilford	details
SEPTEMBER 26, THURSDAY	Farmers Market at the Guilford Fairgrounds	4:00PM - 7:00PM	Guilford Fairgrounds	details
SEPTEMBER 26-29, THURS-SUNDAY	Friends of Hammonasset 11th Annual Mum & Pumpkin Sale	9:00PM - 5:00PM	Hammonasset Beach State Park	details
SEPTEMBER 27, FRIDAY	Meals on Wheels Fundraiser - Darling Diva Bingo	5:30PM - 10:00PM	VFW in Guilford	details
SEPTEMBER 27, FRIDAY	Visiting Chef Dinner at Madison Beach Hotel with Chef Mark Rosenstein	7:00PM - 10:00PM	Madison Beach Hotel	details
OCTOBER 2, WEDNESDAY	NET90 - Hosted by Holiday by Atria Senior Living	5:30PM - 7:30PM	Atria Senior Living in Branford	details

[Click here for full list of events.](#)



spavia.

Guilford Commons

**FIRST VISIT
OFFER**

**SAVE
\$20**

60 Min Signature
Massage
or
Signature Facial

ONLY \$89, Regularly \$109

203.884.6684

Expires Soon

SCHEDULE NOW

www.spaviaguilfordcommons.com

THE GUILFORD FAIR

By Mairi Bryan

The Guilford Fair is one of the oldest in Connecticut, and the idea was born on the eve of the Civil war in 1858. At this time Guilford was an agricultural community, and it was four Guilford farmers who were the pioneers of the first fair. John Benton, Henry Griswold, George Hull and Henry Davis were joined in 1858 by John Hubbard, who hosted a meeting at his home on Broad Street and they called themselves the Farmers and Mechanics Association. This was incorporated as The Guilford Agricultural Society in 1874 and Hubbard was the first President. The objectives of the Society were the improvement of agriculture, horticulture and the "household arts", all of which continue to be the mission of the Agricultural Society today.

The first Fair was held in 1859 on the Guilford Green, featuring hundreds of yokes of oxen coming from Guilford, Madison and surrounding areas. There was a parade, fife and drum music, and decorated carts and wagons filled with agricultural products. The first Fair was a huge success.

Both the Agricultural Society and the Fair have been a part of Guilford life since 1859, with the Fair itself evolving over the years, hosting carnival rides and games as well as the traditional agricultural exhibits. Eventually the Fair outgrew the space on the Guilford Green, and in 1969 the Guilford Agricultural Society purchased the Guilford Fairgrounds on Lovers Lane, the venue for the Fair since then. In 2000 the Guilford Fair was named a Library of Congress Local Legacy.

The Agricultural Society has been dedicated to improving the property, erecting permanent barns, including the Woodruff Farm Museum which was moved by volunteers from the Woodruff property on Stone House Lane. This year there are two new barns on the Fairgrounds, built with the help of a grant from the Connecticut Department of Agriculture, and these will house the cows, sheep and goats. They were raised, as were the other barns on the property, by the Amish partners of the Agricultural Society.

This year's Fair will take place on September 20th, 21st and 22nd at the Guilford Fairgrounds, and as always will be a lively weekend with entertainment and exhibits for every age. There will be live bands on Friday and Saturday night, and Sunday afternoon, Carnival rides and an array of food and beverages.

CONTINUED

The traditional Guilford Fair Circus, as well as the Children's Zoo, pony and camel rides, and tractor and livestock pulls.

As one of Connecticut's oldest Fairs, there will also be the usual exhibits of handcrafts, flowers, vegetables, baking and photography, as well as the farmyard and animal exhibits. Farms and 4H groups from Connecticut and beyond come to exhibit their animals, and The Guilford Agricultural Society celebrates and supports the promotion of agriculture and animal husbandry as one of their primary missions.

In the words of John Hammarlund, "We at the Ag Society want to make the Fairgrounds and the Guilford Fair a place for happy memories to be made".



SEPT. 20, 21, 22


THIS WEEKEND

GUILFORD FAIR

NEW!

ALL 3 DAYS

THE GUILFORD FAIR FAMILY CIRCUS
The **FLYING WALLENDAs**
... A Circus Legacy



featuring **Bello Nock**
with a unique blend of comedy and jaw-dropping daredevil stunts

FRIDAY 5:00 & 7:00 pm SATURDAY 1:00, 4:00 & 7:00 pm SUNDAY 1:00 & 4:00 pm

Visit us online at: www.guilfordfair.org

ALL 3 DAYS



Don't Forget to see the Animals

**EXHIBITS • SHOWS
RIDES • FOOD
FUN & MORE**

ONE SHOW ONLY

Saturday Night 8:30

Meet Coaf
THE ULTIMATE TROUBLE



Visit us online at: www.guilfordfair.org

ONE SHOW ONLY

Friday Night 8:30

HOLLYWOOD NIGHTS



hollywoodnightsband.com

Visit us online at: www.guilfordfair.org

Sat. & Sun.

Hilby
"HILBY GOT BIG LAUGHS"
Wall Street Journal
"RIVETINGLY ABSURD"
New York Times

"HILBY TAKES CONTROL OF THE CROWD"
York Daily Record

"HILBY HAD THE CROWD IN STITCHES"
The Press (Christchurch NZ Paper)



www.hilby.net

Visit us online at: www.guilfordfair.org

2 SHOWS SUNDAY
11:00 & 2:00

JORDAN OAKS




NASHVILLE RECORDING ARTIST
JORDANOAKSOFFICIAL.COM

Visit us online at: www.guilfordfair.org

**All Entertainment, Exhibits, Shows
FREE with price of Admission**

ALL 3 DAYS


Childrens ZOO



Visit us online at: www.guilfordfair.org

ALL 3 DAYS

Rosaire's Royal Racers
The Ultimate in Racing Pigs



<https://www.rrracers.com>

Visit us online at: www.guilfordfair.org

ALL 3 DAYS

ZOO SHOW



Visit us online at: www.guilfordfair.org

AN OLD-FASHIONED COUNTRY FAIR

SINCE 1859

STONEHOUSE LANE ★ GUILFORD, CONN.

Visit us online at: www.guilfordfair.org

Admission: Adults/Children, \$15 • Seniors/Military, \$10 • Children 11 and under, FREE
Parking: On-Site, \$10; Exit 57 Shuttle Lot, FREE

MONTOWESE

V E T E R I N A R Y C L I N I C



Now Open!

275 Branford Road North Branford, CT

(203) 562-9896 (phone or text)

www.montoweseveterinaryclinic.com

We are accepting new Clients!

Empathy, Sympathy, Kindness, Compassion and Excellence



We are **privately owned** and operated by a **North Branford Resident (Veterinarian and Mom)**. We are a 2.5 doctor practice dedicating our time and efforts to providing the best medical care for your pet, and creating a **client and patient experience** above the rest!

Banking you can trust since 1936!



Live, Work, Learn or Pray in New Haven County - Join Today!

Becoming a member is easy and comes with perks!

- Super LOW Rates on Visa Credit Cards
 - Plus Secured Credit Cards to Build Credit!
- Vacation + Christmas Club Savings Accounts
- Automatic Savings (right from your paycheck so you don't have to lift a finger!)
- Free Checking, Online Banking and Bill Pay

All it takes is \$5 in a Share Account to become a member. Bring in this page or a copy and we will GIVE YOU THE \$5 so we can start helping you at life's crosspoints!



Find us at:

105 Sanford Street, Hamden, CT · 249 West Main Street, Branford, CT
200 Orange Street, New Haven, CT · 501 Crescent Street, New Haven, CT

Mixing the Perfect Portfolio: Investment Lessons from a Master Mixologist



**By: Manish Sharma, CFA - Investment Analyst
Grey Ledge Advisors**

Shoreline Chamber is one of the most admired institutions by institutions and professionals alike. So, when they asked us to write an article on how a good portfolio is like a good cocktail—building on one of our events where we presented this concept to our clients—we saw it as a perfect opportunity to share something both lighthearted and meaningful. This approach resonates not only with individual investors but also with those managing business investment accounts. Let's explore how the art of mixology can guide us in crafting the perfect portfolio.

Quality Ingredients: The Foundation of a Great Portfolio

When it comes to cocktails, the choice of ingredients is paramount. A top-shelf spirit can elevate a drink, while a subpar substitute can leave you with a less-than-satisfying experience. The same principle applies to investment portfolios. The foundation of any great portfolio lies in the quality of its investments. High-quality assets—whether they be blue-chip stocks, government bonds, or well-managed mutual funds—are akin to premium spirits in a cocktail. They provide the stability and potential for consistent returns that are crucial for long-term success.

In our experience, investors who focus on "Top Shelf" selections—those meticulously chosen investments with strong fundamentals—are more likely to build portfolios that can weather market volatility and deliver superior performance. On the other hand, opting for "Second Best" investments might seem like a cost-saving measure, but it often results in a portfolio that lacks resilience and growth potential. Just as a cocktail made with the finest ingredients leaves a lasting impression, a portfolio built on high-quality investments sets the stage for financial success.

Key Insight: Always prioritize high-quality, well-researched investments. These "Top Shelf" assets are the foundation of a strong, resilient portfolio.

CONTINUED

Classics vs. Fads: The Timelessness of Proven Strategies

In both mixology and investing, the classics never go out of style. Think about classic cocktails like the Old Fashioned or the Martini—they have stood the test of time because they are well-balanced and consistently satisfying. The same goes for investment strategies. While it can be tempting to chase after the latest market fads, these trends often lack the staying power of tried-and-true investment approaches.

Fads in investing, much like trendy cocktails, might offer the allure of something new and exciting, but they often come with higher risks and the potential for disappointment. We've seen time and again how sticking to enduring investment principles—such as diversification, value investing, and long-term growth strategies—leads to more reliable outcomes. Just as a classic cocktail delivers consistent satisfaction, a portfolio built on proven strategies provides stability and long-term success.

Key Insight: Stick to classic investment strategies that have proven their value over time. Avoid chasing fads that might seem appealing in the short term but often lack lasting substance.

Balancing the Mix: The Importance of a Well-Rounded Portfolio

The secret to a great cocktail is balance. A skilled mixologist knows how to combine flavors, strengths, and textures in just the right proportions to create a drink that is harmonious and enjoyable. The same is true for a well-constructed portfolio. Achieving the right balance between different asset classes—such as equities, bonds, real estate, and alternative investments—is essential for managing risk and optimizing returns.

A well-balanced portfolio is like a perfectly mixed cocktail: it combines a variety of ingredients in the right proportions to create something greater than the sum of its parts. By carefully balancing these asset classes based on your risk tolerance, time horizon, and financial goals, you can create a portfolio that offers smooth and consistent performance over time. And just as a bartender might adjust the proportions of a drink to suit the customer's taste, an investor should periodically rebalance their portfolio to ensure it remains aligned with their objectives.

Key Insight: A well-balanced portfolio is essential for managing risk and achieving your financial goals. Regularly review and rebalance your investments to maintain the right mix.

CONTINUED

Strategic Adjustments: Perfecting the Portfolio Over Time

Even the best-crafted cocktail might need a slight tweak—a dash more bitters, an extra squeeze of citrus, or a different garnish—to achieve perfection. In the world of investing, strategic adjustments play a similar role in refining and optimizing your portfolio over time.

These adjustments might involve rebalancing your asset allocation, taking advantage of tax-efficient strategies, or making tactical shifts based on changing market conditions. For example, during periods of market volatility, a shift towards more defensive assets can help protect your portfolio from downside risk. On the flip side, in a bull market, increasing exposure to growth-oriented investments might be the right move to capture higher returns. Just as a mixologist fine-tunes a cocktail to enhance its flavor, strategic portfolio adjustments ensure that your investments continue to work effectively toward your financial objectives.

Key Insight: Strategic adjustments to your portfolio can enhance performance and help you achieve your financial goals more efficiently. Regularly assess and fine-tune your portfolio to keep it aligned with your objectives.

If you have any questions about this content or would like learn how Grey Ledge may be able to assist you in meeting your financial goals, please contact us 203.453.9075.

We have refrained from using specific numbers or statistics here due to compliance requirements, but with a little research, you can find how staggering the multiplier effects on wealth can be when applying the above-mentioned factors.

Before your star employee asks,
“Do you have a minute...?”

...spend a few minutes with Grey Ledge Advisors to explore 401(k)s, IRAs, and other retirement plans that attract and retain top talent.



Grey Ledge Advisors offers customized investment options to meet the needs of your business and your team.

Visit [greyledge.com](https://www.greyledge.com) or call
203-453-9075 to speak to one
of our financial experts today!





FLEXIBLE COWORKING

CHOOSE FROM

- ✓ Day Pass - \$29/Day
- ✓ Flex Space - 5 Days a month - \$125/Month
- ✓ Flex Space - Unlimited Days a month - \$275/Month

INCLUDES

- ✓ Wi-Fi
- ✓ Kitchen
- ✓ Parking
- ✓ Printing

DAY PASS
\$29



SCAN ME

SCHEDULE A TOUR

- 📞 203-433-1544
- 📍 119 Montowese Street, Branford
- 🌐 www.branfordcoworking.com

Spring Approaches!

Time to “level up” your business’s online presence with professional product imagery, and perhaps a 360-Virtual Tour of your Business -- A virtual walkthrough available directly on Google Maps, or on your own website.

We’d like to extend a special offer to all Chamber Members. 20% discount on any shoot, for mentioning this Newsletter Post! We want to work with you!



Shoreline Pixels
Digital Photography and Imaging Specialists

Google Street View



TRUSTED
Photographer

Peter Sikes
Peter@Shorelinepixels.com
203-671-7338

WELCOME

to the **Shoreline** Chamber

Mena's Garden LLC

2871 Durham Rd
Guilford, CT 06437

www.menasgarden.com

Maturity Halfway

21 College Street
Clinton, CT 06413

www.maturityhalfway.com

Coastal Bliss Snaptique LLC

www.CoastalBlissSnaptique.com

(203) 988-6457

Star Fish Market

www.starfishmkt.com

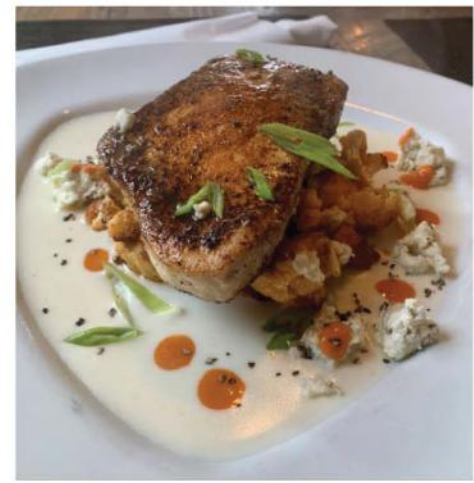
(203) 458-3474



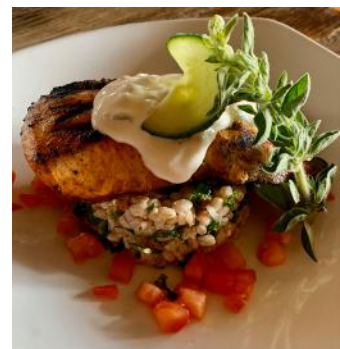
63 Whitfield Street
Guilford, CT 06437
(203) - 533-5845
www.southlanebistro.com

HOURS

Monday - Thursday: 4pm - 9 pm
Friday & Saturday: 4pm - 9:30 pm
Sunday: 4pm - 8pm



Casual, fine food, with curated cocktails, wine and craft beers, steps away form Guilford Green. Sit outdoors or inside, take out available, GF and vegan options.



CanciónTM

TEQUILA

100% Agave Azul Ultra-premium Tequila Co-Owned by Branford Residents



Where to Find Us

Branford

Coastal Wine & Spirits | Branford Wine & Liquor
Harbor Package Store | Indian Neck Liquor Store
Gabel's Package Store | Grey Goat Farmtique
Arturo's Restaurant | Doma On Main | Lenny's | Rosso Vino | Los Charros

Guilford

Frank's Package Store | Sunrise Liquor | Shoreline Wine Merchants
Quattro's | Guilford Mooring

www.canciontequila.com

Laundry-Express.com

"We Save You Time"

- Tired of doing load after load of laundry?
- Need more time in your week?
- Septic problems due to laundry?
- Have a family member that needs laundry service?
- Want more time to grow your business?



FREE

*Laundry Pickup & Delivery
Direct To Your Door!*

\$30 OFF*

FREE

**Laundry Bag with
First Delivery!**

*\$20 OFF (First) - \$10 OFF (Second)
Your First 2 Weekly Deliveries
Laundry-Express.com

Don't wait.

Call Today! 203-654-3421

www.Laundry-Express.com

HEALTH & WELLNESS FAIR OPEN HOUSE

SAVE THE
DATE!
NOV. 2ND



30+ EXHIBITORS, DRAWINGS, SEMINARS

Saturday, November 2nd, 9am to 12pm

SOUNDVIEW FAMILY YMCA

628 East Main Street, Branford



WOMEN OF EXCELLENCE

Congratulations 2024 Women of Excellence Honorees



Back Row l to r: Barbara Barrett, Mary Ellen DiLella, Rita Ney
Front Row l to r: Judith Meyers, Deborah Abildsoe, Paola Rarick





Centrality Physical Therapy & Wellness

YOUR PELVIC HEALTH IS OUR PRIORITY

Centrality Physical Therapy & Wellness is a physical therapy clinic that specializes in addressing pelvic health conditions across all ages (pediatrics to adults) & all genders.

We address conditions that are "too taboo for the dinner table" and often are "common but not optimal" like urinary leakage, pregnancy & postpartum pain, birth preparation, potty training struggles constipation, post surgical (hysterectomy, prostatectomy, etc), pelvic pain & pain with intimacy.

To learn more about pelvic health physical therapy, call our office at **203-533-1072** or visit us online at www.centralitywellness.com or by scanning the QR code



We are located in Guilford at 2351 Boston Post Road, Suite 403. Guilford, CT. 06437



Operational Efficiency & IT/Disaster Recovery/Cyber Security

Since 1991, Unapen, Inc. has provided IT services, custom software solutions, systems integration & software products tailored for Connecticut businesses of any size.

Our goal is to solidify & protect your IT infrastructure, enhance cyber security, streamline operations & workflow, centralize data, & automate highly complex manual tasks to make your business more successful & competitive.

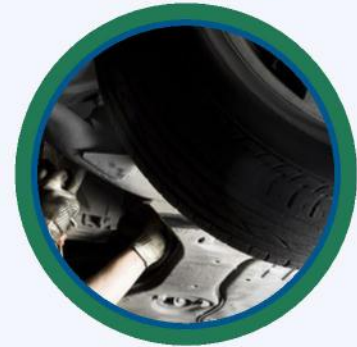
MEET A MEMBER GUILFORD TEXACO INC.



Guilford Texaco is a full-service automotive repair and maintenance shop known for its professionalism and consistent, friendly service in the Guilford area. As an ACDelco Repair Center and ASE Certified Shop, they offer top-quality care. Understanding that car repairs can be stressful, they ensure a welcoming, comfortable experience with services like free maintenance reminders, early bird and night-owl drop-boxes, and local shuttle service.

Gold Member since 2021

"Guilford Texaco is one of those repair shops that you can rely on. They deliver fast, reliable service. This shop is one of the elites in the area. Top-notch super professionals. If you need your car towed on a flat bed truck, they will come quickly. They are efficient, fast, and very friendly." J Fr.



guilfordtexaco.mechanicnet.com

MEET A MEMBER GRIECO FORD OF BRANFORD



GRIECO FORD OF BRANFORD

Grieco Automotive Group, a family business committed to 100% customer satisfaction, offers a world-class experience whether you're buying a vehicle, servicing one, or shopping for parts. Founded by Michael Grieco Sr. in 1975 with a collision center, the company expanded into new car franchises by 1995, eventually evolving into the Grieco Automotive Group as it acquired more brands. Now led by Michael Grieco Jr., one of the youngest automotive CEOs in the country, the group includes multiple franchises and remains dedicated to exceeding customer expectations with first-class service. **Gold Member since 2024**

"John and Melissa were very patient and helpful in serving me. I'm recommending them to people I know for their excellent customer service. A 10+ rating!!!" J. Davis



www.griecofordofbranford.com

Ribbon Cuttings & Milestones

CONGRATULATIONS



Photo by: Shoreline Chamber

LUMIBILITY

A member of the:  SHORELINE CHAMBER

CONGRATULATIONS!



Autac Inc celebrated 8.5 years accident free on Friday, August 16th. Marie-Louise Burkle, CEO, attributed this success of the organization to employee involvement and proactively working with OSHA. On hand to celebrate this safety milestone were Paul LaVoie, Chief Manufacturing Officer for the State of CT; Lisa Korfelt, CONN-OSHA; Perry Maresca, Branford Economic Development Director, Al Canosa EDC member, and Dee Jacob, President of the Shoreline Chamber. After touring the plant, Ms. Jacob presented a plaque to the AUTAC employees and CEO Burkle. Jacob stated that "this type of achievement only comes from the Company Leadership valuing safety as a priority and the employees embracing safety as their business."

Photo by: Shoreline Chamber

A member of the:  SHORELINE CHAMBER

OPENING OF THE ITALIAN FESTIVAL!



Saint George Men's Group

Answering the Call for Social Justice Through Good Works



Photo by: Shoreline Chamber

Italian Festival 2024

August 23rd & 24th
 Fri. 5:00-10:00 pm • Sat. 3:00-10:00 pm
 Behind St. George Church, Guilford
 Celebrating 10th Anniversary!

A member of the:  SHORELINE CHAMBER


CONGRATULATIONS!



The Bishops Farm Market and Orchards shared a generational event on Saturday, August 17th called Growing with Tradition – a Retirement and Succession celebration. The family and over two hundred friends celebrated the fifth generation of Bishop leadership as Keith and Jonathan as the officially retire. This was also a time to recognize the sixth generation as they take reigns – Sarah Bishop DellaVentura, Carrie Bishop Healy, and Ryan Bishop.

BISHOP'S ORCHARDS
 FARM MARKET & WINERY

Photo by: Shoreline Pixels

A member of the:  SHORELINE CHAMBER

CONGRATULATIONS!



Photo by: Shoreline Chamber



The Potato and Corn Festival

A member of the:  SHORELINE CHAMBER

UNLOCK YOUR BRAND'S POTENTIAL

With American Solutions for Business

Discover a suite of services designed to enhance your market presence, communications, and efficiency.

Our expertise and nationwide network deliver measurable results, turning your vision into reality.

Contact us today for a free consultation.

Jim Fennell

jfennell@americanbus.com

(203) 871-1150



eCommerce Solutions



Print & Document Solutions



Promotional Products



Kitting & Fulfillment Solutions



Fixtures & Displays



Direct Mail



Office Supplies



Marketing Solutions



Reporting Solutions



An Employee-Owned Company



Pioneer Environmental

Fire • Water • Mold • Wind • Asbestos

203-934-7332

HIC.0658016

www.pioneerenvironmentalct.com



Understanding Dementia in the Context of Health

By: Dr. Matthew Robinson ND

Advanced Therapeutics



Cognitive Decline is a broad term referring to any loss in mental capacity as a result of physiologic changes to the central nervous system. This can be associated with various medical diagnoses or even some medical treatments. However, the most common causes of this change are those related to advanced aging such as age-related dementia. There is no specific blood test or medical imaging study to diagnose cognitive decline.

Cognitive decline can manifest in various forms, affecting various aspects of mental function. Mild Cognitive Impairment (MCI) involves noticeable memory or cognitive difficulties that do not interfere significantly with daily life. Dementia, a more severe condition, includes diseases like Alzheimer's, characterized by progressive memory loss and confusion, and Vascular Dementia, resulting from brain damage due to stroke or poor blood flow. Each type presents unique symptoms and challenges, necessitating tailored approaches for diagnosis and management.

Diagnoses such as age-related dementia or Alzheimer's disease are usually made based on the symptoms and a Neurologist's clinical judgment. However, the severity of the symptoms can be scored using the Mini Mental State Examination (MMSE). The MMSE is a widely used tool for assessing cognitive function and screening for cognitive impairment, commonly utilized in clinical settings. This series of eleven questions evaluates several cognitive domains, including orientation, registration, attention and calculation, recall, and language. It consists of a series of simple tasks, such as identifying the current date, repeating a list of words, performing basic arithmetic, and following simple commands. Its simplicity and brevity make it a practical tool for both initial screening and longitudinal monitoring of cognitive function. It can be used to gauge how much worse a patient has gotten (and therefore how much assistance to daily activities they may need) as well as how much a patient has improved (and therefore how effective a given treatment may be). The MMSE is usually used by neurologists but can be performed by other trained professionals to assess the patient.

CONTINUED

At this time, a specific cause of these changes has not been found. In some cases, a lack of control of sugar in the brain may lead to the formation of plaques that diminish function. In other cases, there have been found gingival bacterial colonies that were able to cause inflammation in the central nervous system. Some nutritional experts have pointed out that a lack of essential fat may lead to a loss of function (the brain IS 80% fat by weight - but it needs to be built of the correct type of fat for optimal functioning). As is the case with most chronic illnesses, it is likely that there are several causes and that the best approach to treatment and prevention would involve trying to identify the cause(s) in the individual case rather than assuming that there is an easy answer. That being said, there are some promising therapies to enhance the healing of damaged tissue throughout the body.

Increased oxygen supply to damaged tissue can significantly enhance the healing process through a mechanism known as hyperbaric oxygen therapy (HBOT). HBOT involves breathing pure oxygen in a pressurized environment, which facilitates a higher oxygen concentration in the blood. This elevated oxygen level improves the delivery of oxygen to tissues, even in areas with impaired blood flow, such as those affected by injury or chronic disease.

One of the primary effects of increased oxygen is the promotion of cellular repair and regeneration. Oxygen is crucial for the production molecules which power cellular functions and repair processes. Enhanced oxygenation also stimulates the formation of new blood vessels, a process known as angiogenesis, which improves blood flow and nutrient delivery to damaged tissues. Additionally, increased oxygen levels help reduce inflammation and support the activity of white blood cells, which are essential for fighting infection and clearing debris from the injury site. This creates a more conducive environment for tissue repair. Overall, by boosting oxygen levels, healing is accelerated, and tissue regeneration is optimized.

Though there is no easy path to assessing or treating cases of cognitive decline, there are safe therapies available that can broadly enhance the processes to heal damaged tissue throughout the body including in the brain.

If you would like to make an appointment to learn more about the therapies we offer, contact us office@advancedtherapeuticsct.com or call 203-533-7089.



*Planning for the future begins with
the steps we take today.*



SOLSTICE
SENIOR LIVING

AT GUILFORD

201 Granite Road • Guilford, CT • Call Mindy (203) 458-3337 • SolsticeSeniorLivingGuilford.com

ADVANCED THERAPEUTICS

SPECIALIZING IN COGNITIVE IMPAIRMENT

Experience healthy gut support, reduced inflammation, and heal at a cellular level with our AquaLaurin protocols.

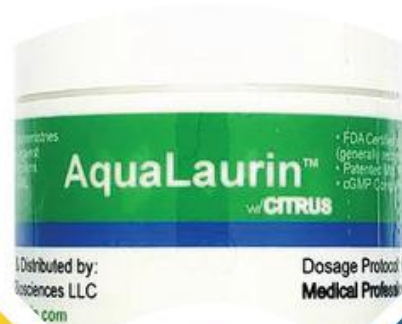
From cold laser therapy to our hyperbaric oxygen chamber, Advanced Therapeutics will keep you strong and active as you age.

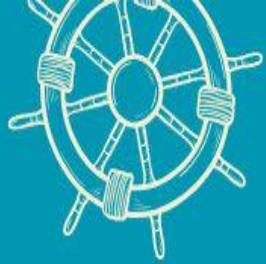
Matthew Robinson ND

WEBSITE: www.advancedtherapeuticsct.com

PHONE: (860) 533-7089

ADDRESS: 2614 Boston Post Rd. Guilford, CT 06437





LOBSTER L B A s H E R



BOARD MEMBER SPOTLIGHT ERIC EMANUELSON



Eric Emanuelson is an attorney and the owner of The Emanuelson Law Firm and has been on the board for 2 years.

Where you are originally from?

I'm originally from Bethany, Connecticut. I moved to North Branford, where I lived for 11 years, and then moved to Guilford.

Can you tell me a little bit about yourself and what you do?

I'm a lawyer with a general practice law firm. I've been practicing since 1987. My work spans real estate, business law, probate, bankruptcy, family law, estate planning, juvenile law, criminal matters, and more. Over the years I have handled a wide range of legal matters for families, individuals and corporations.

Is the office located in Guilford?

Yes, the office is located in Guilford on 1575 Boston Post Road. It's right off exit 57 in those white office condos set off by the road.

How long has it been there?

24 years.

What was your earliest involvement with the chamber and why did you decide to get involved with the chamber?

I wanted to get involved in the town and get involved with the businesses in the town. My wife, family and I try to shop local and support local businesses as best we can, so by being part of the chamber I thought it would help further that goal. I think the networking is part of it, but that's not my main goal. It's taking part and supporting the local business community.

You know, we could all shop at big box stores and order from Amazon, but then we wouldn't have amazing businesses like Page Hardware and Appliance, Palumbo's, Bishops, Jerry's Transmissions and other wonderful, local businesses that are owned and run by our neighbors, if we all shop somewhere else.

Do you feel like it's helped your business as well to be able to network through the chamber?

I think it has, but as I said, that isn't my sole goal. I've been practicing for a long time. It doesn't hurt to network, but that wasn't the goal for being a part of it. I've been involved in a lot of volunteer activities over the years and I like getting involved and taking part in the local community.

What's your current position with the board?

I'm a board member.

What's a fun fact, or something that people should know about you?

When I lived in North Branford, I became an EMT and I've been volunteering as an EMT with the North Branford Fire Department since 1997. I work one shift every a week from six to midnight. I enjoy that. To me, that's being part of the community as well.

Sounds a little stressful too!

Well, it's much different than my day job. My day job can be quite stressful, but I grew up in a family and environment where we try to do what we can to help others and that's part of what I do. The joke is instead of chasing ambulances, I got in one!

I'm also part of the St. George's Men's Group. While I was raised Catholic, I attend church at Christ Episcopal Church in Bethany, which is 45 minutes away. Ten years ago Bob Jacob asked me if I wanted to be part of St. George's Men's Group, and I said, "Well, I don't even go to that church!" and they told me that that does not matter, so I've been part of the St. George's Men's Group since.

Can you tell me a little bit about that group and what you do?

That group is actually putting on the Italian fest this weekend right behind the church. It's a big production with lots of dedicated volunteers putting in lots of time for a good cause. It is also a group that raises money and supports local charities like Habitat for Humanity, Raise the Roof, SARAH, and the Women & Family Life Center, among others.

I've been involved kind of as a worker bee rather than a leader there, so I cannot list all of the great work they do, but it's a group that is a subsection of the church to help people. Also, if somebody needs something painted or a staircase fixed, there are people within that group that will lend their talents to that.

It's a really nice group. I mean, people got together on a recent Tuesday night to roll hundreds of meatballs, for example, and then got together at a different time to make lasagna. I wish I knew more about it, the history of it to give you more information, but I just know that it's a wonderful group of like-minded people that again, want to give back to the community and support Guilford and support people in need, which is fantastic. That's why I take part in it.

What's your favorite spot on the shoreline?

I live down off of Trolley Road and the little quiet beach in Joshua Cove is my favorite spot. In the evening watching the sunset with my wife and neighbors after a hard day makes it a wonderful spot to unwind.

OFFICE FOR RENT



\$350 / month

Interested?

Contact Dee Jacob at the
Shoreline Chamber
203-488-5500

- Utilities included
- Internet included
- Own Key to office
- Furniture Not included
- Dimensions 13.5' x 7'

2614 Boston Post Rd. Guilford, CT



Residential Heat Pump Water Heater Rebate

Rebate Offer: **\$650** for qualifying units

We help make it affordable to upgrade to an ENERGY STAR® certified heat pump water heater with a \$650 discount for eligible models. Whether you're replacing an old water heater or installing one in a new home, you'll save money up front.



ENERGY STAR certified heat pump water heaters (HPWHs) promise huge energy savings.

ENERGY STAR certified HPWHs can save a household of 4 approximately \$550 per year on its electric bills compared to a standard electric water heater and more than \$5,610 over the HPWH's lifetime. <https://www.energystar.gov/>

FEDERAL TAX CREDIT OF 30% OF COST UP TO \$2,000*

For customers who meet certain income eligibility guidelines, even greater incentives may be available through the Home Energy SolutionsSM – Income Eligible program.

Call us today to speak to a professional about your money saving options!



East River Energy
Your Energy Partner

203-453-1200
eastriverenergy.com



Total Comfort Control
Air Conditioning & Heating Specialists

MEMBER RECOGNITIONS AND MILESTONES

Autac Inc celebrated 8 ½ years accident free on Friday August 16. **Marie-Louise Burkle**, CEO, attributed this success of the organization to employee involvement, and proactively working with OSHA. On hand to celebrate this safety milestone were Paul Lavoie, Chief Manufacturing Officer for the State of CT; Lisa Korfeit, CONN-OSHA; Perry Maresca, Branford Economic Development Director; Al Canosa EDC member, and Dee Jacob, President of the Shoreline Chamber. After touring the plant, Ms. Jacob presented a plaque to the AUTAC employees and CEO Burkle. Jacob stated that “this type of achievement only comes from the Company Leadership valuing safety as a priority and the employees embracing safety as their business.”

Congratulations to **Alexander Sulpasso**, EVP, Client Experience Officer, Guilford Savings Bank being named a Hartford Business Journal 2024 40 Under Forty honoree! This prestigious award recognizes 40 of Connecticut’s most dynamic and accomplished young professionals who have made significant impacts in their industries and communities before reaching the age of 40.

The **St. George Men’s Group** (SGSM) celebrated the 10th Anniversary of the Italian Festival. The Italian Festival brings the group together making all the Italian Food from meatballs to lasagna, combined with great music. The Italian Festival, like all the SGMG events raises funds for a non-profit. This year all of the proceeds will go to Sound Life Connections whose mission is to create an inclusive community in which people with disabilities feel welcomed and valued through employment and social opportunities.

CONTINUED

The Bishops Farm Market and Orchards shared a generational event on Saturday, August 17th called Growing with Tradition – a Retirement and Succession celebration. The family and over two hundred friends celebrated the fifth generation of Bishop leadership as Keith and Jonathan as the officially retire CT Commissioner of Agriculture, Bryan Hurlbutt, congratulated Keith and Jonathan. State Comptroller Sean Scanlon presented a citation from Governor to Keith and Jonathan. This was also a time to recognize the sixth generation as they take reigns – Sarah Bishop DellaVentura, Carrie Bishop Healy, and Ryan Bishop.

Lumibility, Inc (formerly SARAH Inc) celebrated their rebranding as Lumibility on August 21st at the beautiful and interesting Shoreline Trolley Museum. The rebranding initiative allows Lumibility to amplify its impact and bring renewed energy to its mission: to enhance skills and transform lives for all individuals with differing abilities.

Lumibility, Inc (formerly SARAH Inc) celebrated their rebranding as Lumibility on August 21st at the beautiful and interesting Shoreline Trolley Museum. The rebranding initiative allows Lumibility to amplify its impact and bring renewed energy to its mission: to enhance skills and transform lives for all individuals with differing abilities.

The Shoreline Chamber of Commerce wants to share your awards, recognitions, celebrations. You have worked hard to receive these recognitions and want to celebrate your accomplishments with our members and beyond each month. Send your recognition news to Mary at mary@shorelinechamberct.com by the 20th of each month.



Are you invested properly? Contact me
for a complimentary portfolio review.



Michael Ganci, AAMS®, CRPC®
Financial Advisor

71 Whitfield Street
Guilford, CT 06437-2610
203-458-2185



Sue Ganci
Financial Advisor

200 Boston Post Rd
Suite Unit 1
Madison, CT 06443
203-779-6962



SEPTEMBER

NET90 At Night

Hosted by **Holiday Inn Express – Branford**

September 17, 2024 – Notice new date!

5:30pm – 7:30pm

Business After Hours (BAH)

Hosted by **Outdoor Design & Living** – Guilford

September 24, 2024

5:30pm – 7:30pm

OCTOBER

NET90 At Night

Hosted by **Holiday by Atria Senior Living** – Branford

October 2, 2024

5:30pm – 7:30pm

Business After Hours (BAH)

Hosted by **Branford CoWorking** – Branford

October 29, 2024

5:30pm – 7:30pm

NOVEMBER

Business After Hours (BAH)

Hosted by **Woodwinds** – Branford

November 12, 2024

5:30pm – 7:30pm

Meet John Tarutis, Economic Development Coordinator Town of Guilford



We welcome the new Economic Development Coordinator for Guilford, John Tarutis. John is a long time Guilford Resident, and besides EDC, he is an assistant dockmaster in Guilford.

John comes to the EDC position with an extensive background of enthusiasm, leadership, and management skills. Most recently, he led development at CT Hospice, John's career has spanned leadership positions at Yale as well.

John is excited to work closely with the Guilford Green Merchants and other retailers and restaurants to improve the shop and dine Guilford experience. He is spearheading a Business Resource Fair on October 9th, 9am-12pm at the Nathanael B. Greene Community Center, open to the public with state and local resources for entrepreneurs, small businesses and large.

John is married and proud father of two daughters and three grandsons. He is an avid angler – especially on Long Island Sound. He enjoys travel and among his favorite places to travel is Europe.

BUSINESS RESOURCE FAIR

Connect, Learn, and Engage!



9:00 am - 12:00 pm
October 9, 2024



Nathanael B. Greene Community Center
32 Church Street, Guilford

Join entrepreneurial ecosystem providers that can help you start, grow and expand your small business!
Learn all about FREE & low-cost resources available to help you with your business plan,
access capital and other great opportunities available to all entrepreneurs

Exhibitors Include:



SBA.GOV/CT

SBA's cooperation does not constitute or imply endorsement of any opinions, products, and/or services. All SBA programs are extended to the public on a non-discriminatory basis.
Handicapped Accessible.



Over 200 Quality Used Cars

139 West Main Street

Branford

(203) 466-2622

www.soundautowholesalers.com

Free Lifetime Powertrain Warranty



MEET A MEMBER

RAISE THE ROOF



Raise the Roof CT is a non-profit organization affiliated with Habitat for Humanity. It focuses on building affordable homes for families in need by mobilizing volunteers, donors, and local businesses. The organization hosts events like the "Raise the Roof Gala" and "Build on the Green" to fundraise and engage the community. Through its efforts, Raise the Roof has helped many families achieve homeownership, strengthening the local community. **Nonprofit Member since 2023**



"Raise the Roof believes that everyone deserves a decent, affordable and safe place to live. To honor this belief, we work to bring the Shoreline community together to partner with families and help them build and own Habitat homes. Our "building" consists not only of the physical work; we raise awareness of the need for such housing, raise funds to sponsor the work, and seek out volunteers to serve alongside families and help them build."



www.raisetherooft.org

MEET A MEMBER

GUILFORD COMMUNITY TELEVISION INC. (GCTV)



GCTV, or Guilford Community Television, is a public access television station in Guilford, CT. It serves as a platform for local content, offering residents the opportunity to create and broadcast their own television programs. GCTV covers a variety of local events, including town meetings, school events, community activities, and special interest programs. The station is dedicated to fostering community engagement and providing a voice for the residents of Guilford by offering resources and support for those interested in producing their own content.

Nonprofit Member since 2020

"GCTV gathers and spotlights the stories, news and rich local color of the Guilford community. Routed in first amendment rights to freedom of speech we invite the community to not only view a variety of opinions and viewpoints but share them as well."



www.guilfordtv.org



Complete Solutions For your Business

We've got you covered!

OFFICE FURNITURE

Complete selections of all products including Seating, Desking, Filing, Storage

Office Design Services

Furniture Reconfiguration Design

Installation Services

FURNITURE for the HOME OFFICE

Desking

Seating

Sit to Stand Units

Monitor Arms

OFFICE SUPPLIES

COPY PAPER

INK AND TONER

JANITORIAL SUPPLIES

PERSONAL PROTECTION EQUIPMENT (PPE)

Gloves (nitrile, vinyl)

Social Distancing Acrylic divider screens

Hand Sanitizers

Disinfectant Wipes Alcohol Wipes

Masks (3 ply, reusable, n95)

Disposable Gowns level 1,2,3

PRINTING

Letterhead

Business Forms

Envelopes

PROMOTIONAL PRODUCTS

Imprinted Company Advertising

Specialty Items for your business

Apparel

Employee Gifts

Holiday Cards

Identification Products

Business Signage

Name Plates

Self-inking stamps and rubber stamps

CALL TODAY for DETAILS and PRICING

Bill Wilson

"Wilson on Wheels"

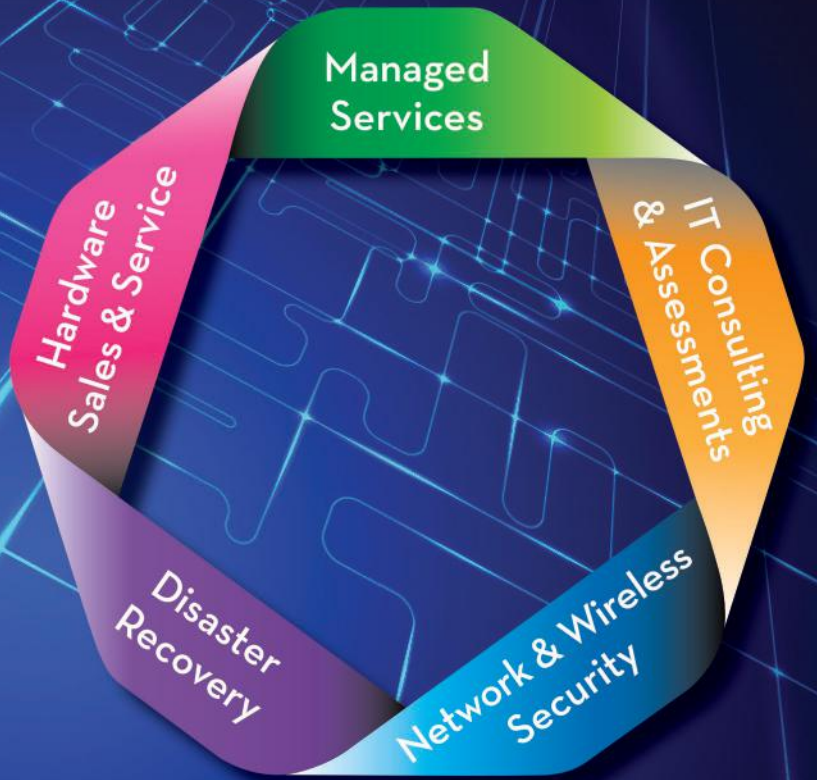
wow@Atlanticbusinesssupply.com

www.Atlanticbusinesssupply.com

(860)983-0915

AOS

ADVANCED OFFICE SYSTEMS



296 E. Main Street, Branford, CT 06405 • (203) 481-5349
211 Shunpike Road, Cromwell CT 06416 • (860) 635-7100
www.aosinc.com

SALES • SERVICE • SUPPORT



BUSINESS OWNERS, What Is Your Plan for Transitioning Out of Your Business?

Eric Lawton, CEPA®
President, Impact Financial
eric@impactyourgoals.com
Tel. 203 884 0120



70%-80% OF TRANSITIONS FAIL, BUT IT IS ALSO TRUE THAT 20% TO 30% ARE SUCCESSFUL.

- Are there specific actions that business owners can take that set them up to achieve a successful transition?
- What can you learn from successful transitions?

OUR PROCESS CAN HELP YOU MAKE IT EASIER THAN YOU EVER THOUGHT POSSIBLE.

Learn more
Impactyourgoals.com

Safety Tip: Implement Smart Lighting Systems for Enhanced Facility Safety and Sustainability

By: Liz Tullo, Marketing Manager
Pat Munger Construction Company, Inc.



Smart lighting systems can significantly enhance safety, improve operational efficiency, and support sustainability goals.

Why It Matters:

1. **Improved Visibility:** Smart lighting ensures optimal lighting conditions throughout your facility. Poor lighting can lead to accidents, especially in high-risk areas such as warehouses and manufacturing floors.
2. **Energy Efficiency:** Smart lighting systems adjust brightness based on occupancy and natural light, reducing energy consumption and preventing overheating or electrical issues that could pose safety hazards.
3. **Emergency Response:** In case of emergencies, smart lighting can guide employees to exits safely. These systems can be programmed to turn on specific lights or change their color to signal evacuation routes during a fire or other emergencies.
4. **Enhanced Security:** Smart lighting can be integrated with security systems to enhance surveillance. Motion-activated lights can deter unauthorized access and improve the effectiveness of security cameras by ensuring well-lit areas.
5. **Sustainability and Green Practices:** Smart lighting contributes to sustainability efforts by reducing energy consumption and lowering the facility's carbon footprint. Using energy-efficient LED lights and smart controls aligns with green practices and can help achieve sustainability certifications.
6. **Automated Maintenance Alerts:** Smart lighting systems can monitor their own status and send alerts when maintenance is needed, reducing the risk of lighting failures that could compromise safety.

CONTINUED

Key Features to Implement:

1. **Motion Sensors:** Install motion sensors to ensure lights are only on when areas are occupied, enhancing both safety and energy efficiency.
2. **Daylight Harvesting:** Use daylight sensors to adjust artificial lighting based on the amount of natural light available. This not only saves energy but also maintains optimal lighting conditions.
3. **Emergency Lighting:** Program your smart lighting system to activate emergency lighting in case of a power outage or other emergencies. Ensure these lights are clearly marked and lead to exits.
4. **Remote Control and Monitoring:** Utilize a central control system to monitor and adjust lighting settings remotely. This allows for quick adjustments in response to changing conditions or emergencies.
5. **Integration with Security Systems:** Integrate your smart lighting with existing security systems. Motion-activated lights can improve visibility for security cameras and deter potential intruders.

Implementation Tips:

1. **Conduct a Lighting Audit:** Assess the current lighting setup in your facility to identify areas where smart lighting can improve safety and efficiency while supporting sustainability goals.
2. **Prioritize High-Risk Areas:** Focus on high-risk areas such as loading docks, manufacturing floors, and storage areas where proper lighting is crucial for safety.
3. **Start with a Pilot Project:** Implement smart lighting in a specific area of your facility to test its effectiveness before expanding it throughout the facility.
4. **Employee Training:** Train employees on the benefits and operation of the smart lighting system. Ensure they know how to respond to lighting changes during emergencies.
5. **Regular Maintenance:** Schedule regular maintenance checks to ensure the smart lighting system is functioning correctly and address any issues promptly.

By implementing smart lighting systems, facility managers can significantly enhance safety, improve energy efficiency, support sustainability goals, and create a more secure environment for employees. Pat Munger Construction Company, Inc., a commercial general contractor located in Connecticut, is here to help with your facility projects. Contact us today!



ROOFING SERVICES

- ROOF REPLACEMENTS
- ROOF INSPECTIONS
- ROOF INSURANCE CLAIMS
- ROOF CLEANING
- ROOF TUNE-UPS



LOW MONTHLY FINANCING OPTIONS WITH \$0 DOWN

203-909-8075



MEET A MEMBER

GUILFORD FUNERAL HOME



GUILFORD
FUNERAL HOME

Guilford Funeral Home in Guilford, is a long-standing, family-owned funeral service provider that has been serving the community with compassion and professionalism. They offer a range of services, including traditional funerals, cremations, memorial services, and pre-planning options. The funeral home is known for its caring staff, who are dedicated to helping families during difficult times by providing personalized and respectful services. The facility itself is designed to offer a comforting environment for families and friends to gather, remember, and honor their loved ones.

Silver Member since 2021

"George and team were wonderful to work with on our dad's funeral service. They are so professional and empathetic. They truly made a difference during a tough time. We can't thank them enough." Bill O.



www.guilfordfuneralhome.com

MEET A MEMBER

COHEN'S BAGEL COMPANY

Cohen's Bagels in Madison, CT, is a popular local spot known for its freshly made bagels, sandwiches, and a variety of baked goods. Located in a cozy and welcoming setting, Cohen's Bagels has become a go-to destination for residents and visitors alike looking for a tasty breakfast or lunch. The bagels are made fresh daily, and the menu offers a wide selection of options, including classic bagels with cream cheese, hearty bagel sandwiches, and delicious coffee. The shop has a friendly, community-oriented vibe, making it a favorite spot on the shoreline for a quick bite or a casual meal. **Silver Member since 2023**

"Best bagels on the shoreline. I always order online to skip the long line that can form on weekends. The cheddar everything bagels are our favorite, but all varieties are good. As close to a NY bagel as you can get in CT."

J. Comerford



www.cohensbagelcompany.com



116 Montwese Street
Branford, CT

.....
STOP BY AND SAY HELLO
.....



A GIFT SHOP FEATURING
LOCAL ARTISANS AND UNIQUE GIFT FINDS



**The only bank
you'll ever need.**
MyGSB.bank • Member FDIC

IS YOUR SMALL BUSINESS PAYING BIG BANK FEES?

LET'S SHARPEN THAT PENCIL.



**GSB offers FREE business
banking audits to review:**

- Monthly banking fees
- Balance requirements
- Additional cost savings
- Interest rates paid/earned
- Digital banking products
- Cash management solutions

**Contact us today to learn about potential big savings for
your business. Scan the QR code, or call 203-914-9302.**



Teresa Crampton
Director of
Business Banking
203-914-9302



**Let's get
started!**