

Simple Concentration Analysis of Introduced Aromatic Components of Shaoxing Rice Wine - Use of Sorptive Media MonoTrap

MonoTrap RGC18TD, a simplified enrichment tool, was used to screen and analyze the flavor components in Shaoxing rice wine. MonoTrap RGC18TD is supplied individually packaged in ampoules, no pre-conditioning is required and there is no risk of contamination.

Pretreatment procedure

Shaoxing rice wine

Place 30 mL of sample in 40 mL vials

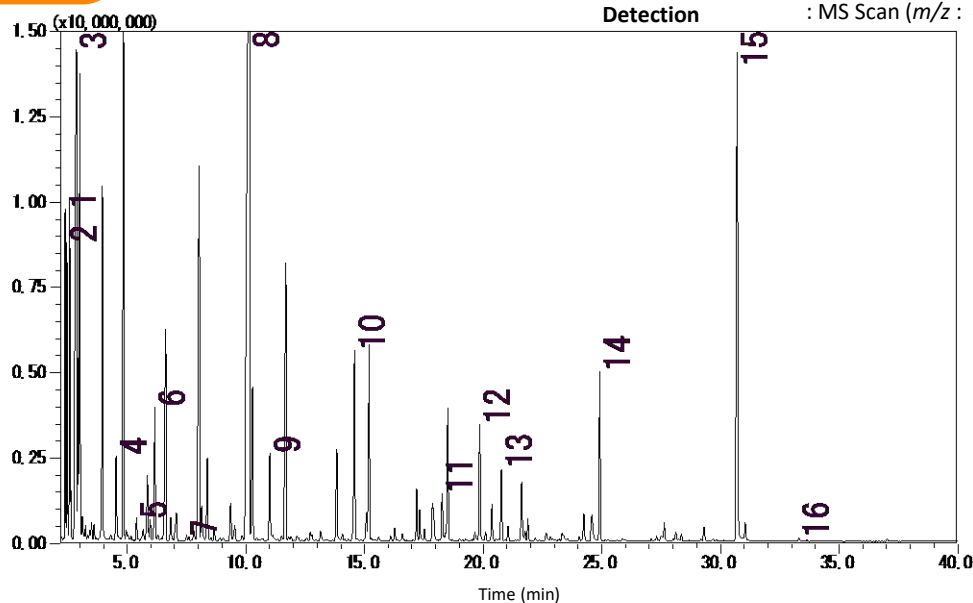
Collection (HS)
One MonoTrap RGC18TD

At room temperature for 3 h

TD-GC-MS

Conditions

| | |
|------------------------|--|
| System | : GC-MS-Thermal Desorption |
| Column | : InertCap Pure-WAX 0.25 mm I.D. x 30 m df = 0.25 μ m |
| Col.Temp. | : 40 °C (5 min) - 4 °C/min - 250 °C |
| Carrier Gas | : He 1 mL/min (constant flow) |
| Desorb Temp. | : 200 °C |
| Time | : 5 min |
| Flow | : 2 mL/min |
| Split | : Splitless |
| Cryo Trapping | : -160 °C |
| Injection Temp. | : 250 °C |
| Detection | : MS Scan (m/z : 40 - 600) |



- | | |
|-----------------------------|-----------------------------------|
| 1. Ethyl Acetate | 9. Ethyl hexanoate |
| 2. Ethylidene diethyl ether | 10. Ethyllactate |
| 3. Ethyl alcohol | 11. Furfural |
| 4. Ethyl butanoate | 12. Benzaldehyde |
| 5. Ethyl 3-methylbutanoate | 13. 2,3-Butanediol |
| 6. Isobutyl alcohol | 14. Ethyl succinate |
| 7. Ethyl pentanoate | 15. Phenylethyl Alcohol |
| 8. Isopentyl alcohol | 16. γ -n-Amylbutyrolactone |

* Standard samples are not used for qualitative analysis. Results from a library search.

GL Sciences disclaims any and all responsibility for any injury or damage which may be caused by this data directly or indirectly. We reserve the right to amend this information or data at any time and without any prior announcement.

GL Sciences, Inc. Japan

22-1 Nishishinjuku 6-Chome
Shinjuku-ku, Tokyo,
163-1130, Japan
Phone: +81-3-5323-6620
Fax: +81-3-5323-6621
Email: world@glsciences.com
Web: www.glsciences.com

GL Sciences B.V.

De Sleutel 9
5652 AS Eindhoven
The Netherlands
Phone: +31 (0)40 254 95 31
Email: info@glsciences.eu
Web: www.glsciences.eu

GL Sciences, Inc. USA

4733 Torrance Blvd. Suite 255
Torrance, CA 90503
Phone: 310-265-4424
Fax: 310-265-4425
Email: info@glsciencesinc.com
Web: www.glsciencesinc.com

GL Sciences (ShangHai) Ltd.

Tower B, Room 2003,
Far East International Plaza,
NO,317 Xianxia Road,
Changning District.
Shanghai, China P.C. 200032
Phone: +86 (0)21-6278-2272
Email: contact@glsciences.com.cn
Web: www.glsciences.com.cn

International Distributors

Visit our Website at www.glsciences.com/distributors