



CORPORATE FASHION FOR EVERY BUSINESS





THIS PAGE

1

RAMONA DRESS /
Sandstone
sizes 26 - 48

2

JIM BLAZER /
Black Magic
sizes 34 - 54

JAKE PANTS /
Black Magic
sizes 28 - 48

OPPOSITE PAGE

3

ROSE BLOUSE /
Pearl Black Pearl
Polyester
sizes 28 - 54



2

1



CONTENTS

02	What is Corporate Fashion?
04	How Corporate Fashion Benefits You
07	The Business Benefits of Corporate Fashion
08	Cannings - A Customer's Journey
10	Our Story
19	How to Order
20	Get Your Boss to Pay
21	Start Here
22	Our Reds
46	Our Neutrals
60	Our Blues
94	Our Greens
124	Our Monochromes
152	Our Brights
168	Ladies Style Reference
209	Mens Style Reference
218	Winter Warmers
220	SilverLife Functional Wear
226	Ladies Size Chart
228	Mens Size Chart
230	Suiting Fabrics
232	Pearl Polyester Colours + Prints
236	Cotton Rich Colours + Prints

WHAT IS CORPORATE FASHION?

A corporate fashion is a set of clothes that businesses require employees to wear to create a professional and consistent look. It often includes company colours, making employees easy to identify and promoting the brand.

Buying a corporate uniform ensures continuity, meaning all employees maintain the same professional image over time, keeping the company's identity strong and recognizable.

Before





Transformation complete!

HOW CORPORATE FASHION BENEFITS YOU

✓ **SAVES YOU TIME**

Eliminates the daily stress of deciding what to wear.
No more endless hours wasted in the morning
deciding what to wear.

✓ **PROMOTES A PROFESSIONAL IMAGE**

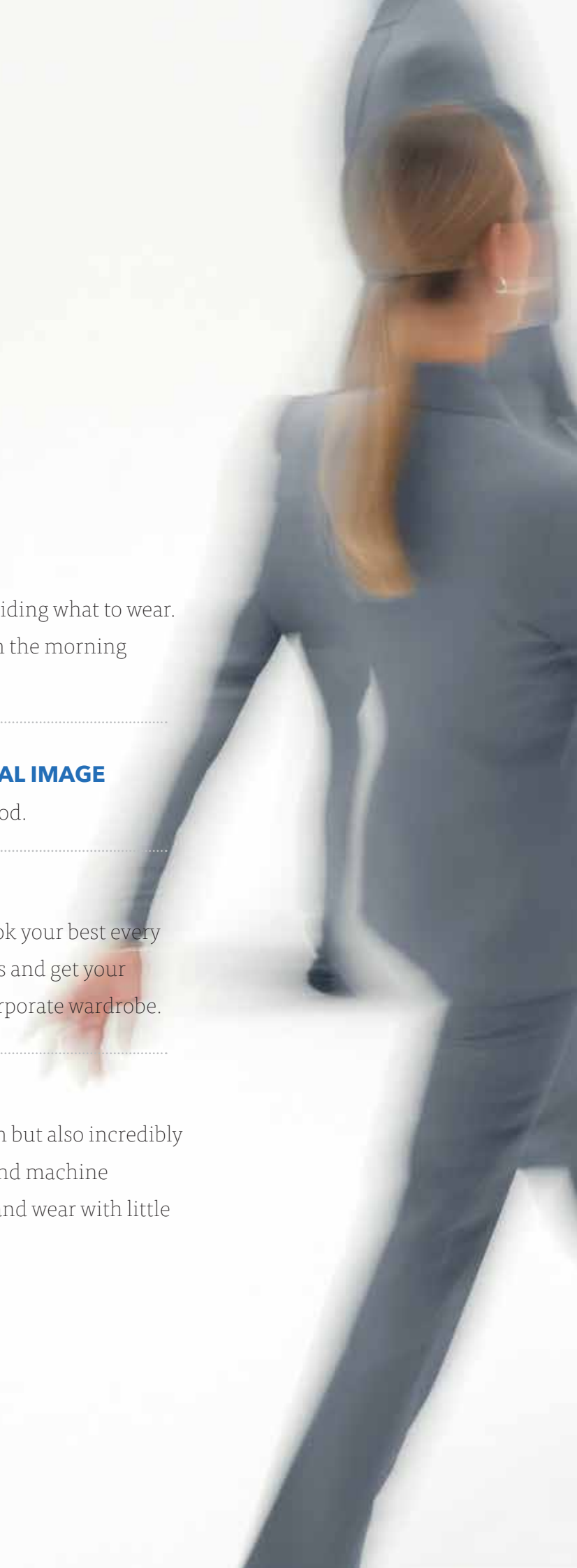
When you look good, you feel good.

✓ **SAVES YOU MONEY**

No need to spend a fortune to look your best every
day. Close your clothing accounts and get your
company to pay towards your corporate wardrobe.

✓ **EASY CARE**

Our garments are not only stylish but also incredibly
convenient. They are easy care and machine
washable, allowing you to wash and wear with little
to no ironing required.







 **imagemakers**
CORPORATE FASHION FOR EVERY BUSINESS



THE BUSINESS BENEFITS OF CORPORATE FASHION

✓ **ENHANCE THE COMPANY IMAGE**

Enhances the company's brand identity and creates a polished, professional appearance.

✓ **BRAND RECOGNITION**

Acts as a walking advertisement, increasing visibility and awareness of the company.

✓ **TEAM UNITY**

Fosters a sense of belonging and teamwork among employees.

✓ **CUSTOMER TRUST**

Instils confidence in customers by presenting a consistent and professional look.

✓ **DRESS FOR SUCCESS**

Selling your product becomes easy. When employees look good, they feel good.

✓ **STAND OUT FROM THE CROWD**

Corporate wear creates a distinction amongst your competitors.

✓ **WE OFFER CONTINUITY**

You can repeat an order when you have a new staff member.

CANNINGS / A CUSTOMER'S JOURNEY

At Imagemakers, we believe that the right corporate wear can transform not just appearances, but also confidence, morale, and brand identity and gain your customer's trust. **This is the journey of how we gave Cannings a fresh, bold transformation.**



The team carefully selected colours and styles that aligned perfectly with Cannings' brand and identity. To ensure flexibility and variety, they chose mix-and-match options that allowed employees to express their individuality while maintaining a cohesive, professional look.

The Result?

A stunning new look that completely elevated Cannings' corporate image.

But it wasn't just about appearances. The new corporate wear had a powerful impact on the team. Employees shared how the updated look made them feel more confident, professional, and proud to represent their company.





The new corporate wear didn't just change how Cannings' employees looked—it changed how they felt.

The team reported feeling more confident, professional, and proud to represent their company. The cohesive, polished look also made a strong impression on clients and partners, reinforcing Cannings' reputation as a leader in their field.

Cannings' new look reinforced their reputation as a leader in their industry,

demonstrating their commitment to professionalism, quality, and attention to detail.



3

GENERATIONS

MORE THAN

42

YEARS OF
DEDICATED SERVICE

**LEADING
WITH
LEGACY**

ESTABLISHED

1982

INDUSTRY LEADERS

**WE
ARE A
FAMILY-
RUN
BUSINESS**

MORE THAN JUST A COMPANY, WE'RE A FAMILY

With over 560 employees and a training school, we may sound big, but we have big hearts and endless care for the people we work with every day.

5

OWNER RUN
FACILITIES

35

CATALOGUES

570+

EMPLOYEES
AND STEADILY GROWING

**PROUDLY
SOUTH AFRICAN**

DESIGNED &
MANUFACTURED
LOCALLY

COMPANIES DRESSED WITH
1 - 10 STAFF MEMBERS

37%

11 - 20
STAFF MEMBERS

25%

21 - 50
STAFF MEMBERS

19%

51 - 500
STAFF MEMBERS

12%

500 - 100 000+
STAFF MEMBERS

7%

OVER

21 500

COMPANIES
OUTFITTED

MORE THAN

**11.07
MILLION**

GARMENTS PRODUCED
AND COUNTING

SMALL

TO
LARGE

SCALE BUSINESSES

21

COUNTRIES
DELIVERED TO

OUR **IN-HOUSE DESIGN** **AND MANUFACTURING** **FACILITIES**

We operate five factories producing stylish, contemporary collections to high-quality standards. Our in-house manufacturing leads to significant cost savings compared to traditional corporate wear suppliers.



At over 3000sqm, we are proud to own and run the largest cutting and garment manufacturing operation in Africa.



WHAT WE DO BEST

Our full-time designers and skilled patternmakers create clothes that present your team in a refined, true-to-brand way.



*We are
meticulously involved
at every stage, from design
to the manufacturing
of each garment.*



WE DRESS TEAMS TO BE INDIVIDUALS

Our collections are made with real people in mind. We offer a diverse range of garments for various body types in the professional setting.

You can mix and match your chosen styles within your company's chosen colour scheme, allowing you to maintain your individuality while still appearing as part of an unified, professional team.

MINDFUL MANUFACTURING

At Imagemakers, we're committed to sustainable and fair manufacturing. Our highly skilled team pays attention to every detail, ensuring transparency about working conditions and the well-being of our employees.

We focus on empowering our team, fostering personal development, and ensuring product responsibility.



We take pride in our commitment to cutting-edge technology, consistently integrating the most advanced machinery available.



PEOPLE ARE OUR SECRET INGREDIENT

WE PROVIDE CONTINUITY

im **imagemakers**
CORPORATE FASHION FOR EVERY BUSINESS

We ensure continuity in your uniform selection. The prints, colours, and styles you choose will consistently be available year after year. We collaborate with trusted third-party suppliers to secure a steady supply of fabric and trims.

This means that whether it's for existing staff or new team members, you can count on Imagemakers to consistently deliver your company's chosen colour scheme.



*Our innovative ordering
portal makes ordering
super easy!*

EXPERT IMPLEMENTATION SUPPORT & GROUP ORDERS

After executing numerous uniform programs, we've refined our system for a smooth process. Your dedicated account manager oversees critical functions, including scheduled fittings, ordering, tracking, reporting, payment options, and providing a uniform pack per employee.



*Every order is
individually packed and
quality checked.*



WE DELIVER - IN EVERY SENSE

Every order is individually packed and invoiced, ensuring a seamless and transparent process.

STITCH BY STITCH LEARNER SCHOOL

Our “Stitch by Stitch” Learner School (SETA Accredited), launched in 2023, transforms garment manufacturing training. It nurtures young talent, by upskilling our local workforce with qualifications and cross-skilling, creating a sustainable pipeline of skilled professionals.



We invest heavily in the development and upskilling of our workforce, nurturing our local communities.



WHATSAPP 066 476 0105



CALL US 0861366011



EMAIL sales@imagemakers.co.za

 **imagemakers**
CORPORATE FASHION FOR EVERY BUSINESS

ENVIRONMENTAL RESPONSIBILITY

While trends change, we don't believe fashion should be disposable. Each of our garments are carefully designed and constructed to last, becoming essential staples within our customers' everyday office wear wardrobes. Each style embodies a timeless quality, promoting longevity of wear.



SUSTAINABILITY

We're on a journey to reduce our impact on the environment. Our manufacturing facilities use solar energy and water-saving technology. We've implemented recyclable fabric offcut baling and actively incorporate sustainable materials in our packaging and production.

We are proud to run our 5 factories on renewable energy. We are on a journey to reduce our impact on our environment.

HOW TO ORDER



SHOW

Let each staff member see the catalogue and choose their favourites.



SELECT

Your style, your way.

Simply start with a main colour that matches your brand for your team's outfit, select your styles and matching colours.



ORDER

Email your order to sales@imagemakers.co.za or ask for login details to capture your own order online.



CONFIRM

Sign the Order Confirmation to make your order official.



DELIVERY

Your order will be sent out around 8 weeks after you confirm it. Each person's items will be packed separately.

LET'S CHAT



Whatsapp 066 476 0105



Call us on 0861366011



Email sales@imagemakers.co.za



GET YOUR BOSS TO PAY

FREE
FOR
YOU!

Selling corporate wear to your company, all starts by showing the catalogue to your colleagues.

GET THE CONVERSATION STARTED!

1

Ask Imagemakers for Quotations.

Based on our mix and match suggestions. This way, we can do the quotes in **YOUR** preferred colour combinations.



2

List the Advantages of Investing in a Corporate Wardrobe to Management.

- Creates a professional company image.
- Boost team morale.
- When employees look good they feel good, and selling the product or service becomes easy.
- A corporate wardrobe frees the employees from a sense of inferiority.
- No need to enforce a dress code.
- Employees save time in the morning, not having to worry about what to wear.
- A company contribution helps the employees save money.



Introduce our Mix & Match Concepts to Management.

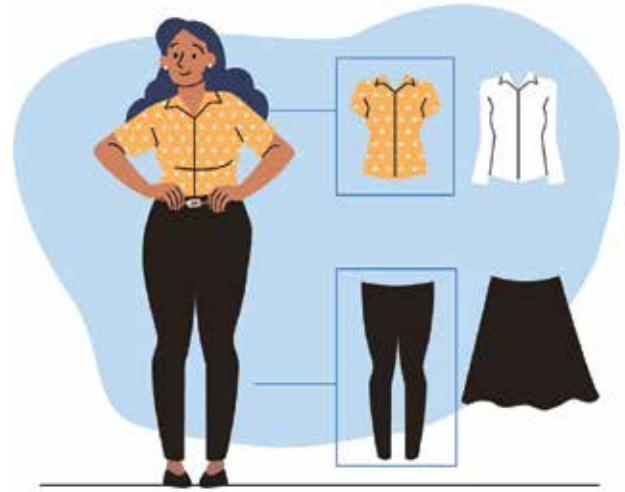
3

Present them with the quotes Imagemakers did for you:

5 Garments = 8 Outfits

7 Garments = 18 Outfits

9 Garments = 34 Outfits!



4

Suggest the following Payment Options:

Ask your management to pay for the wardrobe as a staff benefit - **first prize!**

OR: Your company and employees each pay a part, with the employees paying the company back interest free via a salary deduction over an agreed time period.

OR: The company pays the full amount, with the employees paying the company back interest free via a salary deduction over an agreed time period (12/18/24 months).



GET STARTED!



START BY PICKING YOUR TEAM'S COLOURS!

We've grouped our collections by colour to help you decide.

These are just suggestions - Choose your own!

OUR REDS



Here are our suggested red blouse and shirt combinations. Enjoy creating your own.

LADIES
PEARL POLYESTER BLOUSES
/ Fiona / Pearl White



MENS + LADIES
COTTON RICH SHIRTS
/ Weston
/ Plain White

LADIES
PEARL POLYESTER BLOUSES
/ Florence / Pearl White



MENS + LADIES
COTTON RICH SHIRTS
/ Botanical
/ Plain White

To see our
entire selection of
Pearl Polyester options
are on page 232

All Cotton Rich options
are on page 236

im **imagemakers**
CORPORATE FASHION FOR EVERY BUSINESS

SILKY STRETCH KNIT
FOR LADIES BLOUSES & DRESSES

Our **Silky Stretch Knit Range**
offers soft, stretchy fabric with
a luxurious drape, designed to
flatter all body shapes.

LADIES
PEARL POLYESTER BLOUSES
/ Yacht / Ribbon Red



LADIES
SILKY STRETCH KNIT
/ Asian / White / Red



MENS + LADIES
COTTON RICH SHIRTS
/ Olympic
/ Ink Navy



1
KENDALL WAISTCOAT /
Pacific Navy
sizes 28 - 54
KOURTNEY BLOUSE /
Fiona Pearl Polyester
sizes 26-54
HANNA PANTS /
Pacific Navy
sizes 28-48

2
DAVID BLAZER /
Pacific Navy
sizes 32 - 48
DEAN SHIRT /
Weston Cotton Rich
sizes XS - 3XL
DYLAN PANTS /
Pacific Navy
sizes 28 - 48

3
CHRISTINE PANTS /
Pacific Navy
sizes 28 - 48

RED ALERT

BOLD, FIERY, UNSTOPPABLE



4
ELMARIE DRESS /
Fiona Pearl Polyester
sizes 28 - 54



5
SHAKIRA WAISTCOAT /
Pacific Navy
sizes 26 - 54
KAYLA BLOUSE /
Pearl White Pearl Polyester
sizes 28 - 48
SUSAN SKIRT / Pacific Navy
sizes 28-54



6
LOUISE DRESS /
Pacific Navy
sizes 28 - 54



THIS PAGE

1

ELMARIE DRESS /
Fiona Pearl Polyester
sizes 28 - 54

2

KAYLA BLOUSE /
Pearl White Pearl Polyester
sizes 28-48
SUSAN SKIRT /
Pacific Navy
sizes 28-54

1

2



THIS PAGE

3

LOUISE DRESS / Pacific Navy
sizes 28 - 54

4

KENDALL WAISTCOAT / Pacific Navy
sizes 28 - 54
KOURTNEY BLOUSE / Fiona Pearl Polyester
sizes 26-54
HANNA PANTS / Pacific Navy
sizes 28-48

5

DAVID BLAZER / Pacific Navy
sizes 32 - 48
DEAN SHIRT / Weston Cotton Rich
sizes XS - 3XL
DYLAN PANTS / Pacific Navy
sizes 28 - 48



**NO IRON
REQUIRED**

All garments are easy
care. Just wash and wear
and go, go, go!

1

2

ENDLESS POSSIBILITIES

You may be part of a team, but you are also an individual. Own your own style with 6 colour palettes, and over 50 styles - we've got your look!

OPPOSITE PAGE

1

ELMARIE DRESS /
Fiona Pearl Polyester
sizes 28 - 54

2

DAVID BLAZER / Pacific Navy
sizes 32 - 48

DEAN SHIRT / Plain White Cotton
Rich / sizes XS - 3XL

DYLAN PANTS / Pacific Navy
sizes 28 - 48

THIS PAGE

3

CHRISTINE PANTS / Pacific Navy
sizes 28 - 48

3



WHATSAPP 066 476 0105



CALL US 0861366011



EMAIL sales@imagemakers.co.za

LET RUBY



1

JIM BLAZER / Pacific Navy
sizes 34 - 48
DEAN SHIRT /
Botanical Cotton Rich
sizes XS - 3XL
JAKE PANTS / Pacific Navy
sizes 28 - 48

2

SHAKIRA WAISTCOAT /
Pacific Navy sizes 26 - 54
KIM BLOUSE / Pearl White
Pearl Polyester
sizes 26 - 54
CAPRICE PANTS / Pacific Navy
sizes 26 - 48

REIGN

RULE THE FASHION GAME!



3
BETH JACKET /
Pacific Navy sizes 28 - 54
KHOSI TOP / Ruby Red sizes 28 - 54

4
ASTRID BLOUSE /
Florence Pearl Polyester / sizes 26 - 48
HELGA PANTS / Pacific Navy / sizes 28 - 54

5
SUSAN SKIRT / Ruby Red
sizes 28 - 54



1



2

THIS PAGE

1

BETH JACKET / Pacific Navy
sizes 28 - 54

KHOSI TOP / Ruby Red
sizes 28 - 54

2

ASTRID BLOUSE / Florence
Pearl Polyester
sizes 26 - 48

HELGA PANTS / Pacific Navy
sizes 28 - 54

OPPOSITE PAGE

3

SUSAN SKIRT / Ruby Red
sizes 28 - 54

4

JACOB WAISTCOAT / Pacific Navy
sizes 34 - 54

DEAN SHIRT / Plain White
Cotton Rich
sizes XS - 3XL

JAKE PANTS / Pacific Navy
sizes 28 - 48





**MACHINE
WASHABLE**

All garments are machine washable, including our blazers and jackets.

1

2

PERFECTLY SIZED

Imagemakers makes clothes to suit every shape. We have the perfect fit for you, from top to toe.

NOT SURE ABOUT YOUR SIZE?

See our Ladies size chart on page 226 and Mens size chart on page 228.

OPPOSITE PAGE

1

SHAKIRA WAISTCOAT / Pacific Navy
sizes 26 - 54

KIM BLOUSE / Pearl White
Pearl Polyester / sizes 26 - 54

CAPRICE PANTS / Pacific Navy
sizes 26 - 48

2

JIM BLAZER / Pacific Navy
sizes 34 - 48

DEAN SHIRT / Botanical
Cotton Rich / sizes XS - 3XL

JAKE PANTS / Pacific Navy
sizes 28 - 48



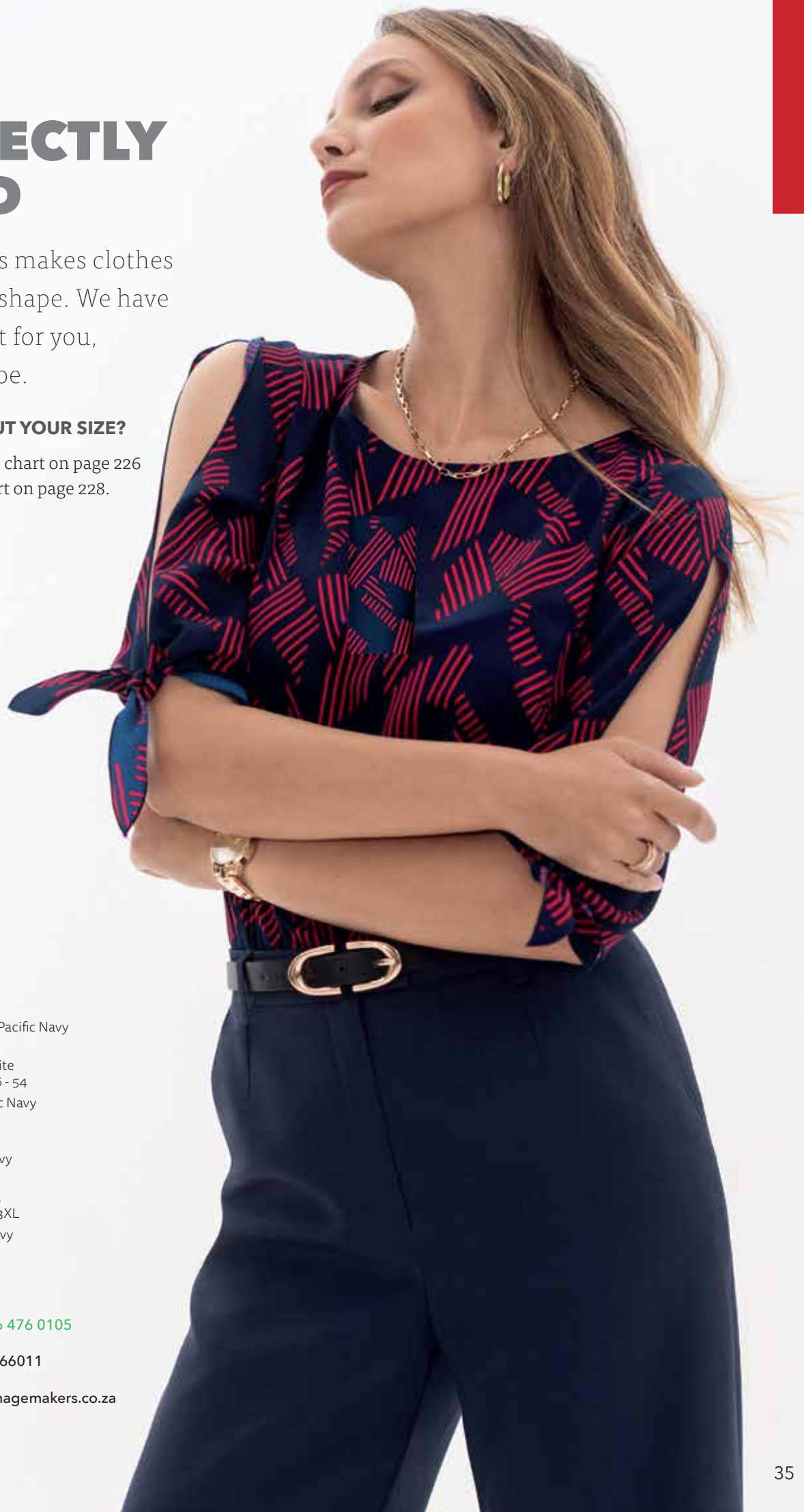
WHATSAPP 066 476 0105



CALL US 0861366011



EMAIL sales@imagemakers.co.za



CHERRY

THE PASSION FOR POWER DRESSING



1

SABRINA BLOUSE /
Ribbon Red Pearl Polyester / sizes 26 - 54
CHRISTINE PANTS /
Pacific Navy / sizes 28-48

2

JIM BLAZER /
Pacific Navy / sizes 34 - 48
DEAN SHIRT /
Olympic Cotton Rich / sizes XS - 3XL
DYLAN PANTS / Pacific Navy / sizes 28 - 48

3

BECKY BLOUSE /
Yacht Pearl Polyester / sizes 26 - 48
CAPRICE PANTS /
Pacific Navy / sizes 26 - 48

BOMB



4
ARIANA JACKET /
Pacific Navy / sizes 28 - 44
KAYLA BLOUSE /
Pearl White Pearl Polyester / sizes 28 - 48



5
RAMONA DRESS /
Pacific Navy
sizes 26 - 48



6
RIHANNA DRESS /
Yacht Pearl Polyester
sizes 28 - 54



1



2



OPPOSITE PAGE

1

SABRINA BLOUSE /
Ribbon Red Pearl Polyester
sizes 26 - 54

CHRISTINE PANTS /
Pacific Navy
sizes 28-48

2

SHAKIRA WAISTCOAT /
Pacific Navy
sizes 26 - 54

KAYLA BLOUSE /
Ribbon Red Pearl Polyester
sizes 28 - 48

MALEBO PANTS /
Pacific Navy
sizes 28 - 54

THIS PAGE

3

BECKY BLOUSE /
Yacht Pearl Polyester
sizes 26 - 48

CAPRICE PANTS /
Pacific Navy
sizes 26 - 48

4

JIM BLAZER /
Pacific Navy
sizes 34 - 48

DEAN SHIRT /
Olympic Cotton Rich
sizes XS - 3XL

DYLAN PANTS /
Pacific Navy
sizes 28 - 48

4

3



1

2

NO COMPANY TOO SMALL

Companies, like people, come in all different sizes. We serve all companies of all sizes.

WANT TO ORDER?

Go to page 19

OPPOSITE PAGE

1

RAMONA DRESS /
Pacific Navy
sizes 26 - 48

2

RIHANNA DRESS /
Yacht Pearl Polyester
sizes 28 - 54

THIS PAGE

3

ARIANA JACKET /
Pacific Navy
sizes 28 - 44
KAYLA BLOUSE /
Pearl White Pearl Polyester
sizes 28 - 48



WHATSAPP 066 476 0105



CALL US 0861366011



EMAIL sales@imagemakers.co.za



RED SILKY STRETCH KNITS



SILKY STRETCH KNIT
/ Asian / White / Red



Comfortable to wear, drapes beautifully and flatters all body shapes and sizes.

Our complete range of Silky Stretch Knit colours and prints are on page 204

1

DAVID BLAZER /
Black Magic
sizes 32 - 48

DEAN SHIRT /
Plain White Cotton
Rich / sizes XS - 3XL

JAKE PANTS /
Black Magic
sizes 28 - 48

1



2

3

4

2
JASMIN DRESS /
Asian Silky Knit
sizes XS - 2XL

3
VALENTINA JACKET /
Black Silky Knit
sizes XS - 3XL
LYDIA T-SHIRT /
White Silky Knit
sizes XS - 3XL
HELGA PANTS/
Black Magic
sizes 28 - 54

4
LERATO TOP /
Red Silky Knit
sizes XS - 3XL
PHELISA PANTS /
Black Silky Knit
sizes XS - 3XL



7 GARMENTS = 16 OUTFITS

Use these garments as a guide to set up your own working wardrobe.



Stick to pieces in colours that all work together, that you can mix, match and layer for any situation or season.





5



6



7



8

YOUR MIX & MATCH OFFICE WEAR CHEAT SHEET!



9



10



11



12

EASY MORNINGS. No more endless hours wasted in the morning, deciding what to wear.



13



14



15



16

OUR NEUTRALS



To see our
entire selection of
Pearl Polyester colours
go to page 232

All Cotton Rich options
are on page 236

These are our suggested neutral
combinations. You can choose
your own.

LADIES
PEARL POLYESTER BLOUSES
/ Gucci / Desert



MENS + LADIES
COTTON RICH SHIRTS
/ Black Cotton
/ Plain White

LADIES
PEARL POLYESTER BLOUSES
/ Zig Zag / Desert



MENS + LADIES
COTTON RICH SHIRTS
/ Monaco
/ Ink Navy



1
ARIANA JACKET /
Grey Pinstripe
sizes 28 - 44
LYDIA T-SHIRT /
White Silky Knit
sizes XS - 3XL
MALEBO PANTS /
Grey Pinstripe
sizes 28 - 54

2
CHARLI JACKET /
Sandstone
sizes 28 - 54
LYDIA T-SHIRT /
White Silky Knit
sizes XS - 3XL
HANNA PANTS /
Sandstone
sizes 28 - 48

3
CHARLI JACKET /
Platinum
sizes 28 - 54
LYDIA T-SHIRT /
White Silky Knit
sizes XS - 3XL
HANNA PANTS /
Platinum
sizes 28 - 48

NEUTRAL



1
RAMONA DRESS /
Sandstone
sizes 26 - 48



2
ROSE BLOUSE /
Pearl Black Polyester
sizes 28 - 54
SUSAN SKIRT / Sandstone
sizes 28 - 54

GROUND

OFFICE STYLE, REFINED IN NEUTRALS



3

DAVID BLAZER /
Black Magic
sizes 32 - 48

DEAN SHIRT /
Plain White Cotton
Rich / sizes XS - 3XL

JAKE PANTS /
Black Magic
sizes 28 - 48

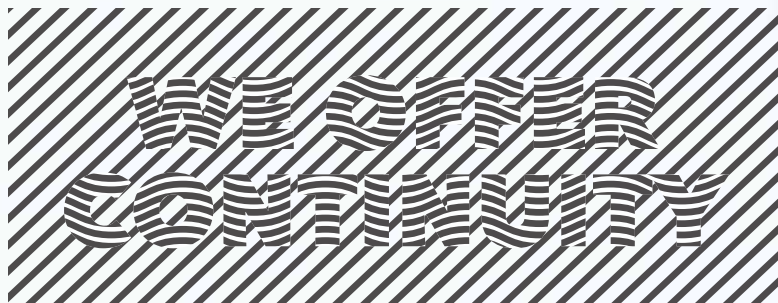
4

MICHELLE BLOUSE /
Gucci Pearl Polyester
sizes 28 - 54

5

PAMELA JACKET /
Black Magic
sizes 26 - 48

CHRISTINE PANTS /
Black Magic
sizes 28 - 48



So you are always able to repeat
an order for a new staff
member with confidence.





WHATSAPP 066 476 0105



CALL US 0861366011



EMAIL sales@imagemakers.co.za

THIS PAGE

1

SHAKIRA WAISTCOAT/
Black Magic
sizes 26 - 54
KIM BLOUSE/
Pearl White Pearl Polyester
sizes 26 - 54
CHRISTINE PANTS/
Black Magic
sizes 28 - 48

2

RAVEN DRESS/
Black Magic
sizes 28 - 48

OPPOSITE PAGE

3

CHARLI JACKET/
Sandstone
sizes 28 - 54

SHAKIRA WAISTCOAT/
Sandstone
sizes 26 - 54



SAVE MONEY

Your company pays!



3

BOLDLY



1

2

3

NEUTRAL

COMMAND THE ROOM IN NEUTRALS

OPPOSITE PAGE

1

CHARLI JACKET /
Suede Blue
sizes 28 - 54
VICTORIA SHIRT /
Monaco Cotton Rich
sizes 28 - 54

2

SABRINA BLOUSE /
Zig Zag Pearl Polyester
sizes 26 - 54
CAPRICE PANTS /
Suede Blue
sizes 26 - 48

3

KENDALL WAISTCOAT /
Suede Blue
sizes 28 - 54
SABRINA BLOUSE /
Zig Zag Pearl Polyester
sizes 26 - 54
MALEBO PANTS /
Suede Blue
sizes 28 - 54

THIS PAGE

4

JIM BLAZER /
Suede Blue
sizes 34 - 48
DEAN SHIRT /
Monaco Cotton Rich
sizes XS - 3XL
JAKE PANTS /
Suede Blue
sizes 28 - 48

5

BETH JACKET /
Suede Blue
sizes 28 - 54
ASTRID BLOUSE /
Nightfall Pearl Polyester
sizes 26 - 48
SUSAN SKIRT /
Suede Blue
sizes 28 - 54







4

5

OPPOSITE PAGE

1

CHARLI JACKET / Suede Blue
sizes 28 - 54

VICTORIA SHIRT /
Monaco Cotton Rich
sizes 28 - 54

2

SABRINA BLOUSE /
Zig Zag Pearl Polyester / sizes 26 - 54

3

JIM BLAZER / Suede Blue
sizes 34 - 48

DEAN SHIRT / Monaco Cotton Rich
sizes XS - 3XL

JAKE PANTS / Suede Blue
sizes 28 - 48

THIS PAGE

4

KHOSI TOP / Suede Blue
sizes 28 - 54

MALEBO PANTS / Suede Blue
sizes 28 - 54

5

KENDALL WAISTCOAT / Suede Blue
sizes 28 - 54

SABRINA BLOUSE / Zig Zag
Pearl Polyester / sizes 26 - 54



THIS PAGE

1

BETH JACKET / Suede Blue
sizes 28 - 54

RAMONA DRESS / Suede Blue
sizes 26 - 48

2

JIM BLAZER / Suede Blue
sizes 34 - 48

DEAN SHIRT / Monaco
Cotton Rich / sizes XS - 3XL

JAKE PANTS / Suede Blue
sizes 28 - 48

OPPOSITE PAGE

3

ELMARIE DRESS / Zig Zag
Pearl Polyester / sizes 28 - 54



WE DESIGN AND MANUFACTURE

Made in our factory by
South Africans for South
Africa and abroad.



WHATSAPP 066 476 0105



CALL US 0861366011



EMAIL sales@imagemakers.co.za



NO IRON REQUIRED

All garments are easy
care. Just wash and wear
and go, go, go!

OUR BLUES



Here are our suggested blue blouse and shirt combinations. Enjoy creating your own.

LADIES
PEARL POLYESTER BLOUSES
/ Bluebell / True Blue



MENS + LADIES
COTTON RICH SHIRTS
/ Topaz
/ Hamilton

LADIES
PEARL POLYESTER BLOUSES
/ Picasso / Sapphire



MENS + LADIES
COTTON RICH SHIRTS
/ Cobalt
/ Azure

LADIES
PEARL POLYESTER BLOUSES
/ White Coralee / Navy Coralee



MENS + LADIES
COTTON RICH SHIRTS
/ Ink Navy
/ Chelsea

To see our
entire selection of
Pearl Polyester options
are on page 232

All Cotton Rich options
are on page 236

LADIES
PEARL POLYESTER BLOUSES
/ Premier / Pearl White



MENS + LADIES
COTTON RICH SHIRTS
/ Ink Navy
/ Plain White

SILKY STRETCH KNIT
FOR LADIES BLOUSES & DRESSES

Our **Silky Stretch Knit Range**
offers soft, stretchy fabric with
a luxurious drape, designed to
flatter all body shapes.

LADIES
SILKY STRETCH KNIT
/ Premier / White / Navy





1
BETH JACKET /
Platinum / sizes 28 - 54
MBALI SKIRT /
Platinum / sizes 28 - 54



2
DAVID BLAZER /
Platinum / sizes 32 - 48
DEAN SHIRT /
Cobalt Cotton Rich / sizes XS - 3XL
JAKE PANTS /
Platinum sizes 28 - 48



3
PAMELA JACKET /
Platinum / sizes 26 - 48
LIANDRI SHIRT /
Hamilton Cotton Rich / sizes 26 - 54
HELGA PANTS /
Platinum / sizes 28 - 54

SKYLINE STYLE

SOFT BLUES, STRONG IMPACT



4
CHARLI JACKET /
Platinum / sizes 28 - 54
SUSAN SKIRT /
Platinum / sizes 28 - 54



5
HANNA PANTS / Platinum / sizes 28 - 48



6
DAVID BLAZER / Platinum / sizes 32 - 48
DEAN SHIRT / Plain White Cotton Rich / sizes XS - 3XL
JAKE PANTS / Platinum / sizes 28 - 48

NO COMPANY TOO SMALL

Companies like people, come
in all different sizes. We serve
all companies of all sizes.

THIS PAGE

1

MBALI SKIRT /
Platinum
sizes 28 - 54

OPPOSITE PAGE

2

PAMELA JACKET /
Platinum
sizes 26 - 48

VICTORIA SHIRT /
Topaz Cotton Rich
sizes 28 - 54

3

DAVID BLAZER /
Platinum
sizes 32 - 48

DEAN SHIRT /
Hamilton Cotton Rich
sizes XS - 3XL

JAKE PANTS /
Platinum
sizes 28 - 48

4

CIARA DRESS /
Bluebell Pearl Polyester
sizes 26 - 48







1

2

ALWAYS OFFICE READY

Trusted by over
21500 companies for
over 42 years

WANT TO ORDER?

Go to page 19

OPPOSITE PAGE

1

PAMELA JACKET /
Platinum / sizes 26 - 48

LIANDRI SHIRT /
Hamilton Cotton Rich
sizes 26 - 54

2

DAVID BLAZER /
Platinum / sizes 32 - 48

ETHAN SHIRT /
Cobalt Cotton Rich / sizes XS - XL

DYLAN PANTS /
Platinum / sizes 28 - 48

THIS PAGE

3

HANNA PANTS /
Platinum / sizes 28 - 48



WHATSAPP 066 476 0105



CALL US 0861366011



EMAIL sales@imagemakers.co.za

COBALT



1

PAMELA JACKET / Anchor
sizes 26 - 48
HANNA PANTS / Anchor
sizes 28 - 48

2

ROSE BLOUSE / Picasso Pearl Polyester
sizes 28 - 54

3

DAVID BLAZER / Anchor
sizes 32 - 48
ETHAN SHIRT / Cobalt Cotton Rich
sizes XS - XL
DYLAN PANTS / Anchor
sizes 28 - 48

CRUSH

MAKE WAVES IN ELECTRIC BLUE



4

BETH JACKET / Anchor
sizes 28 - 54
ROSE BLOUSE / Picasso Pearl Polyester
sizes 28 - 54
MBALI SKIRT / Anchor
sizes 28 - 54



5

ARIANA JACKET /
Anchor / sizes 28 - 44
CAPRICE PANTS / Anchor
sizes 26 - 48



6

RAVEN DRESS / Anchor
sizes 28 - 48

TRUST US

The key to earning
your clients trust,
lies in our process.

WANT TO ORDER?

Go to page 19

THIS PAGE

1

BETH JACKET / Anchor

sizes 28 - 54

ROSE BLOUSE / Pearl White Pearl Polyester

sizes 28 - 54

2

JIM BLAZER / Anchor

sizes 34 - 48

DEAN SHIRT / Cobalt Cotton Rich

sizes XS - 3XL

JAKE PANTS / Anchor

sizes 28 - 48

OPPOSITE PAGE

3

ROSE BLOUSE / Picasso Pearl Polyester

sizes 28 - 54

4

ELMARIE DRESS / Sapphire Pearl Polyester

sizes 28 - 54

5

PAMELA JACKET / Anchor

sizes 26 - 48

SHAKIRA WAISTCOAT / Anchor

sizes 26 - 54

KOURTNEY BLOUSE / Picasso Pearl Polyester

sizes 26 - 54

MALEBO PANTS / Anchor

sizes 28 - 54





POWER WOMAN™

4

OPPOSITE PAGE

1

DAVID BLAZER / Anchor / sizes 32 - 48

ETHAN SHIRT /

Cobalt Cotton Rich / sizes XS - XL

DYLAN PANTS / Anchor / sizes 28 - 48

2

ARIANA JACKET / Anchor / sizes 28 - 44

CAPRICE PANTS / Anchor / sizes 26 - 48

3

RAVEN DRESS / Anchor / sizes 28 - 48

THIS PAGE

4

PAMELA JACKET / Anchor / sizes 26 - 48

HANNA PANTS / Anchor / sizes 28 - 48

ANCHOR
SUITING
(Magnified)

NAVY RULES

WORKWEAR THAT MEANS BUSINESS

THIS PAGE

1

RAVEN /
Navy Pinstripe
sizes 28 - 48

2

BETH JACKET /
Navy Pinstripe
sizes 28 - 54
HANNA PANTS /
Navy Pinstripe
sizes 28 - 48

OPPOSITE PAGE

3

PAMELA JACKET /
Navy Pinstripe
sizes 26 - 48
KOURTNEY BLOUSE /
Pearl White Pearl Polyester
sizes 28 - 54
HANNA PANTS /
Navy Pinstripe
sizes 28 - 48

4

DAVID BLAZER /
Navy Pinstripe
sizes 32 - 48
ETHAN SHIRT /
Plain White Cotton Rich
sizes XS - XL
DYLAN PANTS /
Navy Pinstripe
sizes 28 - 48

5

BECKY BLOUSE /
White Coralee
Pearl Polyester sizes 26 - 48







SAVE TIME

Work hard. Dress easy.

NOT SURE ABOUT YOUR SIZE?

See our Ladies size chart
on page 226 and
Mens size chart
on page 228.

OPPOSITE PAGE 1

PAMELA JACKET /
Navy Pinstripe
sizes 26 - 48
KOURTNEY BLOUSE /
Pearl White Pearl Polyester
sizes 28 - 54
HANNA PANTS /
Navy Pinstripe
sizes 28 - 48

2

MALEBO PANTS /
Navy Pinstripe
sizes 28 - 54

3

DAVID BLAZER /
Navy Pinstripe
sizes 32 - 48
ETHAN SHIRT /
Plain White Cotton Rich
sizes XS - XL
DYLAN PANTS /
Navy Pinstripe
sizes 28 - 48

THIS PAGE

4

BECKY BLOUSE /
White Coralee
Pearl Polyester sizes 26 - 48

5

RAVEN /
Navy Pinstripe
sizes 28 - 48





1

2

OPPOSITE PAGE

1

ELMARIE DRESS /
Navy Coralee Pearl Polyester
sizes 28 - 54

2

JIM BLAZER /
Suede Blue
sizes 34 - 48

DEAN SHIRT /
Chelsea Cotton Rich
sizes XS - 3XL

JAKE PANTS / Suede Blue
sizes 28 - 48

THIS PAGE

3

DAVID BLAZER /
Navy Pinstripe
sizes 32 - 48

ETHAN SHIRT /
Plain White Cotton Rich
sizes XS - XL

DYLAN PANTS /
Navy Pinstripe
sizes 28 - 48

4

CHANEL BLOUSE /
Pearl White Polyester
sizes 28 - 48

THE NAVY EDIT



1
LOUISE DRESS /
Anchor / sizes 28 - 54



2
ANYA BLOUSE /
Premier Pearl Polyester
sizes 26 - 54



3
CAPRICE PANTS /
Anchor / sizes 26 - 48

THE ULTIMATE OFFICE CHIC HUE



4
JIM BLAZER /
Anchor / sizes 34 - 48
DEAN SHIRT /
Plain White Cotton Rich / sizes XS - 3XL
JAKE PANTS /
Anchor / sizes 28 - 48



5
SABRINA BLOUSE /
Premier Pearl Polyester
sizes 26 - 54
MALEBO PANTS / Anchor
sizes 28 - 54



1



2



3

4

OPPOSITE PAGE

1

SABRINA BLOUSE /
Premier Pearl Polyester
sizes 26 - 54

CHRISTINE PANTS /
Anchor
sizes 28 - 48

2

CHANEL BLOUSE /
Pearl White Pearl Polyester
sizes 28 - 48

HELGA PANTS /
Anchor
sizes 28 - 54

THIS PAGE

3

JIM BLAZER /
Anchor
sizes 34 - 48

DEAN SHIRT /
Plain White Cotton Rich
sizes XS - 3XL

JAKE PANTS /
Anchor
sizes 28 - 48

4

LOUISE DRESS /
Anchor
sizes 28 - 54

WE OFFER CONTINUITY

So you are always able to repeat
an order for a new staff
member with confidence.



ANCHOR
SUITING
(Magnified)



WHATSAPP 066 476 0105



CALL US 0861366011



EMAIL sales@imagemakers.co.za



THIS PAGE

1

CAPRICE PANTS /
Anchor / sizes 26 - 48

2

ANYA BLOUSE /
Premier Pearl Polyester
sizes 26 - 54

1

2

BLUE SILKY STRETCH KNITS



SILKY STRETCH KNIT
/ Premier / White / Navy



In addition to our Pearl Polyester styles, we offer a Silky Stretch Knit range. Exceptionally comfortable to wear, drapes beautifully and flatters all body shapes and sizes.

Our complete range of Silky Stretch Knit colours and prints are on page 204



HANNA PANTS/
Pacific Navy
sizes 28 - 48



VALENTINA JACKET /
Navy Silky Knit
sizes XS - 3XL
LYDIA T-SHIRT /
White Silky Knit
sizes XS - 3XL
HELGA PANTS/
Pacific Navy
sizes 28 - 54

LERATO TOP /
Premier Silky Knit
sizes XS - 3XL
CHRISTINE PANTS/
Pacific Navy
sizes 28 - 48



8 GARMENTS = 30 OUTFITS



PAMELA JACKET



SABRINA BLOUSE



SHAKIRA WAISTCOAT



ASTRID BLOUSE



KAYLA BLOUSE



NAOMI BLOUSE



PANTS



SUSAN SKIRT



Use these garments as a guide to set up your own working wardrobe.

1



8 GARMENTS = A WHOLE MONTH OF OUTFITS!



EASY MORNINGS. No more endless hours wasted in the morning, deciding what to wear.





14



15



16

YOU DON'T HAVE TO SPEND A FORTUNE TO LOOK YOUR BEST EVERYDAY!



17



18



19

Stick to pieces in colours that all work together, that you can mix, match and layer for any situation or season.



20



21



22



23



24



25

MIX, MATCH & SAVE!



26



27

Mix and match garments in your choice of colours and styles.



28



29



30



7 GARMENTS = 12 OUTFITS

Use these garments as a guide to set up your own working wardrobe.



MORE BANG FOR YOUR BUCK! INVEST IN KEY MIX & MATCH PIECES.





4



5



6



7



8



9



10



11



12

OUR GREENS



Here are our suggested green blouse and shirt combinations. Enjoy creating your own.

LADIES
PEARL POLYESTER BLOUSES
/ Elenor / Pistachio



MENS + LADIES
COTTON RICH SHIRTS
/ Gemini
/ Topaz

LADIES
PEARL POLYESTER BLOUSES
/ Peppermint / Pearl White



MENS + LADIES
COTTON RICH SHIRTS
/ Sage
/ Meadow

LADIES
PEARL POLYESTER BLOUSES
/ Harvard / Moss



MENS + LADIES
COTTON RICH SHIRTS
/ Plain White
/ Ink Navy

To see our
entire selection of
Pearl Polyester options
are on page 232

All Cotton Rich options
are on page 236

LADIES
PEARL POLYESTER BLOUSES
/ Caesar / Emerald



MENS + LADIES
COTTON RICH SHIRTS
/ Amazon
/ Ink Navy

SILKY STRETCH KNIT
FOR LADIES BLOUSES & DRESSES

Our **Silky Stretch Knit Range**
offers soft, stretchy fabric with
a luxurious drape, designed to
flatter all body shapes.

LADIES
SILKY STRETCH KNIT
/ Caesar / Jade / Navy







EVERGREEN ENERGY

STYLE THAT LASTS ALL SEASONS

OPPOSITE PAGE

1

SHAKIRA WAISTCOAT /
Suede Blue
sizes 26 - 54

KIM BLOUSE / Pistachio
Pearl Polyester
sizes 26 - 54

2

NAOMI BLOUSE /
Elenor Pearl Polyester
sizes 28 - 54

SUSAN SKIRT /
Suede Blue
sizes 28 - 54

3

RAMONA DRESS /
Suede Blue
sizes 26 - 48

THIS PAGE

4

KAYLA BLOUSE /
Pistachio
Pearl Polyester
sizes 28 - 48

HANNA PANTS /
Suede Blue
sizes 28 - 48

5

SABRINA BLOUSE /
Elenor
Pearl Polyester
sizes 26 - 54

HELGA PANTS /
Suede Blue
sizes 28 - 54

THIS PAGE

1

SHAKIRA WAISTCOAT /
Suede Blue
sizes 26 - 54
KIM BLOUSE / Pistachio
Pearl Polyester
sizes 26 - 54

2

NAOMI BLOUSE /
Elenor Pearl Polyester
sizes 28 - 54
SUSAN SKIRT /
Suede Blue
sizes 28 - 54

OPPOSITE PAGE

3

RAMONA DRESS /
Suede Blue
sizes 26 - 48

4

KAYLA BLOUSE /
Pistachio
Pearl Polyester
sizes 28 - 48
HANNA PANTS /
Suede Blue
sizes 28 - 48

5

SABRINA BLOUSE /
Elenor
Pearl Polyester
sizes 26 - 54
HELGA PANTS /
Suede Blue
sizes 28 - 54





3

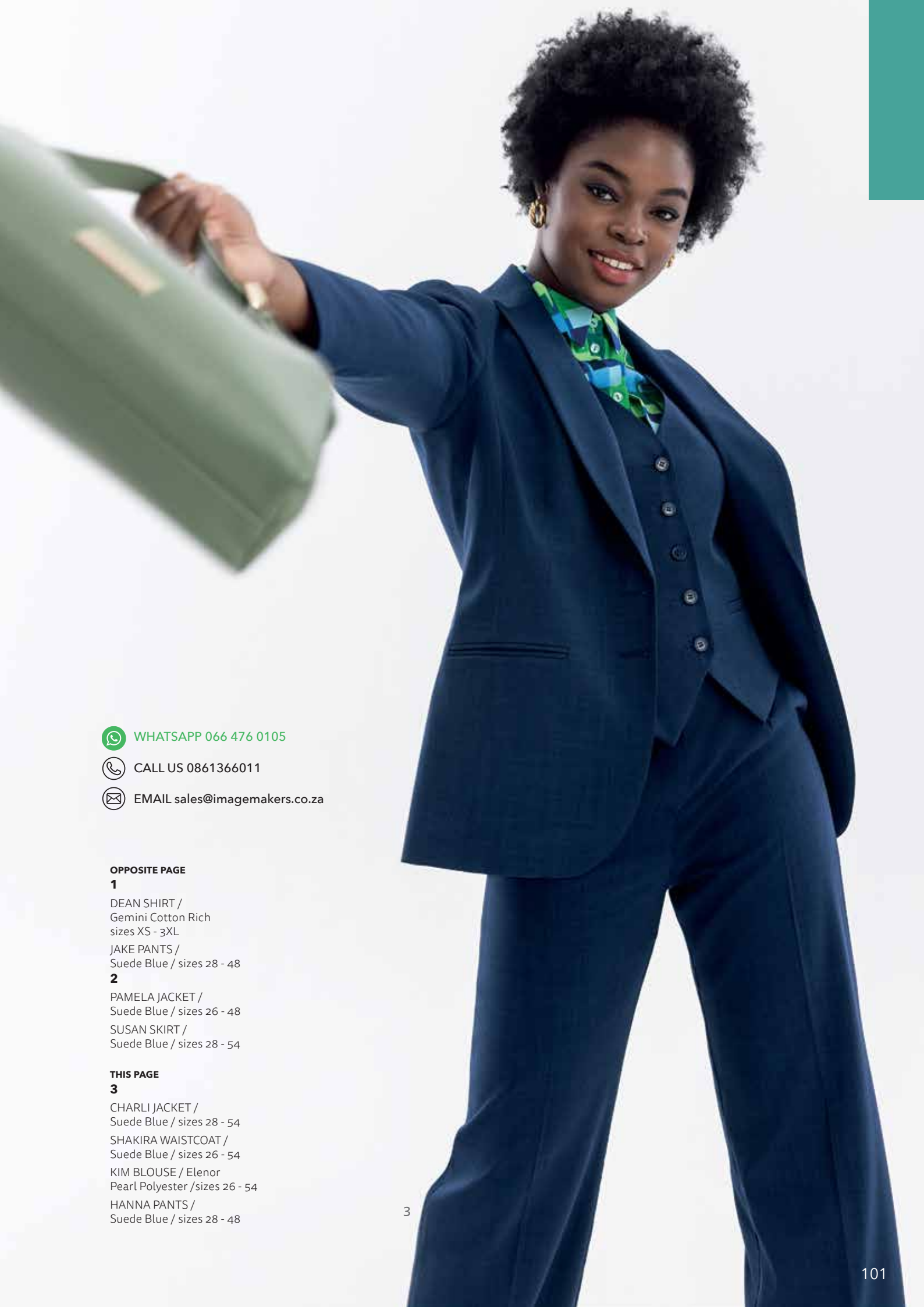
4

5



1

2



WHATSAPP 066 476 0105



CALL US 0861366011



EMAIL sales@imagemakers.co.za

OPPOSITE PAGE

1

DEAN SHIRT /
Gemini Cotton Rich
sizes XS - 3XL

JAKE PANTS /
Suede Blue / sizes 28 - 48

2

PAMELA JACKET /
Suede Blue / sizes 26 - 48

SUSAN SKIRT /
Suede Blue / sizes 28 - 54

THIS PAGE

3

CHARLI JACKET /
Suede Blue / sizes 28 - 54

SHAKIRA WAISTCOAT /
Suede Blue / sizes 26 - 54

KIM BLOUSE / Elenor
Pearl Polyester / sizes 26 - 54

HANNA PANTS /
Suede Blue / sizes 28 - 48

MINT CONDITION



1

PAMELA JACKET / Shadow / sizes 26 - 48
KOURTNEY BLOUSE /
Pearl White Pearl Polyester / sizes 26 - 54
CAPRICE PANTS / Shadow / sizes 26 - 48

2

KAYLA BLOUSE /
Peppermint Pearl Polyester / sizes 28 - 48
CAPRICE PANTS / Shadow / sizes 26 - 48

3

LOUISE DRESS /
Shadow / sizes 28 - 54

A REFRESHING WARDROBE RESET



4
JIM BLAZER / Shadow / sizes 34 - 48
DEAN SHIRT /
Meadow Cotton Rich / sizes XS - 3XL
JAKE PANTS / Shadow / sizes 28 - 48



5
CHARLI JACKET / Shadow / sizes 28 - 54
LEXI SHIRT / Sage Cotton Rich / sizes 26 - 54
CHRISTINE PANTS / Shadow / sizes 28 - 48



1
CHARLI JACKET /
Shadow
sizes 28 - 54
LEXI SHIRT /
Sage Cotton Rich
sizes 26 - 54
CHRISTINE PANTS /
Shadow
sizes 28 - 48



2
SABRINA BLOUSE /
Peppermint Pearl Polyester
sizes 26 - 54
HELGA PANTS /
Shadow
sizes 28 - 54

3
JIM BLAZER / Shadow
sizes 34 - 48
DEAN SHIRT /
Meadow Cotton Rich
sizes XS - 3XL
JAKE PANTS / Shadow
sizes 28 - 48

2

3



1

2

POWER WOMAN™



WHATSAPP 066 476 0105



CALL US 0861366011



EMAIL sales@imagemakers.co.za



3

SHADOW
SUITING
(Magnified)

OPPOSITE PAGE

1

KAYLA BLOUSE /
Peppermint Pearl Polyester
sizes 28 - 48

CAPRICE PANTS /
Shadow
sizes 26 - 48

2

LOUISE DRESS /
Shadow
sizes 28 - 54

THIS PAGE

3

PAMELA JACKET /
Shadow
sizes 26 - 48

KOURTNEY BLOUSE /
Pearl White Pearl Polyester
sizes 26 - 54

CAPRICE PANTS /
Shadow
sizes 26 - 48

MOSS MODE



CALM, COOL AND COLLECTED

OPPOSITE PAGE

1

PAMELA JACKET /
Navy Pin Dot
sizes 26 - 48

KIM BLOUSE /
Harvard Pearl Polyester
sizes 26 - 54

HELGA PANTS /
Navy Pin Dot
sizes 28 - 54

2

JIM BLAZER /
Navy Pin Dot
sizes 34 - 48

ETHAN SHIRT /
Plain White Cotton Rich
sizes XS - XL

JAKE PANTS /
Navy Pin Dot
sizes 28 - 48

3

CHARLI JACKET /
Navy Pin Dot
sizes 28 - 54

KIM BLOUSE /
Moss Pearl Polyester
sizes 26 - 54

MALEBO PANTS /
Navy Pin Dot
sizes 28 - 54

THIS PAGE

4

BETH JACKET /
Navy Pin Dot
sizes 28 - 54

MALEBO PANTS /
Navy Pin Dot
sizes 28 - 54

5

SHAKIRA WAISTCOAT /
Navy Pin Dot
sizes 26 - 54

KOURTNEY BLOUSE /
Moss Pearl Polyester
sizes 26 - 54

HANNA PANTS /
Navy Pin Dot
sizes 28 - 48



4



5

ENDLESS POSSIBILITIES

You may be part of a team, but you are also an individual. Own your own style with 6 colour palettes, and over 50 styles - we've got your look!

THIS PAGE

1

CHRISTINE PANTS /
Navy Pin Dot
sizes 28 - 48

2

BETH JACKET /
Navy Pin Dot
sizes 28 - 54

MALEBO PANTS /
Navy Pin Dot
sizes 28 - 54

OPPOSITE PAGE

3

JIM BLAZER /
Navy Pin Dot
sizes 34 - 48

ETHAN SHIRT /
Plain White Cotton Rich
sizes XS - XL

JAKE PANTS /
Navy Pin Dot
sizes 28 - 48

4

KOURTNEY BLOUSE /
Harvard Pearl Polyester
sizes 26 - 54

HANNA PANTS /
Navy Pin Dot
sizes 28 - 48





3

4



1

2

TRUST US

The key to earning
your clients trust,
lies in our process.

WANT TO ORDER?

Go to page 19

NAVY PIN DOT
SUITING
(Magnified)

OPPOSITE PAGE

1

KAYLA BLOUSE /
Harvard Pearl Polyester
sizes 28 - 48

CHRISTINE PANTS /
Navy Pin Dot
sizes 28 - 48

2

RAMONA DRESS /
Navy Pin Dot
sizes 26 - 48

THIS PAGE

3

SHAKIRA WAISTCOAT /
Navy Pin Dot
sizes 26 - 54

KOURTNEY BLOUSE /
Moss Pearl Polyester
sizes 26 - 54

HANNA PANTS /
Navy Pin Dot
sizes 28 - 48

GREEN GLAMOUR



1
KOURTNEY BLOUSE /
Emerald Pearl Polyester / sizes 26 - 54

2
JIM BLAZER /
Pacific Navy / sizes 34 - 48
DEAN SHIRT /
Amazon Cotton Rich / sizes XS - 3XL
JAKE PANTS /
Pacific Navy / sizes 28 - 48

3
SHAKIRA WAISTCOAT /
Pacific Navy / sizes 26 - 54
VICTORIA SHIRT /
Amazon Cotton Rich / sizes 28 - 54
HANNA PANTS /
Pacific Navy / sizes 28 - 48

LUSH, BOLD, AND UNFORGETTABLE



4
ROSE BLOUSE /
Emerald Pearl Polyester
sizes 28 - 54
CHRISTINE PANTS /
Pacific Navy / sizes 28 - 48

5
SUSAN SKIRT /
Pacific Navy / sizes 28 - 54

6
CHRISTINE PANTS /
Pacific Navy / sizes 28 - 48



PERFECTLY SIZED

Imagemakers makes clothes to suit every shape. We have the perfect fit for you, from top to toe.

NOT SURE ABOUT YOUR SIZE?

See our Ladies size chart on page 226 and Mens size chart on page 228.

THIS PAGE

1

ROSE BLOUSE /
Emerald Pearl Polyester
sizes 28 - 54

HANNA PANTS /
Pacific Navy
sizes 28 - 48

OPPOSITE PAGE

2

JIM BLAZER /
Pacific Navy
sizes 34 - 48

DEAN SHIRT /
Plain White Cotton Rich
sizes XS - 3XL

JAKE PANTS /
Pacific Navy
sizes 28 - 48

3

CHRISTINE PANTS /
Pacific Navy
sizes 28 - 48

4

SUSAN SKIRT /
Pacific Navy
sizes 28 - 54



2

3

4



1

2

OUR SERVICES GO BEYOND TRENDS & THREADS

OPPOSITE PAGE

1

CHANEL BLOUSE /
Caesar Pearl Polyester
sizes 28 - 48

2

JIM BLAZER /
Pacific Navy
sizes 34 - 54

DEAN SHIRT /
Plain White Cotton Rich
sizes XS - 3XL

JAKE PANTS /
Pacific Navy
sizes 28 - 48

THIS PAGE

3

KOURTNEY BLOUSE /
Emerald Pearl Polyester
sizes 26 - 54

4

SHAKIRA WAISTCOAT /
Pacific Navy
sizes 26 - 54

VICTORIA SHIRT /
Amazon Cotton Rich
sizes 28 - 54

HANNA PANTS /
Pacific Navy
sizes 28 - 48



WHATSAPP 066 476 0105



CALL US 0861366011



EMAIL sales@imagemakers.co.za

GREEN SILKY STRETCH KNITS



SILKY STRETCH KNIT
/ Caesar / Jade / Navy



In addition to our Pearl Polyester styles, we offer a Silky Stretch Knit range. Exceptionally comfortable to wear, drapes beautifully and flatters all body shapes and sizes.

Our complete range of Silky Stretch Knit colours and prints are on page 204



LERATO TOP /
Navy Silky Knit / sizes XS - 3XL
HELGA PANTS/
Pacific Navy / sizes 28 - 54



VALENTINA JACKET /
Navy Silky Knit
sizes XS - 3XL
LYDIA T-SHIRT /
Caesar Silky Knit
sizes XS - 3XL
HELGA PANTS/
Pacific Navy / sizes 28 - 54

JASMIN DRESS /
Caesar Silky Knit
sizes XS - 2XL



7 GARMENTS = 12 OUTFITS

Use these garments as a guide to set up your own working wardrobe.



YOUR MIX & MATCH OFFICE WEAR CHEAT SHEET!





4



5



6



7



8



9



10



11



12

OUR MONOCHROMES



Here are our suggested
monochrome blouse and
shirt combinations.

Enjoy creating your own.

LADIES
PEARL POLYESTER STYLES
/ Berkeley / Pearl White

LADIES
PEARL POLYESTER STYLES
/ Stanford / Lilac Grey



MENS + LADIES
COTTON RICH SHIRTS
/ Kingston
/ Plain White



MENS + LADIES
COTTON RICH SHIRTS
/ Grey Gingham
/ Plain White

To see our
entire selection of
Pearl Polyester options
are on page 232

All Cotton Rich options
are on page 236

im **imagemakers**
CORPORATE FASHION FOR EVERY BUSINESS

SILKY STRETCH KNIT
FOR LADIES BLOUSES & DRESSES

Our **Silky Stretch Knit Range**
offers soft, stretchy fabric with
a luxurious drape, designed to
flatter all body shapes.

LADIES
PEARL POLYESTER STYLES
/ White Chain / Black Chain



MENS + LADIES
COTTON RICH SHIRTS
/ Black Cotton
/ Feathers

LADIES
SILKY STRETCH KNIT
/ Graphic / White / Black



CLASSIC



CONTRAST

BLACK AND WHITE FOR EVERY PROFESSIONAL

OPPOSITE PAGE

1

CIARA DRESS /
Berkeley Pearl Polyester
sizes 26 - 48

2

JIM BLAZER /
Gunmetal Grey
sizes 34 - 54

DEAN SHIRT /
Plain White Cotton Rich
sizes XS - 3XL

JAKE PANTS /
Gunmetal Grey
sizes 28 - 48

3

KIM BLOUSE /
Berkeley
Pearl Polyester
sizes 26 - 54

HELGA PANTS /
Gunmetal Grey
sizes 28 - 54

THIS PAGE

4

KENDALL WAISTCOAT /
Gunmetal Grey
sizes 28 - 54

SABRINA BLOUSE /
Pearl White
Pearl Polyester
sizes 26 - 54

MALEBO PANTS /
Gunmetal Grey
sizes 28 - 54

5

PAMELA JACKET /
Gunmetal Grey
sizes 26 - 48

SHAKIRA WAISTCOAT /
Gunmetal Grey
sizes 26 - 54

CHANEL BLOUSE /
Pearl White Pearl Polyester
sizes 28 - 48

SUSAN SKIRT /
Gunmetal Grey
sizes 28 - 54



NO COMPANY TOO SMALL

Companies like people, come in all different sizes. We serve all companies of all sizes.

WANT TO ORDER?

Go to page 19

THIS PAGE

1

KIM BLOUSE /
Berkeley Pearl Polyester
sizes 26 - 54

MALEBO PANTS /
Gunmetal Grey
sizes 28 - 54

OPPOSITE PAGE

2

KAYLA BLOUSE /
Pearl White Pearl Polyester
sizes 28 - 48

3

CIARA DRESS /
Berkeley Pearl Polyester
sizes 26 - 48

4

JIM BLAZER / Gunmetal Grey
sizes 34 - 48

DEAN SHIRT /
Plain White Cotton Rich
sizes XS - 3XL

JAKE PANTS / Gunmetal Grey
sizes 28 - 48





2

3

4



1

2

PERFECTLY SIZED

Imagemakers makes clothes to suit every shape. We have the perfect fit for you, from top to toe.

NOT SURE ABOUT YOUR SIZE?

See our Ladies size chart on page 226 and Mens size chart on page 228.

OPPOSITE PAGE

1

JIM BLAZER / Gunmetal Grey
sizes 34 - 48

DEAN SHIRT / Kingston
Cotton Rich / sizes XS - 3XL

JAKE PANTS / Gunmetal Grey
sizes 28 - 48

2

PAMELA JACKET / Gunmetal Grey
sizes 26 - 48

SHAKIRA WAISTCOAT / Gunmetal Grey
sizes 26 - 54

CHANEL BLOUSE / Pearl White
Pearl Polyester / sizes 28 - 48

SUSAN SKIRT / Gunmetal Grey
sizes 28 - 54

THIS PAGE

3

SABRINA BLOUSE / Berkeley
Pearl Polyester / sizes 26 - 54



WHATSAPP 066 476 0105



CALL US 0861366011



EMAIL sales@imagemakers.co.za



POWER PRINT



1
JIM BLAZER /
Black Magic / sizes 34 - 48
DEAN SHIRT /
Plain White Cotton Rich / sizes XS - 3XL
JAKE PANTS /
Black Magic / sizes 28 - 48

2
ARIANA JACKET / Black Magic / sizes 28 - 44
KOURTNEY BLOUSE / Pearl White Pearl Polyester / sizes 26 - 54
CAPRICE PANTS / Black Magic / sizes 26 - 48

3
HELGA PANTS / Black Magic
sizes 28 - 54

OFFICE CHIC, BOLD & GRAPHIC



4
RAMONA DRESS / Black Magic
sizes 26 - 48

5
MALEBO PANTS / Black Magic / sizes 28 - 54

6
KENDALL WAISTCOAT/ Black Magic / sizes 28 - 54
ASTRID BLOUSE / Pearl White Pearl Polyester / sizes 26 - 48
CAPRICE PANTS / Black Magic / sizes 28 - 48



THIS PAGE

- 1**
PAMELA JACKET /
Black Magic
sizes 26 - 48
- KAYLA BLOUSE /
Pearl White Pearl Polyester
sizes 28 - 48
- HELGA PANTS /
Black Magic
sizes 28 - 54
- 2**
ARIANA JACKET /
Black Magic
sizes 28 - 44
- KOURTNEY BLOUSE /
Pearl White Pearl Polyester
sizes 26 - 54
- CAPRICE PANTS /
Black Magic
sizes 26 - 48

OPPOSITE PAGE

- 3**
HELGA PANTS /
Black Magic
sizes 28 - 54
- 4**
JIM BLAZER / Black Magic
sizes 34 - 48
- DEAN SHIRT / Plain White
Cotton Rich / sizes XS - 3XL
- JAKE PANTS / Black Magic
sizes 28 - 48
- 5**
KOURTNEY BLOUSE /
Studio Pearl Polyester
sizes 26 - 54
- CHRISTINE PANTS /
Black Magic
sizes 28 - 48







THIS PAGE

1
ROSE BLOUSE /
Pearl White Pearl Polyester
sizes 28 - 54
HANNA PANTS /
Black Magic
sizes 28 - 48

2
KOURTNEY BLOUSE /
Studio Pearl Polyester
sizes 26 - 54
CHRISTINE PANTS /
Black Magic
sizes 28 - 48

OPPOSITE PAGE

3
SUSAN SKIRT /
Black Magic
sizes 28 - 54

PERFECTLY SIZED

Imagemakers makes clothes to suit every shape. We have the perfect fit for you, from top to toe.

NOT SURE ABOUT YOUR SIZE?

See our Ladies size chart on page 226 and Mens size chart on page 228.



MONOTONE

A MODERN TAKE ON OFFICE ATTIRE



1
MBALI SKIRT/
Gunmetal Grey / sizes 28 - 54



2
JACOB WAISTCOAT /
Gunmetal Grey / sizes 34 - 54
DEAN SHIRT /
Grey Gingham Cotton Rich / sizes XS - 3XL
JAKE PANTS /
Gunmetal Grey / sizes 28 - 48



3
HANNA PANTS /
Gunmetal Grey
sizes 28 - 48

EXECUTIVE



4
SUSAN SKIRT/
Gunmetal Grey / sizes 28 - 54



5
SUSAN SKIRT/
Gunmetal Grey / sizes 28 - 54



6
SHAKIRA WAISTCOAT /
Gunmetal Grey / sizes 26- 54
KAYLA BLOUSE /
Stanford Pearl Polyester / sizes 28 - 48
SUSAN SKIRT/
Gunmetal Grey / sizes 28 - 54

WE DESIGN AND MANUFACTURE

Made in our factory by
South Africans for South
Africa and abroad.



WHATSAPP 066 476 0105



CALL US 0861366011



EMAIL sales@imagemakers.co.za

THIS PAGE

1

SHAKIRA WAISTCOAT /
Gunmetal Grey
sizes 26 - 54

KAYLA BLOUSE /
Stanford Pearl Polyester
sizes 28 - 48

2

SUSAN SKIRT /
Gunmetal Grey
sizes 28 - 54

OPPOSITE PAGE

3

SUSAN SKIRT /
Gunmetal Grey
sizes 28 - 54

4

MBALI SKIRT /
Gunmetal Grey
sizes 28 - 54



1

2



3

4

POWER MAN™



NO COMPANY TOO SMALL

Companies like people, come in all different sizes. We serve all companies of all sizes.



MACHINE WASHABLE

All garments are machine washable, including our blazers and jackets.

OPPOSITE PAGE

1

KAYLA BLOUSE /
Lilac Grey Pearl Polyester
sizes 28 - 48

2

JACOB WAISTCOAT /
Gunmetal Grey
sizes 34 - 54

DEAN SHIRT /
Grey Gingham Cotton Rich
sizes XS - 3XL

JAKE PANTS /
Gunmetal Grey
sizes 28 - 48

THIS PAGE

3

HANNA PANTS /
Gunmetal Grey
sizes 28 - 48



SLEEK



1

SUSAN SKIRT /
Shadow / sizes 28 - 54

2

MBALI SKIRT / Shadow / sizes 28 - 54

SIMPLICITY

STAND OUT WITH SIMPLE SOPHISTICATION



3

JACOB WAISTCOAT / Shadow / sizes 34 - 54
DEAN SHIRT / Feathers Cotton Rich / sizes XS - 3XL
JAKE PANTS / Shadow / sizes 28 - 48

4

SHAKIRA WAISTCOAT /
Shadow / sizes 26 - 54

5

ARIANA JACKET / Shadow / sizes 28 - 44
RAMONA DRESS / Shadow / sizes 26 - 48

GUARANTEED QUALITY

All our garments are designed and manufactured by Imagemakers in South Africa.

THIS PAGE

1

ARIANA JACKET /
Shadow / sizes 28 - 44
RAMONA DRESS /
Shadow / sizes 26 - 48

OPPOSITE PAGE

2

SUSAN SKIRT /
Shadow / sizes 28 - 54

3

MBALI SKIRT /
Shadow / sizes 28 - 54

4

JACOB WAISTCOAT /
Shadow / sizes 34 - 54

DEAN SHIRT /
Feathers Cotton Rich
sizes XS - 3XL







SHADOW
SUITING
(Magnified)

1

2


ALWAYS OFFICE READY


Trusted by over
21 500 companies for
over 42 years.

WANT TO ORDER?

Go to page 19

 **WHATSAPP 066 476 0105**

 **CALL US 0861366011**

 **EMAIL sales@imagemakers.co.za**

OPPOSITE PAGE

1

SHAKIRA WAISTCOAT /
Shadow / sizes 26 - 54

2

JACOB WAISTCOAT /
Shadow / sizes 34 - 54

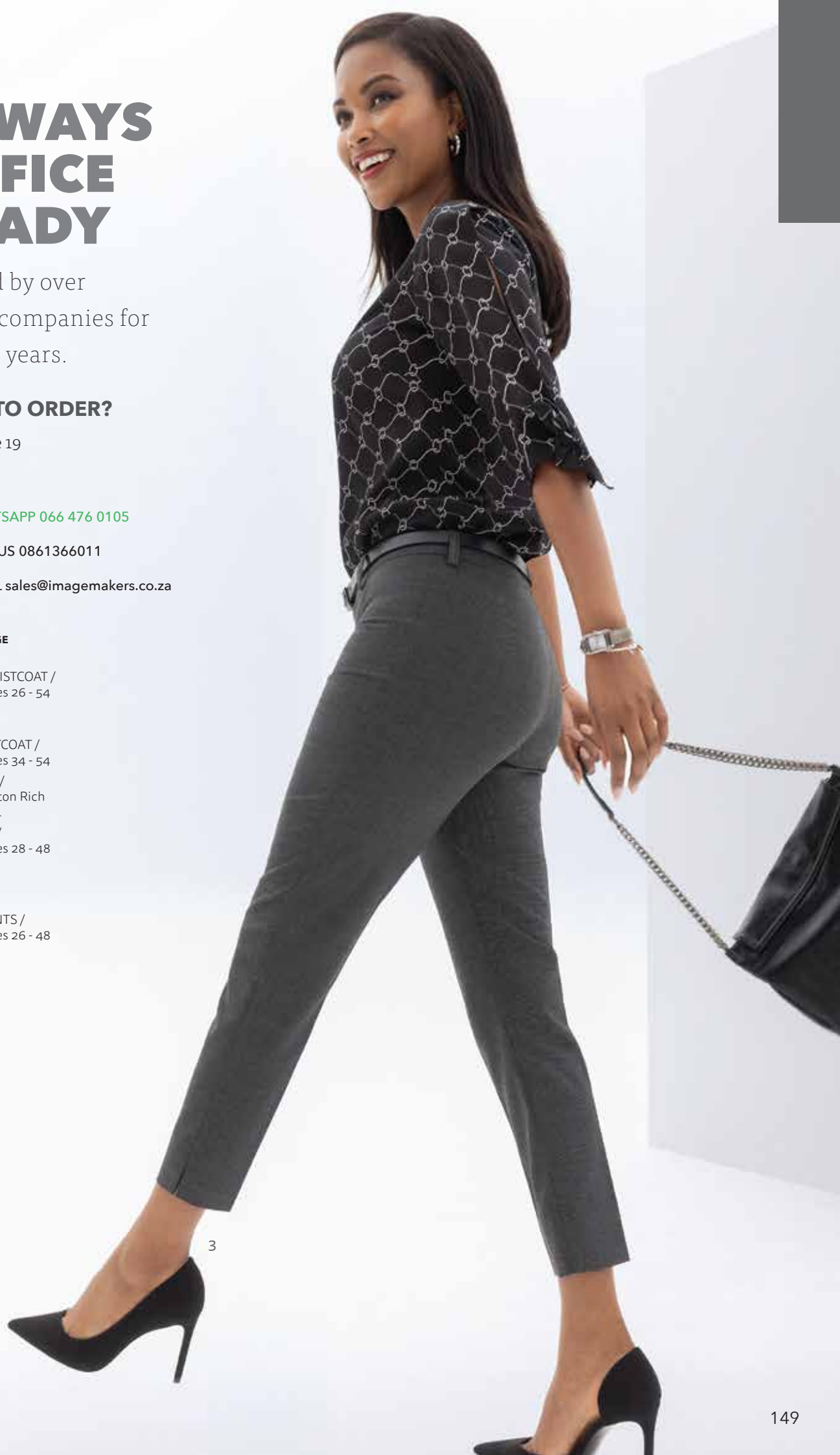
DEAN SHIRT /
Feathers Cotton Rich
sizes XS - 3XL

JAKE PANTS /
Shadow / sizes 28 - 48

THIS PAGE

3

CAPRICE PANTS /
Shadow / sizes 26 - 48



BLACK & WHITE SILKY STRETCH KNITS



SILKY STRETCH KNIT
/ Graphic / White / Black



In addition to our Pearl Polyester styles, we offer a Silky Stretch Knit range. Exceptionally comfortable to wear, drapes beautifully and flatters all body shapes and sizes.

Our complete range of Silky Stretch Knit colours and prints are on page 204



LYDIA T-SHIRT /
White Silky Knit
sizes XS - 3XL
HELGA PANTS/
Black Magic
sizes 28 - 54



JASMIN DRESS /
Graphic Silky Knit
sizes XS - 2XL

HELGA PANTS/
Black Magic
sizes 28 - 54

OUR BRIGHTS



These are our suggested team colour options. You can choose your own.



MENS + LADIES
COTTON RICH SHIRTS
/ Libra / Plain White



MENS + LADIES
COTTON RICH SHIRTS
/ Plain White / Ink Navy



LADIES
PEARL POLYESTER STYLES
/ Eden / Calypso



LADIES
PEARL POLYESTER STYLES
/ Cambridge / Barbie

To see our entire selection of Pearl Polyester colours go to page 232

All Cotton Rich options are on page 236

1
BECKY BLOUSE /
Calypso Pearl
Polyester
sizes 26 - 48

2
CHANEL BLOUSE /
Pearl White
Pearl Polyester
sizes 28 - 48
SUSAN SKIRT /
Black Magic
sizes 28 - 54



BRIGHT



BUSINESS

**COLOURFUL,
CONFIDENT AND
PROFESSIONAL**

OPPOSITE PAGE

1
BECKY BLOUSE /
Eden Pearl Polyester
sizes 26 - 48
MALEBO PANTS /
Black Magic
sizes 28 - 54

2
JIM BLAZER /
Black Magic
sizes 34 - 48
DEAN SHIRT /
Libra Cotton Rich
sizes XS - 3XL
JAKE PANTS /
Black Magic
sizes 28 - 48

3
BETH JACKET /
Black Magic
sizes 28 - 54

THIS PAGE

4
CHANEL BLOUSE /
Pearl White
Pearl Polyester
sizes 28 - 48
SUSAN SKIRT /
Black Magic
sizes 28 - 54

5
BECKY BLOUSE /
Calypso Pearl Polyester
sizes 26 - 48



4

5



THIS PAGE

1

BECKY BLOUSE /
Calypso Pearl Polyester
sizes 26 - 48

2

CHANEL BLOUSE /
Pearl White
Pearl Polyester
sizes 28 - 48

SUSAN SKIRT /
Black Magic
sizes 28 - 54

OPPOSITE PAGE

3

BECKY BLOUSE /
Eden Pearl Polyester
sizes 26 - 48

MALEBO PANTS /
Black Magic
sizes 28 - 54

4

JIM BLAZER /
Black Magic
sizes 34 - 48

DEAN SHIRT /
Libra Cotton Rich
sizes XS - 3XL

JAKE PANTS /
Black Magic
sizes 28 - 48

5

BETH JACKET /
Black Magic
sizes 28 - 54





THIS PAGE

1

SHAKIRA WAISTCOAT /
Black Magic
sizes 26 - 54

KOURTNEY BLOUSE /
Eden Pearl Polyester
sizes 26 - 54

2

RAVEN DRESS /
Black Magic
sizes 28 - 48

OPPOSITE PAGE

3

KENDALL WAISTCOAT /
Black Magic
sizes 28 - 54

VICTORIA SHIRT /
Libra Cotton Rich
sizes 28 - 54

WE DESIGN AND MANUFACTURE

Made in our factory by
South Africans for South
Africa and abroad.



NO IRON REQUIRED

All garments are easy
care. Just wash and wear
and go, go, go!



5 GARMENTS = 8 OUTFITS

Use these garments as a guide to set up your own working wardrobe.



1



2



3



4

MORE BANG FOR YOUR BUCK!

Invest in key
mix & match
pieces.



5



6



7



8

WORKING IN



1
ROSE BLOUSE /
Barbie Pearl Polyester / sizes 28 - 54
HELGA PANTS /
Pacific Navy / sizes 28 - 54



2
CIARA DRESS /
Cambridge Pearl Polyester
sizes 26 - 48



3
KAYLA BLOUSE /
Pearl White Pearl Polyester
sizes 28 - 48
SUSAN SKIRT /
Pacific Navy / sizes 28 - 54

COLOUR

ENERGIZE YOUR OFFICE LOOK WITH A POP OF COLOUR!



4

BECKY BLOUSE /
Barbie Pearl Polyester / sizes 26 - 48

5

CHARLI JACKET /
Pacific Navy
sizes 28 - 54
ROSE BLOUSE /
Cambridge Pearl Polyester
sizes 28 - 54
SUSAN SKIRT /
Pacific Navy
sizes 28 - 54

6

KHOSI TOP /
Pacific Navy
sizes 28 - 54
CHRISTINE PANTS /
Pacific Navy
sizes 28 - 48

CORPORATE FASHION FOR EVERY BUSINESS

Workwear reimagined, professional looks with a fashion-forward edge.

THIS PAGE

1

KHOSI TOP /
Pacific Navy
sizes 28 - 54

CHRISTINE PANTS /
Pacific Navy
sizes 28 - 48

2

STUART SHIRT /
Ink Navy Cotton Rich
sizes XS - 4XL

JAKE PANTS /
Pacific Navy
sizes 28 - 48

OPPOSITE PAGE

3

BECKY BLOUSE /
Barbie Pearl Polyester
sizes 26 - 48

4

ROSE BLOUSE /
Cambridge Pearl Polyester
sizes 28 - 54

SUSAN SKIRT /
Pacific Navy
sizes 28 - 54





WE OFFER CONTINUITY

So you are always able to repeat an order for a new staff member with confidence.



WHATSAPP 066 476 0105



CALL US 0861366011



EMAIL sales@imagemakers.co.za

THIS PAGE

1

ASTRID BLOUSE /
Barbie Pearl Polyester
sizes 26 - 48

HANNA PANTS /
Pacific Navy
sizes 28 - 48

OPPOSITE PAGE

2

ROSE BLOUSE /
Barbie Pearl Polyester
sizes 28 - 54

MALEBO PANTS /
Pacific Navy
sizes 28 - 54

3

CIARA DRESS /
Cambridge Pearl Polyester
sizes 26 - 48



LADIES SUITING WAISTCOATS

SHAKIRA WAISTCOAT

FITTED

Waistcoat, Tie Buckle,
Mock Pockets, LINED

LENGTH

Approx. 52cm centre back

SIZES

26 - 54

Model wears size 32



Approx. 52cm centre back

All our Suiting styles
are available
in colours shown
on pages 230

RUBY RED

SANDSTONE

PLATINUM

GREY PINSTRIPE

SHADOW

GUNMETAL GREY

KENDALL WAISTCOAT

REGULAR FIT

Fashionable Gilet, Inseam
Pockets, Back Buckle Detail,
Side Slits, LINED

LENGTH

Approx. 78cm centre back

SIZES

28 - 54



Model wears
size 32

Model wears
size 42



LADIES SUITING JACKETS

ARIANA
JACKET

REGULAR FIT

Long Sleeve Double
Breasted Peak Lapel,
Flap Pockets, LINED

LENGTH

Approx. 69cm centre back

SIZES

28 - 44

*Optional +5cm sleeve length

Model wears size 32



RUBY RED

SANDSTONE

PLATINUM

GREY PINSTRIPE

SHADOW

GUNMETAL GREY

BETH JACKET

FITTED

Short Sleeve, Peak Lapel,
2 Button, Flap Pockets,
LINED

LENGTH

Approx. 70cm centre back

SIZES

28 - 54

Model wears
size 32

Model wears
size 42



LADIES SUITING JACKETS

PAMELA
JACKET

FITTED

Long Sleeve Fitted Jacket,
Wide notch lapel, Flap
Pockets, Hip Length, LINED

LENGTH

Approx. 66cm centre back

SIZES

26 - 48

*Optional +5cm sleeve length

Model wears size 32



MACHINE
WASHABLE

All garments are machine
washable, including our
blazers and jackets.

RUBY RED

SANDSTONE

PLATINUM

GREY PINSTRIPE

SHADOW

GUNMETAL GREY

CHARLI JACKET

REGULAR FIT

Long Sleeve Jacket,
Wide notch lapel, Regular Fit,
2 Button, LINED

LENGTH

Approx. 69cm centre back

SIZES

28 - 54

*Optional +5cm sleeve length

Model wears
size 42

Model wears
size 32



LADIES SUITING TOP

KHOSI TOP

REGULAR FIT

Short Cap Sleeve,
Panelled Back Zip, UNLINED

LENGTH

Approx. 63cm centre back

SIZES

28 - 54

Model wears
size 32

Model wears
size 42



RUBY RED

SANDSTONE

PLATINUM

GREY PINSTRIPE

SHADOW

GUNMETAL GREY

LADIES SUITING PANTS



Model wears size 32

HANNA PANTS

REGULAR FIT

High Waist Wide Leg, Pockets

LENGTH

Approx. 82cm inside leg

SIZES

28 - 48

*Optional +7cm length

BLACK MAGIC

ANCHOR

NAVY PINSTRIPE

SUEDE BLUE

NAVY PIN DOT

PACIFIC NAVY

LADIES SUITING PANTS



Model wears size 32

CAPRICE PANTS

FITTED

Mid Rise, Skinny Cropped Pants with Side Slit

LENGTH

Approx. 68cm inside leg

SIZES

26 - 48

RUBY RED

SANDSTONE

PLATINUM

GREY PINSTRIPE

SHADOW

GUNMETAL GREY



Model wears size 32

CHRISTINE PANTS

REGULAR FIT

Mid Rise, Classic Straight Leg Pants, Improved fit

LENGTH

Approx. 79cm inside leg

SIZES

28 - 48

*Optional +7cm length



MACHINE WASHABLE

All garments are machine washable, including our blazers and jackets.

BLACK MAGIC

ANCHOR

NAVY PINSTRIPE

SUEDE BLUE

NAVY PIN DOT

PACIFIC NAVY

LADIES SUITING PANTS

HELGA
PANTS

RELAXED FIT

High Rise, Partly Elasticated,
Adjustable Waist, Pockets

LENGTH
Approx. 79cm inside leg

SIZES
28 - 54

*Optional +7cm length



Model wears
size 44

Model wears
size 32



MALEBO PANTS

RELAXED FIT

High Waist, Curvy Fit,
Part Elastic Straight Leg, Pockets

LENGTH

Approx. 79cm inside leg

SIZES

28 - 54

*Optional +7cm length



Model wears
size 44

BLACK MAGIC

ANCHOR

NAVY PINSTRIPE

SUEDE BLUE

NAVY PIN DOT

PACIFIC NAVY

LADIES SUITING DRESSES

LOUISE
DRESS

REGULAR FIT

Short Sleeve, A-Line Dress,
UNLINED

LENGTH

Approx. 98cm centre back

SIZES

28 - 54

*Optional +10cm length



Model wears
size 32

Model wears
size 42



Approx. 98cm centre back

RUBY RED

SANDSTONE

PLATINUM

GREY PINSTRIPE

SHADOW

GUNMETAL GREY



Model wears
size 32

RAMONA DRESS

FITTED

Sleeveless Split Neck Shift Dress,
UNLINED

LENGTH

Approx. 98cm centre back

SIZES

26 - 48

*Optional +10cm length



Model wears
size 32

RAVEN DRESS

REGULAR FIT

Sleeveless Double Breast, Peak Lapel,
Blazer Dress, Belted, Pockets, LINED

LENGTH

Approx. 102cm centre back

SIZES

28 - 48

BLACK MAGIC

ANCHOR

NAVY PINSTRIPE

SUEDE BLUE

NAVY PIN DOT

PACIFIC NAVY

LADIES SUITING SKIRTS

MBALI
SKIRT

RELAXED FIT

Adjustable Waist 60cm Skirt
with Optional 10cm
Extra Length, UNLINED

LENGTH

Approx. 60cm centre back

SIZES

28 - 54

*Optional +10cm length



Model wears
size 42

Model wears
size 32



Approx. 60cm centre back

RUBY RED

SANDSTONE

PLATINUM

GREY PINSTRIPE

SHADOW

GUNMETAL GREY

SUSAN
SKIRT

FITTED

60cm Pencil Skirt,
Mock Welt Pocket,
UNLINED

LENGTH

Approx. 60cm centre back

SIZES

28 - 54



Model
wears
size 32

Model wears
size 42



ALL
**PEARL
POLYESTER
BLOUSES**
AT A
GLANCE



NAOMI



ASTRID



ANYA



ROSE



KIM



KOURTNEY



CHANEL



MICHELLE



BECKY



KAYLA



SABRINA

PEARL POLYESTER BLOUSES

NAOMI BLOUSE

REGULAR FIT

Sleeveless V Neck,
Double Layer Split Front

LENGTH

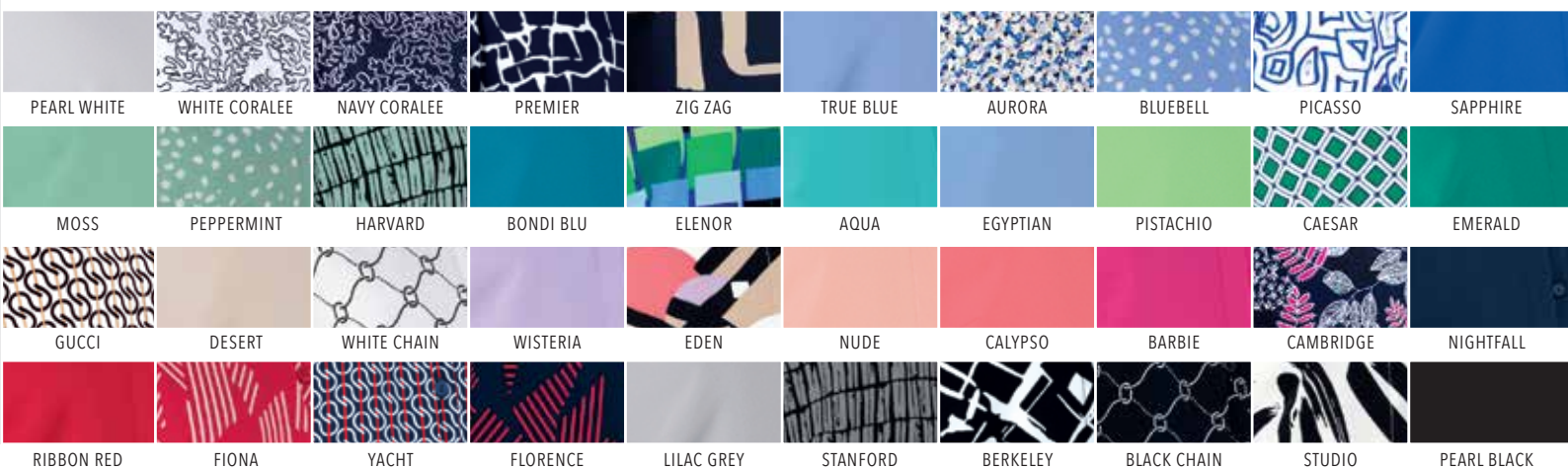
Approx. 64cm centre back

SIZES

28 - 54

Model wears size 32

Approx. 64cm centre back



PEARL POLYESTER BLOUSES

ANYA
BLOUSE

RELAXED FIT

V-Neck, Double Layer Blouse

LENGTH
Approx. 64cm centre back

SIZES
26 - 54

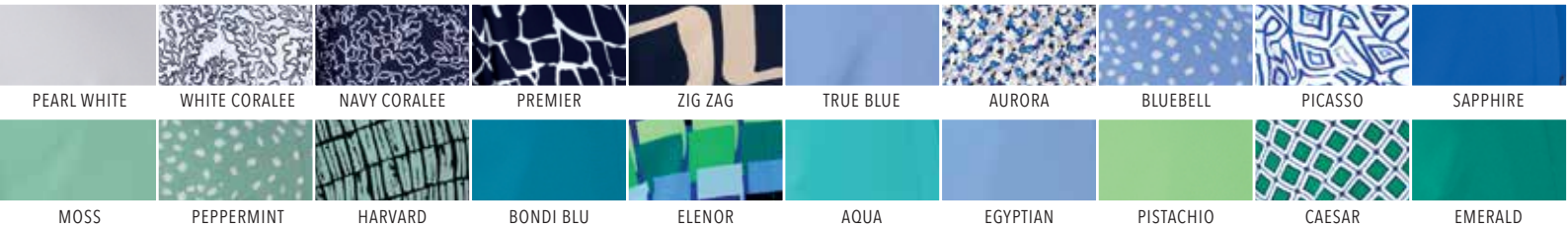
*Optional +10cm extra body length

Model wears size 32



NO IRON
REQUIRED

All garments are easy
care. Just wash and wear
and go, go, go!



ROSE BLOUSE

RELAXED FIT

Short Sleeve, Front and
Shoulder Pleats,
Collared Top

LENGTH

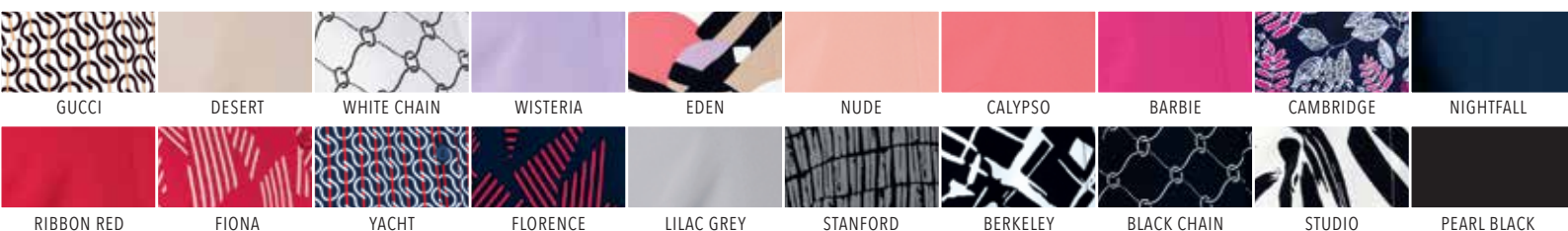
Approx. 70cm centre back

SIZES

28 - 54

Model wears
size 32

Model wears
size 42



PEARL POLYESTER BLOUSES

ASTRID
BLOUSE

FITTED

Removable Tie, Mandarin Collar,
Flutter Sleeve Detailed Top

LENGTH
Approx. 64cm centre back

SIZES
26 - 48

Model wears size 32



MICHELLE BLOUSE

FITTED

3/4 Sleeve Tab, Mandarin Collar,
2 Button Top

LENGTH

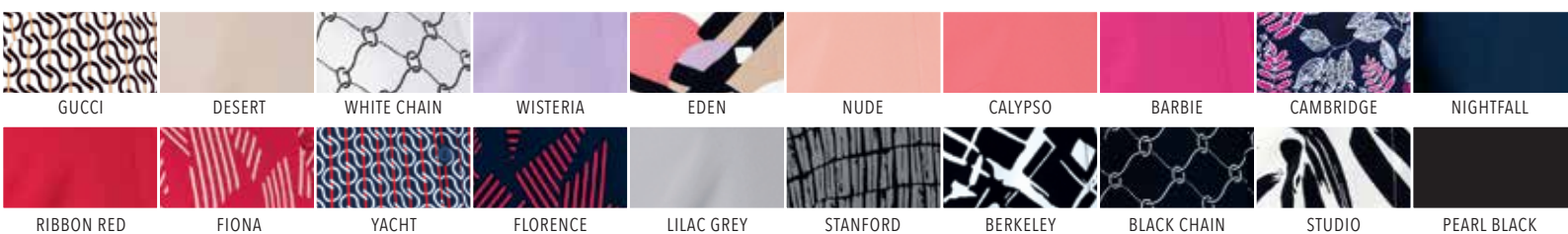
Approx. 67cm centre back

SIZES

28 - 54

Model wears size 32

Approx. 67cm centre back



PEARL POLYESTER BLOUSES

KIM
BLOUSE

FITTED

Short Sleeve Tuck Detail,
Button Down Blouse

LENGTH

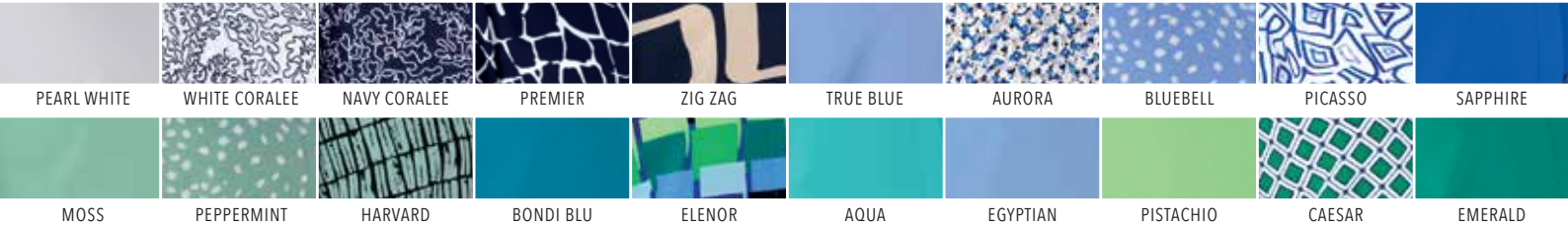
Approx. 65cm centre back

SIZES

26 - 54

Model wears
size 42

Model wears
size 32



KOURTNEY BLOUSE

FITTED

Long Sleeve Tuck Detail,
Button Down Blouse

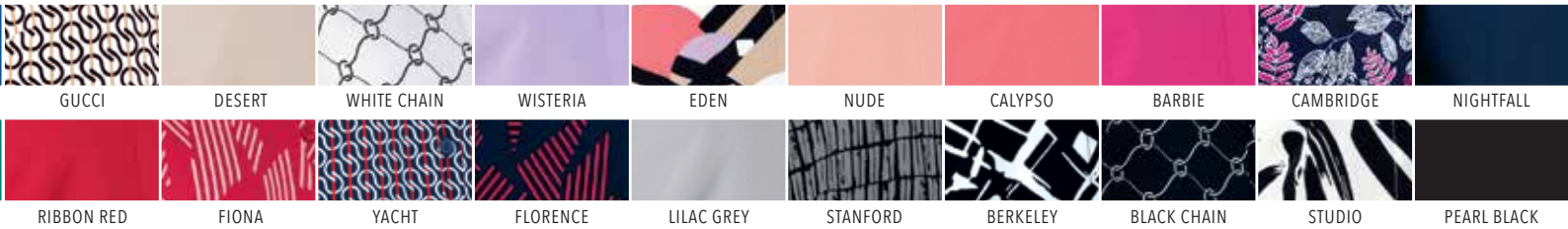
LENGTH
Approx. 65cm centre back

SIZES
26 - 54

**Optional +5cm sleeve length*

Model wears
size 32

Model wears
size 42



PEARL POLYESTER BLOUSES

KAYLA
BLOUSE

RELAXED FIT

Long Sleeve, Shawl Neckline,
Pleat Detailed Top

LENGTH

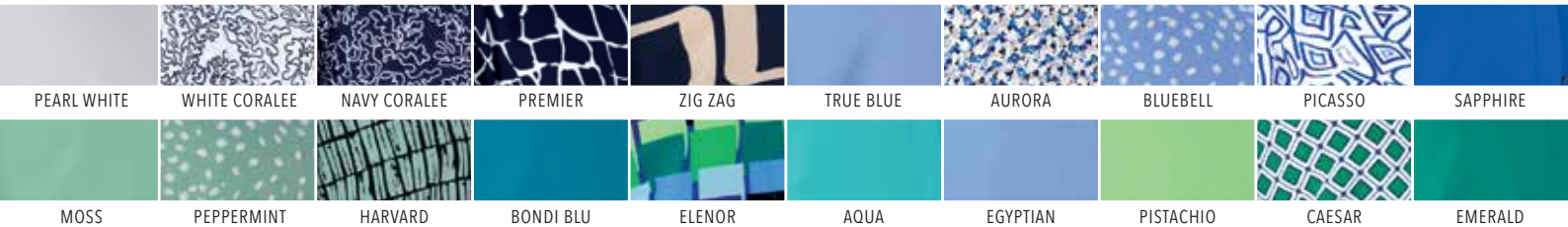
Approx. 70cm centre back

SIZES

28 - 48

*Optional +5cm sleeve length

Model wears size 32



CHANEL BLOUSE

REGULAR FIT

Long Sleeve Blouse
with Tie Detail

LENGTH

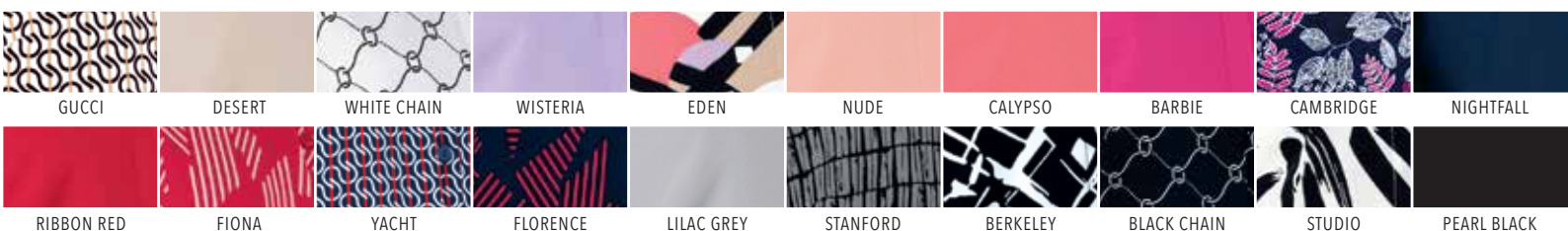
Approx. 67cm centre back

SIZES

28 - 48

Model wears size 32

Approx. 67cm centre back



PEARL POLYESTER BLOUSES

BECKY BLOUSE

REGULAR FIT

Long Sleeve, Boxy Blouse
with Curved Hem
and Wide Cuff

LENGTH

Approx. 62cm centre back

SIZES

26 - 48

Model wears size 32

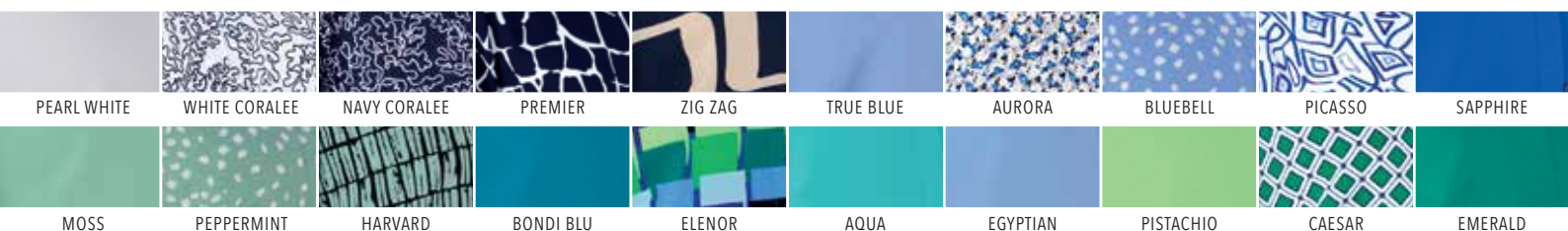


Approx. 62cm centre back



NO IRON REQUIRED

All garments are easy
care. Just wash and wear
and go, go, go!



SABRINA BLOUSE

RELAXED FIT

Long Sleeve Blouse, Front Pockets
& Zip, Roll Up Tab Sleeves,
Back Pleat - Loose Fit

LENGTH

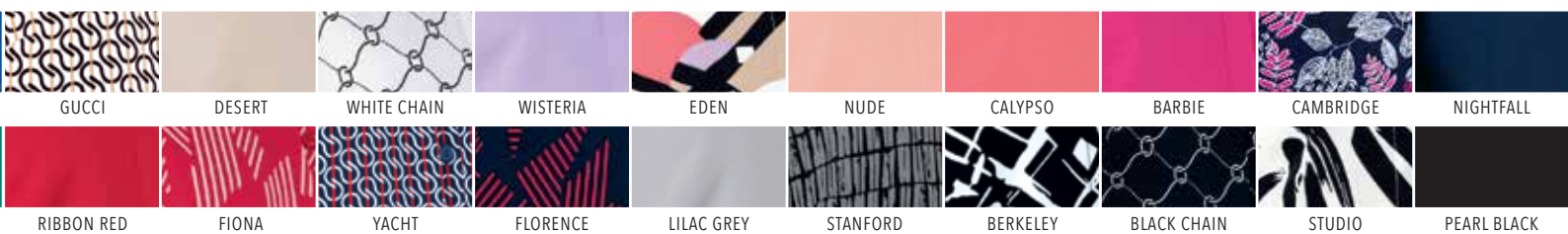
Approx. 71cm centre back

SIZES

26 - 54

Model wears
size 42

Model wears
size 32





PEARL POLYESTER
DRESSES ARE ONLY
AVAILABLE IN
COLOURS & PRINTS
SHOWN RIGHT

GUCCI



NIGHTFALL



STANFORD



CALYPSO



ZIGZAG



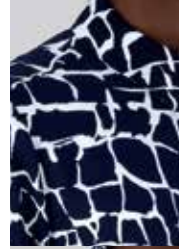
BERKELEY



EDEN



PREMIER



PEARL BLACK



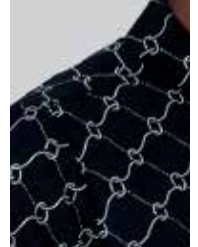
BARBIE



NAVY CORALEE



BLACK CHAIN



CAMBRIDGE



SAPPHIRE



HARVARD



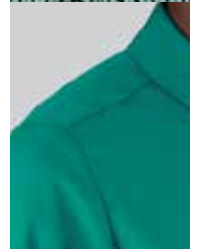
RIBBON RED



PICASSO



EMERALD



FIONA



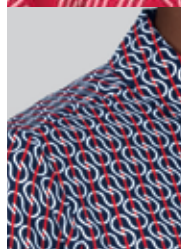
AURORA



CAESAR



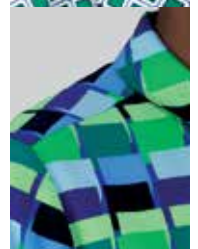
YACHT



BLUEBELL



ELENOR



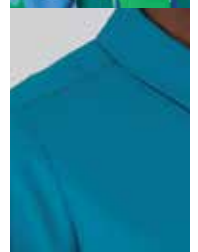
FLORENCE



PEPPERMINT



BONDI BLU



**CIARA
DRESS**

REGULAR FIT

Short Sleeve Soft
Shift Dress, UNLINED

LENGTH

Approx. 96cm centre back

SIZES

26 - 48

**Optional +7cm extra body length*

Model wears size 32



WHATSAPP 066 476 0105



CALL US 0861366011



EMAIL sales@imagemakers.co.za

PEARL POLYESTER DRESSES

ELMARIE
DRESS

RELAXED FIT

Long Tab Sleeve,
Button through Shirt
Soft Dress, Pockets, Belted,
Side Slits, UNLINED

LENGTH

Approx. 96cm centre back

SIZES

28 - 54

*Optional +7cm extra body length

Model wears
size 32

Model wears
size 42



RIHANNA DRESS

RELAXED FIT

Short Sleeve, Front and Shoulder Pleats, Collared Dress, UNLINED

LENGTH

Approx. 100cm centre back

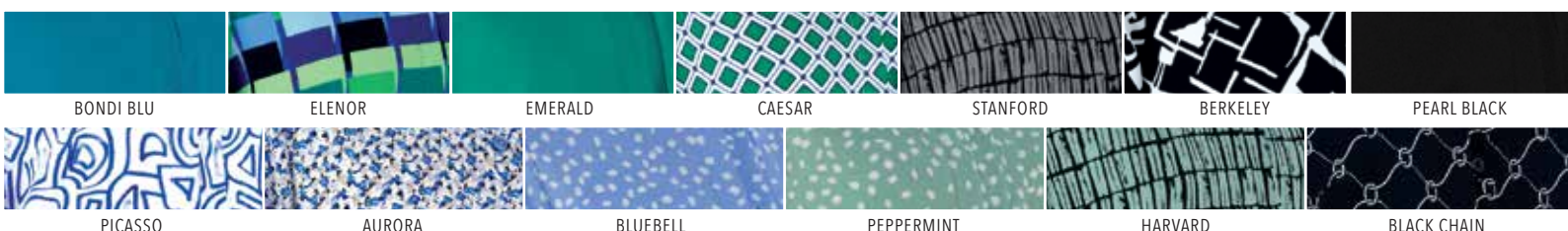
SIZES

28 - 54

*Optional +7cm extra body length

Model wears
size 32

Model wears
size 42





COTTON RICH
SHIRTS ARE ONLY
AVAILABLE IN
COLOURS & PRINTS
SHOWN RIGHT

PLAIN BLACK



PLAIN WHITE



FEATHERS



KINGSTON



MONACO



SAGE



AMAZON



MEADOW



GEMINI



GREY GINGHAM



GREYSTONE



RIO



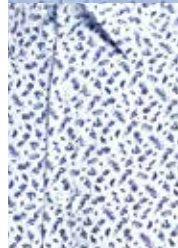
LIBRA



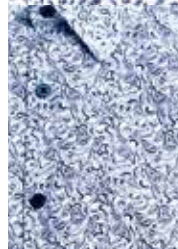
INDIGO



AZURE



CHELSEA



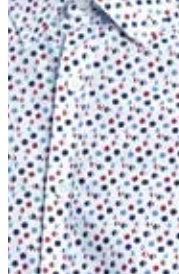
HAMILTON



ARIES



OLYMPIC



WESTON



BOTANICAL



BLUE NAVY DOT



INK NAVY



COASTAL CHECK



COBALT



TOPAZ



VICTORIA SHIRT

REGULAR FIT

Long Sleeve, Concealed Button,
Wide Cuff Shirt

LENGTH

Approx. 65cm centre back

SIZES

28 - 54

Model wears size 32



LADIES COTTON RICH SHIRTS

LEXI SHIRT

REGULAR FIT

Short Sleeve Classic
Curved Panel Line Shirt

LENGTH

Approx. 65cm centre back

SIZES

26 - 54

Model wears
size 32

Model wears
size 42



LIANDRI SHIRT

REGULAR FIT

Long Sleeve Classic Curved Panel Line Shirt

LENGTH

Approx. 65cm centre back

SIZES

26 - 54

*Optional +5cm sleeve length

Model wears
size 32

Model wears
size 42



SILKY STRETCH KNIT STYLES



NAVY
Silky Stretch Knit

PREMIER
Silky Stretch Knit

ROYAL
Silky Stretch Knit

CEASAR
Silky Stretch Knit

JADE
Silky Stretch Knit

WHITE
Silky Stretch Knit

ASIAN
Silky Stretch Knit

RED
Silky Stretch Knit

GRAPHIC
Silky Stretch Knit

BLACK
Silky Stretch Knit



JASMIN
DRESS

FITTED

Short Sleeve, Wrap Dress

LENGTH

Approx. 105cm centre back

SIZES

XS - 2XL

Model wears size S

|.....|
Approx. 105cm centre back
|.....|



VALENTINA COATIGAN

RELAXED FIT

Long Sleeve Knit Coatigan

LENGTH

Approx. 85cm centre back

SIZES

XS - 3XL

Model wears size S

PHELISA PANTS

RELAXED FIT

Half Elastic Knit Lounge Pants
with Pockets

LENGTH

Approx. 79cm inside leg

SIZES

XS - 3XL

Model wears size S



SILKY STRETCH KNIT STYLES



NAVY
Silky Stretch Knit

PREMIER
Silky Stretch Knit

ROYAL
Silky Stretch Knit

CAESAR
Silky Stretch Knit

JADE
Silky Stretch Knit

WHITE
Silky Stretch Knit

ASIAN
Silky Stretch Knit

RED
Silky Stretch Knit

GRAPHIC
Silky Stretch Knit

BLACK
Silky Stretch Knit



Approx. 63cm centre back

LYDIA T-SHIRT

FITTED

Short Sleeve Basic Crew Neck T-Shirt

LENGTH

Approx. 63cm centre back

SIZES

XS - 3XL

Model wears size S

LERATO TOP

RELAXED FIT

Short Sleeve Top,
Flared to the Bottom

LENGTH

Approx. 77cm centre back

SIZES

XS - 3XL

Model wears size S



Approx. 77cm centre back

Our Silky Stretch Knit collection is made from a mix of woven knit fabric. It's easy to care for, comfortable to wear, drapes beautifully, and looks great on all body shapes and sizes.



- 1/ PREMIER Silky Stretch Knit
- 2/ ROYAL Silky Stretch Knit
- 3/ CAESAR Silky Stretch Knit
- 4/ JADE Silky Stretch Knit
- 5/ NAVY Silky Stretch Knit



- 6/ ASIAN Silky Stretch Knit
- 7/ WHITE Silky Stretch Knit
- 8/ RED Silky Stretch Knit
- 9/ GRAPHIC Silky Stretch Knit
- 10/ BLACK Silky Stretch Knit



MACHINE WASHABLE

All garments are machine washable, including our blazers and jackets.



Navy Pin Dot

RUBY RED

SANDSTONE

PLATINUM

GREY PINSTRIPE

SHADOW

GUNMETAL GREY

JACOB WAISTCOAT

REGULAR FIT

Regular Waistcoat,
Adjustable Back Buckle,
LINED

LENGTH

Approx. 58cm centre back

SIZES

34 - 54

Model wears size 34



MENS SUITING BLAZERS

DAVID BLAZER

SLIM FIT

Slim Fit Blazer,
One Button, LINED

LENGTH

Approx. 72cm centre back

SIZES

32 - 48

**Optional +5cm sleeve length*

Model wears size 34



RUBY RED

SANDSTONE

PLATINUM

GREY PINSTRIPE

SHADOW

GUNMETAL GREY

JIM
BLAZER

REGULAR FIT
Regular Fit Blazer, LINED

LENGTH
Approx. 73cm centre back

SIZES
34 - 54

*Optional +5cm sleeve length

Model wears size 34

Approx. 73cm centre back



BLACK MAGIC

ANCHOR

NAVY PINSTRIPE

SUEDE BLUE

NAVY PIN DOT

PACIFIC NAVY

MENS SUITING PANTS



DYLAN PANTS

SLIM FIT

Slim Fit Pants, With Flat Front, 4 Pockets

LENGTH

Approx. 84cm inside leg

SIZES

28 - 48

*Optional +5cm length

RUBY RED

SANDSTONE

PLATINUM

GREY PINSTRIPE

SHADOW

GUNMETAL GREY



Model wears size 34

JAKE PANTS

REGULAR FIT

Regular Fit Pants, With Flat Front, 4 Pockets

LENGTH
Approx. 84cm inside leg

SIZES
28 - 48

*Optional +5cm length

All our Suiting styles
are available
in colours and prints
shown on pages 230



MENS COTTON RICH SHIRTS

ETHAN
SHIRT

SLIM FIT

Long Sleeve, Slim Fit Shirt

LENGTH

Approx. 75cm centre back

SIZES

XS - XL

*Optional +5cm sleeve length

Model wears size M



DEAN SHIRT

REGULAR FIT

Long Sleeve, Regular Fit Shirt

LENGTH

Approx. 76cm centre back

SIZES

XS - 3XL

*

Optional +5cm sleeve length

Model wears size L

Approx. 76cm centre back



MENS COTTON RICH SHIRTS

STUART
SHIRT

RELAXED FIT

Long Sleeve, Relaxed Fit Shirt,
Pocket

LENGTH

Approx. 77cm centre back

SIZES

XS - 4XL

*Optional extra +5cm sleeves
& 10cm body length

Model wears size L





DAN SHIRT

REGULAR FIT

Short Sleeve, Regular Fit Shirt

LENGTH

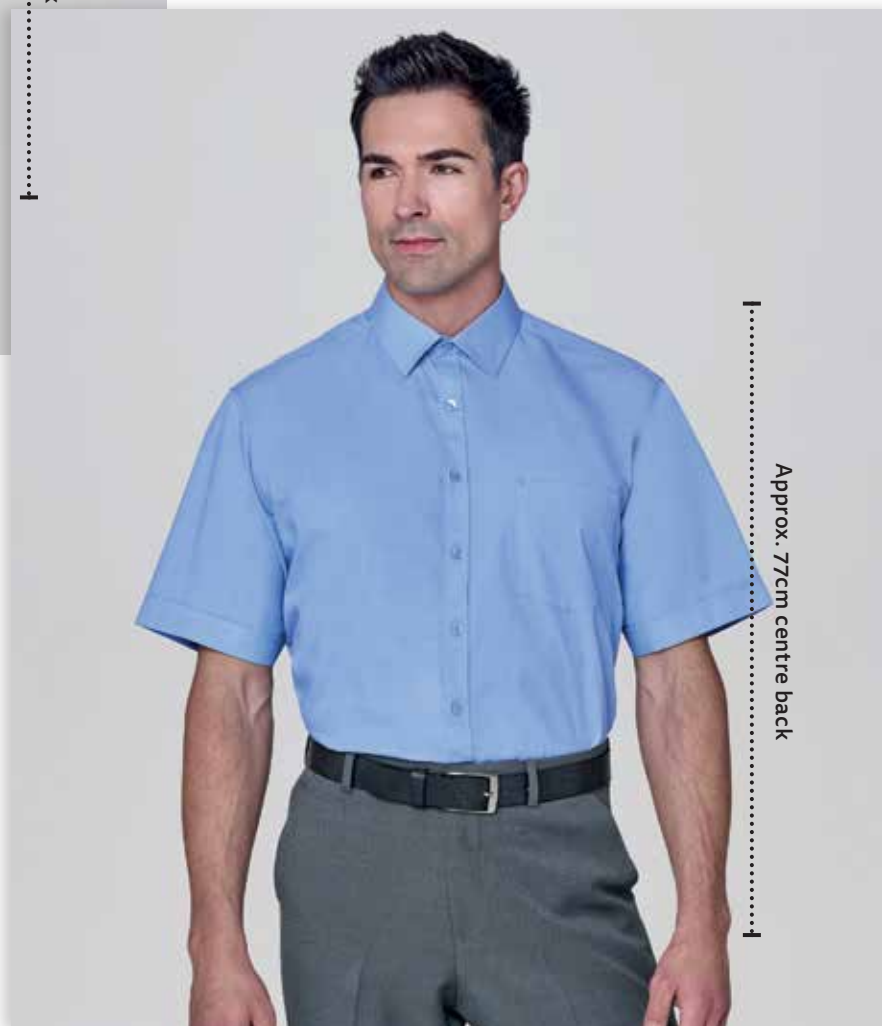
Approx. 76cm centre back

SIZES

XS - 3XL

Model wears size L

Approx. 76cm centre back



SCOTT SHIRT

RELAXED FIT

Short Sleeve, Relaxed Fit Shirt,
Pocket

LENGTH

Approx. 77cm centre back

SIZES

XS - 4XL

**Optional extra +10cm body length*

Model wears size L

Approx. 77cm centre back



WINTER WARMERS

JANINE JERSEY

REGULAR FIT

Long Sleeve Button Down
Knit Cardigan

LENGTH

Approx. 64cm centre back

SIZES

XS - 2XL

Model wears size S

Approx. 64cm centre back

CHARCOAL
Knit Melton

NAVY
Knit Melton

JUSTIN JERSEY

REGULAR FIT

Long Sleeve Knit Pullover

LENGTH

Approx. 73cm centre back

SIZES

XS - 2XL

Model wears size M

Approx. 73cm centre back



Approx. 92cm centre back

LYNN COAT

REGULAR FIT

Classic Melton Coat with Pockets, LINED

LENGTH

Approx. 92cm centre back

SIZES

XS - 2XL

Model wears size S



CHARCOAL
Melton

NAVY
Melton



Approx. 90cm centre back

NOAH COAT

REGULAR FIT

Classic Melton Coat
with Pockets, LINED

LENGTH

Approx. 90cm centre back

SIZES

XS - 2XL

Model wears size M

HEALTHWEAR

- ✓ Lightweight
- ✓ Butter soft finish
- ✓ Quick dry technology
- ✓ Hypoallergenic
- ✓ Breathable
- ✓ Easy-care



WHITE Mini Matt
TURQUOISE Mini Matt
ROYAL Mini Matt
NAVY Mini Matt
BLACK Mini Matt
CHARCOAL Mini Matt
RED Mini Matt



Approx. 75cm centre back

NANDI TOP

REGULAR FIT

Short Sleeve Tunic Top, Front Pockets,
Side Slits, Hidden Pen Pocket

LENGTH

Approx. 75cm centre back

SIZES

28 - 54

Model wears size 32

MALIKA TOP

REGULAR FIT

Short Sleeve Tunic Top, Button Front,
Pockets, Side Slits, Hidden Pen Pocket

LENGTH

Approx. 75cm centre back

SIZES

28 - 54

Model wears size 32



Approx. 75cm centre back

DOREEN TOP

REGULAR FIT

Short Sleeve Top, V-Neck,
Front Pockets, Hidden Pen Pocket

LENGTH

Approx. 72cm centre back

SIZES

28 - 54

Model wears size 32

Approx. 72cm centre back



RED
Mini Matt

CHARCOAL
Mini Matt

BLACK
Mini Matt

NAVY
Mini Matt

ROYAL
Mini Matt

TURQUOISE
Mini Matt

WHITE
Mini Matt



|.....|
Approx. 75cm centre back

WINNIE WAISTCOAT

REGULAR FIT

Sleeveless Gilet, Pockets In Panel,
3 Buttons

LENGTH

Approx. 75cm centre back

SIZES

28 - 54

Model wears size 32



|.....|
Approx. 60cm centre back

MONICA SKIRT

REGULAR FIT

60cm Skirt With Part Elastic Waist,
UNLINED

LENGTH

Approx. 60cm centre back

SIZES

28 - 54

**Optional +10cm extra length*

Model wears size 32

RED
Mini Matt

CHARCOAL
Mini Matt

BLACK
Mini Matt

NAVY
Mini Matt

ROYAL
Mini Matt

TURQUOISE
Mini Matt

WHITE
Mini Matt



Approx. 78cm inside leg

PRECIOUS
PANTS

REGULAR FIT

Half Elasticated Waist, 2 Side Pockets,
Flat Front, Pull On Pants

LENGTH
Approx. 78cm inside leg

SIZES
28 - 54

*Optional +7cm extra length

Model wears size 32

HILARY
PANTS

REGULAR FIT

Part Elasticated Waist, 2 Side Pockets,
Zip Front Pants

LENGTH
Approx. 81cm inside leg

SIZES
28 - 54

*Optional +7cm extra length

Model wears size 32



Approx. 81cm inside leg



Approx. 75cm centre back

THANDO TOP

REGULAR FIT

Short Sleeve Male Scrub Top,
3 Pockets

LENGTH

Approx. 75cm centre back

SIZES

XS - 4XL

Model wears size M

PHILIP PANTS

REGULAR FIT

Mens Pants, Part Elasticated,
Side Pockets, Zip Front

LENGTH

Approx. 84cm inside leg

SIZES

28 - 48

**Optional +5cm extra length*

Model wears size 32



Approx. 84cm inside leg

STYLE FOR EVERY BODY

Everyone is unique, therefore our range comes in various fits and sizes. To make it easier for everyone to find the best styles that flatter their body type, we have classified our styles into the following **'FIT' categories:**

FITTED

These garments are designed to closely follow the contours of the body, providing a more snug and form-fitting silhouette, enhancing the figure.

REGULAR FIT

Regular fit garments are shaped to lightly sit on your body, giving it some form without being too tight. Regular fit is the most traditional & suits a wide range of body types.

RELAXED FIT

Relaxed fit is a looser and more comfortable cut, allowing for more freedom of movement.

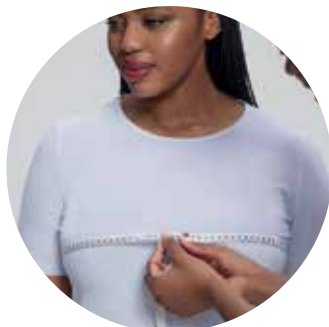


LADIES SIZE GUIDE

GARMENT SIZE	BUST	HIP	KNITWEAR & COATS
26	73 - 76cm	80 - 83cm	XS 28 - 30
28	77 - 80cm	84 - 87cm	S 32 - 34
30	81 - 84cm	88 - 91cm	M 36 - 38
32	85 - 88cm	92 - 95cm	L 40 - 42
34	89 - 93cm	96 - 100cm	XL 44 - 46
36	94 - 98cm	101 - 105cm	2XL 48 - 50
38	99 - 103cm	106 - 110cm	3XL 52 - 54
40	104 - 108cm	111 - 115cm	
42	109 - 114cm	116 - 121cm	
44	115 - 120cm	122 - 127cm	
46	121 - 126cm	128 - 133cm	
48	127 - 132cm	134 - 139cm	
50	133 - 138cm	140 - 145cm	
52	139 - 144cm	146 - 151cm	
54	145 - 150cm	152 - 157cm	



HOW TO MEASURE UP



(A) BUST

Measure around the fullest part of the bust, keeping the tape level and straight. Keep one finger between the tape and the body.



(B) HIPS

Measurement over the fullest part of your bottom / thighs.

Don't guess your size, ask a friend to measure you with a tape measure to help you order the right size. Compare your measurements with the chart above.

* PLEASE NOTE

Compare your measurements with the chart above.
If your size falls between two sizes, we recommend that you choose the larger size.



SUIT YOURSELF

Everyone is unique, therefore our range comes in various fits and sizes. To make it easier for everyone to find the best styles that flatter their body type, we have classified our styles into the following **'FIT' categories**:

SLIM FIT

These garments are designed to closely follow the contours of the body, providing a more sleek and form-fitting silhouette without creating an uncomfortable fit.

REGULAR FIT

Regular fit garments are shaped to lightly sit on your body, giving it some form without being too tight, creating a tailored silhouette.

RELAXED FIT

This is the most traditional fit. It is looser on the body providing a more comfortable cut & look allowing for more freedom of movement.

MENS SIZE GUIDE

MENS SHIRTS, KNITWEAR & COATS			MENS BLAZERS		MENS PANTS	
GARMENT SIZE	NECK	CHEST	GARMENT SIZE	CHEST	GARMENT SIZE	WAIST
XS	36cm	81-87cm	34	87cm	28	72cm
S	38cm	87-94cm	36	92cm	30	77cm
M	40cm	97-104cm	38	97cm	32	82cm
L	42cm	107-114cm	40	102cm	34	87cm
XL	44cm	117-124cm	42	107cm	36	92cm
2XL	46cm	127-134cm	44	112cm	38	97cm
3XL	48cm	137-144cm	46	117cm	40	102cm
4XL	50cm	147-154cm	48	122cm	42	107cm
			50	127cm	44	112cm
			52	132cm	46	117cm
			54	137cm	48	122cm



HOW TO MEASURE UP



A. NECK

Don't guess your size, ask a friend to measure around your neck at collar level.
Make allowance for comfort.



B. CHEST

Measure around the fullest part of the chest, keeping the tape level and straight. Keep one finger between the tape and the body.



C. WAIST

Measurement over waist position, where you would naturally wear your belt.

* PLEASE NOTE

Compare your measurements with the chart above.
If your size falls between two sizes, we recommend that you choose the larger size.

SUITING COLOURS FOR MEN & LADIES

Choose your suiting
foundation colour
to build your team
uniform.



1/ Navy Pin Dot



WHATSAPP 066 476 0105



CALL US 0861366011



EMAIL sales@imagemakers.co.za



MACHINE WASHABLE

All garments are machine washable, including our blazers and jackets.



2/ Sandstone

3/ Platinum

4/ Ruby Red

5/ Suede Blue

6/ Pacific Navy

7/ Gunmetal Grey

8/ Black Magic



9/ Navy Pinstripe

10/ Grey Pinstripe

11/ Anchor

12/ Shadow

PEARL POLYESTER BLOUSE COLOURS & PRINTS FOR LADIES



WHITE CORALEE



NAVY CORALEE



AURORA



BLUEBELL



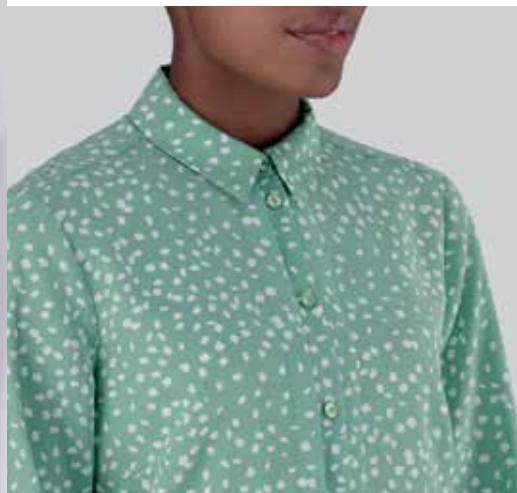
PEARL WHITE



MOSS



BONDI BLU



PEPPERMINT



HARVARD



PREMIER



ZIG ZAG



NIGHTFALL



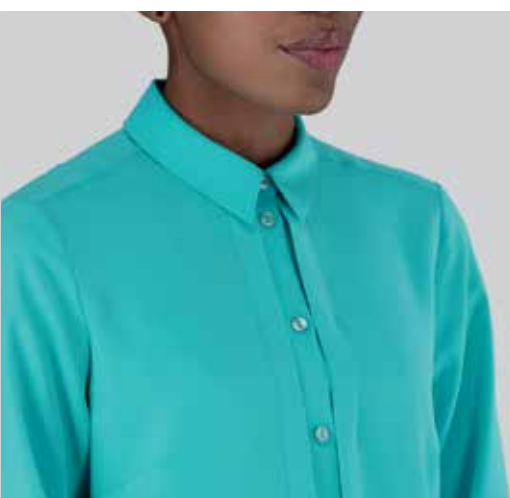
TRUE BLUE



PICASSO



SAPPHIRE



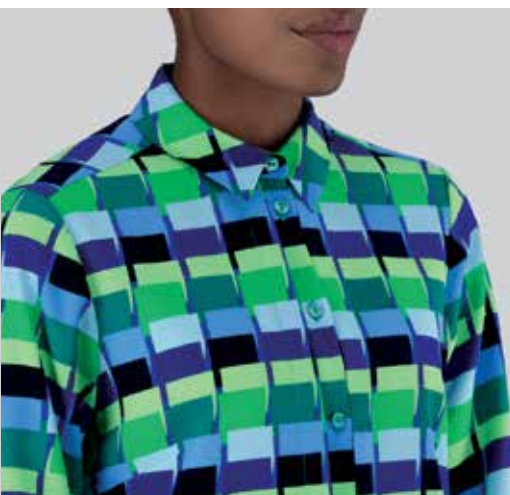
AQUA



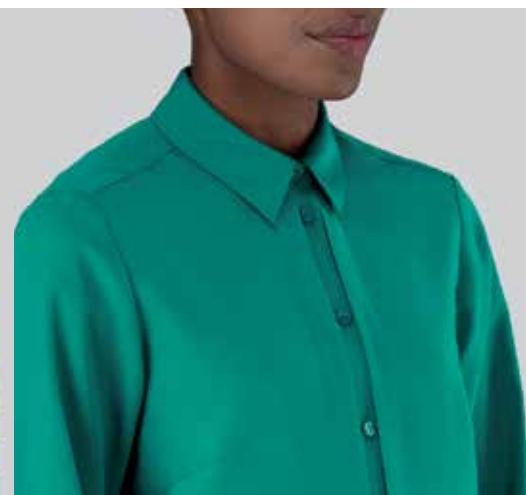
EGYPTIAN



CAESAR



ELENOR



EMERALD



PISTACHIO



GUCCI



DESERT



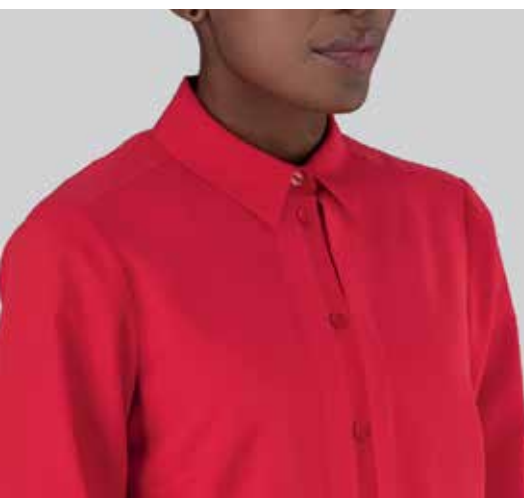
WHITE CHAIN



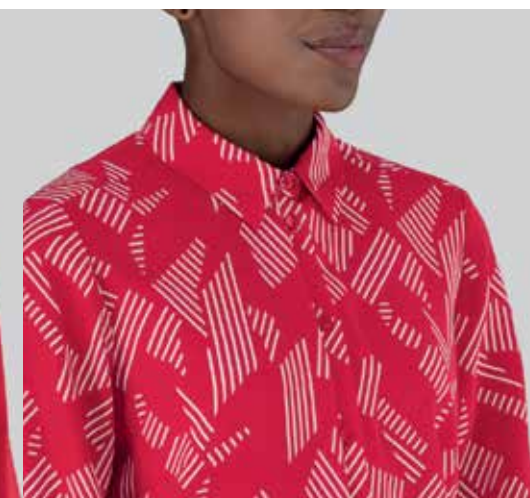
NUDE



CALYPSO



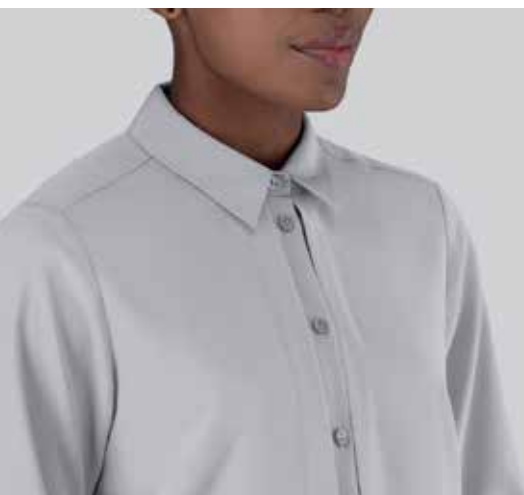
RIBBON RED



FIONA



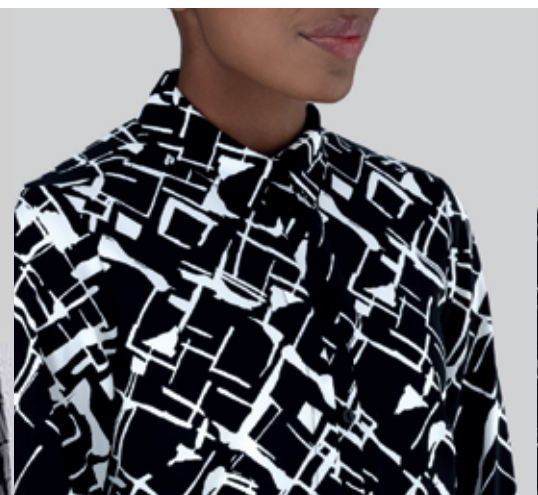
YACHT



LILAC GREY



STANFORD



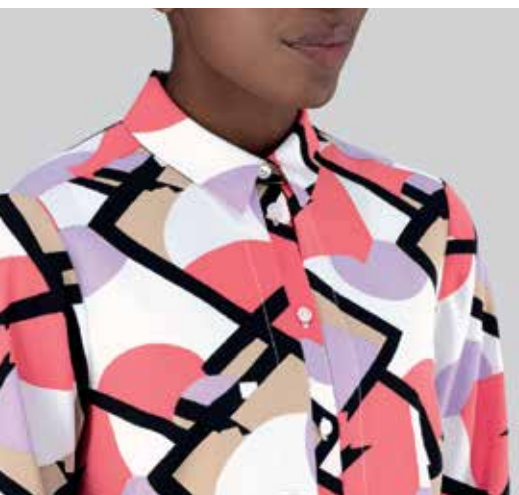
BERKELEY



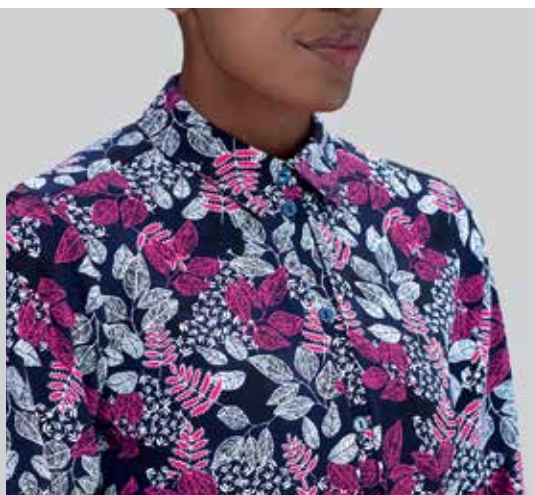
WISTERIA



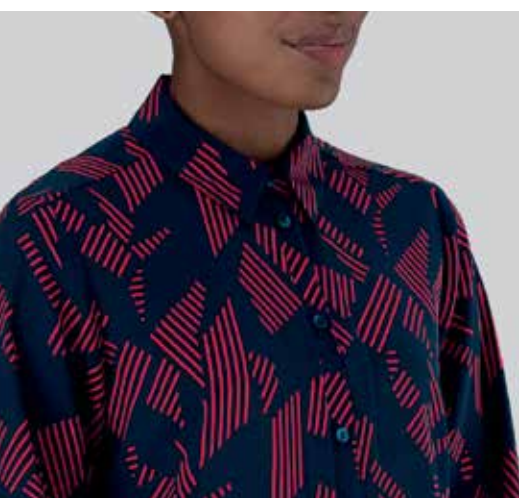
BARBIE



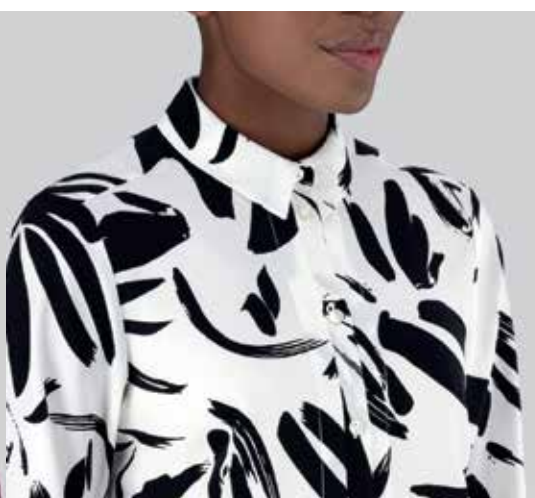
EDEN



CAMBRIDGE



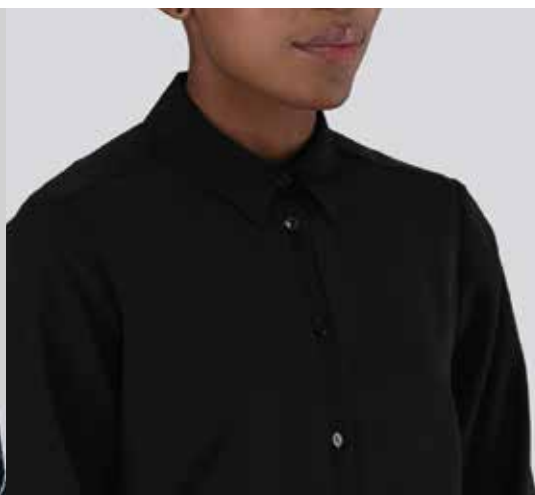
FLORENCE



STUDIO



BLACK CHAIN



PEARL BLACK

Pearl Polyester styles are easy to wash and wear, the colours are fade resistant, keeping your garments looking new for longer. They don't wrinkle much, so you can look neat and stylish without the hassle of ironing.

*Saving you time
& money!*

All our
Pearl Polyester colours
and prints are available
in styles shown
on pages 184 - 195



WHATSAPP 066 476 0105



CALL US 0861366011



EMAIL sales@imagemakers.co.za

COTTON RICH COLOURS & PRINTS FOR MEN & LADIES

All our
Cotton Rich colours
and prints are available
in Ladies styles shown
on pages 201 - 203;
Mens styles shown
on pages 214 - 217



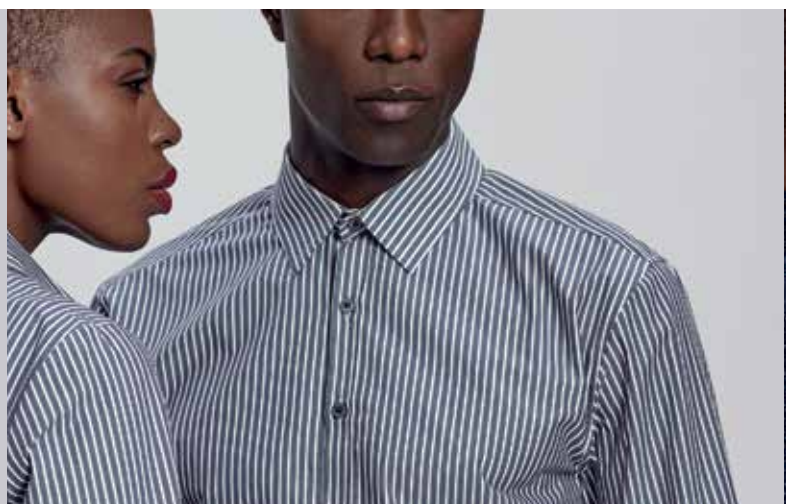
FEATHERS



PLAIN WHITE



BLACK COTTON



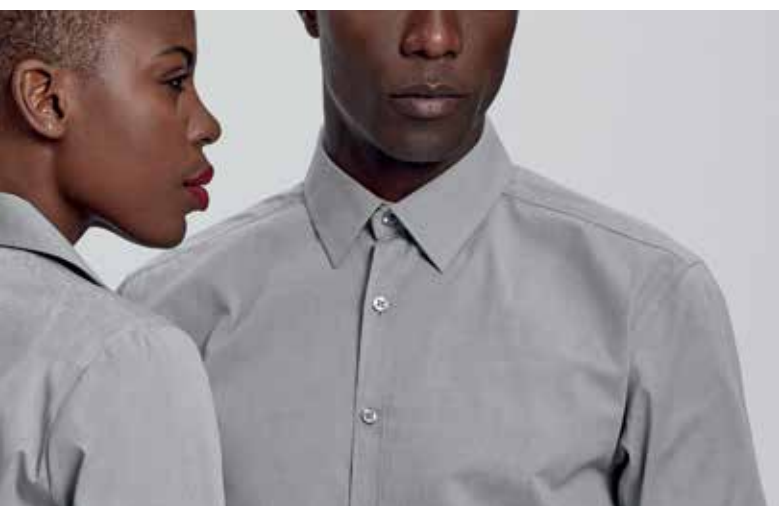
KINGSTON



GREY GINGHAM



LIBRA



GREYSTONE



OLYMPIC



RIO



WESTON



BLUE NAVY DOT



BOTANICAL



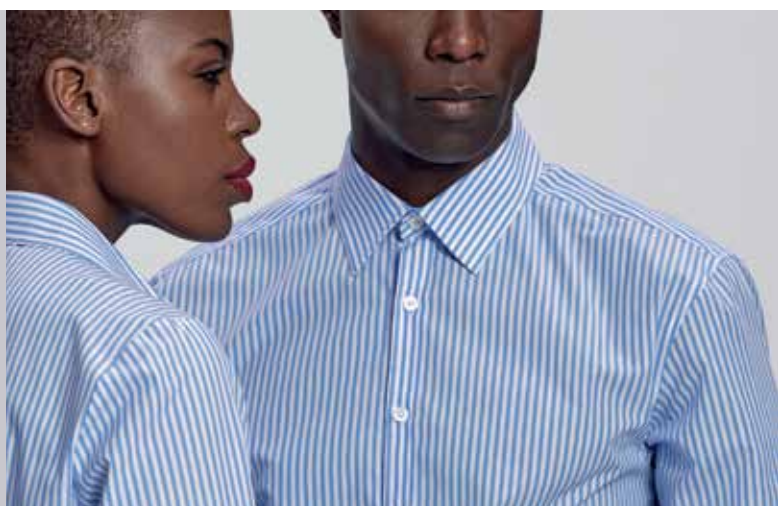
CHELSEA



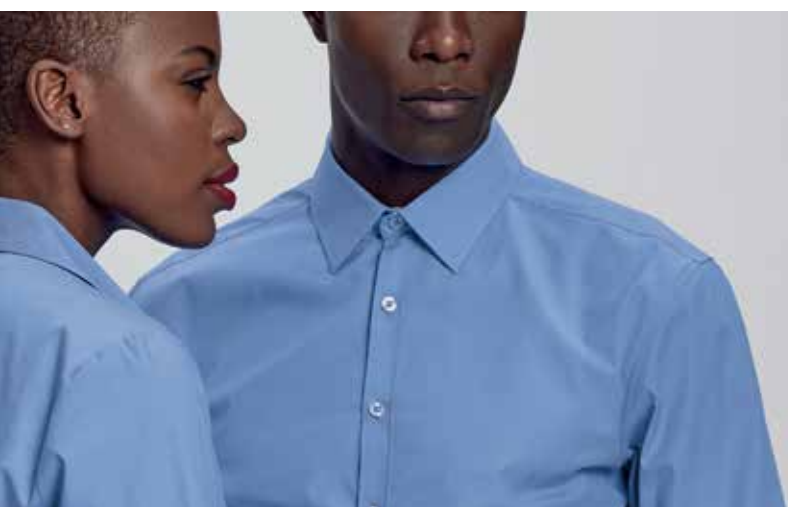
AZURE



INDIGO



HAMILTON



TOPAZ



COBALT



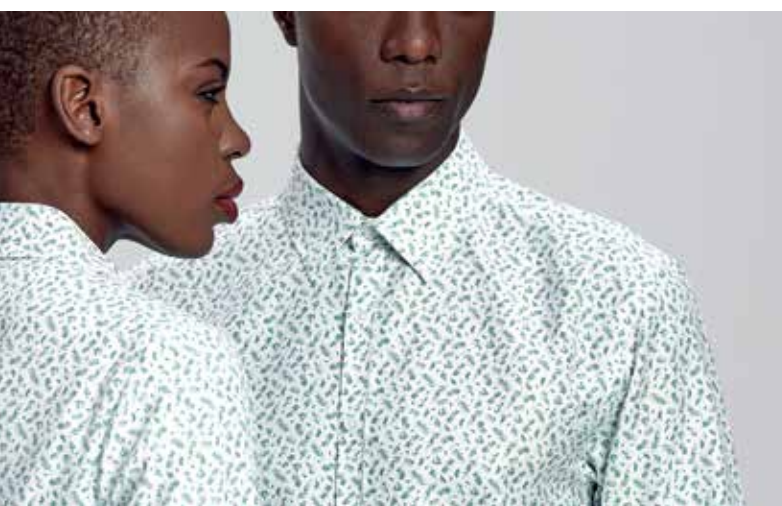
INK NAVY



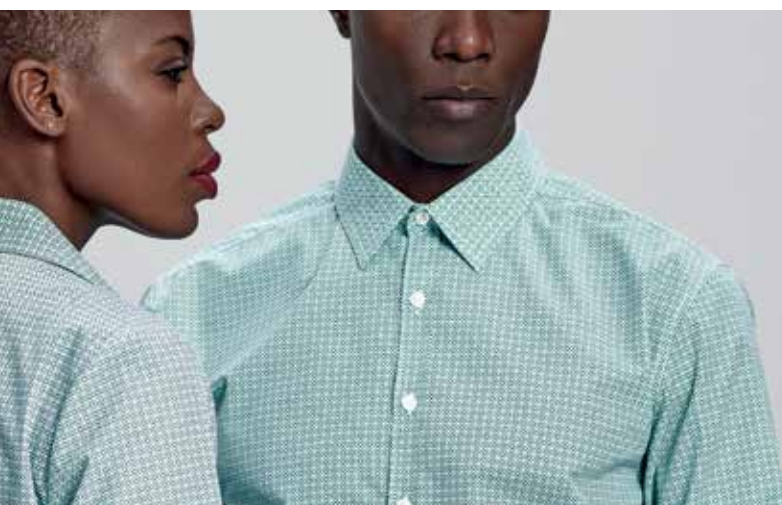
COASTAL CHECK



SAGE



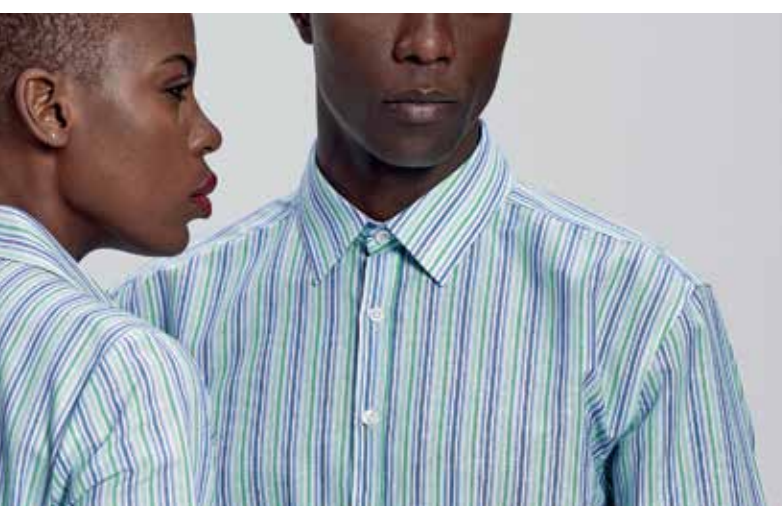
AMAZON



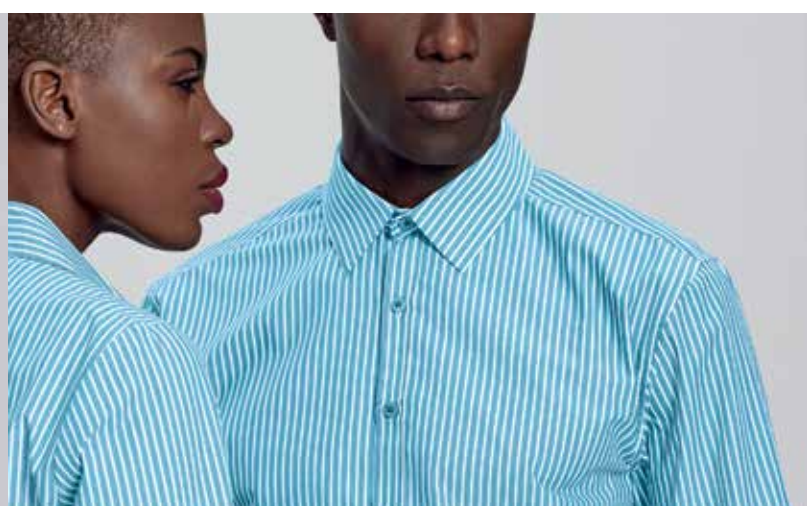
MEADOW



MONACO



GEMINI



ARIES





HOW IT WORKS

Restyling your team is exciting and stress-free with our step-by-step process, guided by a dedicated sales assistant.

- 1) Get inspired with our catalogue
- 2) Choose your colour palette and styles
- 3) Place your team's order
- 4) Garments manufactured to perfection
- 5) Delivered with care



066 476 0105



0861 366011



sales@imagemakers.co.za

