

# AUTUMN - WINTER

## COLLECTION 2022-2023



# MAITE ALONSO

CEO OF ANALCO AUXILIAR CALZADO

Since COVID19 appeared in Spring 2020, we have lived uncertain and difficult times, both personally and at work, forcing us to make decisions based on a fast-changing environment, far from what we were used to.

However, I am indeed convinced that we have learnt from what has happened, worked hard together, maintaining the will and flexibility that defines us, and the sensibility that the situation required. Now, we know ourselves even more and know that together we can aim for big results.

This new coming scenario has new important aspects: *Sustainability, Technology and Digitalisation*.

At Analco, we are conscious of the importance of **sustainability** and have started an Environmental Management System, with policies that are designed not only to protect the environment but to offer a more sustainable workplace. After months of hard work, we have received the **ISO 14001** certification, which confirms Analco is a dedicated business with constantly improving policies in this field.

We keep working towards making our team knowledgeable of the importance of *Reducing, Reusing and Recycling*. Within this initiative, we have increased the number of **Green Products** in our portfolio, which allows us to offer a great variety of options that adapt to your needs.

One of our main objectives for the next year is being able to efficiently manage our resources to offer the best product. To achieve this objective, the implementation of **Technology and Digitalisation** is vital. We are educating ourselves and adding professional people to our staff to successfully implement these important changes.

The new tools we have incorporated allow us to present this virtual catalogue showing what the next **Fall/Winter 22/23** season has to offer. This is the result of the hard work of our product development team at Analco, where we have tried to apply the colour and shape fashion trends to your requirements. Apart from new models, we present you the new colours on models from past seasons. We hope you like them and are useful when elaborating your collection for the next season.

I'd like to use this occasion to inform you about our new installations in *Torrellano Industrial Park (C/Germán Bernacer, 11 Elche)*, as part of our new commercial strategy, where our team will be pleased to help you.

**Maite Alonso**  
CEO





+34 966 66 12 12



analco@analco.com



analco.s.a.



www.analco.es



# AUTUMN WINTER



PU FOOTBED: 6415

SIZES: 35/43



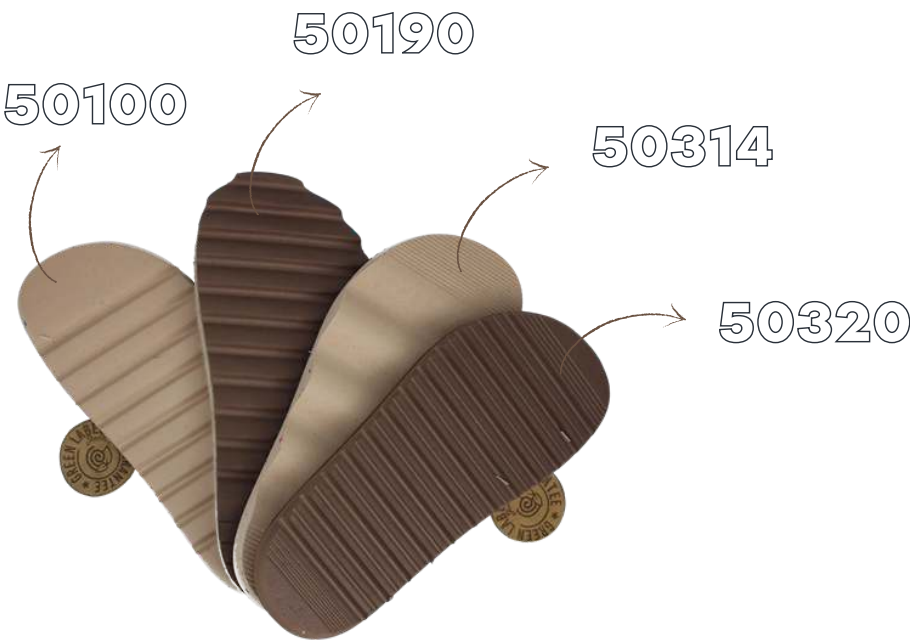
TR SOLE: 70780

SIZES: 35/43



RUBBER CORK FOOTBED: 31774

SIZES: 35/43



EVA SHEET

*simply  
comfortable*





TR SOLE: 70834

SIZES: 35/46



*comfort*



*le with  
natural fibers*







**TR SOLE: 70834**

**SIZES: 35/46**



**RUBBER CORK**

**FOOTBED: 37186**

**SIZES: 35/46**



**ANATOMICAL FOOTBED: 40863**

**SIZES: 35/42**



**PU FOOTBED: 6587**

**SIZES: 35/42**



**PU SOLE: 13574**

**SIZES: 35/42**



Home Sweet Home







TR SOLE: 70834 SIZES: 35/46



*comfortable  
slippers*



ANATOMICAL

FOOTBED: 40993

SIZES: 36/46



**PU FOOTBED: 6415**

**35/43**



*with  
recycled felt*



**PU FOOTBED: 6608**

**35/42**



# RUBBER CORK FOOTBED: 31783



*with recycled felt*



**SIZES:** 35/42

TR SOLE: 70780

SIZES: 35/43

PU FOOTBED: 6415

SIZES: 35/43





PU SOLE: 140000

SIZE: 37

*lightweight*



**PU SOLE: 13753**

**SIZES: 36/42**



**PU SOLE: 13745**

**SIZES: 39/46**





**PU SOLE: 13862**

**SIZES: 35/42**

*flexible and  
lightweight pu*





flexibility



**PU SOLE: 14049**

**SIZE: 37**



**ANATOMICAL  
FOOTBED: 40863**



choose your  
colour



trendy

**PU SOLE:** 140004

**SIZE:** 37







*style and elegance*





**PU SOLE: 13849**      **SIZES: 39/46**



for casual and  
sport shoe

**PU SOLE: 13561**    **SIZES: 35/41**



**PU SOLE: 13641**    **SIZES: 35/41**





**PU SOLE: 13736** **SIZES: 35/41**



**TR SOLE: 70700** **SIZES: 35/42**



*original*





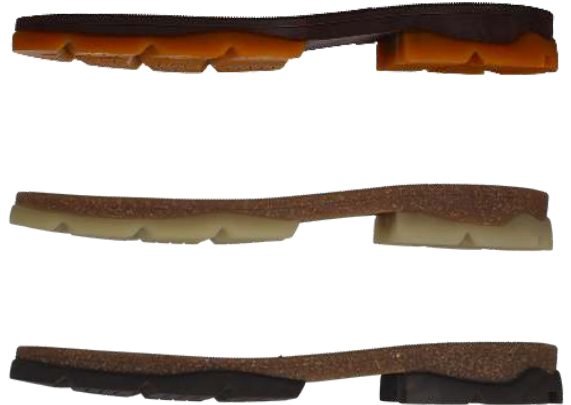
**TR SOLE: 70498**    **SIZES: 36/46**



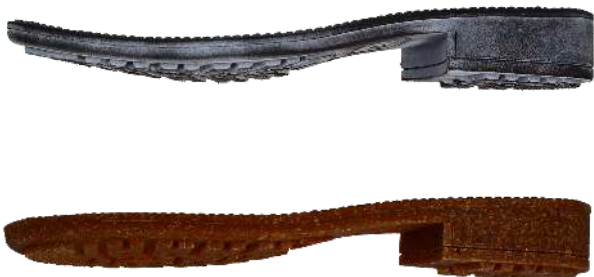
**ANATOMICAL  
FOOTBED: 40993**  
**SIZES: 36/46**



**TR SOLE:** 70848      **SIZES:** 39/46



**TR SOLE:** 70418      **SIZES:** 39/46





SUELA DE TR: 70695

TALLAS: 35/46



*tr with vegetable  
fibers and recycled  
PET*



**RUBBER SOLE: 60474**

**SIZES: 35/46**



RUBBER WITH UP TO 55% BY WEIGHT OF SHAVINGS OF REUSED RUBBER THAT COMES FROM OUR PRODUCTION SURPLUSES

**RUBBER SOLE: 60381**

**SIZES: 36/46**





**RUBBER SOLE: 60524**

**SIZES: 36/41**



*for everyday*



**PU SOLE: 14050**

**SIZE: 37**





Can you imagine all possibilities?





ANATOMICAL  
FOOTBED: 40993

*Recycled felt*

70695

*with recycled PET*

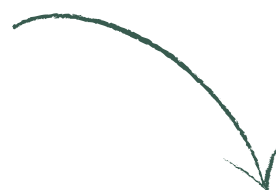
TR WITH UP TO 10% PET





# RUBBER SOLE : 60156

*Rubber manufactured with up to 50% of natural rubber*



*recycled rubber*

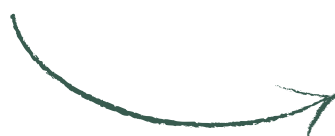


RUBBER MANUFACTURED WITH 100% CERTIFIED RECYCLED RUBBER. TO THIS PRODUCT IT CAN BE ADDED UP TO 10% BY WEIGHT OF SHAVINGS OF REUSED RUBBER AND UP TO 5% BY WEIGHT OF CORK. THE CORK USED FOR OUR PRODUCTS COMES FROM SUSTAINABLE CORK FIELDS AND IS FSC CERTIFIED

*reused rubber*



*powder from tire*



60051

PU FOOTBED: 6415

SIZES: 35/43



SHARK

50190



*Eva with shavings of  
reused rubber*

RUBEX

EXPANDED RUBBER MANUFACTURED WITH UP TO 15% OF REUSED EVA FROM OUR PRODUCTION SURPLUSES. IT IS CHARACTERIZED BY ITS LOW DENSITY AND ITS GOOD ABRASION RESISTANCE





# THERMOFORMED ANATOMICAL FOOTBEDS



recycled  
marine  
plastic





**Analco®**  
THE SHOE COMPONENTS BRAND

