



Beautiful nature-inspired learning space inside a school





Bringing nature into the learning environment

Natureworks has built a magnificent artificial fig tree inside a school building, bringing a relaxing sense of nature into the learning space.

Backed by beautiful rainforest mural panels, the tree appears to grow out of the wall at William Stimson Public School in Wetherill Park, NSW.

Designing the fig tree replica

In Australia, fig trees are mostly found in rainforest areas of Queensland and New South Wales. The Moreton Bay Fig (*Ficus macrophylla*) is one such species, growing 15-35 metres high, with a similar spread. Naturally, a full-size fig tree like that would be way too large for inside a school hall!

Rather than creating a complete fig tree replica for this project, we designed it as a **half-tree** that could be mounted against the wall. The tree branches and leaves extend into the room at a height that does not interfere with the space below.

A small patch of artificial grass at the base of the tree helps to integrate the tree into the space and is perfect for children to sit under.



Installing the tree



The completed tree (before mural panels were added)



Installing mural panels on the wall behind the tree



Fig tree in school hall



Blending the fig tree into its surroundings

To provide a naturalistic backdrop for the artificial fig tree, Natureworks designed and installed a beautiful rainforest-themed mural.

Creating the rainforest mural

Our artists painted the mural scenes onto aluminium composite wall panels, which were then adhered to the existing brick wall. We also attached some artificial ficus leaves to the mural panels at the back of the tree to create the illusion of more depth.

The mural features a realistic natural scene with trees, water and native animals. To enhance educational value, the animals are labelled with their common name. The animals include a cassowary with chicks, spotted quoll, pademelon, koala, tree kangaroo, green tree snake, rainbow lorikeets, black cockatoos and green tree frog.

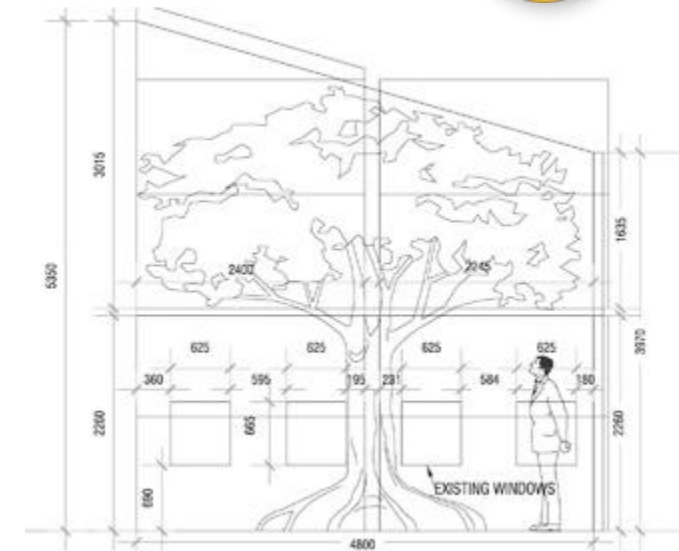
As you can see from the photos, the combined effect of the fig tree and mural creates a natural ambience inside the school building near the entry to the school library. Bringing nature into learning spaces like this has been shown to have positive effects, boosting receptiveness to learning.

"Research shows that engagement with nature can help enhance attention and memory in school children, which are critical for learning."

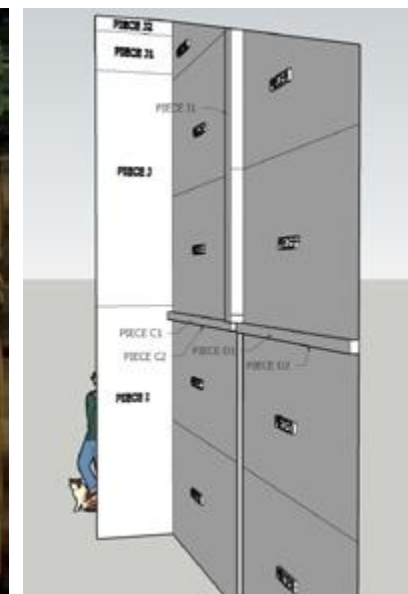
(Vella-Brodrick & Gilowska, 2022)



Sketches and plans for the rainforest mural



Completed mural behind the tree



Plan for mural panels



Enhance learning spaces with murals and realistic artificial trees

Natureworks can design and make a custom tree for you or adapt an existing design like the half fig tree to suit your space. We can also paint custom murals and provide sculptures of animals and birds to enhance the natural effect.

For an example of what's possible, see the images on this page and explore projects on our website.

To discuss ideas and get estimates for your project, contact Natureworks now!



More examples of artificial trees...

