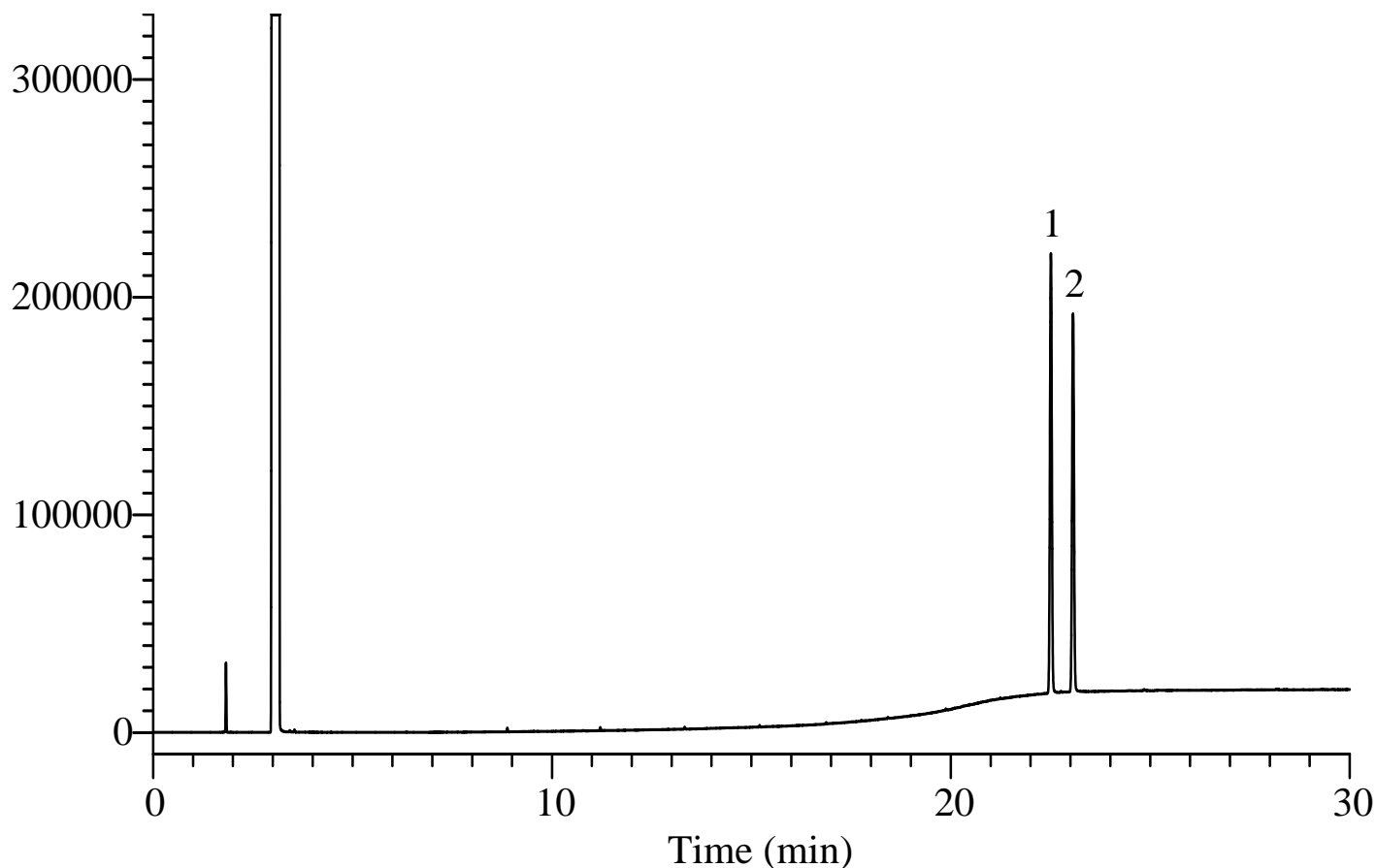


InertSearch™ for GC

InertCap® Applications

Indole, Skatole

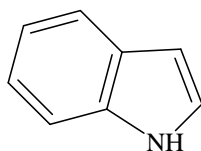
Data No. GA118-0875



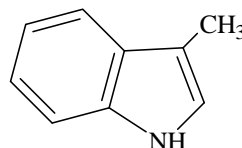
Conditions

System : GC/FID
Column : InertCap Pure-WAX
0.25 mm I.D. x 30 m df = 0.25 µm
Col. Cat. No. : 1010-68142
Col. Temp. : 40 °C (1 min hold) - 10 °C/min - 240 °C (19 min hold)
Carrier Gas : He 100 kPa
Injection : Split flow 67 mL/min
250 °C
Detection : FID Range 10⁰
250 °C
Sample Size : 1000 µg/mL in Ethyl acetate
1.0 µL

Analyte : 1. Indole
2. Skatole



1. Indole



2. Skatole

Structures are created using Chemistry 4-D Draw which is provided by ChemInnovation Software, Inc.