



Home
Technology
Club



2023

POP-UP CONTAINER UNIT

RUBY20

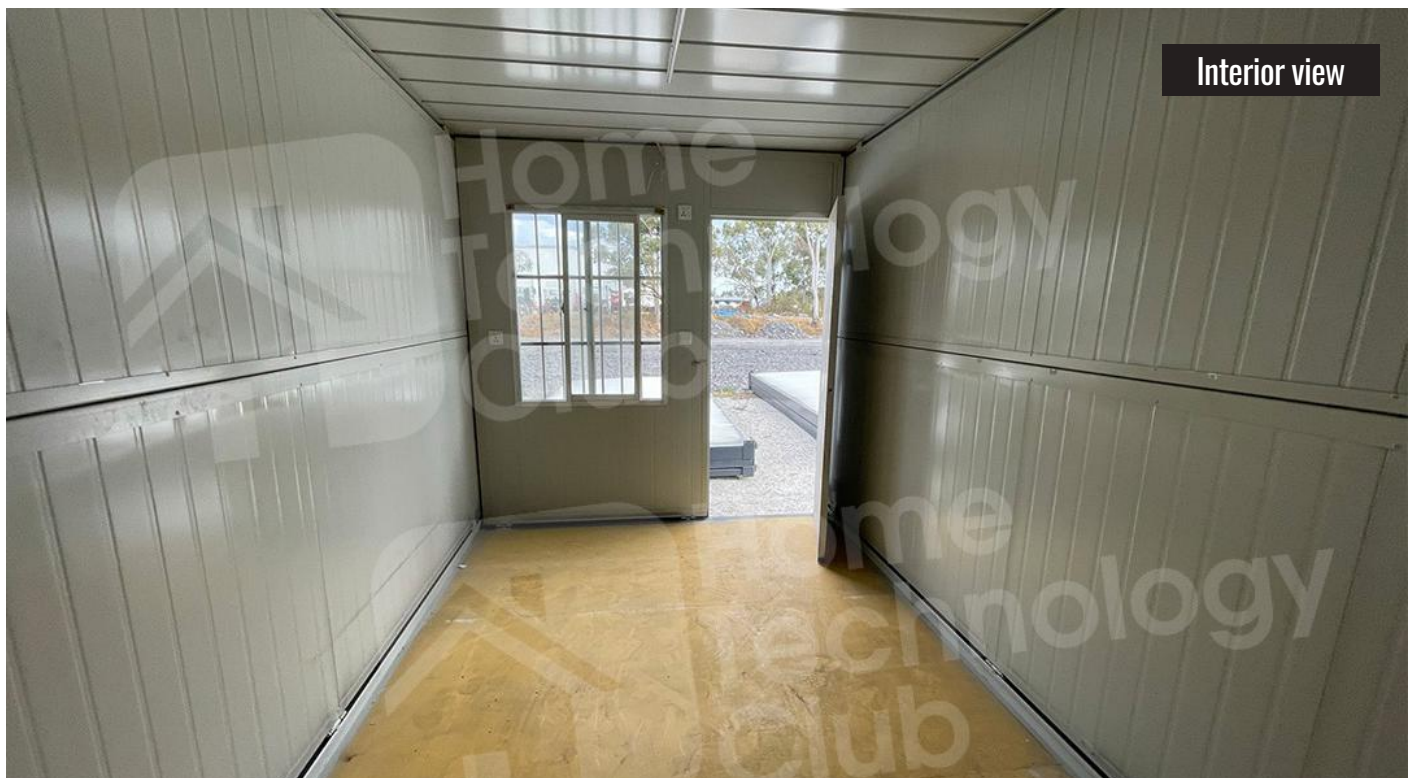
For more information, call (02) 4545 2599 or visit online at www.hometechclub.au

RUBY20

Pop-up Container Unit



Interior view



Interior view



RUBY20 exterior with A/C



Electrical box, switch & outlets

RUBY20

Pop-up Container Unit



PRODUCT SPECIFICATIONS

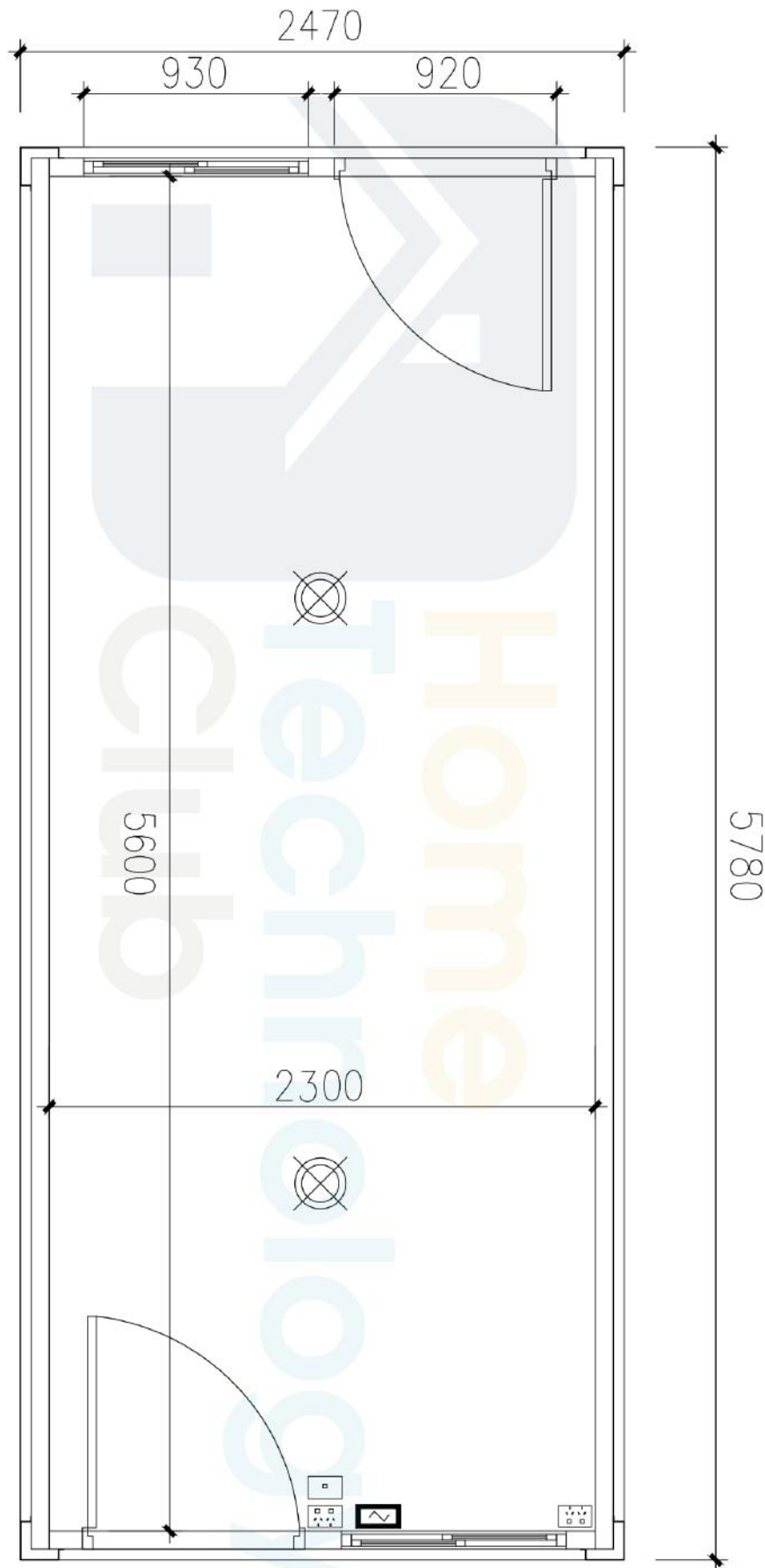
- Structure: Galvanised square tube steel
- Walls: 40mm EPS sandwich panel, polystyrene & galvanised steel
- Ceiling: 100mm EPS sandwich panel, polystyrene & galvanised steel
- Flooring: 18mm fibre cement subfloor board base, pre-fitted to steel frame, PVC lino overlay (pre-laid)
- Doors: 2 Steel doors with handle and lock
- Windows: Double glazed, Aluminium alloy frame & security bars
- Folding Hinge: Galvanised steel
- Electrical: Two power outlets, one light switch & electrical box
- 2x T5 LED Tube lights
- Gree Bora 2.5kW Split System Reserve Cycle Inverter + Wifi Air Con

PRODUCT DIMENSIONS

- Area: 14.2m² Interior area
- Exterior: 5.84m(L) * 2.5m(W) * 2.6m(H)
- Weight: Approximately 1 tonne

INTERIOR FLOORPLAN

Pop-up Container Unit



EXTERIOR DRAWING

Pop-up Container Unit

