



# LIVE AN ACTIVE URBAN LIFE

Victoria de Manila 2 puts you right at the heart of Manila's lively community. Revel in the incredible freedom of having everything you need and want in close proximity: the privileges of choice schools and universities, malls, hospitals, commercial establishments, government institutions, places of worship and tourist hotspots.

 READY FOR OCCUPANCY



Artist's Perspective

# TABLE OF CONTENTS

## 1 - 2

Project Profile

## 13 - 14

Swimming Pool

## 3 - 4

Typical Unit Floor Plan

## 15 - 16

Fitness Gym

## 5 - 6

Typical Unit Photos

## 17 - 18

Basketball Court

## 7 - 8

Combined Unit Floor Plan

## 19 - 20

Residential Lobby

## 9 - 10

Combined Unit Photos

## 21 - 22

Map

## 11 - 12

Residential Floor Plan







# ABOUT THE PROJECT

Ready for occupancy condominium located along Taft Avenue, Manila near top schools, universities, hospitals, malls, government agencies, and tourist hotspots

Near schools and universities such as Philippine Women's University, Philippine Christian University, St. Paul University, De La Salle University Manila, College of St. Benilde, Adamson University

Near key hospitals such as Philippine General Hospital, Manila Medical Center, Ospital ng Maynila, Manila Doctors Hospital

Near government institutions such as Supreme Court, Department of Justice, Court of Appeals, National Bureau of Investigation, Manila City Hall

Artist's Perspective

## Floor Level

Lowest basement level to roof deck level

**51** LEVELS



## Number of Towers

**1**



## Number of Residential Levels

**39**



## PROJECT PROFILE

Project name:  
Victoria de Manila 2

Project location:  
**1737 Taft Avenue cor. Malvar Street,  
Malate, Manila**

Stage:  
RFO

Project type:  
**Vertical**

Building type:  
Mixed-use commercial and residential

**6** Number of Elevators

**12** Commercial Levels

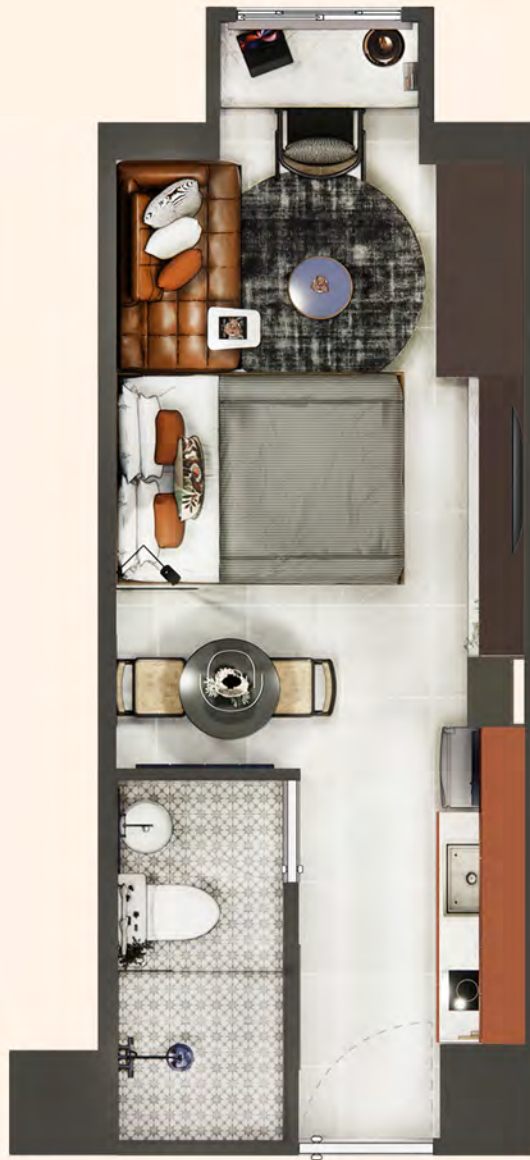
**8** Number of Parking Levels

**1,801** Total Number of Residential Units





Floor levels at basement :	0
Floor levels at podium :	12
Residential levels :	A(22), B&C (20)
Residential units :	1014
Parking levels at podium :	6
Parking levels at basement :	5
Commercial Parking :	59
Residential Parking :	300
Area Of Commercial Space (Sqm) :	9763.43
Area Of Residential Space (Sqm) :	44,829.66
Area Of Residential Amenities (Sqm) :	1101.80



Artist's perspective

**22.83** SQM  
APPROXIMATELY

**TYPICAL**  
UNIT





Artist's perspective



Artist's perspective





---

Introducing the studio unit, your cozy new home. Perfect for minimalist lovers who seek comfort and style. With an open layout that makes the most of space and vibrant finishes, every detail is designed for joy.





Artist's perspective



**45.66** SQM  
APPROXIMATELY

**COMBINED**  
UNIT



Artist's perspective



Artist's perspective





---

Experience a modern space and live life at your own pace in our spacious combined unit. Welcome to your smart lifestyle choice. Make the combined unit your new home sweet home.



# RESIDENTIAL FLOOR PLAN

## LEGEND

- Typical Units
- Upsized Units
- Elevators
- Hallways / Fire Exits
- Utilities

**FACING  
MAKATI SKYLINE  
J. NAKPIL STREET**



**TAFT AVENUE  
FACING MAKATI SKYLINE  
& ORTIGAS SKYLINE**



# 11th - 46th

Floor Plan

FACING MANILA BAY



GEN. MALVAR STREET



## AMENITIES

# SWIMMING POOL

This refreshing spot is a perfect getaway from city life. Enjoy the clear waters for swimming or soaking up the sun. Whether you're sipping a drink by the pool, playing with family, or reading a book, the area is all about fun and relaxation. Surrounded by greenery and modern loungers, it's the ideal place to enjoy the tropical vibes.

Artist's perspective







MEMBERSHIP





## AMENITIES

# FITNESS GYM

Supercharges your fitness journey with state-of-the-art modern equipment, a wide variety of free weights, and engaging group classes all set in a fun and motivating atmosphere. Our friendly, knowledgeable trainers are always ready to support and encourage you through every workout, helping you get stronger, healthier, and more confident. Join us today and truly feel the amazing difference in your fitness experience!

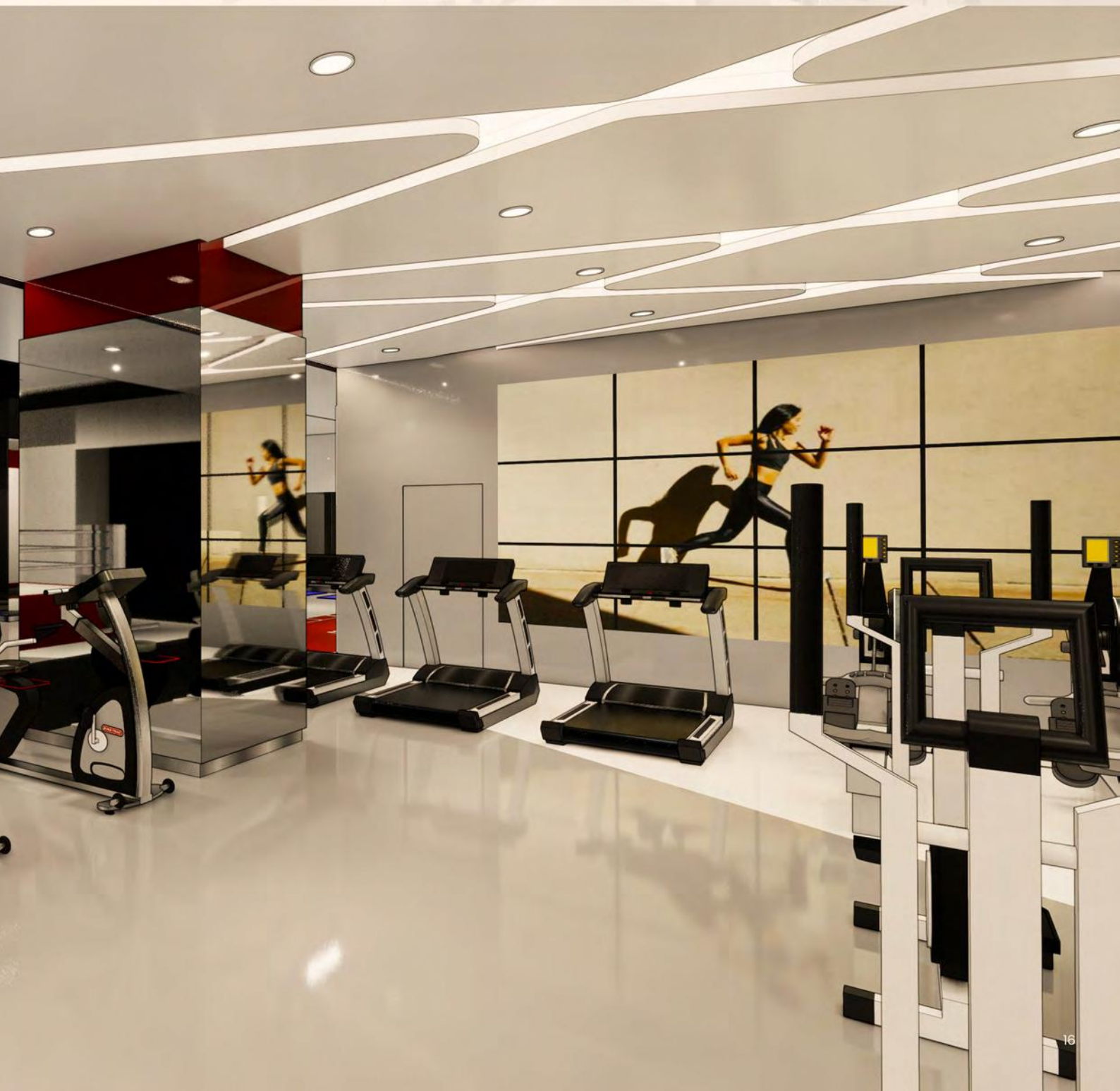
Artist's perspective







MEMBERSHIP





## AMENITIES

# BASKETBALL COURT

Adjacent to the court are areas for spectators to relax and enjoy the game, along with a few shady spots for those who prefer a more laid-back vibe. So lace up your sneakers, gather your crew, and get ready to break a sweat at the Victoria de Manila 2 basketball court! It's not just a place to play; it's where friendships are forged and memories are made!

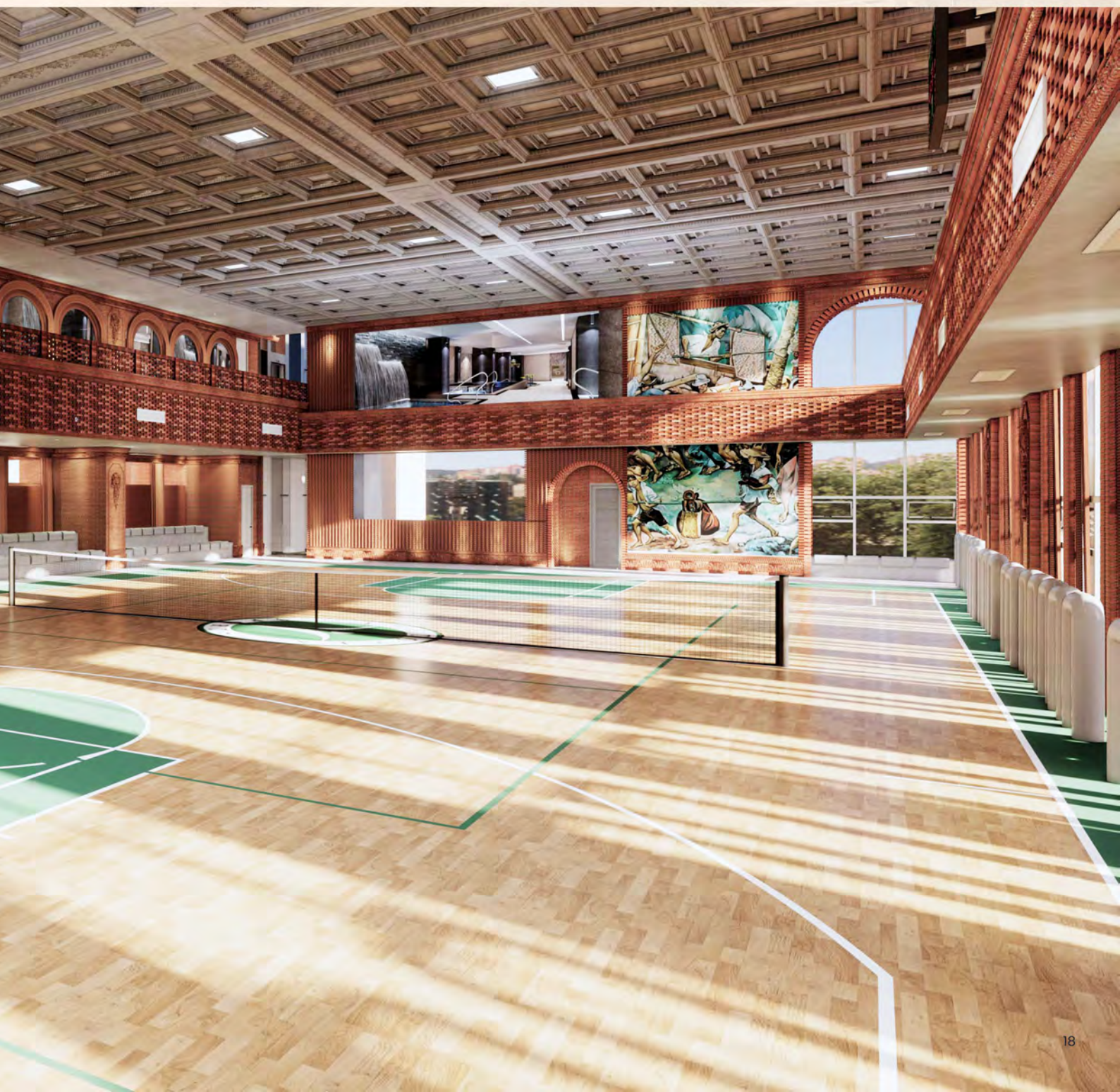
Artist's perspective







MEMBERSHIP





## FACILITIES

# RESIDENTIAL LOBBY

Whether you're waiting for a guest or catching up on a good book, the Victoria de Manila 2 residential lobby is the perfect blend of sophistication and warmth, making every entrance feel like a grand occasion. Welcome home!

Artist's perspective







## DIRECTORY

- 9 HOTEL
- 8 HOTEL LOBBY  
RESTAURANT
- 7 BASKETBALL  
BADMINTON  
GYM
- BOWLING  
BILLIARDS
- 6 WATER SPA  
FUNCTION ROOM
- 5 SALES AND MEMBERSHIP  
TENNIS  
KTV  
GF COMMERCIAL

RESIDENTIAL



VICTORIA  
SPORTS



# LOCATION MAP

## NEARBY ESTABLISHMENTS



### SCHOOLS

1 Philippine Womens University	70 m
2 Philippine Christian University	90 m
3 St. Paul University	270 m
4 De La Salle University Manila	1.1 km
5 Philippine Normal University	1.5 km
6 Adamson University	1.7 km
7 Mapua University	2.7 km
8 Pamantasan ng Lungsod ng Maynila	2.8 km
9 Lyceum of the Philippines University	2.8 km
10 San Beda University	3.5 km
11 Colegio de San Juan Letran	3.8 km
12 Arellano University	4 km



### MALLS

13 Robinsons Place Manila	800 m
14 SM City Manila	2.0 km
15 Cash & Carry Mall	3.7 km
16 Shopwise Circuit	4.1 km



### GOVERNMENT OFFICES

17 Supreme Court	750 m
18 Department of Justice	950 m
19 Court of Appeals	1.2 km
20 National Bureau of Investigation	1.9 km
21 Manila City Hall	2.0 km
22 American Embassy	2.2 km



### HOSPITALS:

23 Philippine General Hospital	500 m
24 Manila Medical Center	1.1 km
25 Ospital ng Maynila Medical Center	1.5 km
26 Manila Doctors Hospital	1.5 km



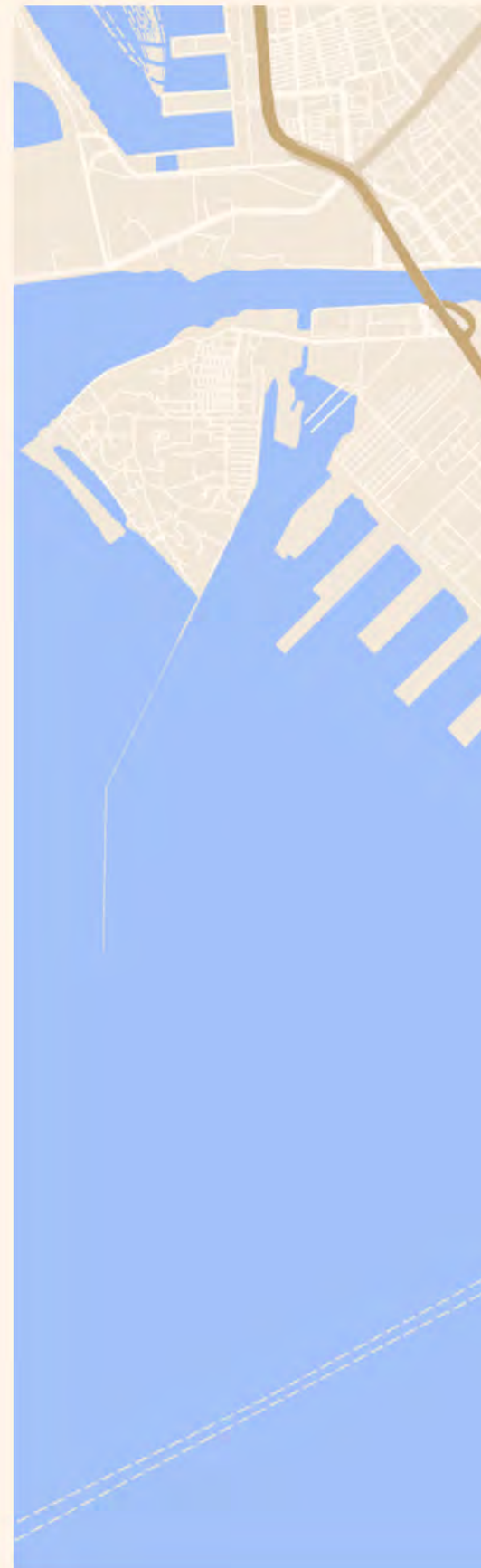
### CHURCHES:

27 St. Anthony Church	1.1 km
28 Malate Church	1.1 km
29 San Agustin Church	2.8 km
30 Manila Cathedral	4.3 km

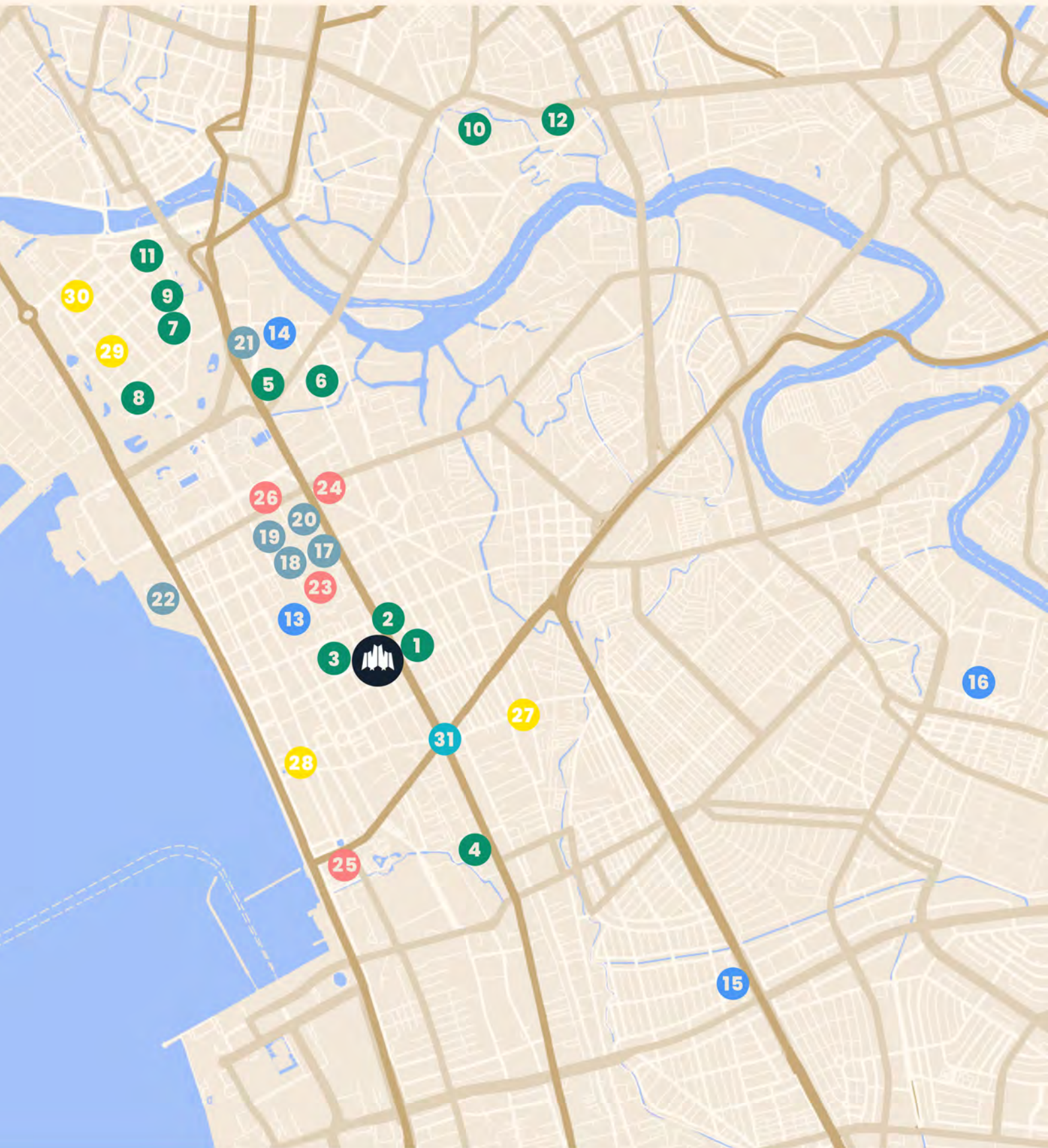


### TRANSPORT HUBS:

31 LRT Quirino Station	550 m
------------------------	-------









# A PROJECT OF:



New San Jose Builders, Inc.



## GET IN TOUCH

[info@nsjbi.com.ph](mailto:info@nsjbi.com.ph)

We will help you make your dream a reality

---

### OFFICE

Panay Ave, Cor Timog Ave.,  
Brgy, Paligsahan Quezon City

### HELP

(02) 8442 7777  
+63 917 800 2206

### FOLLOW US

newsan joseofficial  
newsan josebuildersofficial  
newsan josebuildersofficial

### WEBSITE:

[www.nsjbi.com](http://www.nsjbi.com)



---

### DEVELOPER:

New San Jose Builders, Inc.

### DHSUD NCR

AA-2025/01-4786

### OWNER:

Diamond Land Resources, Inc.

### DHSUD LS No.

029973

### DATE COMPLETED:

DECEMBER 31, 2018