

MAME 49

GOLD RUSH

GALA

WINNERS BOOK

Friday, April 24, 2026

Casa Real at Ruby Hill, Pleasanton



BUILDING INDUSTRY ASSOCIATION



EMCEE & EXECUTIVE OFFICER



On behalf of the BIA Bay Area Board of Directors, I want to thank you for your passion and commitment to our industry. I hope you take a moment to reflect on all you've accomplished with your peers.

MAME is all about celebrating the incredible work, dedication, and achievements that have shaped this past year. It's truly an honor to serve as your emcee.

A handwritten signature in white ink, appearing to read "Bobby Glover".

BOBBY GLOVER
EMCEE & BIA Executive Officer



BIA BAY AREA BOARD OF DIRECTORS

EXECUTIVE COMMITTEE

TODD CALLAHAN

Toll Brothers
Chair

ZEF JIMENEZ

HMH Engineers
Vice Chair - Associates

EMILY BOYD

Brookfield Residential
Immediate Past Chair

ADAM HIEB

Meritage Homes
Vice Chair - Builders

BRIAN OLIN

Lennar Homes
Secretary/Treasurer

BOBBY GLOVER

BIA Bay Area
Executive Officer

BOARD OF DIRECTORS

STEVE ABBS

Davidon Homes

LANCE FREED

SummerHill Homes

JENNIFER MASTRO

SDG Architects

JACKIE SMYTH

vanderToolen Associates

CHIARA BASSO

Meritage Homes

CRISAND GILES

HomeAid N. California

KATY JEANNE MUNOZ

D.R. Horton

ZIED SOUISSI

Lennar Mortgage

TONY BOSOWSKI

Trumark Homes

JOE GUERRA

Brookfield Residential

PAMELA NIETING

Nieting Development

KELLEY STOUGH

Lennar Homes

JULIANN CRETSINGER

Signature Homes

DON HOFER

Shea Homes

ANGELA PEDRONCELLI

Qualus

ALLI SWEENEY

Toll Brothers

COLLEEN EDWARDS

River Islands Development

MICHELE JOY

Brookfield Residential

JENNIFER SKILLINGS

Taylor Morrison

DANA TSUBOTA

DeNova Homes

ANGELO FAROOQ

AL Homes

JEREMY LEACH

WHA

MONIQUE SMALL

D.R. Horton

SCOTT YODALL

The Hanover Company

VINCE FLETCHER

Integral Communities

MICHAEL MACDONALD

KB Home

JEFF SMITH

Regis Homes

WENDI ZUBILLAGA

Citadel Roofing & Solar

STAFF

PAUL CAMPOS

Sr. Vice President of Governmental Affairs
& General Counsel

EVELYN RAGONTON

Events Manager

CRISAND GILES

Executive Director
HomeAid N. California

LISA VORDERBRUEGGEN

East Bay Executive Director of
Governmental Affairs

PAT SAUSEDO

South Bay
Governmental Affairs

ROBIN RAU

Marketing & Programs Manager
HomeAid N. California

ZACH OTTING

Controller

DENNIS MARTIN

South Bay
Governmental Affairs



SMC PRESIDENT



On behalf of the BIA Bay Area 2026 Sales & Marketing Council Board of Directors and our nearly 400 engaged member companies, it is our honor to welcome you this evening as we celebrate the very best of our industry.

I would like to extend sincere appreciation to our exceptional MAME Chair, Alexis Ashley, and the planning committee. Your creativity, expertise, and dedication brought this outstanding event to life. Thank you to the SMC Board for your commitment and the many efforts that continue to elevate our mission and support our members.

To our builder, associate, and trade partner sponsors, we are deeply grateful for your generous support and partnership. Your contributions are essential to the success of this evening.

MAME is a celebration of excellence, innovation, and the strength of our community. We hope the evening was memorable and filled with inspiration, connection, and pride in all we've accomplished together. Here's to continued success, new opportunities, and a bright year ahead for our Golden Industry.

Zied Souissi

ZIED SOUISSI

SMC PRESIDENT - LENNAR MORTGAGE



SMC BOARD OF DIRECTORS

ZIED SOUISSI

SMC President
Division Manager
Lennar Mortgage

ALEXIS ASHLEY

SMC VP & MAME Chair
Marketing Manager
DAHLIN Architecture | Planning | Interiors

TERRI EVERHART

SMC Secretary
Builder Sales Rep
HomeSite Services

MICKEY O'REGAN

Immediate SMC Past President
Director of Sales
New Homes Media

ERICA DRISKELL

California Sales Manager
Honey Bucket

STEPHANIE ESTRELLADO

Director of Marketing
Trumark Homes

CATHY GROMACKI

Mortgage Advisor, Builder Specialist
Preferred Mortgage Partners

JONEL JACKSON

Retired
U.S. Bank

KELLY KRHOUN

President
Creative Design Group

ANNIE VERBER

Loan Officer
Lennar Mortgage

JULIE WRIGHTON

Marketing Director
Lennar Homes

THANK YOU SPONSORS

PLATINUM SHIMMER

Brookfield Residential

Gunn Jerkens

HomeSite Services

Lennar Homes

Toll Brothers

Trumark Homes

SILVER GLEAM

BLR Visual Communications

Chameleon Design

DAHLIN Architecture | Planning | Interiors

Gauger + Associates

LogoBoss

U.S. Bank

GOLDEN GLOW

KTGY

PulteGroup

Rigo Cabinets

BRONZE EMBER

Creative Design Consultants

Fusion Sign and Design

Get Community

New Homes Media

The Stone Group

SPECIALTY SPONSORS

GOLDEN HOUR GENERAL RECEPTION: NGB Construction

RADIANT VIP RECEPTION: Veev by Lennar

GILDED TOUCH DECOR: Shea Homes

LIQUID GOLD WINE: Power Systems Design Group

24 KARAT MOMENTS PHOTO STATION: Creative Design Group

GOLDEN ENCORE RECEPTION: HomeSite Services

TEAM PMP



The MAME judging is managed by TEAM PMP, independently of the BIA|Bay Area, its officers, or members.

For over 40 years, TEAM PMP has administered, produced, and directed home building awards competitions across the country. As originators of the MAME (Major Achievement in Marketing Excellence) Award concept, TEAM PMP is privileged to handle awards programs of all sizes including the Bay Area MAME Awards, the National Sales & Marketing Awards for NAHB, and the Gold Nugget Awards for PCBC.

Shane and Lisa Parrish strive to provide the highest standard of excellence for industry recognition.

JUDGES PROCEDURES

MARKETING AND DESIGN CATEGORIES

Judges review the marketing entries by category and score each based upon the written criteria. Judges review the entries on screen, hear the marketing statements submitted, and discuss the aspects of the entry. After all entries are reviewed by the group, judges score ballots independently.

PROFESSIONAL ACHIEVEMENT CATEGORIES

Judges review the submitted nomination forms then meet with the qualified candidates for a 10-minute interview. Candidates are scored based upon the written criteria and their interviews. After all entries within a category are interviewed, judges score their ballots independently.

COMMUNITY OF THE YEAR

Judges review each applicant's written statement as a group, then tour each community. After tours are completed, judges score their ballots independently.

BUILDER OF THE YEAR

Judges review the submitted applications, which require responses to mandatory questions with specific point values. Judges read each statement as a group, then tour each. After all entries are reviewed, the judges score their ballots independently. Ballots are all submitted for final tally to judging chairman Shane Parrish.

JUDGES



PAM AVIRETT

VP Marketing & Communications
Master Planned Communities
RealBerry Development
Denver, CO



DIANA ELLIS

Principal
Ellis Design Group
Denver, CO



CASEY NEEDHAM

Marketing Director
MI Homes
Columbus, OH



PIERRETTE TIERNEY

Chief Revenue and Marketing Officer
Magleby Construction
Park City, UT



PAUL GORTZIG

(PROFESSIONAL CATEGORIES ONLY)

Director of Sales & Training
Bokka Group
Denver, CO

BEST LOGO DESIGN



FRANCIS RANCH

By: Trumark Homes

Design: Gunn Jerkens

FINALISTS

Orchard Grove

By: Shea Homes

Design: Gauger + Associates

The Lafayette

By: SummerHill Apartment Communities

BEST OVERALL ADVERTISING CAMPAIGN



ELLIS

By: Surland Companies

Design: Gunn Jerkens

FINALISTS

Fifth Edition

Design: The Stone Group

Tracy Hills

By: Lennar Homes

Design: Gunn Jerkens

Francis Ranch

By: Trumark Homes

Design: Gunn Jerkens

The Enclave

By: Shea Homes

Design: Gauger + Associates

BEST SIGNAGE



FRANCIS RANCH

By: Trumark Homes

Design: Gunn Jerkens

FINALISTS

The Dunes

By: Shea Homes

Design: Gauger + Associates

Veev Construction Fence Banners

By: Veev by Lennar

Ellis

By: Surland Companies

Design: Gunn Jerkens

The Lafayette

By: SummerHill Apartment Communities

BEST GRAPHIC CONTINUITY



FRANCIS RANCH

By: Trumark Homes

Design: Gunn Jerkens

FINALISTS

Orchard Grove
By: Shea Homes
Design: Gauger + Associates

Ellis
By: Surland Companies
Design: Gunn Jerkens

Tracy Hills
By: Lennar Homes
Design: Gunn Jerkens

The Lafayette
By: SummerHill Apartment Communities

BEST USE OF TECHNOLOGY



LAGOON VALLEY VISITORS CENTER INTERACTIVE EXPERIENCE (MARKETING TECHNOLOGY)

By: Triad Lagoon Valley
 Design: Gauger + Associates

The future of homebuilding

At Veev, we've reimagined every layer of the homebuilding process to deliver a smarter, stronger, and more sustainable way to build. Our proprietary wall system integrates essential infrastructure with precision engineering, while our use of durable, fire-resistant materials like light gauge steel ensures lasting quality and peace of mind. Designed for energy efficiency, seismic stability, and minimal waste, Veev homes set a new standard. Building not just for today, but for the future we all share.

Precision-Engineered Frame

Galvanized Cold Formed Steel (CFS) offers exceptional durability that outperforms traditional wood. It's non-combustible, termite-resistant, and won't warp or swell.



VEEV – MODEL E (BUILDING TECHNOLOGY)

By: Veev by Lennar

FINALISTS

The Meadows Fly Through
 By: Shea Homes
 Design: Get Community

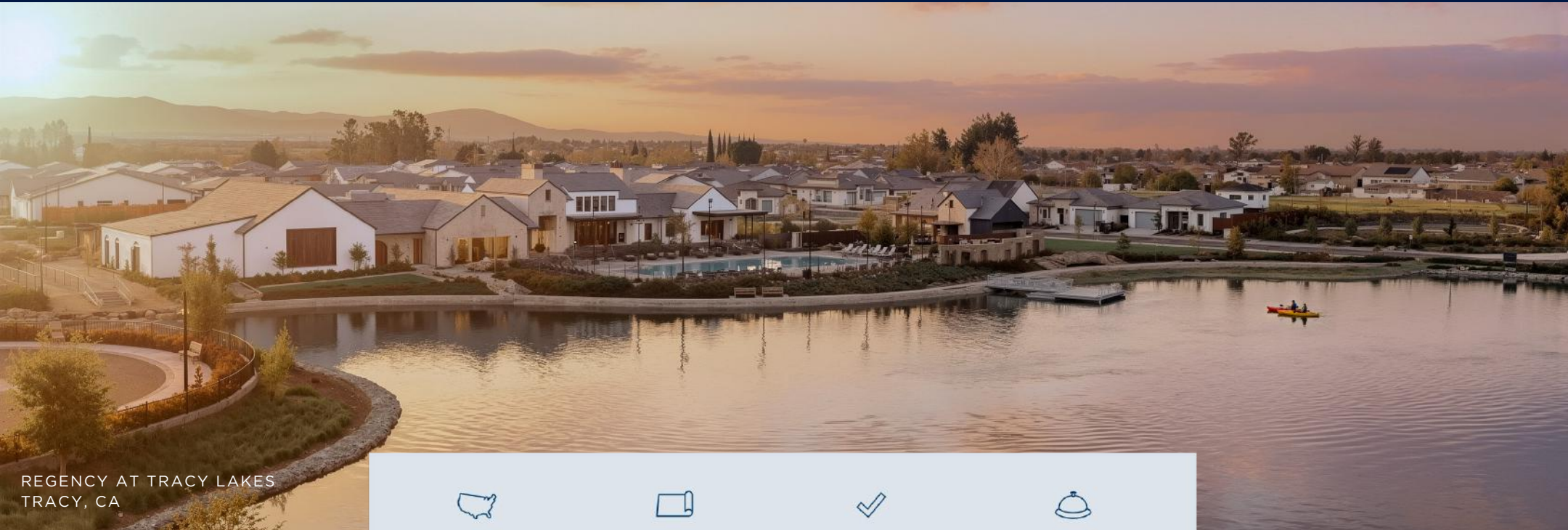


LENNAR®

TRACY HILLS

THE TOLL BROTHERS ADVANTAGE

MAKE THE CLEAR CHOICE



REGENCY AT TRACY LAKES
TRACY, CA

	+		+		+	
PRESTIGIOUS LOCATIONS		DISTINCTIVE ARCHITECTURE		UNRIVALED CHOICE		EXTRAORDINARY EXPERIENCE

55+ ACTIVE ADULT | TOWNHOMES | CONDOMINIUMS | SINGLE FAMILY

Toll Brothers
AMERICA'S LUXURY HOME BUILDER®

BEST SOCIAL MEDIA ENGAGEMENT



FIFTH EDITION

Design: The Stone Group

FINALISTS

Francis Ranch
By: Trumark Homes
Design: Gunn Jerkens

The Dunes
By: Shea Homes
Design: Get Community

Ellis
By: Surland Companies
Design: Gunn Jerkens

Tracy Hills
By: Lennar Homes
Design: Gunn Jerkens

BEST SPECIAL EVENT



TRACY HILLS BLOOM & EXPLORE EVENT

By: Lennar Homes

Design: Gunn Jerkens



PCBC REIMAGINED

By: California Building Industry Association (CBIA)

Design: Gunn Jerkens

FINALISTS

Promenade at The Dunes – Promenade Event Series

By: Shea Homes

Design: Gauger + Associates

Lagoon Valley Fall Fest

By: Triad Lagoon Valley

Design: Gauger + Associates

Model X Launch

By: Veev by Lennar

Regency at Tracy Lakes Special Event

By: Toll Brothers

BEST WEBSITE



MOUNTAIN HOUSE

Design: Gunn Jerkens

FINALISTS

Francis Ranch

By: Trumark Homes

Design: Gunn Jerkens

The Dunes Promenade

By: Shea Homes

Design: Gauger + Associates

Relaunch of Veev.com

By: Veev by Lennar

Ellis

By: Surland Companies

Design: Gunn Jerkens

BEST SALES/LEASING OFFICE DESIGN



THE LAFAYETTE

By: SummerHill Apartment Communities

Design: Ryan Young

FINALISTS

Arroyo Crossings
By: Trumark Homes
Design: Fusion Sign and Design

Winton Wonderland
By: Veev by Lennar

BEST OUTDOOR LIVING SPACE OF A MODEL



ROOFTOP AT THE DUNES

By: Shea Homes

Design: TRIO

FINALISTS

Orchid at Francis Ranch, Residence 3

By: Trumark Homes

Design: Creative Design Consultants

ENHANCE. INSPIRE.

Celebrate.



Trumark Homes is a proud sponsor of the 2026 MAME Bay Area Awards. Thank you for your passion, innovation and commitment to success. CONGRATULATIONS!

TRUMARKHOMES



Congratulations

NOMINEES & WINNERS

of the

BIA 48TH MAME AWARDS



PULTEGROUP

[PULTE.COM/NORTHERNCALIFORNIA](https://pulte.com/northern-california)



CHAMELEON DESIGN

Congratulations to all the MAME Awards finalists & winners!



BLR

**Visual
Communications**
Signage for Every Builder

*Congratulations to
all the Winners!*

BEST AMENITY SPACE OF A MULTIFAMILY COMMUNITY



THE LAFAYETTE

By: SummerHill Apartment Communities

Design: Ryan Young



REGENCY AT TRACY LAKES CLUBHOUSE (55+ COMMUNITY)

By: Toll Brothers

FINALISTS

Village Square Park at The Dunes

By: Shea Homes

Design: Creative Design Consultants

BEST INTERIOR MERCHANDISING DETACHED MODEL UNDER \$750K



THE POINTE

By: Taylor Morrison

Design: Creative Design Group

CREATE BETTER RESULTS

GunnJerkens.com

BRANDING | MARKETING



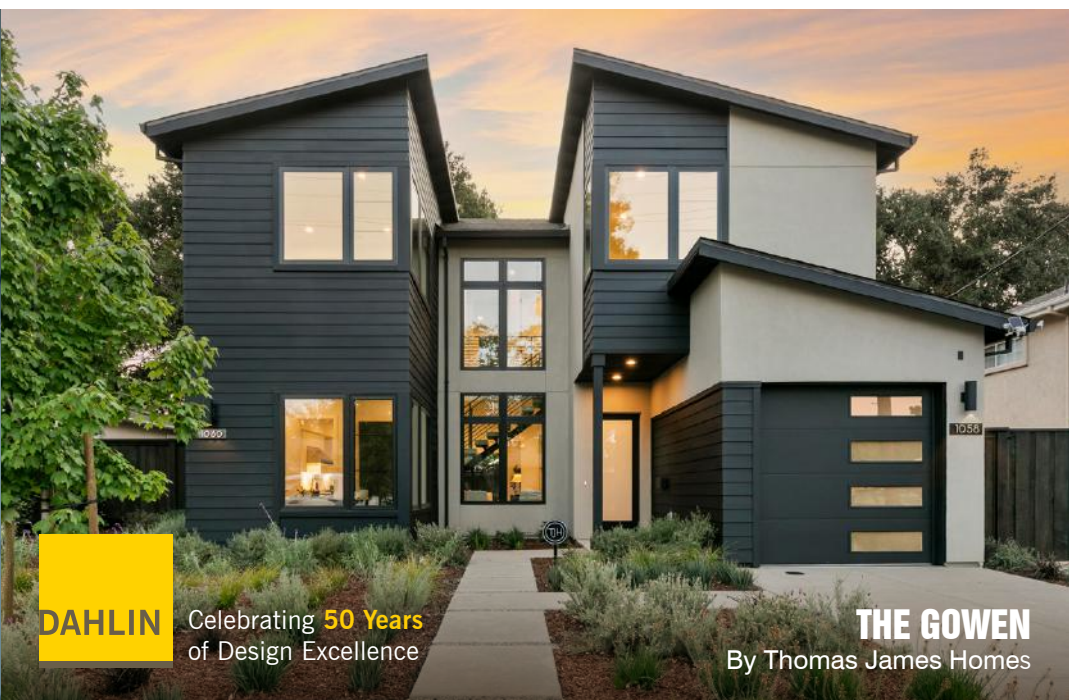
DESIGNED
FOR REAL
LIFE.

Shea
HOMES®

The *BEST PLACES* TO CALL HOME



Brookfield
Residential



DAHLIN Celebrating **50 Years**
of Design Excellence

THE GOWEN
By Thomas James Homes



CREATIVE
DESIGN GROUP
MODEL HOME & COMMERCIAL INTERIORS

Congratulations MAME winners
and finalists



logoboss
SEW IT. INK IT. ETCH IT.

your logo everywhere.

BEST INTERIOR MERCHANDISING DETACHED MODEL \$750K TO \$1.5M



SEQUOIA AT AVINA, PLAN 4

By: PulteGroup

FINALISTS

Silverleaf at Lakeshore - Lupine
By: Taylor Morrison
Design: Creative Design Group

Trailview at Lakeshore - Marigold
By: Taylor Morrison
Design: Creative Design Group

Orchard Grove, Plan 2
By: Shea Homes
Design: Mullen & Bergstrom

BEST INTERIOR MERCHANDISING DETACHED MODEL OVER \$1.5M



MARIGOLD AT FRANCIS RANCH, RESIDENCE 3

By: Trumark Homes

Design: Chameleon Design

FINALISTS

Apricot Estates, Residence 3

By: Trumark Homes

Design: Creative Design Consultants

Orchid at Francis Ranch, Residence 1

By: Trumark Homes

Design: Creative Design Consultants

Azure at Francis Ranch, Residence 3

By: Trumark Homes

Design: Creative Design Consultants

Marigold at Francis Ranch, Residence 1

By: Trumark Homes

Design: Chameleon Design

BEST INTERIOR MERCHANDISING ATTACHED MODEL UNDER \$1.3M



JASMINE AT FRANCIS RANCH, RESIDENCE 1 TOWNHOME

By: Trumark Homes

Design: Chameleon Design

FINALISTS

Jasmine at Francis Ranch, Residence 2 Townhome

By: Trumark Homes

Design: Chameleon Design

Serenity, Plan 3

By: Shea Homes

Design: Mullen & Bergstrom

Manzanita Park – Redbud Elite

By: Toll Brothers

The Lafayette

By: SummerHill Apartment Communities

Design: Ryan Young

BEST INTERIOR MERCHANDISING ATTACHED MODEL OVER \$1.3M



JASMINE AT FRANCIS RANCH, RESIDENCE 2 DUET

By: Trumark Homes

Design: Chameleon Design

FINALISTS

Viewpoint at The Heights – Plan B
By: PulteGroup

Jasmine at Francis Ranch, Residence 1 Duet
By: Trumark Homes
Design: Chameleon Design

Parkside West - Odin
By: Toll Brothers
Design: SDG Architects

28 Fifty, Plan 3
By: SummerHill Homes
Design: Creative Design Group

BEST ARCHITECTURAL DESIGN DETACHED HOME 2,501 TO 3,000 SQ. FT.



THE GOWEN

By: Thomas James Homes

Design: DAHLIN Architecture | Planning | Interiors

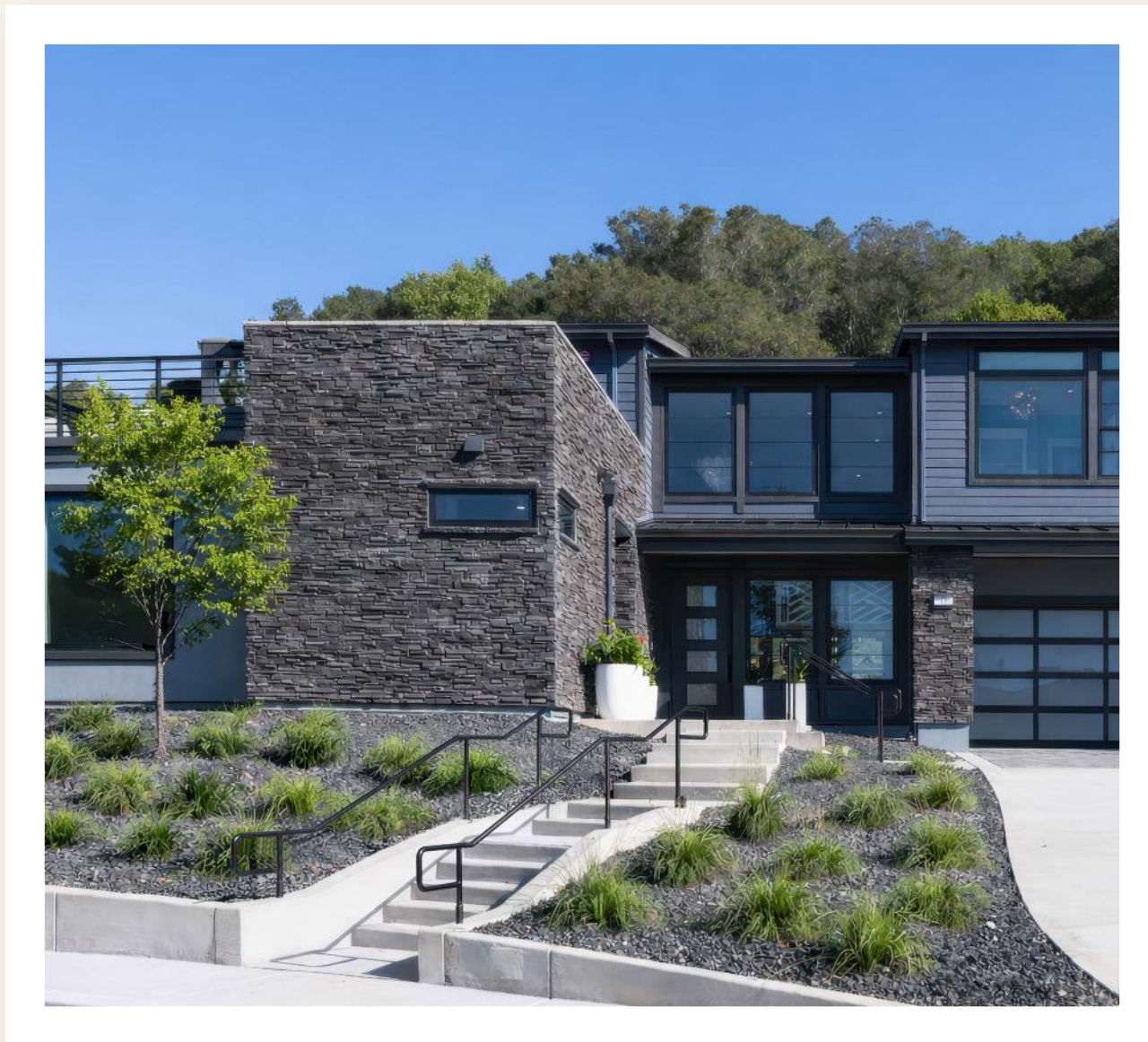
FINALISTS

Marigold at Francis Ranch, Residence 2

By: Trumark Homes

Design: KTG Y

BEST ARCHITECTURAL DESIGN DETACHED HOME OVER 3,000 SQ. FT.



LEGACY AT LUCAS VALLEY

By: Haven Development

Design: DAHLIN Architecture | Planning | Interiors

FINALISTS

Orchid at Francis Ranch, Residence 1
By: Trumark Homes
Design: KTG Y

Apricot Estates, Residence 2
By: Trumark Homes
Design: SDG Architects

1566 Larkspur Drive
By: Thomas James Homes

Azure at Francis Ranch, Residence 2
By: Trumark Homes
Design: KTG Y

Model X
By: Veev by Lennar
Design: WHA

BEST ARCHITECTURAL DESIGN ATTACHED HOME UNDER 2,000 SQ. FT.



PARKSIDE WEST - KENAI

By: Toll Brothers

Design: SDG Architects

FINALISTS

Serenity
By: Shea Homes
Design: KTG Y

BEST ARCHITECTURAL DESIGN ATTACHED HOME OVER 2,000 SQ. FT.



SERENITY

By: Shea Homes

Design: KTG Y

FINALISTS

Acacia

By: Dividend Homes

Design: DAHLIN Architecture | Planning | Interiors

Jasmine at Francis Ranch, Residence 2 Townhome

By: Trumark Homes

Design: KTG Y

Manzanita Park – Redbud Elite

By: Toll Brothers

Design: DAHLIN Architecture | Planning | Interiors

Parkside West - Odin

By: Toll Brothers

Design: SDG Architects

BEST ARCHITECTURAL DESIGN OF A MULTIFAMILY COMMUNITY



PARKSIDE WEST

By: Toll Brothers

Design: SDG Architects

FINALISTS

Serenity
By: Shea Homes
Design: KTG Y

The Lafayette
By: SummerHill Apartment Communities
Design: KTG Y

Manzanita Park
By: Toll Brothers

BEST KITCHEN DESIGN



ORCHID AT FRANCIS RANCH, RESIDENCE 2

By: Trumark Homes

Design: KTGy, Creative Design Consultants

FINALISTS

Serenity, Plan 5

By: Shea Homes

Design: KTGy, Mullen & Bergstrom

1265 Bay Laurel Drive

By: Thomas James Homes

Design: DAHLIN Architecture | Planning | Interiors

BEST PRIMARY SUITE DESIGN



MAINSTAY AT RIVER ISLANDS – PLAN 3

By: PulteGroup

FINALISTS

Orchid at Francis Ranch, Residence 2
By: Trumark Homes
Design: KTGy, Creative Design Consultants

Apricot Estates, Residence 3
By: Trumark Homes
Design: SDG Architects

BEST SPECIALTY ROOM



SERENITY, PLAN 6 – WHISKEY ROOM

By: Shea Homes

Design: KTGy, Mullen & Bergstrom

FINALISTS

Model X - ADU

By: Veev by Lennar

Design: WHA

Sponsors of the BIA BAY AREA M.A.M.E. Awards



The Design Studio
By HOME SITE SERVICES

HomeSiteServices.net



Congratulations to Our Partners

Together we deliver award winning spaces that enliven and enrich people's everyday lives.

ktgy

ktgy.com



Creating a world of limitless possibilities

Congratulations to the 2026 MAME Award winners.

» Find us online at [usbank.com](https://www.usbank.com) or visit one of our local branch locations.



Member FDIC.
©2026 U.S. Bank 2283174



5th

ANNUAL CORNHOLE TOURNAMENT



October 7, 2026
Wente Family Vineyards
Livermore





GAUGER + ASSOCIATES
ADVERTISING | BRANDING | DESIGN



veev
by LENNAR

COMMUNITY OF THE YEAR



FRANCIS RANCH (MASTER PLANNED COMMUNITY)

By: Trumark Homes
 Associates: Gunn Jerkens



ORCHARD GROVE (DETACHED COMMUNITY)

By: Shea Homes
 Associates: Gauger + Associates,
 Get Community, Mullen & Bergstrom

FINALISTS

Ellis
 By: Surland Companies
 Associates: Gunn Jerkens

Tracy Hills
 By: Lennar Homes
 Associates: Gunn Jerkens

COMMUNITY OF THE YEAR



SERENITY (ATTACHED FOR SALE COMMUNITY)

By: Shea Homes

Associates: Gauger + Associates,
Get Community, Mullen & Bergstrom



THE LAFAYETTE (ATTACHED FOR RENT COMMUNITY)

By: SummerHill Apartment Communities

Associates: KTGy, Ryan Young

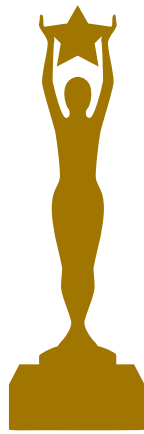
BUILDER OF THE YEAR



TRUMARKHOMES

FINALISTS





To Order a Duplicate Trophy
Visit or Scan
www.BIABayArea.org/MAMETrophy



SAVE THE DATE

MAME 50
May 14, 2027

PEOPLE'S CHOICE: MOST INSTAGRAMMABLE MODEL HOME



GIORNO
Veev by Lennar

FINALISTS

Shea Homes

SALES ROOKIE OF THE YEAR



ALEXIS KING

Shea Homes

INDUSTRY RISING STAR OF THE YEAR



DYLAN JOHNSON

Shea Homes

FINALISTS

Avery Gairaud
D.R. Horton

Power Systems Design Group

California's Leading Dry Utility Consultant & Design Company

For 40+ years, we've helped Northern California's most ambitious developments get energized - with clarity, on time, on budget, and without the usual dry utility headaches.

We specialize in all aspects of the dry utility process including design and construction sets for Electric & Natural Gas Utility Companies, Public Street Lighting Systems, Telco & CATV substructures and coordinated Joint Trench composite plans. We are PG&E approved applicant designers for electric and gas (QAD Certified).

From 15,000 homes in master planned communities to high-stakes commercial, office space, life science and lab hubs, we engineer and coordinate every dry utility detail - providing clarity, eliminating roadblocks, cutting delays, and keeping even the most complex projects moving forward.

With every new challenge and an evolving utility landscape, we continue to set the standard for dry utility design that's as dependable as it is innovative.

We work closely with utilities, AHJs, and project stakeholders to ensure all dry utility designs meet technical, regulatory, and logistical requirements. Our familiarity with regional standards accelerates reviews and clears paths for faster approvals.



POWER
SYSTEMS
DESIGN

1853 Bonanza Street, Walnut Creek, CA 94596 - www.powersystemsdesign.net - 925-933-8485 - info@powersystemsdesign.net

SAVE THE DATE

MAME

50

MAY 14, 2027 | SAN FRANCISCO



BEST BUILDER COMPANY SALES PROFESSIONAL OF THE YEAR



DANIEL PEREZ
D.R. Horton



CHRISTOPHER LEIMBACH
(INNOVATIVE SALES)
Veev by Lennar

FINALISTS

Duc Hoang
D.R. Horton

Brandon Barrett
Lennar Homes

ONLINE SALES PROFESSIONAL OF THE YEAR



PAMELA BEATO-SOKUKAWA
Lennar Homes

SALES TEAM OF THE YEAR



JEFF JOHNSRUDE & JILL POMYKALA

Trumark Homes

FINALISTS

Robert Harrison & Jonathan Aguilar Castellanos
D.R. Horton

MARKETING PROFESSIONAL OR TEAM OF THE YEAR



NINA CULLEN
PulteGroup



INGRID GENTHNER
PulteGroup

FINALISTS

Veev Marketing Team
Veev by Lennar

Stephanie Estrellado, Alyssa Jenkins, & Pamela Darling
Trumark Homes

CUSTOMER SERVICE PROFESSIONAL OF THE YEAR



DAVOR SKARIC

Veev by Lennar

FINALISTS

Raquel Pardo
D.R. Horton

Ashley Dawn Bizicki
D.R. Horton

Paul Rodriguez
Trumark Homes

Spencer Cooper
Lennar Homes

MORTGAGE PROFESSIONAL OF THE YEAR



ANNIE VERBER
Lennar Mortgage

FINALISTS

Dee Dee Pho
DHI Mortgage

PURCHASING/OPTIONS PROFESSIONAL OR TEAM OF THE YEAR



ERINN MCGUIRE

Trumark Homes

FINALISTS

Jennifer Morse
Veev by Lennar

Laura Nation, Chris Chiu, & Christine Love
Shea Homes

SUPERINTENDENT/CONSTRUCTION PROFESSIONAL OF THE YEAR



EDUARDO GUERRERO
D.R. Horton



SEAN WEBBER
(INNOVATION)
Veev by Lennar

FINALISTS

Justin Garrett Botelho
D.R. Horton

Alex Madrigal
Trumark Homes

**DESIGN STUDIO
PROFESSIONAL OF THE YEAR**



YOLANDA ARECHIGA

HomeSite Services

COMMUNITY DEVELOPMENT PROFESSIONAL OF THE YEAR



ANNA SIPES

Trumark Homes

FINALISTS

Jacqueline Chan
D.R. Horton

Jeff Davies
Trumark Homes

BUILDER TEAM MEMBER MVP



DANIEL TRAN

Lennar Homes

SALES VOLUME AWARD



CEDRIN ABELLO
Lennar Homes
\$15,163,022



ANDREA AMAYA
Trumark Homes
\$11,583,747



CHRISTINE AYROSO
D.R. Horton
\$24,577,395



HARVEERPAL BAINS
D.R. Horton
\$21,435,595



EMILY BARRACLOUGH
Lennar Homes
\$47,003,184



BRANDON BARRETT
Lennar Homes
\$41,558,969



BRIAN BREER
PulteGroup
\$25,587,291



ADRIENNE BUNKER
PulteGroup
\$11,954,646



TERRY CAMARENA
Trumark Homes
\$8,731,278

SALES VOLUME AWARD



**JONATHAN AGUILAR
 CASTELLANOS**
 D.R. Horton
 \$21,272,430



KEN CHEUNG
 Lennar Homes
 \$41,558,969



WAI SEE CHEUNG
 Trumark Homes
 \$7,621,433



MELISSA CORONADO
 D.R. Horton
 \$24,567,960



LORI CRAWLEY
 Lennar Homes
 \$21,711,313



RACHEL CRUZ
 D.R. Horton
 \$24,219,890



KEVIN CUMMINS
 Lennar Homes
 \$29,271,351



ART DELAGE
 Trumark Homes
 \$6,297,114



MATT EDWARDS
 Lennar Homes
 \$25,589,414

SALES VOLUME AWARD



ADRIENNE ETIENNE
Lennar Homes
\$25,589,414



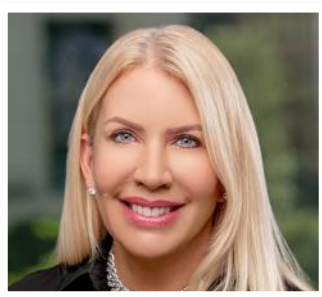
CARLO EUGENIO
Lennar Homes
\$29,564,232



LISA GALVEZ
PulteGroup
\$13,196,432



MARIO GATAN
PulteGroup
\$13,248,413



ELLEN GIAGIARI
Trumark Homes
\$53,916,731



BECKIE GLEESON
Trumark Homes
\$12,564,801



MARY GUERTIN
PulteGroup
\$56,900,655



SHELBY HARRIS
Lennar Homes
\$29,950,177



ROBERT HARRISON
D.R. Horton
\$31,944,060

SALES VOLUME AWARD



**SINH SINH
HENDERSON**
PulteGroup
\$41,167,148



NICKI HEYMAN
Trumark Homes
\$9,244,875



SUSIE HUI
PulteGroup
\$26,315,130



DUC HOANG
D.R. Horton
\$40,465,451



JEFF JOHNSRUDE
Trumark Homes
\$22,414,634



LINDA LE
Lennar Homes
\$28,116,792



JELANI LEWIS
PulteGroup
\$7,838,644



LAURA LUNG
PulteGroup
\$20,169,187



CELESTE MAGRI
PulteGroup
\$15,601,381

SALES VOLUME AWARD



JILLIAN MEDEIROS
PulteGroup
\$22,714,770



KRISTY MILLION
Trumark Homes
\$14,531,508



JOLENE MORROW
Trumark Homes
\$20,315,596



KRISTEN MULL
Trumark Homes
\$31,577,559



PAM MUNOZ
D.R. Horton
\$23,914,632



DANIEL PEREZ
D.R. Horton
\$39,263,245



JOSHUA PERRY
Lennar Homes
\$30,457,860



JIM PIEPER
PulteGroup
\$13,283,789



MARINA PLUTE
PulteGroup
\$18,762,244

SALES VOLUME AWARD



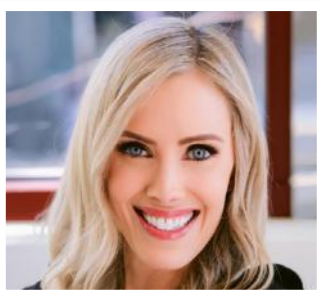
JILL POMYKALA
 Trumark Homes
 \$20,315,596



ANGIE ROHR
 Lennar Homes
 \$32,877,422



MARJORIE SAFAIE
 Trumark Homes
 \$23,114,313



DEBBIE SIBLEY
 Trumark Homes
 \$28,963,674



DEANNE STUTZMAN
 Lennar Homes
 \$31,889,154



TRINH TRAN
 PulteGroup
 \$35,581,657



DENNIS TRUMP
 PulteGroup
 \$46,134,985



VEEV SALES
 Lennar Homes
 \$59,888,828



JILL WALLACE
 PulteGroup
 \$5,333,214

SALES VOLUME AWARD



LISA WEISS
Lennar Homes
\$27,085,272



AMY WILCOX
Trumark Homes
\$9,795,511



STEPHEN WHITLOCK
PulteGroup
\$45,386,024



COREY WU
Trumark Homes
\$7,621,433



WANG XIONG
Lennar Homes
\$29,910,579



JUSTUS YEUNG
Lennar Homes
\$29,651,892

Golden Ambitions.
Golden Achievements.
Golden Night.



Designed by Gunn Jerkens