



WORLD AFFAIRS
COUNCIL OF
PHILADELPHIA
& PARTNERS

APRIL 23 - MAY 1, 2025

with optional
Amazon Post-Tour

MYSTERIES OF PERU AND MACHU PICCHU

Orbridge



WORLD AFFAIRS
COUNCIL OF
PHILADELPHIA
& PARTNERS

Dear World Affairs Council Travelers,

From the Sacred Valley of the Inca, to the magical heights of Machu Picchu, to the natural wonders of the Ballestas Islands, join us as we uncover the culturally rich region of the Peruvian Andes. This extraordinary journey reveals Peru's enduring charm, centuries-old traditions and enigmatic mysteries.

Take flight over the Nazca Lines during an exciting optional excursion—a unique opportunity to get an aerial view of the mysterious soil carvings, which are a designated UNESCO World Heritage Site.


Savor authentic flavors, textures and aromas of Peruvian cuisine, from the richness of lomo saltado to perfectly crafted ceviche, every bite tells a story.

Interact with the rich and complex history of the Inca period at the archaeological sanctuary of Sacsayhuaman, and gain a deeper understanding of those who worshiped there.

We share this program with other educational study groups. Availability is limited and with significant savings of more than \$1,000 per couple, we anticipate this program will fill quickly, so be certain to reserve your spot today! Family and friends interested? We'll send them a brochure or have them call us! To reserve, call 1-800-942-5004, or locally 215-561-4700 ext. 209 or ext. 231, email us at travel@wacphila.org, visit us online at www.wacphila.org, or return this reservation form.

Best regards,

Andrew Haught
Director of Travel
World Affairs Council of Philadelphia

 *Orbridge takes seriously the responsibility to minimize our global environmental impact. Each year we plant 100,000 trees in U.S. State Forests with afforestation needs as an ongoing initiative among our evolving sustainability efforts. Learn more at orbridge.com/going-green.*

Mysteries of Peru | Itinerary and Highlights (subject to change)

Day 1: EN ROUTE FROM U.S. | ARRIVE IN LIMA, PERU Upon arrival to Lima's Jorge Chavez International Airport an Orbridge representative will be waiting to assist with your transfer to the hotel. Later witness the enchanting Magic Water Circuit at Parque de la Reserva, an expansive park within the city. This evening gather with fellow travel companions for a welcome dinner.
Overnight: Hotel Estelar Miraflores (D)

Day 2: LIMA Today enjoy a guided city tour and market visit plus a cooking class to learn the tips and techniques of crafting traditional Peruvian dishes and the refreshing Pisco sour cocktail. Have a mid-day lunch featuring traditional Peruvian cuisine at a local restaurant. Later explore the extensive collection of ceramics, fabrics and precious metals at the Larco Museum.
Overnight: Hotel Estelar Miraflores (B,L)

Day 3: LIMA | FLIGHT TO CUSCO | SACRED VALLEY After breakfast return to the airport for the brief flight to Cusco. Arriving at Alejandro Velasco Astete International Airport, board the group transfer to your hotel. Later today visit the Yucay Museum of Living Culture for a guided visit. The evening is at leisure.
Overnight: Sonesta Posada Yucay (B,L)

Day 4: SACRED VALLEY | MACHU PICCHU | SACRED VALLEY | CUSCO Early this morning depart for the Ollantaytambo train station to board the Vistadome train to Aguas Calientes. The journey through breathtaking landscapes is a treat in itself, with panoramic windows framing nature's majesty. Disembark the train for a bus ride up the mountain. Lunch will be at the Machu Picchu Sanctuary Lodge followed by guided exploration of the ruins. In the afternoon return to the Vistadome train for the return to Cusco.
Overnight: Aranwa Cusco (B,L)

Day 5: CUSCO Set out on a city tour to discover the archaeological sites of Sacsayhuaman and Qorikancha (Temple of the Sun), followed by a visit to colorful San Pedro market. Lunch is at Villa Tipon featuring a traditional Pachamama ceremony (offering to the Earth) and a live music performance. Afterward visit a local artisan chocolate shop for an engaging tour and tasting.
Overnight: Aranwa Cusco (B,L)

Day 6: CUSCO | FLIGHT TO LIMA | PARACAS Following breakfast and the return flight to Lima, take the approximate 3.5-hour drive to the coastal town of Paracas. Check into your hotel and unwind before rejoining the group for a presentation on the Nazca Lines and pre-Incan history and cultures. The remainder of the day and evening are at leisure to enjoy the luxurious hotel amenities.
Overnight: La Hacienda Bahía Paracas (B,L)

Day 7: PARACAS | ICA | PARACAS This morning includes an optional excursion to fly over the Nazca Lines during a 90-minute aerial tour. Later, set off towards Ica for an exciting open-air dune buggy adventure through the sand dunes, including a visit to a winery followed by a beautiful sunset picnic dinner.
Overnight: La Hacienda Bahía Paracas (B,D)

Day 8: PARACAS | BALLESTAS ISLANDS Depart for a morning of discovery during a relaxing boat ride around the Ballestas Islands, and see the Paracas Candleabra. The remainder of the afternoon and evening are at leisure at the property.
Overnight: La Hacienda Bahía Paracas (B)

Day 9: PARACAS | LIMA | DEPART FOR U.S. After breakfast depart for Lima where a group hospitality room will be provided at the hotel before transferring to the airport for departing flights home this evening. Guests continuing on the post-tour will fly from Lima to Iquitos.
Hospitality Room: Wyndham Costa del Sol (B)
(B = Breakfast, L = Lunch, D = Dinner)





What's Included

- 8 nights premium accommodations
- 8 breakfasts, 5 lunches, and 2 dinners (including a special welcome dinner)
- All small-group excursions as noted in the 9-day itinerary, including entrance fees
- Full guiding services of an Orbridge Travel Director and expert local guides
- Private motor coach transportation
- Luggage portage
- Gratuities to Orbridge Travel Director, local guides, and drivers
- Airport transfers for guests arriving and departing during the suggested times



Activity Level: Guests should be able to enjoy two hours or more of walking, be sure-footed on cobbled surfaces, and walk up and down stairs without assistance. Historic city centers are usually more accessible by foot than vehicle. Due to the structure of some buildings, facilities for the disabled may be limited.

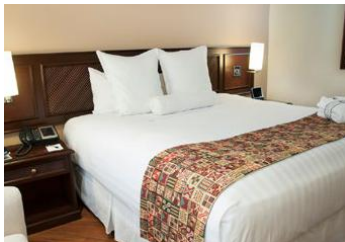
Your Expedition Leader:

Enriched from the wealth of expertise provided by your Orbridge Expedition Leader, you'll bring home a deeper understanding of the flora, fauna, natural history, cultural narrative, and diverse landscapes of Peru.

Accommodations *(subject to change)*

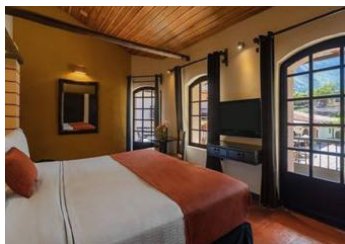
HOTEL ESTELAR MIRAFLORES – LIMA

Hotel Estelar is located in the heart of the upscale and suburban Miraflores District known for its many galleries, as well as cultural and historical venues. Enjoy contemporary and spacious rooms, a rooftop pool with terrace, a large fitness center and panoramic city views from Estelar's restaurant Piso 21.



SONESTA POSADAS DEL INCA – YUCAY

Located in the heart of the Sacred Valley of the Incas, this hotel is a former 18th-century colonial-style monastery surrounded by beautiful gardens. Rooms offer the comfort of modern amenities and the charm of rustic decorative features.



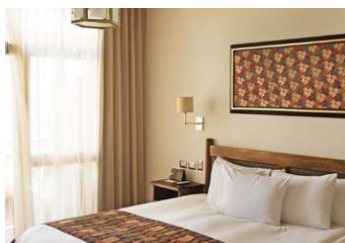
ARANWA CUSCO BOUTIQUE HOTEL

This luxurious property is situated near Cusco's main square, only minutes away from colonial buildings, restaurants and shops. Built in a 16th-century mansion, its decor, sculptures, and carvings accentuate the colonial period. Each room is well-appointed and elegantly decorated with traditional furniture and frescoes.



LA HACIENDA BAHÍA PARACAS

This coastal property blends details of the surrounding atmosphere with luxurious accommodations. After an exciting day of exploration, escape to the spacious outdoor swimming pool or the fitness room.



Optional Post-Tour Amazon

Uncover the wonders of the Amazon alongside expert guides who share their profound knowledge of the flora, fauna, and indigenous cultures that call this region home.

Day 9: IQUITOS | AMAZON Upon arriving to Francisco Secada Vignetta International Airport a guide will assist with your transfer to the boat that brings you to Ceiba Tops Lodge. Before dinner take time to settle into your accommodations and perhaps explore the property's elaborate gardens or relax in the lounge.
Overnight: Ceiba Tops Lodge (L,D)

Day 10: AMAZON After breakfast join a skilled guide on a birding expedition to spot for the wildly diverse avian species in the area. Embrace the beauty of this vibrant forest as you listen to the melodious symphony of its inhabitants. Later venture into the heart of the rainforest on the Bushmaster Trail, a hiking experience that takes you through various ecosystems. A visit to a Yagua Indian Village highlights the living traditions of indigenous communities. End the day's adventures with a scenic trail walk before returning to the lodge for dinner.
Overnight: Ceiba Tops Lodge (B,L,D)

Day 11: AMAZON Embark upon a scenic boat ride on the Amazon River to reach the Explornapo Lodge amidst the Sucusari Reserve. Take an exhilarating canopy walk through the forest. Afterward, explore the fascinating local flora and their traditional uses during an ethnobotanical garden tour.
Overnight: Ceiba Tops Lodge (B,L,D)

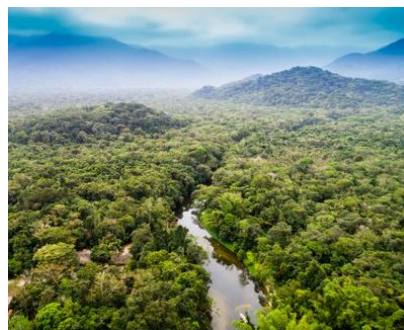
Day 12: AMAZON | IQUITOS | LIMA Set out for a final hike along the river followed by a sugar cane rum factory tour. Return to Iquitos by boat, then transfer to the airport for the return flight to Lima.
Overnight: Wyndham Costa del Sol Airport (B,L)

Day 13: LIMA | DEPART FOR U.S. After breakfast guests departing during the suggested times take the complimentary transfer to the airport for flights home. (B)

What's Included

- 3 nights accommodations at Ceiba Tops Lodge (or similar)
- 1 night at Wyndham Costa del Sol Airport (or similar)
- 4 breakfasts, 4 lunches, and 3 dinners
- All guided excursions and activities listed in the 5-day itinerary, including entrance fees
- Luggage portorage
- Gratuities to local guide, driver, and porters
- Airport transfers for guests departing during the suggested times

Daily activities on this post-tour will be determined by weather, opportunities to view wildlife, and other various elements that make up the incredibly diverse landscape. This itinerary is a general listing of activities and excursions that may happen during any part of the tour.



MYSTERIES OF PERU AND MACHU PICCHU

APRIL 23 - MAY 1, 2025

Amazon Post-Tour: May 1-5, 2025

To Reserve:

Phone: Call **1-800-942-5004**, or locally

215-561-4700 ext. 209 or ext. 231,

email us at travel@wacphila.org,

visit us online at

www.wacphila.org/travel-mysteries-of-peru

or return this reservation form.

To reserve this tour using the reservation form,

please send checks payable to:

Orbridge, LLC

Mail to: Orbridge

P.O. Box 1376

Poulsbo, WA 98370

Category	Standard Rate	Special Rate*
Double	\$5,999	\$5,495
Double Deluxe	\$6,399	\$5,895
Single	\$7,499	\$6,995
Single Deluxe	\$7,899	\$7,395

Deluxe package includes room upgrades at Hotel Estelar Miraflores, Sonesta Posada del Inca, and Aranwa Cusco Boutique Hotel and La Hacienda Bahia Paracas. Availability limited.

Amazon Post-Tour*		
Category	Standard Rate	Special Rate*
Double	\$2,699	\$2,495
Double Deluxe	\$2,999	\$2,795
Single	\$3,899	\$3,695
Single Deluxe	\$4,199	\$3,995

Deluxe package includes room upgrades at Ceiba Tops Lodge Availability limited.

Rates are per person based on double occupancy except where noted as Single, in U.S. dollars.

GUEST INFORMATION:

Guest #1 Name (Title/Salutation): _____

Email: _____ Birth Date: _____

I am a member of: _____ Council

Home Phone: _____ Alt. Phone: _____

Address: _____

City: _____ State: _____ Zip: _____

Guest #2 Name (Title/Salutation): _____

Email: _____ Birth Date: _____

Home Phone: _____ Alt. Phone: _____

DEPOSIT PAYMENT:

Check enclosed made payable to Orbridge LLC

For deposits to be paid using a credit card, a member from Orbridge's Guest Services team will contact you to collect your card information.

CATEGORY SELECTION & DEPOSIT:

Category (first choice): Double Double Deluxe Single Single Deluxe

Category (second choice): Double Double Deluxe Single Single Deluxe

_____ guests joining program (\$850/person) +

_____ guests joining post-tour (\$500/person) = **TOTAL DEPOSIT: \$** _____

OPTIONAL EXCURSION (added to your final invoice):

_____ guests joining Nazca Lines Overflight (\$350/person)

Post-Tour Category (choose one): Double Double Deluxe Single Single Deluxe

I/we have read, understand, and agree to the full Terms & Conditions at terms.orbridge.com; and I/we agree that Orbridge, LLC is authorized to charge my credit card above and/or take my/our deposit for this program.

Signature: _____ Date: _____

Call 1-800-942-5004 ext. 209 or 231 | Email: travel@wacphila.org | Visit: www.wacphila.org/travel-mysteries-of-peru

*Special group rate; limited offer. For the main program, internal roundtrip airfare between Lima and Cusco is included. Airfare otherwise not included. For the post-tour, roundtrip airfare between Lima and Iquitos is included. Airfare otherwise not included. Single availability limited. **A complement to the educational component of this journey, Expedition Libraries are curated collections of useful resources and background reading tailored to this program. Place your deposit on or before the specified date, and one Expedition Library per household will be sent after receipt of final payment. Libraries may be purchased; please call for details.



World Affairs Council Travelers
World Affairs Council of Philadelphia
1617 John F. Kennedy Blvd., Suite 1660
Philadelphia, PA 19103

MYSTERIES OF PERU AND MACHU PICCHU

APRIL 23 - MAY 1, 2025

Special Rate:

Save more than **\$1,000** per couple

30-DAY REFUND GUARANTEE

World Affairs Council of Philadelphia & Cooperating Councils
Akron • Alabama • Alaska • Albany • Arizona • Atlanta
• Baltimore • Boston • Buffalo • California Central
Coast • Charleston • Charlotte • Central Illinois
• Chicago • Greater Cincinnati • Cleveland • Colorado
Foothills • Colorado Springs • Columbia • Columbus
• Connecticut • Dallas/Fort Worth • Denver • Detroit
• Florida Palm Beaches • Greater Hampton Roads
• Greater Reading • Greater Richmond • Greater Valley
Forge • Harrisburg • Hilton Head • Houston
• Inland Southern California • Jacksonville • Kansas
City • Kentucky/S.Indiana • Las Vegas • Los Angeles
• Maine • Mid-Hudson Valley • Milwaukee • Minnesota
• Montana • Monterey Bay • Naples • New Hampshire
• New Orleans • Northern California • Orange County
• Oregon • Peoria • Pittsburgh • Raleigh • Rhode
Island • San Antonio • San Diego • Santa Fe
• Savannah • Seattle • Sonoma County • South Dakota
• South Texas • St. Louis • Stamford • Tacoma
• Tennessee • Utah • Vermont • Washington, DC
• Western Michigan • Western North Carolina

www.wacphila.org/travel
1-800-942-5004, ext. 209 or 231 • travel@wacphila.org

FREE EXPEDITION LIBRARY
AN EXCLUSIVE EARLY
RESERVATION BONUS

Reserve by
July 12, 2024**

PRSR STD
U.S. POSTAGE
PAID
PERMIT NO. 825
SAN DIEGO, CA