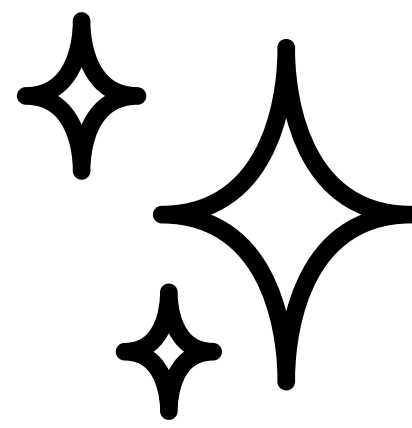


# A GUIDE TO THE PERFECT SENSORY CORNER



# create the sensory corner of your dreams



The school and classroom fill our heads with a wealth of sensory information. Processing this information can be a challenge and impact the behaviour of your students. Offering them a sensory space is a simple solution for improving their socio-emotional behaviour and is beneficial for their cognitive development.

## What is a sensory corner?

A sensory corner is a designated area inside your classroom. It allows the child to take refuge there with complete independence. Withdrawing into this space will help them regulate their emotions and energy level in order to be more available to learn and interact with others.

The use of the sensory corner can be combined with a class routine or used accordingly to the sensory needs of each student.

## The benefits of a sensory corner

- › Improves mood management by paying particular attention to the emotions the student is feeling
- › Increases the sense of security
- › Helps reduce restlessness and apathy (lack of energy)
- › Improves attention and quality of concentration



Olfactory



Sight



Auditory



Touch



Oral



Posture



Vestibular

The vestibular system allows us to know our position in space and to orient the different areas of our body. It allows us to recognize the direction and speed of movement. It plays an important role in maintaining balance.



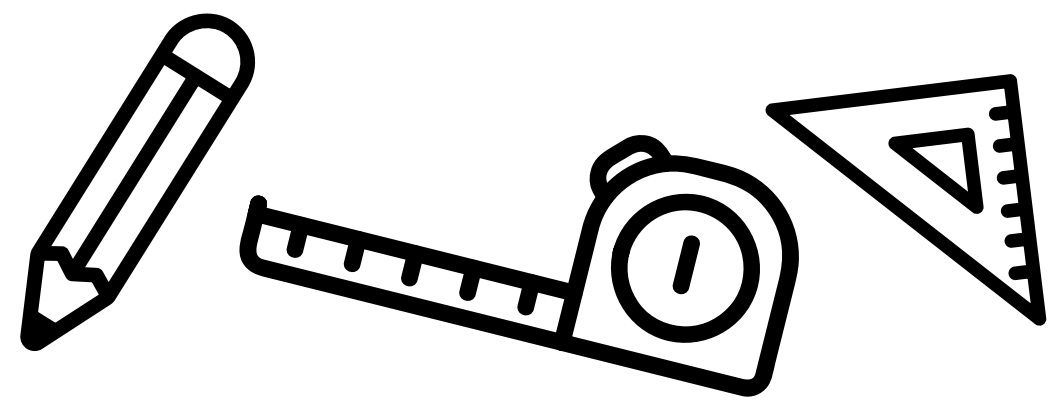
Proprioceptive

The proprioceptive system allows us to perceive information that comes from our muscles and joints. It plays a major role in the development of body awareness and helps define the boundary of our body. In fact, proprioception helps us to know our body well and to use it in an appropriate way in relation to the environment.



Throughout this guide, look for this icon. It will give you access to new information, tips, and tricks that will allow you to use our products to their full potential.

# define your space

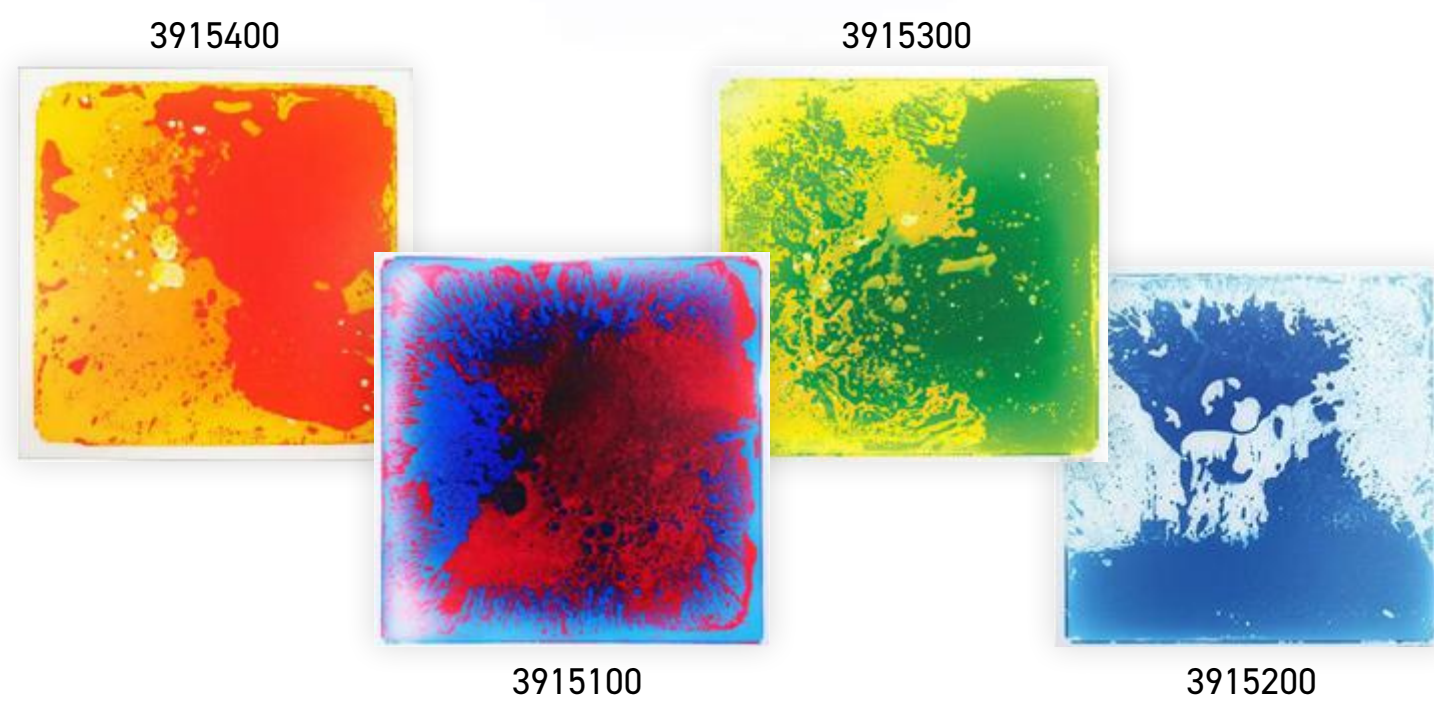


Not all teachers will have the same availability of space; the sensory corner can be very small since it generally stays in a static place. Create your own warm and welcoming cocoon by revamping your reading nook or setting up a whole new space. This area, isolated from the rest of the class, must be large enough to accommodate at least one seat. Establish your space with a storage unit that will allow you to keep your sensory tools in one place. Your students will be able to select their favourite tools.



**Fatboy Collection**  starting at \$138.<sup>95</sup>

Sitting, reclining or lying down, Fatboy cushions can be placed the way you want. They are made up of beads that will create a soothing pressure on your body. Our collection is available in several sizes, textures and colours that blend perfectly with the decor of your sensory space.



**Liquid Tiles**  +  +  +  starting at \$64.<sup>95</sup>

Liquid tiles are the perfect tool to help you define your space. With them, your students will associate the tiles with quiet times. The liquid will move according to the pressure exerted by your feet or hands - wait and admire the mixture of colours that are revealed. Also use this versatile tool to facilitate transition periods and a return to calm.



**Sensory Tent**  starting at \$229.<sup>95</sup>

The sensory tent blocks all outside light, providing a safe, stimulation-free environment for children to calm down. Include it in your sensory space so that everyone can refocus and regulate their emotions when they need it most.

 **This dark tent is ideal for exploring different sensory tools that light up or glow in the dark.**





Sand timers with specific times are a great alternative to regular timers.

starting at \$21,<sup>95</sup>



0762-KIT



4078300



4078200



4078100

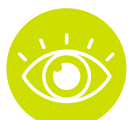


3064000



2519000

### Time Timer

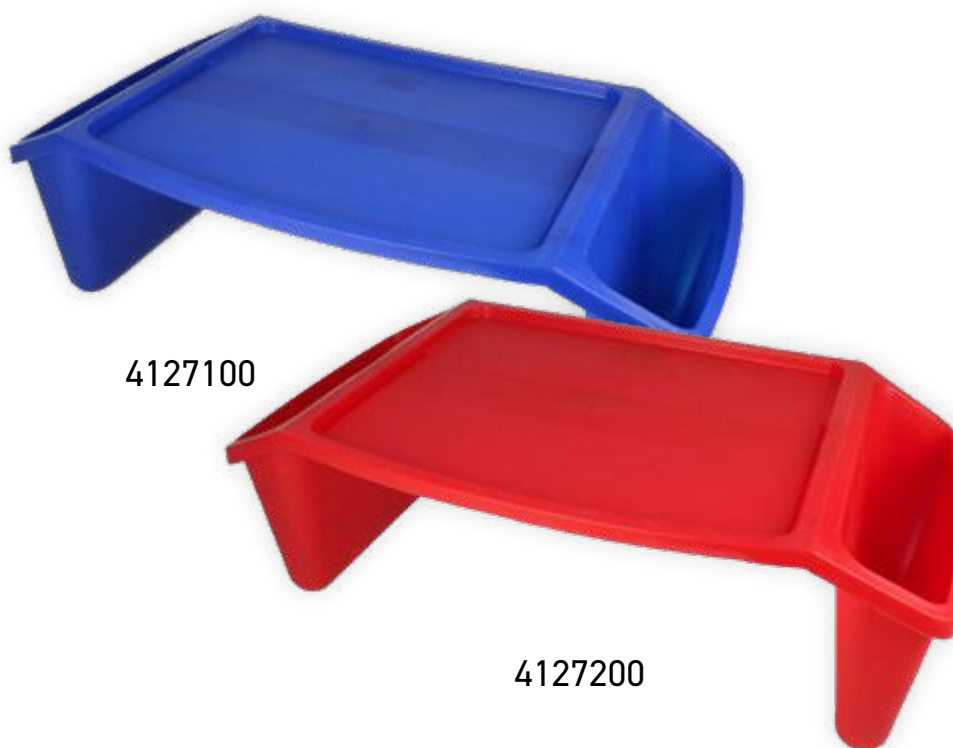


starting at \$37,<sup>95</sup>

Time can fly by sometimes! Have a timer so that your students can easily visualize the time allocated to the sensory corner. We suggest that these very precious moments be at least 15 minutes long to fully enjoy all of the benefits. The hardest part will probably be choosing your favourite model from all the options available to you!



3181100



4127100

4127200

### Ray-Lax Chair



starting at \$48,<sup>95</sup>

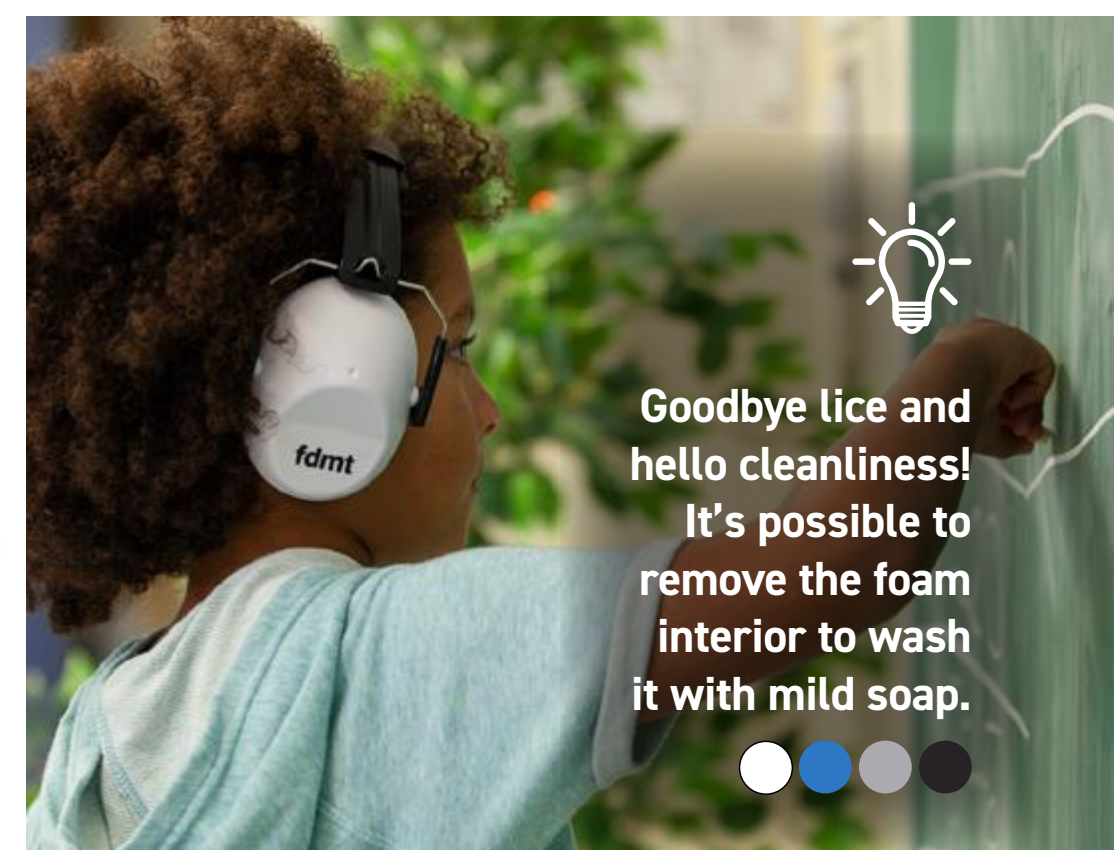
Sitting on the ground allows a break from distractions in order to refocus more quickly. Sit in the classic way; turn the chair sideways to sit in the frame - this position will allow you to swing, or turn the seat horizontally and opt for the lying position.

### Portable Work Surface



\$22,<sup>95</sup>

This stackable work surface is perfect for using hands-on tools without making a mess. Structure the sensory time by filling the two containers with different tools.



Goodbye lice and hello cleanliness! It's possible to remove the foam interior to wash it with mild soap.



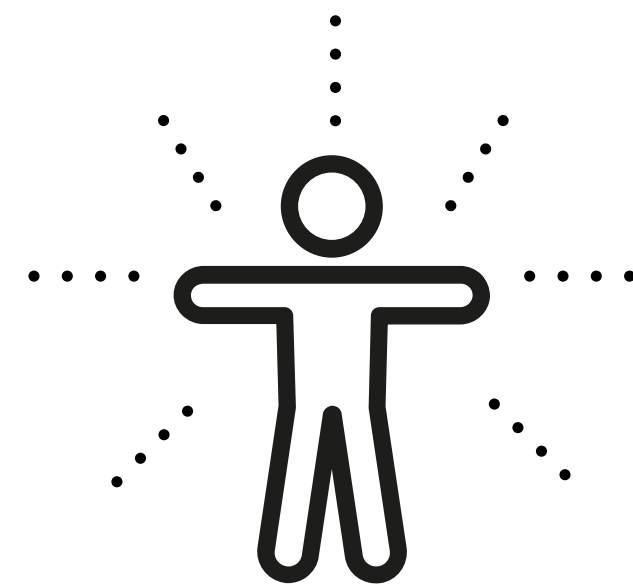
### fdmt Earmuffs



4063500 \$38,<sup>95</sup>

These earmuffs are known to lessen loud and harmful noises. They will allow your students to take full advantage of their sensory break. If your space is not well isolated from the rest of the class, earmuffs will be essential.

# meet your students' sensory needs



Once the space is chosen, then comes the most exciting part: filling it! Opt for a variety of products that together will stimulate all the senses. Once each of the senses has been represented, it will be your students' turn to choose the products they prefer and identify when they like to use them. Once the sensory tools are known, they'll be able to take advantage of this sensory break in complete autonomy. Let your sensory corner evolve over time and according to the children's needs.



## Sensory mazes



\$4.95

This visual tool that can be manipulated helps children learn about the action-reaction principle. The sensory hourglass is a great addition to your sensory corner. It helps children to calm down and return to calm in complete peace of mind.

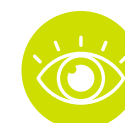


**Shake it!** Create a storm inside your sensory maze and watch it calm down along with your emotions.



4241000

## Sensory Ooze Rectangles



\$ 16.95

Turn this sensory hourglass filled with a thick, colourful liquid and watch it slowly flow down. It's a fascinating demonstration of the passage of time.

## Sensory Mood Cube



2838000  
starting at \$234.95

This luminous cube will create a warm, enveloping and relaxing atmosphere. It lights up in a multitude of colours, changing the atmosphere with a click. This cube-shaped visual experience can also be used as a seat.



**Bubble Tube Lamp with Beads**

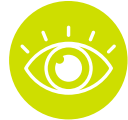


4248000  
\$209.<sup>95</sup>

The bubble tube lamp is a happy mix between sparkling movements and the relaxing effect of a mood lamp. Watch the different coloured beads sway in the bubbles. The lights emit a brilliant, long-lasting colour.



**Bubble Wall**



4219000  
\$649.<sup>95</sup>

Observe the movement of the floating bubbles and the variation of light for a visual stimulation that will help the child relax and refocus on the rhythm of the currents.



**Mini Artificial Aquarium**



4201000  
\$42.<sup>95</sup>

This mini aquarium will make you feel like you've brought the tropics into the comfort of your sensory corner. The colourful light that emerges along with the oceanic background will help relax and regulate emotions.



**Fiber Optic Light Source With 100 Strands**



4208000  
\$394.<sup>95</sup>

Select the calming mode to create a soothing atmosphere that promotes relaxation, all thanks to the wide range of colours that will take hold of the fibers. The ability to swing the light strands back and forth will fascinate young and older.



4153000

4155000

4151000

**Glitter Mood, Wax Mood and Tornado Lamp**



starting at \$32.<sup>95</sup>

Enter this luminous universe where each lamp provides an enveloping visual effect. Each more captivating than the next, your students will return to calm by paying attention to the different light effects. Explore our many designs for a variety of visual stimulation; up and down movements, left and right, faster or slower.



For optimal stimulation, combine two different visual effects. A good example would be the Wax Mood lamp and the Tornado lamp, which offer two opposing movements.



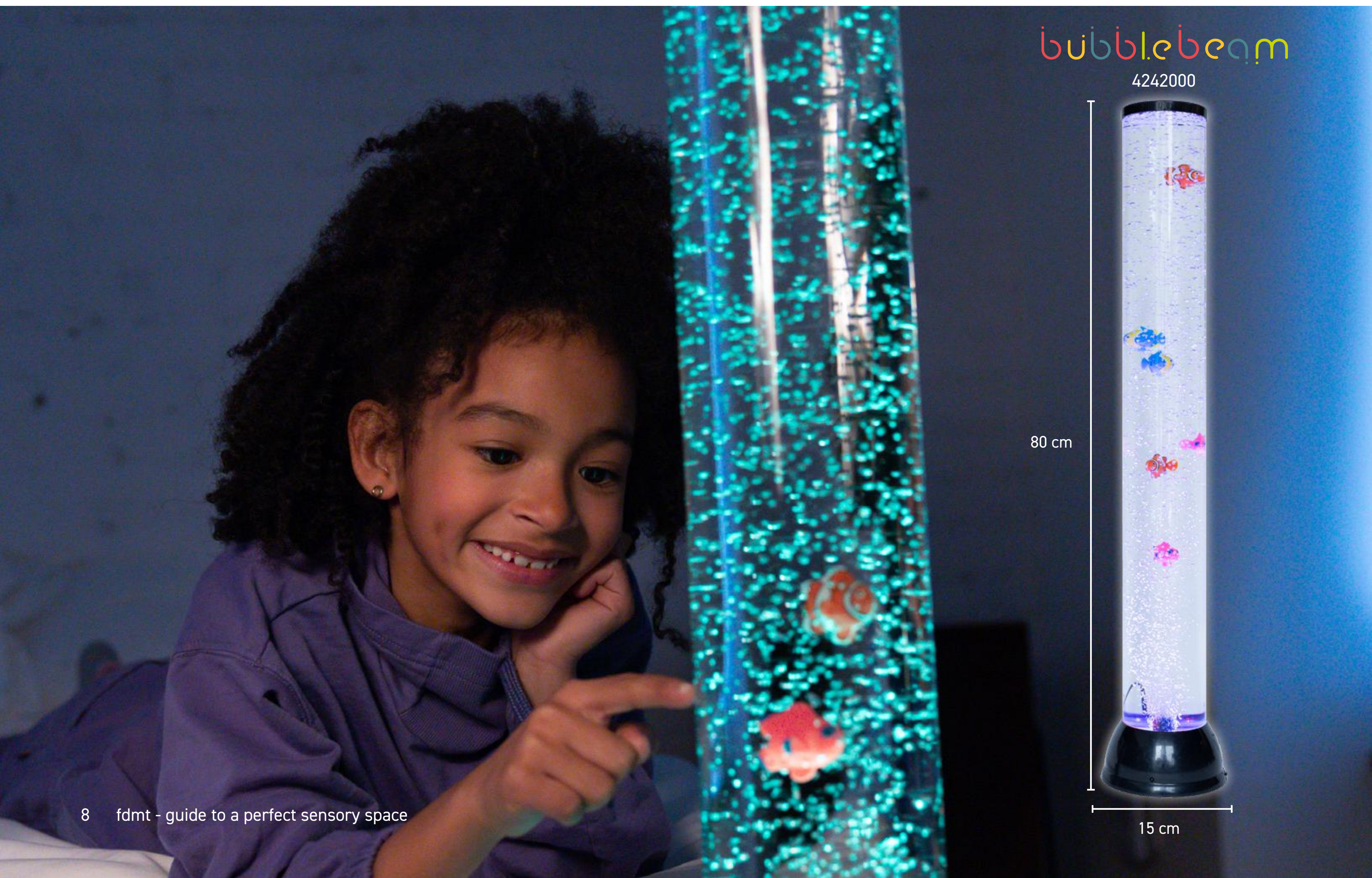
# our new products ✨



## BUBBLEBLOOM and BUBBLEBEAM - Bubble Tubes

starting at  
\$47.95

The variation in colours, the moving fish and the gentle hum of the pump make this bubble tube the perfect sensory product to create an underwater atmosphere in any location. It will be the sensory tool of choice to create a calm and serene atmosphere so that the relaxation and return to calm periods are most soothing.



**JELLYZEN - Oval jellyfish lamp**



\$74.95

Discover the fascinating phenomenon of jellyfish that move majestically in their oval-shaped tanks. You will have access to a privileged view of the ocean floor at your fingertips. The gentle changing light will help you relax and gradually return to calm.



**WAVEWAND - Light Tube**



\$64.95

This DEL light tube offers nothing short than 16 different colour modes to create a unique, soothing atmosphere every time. This effervescent light will stimulate your child's senses, helping him to calm down more quickly, relax or fall asleep. Include it in your sensory space by mounting it on the wall or placing it on the floor on its base - either way, the light show will be impressive.



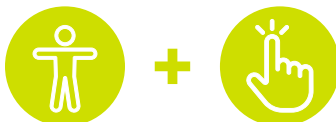


4042000

4042200

4042300

**Weighted Blanket**



starting at \$129.<sup>95</sup>

The weighted blanket provides proprioceptive sensory stimulation. Its evenly distributed weight exerts deep pressure that soothes excess energy, calms and helps relaxation. Fold it in half to provide greater pressure for older children.



It'll spend all day helping everyone in your class. Don't worry, just machine wash it.



4240200



4240100



4240000

**Cuddle Ball**



\$34.<sup>95</sup>

The Cuddle Ball provides a sense of calm and security. It is particularly useful for calming people with anxiety, stress, hyperactivity or other sensory needs. Its soft texture will make you want to slip your hands into it, cuddle it and hold it close to you. Inserting your hands into the mesh of the ball exerts deep pressure on the sensory system to increase the sense of comfort.

**Weighted Lap Pad**



\$39.<sup>95</sup>

The weighted cushion provides proprioceptive sensory stimulation to comfort the child. Its simple use will help the child accomplish tasks that require attention and concentration. As well as helping to regulate emotions when the child feels overwhelmed, the cushion gives him a break to be more efficient later on.



4265000



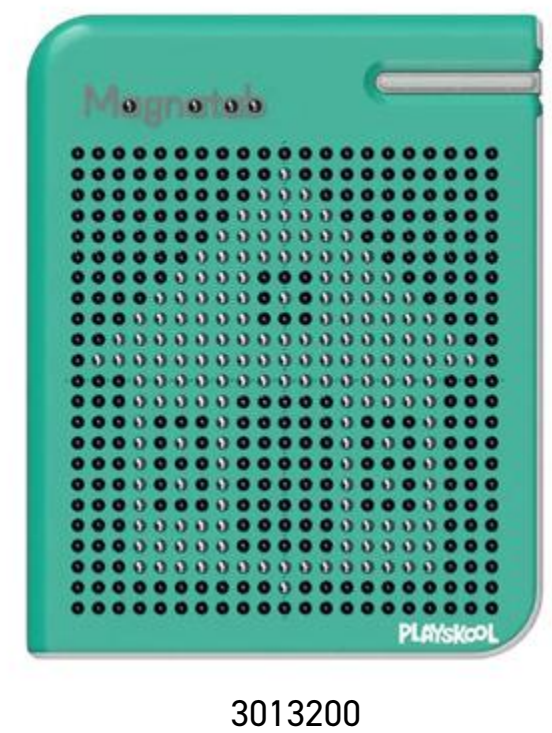
**Floof Bucket**  +  \$29.95

This malleable clay is soft and smells divine. You'll feel like you've picked up a piece of cloud! With a little creativity you'll be relaxed, working wonders using only your two hands.



**Scensory Putty**  +  \$11.95

Familiarize yourself with the different smells of our coloured, scented putty. During manipulation, you'll touch the many particles that it's made up of and gives it a unique texture. Let it expand and smell its captivating scent.



**Free Play Magnatab**  +  \$36.95

Combine creativity and auditory stimulation. Let your imagination run wild and pay attention to the sound produced each time the magnetic pen touches the board. Erase the board with your fingertips and make another masterpiece.



**Stretchy Coral and Seahorse Fidget**  \$8.95

Pass these seahorses through this pretty coral, a perfect anti-stress experience. This textured fidget lets you work on your fine motor skills while having fun.



**Colour Morph Molecule Stress Ball**  \$10.95

This soft, colour-changing metamorphosis ball is a sensory explosion in itself. Once squeezed, it reveals its pearls, which add a unique colour and fascinating texture.



**Squishy Morph Stress Ball**  \$10.95

The metamorphosis ball lives up to its name by transforming into different shapes. Children can have fun flattening, stretching and twisting it.



**Playfoam Pluffle Twist  
Glow-in-the-Dark**

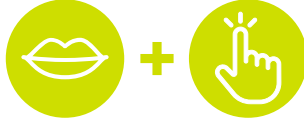


\$19.95

This textured foam is the perfect addition to your sensory bins so children can work on their fine motor skills. A unique accessory for sensory activities, the ultra-soft texture also provides a feeling of calm and relaxation.



**Chewelry**



These tools can become a chewer's best friend! One thing is certain - they allow a child to regain a sense of calm and self-regulate wonderfully during more stressful periods. Available in several formats - in particular, attached to a necklace or as a decoration at the end of a pencil.

**Did you know?**  
Some chews are also a very nice manipulation tool thanks to their different textures.

starting at \$4.95



4073000

**Giant Stress Ball**



\$28.95

It has the same purpose as the classic stress balls, but it's in a gigantic format! You can handle it with two hands to release your emotions twice as fast. Discover the different textures: holey, smooth or irregular.



1967

**Fidget Kit**



\$69.95

Starting your sensory corner? We have the perfect set for you! Get started with this hands-on set that gives you nothing less than 13 different sensory objects, all at a low cost.



2704100



0864100



206600



4160000



0861

**Tangle Collection**



starting at \$6.95

Tangles are a great manipulation tool, ideal for calming down. It's possible to turn and detach the pieces that it's made of. Have fun exploring all the models, funny textures, and flamboyant colours.



Put the eggercizer in the microwave or freezer to explore different sensations. 



4266000

**Eggercizer**



starting at \$15.<sup>95</sup>

A stress ball like no other. Its egg shape will fit perfectly into your students' little hands in order to release their emotions.



**Weighted Shoulder Wrap**



+



0873-P  
starting at \$52.<sup>95</sup>

Our heavy cushion soothes with deep pressure and relieves tension in the shoulders and upper back. It's an indispensable tool for restoring calm. It also encourages attention and concentration.



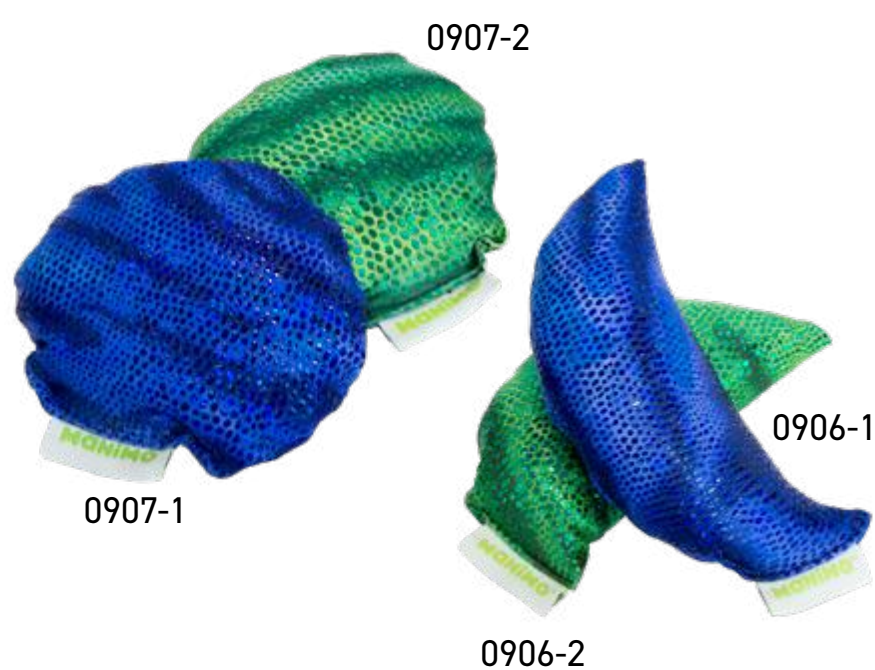
0301000

**REP Putty**



starting at \$10.<sup>95</sup>

Each colour of this malleable putty is associated with a different resistance strength. Have fun hiding small objects in there like marbles, and then releasing them.



**Full and Half Moon Sress Balls**



\$8.<sup>95</sup>

You'll love our manimo balls - it's like a sample of your favourite comforting plush. Made of plastic micro-beads, handling their pleasant texture will soothe you.



**Comfy Peapod**



+



+



Inflate the sensory canoe in two steps. The child will gently sway thanks to the inflated bottom of the boat. The pressure exerted on the body will hasten his return to calm. It also allows a child to properly locate their body in space.

4097200 | \$169.<sup>95</sup>



**fdmt Balance Cushion**



+



+



Since you already use the famous balance cushion, think outside the box and try different positions. For example, put it on the floor in your sensory corner and sit on it. Lean against the wall, place it between your shoulder blades and wobble your shoulders from left to right, or stand on it.

3916000 | \$34.<sup>95</sup>



**manimo, The Weighted Companion**



starting at \$42.<sup>95</sup>

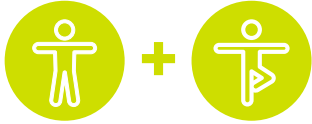
We are all exposed to a multitude of stimuli. Some manage them well, while for others it takes more effort. The manimo will accompany you both during anxiety-provoking situations and in relaxing moments. The weight of manimo soothes, comforts and will allow you to better feel your body in space. This results in a greater ability to concentrate and promotes the regulation of behavior and emotions.

1. turtle - 3011-1 | 2. cat - 3012-2 | 3. dog - 3013-1 | 4. snake - 0222-21 | 5. frog - 0198-2 | 6. lizard - 0185-1 | 7. dolphin - 2033-1-B



0001-G

**Ghosts**



starting at \$41.95

Ghosts help to situate the body in space. In a sensory corner, you can put it on leaving the head outside, which will create the effect of a bubble. Select a manipulation tool and you're done. The bubble effect will allow the child to complete their sensory break by limiting distractions.



**Pedal Exerciser**



3533100  
starting at \$69.95

Pedal for better relaxation! The crankset can be pedaled with the feet as well as the hands. Sit comfortably and let's go! The continuous movement will help with your students' self-regulation.



3527300

**Hexagon Gel Pad**



starting at \$40.95

Place the cushion on your thighs and have fun wiggling the gel inside. Enjoy a two-in-one sensory input: proprioception and touch. It's available in a variety of weights for deeper soothing.



236904

**Vibrating Cushion**



starting at \$47.95

For a guaranteed rest and relaxation session, place the cushion behind your back or even under your feet. Give it a big hug in order to receive all the benefits created from these vibrations.



0010-P

**Deep Pressure Vest**



\$79.95

Once on, the deep pressure vest promotes calm, reduces agitation, and increases focus and concentration. Its comforting embrace gives us the sensation of a big hug.



2715610

2715600

2715530

4715400

2715220

2715310

3735110

**Dynamic Seatings**



starting at \$79.95

Yes, yes! Dynamic seating in a sensory corner. They are perfect for spending excess energy without visually disturbing the class. Swing from left to right thanks to the air movement of the ErgoErgo seat. Or, bounce to your heart's content on one of our Kore stools.



3563400

**Cuddle Swing**



\$279.95

Are you lucky enough to have the space to be able to hang the Nest-Hammock? This is the item that was missing from your sensory corner. In this small tent, the student will be completely isolated. They'll be able to return to calm without being disturbed by the rest of the class' movement.





**SUBSCRIBE TO OUR NEWSLETTER**  
FOR EXCLUSIVITIES AND SURPRISE PROMOTIONS



**fdmt**  
créateur de  
creator of **MANIMO**

**20**  
ANS | YEARS

**YOUR SENSORY PARTNER FOR 20 YEARS.**

[fdmt.ca](http://fdmt.ca)

follow us

