



**THE HUB**  
FAMILY RESOURCE CENTRE

# 2023-2024 ANNUAL REPORT



**Healthy Children, Healthy Families,  
Healthy Communities.**



## Mission

The Hub Family Resource Centre works to strengthen the well-being and resiliency of parents, caregivers, children and families in Wood Buffalo.

## Vision

Healthy children, healthy families, healthy communities.

# TABLE OF CONTENTS

<b>EXECUTIVE DIRECTOR REPORT</b>	<b>  1</b>
<b>MESSAGE FROM THE PRESIDENT</b>	<b>  3</b>
<b>PROGRAM OUTCOMES</b>	<b>  4</b>
<b>THE HUB TEAM</b>	<b>  5</b>
<b>BOARD OF DIRECTORS</b>	<b>  6</b>
<b>AUDITORS REPORT &amp; EXPENSES</b>	<b>  7</b>
<b>FUNDERS, SPONSORS &amp; DONORS</b>	<b>  9</b>
<b>EVENT SPONSORS</b>	<b>  10</b>
<b>PROGRAM SPONSORS</b>	<b>  11</b>



# EXECUTIVE DIRECTOR REPORT

## Board Members, Staff, Partners, and Stakeholders:

As we reflect on the past year, I am thrilled to share the remarkable progress we've made at The Hub Family Resource Centre. In 2023-2024, The Hub Family Resource Centre continued to build on our strong foundation, making strides to better serve families across the Wood Buffalo region.

We were thrilled to have moved into a beautiful new space last year, which has allowed us to expand our programs and better accommodate the families we serve. The timing of this move was particularly special, as it coincided with our 20th anniversary as an agency. This milestone represents two decades of dedication to supporting the families of Wood Buffalo, and we couldn't be more grateful for the continued trust and support from the community.

While we celebrate our achievements, we must also recognize the ongoing challenges we face. With resources and funding steadily decreasing, we are continuously tasked with doing more with less, all while striving to meet the growing needs of our community. This year alone, we served over 4,400 unique individuals—a 37% increase from the previous year—demonstrating the rising demand for our services. In addition to the increase in numbers, the complexity of the needs we address has also intensified. We are witnessing a significant rise in requests for support in areas such as family violence, emotional regulation, and overall family wellness, which reflects the evolving and pressing issues within the community.

As an organization, we remain steadfast in our mission to strengthen the well-being and resiliency of parents, caregivers, children and families in Wood Buffalo. The Hub continues to provide dynamic, educational, and enjoyable programs to families and their children—at no cost. From newborns to 18-year-olds, our programs are designed to nurture the development and well-being of children, prevent family violence, and support the resiliency of parents and caregivers.





Our Fort McMurray location continues to serve as the heart of our operations, a hub of activity where families can access a wide array of services and build lasting connections. In addition, our Hub on Wheels (HOW) program has extended our reach into rural communities, ensuring equitable access to our vital resources. This initiative remains crucial to our mission of supporting the well-being and resiliency of families throughout the Wood Buffalo region.

None of this would be possible without the exceptional dedication and hard work of our entire team. I am incredibly proud of the unwavering commitment shown by our Board Members, Staff, Partners, and Stakeholders. Your passion and perseverance have been instrumental in making a lasting impact on the families we serve. The strength of our team is the backbone of our success, and I am deeply grateful for the effort and heart that each of you brings to our shared mission.

As we look ahead, we remain committed to fostering a strong, resilient community, where every parent, caregiver, and child feels supported and connected. I want to extend my deepest thanks to our dedicated staff, volunteers, board members, and community partners, whose unwavering commitment makes our work possible.

**Together, we will continue to foster brighter futures for the families of Wood Buffalo.**

Sincerely,

*Samantha Simpson*  
Executive Director



# MESSAGE FROM THE PRESIDENT

As I begin my third and final year as Board Chair of The Hub Family Resource Centre, I am filled with immense pride and gratitude. Our exceptional staff and volunteers have demonstrated unwavering dedication, working tirelessly to offer invaluable programs and services to families throughout the Regional Municipality of Wood Buffalo (RMWB).

I am grateful for the continued support from our community, partners, and investors. Your contributions have been crucial in enabling us to extend our reach and impact families in and around Fort McMurray. Together, we continue to make a meaningful difference in the lives of those we serve.

With the expansion of our facility, we are now able to welcome a larger number of families into our programs and drop-in-play sessions. This growth is a testament to our collective efforts and the increasing need for our services. However, this heightened demand also presents a challenge: we must navigate the task of doing more with our limited resources. We remain committed to finding innovative solutions and continuing to serve our community with the same dedication and passion. Your ongoing support is more crucial than ever as we work to meet these growing needs and ensure that every family receives the assistance and opportunities they deserve.

Our rural community programs continue to be a cornerstone of our mission. We understand the crucial need to support our rural communities, and we are dedicated to ensuring the sustainability of these essential programs. Currently, our primary challenge is funding for these initiatives. However, our Board of Directors, in close collaboration with our Executive Director, is actively exploring innovative solutions to address these challenges.

As we look ahead to the upcoming year, The Hub remains steadfast in its commitment to our community, adhering to our vision of Healthy Children, Healthy Families, and Healthy Communities. With your continued support, we are confident that we will overcome challenges and persist in making a meaningful difference in the lives of the families we serve.

Thank you for being an integral part of our journey. We eagerly anticipate another year of growth, impact, and community-building together.

Sincerely,

*Kate Buczulak*

Board President



# 2023-2024 PROGRAM OUTCOMES



## CHILD DEVELOPMENT

**99%**

Agree their child has more opportunities to engage in social-emotional development

**96%**

Agree their children have more opportunities to develop independence

**92%**

Agree their child's development has improved because of parent-child play programs



## SUPPORTS

**100%**

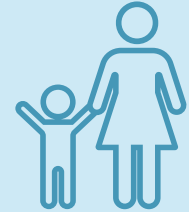
Of Primary Caregivers agree that because of Family Access Services their anxiety around co-parenting has reduced

**100%**

Of Primary Caregivers agree that because of Family Access Services they feel safer

**100%**

Of Exchange Caregivers agree that because of Family Access Services they feel safer.



## CAREGIVER CAPACITY

**100%**

Agree that because of the Hub programs they have more tools to encourage positive interactions with their children/teens.

**100%**

Agree that because of Hub programs I have a better understanding of why it is important to take care of myself as a parent/caregiver



## COMMUNITY

**91%**

Feel less isolated as a result of accessing Hub programming

**90%**

Have created positive connections with new people because of Free Play



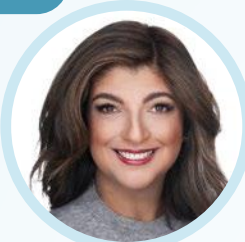
# THE HUB TEAM



**Amy  
Yuill**



**Amiee  
Reid**



**Ana  
Oliveira**



**Anna  
Mc Laren**



**Cindy  
Julaton**



**Crystal-Lee  
Combdon**



**Hilaryann  
McCorriston**



**Katarina  
Semacikova**



**Kim  
MacDougall**



**Maire  
Castro**



**Maysie  
Telan**



**Natasha  
Green**



**Samantha  
Simpson**



**T.J.  
Carabeo**



**Wanda  
Gillingham**

**Past Staff:** Alana Hansen, Julie Penney, Lauren Odland, Monique Williston, Frank Power, Lisa Vroom, Sierra Budesheim







# BOARD OF DIRECTORS



**Kate Buczulak**  
President



**Jadene Spitzer**  
Vice President



**Caileigh Rhind**  
Secretary



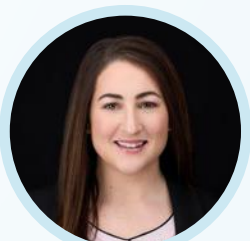
**Amanda Stuart**  
Treasurer



**Dennis Banks**  
Director



**Rhonda Blanchette**  
Director



**Olivia Best**  
Director

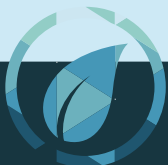
### Past Directors:

Farhat Pervin – Director  
Angela Woods – Director



**THE HUB FAMILY RESOURCE CENTRE**  
**Statement of Revenues and Expenditures**  
**Year Ended March 31, 2024**

	2024	2023
<b>REVENUES</b>		
Grants	\$ 927,417	\$ 928,759
Donations	74,372	14,178
Fundraising	30,236	63,794
	<u>1,032,025</u>	<u>1,006,731</u>
<b>EXPENSES</b>		
Salaries and benefits	667,864	627,489
Rent	136,463	171,805
Materials	32,554	13,686
Facility repair and maintenance	25,430	7,985
Office	21,631	19,193
Insurance	15,948	13,353
Computer network maintenance	15,708	17,808
Professional fees	13,313	12,813
Amortization	12,612	9,462
Advertising and promotion	10,513	15,384
Telephone	10,241	10,024
Training	9,747	12,614
Program development	6,643	27,897
Repairs and maintenance	4,701	634
Photocopying	4,363	3,957
Vehicle	2,916	2,980
Utilities	1,505	10,926
Interest and bank charges	984	725
Fundraising expenses	750	1,110
	<u>993,886</u>	<u>979,845</u>
<b>EXCESS OF REVENUES OVER EXPENSES FROM OPERATIONS</b>	<u>38,139</u>	<u>26,886</u>
<b>OTHER INCOME</b>		
Rental revenue	8,000	-
Interest income	8	-
Expense recoveries	-	23,193
	<u>8,008</u>	<u>23,193</u>
<b>EXCESS (DEFICIENCY) OF REVENUES OVER EXPENSES</b>	<u>\$ 46,147</u>	<u>\$ 50,079</u>



# FINANCIAL STATEMENTS

## THE HUB FAMILY RESOURCE CENTRE Statement of Financial Position March 31, 2024

	2024	2023
<b>ASSETS</b>		
<b>CURRENT</b>		
Cash (Note 6)	\$ 738,683	\$ 544,489
Goods and services tax receivable	2,945	7,574
Prepaid expenses	4,737	13,473
	<u>746,365</u>	<u>565,536</u>
PROPERTY AND EQUIPMENT (Net of accumulated amortization) (Note 4)	<u>56,252</u>	<u>35,404</u>
	<u>\$ 802,617</u>	<u>\$ 600,940</u>
<b>LIABILITIES AND NET ASSETS</b>		
<b>CURRENT</b>		
Accounts payable	\$ 33,630	\$ 63,932
Wages payable	32,648	37,938
Source deductions payable	7,266	6,863
Deferred revenue (Note 5)	415,558	223,602
Other payables (Note 9)	-	1,237
	<u>489,102</u>	<u>333,572</u>
NET ASSETS		
General fund	83,515	197,824
Board designated reserve fund (Note 7)	<u>230,000</u>	<u>69,544</u>
	<u>313,515</u>	<u>267,368</u>
	<u>\$ 802,617</u>	<u>\$ 600,940</u>
LEASE COMMITMENTS (Note 10)		



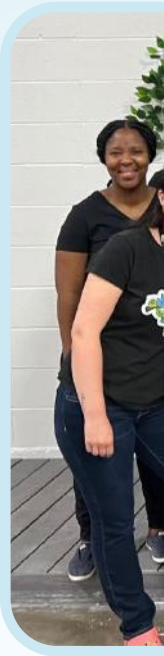
# FUNDERS, SPONSORS & DONORS

## Core Funders & Sponsors:



## Donors:

Amy Lynn Clarke  
Christopher House  
Liani Bowers  
Cydabelle Murphy  
Richard Theriault  
Kevin Hendricks  
Jordan Ratzlaff  
Narinder Pal Si  
Kate Buczulak  
Amanda Stuart  
Caileigh Rhind  
RBC  
Tom Harris TELUS &  
Koodo Stores



*We love attending all of the Hub's programs. It's a chance for me to connect with other moms while my daughter learns to socialize with other children. She has also started to hit her milestones quicker since we started attending. The ladies running the programs are so lovely and treat the children as if they were their own. I feel so fortunate to have this resource in our community.*

*~ Hub Parent*



# EVENT SPONSORS



## June Bug Sponsors:

**Title Sponsor:**  
Syncrude  
operated by Suncor

**Butterfly:**  
Canadian Natural

**Rural Explorers:**  
Pembina  
Enbridge  
CNOOC  
Cenovus

**Bumble Bee:**  
EECOL Electric  
Gregg Distributors  
Finning  
Westjet

## Milk & Cookies Sponsors:

Interipline  
Kinsmen Fort  
McMurray



# PROGRAM SPONSORS

## Village Sponsors:



*I love the hands on learning and non structured play. My toddler loves being creative and playing chef or building blocks up. This space is a perfect place for him to interact with others his age too.*

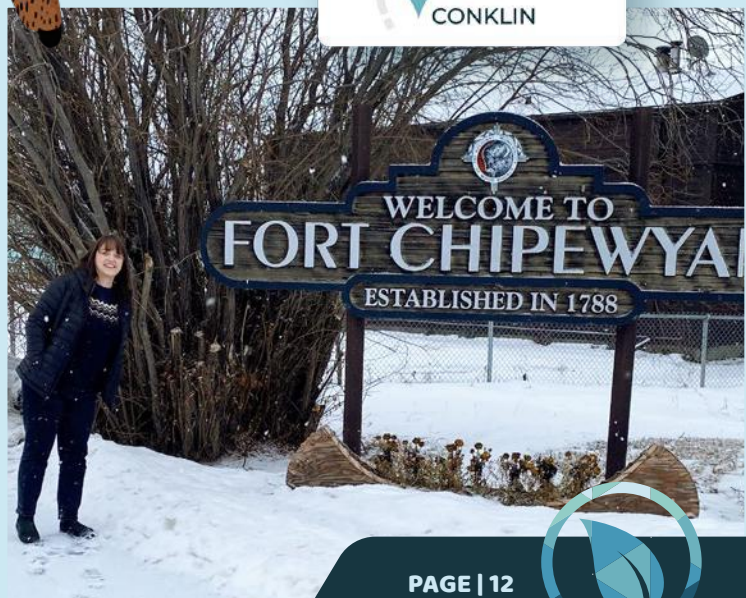
*~ Hub Parent*





Proudly serving rural communities across the Wood Buffalo Region

### Hub on Wheels Sponsors:





# THE HUB

FAMILY RESOURCE CENTRE

Free Child &  
Youth  
Programming

Drop-In Free Play

Parent & Baby  
Groups

Resources &  
Support for  
Parents &  
Caregivers

Rural  
Community  
Supports

Developmental  
Screenings



## CONTACT US

**W:** [thehubfrc.ca](http://thehubfrc.ca)

**E:** [inquiries@thehubfrc.ca](mailto:inquiries@thehubfrc.ca)

**P:** 780.743.9225



Shell Place West Entrance, 1 C. A. Knight Wy, Fort McMurray, AB T9H 5C5