

12385 N. Michigan *Street*

Willow, Alaska 99688





Long Lake Hangar Retreat 12385 N. Michigan Street

WILLOW ALASKA 99688

A Rare Opportunity

This stunning lakefront property on Long Lake is a dream come true for aviation enthusiasts, business ventures, or anyone seeking a private retreat. Featuring a custom log home, a massive hangar with airstrip access, and a versatile shop/garage, this estate offers the perfect blend of functionality and adventure. With direct access to boating, fishing, and year-round outdoor activities, this exceptional property offers endless possibilities.

3 BEDS

—

2 BATHS

—

2,505 SQ.FT. RES

—

4,464 SQ.FT. HANGAR

—

1,512 SQ.FT. SHOP/GARAGE

—

3.29 ACRES

—

\$ 1,350,000

WELCOME

Features You'll Love:

4-8

Discover a beautifully crafted log home with breathtaking lake views, a cozy wood stove, and a spacious layout.

9-10

Experience the ultimate aviation setup with a spacious hangar, direct airstrip access, and a versatile shop for all your storage and workshop needs.

11

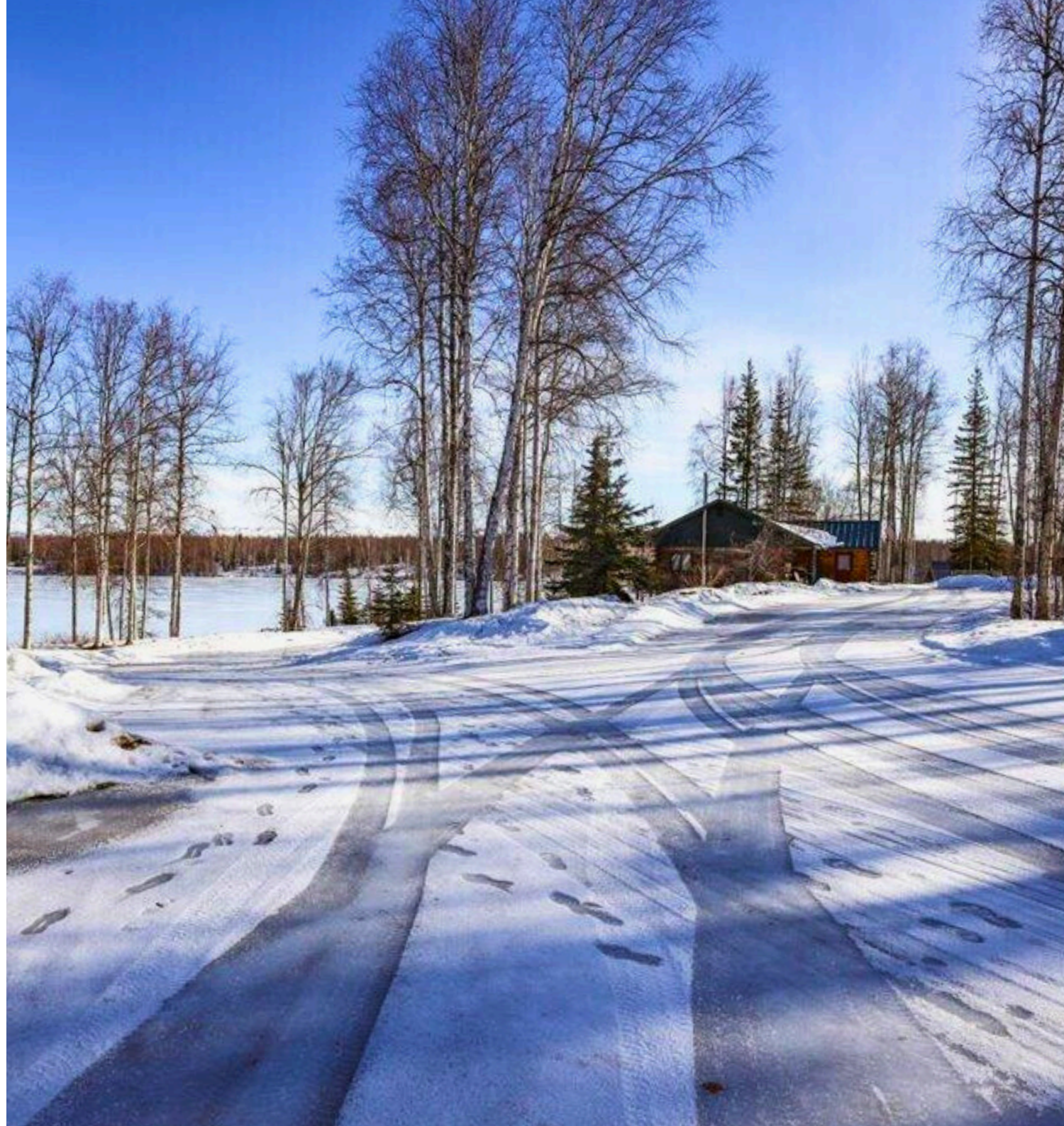
Embrace the possibilities of this scenic lakefront property, offering commercial potential, investment opportunities, and endless outdoor recreation.

12-13

Enjoy ultimate accessibility with a private dock for floatplanes and direct access to Long Lake Airport's runway.

14

Get ready to fly home to this lakefront retreat —schedule your showing today!





Custom Log Home – Comfort and Charm

This spacious 2,505 sq. ft. log home features three bedrooms and two bathrooms, a walkout basement, and an open-concept living area. Enjoy panoramic lake views from the expansive deck or cozy up by the wood stove on the lower level during cooler evenings. The rustic charm blends seamlessly with modern comforts, making this home the perfect place to relax and entertain in the heart of the Alaskan wilderness.





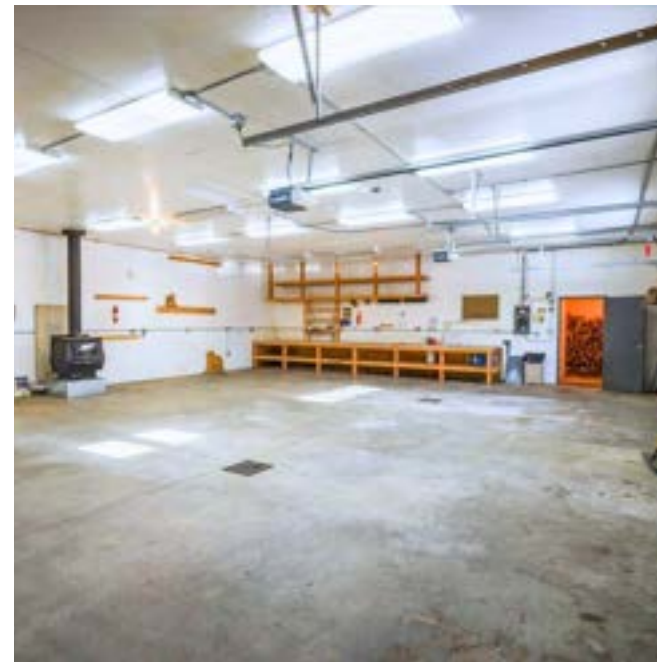




Aviation Enthusiast's Dream – Expansive Hangar & Shop

At the heart of this property is a spacious hangar that provides plenty of room for aircraft storage, maintenance, or business activities. With direct access to the airstrip, travel, and transport are streamlined. Additionally, the versatile shop or garage offers extra space for equipment, vehicles, or workshops, making it suitable for various commercial or recreational purposes.





3 Acres of Scenic Lakefront – Commercial Potential

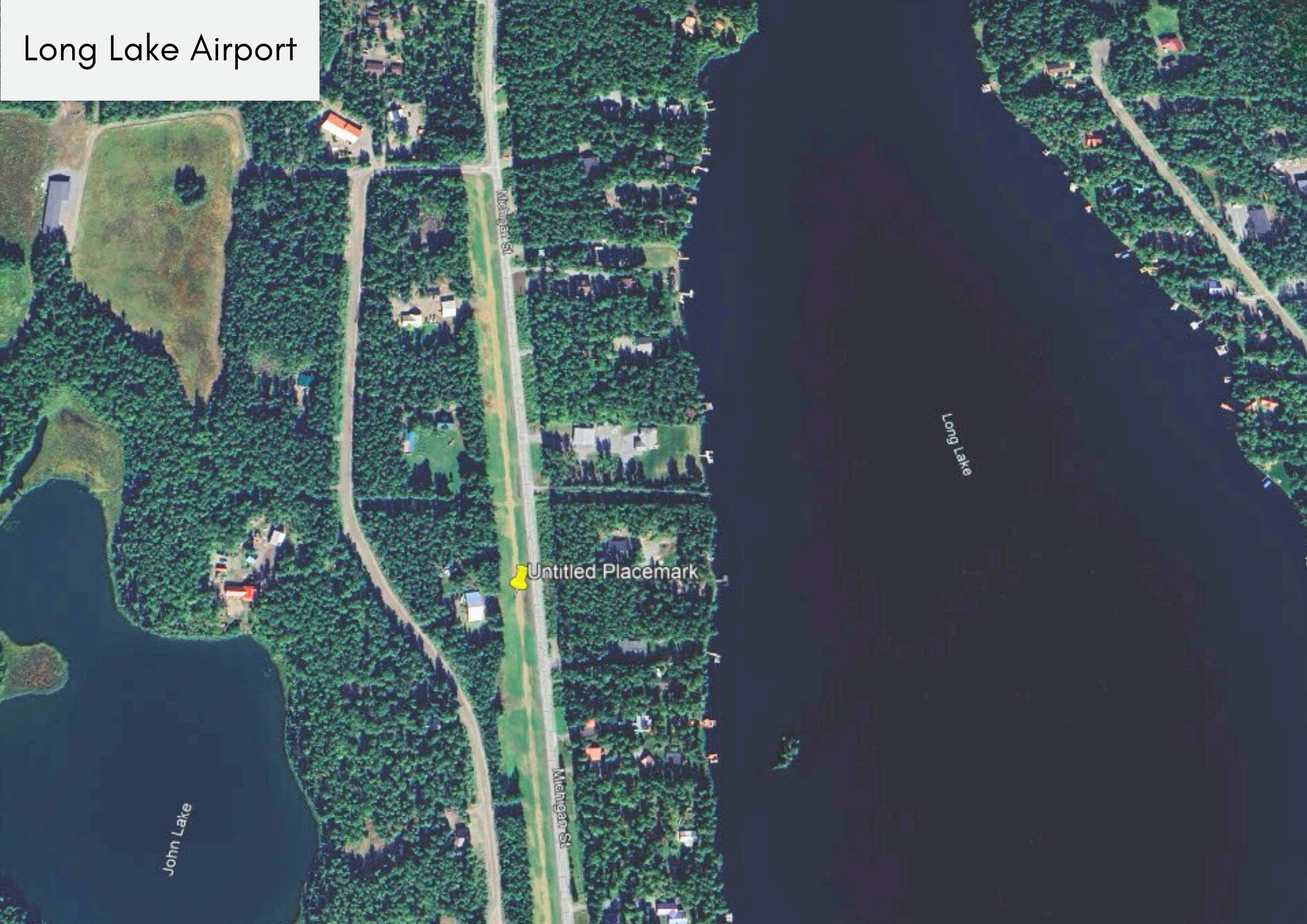
This 3-acre estate provides direct access to Long Lake, allowing boating, fishing, and endless outdoor recreation. The property is zoned for commercial use, offering excellent business development or investment potential. Whether you envision a private lakeside retreat or an active aviation-related business, this property is ready for your vision.



Long Lake Airport



Long Lake Airport



Michigan St

Untitled Placemark

Michigan St

John Lake

Long Lake



Schedule Your Private Showing Today!


This property has an alarm system, and appointments are required for showings. To get here, take the Parks Hwy north to Willow Creek Parkway, turn left onto Crystal Lake Road, then left onto Shirley Lake Road. Next, turn right onto Michigan St, and the property will be on the left, right along Long Lake.

Don't miss the opportunity to own a one-of-a-kind lakeside estate!



KELLERWILLIAMS.


Tammy Ervin, Associate Broker
Keller Williams Realty Alaska Group of Wasilla

 (907) 355-7600

 tammyervine@gmail.com



Stewart Smith, Broker
SSS Commercial Real Estate

 (907) 727-8686

 www.stusell.com

 stewart@stusell.com