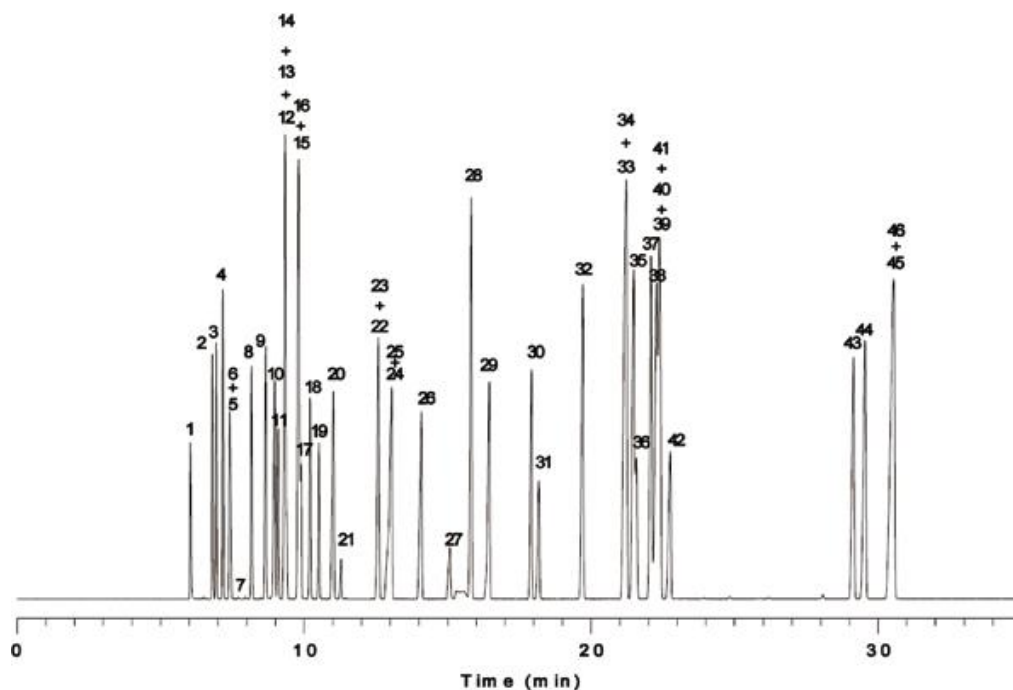


InertSearch™ for GC

InertCap® Applications

Organic solvents

Data No. GA033-0000



System	: GC/FID	Solutes :	1. Methanol	26. i-Amyl alcohol
Column	: InertCap 1		2. Acetone	27. N,N-Dimethyl formamide
	0.25mm I.D.×60m df=0.4µm		3. i-Propanol	28. Toluene
Column Temp.	: 40° C(5min)→4° C/min→230° C(5min)		4. Ethyl ether	29. Methyl-n-butyl ketone
Carrier Gas	: He 130kPa		5. Dichloromethane	30. n-Butyl acetate
Injection	: Split 100mL/min 1µL		6. Methyl acetate	31. Tetrachloroethylene
	250° C		7. Carbon disulfide	32. Chlorobenzene
Detection	: FID Range 10 ¹		8. trans-1,2-Dichloroethylene	33. m-Xylene
	250° C		9. Methyl ethyl keton	34. p-Xylene
Sample	: Organic solvents		10. 2-Butanol	35. Cyclohexanone
	Mixed evenly		11. cis-1,2-Dichloroethylene	36. Cyclohexanol
			12. Ethyl acetate	37. Styrene
			13. n-Hexane	38. 1-Methylcyclohexanol
			14. Chloroform	39. o-Xylene
			15. Tetrahydrofuran	40. 1,1,2,2-Tetrachloroethane
			16. i-Butanol	41. Cellosolve acetate
			17. Methyl cellosolve	42. Butyl cellosolve
			18. 1,2-Dichloroethane	43. o-Dichlorobenzene
			19. 1,1,1-Trichloroethane	44. o-Cresol
			20. n-Butanol	45. m-Cresol
			21. Carbon Tetrachloride	46. p-Cresol
			22. 1,4-Dioxane	
			23. Trichloroethylene	
			24. Ethyl cellosolve	
			25. n-Propyl acetate	