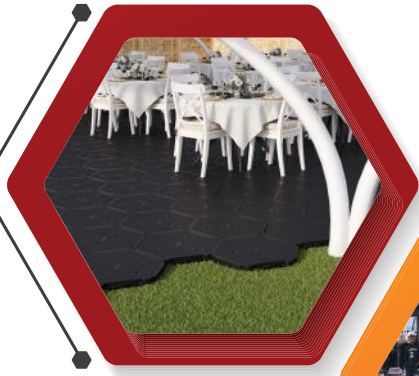


# CONCEPT MANUAL

# ARENA- AND EVENTFLOOR

## WEDDING EVENT

Arena/EventFloor for wedding event and outdoor events. Protecting of existing surfaces and placed on all kind of surfaces



## ROCK CONCERTS

Easy to handle, transport and assembly. Ground protecting interlocking floor with high sustainability



## CONCERT VENUE

Can be applied on all types of outdoor foundations, from sand and dirt to grass. The design makes modular flooring easy



## STUDENT VENUE

Can be applied on all types of outdoor foundations. Lund Nation, Lund Sweden



## ARENA- AND EVENTFLOOR

With Arena- and Eventfloor, you get a unique floor with several fields of applications



## INDOOR SURFACES

Arena- and Eventfloor is the perfect solution for protecting indoor surfaces during events.



## EASY ASSEMBLE

1 person can assemble approx. 80-100 m<sup>2</sup> per hour. No specialist handling required



# ARENA- AND EVENTFLOOR

IP-Group Arena- and Eventfloor is the ultimate ground protection solution for events, arenas, and temporary installations. Whether you're building pavilions, setting up store units, or creating safe walkways for crowds—this system delivers reliable support with a professional finish.

Lightweight yet robust, Arena- and Eventfloor is perfect for festivals, exhibitions, concerts, and campsites. Its modular design ensures fast installation, flexible layouts, and a sleek, stable surface no matter the occasion.

From backstage to center stage, Arena- and Eventfloor helps you create a smooth, safe, and stylish environment—every time.





# GROUND PROTECTION FOR **EVENTS**

Arena- and Eventfloor is an innovative and high-performance flooring system tailored for events and projects where ground stability, safety, and versatility are essential. Designed to handle everything from massive foot traffic to the heaviest vehicles, this system transforms any terrain into a reliable, event-ready surface in no time.

Perfect for:

- Festivals, concerts, and large public gatherings
- Temporary parking and access roads
- Construction zones requiring safe and stable access
- Protecting grasslands, meadows, or forest floors
- Outdoor arenas, tents, and temporary structures

Whether laid on grass, sand, or soil, Arena- and Eventfloor adapts seamlessly to its environment, protecting the surface beneath while providing a secure and durable platform above. Its modular design allows for rapid installation and removal, making it ideal for both short-term use and long-term deployment.

No matter the scale of your event or the challenges of your location—Arena- and Eventfloor is your foundation for success.

# UNIQUE DESIGN

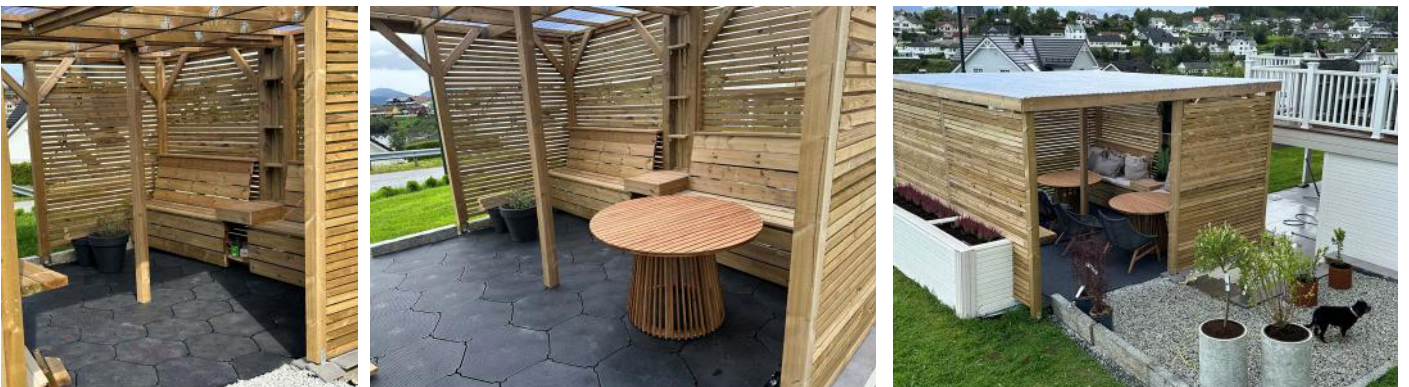
Arena- and Eventfloor is designed for rapid deployment without compromising on durability. Its modular system makes setup effortless, while still delivering the strength and stability you need for even the most demanding environments.

Whether you're setting up store units, pavilions, or temporary roads for heavy vehicles, this flooring solution provides unmatched performance. It's equally ideal for outdoor events, camping areas, and festival grounds, offering superior protection for both people and the surface beneath.

Crafted from ultra-durable plastic, the interlocking panels create a robust and reliable surface that works perfectly on grass, sand, soil, or other uneven terrain. Easy to transport, quick to assemble, and built to last—Arena- and Eventfloor is the smart choice for any temporary setup where safety, strength, and speed matter.



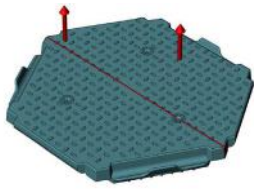
# EASY ASSEMBLY



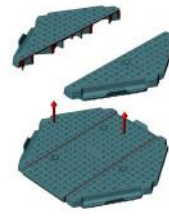
The special shape and form of Arena- and Eventfloor make it easy to be rapidly deployed and with little to no ground preparation. Create a stable, even surface over sand, gravel, mud, grass, asphalt, and other unstable surfaces quickly and efficiently. The rip structure on the underside of each floor tile distributes weight very effectively on uneven ground, ensuring a solid roadway for trucks, forklifts, and other heavy vehicles. When you start assembly and connect Arena- and Eventfloor tiles with "over-underlay", you achieve a very great strength as the floor tiles support each other on 6 sides.

# STRAIGHT EDGES

Half tiles for straight edge:

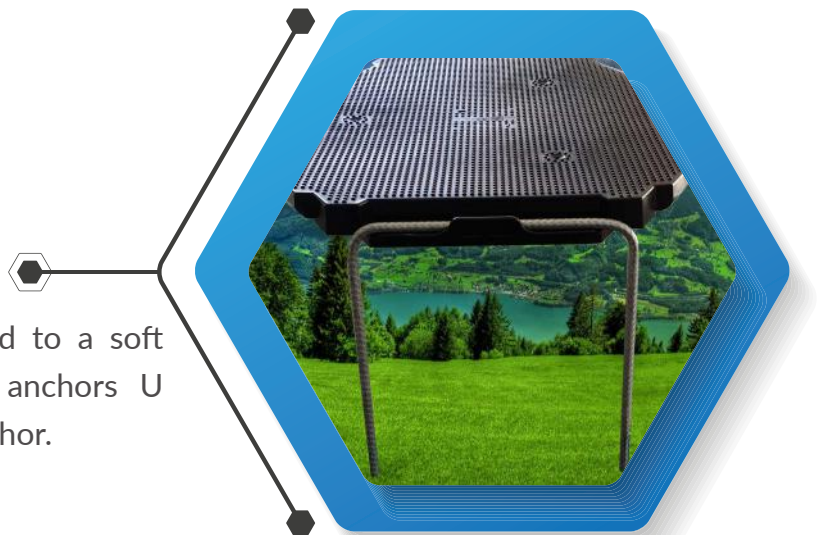


Triangles for straight edge:



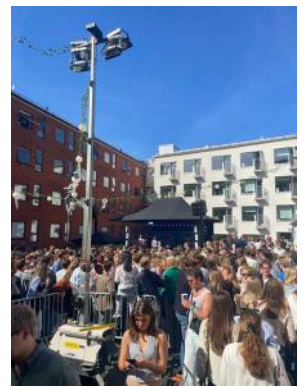
## EARTH ANCHOR

All floor types can be fixed to a soft substructure with ground anchors U profile and straight earthanchor.



# LUND NATION, LUND SWEDEN

Here's what one of our satisfied customers had to say about our arena-event flooring



## Joel Severinsson, Kurator

"We chose IP-Group's Arena- and Eventfloor to protect the lawn during our courtyard event – and it delivered far beyond expectations. From the very first contact, the communication was outstanding: fast, clear, and professional. The flooring system was incredibly easy to install, felt solid underfoot, and made it effortless to move heavy equipment like staging and audio systems across the area. Despite high foot traffic, the grass remained completely intact. Packing down was just as smooth. Arena- and Eventfloor proved to be a smart, reliable solution – and we can highly recommend both the product and the seamless experience of working with IP-Group."

# SUMMER FESTIVALS

Arena- and Eventfloor can be assembled as floor for Summer Festivals and other events. There are no sharp edges on the floor tiles which make it smooth and safe to assemble. By using standard cleaning fluids and pressure washer it is very easy to clean.

WARM, COMFORT  
**WHEN DANCING WITH**  
SOMEONE YOU LOVE







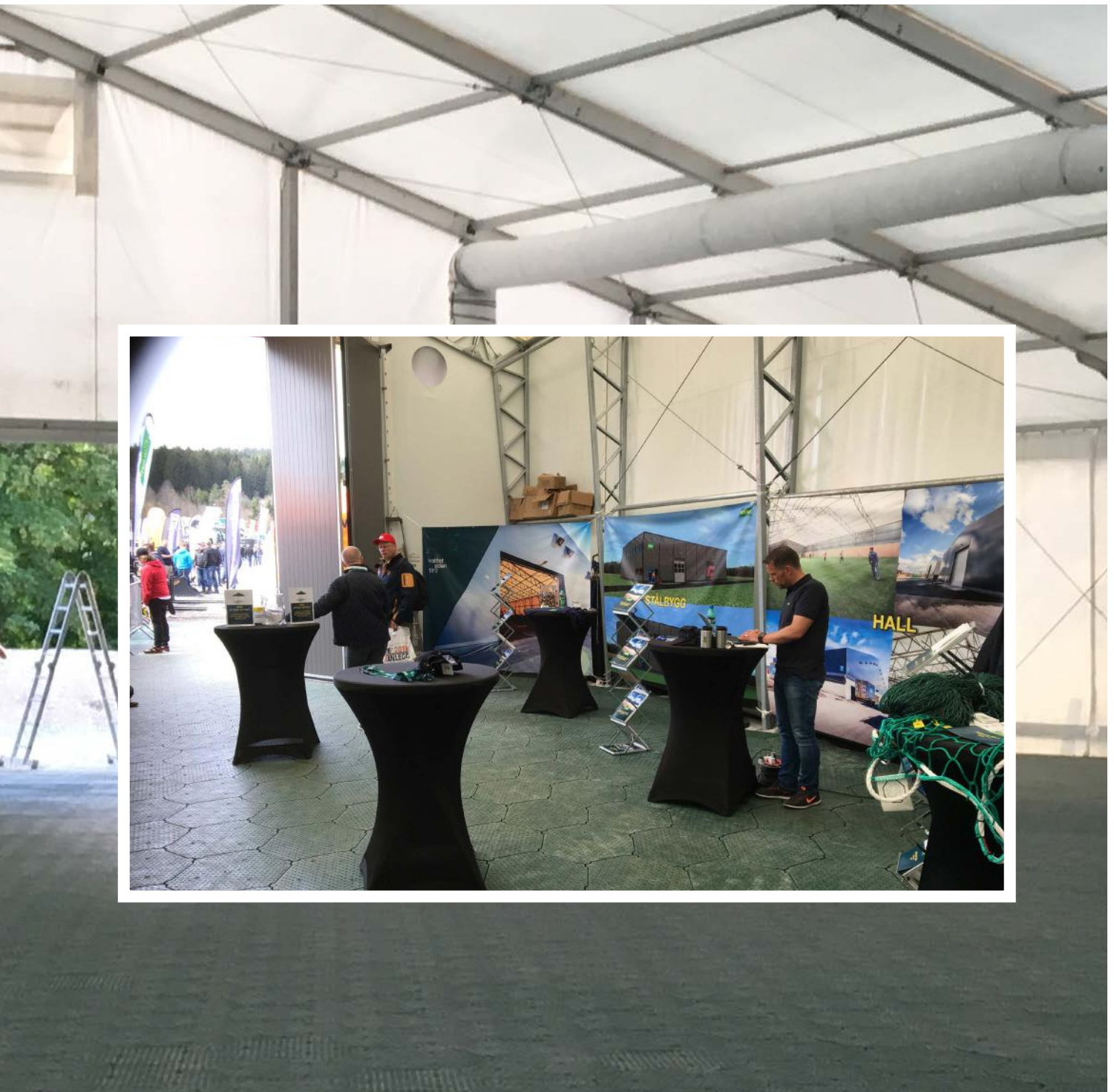
# EXHIBITION **TENT**



EXHIBITION  
**PROMOTE YOUR STAND**  
BE IN FRONT

You can assemble the floor system without any use of tools. There are no sharp edges on the floor tiles which make it smooth and safe to assemble. By using standard cleaning fluids and pressure washer it is

very easy to clean. It is unique to protect all kind of surfaces and is optimal to use. Each tile is durable, easy to clean, slip-resistant, and contains UV additives for longer outdoor life.







# PROTECTION FOR **INDOOR EVENTS**



## **EXHIBITION EVENTS**

---

Designed for versatility, it safeguards floors from damage while providing a stable and slip-resistant surface.



## **FAST TO INSTALL, EASY TO REMOVE**

---

Designed for quick and effortless installation, one person can assemble 80-100 m<sup>2</sup> per hour. Its durable, slip-resistant design makes it ideal for concerts, exhibitions, trade shows, and sports events



## **SMART FLOORING FOR CONGRESS MEETINGS**

---

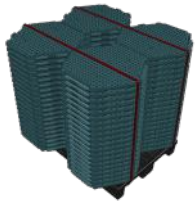
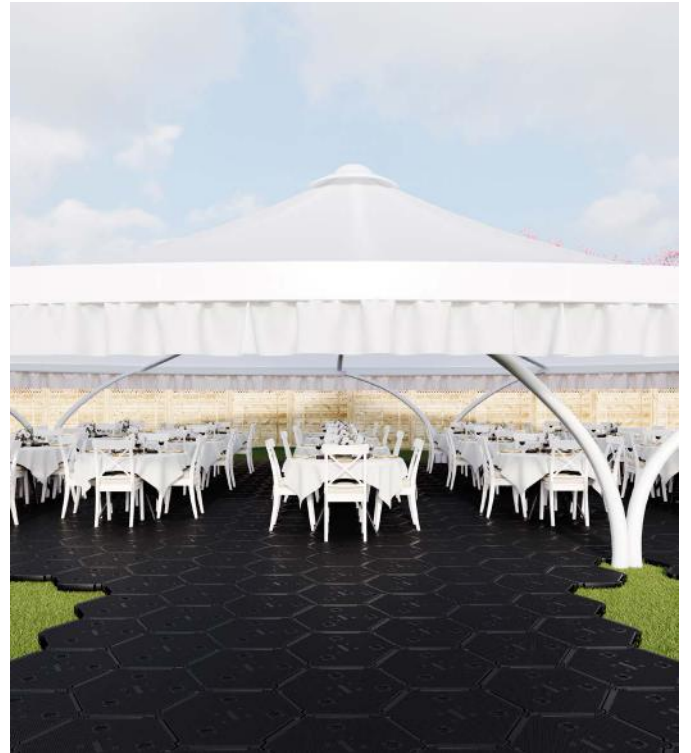
Arena- and Eventfloor is the ideal solution for congress meetings. Arena- and Eventfloor combines durability with a sleek, professional look.

# TECHNICAL INFORMATION



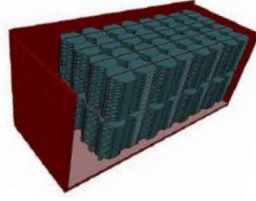
## Arena- and Eventfloor

- Material: Polyolefins
- Made in Sweden
- Point Load: 5 ton/m<sup>2</sup>
- Length: 630 mm
- Width: 575 mm
- Height: 50 mm
- Weight/tile: 2,8 kg
- Weight/m<sup>2</sup>: ca 10,3 kg
- Colour: Black. Request for optional colours.
- Temperature: -30 ° C to + 60



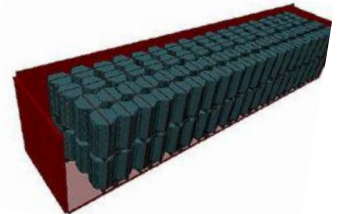
## LOADING ON A PALLET

- 84 pcs base tiles (22,68 m<sup>2</sup>)
- 1200 x 1200 x 1200 mm (LxWxH)
- Weight pallet: 260 kg
- Double stack two pallets to a total height of 2400 mm



## LOADING 20FT CONTAINER

- 1344 pcs base tiles (362,88 m<sup>2</sup>)
- Weight container: 1344 pcs x 2,8 kg = 3763,20 kg + pallets
- 1 Pallet: 115 cm high (20 tiles high) = 80 pcs/pallet = 21,6 m<sup>2</sup>.
- Totally 16 pallets stacked á 21,6 m<sup>2</sup> = 1280 pcs = 345,6 m<sup>2</sup>.



## LOADING 40HC CONTAINER

- 3024 pcs base tiles (816,48 m<sup>2</sup>)
- Weight container: 3024 pcs x 2,8 kg = 8467,2 kg
- Totally 36 pallets stacked.

## LOADING SEMITRUCK





BUILT FOR **EVENTS.** READY FOR **EVERYTHING**

[WWW.IP-GROUP.COM](http://WWW.IP-GROUP.COM)

[WWW.IP-GROUP.SE](http://WWW.IP-GROUP.SE)

[WWW.IP-GROUP.NO](http://WWW.IP-GROUP.NO)

