

Trackside Outdoor Marshalling Panels  
as Used On The NSCD Safer Isolations Schemes  
2023

Edition V1 - August 2023

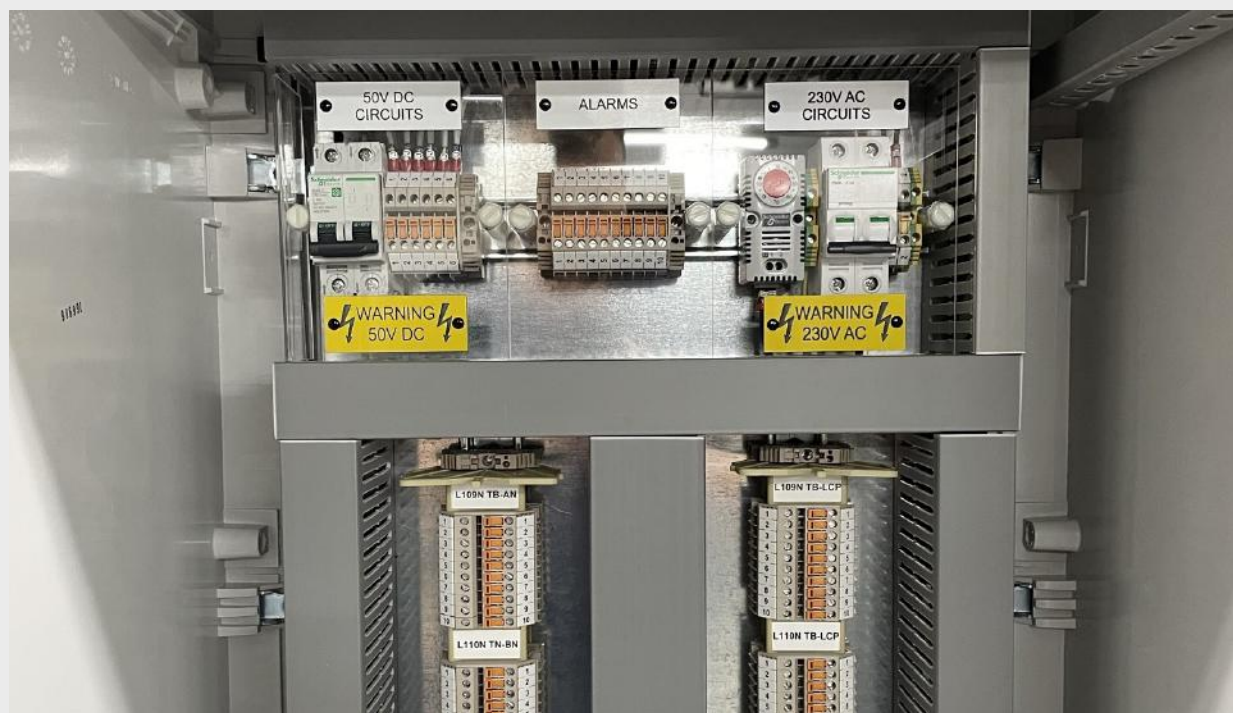
Design & Manufacturers of:

| AC Switchgear | DC Switchgear | Bespoke Control Panels | AC & DC PDC's & PDU's |  
| Copper Junction Boxes | Marshalling Panels | Transition Boxes | Earth Bars |

# Contents

Page	
2	Introduction
3	Technical Information
4	Typical Internal Schematic Wiring Diagram
5-6	General Arrangement Drawings for NSCD/MP4
7-8	General Arrangement Drawings for NSCD/MP8

All ratings based on an operating temperature of 40°C ambient temperature, with 50°C temperature rise



Head Office:

34 Forest Road

Hinckley

Leicestershire

LE10 1HB

Tel: 01455 234996

Email: [info@amjelectricaldesigns.co.uk](mailto:info@amjelectricaldesigns.co.uk)

Workshop:

Units 53 & 73 Sparkenhoe Business Centre

Southfield Road

Hinckley

Leicestershire

LE10 1UB

Tel: 01455 616686

# Trackside Outdoor Marshalling Panels



1. Interface Cabinet as Typically used on the NSCD programme.
2. NSCD/MP4 - Single Door - Upto 4 No.NSCD Connected or Max. 160 WTR4 Terminals
3. NSCD/MP8 - Double Door - Upto 8 No.NSCD Connected or Max. 3200 WTR4 Terminals
4. Mounted on GRP Frame Finished in RAL7035 Light Grey
5. Vented Roof with Canopy Cover Fitted
6. Manufactured from Fibre Glass Reinforced Polyester, Fully Sealed, IP65 IK10 Enclosure

# Technical Information

TECHNICAL DATA NSCD/MP4	
Supply Voltage	110V AC / 200-250V AC Single Phase 3 wire supply (L/LN/PE)
Supply Frequency	50Hz
Terminal Arrangement	Upto 4 Banks of 40 WTR4 Disconnect Terminals or max 160 Terminals
Earthing arrangement	4mm Earthing Terminals Fitted
Operating temperature	Minus 30 DegC to Plus 60 DegC
Mechanical Protection	IK10
Box Construction	Fibre glass reinforced Polyester, light grey RAL7035 EN 60670-1, EN 60670-22 Flame Retardent IEC 60695-2-11:2014
Min degree of protection	IP65
Stand construction	GRP light grey RAL7035
Miscellaneous	DP 6A MCB and terminals for 50V DC circuits DP 2A MCB 110V AC / 230V AC for heater and thermostat 10 No WTR4 alarm terminals 110V AC / 230V AC PIR operated internal cabinet LED
Cable management	100mm high narrow slot trunking LSF
Main Cabinet dimensions	1000mm high X 500mm wide x 420mm deep
Stand Dimensions	650mm high X 450mm wide x 420mm deep

TECHNICAL DATA NSCD/MP8	
Supply Voltage	110V AC / 200-250V AC Single Phase 3 wire supply (L/LN/PE)
Supply Frequency	50Hz
Terminal Arrangement	Upto 8 Banks of 40 WTR4 Disconnect Terminals or max 320 Terminals
Earthing arrangement	4mm Earthing Terminals Fitted
Operating temperature	Minus 30 DegC to Plus 60 DegC
Mechanical Protection	IK10
Box Construction	Fibre glass reinforced Polyester, light grey RAL7035 EN 60670-1, EN 60670-22 Flame Retardent IEC 60695-2-11:2014
Min degree of protection	IP65
Stand construction	GRP light grey RAL7035
Miscellaneous	DP 6A MCB and terminals for 50V DC circuits DP 2A MCB 110V AC / 230V AC for heater and thermostat 10 No WTR4 alarm terminals 110V AC / 230V AC PIR operated internal cabinet LED
Cable management	100mm high narrow slot trunking LSF
Main Cabinet dimensions	1000mm high X 500mm wide x 420mm deep
Stand Dimensions	650mm high X 450mm wide x 420mm deep

Head Office:

34 Forest Road

Hinckley

Leicestershire

LE10 1HB

Tel: 01455 234996

Email: [info@amjelectricaldesigns.co.uk](mailto:info@amjelectricaldesigns.co.uk)

Web: [www.amjelectricaldesigns.co.uk](http://www.amjelectricaldesigns.co.uk)

Workshop:

Units 53 & 73 Sparkenhoe Business Centre

Southfield Road

Hinckley

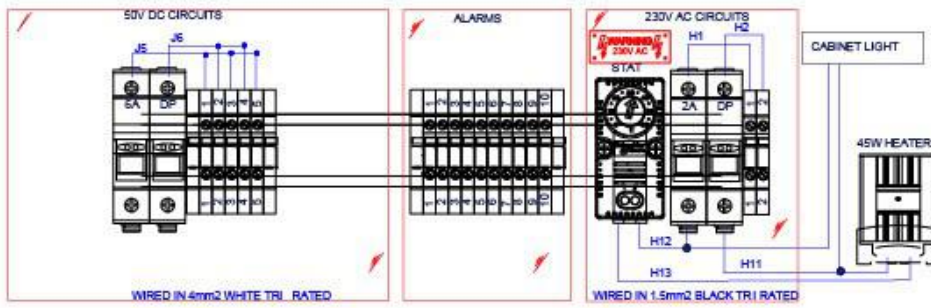
Leicestershire

LE10 1UB

Tel: 01455 616686

Email: [info@amjelectricaldesigns.co.uk](mailto:info@amjelectricaldesigns.co.uk)

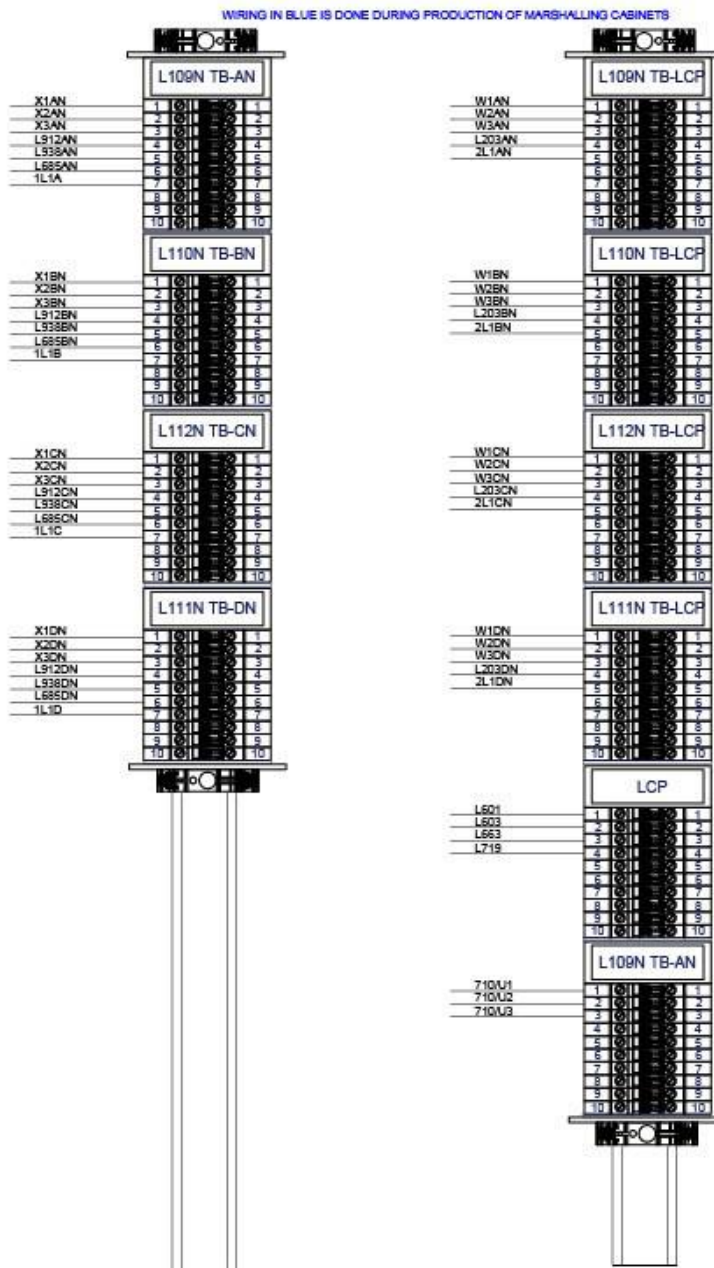
# Typical Internal Schematic Wiring Drawings



Rev.	Description:	By:	Date:
A			

Amendments			
Rev.	Date	Drawn:	Checked:
1	14/10/2021	AMJ	JMU
1	14/10/2021		



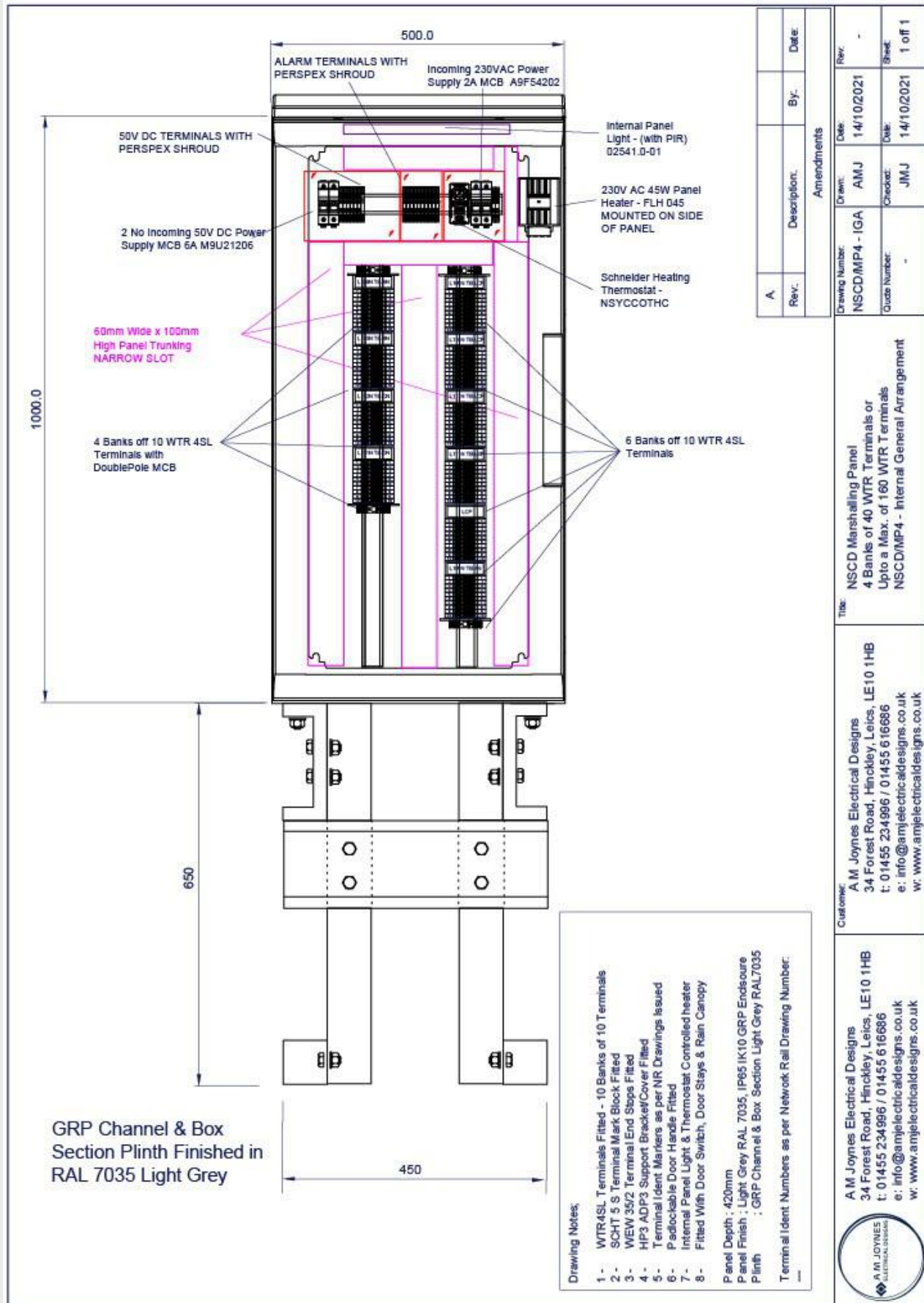
Title: NSCO Marshalling Panel  
4 Banks of 40 WTR Terminal or  
Up to a Max. of 160 WTR Terminals  
NSCO/MP4 - Internal Schematic Drawing

Customer: A M Joyne Electrical Designs  
34 Forest Road, Hincley, Leics, LE10 1HB  
t: 01455 234996 / 01455 616686  
e: info@amjelectricaldesigns.co.uk  
w: www.amjelectricaldesigns.co.uk

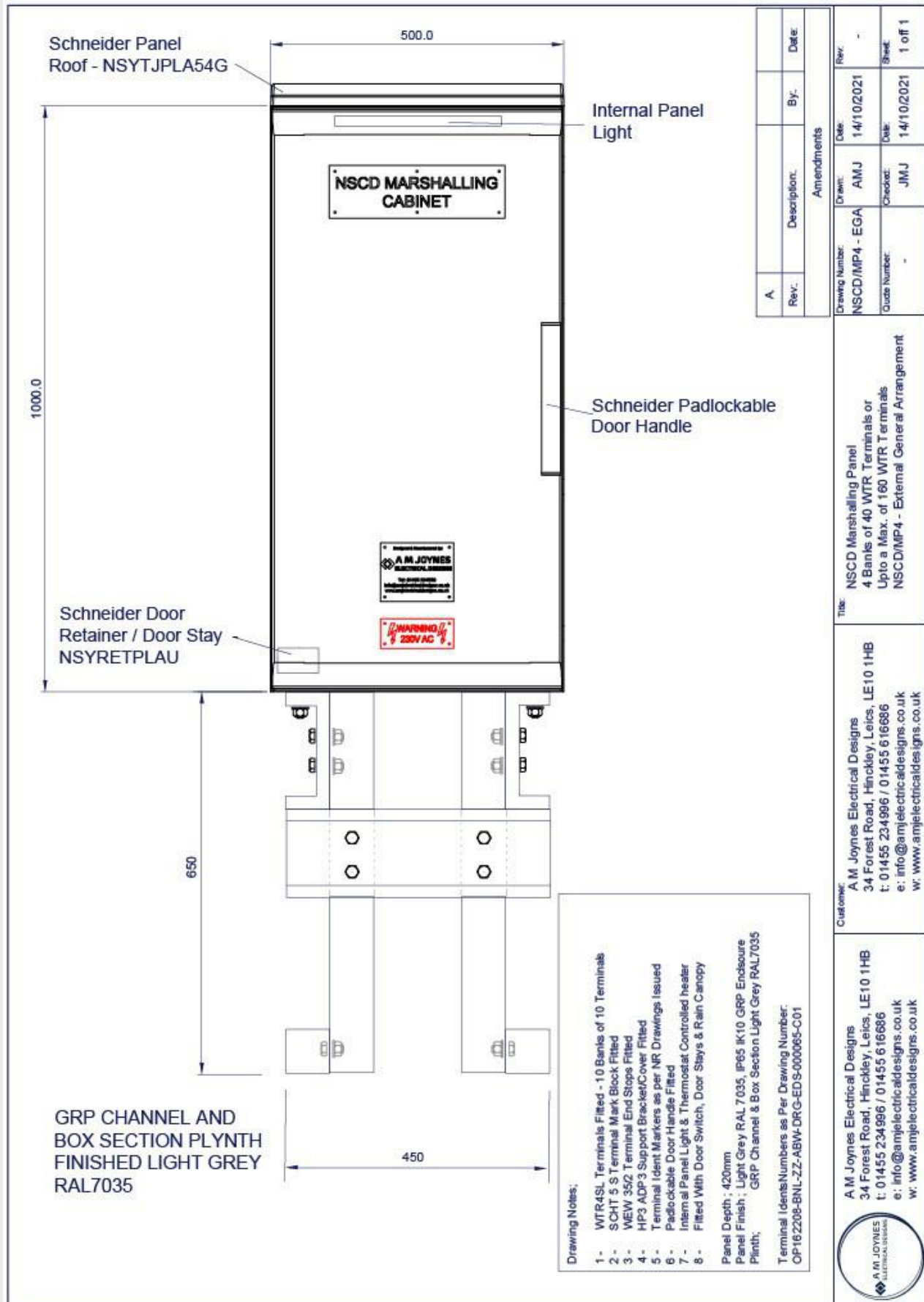
A M Joyne Electrical Designs  
34 Forest Road, Hincley, Leics, LE10 1HB  
t: 01455 234996 / 01455 616686  
e: info@amjelectricaldesigns.co.uk  
w: www.amjelectricaldesigns.co.uk



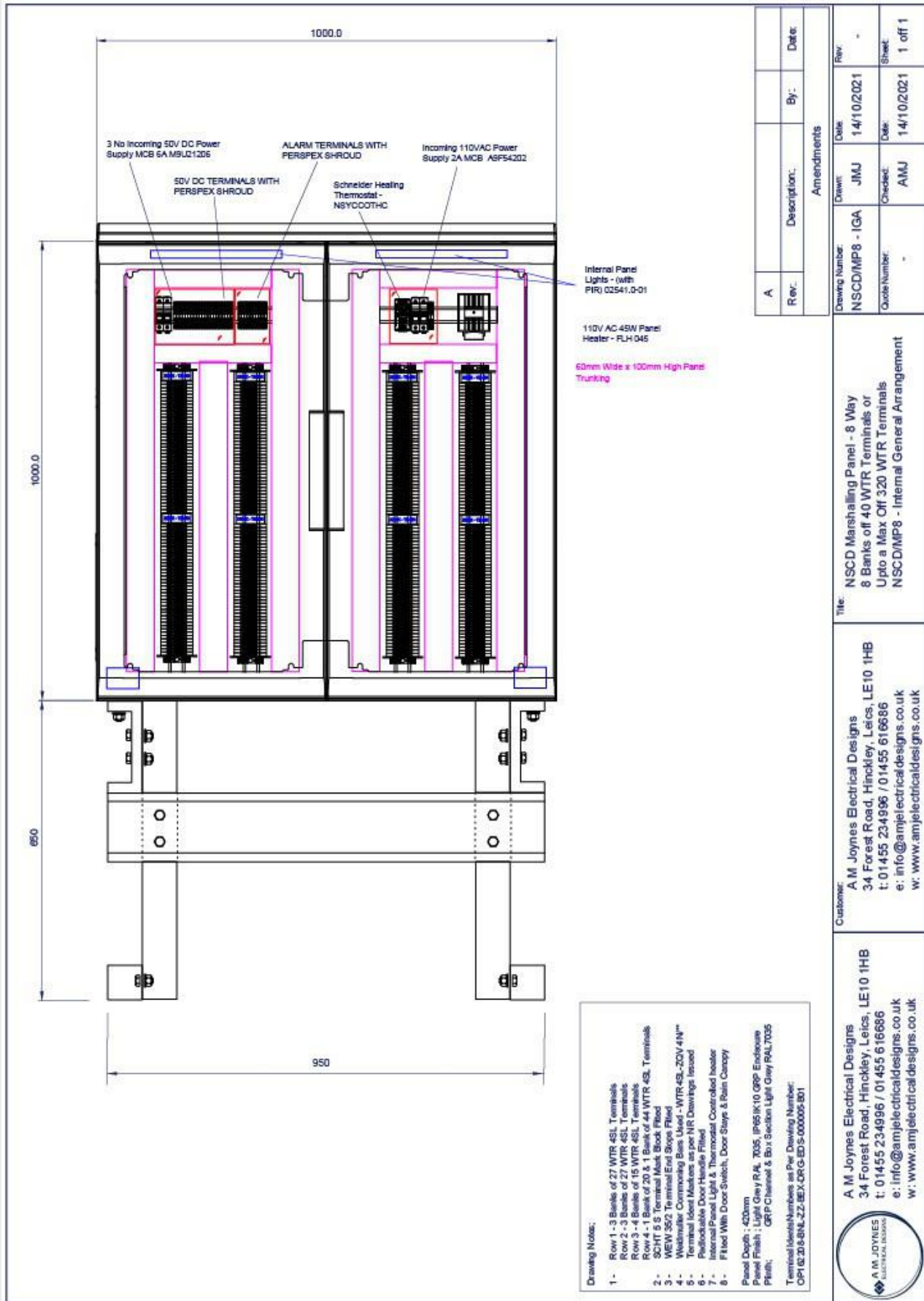
# NSCD/MP4 - Internal General Arrangement



# NSCD/MP4 - External General Arrangement



# NSCD/MP8 - Internal General Arrangement



Rev.	Description:	By:	Date:
A			

Amendments			
Drawing Number:	Drawn:	Date:	Rev.
NSCD/MP8 - IGA	JMJ	14/10/2021	-
Quote Number:	Checked:	Date:	Sheet:
-	AMJ	14/10/2021	1 of 1

**Title:** NSCD Marshalling Panel - 8 Way  
8 Banks of 40 WTR Terminals or  
Up to a Max Of 320 WTR Terminals  
NSCD/MP8 - Internal General Arrangement

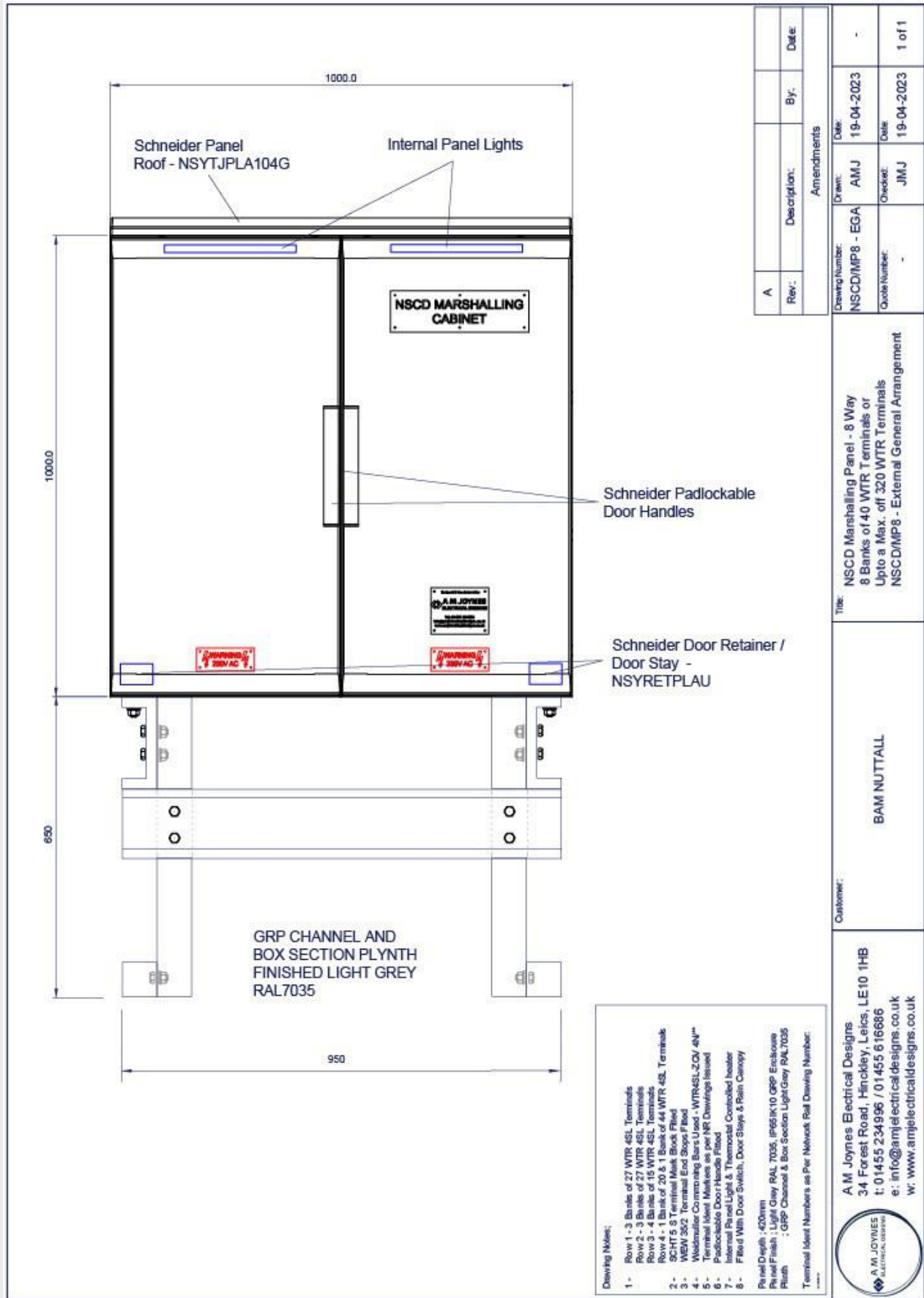
**Customer:** A.M. Joyne's Electrical Designs  
34 Forest Road, Hinckley, Leics, LE10 1HB  
t: 01455 234996 / 01455 616686  
e: info@amjelectricaldesigns.co.uk  
w: www.amjelectricaldesigns.co.uk

**A.M. JOYNES ELECTRICAL DESIGNS**  
34 Forest Road, Hinckley, Leics, LE10 1HB  
t: 01455 234996 / 01455 616686  
e: info@amjelectricaldesigns.co.uk  
w: www.amjelectricaldesigns.co.uk

- Drawing Notes:**
- Row 1-3 Banks of 27 WTR 4SL Terminals  
Row 2-3 Banks of 27 WTR 4SL Terminals  
Row 3-4 Banks of 15 WTR 4SL Terminals  
Row 4-1 Bank of 20 & 1 Bank of 44 WTR 4SL Terminals  
SCHT 5 S Terminal Mark Book Filled
  - MEW 352 Terminal End Stops Filled
  - Weatherstripping Bees Used - WTR 4SL-ZOV 4N<sup>™</sup>
  - Terminal Ticket Markers as per NR Drawings Issued
  - Removable Door Handle Filled
  - Internal Panel Light & Thermostat Controlled heater
  - Filled With Door Switch, Door Stop & Rain Canopy
- Panel Depth - 400mm  
Panel Finish: Light Grey RAL 7035, IP65 IK10 GRP Enclosure  
Finish: GRP Chassis & Box Specimen Light Grey RAL7035
- Terminal Identifiers/Numbers as Per Drawing Number:  
OPI1620&8NL-ZZ-BEX-DRG-EDS-000005-B01



# NSCD/MP8 - External General Arrangement



Rev:	Description:	By:	Date:
A			

Amendments			
Drawing Number:	Drawn:	Date:	
NSCD/MP8 - EGA	AMJ	19-04-2023	
Quote Number:	Checked:	Date:	
	JMJ	19-04-2023	1 of 1

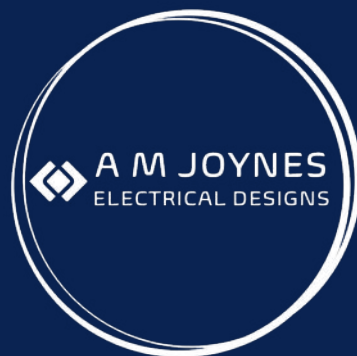
Title: NSCD Marshalling Panel - 8 Way  
8 Banks of 40 WTR Terminals or  
Up to a Max. of 320 WTR Terminals  
NSCD/MP8 - External General Arrangement

Customer: BAM NUTTALL

A.M. Joynes Electrical Designs  
34 Forest Road, Hinckley, Leics, LE10 1HB  
t: 01455 234996 / 01455 616686  
e: info@amjelectricaldesigns.co.uk  
w: www.amjelectricaldesigns.co.uk



- Drawing Notes:
- Row 1 - 3 Banks of 27 WTR 4SL Terminals
  - Row 2 - 3 Banks of 27 WTR 4SL Terminals
  - Row 3 - 4 Banks of 15 WTR 4SL Terminals
  - Row 4 - 1 Bank of 20 & 1 Bank of 44 WTR 4SL Terminals
  - SCHT 5 S Terminal Mark Block Filled
  - WEGW 3502 Terminal End Stops Filled
  - Woodruff Comms Bars Used - WTR4SL-2GV 4N"
  - Terminal Ident Markers as per NR Drawings Issued
  - Padlockable Door Handle Fitted
  - Internal Panel Light & Thermostat Controlled heater
  - Fitted With Door Switch, Door Stops & Rain Canopy
- Panel Depth - 420mm  
Panel Finish - Light Grey RAL 7035 IP65 IK10 GRP Enclosure  
Ratth - GRP Channel & Box Section Light Grey RAL 7035  
Terminal Ident Numbers as Per Network Rail Drawing Number:



Head Office:

34 Forest Road

Hinckley

Leicestershire

LE10 1HB

Tel: 01455 234996

Email: [info@amjelectricaldesigns.co.uk](mailto:info@amjelectricaldesigns.co.uk)

Web: [www.amjelectricaldesigns.co.uk](http://www.amjelectricaldesigns.co.uk)

Workshop:

Units 53 & 73 Sparkenhoe Business Centre

Southfield Road

Hinckley

Leicestershire

LE10 1UB

Tel: 01455 616686

Email: [info@amjelectricaldesigns.co.uk](mailto:info@amjelectricaldesigns.co.uk)