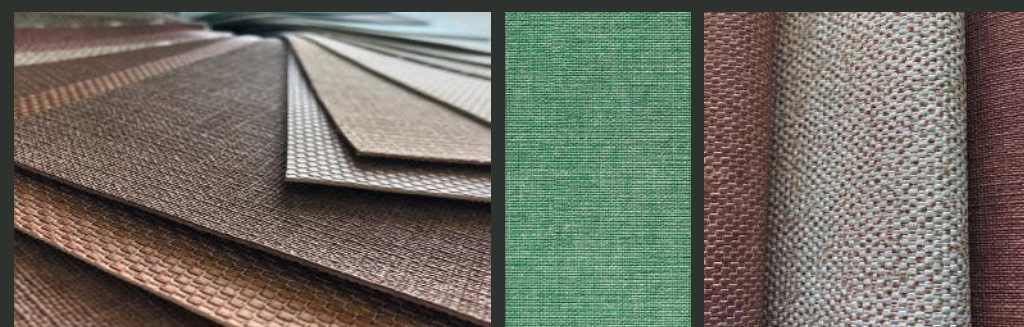




INDOOR & OUTDOOR  
CONTRACT FURNITURE FABRICS

SEGU - FRECKLE - PUKKA

Indoor - Outdoor



**NL**

Een vernieuwende, trendy collectie kunstleer. Een aantal van de supersterke, kleurvaste en makkelijk te reinigen dessins heeft de aantrekkelijke uitstraling van geweven textiel en is verkrijgbaar in modieuze, zoete 'ice-cream kleuren'. De collectie is geschikt voor de stoffering van meubels in de interieurs van zowel particulieren als horeca- en zorgprojecten, omdat deze aan alle eisen op het gebied van veiligheid en hygiëne voldoet. Zo zijn de materialen antibacterieel, anti-allergeen en brandvertragend.

**EN**

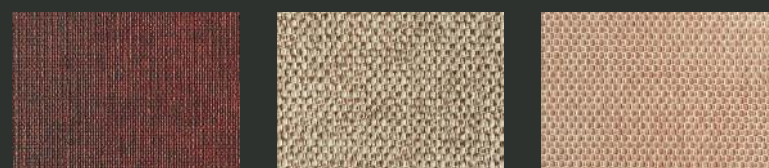
An innovative, trendy collection of artificial leather. Some of the super strong, colourfast and easy to clean designs have the attractive appearance of woven textiles and are available in fashionable, sweet 'ice-cream colors'. The collection is suitable for the upholstery of furniture in the interiors of both private and hospitality and health care projects, because it meets all requirements in terms of safety and hygiene. The materials are antibacterial, anti-allergenic and fire-retardant.

**CHARACTERISTICS**

Composition:	Topcoat: 85% Vinyl Backing: 15% CO
Weight:	800 gr / m <sup>2</sup>
Thickness:	1.20 - 1,40 mm
Roll Width:	140 cm
Roll Length:	25 meter
Abrasion resistance:	>150.000 cycles (Martindale)
Light fastness:	> 6 ISO 105-B02 (Blue Scale)
Colour fastness to artificial weathering:	> 7 ISO 105-B04 (Blue Scale)
Colour fastness to sea water:	4-5 Grey Scale ISO 105-E02
Colour fastness to chlorinated water:	4-5 Grey Scale ISO 105-E03
Colour fastness to saliva:	4-5 Grey Scale DIN 53160-1
Colour fastness to alkaline perspiration:	4-5 Grey Scale ISO 105-E04
Colour fastness to acid perspiration:	4-5 Grey Scale ISO 105-E04
Resistance ammoniac solution (urine):	Good
Resistance to artificial blood:	Good
Bleach (4,5% chlorine) resistance:	No change
Ethyl alcohol 96% vol. resistance:	4-5 Grey Scale DIN 54021
Bacterial Resistance:	JIS Z 2801 Sanitized
Fungal Resistance:	EN ISO 846 A Sanitized

Flame Retardancy:	EN 1021, Part 1 & 2 NF P 92-507 (M2) BS 5852 (Crib 5) DIN 4102 (B2)	IMO 2010 FTP Code Part 8 UNI 9175 1.IM FMVSS 302 <100
-------------------	--	---

SEGU - FRECKLE - PUKKA



BY VYVA FABRICS

Indoor - Outdoor

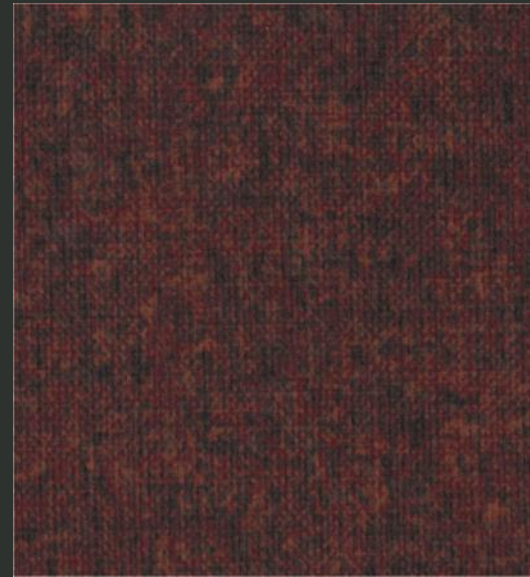


INFO@VYVAFABRICS.NL WWW.VYVAFABRICS.NL



SEGU - FRECKLE - PUKKA

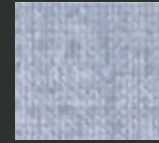
Indoor - Outdoor



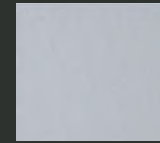
SEGU 5002 SE  
RED SNAPPER



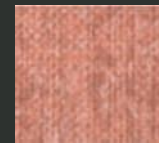
5023 PU  
LAVENDER



5009 SE  
PEARL



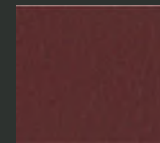
454 366  
GLACIER



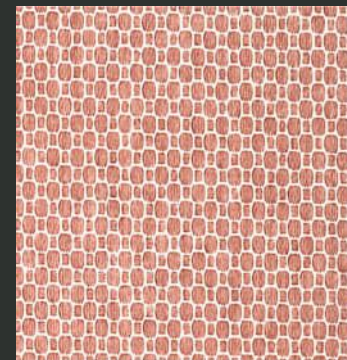
5014 SE  
FLAMINGO



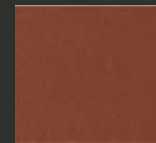
FRECKLE 5025 FR  
GRAPEFRUIT



454 351  
PORT



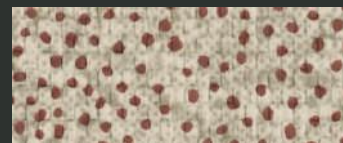
PUKKA 5022 PU  
RHUBARB



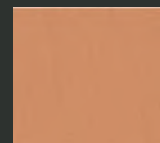
454 297  
RUSSET



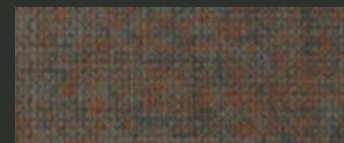
5018 PU  
TANGERINE



FRECKLE 5028 FR  
CHOCOLAT



454 345  
APRICOT



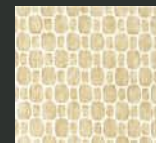
SEGU 5003 SE  
SHORE



SEGU 5010 SE  
CORAL



454 336  
BRANDY



5016 PU  
VANILLA CHAI



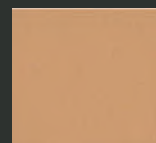
5021 PU  
ROSEHIP



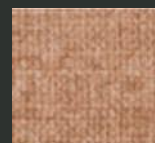
PUKKA 5015 PU  
PEACH



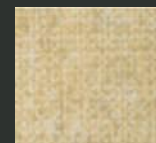
454 361  
MELON



454 354  
RUM SHERBET



5011 SE  
SALMON



5007 SE  
SAND



SEGU 5008 SE  
SCALLOP SHELL

SEGU - FRECKLE - PUKKA

Indoor - Outdoor



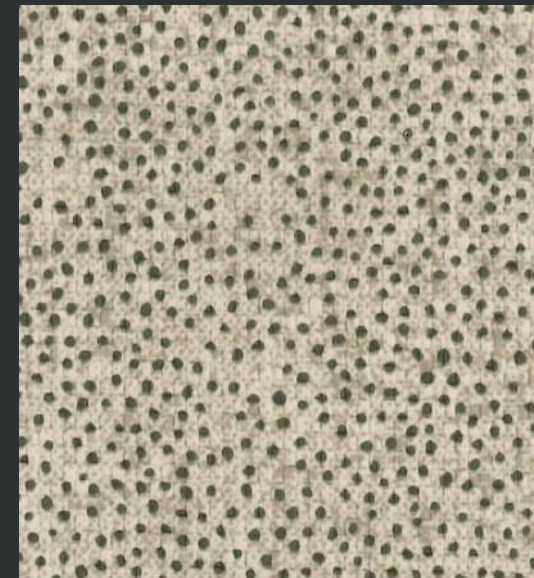
SEGU 5004 SE  
BAY



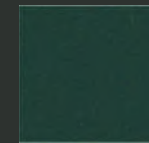
5026 FR  
EUCALYPTUS



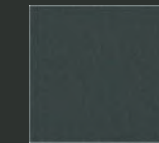
5005 SE  
REEF



FRECKLE 5027 FR  
OATMEAL



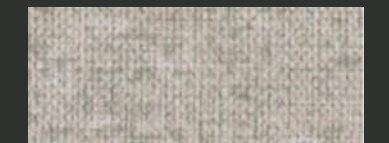
454 296  
HUNTER GREEN



454 316  
SLATE



5000 SE  
HARBOUR



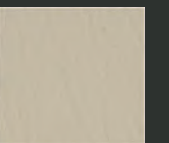
SEGU 5006 SE  
OYSTER



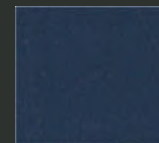
5001 SE  
DEEP WATER



PUKKA 5019 PU  
JASMIN



454 329  
NATURAL



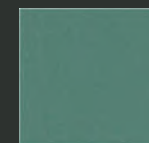
454 292  
ROYAL BLUE



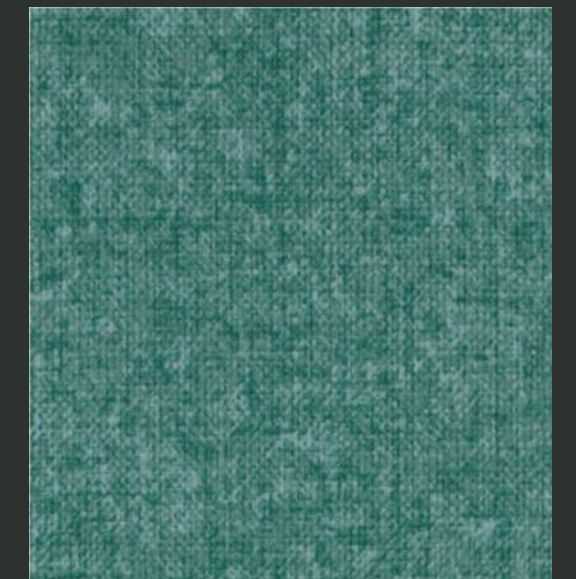
5017 PU  
CHAMOMILLE



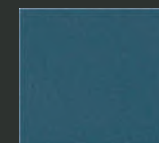
FRECKLE 5024 FR  
BLUEBERRY



454 317  
JADE



SEGU 5013 SE  
LAGOON



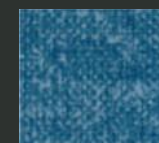
454 346  
COLONIAL BLUE



FRECKLE 5029 FR  
SPINACH



PUKKA 5020 PU  
FENNEL



5012 SE  
PACIFIC