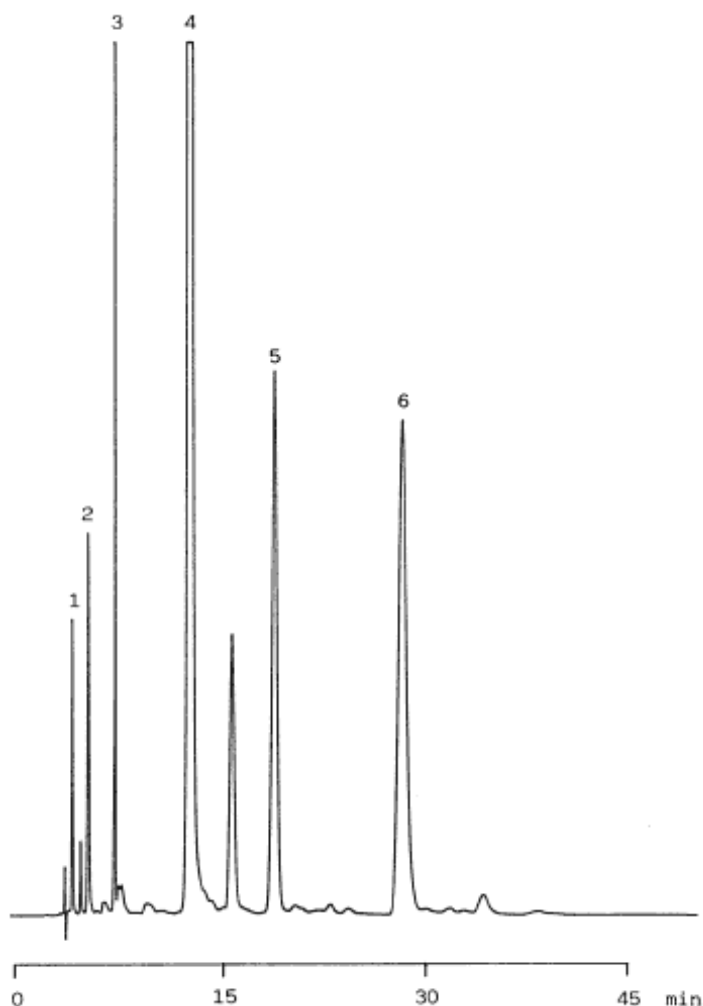


Catechins

Data No. LA217-0000



Column : Inertsil C4

5µm

250 × 4.6 mmI.D.

Column Cat. No. : 5020-01402

Eluent : CH₃CN/CH₃COOC₂H₅/0.1% H₃PO₄=85/20/895

Flow rate : 1.0 mL/min.

Col. Temp. : 40°C

Detection : UV 280 nm

Injection Vol. :

Sample :

Solutes

: 1. Gallic acid

2. (-)-Epigallocatechin

3. (-)-Epicatechin

4. (-)-Epigallocatechin gallate

5. Homocatechol

6. (-)-Epicatechin gallate