

# ULTIFRESH

Anti-Bacterial | Anti-Odor

## Apparels

Vol. 6  
2022/2023



Designed in Singapore



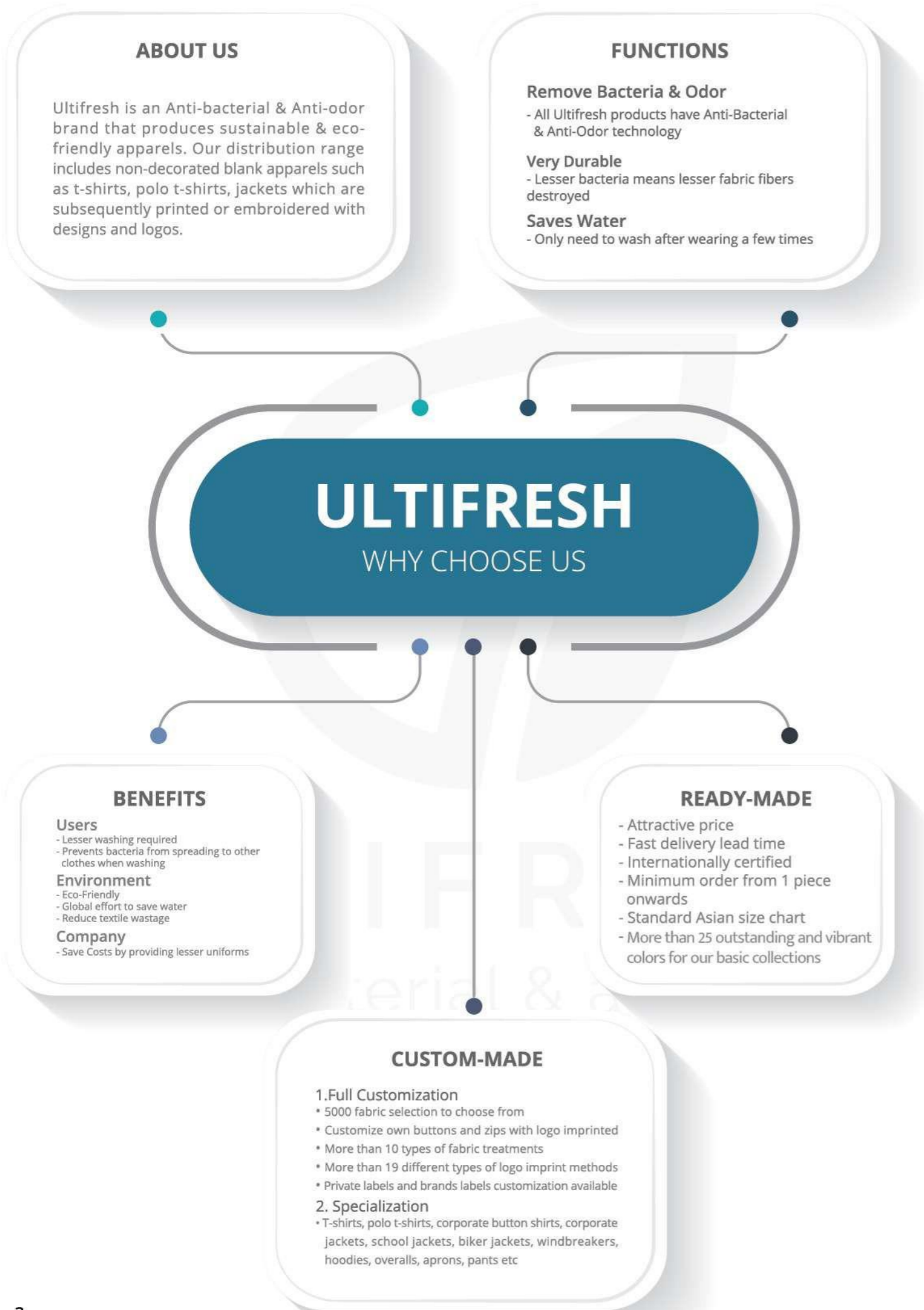
**NEW!**

**UDF0202 : BLACK  
SPORTS SINGLET**

**HOT  
SELLING!**

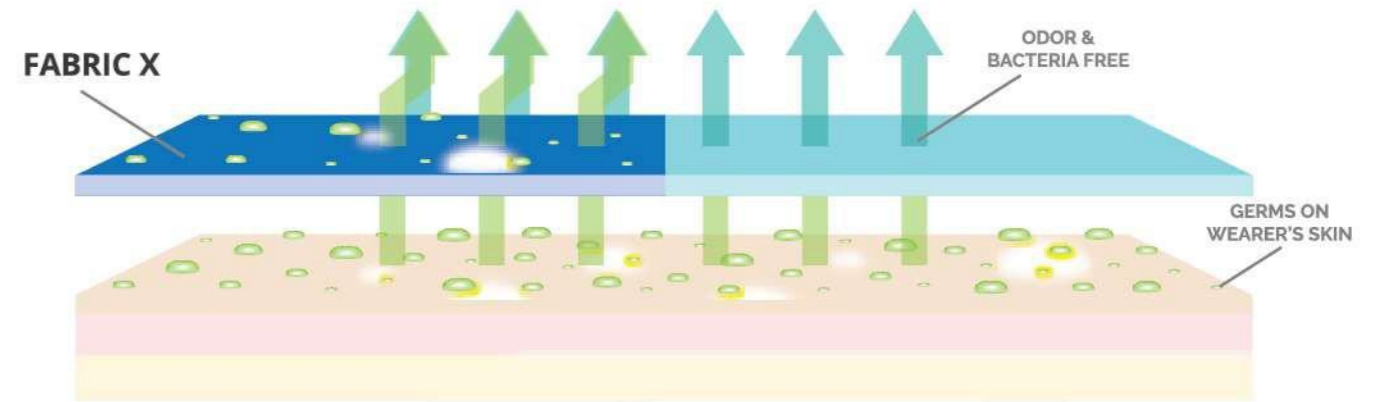


**2022 - 2023**



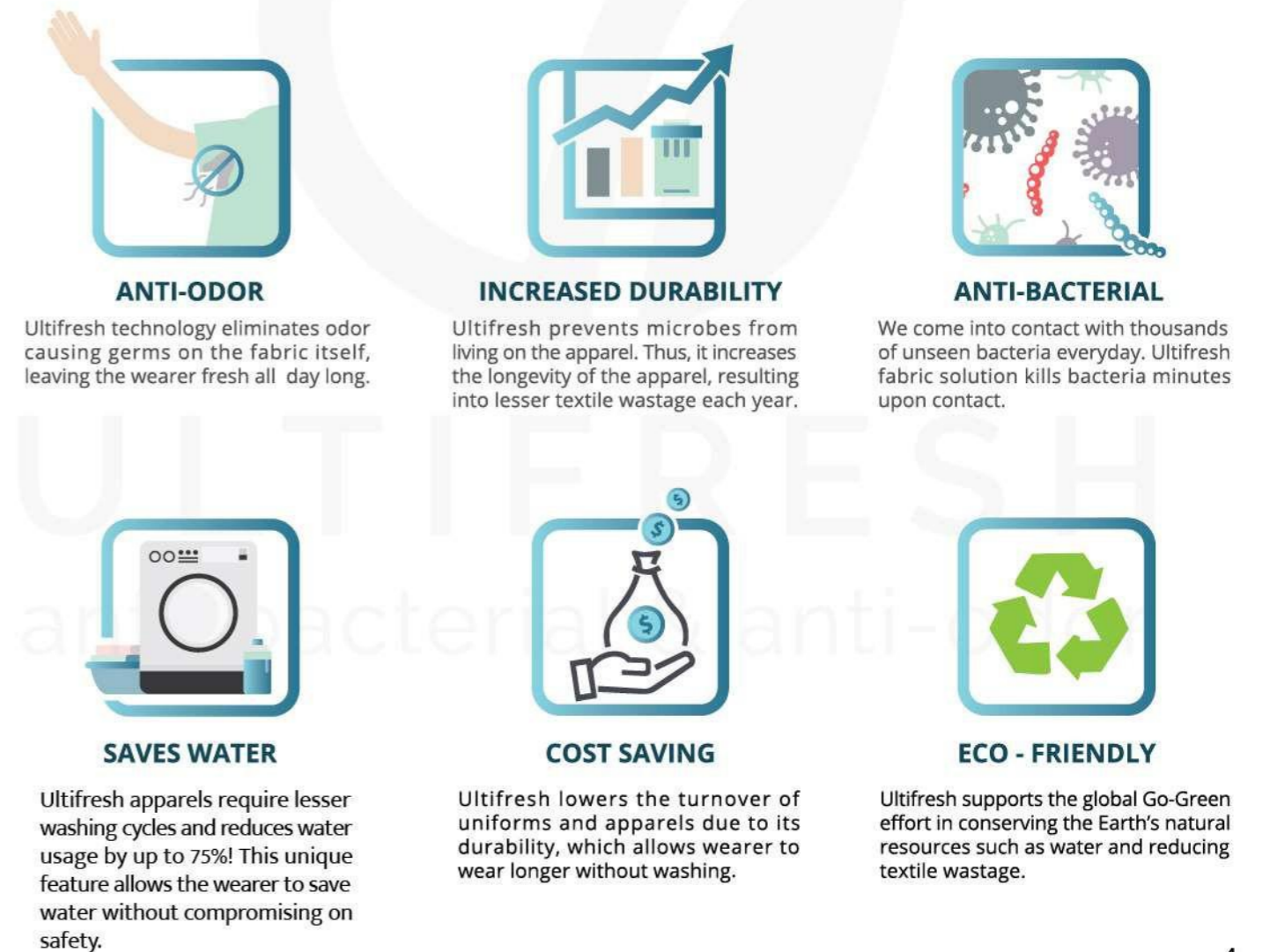
**ABOUT ULTIFRESH**

Ultifresh is a patented fabric technology that kills 99.94% bacteria permanently. The anti-bacterial & anti-odor features can be integrated into any fabric without affecting the outlook and the hand feel of the apparel.



**BENEFITS OF ULTIFRESH**

Ultifresh products are designed with copper's anti-microbial properties, allowing it to self-sterilize. It can also prevent bacteria growth, making it a safer apparel for everyone.



# CONTENT

	Latest Collection	1 - 2
	Why Choose Ultifresh	3
	About Ultifresh	4
<b>01</b>	<b><u>Ultifresh Performance Series</u></b>	
	Crew Neck	9 - 13
	Polo T-Shirt	14 - 16
	Sports Singlet	17 - 18
	Sports Shorts	19 - 20
<b>02</b>	<b><u>Ultifresh Design Series</u></b>	
	Contrast Series	21 - 28
	Oriental Series	29 - 30
	Heather Series	31 - 32
	Hybrid Series	33 - 36
	Double Pique Series	37 - 40
<b>03</b>	<b><u>Ultifresh Outerwear Series</u></b>	
	Bomber Jacket	41 - 42
	Full Moon Zip Up Jacket	43 - 44
	Varsity Jacket	45 - 46
<b>04</b>	<b><u>Ultifresh Reusable Mask Series</u></b>	
	Reusable Mask	47 - 49
	Filter Sheet	50
<b>05</b>	<b><u>Ultifresh Towel Series</u></b>	
	Anti-Bacterial Quick-Dry Towel	51 - 52
<b>06</b>	<b><u>BEAM Series</u></b>	
	Collar Fleece Zip Up Pocket	55 - 56
	Hoodie Without Zip	57 - 58
	Hoodie With Zip	59 - 60
	Jacket In A Bag	61 - 62
	Soft Cardigan	63
	V-Neck Sweater	64
	Cotton Polo T-Shirt	65 - 66
	Cotton Short Sleeve T-Shirt (Unisex)	67 - 69
	Cotton Short Sleeve T-Shirt (Kids)	70
	Polyester Apron	71 - 72
	Long Sleeve Sweat Shirt	73 - 74
	Oxford Corporate Shirt	75 - 76
	Corporate Long Sleeve Button Shirt	77 - 78
	Corporate Short Sleeve Button Shirt	79 - 80
	Corporate Blazer, Pant & Skirt	81 - 84
<b>07</b>	<b><u>Ultifresh Promotional Series</u></b>	
	Performance Series	86 - 87
	Hybrid Series	88
	Oriental Series	89
	Double Pique Series	90
<b>08</b>	<b><u>Ultifresh Customization</u></b>	91 - 92





# ULTIFRESH PERFORMANCE

Ultifresh makes you feel comfortable the way it is meant to be. #feelgood

UDF2202  
Black

**SGS** **intertek**  
Total Quality. Assured.  
TEST REPORT

- 100% Performance Dri-Fit Polyester
- Microfiber Polyester Eyelet

**ULTIFRESH**  
anti-bacterial & anti-odor



Anti Bacterial & Anti-Odor Finishing

Self Fabric Collar



## UDF22 CREW NECK T-SHIRT (KIDS)

Size	Shoulder	Chest	Sleeve	Length
24"	11.5"	25"	4.5"	15.5"
26"	12"	27"	5"	17"
28"	12.5"	29"	5.5"	18.5"
30"	13"	31"	6"	20"
32"	13.5"	33"	6.5"	21.5"

Note : Size may varies +/-5% from the above mentioned chart.

- 170gsm | 5.01oz (UDF2201)
- 160gsm | 4.72oz (THE REST)

### COLORS SELECTION



UDF2201  
PEARL WHITE



UDF2202  
ONYX BLACK



UDF2203  
NAVY BLUE



UDF2204  
CRIMSON RED



UDF2210  
LIGHT BLUE  
**NEW**



UDF2212  
ROYAL BLUE



UDF2213  
ORANGE



UDF2216  
BANANA



UDF2221  
BASIL GREEN  
**NEW**



UDF2223  
ROYAL PURPLE



UDF0126  
TIFFANY BLUE



# ULTIFRESH PERFORMANCE

## UDF01 CREW NECK T-SHIRT (UNISEX)

- 100% Performance Dri-Fit Polyester
- Microfiber Polyester Eyelet
- Anti Bacterial & Anti Odor Finishing
- Self Fabric Collar
- Eco Friendly & Water Saving

Size	Shoulder	Chest	Sleeve	Length
2XS	15"	34"	7"	25"
XS	16"	36"	7.5"	26"
S	17"	38"	8"	27"
M	18"	40"	8.5"	28"
L	19"	42"	9"	29"
XL	20"	44"	9.5"	30"
2XL	21"	46"	10"	31"
3XL	22"	48"	10.5"	32"
5XL	24"	52"	11.5"	33.5"

Note : Size may varies +/-5% from the above mentioned chart.

- 170gsm | 5.01oz (UDF0101)
- 160gsm | 4.72oz (THE REST)

### COLORS SELECTION

UDF0101 PEARL WHITE	UDF0102 ONYX BLACK	UDF0103 NAVY BLUE	UDF0104 CRIMSON RED	UDF0105 MAROON RED	UDF0106 LIGHT GREY	UDF0107 IRON GREY
UDF0108 TURQUOISE	UDF0109 MAGENTA PINK	UDF0110 LIGHT BLUE	UDF0111 ADMIRAL BLUE	UDF0112 ROYAL BLUE	UDF0113 ORANGE	UDF0114 NEON PINK
UDF0116 BANANA	UDF0117 TUSCAN YELLOW	UDF0118 LIME GREEN	UDF0119 EMERALD GREEN	UDF0120 ARMY GREEN	UDF0121 BASIL GREEN	UDF0122 BARLEY BEIGE
UDF0123 ROYAL PURPLE	UDF0124 NEON YELLOW	UDF0125 NEON ORANGE	UDF0126 TIFFANY BLUE <b>NEW</b>	UDF0127 FOREST GREEN <b>NEW</b>	UDF0128 LIGHT PINK <b>NEW</b>	



# ULTIFRESH PERFORMANCE

## UDF26

### CREW NECK LONG SLEEVE T-SHIRT (UNISEX)

Size	Shoulder	Chest	Sleeve	Length
2XS	15"	34"	19"	25"
XS	16"	36"	20"	26"
S	17"	38"	21"	27"
M	18"	40"	22"	28"
L	19"	42"	23"	29"
XL	20"	44"	23.5"	30"
2XL	21"	46"	23.5"	31"
3XL	22"	48"	23.5"	32"
5XL	24"	52"	24.5"	33.5"

Note : Size may varies +/-5% from the above mentioned chart.

• 160gsm | 4.72oz

- 100% Performance Dri-Fit Polyester
- Microfiber Polyester Eyelet
- Eco Friendly & Water Saving

#### COLORS SELECTION



UDF2601  
PEARL WHITE

UDF2602  
ONYX BLACK

UDF2603  
NAVY BLUE

UDF2604  
CRIMSON RED  
**NEW**



UDF2607  
IRON GREY

UDF2610  
LIGHT BLUE  
**NEW**

UDF2612  
ROYAL BLUE  
**NEW**

UDF2613  
ORANGE

UDF2621  
BASIL GREEN



# ULTIFRESH PERFORMANCE

## UDF27

### POLO LONG SLEEVE T-SHIRT (UNISEX)

Size	Shoulder	Chest	Sleeve	Length
2XS	15"	34"	19"	25"
XS	16"	36"	20"	26"
S	17"	38"	21"	27"
M	18"	40"	22"	28"
L	19"	42"	23"	29"
XL	20"	44"	23.5"	30"
2XL	21"	46"	23.5"	31"
3XL	22"	48"	23.5"	32"
5XL	24"	52"	24.5"	33.5"

Note : Size may varies +/-5% from the above mentioned chart.

• 160gsm | 4.72oz

- 100% Performance Dri-Fit Polyester
- Microfiber Polyester Eyelet
- Eco Friendly & Water Saving

#### COLORS SELECTION



UDF2701  
PEARL WHITE

UDF2702  
ONYX BLACK

UDF2703  
NAVY BLUE

UDF2705  
MAROON RED



UDF2707  
IRON GREY

UDF2710  
LIGHT BLUE

UDF2712  
ROYAL BLUE

UDF2713  
ORANGE

UDF2721  
BASIL GREEN





**UDF0509  
MAGENTA PINK**

**UDF0521  
BASIL GREEN**

## UDF05 POLO T-SHIRT (UNISEX)

- 100% Performance Dri-Fit Polyester
- Microfiber Polyester Eyelet
- Anti Bacterial & Anti Odor Finishing
- Self Fabric Collar
- Eco Friendly & Water Saving

- 170gsm | 5.01oz (UDF0501)
- 160gsm | 4.72oz (THE REST)

Size	Shoulder	Chest	Sleeve	Length
2XS	15"	34"	7"	25"
XS	16"	36"	7.5"	26"
S	17"	38"	8"	27"
M	18"	40"	8.5"	28"
L	19"	42"	9"	29"
XL	20"	44"	9.5"	30"
2XL	21"	46"	10"	31"
3XL	22"	48"	10.5"	32"
5XL	24"	52"	11.5"	33.5"

Note : Size may varies +/-5% from the above mentioned chart.

### COLORS SELECTION



NEW



# ULTIFRESH PERFORMANCE

## **NEW** UDF02 SPORTS SINGLET (UNISEX)

- 100% Dri-Fit Polyester
- Interlock Weave
- Moisture Wicking & Sweat Absorbent
- Eco Friendly & Water Saving

Size	Shoulder	Chest	Length
2XS	15.5"	34"	24"
XS	16"	36"	24.5"
S	16.5"	38"	25"
M	17"	40"	25.5"
L	17.5"	41"	26"
XL	18"	42"	26.5"
2XL	18"	44"	27"
3XL	18.5"	46"	28"
5XL	19.5"	50"	29"

Note : Size may varies +/-5% from the above mentioned chart.

### COLORS SELECTION



UDF0201  
PEARL WHITE



UDF0202  
ONYX BLACK



UDF0203  
NAVY BLUE



UDF0204  
CRIMSON RED



UDF0205  
MAROON RED



UDF0207  
IRON GREY



UDF0212  
ROYAL BLUE



UDF0221  
BASIL GREEN



# ULTIFRESH PERFORMANCE

## **NEW** UDF06 SPORTS SHORTS (UNISEX)

- 100% Dri-Fit Polyester
- Interlock Weave
- Moisture Wicking & Sweat Absorbent
- Eco Friendly & Water Saving

• 150gsm | 4.42oz

Size	Waist	Length
2XS	28"	14.5"
XS	29"	15"
S	31"	15.5"
M	32"	16"
L	34"	17"
XL	36"	17.5"
2XL	37"	18"
3XL	38"	19"
5XL	40"	19"

Note : Size may varies +/-5% from the above mentioned chart.

### COLORS SELECTION



UDF0601  
PEARL WHITE



UDF0602  
ONYX BLACK



UDF0603  
NAVY BLUE



Anti Bacterial & Anti-Odor Finishing      Self Fabric Collar



**UDF07**  
**SIDE PANEL CREW NECK**  
**T-SHIRT (UNISEX)**

- 100% Dri-Fit Polyester
- Interlock Weave
- Moisture Wicking & Sweat Absorbent
- Eco Friendly & Water Saving

**ULTIFRESH**  
**CONTRAST**

Size	Shoulder	Chest	Sleeve	Length
2XS	15"	34"	7"	25"
XS	16"	36"	7.5"	26"
S	17"	38"	8"	27"
M	18"	40"	8.5"	28"
L	19"	42"	9"	29"
XL	20"	44"	9.5"	30"
2XL	21"	46"	10"	31"
3XL	22"	48"	10.5"	32"
5XL	24"	52"	11.5"	33.5"

Note : Size may varies +/-5% from the above mentioned chart.

• 160gsm | 4.72oz

**COLORS SELECTION**



UDF0701  
WHITE + ORANGE



UDF0702  
BLACK + WHITE



UDF0703  
NAVY + WHITE



UDF0710  
LIGHT BLUE + WHITE



UDF0723  
PURPLE + WHITE



UDF0733  
BLUE + ORANGE



# ULTIFRESH CONTRAST



## UDP08 VOV PIPING CREW NECK T-SHIRT (UNISEX)

- 100% Dri-Fit Polyester
- Eyelet Weave
- Moisture Wicking & Sweat Absorbent
- Eco Friendly & Water Saving

Size	Chest	Sleeve	Length
2XS	34"	7"	25"
XS	36"	7.5"	26"
S	38"	8"	27"
M	40"	8.5"	28"
L	42"	9"	29"
XL	44"	9.5"	30"
2XL	46"	10"	31"
3XL	48"	10.5"	32"
5XL	52"	11.5"	33.5"

Note : Size may varies +/-5% from the above mentioned chart.

- 170gsm | 5.01oz (UDP0801)
- 160gsm | 4.72oz (THE REST)

### COLORS SELECTION



UDP0801  
WHITE + BLACK



UDP0802  
BLACK + RED



UDP0807  
DARK GREY + WHITE



UDP0813  
ORANGE + BLACK



Anti Bacterial  
& Anti-Odor  
Finishing

Contrast  
Side Panel



## UDF13 CS SASH POLO T-SHIRT (UNISEX)

- 100% Dri-Fit Polyester
- Interlock Weave
- Moisture Wicking & Sweat Absorbent
- Eco Friendly & Water Saving

# ULTIFRESH CONTRAST

Size	Shoulder	Chest	Sleeve	Length
2XS	15"	34"	7"	25"
XS	16"	36"	7.5"	26"
S	17"	38"	8"	27"
M	18"	40"	8.5"	28"
L	19"	42"	9"	29"
XL	20"	44"	9.5"	30"
2XL	21"	46"	10"	31"
3XL	22"	48"	10.5"	32"
5XL	24"	52"	11.5"	33.5"

Note : Size may varies +/-5% from the above mentioned chart.

• 160gsm | 5.64oz

### COLORS SELECTION



UDF1301  
WHITE + GREEN  
+ DARK GREY



UDF1302  
BLACK + RED



UDF1306  
LIGHT GREY +  
WHITE + BLUE



UDF1307  
DARK GREY +  
WHITE + BLUE



Anti Bacterial  
& Anti-Odor  
Finishing

Contrast  
Shoulder Panel



## UDF19 T MAX POLO T-SHIRT (UNISEX)

- 100% Dri-Fit Polyester
- Interlock Weave
- Moisture Wicking & Sweat Absorbent
- Eco Friendly & Water Saving

# ULTIFRESH CONTRAST

Size	Shoulder	Chest	Sleeve	Length
2XS	15"	34"	7"	25"
XS	16"	36"	7.5"	26"
S	17"	38"	8"	27"
M	18"	40"	8.5"	28"
L	19"	42"	9"	29"
XL	20"	44"	9.5"	30"
2XL	21"	46"	10"	31"
3XL	22"	48"	10.5"	32"
5XL	24"	52"	11.5"	33.5"

Note : Size may varies +/-5% from the above mentioned chart.

- 160gsm | 5.64oz

### COLORS SELECTION



UDF1902  
BLACK + RED



UDF1906  
GREY + LIGHT BLUE



UDF1912  
ROYAL BLUE + GREY



UDF1930  
GREEN + WHITE



## UDF20 ZIP UP COLLAR POLO T-SHIRT (UNISEX)

- 100% Dri-Fit Polyester
- Interlock Weave
- Contrast Piping
- Moisture Wicking & Sweat Absorbent
- Eco Friendly & Water Saving

# ULTIFRESH ORIENTAL

Size	Shoulder	Chest	Sleeve	Length
2XS	15"	34"	7"	25"
XS	16"	36"	7.5"	26"
S	17"	38"	8"	27"
M	18"	40"	8.5"	28"
L	19"	42"	9"	29"
XL	20"	44"	9.5"	30"
2XL	21"	46"	10"	31"
3XL	22"	48"	10.5"	32"
5XL	24"	52"	11.5"	33.5"

Note : Size may varies +/-5% from the above mentioned chart.

• 160gsm | 5.64oz

### COLORS SELECTION



UDF2001  
WHITE + YELLOW



UDF2002  
BLACK + RED



UDF2003  
DARK BLUE  
+ ROYAL BLUE



UDF2004  
RED + BLACK



UDF2010  
LIGHT BLUE + WHITE



UDF2013  
ORANGE + WHITE



UDF2027  
WHITE + RED







Anti Bacterial & Anti-Odor Finishing

Edge Cut & Sewn Design



**UDF17**  
**EDGE CREW NECK**  
**T-SHIRT (UNISEX)**

- 47% Performance Polyester
- 47% Melange Dri-Fit +6% Spandex
- Moisture Wicking & Sweat Absorbent
- Eco-Friendly & Water Saving

**ULTIFRESH**  
**HEATHER**

Size	Shoulder	Chest	Sleeve	Length
2XS	15"	34"	7"	25"
XS	16"	36"	7.5"	26"
S	17"	38"	8"	27"
M	18"	40"	8.5"	28"
L	19"	42"	9"	29"
XL	20"	44"	9.5"	30"
2XL	21"	46"	10"	31"
3XL	22"	48"	10.5"	32"
5XL	24"	52"	11.5"	33.5"

Note : Size may varies +/-5% from the above mentioned chart.

**COLORS SELECTION**



UDF1702  
ONYX BLACK



UDF1703  
NAVY BLUE



UDF1706  
LIGHT GREY



UDF1710  
LIGHT BLUE



UDF1712  
ROYAL BLUE



**ULTIFRESH**  
anti-bacterial & anti-odor

**GOLD**  
SERIES AVAILABLE

**Intertek**  
Total Quality. Assured.

**SGS**  
TEST REPORT

Anti Bacterial  
& Anti-Odor  
Finishing

Contrast Collar  
Rib & Pocket



## UCP11 MINIMALIST POLO T-SHIRT (UNISEX)

- 50% Polyester + 50% Cotton
- Outer Polyester + Inner Cotton
- Moisture Wicking & Sweat Absorbent
- Eco-Friendly & Water Saving

# ULTIFRESH HYBRID

Size	Shoulder	Chest	Sleeve	Length
2XS	15"	34"	7"	25"
XS	16"	36"	7.5"	26"
S	17"	38"	8"	27"
M	18"	40"	8.5"	28"
L	19"	42"	9"	29"
XL	20"	44"	9.5"	30"
2XL	21"	46"	10"	31"
3XL	22"	48"	10.5"	32"
5XL	24"	52"	11.5"	33.5"

Note : Size may varies +/-5% from the above mentioned chart.

- 180gsm | 6.35oz

### COLORS SELECTION



UCP1101  
WHITE + BLACK



UCP1102  
BLACK + WHITE



UCP1103  
NAVY + WHITE

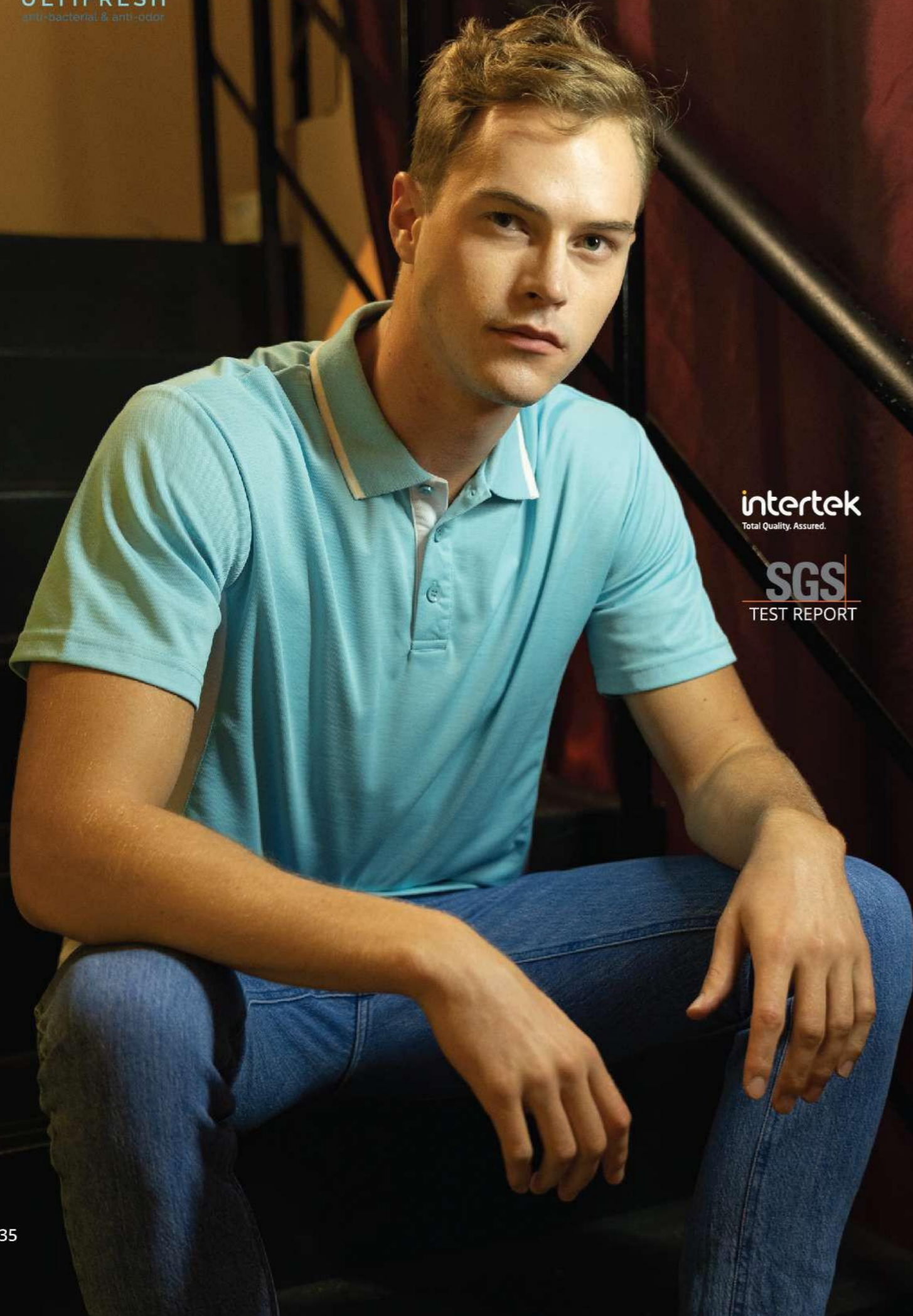


UCP1105  
MAROON + BLACK

**NEW**



UCP1129  
BLACK + GOLD



**intertek**  
Total Quality. Assured.

**SGS**  
TEST REPORT

# ULTIFRESH HYBRID

Anti Bacterial  
& Anti-Odor  
Finishing

Contrast Collar  
Rib & Panels



Size	Shoulder	Chest	Sleeve	Length
2XS	15"	34"	7"	25"
XS	16"	36"	7.5"	26"
S	17"	38"	8"	27"
M	18"	40"	8.5"	28"
L	19"	42"	9"	29"
XL	20"	44"	9.5"	30"
2XL	21"	46"	10"	31"
3XL	22"	48"	10.5"	32"
5XL	24"	52"	11.5"	33.5"

Note : Size may varies +/-5% from the above mentioned chart.

• 190gsm | 6.70oz

## UCP13 CONTRA POLO T-SHIRT (UNISEX)

- 50% Polyester + 50% Cotton
- Outer Polyester + Inner Cotton
- Moisture Wicking & Sweat Absorbent
- Eco-Friendly & Water Saving

### COLORS SELECTION



UCP1301  
WHITE + GREY



UCP1307  
GREY + RED



UCP1310  
LIGHT BLUE + WHITE



UCP1334  
WHITE + GREEN



UCP1335  
WHITE + LIGHT BLUE

# ULTIFRESH DOUBLE PIQUE



## UH27 PREMIUM PLAIN POLO T-SHIRT (UNISEX)

- 60% Polyester + 40% Cotton
- Moisture Wicking & Sweat Absorbent
- Eco Friendly & Water Saving
- 220gsm | 7.76oz



Size	Shoulder	Chest	Sleeve	Length
2XS	15"	34"	7"	25"
XS	16"	36"	7.5"	26"
S	17"	38"	8"	27"
M	18"	40"	8.5"	28"
L	19"	42"	9"	29"
XL	20"	44"	9.5"	30"
2XL	21"	46"	10"	31"
3XL	22"	48"	10.5"	32"
4XL	23"	50"	11"	33"
5XL	24"	52"	11.5"	33.5"

Note : Size may varies +/-5% from the above mentioned chart.

### COLORS SELECTION



UH2701  
WHITE  
**NEW**



UH2702  
BLACK



UH2706  
LIGHT GREY



UH2707  
DARK GREY



UH2712  
NAVY BLUE

# ULTIFRESH DOUBLE PIQUE



## UH02 FD TWIN TIPPED POLO T-SHIRT (UNISEX)

- 60% Polyester + 40% Cotton
- Dual Stripe Design
- Moisture Wicking & Sweat Absorbent
- Eco-Friendly & Water Saving

Size	Shoulder	Chest	Sleeve	Length
2XS	15"	34"	7"	25"
XS	16"	36"	7.5"	26"
S	17"	38"	8"	27"
M	18"	40"	8.5"	28"
L	19"	42"	9"	29"
XL	20"	44"	9.5"	30"
2XL	21"	46"	10"	31"
3XL	22"	48"	10.5"	32"
4XL	23"	50"	11"	33"
5XL	24"	52"	11.5"	33.5"

Note : Size may varies +/-5% from the above mentioned chart.



220gsm | 7.76oz



UH0202  
BLACK



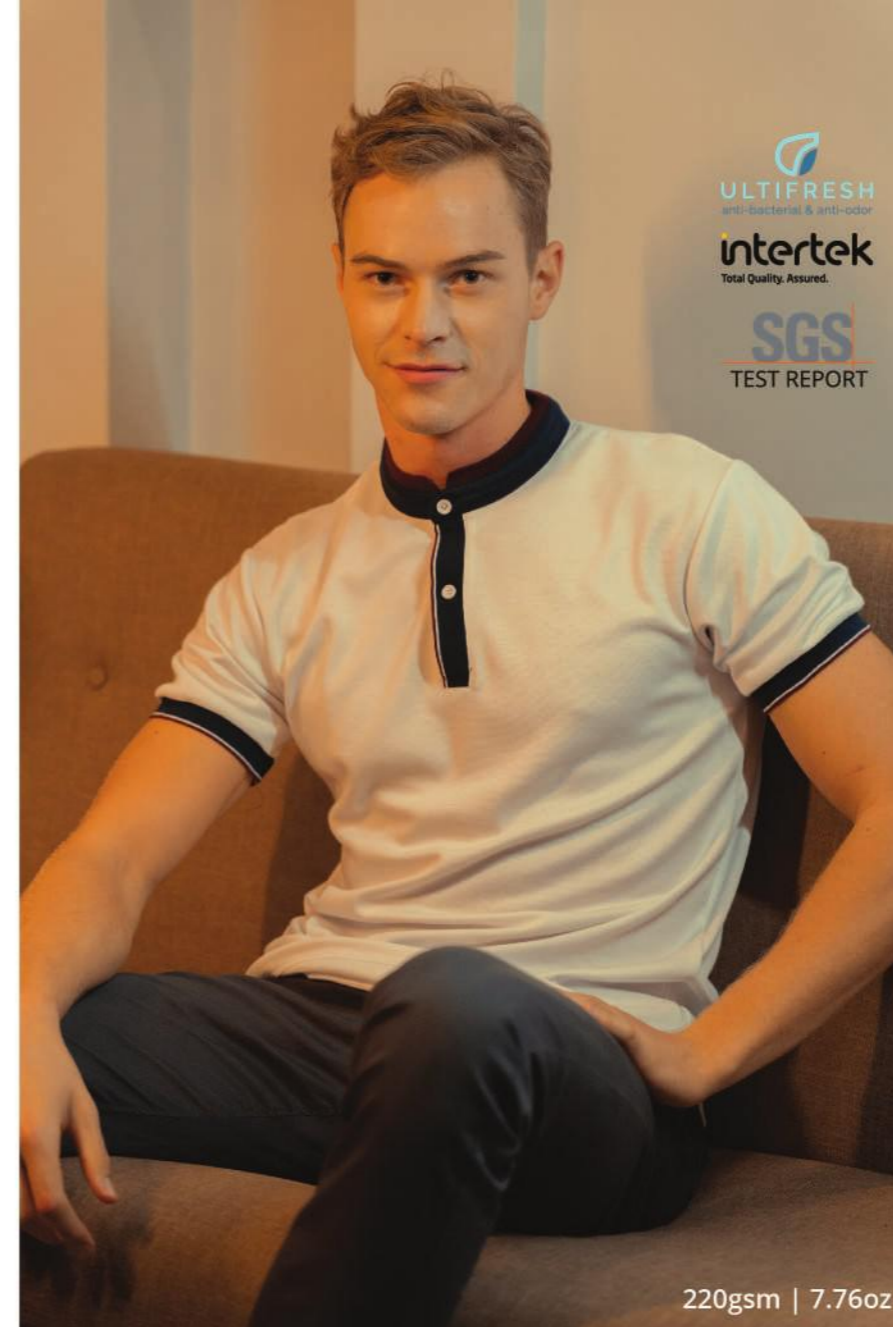
UH0206  
LIGHT GREY



UH0207  
DARK GREY



UH0212  
NAVY BLUE



220gsm | 7.76oz

# ULTIFRESH DOUBLE PIQUE



## UH03 ACE COLLAR POLO T-SHIRT (UNISEX)

- 60% Polyester + 40% Cotton
- Dual Stripe Design
- Moisture Wicking & Sweat Absorbent
- Eco-Friendly & Water Saving

Size	Shoulder	Chest	Sleeve	Length
2XS	15"	34"	7"	25"
XS	16"	36"	7.5"	26"
S	17"	38"	8"	27"
M	18"	40"	8.5"	28"
L	19"	42"	9"	29"
XL	20"	44"	9.5"	30"
2XL	21"	46"	10"	31"
3XL	22"	48"	10.5"	32"
5XL	24"	52"	11.5"	33.5"

Note : Size may varies +/-5% from the above mentioned chart.



UH0301  
WHITE + NAVY + RED



UH0302  
BLACK + GREY + RED



UH0307  
NAVY + GREY + RED



UH0330  
LIGHT GREY + BLACK + RED



# ULTIFRESH BOMBER

Anti Bacterial  
& Anti-Odor  
Finishing

Matching  
Collar Rib



## UVJ01

### ZIP UP JACKET (UNISEX)

- 100% Performance Dry-Fit Polyester
- 100% Polyester Inner Lining
- Moisture Wicking & Sweat Absorbent
- Eco-Friendly & Water Saving

Size	Shoulder	Chest	Sleeve	Length
2XS	16"	37"	21.5"	25"
XS	17"	39"	22.5"	26"
S	18"	41"	23.5"	27"
M	18.5"	43"	24"	28"
L	19"	45"	25"	29"
XL	20"	47"	25.5"	30"
2XL	21"	49"	26.5"	31"
3XL	22"	51"	27"	32"
4XL	23"	53"	27.5"	33"
5XL	24"	55"	28"	34"

Note : Size may varies +/-5% from the above mentioned chart.

- Shell : 55gsm | 1.94oz
- Inner : 160gsm | 5.64oz



## COLORS SELECTION



UVJ0102  
BLACK



UVJ0103  
NAVY



UVJ0105  
MAROON



UVJ0120  
OLIVE



UVJ0128  
ORANGE





Anti Bacterial & Anti-Odor Finishing

Zip Up Collar Design



## UVJ03

### ZIP UP JACKET (UNISEX)

- 92% Polyester & 8% Spandex
- Side Zip Pocket
- Matching Collar Rib
- Moisture Wicking & Sweat Absorbent
- Eco-Friendly & Water Saving

# ULTIFRESH FULL MOON

Size	Shoulder	Chest	Sleeve	Length
2XS	16"	37"	21.5"	25"
XS	17"	39"	22.5"	26"
S	18"	41"	23.5"	27"
M	18.5"	43"	24"	28"
L	19"	45"	25"	29"
XL	20"	47"	25.5"	30"
2XL	21"	48"	26.5"	31"
3XL	22"	51"	27"	32"
4XL	23"	53"	27.5"	33"

Note : Size may varies +/-5% from the above mentioned chart.

• 280gsm | 8.26oz

### COLORS SELECTION



UVJ0302  
BLACK



UVJ0303  
NAVY



UVJ0307  
LIGHT GREY



Anti Bacterial & Anti-Odor Finishing Double Striped Rib (Sleeve, Collar & Hem)



**UVJ05**  
**VARSITY JACKET (UNISEX)**

- 92% Polyester & 8% Spandex
- Color Matching Matt Button
- 2 Front Pockets
- Moisture Wicking & Sweat Absorbent
- Eco-Friendly & Water Saving

**ULTIFRESH**  
**VARSITY JACKET**

Size	Shoulder	Chest	Sleeve	Length
2XS	16"	37"	22"	23.5"
XS	17"	39"	22.5"	24.5"
S	18"	41"	23.5"	25.5"
M	18.5"	43"	24"	26.5"
L	19.5"	45"	25"	27.5"
XL	20"	47"	25.5"	28.5"
2XL	21"	48"	26.5"	29.5"
3XL	22"	51"	27.5"	30.5"
4XL	23"	53"	28"	31.5"

Note : Size may varies +/-5% from the above mentioned chart.  
• 280gsm | 8.26oz

**COLORS SELECTION**



UVJ0502  
BLACK + WHITE



UVJ0503  
NAVY BLUE + WHITE



UVJ0504  
CRIMSON RED + WHITE



UVJ0512  
ROYAL BLUE + WHITE



UVJ0526  
BLACK + RED



intertek  
Total Quality. Assured.

SGS  
TEST REPORT

# REUSABLE MASK SERIES

Feels comfy and trendy with the mask ♡

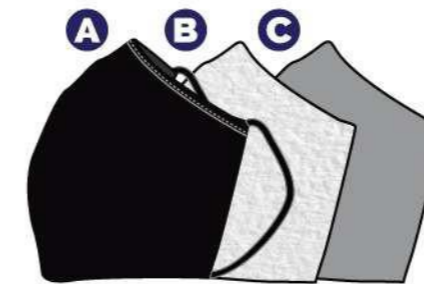
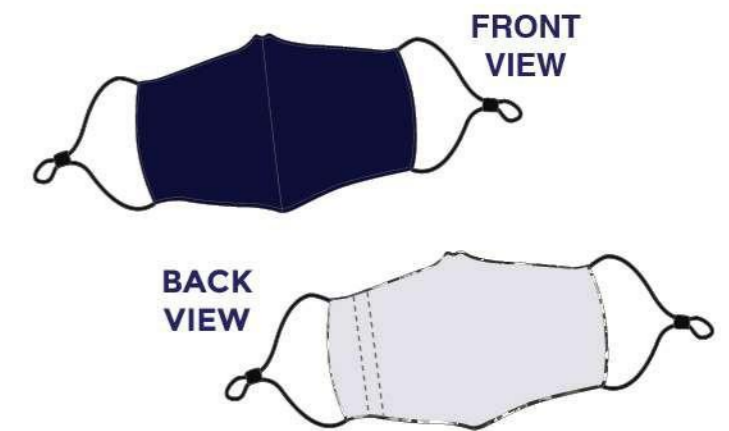


ULTIFRESH  
anti-bacterial & anti-odor

## URM REUSABLE MASK (ADULT)

Size	Width	Height
Adult	7.5" / 19cm	4.75" / 12cm

Note: Size may vary +/-5% from the above mentioned chart.



- A. Outer Layer: 99.94% Anti-Bacterial
- B. Center Layer: > 99% BFE Interchangeable Filter Sheet
- C. Inner Layer: 100% Soft Style Cotton

### COLORS SELECTION



URM02  
BLACK



URM03  
NAVY



URM07  
DARK GREY



## K REUSABLE MASK (KIDS)

Size	Width	Height
Kids	6.5" / 16cm	4.25" / 10.5cm

Note : Size may varies +/-5% from the above mentioned chart.



### COLORS SELECTION



**K0  
BLACK**



**K1  
LIGHT BLUE**



**K2  
LITTLE SHEEPS**



**K3  
ANIMAL WORLD**



**K4  
UNICORN FANTASY**



**K5  
DINO WORLD**

## FILTER SHEET ADULT & KIDS



- High Strength Melt Blown Fabric Filter Sheet
- BFE >99%
- 10pcs Per Pack



**AVFP10  
ADULT FILTER PACK**

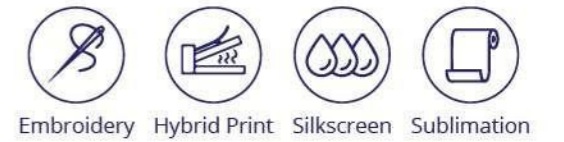


**KVFP10  
KIDS FILTER PACK**

# ANTI-BACTERIAL QUICK-DRY TOWEL



- Anti-Bacterial
- Nylon Chinlon, Polyester
- Compact, Lightweight, Quick-Dry
- Open For Customization Of Logo Webbing



## UBTW BATH TOWEL

Length	Width	Weight
55.1"/140cm	29.5"/75cm	220g

Note : Size may varies +/-5% from the above mentioned chart.



UBTW01 PEARL WHITE



UBTW03 NAVY



UBTW05 MAROON



UBTW06 LIGHT GREY



UBTW11 ADMIRAL BLUE



UBTW46 KELLY GREEN

## USTW SPORTS TOWEL

Length	Width	Weight
25.6"/65cm	13.8"/35cm	40g

Note : Size may varies +/-5% from the above mentioned chart.



USTW01 PEARL WHITE



USTW03 NAVY



USTW05 MAROON



USTW06 LIGHT GREY



USTW11 ADMIRAL BLUE



USTW46 KELLY GREEN





**BEAM**  
QUALITY APPAREL

**BEAM APPAREL PROMOTES  
NEW MINIMALISM**

*A concept which allows our daily wear to be something comfortable, contemporary and be worn in nearly all occasions.*



Anti Fabric Fur Ball Technology



## COLLAR FLEECE

- 100% Polyester Reverse Dual Sided Fleece
- Full Zip Stand Up Collar
- Elastic Sleeve End
- Zip On Both Sided Pocket
- Elastic Cord At Hem For Hem Adjustment



### OWC45

#### ZIP UP JACKET (UNISEX)

Size	Waist	Chest	Sleeve	Length
S	43"	42"	23"	25"
M	44"	44"	24"	26"
L	46"	45"	25"	26"
XL	47"	47"	26"	27"
2XL	49"	48"	26"	28"
3XL	50"	50"	27"	29"

Note : Size may varies +/-5% from the above mentioned chart.

#### COLORS SELECTION



OWC4502  
ONYX BLACK



OWC4504  
CRIMSON RED



OWC4512  
ROYAL BLUE

• 280gsm | 8.20oz

### OWC55

#### ZIP UP JACKET (FEMALE)

Size	Waist	Chest	Sleeve	Length
S	37"	35"	22"	23"
M	39"	36"	23"	24"
L	40"	38"	23"	25"
XL	42"	39"	24"	26"
2XL	43"	41"	24"	26"
3XL	45"	43"	25"	27"

Note : Size may varies +/-5% from the above mentioned chart.

#### COLORS SELECTION



OWC5502  
ONYX BLACK



OWC5504  
CRIMSON RED



OWC5512  
ROYAL BLUE

• 280gsm | 8.20oz



**BEAM**  
QUALITY APPAREL

**HDR30  
HOODIE WITHOUT ZIP**

Size	Shoulder	Chest	Sleeve	Length
2XS	15"	34"	23"	25"
XS	16"	36"	24.5"	25.5"
S	17"	38"	24.5"	26"
M	18"	41"	25"	27.5"
L	18.5"	43"	26"	29"
XL	19"	46"	27"	30"
2XL	20"	48"	27.5"	31"
3XL	21"	50"	28"	32"
4XL	21.5"	52"	29"	33"

Note : Size may varies +/-5% from the above mentioned chart.  
• 220gsm | 6.50oz

Unlined Hood With Matching Drawstring



- Cotton / Polyester Blend
- Kangaroo Pockets With Ribbed Finishing
- Double Needle Cuffs And Waistband For Extra Durability

**COLORS SELECTION**



HDR3001  
PEARL WHITE



HDR3002  
ONYX BLACK



HDR3003  
NAVY BLUE



HDR3004  
CRIMSON RED



HDR3006  
LIGHT GREY



**BEAM**  
QUALITY APPAREL

**HDR40**  
**HOODIE WITH ZIP**

Unlined Hood With Matching Drawstring



Size	Shoulder	Chest	Sleeve	Length
2XS	15"	34"	23"	25"
XS	16"	36"	24.5"	25.5"
S	17"	38"	24.5"	26"
M	18"	41"	25"	27.5"
L	18.5"	43"	26"	29"
XL	19"	46"	27"	30"
2XL	20"	48"	27.5"	31"
3XL	21"	50"	28"	32"
4XL	21.5"	52"	29"	33"

Note : Size may varies +/-5% from the above mentioned chart.

• 220gsm | 6.50oz

- Cotton / Polyester Blend
- Pouch Pockets
- Matching Zip
- Double Needle Cuffs And Waistband For Extra Durability

**COLORS SELECTION**



HDR4001  
PEARL WHITE



HDR4002  
ONYX BLACK



HDR4003  
NAVY BLUE



HDR4004  
CRIMSON RED



HDR4006  
LIGHT GREY



**BEAM**  
QUALITY APPAREL

**AKJ01**

**LIGHTWEIGHT MICROFIBER JACKET IN A BAG (PACKABLE)**



*Unique printed patterns*

- 100% Light Weight Polyester
- UPF40 + Coating
- Fully Sewn Built in Hoodie Design
- Packable Drawstring Bag Included
- Come with Unique Pattern Prints in Front Panel

Size	Shoulder	Chest	Sleeve
S	40"	27.5"	25"
M	41"	28.5"	26"
L	43"	29"	26.5"
XL	44"	30"	27"
2XL	46"	31"	28"
3XL	48"	31.5"	29"
4XL	49"	32.5"	29.5"

Note : Size may varies +/-5% from the above mentioned chart.

**COLORS SELECTION**



AKJ0101  
BLACK



AKJ0102  
ROYAL BLUE



AKJ0103  
LIME GREEN



AKJ0104  
ORANGE



AKJ0105  
YELLOW



AKJ0106  
SKY BLUE



AKJ0107  
RED



AKJ0108  
BRIGHT PINK



AKJ0110  
PINK



AKJ0111  
WHITE





**ARC10**  
CLASSIC SOFT  
CARDIGAN (UNISEX)

Size	Shoulder	Chest	Sleeve	Length
S	16"	38"	24"	25.5"
M	16.5"	40"	24"	26"
L	17"	42"	24"	27"
XL	17.5"	44"	25"	27.5"
2XL	18"	46"	25"	28"
3XL	18.5"	48"	25"	28.5"
5XL	19.5"	52"	26"	30"

Note : Size may varies +/-5% from the above mentioned chart.



**ARS10**  
CLASSIC V-NECK  
SWEATER (UNISEX)

Size	Shoulder	Chest	Sleeve	Length
S	17"	36"	23"	25
M	18"	38"	25"	25.5"
L	19"	40"	25"	26"
XL	20"	41"	25"	27"
2XL	21"	42.5"	26"	28"
3XL	22"	44"	26"	29"
5XL	24"	45.5"	26.5"	30"

Note : Size may varies +/-5% from the above mentioned chart.



ARC1001  
DARK GREY



ARC1002  
NAVY BLUE



ARC1003  
GREEN



ARC1004  
BLACK



ARC1005  
BROWN



ARC1006  
MAROON



ARS1001  
DARK GREY



ARS1002  
NAVY BLUE



ARS1003  
GREEN



ARS1004  
BLACK



ARS1005  
BROWN



ARS1006  
MAROON



**BEAM**  
QUALITY APPAREL

**UPT01**  
**POLO T-SHIRT (UNISEX)**

- 100% Premium "LACOSTE" Fabric
- Matching Color Button
- Matching Ribbed Collar & Cuffs
- Available In 15 Colors
- XS-3XL Size

Size	Shoulder	Chest	Sleeve	Length
XS	15"	36"	8"	26"
S	16"	38"	8.5"	27"
M	18"	40"	8.5"	28"
L	18"	41"	9"	29"
XL	19"	44"	9"	30"
2XL	20"	44"	9.5"	30.5"
3XL	21"	48"	9.5"	31"

Note : Size may varies +/-5% from the above mentioned chart.

**COLORS SELECTION**



UPT01-01  
WHITE



UPT01-02  
BLACK  
(READY STOCK)



UPT01-03  
NAVY BLUE



UPT01-04  
RED



UPT01-05  
MAROON



UPT01-11  
ROYAL BLUE



UPT01-13  
ORANGE



UPT01-17  
YELLOW



UPT01-18  
LIME GREEN



UPT01-23  
PURPLE



UPT01-40  
BOTTLE GREEN



UPT01-44  
AQUA



UPT01-45  
FUSCHIA



UPT01-46  
KELLY GREEN



UPT01-47  
GREY MELANGE



**BEAM**  
QUALITY APPAREL

**USS01**  
**SHORT SLEEVE**  
**T-SHIRT (UNISEX)**

- 100% Premium Cotton (Unisex)
- Matching Rib Collar
- Available In 18 Colors
- XS-5XL Size



Size	Shoulder	Chest	Sleeve	Length
XS	15"	36"	7"	26"
S	17"	38"	7.5"	27"
M	18"	40"	7.5"	28"
L	19"	42"	8"	29"
XL	20"	44"	8"	30"
2XL	20.5"	46"	8.5"	31"
3XL	22"	48"	8.5"	31.5"
4XL	23"	50"	9"	32"
5XL	24"	52"	9.5"	33"

Note : Size may varies +/-5% from the above mentioned chart.

**COLORS SELECTION**



USS01-01  
WHITE



USS01-02  
BLACK  
(READY STOCK)



USS01-03  
NAVY BLUE



USS01-04  
RED



USS01-05  
MAROON



USS01-12  
ROYAL BLUE



USS01-13  
ORANGE



USS01-17  
YELLOW



USS01-18  
LIME GREEN



USS01-23  
PURPLE



USS01-39  
INDIGO BLUE



USS01-40  
BOTTLE GREEN



USS01-41  
OLIVE



USS01-42  
SAND



USS01-43  
STONE



USS01-44  
AQUA



USS01-45  
FUSCHIA



USS01-46  
KELLY GREEN



**BEAM**  
QUALITY APPAREL

**USSG01**  
**200GSM SHORT SLEEVE T-SHIRT (UNISEX)**

Size	Shoulder	Chest	Sleeve	Length
XS	15"	36"	7"	26"
S	17"	38"	7.5"	27"
M	18"	40"	7.5"	28"
L	19"	42"	8"	29"
XL	20"	44"	8"	30"
2XL	20.5"	46"	8.5"	31"
3XL	22"	48"	8.5"	31.5"
4XL	23"	50"	9"	32"
5XL	24"	52"	9.5"	33"

Note : Size may varies +/-5% from the above mentioned chart.



**BEAM**  
QUALITY APPAREL

**KSS01**  
**SHORT SLEEVE T-SHIRT (KIDS)**

- 100% Premium Cotton
- Matching Ribbed Collar
- Available in 15 Colors
- 2/4 years - 13/14 years

• 170gsm-175gsm



Size	Shoulder	Chest	Sleeve	Length
2-4	11"	24"	5"	17"
5-6	12"	26"	6"	18"
7-8	13"	28"	6.5"	20"
9-10	15"	30"	6.5"	21"
11-12	15"	34"	7"	23"
13-14	17"	36"	7"	24"

Note : Size may varies +/-5% from the above mentioned chart.

- 100% Premium Cotton (Unisex)
- Matching Rib Collar
- XS-5XL Size

**COLORS SELECTION**



USSG01-01  
WHITE



USSG01-02  
BLACK  
(READY STOCK)



**COLORS SELECTION**



KSS01-01  
WHITE



KSS01-02  
BLACK



KSS01-03  
NAVY BLUE



KSS01-05  
MAROON



KSS01-12  
ROYAL BLUE



KSS01-13  
ORANGE



KSS01-17  
YELLOW



KSS01-18  
LIME GREEN



KSS01-23  
PURPLE



KSS01-39  
INDIGO BLUE



KSS01-40  
BOTTLE GREEN



KSS01-41  
OLIVE



KSS01-44  
AQUA



KSS01-45  
FUSCHIA



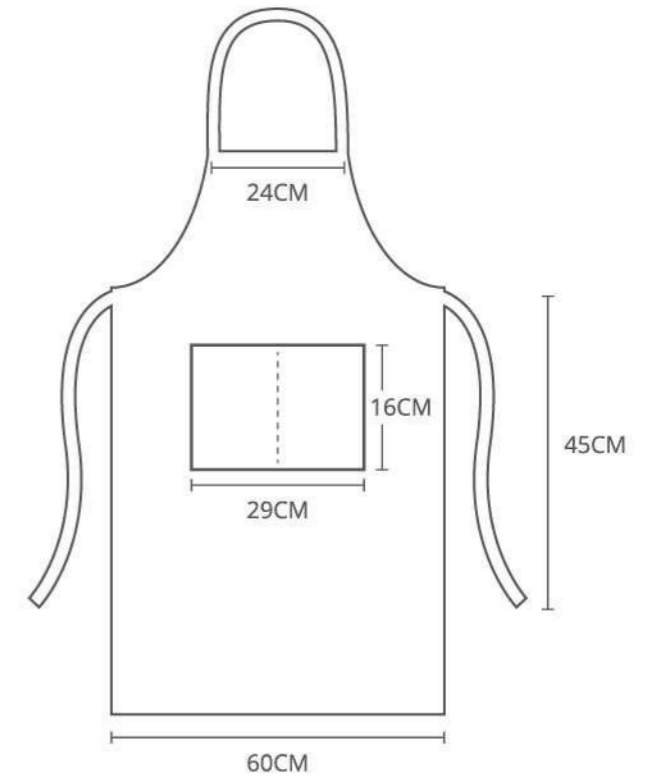
KSS01-46  
KELLY GREEN



**BEAM**  
QUALITY APPAREL

**APR10**  
**APRON**  
**100% POLYESTER**

- 100% Polyester
- Back Lace Design
- Front Pockets
- Customizable
- Available In 12 Colors
- Free Size
- All Ready Stock



Note: dimension may vary +/- 5% from the above mentioned chart.

**COLORS SELECTION**





**BEAM**  
QUALITY APPAREL

**RGN21**  
**LONG SLEEVE SWEAT SHIRT (UNISEX)**



Size	Shoulder	Chest	Length
2XS	15"	34"	25"
XS	16"	36"	26"
S	17"	39"	26"
M	18"	41"	28"
L	19"	43"	29"
XL	19"	46"	30"
2XL	20"	48"	31"
3XL	21"	50"	32"
4XL	22"	53"	33"

- Cotton / Polyester Blend
- Crew Neck, Long Sleeve Design
- 6 Available Colors
- Double Needle Cuffs and Waistband For Extra Durability

Note : Size may varies +/-5% from the above mentioned chart.

• 220gsm | 6.50oz

**COLORS SELECTION**



RGN2101  
PEARL WHITE



RGN2102  
ONYX BLACK



RGN2103  
NAVY BLUE



RGN2104  
CRIMSON RED



RGN2106  
LIGHT GREY



RGN2138  
LIGHT PINK



**BEAM**  
QUALITY APPAREL

**FTL3**  
**OXFORD CORPORATE**  
**SHIRT (UNISEX)**



Size	Shoulder	Chest	Sleeve	Length
S (38)	16.5"	37"	21.5"	27"
M (39)	17"	39"	22"	28.5"
L (40)	17"	40"	22"	29"
XL (41)	17.5"	42"	22"	30"
2XL (42)	18"	44"	22.5"	29.5"
3XL (43)	19"	46"	23"	30"
4XL (44)	19"	47"	23'	30"

- Made of 60% Cotton + 40% Oxford Fabric
- Hidden Buttons Behind Collar For An
- Alternate Look
- One Chest Pocket On The Left
- Full Placket Buttons

Note : Size may varies +/-5% from the above mentioned chart.

**COLORS SELECTION**



**FTL301**  
**PEARL WHITE**



**FTL302**  
**ONYX BLACK**



**FTL303**  
**NAVY BLUE**



**FTL306**  
**LIGHT GREY**



**FTL338**  
**LIGHT PINK**



**FTL340**  
**LAKE BLUE**



**BEAM**  
QUALITY APPAREL

**ACS11**

**HIGH QUALITY CORPORATE  
LONG SLEEVE SHIRT**

- 40% Cotton + 60% Polyester Fabric
- Full Placket Buttons
- Moisture Wicking Technology
- Poplin Finishing
- V-Edge Collar Design With Iron Fusing

**UNISEX**

Size	Shoulder	Chest	Sleeve	Length
S (38)	16.5"	37"	23"	28"
M (39)	17"	38"	23"	28"
L (40)	18"	39"	23.5"	28.5"
XL (41)	18"	41"	24"	29"
2XL (42)	18.5"	43"	24"	30"
3XL (43)	19.5"	44"	24.5"	31"
4XL (44)	20.5"	47"	25'	32"

Note : Size may varies +/-5% from the above mentioned chart.

- 220gsm | 6.50oz



**BEAM**  
QUALITY APPAREL

**FTL 1**

**HIGH QUALITY CORPORATE  
LONG SLEEVE SHIRT**

**FEMALE**

Size	Shoulder	Chest	Sleeve	Length
XS (35)	14.5"	35"	21"	22.5"
S (36)	15"	37"	21"	23"
M (37)	15.5"	38"	21.5"	23.5"
L (38)	16"	40"	21.5"	24"
XL (39)	16"	41"	22"	25"
2XL (40)	16.5"	42"	22.5"	25.5"
3XL (41)	17"	44"	23"	26"
5XL (42)	17.5"	47"	23.5'	27"

Note : Size may varies +/-5% from the above mentioned chart.

**COLORS SELECTION**



ACS110  
MAROON RED



ACS111  
BLACK



ACS112  
LIGHT PINK



77 ACS113  
LIGHT BLUE



ACS114  
WHITE



**COLORS SELECTION**



FTL101  
WHITE



FTL110  
LIGHT BLUE



FTL138  
PINK





**TCS1**

**HIGH QUALITY CORPORATE  
SHORT SLEEVE SHIRT**

- 40% Cotton + 60% Polyester Fabric
- Full Placket Buttons
- Moisture Wicking Technology
- Poplin Finishing
- V-Edge Collar Design With Iron Fusing

**UNISEX**

Size	Shoulder	Chest	Sleeve	Length
S (38)	16.5"	37"	8"	28"
M (39)	17"	38"	8"	28"
L (40)	18"	39"	8.5"	28.5"
XL (41)	18"	41"	8.5"	29"
2XL (42)	18.5"	43"	9"	30"
3XL (43)	19.5"	44"	9"	31"
4XL (44)	20.5"	47"	9.5"	32"

Note : Size may varies +/-5% from the above mentioned chart.

- 220gsm | 6.50oz



**FTS 1**

**HIGH QUALITY CORPORATE  
SHORT SLEEVE SHIRT**

**FEMALE**

Size	Shoulder	Chest	Sleeve	Length
XSC(35)	14.5"	35"	7.5"	22.5"
S (36)	15"	37"	7.5"	23"
M (37)	15.5"	38"	7.5"	23.5"
L (38)	16"	40"	8"	24"
XL (39)	16"	41"	8"	25"
2XL (40)	16.5"	42"	8.5"	25.5"
3XL (41)	17"	44"	8.5"	26"
5XL (42)	17.5"	47"	9"	27"

Note : Size may varies +/-5% from the above mentioned chart.



**COLORS SELECTION**



TCS101  
WHITE



TCS102  
BLACK



TCS110  
LIGHT BLUE



**COLORS SELECTION**



FTS101  
WHITE



FTS102  
BLACK



FTS110  
LIGHT BLUE





CBM3502  
BLACK

CBM3503  
NAVY BLUE

- 65% Polyester 35% Rayon
- (Shell) 100% Polyester
- 3 Pocket Flat Collar Design
- Full Suit Available
- Dual Buttons

**BEAM**  
QUALITY APPAREL

**PREMIUM**

**2 BUTTON FITTED BLAZER  
(MALE CUTTING)**

**JACKET SIZE CHART**

Size	Shoulder	Chest	Sleeve	Length
165/S	16.75"	37.8"	23.2"	25.6"
170/M	17.2"	39.4"	23.8"	26.4"
175/L	17.7"	41"	24.4"	27"
180/XL	18.2"	42.5"	24.8"	28"
185/2XL	18.6"	44"	25.4"	28.7"
190/3XL	19"	45.6"	26"	29.5"
195/4XL	19.6"	47.2"	25.5'	30.3"

Note : Size may varies +/-5% from the above mentioned chart.



PAT0102  
BLACK

PAT0103  
NAVY BLUE

**PANT SIZE CHART**

Size	Waist	Hip	Length
165/S	29"	36.2"	39.3"
170/M	30"	37.4"	40"
175/L	31.5"	38.5"	41"
180/XL	32.6"	40"	41.7"
185/2XL	34"	41.3"	42.5"
190/3XL	35.8"	43"	42.5"
195/4XL	37.4"	44.5"	42.5"

Note : Size may varies +/-5% from the above mentioned chart.



Classic Button Down  
Back Pocket

Elastic Waist Band  
Design



CBM2502  
BLACK

CBM2503  
NAVY BLUE

- 65% Polyester 35% Rayon
- (Shell) 100% Polyester
- 3 Pocket Flat Collar Design
- Full Suit Available
- Dual Buttons

**BEAM**  
QUALITY APPAREL

**PREMIUM**

**2 BUTTON FITTED BLAZER  
(FEMALE CUTTING)**

**JACKET SIZE CHART**

Size	Shoulder	Chest	Sleeve	Length
155/XS	14"	33"	22"	21.8"
160/S	14.5"	34.6"	22"	21.8"
165/M	15"	36"	22.4"	22.6"
170/L	15.3"	37.8"	22.8"	23.4"
175/XL	15.7"	39.4"	23.2"	24.2"
180/2XL	16"	41"	23.6"	25"
185/3XL	16.5"	42.5"	23.6"	25"
190/4XL	17"	44"	23.6"	25"

Note : Size may varies +/-5% from the above mentioned chart.



SKT0202  
BLACK

SKT0203  
NAVY BLUE

**PANT SIZE CHART**

Size	Waist	Hip	Length
155/XS	24.8"	33"	18"
160/S	26.3"	34.6"	18.3"
165/M	27.5"	36.2"	18.5"
170/L	29"	37.8"	19.7"
175/XL	30"	39.3"	19"
180/2XL	32.2"	41"	19"
185/3XL	33.8"	42.5"	19.3"
190/4XL	35.4"	44"	19.3"

Note : Size may varies +/-5% from the above mentioned chart.



Classic Button Down  
Back Pocket



Elastic Waist Band  
Design



# PROMOTIONAL SERIES

LIMITED SIZES & QUANTITY

# ULTIFRESH PERFORMANCE

Matching Collar Rib      Anti Bacterial & Anti-Odor Finishing



## UDF12 CREW NECK T-SHIRT (FEMALE)

Size	Shoulder	Chest	Sleeve	Length
S	13"	32"	6"	22.5"
M	14"	34"	6.5"	23.5"
L	15"	36"	6.5"	24.5"
XL	16"	38"	7"	25.5"
2XL	17"	40"	7"	26.5"

Note : Size may varies +/-5% from the above mentioned chart.

- 170gsm | 5.01oz (UDF1201)
- 160gsm | 4.72oz (THE REST)

- 100% Performance Dri-Fit Polyester
- Microfiber Polyester Eyelet
- Eco-Friendly & Water Saving



### COLORS SELECTION

			
UDF1201 PEARL WHITE	UDF1202 ONYX BLACK	UDF1203 NAVY BLUE	UDF1204 CRIMSON RED
			
UDF1212 ROYAL BLUE	UDF1213 ORANGE	UDF1216 BANANA	UDF1223 ROYAL PURPLE



# ULTIFRESH PERFORMANCE



## UDF18 POLO T-SHIRT (FEMALE)

Size	Shoulder	Chest	Sleeve	Length
S	13"	32"	6"	22.5"
M	14"	34"	6.5"	23.5"
L	15"	36"	6.5"	24.5"
XL	16"	38"	7"	25.5"
2XL	17"	40"	7"	26.5"

Note : Size may varies +/-5% from the above mentioned chart.

• 160gsm | 4.72oz (THE REST)



- 100% Performance Dri-Fit Polyester
- Microfiber Polyester Eyelet
- Eco-Friendly & Water Saving

### COLORS SELECTION



UDF1812  
ROYAL BLUE



UDF1813  
ORANGE



UDF1816  
BANANA



UDF1823  
ROYAL PURPLE



# ULTIFRESH HYBRID

Size	Shoulder	Chest	Sleeve	Length
S	13"	32"	6"	22.5"
M	14"	34"	6.5"	23.5"
L	15"	36"	6.5"	24.5"
XL	16"	38"	7"	25.5"

Note : Size may varies +/-5% from the above mentioned chart.

• 190gsm | 6.70oz

## UCP23

### CONTRA POLO T-SHIRT (FEMALE)

- 50% Polyester + 50% Cotton
- Outer Polyester + Inner Cotton

- Moisture Wicking & Sweat Absorbent
- Eco Friendly & Water Saving

### COLORS SELECTION



UCP2301  
WHITE + GREY



UCP2307  
GREY + RED



UCP2310  
LIGHT BLUE + WHITE



UCP2334  
WHITE + GREEN



UCP2335  
WHITE + LIGHT BLUE

Anti Bacterial  
& Anti-Odor  
Finishing

Zip Up  
Collar Design



## UDF28 ZIP UP COLLAR POLO T-SHIRT (FEMALE)

# ULTIFRESH ORIENTAL

Size	Shoulder	Chest	Sleeve	Length
S	13"	32"	6"	22.5"
M	14"	34"	6.5"	23.5"
L	15"	36"	6.5"	24.5"
XL	16"	38"	7"	25.5"

Note : Size may varies +/-5% from the above mentioned chart.

- 190gsm | 6.70oz
- 100% Dri-Fit Polyester
- Interlock Weave
- Contrast Piping
- Moisture Wicking & Sweat Absorbent
- Eco Friendly & Water Saving

Anti Bacterial  
& Anti-Odor  
Finishing

Double  
Pique Knit



# ULTIFRESH DOUBLE PIQUE

## UH12 FD TWIN TIPPED POLO T-SHIRT (FEMALE)

Size	Shoulder	Chest	Sleeve	Length
S	13"	32"	6"	22.5"
M	14"	34"	6.5"	23.5"
L	15"	36"	6.5"	24.5"
XL	16"	38"	7"	25.5"

Note : Size may varies +/-5% from the above mentioned chart.

- 60% Polyester + 40% Cotton
- Dual Stripe Design

- Moisture Wicking & Sweat Absorbent
- Eco-Friendly & Water Saving

### COLORS SELECTION



UDF2801  
WHITE + YELLOW



UDF2802  
BLACK + RED



UDF2804  
RED + BLACK



UDF2810  
LIGHT BLUE + WHITE



UDF2813  
ORANGE + WHITE



UDF2827  
WHITE + RED



UH1202  
BLACK



UH1206  
LIGHT GREY



UH1207  
DARK GREY



UH1212  
NAVY BLUE

### COLORS SELECTION



**ULTIFRESH CUSTOMIZATION**

Create your very own anti-bacterial & anti-odor apparels from scratch with 8-steps customization process! A perfect alternative for brands or institution who wish to incorporate our unique technology to their new or existing apparels design.



# ULTIFRESH.NET

we deliver fresh apparels

Follow Us @:



Website



Facebook



Instagram

Visit Us @:

<https://www.ultifresh.net>