



ANNUAL REPORT

—
2025





Our Mission

We partner with community to champion thriving and equitable parks and public spaces.

Rebecca Bear over Occidental Promenade in November 2025.



Dear friends and supporters,

As I reflect on my fifth year as the President and CEO at Seattle Parks Foundation, I am struck by the resiliency and dedication of this network. We partner with community to champion thriving and equitable parks and public spaces - and 2025 challenged us all with direct threats to the funding that many of our projects depend on.

In 2025, our network of 130+ community partners celebrated groundbreakings on two major park projects, and four partner projects came to completion after years of advocacy, community-centered design, planning, and construction (more on pp. 4-5). These projects only materialized thanks to the dedication of those involved. We provided backbone resources, technical expertise, and collaborative strategy to ensure we made a measurable difference in every project, lightening the load of the volunteers who are at the heart of this work. Our collective impact makes this region stronger and more beautiful.

We have refined our strategic plan to focus on fostering inclusive communities and growing urban resilience throughout Seattle and King County. Our Tree Equity Network participated in volunteer days at seven restoration sites, planting native trees and plants where they're needed most, in addition to launching a new granting program in support of tree canopy and environmental youth engagement projects throughout the region (more on pp. 6-7).

In the summer of 2026, Seattle will welcome the world for the FIFA World Cup. Seattle Parks Foundation has focused our efforts on ensuring the places of highest visitation will exemplify the best of our city. By June 2026, we will complete improvements to Westlake Park and test new People Streets concepts on Occidental Promenade next to the stadiums. As we look to the future, I hope you enjoy the renderings helping to visualize a Greener Vision for Seattle, created by MxM Landscape Architecture (pp. 8-9). This bold vision requires shared advocacy and investment to ensure Seattle remains a world-class nature-based city.

Finally, as the saying goes: many hands make light work. It is only through the many hands of our community partners, our donors, and our staff that the mission of the Seattle Parks Foundation continues to succeed. We are deeply grateful for all you do.

In partnership,

Our Vision

That people feel welcomed and invested in our parks and public spaces, leading to healthy, sustainable, and equitable communities.

GRAND OPENINGS & GROUNDBREAKINGS

Seattle Parks Foundation celebrated a multitude of anticipated milestones in 2025, and we ended the year



Grand Opening of North Loop of the Cheasty Mountain Bike and Pedestrian Trails. Photo by Elizar Mercado.



Grand Opening of Puma Playfield at Concord International Elementary School. Photo by Elizar Mercado.

Grand Openings

Cayton Corner Park

In July, Cayton Corner Park opened and became the newest public amenity in the Central District. This gathering space includes a small lawn, accessible pathway, stairway, picnic tables, and handrails. The park is named after early Black leaders, publishers, and community builders Horace Cayton Sr. and Susie Revels Cayton, and honors the neighborhood's history of resilience, diversity, and creativity.

Georgetown to South Park Trail

On September 28, the Georgetown to South Park Trail project was completed following decades of community partnership. In 2016, Seattle Parks Foundation supported our partners Duwamish Valley Safe Streets and Georgetown Open Space Committee during the early stages of the planning process, as they were rallying for

community support and began to form their vision for the trail. We are thrilled that this vital connection is now open!

Cheasty North Loop

In the Rainier Valley, we celebrated another completed trail project on October 25. Led by our partners with Friends of Cheasty Greenspace at Mountain View, the Cheasty North Loop Trail is Seattle's first forested mountain biking and pedestrian trail pilot project.

Puma Playfield at Concord International Elementary School

Puma Playfield's grand opening at Concord International Elementary School took place on October 29. Located in the historically under-resourced neighborhood of South Park, the completion of Puma Playfield is a breakthrough achievement for the neighborhood, whose residents have limited access to safe public spaces for kids to play and people to gather.

with four new parks, public spaces, and trails, as well as two historic groundbreakings.



Garfield Super Block ceremonial groundbreaking. Photo by Shava Lawson.

“We’re thrilled with the level of support SPF has given us. This simply would not have happened without their guidance and support.”

Robin Maxwell, Concord International Elementary PTA

Groundbreakings

Garfield Super Block

The ceremonial groundbreaking of Garfield Super Block on June 11 was the first of two major project milestones in 2025. Over 20 years after the original Super Block Plan was approved by the City of Seattle, community members, project supporters, and city officials showed up to commemorate the beginning of the project’s next major phase. We will continue to support Garfield Super Block

alongside our project partners Parkour Visions, Seattle Parks and Recreation, and Seattle Neighborhood Greenways.

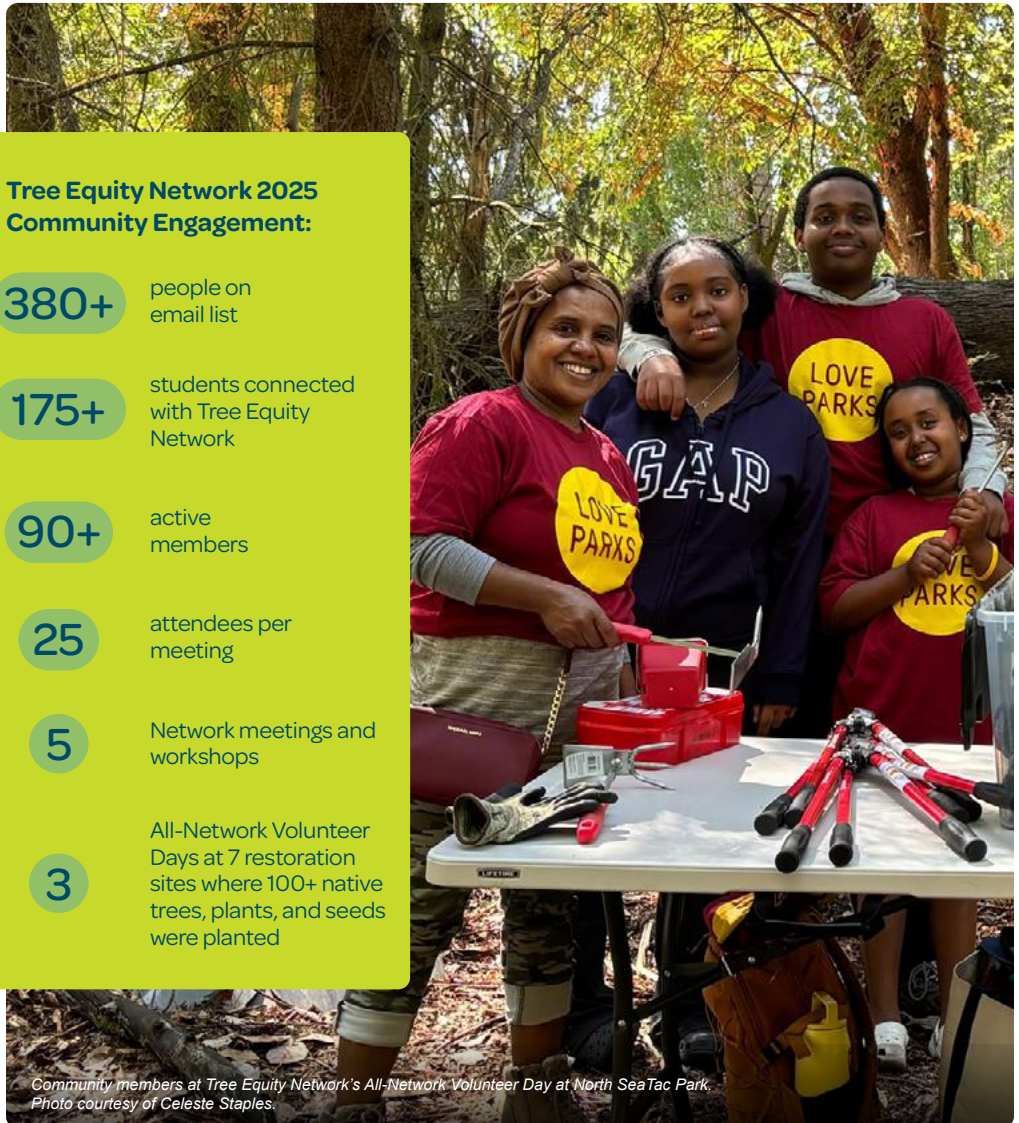
Westlake Park

In October, we broke ground on an important project at the heart of Seattle’s downtown core: Westlake Park. Construction started following months of planning and coordinating community feedback sessions, and renovations will modernize the park’s infrastructure ahead of the FIFA World Cup in 2026. Upgrades to the park will make the space more inviting to residents and visitors alike, while encouraging people to spend time in the neighborhood and support businesses, providing a sense of safety around Westlake. We are collaborating on this project with Seattle Parks and Recreation, Seattle FIFA World Cup Local Organizing Committee, Sellen Construction, Pine Street Group, Downtown Seattle Association, Downtown Community Council, Seattle Department of Transportation, and Berger Partnership.

TREE EQUITY NETWORK UPDATE

2025 was a year of thoughtful conversations and important decisions for our Tree Equity Network. From January to December, the Tree Equity Network was hard at work, bringing together local organizations, community members, and government agencies to address gaps in funding and coordination around tree canopy projects.

Tree Equity Network's calendar was stacked with opportunities to engage with community members through events such as All-Network Meetings, Volunteer Days, workshops, and more.



Tree Equity Network 2025 Community Engagement:

380+

people on
email list

175+

students connected
with Tree Equity
Network

90+

active
members

25

attendees per
meeting

5

Network meetings and
workshops

3

All-Network Volunteer
Days at 7 restoration
sites where 100+ native
trees, plants, and seeds
were planted

Community members at Tree Equity Network's All-Network Volunteer Day at North Sea Tac Park.
Photo courtesy of Celeste Staples.

Tree Canopy for Climate Resilience Grant

In 2025, Tree Equity Network launched the Tree Canopy for Climate Resilience (TCCR) Grant, a pilot program to fund tree canopy and environmental youth engagement projects with \$5,000 and \$10,000 grants. To qualify, organizations must be working to increase the percentage of tree canopy through efforts like planting, youth workforce development, habitat restoration, soil testing, and more. Projects must also be based in South Seattle, South King County, and unincorporated King County, areas known to have a lower percentage of tree canopy and are at risk of that number decreasing. Thanks to an anonymous donation facilitated by Seattle Parks Foundation, the Tree Equity Network had the opportunity to fund five local organizations' projects!

The Inaugural Cohort of TCCR Grantees

Dirt Corps' Outdoor Innovators program is an after-school program that coordinates with science teachers at Innovation Heights Academy to expose students to the principles of urban forestry and ecological restoration. Students learn about horticulture, restoration techniques, urban forestry basics, tree planting and care, community engagement, job opportunities in the environmental sector, and the skills they require.

Food Forest Collective's Beacon Food Forest project is a volunteer-powered food ecosystem that aims to address the environmental injustice, food insecurity, and lack of green spaces in the south end of Seattle. By building an equitable and community-led food system, they fill critical gaps by offering free access to organic produce, public green space, and opportunities for stewardship, education, and community care.

Black and immigrant-led nonprofit **Outreach & Transform Lives' Rooted Futures** program serves African and Black immigrant youth ages 14-16 in South King County. Rooted Futures provides the youth with opportunities to receive hands-on training and participate in certification programs about tree species, planting techniques, soil health, composting, and climate resilience, building foundational skills for future green careers.

Overcoming a history of underrepresentation in the environmental and climate justice movement is at the core of **Partner in Employment's Restoration Training Crew** program. The crew is made up of Black, Indigenous, People of Color, immigrants, and refugees who want to learn about urban forestry and stewardship through volunteering and paid trainings, while also introducing them to green career pathways.

East African immigrants and refugees in South King County steward parks, neighborhoods, and natural habitats through **Serve Ethiopian Washington's Nurturing Nature, Growing Community** program. They conduct invasive species removal and trash clean-up efforts to restore and improve the health of the parks' ecosystems while also creating opportunities for educational awareness and youth workforce development.

Congratulations to the TCCR Grant recipients!

Future Plans

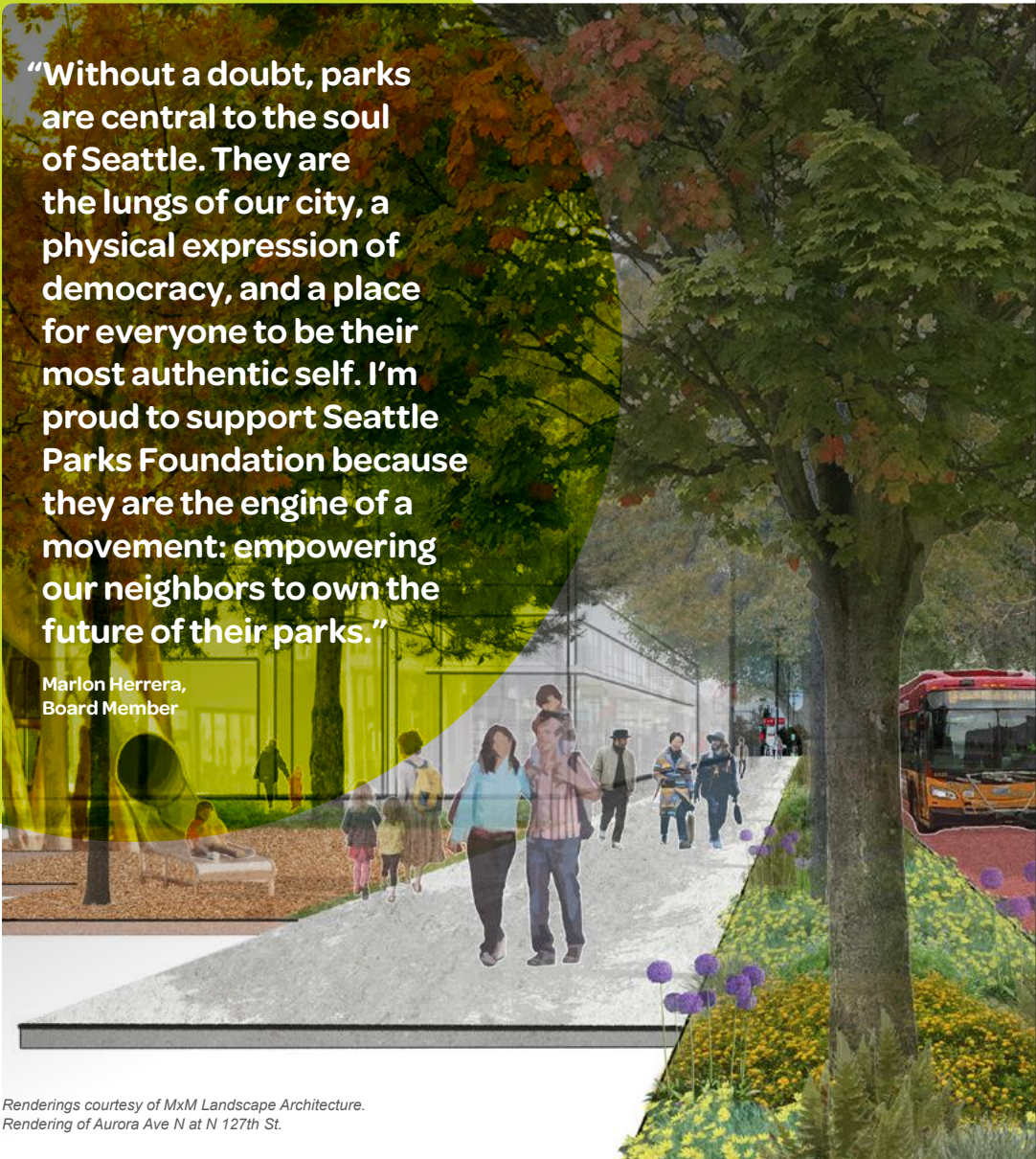
Preparations for another round of the grant program are already in motion! Since the review committee received so many phenomenal applications, those who did not receive a grant during the first round will automatically be considered for the next round of the TCCR Grant program, and in the years to come.

VISION OF A GREENER FUTURE

In the summer of 2025, we gathered with a group of Seattle Parks Foundation’s founders and thought leaders to begin to articulate what we see as a vision for a greener future of the city. As outlined in a *Seattle Times* op-ed published in September, the green future we hope to see requires meaningful neighborhood involvement – and our community has a proven track record of rising to the occasion.

“Without a doubt, parks are central to the soul of Seattle. They are the lungs of our city, a physical expression of democracy, and a place for everyone to be their most authentic self. I’m proud to support Seattle Parks Foundation because they are the engine of a movement: empowering our neighbors to own the future of their parks.”

Marlon Herrera,
Board Member

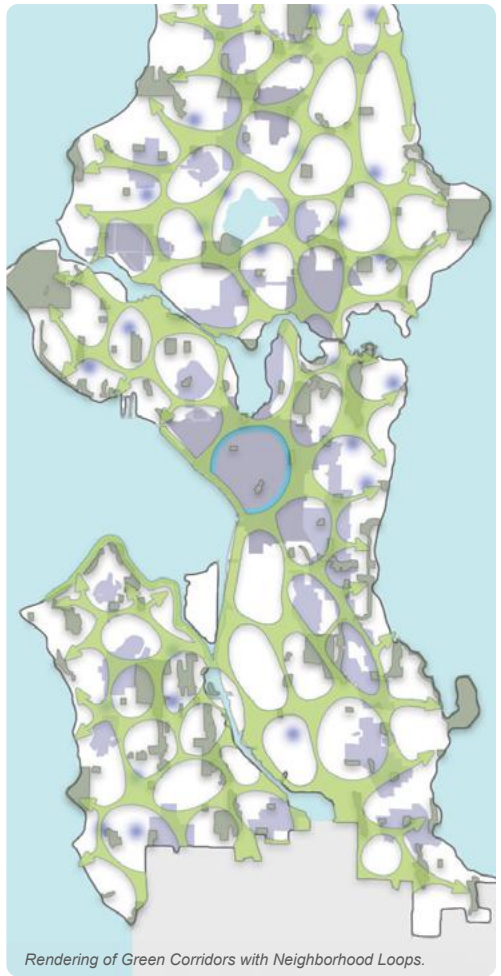


Renderings courtesy of MxM Landscape Architecture.
Rendering of Aurora Ave N at N 127th St.

In partnership with MxM Landscape Architecture, we created visual representations of what a future in Seattle could look like if we were to:

- Build on the Olmsted legacy
- Make green infrastructure the backbone of growth and invest in it up front
- Protect and expand walkable “green zones” aligned with transit
- Prioritize public land for public good
- Engage neighborhoods as partners
- Grow the tree canopy for climate resilience

We imagined what it could look like if we invested in green space, connectivity, and put neighborhoods first as we increase density. Thus, the concept of “neighborhood loops” was born – creating pedestrian greenways that connect our parks, schools, and urban forests into a citywide green space network.



Rendering of Green Corridors with Neighborhood Loops.



Inspired by the way people use some of the city’s most popular open space assets – the Green Lake Loop, the Seward Park path, the Cheshiahud Loop, and the developing crescent of parks and trails along Elliott Bay – we explored the idea of a boundless and interconnected system of green spaces that connect the city’s densest urban centers to its best natural assets. While this web is currently imagined, it gives us a sense of real work that could happen throughout the city to link our neighborhoods and communities more effectively to greenspace.



Rendering of Mt. Baker Aerial.

CURRENT PARTNERS

This map features our active partners through December 31, 2025.

Regionwide Partners

Ampersand Bikes Club
CIS
Community Land Conservancy
Dirt Corps
Emerald Alliance for People, Nature and Community
Emergency Communication Hubs
Friends of ROAM
Friends on Bikes
Green Seattle Partnership
Indigenous Advisory Council
Leafline Trails Coalition
Montañistas de Washington
Northwest Conservation Philanthropy Fellowship
Nosotros En Naturaleza (NEN)
Outdoor Asian National
Outdoor Asian, WA
ReuMo
Seattle Metro Pickleball Association
Sirius Astronomy
The Canary Collective
Tree Action Seattle
Trees and People Coalition
Trees for Seattle Parks Steering Committee

Duwamish Valley Partners

Concord International Elementary PTA
Duwamish Alive Coalition
Duwamish Valley Sustainability Association
Friends of 12th and Elmgrove
Friends of Duwamish Waterway Park
Friends of River City SkatePark
Georgetown Open Space Committee
Khmer Community Health Advocates
Lao Community Health Advocates

Southeast Seattle Partners

Banchero Legacy Group
Friends of Cheasty Greenspace at Mountain View
Friends of Deadhorse Canyon
Friends of Detective Cookie Chess Park
Friends of Mount Baker Hub Alliance
Friends of Rainier Beach Urban Farm and Wetlands
Friends of Seward Park
Healthy Othello - HOSTED
Hillman City Neighborhood Association
Honoring Bill Wright at Jefferson Park
Juneau Street Resilience Pod
King County International Airport Coalition
Link2Lake at Be'er Sheva Park
Othello Park Alliance
Public Art for Hutchinson Playground
Rainier Beach Playground Skatepark
Recreating Henderson Street

Southwest Seattle Partners

A Cleaner Alki
Friends of Chilberg Link
Friends of Lincoln Park (FLiP)
Friends of West Seattle Bike Park
Fruits to Frons Restoration / The Backyard Bee Project
Hoi Tam Lac
Morgan Junction All-Wheels Association
Ridge to River Coalition
Roxhill Bog Restoration
SeaPal
West Seattle Alki Beach Pride
West Seattle SkyLink

Central Seattle Partners

Belltown United
Cal Anderson Park Alliance (CAPA)
CANOES
Capitol Hill Community Council
Central District Community Preservation and Development Authority (CD CPDA)
(CID) Chinatown-International District Community Watch

Clise Orchid Fund
Come Out Seattle
Downtown Community Council
Dr. Jose Rizal Park Stewards
Friends and Neighbors in Cherry Hill
Friends of Arboretum Creek
Friends of Cayton Corner Park
Friends of Denny Blaine Park
Friends of Eastlake Tennis Revival
Friends of Lake Union Park
Friends of Leschi-Mt. Baker Traffic Circles
Friends of Madison Park
Garfield Super Block Coalition
Growing Vine Street Lid I-5
Madison Valley Emergency Communications Hub
Restaurant 2 Garden
Rewild Eastlake
Roanoke Park Emergency Hub
Seattle Adopt a Street Program
Seattle Martin Luther King Jr. Organizing Coalition
Volunteer Park Trust

Northeast Seattle Partners

Fix the Burke-Gilman
Friends of Bryant Park
Friends of Maple Leaf
Friends of Pathways Park
Friends of the Burke-Gilman Trail
Hiram and 28th Ave Neighborhood
Lake City Living Memorial Triangle
Lower Maple Leaf Centennial Intersection Mural
Lower Maple Leaf Neighborhood Magnuson Children's Garden Committee
Meadowbrook Community Gardens and Orchards (MCGO)
Meadowbrook Luminaria Walk
Meadowbrook Night Out NE 107th Street and Alton
Pinehurst Emergency Hub
Ravenna Community Garden
Ravenna South: Building Community and Preparedness

Northwest Seattle Partners

Ballard Emergency Communication Hubs
Broadview Prepares
Crown Hill Emergency Hub
Día de los Muertos PNW
Friends of Discovery Park
Friends of Golden Gardens
Friends of Kirke Park
Friends of Meridian Playground
Friends of North Beach Park
Friends of Phinney Avenue N Street Painting
Friends of Troll's Knoll
Friends of Woodland Park Ave
Green Lake Table Tennis Community
Olympic Hills Emergency Hub (OHCRA)
Ross Park Emergency Hub
Seattle Sensory Garden
Slow Your Roll 31st Ave NW
Stone Ave N. Mural

Eastside Partner

Bellevue Green & Clean

South King County Partners

Bhutanese Community Resource Center
City of Tukwila Parks and Recreation
Enumclaw Plateau Community Association
Ochre Outdoor Learning
Wakulima USA

REGIONWIDE NO PHYSICAL LOCATION





NORTHWEST

NORTHEAST

CENTRAL

EASTSIDE

SOUTHWEST

SOUTHEAST

DUWAMISH VALLEY

SOUTH KING COUNTY

ENUMCLAW

DES MOINES

FOSTERING INCLUSIVE COMMUNITIES



Seattle Parks Foundation and our community partners are **fostering inclusive communities** by working to make parks and public spaces reflect the cultural identities and needs of the people they serve. This includes cultivating vibrant centers of connection, celebration, and belonging that people of all abilities can enjoy.

Fostering Inclusive Communities

Come Out Seattle

As a part of Seattle's citywide festivities during Pride Month, Come Out Seattle invited community members to visit their 8 Years of Pride exhibit at Union Seattle in Capitol Hill. The exhibit featured original photographs taken by John Beck spanning Pride celebrations from 1986 to 1995 and captured the faces and spirit of Pride at the height of the AIDS epidemic.

Come Out Seattle honors and celebrates the city's LGBTQIA+ history by sharing and preserving the stories behind safe public LGBTQIA+ spaces.

Friends of ROAM

Led by youth, for youth, Friends of ROAM is an outdoor adventure crew that goes on trips catered to members of all experience levels. Youth leaders ages 14-18 plan and train for excursions with support from adult volunteers, who also help reduce financial barriers to participation. All year, they kayaked, hiked, backpacked, camped, and hit the slopes throughout Washington. Seattle Parks Foundation hosts their fundraising activities, allowing them to buy and store gear and lower financial barriers to youth participating in outdoor adventures. In April, they raised over

\$6,000 during Sufferfest, an annual fundraiser that goes towards gear, permits, scholarships, and trip supplies.

Montañistas de Washington

Formando Senderistas Responsables, by Montañistas de WA, is one of our newest projects. It focuses on coordinating activities for the Spanish-speaking community, with the goal of closing the gap for vulnerable populations who have limited access to the great outdoors. The program offers mentorship and leadership development through free hikes and sharing knowledge on how to reduce environmental impact while enjoying natural spaces in a responsible and meaningful way.

Morgan Junction All-Wheels Area

For years, the Morgan Junction All-Wheels Association faced setback after setback, making it nearly impossible to start their project. In the fall, they led an advocacy campaign, encouraging community members to write letters to Councilmembers and testify at Budget Committee hearings in support of including the All-Wheels Area in the City's 2026 budget, which was successful. This guaranteed funding has revitalized the Morgan Junction All-Wheels Association, and now they can finally move forward in creating an inclusive, community-designed skatedot.

GROWING URBAN RESILIENCE



When it comes to **growing urban resilience**, Seattle Parks Foundation and our community partners are advancing nature-based approaches in our parks and public spaces through restoration, tree planting, water stewardship, urban greening, community connections, and local food systems.

Growing Urban Resilience

Seattle Environmental People of Color

Initially a program of The Center for Diversity & the Environment (CDE), Seattle Environmental People of Color (SEAPOC) joined us in the fall to continue providing Indigenous, Black and People of Color (BIPOC) environmental professionals with a space where they can connect, learn, and dream with each other. In the spring, they went on an edible plant identification hike at Discovery Park and the group closed out the summer season with a BIPOC birding workshop at Union Bay. To celebrate their transition from CDE to Seattle Parks Foundation, they organized a celebration for members at the Seattle Aquarium, where everyone participated in rebranding and design activities.

Friends of Arboretum Creek: Arboretum Creek Headwaters Project

Over a decade into the effort to reconnect Alley and Alder Springs to Arboretum Creek and thus restore native lifeforms in the ecosystem and reduce flooding, the project has nearly completed its planning phase thanks to generous funding through Washington State Department of Ecology's Water Quality Grant and King County's Flood Control Grant. The collaboration among Seattle Parks and Recreation, Seattle Public Utilities, the Arboretum Foundation, King County, and the community has construction on track to begin in 2027.

Downtown Community Council

At the heart of the city, Downtown Community Council (DCC) helps residents get to know their neighborhood better while working to make downtown more vibrant and sustainable. This year, they piloted Hike the Hood, a group walk that creates community connections and guides neighbors as they explore hidden gems in downtown Seattle. As a community input partner for the Westlake Park renovation project, they joined us in hosting an Open House in the spring. In the summer, DCC joined us at our Pop-Up Concerts in the Park event at the Waterfront Park Stage.

King County International Airport Community Coalition

After having their voices go unheard in conversations related to The Port of Seattle's Sustainable Airport Master Plan (SAMP), King County International Airport Community Coalition (KCIACC) brought their concerns to the media early in 2025. Following the news coverage about how the expansion plan further puts South Seattle residents' air and health at risk, and after months of community engagement and conversations with airport and county officials, The Port of Seattle agreed to not go forward with the expansion plan. KCIACC also hosted a Candidates Forum at the Filipino Community Center in the summer to prepare voters for the 2025 General Election.

OUR VALUES IN ACTION

Seattle's history of redlining and other discriminatory practices created a landscape of inequity that is evident in the increasing challenges facing our region. We are committed to prioritizing our fiscal sponsorship offerings to communities that continue to be impacted as we work towards thriving and equitable parks and public spaces.

This work is guided by our values as an organization:

Partnership and Collaboration

We listen to learn, work in partnership, and lift up others. In 2025, we grew our partner network to 130+ community-driven groups. We also expanded partnerships in King County, with new projects in Bellevue, Seahurst Park, and Tukwila. This effort to provide our services beyond the city limits of Seattle is part of our broader strategic plan.

The work that we do is only possible through partnerships across city and county agencies. We work most closely with Seattle Parks and Recreation but also partner with King County Department of Natural Resources, Seattle Department of Transportation, Seattle Office of Sustainability and Environment, and Seattle Public Utilities. This year, we also partnered with the Seattle FIFA World Cup Local Organizing Committee to deliver two public realm capital improvements prior to the games.

We have focused on expanding Seattle Parks Foundation events through effective partnerships with a broad cross section of groups including The Residency's youth hip-hop program, Seattle Metro Pickleball Association, Birds Connect Seattle, Downtown Seattle Association, Friends of Waterfront Park, Kubota Garden Foundation, and Amazon.

We are grateful for these many longstanding partnerships, whose collaboration has allowed us to grow our physical presence throughout the region while engaging thousands of residents and visitors in our mission each year.

Racial Equity

We are committed to diversity, equity, inclusion, and justice. This means confronting our assumptions about structures of oppression and, in response, continually remaking our internal culture. Our Staff and Board grew in 2025, and we made every effort to ensure that the people associated with Seattle Parks Foundation reflect the community of Seattle.

We collect and report on demographics across our organization, as it is often asked of us, and are proud to share that 41% of our staff and 38% of our board are people of color. We also continued to intentionally work with diverse vendors, ensuring our network grows to not only reflect but also include the community we serve. Under the leadership of our new Board Chair, Deb Guenther, our board has made a commitment to incorporate Indigenous learning into their work. In recent board meetings we have welcomed leaders from throughout the Pacific Northwest to present and share how they foster Tribal relationships and apply Indigenous practices into their work.

As part of our commitment to racial equity we are dedicated to environmental justice, recognizing the disparities of climate change and which communities are harmed. The Tree Equity Network continues to prioritize our work in historically under-resourced and Black, Indigenous, People of Color (BIPOC) communities, which often have 50% less tree coverage than wealthier white communities. This year, through a generous donor, we were able to



Former Wayne Golf Course in Bothell. Photo by Kristen Milliron.

launch the Tree Canopy for Climate Resilience Grant, which focuses on getting funding into the communities most impacted by tree canopy injustice.

Accountability

When we commit, we deliver. When we make a mistake, we accept responsibility. As a fiscal sponsor organization, we are responsible to each of our 130+ fiscally sponsored groups. We are committed to providing timely and accurate financial statements, reporting on all revenue received, and ensuring we are in compliance with all state and federal rules and regulations. Accountability to our partners and to our donor community is prioritized in the work of every staff member.

This year we launched our new strategic plan, updating our strategic priorities to focus on fostering inclusive communities and growing urban resilience. This reflects the work that our community partners have been doing for years and is critical to the success of our growing region as we face the increasing demands of climate change.

During the City budgeting process, we advocated on behalf of our community through op-eds, advocacy alerts, and personal outreach to City leaders to ensure the budget was inclusive and supportive of the diverse neighborhoods and populations throughout Seattle. We are committed to using our voice and our connections to stand up for our community in direct conversations, meetings, and public advocacy campaigns.

Flexibility

We embrace change and the challenges that come with it. Due to the scale of many of our projects and the collaborative nature of this work, it is imperative that we are flexible. We are often met with construction delays, increasing costs, and competing demands, but we rely on strong relationships and open communication to ensure we can find solutions whenever possible.

This ethos is reflected internally as well, ensuring that we remain flexible for our partners while maintaining a high standard of professionalism.

Gratitude

We nurture a culture of gratitude and continually thank volunteers, staff, partners, and donors.

Every donor that makes a contribution to Seattle Parks Foundation or our community partners receives a personal thank you from one of our staff, and we have created gratitude programs to showcase our appreciation across our community.

Our partners are celebrated at multiple events throughout the year and offered stipends for their time whenever asked to do something in service to the organization, in addition to regular features across our social channels and eNews mailings.

We work hard to make our organization a supportive and enjoyable workplace, offering a week of restoration to our staff during the final week of the calendar year in addition to a generous PTO policy. This year we were also able to make a mid-year equity-based salary adjustment, offering percentage-based increases aligned to internal pay bands.

GET INVOLVED!



**Establish a
future gift and
join the Parks
Legacy Circle.**

*Crowd members dance at our Pop-Up Concert in the Park, July 2025 in Seward Park.
Photo by Jocelyn RC / Lightnotes LLC.*



Attend an event!
Visit our online
calendar for
opportunities.



Get updates on all this
and more when you sign
up for our eNews.



Become a
fundraiser for SPF
or your favorite
project.



Volunteer with us
and our community
partners.



Plan a company
work party and
unite your team
in service!



Read the latest
inspirational
community stories
on our blog.



Advocate for
the public
spaces you
care about.

Join the conversation.
Find us @SeattleParksFoundation:

FINANCIALS

Fiscal Year July 1, 2024 – June 30, 2025*

Revenue: Operations

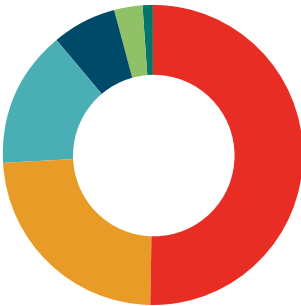
Operating revenue supports all of Seattle Parks Foundation’s work, staff, and organizational expenses. Unrestricted revenue allows us to provide our vast network of community partners with hands-on strategic and administrative support while enabling us to pursue public space initiatives in service to our mission and vision. Your contributions to our general operations allow SPF to thrive – thank you for your trust and partnership!



Individual Giving	46%
Foundations	6%
Earned Revenue	27%
Corporate	13%
Investment Income	8%

Revenue: Restricted

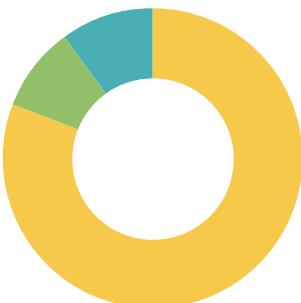
Our partners depend on the support of our community to bring their projects to life. We offer the opportunity to designate any gift towards a specific partner or project and take the administrative burden off our partners by offering financial services inclusive of processing and reporting all revenue received. Thank you for supporting this incredible community of grassroots partners!



Government	51%
Individual	24%
Foundation	15%
Corporate	7%
Investment Income	3%
Other	<1%

Expenses:

As our operations expand and demand for our services grows, we are committed to keeping our expenses low.



Program Services	81%
Operations & Administration	9%
Fundraising	10%

*Audited financials can be found at seattleparksfoundation.org



The services you offer are easy to use and very helpful for our project. Staff support is great. Compared to other fiscal agent services, SPF's is the best that I've experienced."

Othello Park Alliance
March 2025

Grand Opening of North Loop of the Cheasty Mountain Bike and Pedestrian Trails.
Photo by Elizar Mercado.

Staff

Elias Arkham
Administrative Coordinator

Rebecca Bear
President and CEO

Louise Bednarik
Public Grants Administrator

Michelle Benetua
Director of Strategic Partnerships

Shirley Coly
Major Giving Strategist

Lauren Daniels
Director of Marketing and Communications

Theresa Farrell
Accounting Assistant

Robert Furlong
Systems and Operations Manager

Anna Guthrie
Program Manager, Fiscal Sponsorship

Shava Lawson
Director of Fiscal Sponsorship

Thashawna McSon
Manager of Grants and Institutional Engagement

Kristen Milliron
Chief Operating Officer

Kiyomi Morton
Accounting Manager

Sarah Olivo
Annual Giving Manager

Victor Quiroga
Program Coordinator

Celeste Staples
Program Manager of Urban Climate Resilience Projects

Yordanos Tesfazion
Content Coordinator

Board

Debra Guenther, Chair
Catherine Walker, Secretary
Rachel Kirschner, Treasurer
Garrett Kephart, ex-Chair
Ross Baker
Andrew Bloom
Allegra Calder

Nick Engel
Maya Mendoza-Exstrom
Ann Grodnik-Nagle
Marlon Herrera
Jill Jackson
Gerry Johnson
Tahreem Kampton

Tim Lehman
Kwadwo Oware
Heather Pfahl
Amit Ranade
Neelima Shah
Mike Stanley
Megan Torres

Our work celebrates the contributions of Doug Raff and Chris Towne, founders and early supporters of SPF.

PO Box 3541
Seattle, WA 98124-3541

seattleparksfoundation.org
@seattleparksfoundation

2025 IMPACT

4



Advocacy Campaigns for
Local Levies and National
Public Lands Support

10,000+



Partner
Volunteers



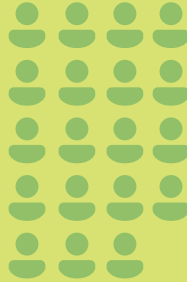
3

New
Staff
Members



2

Climate-Oriented
Community Events



19

New
Partners



90+

Active Tree Equity
Network Members

4



Grand
Openings



2

Park
Groundbreakings

2,000+



attendees at 7 Pop-Up
Concerts in the Park



89

Community Events
promoted in our
Monthly eNews



1,000

Participants in the
3rd Annual Pickleball
for All