



PHSU

PONCE HEALTH SCIENCES UNIVERSITY

· Tortola, BVI ·

International Location in British Virgin Islands PHSU School of Medicine



Doctor of Medicine Program

About PHSU

With almost over 45 years of experience preparing tomorrow's healthcare leaders, Ponce Health Sciences University (PHSU) is proud to open a medical school in the British Virgin Islands (BVI).

PHSU School of Medicine BVI is excited to establish its Doctor of Medicine program in Tortola. This MD program is preliminarily accredited by ACCM and offers a culturally-focused 4-year curriculum providing students with an ethnically diverse, scientifically-sound, culturally sensitive, innovative and tech-driven medical education.



Look Inside

3

From our
Dean

4

MD Pathway
Curriculum

5

Requirements

6-7

Student Support
Financial Aid

8

Why PHSU BVI
Facts



From our Dean



Welcome to Ponce Health Sciences University BVI.

When I speak with future physicians, I always begin with a simple belief: becoming a great doctor starts long before you enter the clinic. It begins with becoming a strong human being thoughtful, ethical, resilient, and committed to service. At Ponce Health Sciences University – British Virgin Islands School of Medicine, that belief defines everything we do.

Our educational model is intentionally built around closeness with the student. I firmly believe that excellence in medical education is achieved when faculty know their students, when leadership is accessible, and when mentorship is not an exception but a daily practice. Here, you will not be one more number in a lecture hall. You will be known, supported, challenged, and guided personally throughout your academic journey.

We bring the full academic experience and institutional expertise of a U.S. medical school. Our curriculum, assessment systems, faculty development, and academic governance are grounded in the highest standards of medical education. Our faculty are experienced clinicians, educators, and researchers who understand not only how to teach medicine, but how to form professionals prepared for the realities of modern healthcare.

At the same time, we offer something truly unique: a genuine international academic experience. Studying medicine in the British Virgin Islands allows you to develop a global perspective on health, culture, and service, while remaining fully aligned with educational pathways and professional expectations. This environment shapes physicians who are adaptable, culturally aware, and prepared to lead in an increasingly interconnected world.

We are deeply and unequivocally committed to academic excellence. Excellence is not a slogan for us; it is a discipline. It is reflected in how we design our curriculum, how we evaluate learning, how we support students, how we develop faculty, and how we govern our institution. Every decision is guided by one question: does this make our students better physicians?

Above all, I believe in forming good people so they may become exceptional professionals. Knowledge without character is incomplete. Skill without integrity is insufficient. At PHSU BVI, we intentionally cultivate professionalism, empathy, responsibility, and service alongside scientific rigor and clinical mastery.

If you are seeking a place where you will grow intellectually, mature professionally, and develop personally — an institution where you will be shaped not only as a physician but as a human being; I invite you to consider this journey with us. Here, you will prepare to become not simply a doctor, but the very best physician you can be.

Dr. J. Daniel Perez
(MD, MSc, MBA)
Executive Dean / VP of Operations
Tortola, BVI

9

Visa
Requirements

10-11

Welcome to
Tortola

12

Housing
& Food

13

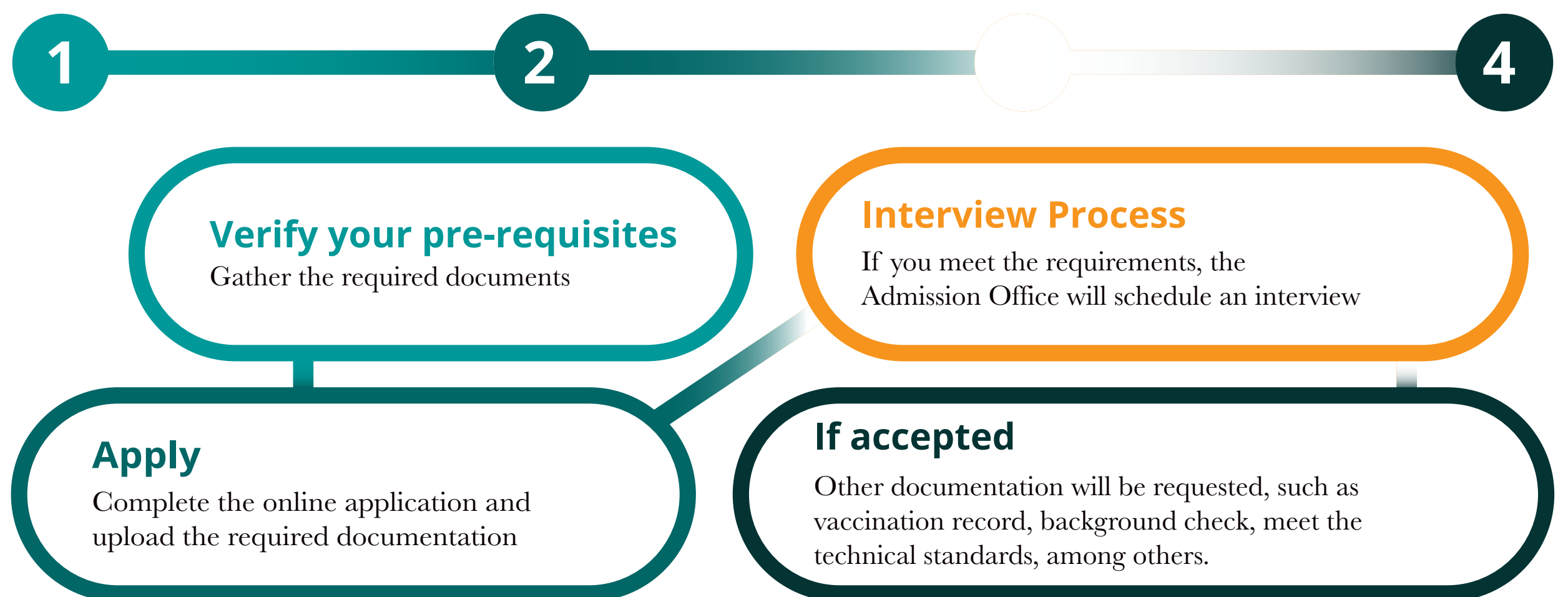
Safety
& Healthcare

PHSU Doctor of Medicine (MD) Program

Now available at our new location in Tortola!

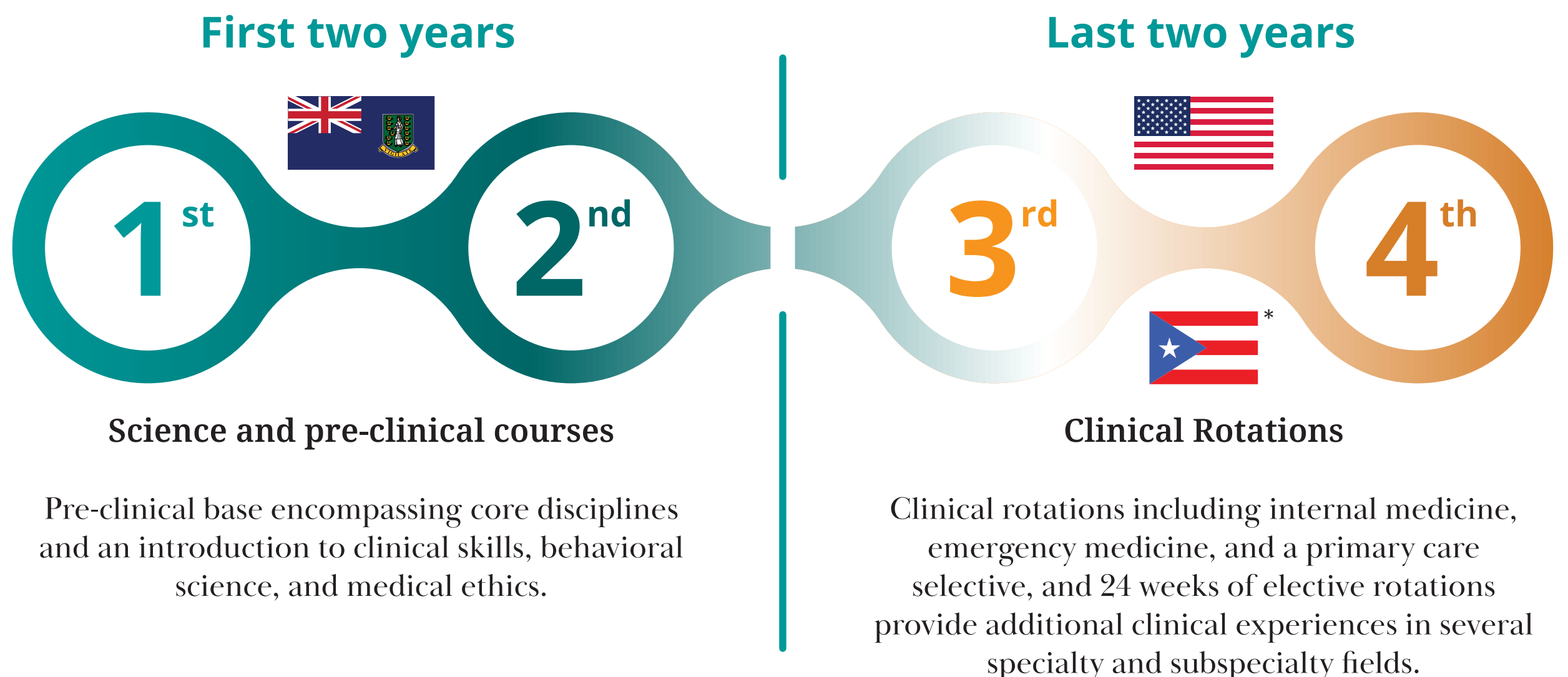
Join the prestigious PHSU School of Medicine BVI Doctor of Medicine program, now offered in the British Virgin Island of Tortola. Our program prepares world-class physicians to tackle the challenges of modern healthcare. Experience diverse learning environments and top-tier resources at each of our locations. Be a part of a legacy dedicated to advancing medical knowledge, compassion, and service globally.

Admissions Process



Curriculum

Our interactive and innovative program helps prepare students to apply for clinical rotations in the U.S. or *Puerto Rico



*Spanish speakers can be considered to do rotations in Puerto Rico.

Requirements

PHSU School of Medicine BVI looks for students with a passion for serving others and a keen interest in the medical sciences, demonstrated through scholastic achievement and persistent pursuit of volunteering, employment, extracurriculars, or other activities relevant to healthcare.

Applicants must meet the following criteria to apply:

Minimum Bachelor's Degree



from an Accredited Institution

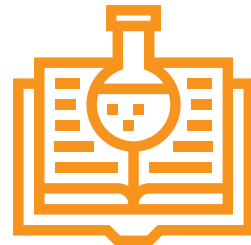
Official MCAT score



Only required for U.S. Citizen/Nationals/Permanent Resident applicants



CV or Resume



Personal Statement



2 Letters of Recommendation

Applicants are expected to have completed the following prerequisite courses. Substitutions and/or exceptions for prerequisites are made on a case-by-case basis at the discretion of the Admissions Dean and/or Admissions Committee:

COURSE	CREDITS
Biology + Lab	8
Chemistry + Lab	8
Organic Chemistry or Biochemistry + Lab	8
Physics, Statistics, or Calculus	3

Other requirements:

- | Official Transcripts
- | Proof of English Knowledge
- | ECE or WES evaluation report for students with degrees from International Institutions
- | Applicants may submit a PDF of their AMCAS or AACOMAS application, for Admissions Committee review. Upon acceptance, you will need to submit final, official transcripts, and official MCAT results.
- | Interview

English proficiency is essential for the program. Bilingual (English and Spanish) applicants may have clinical rotation opportunities in Spanish-speaking settings.

Accepted applicants must provide immunization record to prior enrollment and attest to meeting the school's Technical Standards.

For more information about admissions requirements visit: phsu.edu

Committee members may enroll candidates who do not fully meet these criteria, if they possess other qualities that align with the program's needs and demonstrate the potential to succeed. Non-refundable application fee required at submission.

Student Services Overview...

Welcome to PHSU School of Medicine at BVI! Our comprehensive student services are designed to ensure your success and well-being throughout your medical education journey. Here's a snapshot of what we offer:



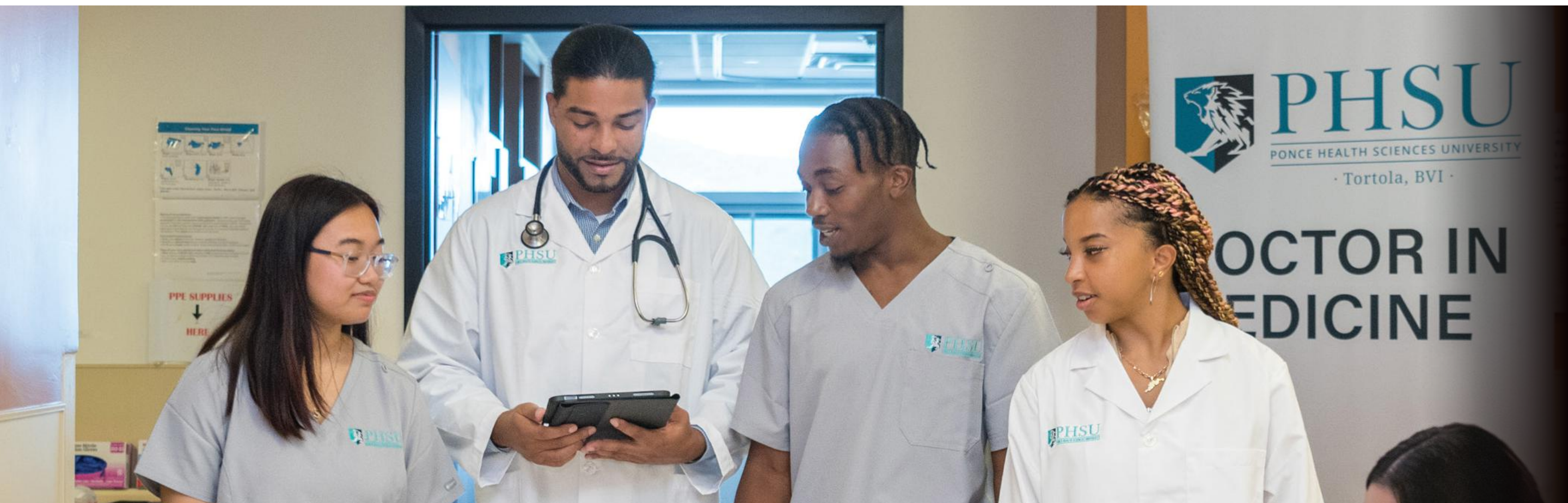
Academic Guidance, Mentorship, and Career Counseling

Orientation: New students receive a thorough orientation introducing them to school services and regulations.

Academic Counseling: Advisors provide personalized guidance, helping with study schedules, additional tutorial support, and navigating student conduct rules.

Academic Advising: Students are paired with faculty mentors who offer continuous academic counseling to guide students through the pre-clinical and clinical phases.

Career Counseling: Our career counseling system offers support on medical specialty choices, residency applications, and licensure preparation.



Financial Guidance

Education Financing Counseling: Expert advisors help students understand and navigate options to finance medical education.

Budgeting Assistance: Guidance on budgeting and managing educational expenses is readily available.

Scholarships and Grants: Information and assistance with applying for scholarships and grants to help ease the financial burden.





Student Records

Confidentiality and Accessibility: Student records are kept confidential but are accessible to students as needed.



Security, Student Safety, and Disaster Preparedness

Campus Security: Our campus is equipped with comprehensive security measures to ensure student safety.

Emergency Preparedness: Detailed disaster preparedness plans are in place to handle emergencies effectively.

We are dedicated to creating a supportive and enriching environment for our students. Choose PHSU School of Medicine at BVI for a confident and welcoming start to your medical career!

Options to Finance your Education

The Student Financial Services Office provides information and tools to assist candidates to meet their educational goals.

Some of the financial options available to PHSU BVI are:

- | Federal Student Aid (available for eligible students)
- | Private Educational Loans through Sallie Mae
- | Scholarships
- | Payment Plans

Our officers are available to help you in this professional journey and explain your options. Contact our Financial Services Office at 314-499-6540 or email psmfinstu@psm.edu.



Why BVI?

Part of a University



with over 45 years of experience

Curriculum designed to allow



students to take U.S. licensing exams

Small Class Size



1:8 faculty to student ratio

Apply for rotations



with major hospital systems in the U.S. or Puerto Rico

Why PHSU?

Career-Focused Education

Every educational program and faculty member is focused on our students' future careers. From day one, we help students move toward their dreams in healthcare with opportunities to advance their careers.

Experience the British Virgin Islands

Our university center is located on the beautiful island of Tortola. When you're not busy getting a top-tier education, you'll find exciting cultural experiences and lush natural landscapes waiting to be explored.

Diverse Student Body

Our mission is to open doors for students from diverse socioeconomic backgrounds who have the skills and potential to become culturally competent healthcare professionals.

An Affordable Health Education

By investing in an education from PHSU BVI, you're taking a step toward your dreams. We're working to create health sciences education accessible for all students.



Visa Requirements...

Member countries from The Commonwealth may not need a visa to study at PHSU BVI Location.

Student Visa Application: You will need to apply for a student visa specifically for the British Virgin Islands (BVI).

Required Documents:

Acceptance Letter: A letter of acceptance from PHSU School of Medicine.

Passport: A valid passport with at least six months remaining before expiration.

Visa Application Form: Completed visa application form.

Head Shots: Passport-sized photographs as specified by the BVI immigration authorities.

Proof of Financial Support: Evidence that you have sufficient funds to cover tuition fees and living expenses.

Health Insurance: Proof of valid health insurance coverage.

Background Check: A background check certificate from your home country.

Application Process:

Submit Application: Submit the visa application and required documents to the nearest BVI consulate or embassy.

Interview: You may be required to attend an interview at the consulate or embassy.

Processing Time: Visa processing can take several weeks, so apply well in advance of your intended start date.

Upon Arrival:

Immigration Check: Present your student visa and supporting documents to the immigration officer.

Enrollment Verification: Ensure you have documents from PHSU to verify your enrollment status.

For detailed and updated information, always check with the official BVI immigration website or contact the nearest BVI consulate.

Welcome to Tortola!

Tortola, BVI is a great place to start your healthcare education. You have probably heard about the Virgin Islands as a sailing and marine life paradise, but we have so much more to offer!

Our facility is situated just a few minutes from Road Town, the largest city in the BVI, which serves as a hub for attractions, adventures, and dining. You'll feel right at home here. PHSU BVI is conveniently located in Parham Town on the island of Tortola. From here, you can explore the BVI and experience life in this island community, which consists of 4 main islands and numerous smaller ones.

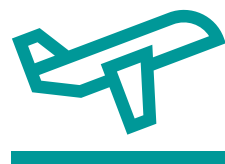
Come discover the wealth of attractions BVI has to offer from history and culture to outdoor adventures; there is something for everyone! If you're looking for a top-notch education in a beautiful setting, PHSU BVI is the ideal place for you to advance toward your dream career.

Travel Information

Traveling to Tortola, British Virgin Islands (BVI), for your studies at Ponce Health Sciences University is an exciting journey. To ensure you have a smooth trip, we've outlined several travel options for you. Below, you will find various airlines and routes to help you plan your travel efficiently.

Travel Options to Tortola, BVI:

Direct Flights



While direct flights to Tortola's Terrance B. Lettsome International Airport (EIS) are limited, some airlines offer direct services from select destinations:

American Airlines: Direct flights from Miami (MIA)

Delta Airlines: Seasonal direct flights from Atlanta (ATL)

Ferry Services



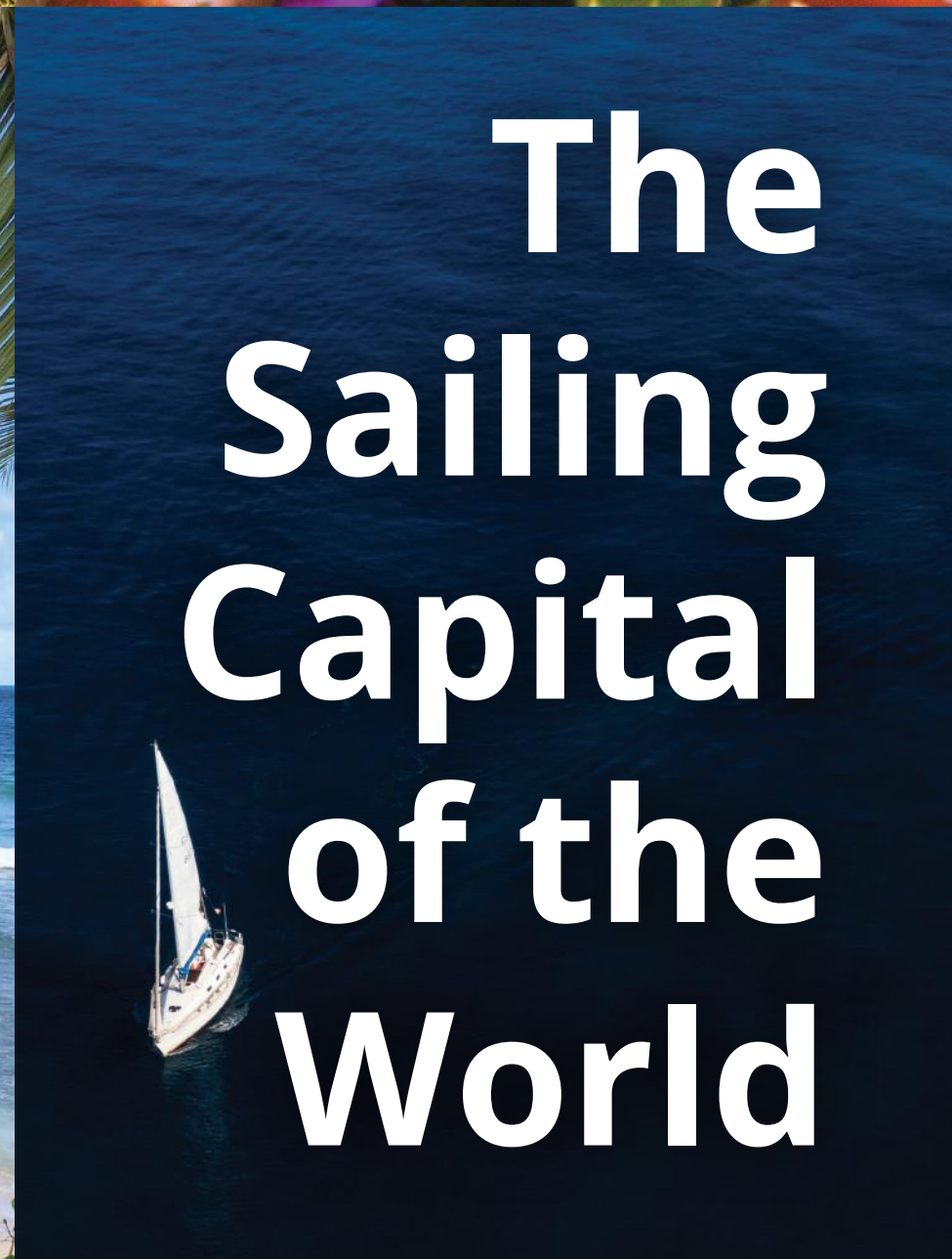
If you prefer traveling by sea from nearby islands:

St. Thomas, USVI
Inter-Island Ferry Services and Road Town Fast Ferry offers frequent trips

Please ensure you check the latest travel advisories and entry requirements for Tortola, BVI, before your departure. Safe travels, and we look forward to welcoming you to PHSU in Tortola!



Tortola, British Virgin Islands



Connecting Flights



For more flexibility, consider connecting flights via major Caribbean hubs:

San Juan,
Puerto Rico (SJU):
Cape Air
interCaribbean
Caribbean Airlines
Tradewind

St. Marteen (SXM):
WINAIR

Antigua (ANU):
LIAT
interCaribbean
VI Airlink

St. Thomas,
USVI (STT):
Cape Air
LIAT

Charter Flights



Private charter flights are available for more direct access and flexibility:

Air Sunshine
Island Birds

Housing

Tortola offers a variety of housing options to accommodate the needs and preferences of students. From fully furnished apartments to cozy rental homes, there is something for everyone. Many housing options are conveniently located near essential services, shopping centers, and recreational facilities. Additionally, many rental properties include amenities such as internet access, laundry facilities, and air conditioning, ensuring a comfortable living experience.

For more information contact our Student Affairs office: bvi-admissions@psm.edu

Food in Tortola

Tortola boasts a rich culinary scene that caters to a wide range of tastes and dietary preferences, making it easy for students to enjoy delicious and nutritious meals. The island features numerous restaurants, cafes, and food stands offering a variety of local and international cuisines. From fresh seafood and Caribbean specialties to Italian, Asian, and American dishes, there is something to satisfy every palate.



Safety

Safety is a top priority in Tortola, making it an ideal destination for students. The island is known for its low crime rates and welcoming community. The local police force is dedicated to maintaining a safe environment, with regular patrols and a strong presence throughout the island. The friendly and tight-knit community also contributes to the overall sense of security. Students can feel confident walking around the island, whether exploring the beautiful beaches, attending classes, or enjoying local events.

Healthcare

Access to quality healthcare is readily available in Tortola, providing peace of mind for students and their families. The island is home to several medical facilities, including the modern and well-equipped Dr. D. Orlando Smith Hospital, which offers a wide range of services such as emergency care, specialized treatments, and routine check-ups. Additionally, there are numerous private clinics and pharmacies throughout the island, ensuring that medical assistance is always within reach.





PHSU

PONCE HEALTH SCIENCES UNIVERSITY

· Tortola, BVI ·

Start Dreaming Bigger

Your Future Awaits in BVI

Scan and Learn more
about PHSU BVI:



314-499-6540



bvi-admissions@psm.edu



Upholding Excellence in Medical Education

PHSU BVI's additional location submitted a proposed substantive change, which is pending approval by the Middle States Commission on Higher Education in November 2024.

The next accreditation visit is scheduled for 2026-2027.

Middle States Commission on Higher Education
1007 North Orange Street
4th Floor, MB #166
Wilmington, DE 19801