

Winchelsea Star

Price \$1

Weekly Winchelsea News

Since 1977

Vol 49 Ed 14

Tuesday 14 April 2026

winchelseastar.org.au



Conquer the Corrugations 28-29 March 2026

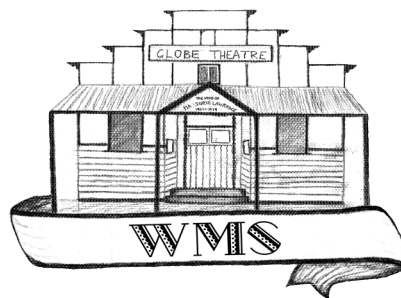
Participants embraced the weekend with a strong sense of community, connection and purpose, to help one another overcome the bumps on life's road. Page 9

Longing

Helen Ling *soprano*
Zinaida Campion *soprano*
David Stewart *piano*

Will perform a varied programme of soprano repertoire to commemorate the

100TH ANNIVERSARY OF THE
GLOBE THEATRE



“Longing”
5pm Saturday 2 May
Globe Theatre,
17 Willis St,
Winchelsea

WINCHELSEA MUSIC SEASON Page 3

Subscribe and let us come to you online. Free. Every edition.
<https://winchelseastar.org.au/step/subscribe/>

CONTENTS

COVER

Conquer the Corrugations, Winchelsea Music Season

FEATURES

Do you recognise anyone?	Judy Cameron	2
Conquer the Corrugations 2026	Robyn Black	9
Nathan Harvey Special Olympics	Kim Harvey	10
March Community Dinner	Jess Butler	11
Winchelsea Community Op Shop	Winch Op Shop	13
Stitch It, Don't Ditch It	Winch Craft Group	19
Boost for Animal Care Services	Agriculture Vic	19
Christmas in Winchelsea Report	Elaine Atkinson	23
Grounded Festival	Grounded Festival	30
Saving through Recycling	Container Deposit	30

LETTER TO THE EDITOR

Barrabool Hills Uniting Church	Maureen L	2
--------------------------------	-----------	---

THE ARTS

Winchelsea Music Season	Zinaida Campion	3
Volunteer for Surf Coast Arts Trail	Surf Coast Shire	19
Grounded Festival		31

GARDENING

Julia's Kangaroo	Julia Holohan	4
------------------	---------------	---

COOKING

Cooks Corner	Alice Cloake	5
--------------	--------------	---

SENIOR'S CORNER

Senior Citizens' Club	Elaine Atkinson	6
Bridge Morning	Elaine Atkinson	7

THE RIPPLE EFFECT

Corellas in Winchelsea	Madame Butterfly	10
------------------------	------------------	----

COMMUNITY INFORMATION

Community Noticeboard		13
Services and Activities in Winchelsea		16
What's On April/May 2026		20
Advertisers' Phone Directory		26

YOUNG PEOPLE

Free School Fun	Vic Government	14
Playgroup going to Buttleigh Farm	Winch Playgroup	14
Flu vaccinations for under-fives	DHHS	14
1st Modewarre Scout Group News	Marie McFadden	15
Winchelsea Girl Guides	Yvonne Orchard	15

HISTORY AND CULTURE

Former Bootmaker's Shop	Michael Donovan	17
-------------------------	-----------------	----

FUN

Sudoku		23
--------	--	----

THE ENVIRONMENT

Is your street fire hydrant accessible?	Surf Coast Shire	24
Bushfire Recovery Support	Vic Government	24
Climate Report	Judy Cameron	25

CHURCHES

Church Services		27
Thought of the Week	John Bader	27
Psalm 8	Helen Rolls	27
Urgent Food Appeal	Asylum Seekers RC	27

HEALTH AND WELL BEING

Local Paediatric OT	Hesse Health	29
The Flu Season is upon us	Judy Cameron	29

SPORTS AND EXERCISE

Winchelsea Golf Club	Rachel Boddington	33
Winchelsea Junior Netball	Shae Callahan	35
Winchelsea Netball	Angie Mawson	37
Trebeck Parkrun	Neil McInnes	39



Letter to the Editor

Thank you so much for the Editorial in last week's paper, just been brought to my attention. Wonderful to have your support.

Maureen L, Secretary Barrabool Hills Uniting Church.

Do you recognize anyone?

Judy Cameron

I found a moth-eaten, or perhaps silver-fish ravaged, page from the Weekly Times dated December 17, 1958 which my Mother had saved. The headline was "School sports held at Dean's Marsh" with photographs of students from some Primary Schools who took part. These included Winchelsea, Birregurra, Deans Marsh, Lorne, Wurdi Boluc, Bamba, Fairholme, Murroon and Ripple Vale.



I have given the Winchelsea Historical Society (and Birregurra) a copy and it would be great to have names to go with the photos to update the records at the Historic Society. Here are the Wurdi Boluc and Winchelsea ones. If you can identify anyone from these grainy pics please advise us via editor@winchelseastar.org.au





Zinaida Campion

Winchelsea Music Season:

Our community strikes a new note!

In less than three weeks, Winchelsea will have another distinction from other rural towns in the area, other than Marjorie Lawrence and rabbits. The first ever Winchelsea Music Season is about to launch, an all-new cultural initiative designed to bring world-class music directly into the heart of our community. No more travelling to Melbourne for an injection of culture!

Winchelsea Music Season is the first major project of my new community-focused regional arts organisation Rural Arts Victoria and is shaped first and foremost by the needs, aspirations, and cultural identity of the community it serves. It is built on the belief, that population size is not a measure of cultural quality, and that the arts can thrive in rural areas, perhaps in their most sincere form. Fine music should not be the preserve of the cities, and regional communities deserve rich cultural lives too.

The inaugural concert, *Longing*, will take place on 2 May 5pm at the historic Globe Theatre, which celebrates its centenary this year. It will feature myself and guest artists soprano Helen Ling and pianist David Stewart, both of whom have strong ties the region. The program, which explores longing in all its forms both anticipatory and nostalgic, has been curated to celebrate the two aspects of a centenary: memories of the past hundred years, and hopes for the next.

Hurry to get your tickets for a local concert like none before, followed by light refreshments courtesy of the CWA.

What sets our music season apart is its local focus: local artists, local venues, local stories. For young people in the district, this visibility is powerful. Seeing artists from their own region on the home stage – not Melbourne or Geelong, but here – sends an unmistakable message. Artistic carers can begin in places like Winchelsea, and you don't even have to be Marjorie Lawrence! Suddenly the arts are not something that happens "elsewhere", they are a part of our lives.

Zinaida Campion is a classical soprano, vocal coach, artist and model raised in Winchelsea. She is an alumna of VOYCE Victorian Opera, a Windfire Vocal Scholar, Co founder of Cecilia's Daughters, Vice President of Geelong Opera, Artistic Director of the Winchelsea Music Season, and founder of Rural Arts Victoria. A keen arts writer, she has a strong background in languages and a love of local history. She is dedicated to working with the local community, and has an all-consuming passion for promoting the arts in rural areas.

To share your stories and inspire the community, please contact Zinaida. 0428 403 784 zinaidacampion@gmail.com



The Season also promises tangible benefits for local businesses. Cultural events draw visitors, encourage longer stays, and create flow-on opportunities for cafés, shops, accommodation providers, and tourism operators. But beyond the economic uplift, the deeper value lies in the shared experience — the chance for neighbours, families, and visitors to gather in a space that has held a century of Winchelsea's memories.

In launching this Season, Winchelsea is doing more than hosting concerts. It is reclaiming its cultural voice, honouring its heritage, and investing in a future where the arts are accessible, meaningful, and woven into everyday life.

As the first notes of *Longing* rise inside the Globe Theatre, they will mark the beginning of a new era — one shaped by community pride, artistic excellence, and the belief that rural towns deserve beauty, depth, and music of their own.

Marjorie Lawrence left home to find art. Winchelsea Music Season will bring art home.

Ciao!

“Longing”

2 May 5pm

Globe Theatre, 17 Willis St Winchelsea

Tickets at the door or via Trybooking,
Adult \$50, Concession \$40, School Students free.
Light refreshments to follow.





Julia's kangaroo

Julia Holohan

Wouldn't you just love this view from your kitchen window, Bruce included?

It's just on dark, I spring from my comfy chair and dart for the door, the chooks aren't locked up, gotta get there before Mr Wylie Fox!

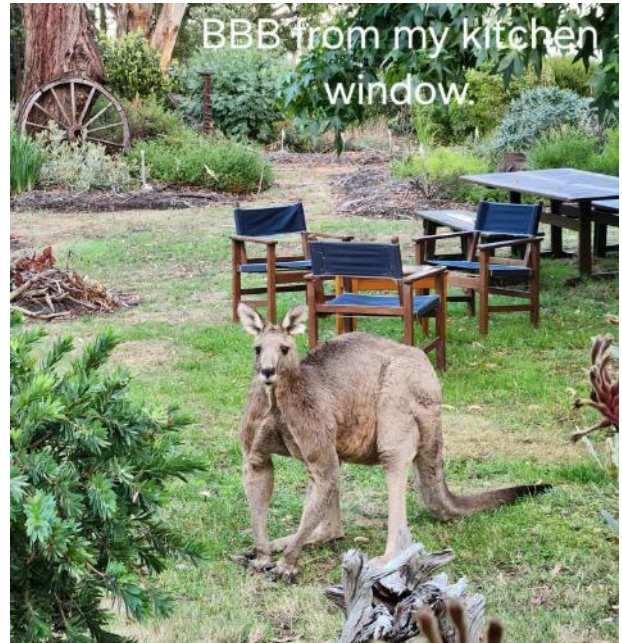
How many times have I done this, thinking all was done, relaxing into my recliner only to be jolted to the realisation of the possibility of impending trouble in the chook house? - Too many times.

I fling open the door in a panic only to come face to face with the imposing bulk of big bad Bruce who, not a split second before was casually nibbling grass at the edge of the porch, barely 2 metres from me.

We both stand stock still, he raises to his full height, chest out and he is amazingly large and muscular. We make eye contact and simultaneously, I yelp and he grunts! It all only takes a second.

Being the gentlemanly old fella that he is, he casually turns and moves away so I can race off to the chooks.

we haven't had to mow. They haven't eaten any of the garden and they leave a massive amount of droppings which hopefully fertilise the lawn but, does make it risky to enjoy bare feet strolls of the garden!



Big Bad Bruce is our resident old kangaroo living the last days of his life in ours and our few close neighbours gardens. At the moment we have two of them sharing our round of gardens. They have done a marvellous job of keeping the lawns trimmed, especially where the septic grass grows well over the dry summer,

We've had one or two at a time for some years, making themselves at home having been ostracised from their mobs when they've no longer been able to fight off the young bucks taking the alpha position. Some have been quite decrepit with stiff joints and difficulty moving elegantly but they all seem to like the safety of our gardens. Nibbling green grass, protection from cold winds or casually spreading themselves out to lounge in a warm sunny spot.

Our old dog prefers to stay on his bed on the porch ignoring them when they're at our place, he pretends they are not there.

They're all named "Big Bad Bruce" as that's what they look like when they stretch to full height. At close range they're all muscle, even those funny little front legs - all muscle!

We treat them with respect, maintaining distance and respect. They just need a safe haven to see out their lives. They'll disappear, I assume to find a place to die, then it's not long another or two will move in in their place.



Neurologically-Focused, Holistic Family Health Care

Get yours and your families health back naturally
Empower yourselves for life-long health & wellness
Perform and play at your absolute best






www.onebodychiropractic.com.au
03 52672240 21 Hesse St Winchelsea

Here for your Vitality...



This is a place for passionate foodies.

Here we celebrate local produce, seasonal ingredients, simple yet remarkable recipes we've tried, tested and loved.

Alice Cloake



If you have a recipe you'd like to share, a local product to shout out or a suggestion for an upcoming ingredient of the month - we'd love to hear from you.

Email editor@winchelsea.org.au.

APRIL

Ingredient of the Month

Eggplant



Once again Alice has given us a mouthwatering recipe in her Cooks Corner. Enjoy! I know I will. *Editor*

This week's Cooks Corner comes to you from a hotel in the Payangan rainforest near Ubud, Bali, Indonesia. Earlier today I went on an organic farm tour and had a cooking class in the village of Tegalalang. There I saw cinnamon bark cut from its tree, learnt how they manually pollinate their vanilla bean plants, and heard how they harvest and then drain palm sugar from the flower stalk of a Palm Tree. There was however, only one sighting of an eggplant, and it was hanging on its bush, still young at about half the size of my thumb. So eggplant - our ingredient of the month - wasn't a major feature in our dishes today... but I do have something to offer you from today.

This week I share with you one of my Ottolenghi favourites. It's a simple dish that involves barbecuing eggplant discs and topping them with a mouth watering anchovy and vinegar dressing. As a bonus recipe I offer you the Sambal Tomat Ulek* (sauce) we made today, and I suggest you try it over eggplants prepared the same way.



Alice picking greens from a Balinese organic farm

Sambal is a type of relish/sauce/condiment and there are many different types of Sambal, but all include the same three ingredients: shallots, garlic and chilli. Sambal tomat ulek is made by grinding tomatoes, chilli peppers, and aromatics using a cobek (stone mortar and pestle). It is characterized by its vibrant red colour and a balance of spicy, savoury, and slightly acidic flavours provided by the tomatoes.

RECIPE

Roasted Aubergine with Anchovies and Oregano

By Yotam Ottolenghi, from Simple

View it here: <https://thehappyfoodie.co.uk/recipes/yotam-ottolenghis-roasted-aubergine-with-anchovies-and-oregano/>

This is one of my tried and true favourites from Ottolenghi's Simple cookbook and the first recipe I think of when I've got eggplants to use up. I like to have as a side to barbecued meat with a salad. So simple, so delicious, as is Ottolenghi's way.

INGREDIENTS (serves four as a side)

- 4 medium eggplants, sliced into 2cm thick discs (1kg)
- 100ml olive oil
- 20g anchovy fillets in oil, drained and finely chopped
- 1 tbsp white wine vinegar
- 1 small garlic clove, crushed
- 1 tbsp picked oregano leaves
- 5g parsley leaves, roughly chopped
- salt and black pepper

METHOD

1. Preheat the oven to 220°C fan.
2. Mix the eggplants in a large bowl with 1/2 teaspoon of salt. Transfer to two large, parchment-lined baking trays and then brush with 70ml of oil: you want it on both sides of the discs. Bake for 35 minutes, until dark golden-brown and cooked through. Remove from the oven and set aside to cool.
3. In a small bowl whisk together anchovies, vinegar, garlic, 1/8 teaspoon salt and 1/4 teaspoon pepper. Slowly pour in remaining 2 tablespoons oil, whisking continuously, until combined.
4. When ready to serve, finely chop the oregano and place in a large bowl along with the aubergine and parsley. Pour over the anchovy dressing, gently mix and transfer to a platter or bowl.



BONUS RECIPE

Sambal Tomat Ulek (Balinese Tomato Sambal)

Suggested use: over oven roasted or barbecued eggplant disks. 2 servings 30 minutes

INGREDIENTS

- 7 pcs shallots (chunk cut) - 5 pcs garlics (chunk cut)
- 2 pcs long red chilli (chunk cut)
- 4 pcs hot chilli (*optional)
- 1 big tomato (wedges)
- 1/2 tsp shrimp paste (crumbled) - use Oyster sauce as an alternative - 1/2 tsp salt
- 1 pinch of pepper powder
- 1/2 tsp palm sugar (crumbled)
- 1/2 kafir lime (juice)
- 300 ml frying oil / coconut oil

METHOD

1. Heat a pan and fry shallots, garlic, chillies, and tomatoes until thoroughly cooked (approximately 6-8 minutes over medium heat). Strain the mixture and set it aside.
2. Use a mortar and pestle to grind all the ingredients until they form a smooth texture.
3. Add salt, pepper, shrimp paste, palm sugar, and kaffir lime juice. Adjust the seasoning to taste.



Winchelsea Senior Citizens Club

Elaine Atkinson

The Winchelsea Senior Citizens Club continues to be a welcoming hub of activity, connection, and good humour in our community. Whether you're looking to learn something new, share a skill, or simply enjoy a chat and a cuppa, there is always something happening at the Club.

Bridge morning

We're especially looking forward to our upcoming Bridge morning on Tuesday 21 April from 10:00 am to 1:00 pm, with lunch to follow. Members of the Colac Bridge Club will be joining us, and it promises to be a relaxed and enjoyable morning. Whether you're an experienced player or just curious (particularly if you enjoy Euchre or 500), you're very welcome to come along, sit in, and see what it's all about.

Our members are always open to new ideas. If there's interest in activities such as Canasta or anything else, we'd love to hear from you—the Centre is here for everyone.

Activities

Our weekly program offers something for everyone:

- **Monday (1–3pm): Craft and Repairs**
A wonderful group of talented members who are happy to help with repairs for the community. From sewing on buttons and taking up trousers to repairing knitted or crocheted items—even clock and watch repairs—this group is a fantastic local resource.
- **Tuesday (10:30am – 12noon): Bridge**
Friendly games with plenty of support for beginners.
- **Wednesday (10–11am): Exercises**
Coordinated by Hesse Rural Health.
- **Wednesday (1–3pm): Cards, games and carpet bowls**, followed by afternoon tea and a raffle.
- **Thursday: We are considering introducing Mahjong (1–3pm)**, with a bring-your-own lunch at 12 noon. Please contact Jean if you're interested.
- **Friday (1–3pm): Cards, games and carpet bowls again**
- Always a lively afternoon!

Each month, we also host a community lunch, ranging from BBQs to fish and chips, another great opportunity to get together.



Following a successful trip to Warrnambool during Positive Ageing Month last year, we're keen to plan more outings in the future.

Recipe

For something to warm you up as the cooler months approach, here's a simple favourite:

Chicken & Corn Soup

Ingredients

Combine 1 litre chicken stock,
1 can (420g) creamed corn, and
1 cup shredded chicken.

Method

Bring to the boil, simmer for 5 minutes, then slowly stir in a whisked egg to form ribbons.

Add soy sauce and pepper to taste—easy and delicious.

In recent weeks, congratulations go to Ken and Elaine, winners of our 500 cards, and to Chris, who took home the raffle prize. As always, there were plenty of laughs along the way—and even a lively discussion about over-60s dating sites ... who knew!

The Senior Citizens Centre in Harding Street truly belongs to the community. It's a place to connect, share stories, learn new skills, and enjoy good company.

"Come along, stay connected, and enjoy the friendship that makes our community so special."

For more information, please contact:
Jean Shinnars (Secretary/Treasurer)
0427 672 263



Chris Gibbs, Jean Shinnars - Raffle time



Chris, Jean, Ken, Lorraine and Margie - Afternoon tea time



Bridge morning brings fun, strategy, and social connection to Harding Street

Elaine Atkinson

Even if you have not played it before, or are a serious player, come along to this Bridge morning and try your hand

A welcoming morning of cards, camaraderie, and mental stimulation will take place on Tuesday, 21 April 2026, at the Senior Citizens Club in Harding Street, from 10:00 am to 1:00 pm, followed by lunch.

Members of the Colac Bridge Club will join local players for a relaxed and enjoyable session of Bridge—an engaging card game known for its blend of strategy, teamwork, and skill. The event is designed not only for experienced players but also for those curious to learn more.

This social gathering offers a perfect opportunity for locals who already enjoy games like Euchre or 500 to explore Bridge, often described as a natural progression with added depth through its bidding system. Beginners are especially welcome to observe, participate, and learn in a supportive environment.

Organisers hope the event will spark ongoing interest, with the potential to establish a regular social Bridge competition in the future between the towns.

The Senior Citizens Club already hosts a regular Bridge session every Tuesday morning and warmly welcomes new players. Friendly members are always on hand to help newcomers learn the game.

Beyond cards such as Euchre, 500 and Bridge, the Club offers a vibrant weekly program including carpet bowls, monthly lunches, and group trips—creating valuable opportunities for social connection and community involvement. Membership is open to those aged over 50, at a nominal fee of just \$5 per year.

COME & TRY BRIDGE!

A Fun, Friendly Morning of Cards & Connection

 Tuesday 21 April 2026
 10:00 am – 1:00 pm
 Senior Citizens Club, Harding Street
 Lunch to follow

Join Us for a Great Morning!

Members of the Colac Bridge Club will join local players for a relaxed and enjoyable session of Bridge — a game of strategy, teamwork, and fun.

New Players Welcome!

Never played Bridge before? That's perfectly fine!

If you enjoy Euchre or 500, you'll love Bridge.

- ✓ Sit in and watch
- ✓ Learn as you go
- ✓ Friendly players will help you

Play Every Tuesday

We already play every Tuesday morning and warmly welcome new players.

If there's enough interest, a **regular social competition** may begin between Colac, Birregurra and Winchelsea.

About the Senior Citizens Club

A welcoming community offering:

- Cards (Euchre, 500 & Bridge)
- Carpet bowls
- Monthly lunches
- Trips and social outings

We are looking to introduce Mahjong shortly and happy to introduce other games if sufficient interest

💰 Membership just \$5 per year (50+ years)

Contact

Elaine Atkinson
 0458 009 616
 eatkinson048@gmail.com

Come along, meet new people, and enjoy a great morning!

Whether you're an experienced card player or simply looking to try something new, this event promises a morning of fun, friendship, and mental challenge.

For more information, please contact:

Elaine Atkinson
0458009616
eatkinson048@gmail.com

Winchelsea Taxis is now Surfcoast Taxis

Our fleet of vehicles are growing to all late models and we are covering an extended area including Winchelsea, Colac, Bannockburn, Inverleigh, Great Ocean Road and Geelong.

We have a fleet of 10 seater Maxi Vans, all with capacity to carry wheelchairs.

Surfcoast Taxis Pty Ltd
All Bookings: 0408 325 992
Fax: 5267 2699
Email: bannotaxis@gmail.com
(Admin or Stan 0429 672 888)
66A Batson Street
Winchelsea 3241



Accounts NDIS provider. TAC, DVA etc

NDIS provider number 4050001044
NDIS provider number 4050001048



Dr. Kale Mazurek

Winchelsea's local independent osteopath for simple & effective musculoskeletal treatments.

0417 114 617
www.kalemazurek.com
osteo@kalemazurek.com

Mon 3:30 pm - 7:30 pm
Thurs 10:15 am - 8:00 pm



JUMBLE SALE

BARRABOOL HILLS
UNITING CHURCH

1135 BARRABOOL ROAD
(cnr Andersons Road)
BARRABOOL

SATURDAY 18th April 2026

1PM

COME AND
CHECK US OUT

FOR MORE INFO

0418 518 260



Winchelsea Community Market

First Sunday on the Month (except November)



Shire Hall
9am to 1pm

Upcoming Dates:

July 6th	Nov 9th (2nd Sunday)
August 3rd	Dec 7th
Sept 7th	Jan 4th
Oct 5th	Feb 1st

Food, Produce, Coffee, Plants, Crafts
Homewares, Candles, Bags, Skincare
Jewellery, Soap + Baby Goods

Stallholders - Contact via Growing Winchelsea Inc Website
(Scroll Down to Market)

M&B WOOD PLUMBING

Call Matt - 0418 319 357

mbwoodplumbing.au

Servicing Winchelsea & surrounds

- General maintenance & blocked drains
- Gas fitting & hot water service upgrades
- New homes & renovations

The skills you already have, can help you make a positive impact as a Prison Officer.

Discover a rewarding and secure career as a Prison Officer. Apply now and receive an \$8,000 sign on bonus.*



Corrections
Victoria

Hiring now

*Conditions apply.



Authorised by the Victorian Government,
1 Treasury Place, Melbourne



Conquer the Corrugations 2026

Robyn Black

Conquering the Corrugations still giving support to help overcome life's bumps in the road.

The 2026 Conquer event, held across March 28 and 29, once again brought together a small but energetic group of participants from across Australia, including an attendee who travelled from Darwin for her second year.

Despite its modest size, the event delivered a strong sense of community, connection, and purpose. Participants embraced the weekend with enthusiasm, continuing to build on the spirit that has defined Conquer over the past four years.

Saturday's activities concluded with a relaxed dinner and catch-up at the Barwon Hotel, giving everyone a chance to unwind, share stories, and celebrate the journey together. We were privileged to have guest speaker Tony McManus.

After his brother Mick tragically took his own life, Tony became a passionate advocate for mental health. He was instrumental in establishing the AFL's Beyond Blue Cup and is a National Ambassador for Beyond Blue and a Community Ambassador for R U OK?

Special mention and thanks to the dedicated local emergency services and organisations, including Winchelsea CFA, Winchelsea Lions, Winchelsea SES, Hesse Rural Health, Geelong Coast Hire, Winchelsea Op Shop, Winchelsea Combined Churches, Bendigo Bank and Maguires Butchers, for their valued support and contribution to the event.

Their generosity helps keep Conquer a free event and ensures it remains part of the community.

The Conquer committee would like to acknowledge every volunteer, participant, and supporter who has contributed to making Conquer what it is today.

Thank you to everyone involved for making four years of Conquer possible.

Plans are already in place for the next event, with Conquer set to return in 2027.

Conquer the Corrugations aims to support those who have lost a loved one whilst raising awareness.

Email conquerthecorrugationsvic@gmail.com
 Messenger Conquer the Corrugations - Victoria



Don Smith, Sam Inglis, Charlie Colleen, Robyn Black

WINCHELSEA
**Osteopathic
 Clinic**

- ✓ Neck & back pain
- ✓ Shoulder pain
- ✓ Headaches
- ✓ Sciatica
- ✓ Sporting injuries



Ph: 5267 2948 | 34 Main Street, Winchelsea (within *The Exchange*) | Book online: winchelseaosteopathicclinic.com.au



The Ripple Effect

A space for the issues that start small but matter deeply—because in every community, even the quietest ripple can create real change.

Corellas in Winchelsea

They're Back!!! Tell us if you think we are close to getting on top of the problem. Editor

Following recent commentary from Surf Coast Shire, it's clear that the challenges posed by corellas in Winchelsea are not being ignored—and that deserves recognition.

Council has outlined several thoughtful and environmentally responsible measures already underway. From planting strategies designed to reduce open, attractive roosting spaces, to the installation of a peregrine falcon nesting box, there is a clear intent to work with nature rather than against it. They are not quick fixes but grounded in long-term thinking and legislative reality.

Other councils have trialled more direct deterrents, though these come with limitations, particularly in township settings like Winchelsea. There are no perfect solutions here, only a balance of trade-offs between effectiveness, compliance, and community tolerance.

All approaches matter. Corellas are a protected species, and any response must operate within those constraints. The work being done reflects both creativity and care, particularly in partnership with local groups contributing to planting and habitat changes.

But acknowledging effort doesn't mean the issue is resolved.

It raises a fair question though: is it enough?

Because while innovative strategies are implemented, the damage continues. Walk down the main street and it's hard to ignore—trees stripped bare, some beyond recovery and considered sacrificial trees. These aren't just plantings; they are part of the town's character, its history, and its environmental resilience.

Which brings us back to something within our control: our collective voice.

So far, we've talked about the issue. We've shared concerns in passing. But have we been loud enough—clear enough—united enough to drive stronger action?

Because this is what community-led change looks like. Not just raising a problem once but continuing to show that it matters. Individually and collectively.

If we want different outcomes next season, we need to start pushing for them now—clearly, consistently and collectively. That means backing what works, questioning what doesn't and making sure this issue stays firmly on the agenda.

Because the corellas will be back. The real question is whether we'll still be reacting—or finally getting ahead of this nationwide issue.

Every ripple starts somewhere—now it's time to turn ours into a wave that compels more action from council and beyond – this is impacting Rural Australia. What do you say?

Email Letter to the Editor at editor@winchelseastar.org.au

Nathan Harvey is fundraising for the Special Olympics

Kim Harvey

Congratulations, Nathan on your selection to represent Australia in your special class at the 2026 Special Olympics Australia National Games. Editor

My name is Nathan Harvey from Buckley, Victoria. I am visually impaired and autistic. I'm fundraising to support my sporting journey to represent Australia at the Special Olympics.

At my last Special Olympics in Dubai, I won 2 x gold and a bronze medal in dressage. I am now raising a levy to cover travel, accommodation, and training. We do not receive any government funding.

You will find a lot of information about me on Google, Nathan Harvey Equestrian.



We're aiming to raise the initial levy of \$ 3,000 to help cover costs such as travel, equipment, and competition expenses.

If you've ever thought about supporting me, now is a great time to give. Donations of \$2 or more are tax-deductible.

If you'd like to support before June 30, you can donate here: <https://asf.org.au/campaigns/nathan-harvey/support-a-champion-s-dream--help-nathan-s-journey-to-the-special-olympics>



Winchelsea Community Dinner - A gathering for everyone

Jess Butler

Once again, the Winchelsea Community Dinner has proved to be a great success. Don't forget, all are welcome. *Editor*

Our March community dinner was once again a hit, bringing together a range of community members for great conversation, fun and of course wonderful food. Its always a delight to see new faces and we had a couple of extra families with kids join us this month, which was exciting for the other children attending also.

There's always interesting conversation to be a part of, whether its local happenings, what's growing in the garden, exchanging recipes, local history, swapping parenting tips or a myriad of other topics. This month there was a great discussion about collectible items – such as records and old books. A number of stories from peoples lives were also shared including journeys of families over time and generations and exchanging of special memories.

As usual we had a great selection of food with something for all tastes. It's great to see people try each other's cooking and so nice to be able to help yourself to whatever you'd like to eat. Our produce swap table has been a great addition to the dinners, available for swap or a donation were a range of locally grown vegetables, eggs and seeds.



YOU ARE INVITED TO
WINCHELSEA
COMMUNITY DINNERS

LAST SATURDAY OF EACH MONTH

February 28th	July 25th
March 28th	August 29th
April 25th	September 26th
May 30th	October 24th
June 27th	November 28th

6.30PM HALL ON CORNER OF
MERCER & HARDING STREETS

PRODUCE SWAP TABLE
CHILDRENS ACTIVITIES

PLEASE BRING FOOD TO SHARE
IF YOU ARE ABLE
GOLD COIN DONATION AT DOOR
MORE INFO- JESS 0409536752

If you haven't made it to a dinner yet, please don't be shy. We'd love you to join us and we'll always have room for more people at the table. We can't guarantee you'll have the same seat for the night though, there's often a bit of musical chairs as everyone is friendly and keen to chat with others so we tend to move around to have conversations with different groups of people. This sense of community and connection is one of the things I've enjoyed most about the dinners. It's a special feeling to know you can move around different tables and will always be welcome and included in the conversation, even if you've never met before. I imagine it's an extension of the friendly hellos and waves from Winchelsea locals as people walk around the streets, which is something I value about our wider community.

Big thanks as always to those who contribute in a variety of ways that make this event possible – our dedicated volunteers, Kenty's Bakery and The Winchelsea Star. Also to St John the Baptist Catholic Church for allowing use of their hall at a very low cost. On a final note, we've heard there's often some questions about different elements of the dinners from people who might not have made it along yet, so I've included an FAQ section at the end of the article.

We hope you can join us at our next dinner – Saturday 25th April 6.30pm at the hall on the corner of Harding and Mercer streets.

Kids at Community Dinner

While there were board games and blocks available, this time the children here decided to make paper aeroplanes then throw them at each other while chasing. It was lots of fun. I liked the chicken risotto and garlic bread. It was good to see by the end of the dinner every child knew each other's name and a few things about each other. Towards the end the children got a bit tired. But over all they had a great time.

By Jaylee

I like it when kids come to the dinner to play games. Games I like are paper planes, magnets, colouring and drawing. And the food is very nice.

By Jett

Your Questions Answered

Who organises and runs the dinners? The dinners are organised and run by local community members who volunteer. We have a range of jobs, interests, beliefs, opinions and ages. We were brought together by our passion for community connection. We are not a part of, or even affiliated with any organisation or official group. Just Winch locals, making something happen, following in the footsteps of many Winchelsea residents who have done similar before us.

Why do you use a church hall for the dinners?

We explored lots of options when looking for a venue. Our requirements were –

- Minimal cost (as we are hoping to eventually cover this from the gold coin donations we collect at dinners)
- Use of kitchen, tables and chairs
- Having a guaranteed consistent date of the month available that we could book for the whole year
- Sufficient space for the dinners to grow over time

We had trouble finding somewhere that suited, before we thought to ask about the Catholic Church hall which had been used by other groups. When we explained what we wanted to do, the parish was happy to provide a venue that met the requirements we had and were happy to accept a donation each month for use of the venue rather than charging us a per hour rate.

What if I can't or don't cook? What if I can't bring food to share?

Everyone is welcome regardless of whether you can bring something – there's always plenty to go around. If you don't feel confident with cooking (or don't have time) but would still like to bring something, simple things are often very popular and help round out the meal. Why not bring a simple salad, a tub of vanilla ice cream, some cut up fruit, heated pre prepared finger foods like party pies or some antipasto items.

Why does the dinner start at 6.30pm? What if my kids need to go to bed early?

The dinners start at 6.30pm so they don't interfere with mass at the church which is also held on Saturday evening. We start the



meal pretty soon after 6.30pm and there's no obligation to stay, so feel free to enjoy a meal and head off to put little ones to bed if that's what you need to do. If you'd like to stay for dessert but need to leave early, just let us know and we can make sure to serve dessert before you need to leave.

Can people who don't live in Winchelsea come?

Absolutely, everyone from Winchelsea and surrounding communities or those that have some connection to Winchelsea such as extended family and friends are welcome to join us.

Message us on facebook @Winchelseacommunitydinner or call or text Jess 0409536752



Winchelsea Star COMMUNITY NOTICEBOARD

email editor@winchelseastar.org.au or
leave a note at Winchelsea IGA

HUGE GARAGE SALE

Sat 18th April - 20 McDonald Dr
8:30am-2:30pm
Furniture, Indoor/Outdoor Goods, Toys
Large Variety of Items - Bargains Galore!

PINE CONES FOR FIRE PITS \$5

Winchelsea Lions Club
Contact Ray 0406 371 239

WINCHELSEA PICKLEBALL

Wednesdays 7pm at Winchelsea Leisure
Time Centre! \$5 All equipment supplied
Wear suitable footwear
Lesley Mathison 0438 672 197

RAM FOR SALE

\$370.00 OBO
Contact Trevor 0410 165 346

WINCHELSEA TENNIS CLUB

JUNIOR COACHING
Mon 3.30pm \$10
with experienced coach
Nicole Mullen

1ST MODEWARRE SCOUT GROUP

We have exciting programs for Joeys,
Cubs and Scouts this year.
We have vacancies
at Joey and Cub levels,
and plenty of room at Scouts.
Group Leader Marie McPadden
0409 330 147

PAPER RECYCLING

Paper depot rear of
Senior Citizens
Rooms
Harding Street
NEWSPAPERS
MAGAZINES
PHONE BOOKS



All money raised used
for local community
4224 0226

Look what you can get at the Winchelsea Community Op Shop



THE WINCHELSEA
COMMUNITY OP SHOP
Fri, Sat, Sun, Mon 10am - 3pm
10 Willis Street, Winchelsea

The Op Shop is a lifeblood of the
Winchelsea community, providing
great friendships to the passionate
volunteers and our many customers.

At the moment, the Op Shop CANNOT
accept donations of DVDs, CDs, books,
hiking bags, backpacks, duffle bags,
suitcases, and cases.





Free school holiday fun

Victorian Government

Now is the time to introduce children to the many tourist attractions right across Victoria. *Editor*

The State Government is supporting free school holiday activities for families at leading cultural attractions and tourism destinations.

Melbourne Zoo, Werribee Open Range Zoo, Healesville Sanctuary, Kyabram Fauna Park

At Melbourne Zoo, families can see the only snow leopard cubs in Australia, the Zoo's giraffe calves and Dinos at the Zoo. Kids under 16 can visit Melbourne Zoo, Werribee Open Range Zoo, Healesville Sanctuary and Kyabram Fauna Park free.

Melbourne Museum and Scienceworks

Families can explore exhibitions and hands-on experiences at Melbourne Museum and interactive STEM fun at Scienceworks.

National Gallery of Victoria and The Ian Potter Centre: NGV

Art lovers can take part in free exhibitions and workshops at the National Gallery and The Ian Potter Centre: NGV Australia.

Chelsea Australian Garden, Olinda and Royal Botanic Gardens, Cranbourne

Nature lovers can explore the Chelsea Australian Garden at Olinda and the Royal Botanic Gardens Cranbourne, free entry.

Koala Trail near Paynesville

Families can visit the Koala Trail on Raymond Island near Paynesville to spot native wildlife.

Metro Tunnel Passport Challenge

Families can visit all five new stations and collect stamps along the way.

Parents urged to vaccinate under-fives this flu season

Vaccinating your child against influenza before the flu season strikes will help keep them safe from that illness this year. *Editor*

DHHS

While vaccination is recommended for anyone aged six months and older, Victorian CHO Dr Caroline McElnay warns it is especially critical for children under five, who are more likely to experience severe flu symptoms that may require hospital treatment. For our youngest children, the flu can be far more serious than a few days at home unwell – it can be life-threatening.

“Vaccinating kids under five is one of the most important things families can do to keep them healthy and out of hospital this winter. Flu vaccines are completely safe, effective and free for children under five years,” Dr McElnay said.

The flu vaccine is free for at-risk groups including children aged six months to five years, people over 65 years, pregnant women, Aboriginal and Torres Strait Islander people, and people with medical conditions that put them at increased risk of severe flu.

Dr McElnay said getting vaccinated early provides the strongest protection against serious illness as flu activity increases heading into winter. “The earlier you get vaccinated, the better your protection will be as we move into winter. A quick appointment now can make a big difference to your health and the health of those around you.”

It's important to get vaccinated against influenza every year as the virus changes throughout the year changes and new vaccines are developed for the following winter season, she added. “Having an annual flu vaccine will not only reduce your chances of catching the flu but also reduce the severity of your illness if you become infected.”

The vaccine is available across general practices, pharmacies, local council immunization clinics, Aboriginal Health Services and often at workplaces.

Flu vaccines can be given at the same time as other National Immunization Program vaccines, such as the free maternal RSV vaccine, whooping cough and the COVID-19 booster.

As well as vaccination, simple steps can help stop the spread of respiratory illnesses such as hand washing, coughing or sneezing into your elbow, wearing a mask, and staying home when sick.

More information on flu vaccination is available on Better Health Channel.

1st Modewarre Scout Group News



Scouts
AUSTRALIA

Marie McPadden OAM, Group Leader
mcpadden630@bigpond.com

The Scout group learn independent living and other life skills on a camping trip at Patanga Park Scout camp, Barongarook

As an introduction to Scout camping, we took five Scouts to stay at Patanga Park Scout camp at Barongarook over the long weekend.

Arriving on Friday night, it was time to work out exactly how that tent went up, without parents there to assist. The Scout program is based on learning by doing and what better place to start than setting up camp. Once sleeping tents were up and bedding in, the kitchen and eating area needed organising - setting up the gazebo, tables and stools, and learning about gas fittings, lighting kits, hands washing stations etc. Team work and communication are important in these situations, and the Scouts rose to the challenge.

After a good night's sleep it was up to make and eat breakfast, only to find out that there was no more food in camp! The Scouts had to work out their menu for the rest of camp, and from there, a shopping list. The Leaders then took them into Colac to shop.

On return to camp, the Scouts prepared their lunches and snacks for an afternoon hike. We drove out to Kawarren and hiked the Old Beechey Trail back to Barongarook and into camp. It was a distance of just over 10km, with an elevation increase of 285m. The trail is very pretty with little noise impact from the nearby road and is dotted with informative signs about the old railway line.

Spag Bol was cooked for tea, but individually on metho fuelled Trangias. This was a new experience for all of the Scouts (and 1 Leader), but everyone did very well and ate a tasty, filling meal. Finishing the day with some fun, we headed into the Colac Bowling Alley. A lucky straw hat and sunglasses seemed to be the key to some good scores!

Sunday was a slow start (Scouts sleep way longer than Cubs!). After sorting out breakfast, camp had to be pulled down and packed up – another opportunity for teamwork and learning new skills.

The Scout Section is a journey of self-discovery, leadership, teamwork and community involvement. We take many roads, depending on the interests of our Scouts, and have fun along the way.



Old Beechey Rail Trail



GIRL GUIDES
AUSTRALIA

SEEKING NEW VOLUNTEER LEADER/ UNIT HELPER FOR GUIDES



The Winchelsea Girl Guides are sad. Recently they lost their leader, Lily Del Rennie, who was farewelled last Monday. We wish Lily all the best with her studies and career.

The Guides must have two adults present at meetings. Guiding provides training for this vital role, and covers any expenses.

Please help us provide leadership development opportunities for girls, as well as promoting fun and friendship in a safe environment, helping girls grow into confident, self-respecting, responsible community members in a world-wide organisation.

Also a great opportunity for self-development, meeting new friends, and also opportunities for overseas travel.

If you are remotely interested, please contact Yvonne Orchard Ph 0488 672 630.

We would also welcome new girls to join our Unit. Come and try for 3 free meetings. Girls 5-15 yrs welcome!

We will commence next term on the first day of term Mon 20 April, 4.30-6pm at the Catholic Hall Harding St

(Please note there will be no Guides the following week Mon 27, as Leader not available)

Enquires contact Yvonne Ph 0488 672 630

Services & Activities In Winchelsea

VLINER TRAIN SERVICES TO MELBOURNE:
 Mon - Fri 06.41 (coach) 08.07 11.10
 14.04 16.58 19.21
 Sat - Sun 08.27 10.27 14.04 16.58
 19.17

TO WARRNAMBOOL:
 Mon - Fri 08.58 11.51 14.46 17.28
 (coach) 18.42 20.52
 Sat - Sun 09.44 11.41 14.46 18.38
 20.38

SURF COAST MOBILE LIBRARY
Cnr Princes Highway & Hesse St, Fridays, 2pm-5pm
 Parked in Hesse Street (outside Shire Hall)
 Fridays 2:00 and 5:00pm unless it is a Public Holiday.

WINCHELSEA GIRL GUIDES
 All girls 6yrs-15yrs Welcome!
 Mondays 4.30pm-6pm (school terms)
 Catholic Church Hall, Harding St Winchelsea

Fun, friendship, and adventure. Teamwork, leadership skills, achieve goals, improve communities and grow in confidence.

3 FREE sessions to come along and try.
 Yvonne 0448 672 630 or Lily 0428 936 441


COUNTRY WOMEN'S ASSOCIATION
 7pm second Wednesday of month
 Winchelsea Senior Citizens' Hall
 36 Harding Street Winchelsea

WINCHELSEA PLAYGROUP
 Every second Thursday 10am-12pm
 St Thomas Anglican Church Hall
 cnr Barwon Tce and Hopkins St, Winchelsea
 Contact: Danni Menzies 0432019944
 winchelseaplaygroup@gmail.com
 Facebook - Winchelsea Playgroup 2019
New families welcome


1ST MODAWARRE SCOUT GROUP
 Modewarre Hall, Cape Otway Rd
 Mon-Cub Scouts 8-11yo 6:30-8pm (sch term)
 Tues-Joey's 5-8yo 5-6pm (sch term)
 Wed-Scouts 11-14yo 6:30-8:30pm (sch term)
 Venturers 15-18yo hosted by Torquay or Highton Units
 Marie McPadden 0409330147


 Winchelsea and District
COMBINED PROBUS CLUB
 Senior Citizens Rooms,
 New members always welcome.
 Enquiries Lorraine 0417 467 927

WINCHELSEA TRANSFER STATION
55 Cressy Road, Winchelsea
 Tuesday 2pm-4pm
 Saturday 1.30-3.30pm
 Thursday 2pm-4pm
 Sunday 9.30-12.30pm
 Closed Christmas Day, but open on other public holidays.
 www.surfcoast.vic.gov.au/disposalsites

Join us. A role for everyone

Nationally accredited training to help our community.
 Pop in to meet your crew **Wednesdays 7:30pm**

 Winchelsea Unit 325 Mousley Drive **132 500**

Winchelsea Men's Shed

For the Community

NEW MEMBERS WELCOME
 Every Wednesday 9.30am
 51 Hesse Street, Winchelsea

KINDLING/OFFCUTS \$7.00 bag
 Pickup Wednesdays 9.30-2.30
 Delivery, Bill 0438 083 373

NESTING BOXES
 Birds/animals

NEED A JOB DONE?
 Woodworking, Furniture Repairs
 Call in Wednesdays to order

Ray Atkinson (Co-ordinator) 0407839139
 winchmenshed@gmail.com


WINCHELSEA MOVIE CLUB

Have you thought about joining the local Movie Club?
 Winchelsea Movie Club enters its ninth year of bringing affordable, entertaining movies monthly to the Globe theatre.

Membership is essential -
 10 screenings annually - \$70 Conc \$65
 5 screenings Autumn /Spring seasons - \$40 Conc \$35

WHEN -
 Movies will be shown third Thursday of each month (except July) at 7.30
 Come early.

WHERE -
 The Globe Theatre
 17-19 Willis Street Winchelsea
 Opp Winchelsea Tavern (Top Pub)

Membership can be paid by CASH on the first night February 19th or by direct debit to bank account.
 Enquiries re bank account details to email - movies@growingwinchelsea.com
 Jenny 0409672054 Sue 0413487915
 Further information about the Movie Club - www.growingwinchelsea.com

Movie List for 2026
 16.4.2026 One Life
 21.5.2026 Roofman
 18.6.2026 Gifted Hands
 BREAK
 20.8.2026 Rachael's Farm
 17.9.2026 The Book Thief
 15.10.2026 Mr Burton
 19.11.2026 My Favorite Cake
 10.12.26 Thelma

history of winchelsea

21 Mercer Street – Former bootmaker’s shop and dwelling

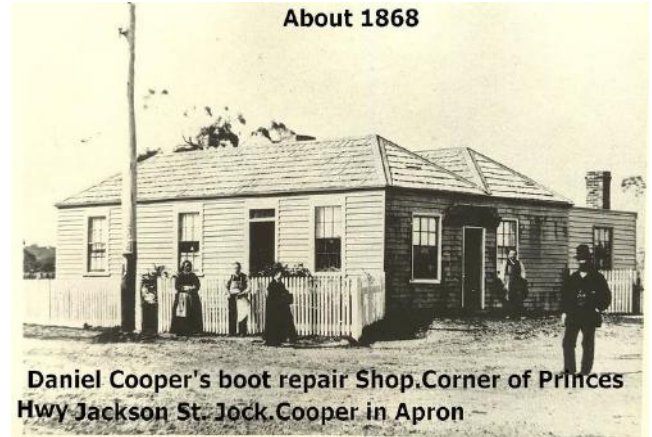
Back then we didn’t have to send away for shoes, we had our own Winchelsea bootmakers. Editor

In colonial times delivery from big cities such as Melbourne, Ballarat or Geelong took several days. Shipping imports from overseas took several months. Today, the average Winchelsea resident can easily drive to Waurin Ponds, where Kmart has a large selection of shoes made in China, buy a pair for under \$15 and be home in time for dinner. In colonial times importing shoes from China would have been considered an unimaginable luxury for most people, and imported goods were expensive items. Boots were custom made for the wearer, and every colonial town had its own boot maker. Leather would have been procured from a local tanner (as remembered in places like ‘tanner’s road’ just south of Winchelsea). The tanned hides would have been sourced from the surrounding cattle farms. Nails would have been made in the local blacksmith, and the laces were made of leather cut from the hide. The entirety of the boot was made from the local country to the local foot without ever leaving the area. Small industries such as this were the mainstay of any regional town’s economy.

The former bootmaker’s shop and dwelling at 21 Mercer Street, has significance as one of the earliest-surviving buildings in the central Winchelsea area, and particularly one of the earliest timber buildings in the township and is one of few surviving 19th century timber buildings in the town. Built in c.1867 as David Cooper’s bootmaker’s shop and dwelling, the building is a representative example of a Victorian style of moderate integrity. It is a physical legacy of the initial developments in Winchelsea after the mid 19th century when the town became an early centre for commerce, education, postal services and social activities, and the retirement location for a number of people from the land. The building appears to be in fair-good condition when viewed from the street. It is associated with some of the earliest building developments in the central township area after the mid-19th century. The former bootmaker’s shop and dwelling have long-term associations with the Cooper family, local bootmakers. First established in c.1867 by David Cooper who emigrated to Victoria with his family in 1857, the business was carried on by Cooper’s son, Joshua, which in turn was taken up by Joshua’s son, Joshua Daniel (Jock). Another of David Cooper’s sons, Daniel Matthews Cooper, had also established a bootmaker’s shop at the corner of Willis and Jackson Streets in the 1860s, although it was Cooper’s other son, Joshua, who remained in Winchelsea and continued the family business.

Jane Cooper, David’s Widow, left her estate to David Matthews Cooper, storekeeper, and Joshua Cooper, bootmaker who were the executors named in and appointed by her will on 10th of

June, 1867. The family can be seen standing outside of Daniel Matthews Cooper’s bootmaker shop the following year.



Cooper’s Bootmaker, Jackson Street
Image Credit – Winchelsea and District Historical Society



Corner of Jackson St and Princes Highway today.



Mícheál P O’Dhonnabháin has lived in the Winchelsea area since 2010.

Michael completed a Bachelor in History and Anthropology and a Master of Cultural Heritage at Deakin University, then went on to complete a PhD at Federation University, focusing on colonial and European collections of Indigenous Australian Cultural Heritage. Michael lectured at Federation and Monash Universities, lecturing in World History, Folklore Studies, Indigenous Studies and literary studies. Michael has worked in museums and cultural collections across Victoria, and can usually be seen in and about Winchelsea with his wolfhound.

All About

Mowers & Chainsaws

Repairs to all makes and models of ride on mowers, domestic mowers, pumps, chainsaws, brushcutters and small engines.

Trading Hours: Mon - Fri 8am - 5pm Saturday 8am - 12 noon

5267 2266 Cnr Princes Hwy & Lennox St Winchelsea

www.allaboutmowers.com.au
accounts@allaboutmowers.com.au

FERRIS COX STIHL BRIGGS & STRATTON VICTA

5234 6585 0417 385 984

For all your domestic & stock water.

Also available for road and civil construction

Local owned and operated.

Winchelsea Star

This week's Edition

Editor Carrie Forgan, Designer Susan Corby



Next Production Coffee Meeting Sat 25 April
9am @ SWEET THYME All Welcome!

send your stories

news@winchelseastar.org.au

LOCAL NEWS and ARTICLES
WELCOME

Email news@winchelseastar.org.au
or leave hard copy at IGA supermarket

News Deadline

5pm Fridays

4pm Sundays - hard copy left at IGA

6pm Sundays - sports results and
weekend events

EDITOR 5273 0295

Leave a message

ADVERTISING 5273 0294

advertising@winchelseastar.org.au

free online subscription

www.winchelseastar.org.au

facebook.com/TheWinchelseaStar

production

Editors: Carrie Forgan, Yvonne Stevens, Judy Cameron

Advertising: Sasha Gauntlett, Neil McInnes

Design: Susan Corby, Tony Phelps

Printed by: Cromwell Forganssen,
Winchelsea Community House

Website by: Winch Websites

committee

President: president@winchelseastar.org.au
Neil McInnes

Treasurer: treasurer@winchelseastar.org.au
Cathy Cheadle

Secretary: secretary@winchelseastar.org.au
Tony Phelps

Members: Mick O'Mara, Linda Carter, Susan Corby
Sasha Gauntlett, Judy Cameron,
Yvonne Stevens, Carrie Forgan



© Winchelsea Star Org. Inc. All rights reserved
Winchelsea Star Organisation Inc.
Reg. No. A0053999F ABN 75 941 529 279
winchelseastar.org.au PO Box 5 Winchelsea 3241
Views expressed are not necessarily those of the
Winchelsea Star or Committee. The Winchelsea Star
reserves the right to edit or not publish any article.
Vectors Freepik.com



Café La Hoot

have you tried
'owl' coffee?

1 willis st cafelahoo@gmail.com 0407 528 999

WINCHELSEA
CONCRETING

• Driveways • Sheds • Decorative Concrete • Raft Slabs

Robert Murphy

0438 235 237

winchelseaconcreting@outlook.com

DownRyte Excavations



- Excavations
- Drilling and Piling
- Rock Placement
- Tree and Stump Removal

Sean Hunwick

Mobile: 0409 447 288
Email: downryte@activ8.net.au

direct
TEMPORARY
FENCING

FOR HIRE - SUPPLIED & ERECTED - 7 DAYS
GEELONG - BELLARINE - COLAC - SURF COAST
PHONE CAM 0417 310 800

Stitch It, Don't Ditch It

Winch House Craft Group

Don't throw that article away. Perhaps it can be mended or even repurposed. Bring it along to the Craft Group where you will get help and great advice. *Editor*

The craft group is not meeting over the school holidays, but we will all be working on our projects at home.

Before the break up one of our members made a dust cover for one of the donated sewing machines. This machine is one for use by the community. It sews beautifully and even has some fancy stitches.

The machine has some specialised feet if you want to sew in a new zip or machine sew a button on or a walking foot for quilting.

We have a large box of threads for use, if you are looking for a particular colour come and have a look before you purchase anything new.

Buying a whole new roll of thread just to take up a hem can be wasteful and annoying.



Love the Surf Coast Arts Trail? Become a Trail volunteer!

Surf Coast Shire

Can you become an Arts Trail volunteer? *Editor*

Teams of volunteers are set to enhance this year's Surf Coast Arts Trail experience by providing support for artists, venues and visitors.

Organisers are inviting Trail lovers to register for minimum three-hour volunteer shifts across the weekend.

They will aim to help welcome patrons, support activities and carry out administrative tasks such as tracking visitor numbers and gathering survey responses.

Surf Coast Shire Council will stage the 15th annual Trail 1- 2 August, attracting thousands of people to admire the work and methods of hundreds of artists from hinterland to coast.

Cr Liz Pattison: "Our calling on volunteers is all about magnifying the welcoming warmth of this great event for patrons, and helping free up the star attractions – the artists – to focus more on sharing their art and techniques.

"We would like our volunteer supporters to become just as much a part of the event as the artists, and if you are an art lover what a great way to immerse in your passion for a few hours and help out at the same time.

"Volunteers can be family or friends of participating artists or not have any associations at all, and don't have to live in Surf Coast Shire. They will need to provide working with children certification, we will provide training and assign them to artists and venues."

Volunteers will receive special annual Arts Trail volunteer mementos to remember their experiences and be celebrated at a special thank-you event.

Last year's Trail featured more than 200 artists at 56 venues. More than 15,000 people admired their work, shared their inspiration and generated more than \$210,000 in sales.

Boost for animal care services

These grants have been given to Animal shelters and mobile Vet clinics to support cat rescue organisations. *Editor*

Agriculture Victoria

Second Chance Animal Rescue Craigieburn has been awarded a \$17,620 grant by the State Government as part of Round 13 of the Animal Welfare Fund Grants.

The Government has delivering \$1.61 million to 36 not-for-profit animal care organisations, foster networks, and low-cost veterinary clinics across Victoria to expand services, improve veterinary care, and help more pets find loving homes.

It will help SCAR expand their cat-housing capacity, increasing space to accommodate up to 372 more cats per year. In previous rounds, SCAR received over \$550,000, funding rescuing, rehabilitating, and rehoming displaced and abandoned pets, while also supporting vulnerable pet owners in times of need.



Project Meow Ltd will use their \$32,400 grant to desex almost 300 cats and kittens in Greater Geelong, with microchipping and vaccinations provided as needed.

Give a Kitty a Home Rescue Inc. will use \$130,000 to deliver a mobile veterinary clinic providing low-cost, high-quality care to retirement villages, vulnerable families and rural communities with limited access to vets.

The next round of applications will open later this year. For the list of recipients, visit agriculture.vic.gov.au/livestock-and-animals/animal-welfare-victoria/community-and-education/animal-welfare-fund-grants-program.

What's on Weekly

MONDAY-FRIDAY

WINCHELSEA TOY LIBRARY

9am-2pm (03) 5267 2028
Winch Community House,
28 Hesse St, Winchelsea

MONDAY-SATURDAY

WINCHELSEA HEALTH CLUB

Accessible - 24 hours
Eastern Reserve, 70 Hopkins St
5267 2336

MONDAY

CO-WORKING AND STUDYING SPACE

Mon and Thurs 9am-2pm \$10
Winchelsea Community House
28 Hesse St, Winchelsea
(03) 5267 2028

MAINLY MUSIC

10-11am (school terms)
Interactive Music 0-4yrs
St Thomas' 25 Barwon Tce 0407838256

WINCHELSEA GIRL GUIDES

4.30pm-6pm (School term)
St John's, Mercer /Harding St
Yvonne Orchard 0448 672 630
Lily Dell Rennie 0428 936 441

1ST MODAWARRE SCOUT GROUP

Modewarre Hall, Cape Otway Rd
Mon-Cub Scouts 8-11yo 6:30-8pm (sch term)
Venturers 15-18yo hosted by
Torquay or Highton Units
Marie McPadden 0409330147

VINYASA YOGA

7pm \$25 Winchelsea Shire Hall,
28 Hesse St, Winchelsea
(03) 5267 2028

TUESDAY



Senior Citizens Centre,
36 Harding St, Winchelsea
Elaine Atkinson 0458 009 616

1ST MODAWARRE SCOUT GROUP

Modewarre Hall, Cape Otway Rd
Tues-Joey's 5-8yo 5-6pm (sch term)
Venturers 15-18yo hosted by
Torquay or Highton Units
Marie McPadden 0409330147

WEDNESDAY

WINCHELSEA ZUMBA DANCE

Combined Zumba Fitness and Gold class.
6:30-7:30pm @The Globe Theatre.
Simone Dunmore: 0468 375 036

WINCHELSEA MEN'S SHED

9.30am 51 Hesse St, Winchelsea
Ray Atkinson 0407839139
winchmensed@gmail.com

SENIOR CITIZENS CENTRE

Wednesdays 1- 3.00 pm
36 Harding St, Winchelsea
Jean Shinnars 52672263, 0427672263
jeanshinnars@gmail.com

MOTHER GOOSE SONG AND RHYME

2pm (School term) FREE
Winchelsea Community House,
28 Hesse St, Winchelsea

WINCHELSEA HISTORICAL SOCIETY

Wednesday 1-4:pm, Friday 10am-3pm
Hesse St, Winchelsea

STITCH IT, DON'T DITCH IT!

9.30-2pm Wednesdays
Winch Community House, Hesse St
SEWING MACHINE and
OVERLOCKER AVAILABLE
Gold Coin donation

KIDS ART and CRAFT SESSIONS

4-4.45pm fortnightly Age 5+
\$15 per session or \$60 term
Winchelsea Community House
28 Hesse St, Winchelsea 5267 2028

MEL'S DANCE CENTRAL

Winchelsea Dance Classes
Pre-Schoolers - Adults
Wednesday afternoon/evenings
The Senior Citizens Club,
www.melsdancecentral.com.au

CWA WINCHELSEA

7-8.30pm 2nd Wed monthly
Senior Citizens, Harding St
winchelsea.cwa@gmail.com



SES WINCHELSEA

7.30pm 132500
323 Mousley Dr, Winchelsea



WINCHELSEA MUSIC SEASON

Longing

Helen Ling *soprano*
Zinaida Campion *soprano*
David Stewart *piano*

Will perform a varied programme of soprano repertoire to commemorate the

100TH ANNIVERSARY OF THE
GLOBE THEATRE

As part of the first annual Winchelsea Music Season

Saturday 2nd May 5pm at the Globe Theatre
17 Willis St, Winchelsea, Victoria

Tickets at the door or via Trybooking
Adult \$50 Concession \$40 - School Students Free

For further information
0428 403 784
zinaidacampion@gmail.com

mainly music

est. 1990

Fun, Interactive music sessions for
pre-school children (0-4 y.o.) and
parents/caregivers

When: Mondays from 10 to 11 am
(runs during school terms)

Where: St Thomas' Hall
25 Barwon Tce.

To Enquire ring: **0407838256**

April/May 2026

This is a recurring calendar.
Please confirm event details with the organiser/venue.
To add an event to the calendar,
please email news@winchelseastar.org.au

1ST MODAWARRE SCOUT GROUP

Modewarre Hall, Cape Otway Rd
Wed-Scouts 11-14yo 6:30-8:30pm (sch term)
Venturers 15-18yo hosted by
Torquay or Highton Units
Marie McPadden 0409330147

THURSDAY

CHAT WITH YOUR COUNCILLOR

Cr Tony Phelps
10am-12pm First Thursday of month
Winchelsea Shire Hall 28 Hesse St,

COWORKING AND STUDYING SPACE

9am-2pm \$10 5267 2028
Winch Community House, 28 Hesse St

WINCHELSEA PLAYGROUP

10am-12pm (School term) \$5
St Thomas Hall, 27 Barwon Tce
winchelseaplaygroup@gmail.com

WINCHELSEA PICKLEBALL

10-11.30am
Leisure Time Centre, Gosney St
Lesley Mathison 0438 672 197

WINCHELSEA KNITTING GROUP

10.30am-12pm FREE
Winchelsea Community House,
28 Hesse St, Winchelsea
(03) 5267 2028 (03) 5267 2028

MAT PILATES

6.45pm \$25 Winchelsea Shire Hall,
28 Hesse St, Winchelsea
(03) 5267 2028

WINCHELSEA MOVIE CLUB

7.30 (3rd Thurs each month)
Globe Theatre, Main St, Winchelsea
[growingwinchelsea.com/project/
winchelsea-movie-club/](http://growingwinchelsea.com/project/winchelsea-movie-club/)

FRIDAY

TAI CHI

9am-10am \$10 5267 2028
Winch Community House, 28 Hesse St

COMMUNITY FOODBANK

12-2pm
30 Hesse St, Winchelsea
0417 848 292

PHONICS WITH ROBOT REG

10.30am (1-3 yrs) 11.30am (3-5 yrs)
(School terms)
www.robotreg.com.au/pages/shae

CHATTY CAFÉ

10.30am-12.30pm, Winch Shire Hall,
28 Hesse St, Winchelsea
Gold Coin Donation 5267 2028

WINCHELSEA HISTORICAL SOCIETY

Friday 10am-3pm
Hesse St, Winchelsea

WINCHELSEA SENIOR CITIZENS

Fridays 1.00 pm - 3.00 pm
36 Harding Street, Winchelsea
Jean Shinnars 52672263, 0427672263
jeanshinnars@gmail.com

WINCHELSEA RSL

Back of the Eastern Reserve grandstand
Hesse St, Winchelsea
David Loone 0488 165 109

GEELONG REGIONAL LIBRARY

(MOBILE) 2-5pm
Old Shire Hall, 28 Hesse Street
0408384331 (During scheduled stops)

SATURDAY

PARKRUN

8am Trebeck Reserve
Sussex St, Winchelsea
www.parkrun.com.au/trebeckreserve/

DIAMOND DOT

Senior Citizens Centre,
36 Harding Street Winchelsea
10 till 4 \$5 entry, \$10 includes lunch
Tracey 0427500649

WINCHELSEA LIONS CLUB IGA BBQs

9 -12pm first Sat of month outside IGA.
Proceeds to IGA Community Chest.

WINCHELSEA LAND AND RIVERCARE

First Saturday of the month 9am
Meet at Guye Reserve, Barwon Terrace
Rod Atone 0428 549318
Stewart Mathison 0428 672054

WINCHELSEA STAR PRODUCTION/COFFEE MEETING

9-11am (Last Sat monthly)
Sweet Thyme Cafe, Main Street
www.winchelseastar.org.au

WINCHELSEA CROCHET GROUP

1.30pm Every 2nd Saturday \$5
Winch Community House, 28 Hesse St,
Vee 0467 219 227

ST JOHN THE BAPTIST CATHOLIC CHURCH

Mass 5pm each week
Harding St, Winchelsea 0404598558

WINCHELSEA COMMUNITY DINNER

6.30pm last Sat monthly, except Nov/Dec
Hall, Harding St Winchelsea
Bring plate and gold coin donation if you can

SUNDAY

WINCHELSEA COMMUNITY MARKET

9-1pm, 1st Sunday monthly
Shire Hall car park, Main St Winch
[growingwinchelsea.com/project/
winchelsea-community-market/](http://growingwinchelsea.com/project/winchelsea-community-market/)

WINCHELSEA UNITING CHURCH

Service 9.30am each week
Hesse St, Winchelsea 0475 777 301
uca.winchelsea@gmail.com

ST THOMAS' ANGLICAN CHURCH

10am each week
Barwon Tce, Winchelsea
0477 672 042
stthomaswac@gmail.com

TRENCHES & HOLES PTY LTD.

GENERAL EARTHWORKS
DRIVEWAYS
TRENCHER
KANGA

EXCAVATOR (3.5T & 6T)
TIPPER TRUCK
ROCK BREAKER
POST HOLES & FOOTINGS

PHILLIP ROBERTSON

PH. 0427 672 945

A.B.N. 74006896898

MRP Steelworx

Matthew Partridge
p 0418 672 334

e mrpsteelworx@yahoo.com.au

Welding Service

- Onsite welding
- Farm maintenance
- Farm machinery & equipment repairs
- Cattle & sheep yards
- Custom built trailers
- Supply & install gates

SOUTH-WEST — PAINTING — GROUP

Contact us:



0431 719 218



www.southwestpaintinggroup.com.au



matt@southwestpainting.com.au

We specialise in:

- New Homes
- Texture Feature Finishes
- New and Old Cabinetry Coatings
- Commercial Projects
- Maintenance Work
- Residential Work
- Wallpapering
- Pre-Sale Painting
- Timber Decking Rejuvenations

M & L DRAYTON PLUMBING SERVICES

REG No 24356 C/A No C02594

- Domestic and Rural Plumbing
- Roofing
- Sewerage & Septic
- LPG & Natural Gas Connections
- Motorised Drain Cleaning
- Backhoe Hire

Phone Mark 5288 7244

PO BOX 98 WINCHELSEA 3241

Mobile 0428 520 142



DRIVEWAYS, CARPORTS, CROSSOVERS,
FOOTPATHS, SHED SLABS, STAIRS
HOUSE SLABS, EXPOSED, SEALING & MORE

CONTACT ALISTER NOW FOR A QUOTE

0411871950

AMACONCRETING1@GMAIL.COM

A Season to Sparkle: Christmas in Winchelsea 2025 brings community together

Elaine Atkinson

There's something special about Christmas in Winchelsea — and in 2025, that spirit truly shone.

From glowing homes to family events, this year's Christmas program brought the community together in a way that was both heartwarming and friendly. A newly released final report captures the success of the 2025 program, highlighting not only strong participation, but the genuine sense of pride, connection and joy felt across the town.

Across December, families, friends, visitors, businesses and volunteers came together to enjoy a series of events including Twinkle Trees on Main, the Hidden Elf Christmas Trail, the Lions Club Christmas Lights Competition, Carols by the Barwon, the Christmas Market and the Family BBQ celebrations.

The results speak for themselves — high attendance, thriving local businesses, and overwhelmingly positive feedback from the community. Many described the program as “bringing the town to life” and creating memorable experiences for families and visitors alike. As one person said in their feedback - “I think it created a happy community feel for Winchelsea. Thank you”

Event Coordinator Elaine Atkinson said the success of Christmas in Winchelsea into the future will be driven by the people behind it. Already several volunteers have put their hand up to assist.

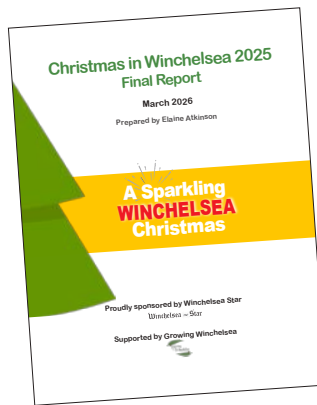


Table of Contents	
Christmas in Winchelsea 2025	1
Final Report	1
Executive Summary	2
One-Page Summary	3
Executive Summary	3
Program Overview & Objectives	4
Event Elements	5
Twinkle Trees on Main	5
Hidden Elf Christmas Trail	5
Lions Club Christmas Lights Competition	7
Carols by the Barwon	9
Christmas Market	10
Family BBQ & Photo Announcements	11
Community Feedback & Evaluation	12
Financial Overview	13
Governance, Risk & Sustainability	14
Recognition & Acknowledgements	15
Major Sponsor	16
Funding & Principal Sponsors	16
Event & Establishment Sponsors	16
Price & In-Kind Sponsors	16
Community Partners & Volunteers	16
Closing Statement	16
Appendices	17
Appendix A - Online Community Survey Summary	18
Appendix B - Community Survey Comments	24
Appendix C - Sponsor Feedback	25

“This is truly a community effort. From the volunteers and organisers to our sponsors, businesses and families — everyone played a part in making Christmas in Winchelsea something special,” she said.

“The strong community spirit made it all worthwhile. If you wish to be a part of Christmas in Winchelsea 2026 I would love to hear from you as I will be calling a meeting soon to start the planning.” The report also reflects on what worked well, lessons learnt and identifies opportunities to grow and strengthen the program into the future thanks to the great community feedback, ensuring it remains a highlight of the Winchelsea calendar for years to come. Anyone interested in learning more about the outcomes, community feedback and future direction of the program is warmly invited to request a copy of the full report.

To request a copy of the report, please contact:
Elaine Atkinson
0458 009 616

Have you tried Sukodo? sudoku.com

To play easy Sudoku, fill the 9x9 grid so every row, column, and 3x3 box contains the numbers 1–9 without repetition. Focus on rows, columns, or boxes that are nearly full, using elimination and logic to fill in missing numbers, usually by scanning for rows/columns that already contain the missing digits.

Puzzle

				8		9	6	2
		8	5	1				
	6			9		1		
	8	4	1	6	9	7		3
3			7			2	1	
		7		2		4		
		1	2	7	5	6	4	
	7	2	9					1
5	4		6			8		

Solution

4	1	5	3	8	7	9	6	2
9	2	8	5	1	6	3	7	4
7	6	3	4	9	2	1	8	5
2	8	4	1	6	9	7	5	3
3	9	6	7	5	4	2	1	8
1	5	7	8	2	3	4	9	6
8	3	1	2	7	5	6	4	9
6	7	2	9	4	8	5	3	1
5	4	9	6	3	1	8	2	7

Is your nature strip fire hydrant accessible?

Surf Coast Shire

Please help our firefighters by making sure the fire hydrant on your nature strip is free from grass and weeds. *Editor*

Surf Coast Shire Council and fire agencies are encouraging residents to help ensure local firefighting hydrants are accessible and ready for action in the event of a fire.

Recent examples of nature strip hydrants grown over with grass or plants, buried under dirt or inaccessible under parked cars or trailers have prompted this important community safety message.

“If there’s a fire in your neighbourhood, you’re going to want firefighting units to be able to connect with water quickly,” Councillor Paul Barker said.

“That means being able to find hydrants easily and tap into them without having to waste precious time searching, digging around or knocking on doors asking for vehicles to be shifted.

“Council maintains hydrants across the shire but residents have a vital role in helping. We have been disappointed to hear of some aggressive behaviour by residents towards our hydrant contractor.

“We acknowledge that some residents might have a particular sense of ownership for their nature strips and care for their appearance, but we ask everyone to please respect the important maintenance being carried out by keeping hydrants clear and accessible.”

CFA Torquay Fire Brigade Captain Murray Middleton echoed the maintenance call. “Access to the hydrant plugs is critical to our response times and how effective we can be in an emergency,” Captain Middleton said.

“Every second lost searching for a hydrant or accessing a hydrant could be the difference between saving a house or a life.

“We’d really love our communities to recognise when they have a hydrant in front of their house and to help us maintain them. Keep them clear of dirt and grass and plants, keep the marker posts in the ground and most importantly don’t park your car over them.”

A residential fire hydrant is generally located within a nature strip and is identified by white marker post.

Blue reflectors and white painted diamonds on sealed roads also help fire services identify them at night.

People can find more information on helping maintain fire hydrants via surfcoast.vic.gov.au/FireReady

Bushfire recovery support under Disaster Recovery Funding

Victorian Government

Announcing the Bushfire Recovery Support program. *Editor*

The 2026 bushfires burned more than 400,000 hectares of land, causing widespread destruction.

A \$2.6 million grant for urgent conservation and recovery for threatened species impacted by the fires has been announced.

The support is jointly funded by the Federal Government and State Governments under the Disaster Recovery Funding Arrangements.

- The Otways will receive \$200,000 for Grasstrees to protect the habitat for threatened native mammals including the Southern Brown Bandicoot, Long nosed Potoroo, Swamp Antechinus and White footed Dunnart.
- In the state’s northeast, \$600,000 is being invested in emergency programs to help vulnerable aquatic species such as native fish, crayfish and frogs.
- Immediate recovery work with \$221,000 for the nationally endangered Booroolong frog focuses on habitat restoration and threat management.
- \$100,000 is being spent in the Mallee for restoration and conservation work for the vulnerable Pink Cockatoo.
- \$200,000 will support our Dingo population in Wyperfeld National Park with water supply points to prevent local wildlife going onto nearby farms.
- In Gippsland, actions are underway to strengthen the long-term survival of the Eastern Bristlebird through targeted habitat and predator management with \$109,000.

Projects will be delivered with partners Parks Victoria, Royal Botanic Gardens Victoria, Victorian Fisheries Authority, Trust for Nature Victoria and Traditional Owner groups.



Fire Danger Period FINISHED NOW

The Fire Danger Period is when CFA restricts the use of fire in the community to help prevent fires from starting.

The Fire Danger Period is NOT the same thing as a Total Fire Ban.

Municipality	Start	End
SURF COAST	24/11/2025	13/04/2026

Find the rules at: <https://www.cfa.vic.gov.au/warnings-restrictions/fire-permits/about-fire-permits>



The Climate Report

Compiled by Judy Cameron

Why the phrase ‘Super El Niño’ makes Australian climate scientists roll their eyes

By Kimberley Reid Postdoctoral Research Fellow in Atmospheric Sciences,
The University of Melbourne writing for *The Conversation*.

Frightening headlines predicting a Super El Niño or even a Godzilla El Niño amp up anxiety levels for farmers and residents of bushfire-prone regions.

But these phrases are not particularly accurate. The phrase “Super El Niño” makes climate scientists like me roll our eyes. Why? Let’s find out.

What is El Niño?

The El Niño–Southern Oscillation is a natural and reoccurring climate pattern in the Pacific Ocean which can influence the chance of different weather affecting Australia.

When sea surface temperatures near the Americas are warmer than usual and the trade winds blowing from east to west across the equator weaken, climatologists call this pattern an El Niño. El Niño events typically ramp up in winter and spring, and decay towards the end of summer and start of autumn.

During El Niño, we tend to experience warmer than usual temperatures and reduced winter-spring rainfall in Australia’s east. We pay attention to El Niño and its opposite, La Niña, because this climate pattern has the biggest influence on year-to-year rainfall and temperature differences in eastern Australia. Drought is a key concern for farmers and rural residents, and some of the largest droughts of the past 40 years took place during El Niño years.

But problems can arise if we expect El Niño to be the only factor dictating our weather.

Why call an El Niño ‘super’?

One El Niño can be stronger or weaker than others. Scientists monitor El Niño using the Niño3.4 index, a measure of how much warmer (or cooler) than usual the ocean is in a region in the East Pacific. This region is the best at representing changes in the Pacific which can indicate El Niño.

When ocean temperatures are 0.8°C warmer than usual in that region, and the trade winds have sufficiently weakened, the Bureau of Meteorology can declare an El Niño has arrived. (The United States uses 0.5°C as the figure).

A “Super El Niño” is when the region’s ocean temperatures rise 2°C, roughly two standard deviations above normal (about a 2.5% chance of happening). While scientists first coined the term, the evocative phrase has become a favourite of media commentators.

But Australian forecasters don’t use these terms, as it doesn’t matter that much for our weather if the index goes over 2°C. What matters much more is whether an El Niño is present or not.

Why? When we measure the strength of the El Niño, we are really only referring to ocean temperatures in the eastern Pacific. But this figure is not very well correlated with less rain in eastern Australia. It also only captures ocean changes and doesn’t reflect the El Niño atmospheric changes which influence the weather systems that actually bring rain to Australia.

That’s not all. The Niño3.4 Index is just one of many indications of how Australia’s upcoming weather is likely to look. One index

can’t tell the whole story. Relying on it is like looking at the BMI of a bodybuilder and declaring them obese.

Readers may wonder how scientists can define El Niño using an ocean temperature threshold when oceans are getting steadily warmer under climate change. Won’t we end up with constant El Niño?

This is a good question. It’s why the Bureau of Meteorology last year introduced a relative Niño index, to give scientists a way to account for warming due to climate change.

Should we believe winter and spring forecasts?

A Southern Hemisphere autumn in the Pacific Ocean is sort of like January in your average Australian office job. As you slowly ease into the work year, you set a bunch of optimistic goals which may or may not eventuate.

Over autumn, the Pacific Ocean is similarly noncommittal. It can indicate future outcomes that don’t always happen. Meteorologists have a term for this. It’s called the Autumn Predictability Barrier. What it means is that El Niño forecasts are the least reliable during autumn.

So while forecasts of the Pacific Ocean might be pointing towards an El Niño, history warns us to take forecasts made in autumn for later in the year with a big lump of salt.

At present, the European, US and Australian model forecasts of Niño3.4 indicate a strong El Niño might develop. But this isn’t conclusive.

The forecasts made in March 2017 are worth looking at. Here, models confidently predicted a moderate and long-lasting El Niño, similar to forecasts in March 2026. What happened instead was a short-lived, weak El Niño.

How should we think of El Niño forecasts?

As a scientist who has researched seasonal forecasts of Australian rainfall, my advice is to ignore autumn headlines warning of a potentially catastrophic “Super El Niño”.

These get more clicks than more accurate headlines pointing out long-term forecasts at this time of year are uncertain. It’s worth waiting until the end of autumn or early winter before taking El Niño forecasts too seriously.

The current gold standard for Australian seasonal forecasts are the Bureau of Meteorology’s long-range forecasts. But even here, these forecasts become quite uncertain more than a month in the future. It’s important to regularly check for updated forecasts.

Will we get an El Niño this year? The only scientifically accurate answer as of April 9 2026 is “maybe”. It’s way too early to say anything other than that an El Niño is more likely to form this year than a La Niña.

For the full story with illustrative graphs see <https://theconversation.com/why-the-phrase-super-el-nino-makes-australian-climate-scientists-roll-their-eyes-279758>

OZ TREES NURSERY & TREE PLANTING SERVICES

- Affordable seedlings—over 200 species
 - Complete plantation service—farm forestry, shelter, aesthetics
 - Deep ripping & mound ploughing. Rotary bed forming
 - Our experienced staff will help you select species for your site conditions and needs
- Also available—tree planting tools, milk cartons, plastic tree guards & bamboo stakes



569 Warrowie Rd. Colac
P: 5233 6280 F: 5233 6393
E: info@oztrees.com.au
W: www.oztrees.com.au
Open Monday—Friday
9am—4:30pm

Phone OzTrees for professional advice,

Water Delivery

WAZZA'S WATER CARTAGE

*Stainless Tanker Up to 22,000 ltr loads
Barwon Water Registered*

Domestic & Rural Water Supplies

Call Wazza
Mob: 0428 877 260
Email: wazza@wazzas.com.au Web: wazzaswater.com

52672192 **R & K Creative Framing**
for all your framing needs

free quotes
pension discount
specialist in Age &
Disability Modifications

Ray & Kim Jansen
10 Witcombe st
Winchelsea 3241

Ray The Home
Maintenance **HANDYMAN**
abn 47928623462

0414672192

Antique Repairs

By **Doug Burns** est. 1976

- All Furniture
- French polishing
- Carving
- Veneering
- Wood Turning
- Porcelain



Unusual Requests Welcome

180 Barwon Terrace, Winchelsea

0428 672 704

ADVERTISERS' DIRECTORY

ACCOUNTANT

STS Accounting 5267 2673

AGRICULTURAL

Southern Grain 5267 2351

ANTIQUES

Antique Repairs 0428 672 704

AUTOMOTIVES

SJR Automotive 0423 413 829
Winchelsea Auto 5267 3001

BANK

Bendigo Bank 5267 3189

BUILDERS

Alford Built 0408 583 362
Lupton Builders 0438 840 104
MGT Building 0409 433 687

CAFE

Café La Hoot 0407 528 999

CHIROPRACTOR

One Body 5267 2240

CHURCHES

Anglican 0448 687 588
Catholic 0477 672 042
0404 598 558
Uniting 0475 777 301

CLUBS

Girl Guides 0448 672 630
Golf 5267 2660
Lions 4224 0226
Movie 0409 672 054
Probus 0417 467 927
Scouts 0409 330 147

COMMUNITY

Community House 5267 2028
Foodbank 0417 848 292
Mainly Music 0407 838 256
Men's Shed 0407 839 139
Playgroup 0432 019 944
RSL 0488 165 109
Senior Citizens 0427 672 263
Toy Library 5267 2028

CONCRETERS

AMA Concreting 0411 871 950
Vince Concreter 0412 840 704
Winchelsea Concreting 0438 235 237

DANCE

Mel's Dance 0400 874 338

ELECTRICIAN

Green Lead Electrical 0467 097 101

EMERGENCY

Police 5267 2025
SES 132 500

EXCAVATORS

DownRyte Excavations 0409 447 288
Trenches & Holes 0427 672 945

FENCING

Direct Temporary 0417 310 800

FRAMER

R&K Creative Framing 5267 2192

FUNERAL

Tuckers Funeral 5221 4788

FURNITURE

Worpel Custom 0439 013 145

GYM

Sunny Gym 0401 417 387

HEALTH SERVICES

Hesse Rural Health 5257 1200
Winchelsea Medical 5292 8028

HIRE

Colac Hire 5232 1177
Tip Truck Hire 0412 840 704

LAWYER

Wightons Lawyers 5221 8777

MOWERS

All About Mowers 5267 2266

NURSERIES

Oz Trees Nursery 5233 6280

OSTEOPATHICS

Dr Kale Mazurek 0417 114 617
Winchelsea Osteo 5267 2948

PAINTER

South-West Painting 0431 719 218

PLUMBERS

M&L Drayton 0428 520 142
M&B Wood 0418 319 357
Simco Plumbing 0400 643 976

QUARRIES

RAK Davis & Sons 5267 2094

REAL ESTATE

Charles Stewart 5231 5400
HF Richardson 5229 8017

SCHOOL

Primary School 5267 2134

SHIRE

Surfcoast Shire 5261 0600

SPORTS

Park Run 0408 102 802
Pickleball 0438 672 197

STEELWORK

MRP Steelworx 0418 672 234

STORAGE

Storage King 5267 3116

SUPERMARKET

IGA 5267 2676

TAXIS

Surfcoast Taxi 0408 325 992
Winchelsea Taxi 0429 672 888

VET

Colac Vet 5232 1792
Moriac Vet 0447 781 089

WATER

Water Supply Specialists 5231 1861
Wazza's Water Cartage 0428 877 260

Winchelsea Churches



Winchelsea Uniting Church

0475 777 301

uca.winchelsea@gmail.com
Hesse St, Winchelsea 3241
Services 9.30am Sundays

St John the Baptist Catholic Church

0404 598 558

Father Joseph Panackal
Harding St, Winchelsea 3241
Mass 5pm Sat. APRIL 18, 25

St Thomas' Anglican Church

0448 687 588

Rev Christopher Duff
Barwon Tce, Winchelsea
Service 10am Sundays

Thought of the Week

"When you follow God's ways,
you avoid many choices that lead
to trouble, regrets or harm.

Wisdom helps you think before acting,
choose peace over conflict,
and walk away from it.
It can destroy you."

Have a Blessed week.

John Bader (Christian Pastoral Carer)

Psalm 8

O Lord, our Lord,
your greatness is seen in all the world!
Your praise reaches up to the heavens;
it is sung by children and babies.
You are safe and secure from all your enemies;
you stop anyone who opposes you.
When I look at the sky, which you have made,
at the moon and the stars, which you set in
their places
what are human beings, that you think of
them;
mere mortals, that you care for them?
Yet you made them inferior only to yourself;
you crowned them with glory and honor.
You appointed them rulers over everything you
made;
you placed them over all creation:
sheep and cattle, and the wild animals too;
the birds and the fish
and the creatures in the seas.
O Lord, our Lord,
your greatness is seen in all the world!

Good News Translation

Urgent food appeal as fuel crisis drives rising costs and falling food donations

Asylum Seeker Resource Centre

Please contribute to your local Foodbank if you can. Editor

The Asylum Seeker Resource Centre has launched an urgent food security appeal as rising costs, fewer food donations, and increasing demand from people who have never used our services before place growing pressure on its Foodbank services.

Each month, thousands of people seeking asylum rely on the ASRC's Foodbanks in Footscray and Dandenong. Many are living on temporary visas for years, with no access to income support, no work rights, and no safety net.

The organisation is already seeing signs of strain, including empty shelves as people are finding it hard to drop off donations due to the cost of fuel and more families without enough food at home.

The pressure is being driven by global instability and fuel supply disruptions, pushing up the cost of food, transport and essential

goods. Staple items such as rice, flour, oil and meat have already risen sharply, with increases on bulk purchases of up to 25%.

Other food relief organisations across Victoria are reporting the same pressures, with demand rising and supply becoming harder to sustain.

At the same time, food donations are declining as households face rising living costs, while suppliers are passing on higher transport costs or requiring collection instead of delivery.

This is placing sustained pressure on the ASRC's operations, increasing the cost of sourcing and delivering food which reduces supply at the very moment that demand is growing.

In response, the ASRC is increasing bulk orders of essential items, expanding storage capacity for non-perishable and frozen goods, and adjusting logistics to maintain consistent access to food in the months ahead.

As an independent charity, the ASRC does not receive federal government funding for its core services and relies on community support to keep its Foodbanks operating.



WORPEL CUSTOM FURNITURE

- BESPOKE TIMBER FURNITURE
- TIMBER VANITIES
- BARNDOORS
- KITCHEN, BATHROOM & WARDROBE JOINERY
- REPAIRS & RESTORATION

0439013145

worpelsam@yahoo.com.au

25A Alsop Drive Winchelsea



Knuckey's Winchelsea

Ph: 5267 2011

Knuckey's have in stock a complete range of batteries to suit tractor, heavy machinery, cars, utes

The largest range of the best oil for your vehicles—**CASTROL**—
'when only the best will do'

The largest range of V belts.
A, B, C, D M Sections
Bolts and nuts for all occasions
Steel cut to size

TIP TRUCK HIRE

- * **FRONTEND LOADER
4 IN 1 BUCKET**
- * **DRIVEWAYS
LEVELLED OFF**
- * **RUBBISH REMOVAL**
- * **GRASS SLASHING
& RIDE ON
MOWER JOBS**

VINCE

0412 840 704



SOUTHERN GRAIN STORAGE PTY. LTD.

AG SUPPLIES FERTILISER GRAIN STORAGE SEED CLEANING

(03) 5267 2351



Winchelsea Supermarket

Trading Hours

Monday to Saturday

8.30am to 7.30pm

Sunday

10am to 7pm

Ph: 5267 2676

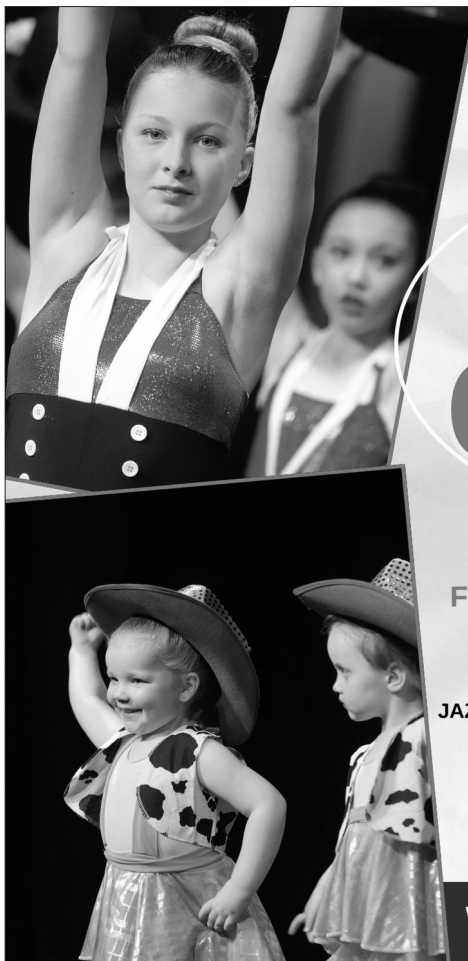
29 Main St, Winchelsea

CONCRETER

- * **DRIVEWAYS**
- * **FOOTPATHS**
- * **KERB & CHANNEL**
- * **GARAGES & SHED SLABS**
- * **STEPS**
- * **WHEELCHAIR RAMPS**
- * **VERANDAHS**
- * **PATIO AREAS**
- * **PLAIN OR COLOURED
CONCRETE**
- * **CONCRETE CUTTING
& REMOVAL**

VINCE

0412 840 704



DANCE CLASSES

TAKING ENROLMENTS NOW
FOR OUR WINCHELSEA STUDIO

PRE-SCHOOLERS - ADULTS
CONTROLLED CLASS SIZES
JAZZ - THEATRICAL TAP - CLASSICAL BALLET
HIP-HOP - CONTEMPORARY DANCE

ENROL TODAY

WWW.MELSDANCECENTRAL.COM.AU

Helping little lives thrive: local Paediatric Occupational Therapy Clinic

Hesse Rural Health

This time last year, Hesse Rural Health proudly celebrated the launch of a new Paediatric Occupational Therapy (OT) Clinic at Winchelsea Community Health - a major step forward in improving access to specialised healthcare for children and families in our region.

For many rural families, accessing paediatric occupational therapy can be challenging. Services are often located far from home, and long wait times or travel costs can delay important support. Occupational therapy plays an essential role in helping children navigate developmental delays, sensory processing differences, physical challenges, and learning difficulties.

With the opening of this clinic, families in our catchment can now access this support closer to home.

The need for the service became clear through conversations with local schools and healthcare providers. It highlighted a clear need – many children were missing out on early support due to limited local availability. Families also shared concerns about the impact of delays, particularly on children's learning, confidence, and social development.



Our service adopts a play-based, strengths-focused therapy model, with strong emphasis on active parent involvement. This helps ensure strategies and skills can be carried into everyday life at home, school, and in the community. Therapy is delivered flexibly, either at the Winchelsea Community Health facility or within a child's home environment.

The clinic is supported by a Paediatric Occupational Therapist with over 12 years of specialised experience. In just the first six months, the service had already supported eight children; many of whom had not previously been able to access this support. Early feedback from families has been overwhelmingly positive, with improvements in daily living skills, emotional regulation, fine motor development, and increased parental confidence. One parent shared: "This clinic has changed our lives. Before, we didn't know what support our son needed. Now, he's confident, engaged, and happy."

The success of the Paediatric OT clinic marks an exciting step forward for rural healthcare in our region.

For more information or to learn more about eligibility for accessing paediatric occupational therapy services, please contact Hesse Community Health by phoning 5267 1200 or emailing communityintake@hesse.vic.gov.au

The Flu Season is upon us!

Judy Cameron

Information obtained from <https://www.betterhealth.vic.gov.au/health/healthyliving/flu-influenza-immunisation#where-to-get-the-flu-vaccine>

Once again Flu season is upon us. Don't get caught. Make sure you get your vaccine now. Editor

Influenza (flu) is caused by a highly contagious virus that is spread by contact with fluids from coughs and sneezes. Every year, the flu causes widespread illness in the community.

During 2026, continued seasonal flu activity and COVID-19 are anticipated.

Vaccination is key to protecting yourself and those around you from the flu.

Who should be immunised against the flu?

Immunisation against the flu is recommended for everyone aged 6 months and over.

Some people with underlying medical conditions or reduced immunity are more at risk of complications from the flu and are eligible for the free flu vaccine under the National Immunisation Program (NIP). They include:

- Aboriginal and Torres Strait Islander people aged 6 months and over
- Children aged 6 months to under 5 years
- Pregnant women at any stage of pregnancy
- People aged 65 years or over
- People aged 6 months or over who have medical conditions that mean they have a higher risk of getting serious disease:
 - cardiac disease
 - chronic respiratory conditions
 - immunocompromising conditions
 - *haematological disorders*
 - *chronic metabolic disorder*
 - *chronic kidney disease*
 - *chronic neurological condition*
 - *long term aspirin therapy in children aged 5 to 10 years.*

Where to get the flu vaccine

In Victoria the most common way people access the flu vaccine is from their doctor (GP) or a pharmacist immuniser (a service fee may apply).

When to get the flu vaccine

Yearly vaccination before the onset of each flu season is recommended. In most parts of Australia, flu season occurs from June to September, with the flu vaccine typically available from April.

Recent evidence suggests optimal protection against the flu occurs within the first 3-4 months following vaccination. It is important to note that, while the influenza virus continues to circulate, it is never too late to vaccinate.

Can you have flu vaccine and other vaccines on the same day?

Yes. The flu vaccine can be co-administered (that is, given on the same day, one after the other) with other vaccines. This includes whooping cough, respiratory syncytial virus (RSV), pneumococcal, shingles (Shingrix®) and COVID-19 vaccines.

For information about COVID-19 vaccines please visit <https://www.betterhealth.vic.gov.au/covid-19/covid-19-immunisation>

GROUNDING FESTIVAL - Get your tickets now

Why go to a festival... NOW, in a global CRISIS????! Because GROUNDING Festival offers solutions and a path to greater self-sufficiency, resilience and health.

Well, it's certainly an interesting time to be putting on a festival that's all about improving resilience, self-sufficiency, capacity and abundance! You could say we're completely bonkers and we can definitely hear you saying, "Can't you see we're dealing with a CRISIS here?!"

It sure feels like it. Fertiliser costs are already as high as \$1,600 per tonne, the highest since the last crazy spike in 2021. Diesel has hit \$3.20 in some areas and transport costs are up 50%. A quarter of vegetable growers report that they've reduced or stopped planting completely in the face of the unknown. Food prices are bound to rise. And these are just the knowns.

Here at GROUNDING we try to avoid the 'C' word. Because the history of the world and the laws of nature show that there's a flip side to everything and if this is a CRISIS, then it's also a brilliant OPPORTUNITY.

An opportunity to start making the changes that will ensure more abundant farms, more resilient landscapes and healthier communities. An opportunity to learn from what's happening now and strengthen ourselves against future shocks.

There's no doubt that we have the skills, experience and technology to break our dependence on expensive inputs and farm smarter, in partnership with nature, for a healthier future. We can start now. That's the opportunity that GROUNDING Festival is all about.

The 2026 GROUNDING Festival programme is an incredible opportunity to spend two days hearing from 70 plus international, national and local experts who are busily building a better food and farming system.

We'll cover everything from paddock to purse to plate. Soil health and carbon, agroforestry and dealing with fire, landscape hydration, grazing systems, landscape-human health connections, nutritional density in food, farmer mental health, finance and natural capital and so much more.

And it's not just listening, it's the practical doing too, with 20 workshops and a line up of experts to answer your questions.

GROUNDING FESTIVAL 2026 | 22-23 APRIL 2026 | YAN YAN GURT WEST FARM, VIC

groundingaustralia.com.au

LOCAL FARM TOURS

- Farm My School Colac, a not-for-profit organisation that collaborates with schools to promote healthy eating, ecological stewardship and connected communities.
- Free self guided tour of the Frogwood Arboretum in Deans Marsh
- Yan Yan Gurt West Farm, including Yan Yan Gurt Creek catchment drive
- Bambra Agroforestry Farm Tour
- Brae Farm Garden Tour

Savings through recycling

Container Deposit Scheme

Recycling is good way to support charities. *Editor*

More than 3 billion cans and bottles have been recycled through Container Deposit Scheme (CDS). As a result, more than \$300 million dollars has been refunded.

The surge in recycling is also supporting local charities, community organisations and sporting clubs who turn to CDS Vic as a dependable fundraising source.

Scouts Victoria has raised \$121,000 through fundraising to help young Victorians attend camps and experiences across the state.

The Good Friday Appeal has raised more than \$102,000 through CDS Vic thanks to the generosity of Victorians.

Another example, a Bowls Club has raised \$2,350 by collecting and returning more than 17,000 containers to date, helping fund facility upgrades and new equipment.

Before CDS Vic launched, drink containers were one of the most littered items in Victoria. Now, 3 billion have been diverted from landfill and remade into new similar products. This scheme helps keep our streets and parks clean and has created around 600 jobs in the recycling industry.

It has never been easier to help keep waste out of landfill and litter out of the environment, with 600 convenient deposit points across the state.

Top 10 Metro Refund Points

- Williamstown operated by Citizen Blue (74 million)
- Melton operated by KARI (71 million)
- Hallam operated by Return-it (53 million)
- Carrum Downs operated by Nu Container Recycling (39 million)
- Pakenham operated by Return-it (38 million)
- Clyde North operated by Hoxton Industries (37 million)
- Frankston operated by Return-it (32 million)
- Keysborough operated by Return-it (29 million)
- Braeside operated by Nu Container Recycling (28 million)
- Epping operated by Envirobank (28 million)

Top 10 Regional Refund Points

- Mildura operated by Exchange Depot (53 million)
- Shepparton operated by FOOTT (52 million)
- East Bendigo operated by Envirobank (34 million)
- CDS Vic Depot Kangaroo Flat operated by Envirobank (31 million)
- Lucknow operated by Tambo Recycling Centre (29 million)
- Sale operated by Tambo Recycling Centre (29 million)
- Traralgon East operated by Return-it (29 million)
- Wodonga operated by Exchange Depot (29 million)
- Drouin operated by Return-it (28 million)



Seatbelts save lives.

Driving unbuckled? If you or your passengers drive without a fastened seatbelt, you could each receive a \$407 fine. The driver will also face 3 demerit points. If you take risks while driving, chances are you will be caught.

Anywhere. Anytime. Anyone.



Winchelsea
**Medical
Clinic**

Located at 36 Main Street, Winchelsea 3241

For any enquires or bookings please contact the clinic on 5292 8028.
Or visit our website: www.winchmc.com.au

Opening Hours:

Monday - Friday 8:00am - 5.00pm

(Monday Evening Clinics available and selected Saturdays)



Our clinic accepts online bookings via the app called HotDoc.
Download the app on the App Store or Google Play or head to our website.



17 Alsop Drive

- ❑ LOG BOOK SERVICE
- ❑ AUTO ELECTRICAL
- ❑ TOWING
- ❑ AIR CONDITIONING
- ❑ CLUTCH & BRAKES
- ❑ TYRES
- ❑ WHEEL ALIGNMENT
- ❑ BATTERIES

**CAR, TRUCK REPAIRS
& Roadworthys**

PH: 5267 3001

Mob: 0417 137 457

**R.A.K. DAVIS
& SONS**

**CARTAGE
CONTRACTORS**

WINCHELSEA

SUPPLIER OF ALL QUARRY MATERIALS, TRUCK HIRE

CARTAGE OF GRAIN, LIME, GYPSUM & SUPER

LANDSCAPE & GARDEN SUPPLIES

56 WILLIS ST, WINCHELSEA

Ph – 5267 2094

Ryan – 0438 672 281

email: rakdavissons@gmail.com



SIMPLE STORAGE SOLUTIONS

- Personal & Business Storage
- Boat, Caravan & Vehicle Storage
- High Security Premises
- Individually Alarmed Units
- Electric Gate Access
- 7 Day Access & CCTV

YOUR STORAGE PROBLEMS SOLVED

5267 3116

6 ALSOP DRIVE, WINCHELSEA 3241

Wightons Lawyers

Dispute Resolution & Litigation

Debt Collection

Property Law

Wills & Estates

Powers of Attorney

Business Law

Family Law

By appointment only

22 Willis Street, Winchelsea
ph. 5221 8777

www.wightons.com.au



**Generations of Care
and Compassion.**

Tuckers
Funeral & Bereavement Service

... for a life worth celebrating



AFDA Member

PH: 5221 4788

www.tuckers.com.au



45 Anderson Street, Winchelsea 3241 Tel 5267 2660 winchelseagolf.com.au

Winchelsea Golf Club



Rachel Boddington

Wednesday Ladies Results 8/4/26

Ladies Results

Stableford NTP 2/11

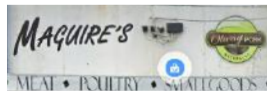
Winner: Di Bartel 30 pt

R/up: Sue Cuthbert 29, CB Lesley Mathison

NTP: Sue Cuthbert

Saturday Results 11/4/26

Maguires Butchers - Stableford 15 Players



1st - Alan Redmayne (13) 34 points

2nd - Greg Batson (23) 29 points C/B

BDL - Bill Spencer (17) 29 points C/B

BDL - Neil Hickman (10) 29 points C/B

NTP (2nd/11th) - Greg Batson

Golden Hole (6th) - Alan Redmayne



Photo credit: Jordan Allen - The Golf Lab

Coming up:

Wednesday 15th April - Weekly Stableford

Next Saturday 18th April - Moriac Members Day/Guest Day

THE COURSE

The course is an 18-hole, 5317 metre par rated 67 course (mens) par 72 (ladies), the course is 9 hole layout played from multi tee positions. The fairways and grass greens have been extensively renovated since 2010, and a recycled water system along with dam provide the club water security to improve the course.

The signature hole on the course is perhaps one of the most unique holes in Victoria. Called the quarry hole, it is constructed

in the bottom of a disused bluestone quarry. This means you are unsighted to the green from the tee. You have to hit over a screen of olive tree in front of the quarry, but once over the only place is the bottom of the pit. The next assignment is to put your ball in the small hole. People have travelled long distances just to play Winchelsea because of the quarry hole. Some older locals used to call it the Aquarium – this name comes from the time of the racecourse when the quarry had a pond in the bottom of it and ducks resided there.



Peter McConachy
LIVESTOCK & REALESTATE
0408 522 878

Jamie McConachy
LIVESTOCK
0418 522 879

Dougal McIntyre
LIVESTOCK
0439 575 612

Matt Nelson
LIVESTOCK
0428 315 400

Tim Hill
LIVESTOCK & REALESTATE
0427 177 133

Andrew Rice
REALESTATE
0457 105 500

Michael Stewart
REALESTATE
0418 520 467

Josh Lamanna
REALESTATE
0417 586 032

Daryl Osborne
REALESTATE
0419 388 341

Anthony McDonald
REALESTATE
0418 593 597

PROPERTY MANAGEMENT

Clare Wilson
PROPERTY MANAGEMENT
05231 5011

Melissa French
PROPERTY MANAGEMENT
05231 5011

Nathan Gray
PROPERTY MANAGEMENT
05231 5011



Livestock and rural agents servicing Western Victoria

• charlesstewart.com.au • 15 Murrell Street, Winchelsea





Need tax advice...?

Business & SMSF Tax Planning Specialists

Winchelsea Torquay
5267 2673 5261 2262
surftax.com.au

SIMCO PLUMBING SERVICE

Domestic - Commercial - Rural

0400 643 976

- All general Plumbing and Gasfitting • Water tanks and Pumps
- Renovations and Extensions • Hot water and Heat pump
- Split system and Wood heaters • Roof and Gutter
- Septic and Treatment plants • Excavation, Bobcat and Tipper
- Driveways and Earthworks
- Blocked drains and CCTV Inspection

Simon McGillivray
Lic: 109610 Free Quotes, Fast & Friendly Service



Winchelsea
Community
Foodbank

Fridays, 12 - 2PM
30-32 Hesse Street Winchelsea

For more info, contact Tess
healthpromotion@hesse.vic.gov.au
0417 848 292



All welcome
No eligibility requirements



Life's busy. Let us help you.

Contact us today

- We can help you with:
- Buying your first or next family home
 - Saving for your first home
 - Residential Investment Lending
 - Refinancing from your current lender
 - Home loan reviews
 - Pre-approvals



Josie Kavenagh
0409 564 192



Julie Dunkley
0466 217 889

With extensive banking experience and financial expertise, we'll help bring your financial goals to life.



Community Bank
Winchelsea and District

BOXING STRENGTH TRAINING KIDS KUNG FU BOXING STRENGTH TRAINING KIDS KUNG FU

SUNNY GYM

GYM BUT JOYFUL

FITNESS AND MARTIAL ARTS IN WINCHELSEA

SUNNY GYM OFFERS SMALL GROUP CLASSES IN PERSONAL TRAINING, BOXING AND KUNG FU.

sunnygym.com.au
0401417387

BOXING STRENGTH TRAINING KIDS KUNG FU BOXING STRENGTH TRAINING KIDS KUNG FU



Winchelsea Football Netball Club Inc

Hopkins St, Winchelsea winchelseafnc@hotmail.com



Junior Netball

Shae Callahan

Well done all of our players for impressive efforts across all teams. Looking forward to an upcoming exciting season.

Editor

Under 10s

The girls took on a tough B grade team this week and really rose to the challenge. They matched the pace beautifully and, while we were a bit unlucky in front of goals, the effort across the court was outstanding.

The intercepts and quick ball movement were incredibly impressive, and the defensive work from the entire team was fantastic to watch. Despite the final score of 16–2, it definitely didn't feel like it reflected the game.

So proud of our Mini Blues — an impressive effort all around!

Under 13s

The Junior Netball Winter Season kicked off in true winter style, with cold, wet, and windy conditions setting the scene for an exciting first round.

Our Under 13s made a positive start to the season as they took on Werribee Centrals. Despite the challenging weather, the girls showed determination, teamwork, and resilience throughout the match. They confidently implemented the skills and strategies they have been developing at training, demonstrating some impressive passages of play and strong communication across the court.

It was a tough contest, and while the final score saw them go down 4–24, the result did not reflect the effort and commitment shown by every player. The team's perseverance and sportsmanship were commendable, and their performance is a strong indicator of a promising season ahead.

Well done to all the girls on a fantastic start—we are incredibly proud of your effort and enthusiasm!



Under 15s

The Under 15s faced a physically tough challenge in their opening winter season match against Werribee Centrals, going down 8–24. Despite the result, the scoreline did not reflect the

team's impressive ball movement and skill, particularly in the wet and windy conditions.

The girls demonstrated resilience and determination throughout the game, adapting well as they trialled different combinations in both attack and defence. Their versatility and teamwork were evident across the court, highlighting their willingness to support one another and rise to the challenge.

It was especially pleasing to see the players listen to and implement their coaches' instructions, showcasing their commitment to learning and continuous improvement. With such a strong attitude and work ethic, the team has laid a solid foundation for a successful season ahead.



Under 19s

Our combined Under 17/19s team delivered an outstanding performance in a fiercely contested and highly physical match against Werribee Centrals Under 19s. In a thrilling showdown, the girls secured a hard-fought 19–17 victory, demonstrating grit, determination, and exceptional teamwork.

Spectators were on their feet cheering every goal as the game went down to the wire. The team showcased incredible skill, precision, and seamless ball movement, working cohesively across the court to maintain composure under pressure. Their resilience and commitment were evident from the first whistle to the final siren.

It was a fantastic display of talent and sportsmanship, and a well-deserved win to kick off the season. Congratulations to all players on an impressive performance!

A massive shout out to Tommy, Hannah, and Jed for running the BBQ this week. Your efforts helped create a fantastic atmosphere at the courts and kept everyone fuelled for the day ahead.

The delicious egg and bacon sandwiches and sizzling sausages were a huge hit, and they were thoroughly appreciated by players, families, and supporters alike. Volunteers like you play a vital role in making our club such a welcoming and supportive community.



NATURAL GAS CONNECTIONS

**M. & L DRAYTON
PLUMBING SERVICES**

YOUR LOCAL LICENSED

- PLUMBERS (24356)
- GAS FITTERS
- GAS CONVERTERS
- CARBON MONOXIDE TESTING

MARK 0428 520 142



5234 6585 0417 385 984
For all your septic tank, grease traps
and interceptor pits servicing.
Locally owned and operated



**Landcare
Victoria**



Moriac Veterinary Clinic

0447 781 089

PHONE 24 HOURS

784 Hendy Main Road Moriac

info@moriacvet.com

www.moriacvetclinic.com.au

HOURS // Monday - Friday: 8am - 5pm



**REGISTERED
Building Practitioner**

- NEW HOMES
- ALTERATIONS
- GARPORTS
- BATHROOMS
- EXTENSIONS
- DECKS
- VERANDAHS
- WINDOW REPLACEMENTS
- RENOVATIONS
- PERGOLAS
- RE-GLADS

**Leigh Lupton
0438 840 104**

LEIGHLUPTON17@GMAIL.COM

Est. 1977

Green Lead Electrical

Connecting you to a greener future
REC 23619

0467 097 101



**Servicing Geelong &
the Surf Coast**

**Specialising in all residential
electrical work including:**

- Switch board & lighting upgrades
- Outdoor lighting
- Electrical safety checks
- Energy efficient LED lighting
- Ceiling sweep fans & ventilation
- Energy saving advice

Phone Martin Wilkinson:

0467 097 101

greenlead@outlook.com

113226B-CG18-14



*New Homes, Renovations, Extensions,
Bathrooms, Decks & Pergolas*

0408 583 362

stephen@alfordbuilt.com.au



**REGISTERED
Building Practitioner**

**HESSE
RURAL
HEALTH**



Acute Care*
Urgent Care*
Residential Aged Care*
Community Nursing
Dietetics
Physiotherapy
Occupational Therapy

Diabetes Education
Social Support Groups
Counselling
Home Care
Health Promotion

* services from Winchelsea only

www.hesseruralhealth.com.au

P: (03) 5267 1200 E: reception@hesse.vic.gov.au



Winchelsea Football Netball Club Inc

Hopkins St, Winchelsea winchelseafnc@hotmail.com



Netball

Angie Mawson

Go the Blues! Look at these girls train. They are match fit and ready to go. Good luck to them in their new season. Editor

The netball season is just around the corner, and excitement is building as the girls prepare for Round 1 this Saturday against Werribee at Eastern Reserve. From all reports, the squad is looking incredibly fit, sharp, and ready to hit the court with confidence.



The effort the girls have put in throughout pre-season has been outstanding. Their commitment at training, focus on fitness, and determination to improve have not gone unnoticed, and it's clear they are eager to translate that hard work into strong performances on game day.

There's a real buzz around the club as we head into the new season, and we can't wait to see what unfolds—not just in netball, but across the entire football and netball programs. It's shaping up to be an exciting year for everyone involved.

A reminder to all supporters—if you haven't already, now is the perfect time to grab a social membership and get behind the club. Thursday night dinners have also officially restarted, and the kitchen staff are doing an amazing job, serving up great meals and creating a fantastic atmosphere for everyone to enjoy.

Bring on Round 1!

Are you ready? Let's NET SET GO!

Join Woolworths NetSetGo, Australia's leading netball program for kids aged 5 to 10. It's where netball begins but the fun never ends!

Why join?

- ★ Learn new skills in a fun, supportive environment
- ★ Make friends and build confidence
- ★ Smaller groups means more learning and more laughing
- ★ Aged-based stages, which are welcoming of all experience levels - everyone can join!

Starts Thursday
24th April 4pm!

Find out more Shae 0409641556

GOOD CLEAN FUN

PLAY.AFL/AUSKICK

WINCHELSEA

Eastern Reserve

Thursdays, 5:00-5:45pm
Season Commence 30th April



Scott McDonald
0423 413 829



S.J.R AUTOMOTIVE
ABN 942 483 546 39
13 ALSOP DRIVE, WINCHELSEA VIC 3241

- Domestic and Commercial hire equipment • Industrial welding gas
- Digging and Earthmoving equipment • New trailers and trailer repairs
- Firewood • Stockists of Royal Oil Lubricants products
- LPG for domestic and commercial requirements

Give Chris and the Team a call on **5232 1177** or email info@colachire.com.au
www.colachire.com.au
 101 Wallace St Colac 3250




Water Supply Specialists
WATER SOLUTIONS

74 Dennis Street, Colac
5231 1861

ALL THINGS WATER:

- PUMPS • PIPES
- FITTINGS • TANKS
- POOL CHEMICALS
- IRRIGATION
- WATER PURIFICATION
- SOLAR • REPAIR

Facebook and Instagram icons, and a QR code.




Winchelsea Branch

By Appointment:
Monday 2-5pm Thursday 11-3pm

40 Main Street Winchelsea
5232 1792 www.colacvet.com.au

MGT BUILDING & CONSTRUCTION

NEW HOMES | EXTENSIONS | RENOVATIONS Ph: 0409 433 687



A family business operating for more than 138 years, HF Richardson services an extensive client base throughout the greater Winchelsea area. Our success is built on a long history of innovation and while we've moved with the times, our basic values of honesty, trust and integrity have remained.



Eric Foster
0429 499 924
Sales Executive



Ken McDonald
0418 524 150
Licensed Estate Agent
www.hfrichardson.com.au

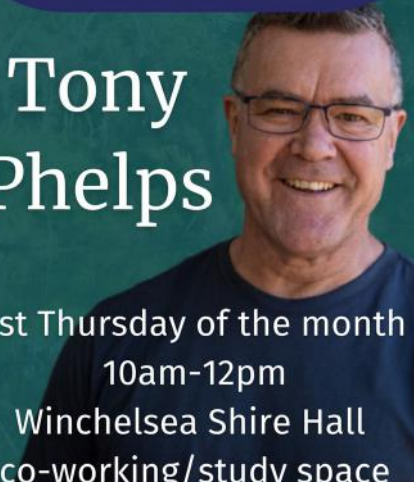
Residential | Rural Lifestyle
Agricultural Farms

HF RICHARDSON
PROPERTY

Chat with your Councillor

Tony Phelps

1st Thursday of the month
10am-12pm
Winchelsea Shire Hall
co-working/study space




parkrun 110



Saturday 11 April 2026

Trebeck Reserve, Winchelsea
parkrun.com.au/trebeckreserve

If you wish to join us any Saturday morning as a walker, runner or volunteer please complete the simple online registration at parkrun.com.au/register. This is free, only needs to be done once and can be used at any of the 5,000 parkrun events worldwide.



46 participants completed the course through Trebeck reserve this week in cold and windy conditions. We had visitors from Cobram, Melbourne and Caloundra.

6 people completed their personal best time for Trebeck Reserve. Congratulations to Andrew Twigg, Lucas Twigg, Robert Twigg, Justin Wallis, Lavinia Petrie and Christian Kattwinkel.

7 volunteers made this event possible. Thanks to Kate McInnes, Neil McInnes, Murray Bennett, Kristen Czerkiewicz, Angela Hurren, Liz Bennett and Alison Dean.

Full details of this week's results can be found at trebeckreserveparkrun.com.au/results or check out our Facebook page for more photos.

To volunteer please send an email to trebeckreserve@parkrun.com



DEFIBRILLATORS IN WINCHELSEA

Accessible to the public 24 hours a day

Winchelsea Lions Club has compiled a list of public access defibrillators in Winchelsea.

If you know others, please contact Linda Carter 0439 817 263.

- **Ambulance Victoria** 33 Willis Street
- **Bendigo Bank** 11 Main Street
- **Globe Theatre (Side entrance)** 17 Willis Street
- **Hesse Rural Health** 8 Gosney Street
- **Men's Shed** 51 Hesse Street
- **Netball Courts** Eastern Reserve Hopkins St
- **Senior Citizens Club** 36 Harding Street
- **Uniting Church** 33 Hesse Street
- **Winchelsea Bowls Club** Hesse Street
- **Winchelsea Golf Club** 13 Anderson Street
- **Winchelsea Primary School** Main Street
- **Wurdale Memorial Hall** 220 Wurdale Road





WINCHELSEA RE-LOVED MARKET

THIS SUNDAY!

19TH OF APRIL

9.30AM - 1.30PM

WINCHELSEA SHIRE HALL

OVER 20 STALLS FULL OF PRE-LOVED CLOTHING, HOMEWARES, CRAFT, COLLECTABLES AND MORE.

Gold Coin Entry

Sausage Sizzle

Coffee & Sweet treats

Smoothies and Acai bowls

Facepainting

WINCH HOUSE



Reaching into the community

