

informative | interesting | interactive

ADULT LEARNING OPPORTUNITIES

In person and online
courses available

SHED LOAD OF MEMORIES

The new Reminiscence Box from The Share Shed

FAMILY WILDLIFE DAY AT FILHAM



Buying a home?
Selling a home?
Fixed fee conveyancing?
No Move No Fee?

GARD & CO



Solicitors

01752 648174

gardandco.com



↑ Ivybridge & District Camera Club is looking forward to a new season of talks, competitions and outings *Clubs & Groups* p22



P28



P22



P5



P14

A SHED LOAD OF INFORMATIVE ARTICLES

Welcome to the latest issue of the **imag**, which is packed with a 'shed load' of interesting local features and articles.

Perhaps chief among them is the story about the new Reminiscence Box now available from the Share Shed – the library of things (see page 14). The box, donated by Conversation Works (see their advert on page 19), has been carefully curated to support older adults and people living with dementia.

There are still a few weeks until the kids go back to school, but for adult learners now is the perfect time to get started by looking at the courses available with Learn Devon this autumn (see page 10). As well as GCSEs and functional skills, the adult education provider offers development programmes in sectors such as education, mental health, and nutrition.

Also inside this month are details of a host of great forthcoming local events (see pages 5, 6 & 9) as well as the usual articles and features you have come to expect.

Steven – editor

FEATURES

- In person and online adult learning opportunities p10
- 'Plough Monday', 'Harvest Home' and other farming traditions p16
- Top tips for first time buyers p27

CONTACT THE IMAG

Do you have an article or story, or details of an event, you'd like to share in the **imag**?

It may be a charity fundraising quest, a report about your club or a personal achievement – whatever, we'd like to hear about it!

Please email us at info@theimag.co.uk. The deadline for the Sept issue is 27th August.

WHAT'S ON

- Hamilton at Theatre Royal Plymouth p5
- Ghost walk p5
- Summer barn dance p6
- Classic car show p9
- Party in The Park p9
- Dartmoor Outdoor Festival p9

ADVERTISE IN THE IMAG

Advertise alongside informative, interesting local content – not just page after page of other adverts.

We deliver 8,650 copies each month to homes in Ivybridge and 12 surrounding towns and villages including Yealmpton, Ugborough, Ermington, South Brent and Cornwood.

MORE

- Caring group appoints new trustee p12
- A Shed Load of Memories p14
- Neighbourhood police drop-in session p28
- Local win at Cornwood 10k p29
- Wildlife grants p28

DID YOU RECEIVE THE IMAG?

Do you think you should be receiving the **imag** but do not get it delivered at the moment?

Dogs and notices (of varying politeness) stating that free things aren't wanted aside, we aim to deliver to as many properties as possible in the area we cover. If you're not receiving a copy, please do let us know.

Helen Moore

Your Independent
Estate Agent

Specialising in the sale of
residential & new homes
in the South Hams &
Plymouth



Call 01752 962162

www.helenmoore.exp.uk.com

HELEN MOORE
PROPERTY



WESTERN
Carpets & Pine Ltd

www.westerncarpets.co.uk



Create the perfect space

Your Flooring and Furniture Specialists Since 1995

Visit our *new* showroom

Unit 6, Richmond Place, Central Avenue, Lee Mill Industrial Estate, Ivybridge PL21 9RL

Tel: 01752 896776 • Email: sales@westerncarpets.co.uk

Open 9am-5pm Monday to Friday, Saturdays by appointment only.

EXHIBITION**Devon Rural Archive**

A new exhibition, 'Seeds of Change: Farming in Devon in the 1920s' is now on display at the Devon Rural Archive (DRA) near Modbury.

The exhibition, which forms part of the wider 'Devon in the 1920s' festival taking place across the county, has displays featuring unique photographs and documents from the archive's collection on the themes of livestock, small-holdings, lives of women, Seale-Hayne agricultural college, and the lasting impact of the First World War.

The exhibition is based on research carried out by the archive's dedicated team of volunteers and by a local student who recently completed a work experience placement with them.

DRA is open Wednesday to Sunday, 10.30am-4pm. Entry is free.

HAMILTON**Until 5th September****Theatre Royal Plymouth**

The multi award-winning cultural phenomenon Hamilton is at Theatre Royal Plymouth as part of the show's first-ever UK tour.

Hamilton is the story of America's Founding Father Alexander Hamilton, an immigrant from the West Indies who became George Washington's right-hand man during the Revolutionary War and helped shape the very foundations of the America we know today.

The score blends hip-hop, jazz, blues, rap, R&B and Broadway – the story of

America then, as told by America now.

For performance times and to book tickets, go to theatreroyal.com/whats-on/hamilton2025.

FIREWORKS**13th -14th August****Plymouth Hoe**

Plymouth is set to host one of the greatest shows you will ever see as champion firework display companies go head-to-head in this year's British Firework Championships.

Six leading firework display companies will each put on a display to wow the crowds over two nights (three displays per night) and hope to be crowned Britain's best.

The displays are guaranteed to be stunning whether you are watching from the Hoe, from a boat or any of the many viewing points around Plymouth Sound.

Entertainment starts from 5pm, with the displays beginning around 9.30pm.

GHOST WALK**14th August. Meet at The****Sportsman's Inn. 7.30pm**

Hosted by David Phillips. £10 adults, £5 12-15 years (not suitable for under 12s). Places are limited and booking in advance essential – book by emailing davidtiptrips@gmail.com.

PLYM PIECEMAKERS' QUILT SHOW**15th & 16th August****Yealmpton Community Centre**

If you are interested in colourful, handmade textile art, you are in for a treat



One of the rooms to discover on a tour of Shilstone House - see p6

when local quilt group Plym Piecemakers holds its quilt show in Yealmpton.

This show is only held every three years, so it's a rare opportunity to see the group's collection of work.

The group is a mixture of local people from Ivybridge, Yealmpton and Plymouth

who specialise in making all sorts of textile pieces. Some of these quilts could be described as traditional, using hand sewing and familiar patterns. Some more modern, with vibrant colours and a less formal,

➔ Continues on page 6

IVYBRIDGE ARTISAN MARKET
BAKE-CREATE-GROW

1st Saturday of the month

BUY LOCAL SUPPORT ARTISANS

FIND US UPSTAIRS AT
THE WATERMARK
IVYBRIDGE, 9:30AM - 1PM

FIND US ON
facebook

**A MARKET SELLING A VARIETY OF
ART, CRAFT & FOOD HANDMADE BY
LOCAL ARTISANS.**

IVYBRIDGEARTISANMARKET.CO.UK
IVYBRIDGE.ARTISAN.MARKET@GMAIL.COM

looser style.

At the show, there will be the chance to talk to the makers about their work, as well as opportunities to buy items made by the group, including cushions, bags and other decorative handmade items.

There will be delicious home-made cakes, savoury scones and tea and coffee.

There will also be a raffle, with the chance to win a beautiful handmade quilt, a hamper of locally made food and drink and other small prizes. There will be a chance auction and a Name That Tune competition.

This year, the group's chosen charity is Huntington's Disease Association.

The show will be open between 10am and 3pm on both days.

SHILSTONE HOUSE TOUR

**Sunday, 17th August
2.30pm**

Owner Lucy Fenwick will take you around the house, including some of the private rooms, and will explain its history.

Shilstone has been virtually entirely rebuilt, by local craftsmen using stone extracted from an ancient quarry on the land. Local materials were used wherever possible, including Devon oak for the floors, and drawing room panelling, and lovely old Delabole slates for the roof. Lucy will explain this work as you pass from room to room and explore what is largely a completely new house.

£15. For more information and to book, go to shilstonedevon.com.

FAMILY WILDLIFE DAY

**Tuesday, 19th August
Filham Park. 11am-3pm**

Ivybridge Town Council has teamed up with the Share Shed - A Library of Things - to bring you a family wildlife day at Filham Park.

Join them for a free day of nature fun for all the family, including:

- Take a birds-eye view of Filham Park
- Record the beautiful "song of summer"
- Go on a journey into the underworld
- Challenge yourself on the camouflage nature trail
- Hunt for natural treasures
- Create your own palette of natural colours
- Explore and tour the fishing lake with Plymouth and District Coarse Angling Club

You will also be able to discover the Share Shed, which is helping communities access useful items affordably.

Children must be accompanied by an adult. Please bring your own refreshments.

COMMUNITY FESTIVAL FUNDAY

**Friday, 22nd August
Dame Hannahs, Woodlands Road, Ivybridge**

Dame Hannahs is holding a Community Festival Funday on Friday, 22nd August, 11am-4pm.

There will be live music and entertainment, stalls, games, crafts, bouncy castle, refreshments and much, much more.

Dame Hannahs look forward to welcoming members of the local Ivybridge community for a day of fun.

If you would like to be a part of the festival or would like more information, email louisa.traynor@discoverhannahs.org.

TWELFTH NIGHT

**27th-30 August
Outdoor performance at
Mothecombe Gardens,
2.30pm & 7.30pm**

In this outdoor production, audiences will enjoy an immersive experience as the performance moves from the sandy shores of Moth-

ecombe Beach through the picturesque gardens of Mothecombe House.

For more details and to book, go to flete.co.uk/ events.

SUMMER BARN DANCE

**Saturday, 30th August, 6pm
Lukesland**

All are welcome to the Harford Summer Barn dance.

There will be live music from local musicians, a BBQ, a raffle and an auction of promises.

Tickets are £17.50 for adults (£8 for under 16s) which includes the BBQ. There will be a bar for drinks (cash or card).

Tickets from deirdre.pope@some.oxon.org.

Proceeds will support St Petroc's Church.

EVENING LECTURE

**Thursday, 4th September
Devon Rural Archive
7-8.30pm**

Voices of the Past by Stephen Pedrick. Stephen Pedrick is a local historian specialising in oral history. Born in Kingsbridge, his family go back almost exclusively in the South Hams for many generations.

He has a deep interest in genealogy and local history, and in 2003 launched a project to collect hundreds of recorded stories from people living in the South Hams, and their memories have formed the basis of a series of books.

In this lecture, Stephen will talk about his own story, from local historian to author, and will recount some

➔ **For more What's On
turn to page 9**



**Plym Piecemakers is holding its Quilt Show in Yealmpton
– see page 5**



WILLS, PROBATE & LASTING POWERS OF ATTORNEY

AT HOWARD & OVER SOLICITORS

At Howard & Over, we understand that planning for the future isn't always easy, but it's one of the most important steps you can take to protect your loved ones and ensure your wishes are followed.

Why It Matters

Together, Wills, LPAs, and Probate ensure your affairs are managed exactly as you want:

- A Will ensures your estate is distributed according to your wishes, giving clarity and comfort to those you leave behind.
- An LPA lets you appoint someone you trust to make decisions on your behalf if you're ever unable to do so – for example, due to illness or an accident.
- Probate is the legal process that takes place after someone passes away, and it can be complex without the right guidance.

Having these legal protections in place provides peace of mind, not just for you, but for your family too.

There's no need to wait for a major life event. Whether you're buying a home, starting a family, or simply planning ahead, acting now avoids future stress and uncertainty.

Why Choose Howard & Over?

At Howard & Over, our expert team is known for providing clear, compassionate, and trusted legal advice. We take the time to understand your individual circumstances and tailor our approach to suit your needs. From drafting your Will to guiding you through probate or setting up LPAs, we're with you every step of the way.

For more information, contact our specialist solicitors at Howard & Over today. Let us help you take control of your future.

9 Glanvilles Mill • Ivybridge • PL21 9PS
e: ivybridge@howard-over.co.uk t: 01752 690123



HOWARD & OVER
SOLICITORS EST. 1914

www.howard-over.co.uk





gth

HAVE YOU SEEN THE SIGNS?

If you are keen to know the value of your own home, contact your local property experts today for a free market appraisal.

Scan here to
book a free
market
appraisal



01752 393737
residential.ivybridge@gth.net

GREENSLADE TAYLOR HUNT
www.gth.net

We know that a financial adviser is key
for those life changing moments, those
milestones when your priorities
change and you need to
rethink.



01752 837 950



www.manningandco.co.uk



MANNING & COMPANY
Independent Financial Advisers
Authorised and regulated by the Financial Conduct Authority

of his favourite stories from those he has collected. Book tickets at [shillstone devon.com/whats-on](http://shillstone.devon.com/whats-on).

JERUSALEM

3rd-6th September
Outdoor performance at Mothecombe Gardens, 1.30pm & 7pm

A modern play by Jez Butterworth that paints a vivid portrait of life in a rural Wiltshire village, Jerusalem is set against the backdrop of Johnny 'Rooster' Byron's chaotic encampment.

As the story unfolds, he and his misfit friends revel in a world of hedonism, camaraderie, and the threat of eviction looming overhead.

For more details and to book, go to flete.co.uk/ events.

PRIZE BINGO

Saturday, 6th September
South Brent Village Hall
Doors open 6.45pm, eyes down at 7.30pm.

A prize bingo in aid of Devon Air Ambulance.

Lots of great prizes to be won. There will be a raffle and tombola, plus tea, coffee, cakes and more.

All welcome.

CLASSIC CAR SHOW

Sunday, 7th September
11am-4pm, Lyneham Estate near Yealmpton
Saltram Rotary invite you to its classic car show in the grounds of the Lyneham Estate near Yealmpton. Classic cars, tractors, motorcycles and more will be on display.

The South Hams Singers and a jazz band will be performing, and there will be

food and craft stalls, drinks bar and bouncy castle.

Adults £5, under 16s free.

PARTY IN THE PARK

Sunday, 14th September
Victoria Park, Ivybridge

This free family fun day starts with open air worship with live music at 10.30am, then from 12 noon there will be lots to do for all the family including crafts, bouncy castle, face painting and more.

There will also be a BBQ, cakes and other refreshments.

Organised by Ivybridge Methodist Church.

LIVE MUSIC – SARAH MCQUAID

20th September
The Watermark, 7.30pm

Sarah McQuaid's lush, chocolatey voice combines with her engaging personality, "subtle mastery onstage" and "brilliant musicianship" on acoustic and electric guitars, piano and (occasionally) drum to create a truly immersive experience.

Born in Spain, raised in Chicago, and holding dual Irish and American citizenship, Sarah, now settled in rural England, brings the eclecticism of her background to her "captivating, unorthodox songwriting" and choice of material.

Spanning genres and defying categorisation, Sarah's music needs to be savoured in person to be fully appreciated.

For more details and to buy tickets, go to [ivybridge watermark.co.uk](http://ivybridge.watermark.co.uk). For more

what's on at The Watermark, see the back page.

AUTHOR TALK

Wednesday, 24th
September. Ivybridge Library, 2.30pm

Author and broadcaster Robin Ince will be talking about his new book *Normally Weird and Weirdly Normal: My Adventures in Neurodiversity*.

Tickets are just £5 to include refreshments and are available from the library.

Robin is a patron of Libraries Unlimited – which runs Ivybridge Library – and a huge supporter of public libraries. It should be an excellent afternoon.

DARTMOOR OUTDOOR FESTIVAL

29th August-5th September

Various venues

The Dartmoor Outdoor Festival is a week of events that give you the opportunity to explore hidden gems, try some new activities and discover the real Dartmoor.

From guided walks to film showings, from climbing sessions to navigation workshops, from the festival's very own letterbox trail to live music, there will be something for everyone.

Whether you are local and want to explore a side of Dartmoor you've never experienced or are visiting from further afield, it will be a celebration of outdoor adventures and community for people of all ages.

Visit [dartmooroutdoor festival.co.uk](http://dartmooroutdoorfestival.co.uk) for more information.



Ivybridge YOUTH FOR CHRIST

MINI GOLF 1 DAY ONLY

at The Bridge

Leonards Rd., Ivybridge, PL21 0SL

11am - 8pm
Monday 1st September 2025

£5 Adults
£3.50 Children (5-17 years)
£15 Family of 4

CHARITY NO. 1118117

If you're returning to learning after a break, looking to change careers, or simply want to support your children's education, now is the perfect time to get started with Learn Devon's autumn courses.

The adult education provider offers in person courses at a number of venues across West Devon as well as a number of online learning pathways.

Through its online provision, adult learners can take part in GCSE and functional skills qualification courses as well as courses for work, employment and English language skills.

The online options are ideal for those who have limited access to travel or have caring responsibilities.

Learn Devon's latest programme includes GCSEs



and functional skills in English or maths – key qualifications that can open doors to employment and career progression, as well as greater confidence in everyday life.

Fast-track programmes are also on offer, ideal for those looking to quickly

gain qualifications while balancing work or family commitments.

In addition to core subjects, Learn Devon has expanded its skills and development programme to include qualifications in mentoring, early years, self-employment and

sectors such as education, mental health, and nutrition.

Courses are designed with adult learners in mind, featuring small, welcoming groups and supportive tutors who are passionate about helping people succeed.

Learn Devon has recently opened a new office in Tavistock, offering people the chance to speak face-to-face with its customer support team about qualifications and courses.

Learn Devon's mission is to make learning accessible and rewarding for everyone. If you, or someone you know, missed out on qualifications at school, this could be the opportunity to turn things around.

i To find out more and enrol, visit www.learndevon.co.uk/ course

learndevon >
adult learning and skills

Adult education courses in Devon

Learn Devon offers free, face-to-face and online courses and qualifications for adult learners across Devon. New courses starting throughout the year.

Visit the website or contact our team to find out more and enrol.

www.learndevon.co.uk >

English and maths GCSEs and Functional Skills qualifications starting in September 2025.
Contact our team to enrol

IVYBRIDGE BREWING CO

Come and Visit Ivybridge's Own Brewery and Taproom

LOCATED ON THE BANKS OF THE RIVER ERME

We are a social enterprise that changes the lives of people with learning disabilities and autism.

See where we brew our award-winning beers and meet our wonderful team.

**VISIT OUR NEW TAPROOM.
TASTE OUR BEERS.
BUY BEER FROM OUR SHOP.
COME TO OUR FOOD EVENTS.**

WE LOOK FORWARD TO WELCOMING YOU!

 **GREAT BEER CHANGING LIVES** Find us at: 3, Glanvilles Mill Ivybridge, PL21 9PS

New
season
from
Dolcezza



New
hours

21 Fore Street
Ivybridge
PL21 9AB

Diana
BOUTIQUE

Tue, Thur & Fri
10am-3pm
Sat: 10am-1pm

info@dianaboutique.co.uk 01752 894562 www.dianaboutique.co.uk

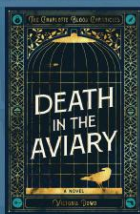
THE IVYBRIDGE BOOKSHOP

Upcoming Events - Meet the Authors!



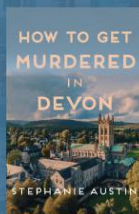
Victoria Dowd
Death in the Aviary
Thu 4th Sept, 5:30pm

December 1929, and young back-room journalist Charlotte Blood is sent to the isolated Ravenswick Abbey in the wilds of Dartmoor to investigate the murder of the heir to the Ravenswick fortune.



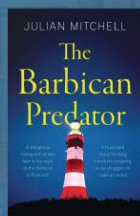
Stephanie Austin
How to Get Murdered in Devon
Thu 11th Sept, 5:30pm

When Juno Browne purchased a car for her lover, Daniel Thorncroft, she was not expecting that the previous owner would lock a dead body in the boot.



Julian Mitchell
The Barbican Predator
Tue 16th Sept, 5:30pm

A deranged misogynist striking fear in the Plymouth Barbican, a glamer found dead on the beach at Bovisand, and a dognapping gang operating across Devon. DI King is on the case.



Free to join, please email info@ivybridgebookshop.com to register
The Ivybridge Bookshop
18 Fore Street, Ivybridge
Tel 01752 963 521
www.ivybridgebookshop.com

CARING CHARITY APPOINTS **NEW TRUSTEE**

Ivybridge Caring and Ivybridge Memory Cafe are delighted to announce that Roger Croad has joined them as a trustee.

Roger represented Ivybridge on Devon County Council from 2005 until standing down earlier this year. He served in many roles and was a cabinet member.

Roger said: "I am very pleased to accept the offer to become a trustee and join the excellent team of volunteers who do absolutely sterling works on behalf of the community of Ivybridge and the immediate hinterland.

"I have admired their work for a long time now

and have been pleased to support over the years."

Ivybridge Caring is a voluntary organisation which aims to promote the independence and physical and mental well-being of older and isolated people within the area of Ivybridge, Cornwood, Lutton, Sparkwell & Harford.

Roger (*pictured above right*) has lived in Ivybridge for 45 years and with his wife Diane has brought up his family here – his two daughters attended Stowford Primary School and the community college.

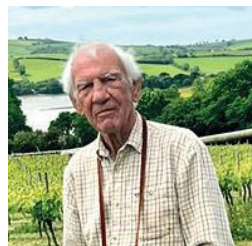
A very experienced operator, from 1988 to 1997 he was the director of safety at London Underground

and before that an army officer with 25 years' service around the world.

"It has been my very great privilege to represent Ivybridge at County Hall for the past 20 years," commented Roger.

"Reflecting back, in my first election address I said that I wanted to achieve four major improvements for the residents of Ivybridge: a new and improved library (remember the Keaton Road library?); a new and enlarged recycling centre; put a stop to all residual waste being dumped into landfill; and to greatly improve the air quality in Western Road.

"I am pleased to say that I did achieve all four pledges.



"The Watermark opened in 2008 with a new library, the recycling centre was built and removing parking on Western Road has greatly reduced air pollution.

"I also chaired the South West Devon Waste Partnership, steering the concept and construction of an energy-from-waste facility which has eliminated all waste to landfill in South and West of Devon."

www.ivybridgecaring.co.uk

WE BUY GOLD

ALSO SILVER & COLLECTABLES

Hectors House Antiques Centre

112 Ridgeway, Plympton PL7 2HN

We stock gifts for all occasions, antiques, vintage items, art, gold and silver and 3 floors packed with conversation pieces from around the world. Bring us your Antiques and Collectables and your unwanted Gold & Silver.

WE PAY TOP PRICES! Call us now on 01752 341681

WE ALSO BUY:

Military Items, Watches and Clocks, Coins and Stamps, Vintage Toys and Trains
Postcards and Old Books, Costume Jewellery, Bank Notes
BOX THEM UP AND POP IN FOR A CASH OFFER!

AMAZING GIFTS FOR ALL OCCASIONS



**IVYBRIDGE
CARING
VOLUNTEERS**

IT'S OUR 16th YEAR

More volunteers wanted

*Can you give an hour or two a week
to help a lonely elderly person?*

Drop in for a chat Weds/Thurs mornings in the
Community Room, Top Floor, The Watermark, Ivybridge
or call us on

07791 239357

or email info@ivybridgecaring.co.uk



FULL CIRCLE MOTORS

Mechanical Repair, MOT's and Servicing on all makes of Cars and light Commercials



Class 4 - Cars



Class 5 - Minibus



Class 7 - Van

Servicing & Repair | Diagnostic Services
Air Conditioning | Key Cutting & Programming
Mot's | Courtesy cars available

HERE WHEN YOU NEED US

Ermington Road, Ivybridge, Plymouth, PL21 9DG
Tel: **01752 698282** Fax: **01752 698291**
E-mail: info@fullcirclemotors.co.uk
Find us at www.fullcirclemotors.co.uk



We also cut and program ignition keys
both standard and laser key cutting machines, our state of the art innovative
automobile key cutting solution for any vehicle. Ask in store for details



NEWS

REMINISCENCE BOX OFFERS SHED LOAD OF MEMORIES

The Share Shed is delighted to introduce a new addition to its collection, the **Reminiscence Box**.

This carefully curated box is designed to support older adults and people living with dementia. Each item has been selected to stimulate the senses and spark memories, curiosity and connection.

Kindly donated by Conversation Works (see their advert on page 19), the Reminiscence Box is a gentle and powerful tool for building relationships and supporting wellbeing through conversation and shared experience (and only

£2.50/week). Ideal for carers, families and community groups.

The Share Shed can also help you Borrow for a Better Summer. If you are looking to tackle a garden project, head off on a camping adventure, or simply try out something new without



W G Friend & Son Ltd

More than just an 'ordinary' garage

FRIEND'S GARAGE

8-10 Stowford
Business Park
Ivybridge
01752 690584

MOTs • Servicing • Repairs • Brakes • Tyres • Exhausts
MOTORBIKE & SCOOTERS

Sales • Repairs

CYCLES FOR ALL THE FAMILY

Servicing • Repairs • Accessories • Clothing



FRIEND'S SERVICE STATION

Leonards Road,
Ivybridge
01752 690717

Petrol • Car wash • Jet wash • Vacuum

Premier CONVENIENCE STORE

Essential groceries • Wine, beers & spirits

Hot food including Devon pasties and pies

Hot coffee • Collect BP points





having to buy it, The Share Shed – A Library of Things can help.

Calling at Ivybridge, and South Brent, the Share Shed allows people to borrow useful items rather than buy them, saving money and reducing waste.

From carpet cleaners and



Kathrine Bailey (left) of Conversation Works hands a Reminiscence Box to Mirrella from the Share Shed

tents, to pressure washers and chocolate fountains, this travelling project offers hundreds of items that you can access for a fraction of the cost of buying new.

Free annual membership is available to low-income households, making it easier for everyone to access the things they need without cost getting in the way.

The Share Shed visits Ivybridge every Thursday at the Ivybridge Market in Glanvilles Mill car park and South Brent every Friday at the Old School Community Centre between 10am to 12noon.

To find out more, join, or browse the ever-increasing catalogue of useful, fun and practical items available, head to shareshed.org.uk.



CONGRATULATIONS

Congratulations to Sandra and all at Erme View Pet Supplies in Glanvilles Mill, which celebrated its 10th anniversary last month.

In a post on social media, they said: "We opened the doors 10 years ago today! We have had such great support from you all.

"Here's to another good few years hopefully and we thank you for helping us trade for 10 years!"

Mon-Fri: 8am-6pm Sat: 8am-12.30pm | billlomasmotorservicesivybridge.co.uk | billlomasmotorservices@btconnect.com

BILL LOMAS MOTOR SERVICES

Blachford Road, Ivybridge // Tel: 01752 896 107



Impeccable customer service



Providing complete care



Courtesy car & collection available

30 YEARS' EXPERIENCE

Bill Lomas Motor Services is your one-stop-shop in Ivybridge for all of your vehicle servicing and repair requirements.



- Servicing • Repairs • MOTs • Tyres • Diagnostics
- MOT chassis repairs • Gearbox repairs • 4-wheel laser wheel alignment

FARMING TRADITIONS

By Andrew Jewell

The word 'harvest' comes from the Old English word *hærfest*, meaning 'autumn', when the gathering of the food from the land was completed. A plentiful harvest ensured that a community would be fed throughout the bleak winter months.

Harvesting the cereal crops was historically carried out entirely by hand, using sickles and later bagging hooks and scythes, all back-breaking physical work. Once cut, a second gang of workers, quite often women, would follow behind tying bundles into sheaves. A further gang would then pick them up and pack them into stooks.

In Devon, typically 10 sheaves were stacked against each other to both keep the grain heads off the ground and allow air to flow through the stack to dry the crop. The stooks could remain in the fields for several weeks before being brought to the barn.

Before mechanised threshing machines existed, the stalks had to be repeatedly hit with flails on the barn floor to remove the grains. A winnowing machine would then be used to separate the chaff, the outer covering. Many are familiar with the expression of 'separating the wheat from the chaff', which in its modern context means to extract the important parts.

It was believed that the

very last sheaf of the annual harvest – called 'the neck' – possessed special properties, namely it contained the spirit of the corn field. Having such importance, the neck was always kept and, in some parts, made into a symbolic corn dolly. Originating from pagan custom, the corn dolly would ensure the continuation of an abundant and healthy crop the following year.

On 'Plough Monday', the first Monday after Twelfth Night, the sheaf or dolly would be cast into the first furrow and returned to the soil. If this did not happen then the harvest was doomed to failure and the farmer faced a harsh winter. Plough Monday marked the return of man to his labour after the yuletide interval.

After working long arduous days in the searing heat of the summer sun, the farmer and all his workers always looked forward to the celebratory feast. The farm workers would adjourn to the farmer's barn or kitchen for a hearty meal all washed down with a liberal supply of ale, or more commonly in these parts cider. At one time, agricultural labourers had a daily allowance of cider which formed part of their weekly wage and during the harvest period consumption increased dramatically.

The gathering and

subsequent feast was not always restricted to the farm workers and certainly in earlier times it was open to everyone in the parish, an event referred to as 'Harvest Home'. Villages were decorated with flowers and foliage and dancing and merriment was in abundance.

Cider has been made in Devon for centuries. It is thought that orchard cultivation arrived in England with the Romans. Later the Normans, with their great love of apples, introduced new varieties of cultivated tannic and acidic apples.

As cider apples are relatively hard, they warrant heavy processes to extract the juice. The initial stage was historically 'pounding'.

Ivybridge had its own cider pound house which eventually gave its name to Pound Farm behind Grosvenor Court.

The first mechanical mills were horse powered. A large heavy round stone, called a runner, was supported on its edge within a groove of a circular stone trough called a chase. The upright stone was pivoted in the centre of the trough and drawn around by a horse. Small quantities of apples were placed into the chase and as the horse drew the runner around, the fruit was crushed into a pulpy mass called pomace. This

was then placed into a screw operated cider press to extract the juice. The extracted liquor would then be left to ferment in large vats.

Once the cider was ready for consumption it would be drawn off into hogsheads or barrels and either kept by the farmer for his own use or sold to a cider merchant.

Another old farming tradition took place on the Eve of Epiphany, when the farmer, attended by his workmen, went to the orchard with a large pitcher of cider, and there, encircling one of the best bearing trees, would make a toast before throwing some cider against the roots of the tree. This tradition was termed 'hollowing to the apple trees', which today is more commonly known as 'wassailing'. With pagan roots, the ceremony was undertaken to ensure a good crop of fruit the following autumn by scaring away the evil spirits.



Scan for lots more local history



www.ivybridge-heritage.org



MILLSWOOD
Day Nursery

**Explore.
Learn. Grow.**



We are proud to have
been graded **Outstanding**
once again by Ofsted.

February 2025



**Call to explore our
space — 01752 698224**

- 0 - 5 year olds
- 8am - 6pm
(7.30am starts available)
- 51 weeks a year
- Fresh home cooked meals

millswoodnurseries.co.uk



Stowford Nursery

Respect

Excellence

Friendship

**We pride ourselves at Stowford Nursery on offering children a
stimulating environment with enriching learning activities.**



**We explore and
learn through play**



Jump in the tyres



Dig in the sandpit



Hunt for bugs



Play in the mud kitchen



We are a term time only setting with
wrap around options
8.00am-5.45pm.

We have a highly qualified,
experienced and committed team
who provide the best start to
a child's educational journey.

**Call to arrange a visit today!
01752 894163**

www.stowford.devon.sch.uk
Stowford School, Exeter Road,
PL21 0BG

LITTLE ORCHARD

MONTESSORI NURSERIES

www.littleorchardmontessori.co.uk

littleorchard123@btinternet.com

01752 893111



LITTLE ORCHARD
LEE MILL
MONTESSORI NURSERY

Ofsted
Outstanding

Each child is different, that's why our nurseries are different...

LITTLE ORCHARD
WOODLANDS
MONTESSORI NURSERY
TEL: 01752 658567

Situated in the grounds of Woodlands Park Primary School, Ivybridge and conveniently is just five minutes from the A38. We also manage a Breakfast and After School Club.

LITTLE ORCHARD
LEE MILL
MONTESSORI NURSERY
TEL: 01752 893498

Situated in Lee Mill Industrial Estate, this is our largest setting boasting a huge outdoor space. This setting has recently received an **Outstanding Ofsted** report.

LITTLE ORCHARD
SPARKWELL
MONTESSORI NURSERY
TEL: 01752 837883

In a rural, village location on the outskirts of Plympton, Plymouth and conveniently situated just five minutes from the A38. Enjoys beautiful outside facilities.

LITTLE ORCHARD
CHADDLEWOOD
MONTESSORI NURSERY
TEL: 01752 202193

Located in Plympton at the heart of a bustling residential area, close to local shops, and a play park. The nursery is spread over 3 floors, with each room covering a different area of the curriculum.



At Little Orchard Montessori Nurseries we aim to provide a caring, friendly environment where your child is encouraged to follow their own interests, learn at their own pace and have fun whilst doing so.

We use the highly acclaimed Montessori Method to ensure we bring out the very best in every child.

Freshly cooked meals by a qualified chef

Free Book Bag for all over 2's

Term Time Spaces available

No charge for Bank Holidays or Christmas

Special Offers available (including sibling discount)

A variety of sessions available



IVYBRIDGE PODIATRY

INGROWING TOENAILS

Ingrowing toenails are a very common issue, especially in the big toes.

They can be caused by footwear, sport, trauma and nail shape. Often they are technically not piercing the surrounding skin, but are sitting very tightly against it and causing pain and inflammation. This can progress into a breakdown of the skin and subsequently an infection may occur.

There are a couple of treatment options I can offer at Ivybridge Podiatry:

■ **Conservative treatment** – routine cutting back of the nail to reduce pain



By Victoria Wanyu
BSc (Hons), MRCPod
HCPC Reg: CH32103

and stress in the area. Protection for the area with padding to reduce additional pressure on the area, and advice on prevention of recurrence.

■ **Nail surgery** – for recurring issues it is advised to undergo nail surgery to try

Put your feet in safe hands

Ivybridge Podiatry
@ Nature's Larder
10 Glanvilles Mill • Ivybridge
01762 426075 / 07369 223733
www.ivybridgepodiatry.com | feet@ivybridgepodiatry.com

to produce a permanent solution. Nail surgery is a minor surgical procedure that I carry out under a local anaesthetic. It is removal of the problematic portion of the nail, or in some cases the entire nail, followed by chemical cauterisation to try to eliminate regrowth. Regrowth is eliminated in approximately 96% of

cases.

If you are interested in having treatment for an ingrowing toenail, please contact me to book an appointment, or for further information.

Ivybridge Podiatry
01752 426075
07369223733
feet@ivybridgepodiatry.com
ivybridgepodiatry.com



COLLABORATIVE COUNSELLING

Providing Holistic Tailored Counselling for a range of areas, including:

Anxiety, Depression, Stress, Grief, Loss & Trauma.

Working collaboratively to support you through whatever challenges you are facing.

Nicky Jilks MNCPS (Acc)

Local Qualified Accredited Counsellor

07303 044 787

www.collaborativecounselling.co.uk

2 Pynewood House, 1A Exeter Road Ivybridge PL21 0FN



Living with memory problems or mild to moderate dementia?

Ivybridge Cognitive Stimulation Therapy Group (CST)

Cognitive Stimulation Therapy helps through:

- Improving memory, communication, concentration & thinking skills
- Increasing confidence & wellbeing
- Helping to delay cognitive decline

Thursday afternoon 1.30 - 3.30pm

at St John's Church Hall

Blatchford Road, Ivybridge PL21 0AD

To find out more about CST, the group and how to book a place please contact Kathrine

m: 07899 993134

kathrine@conversationworks.co.uk

www.conversationworks.co.uk



Community Interest Company
Registered Company Number 14087082




01752 880819

SOUTH DEVON FOOT CLINIC
PODIATRY / CHIROPODY SERVICES
 Helping you take the right steps to better foot health...

15 Fore St, Yealmpton, Plymouth PL8 2JN
 01752 880819 | www.southdevonfootclinic.co.uk




LISA'S
MOBILE HAIRDRESSING




All your hairdressing needs in the comfort of your own home

Call 07769 206644

SOUTH HAMS PHYSIO +

Clinic now at
 56b Fore Street
 Ivybridge



Experts in
 Neurology and
 MusculoSkeletal
 Physiotherapy

Premier Physiotherapy Clinic in Ivybridge
 We pride ourselves on providing quality physiotherapy when it is needed.
 All our physiotherapists are highly skilled and registered with the HCPC and Chartered Society of Physiotherapy.

Services
 We offer a variety of physiotherapy treatments

- Manual Techniques
- Treatment of pain
- Mobility
- Rehabilitation
- Physiotherapy reports

Contact us
 South Hams Physio
 56b Fore Street,
 Ivybridge
 PL21 9AE
 01752 691604
info@southhamsphysio.co.uk
southhamsphysio.co.uk

 **PLYMOUTH CITY CENTRE DENTAL PRACTICE**

A Confident Smile, A Confident You!

Discover the Lasting Benefits of Quoris(Chrome) Implants!

- ✓ Feel Like Your Natural Teeth
- ✓ Long Lasting
- ✓ Comfortable Chewing
- ✓ No Food or Drinking Restrictions

Book your consultation today for only **£80!**
 Call us on 01752 661631




The Watermark ROOM HIRE

ERME COURT - LEONARDS ROAD - IVYBRIDGE

Trying to find a venue for your community group or youth group? Looking for a venue for a family party like a birthday or an anniversary? Need an affordable and flexible wedding venue? Here at The Watermark we have a selection of rooms for hire for a variety of activities. Catering also available. Competitive prices, why not ask for a quote. The Watermark could be the place you never knew you needed!

01752 892 220 / info@ivybridgewatermark.co.uk / ivybridgewatermark.co.uk

**THERE'S
STILL
TIME TO
SIGN UP
FOR**



There is still time to sign up for The Summer Book Quest at Ivybridge Library.

Nearly 300 children have already done so, and for those yet to sign up, the quest continues until 6th September.

No matter what or how children like to read, all can join. Read, complete an activity and collect stickers for a chance to earn a certificate and a cool ninja

starfish keyring! Children who complete the Quest will also receive a voucher for a free swim at a Fusion swimming pool, and a voucher for a free visit to The Watermark cinema.

Ivybridge Library also has a range of free or low cost activities happening at the library over the summer – for details visit discover.librariesunlimited.org.uk/-/ivybridge-library#/.

All Mod Cons, by Ann Owens – Clubs & Groups news on pages 22, 24 & 25



Nature's Larder

Health Store & Natural Health Centre

Health Foods • Supplements

Beauty Products

Complementary Therapies

10 Glanvilles Mill • Ivybridge • 01752 894197
www.natureslarder.co.uk



Ivyfridge

ST JOHNS CHURCH HALL BLACFORD ROAD PL21 0AD

**COMMUNITY FRIDGE AND LARDER
FREE TO ALL – OPEN 24/7
PLEASE TAKE ONLY WHAT YOU CAN EAT
AND LEAVE ENOUGH FOR OTHERS**

**Share Food,
Reduce Waste
Protect the Planet**



Support our Community's fridge by

**SHARING FOOD YOU WON'T EAT
BECOMING A FRIDGE MONITOR
OR FOOD COLLECTOR/DRIVER
DONATING FOOD YOU GROW
SPREADING THE WORD**

**Contact IvyFridge on Facebook
Hello.Ivyfridge@gmail.com**



Moor Podiatry



Louise Hinds

Podiatrist
MRCPod/H.C.P.C. Reg

Home visiting practice

**Specialising in High Risk Patients (Diabetic footcare).
Diabetic wound care/post surgical wound care.
Routine Care (Nails, Corns, Callus).
Vascular Assessment.**

30 years NHS experience

• Onward referral/GP letter.

Treatment in the comfort of your own home.



Tel - 07518 789992



Forthcoming walks for Ivybridge Walking Club are as follows (all Sundays):

- 24th August
- 7th September
- 21st September

Check out the Diary page on the club's website for more information.

📍 ivybridgewalkingclub.com

Ivybridge Probus Club offers a friendly atmosphere for enjoying good company, good food and good conversation..

It meets on the first Tuesday of each month at the Rose & Crown in Yealmpton. Members gather at 12 noon, with lunch at 1pm.

Every other month, the club hosts a guest speaker, offering engaging talks on a wide range of topics.

📍 Contact secretary Ritsaert von Oven at 01752 896155.

At July's Ivybridge Flower Club's monthly meeting, members where taken on a floral journey from Land's End to Scotland.

Newly-qualified NAFAS demonstrator Karen Smith from Littlehempstone returned with a captivating demonstration.

Her colourful designs ranged from traditional to contemporary, all beautifully complemented by props. The arrangements were raffled off to 10 lucky winners.

Interested in what the Ivybridge Flower Club offers? Your first meeting is a free 'taster'. Visitors are welcome at subsequent meetings for £10, with raffle tickets and refreshments available.

The club meets every second Monday of the



Ivybridge Trefoil joined other Trefoil guilds from all over Devon last month for a day of fun at 'Taw Bottom', the Devon guide camp site near Okehampton.

The theme for the day was 'let's be detectives'. We did puzzles and followed a trail of clues around the site to work out the murderer, weapon, place and date.

We also had our own mystery quiz, brilliantly devised by Mavis and Debbie, where trefoilers came to our gazebo and had to guess the real Miss Marple from the story and clues in her suitcase.

Money was raised on the

day for Devon Blood Bikes.

We heard from a volunteer biker all about what this amazing organisation do and had a chance to sit on his bike and rev the engine.

Trefoil is an international organisation of adults who have been involved in the guiding movement, or support the aims and ethos of guiding. It supports all sections of guiding, sometimes financially, raises money for our chosen charity and have a lot of fun together.

📍 To find out more, or if you would like to 'try us out', contact Joy on 07813 609317.

month at 7.30pm at The Bridge, Leonards Road. The next meeting is on 8th September.

Ivybridge Theatre Company had a great turnout at their recent open evening, welcoming many newcomers.

Rehearsals are underway for their November production of "Life and Beth" by Alan Ayckbourn at The Watermark. Plans for February's pantomime "Snow White" are also in progress.

The group is excited about

organising drama workshops and murder mystery evenings.

New members are welcome, whether you're new to drama, an experienced performer, or interested in backstage activities.

Meetings are Wednesdays at 7:30 pm in Chapel Place, Fore Street, Ivybridge.

📍 Contact Teresa Davis at 07554 990902 or howard-davis@live.co.uk.

➔ **More Clubs & Groups news on page 24**

So Social Ivybridge



A place for everyone

WEEKLY EVENTS

Cuppa and chat

Every Wed at 11am and Sat 11.30am at The Bridge Cafe.

Ivybridge Bloomers

Every Sunday at 2pm. Meet at Harford Rd car park.

So Social German

Every Monday 5.30-6.30pm at The Sportsman's Inn.

So Social Spanish

Each Wed 10am at Rochelles and 5.30pm at The Sportsman's Inn.

Social Snaps Photography

Times and locations vary, get in touch for more info.

Budget Beanz

Times vary, get in touch for more info.

So Supportive

Each Thurs at 2pm at The Bridge Cafe.

Art n'Chat

Each Thurs at 2pm at The Bridge Cafe.

Social Stitches (crochet & knitting)

Every Thurs evening at 6.30pm at The Imperial.

Contact us

for more info:

sosocialivybridge@gmail.com

PALLADIUM BUILDING SUPPLIES

CREATE YOUR PERFECT OUTDOOR SPACE WITH US!
WIDE RANGE OF DECORATIVE CHIPPINGS AVAILABLE FROM STOCK.



Blair Road Ivybridge PL21 0UR, tel 01752 896140, ivybridge@palladiumbm.co.uk
Higher Union Road Kingsbridge TQ7 1EQ, tel 01548 852792, kingsbridge@palladiumbm.co.uk

www.palladiumbm.co.uk

KPT TIMBER & BUILDING SUPPLIES

"Pour yourself a brew and we'll get it to you!"

 01752 393939 www.kpttimber.co.uk

Local family business - serving Plymouth, Ivybridge, South Hams and Tavistock areas






- Windows • Doors • Bi Folding Doors
- Composite Doors • Patio Doors
- Conservatories • Porch
- Conservatory Roof Replacement
- Misted/Broken Glass
- Hinges, Handle and Lock Replacement

Guaranteed for 10 Years
Wide Range of colours

Tel: 07766 202 091

www.southhamsdoubleglazing.co.uk 
email: southhamsdoubleglazing@yahoo.co.uk

South Hams Double Glazing, 37 Torre Close, Ivybridge, PL21 0BX



LOGIC ELECTRICAL & FIRE

NEED A RELIABLE ELECTRICIAN?

ABOUT US

Logic Electrical & Fire LTD is a fully insured, Napit and TrustMark-endorsed company with 17+ years' experience serving South Devon. Founded on military values of discipline, punctuality, and trust, we offer reliable domestic and commercial electrical services, including fire safety systems. We provide free quotes and transparent pricing, with a strong focus on safety, quality, and professionalism. Contact us today for service you can trust.

OUR SERVICES

- ✓ House rewire full & partial
- ✓ Consumer unit upgrade
- ✓ Sockets & lighting
- ✓ Outdoor power & lighting
- ✓ Landlords EICRs
- ✓ Smoke alarms

WHY CHOOSE US?

- ✓ NAPIT EAS accredited
- ✓ Trustmark endorsed
- ✓ Fully insured
- ✓ Free quotation

CONTACT US

office@logic-electrical-fire.com



07361 494763
07495 656266



Ivybridge & District Camera Club is looking forward to another season of talks, discussions and outings, starting on 9th September with a "Show and Tell" where members can inspire us with new images, ideas and experiments.

Next, on 23rd September, there is a Zoom talk from Roger Hance FRPS, winner of Amateur Photographer of the Year award in 1990.

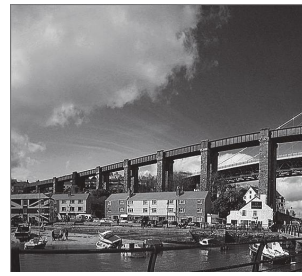
Roger's photography generally focuses on natural history but he is also very accomplished in other areas including landscapes, sport, portraits and photojournalism.

Ivybridge & District Camera Club is a small, friendly club and welcome new members – users of phones or digital or film cameras are all welcome to join us and participate in our talks, image discussion evenings, competitions, learning groups and outings.

Non-members are welcome to come to a meeting or outing to see what we do, please contact us for details.

✉ ivybridgecameraclub@yahoo.co.uk

ivybridgecameraclub.org.
facebook.com/groups/IvybridgeCameraClub



The next Ivybridge U3A general meeting is on Monday, 18th August, in The Watermark (2pm).

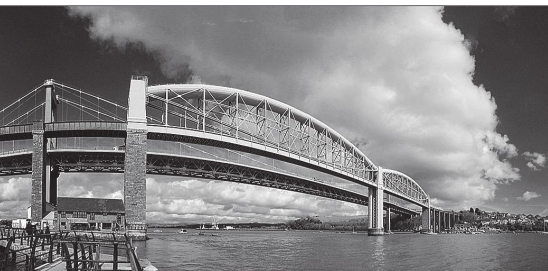
Guest speaker Zoe Harris, from Suez Recycling and Recovery, will talk about a wide range of topics, from a general view of the waste sector in the UK, to what happens to black bin waste, to waste legislation and new laws coming in.

Ivybridge U3A meets on the third Monday afternoon of each month in The Watermark.

✉ www.ivybridge-u3a.org.uk



Flower Bee, by Bridget Privett



TOP: Tamar Bridges, by Dave Rayner; ABOVE (L-R) Soft Rose by Sue Joselyn and Two Old Trees by Dave Rayner; RIGHT: Lamp Posts by John Caddick



For all your glass and glazing requirements

We are now recognised Installers of the Sure Flap Cat Flap.

We also supply and fit Staywell Cat Flaps & Pet Flaps.

cat flaps...

A pet door is found to be convenient by many owners of companion animals, especially cats, because it lets them come and go as they please, reducing the need for pet-owners to let or take the pet outside manually, and curtailing unwanted behaviour such as loud vocalisation to be let outside, scratching on doors or walls, and excreting in the house. They also help ensure that a pet left outdoors can safely get back in the house in the case of inclement weather.

Stop unwanted animals entering your home and give your pet their own door key.



Free Estimates call
01752 769832 or 07846 475217

I FIX I REPAIR I REPLACE

Multi-skilled
career tradesman
33 years'
experience –
established 1990
Friendly, honest
advice
Fully insured



Highest award of
5 Gold Crowns for
quality of work, service
and value for money,
by Trading Standards

BACK TAKING ON NEW JOBS

ROOFLINE MAINTENANCE

Soffit | Fascia | Guttering
Dry Verge installation

PLUS
**DEPENDABLE
MAINTENANCE
SOLUTIONS**

in and around the home
• No job too small •

Probably one of the best in Ivybridge for
quality work and attention to detail.
Photos of work provided to show job is
done correctly.

**NO
VAT
ON ANY
WORK**



David Walrond

www.wareandtare.co.uk

HAMMER AND MOW



FENCING/CARPENTRY AND GARDEN SERVICES

- ▶ FENCING
- ▶ GATES MADE TO MEASURE
- ▶ CARPENTRY
- ▶ HEDGE CUTTING
- ▶ GRASS CUTTING
- ▶ GARDEN MAINTENANCE

CONTACT 07938 996615

 Find us on
Facebook



- * qualified
- * fully insured
- * free quotes
- * local

WARE & TARE

PROPERTY CARE

LONG ESTABLISHED IVYBRIDGE COMPANY

01752 473528 or 07769 974152

Conveyancing

Moving house? We'll take the worry away.

Key services:

- Mortgages & Equity Release
- Tax-efficient Investment
 - Wills
- Lasting Power of Attorney
- Protection Insurance
- Trusts & Estates

Let us take care of the legal and financial concerns with our efficient, accredited and competitively priced conveyancing service.

We also help with associated issues like financing, changes of circumstances or relationship breakdowns, cohabitation agreements, and Wills.

Get in touch today to discuss your needs.



Conveyancing
Quality

Lexcel
Legal Practice Quality Mark
Law Society Accredited

SW Law & Finance - for every stage of life

01752 205202 | swlaw.co.uk

SW Law & Finance

SW Law Ltd - This firm is regulated by the Solicitors Regulation Authority (No 558154)

SW Financial Planning Ltd - This company is authorised and regulated by the Financial Conduct Authority (FCA No: 222033)

We visit
you in your
own home for your
convenience and privacy



Willwritersservices.co.uk

Member Of Society Of Will Writers

We are a long established, local, family run business, all professional, qualified and fully insured

WILLS ~ LASTING POWER OF ATTORNEY
PROBATE ~ PROPERTY PROTECTION TRUSTS

EVERYONE NEEDS A WILL

Please do not think that all of your assets will automatically pass to your spouse or children – this often is not the case.

Martin Lewis and most of the financial journalists now advise everyone to take out a Lasting Power of Attorney. This is very important for older people as when in hospital they or their spouses often are not allowed to make decisions, without a LPA the social services step in instead.

Please do not fall for 'free' or cut-priced Will Services. They often come with many conditions and 'add ons'. *Our quotations are our prices.*

**SINGLE
WILL
£245***

As members of the
Society of Will Writers
we have to adhere to their
very strict code of practice



Safe to do
business with
Code Compliant

(*without a Property Protection Trust)

Contact us: 01752 770094 / www.willwritersservices.co.uk

MONEY FIRST...

SAVE The larger the deposit you can make, generally the lower the borrowing rate will be. So, the more you can save the better. You will also need funds to cover Stamp Duty, survey costs, legal costs, removals and a fund to equip the property.

Examine your budget

Make sure you can afford the repayments. Factor in your likely outgoings after the move. Utility bills and Council Tax may be higher, and you will need to take out buildings insurance.

Research the mortgage market

Do you know the difference between an interest only and a repayment loan or a variable rate, a fixed rate and a capped rate? Is the headline rate a short term special offer? Make sure you know how much the repayments will be immediately and in the future.

Can you afford to buy on your own? Consider buying a property from a housing association where you own a percentage of the property and rent the rest.

Watch your credit score

The better your rating the more likely your mortgage application will be successful. Check your rating and have errors removed. Register to vote at your current address to prove stability. Improve your rating by buying with a credit card and paying the debt in full at the end of each month.

Secure a mortgage agreement in principle

A mortgage agreement in principle is a letter or certificate from a lender to show that they will provide a mortgage loan up to a specific sum. You can use this to reassure sellers and estate agents that you have the money to complete the purchase.

THEN PROPERTY

Search for a property Use filters on online portals to select the price range, number of bedrooms, house type etc you are interested in. A map search will show what is available in the local area, and can also illustrate travel times from the property to key places.

Also establish a rapport with local estate agents who may notify you about new properties on the market before the details have been posted online.

Be methodical in your viewing

Use a checklist to make sure you do not miss anything. Take notes and pictures so that you can compare properties later. Ask direct questions. The agent is under an obligation

to answer them honestly. If they are evasive ask them to raise the question with the seller. Revisit short-listed properties at different times and days to see if it is busier and noisier.

Negotiate When you find the property you have been looking for you will not want to risk losing it, but as a first time buyer you are in a good position to negotiate. You have no property to sell, which is a real benefit to the seller.

Spend on the professionals

You will need a surveyor and a solicitor to check that the property is physically and legally sound. Make sure you are dealing with professionals that have good client care and keep you updated.

TOP TIPS FOR FIRST TIME BUYERS

GARD & CO

Buying your first home is an exciting time and a major milestone in most people's lives.

It can also be a daunting prospect. There is a lot to think about and organise.

Buying a home is one of the biggest financial commitments you will ever make and there is no opportunity to take it back for a refund if you decide you don't like it.

To help guide you through the process, Anthony Longville at Gard & Co Solicitors



highlights opposite the major areas you need to consider.

No Move, No Fee guarantee

Gard & Co offer a 'No Move, No Fee' guarantee. For details, scan the QR code. Alternatively, visit gardandco.com or contact them on 01752 648174.



South Hams

Accounting

by Simon Jilks FCCA

Your Local Qualified Accountant

- Business Accounts and Tax
- New Business Startup
- Tax Planning
- Personal Tax Returns
- Payroll and Bookkeeping

ACCA

☎ 07726 798 358

✉ simon@southhamsaccounting.com

🌐 www.southhamsaccounting.com

POLICE DROP-IN SESSION

The Ivybridge Police Neighbourhood Team is holding a drop-in session in The Watermark on Thursday, 21st August, from 1pm.

As well as a chance to meet your neighbourhood team, you will be able to raise any issues that matter to you, and hear about the work being done to tackle concerns in the community.

For more information, please contact Ivybridge@devonandcornwall.pnn.police.uk.

WILDLIFE GRANTS SCHEME OPEN

The Wild About Devon Community Wildlife Grants scheme is now open for applications.

Funding up to £300 is available to support community wildlife initiatives, so if your organisation or community group has a great idea to support local wildlife and increase biodiversity, they might be able to help.

Applications are welcome from groups in the Devon Local Nature Partnership area, including not-for-profit clubs, registered charities, CICs, councils, church groups, schools and PTFAs.

The closing date for applications is 12th September, 2025.

For more information and to apply scan the QR code.



Lorraine Hawkes (seated on the left) with her Queen Bee rose

WELLBEING WALKS CELEBRATION

About 40 people joined together last month to celebrate 20 years of wellbeing walks in Ivybridge.

After a walk there was a picnic in Filham Park.

Lorraine Hawkes, who with her late husband Fred started the walks, was presented with a Queen Bee rose in appreciation and a cake was cut and shared among those present.

ARTISAN MARKET RESUMES

Ivybridge Artisan Market resumes on 6th September after its summer break.

The market on the first Saturday of the month in Stowford Hall in The Watermark (9.30am-1pm) will run every month between now and Christmas.

There will be the usual regular artisans, plus some newer ones. All products are individual and made by the artisans who sell them.

The market runs a loyalty card scheme, where you collect a sticker when you spend £5 or more and when your card is full you get £5 to spend in the market.

Gift vouchers for the market are also available.

The artisans look forward to welcoming back regular and new customers alike.

ivybridgeartisanmarket@gmail.com or see its Facebook page.

STUDY WILL LOOK AT FEASIBILITY OF EXTENDING PLATFORMS AT STATION

Funding has been secured for a feasibility study into extending the platforms at Ivybridge Railway Station, which would allow more services to call at the station.

Working with Ivybridge Rail User Group, local councillors and the area's MP, transition charity PL:21 has secured the £20,000 of funding needed to pay Network Rail to proceed with a formal feasibility study into extending the platforms.

A relatively small extension – raising the level of



the ramps at either end of the platforms – would allow CrossCountry trains to stop at the station, which would

greatly increase the services stopping at the station.

PL:21 is working to make the area a more sustainable place to live and work.

LOCAL WIN AT CORNWOOD 10K

It was perhaps fitting that in the 20th year of the Cornwood 10K a local resident should win the race, and Erme Valley Harrier Ronnie Haynes duly obliged, writes Dave Fox.

Haynes, who has been in great recent form, led the race from start to finish.

Charlie Milward also ran well to take fourth place, whilst Helen Chapell won the overall female veteran award.

Haynes, Milward and Nick Bristow brought home the men's team prize.

The Harriers had a great turnout, with new father and son members John and Adam Griffiths making good debuts for the club.

There was also a junior 4K Fun Run, with Bluebell McBride first girl home.

Alison McEwing has also been in terrific form. She was first lady in the Lightning Bolt 10K in Langley Burrell, Wiltshire, her time of 35.56 a new ladies club and vet age record. In the same race, Simon Fitze also had a brilliant run to finish 15th overall and fifth vet 40 in a time of 35.09. The Wiltshire course is proving to be one of



Ronnie Haynes on the way to winning the Cornwood 10k

the fastest in the South West.

The Tavistock Town Relays again proved popular, with the Harriers entering eight teams. The Harriers female vet 55 team of Lynne Whitfield (7.09), Andrea Mitchell (7.56), Helen Chapell (7.16) and Carol Hansen (8.35) won their age category. The senior men's team of Ronnie Haynes (5.23), Charlie Milward (5.23), Peter Allen (5.45) and Simon Fitze (5.20) were fifth overall.

Elsewhere on the road scene, Charlie Millward took on the extremely tough Magnificent 7 mile race in Saltash and finished 13th overall in 43.52.

Peter Allen (36.47) and



Erme Valley Harriers who took part in the Cornwood races

Sally Erith (40.59) ran in the Exeter 10K. Allen also ran in the Plymouth 5 and finished fifth in 31.06.

At the Run Exe 5K July race, Luke Hayes was 15th in 16.33, Ken Summers ran 24.56 and Liz Bristow 25.18.

Further afield, Andrew Reed ran the Worsted 5 mile race in Norfolk, finishing 51st overall in 31.01.

The Harriers were well represented at the Ugborough Carnival Fun

Run race, with Lindsay Lane particularly impressive as she was first lady. Youngster William Rogers also ran well.

Offroad, the Harriers did well at the Cosdon Fell race. Chris Prall was fourth overall and first male 40. Becky Prall was second female 40, whilst Jenny Hayes was third female 40, with Lynne Whitfield third female 50.

Esme Prall was fourth overall and first U11 girl in the junior race.



Tavistock Town Relays female vet winning team (l-r) Lynne Whitfield, Andrea Mitchell, Helen Chapell and Carol Hansen



Rotary
Ivybridge

FLETE 10K

ONLINE ENTRIES
NOW OPEN

AND FAMILY FUN RUN

RACE OPTIONS = 10K / 5K / 1K AROUND THE SPECTACULAR
FLETE ESTATE AND ALONG THE RIVER ERME



HOWARD & OVER
SOLICITORS EST. 1914

Sponsored
by




*Parking
*Refreshments

Raising
funds for our
nominated
charities

Flete 10k is organised by Ivybridge Rotary Club. It is overseen by UK Athletics with official starter and adjudicator present to ensure compliance.

To register visit

<https://www.entrycentral.com/festival/4/68>



Sat 13 Sept 2025

Start times & prices
 10k - 2.30pm - £20/£18
 5k - 1.30pm - £10
 1k - 2.00pm - £5

Location - Flete Estate
 (Point to Point site)
 Off A379 East of Plymouth
 Leave A38 Plymouth via A3121
 P23 9NU
 What3Words: wolves.alive.inch

MONDAY

SOUTH HAMS CITIZENS ADVICE

09:30-12:30 The Watermark. Drop in consultations every Monday (excluding bank holidays).

SINGING MAMAS

10-11:30 Singing, cuppa & cake in the woods. FREE taster session, £10 after. Term-time. Booking: www.tothewoodsforestschoo.com.

DIGITAL SKILLS

10:00-12:00 Ivybridge Library. Learn basic digital skills with help from a friendly volunteer.

ST JOHN'S TODDLERS

10:30 St John's Church Hall, Blachford Road, Ivybridge. Toddler group for under 5s. Term time only. FFI: call Sheena on 01752 939757.

STAY AND PLAY 10:30-12:00 Ivybridge Library. For children up to 5 years old. No need to book.

COFFEE MORNING

10:30-12:00 The Hub, The Old School, South Brent. Donation. FFI: Contact Susanne, South Brent Caring - 01364 700282. Free/donation.

SOUTH HAMS COMMUNITY ORCHESTRA

10:30 Ivybridge Rugby Club. FFI see www.shco.co.uk £5/session payable termly.

RAMBLERS WELLBEING WALKS

10:00 Meet outside The Watermark. FFI: contact Tim 07745 650516.

LUNCH CLUB 12:00-13:15 The Old School, South Brent. Soups/ light lunch, a pud + tea/coffee & conversation. Book via South Brent Caring 01364 700282. £5 min donation.

VETERANS PEER SUPPORT GROUP

12:00-14:00 The Farmyard Cafe, Wotter. Contact Trevor Gracey on 07964 319683.

IVYBRIDGE TREFOIL GUILD

First Monday. Please contact Joy on 07813 609317.

U3A GENERAL MEETING

14:00-16:30 The Watermark. 3rd Monday of month (excluding bank holidays). FFI: 01752 658164/ ivybridge.u3a@gmail.com.

POLICE DROP IN SESSION

14:30 Ivybridge Library. First Monday of month.

SO SOCIAL GERMAN

17:30-18:30 Sportsman's inn. Informal conversation group. Any level. FFI 07413 176789.

RAF AIR CADETS

19:00-21:00 Cadet Centre, Filham Park. FFI: co.339@rafac.mod.gov.uk.

ERME WI 19:30 The Bridge,

Leonards Road. 3rd Monday of month. All welcome. FFI: contact 07779 534853.

IVYBRIDGE FLOWER CLUB

19:30 The Bridge, Leonards Road. Every second Monday. FFI: contact Lindsey Reid 01752 894579.

SEQUENCE DANCING CLUB

19:30-22:00 Lee Moor Public Hall. 01752 892741.

TUESDAY

WARM SPACE FOR ALL 10:00 St John's Church Hall, Blachford Rd. Every Tues. Contact Sheena 01752 939757.

LITTLE FISHIES PARENTS AND TODDLERS GROUP

09:30-11:00 The Bridge, Leonards Road. Term time. £2 per family. FFI: 01752 896974/ ruth.j.hammond@salvationarmy.org.uk.

RAMBLERS WELLBEING WALKS

10:00 Every Tuesday. Meet at Ivybridge Leisure Centre. FFI: Lisa Alford - 07582 350349 / lisa.alford@activedevon.org.

TODDLERS

10:00-11:30 Ivybridge Baptist Church. Term times only. 07516 085121 / iebc@hotmail.co.uk.

SO SOCIAL SNAPS

13:00 Informal photography group. Phone or camera. Free. FFI: search FB/07929 923649.

IVYBRIDGE COMMUNITY HUB

10:30-12:00 Ivybridge Library. www.innercompassguide.com/community-hub.

IVYBRIDGE FOOD CLUB

12:00-14:00 St John's Church Hall, Blachford Road Every Tuesday. The Community Cafe is open from 12-2pm, serving homemade food, and shopping, to prevent food wastage, is from 1-1.30pm. Everyone welcome.

IVYBRIDGE PROBUS CLUB

From 12:00 Rose & Crown, Yealmpton. 07780 150750 / rvonoven@icloud.com.

TUESDAY LUNCHES

12:15-13:30 Ivybridge Methodist Church. Children welcome.

IVYBRIDGE ARTY CRAFTY GROUP

13:30-16:30 Scout and Guide HQ, Blachford Rd. FFI: contact Gerry 01752 690176 or Hazel 01752 892438.

MEN'S TENNIS & PICKLE BALL FOR MENTAL WELLBEING

14:30 every Tuesday. South Devon Tennis Centre.

5th IVYBRIDGE RAINBOWS

18:30 Ivybridge Methodist Church. Contact Jenny 01752 894265 / ivybridgerainbows5th@outlook.com.

3rd IVYBRIDGE BROWNIES

18:00-19:30 Ivybridge Methodist Church. Contact Jenny 01752 894265 / 3rdivybridgebrownies@gmail.com.

CUBS

18:30-20:00 Scout Hut, Leonards Road car park. FFI: 1stivycubs@gmail.com or 1stivygsl@gmail.com.

ERME VALLEY HARRIERS**- SENIORS TRAINING**

18:00-19:00 Ivybridge Rugby Club. FFI: Keith Reed 01752 893573/ ermevalleyharriers.co.uk.

IVYBRIDGE JUDO CLUB

St John's Church Hall. Under 8-12 years 6.15-7.15pm; 12-16 years 7.15-8.15pm; 16 years + 8.15-9.45pm. FFI: contact Pete Whitfield for details - petewhitfield62@gmail.com.

ARMY CADETS

19:00-21:00 Cadet Centre, Filham Park. FFI: 1399boyn@armymail.mod.uk.

IVYBRIDGE COMMUNITY CHOIR

19:30-21:30 Douro Court. southdevonsingers@gmail.com / 07915 053950.

IVYBRIDGE & DISTRICT CAMERA CLUB

7.30pm on two Tuesdays per month alternating between Zoom and Bittaford Jubilee Hall. www.ivybridgecameraclub.org.

IVYBRIDGE YOUNG FARMERS

19:30 The Hunting Lodge, Cadleigh Lane. First Tuesday of the month. FFI: www.facebook.com/IvyYFC/ call 07472904700.

WEDNESDAY

IVYBRIDGE CARING VOLUNTEERS

09:30-12:00 The Watermark. Drop in for a chat about donating a couple of hours of your time for elderly people in the community.

MUSTARD TREE CANCER CAFE

9:30-12:30 Ivybridge Methodist Church. Second Wednesday of month. Drop in. FFI: 01752 430060 Facebook - Mustard Tree Macmillan Cancer Support.

SO SOCIAL SPANISH

10:00 Rochelles River Cafe & 17:30-18:30 Sportsman's Inn. Informal conversation group. Any level. No cost. FFI 07929 923649

WALK & TALK

10:30. Accessible 30+ min walk for those with limited mobility or wishing for company, with tea/cake at the end at The Hub, South Brent. Drop-in. Free/

donation.

LITTLE STARS 10:30-11:30 Ivybridge Library. Aimed at pre-school children looking at numbers, colours and letters. No need to book.

READ AND REMINISCE

10:30-12:30 Ivybridge Library. Listen to poems and stories read aloud. Share your memories over a cup of tea or coffee. Free. Contact Ivybridge Library on 01752 893140.

COMMUNITY CAFE

11:00-15:00 The Bridge Community Cafe. Everyone welcome. Facebook: So Social Ivybridge / call Shirley Weeks on 07934 999404.

SO SOCIAL - COFFEE MORNING

11:00-12:00 The Bridge Community Cafe. Everyone welcome. Facebook: So Social Ivybridge / call Shirley Weeks on 07934 999404.

IVYBRIDGE FOODBANK

13:00-15:00 Ivybridge Methodist Church. Open to all. FFI: www.ivybridge.foodbank.org.uk/email info@ivybridge.foodbank.org.uk/ 07706 457336. Food donations welcome 10am-12pm.

SO SOCIAL UKRAINIAN SUPPORT GROUP

13:00 The Bridge, Leonards Road. Last Wednesday of the month. FFI: search Facebook - So Social Ivybridge/phone 07934 999404 / connector@southhamsccvs.org.uk.

THE BRIDGE STROKE GROUP

13:30-15:30 Ivybridge Town Hall. Second Wednesday of the month. For details call 01752 896931.

IVYBRIDGE MEMORY CAFE

14:00-16:00 The Watermark. Fortnightly for entertainment, refreshments and a chat together. If your loved one is suffering from cognitive impairment give us a call on 07498746944.

FRIENDS DAY WEDNESDAY

14:00-16:00 The Old School, South Brent. Friendly fun group, games, quizzes, singing, themes, craft and more, open to all, particularly with dementia. FFI: Susanne on 01364 700282 for a Free/donation.

IVYBRIDGE BLOOMERS

14:00-16:00 The Leat Garden, off Fore Street. Search Facebook - Ivybridge Bloomers, see ivybridgebloomers.community or phone 07934 999404.

KNITTING GROUP

15:00-17:00 The Hub, South Brent. Friendly fun group, adults and children with an adult welcome, all abilities. Free/ donation.

1st IVYBRIDGE GUIDES 18:00-20:00. Timings and location can vary depending on the activity. FFI: contact Leah Parsons ivybridgeguides@hotmail.com.

4th IVYBRIDGE GUIDES 18:30-20:00. The location will depend on the activity. FFI: call Sharon on 01752 698656, fourthivybridgeguides@outlook.com.

IVYBRIDGE ROTARY CLUB 19:00 The Bridge, Ivybridge. 2nd and 4th Wednesday of the month. FFI: ivybridgerotary@gmail.com or see www.facebook.com/ivybridgerotary.

ERME VALLEY RANGERS 18:30-20:30. Part of Girlguiding for girls aged 14-18. Location will depend on the activity. For information call Sharon on 01752 698656.

ROYAL BRITISH LEGION 19:00-21:00 Ivybridge Constitutional Club. FFI: contact Dermot Roberts on 01752 691645.

IVYBRIDGE THEATRE COMPANY 19:30-22:00 Chapel Place Community Centre, off Fore Street. FFI: 01752 893308 / howard-davis@live.co.uk

SONGBIRDS Women's singing circle at Lakesland 19:00-20:30. 1st & 3rd Weds. FREE taster, then £10. Book at - tothewoodsforestschoo.com

THURSDAY

IVYBRIDGE CARING VOLUNTEERS 09:30-12:00 The Watermark. Drop in for a chat about donating a couple of hours of your time for elderly people.

RAMBLERS WELLBEING WALKS 10:00 Every Thursday. Meet Ivybridge Leisure Centre. FFI: contact Lisa Alford - 07582 350349 / lisa.alford@activedevon.org.

COMMUNITY CAFE 10:00-15:00 The Bridge, Leonards Road. ivybridge@salvationarmy.org.uk.

MASS 10:00 St Austin's Priory.

BOUNCE & RHYME 10:30-11:00 Ivybridge Library. For children under 3 and their carers. No need to book. Suggested donation 50p per child.

SHARE SHED Borrow hundreds of useful items at a low cost. Glanvilles Mill car park, Ivybridge, 10am-12noon. FFI: www.shareshed.org.uk, call 07516 908237 or info@shareshed.org.uk.

BOOK GROUP 11:00 Every 2nd Thursday at Ivybridge Library. Pop into the library to find out more.

SONGS & STORIES 13:15-14:45 Term time for babies & children under school age. Ivybridge Methodist Church. Contribution of £2 requested.

SO SOCIAL IVYBRIDGE - PEER SUPPORT 14:00-15:00 The Bridge, Leonards Road. Free peer support group for people living with long-term medical conditions and disabilities. FFI: Facebook: search So Social Ivybridge or call 07934 999404.

KNIT AND NATTER 14:30-16:30 Ivybridge Library.

1st IVYBRIDGE RAINBOWS 16:10-17:20 St John's Church Hall. FFI: contact Jackie: firstivyrainbows@live.co.uk.

2nd IVYBRIDGE RAINBOWS 17:10-18:20 St John's Church Hall. FFI: firstivyrainbows@live.co.uk.

ERME VALLEY HARRIERS - JUNIOR TRAINING 18:00-19:15 Ivybridge Community College. For those aged 8+ of all abilities. FFI: 01752 893573 www.ernevalleyharriers.co.uk.

SO SOCIAL STITCHES The Imperial 18:00-21:00. FFI: sosocialivybridge@gmail.com.

VOLUNTEER POLICE CADETS 18:30 Ivybridge Community College (term time only). £3/week. dc.police.uk/cadets/joiningcadets@dc.police.uk.

SCOUTS 19:00-21:00 Scout Hut, Victoria Park, Blachford Road. Contact ivybridgescouts@gmail.com or 1stivygsi@gmail.com.

ARMY CADETS 19:00 Cadet Centre, Filham Park. FFI: contact Abigail Boyne on1399boyn@armymail.mod.uk or visit armycadets.com/

TABLE TENNIS 19:15-20:45 Peverell Hall, Ivybridge Community College. FFI: contact Alan on 07712 896185 or ivybridgegett@aol.com.

CROOKED TEMPO SAMBA BAND 19:30-21:30 Ermington Church. Every Thursday. Session fees are £3 per person/per week.

FRIDAY

LITTLE FISHIES PARENTS AND TODDLERS GROUP 09:30-11:00 The Bridge, Leonards Road. Term time only. £2/session/family.

BUSY BEES 10-12:00 Parent & child group (18m-5yrs) £12/session. Term-time. Booking: www.totthewoodsforestschoo.com.

SHARE SHED Borrow hundreds of useful items at a low cost. Old School Community Centre, Totnes Road, South Brent, 10am-12noon.

IVY CRAFTERS 10:00-12:00 Endsleigh Garden Centre. £10 per session, all materials included. Call 07706 317825 or theivycrafters@gmail.com.

CATHOLIC WOMEN'S LEAGUE 11:00 St Austin's Priory. First Friday of each month. All welcome.

COMMUNITY CAFE 11:15-15:00 The Bridge, Leonards Road. ivybridge@salvationarmy.org.uk.

ART FOR CALM 13:00-14:30 Every 2nd Friday. Ivybridge Library. Word art and doodling 'accidental' art therapy.

RAMBLERS' WELLBEING WALKS SOUTH BRENT 14:00 Every Friday. Walks start at the junction of Station Approach and Hillside. Scenic, friendly and varied walks of around 90 minutes (level 3). Then drinks and chat at the Station House.

PAGE TURNERS First Friday of the month, 2-3pm, Ivybridge Library. An hour of talking about our favourite things - books! FFI: call Ivybridge Library on 01752 893140.

WISE AND WONDERFUL 14:30-16:00 Ivybridge Methodist Church. A fellowship group open to everyone. £1 per person. Contact Val 893614, Maureen 945799, Sue 896444, Carole 894676, Christine and David 892858, Judy 894829.

ERME VALLEY HARRIERS - SENIORS TRAINING 18:00-19:00 Social run for all abilities. Contact Keith Reed - 01752 893573 / ermevalleyharriers.co.uk.

THE BRIDGE PROJECT YOUTH CAFE 18:30-22:00 The Bridge, Leonards Road. Drop-in evening. Free. 6.30-8pm for Years 6-8. 8.30-10pm for Years 9 & above (up to 18). Call Elis Norton: 07966 911560/admin@ivybridge.yfc.co.uk.

RAF AIR CADETS 19:00-21:30 Cadet Centre, Filham Park. FFI: cc.339@rafac.mod.gov.uk.

SATURDAY

IVYBRIDGE ARTISAN MARKET 09:30-13:00 The Watermark. First Saturday of the month. ivybridgeartisanmarket.co.uk.

COFFEE MORNING 10-12:00 South Brent Methodist Church School Room. First Saturday of

month. All welcome

THE STORE - IVYBRIDGE'S REPAIR CAFE + SHARE SHOP 10:00 Makers Mews, Harford Road, Ivybridge. Final Saturday of each month.

LEGO CLUB 10:30-12:30 Ivybridge Library. All ages welcome. No need to book. Suggested donation 50p per child.

SO SOCIAL - COFFEE MORNING 11:00-12:00 The Bridge Cafe. Everyone welcome. Facebook: So Social Ivybridge or phone 07934 999404.

THE ART PLAYGROUND 11:00-14:00 The Clay Factory. First Saturday of the month. Community art making for all ages, adults and children. Free. jamilia@jamilahanan.com.

COMPASSIONATE CAFÉS Bereavement support café, listening, friendship and cake! Open to all. 10:00-12:00, 2nd & 4th Saturday of month, Chapel Place, Ivybridge. 10:00-11:30 3rd & 4th Saturday of month, The Old School Community Centre, South Brent.

SUNDAY

FAMILY WORSHIP 10:30 Ivybridge Methodist Church. Lively family worship with activities for all ages of young people. Contact Pam Montgomery imcbookings@gmail.com or 01752 894083.

SALVATION ARMY SUNDAY WORSHIP 10:30-10:30 The Bridge, Leonards Road. FFI: contact ivybridge@salvationarmy.org.uk.

MORNING WORSHIP 10:30 St John The Evangelist. One hour service followed by refreshments. Contact Paul Hinkley - vicar. sdmc@gmail.com/01752 895227.

SERVICE 10:30 Ivybridge Baptist Church. Junior church and crèche during the message. Tea/coffee after the service. Pastor John Williams - email iebo@hotmail.co.uk/ 07853 620648.

MASS 11:00 St Austin's Priory. With children's liturgy. Tea/coffee afterwards.

IVYBRIDGE WALKING CLUB 10:00-16:00. Fortnightly walks in and around the South Hams and beyond. FFI: ivybridgewalkingclub.com.

IVYBRIDGE BLOOMERS 14:00-16:00 The Snail Garden, Harford Road. Phone Shirley Weeks on 07934 999404.



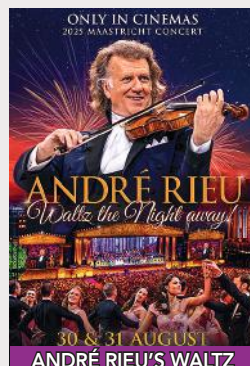
SMURFS [CERT TBC]
- 9-21 AUGUST



FOUR LETTERS OF LOVE
[12A] - 12-21 AUGUST



NAKED GUN [12A]
- 30 AUG-4 SEPT



ANDRÉ RIEU'S WALTZ THE NIGHT AWAY!
- 31 AUGUST 2PM



WELLBEING FAIR
- 13 SEPT

Bookings for stalls being
taken now



SARAH McQUAID
- 20 SEPT



IVYBRIDGE COMEDY CLUB - 26 SEPT



THE PANTALOONS PRESENT HAMLET
- 3 OCT



AUTUMN CONCERT
- 4 OCT



KATHRYN ROBERTS AND SEAN LAKEMAN - 11 OCT



CEILIDH NIGHT: CELEBRATING 50 YEARS OF THE CITY OF PLYMOUTH PIPE BAND
- 18 OCT



A NIGHT OF THE STARS WITH SANDY SMITH - 25 OCT

The Watermark
ERME COURT - LEONARDS ROAD - IVYBRIDGE

BOX OFFICE

01752 892 220

ivybridgewatermark.co.uk

LIVE EVENTS / CINEMA / COFFEE SHOP / INFO CENTRE / WEDDINGS / CONFERENCES / PRIVATE PARTIES