

ANATOMY & PHYSIOLOGY

MODELS • CHARTS • LAB KITS • TEXTBOOKS • DVDS • CD-ROMS

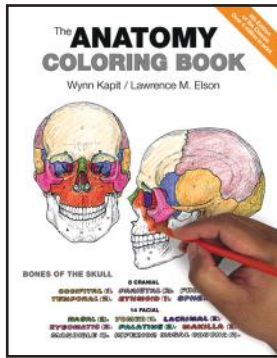


102 Hwy. 81 North • Calhoun, KY 42327 • 270-273-5000 • www.NimcoInc.com • © Nimco, Inc.

TERMINOLOGY

THE ANATOMY COLORING BOOK - 4TH EDITION

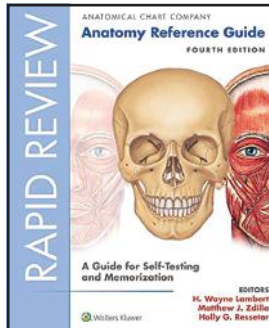
- 162 detailed illustrations
- Organized by body systems
- A color-key system links terminology to illustrations • Reinforcing learning and impressing visual details of anatomy
- New coverage of the lymphoid-immune system
- 29 new plates
- 384 page Softcover
- College



ITEM # AW-0805350861-B\$39.95

RAPID REVIEW: ANATOMY REFERENCE GUIDE

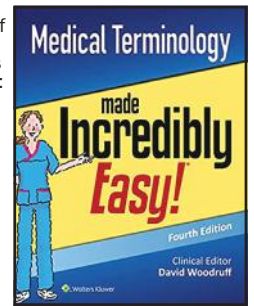
- A student favorite for its 31 sections of useful content and its unique self-testing feature. Illustrations paired with acetate overlays allow for easy review and quizzing.
- For use in high school, college, and healthcare careers & patient education
- Location of organ or system highlighted on a human figure
- Roots of key words and their meanings
- Spiral Bound • 100 pgs



ITEM # 11033\$99.95

MEDICAL TERMINOLOGY MADE INCREDIBLY EASY

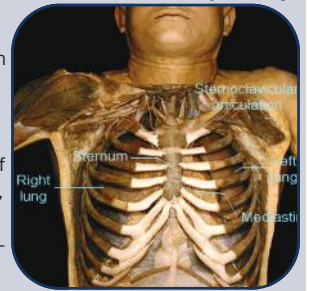
- Explains the meanings, roots, and pronunciation of terms as used in everyday practice, including: Names for all major body systems: skeletal, muscular, integumentary, cardiovascular, respiratory, gastrointestinal, urinary, reproductive, neurologic, endocrine, blood and lymphatic, and sensory systems
- Offers a strong anatomy and physiology overview backed by numerous images, including a large image of each organ system
- 296 pg. Softcover



ITEM # 11032\$99.95

HUMAN ANATOMY LAB (DVD)

- This definitive reference on human anatomy features 400 real human dissections, showcasing thousands of structures—arteries, veins, muscles, nerves, and bones—with no cartoons or computer renderings



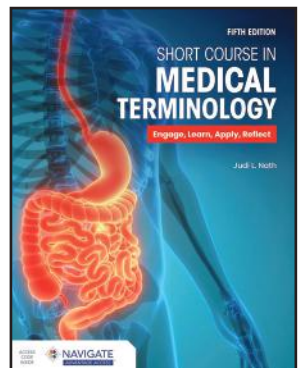
USE ON ANY 3D TV OR PROJECTOR

- Its 3D images reveal true anatomical relationships, surpassing plastic models or simulations
- The Human Anatomy Lab includes lecture, tutorial, and quiz modes, enabling efficient teaching, independent study, and realistic Lab Practical exams with real specimen visuals
- An electronic index ensures quick access, making it an essential tool for educators, students, and professionals.

DVD - ITEM # 199200-HAL--\$495.00

A SHORT COURSE IN MEDICAL TERMINOLOGY

- **Fifth Edition**
- Structure and function sections use full-color illustrations to help you learn basic anatomy and physiology
- Case studies connect chapter material to clinical settings through real-world applications of medical terms



- In-text learning aids include learning outcomes, study tables that summarize terms, abbreviations tables that list common abbreviations and their meanings, and end-of-chapter exercises that help you master key terminology and word parts
- Includes student practice activities, study aids, and assessments
- 442 Pages

ITEM #154561-Book/CD-ROM-\$99.95



UNDERSTANDING ANATOMY & PHYSIOLOGY 15 DVD SERIES

- 3-D animation and enhanced computer graphics
- Journey throughout the human body's many complex systems and functions
- Starts with the basic building blocks of life called cells to the miracle of life through reproduction
- This program will leave no area of the human body uncovered
- Insights of Dr. David Gerstman who gives detailed analysis and explanation of each system
- Helps students understand how each system works individually
- Additional description on our web site at: www.nimcoinc.com
- Approximately 30 min. each

DVD - ITEM # NIM-1200-16-30D\$1499.95

ALL TITLES SOLD AT \$109.95 EACH

| ALL TITLES SOLD AT \$109.95 EACH | DVD ITEM # |
|------------------------------------|-----------------|
| 1. THE CELL | NIM-1200-16-DVD |
| 2. THE SKIN | NIM-1200-17-DVD |
| 3. THE SKELETAL SYSTEM | NIM-1200-18-DVD |
| 4. THE MUSCULAR SYSTEM | NIM-1200-19-DVD |
| 5. THE NERVOUS SYSTEM | NIM-1200-20-DVD |
| 6. THE SPECIAL SENSES | NIM-1200-21-DVD |
| 7. THE CARDIOVASCULAR SYSTEM | NIM-1200-22-DVD |
| 8. THE RESPIRATORY SYSTEM | NIM-1200-23-DVD |
| 9. THE DIGESTIVE SYSTEM | NIM-1200-24-DVD |
| 10. THE URINARY SYSTEM | NIM-1200-25-DVD |
| 11. THE ENDOCRINE SYSTEM | NIM-1200-26-DVD |
| 12. THE LYMPHATIC & IMMUNE SYSTEMS | NIM-1200-27-DVD |
| 13. THE REPRODUCTIVE SYSTEM | NIM-1200-28-DVD |
| 14. REPRODUCTION IN HUMANS | NIM-1200-29-DVD |
| 15. METABOLISM | NIM-1200-30-DVD |

ORDER ONLINE OR BY PHONE



www.NIMCOinc.com



270-273-5000

SKELETON MODELS

“SAM”™ THE SUPER SKELETON

- Demonstrate all movements at the neck joints
- Flexible joint ligaments and an intervertebral disc prolapse (L3-L4)
- The combination of muscle origins and attachments
- Numbered bones
- European design and craftsmanship
- Durable, unbreakable plastic construction
- Full height (5'6"/170 cm)
- Over 600 hand-numbered and identified details
- Improved flexibly molded rubber ligaments
- Flexible spine
- 3-part articulated skulls
- Individually spaced and molded teeth
- Removable limbs for in-depth study
- Fully articulated hands and feet
- Rolling stand with dust cover
- Full 3 Year Warranty
- 5-arm roller base

HANGING ROLLER STAND

ITEM # ATB-A13/1-D ----- \$1675.00

MOUNTED ROLLER STAND

ITEM # ATB-A13-D----- \$1575.00



4-STAGE VERTEBRAE MODELS

- Set of four, full size two-piece • Normal vertebrae model
- “Bulging” herniated disc vertebrae model
- Bone and disc degeneration vertebrae model
- Advanced osteoporosis with marked bone compression & bone spurs vertebrae model
- Model size: 3-1/2" x 2-3/4" x 3" • Card size: 6-1/2" x 5-1/4"

ITEM # GPIA-176-D ----- \$239.95

ORDER ONLINE OR
BY PHONE



www.NIMCOinc.com



270-273-5000

SKELETON MODELS



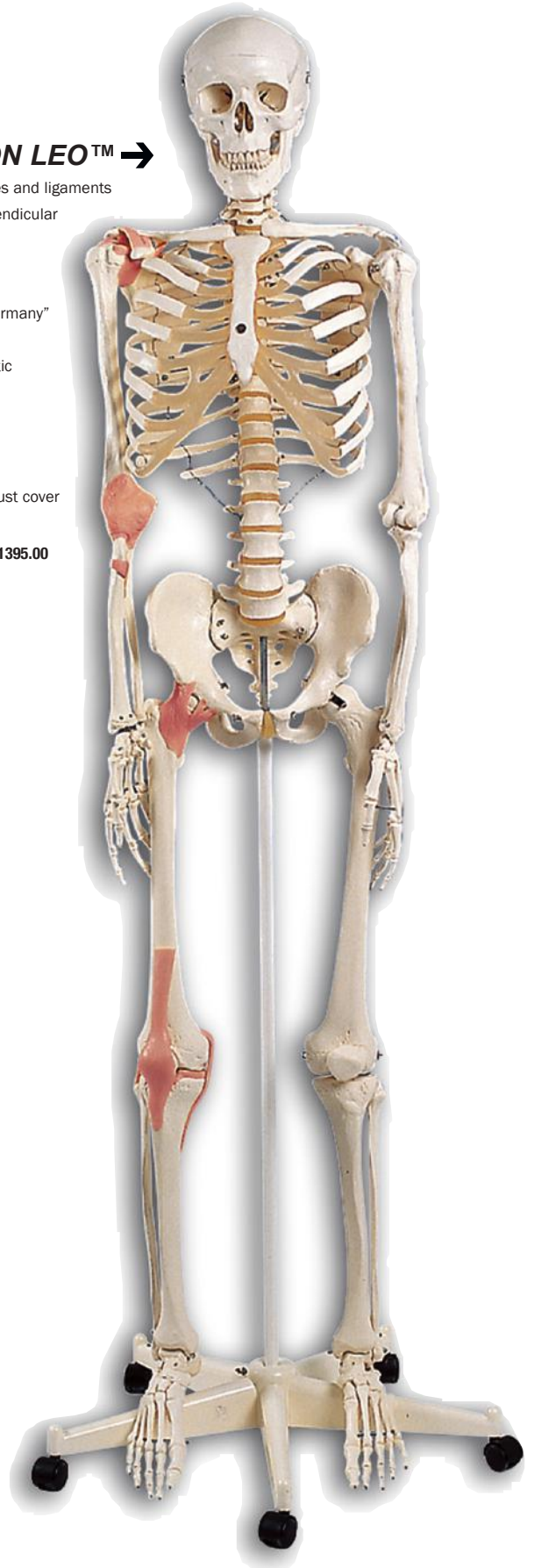
CLASSIC LIFE-SIZE SKELETON ↑

- On a pelvic mounted 4 foot roller stand • Stand and skeleton dust cover included
 - Excellent price-performance ratio • 3-year warranty • First-class natural cast "Made in Germany" • Manual assembly • Made of durable, washable, unbreakable plastic
 - Almost realistic human skeleton weight • Approx. 200 bones • Life-size
 - 3-part mounted skull • Individually inserted teeth • Limbs are quick and easy to remove
- ITEM # ATB-A10-D ----- \$725.00

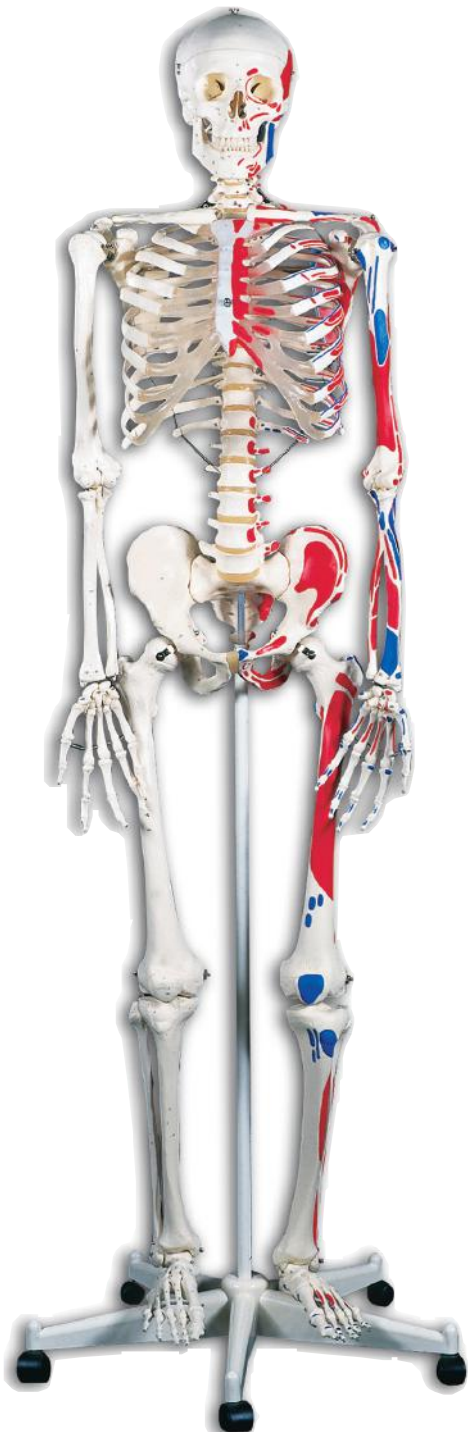
CLASSIC SKELETON LEO™ →

- Structural interaction between bones and ligaments
- Elastic ligaments on the major appendicular joints are mounted on the right side
- Excellent price-performance ratio
- 3 year warranty
- First-class natural cast "Made in Germany"
- Manual final assembly
- Made of durable, unbreakable plastic
- Realistic weight of bones
- Life-size • 3 part mounted skull
- Individually inserted teeth
- Limbs are removable
- 5-foot roller stand with brake and dust cover
- Size: 5' 7" tall

ITEM # ATB-A12-D ----- \$1395.00



SKELETON MODELS



MAX™ THE MUSCLE SKELETON

- Structural interaction between bones & muscles
- Depicts over 600 structures of medical/anatomical significance
- Muscle origins (red) • Insertions (blue) on the left side
- Hand numbered bones • Fissures and foramina on the right sides

WITHOUT 5 FOOT ROLLER STAND

ITEM # ATB-A11-D ----- \$1295.00

WITH HANGING STAND

ITEM # ATB-A11/1-D ----- \$1395.00

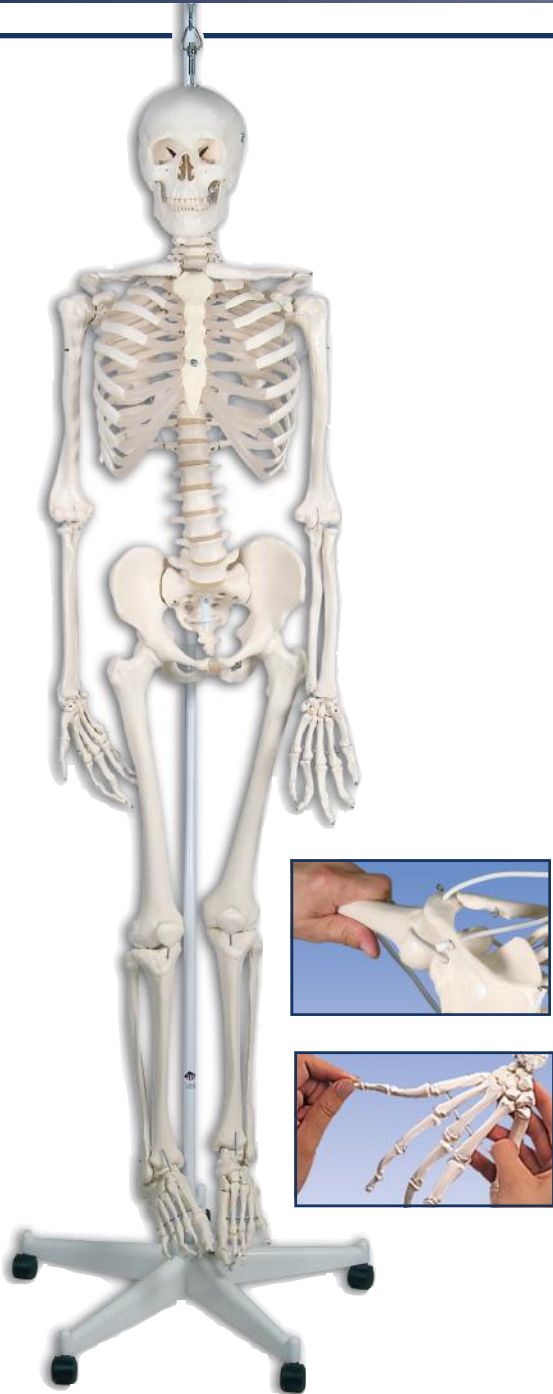
FRED THE FLEXIBLE SKELETON

- Can bend and flex to mimic any natural human movement
- Position to demonstrate correct and incorrect posture or various pathological conditions
- Skull movements at the neck joints can be demonstrated
- Spinal nerve exits and vertebral arteries are shown as is a dorso-lateral disc prolapse between the 3rd and 4th lumbar vertebrae
- Includes 5' roller stand and dust cover

ITEM # ATB-A15-D ----- \$1095.00



SKELETON MODELS



FUNCTIONAL PHYSIOLOGICAL SKELETON FRANK™

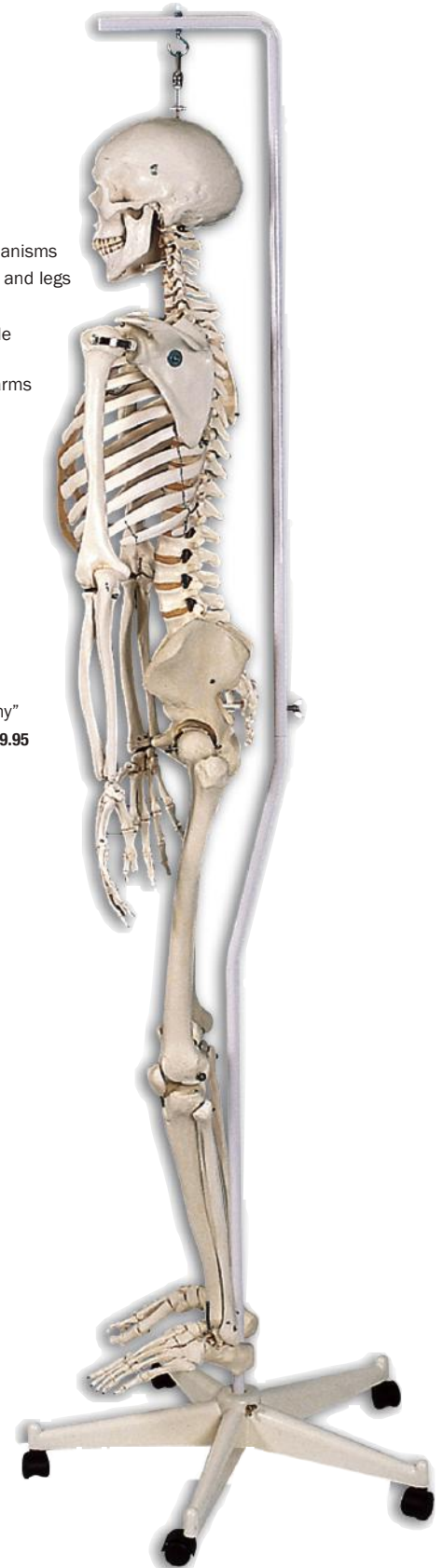
- Unique flexible assembly of all joints
- Complex motions of the upper extremity
- Upper & lower limbs are quick and easy to remove
- Inward & outward rotation of radial and ulnar bones
- 3-part assembled skull • Life size
- Flexible Spine • Individually placed teeth
- Extend & flex the knee joint
- Realistic weight of approx. 200 bones
- Made of durable, unbreakable plastic
- Supplied with stand and dust cover

ITEM # 85056 ----- \$2195.00

PHYSIOLOGICAL SKELETON PHIL™

- Near lifelike realization of the joint mechanisms
- Inward and outward rotation of the arms and legs
- Extend & flex the knee and elbow joints
- Foot bones are mounted flexibly to enable movability
- Shoulder blades rotate along when the arms are raised
- Made of durable, unbreakable plastic
- Realistic weight of bones
- Flexible spine
- Limbs are quick and easy to remove
- 3 year warranty
- 3 part mounted skull
- Individually inserted teeth
- Manual final assembly
- Stand with brake & dust cover
- Life-size
- First-class natural cast "Made in Germany"

ITEM # ATB-A15/3-D ----- \$1699.95



MUSCULATURE MODELS



← 1/2 SIZE COMPLETE DUAL-SEX MUSCULAR FIGURE, 33-PART

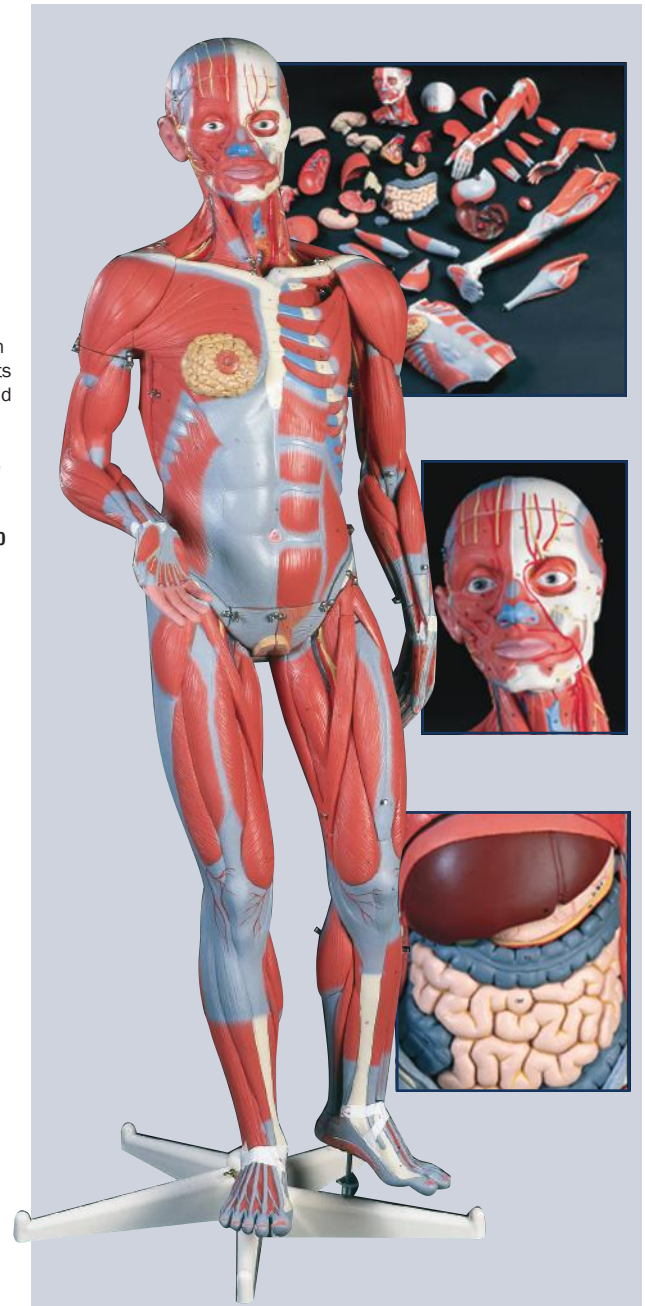
- Demonstrations of human musculature and internal organs
- 33 removable and/or dissectible parts
- Complete with stand
- Painted by hand in realistic colors
- Multilingual key card
- 5 arm/shoulder muscles
 - 8 leg/hip muscles
- 2-part brain • 2 lungs
- 2-part heart • 2-part intestine system
- 2-part female and male genital inserts
- Detachable breast/belly covering and rms for detailed study
- Almost 400 hand-numbered and identified structures identified in the manual
- 84 cm high version

ITEM # ATB-B55-D - - - - \$4950.00

1/2 COMPLETE FEMALE MUSCULAR FIGURE, 21-PART (NOT SHOWN)

- Offering the same exceptional value as the dual sex version above, this version is delivered without internal organs, brain, and male genitalia
- 84 cm high version

ITEM # ATB-B56-D - - - \$4650.00



3/4 SIZE DELUXE DUAL SEX MUSCULAR FIGURE, 45-PART ↑

- 3-part removable brain
- Look beneath the liver to reveal the gallbladder and bile duct
- Peer inside the appendix, stomach, lungs, heart or kidney
- Remove and view the details of 13 different muscles of the arms and legs
- Interchangeable genital inserts, a female mammary gland as well
- 5 arm shoulder muscles • 8 leg/hip muscles
- 5-part head with brain • 2-part lungs • 2-part heart
- 2-part stomach • 2-part intestine system
- 2-part female and 4-part male genital inserts
- Hand-painted in realistic colors
- Mounted on a convenient roller base
- Standing over 4 1/2 feet tall, 3/4 life-size

ITEM # ATB-B50-D - - - - - \$11095.00



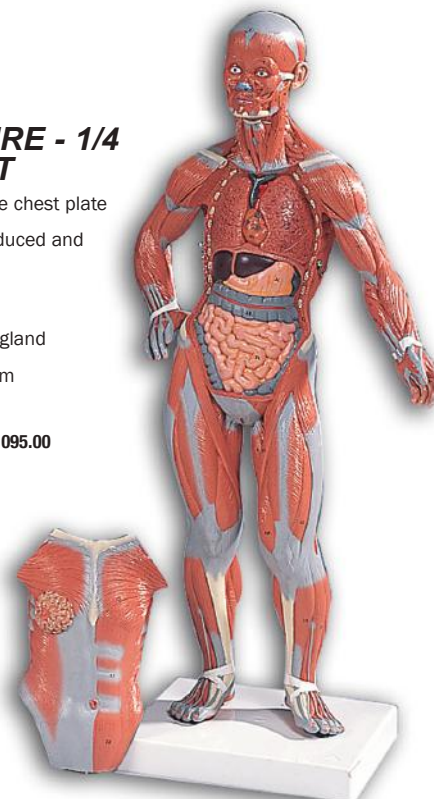
MUSCULATURE MODELS



MUSCULAR FIGURE - 1/4 LIFE-SIZE, 2-PART

- Desk-top version • Removable chest plate
- Muscles are accurately reproduced and detailed in life-like colors
- Reveals internal organs
- Contains a female mammary gland
- Dimensions: 57" x 25" x 18 cm
- Weight 1.6 kg

ITEM # ATB-B59-D ----- \$1095.00

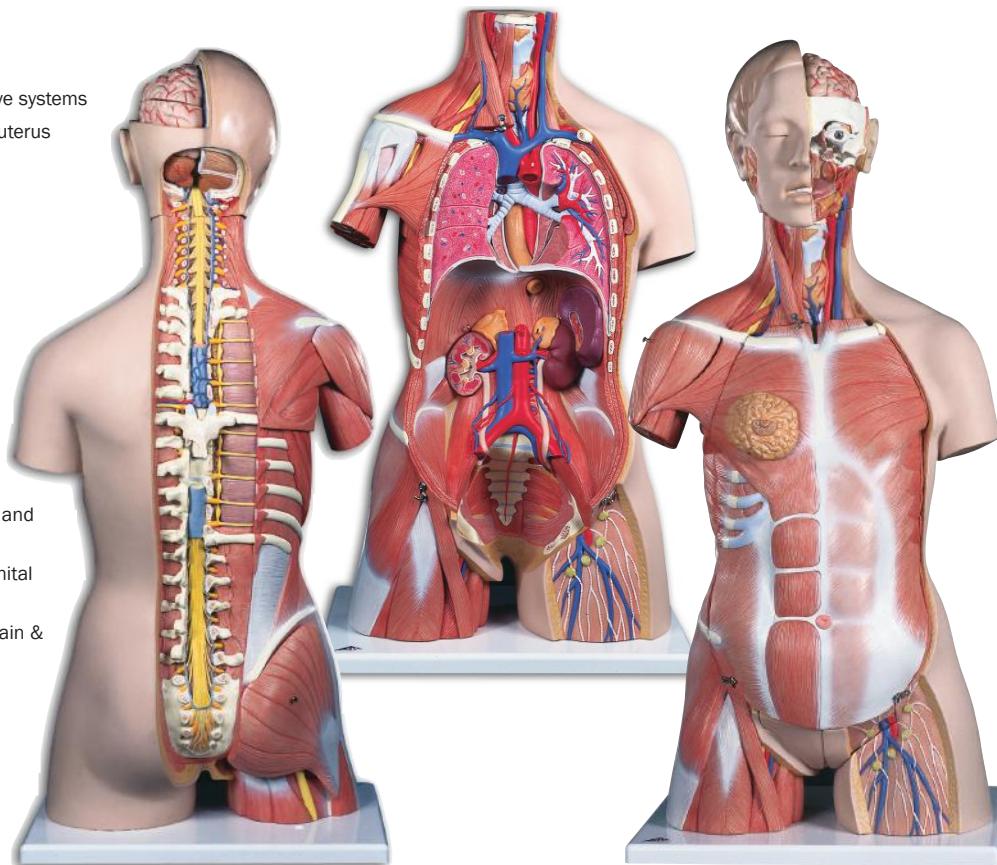


DELUXE MUSCLE TORSO

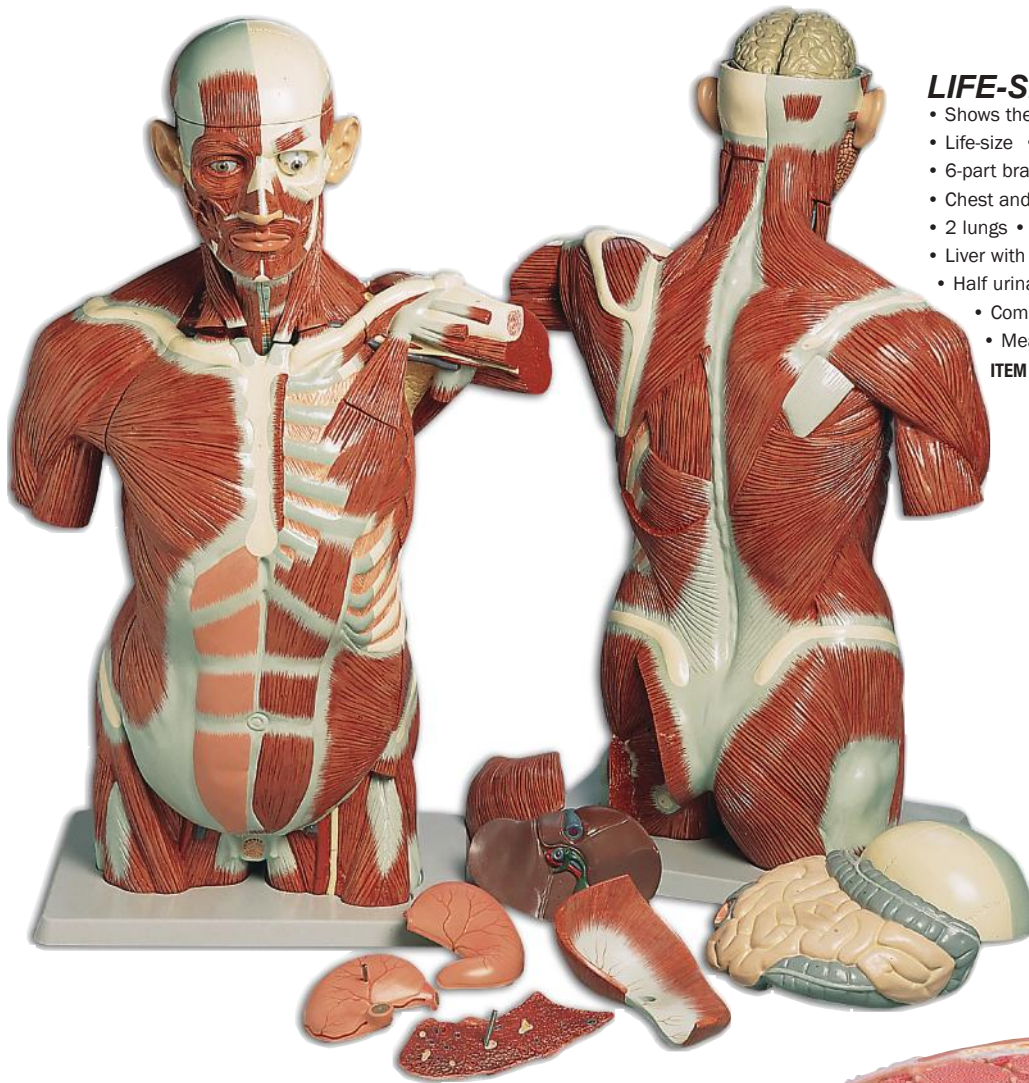
WITH 31 PARTS!

- Demonstrate the male and female reproductive systems
- Three-month fetus correctly positioned in the uterus
- 30 removable parts
- Removable heads (2-part, 3-part or 6-part)
- 2-part removable hearts
- 2 removable lungs (some showing ribs)
- Removable stomachs (1-part or 2-part)
- Removable liver with gall bladder
- Removable GI tracts (2-part or 4-part)
- Removable kidney half
- Interchangeable male, female and pregnant reproductive inserts
- Up to 75% musculature
- View the vertebrae, spinal cord, spinal nerves and vertebral arteries
- You can even dissect the male and female genital organs
- Discover the inner structures of the human brain & much more!
- 3B Torso Teaching Guide

ITEM # ATB-B40-D ----- \$3995.00



MUSCULATURE MODELS



LIFE-SIZE MUSCLE TORSO, 27-PART

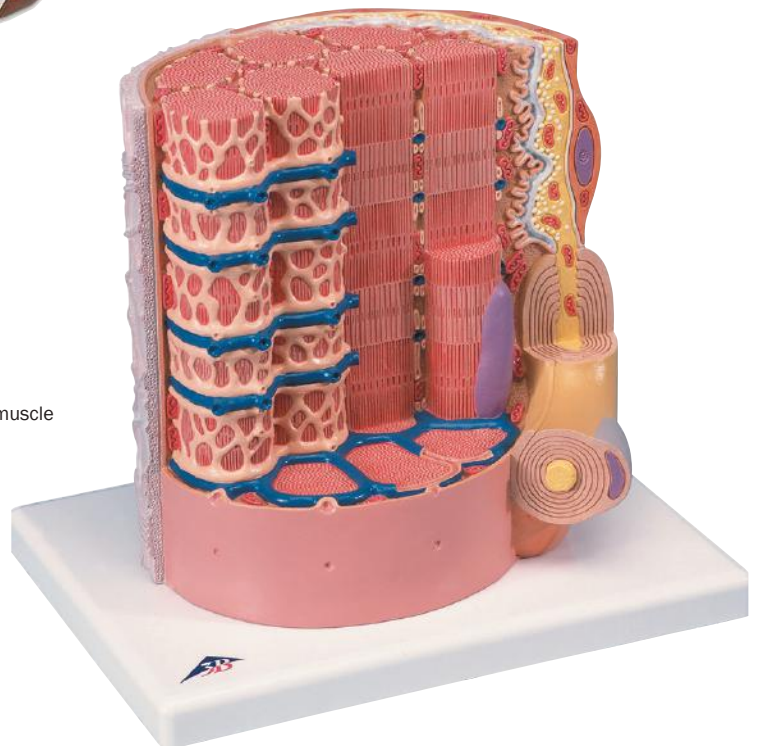
- Shows the deep and superficial muscles in great detail
- Life-size • 27 removeable parts • Skull cap
- 6-part brain • Eyeball with optic nerve
- Chest and abdominal wall • 2-part larynx
- 2 lungs • 2-part heart • Diaphragm • 2-part stomach
- Liver with gall bladder • Front half of kidney
- Half urinary bladder • 4 muscles
- Complete intestinal tract with appendix
- Measures: 95 x 60 x 35cm

ITEM # ATB-VA16-D ----- \$7695.00

MICROANATOMY™ MUSCLE FIBRE

- Illustrates a section of a skeletal muscle fibre
- Neuromuscular end plate magnified approx. 10,000 times
- The muscle fibre is the basic element of the diagonally striped skeletal muscle
- Size: 23.5" x 26' x 18.5 cm

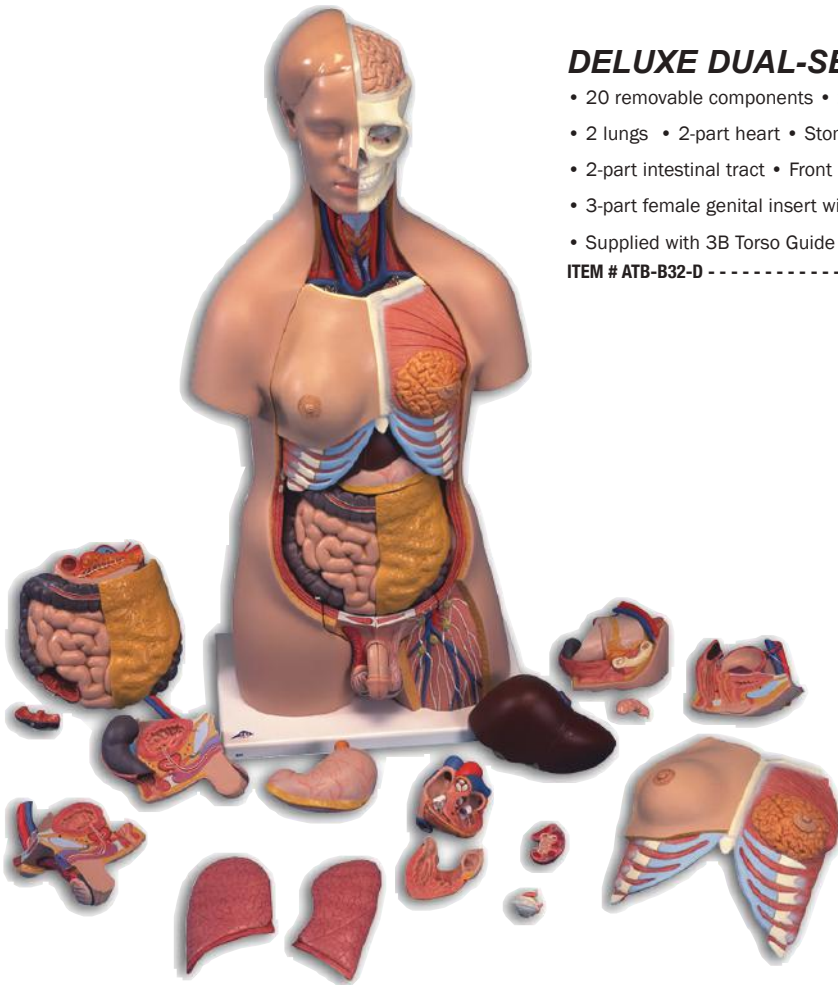
ITEM # ATB-B60-D ----- \$499.95



TORSO MODELS

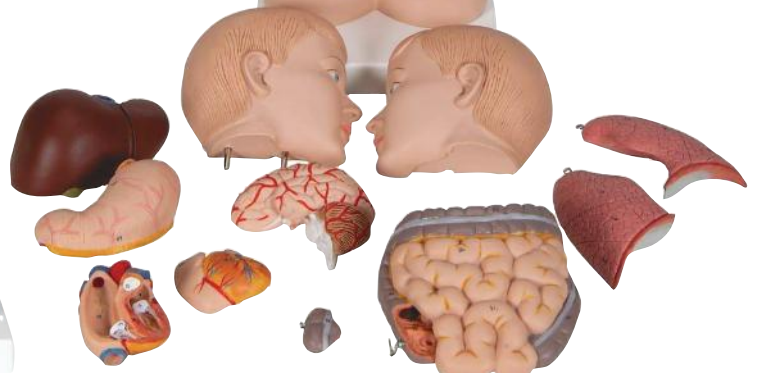
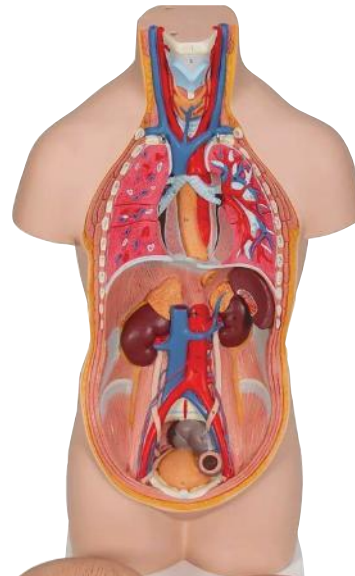
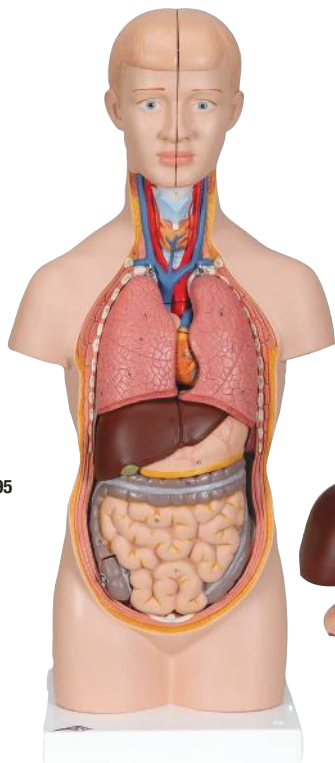
DELUXE DUAL-SEX TORSO, 20-PART

- 20 removable components • 2-part head • Female chest wall
 - 2 lungs • 2-part heart • Stomach • Liver with gall bladder
 - 2-part intestinal tract • Front half of kidney • 4-part male genital insert
 - 3-part female genital insert with embryo
 - Supplied with 3B Torso Guide • Size: 87" x 38" x 25 cm
- ITEM # ATB-B32-D -----\$1600.00



MINI TORSO, 12 PART

- 12-part torso • 1/2 life-size
 - 2-part head • Removable brain
 - 2 lungs • 2-part heart
 - Stomach • Liver with gallbladder
 - Intestines • Removable appendix flap
 - All parts are numbered • Key card
- ITEM # ATB-B22-D -----\$379.95

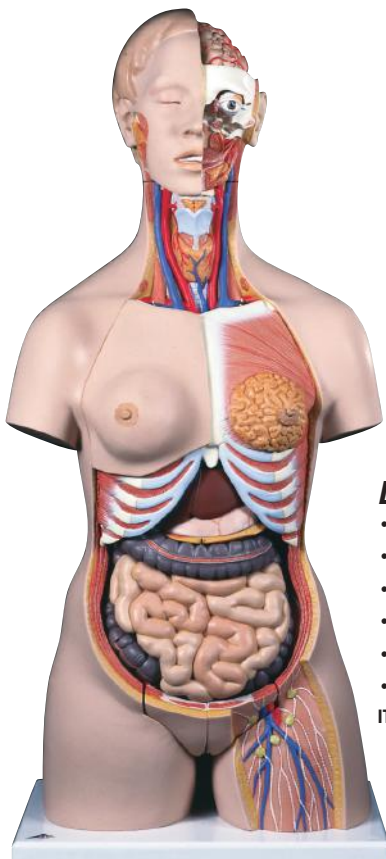


TORSO MODELS

LIFE-SIZE MALE MUSCULAR FIGURE - 37-PART

- Shows the deep and superficial musculature in great detail
- 37 removeable parts • Skull cap • 6-Part Brain • Eyeball • Both Arms
- 2-part larynx • 2 Lungs • 2-part heart • Kidney • Diaphragm • Bladder Half
- 2-part stomach • Liver with gall bladder • Intestine system • 2-part penis
- 10 muscles • Breast and abdominal wall • Dimensions: 180 x 110 x 50cm
- Weight: 23.0kg

ITEM # ATB-VA01-D-----\$12295.00



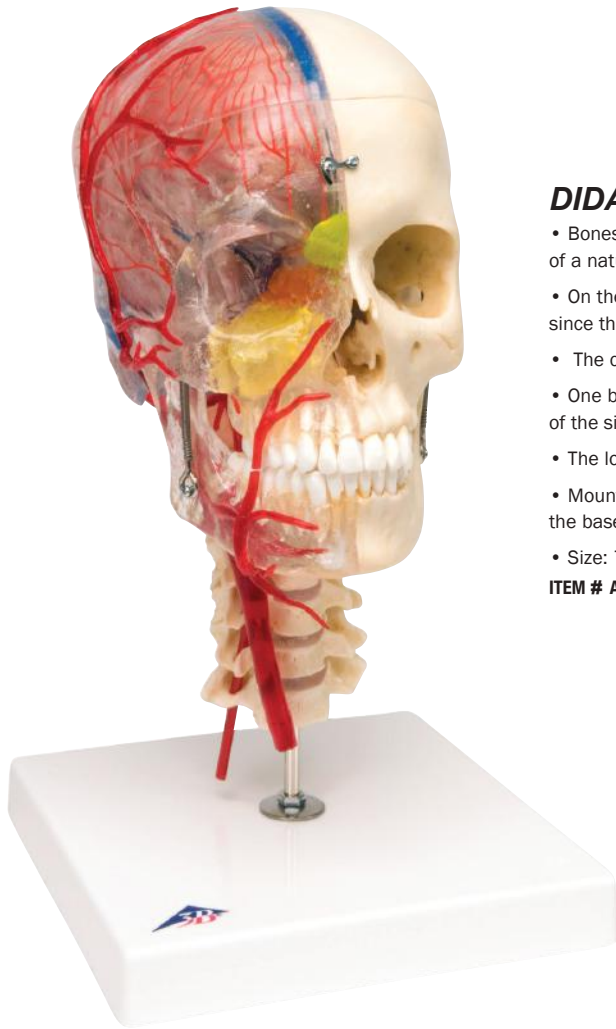
DELUXE DUAL SEX TORSO WITH OPEN BACK, 28 PART

- Removable male and female genital inserts • Open neck and back sections to study vertebrae
- Deluxe head with a 4-part brain • Intervertebral discs • Spinal cord • Spinal nerves • Vertebral arteries
- 28 removable parts • 7th thoracic vertebra • Female chest wall • 6-part head • 2 lungs • 2-part heart
- 2-part stomach • Liver with gall bladder • 4-part intestinal tract • Front half of kidney
- 3-part female genital insert with embryo • 4-part male genital insert • Supplied with 3B Torso Guide
- 87 x 38 x 25 cm

ITEM # ATB-B35-D-----\$1800.00



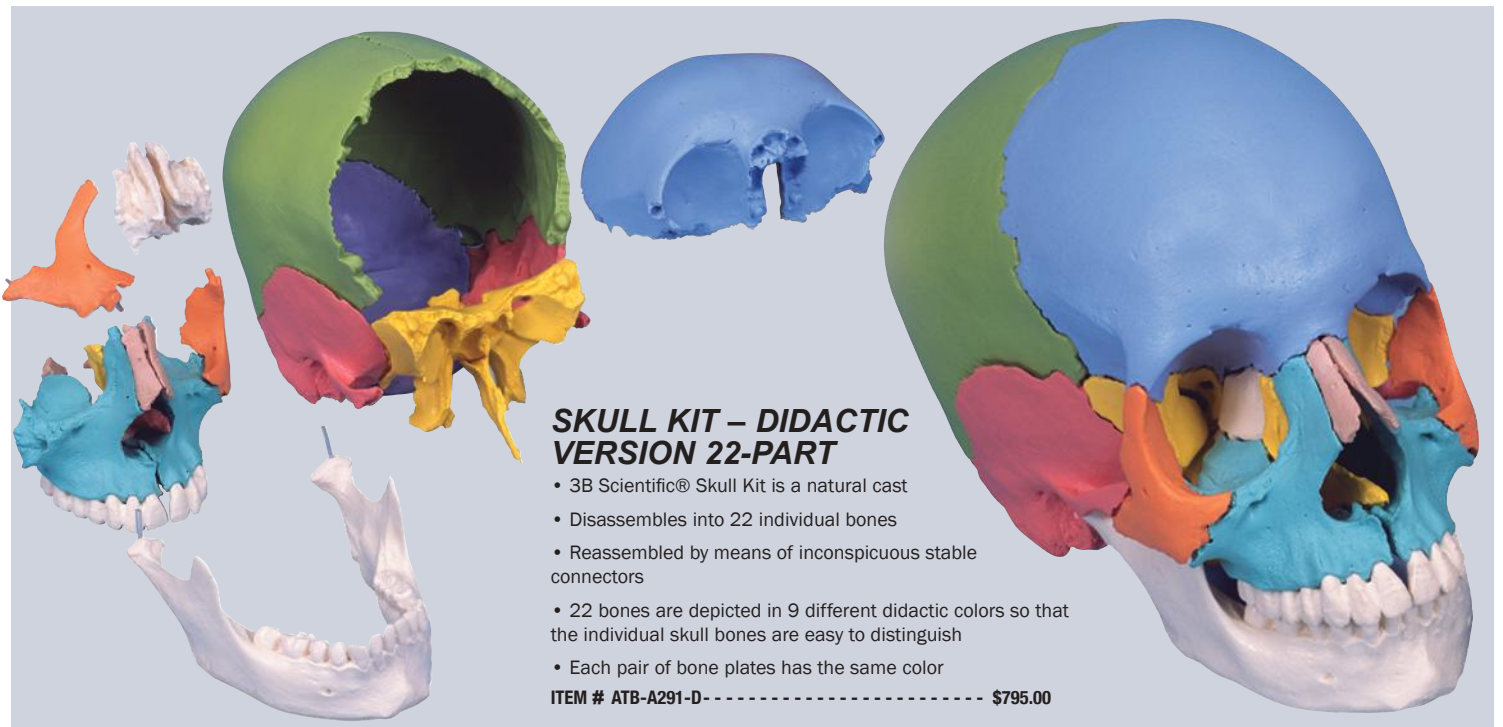
SKULL MODELS



DIDACTIC DELUXE SKULL, 7 PART

- Bones made of 3B BONElike™ look real, have an absolutely natural feel and almost exactly the weight of a natural bone
- On the right, transparent skull half the paranasal sinuses can be easily located even from the outside, since these are marked in different colors
- The cranial sinuses and the neck and face arteries are also shown in color
- One brain half, which is also visible through the skullcap, visualizes the brain position and the course of the sinuses
- The lower jaw is mounted flexibly to demonstrate the masticator movements of the human skull
- Mounted on a cervical spine and can be disassembled into both halves of the skullcap, the left half of the base of skull, the nasal septum, the complete mandible and a brain half
- Size: 7.1" x 7.1" x 13.4"

ITEM # ATB-A283-D ----- \$2395.00



SKULL KIT – DIDACTIC VERSION 22-PART

- 3B Scientific® Skull Kit is a natural cast
- Disassembles into 22 individual bones
- Reassembled by means of inconspicuous stable connectors
- 22 bones are depicted in 9 different didactic colors so that the individual skull bones are easy to distinguish
- Each pair of bone plates has the same color

ITEM # ATB-A291-D ----- \$795.00



SKULL MODELS



BONY SKULL, 6-PART

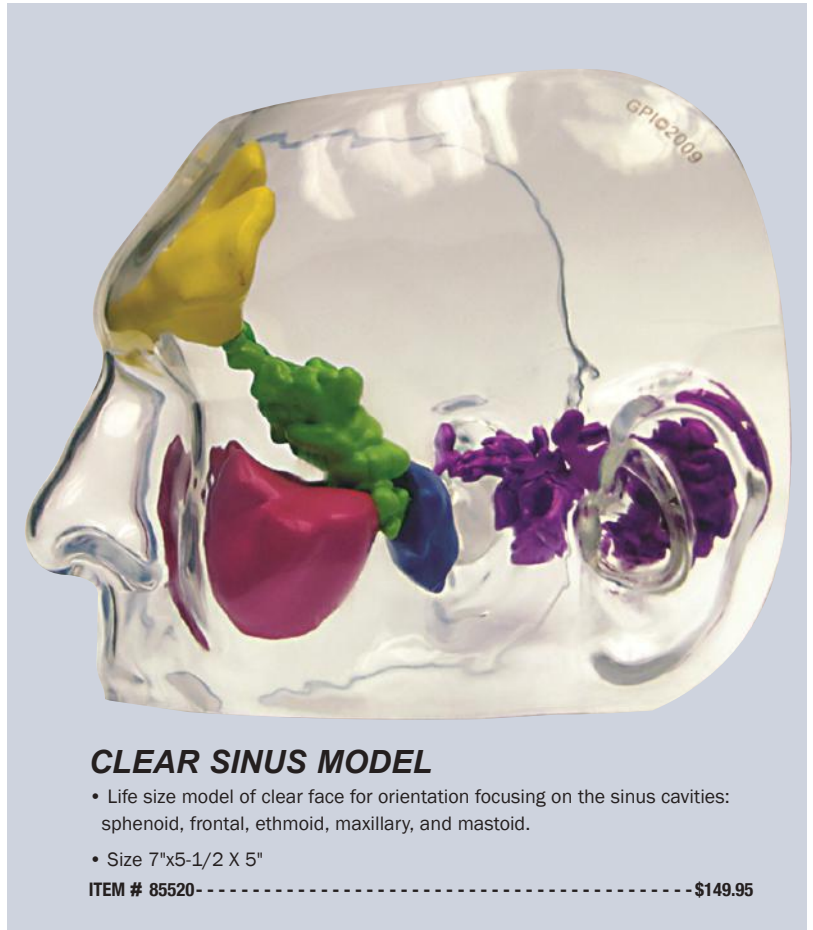
- Represents a complete midsagittally sectioned skull • Bones look real
- Natural feel • Almost exactly the weight of a natural bone
- Disassembled into both halves of the skullcap and the base of skull, the nasal septum and the complete mandible
- Demonstrates masticatory movement, the lower jaw is mounted flexibly
- To study the bony structure and the complicated anatomy of the human skull
- Natural reproduction of even finest anatomical structures
- Size: 16" x 14" x 21 cm

ITEM # ATB-A281-D ----- \$1225.00

NUMBERED CLASSIC SKULL, 3-PART

- Hand-numbered version identifying all relevant anatomical structures
- Skull structures are drawn in color • Excellent skull for students
- Comes with multilingual keycard: Latin, German, English, French

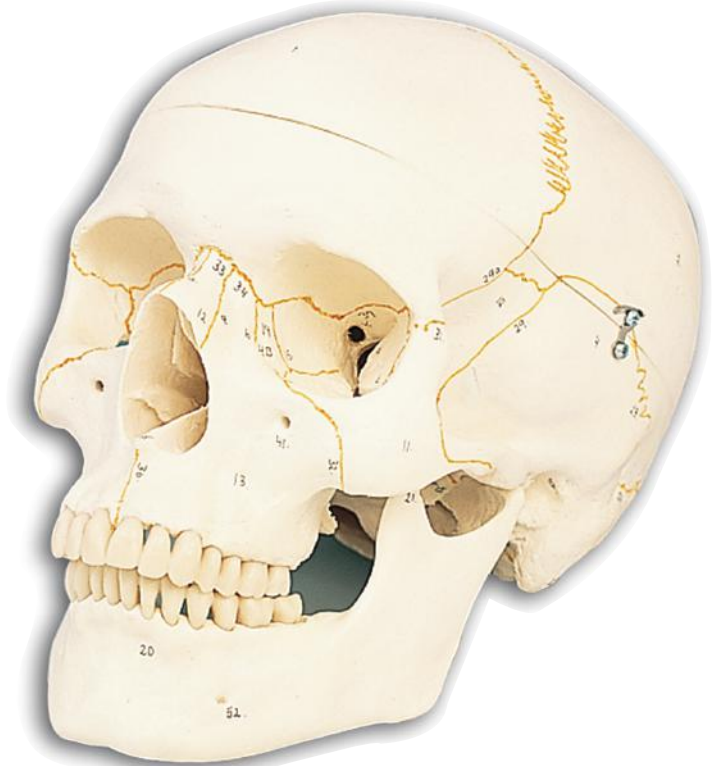
ITEM # ATB-A21-D ----- \$289.95



CLEAR SINUS MODEL

- Life size model of clear face for orientation focusing on the sinus cavities: sphenoid, frontal, ethmoid, maxillary, and mastoid.
- Size 7"x5-1/2 X 5"

ITEM # 85520 ----- \$149.95



HEAD & BRAIN MODELS

NEURO-ANATOMICAL BRAIN, 8-PART

- Disassemble 2 sides of the brain • Representation of the cerebral lobe
- Left half shows pre- & post-central region • Right half is colored
- Systematic grouping • Broca and Wernicke areas
- Heschl's gyrus • Frontal with parietal lobes • Brain nerves
- Temporal with occipital lobes • Ventricles • Half of brain stem
- Half of cerebellum • Supplied on a removable base
- Size: 14" x 14" x 17.5 cm

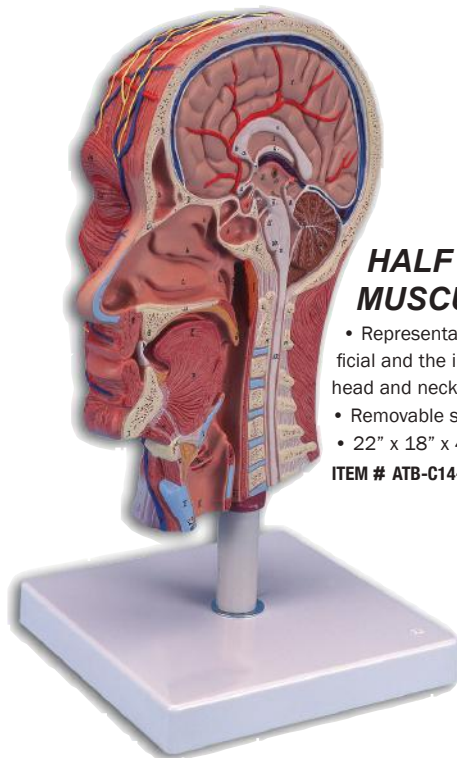
ITEM # ATB-C22-D ----- \$690.00



DELUXE BRAIN, 8-PART

- Removable stand
- Brain can be disassembled
- Frontal with parietal lobes
- Temporal with occipital lobes
- Half of brain stem
- Half of cerebellum
- Size: 14" x 16" x 14 cm

ITEM # ATB-C17-D ----- \$495.00



HALF HEAD WITH MUSCULATURE

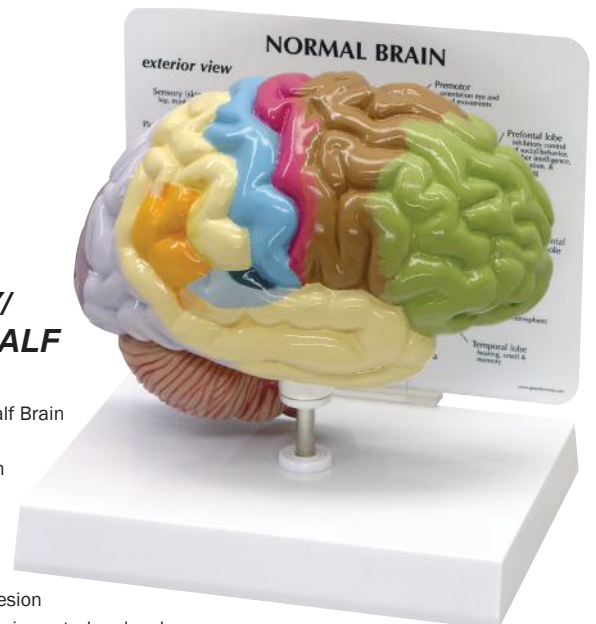
- Representation of the outer superficial and the internal structures of the head and neck
- Removable stand
- 22" x 18" x 46 cm

ITEM # ATB-C14-D ----- \$695.95

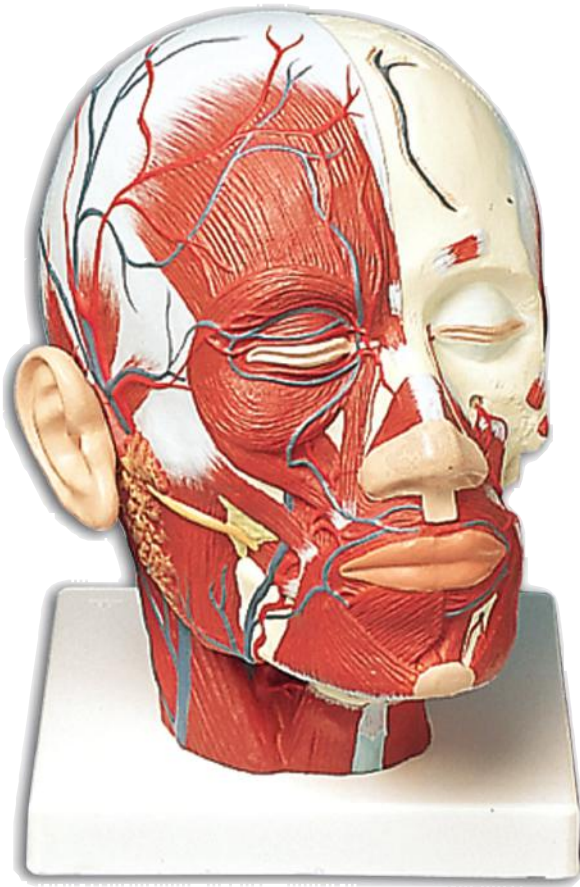
SENSORY/ MOTOR HALF BRAIN

- Normal Right Half Brain
- Optic chiasm
- Corpus callosum
- Frontal
- Occipital & Temporal lobes
- Cerebellum
- Interhalmic adhesion
- Parietal • Midbrain-central peduncle
- Pons • Olfactory bulb • Optic nerve • Medulla oblongata
- Mammillary body • Model Size: 6 1/2 " X 5" x 2 1/2 "
- Card size: 6 1/2 " X 5 1/4 "

ITEM # GPIA-295-D ----- \$129.95



BRAIN MODELS



HEAD MUSCULATURE WITH BLOOD VESSELS

- Superficial musculature of head & neck
- Lower jaw partially exposed
- Submandibular gland • Deep musculature
- Displays blood vessels • 24" x 18" x 24 cm

ITEM # ATB-VB128-D ----- \$650.00



INTRODUCTORY BRAIN, 2-PART

- Key card available in Latin, German, English, & French
- Removable stand • Medially divided brain • Size: 14" x 16" x 14 cm

ITEM # ATB-C15-D ----- \$239.95



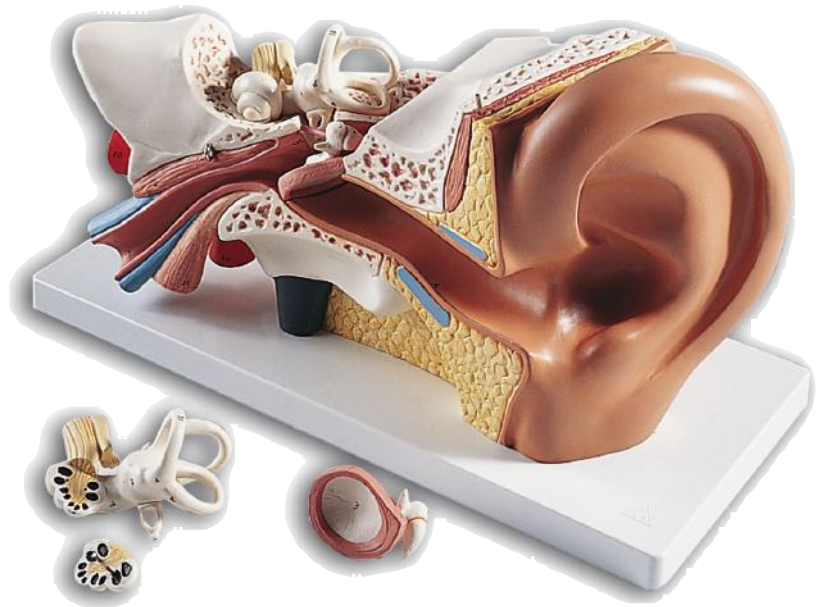
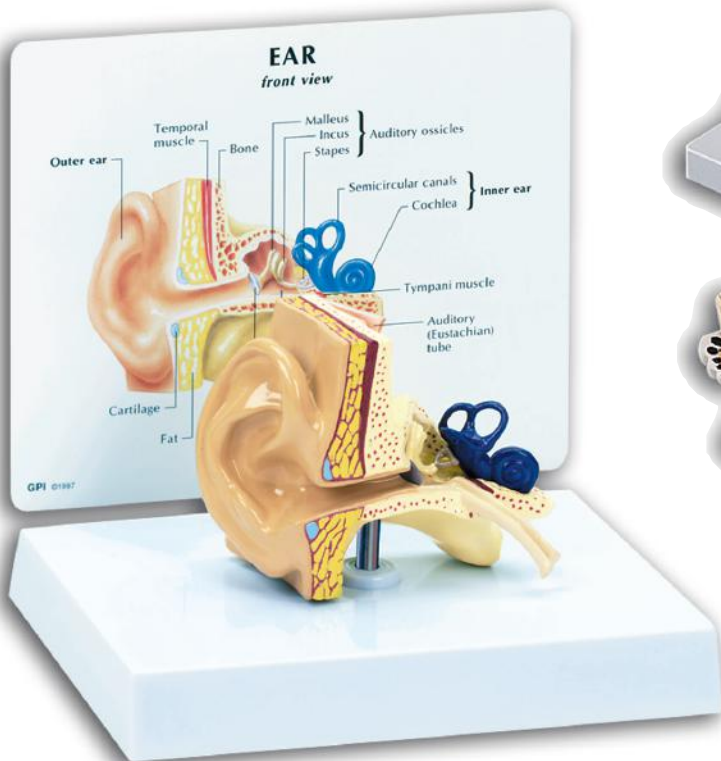
CLASSIC BRAIN, 5-PART

- An original anatomic cast of a real human brain
- Left half components are Frontal and Parietal lobe
- Temporal and Occipital lobe • Encephalic trunk
- Cerebellum • Supplied on a removable base
- 13" x 14" x 17.5 cm

ITEM # ATB-C18-D ----- \$399.95



EAR MODELS



GIANT EAR CLASSIC VERSION

- Three times life-size • 4-part representation of outer • Middle and inner ear • Removable eardrum with hammer, anvil and stirrup • 2-part labyrinth with cochlea and auditory/balance nerve • On base with multi-lingual keycard • Size: 34" x 16" x 19 cm

ITEM # ATB-E10-D ----- \$299.95

EAR MODEL

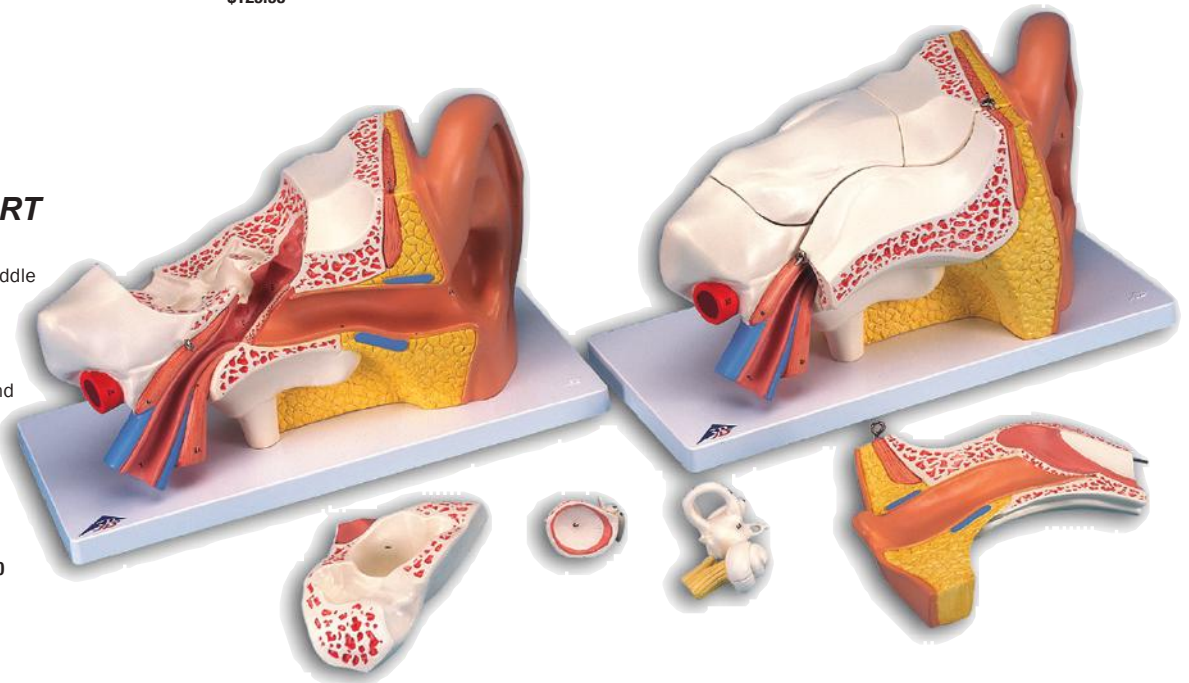
- Semi-circular canals • Cochlea of the inner ear • Auditory ossicles from the middle ear • Tympanic membrane and temporal • Tympani muscles
- Model size: 3-3/4" x 2-1/2" x 2-3/4" • Card size: 6-1/2" x 5-1/4"

ITEM # GPIA-225-D ----- \$129.95

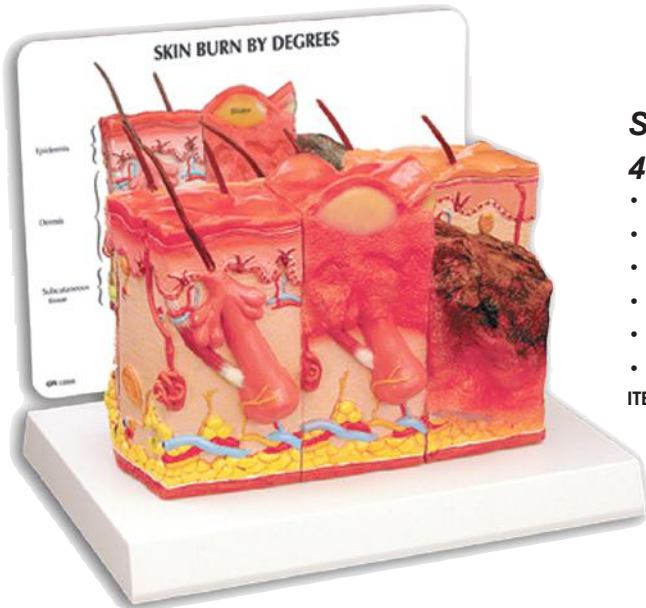
EAR MODEL, 6-PART

- 3 times life-size
- Representation of the outer, middle and inner ear
- Includes removable ear drum with hammer, anvil and stirrup
- 2-part labyrinth with cochlea and auditory/balance nerve
- Two removable bone sections to close the middle and inner ear
- Supplied on a base
- Size: 34" x 16" x 19 cm

ITEM # ATB-E11-D ----- \$325.00



SKIN MODELS



SKIN SECTION, 40 TIMES FULL-SIZE

- 3 layers of hairy & hairless skin
- Hair follicles • Sweat glands
- Receptor • Vessels
- Sebaceous glands
- Nerves
- Size: 24" x 15" x 3.5 cm

ITEM # ATB-J11-D- - - - - \$179.95



SKIN BURN & NORMAL SKIN

- 2-sided model • 75x enlargement of skin cross-section
- Shows indications of the 3 degree burns • Illustrates normal skin anatomy
- Made of durable high quality materials • Education card
- Model size: 6" x 2-1/4" x 4" • Card size: 6-1/2" x 5-1/4"
- White Base included

ITEM # GPIA-380-D- - - - - \$149.95

LAB KITS & MODELS



BLOOD CLOTTING EXPERIMENT LAB KIT

- Students examine their own blood for a closer examination of the clotting process
- Discover clotting times by studying coagulation rates and bleeding times
- Observe the formation of fibrin threads in clotting
- Study the effects of calcium on blood clotting
- Worksheets with sterile components make this a highly motivational lab activity
- Students have an opportunity to learn more about themselves
- Microscopes are needed • Complete for 50 students

ITEM # LAB-2-K- - - - - \$199.95

SIMULATED BLOOD TYPING KIT

- Simulate actual blood typing • Determine A, B, AB, or O blood types
- Using artificial bloods and sera • The clumping of red blood cells by the corresponding antibody is done by means of chemical precipitation
- Requires no blood and simulates blood typing
- Consumable Items • Complete for 60 Students

ITEM # LAB-1S-K- - - - - \$189.95



**ORDER ONLINE OR
BY PHONE**

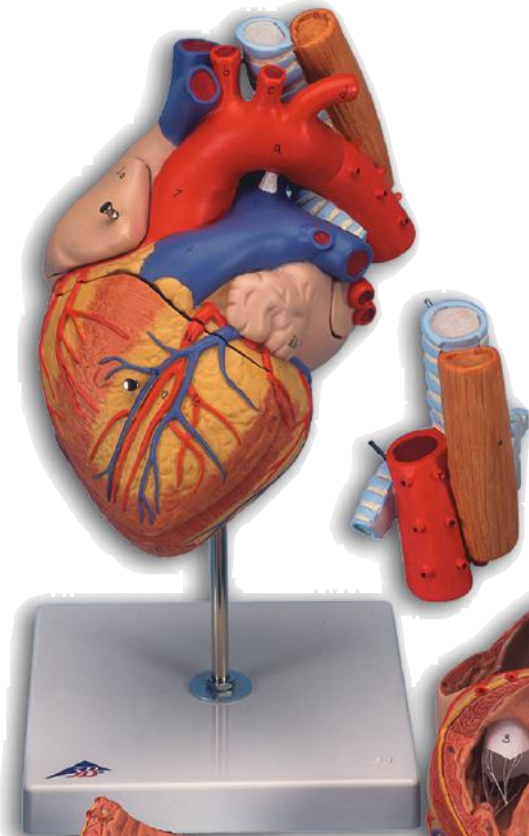


www.NIMCOinc.com



270-273-5000

HEART MODELS



HEART WITH ESOPHAGUS AND TRACHEA, 5-PART

- Easy identification of all structures • Removable atrium and front heart walls
- 2 times life-size • Upper section of the esophagus • Upper bronchi • Ascending aorta
- Hand painted • Removable stand • Size: 32" x 18" x 18 cm

ITEM # ATB-G13-D ----- \$725.00



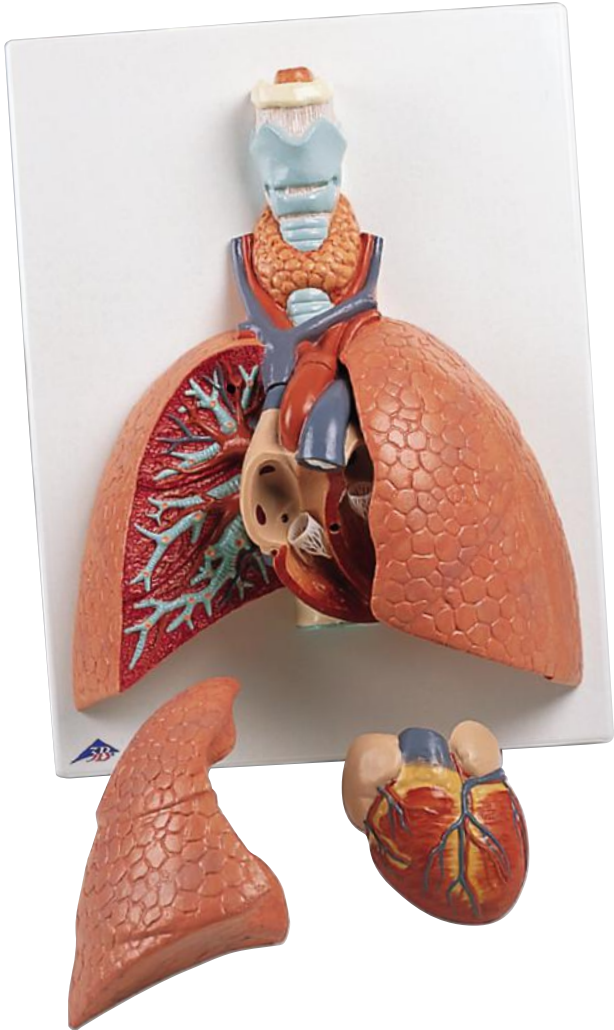
LUNG SET WITH PATHOLOGIES

- This informative Diseased Lung Model displays four states of the lung, including the effects of chronic obstructive pulmonary disease (COPD), lung cancer and asthma, as well as one "healthy" lung example
- Education card included with this anatomical model, as well as a stand
- This model is ideal for patient education, as well as advanced medical study
- 4-1/4 x 5-1/2 x 8-1/4 each

ITEM # 11025 ----- \$189.95



HEART & RESPIRATORY MODELS



LUNG MODEL WITH LARYNX, 5-PART

- Trachea with bronchial tree • 2-part heart (removable) • Oesophagus
- Vena cava • Larynx • Pulmonary artery • 2-part lung (front halves removable) • Aorta • Delivered on a baseboard • 12" x 28" x 37 cm

ITEM # ATB-VC243-D ----- \$575.00

CLASSIC HEART, 2-PART

- Shows great detail with ventricles, atriums, valves, veins and the aorta
- Heart wall can be removed • Reveals chambers and valves inside
- Removable base • Multilingual keycard
- Size: 19" x 12" x 12 cm

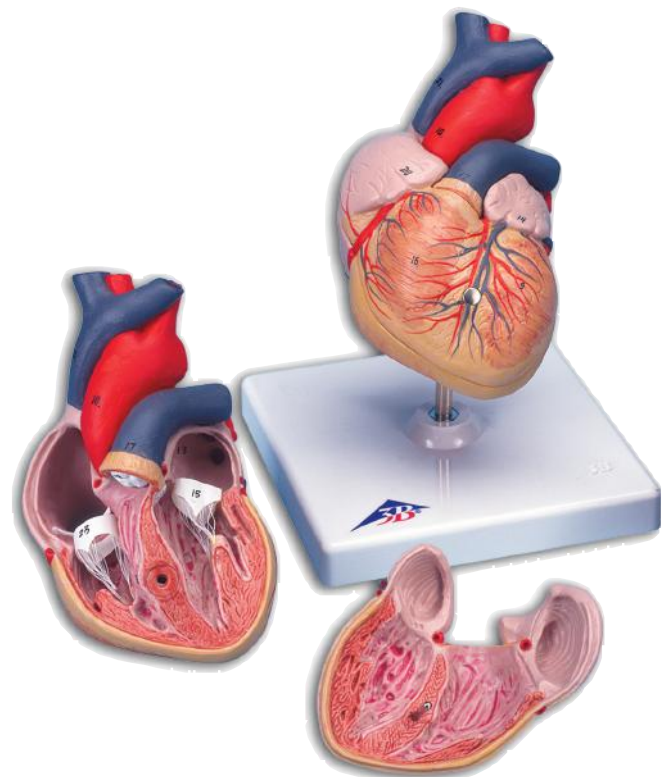
ITEM # ATB-G08-D ----- \$149.95



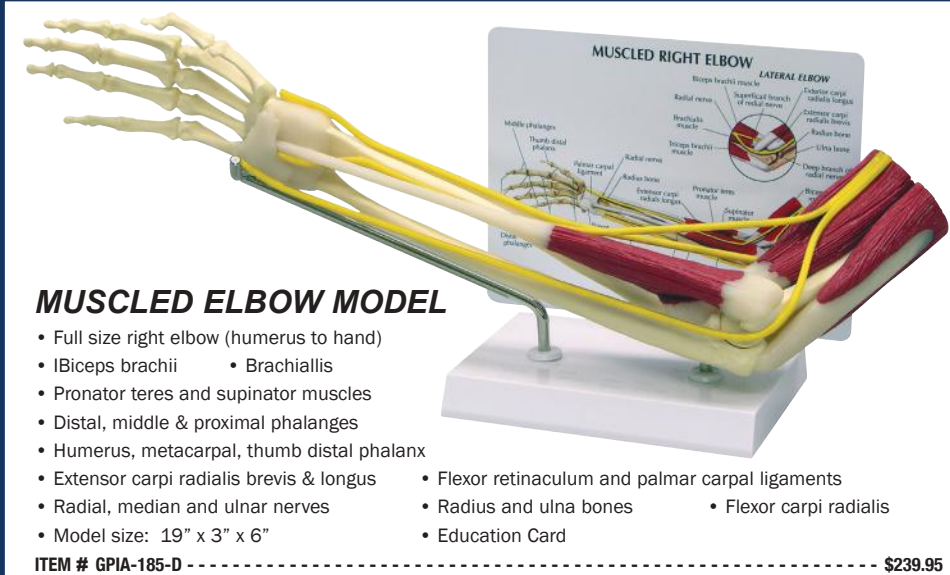
HIGH BLOOD PRESSURE CONSEQUENCES 3-D DISPLAY

- Often referred to as a "silent killer," high blood pressure can result in serious and deadly consequences • This attention-grabbing display uses startling graphics, painted models, and easy-to-read text to reveal the importance of managing hypertension • The high-quality, sculpted models on the display detail eight health consequences of uncontrolled high blood pressure, including: Vision Impairment • Artery Damage • Heart Attack • & More • Perfect for health fairs, clinics, and heart-health education, the display comes in a self-contained carrying case • Easy setup • Compact storage • 28" x 27" opened.

ITEM # 11641----- \$759.95



MUSCLE AND JOINT MODELS



MUSCLED ELBOW MODEL

- Full size right elbow (humerus to hand)
- Biceps brachii • Brachialis
- Pronator teres and supinator muscles
- Distal, middle & proximal phalanges
- Humerus, metacarpal, thumb distal phalanx
- Extensor carpi radialis brevis & longus
- Radial, median and ulnar nerves
- Model size: 19" x 3" x 6"
- Flexor retinaculum and palmar carpal ligaments
- Radius and ulna bones
- Flexor carpi radialis
- Education Card


ITEM # GPIA-185-D ----- \$239.95

MUSCLED HIP MODEL

- Full-size model
- Obturator externus
- Gluteus medius
- Gluteus Minimus
- Iliacus
- Inferior & superior gemellus
- Obturator internus
- Piriformis & psoas muscles
- Articular capsule ligaments
- Base included
- Size: 5" x 4-3/4" x 8-1/4"
- Education Card



ITEM # GPIA-131-D ----- \$199.95



MUSCULAR ARM, 6-PART

- Life-size model
- Deltoid muscle
- Triceps muscle of arm
- Brachioradial muscle
- Radial flexor & extensor muscle of wrist
- Size: p70 cm
- 5 removable muscles
- Biceps muscle of arm
- Long palmar muscle
- Supplied on a base

ITEM # ATB-M11-D ----- \$1595.00

MUSCULAR LEG, 7-PART

- Life-size model
- Sartorius muscle
- Gastrocnemius
- Biceps femoris
- Disassemble upper & lower leg
- Supplied on a base
- 5 removable muscles
- Rectus femoris muscle
- Gluteus maximus
- Semitendinous
- Size: 100 cm

ITEM # ATB-M21-D ----- \$2225.00

LOWER MUSCLED LEG WITH KNEE, 3-PART

- Life-size model
- Removable Gastrocnemius muscle
- Divided horizontally in the knee joint for viewing the joint structures
- Supplied on a base
- Size: 58 cm

ITEM # ATB-M22-D ----- \$1395.00



MUSCLE AND JOINT MODELS



SPORTS SHOULDER

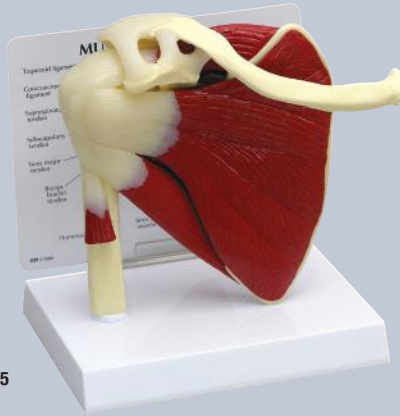
- Upper half of the humerus
- Clavicle & the shoulder blade
- Muscles are highlighted in color
- Adduction
- Outward rotation
- Rotator cuff
- 4 removable muscles
- Retroversion
- Inward rotation
- Circumduction
- Anteversion
- Elevation
- Supplied with stand
- Adduction
- Size: 18" x 18" x 24 cm

ITEM # 85057- ----- \$495.00

MUSCLED SHOULDER MODEL

- Full size right shoulder
- Subcapularis
- Acromion
- Humerus
- Teres major & minor muscles
- 8 ligaments & tendons
- Education Card
- Size: 5-1/2" x 6" x 6"
- Infraspinatus
- Supraspinatus
- Clavicle
- Scapula

ITEM # GPIA-181-D ----- \$169.95



LIFE-SIZE FUNCTIONAL JOINT MODELS

- Life-size
- Fully flexible joints
- Anteversion
- Retroversion
- Internal/external rotation & more

HIP
ATB-A81-D
\$179.95



SHOULDER
ATB-A80-D
\$179.95



KNEE
ATB-A82-D
\$179.95

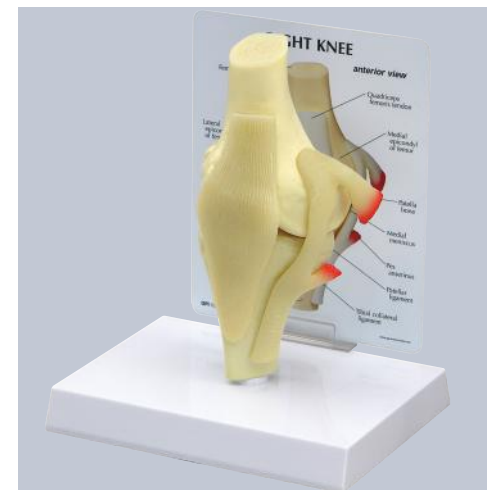
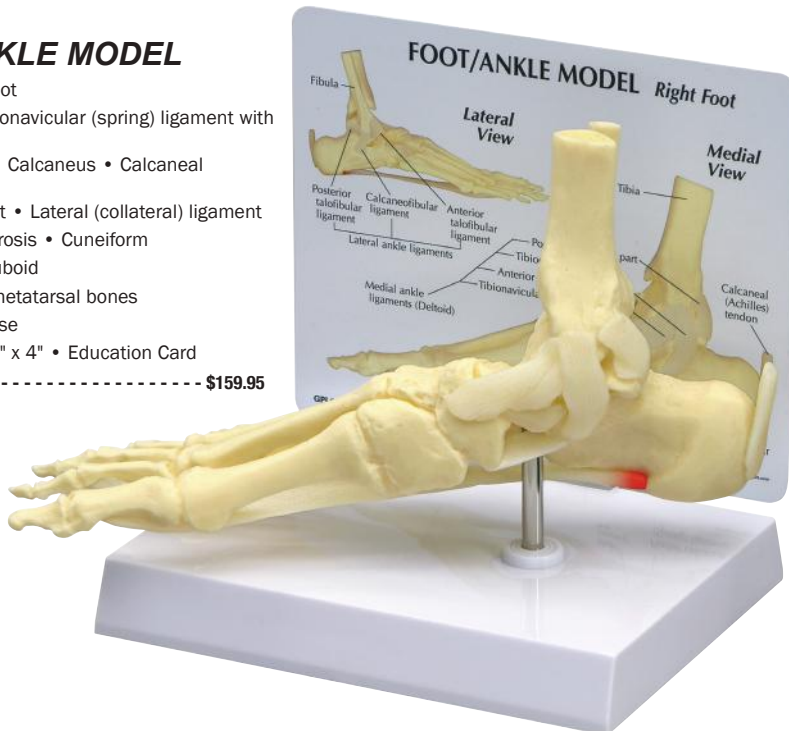


ELBOW
ATB-A83-D
\$179.95

FOOT/ANKLE MODEL

- Life-size right foot
- Plantar calcaneonavicular (spring) ligament with plantar fasciitis
- Tibia • Fibula • Calcaneus • Calcaneal (Achilles) tendon
- Deltoid ligament • Lateral (collateral) ligament
- Plantar aponeurosis • Cuneiform
- Phalanges • Cuboid
- Navicular and metatarsal bones
- Removeable base
- Size: 9" x 2-3/4" x 4" • Education Card

ITEM # GPIA-198-D ----- \$159.95

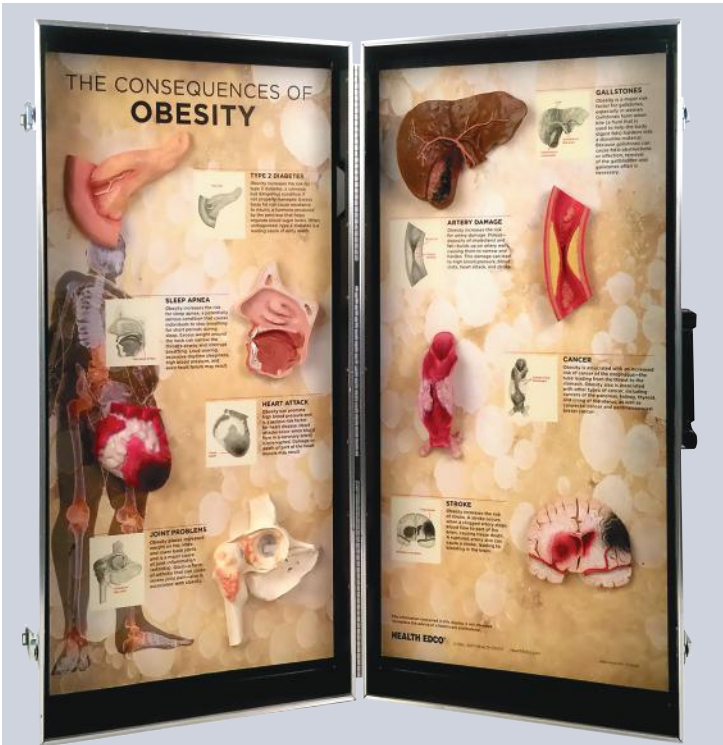


BASIC KNEE MODEL

- Full size right knee
- Femur • Fibula
- Patella • Tibia • Anterior cruciate
- Lateral & medial meniscus
- Fibular & tibial collateral
- Quadriceps femoris tendon
- Patellar & posterior meniscofemoral ligaments
- Size: 3-1/2" x 2-3/4" x 6" • Education Card

ITEM # GPIA-100-D ----- \$129.95





THE CONSEQUENCES OF OBESITY DISPLAY

- Life-size, hand-painted models • Explains the dangers of obesity
- Models are permanently mounted • Clearly describes each condition
- Ideal for health fairs, schools, or any nutrition education event
- 28" x 27" opened • Sturdy wooden case

ITEM # 85-79645-D ----- \$749.95



MYPLATE BANNER SET

- A 31" x 30" MyPlate Banner • MyPlate Charts (2) • A MyPlate Tear Pad
- MyPlate Starter Faux Food Package with 20 foods
- Food cards with nutrition information about each of the 20 faux foods
- Presentation notes with fun game and activity ideas (three 5 lb. weights and two-2 lb. weights)
- Child Model includes a total of 15 lbs of weight (one 5 lb. and four 2 1/2 lb. weights)

ITEM # 11050 ----- \$699.95

WEIGHT GAIN DETERRENT VEST

- Great teaching tool
- Simulates the "look" and "feel" of excess body fat
- Insert weights in varying increments into the vest's interior pocket
- Experience the additional weight and limited range of motion
- An excellent way to start group discussion about healthy eating habits
- Adult model includes a total of 20 lbs of weight (three 5 lb. weights and two-2 lb. weights)
- Child Model includes a total of 15 lbs of weight (one 5 lb. and four 2 1/2 lb. weights)

ADULT SIZE
ITEM # 85-26003-D ----- \$579.95

CHILD SIZE
ITEM # 85-26004-D ----- \$499.95



VISUALIZE YOUR PORTION SIZE DISPLAY

- Featuring clever combinations of common foods and household objects, this display trains viewers' eyes to recognize portion sizes by relating them to everyday things
- Models include a CD/pancake representing 1 oz of grains, a deck of cards/steak representing 3 oz of meat, a tennis ball/orange representing a medium fruit, and more
- Comes in portable carrying case that measures 20" x 14" x 3 1/2"

ITEM # 11642 ----- \$679.95



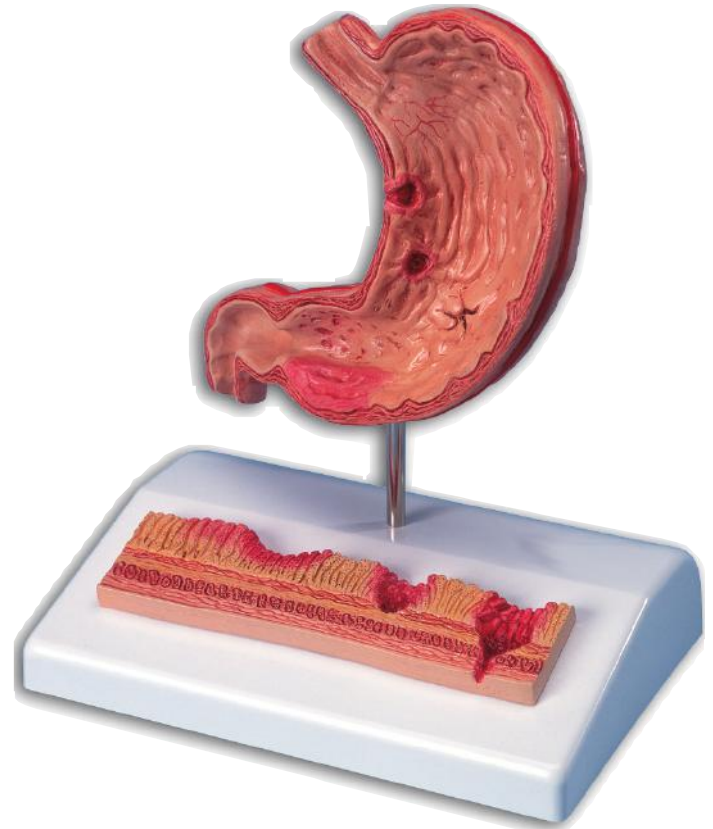
DIGESTIVE & URINARY SYSTEM



KIDNEY STONE

- Informative model about kidney stones & urinary stones • Natural size of an opened right kidney • The renal calices, the renal pelvis & the ureter are opened
- Renal pyramids • Origin of the upper calix group • Renal cortex • Connecting tubule of the lower calix group • 4 original pictures shows various kidney stones

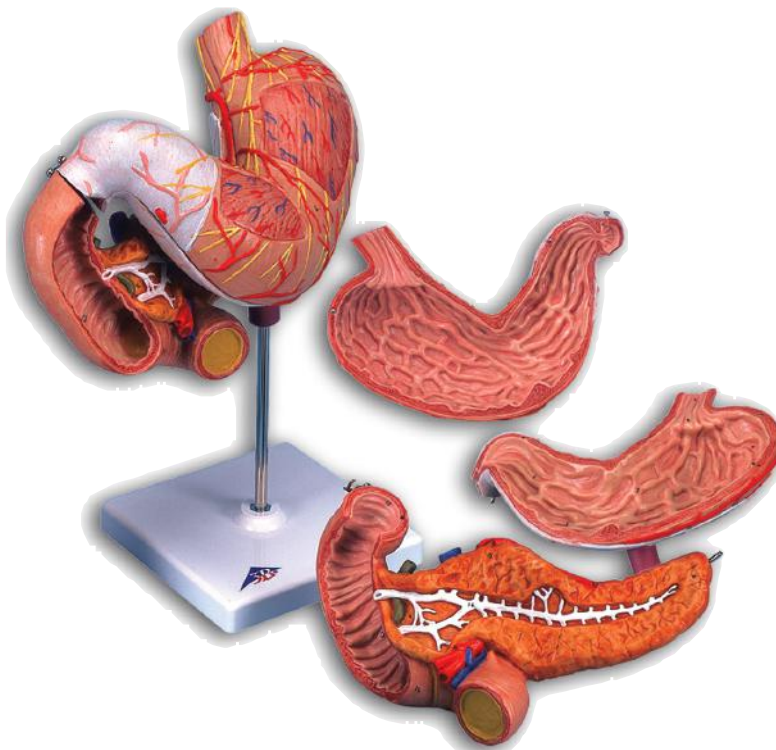
ITEM # ATB-K29-D ----- \$159.95



STOMACH WITH ULCERS

- Stages of gastritis from a light gastric ulcer to a perforation • Half life-size esophagus & duodenum attachment • Erythematous, Erosive, Hemorrhagic, Acute, Atrophic & Hypertrophic gastritis • Healing stage with scar formation • Bleeding & perforated ulcer • Healthy mucous membrane
- Mounted on base • Size: 14" x 10" x 17 cm

ITEM # ATB-K17-D ----- \$159.95



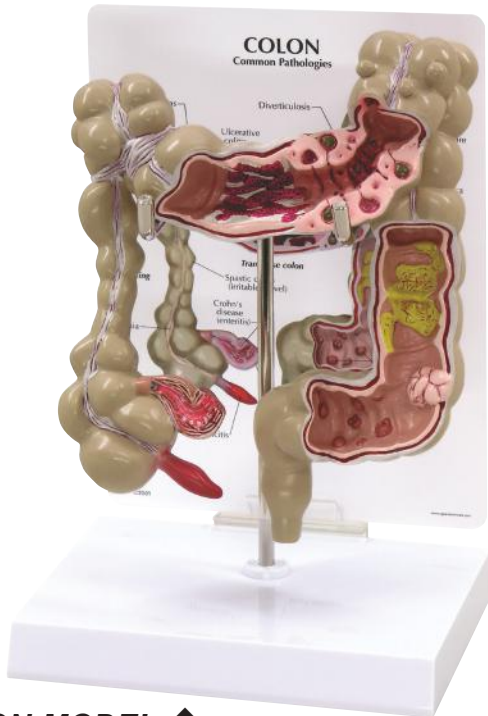
STOMACH, 3-PART

- Different & individual layers of the stomach wall • Removable front half of the stomach • Lower esophagus • Vessels • Nerves • Removable duodenum & pancreas • Supplied on a stand • Size: 25" x 22" x 12 cm

ITEM # ATB-K16-D ----- \$499.95



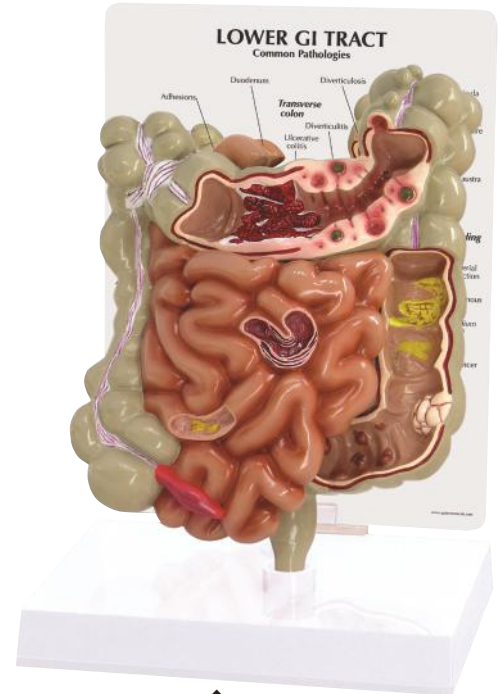
OTHER MODELS



COLON MODEL ↑

- Cut-away view model with the following common pathologies: adhesions, appendicitis, bacterial infection, cancer, Crohn's disease, diverticulitis, diverticulosis, polyps, spastic colon, and ulcerative colitis • Comes with stand and key card
- Size: 6" x 2.5" x 7.75"

ITEM # 11810----- \$159.95



GI TRACT MODEL ↑

- Cut away view model of the small and large intestine with the following common pathologies: Adhesions, appendicitis, bacterial infections, cancer, Crohn's disease, diverticulitis, polyps, spastic colon, and ulcerative colitis
- Comes with stand and key card • Size: 6" x 2.5" x 7.75"

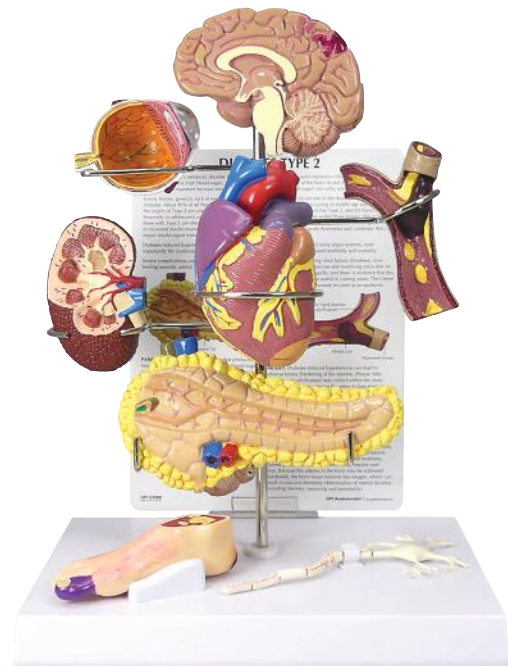
ITEM # 11812----- \$199.95



RECTUM MODEL ↑

- One and one-half times life size cutaway model displays ulcerative colitis, internal and external fistula, internal and external hemorrhoids, annular cancer, sessile polyp, submucosal abscess, skin tag, pedunculated polyp, supralelevator abscess, ischiorectal abscess, cryptitis, diverticulum, condyloma acuminatum, fissure, and condyloma latum • Comes with stand and key card • Size: 5.5" x 2.5" x 7"

ITEM # 11813----- \$139.95



DIABETES MODEL ↑

- Features models of the brain, eye, heart and artery, kidney, pancreas, neuron, and foot, creating a great visual for explaining the effects of type 2 diabetes • Key card discusses related conditions such as stroke, heart disease, and foot ulcerations
- A great tool to raise awareness about the many consequences of type 2 diabetes
- Comes with stand and key card • Size: 8.5" x 10" x 6.5"

ITEM # 11816----- \$259.95



OTHER MODELS



RHEUMATOID ARTHRITIS HAND MODEL ↑

• A full size right hand with cutaway views to reveal the effects of rheumatoid arthritis on ligaments, flexor and extensor tendons, muscle, cartilage, bones, synovial membrane, and joint spaces • A cross-section of the metacarpophalangeal joint capsules shows progression of the disease, including synovial swelling, erosion, and degeneration • Swan neck and boutonniere deformities are depicted on the second and third phalanges, respectively • Flexor tendons can be lifted for better viewing of carpals • Comes with stand and key card • Size: 6" x 3-2/5" x 7-4/5"

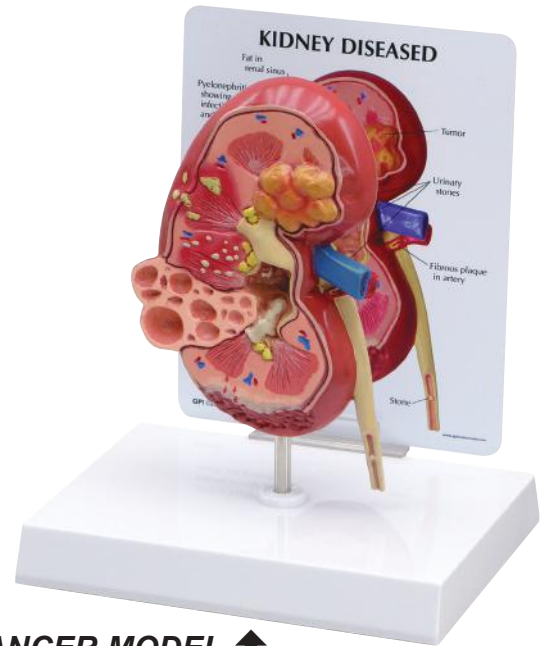
ITEM # 11818----- \$159.95



CATARACT EYE MODEL ↑

• Oversized normal eye model with cut-away to show inner anatomy • Includes five interchangeable lenses that show various types of cataract conditions including: subcapsular, capsular, mature, cortical and nuclear • Lens and cornea are removable • Comes with stand and key card • Size: 5" x 3" x 4"

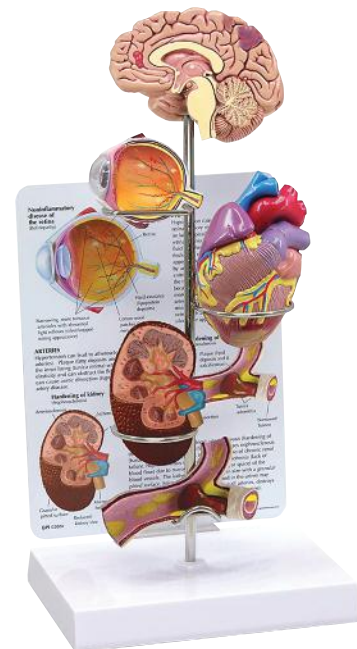
ITEM # 11819----- \$159.95



KIDNEY CANCER MODEL ↑

• An oversized two-sided kidney anatomy model showcasing a normal anatomy cutaway on one side and a diseased anatomy cutaway on the other side • The pathologies shown in the diseased anatomy cutaway include the following: infection, scarring, atrophy, urinary (kidney) stones, tumor, polycystic disease, and hypertension effects • Comes with stand and key card • Size: 3.75" x 2.5" x 6.5"

ITEM # 11821----- \$159.95



HYPERTENSION MODEL ↑

• Help parents and students understand that hypertension causes systematic damage to multiple organs • This model set features models of the brain, heart, eye, kidney, and artery • Key card describes the role of hypertension plays in damaging these vital organs • A great way to show the importance of managing blood pressure • Comes with stand and key card • Size: 6.5" x 15" x 5"

ITEM # 11822----- \$209.95

ORDER ONLINE OR
BY PHONE

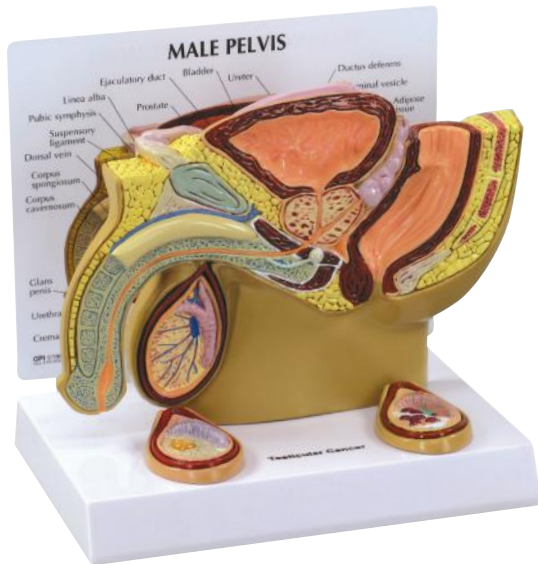


www.NIMCOinc.com



270-273-5000

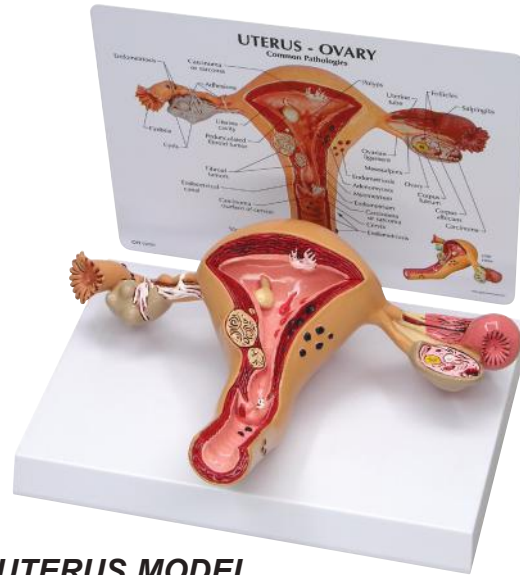
REPRODUCTIVE HEALTH



MALE PELVIS WITH TESTICLE MODEL

- One-half scale, mid-sagittal section male pelvis
- Shows anatomy of the pelvis and testis
- Testicle with cancer is included
- Testicle depicts a seminoma tumor, one of the two most common tumors
- 2-sided education card features the male pelvis on one side and 3 stages of testis tumors on the second side
- Model Size: 7 1/4" x 1" x 4 3/4" • Card Size: 6 1/2 x 5 1/4"

GPIA-357-D ----- \$149.95



UTERUS MODEL

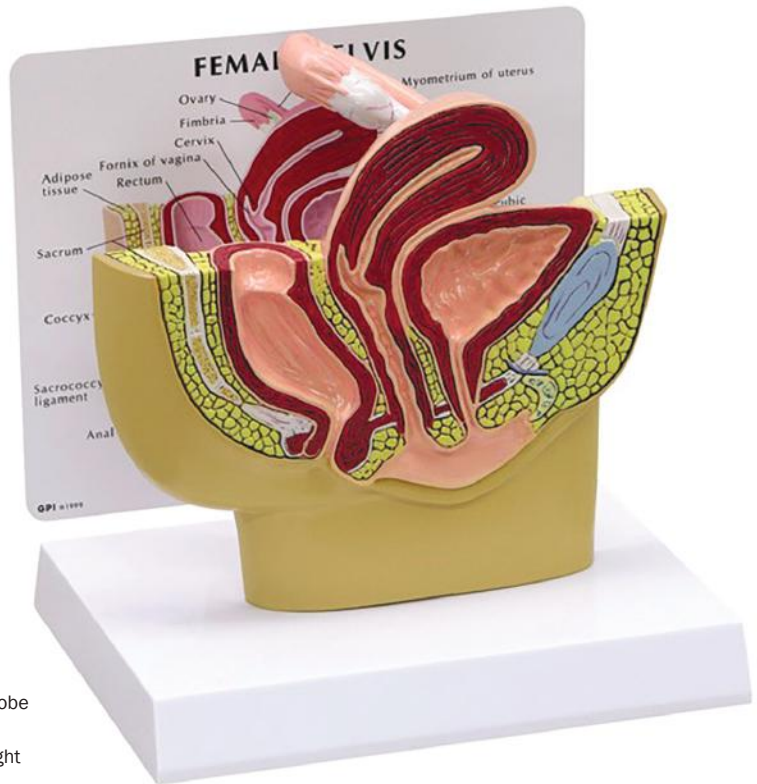
- Illustrates multiple pathologies, some of which include:
- Adhesions • Carcinoma in four common areas
- Cysts • Endometriosis Fibroids • Pedunculated fibroid tumor
- Polyps & Salpingitis • 8-3/4" x 6-1/4" x 2-1/2"

GPIA-348-D ----- \$139.95

BREAST CANCER SOFT TISSUE

- Made of durable lifelike material with 2 lumps that simulate typical tumor growth
- 2-sided education card shows 6 possible tumor locations on one side
- 4 stages of breast cancer on the second side
- Model size: 3"x3 1/2" x 1"
- Card Size: 6 1/2"x5 1/4"

GPIA-340-D ----- \$179.95



FEMALE PELVIS

- Mid-sagittal cross-section of the pelvis showing female anatomy
- Ovary and fallopian tube included
- Model Size: 6-1/4" x 2-3/4" x 5-1/2"

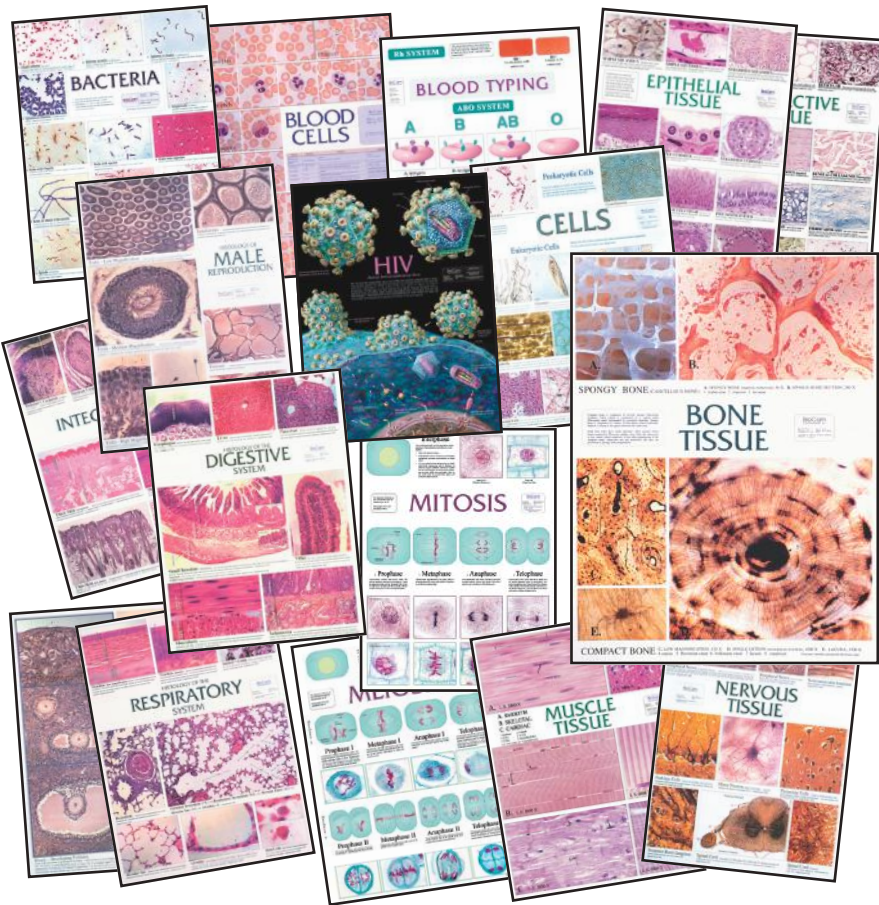
ITEM #11489- ----- \$149.95



PROSTATE

- Two sets of three full size prostates
- Shown include: Normal prostate, Normal size prostate with hard nodule below right lobe surface, Prostate with enlarged right lobe, Enlarged prostate, symmetrical surface, slight median furrow
- Enlarged prostate, hard nodule below right base surface, Enlarged prostate, hard irregular surface with seminal vesicle involvement
- Model size 6-1/2" x 5" x 1-3/4"

• Card size: 6-1/2"x 5-1/4"
GPIA-300-D ----- \$139.95



ANATOMY CHARTS

- Set of 18 Laminated Charts
- Measures 18" x 24" each

Individual Chart - Use ITEM # LISTED BELOW - - - - - \$29.99 ea.
All 18 Charts - ITEM # BCC-SERIES-WC - - - - - \$499.00 (save \$40)

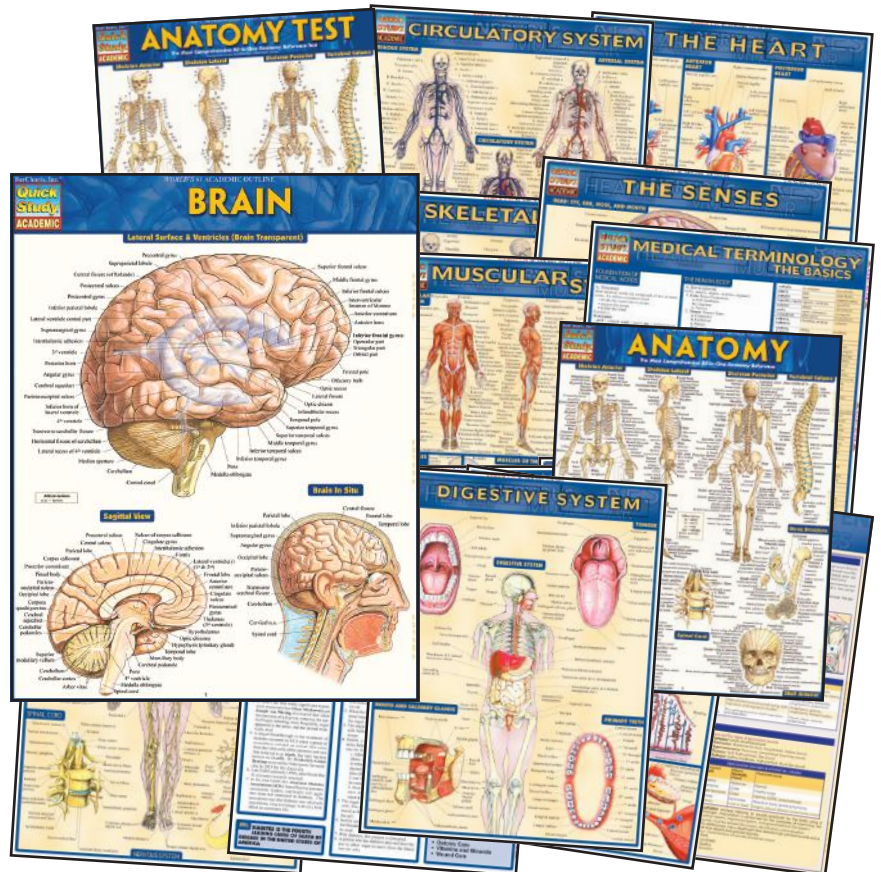
| ALL CHARTS SOLD AT \$29.99 EACH | CHART ITEM # |
|---------------------------------|--------------|
| 1. BACTERIA | BCC-04-WC |
| 2. BLOOD CELLS | BCC-05-WC |
| 3. BLOOD TYPING | BCC-06-WC |
| 4. EPITHELIAL TISSUE | BCC-10-WC |
| 5. CONNECTIVE TISSUE | BCC-11-WC |
| 6. BONE TISSUE | BCC-12-WC |
| 7. MALE REPRODUCTION | BCC-16-WC |
| 8. DIGESTIVE SYSTEM | BCC-17-WC |
| 9. URINARY SYSTEM | BCC-18-WC |
| 10. CELLS | BCC-07-WC |
| 11. MITOSIS | BCC-08-WC |
| 12. MEIOSIS | BCC-09-WC |
| 13. MUSCLE TISSUE | BCC-13-WC |
| 14. NERVOUS TISSUE | BCC-14-WC |
| 15. FEMALE REPRODUCTION | BCC-15-WC |
| 16. INTEGUMENTARY SYSTEM | BCC-19-WC |
| 17. RESPIRATORY SYSTEM | BCC-20-WC |
| 18. HIV | BCC-47-WC |

MEDICAL CHART SERIES

- Set of 17 illustrated full color charts
- Easier to use than the classic textbook with cellophane plates
- Fabulous study guides
- 8.5" x 11" Laminated • Fitted for binder

Individual Chart - Use ITEM # Listed Below - - - - - \$17.95 each
All 17 Charts - ITEM # BAR-MPS-P - - - - - \$199.95 (save \$20)

| ALL CHARTS SOLD AT \$17.95 EACH | CHART ITEM # |
|--------------------------------------|--------------|
| 1. BRAIN | BAR-517-3-P |
| 2. ANATOMY TEST | BAR-515-7-P |
| 3. ANATOMY | BAR-491-6-P |
| 4. CIRCULATORY SYSTEM | BAR-524-6-P |
| 5. THE HEART | BAR-537-8-P |
| 6. SKELETAL SYSTEM | BAR-495-9-P |
| 7. THE SENSES | BAR-499-1-P |
| 8. DIGESTIVE SYSTEM | BAR-525-4-P |
| 9. MUSCULAR SYSTEM | BAR-497-5-P |
| 10. NERVOUS SYSTEM | BAR-498-3-P |
| 11. REPRODUCTIVE SYSTEM | BAR-545-9-P |
| 12. RESPIRATORY SYSTEM | BAR-592-0-P |
| 13. WOUND CARE | BAR-574-2-P |
| 14. DIABETES | BAR-733-8-P |
| 15. MEDICAL TERMINOLOGY (THE BODY) | BAR-541-6-P |
| 16. MEDICAL TERMINOLOGY (THE BASICS) | BAR-538-6-P |
| 17. NURSING | BAR-493-2-P |



NIMCO, Inc.

102 Hwy. 81 North
 Calhoun, KY 42327
 Ph: 270-273-5000
 Ph: 1-800-962-6662

www.NIMCOINC.COM

Presorted
 Standard
 U. S. Postage
 PAID
 NIMCO, Inc.

CATALOG CODE

673

Please route this
 catalog to:

**ANATOMY
 TEACHERS**

**PHYSIOLOGY
 TEACHERS**

**HEALTH
 OCCUPATIONS**

**BIOLOGY
 TEACHERS**

**FUNDAMENTAL
 NURSING INSTR.**

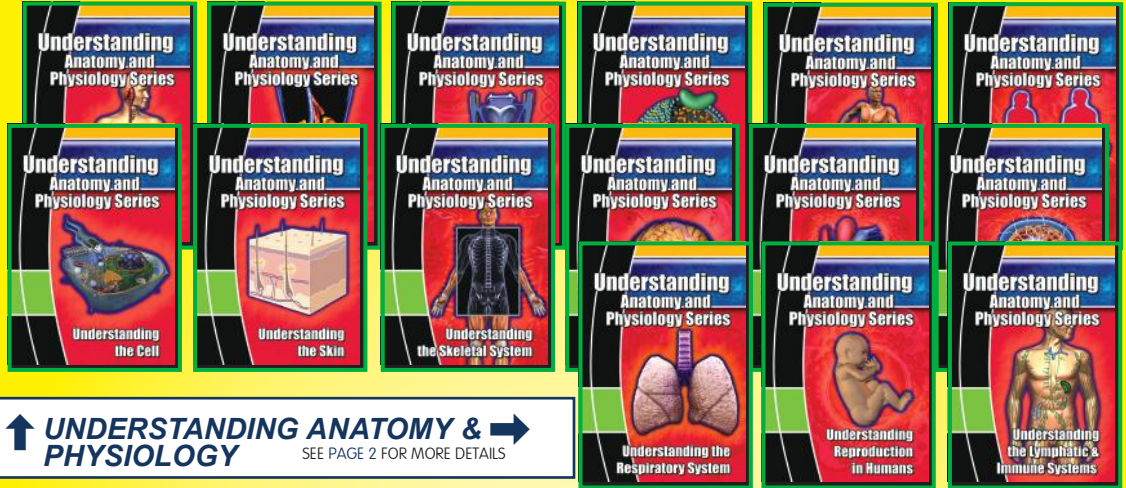
**NURSING
 ASSISTANT INSTR.**

**MEDICAL
 TERMINOLOGY**

Please Route to other appropriate
 persons and/or departments

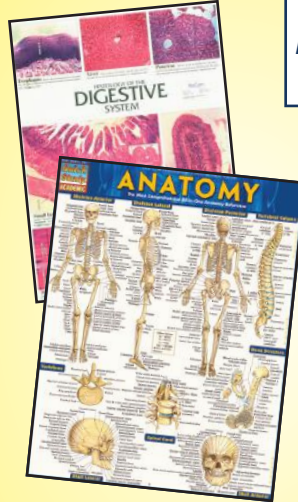
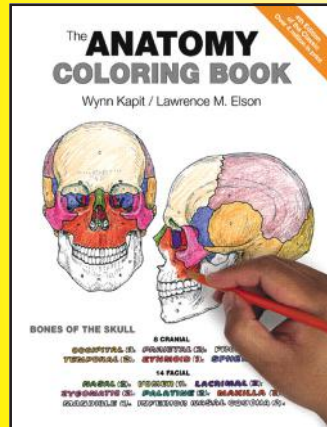
Thank You!

- Human Anatomy Teachers
- Human Physiology Teachers
- Health Occupations Instr.
- Human Biology Teachers
- Fundamental Nursing Instructors
- Nursing Assistant Instr.
- Medical Terminology Teachers
- Nutritionist
- Allied Health Instructors
- Health Teachers
- P.E. Teachers & Therapist
- Health Information Center
- Public & Community Health
- Obstetric & Newborn
- Infectious Diseases
- Patient Education
- In-Service Education
- Staff Development Edu.
- Reproductive Health Ser.
- Women's Health Center
- Genetics-DNA Instr.
- Medical Library/LRC
- Biotechnology Instr.
- Health Promotions Dir.

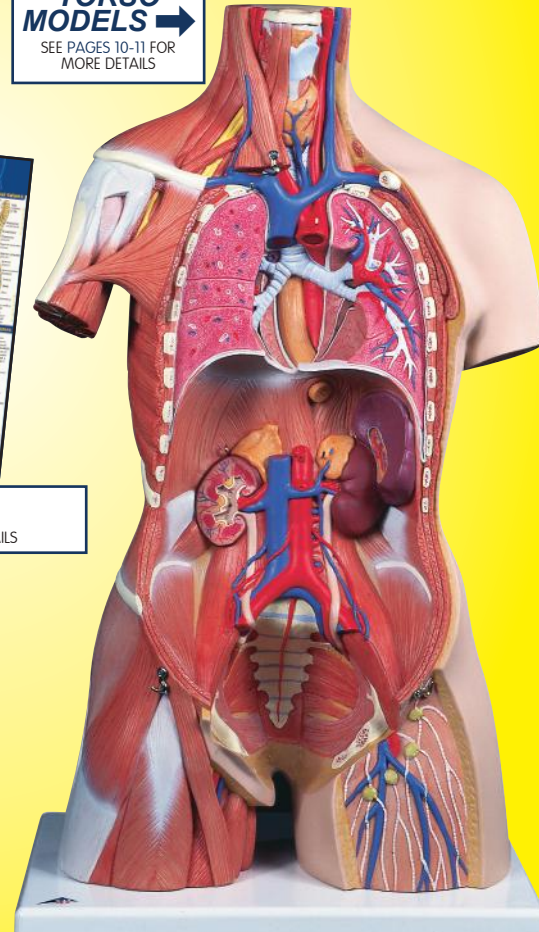


↑ UNDERSTANDING ANATOMY & PHYSIOLOGY
 SEE PAGE 2 FOR MORE DETAILS

↓ TERMINOLOGY ↓
 SEE PAGE 2 FOR MORE DETAILS



**TORSO
 MODELS** →
 SEE PAGES 10-11 FOR
 MORE DETAILS



↑ CHARTS
 SEE PAGE 27 FOR MORE DETAILS



↑ SKELETON MODELS ↑
 SEE PAGES 4-7 FOR MORE DETAILS

Order forms can be downloaded online at www.NIMCOinc.com