



OUR MISSION: Connecting Seniors with



SUNDAY WORSHIP
9:00am & 10:30am

Lifelines

News from New Life Christian Church

Matt Malott,
Senior Minister

Bob Kapp,
Associate Minister

Mike Thomas
Worship Minister

www.nlchristian.org
[New Life Facebook Page](#)

Volume 18

February 3, 2025

Number 5



Matt Malott

Occasionally a worship service seems to touch pretty much everyone. Sunday, I got the benefit of getting to hear a lot of people remark about how good service was. I couldn't agree more. I can't identify any one thing that made it special, it was a culmination of a lot of different aspects. It was just one of those days. Thanks to everyone who made Sunday's worship a great blessing.

We were able to enjoy the choir and orchestra leading us as well as providing special music. The orchestra played an arrangement of "I Speak Jesus" and the choir presented the song, "Lord of Heaven" with Carolyn White doing the solo. It was a powerful way to lead us into our time of observing the Lord's Supper. The service closed with Jill Johnson singing another powerful song, "They Could Not". The entire morning was terrific. I told Connie, "This is one of those days where you thrilled to get to sit through worship twice."

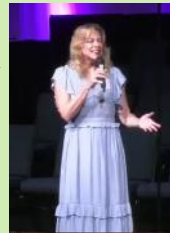


Construction continues on the expansion of the Fellowship center. A full report from David Wheeler can be found elsewhere in *Lifelines*. This picture was taken from where the back wall of the expansion will be located. It looks to the north and the back of the present Fellowship Center. If you look close you can



see where the concrete pads will be located that will support the steel beams. It took a long time and a lot of measuring before digging the foundation could begin. From an observer's perspective it seems like an inordinate amount of time goes by. You want to get on with the build. But, the foundation must be perfect or as close to it as possible. If the foundation is out of whack it will affect the entire building.

The same thing is true about how we build our lives. Jesus told a parable about that at the end of the Sermon on the Mount (Matthew 7:24-27). Two men built identical houses in the same location, using the same materials. But, the results were dramatically different when a storm blew through town. One of the houses weathered everything the storm could throw at it. The other house, in the same storm fell flat. What made the difference? It was the foundation. The house that stood had been built on rock while the house that fell had been built on sand. It is essential that we use the proper foundation as we build our lives." Ephesians 2:19-20 says "...you are fellow citizens with the saints, and are of God's household, having been built on the foundation of the apostles and prophets, Christ Jesus Himself being the corner stone..." So, how is your spiritual foundation? Is it solid because it has the proper foundation or perhaps you need to shore it up. There is no end of shaky foundations. Be sure your foundation is built on the Rock, Jesus Christ.



Jill Johnson singing "They Could Not"

Offering Feb.2, 2025

Offering	\$	37,160
Jan. To Date	\$	83,049
Jan. Budget	\$	84,759

Worship Attendance

First Service:	335
Second Service:	254
Total:	589

New Life Christian Church

4701 E CR 462
Wildwood, FL 34785
352-261-5333





Your Hands, God's Work: Make a Difference in Our Church

At New Life, we're excited to share how God has uniquely gifted each member of our church family! When you join our volunteer team, you're not just filling a position – you're answering a divine calling to touch hearts, forge meaningful friendships, and deepen your walk with Christ.

Why Volunteer?

- Connect with Purpose
- Turn your passion into meaningful action that directly impacts our church and community
- Build Lasting Relationships
- Join a supportive network of caring individuals who share your values
- Personal Growth: Develop new skills, discover hidden talents, and strengthen your spiritual journey

How to Get Involved:

1. Stop by the Welcome Center after Sunday services
2. Call our Church office at 352-261-5333
3. Email pura@nlchristian.org

VOLUNTEER OPPORTUNITIES

Prayer Ministry: Join us for a time of private and corporate prayer over individual needs within the church. We also deliver greeting cards to church members for various occasions. This group is open to both men and women. We meet every Wednesday at 8:30am in room 220 (Classroom A) in the Fellowship Center.

Contact Terry Hazard at 352-250-7727 or email terrymhazard@gmail.com

Blessings by the Spoonful: If you like to cook or want to help those in need within our church, this is the ministry for you! Open to both men and women, we provide soup and meals to congregation members who are recovering from surgery, dealing with a loss, or have a short-term need for food services.

Contact Carol Moore at 410-707-2060 or email gingerandmax@gmail.com

Pastoral Care Ministry: Are you called to comfort and support others in times of need? Our Pastoral Care Ministry is looking for compassionate individuals to make a difference in our church community! Offer spiritual support through: hospital and home visits, heartfelt prayer, and caring companionship. Be the light in someone's darkest hour. Your presence can bring hope and healing to those who need it most.

Contact Russ and Lynn Bridges at 904-608-4398 or email lcbridge@bellsouth.net

RAPHA Golf Scramble

Saturday, March 1st

**Registration begins February 2nd
at the RAPHA Counter**

ONLY 80 SPOTS ARE AVAILABLE

SIGN UP EARLY!!

- **Registration \$125.00 per person or \$500 for a team of 4**
- **Place: Pennbrooke Fairways Golf Course**
- **Check in – 8:00-8:45 a.m.**
- **Start Time – 9:00 a.m.**
- **Lunch & awards will follow**

**Payment will be required at time of registration.
Cash, cards, and checks are accepted.
The entire registration fee will go to RAPHA.**



**After only one week of sign ups, we are more than half way
to the maximum 80 people.**

Please don't delay! You can sign up individually or as a team. NLCC will host its first Rapha Golf Scramble on Saturday, March 1. The event will be run by Dave Randall and will feature 20 teams for a total of 80 players. The Scramble will be held at Pennbrooke Fairways Golf Course in Leesburg and will begin at 9:00 a.m. followed by lunch and awards! Rapha Chairperson Connie

Malott says, "this will be a fun and lighthearted event focusing on having a good time and raising money for Rapha!" Both men and women are invited to join the fun. A golf handicap is not needed!

Cost is \$125 per individual, or you may sign up a team of four people for \$500. All proceeds will go to Rapha International. Sign up begins on Sunday, February 2 at the Rapha Counter located in the New Life foyer. The fee is due at the time of registration and can be paid by cash, check, or credit card.



Mike Thomas

Hey folks, we are always trying new things here at New Life. I want to let you know about an event we are doing on February 19th. The music ministry is having an open house. We will be featuring both the choir and orchestra. We are doing this as a recruiting tool. If you have been wondering about playing in the orchestra or singing in the choir, this event is for you.

Come join us in the auditorium from 5-6pm and watch what we do. Both groups will perform one song and we will have a reception afterwards in the foyer, where you can meet those who are in the music ministry and ask questions. We are praying for a good turnout, and praying that if God has been tugging at your heart to join us, you will.

If you have any questions, please contact Jennifer Carlson at 352-261-5333 ext. 508.

Blessings, Mike



Prayer Requests

Ruby Andres, Pray for Ruby & family upon the death of her husband, Peter.
Duane Bennett, back issues
Frank Bruning, illness
Gene Burns, cancer treatments
Terry Elsmore, recovering at home from knee surgery
Vicki Findley, cancer
Larry Givens, recovering at home from pneumonia
Sharon Hedwall, still in recovery
Patti McLain, recovering at home
Jason Moore, back issues
Lynn Parsons, compression fracture in her back
Ruth Shawhan, carpal tunnel surgery
Patty Smith, back surgery recovery
Lynne Sohalski, recovering at home
Jack Sohalski, broken wrist
Tracy White, knee pain

Ongoing Prayer Requests

Gary Bedson, amputation healing
Michelle Brantley, cancer
Ray Brown, Parkinson's
Steve Crawford, Parkinson's
Kiley Daniels LeMaster, cancer
Catherine Daugherty, chemotherapy
Chuck Galloway, pulmonary fibrosis
Fran Philips, memory care
Our prodigal children
Israel & Our Nation
Prayer for those in the plane crashes

*"Heal me, O Lord, and I shall be healed; save me,
and I shall be saved: for thou art my praise."
Jeremiah 17:14*

WHEELER'S WORLD

Your bi-weekly updates on the church building construction brought to you by David Wheeler.

Security fence has been installed and foundation footings are dug and formed. Drain line was installed from the previous retention area to the large retention area at the rear of our property. The next step will be installing plumbing piping that will be beneath the slab.



It is time to sign-up for Glamping With the Girls!

This year's Women's Conference at Lake Yale will be October 3-5th. This event is a wonderful time to spend with your sister in Christ, digging a little deeper in the Word and enjoying a weekend at the lake.

The Guest Speaker will be Melissa Spoelstra. She is the author of many books and Bible studies and is a contributor for Proverbs 31 Ministries First Five app.

The early sign-up sheets will be available at the activities counter. You have three options for this event. If you share a room, the price is \$225.00 pp, if you want a single room the price is \$275.00, and if you want to commute, the price is \$164.00. To secure your place a \$50.00 non-refundable deposit is required by June 1st, and the final payment will be due on August 1st.

If you have any questions, please contact Dori Weinberg at dlweinberg.bruning@gmail.com or 775.600.9017.



UPCOMING EVENTS:

JOIN THE HARMONY: MUSIC MINISTRY OPEN HOUSE

Experience our Music Ministry with a showcase followed by a meet & greet reception!



19TH FEBRUARY
Start from 5 PM - 6PM

This event is open to all musicians and singers in the Wildwood, Oxford, and Villages area.

If you are interested in joining a choir, orchestra, or band, please join us!



RAPHA
INTERNATIONAL

March is for RAPHA 2025

March 1 RAPHA Golf Scramble

March 16 4th Annual Concert with Amy and Friends

March 29 8th Annual All Church Raffle, Lunch, and Live Auction

SAVE THE DATE