

TRAVEL GUIDE

Germany

TELAMON TRAVEL

WWW.TELAMONTRAVEL.COM

2026
EDITION



Welcome to Germany

Germany is a country of structure and soul. Gothic cathedrals rise above medieval squares. Contemporary architecture stands beside baroque palaces. Forested mountains, vineyard-covered riverbanks, and Baltic coastlines shape a landscape that feels both grounded and expansive.

From the cultural depth of Berlin to the elegance of Munich, from the romantic curves of the Rhine River to the alpine drama of the Bavarian Alps, Germany rewards travelers who value heritage, craftsmanship, and thoughtful pacing. Here, precision and creativity coexist.

This guide is your curated companion to exploring Germany with clarity, comfort, and intention. When you are ready, we will shape it into a seamless itinerary designed around your pace and priorities.



AT A GLANCE

Capital: Berlin

Language: German (English is widely spoken in major cities and tourist areas)

Currency: Euro (EUR)

Time Zone: Central European Time (UTC+1)

Visa Requirements: U.S. travelers may stay up to 90 days within the Schengen Area without a visa

Population: Approx. 84 million

Safety Index: Considered a safe and well-regulated destination, with standard urban precautions recommended

When to Visit Germany

HIGH SEASON | JUNE - AUGUST

Ideal for: Festivals, lake regions, alpine touring, outdoor dining

Summer brings long daylight hours, open-air events, and vibrant city energy. Beer gardens, river cruises, and alpine hikes are at their most appealing. Expect higher demand in Bavaria, the Rhine Valley, and major cities.

SHOULDER SEASON | APRIL - MAY & SEPTEMBER - OCTOBER

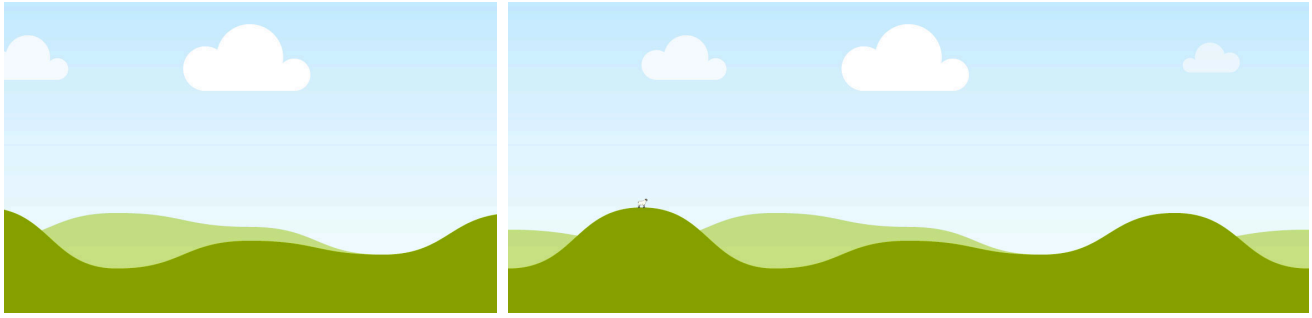
Ideal for: Cultural touring, wine regions, scenic drives

Spring introduces blooming parks and moderate temperatures. Early autumn brings harvest season in wine country and crisp alpine air. For many travelers, this is the most balanced time to explore both cities and countryside.

LOW SEASON | NOVEMBER - MARCH

Ideal for: Museum visits, holiday markets, winter spa retreats

Winter is quieter outside of the festive season. December transforms cities with traditional Christmas markets. January and February are well suited for cultural immersion and alpine stays in the south.



Top 5 Experiences in Germany

01. EXPLORE BERLIN'S LAYERED HISTORY

From the Brandenburg Gate to remnants of the Berlin Wall, the capital presents a complex narrative shaped by empire, division, and reunification. A private historian guide adds clarity and perspective to the experience.

02. CRUISE THE RHINE VALLEY

Sail past vineyard-covered slopes, medieval towns, and hilltop castles between Koblenz and Rüdesheim. The region blends scenic beauty with centuries of trade and winemaking tradition.

03. DISCOVER BAVARIAN CASTLES

Visit Neuschwanstein Castle and nearby Hohenschwangau with strategic timing to avoid peak hours. The surrounding alpine scenery is equally compelling.

04. EXPERIENCE A CLASSICAL MUSIC EVENING

Attend a performance in Dresden, Leipzig, or Munich, where centuries of musical heritage continue to shape contemporary culture. An evening concert adds depth to any cultural itinerary.

05. VISIT GERMANY'S CHRISTMAS MARKETS

From late November through December, historic squares transform into festive villages of wooden stalls, artisan crafts, mulled wine, and traditional sweets. Markets in Nuremberg, Munich, Cologne, and Dresden offer distinct regional character and are best enjoyed in the early evening, when lights illuminate cathedral spires and town halls.

We will design each experience with thoughtful pacing, private access where possible, and seamless logistics throughout.

EXPLORE [DEST:]





More to Explore

Germany is defined by regional identity. Dialects shift. Architecture changes. Culinary traditions evolve within just a few hours of travel. Moving between regions is not simply a change of scenery, but a shift in atmosphere and perspective.

THE BLACK FOREST (BADEN-WÜRTTEMBERG)

Dense woodland, spa towns, and traditional craftsmanship define this southwestern region. It is well suited to travelers seeking nature, hiking, and restorative wellness stays.

SAXON SWITZERLAND

Dramatic sandstone formations and panoramic viewpoints near Dresden create an unexpected landscape ideal for guided hiking and scenic photography.

THE ROMANTIC ROAD (BAVARIA)

A historic route linking medieval towns such as Rothenburg ob der Tauber and Füssen. Timber-framed houses, town walls, and church spires define the setting.

HAMBURG

A maritime city of canals, contemporary architecture, and a strong cultural calendar. Its harbor and warehouse district offer a distinct northern identity.

THE MOSEL VALLEY

Steep vineyards and small riverside villages produce some of Germany's most celebrated Rieslings. Pair scenic drives with private tastings for a refined experience.

Curated Tip: Germany benefits from strategic routing. We will align regions logically to minimize transfers and allow each area to unfold without unnecessary backtracking.



Where to See Iconic Sights

Germany's landmarks reflect artistic achievement, resilience, and engineering precision. With thoughtful planning, these sites feel immersive rather than crowded.

THE BRANDENBURG GATE | BERLIN

A neoclassical monument that has witnessed monarchy, war, division, and reunification. Today it stands as a symbol of unity and modern identity.

COLOGNE CATHEDRAL | COLOGNE

A towering Gothic masterpiece overlooking the Rhine. Its twin spires and intricate interior reward unhurried exploration.

NEUSCHWANSTEIN CASTLE | BAVARIA

Set against alpine peaks, this 19th-century palace reflects romantic imagination and architectural ambition. Early or late entry times enhance the experience.

ZUGSPITZE | BAVARIAN ALPS

Germany's highest peak offers panoramic alpine views accessible by cable car. Clear days provide exceptional visibility across the region.

THE REICHSTAG DOME | BERLIN

A modern glass dome atop Germany's historic parliament building symbolizes transparency and democratic renewal. Advance reservations are recommended.

Cultural Etiquette *and Smart Travel Tips*

Germany values order, clarity, and mutual respect in public life. Understanding a few social norms enhances comfort in cities, countryside regions, and spa environments alike.

DO

- **Greet with “Guten Tag” or “Guten Abend”** when entering shops or restaurants.
- **Be punctual.** Arriving even five minutes late for a reservation or tour is considered impolite.
- **Wait for the pedestrian signal** before crossing streets.
- **Carry some small cash** for markets, bakeries, and smaller establishments.
- **Speak at a moderate volume** in public transport and residential areas.

DON'T

- **Assume shops are open on Sundays.** Many close except in major stations or airports.
- **Jaywalk at intersections,** especially when children are present.
- **Enter homes with shoes on** unless invited to do so.
- **Expect overly informal service;** professionalism is standard.
- **Confuse direct communication with unfriendliness;** clarity is valued.

Public transportation operates on an honor system in many cities. Validate tickets properly to avoid fines. Recycling systems are structured and clearly marked—follow sorting guidelines where possible.

Curated Tip: When dining, make eye contact and say “Prost” before your first sip if someone offers a toast. Small gestures of awareness are appreciated and remembered.



A Taste of Germany

German cuisine reflects regional diversity, seasonality, and agricultural heritage. Meals are often structured and satisfying, with strong traditions tied to geography.

LOCAL SPECIALTIES

- **Bratwurst & Sausages:** Varied by region, often served with mustard and fresh bread.
- **Schnitzel:** Breaded cutlets traditionally paired with potatoes or salad.
- **Sauerbraten:** Slow-marinated roast with deep, balanced flavor.
- **Spaetzle:** Soft egg noodles common in southern Germany.

SEASONAL SPECIALTIES

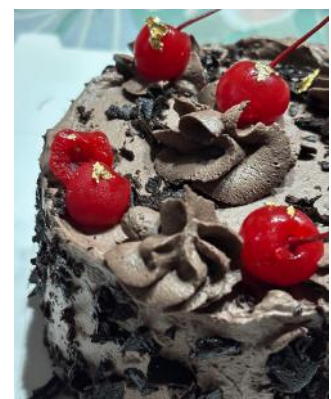
- **White asparagus (Spargel)** in spring, celebrated with near reverence.
- **Wild game** dishes in autumn, particularly in forested regions.
- **Festive baked goods** during Advent season.

FROM THE BAKERY

- **Pretzels (Brezn):** Crisp exterior, tender interior, best enjoyed fresh.
- **Rye Breads:** Dense, flavorful, and central to daily dining.
- **Black Forest Cake:** Chocolate sponge layered with cherries and cream.
- Afternoon coffee and cake (**Kaffee und Kuchen**) remains a cherished ritual.

WINES & BEER

- **Riesling (Mosel & Rhine):** Crisp to off-dry styles with strong minerality.
- **Silvaner (Franconia):** Subtle and food-friendly.
- **Regional Beers:** Bavaria and Cologne each maintain distinct brewing traditions.



Wellness in Germany

Germany's wellness philosophy is structured and restorative. Thermal bathing, forest immersion, and preventative health traditions are long established and widely respected.

THERMAL SPA TOWNS

- **Baden-Baden:** Roman-Irish bathing circuits and historic bathhouses.
- **Bad Kissingen:** A UNESCO-recognized spa town with classical architecture.
- **Bad Wörishofen:** Known for Kneipp hydrotherapy traditions.

SAUNA CULTURE

Saunas are integral to wellness culture and often textile-free in designated areas. Quiet relaxation rooms, hydrotherapy pools, and structured thermal circuits are common features.

ALPINE RETREATS

The Bavarian Alps offer mountain air, structured spa programs, and outdoor movement. Resorts integrate fitness, nutrition, and hydrotherapy.

FOREST & MOUNTAIN RESTORATION

The Black Forest and Bavarian Alps offer guided forest walks, alpine spa resorts, and movement-based wellness programs focused on long-term health.

MEDICAL WELLNESS & PREVENTATIVE CARE

Germany's healthcare infrastructure supports structured wellness retreats that combine spa therapies with medical consultation and nutritional planning.

Curated Tip: Spa visits are often unhurried and circuit-based. Plan for several hours rather than a single treatment to fully experience the restorative rhythm.





Getting Around Germany

Germany's transportation network is among Europe's most efficient. Rail, road, and regional transit systems are integrated and dependable.

TRAIN TRAVEL

High-speed ICE trains connect Berlin, Munich, Frankfurt, Cologne, and Hamburg comfortably. First-class tickets offer quieter cabins and enhanced service.

PRIVATE DRIVERS AND TRANSFERS

Ideal for rural Bavaria, the Black Forest, the Romantic Road, and wine regions. Door-to-door service minimizes complexity and enhances comfort.

TAXIS & RIDESHARE

Licensed taxis are widely available and reliable. In major cities, they can be hailed at designated stands or booked via app. Rideshare services operate in larger metropolitan areas but are less common in rural regions.

DOMESTIC FLIGHTS

Useful for longer north-south distances when time is limited.

SELF-DRIVE

Well suited to countryside routes. Parking in city centers can be restricted and regulated; we typically recommend rail or private transfers within major cities.

Curated Tip: Reserve seat assignments on longer train journeys, particularly in summer and during holiday market season.



Packing Tips for a Seamless Escape

Germany's climate varies significantly by region and season. Urban exploration, countryside drives, and cultural evenings often require adaptable wardrobe planning.

ESSENTIAL WARDROBE

- Layered pieces for variable weather
- Comfortable leather or structured walking shoes
- Tailored outerwear for cooler months
- Smart-casual attire for dining and concerts
- Wool or insulated coat for winter travel

PRACTICAL MUST-HAVES

- Compact umbrella or rain shell
- Universal adapter (Type C and F, 230V)
- Secure crossbody bag
- Daypack for countryside excursions
- Reusable water bottle

WINTER ADDITIONS

- Thermal layers
- Gloves and scarf for Christmas market season
- Weather-resistant footwear

Curated Tip: Choose neutral, versatile pieces that transition easily between museum visits, countryside touring, and evening dining. Streamlined packing enhances mobility, especially when using rail transport.



Gratuities & Service Tips

Tipping in Germany is customary but moderate. It reflects appreciation rather than obligation.

RESTAURANTS & CAFÉS

Round up the bill or tip 5–10% for attentive service. Payment is typically made directly to the server, so state the total including tip when paying.

HOTELS

- **Housekeeping:** €2–3 per night
- **Porters:** €2–3 per bag
- **Concierge:** €10–20 for meaningful assistance

GUIDES & DRIVERS

- **Private guides:** €15–25 per person for half-day; €25–40 for full-day
- **Private drivers:** €20–50 depending on duration

Curated Tip: Service charges are not typically added automatically. We will advise you based on the level of service included in your itinerary.



Travel Safety Overview

Germany is considered one of Europe's safest and most organized destinations. Infrastructure, healthcare, and public services are highly reliable.

EMERGENCIES AND ASSISTANCE

- Emergency number: 112
- Pharmacies are clearly marked and widely available.
- Hospitals and clinics provide high-quality care in major cities.

WHAT TO EXPECT

- Petty theft can occur in busy train stations and tourist-heavy areas.
- Public transportation is safe and well monitored.
- Demonstrations occasionally occur in major cities and are typically peaceful.

HEALTH & PREPARATION

- Tap water is safe to drink throughout the country.
- Travel insurance is strongly recommended for medical care and trip disruptions.

Curated Tip: Structured itineraries with pre-arranged transfers and centrally located hotels significantly enhance ease and security throughout your journey.





Your Escape Awaits

Germany offers a refined balance of history, innovation, and landscape. From classical concert halls to alpine vistas and riverside vineyards, it is a destination shaped by depth and design.

Whether you envision a multi-city cultural journey, a Bavarian alpine retreat, or a wine-focused exploration of the Rhine and Mosel valleys, we will curate each detail so your experience feels seamless and considered.

Laura + Ann



Let's curate your dream
German escape.

Laura Adams
Certified Travel Advisor

Ann Mayers
Travel Curator

tel. 760.645.8775
hello@telamontravel.com
www.telamontravel.com

This guide is intended for personal use only and may not be reproduced, distributed, or sold without written permission. Telamon Travel operates as an independent affiliate of Fora Travel, CST #2151995-50. Registration as a seller of travel does not constitute approval by the State of California.



© 2026 Telamon Travel. All rights reserved.
www.telamontravel.com

Telamon Travel operates as an independent affiliate of Fora Travel, CST #2151995-50.
Registration as a seller of travel does not constitute approval by the State of California.