



243 ROSE PARK DRIVE

ROSEDALE-MOORE PARK





La Vie en Rose Park - Ideally situated in the heart of Toronto's coveted Moore Park, this exquisite residence is a study in refined elegance—where French-inspired interiors meet modern luxury. A home of rare beauty, it offers an enchanting blend of sophistication and warmth. Step inside to an elegant staircase, soaring ceilings and expansive windows, reminiscent of classic European architecture.

The breathtaking living and dining space radiates timeless grace, with coffered ceilings and a striking fireplace that anchors the room and adds warmth and sophistication. At the rear, a sunlit family room and timeless chef's kitchen open onto an expansive south-facing garden—an idyllic private oasis bathed in natural light. A private elevator provides seamless access to all levels, ensuring both convenience and luxury.

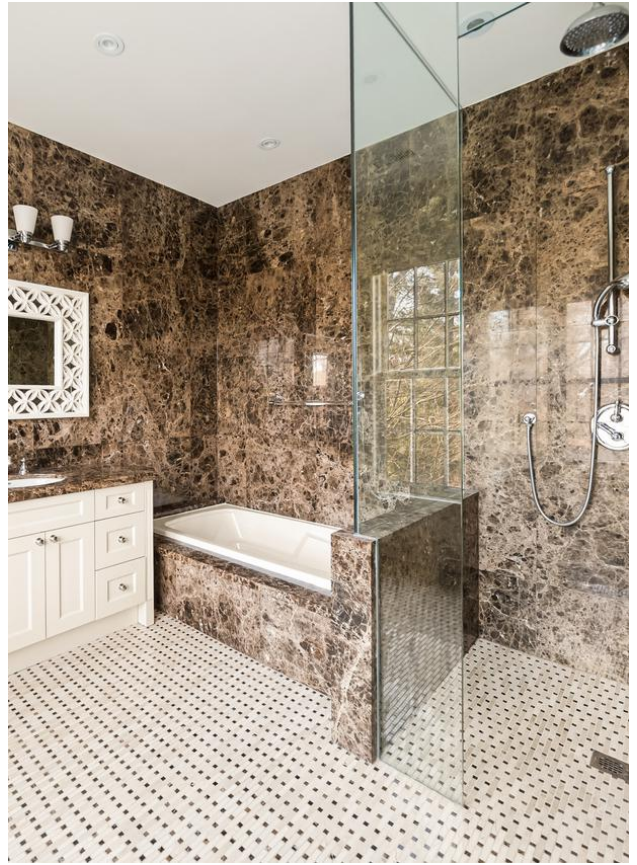
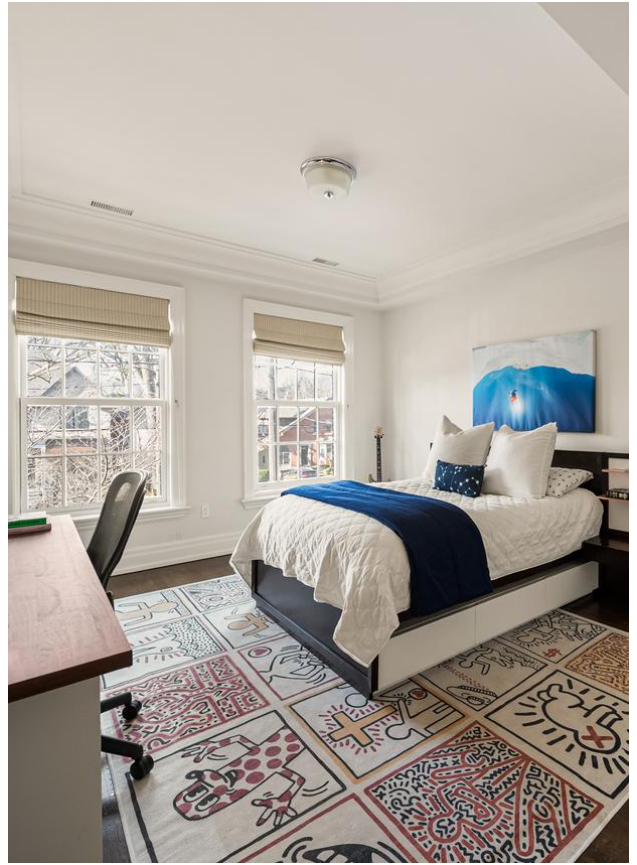
The second floor hosts three generously sized bedrooms, including a serene suite with its own private ensuite bathroom and walk-in closet. The remaining two share a beautifully appointed family bathroom that features a WC for added privacy. Ascend to the third level to discover an extraordinary primary retreat, complete with a spacious seating area, a romantic fireplace, an incredible custom closet and an ethereal, spa-like en suite bathroom. A private office offers a quiet sanctuary for work or reflection, and may also be converted to function as a delightful nursery.

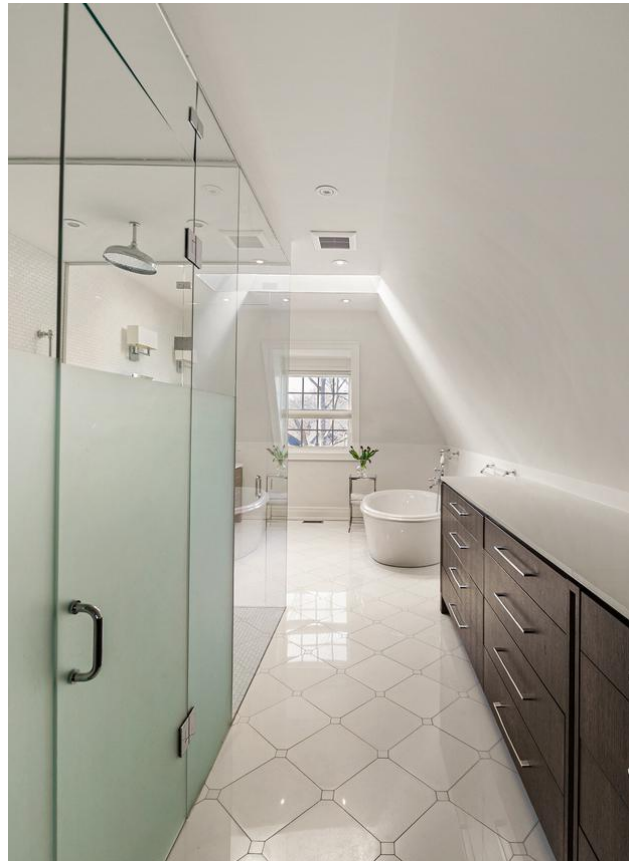
The fully finished lower level is a world unto itself, featuring a recreation room with ample space to accommodate a gym, a wine cellar, ample storage, a walk out to the backyard and a full family bathroom. A fireplace and walkout enhance the space, creating a warm and inviting atmosphere. The lower level also offers a private caregiver suite, complete with its own dedicated full bathroom.

Walking distance to some of the city's most coveted public schools and in close proximity to its top private schools, this home is ideally situated for families. With an easy drive downtown and quick access to major highways, it offers both tranquility and convenience in one of Toronto's most prestigious neighborhoods. A rare offering—a family home that is as grand as it is inviting, where beauty and function exist in perfect harmony.













KEY FEATURES

- Lot 37.50 by 144.75 feet
- Living room has coffered ceiling
- Sound system in primary, kitchen, living room, lower level and living area
- Walk in front closet in the foyer
- Oversized kitchen island with electrical power
- Heated floors in the lower level
- Walk in front closet in the foyer
- Heated floors in some of the washrooms
- Fireplace in the primary, living and rec room
- Primary has a walkout balcony
- Skylight on the landing at the 3rd floor (frosted glass)
- Elevator access to all floors
- Crown moulding throughout
- Central vacuum throughout
- Wainscotting on stairs throughout
- Cold cellar in the lower level
- Storage underneath the stairs in lower level
- Walk-in climatized wine cellar in lower level
- Wet bar in lower level
- Basement walk out to back yard
- Water filtration system

INCLUSIONS

- LoreAll existing appliances
- Miele dishwasher
- Wolf double oven with 6 gas burner tops
- Best hood range
- Miele built in microwave and coffee maker
- LG washer and dryer
- EV Charger in Front Driveway

EXCLUSIONS

- None

RENTAL ITEMS

- Hot Water Tank (\$51.11/M)

HEATING

- 2 x Gas, Forced Air (2011)
- 2 x Central Air Conditioning Units (2011)

POSSESSION

- TBD

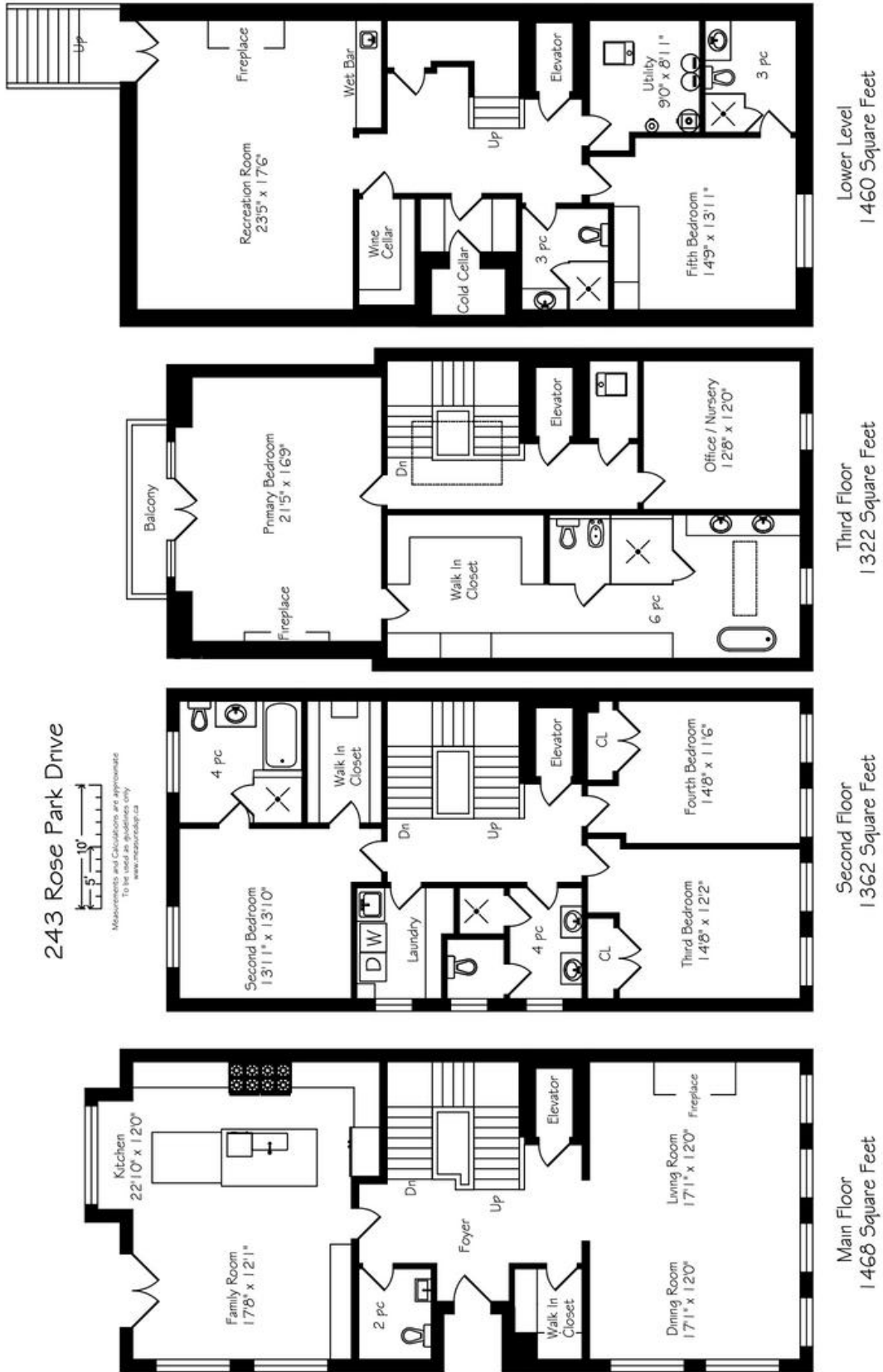
TAXES

- \$ 22,860.64 (2024)

OFFERED FOR SALE AT

- \$ 6,995,000

243 ROSE PARK DRIVE





ELEVATE YOUR EXPECTATIONS



Jeannine Volpe
Real Estate Agent
416.573.6777
jeannine@heapsestrin.com



For Royal LePage Real Estate Services Heaps Estrin Team, Brokerage. All information and statements contained herein, provided by Royal LePage Real Estate Services Heaps Estrin Team, Brokerage regarding property for sale, rental or financing is from sources deemed reliable and assumed correct, but no warranty or representation is made as to the accuracy thereof and same is submitted subject to errors, omissions, changes in price, rental or other conditions, prior sale or withdrawal without notice.

Royal LePage Real Estate Services Heaps Estrin Team, Brokerage Independently Owned and Operated