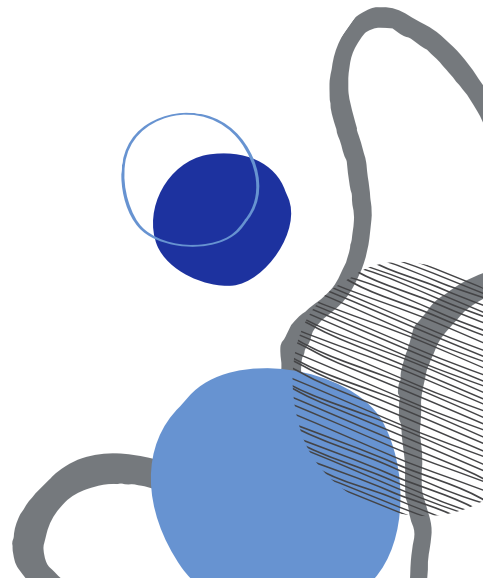
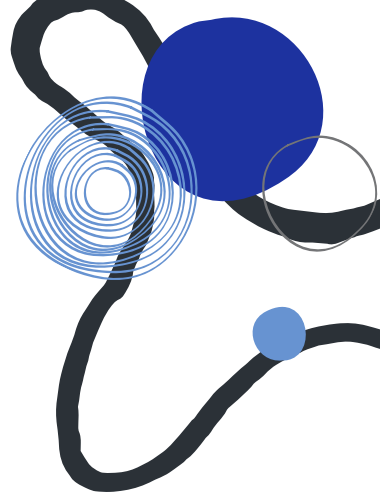




BOLTON
SCHOOL
PRIMARY DIVISION

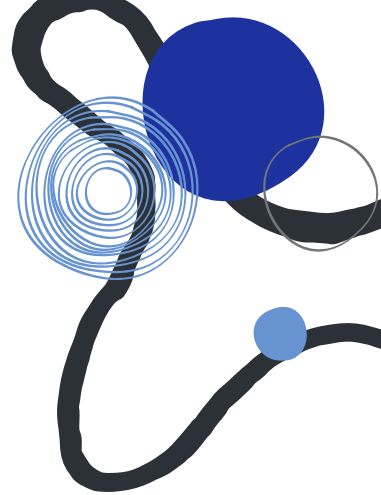
THE FOURTH HULTON LECTURE

Tuesday 5 May 2026, 5pm
Girls' Division Great Hall





BOLTON
SCHOOL
PRIMARY DIVISION



PROGRAMME

WELCOME

Mrs Sue Faulkner, Head of Primary Division

INTRODUCTION

Naya Patel, Year 6, Hesketh House

THE FOURTH HULTON LECTURE

Megan Bowden (Class of 2011)

VOTE OF THANKS

Ayaan Raza, Year 6, Park Road



THE FOURTH HULTON LECTURE



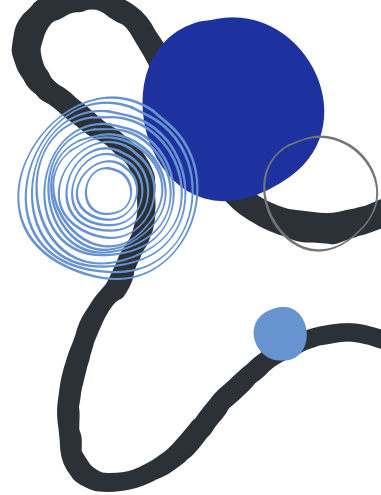
PRESENTED BY OUR KEYNOTE SPEAKER, MEGAN BOWDEN

Megan is a commercial pilot, flying Boeing 737s for a living. Previously, she has worked as a ferry pilot, a safety pilot, and in flight operations and press management for two successive world record global circumnavigations.

Alongside flying duties, Megan works in recruitment as a Pilot Assessor. She also flies vintage aircraft for fun, and is working towards her flight instructor rating and an MSc in Human Factors in Aviation. Megan's favourite thing about flying is that it changes how you see and navigate the world, giving a wonderful change in perspective. She is constantly inspired by the passion and tenacity of those she meets in the industry, and hopes to inspire more young people to pursue careers in aviation.



BOLTON
SCHOOL
PRIMARY DIVISION



HULTON LECTURE

The Hulton Lecture is named in recognition of the Hulton Charity Trust, whose links with education in Bolton can be traced back to the 17th Century.

The trust was inspired by Nathaniel Hulton's desire to promote religion, learning and charity and whilst the school no longer holds the religious affiliations of the past, learning and charity remain at the heart of all that we do at Bolton School.

The original Beech House was the home of one of the Hulton Trustees, Ralph Haslam, and later purchased by the School to be used first as the home of the Boys' Junior School and then later as the Infant School.

There were Hulton Scholarships to University in Boys' Division and a Hulton Lecture in Girls' Division for many years. This link with Girls' Division is also rooted in the fact the Hulton Trust was involved in the construction of the original Bank Street Chapel, in 1696, and it was members of that congregation who inspired the creation of the original Bolton High School for Girls.

The connection between the Hulton Trust and Bolton School is probably unique in the School's history, apart from the link with the Leverhulme family and so it is fitting that it is recognised through the Primary Division's Lecture.