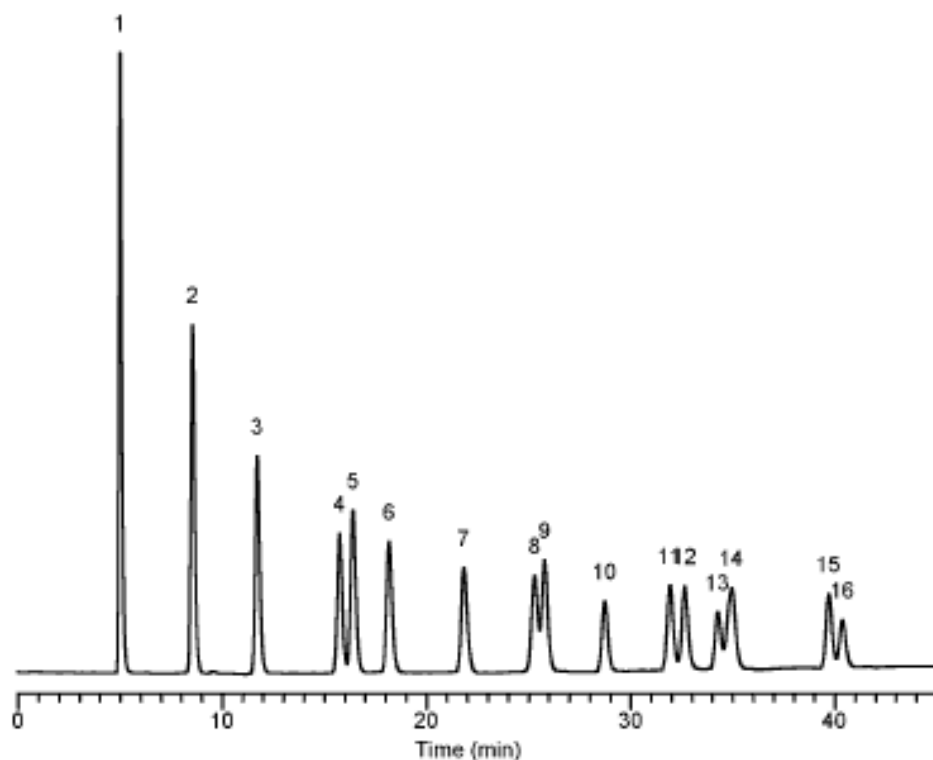


Analysis of DNPH-Aldehydes

Data No. LA320-0000



Column	: Inertsil C4 5µm 150 × 4.6 mmI.D.	Solutes	: 1. DNPH 2. DNPH-Formaldehyde (30ug/mL) 3. DNPH-Acetaldehyde (30ug/mL) 4. DNPH-Acetone (30ug/mL) 5. DNPH-Acrolein (30ug/mL) 6. DNPH-Propionaldehyde (30ug/mL) 7. DNPH-Crotonaldehyde (30ug/mL) 8. DNPH-n-Butyraldehyde (30ug/mL) 9. DNPH-iso-Butyraldehyde (30ug/mL) 10. DNPH-Benzaldehyde (30ug/mL) 11. DNPH-iso-Valeraldehyde (30ug/mL) 12. DNPH-n-Valeraldehyde (30ug/mL) 13. DNPH-o-Tolualdehyde (30ug/mL) 14. DNPH-m,p-Tolualdehyde (each 30ug/mL) 15. DNPH-Hexanaldehyde (30ug/mL) 16. DNPH-2,5-Dimethylbenzaldehyde (30ug/mL)
Column Cat. No.	: 5020-01401		
Eluent	: A) CH ₃ OH/Ethyl acetate/H ₂ O = 37/3/60 B) CH ₃ OH A/B = 100/0 - 40min - 60/40		
Flow rate	: 1.0 mL/min.		
Col. Temp.	: 40°C		
Detection	: UV 360 nm		
Injection Vol.	: 1µL		
Sample	:		