



# Travel Planning

## FOR SEYCHELLES

*This document offers useful information on travel to Seychelles, health planning advice & what to pack.*



# About SEYCHELLES

Seychelles, an archipelago of 115 islands in the Indian Ocean, is a slice of paradise known for its exquisite beaches, crystal-clear waters, and rich biodiversity. Located northeast of Madagascar and about 1,600 kilometers east of mainland Africa, it is a sanctuary of luxury tourism, vibrant Creole culture, and natural beauty. The islands are famed for their unique granite rock formations, lush tropical forests, and diverse marine life. Victoria, the capital on Mahé island, offers a glimpse into the nation's heritage and relaxed lifestyle. Seychelles' economy is driven by tourism, fishing, and small-scale manufacturing. A haven for eco-tourism, it attracts travellers with its coral reefs, nature reserves, and rare wildlife, offering a tranquil retreat for those seeking unspoiled natural beauty and serenity.







## CURRENCY

The currency in Seychelles is the Seychelles Rupee (SCR). United States Dollar, Euro, British Pound and South African Rand can be exchanged at most forex outlets and major banks across Seychelles.

## BANKS

Banking hours are generally Monday-Friday 08h00 to 14h00 and Saturday 08h00 to 11h00.

There are automated teller machines (ATMs) facilities at major banks on Mahe, Praslin and La Digue and at the airport on Mahe and Praslin. Please note that these provide cash in local currency.

## CREDIT CARDS

Mastercard and Visa Cards are widely accepted throughout the country, whereas American Express and Diners Club are accepted at selected hotels.

## LANGUAGE

The official languages are English, French and Seychellois Creole. Most visitors get by on English as it is predominant, and French speakers will have no problem speaking French to most locals or even understanding some Creole.







## CLIMATE

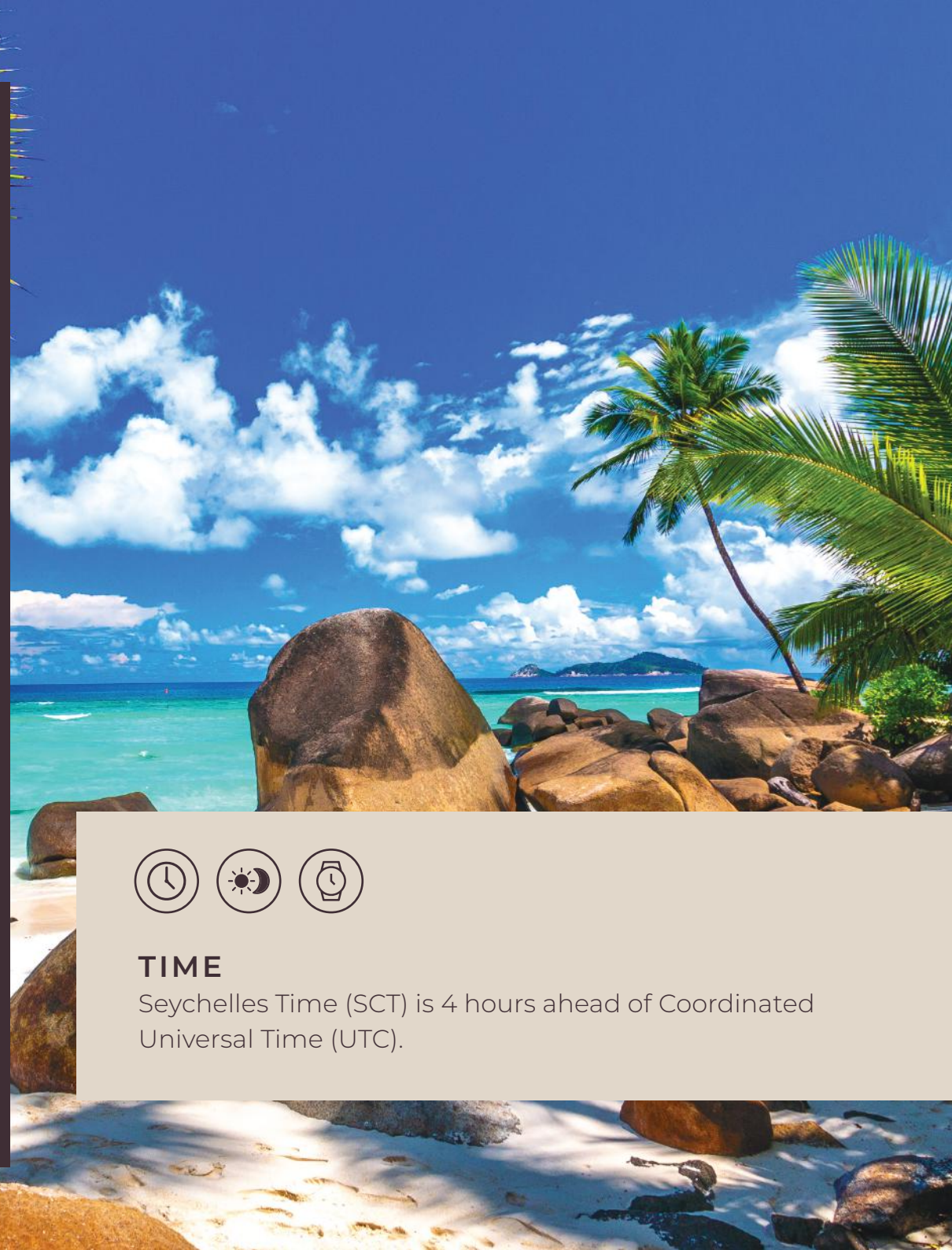
Seychelles is out of the cyclone belt and enjoys a stable weather system, and dangerous weather conditions are extremely rare. Temperatures remain constant and range between 24- and 31-degrees Celsius year round (75 and 89 degrees Fahrenheit). The Archipelago is affected by two main weather systems – the Southeast Monsoon / Trade-Winds and the North-West Monsoon / Trade-Winds.

### *The North-West Monsoon – From December to April*

This time of year is generally wetter and hotter than the remaining months, but still just as pleasant for a trip to Seychelles. As a rule, the south – eastern parts of any of the islands will enjoy calmer seas than those affected by the north-westerly winds. This is something to consider when booking your accommodation.

### *The Southeast Monsoon – From May to November*

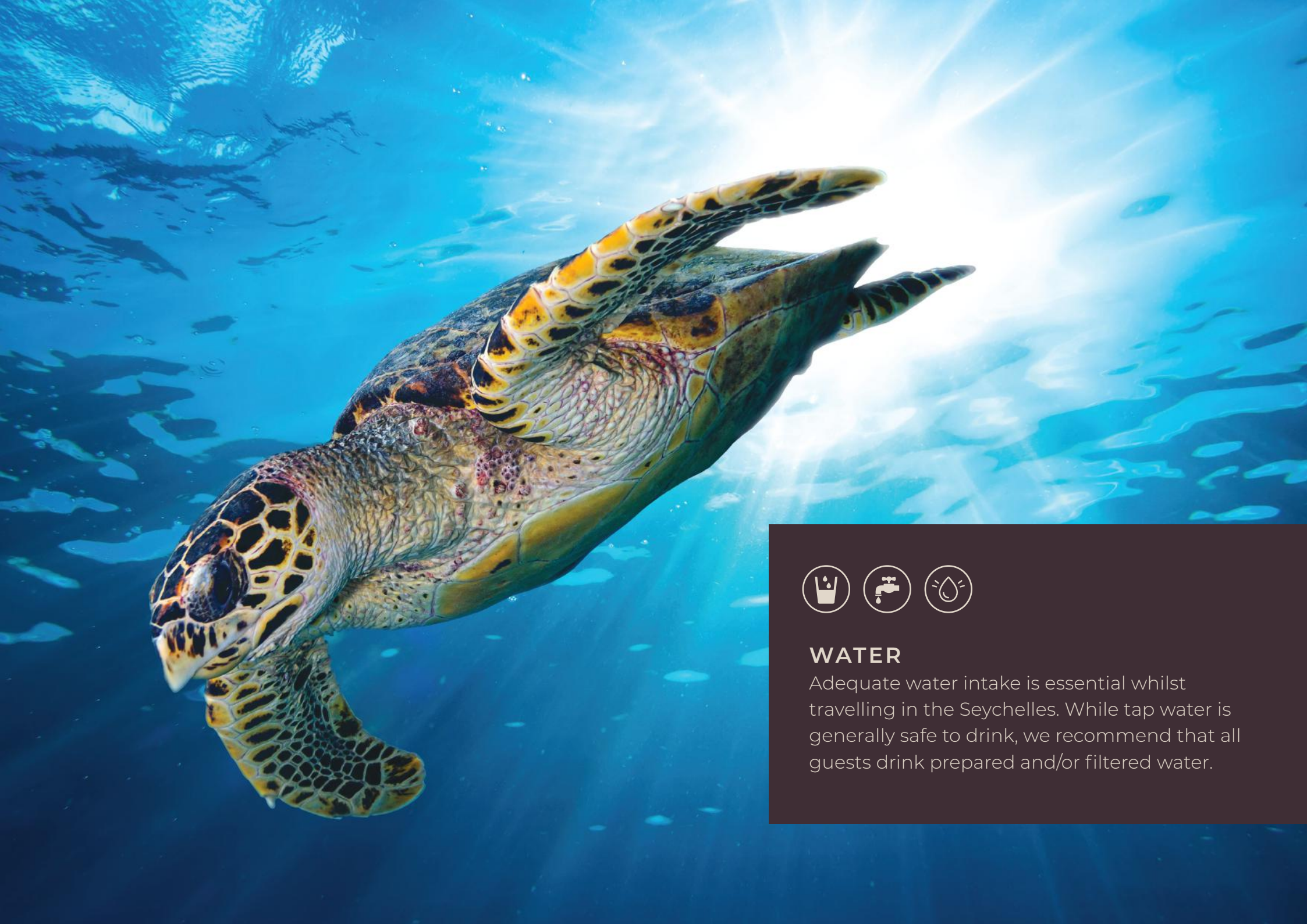
During this time, temperatures are cooler and there is less rainfall. As a rule, the north-western parts of any of the islands will enjoy calmer seas than those affected by the south-easterly winds. This is something to consider when booking your accommodation.



## TIME

Seychelles Time (SCT) is 4 hours ahead of Coordinated Universal Time (UTC).





## **WATER**

Adequate water intake is essential whilst travelling in the Seychelles. While tap water is generally safe to drink, we recommend that all guests drink prepared and/or filtered water.





## LUGGAGE LIMITATIONS ON SCHEDULED LIGHT AIRCRAFT TRANSFERS

There are strict luggage weight restrictions for all scheduled light aircraft transfers. These restrictions are as follows:

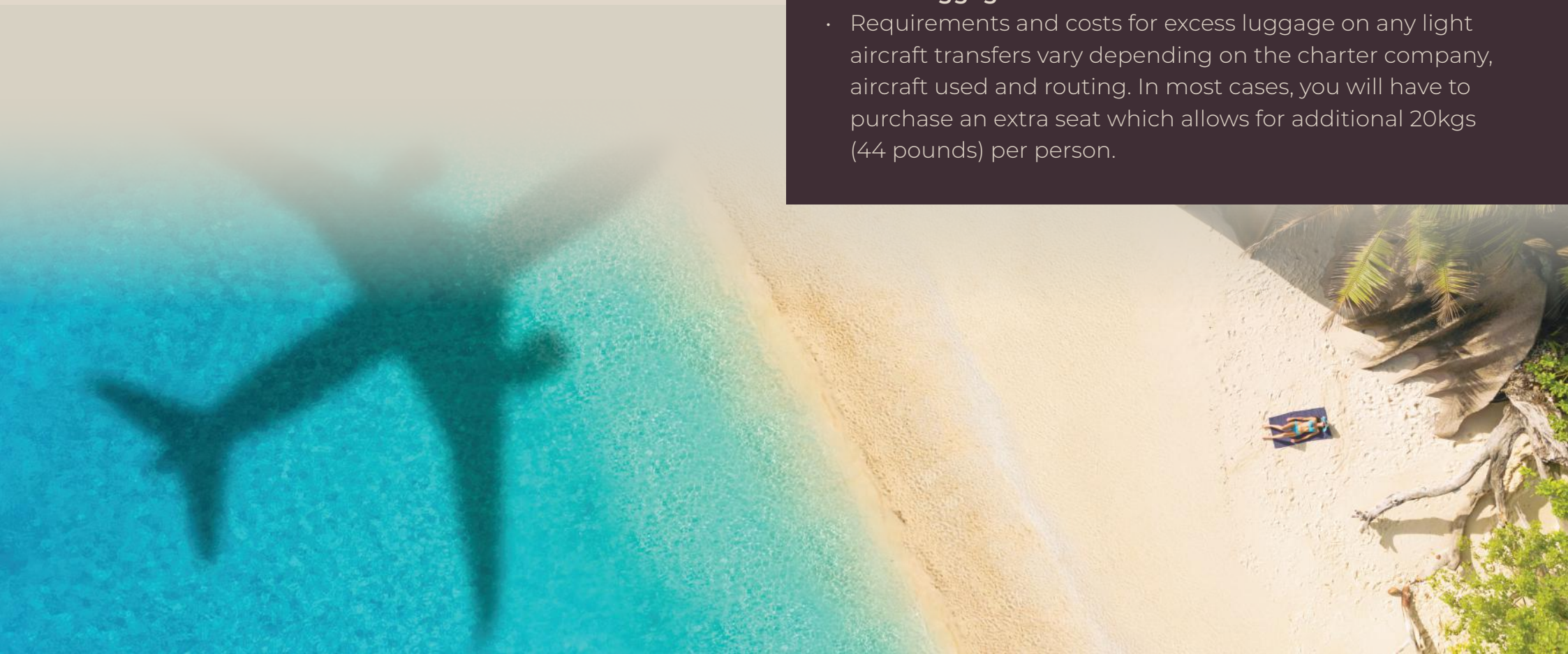
- Camera & Hand Luggage per person is restricted to 5kgs (11 pounds).
- Only Soft-sided bags will be accepted.
- Suitcases, bags with wheels, frames or hard sides will not be permitted on scheduled light aircraft flights.

### Maximum dimensions Soft-sided bags which can be accommodated are as follows:

- 25cm (10 inches) wide x 30cm (12 inches) high and 62cm (24 inches) long.
- Please remember that baggage compartments on light aircraft are only 25cm high (10 inches), so the pilots must be able to manipulate the bag into the compartment.
- A collapsible wheeled luggage frame/trolley (separate from the bag) is allowed as long as the basic dimensions are similar to the bag.

### Excess Luggage:

- Requirements and costs for excess luggage on any light aircraft transfers vary depending on the charter company, aircraft used and routing. In most cases, you will have to purchase an extra seat which allows for additional 20kgs (44 pounds) per person.





## PASSENGER LIMITATIONS ON SCHEDULED LIGHT AIRCRAFT TRANSFERS

- Besides luggage allowances, light aircraft are designed to carry a specific maximum body weight.
- Many of these airfields are also located in tropical regions, therefore, the permissible aircraft carrying capacity is further reduced.
- Please inform us in advance if guests weigh more than 100kg (220 pounds), as additional weight allowance on the aircraft must be purchased for safety and comfort.
- The costs for this are calculated on request, according to specific region and routing, and provide for a maximum of 70kg (154 pounds) excess weight per passenger.
- These limits apply to guests travelling on a seat rate, scheduled light aircraft transfer basis.
- This requirement may differ if guests have booked sole use of an aircraft or private charter option, in which case the maximum passenger weights will depend on the type of aircraft and the number of passengers booked.

---

***“Palm trees, ocean breeze, and Seychelles please.”***



## TRAVEL INSURANCE

- Fully Comprehensive Travel Insurance Cover, including Comprehensive Medical Cover, is essential and must be purchased before travelling.
- Comprehensive Insurance Cover can be extended to cover loss of luggage, personal items, and trip cancellations.
- Depending on your country of origin, a separate Comprehensive Medical Travel Insurance policy may be required, over and above your Fully Comprehensive Travel Insurance policy.
- Please ensure you have these Insurance Documents with you at all times during your trip.





## **PASSPORT AND VISA REQUIREMENTS, INCLUDING TRAVELLING WITH CHILDREN**

- Seychelles is a visa-free country, which means that there are no visa requirements for any persons wishing to travel to Seychelles.
- A visitors Permit for ALL visitors, including children is issued upon arrival provided you have the following documents:
  - Valid passport/Travel Document
  - Valid return/onward ticket
  - Confirmed accommodation.
  - Sufficient funds to maintain yourself during your stay in the country.
- A Travel Authorisation (TA) is required for every passenger, including children entering Seychelles. For further information please visit: [seychelles.govtas.com](https://seychelles.govtas.com).
- Visitors to Seychelles must possess a passport valid for at least six months from the date of travel and have at least three blank pages available in their passport.
- It is advisable for visitors who intend to travel to neighbouring Southern African and/or additional African countries to also have sufficient passport pages in place and, where applicable, apply for multiple entry visas.

**For all requirements, including the entire application process and costs, please contact your local Seychelles Embassy, Consulate, or other Seychelles Representative Office for further details.**

- Seychelles has introduced a new environmental levy, now applicable to all visitors. The fee is payable directly at your hotel in Seychelles Rupees (SCR) and will contribute to the country's ongoing conservation and sustainability efforts.
- All travellers are required to complete an online Travel Authorisation form at least 24 hours prior to departure for Seychelles. Please visit [seychelles.govtas.com](https://seychelles.govtas.com) to submit your application.







## HEALTH REQUIREMENTS

The Seychelles is currently free from any tropical diseases and no vaccinations are required. Malaria protection is not required. If you are entering the Seychelles from or have passed through a Yellow Fever infected country, a certificate of immunisation is required.

**For further information on any health requirements please visit:**  
<http://www.health.gov.sc/>



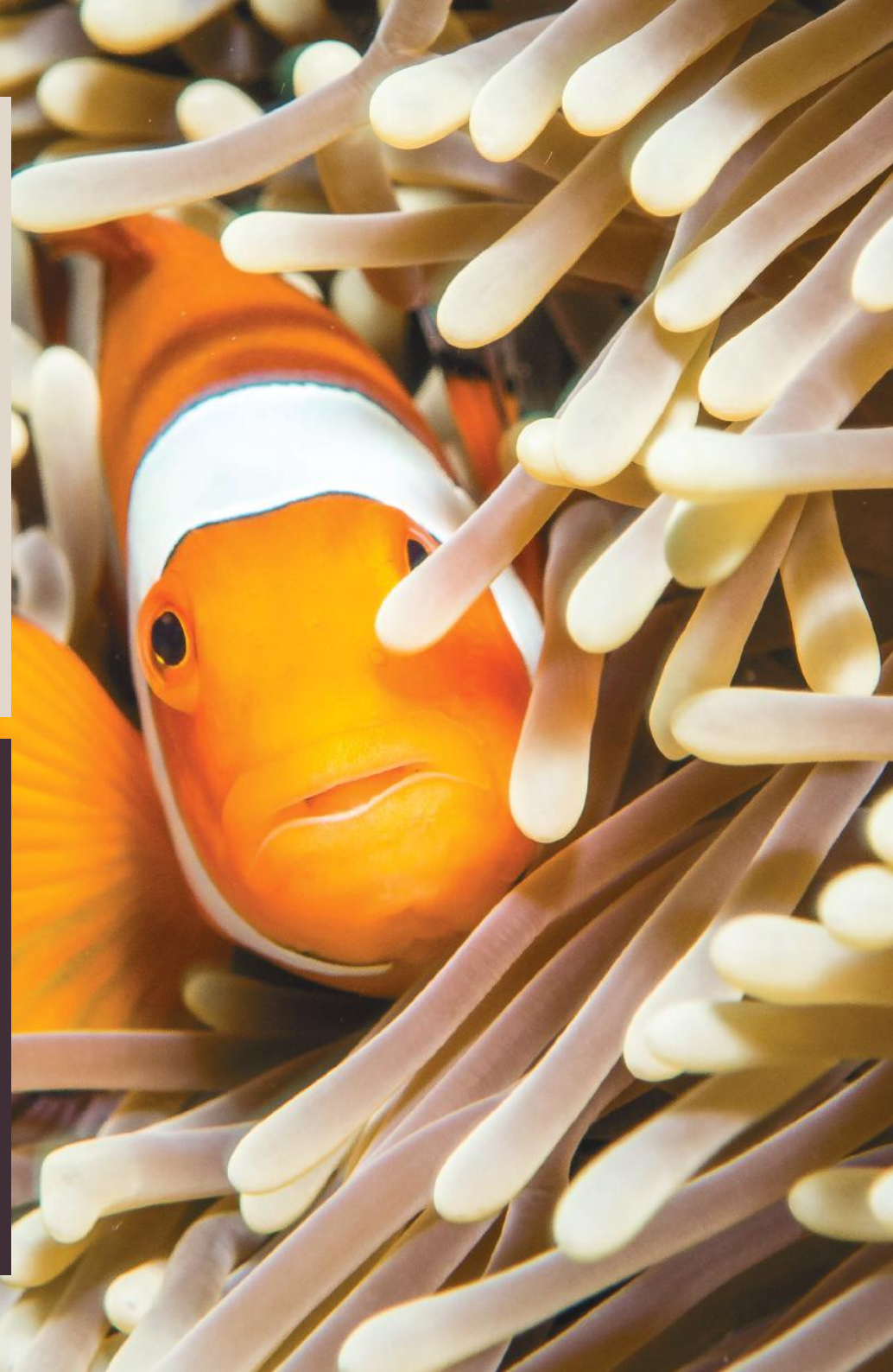


## PHOTOGRAPHY

Please be mindful of others when taking photographs at all times. Should you wish to photograph local people, particularly children, please be courteous and ask permission before taking pictures. Some local people do not want to be photographed for cultural reasons. Photography is not permitted at certain locations, including government buildings, museums, art galleries, private houses, etc., these areas are usually clearly marked. If in doubt, please ask, otherwise, camera equipment can be confiscated.

## SHOPPING

Those who go to the Seychelles expecting large shopping avenues and centres might be disappointed. Victoria, the small capital of the Seychelles, offers a few shops that are worth exploring, while Eden Island has a small shopping centre to offer, but besides that there isn't much on offer. Locals tend to shop at the Sir Selwyn Clarke market (Mon - Sat: 10:00 - 18:00) in Victoria. If you are looking for souvenirs, here you can find a large selection of jewellery, spices, woodwork, and much more. The market is also a great place to meet on Saturdays to see the Seychellois go about their daily business.







## POWER SUPPLY

On all Seychelles islands, they use 220/240 volts AC and the British three-pin socket type (13 amps). Anyone not travelling from a country that uses this socket type (UK, Ireland, Hong Kong and others), should buy an adaptor in advance. It is also recommended that you bring a multi-socket adaptor from home to charge several devices at once.





## SUGGESTED PACKING LIST

### CLOTHING

- Sun hat
- Light and comfortable clothing: shorts, t-shirts, tank-tops, summer clothes etc.
- Long-sleeved cotton shirts
- Shorts and/or skirts
- Long trousers/slacks
- Comfortable walking shoes such as trainers, tennis shoes or similar sports shoes
- Flip-flops and sandals
- Water shoes
- Backpack or beach bag
- Snorkelling equipment
- Swimming costume
- Light weight jersey/ jumper for the evenings
- Light rain gear or waterproof jacket
- Formal attire for evening meals in luxury hotels or resorts.



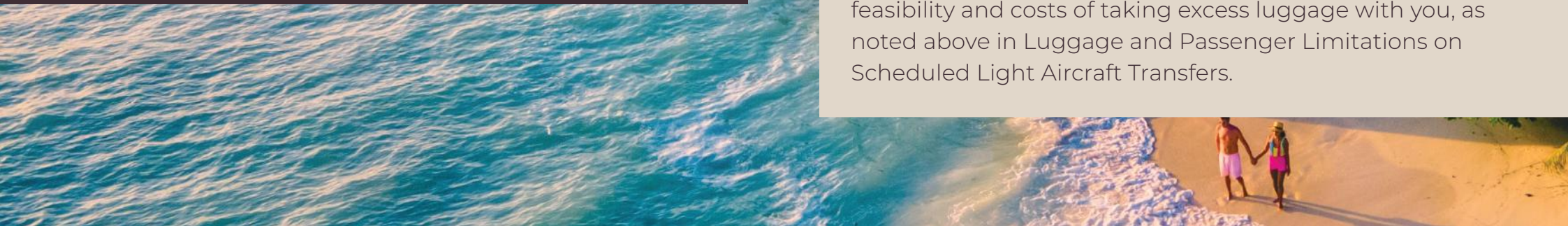


## EQUIPMENT/OTHER

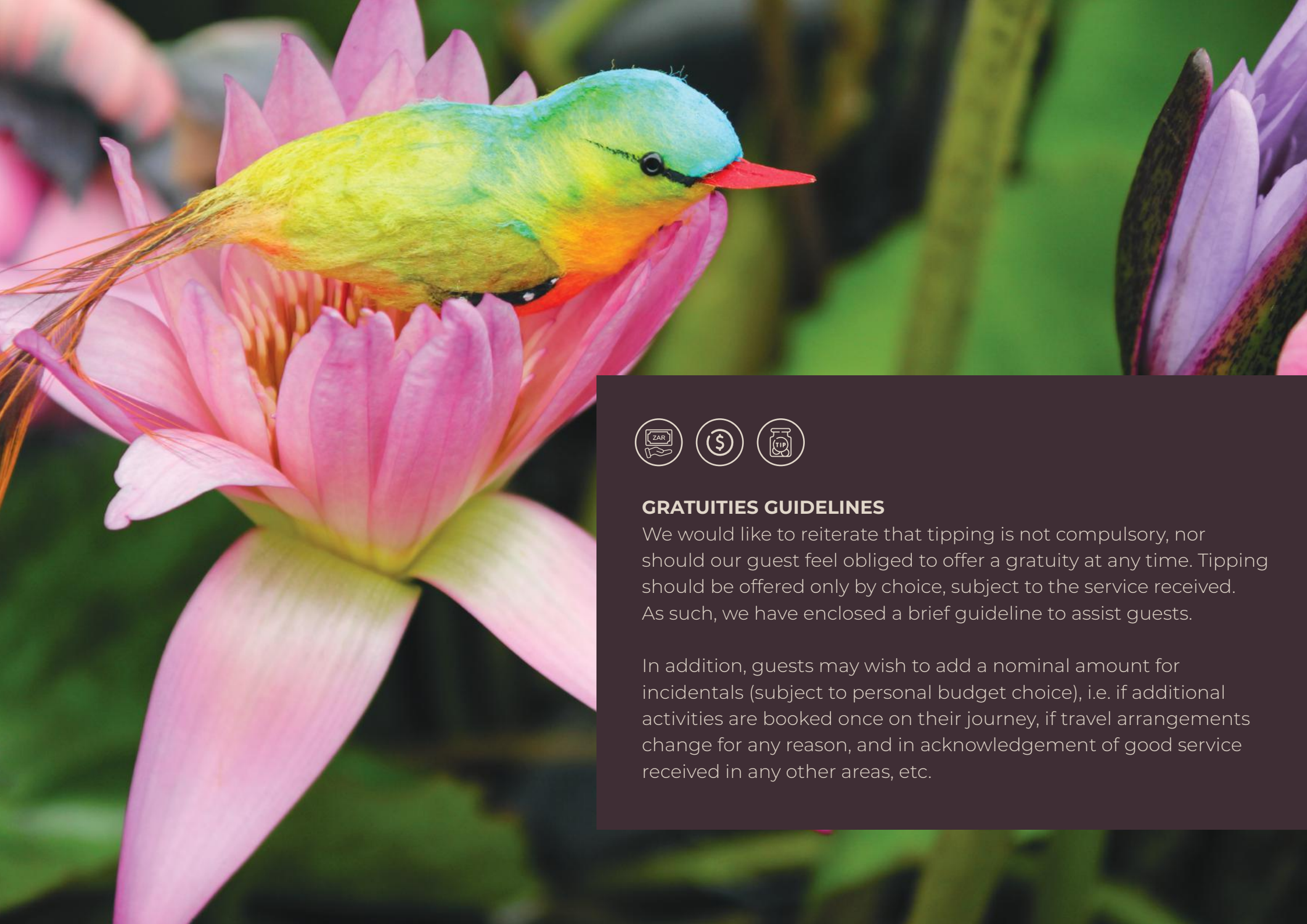
- Good quality sunglasses with UV protection – preferably polarised
- Personal toiletries
- Moisturising cream and suntan lotion – SPF 50 recommended
- Insect repellent for topical application
- Torch or headlight for bike riding on La Digue
- Travel guide
- Charger cables for your phone and camera
- Power bank and headphones
- Camera equipment, including spare batteries, chargers, film, memory cards, memory sticks, etc.
- Converter plugs to 220/240 volts AC and the British three-pin socket type (13 amps) as detailed in the section on power supply above.
- Waterproof/dustproof bag or cover for your camera.
- An adequate supply of all prescription medications and/or other medicines required for the duration of your trip.
- Visas, tickets, passports, money, credit cards, insurance documents, etc.



**PLEASE NOTE:** There may be a restriction on luggage limits on your journey – please ensure that you have the details from your agent according to your itinerary. Please ask your agent ahead of time if you would like details on the feasibility and costs of taking excess luggage with you, as noted above in Luggage and Passenger Limitations on Scheduled Light Aircraft Transfers.







### **GRATUITIES GUIDELINES**

We would like to reiterate that tipping is not compulsory, nor should our guest feel obliged to offer a gratuity at any time. Tipping should be offered only by choice, subject to the service received. As such, we have enclosed a brief guideline to assist guests.

In addition, guests may wish to add a nominal amount for incidentals (subject to personal budget choice), i.e. if additional activities are booked once on their journey, if travel arrangements change for any reason, and in acknowledgement of good service received in any other areas, etc.





## EURO GRATUITIES GUIDELINE

### SERVICE

Meet & Greet

Airport Transfer Driver

Hotel / Airport Porters

Guides for City Sightseeing (Half Day)

Guides for City Sightseeing (Full Day)

Local Safari Guides at camps/lodges

Local Safari Trackers at camps/lodges

Housekeepers

General staff at camps/lodges

*- Gratuities are then shared among the general staff*

Meals at Restaurants, incl Room Services **10-15%** \*Unless already included

### OUR RECOMMENDATION

**EUR 5** per person, per Meet & Greet

**EUR 10** per person, per transfer

**EUR 2** per person per bag movement

**EUR 10** per person per Half Day

**EUR 20** per person per Full Day

**EUR 20** per person per day

**EUR 15** per person per day

**EUR 5** per person per night

**EUR 15** per person per day





