

2025 Annual report



Letter from John List and Julio Elías.

We are pleased to share with you the 2025 Annual Report of the Joint Initiative for Latin American Experimental Economics (JILAEE), a partnership between the University of Chicago and Universidad del CEMA created in 2018 to advance experimental and behavioral economics research in Latin America.

Throughout 2025, JILAEE continued to grow as a platform for research, collaboration, and training. Our researchers produced new publications, advanced projects on discrimination, citizen participation and trust in the police, education, gender gaps, labor markets, and redistribution, and expanded collaborations with scholars from universities around the world.

During the year, we hosted visiting scholars from institutions including University College Dublin, Northwestern University, UCLA, and California Polytechnic State University, while JILAEE researchers presented their work at international conferences and seminars across Europe, Asia, Latin America, and the United States.

We are also especially proud of the work carried out by our research assistants and predoctoral researchers. Their contributions were central to multiple field projects, data collection efforts, replications, programming tasks, and empirical analyses. An important part of JILAEE's mission is to train the next generation of economists working at the frontier of experimental and behavioral economics, and this year's report reflects the impact of that effort.

Another important milestone during 2025 was the continued consolidation of our Visiting Fellows Program and seminar series, which have helped strengthen intellectual exchange and research collaboration within the broader experimental economics community. Our hybrid seminars, together with informal discussions and lunches, remains a distinctive feature of JILAEE's research environment.

Looking ahead to 2026, we are excited to continue expanding JILAEE's educational and research activities. In November 2026, we will offer the Chicago School of Experimental Economics at Universidad del CEMA. Immediately afterward, we will jointly organize a Workshop in Behavioral and Experimental Economics together with Universidad Torcuato Di Tella. We hope these initiatives will further strengthen the experimental economics community in Latin America and create new opportunities for collaboration among researchers and students in the region.

We remain deeply grateful to our researchers, students, visitors, collaborators, and supporters for helping make JILAEE a vibrant research community.

John List & Julio Elías

About the initiative

The Joint Initiative for Latin American Experimental Economics (JILAEE) was created at the end of 2018 as a partnership between the University of Chicago and Universidad del CEMA. The main objective of the Initiative is to design field experiments with the distinctive approach of Chicago Economics to offer new perspectives in various areas of economic research for Latin American countries, including early childhood development, education, private provision of public goods, social preferences, and environmental economics.

To carry out its mission of developing the area of experimental economics in Latin America JILAEE has embarked on a program of outreach, education, and research, offering courses, seminars, and workshops to UCEMA and Latin American students. The Initiative prepares and supports innovative scholars who apply economic analysis, through field experiments, to our most challenging social and political problems.

JILAEE is based at UCEMA (building Av. Córdoba 637, 3rd floor) and also operates at the Kenneth C. Griffin Department of Economics of the University of Chicago under the Experimental Group of John List.



TABLE OF CONTENTS

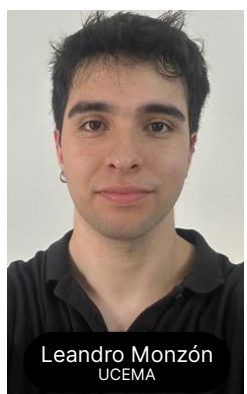
- 1 About JILAEE and it's Team
- 6 Visitors
- 8 Scientific publications and working papers
- 10 In progress projects
- 13 Collaboration from JILAEE's RAs
- 19 In-progress projects outside JILAEE
- 22 Seminars and conference presentations given by JILAEE researchers during 2025.
- 24 Other professional activities
- 25 Affiliated researchers that started projects using resources from JILAEE
- 28 JiLAEE Online & on site seminars

Directors team



The Initiative is directed by John A. List, Professor of Economics at the University of Chicago, and Julio Elías, Professor of Economics at Universidad del CEMA. Melissa De Vries is John List's Senior Administrator - BFI based in Chicago and Carolina Bayón Echenique is our Managing Director based in Buenos Aires. Julia Seither (Assistant Professor, Universidad del Rosario) and Karen Ye (Assistant Professor, Queen's University) and Gwen-Jiro Clochard (Assistant Professor, University of Osaka) and Luca Henkel (Assistant Professor of Finance (tenure-track) at the Erasmus University Rotterdam) are Directors. Jared Gars (Assistant Professor at FRED) is JILAE's Director of Partnerships. Every year we hire a Post doctoral Scholar that spends 8 months in Buenos Aires and 4 at Chicago, this period's Posdoc is Bea Ahumada and she will join the Budapest University of Technology and Economics (BME) as a postdoctoral researcher starting in Fall 2026.

RA team



We also have a team of 12 Research Assistants (RAs). Some of them are based in Buenos Aires and are from Universidad del CEMA, and some of them are from Queen's University, Canada, and some come from John List's team based at the University of Chicago. During 2024 we hired our first Predoctoral Research Professional (former JILAE RA) and now we hired Marco di Giacomo also former RA and graduated from UCEMA.

Affiliated



Jesse Backstrom
Assistant Professor at Texas State University



Andy Brownback
Associate professor of economics, University of Arkansas



Tabaré Capitán
Post Doc at Swedish University of Agricultural Sciences



Anujit Chakraborty
Assistant Professor of Economics at UC Davis



Jeffrey Flory
Associate Professor of Economics, Claremont McKenna College



Andrés Gago
Assistant Professor at Universidad Torcuato Di Tella Business School



Camila Galindo
Assistant Professor of Economics, Universidad de los Andes.



Sebastián Gallegos
Assistant Professor of Economics at the UAI Business School, Chile.



Jana Gallus
Associate Professor (with tenure) UCLA Anderson Strategy and Behavioral Decision Making



Ana García-Hernandez
Senior Policy and Research Manager J-PAL Europe



Carlos Gómez González
Senior Lecturer at University of Lausanne



Justin Holz
Assistant Professor at the Ford School of Public Policy at the University of Michigan



Brian Jabarian
Howard and Nancy Marks Principal Researcher at the University of Chicago Booth School of Business.

From the University of Chicago, several researchers work with us, including Dr. Dana Suskind, Professor at UChicago Medical Center, Founder.

Researchers



Daniel Lema
Professor of Economics, Universidad del CEMA and INTA



Diego Mariño Fages
Assistant Professor at Durham University



Catherine Michaud-Leclerc
Assistant Professor in the department of Economics at Laval University



Julie Pernaudet
Senior Research Associate, University of Chicago



Giovanni Ponti
Professor of Economics, University of Alicante



Lina Ramirez
Predoctoral Research Professional on the Chicago Experiments Initiative, University of Chicago



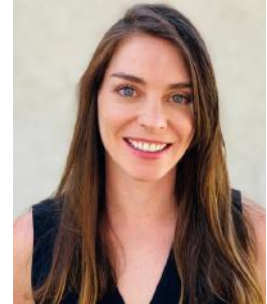
Germán Reyes
Assistant Professor in the Economics Department at Middlebury College



Matthias Roddemeier
Assistant Professor, Bocconi. Research Scholar, UChicago. Research Affiliate, IZA, IGIER, BAFFI CAREFIN, JILAE



Sally Sadoff
Associate Professor Economics and Strategic Management Rady School of Management, UC San Diego



Jessica Londeree Saleska
Postdoctoral Scholar, University of California - Los Angeles



Egon Tripodi
Assistant Professor of Economics at the Hertie School



Alejandro Zentner
Professor of Economics, University of Texas, Dallas



Diogo Gearaldes
Assistant Professor (Above the Bar) University College Dublin



JILAE researchers are based at universities and research institutes worldwide and contribute to JILAE's mission with their expertise and research capacities.

JILAEF's visitors

During 2021 JILAEF created the Visiting Fellows Program inviting scholars and researchers around the world to visit us in Buenos Aires and investigate topics in behavioral and experimental economics. We prioritize researchers whose work is related to the work of JILAEF's researchers, those who would like to collaborate with some of our research partners, and also, those who are generally interested in experimental research in Latin America. These research projects, and the work conducted by visiting fellows, represent an important component of JILAEF's mission to use insights from behavioral and experimental economics to reduce inequality and promote economic betterment in Latin America. Visiting fellows receive an allowance for travel, living and housing expenses. They have their own desk at the offices of JILAEF in UCEMA, and they join JILAEF such as seminars, team meetings and social activities.

This program also attracted many visitors who came to Buenos Aires by their own means.

During 2025 we successfully continued with on site seminars followed by lunch where the discussions and other researcher's contributions continue.



along 2025

- March 11 to May 18: Diogo Geraldes (University College Dublin)
- August 18 to September 12 Danila Medvedev (Northwestern University Kellogg School of Management)
- August 19: Ricardo Pérez-Truglia (UCLA)
- November 7th: Visit from Tuck School of Business at Dartmouth: talk with Diana Mondino
- November 12 to December 17: Kathryn Vasilaky (California Polytechnic State University)



Scientific publications



- Roland Bénabou, Luca Henkel. **Identity as Self-Image**
- Brian Jabarian, Luca Henkel. **Voice AI in Firms: A Natural Field Experiment on Automated Job Interviews**
- Armin Falk, Luca Henkel, Thomas Neuber, Philipp Strack. **Limited Self-knowledge and Survey Response Behavior.**
- Luca Henkel, Philipp Sprengholz, Cornelia Betsch and Robert Böhm **Understanding and mitigating climate policy polarisation.**



- Gwen-Jiro Clochard, with Guillaume Hollard and Omar Sene. **Bringing Contact Interventions to the Lab: Effects of Bilateral Discussions on Interethnic Trust in Senegal.**
- Gwen-Jiro Clochard, Carlos Gomez-Gonzalez, Helmut Dietl and Juan Cruz Duhalde. **Migration and Sources of Discrimination in a Social Context: Experimental Evidence from 15 Latin American Countries (forthcoming in the Journal of Development Economics)**
- Gwen-Jiro Clochard. **Using a Brief Contact to Improve Trust in the Police by the Youth** (forthcoming in the Journal of Behavioral and Experimental Economics)
- Gwen-Jiro Clochard, Majid Ahmadi, Jeffrey Lachman and John List. Toward an Understanding of Discrimination When Multiple Channels Exist.
- Gwen-Jiro Clochard, Carlos Gomez-Gonzalez and Marco Henriques Pereira. Better the Devil You Know: Managers' Networks and Their Influence on Hiring, Responsibilities, and Performance. Working paper.
- Gwen-Jiro Clochard, Shubham Dey, Taisuke Imai and Shusaku Sasaki. Revisiting the Price Elasticity of Charitable Giving: Meta-Analysis of Tax Incentives and Matching Donations. Working paper.

and working papers



- Julia Seither, Maria Sofia Casabianca, and Megan Lang. ***The Hidden Costs of Visible Support***: A Field Experiment on Coaching and Women's Economic Empowerment.
- Julia Seither, Catia Batista, Lara Bohnet and Jules Gazeaud. ***From Destination to Origin***: Experimental Evidence on the International Spillovers of Migrant Integration.
- Julia Seither, Maria Sofia Casabianca and Megan Lang. ***Scaling Skills***
- Julia Seither. ***Keeping Up with the Joneses***: Economic Impacts of Overconfidence in Micro-Entrepreneurs
- Julia Seither and Caita Batista. ***Aspirations as Constraints on Entrepreneurship***.



- Julio Elías, Nicolas Depetris Chauvin and David Priilaid ***Creativity and Innovation in the Food Industry***: Integrating Artistic Typologies and Strategic Breakthroughs. *Current Opinion in Food Science*, (2025).
- Julio Elías, Depetris Chauvin, Nicolas; Ferro, Gustavo; Gatti, Nicolas; and Villanueva, Emiliano C. ***The impact of innovator types on export performance in the Argentine wine industry***. *Journal of Entrepreneurship in Emerging Economies*, Vol. 17 No. 6 pp. 1438–1464 (2025).



- Bea Ahumada. ***Let me Persuade You First: Sequential Bayesian Persuasion***
- Bea Ahumada. ***Excuses and Redistribution***.

In progress



- Daniel Evans, Luca Henkel, John A. List, Brian Jabarian. ***Evaluating and Improving Scientific Knowledge from Experiments.***
 - Description: Conducting experiments requires researchers to make numerous design choices while subject to statistical, practical, and ethical constraints. We develop the Experimental Design Assessment Tool (EDAT) to help researchers with this complexity when generating and evaluating evidence from experiments. EDAT is based on a comprehensive framework that distills experimental designs into distinct components and provides for each guidance on optimal design choices. We operationalize this framework with an evaluation instrument that guides evaluators through experimental designs using targeted questions and generates quantitative quality scores.



- Gwen-Jiro Clochard, Franco Albino and Bea Ahumada. ***Citizen Participation and Trust in the Police: Evaluation of the Foros de Seguridad Pública of the City of Buenos Aires.***
 - The project aims to evaluate the effects of an information campaign about security initiatives in Argentina. We made an evaluation of the FOSEP program in Buenos Aires, with the help of the JILAEE research assistants. We are currently discussing with the government of the Province of Cordoba to corroborate the findings by proposing an evaluation of the program Cordobeses en Alerta.

projects



- Gwen-Jiro Clochard. ***Reducing prejudice: A Meta-Analysis and Experiment on the Contact Hypothesis.***
 - The objective of the paper is to provide a meta-analysis of the contact hypothesis as a tool to reduce prejudice. The JILAE research assistants are critical in helping with the data cleaning and analysis. The paper is currently under revision for Experimental Economics



- Julia Seither, Camila Galindo and John List. ***We are What We Teach: Breaking Gender Gaps with an Innovative Introductory to Economics Course.***
 - This project tests whether a short course based on UChicago's E4E class can change students' interest in Economics, particularly among women.
- Julia Seither, Simon Hug et al. ***Exposure to Violence, Cooperative Behavior, and Emotions.***
 - This project is a multi-country study spanning Colombia, Uganda, Thailand, and Turkey, and will define the role of emotions for the perpetuation of conflict.



- Bea Ahumada, Mallory Avery (Monash University). ***Preferences over the Timing of Fairness Policies.***
 - We explore how the timing of information affects preferences for redistribution. Using an online experiment, we study subjects' preferences to redistribute between two workers. We will vary two dimensions: when workers are informed that there will be redistribution later (either before or after they perform a task) and whether the workers learn what their earnings would have been

In progress projects



- without redistribution. These dimensions mirror differences in real-world redistribution policies. For example, under the U.S. tax system, individuals know before taking a job that taxes will be deducted and also know their pre-tax income. In contrast, salary caps (like in professional sports leagues in the U.S.) prevent people from knowing their potential earnings without the cap, and student loan forgiveness was not anticipated when students initially decided on college enrollment. These policies receive varying levels of public support, and while many factors contribute, the timing of information may be especially important.
- Bea Ahumada. ***Handicaps in Labor Markets***.
 - While initial differences in ability can contribute to income inequality, abilities are not static. They can be improved through experience and practice. However, people might not improve their abilities due to a lack of opportunities or initial disadvantage, increasing the ability gap, reducing mobility, and creating more inequality in the long term. In this paper, I study, theoretically and experimentally, how a handicap tournament (widely used in sports like golf and horse races), in a dynamic setting, affects participation, effort, individual ability, difference in ability among players, and income inequality over both the short and long term. Additionally, I study its impact on economic growth compared to a standard tournament.

Collaboration from JILAEF's RAs



Marco Di Giacomo:

- Luca Henkel. ***Voice AI in Firms: A Natural Field Experiment on Automated Job Interviews***
 - I've helped apply various econometric estimators and other statistical estimations. I've created heat maps and various types of graphs as well as various types of questionnaires. I've also helped edit and comment on the paper writing
- Andres Gago. ***Confrontation Costs in Negotiations: Bargaining Under the Veil of a Screen***
 - We helped conduct lab sessions for the experiment. This included material preparation and data cleaning.
 - Worked with: Juan Martin Favetto, Tomas Villar, Leandro Monzon, Mateo Rubio.



Juan Martín Favetto:

- Luca Henkel. ***Identity as Self-Image.***
 - Classification of papers and search of cited author's contact.
 - Worked with: Marco Di Giacomo
- Luca Henkel. ***Voice AI in Firms: A Natural Field Experiment on Automated Job Interviews***
 - Literature Review.
- Luca Henkel. ***Limited Self-knowledge and Survey Response Behavior***
 - Literature Review.

Collaboration from



- Gwen-Jiro Clochard. ***Reducing prejudice: A Meta-Analysis and Experiment on the Contact Hypothesis.***
 - Review of papers in meta-analysis.
- Julio Elias. ***The impact of innovator types on export performance in the Argentine wine industry***
 - Data Analysis.
- Katya Vasilaky. ***Interviews at Villa 31.***
 - I went to Villa 31 to conduct interviews and transcribe them.
 - Worked with: Marco Di Giacomo, Leandro Monzón.
- Andrés Gago. ***Confrontation Costs in Negotiations: Bargaining Under the Veil of a Screen.***
 - UTDT Lab Experiment on bargaining: I went to UTDT to run the experiment.
 - Worked with: Marco Di Giacomo, Leandro Monzón, Tomás Villar, Mateo Rubio Mazza.



Mateo Rubio Mazza:

- Luca Henkel. ***Voice AI in Firms: A Natural Field Experiment on Automated Job Interviews***
 - Searched minimum wages in Philippines and made corrections to a Latex code
 - Worked with: Marco Di Giacomo.
- Luca Henkel. ***Limited Self-knowledge and Survey Response Behavior***
 - Merged datasets and run regressions (coding task)

JILAEF's RAs



- Gwen-Jiro Clochard. Toward an Understanding of Discrimination When Multiple Channels Exist, with Majid Ahmadi, Jeffrey Lachman and John List
 - Searched NFL drafts days for the past years.
- Andrés Gago. **Confrontation Costs in Negotiations: Bargaining Under the Veil of a Screen.**
 - I've helped to run the sessions, made transcriptions and a coding task.
 - Worked with: Marco Di Giacomo, Juan Martín Favetto, Tomás Villar and Leandro Monzón.
- Luca Henkel. **Eliciting Moral Preferences Under Image Concerns: Theory and Evidence.**
 - I've made literature reviews and calculated effects sizes (coding task)



María del Mar Megy:

- Luca Henkel. **Voice AI in Firms: A Natural Field Experiment on Automated Job Interviews.**
 - Collect data related to the Business Process Outsourcing (BPO) Industry in the Philippines.
- Gwen-Jiro Clochard. **Migration and Sources of Discrimination in a Social Context: Experimental Evidence from 15 Latin American Countries.**
 - Collect demographic data from Latin American Countries.
 - Worked with: Tomás Villar.

Collaboration from



- Gwen-Jiro Clochard. ***Using a Brief Contact to Improve Trust in the Police by the Youth.***
 - Literature Review: Trust in the Police by the Youth.
- Luca Henkel. ***Early-Career Behavioral Economics Conference (ECBE).***
 - Collect data from papers presented at ECBE conferences.
- Germán Reyes. ***Political Speeches Project.***
 - Digitizing speeches from congressional sessions in Latin American countries.
- Germán Reyes. ***Compilation of academic papers.***
 - Write code to download papers from different repositories.



Leandro Monzón:

- Gwen-Jiro Clochard. ***Revisiting the Price Elasticity of Charitable Giving: Meta-Analysis of Tax Incentives and Matching Donations.***
 - Literature review, coding and data analysis
- Danila Medvedev. ***Political parties experiment***
 - Research, coding and data analysis
- Andrés Gago. ***Confrontation Costs in Negotiations: Bargaining Under the Veil of a Screen.***
 - Lab assistant during experiments, sentiment analysis and coding
 - Tomas Villar
- Gwen Jiro Clochard. ***Saudi sports project***
 - Literature review
 - Worked with: Franco Albino

JILAE's RAs



- Katya Vasilaky. **Interviews at Villa 31.**
 - Transcriptions
 - Worked with: Juan Martin Favetto
- Diogo Geraldes. **Gender Differences in Performance Under Competition: Is There a Stereotype Threat Shadow?**
 - Data analysis and research.



Tomás Ezequiel Villar Toledo:

- Luca Henkel. **Voice AI in Firms: A Natural Field Experiment on Automated Job Interviews**
 - I designed different cost-functions for AI interviews and computed brake even points compared to human interview's cost.
- Luca Henkel. **Limited Self-knowledge and Survey Response Behavior**
 - I merged longitudinal panel surveys to study the relationship between self-knowledge accuracy and mental health outcomes over time. Created figures showing the evolution of both variables across subgroups defined by age and self-knowledge level.
- Gwen-Jiro Clochard. **Migration and Sources of Discrimination in a Social Context: Experimental Evidence from 15 Latin American Countries**
 - I collected variables for several countries in order to produce heterogeneity tests. I worked with María del Mar Megy.
- Gwen-Jiro Clochard. **Citizen Participation and Trust in the Police: Evaluation of the Foros de Seguridad Pública of the City of Buenos Aires**
 - I built a timeline for the different rounds on the experiment.

Collaboration from JILAEF's RAs



- Luca Henkel:
 - I helped writing the design of and experiment by Luca Henkel related to charitable giving.
- Gwen-Jiro Clochard and Franco Albino.
 - Searched for a risk-assesment function for lung cancer in middel eastern countries for project by Gwen-Jiro Clochard and Franco Albino.
- Luca Henkel
 - I made a literature review for a project on debates under Luca Henkel.
- Andrés Gago. ***Confrontation Costs in Negotiations: Bargaining Under the Veil of a Screen.***
 - I acted as experimenter with the collaboration of all the RA team, also transcribed negotiations both online and face to face.

In-progress projects outside JILAE



- Gwen-Jiro Clochard, Franco Albino, Faisal Kattan and John List. **Improving Smoking Cessation in Saudi Arabia.** Testing several behavioral interventions to increase the success rate of smoking cessation attempts.
- Gwen-Jiro Clochard, Mifuyu Kira and Yuki Takahashi. **Legacy of Discrimination Based on Wrong Beliefs: Evidence from the Minamata Disease.** Understanding the effects of discrimination on preferences using the case of the Minamata Disease in Southern Japan.
- Gwen-Jiro Clochard, Andreas Andersen, Guillaume Hollard and Andreas Kotsadam. **Contact and the Price of Prejudice.** Effects of a brief contact on the price people are willing to pay to discriminate. The experiment is to be conducted in Japan.
- Gwen-Jiro Clochard, Thomas Colagiuri, Kevin Lee and John List. **Efficient and Valid Within-Subject Designs.** Theoretically and empirically test the validity of within-subject design experiments in economics.



- Julia Seither, Catia Batista and Alexander Coutts. **Reputation Effects in Education Outcomes.** This project aims at understanding how private versus public relative performance feedback affects students in a university classroom.
- Julia Seither, Megan Lang. **Constraints to Women's Microenterprise Growth.** This study combines evidence from an artificial field experiment and a natural field experiment to understand how social and cultural dynamics impact investment decisions of micro-entrepreneurs in Uganda.

In-progress projects



- Julio Elías, Frederike Ambagtsheer, Eline Bunnik, Liset H.M. Pengel, Marlies Reinders, Nicola Lacetera and Mario Macis. **Public opinions on removing disincentives and introducing incentives for organ donation in Germany, the Netherlands and Spain.**



- Bea Ahumada, Mallory Avery (Monash University) and Neeraja Gupta (University of Richmond): **Silly.** Interview Questions and Gender Bias in Hiring. We study how gender gaps in hiring in a male-type environment are influenced by the use of "irrelevant" or "silly" interview questions. These questions, commonly used as ice-breakers, aim to reveal an applicant's personality rather than assess job-related skills. In an online experiment, we collect hiring decisions from "employers" who choose between pairs of "employees" who previously completed a task twice and answered a survey. Employers indicate how much they would pay to see employee's response to the "silly" question; and then, they choose which worker to hire. We manipulate whether employees' gender is revealed.
- Bea Ahumada, Margaret McConnell (Harvard University) and Stephanie Wang (University of Pittsburgh). **Moral Sentiments and Contribution to Public Goods.** We investigate how moral framing and suggested contributions influence individuals' willingness to contribute in a public goods game. Conducted in a laboratory setting, the experiment includes four treatments: (1) participants saw a message suggesting contribution of 70% of their individual valuation, (2) participants saw the message "Do Your Part," (3) participants saw

outside JILAE



- both the suggested contribution and the moral message, and (4) a control group. Results show that both the moral message and suggested contributions increased contributions to the public good, with the highest contributions observed when both were combined. These findings support a model in which individuals are motivated to avoid a negative self-image by aligning with moral or normative suggestions. Our study suggests that prescriptive norms, particularly when combined with moral framing, can effectively increase contributions in public good settings."

Seminars and conferences given by JILAEER researchers



- **Invited Seminars:** Erasmus School of Economics | University of Amsterdam | University of Chicago | University of Cologne | University of Konstanz | RWI Research Seminar.
- **Conference presentations:** AI at Work Retreat | CESifo Area Conference on Behavioral Economics | CESifo Workshop on the Economic and Societal Impacts of AI | Early-Career Behavioral Economics Conference (no presentation) | 17th Maastricht Behavioral and Experimental Economics Symposium | SFI-SCG Corporate Social Responsibility Workshop (Chair) | 2025 World Congress of the Econometric Society | Zeuthen Workshop on Cognitive Foundations of Economic Decision-making



Frontiers in Behavioral and Experimental Economics, Osaka; ESA AP 2025 Conference, Osaka; University of Kyoto; ESA World Conference, Beijing; ASFEE, Nancy; European Economic Association Meeting, Bordeaux; Science of Philanthropy Initiative, Chicago; Advances in Field Experiments, Chicago; Journées Francophones de la Recherche, Tokyo

ence presentations archers during 2024



Advances with Field Experiments (AFE), LACEA-BRAIN/Ridge Forum, Conference on Network Science and Economics, LACEA-HUMAN



AAEP Annual Meeting, Rio Cuarto, Argentina.
Markets & Society Conference, Merkatus Center, George Mason University.
Pigou Society, Harrow School.
Friday Lectures, CLAS, Stanford University.



Universidad del Rosario (JobTalk); Masaryk University (JobTalk); BME GTK Quantitative. Social and Management Sciences Research Centre (JobTalk)
Chicago School in Experimental Economics
Lima Experimental and Behavioral Economics Conference
JILAEE Seminar. AEEP.

OTHER PROFES SIONAL ACTIVI TIES

GRANTS:

Luca Henkel:

- Schmidt Sciences AI at Work Research Grant (\$200,000)

Gwen-Jiro Clochard:

- 2025-2026 Kakenhi Young Researcher Grant, 2,600,000 ¥ (~US\$ 16,500).
- 2025 Joint Usage Grant, ISER, 320,000 ¥ (~US\$ 2,000)

Julio Elías:

- Honorary Diploma from Congress of Argentina for work on promoting organ donations in Argentina
- Tinker Visiting Professor, Stanford University

Bea Ahumada:

Shovel Ready to Implement Projects Research Grants Scheme (16,700 AUD), Department of Economics, Monash University, 2025

JULIA SEITHER

- Organization of LACEA-BRAIN/Ridge May Forum Workshop

GWEN-JIRO CLOCHARD

- Organization of the 2025 Asia-Pacific Meeting of the Economic Science Association (~300 participants)

- "Testing Discrimination Against Immigrants in Latin American Amateur Football" Based on "Migration and Sources of Discrimination in a Social Context: Experimental Evidence from 15 Latin American Countries," published in the Journal of Development Economics, JILAE Research Brief - October 2025
- Discrimination in football: Do players face barriers in Latin America?, VoxDev article, available at <https://voxdev.org/topic/institutions-political-economy/discrimination-football-do-players-face-barriers-latin-america>

Affiliated researchers

That started
projects using
resources
from JILAEE



Andrés Gago (*Universidad Torcuato Di Tella*)

- The JILAEE RA team assisted me with the experiments I conducted for the resubmission of my paper, “Confrontation Costs in Negotiations: Bargaining Under the Veil of a Screen,” which is currently an R&R at the Journal of the European Economic Association.
- I also connected with Diogo Geraldes, who visited JILAEE in 2025, and we have started a project titled “Gender Differences in Bargaining Around the Globe,” together with another member of JILAEE, Gwen-Jiro Clochard; a former JILAEE RA, Franco Albino; and Max Grossman, Assistant Professor at the University of Melbourne. The project is currently under review by the IRB committee of the University of Melbourne, and we plan to begin data collection upon approval.



Andy Brownback (*University of Arkansas*)

- We have explored a project looking at comparing the roles of signaling and human capital accumulation in higher education in Argentina. We utilized some RA work with Juan Martin Favetto, who was helpful in finding data from the Argentine department of education. We think there is some promise, but we likely need to find more detailed information before continuing.

Affiliated researchers

That started
projects using
resources
from JILAEE



Katya Vasilaky (Cal Poly, SLO)

- I piloted a survey on domestic violence that was administered in Barrio 31 and online with UCEMA students. There was no official partner, but I had a contact via Julio Elias in Barrio 31.



Germán Reyes (Middlebury College and IZA)

- The project currently has no title since it's still in exploratory stages, but with research assistance provided through JILAEE, I worked with María del Mar Megy to consolidate, document, and build download pipelines for large-scale academic paper repositories. The project involved creating scripts and metadata documentation for downloading papers from NBER, arXiv, and SSRN, which will serve as inputs for ongoing research on AI's impact on economics and scientific production. María helped develop Python code for automated downloading, investigated access methods for multiple repositories (including CEPR and Top 5 journal articles via JSTOR), and delivered organized code packages with READMEs. This research assistance was valuable for building the data infrastructure needed for text analysis of academic papers at scale.

Affiliated researchers

That started
projects using
resources
from JILAEE



Diogo Geraldès (*University College Dublin*)

- JILAEE RAs helped by doing a data analysis and research



Danila Medvedev (*Northwestern University Kellogg School of Management*)

- JILAEE RAs helped by doing some research, coding and data analysis.

JiLAEE Online & on site seminars.

The JiLAEE Seminar Series hosts speakers from Argentina as well as researchers based at universities abroad. This year we kept having online seminars and we combined them with on site seminars. Usually after an onsite seminar we organize a lunch where the researchers keep the discussion about the subject paper or other matters of interest.

March

ADiogo Geraldes (University College Dublin)

"Women compete more against women"

August

Ricardo Pérez-Truglia (UCLA)

"Pushing the Envelope: The Effects of Salary Negotiations"

September

Danila Medvedev (Northwestern University Kellogg School of Management)

"Global Rich and Poor"

November

Bea Ahumada (JiLAEE)

"Excuses and Redistribution"

December

Kathryn Vasilaky (California Polytechnic State University}

Does Background Uncertainty Narrow the Gender Competition Gap? An experiment with non-students

Find Us Online!



www.jilae.org

[X](#)

[YouTube](#)

[Linkedin](#)