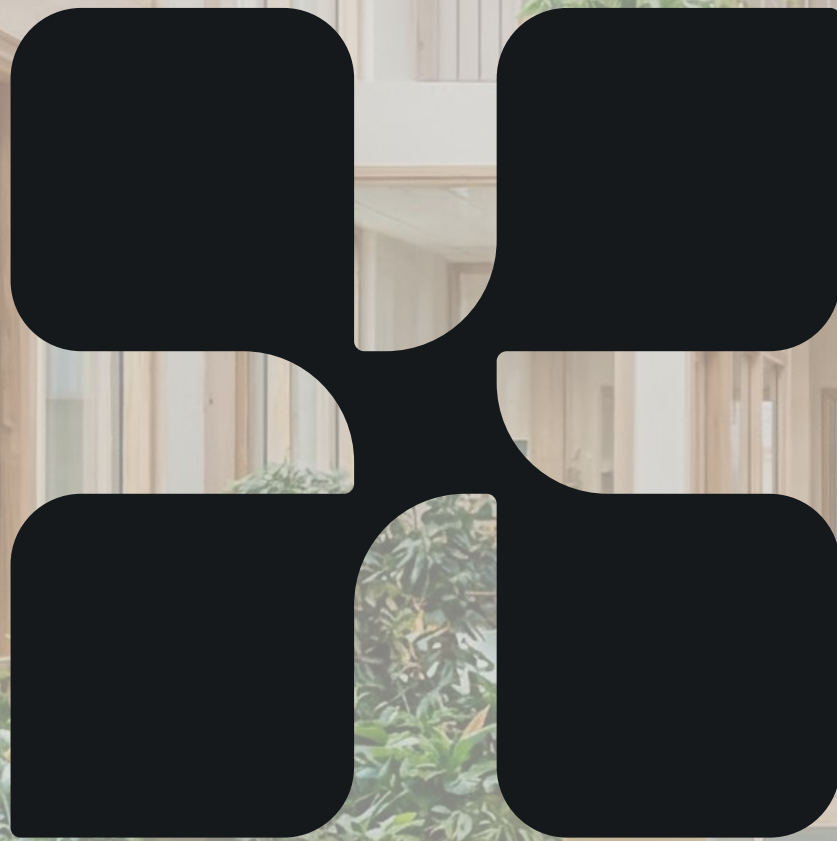


Learning Catalogue



apto plus



Index

- Lattice Table - Collaborative learning
- Extend Ceiling Mounted - Øregård Gymnasium
- Extend Wall Mounted - Silkeborg Library
- Inviting book display - Rødning skole
- Felt as a creative and playful material
- Extend Hub – a central point for children and activities



A table designed for dialogue, exchange of ideas and presence

Lattice Table is designed to accommodate 4–6 people. Above the tabletop, a steel grid allows for plants or accessories to be integrated, adding character to the space.

The table's side panels are crafted in felt with vertical cut-outs, creating a semi-transparent effect. Depending on the viewing angle, the table appears either more enclosed or more open.



Lattice Table, Counter, 6P

H: 2000 mm W: 1850 mm D: 800 mm

● 6400-0003-0029 (Green)*

● 6400-0003-0026 (Dark Grey)*



Lattice Table, Counter, Wall Mounted, 6P

H: 2000 mm W: 1825 mm D: 800 mm

● 6400-0004-0029 (Green)*

● 6400-0004-0026 (Dark Grey)*





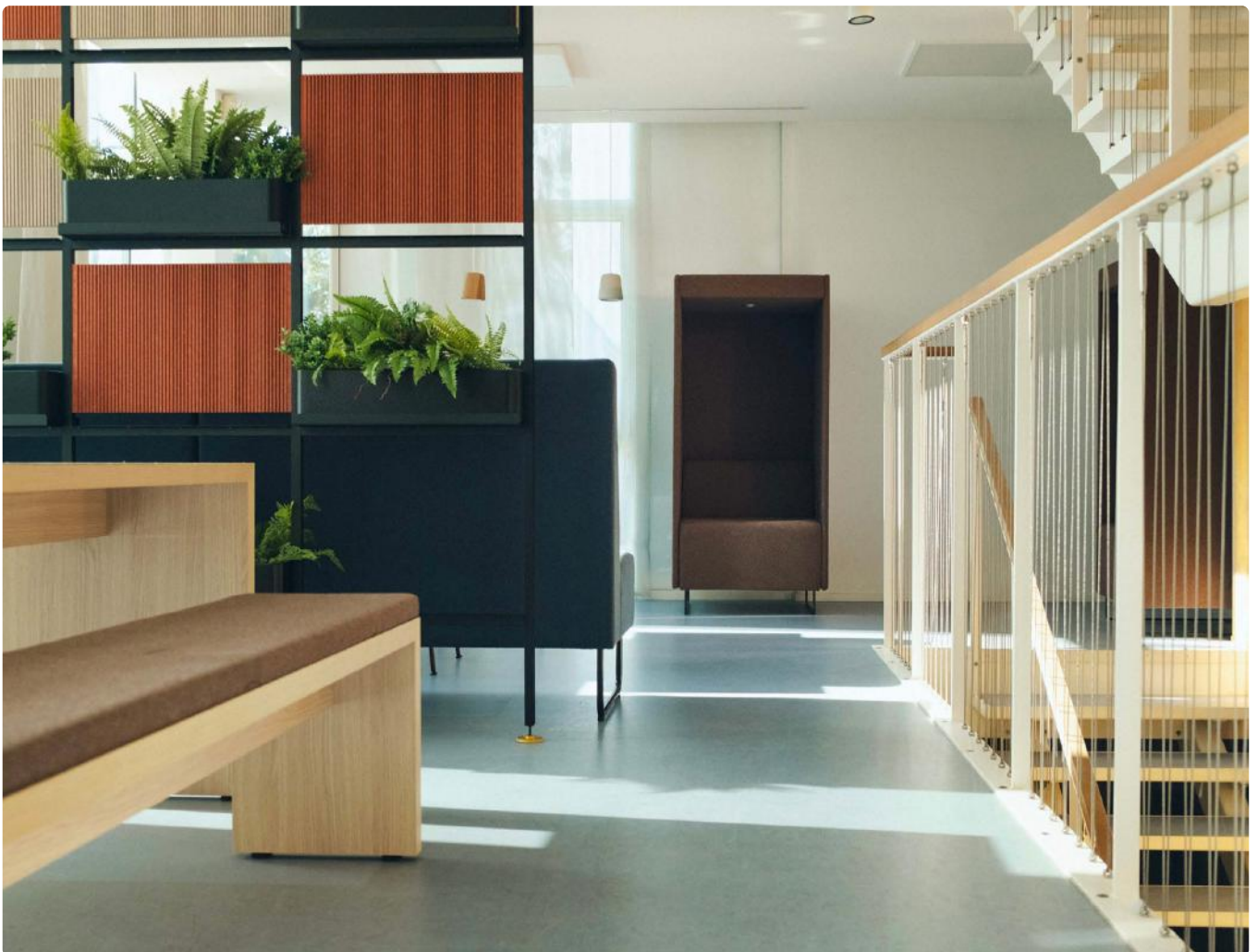


Project with Ulma K and Øregård Gymnasium

In harmony with the architecture

The school management commissioned **Ultima K** to develop proposals for redesigning the original library, provide ideas and concepts for upgrading the study environment in the basement of the main building, as well as supply furniture for two new learning spaces and propose improvements to staff work and meeting facilities.

Extend takes on both an aesthetic and functional role within the new environments.





GRØNNE
FRISTELSER

VILDPLUKKET

VILDPLUKKET
Hvordan udnyt du alle planter i din have og på din balkon? Det gamle bånd om at høste og tørre råvarer, og hvordan du kan bruge råvarerne i mad og drikkevarer.

Project with Daarback Design and Silkeborg Library



VINTAGE-
HEKLENG

DESIGNBOGEN

30 TASKER

30 TASKER

30 TASKER

30 TASKER

Lærke
Bagger
strih

40 hækede
trøjehænder

40 hækede
trøjehænder

Scrapbook

Scrapbook

Scrapbook

BISPEBORGEN
SPØTTRUP

GIET
HØVVED
HVAD
HERVEJEN
GAV MIG

Niels Peter Stilling
Herregårde

SKAGEN

Danmarks Kyster
af Jørgen Kjær

Søskindsø
Bornholm

SØNDERJYLLAND

OPLEV DIT
DANMARK

Fyn og øerne -
Lolland og Falster

DE
DAN

An inviting book display

Competing for attention with the iPhone can be a challenge, but with relatively simple interventions as demonstrated in the project developed in collaboration with **Daarbak Design** and **Silkeborg Library**, an inviting and eye-catching wall has been created, almost like a curated display of books.

Positioned adjacent to one of the library's reading areas, the installation naturally invites exploration.







Extend 3D Book Trolley, Tall
H: 1280 mm W: 650 mm D: 350 mm
● 6200-1035-9011



Extend 3D Book Trolley
H: 960 mm W: 650 mm W: 350 mm
● 6200-1019-9011





Adapt Board Wall Mounted
H: 1004 mm W: 554 mm D: 26 mm
● 6000-0901-9000



Project with Daarback Design and Rødning Skole



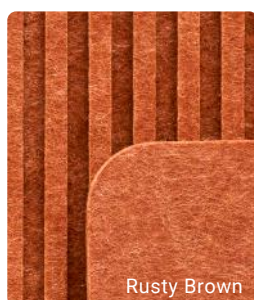
Project with Daarbak Design & Jyske Bank

Crafting spaces with felt

Our felt is made from a minimum of 70% recycled plastic, offering a more sustainable alternative to conventional interior solutions. To reduce CO₂ emissions, all felt products are designed for flat packing and efficient transport.

Felt is both flexible and durable, with a soft, textile-like surface that adds warmth, improves acoustics, and creates a calm atmosphere. We offer a curated range of standard colours, all of which can be explored in our showroom.

As a new option, we can now cut the felt ourselves, giving us creative freedom—especially useful in school environments. For specific colour choices or project needs, we always recommend speaking with our sales team.







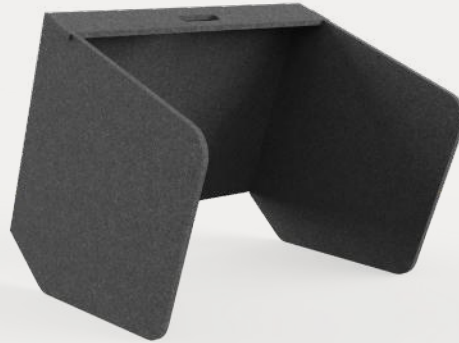


Tool Box

H: 175 mm W: 200 mm D: 490 mm
Other colours available upon request
● 3500-0010-0026 (Dark Grey)*



Portable Table Divider, Dark Grey
H: 550 mm W: 700 mm D: 24 mm
● 3500-0005-0026



Flex Study

H: 554 mm W: 668 mm D: 640 mm
● 3500-0006-0026 (Dark Grey)*
● 3500-0006-0029 (Green)*



Storage Box, w. Oak Handle

H: 300 mm W: 330 mm D: 290 mm
● 3500-0008-0006 (Beige & Dark Grey)
● 3500-0008-0026 (Dark Grey)



Storage Box

H: 300 mm W: 330 mm D: 290 mm
● 3500-0007-0006 (Beige)
● 3500-0007-0026 (Dark Grey)



Wall Mount, Flex Study (Capacity: 6 pcs.)

H: 150 mm W: 100 mm D: 274 mm
● 3500-0009-9005





Extend Hub, Alcove
H: 1800 mm W: 600 mm D: 1275 mm
6200-0944



Extend Hub, Storage
H: 1800 mm W: 600 mm D: 750 mm
6200-0946



Extend Hub, Desk
H: 1800 mm W: 600 mm D: 1050 mm
6200-0945



Extend Hub, Display
H: 1800 mm W: 600 mm D: 750 mm
6200-0947

Extend Hub – a central point for children and activities

This piece, Extend Hub, is a room divider where each module can be rotated, allowing access from both sides.

The unit consists of four modules: two for storage and two designed for sitting in or by.



Should apto plus be involved in the design process?

We are happy to participate in the design process and collaborate with architects and end-users. When it comes to combining form and function, we actively contribute our expertise in dialogue with all relevant stakeholders. We understand that many projects require tailor-made solutions, carefully adapted to each space, atmosphere, and color scheme.

Our showrooms in Silkeborg and Holte are always open for visits, and we welcome you to explore materials, solutions, and possibilities together with us.



